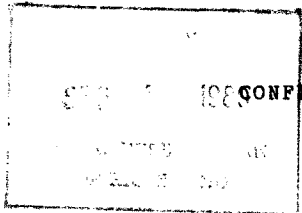


Confidential
1.31.9 Nov.
 CONFIDENTIAL (FR) 1.5.2



DAILY AVERAGE BORROWINGS FROM FEDERAL RESERVE BANKS
 (DOLLAR AMOUNTS IN MILLIONS)
 WEEKLY COMPUTATION PERIOD ENDING 8/13/80

SEPTEMBER 3, 1980

	TOTAL	BOSTON	NEW YORK	PHILA-DELPHIA	CLEVELAND	RICHMOND	ATLANTA	CHICAGO	ST. LOUIS	MINNEAPOLIS	KANSAS CITY	DALLAS	SAN FRANCISCO
TOTAL BORROWINGS	393.7	3.0	63.1	272.9	.7	.9	.9	4.0	.5	4.5	11.9	.2	30.9
AS % OF REQ RES ALL BANKS	1.0	.3	.8	19.2	.0	.0	.0	.1	.0	.4	.6	.0	.4
NUMBER OF BORROWING BANKS	43	5	6	2	1	2	2	4	2	3	11	1	4
SEASONAL BORROWINGS	6.0	.0	.0	.0	.0	.0	.0	.5	.3	3.1	1.8	.2	.1
AS % OF TOTAL BORROWINGS	1.5	1.0	.0	.0	.0	.0	.0	12.8	51.1	68.4	14.9	100.0	.5
NUMBER OF BORROWING BANKS	11	1						1	1	2	4	1	1
ALL OTHER BORROWINGS	387.7	3.0	63.1	272.9	.7	.9	.9	3.5	.2	1.4	10.2	.0	30.7
AMOUNT ACCOUNTED FOR BY BANKS BORROWING IN ---- OF LAST 13 WEEKS													
ALL 13	272.9	.0	.0	272.9	.0	.0	.0	.0	.0	.0	.0	.0	.0
10 - 12	.6	.0	.0	.1	.0	.0	.0	.0	.0	.0	.0	.0	.5
7 - 9	6.9	2.9	.0	.0	.7	.0	.0	3.3	.0	.0	.0	.0	.0
1 - 6	107.3	.1	63.1	.0	.0	.9	.9	.2	.2	1.4	10.1	.0	30.2
NUMBER OF BANKS BORROWING UNDER ADJUSTMENT CREDIT IN ---- OF PAST 13 WEEKS BY TOTAL DEPOSIT SIZE OVER \$1 BILLION													
ALL 13	1			1									
10 - 12													
7 - 9	1	1											
1 - 6	39	4	7	2	2	5	3	5	1	2	1	1	6
\$250 MILLION - \$1 BILLION													
ALL 13													
10 - 12													
7 - 9													
1 - 6	33		4	2	1	5	6	2	4		5	2	2
UNDER \$250 MILLION													
ALL 13													
10 - 12	3			1						1			1
7 - 9	8			1	1	2		3			1		
1 - 6	180	23	18	7	6	18	9	30	6	12	38	4	9
NUMBER OF MEMBER BANKS	5,423	170	228	219	381	377	576	902	389	507	802	729	143
IN PAST 13 WEEKS NUMBER OF													
SEASONAL BORROWERS	86	17	1	3	1	2	1	2	5	11	32	10	1
ALL BORROWING BANKS	351	45	30	17	11	32	19	42	16	26	77	17	19

PERCENTAGES CALCULATED FROM UNROUNDED DATA