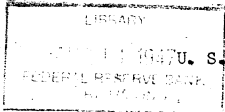


FRASER DEPARTMENT
July 17 1947



U. S. GOVERNMENT SECURITY YIELD AND PRICES AND HIGH-GRADE CORPORATE BOND YIELDS
(Yields in per cent per annum)

	U. S. Government security yields					Price of long-term Treasury bonds	Yield on high-grade corporate bonds
	Bills 3 months	Certificates 9 to 12 months	Bonds				
			Notes 3 to 5 years Tax-able	7 to 9 years Tax-able	15 years and over Tax-able		
1947 - June 2		1/.85	1.19	1.45	2.19	104.50	2.46
3		.85	1.19	1.45	2.20	104.47	2.46
4		.85	1.19	1.45	2.20	104.45	2.46
5		.85	1.19	1.46	2.20	104.34	2.47
6		.85	1.20	1.46	2.21	104.29	2.47
7	Closed						
9		.85	1.21	1.47	2.21	104.23	2.48
10		.85	1.21	1.46	2.21	104.22	2.47
11		.85	1.21	1.47	2.21	104.22	2.47
12		.85	1.21	1.47	2.21	104.18	2.47
13		.85	1.21	1.47	2.22	104.14	2.47
14	Closed						
16		.85	1.22	1.47	2/2.23	2/103.99	2.47
17		.85	1.22	1.48	2.23	103.99	2.47
18		.85	1.22	1.48	2.24	103.96	2.47
19		.85	1.22	1.48	2.24	103.93	2.47
20		.85	1.21	1.48	2.24	103.86	2.47
21	Closed						
23		.85	1.22	1.49	2.25	103.80	2.47
24		.85	1.22	1.49	2.25	103.80	2.47
25		.85	1.22	1.49	2.24	103.83	2.47
26		.85	1.21	1.49	2.24	103.82	2.47
27		.85	1.21	1.48	2.24	103.82	2.47
28	Closed						
30		.85	1.21	1.48	2.25	103.79	2.48
Weekly average:							
June 7	.376	.85	1.19	1.45	2.20	104.41	2.46
14	.376	.85	1.21	1.47	2.21	104.20	2.47
21	.376	.85	1.22	1.48	2.24	2/103.95	2.47
28	.376	.85	1.22	1.49	2.24	103.81	2.47
Monthly average	.376	.85	1.21	1.47	2.22	104.08	2.47

1/ Issues included changed on June 1.
2/ Issues included decreased from 9 to 8 on June 16.