



# WEEKLY BUSINESS STATISTICS

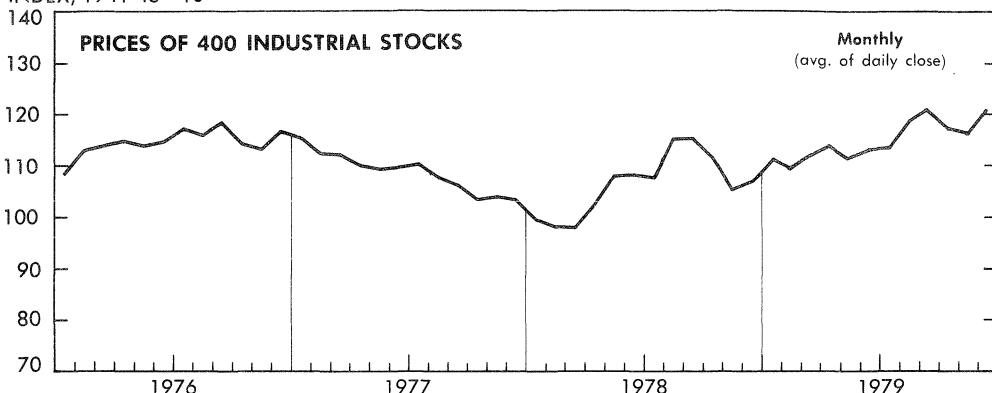


January 25, 1980

Annual Subscription: domestic, \$22.00; foreign, \$27.50 (no single copies sold). Order from Superintendent of Documents, U.S. Government Printing Office, Washington, D.C. 20402.

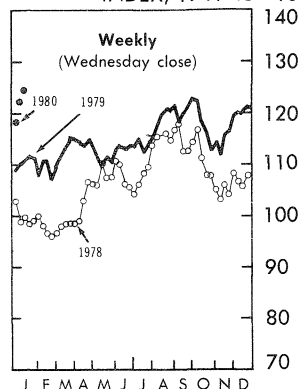
## U.S. DEPARTMENT OF COMMERCE/BUREAU OF ECONOMIC ANALYSIS

INDEX, 1941-43=10

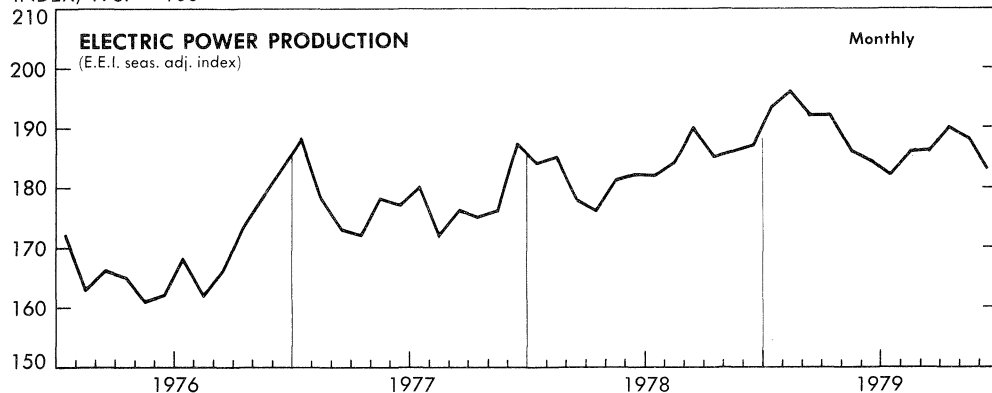


Data: Stand & Poor's Corp.

INDEX, 1941-43=10

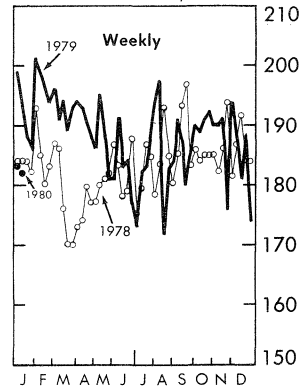


INDEX, 1967=100

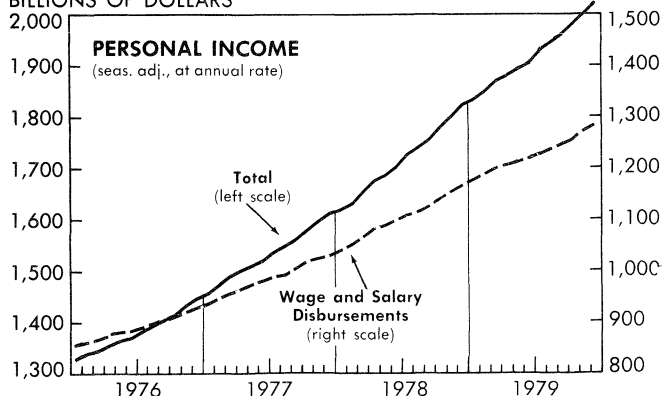


Data: Edison Electric Inst.

INDEX, 1967=100

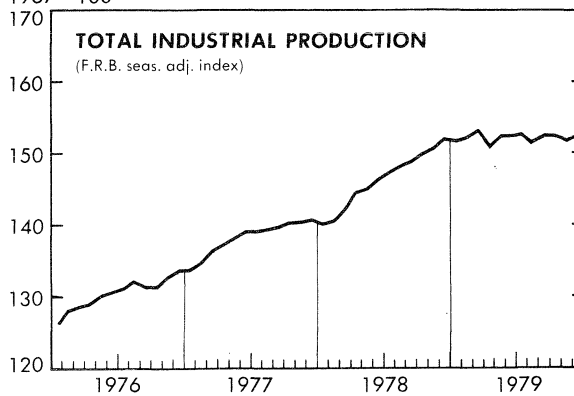


BILLIONS OF DOLLARS



Data: U.S. Dept. of Commerce

1967=100



Data: Federal Reserve Board

WEEKLY BUSINESS STATISTICS updates selected data that are published monthly in the SURVEY OF CURRENT BUSINESS.

WEEKLY BUSINESS STATISTICS<sup>1</sup>

ITEM	1979			1980		
	Jan. 13	Jan. 20	Dec. 29	Jan. 5	Jan. 12	Jan. 19
SPOT MARKET PRICES, 22 COMMODITIES <sup>2/</sup> .....1967=100..	253.5	254.9	286.9	287.5	285.4	284.9
9 Foodstuffs.....do....	249.1	251.2	256.7	256.0	251.2	246.7
13 Raw industrials.....do....	256.4	257.3	309.8	311.7	311.7	314.6
INITIAL UNEMPLOYMENT CLAIMS, State programs.....thous..	676	494	589	574	799	.....
INSURED UNEMPLOYMENT, all programs.....do....	3,156	3,226	3,328	3,834	.....	.....
State programs (50 States, D.C., and Puerto Rico).....do....	2,997	3,061	3,136	3,634	.....	.....
FAILURES, INDUST. AND COMMERCIAL (Dun & Bradstreet)...number..	125	184	72	63	189	212
FINANCE:						
Currency in circulation <sup>3/</sup> .....mil. \$..	113,761	112,599	124,728	125,463	124,844	e123,375
Federal Reserve bank credit outstanding, total <sup>3/</sup> .....do....	128,914	129,659	141,347	143,400	141,018	139,663
Member bank reserve balances <sup>3/</sup> .....do....	41,722	44,860	44,056	44,767	44,807	46,573
Excess reserves, estimated <sup>3/</sup> .....do....	-122	404	496	550	239	585
Assets and liabilities of large commercial banks: <sup>4/</sup>						
Demand deposits, adjusted.....do....	105,431	108,451	116,998	122,796	112,982	.....
Savings deposits.....do....	77,497	77,446	72,252	74,613	74,463	.....
Loans and investments, gross adjusted, total.....do....	443,478	441,802	503,967	510,099	505,867	.....
U.S. Government obligations.....do....	35,104	35,778	35,592	36,090	35,872	.....
Commercial and industrial loans (gross).....do....	131,928	132,060	155,814	158,296	156,686	.....
Real estate loans (gross).....do....	81,484	81,191	98,280	99,799	99,894	.....
Bond yields, domestic corporate (Moody's) <sup>3/</sup> .....percent..	9.65	9.67	11.49	11.54	11.60	11.67
Stock prices, 500 stocks (Stand. & Poor's) <sup>4/</sup> ...1941-43=100..	98.77	99.48	107.78	105.76	109.05	111.05
Industrial, 400 stocks.....do....	110.02	110.87	120.83	118.41	122.30	124.89
PRODUCTION:						
Bituminous coal.....thous. sh. tons..	12,822	11,880	10,655	12,835	15,120	.....
Electric power, by utilities.....mil. kw.-hr..	48,582	47,294	39,326	42,577	46,196	.....
Motor vehicles (passenger cars).....number..	185,603	154,455	0	88,419	107,898	90,216
Petroleum (crude) and condensate <sup>3/</sup> .....thous. bbl..	8,457	8,457	e8,581	e8,627	e8,627	.....
Steel, raw.....thous. sh. tons..	2,491	2,418	2,152	2,276	2,379	2,362
Rate of capability utilization <sup>5/</sup> .....percent..	82.9	80.5	74.4	77.9	81.4	80.8
RAIL FREIGHT, REVENUE TON-MILES.....bil..	15.8	15.0	12.0	14.4	16.9	.....

<sup>1/</sup> Data do not always cover calendar weeks. <sup>2/</sup> Tuesday price. <sup>3/</sup> Daily average. <sup>4/</sup> Wednesday data. <sup>5/</sup> Capability for a full order book based on current availability of raw materials, fuels, supplies, and industry facilities. <sup>c/</sup> Estimated.

## MONTHLY BUSINESS STATISTICS

ITEM	1978		1979			
	III	IV	I	II	III	IV <sup>p/</sup>
GENERAL BUSINESS INDICATORS						
NATIONAL INCOME AND PRODUCT						
SEASONALLY ADJUSTED QUARTERLY TOTALS AT ANNUAL RATES:						
GROSS NATIONAL PRODUCT, CURRENT DOLLARS, TOTAL.....bil. \$..	2,159.6	2,235.2	2,292.1	2,329.8	c2,396.5	2,455.8
Personal consumption expenditures, total.....do....	1,369.3	1,415.4	c1,454.2	1,475.9	1,528.6	1,580.4
Durable goods, total.....do....	203.5	212.1	213.8	208.7	213.4	215.5
Motor vehicles and parts.....do....	92.4	94.9	97.7	89.1	89.8	88.6
Furniture and household equipment.....do....	78.9	82.7	82.1	84.2	87.3	89.4
Nondurable goods, total.....do....	536.7	558.1	571.1	581.2	604.7	631.0
Clothing and shoes.....do....	92.7	96.8	95.5	96.9	101.0	105.0
Food.....do....	274.5	283.9	292.9	296.7	303.1	315.1
Gasoline and oil.....do....	51.5	55.0	58.4	60.2	68.3	73.4
Services, total.....do....	629.1	645.1	c689.3	686.0	710.6	733.9
Household operation.....do....	92.5	93.7	99.1	99.7	103.5	105.6
Housing.....do....	215.0	222.1	229.5	236.3	244.9	255.7
Transportation.....do....	49.7	50.8	52.9	54.5	56.8	58.9
Gross private domestic investment, total.....do....	356.2	370.5	373.8	395.4	392.3	383.3
Fixed investment.....do....	336.1	349.8	354.6	361.9	377.8	376.9
Nonresidential.....do....	225.9	236.1	243.4	249.1	261.8	261.3
Residential.....do....	110.2	113.7	111.2	112.9	116.0	115.6
Change in business inventories.....do....	20.0	20.6	19.1	33.4	14.5	6.4
Net exports of goods and services.....do....	-6.8	-4.5	4.0	-8.1	-2.3	-7.7
Exports.....do....	213.8	224.9	238.5	243.7	267.3	280.0
Imports.....do....	220.6	229.4	234.4	251.9	c269.5	287.7
Gov't purchase of goods and services, total.....do....	440.9	453.8	460.1	466.6	477.8	499.8
Federal.....do....	152.3	159.0	163.6	161.7	162.9	177.0
National defense.....do....	99.0	101.2	103.4	106.0	109.0	114.6
State and local.....do....	288.6	294.8	296.5	304.9	314.9	322.8

<sup>p/</sup> Preliminary. <sup>c/</sup> Corrected.

ITEM	1978		1979			
	III	IV	I	II	III	IV p/
GENERAL BUSINESS INDICATORS--Con.						
NATIONAL INCOME AND PRODUCT--Con.						
SEASONALLY ADJUSTED QUARTERLY TOTALS AT ANNUAL RATES--Con.						
GROSS NATIONAL PRODUCT, 1972 DOLLARS, TOTAL.....bil. \$..	1,407.3	1,426.6	1,430.6	1,422.3	1,433.3	1,438.4
Personal consumption expenditures, total.....do....	905.3	920.3	921.8	915.0	925.9	935.2
Durable goods, total.....do.....	147.5	152.1	150.2	144.8	146.9	146.0
Nondurable goods, total.....do.....	344.7	351.9	348.1	344.1	349.2	356.0
Services, total.....do.....	413.1	416.3	423.5	426.1	429.9	433.2
Gross private domestic investment, total.....do....	214.0	217.4	217.2	221.7	214.2	206.2
Fixed investment.....do.....	201.8	205.5	204.9	203.5	207.1	203.0
Nonresidential.....do.....	141.6	145.5	147.2	146.9	150.7	148.0
Residential.....do.....	60.2	60.0	57.7	56.7	56.5	55.0
Change in business inventories.....do.....	12.2	12.0	12.3	18.1	7.1	3.2
Net exports of goods and services.....do....	13.3	12.9	17.0	13.2	20.1	20.7
Exports.....do.....	111.9	113.8	117.0	116.0	122.2	123.9
Imports.....do.....	98.5	101.0	100.0	102.9	102.1	103.2
Gov't purchases of goods and services, total.....do...	274.7	276.0	274.7	272.4	273.1	276.3
Federal.....do.....	98.5	99.3	101.1	98.1	97.4	100.4
State and local.....do.....	176.2	176.6	173.6	174.3	175.6	175.9
NATIONAL INCOME, TOTAL.....do.....	1,752.5	1,820.0	1,869.0	1,897.9	1,941.9	.....
Compensation of employees, total.....do.....	1,321.1	1,364.8	1,411.2	1,439.7	1,472.8	1,512.8
Proprietors' income, total 1/.....do.....	117.4	125.7	129.0	129.3	c130.3	131.5
Farm.....do.....	26.1	31.3	34.2	33.7	30.9	29.5
Nonfarm.....do.....	91.3	94.4	94.8	95.5	99.4	102.0
Rental income of persons with capital consumption adjustment.....do.....	26.8	27.1	27.3	26.8	26.6	27.0
Corp. profits, total 1/.....do.....	175.2	184.8	178.9	176.6	180.8	.....
Profits before tax, total.....do.....	212.0	227.4	233.3	227.9	242.3	.....
Profits after tax, total.....do.....	124.6	132.3	142.0	139.3	148.3	.....
Inventory valuation adjustment.....do.....	-23.0	-28.8	-39.9	-36.6	-44.0	-46.9
Capital consumption adjustment.....do.....	-13.8	-13.8	-14.5	-14.7	-17.6	-20.1
Net interest.....do.....	111.9	117.6	122.6	125.6	131.5	138.9
PERSONAL INCOME, QUARTERLY TOTAL.....do.....	1,742.5	1,803.1	1,852.6	1,892.5	1,946.6	2,000.5
Less: Personal tax and nontax payments.....do.....	266.0	278.2	280.4	290.7	306.6	321.7
Equals: Disposable personal income.....do.....	1,476.5	1,524.8	1,572.2	1,601.7	1,640.0	1,678.8
Less: Personal outlays.....do.....	1,405.6	1,453.4	1,493.0	1,515.8	1,569.7	1,622.9
Equals: Personal saving.....do.....	70.9	71.5	79.2	85.9	70.3	55.9
PERSONAL INCOME, BY SOURCE:						
SEASONALLY ADJUSTED, AT ANNUAL RATES:						
Total personal income.....bil. \$..	1,801.4	1,826.8	1,960.1	r1,979.2	r2,000.0	2,022.5
Wage and salary disbursements, total.....do....	1,154.4	1,166.8	1,247.9	1,257.4	r1,270.5	1,282.5
Commodity-producing industries, total.....do....	408.8	414.7	440.8	r443.8	r446.8	453.0
Manufacturing.....do.....	312.9	317.6	333.5	r336.0	r337.8	342.0
Distributive industries.....do.....	281.2	285.3	307.1	308.7	r313.1	314.8
Service industries.....do.....	239.6	240.9	264.8	r265.9	r270.1	273.8
Government and government enterprises.....do.....	224.8	226.0	235.2	239.1	r240.3	240.9
Other labor income.....do.....	111.9	113.2	126.4	128.0	129.6	131.2
Proprietors' income 1/.....do.....	.....	.....	.....	.....	.....	.....
Farm.....do.....	30.0	36.5	28.8	r29.0	r29.5	29.9
Nonfarm.....do.....	94.3	95.0	100.9	r101.1	r102.0	102.9
Rental income of persons with capital consumption adjustment.....do.....	27.1	27.1	25.0	26.8	27.0	27.2
Dividends.....do.....	49.6	50.4	53.0	53.6	54.2	55.2
Personal interest income.....do.....	174.3	176.4	197.1	r200.7	r204.4	207.8
Transfer payments.....do.....	231.5	233.7	262.7	r264.8	265.8	269.3
Less: Personal contrib. for social insurance.....do....	71.8	72.3	81.7	r82.2	r83.0	83.7
Total nonfarm income.....do.....	1,754.9	1,773.6	1,913.1	1,931.8	r1,951.8	1,973.7
INDUSTRIAL PRODUCTION (F.R. INDEX OF QUANTITY OUTPUT):						
SEASONALLY ADJ., TOTAL INDEX (INCL. UTIL.).....1967=100..	150.6	151.8	152.4	r152.2	p151.8	e152.2
BY MARKET GROUPINGS:						
PRODUCTS, TOTAL.....do.....	148.0	149.0	r149.9	r149.5	p149.4	e149.9
Final products.....do.....	145.3	146.1	r147.2	r146.8	p146.6	e147.3
MATERIALS, TOTAL.....do.....	154.5	156.2	r156.3	r156.4	p155.6	e155.8
Durable goods materials.....do.....	157.0	159.5	157.6	r157.4	p155.5	e155.3
Nondurable goods materials.....do.....	170.2	171.9	r176.7	r177.2	p177.2	e178.7
Energy materials.....do.....	129.3	128.8	r128.1	r128.6	p129.0	e128.7
BY INDUSTRY GROUPINGS:						
MINING AND UTILITIES.....do.....	144.8	145.0	r144.5	r145.3	p145.9	e146.8
MINING.....do.....	128.0	127.4	r125.8	r127.8	p129.2	e130.8
Metal mining.....do.....	124.3	123.8	r122.1	124.0	p127.1	.....
Coal.....do.....	144.6	144.7	142.6	r144.7	p141.9	e147.7
Oil and gas extraction.....do.....	124.8	123.8	r121.6	r123.8	p125.7	e127.1

r/ Revised. p/ Preliminary. e/ Estimated. c/ Corrected. 1/ With inventory valuation and capital consumption adjustment.

## MONTHLY BUSINESS STATISTICS—Continued

ITEM	1978		1979			
	Nov.	Dec.	Sept. <u>r/</u>	Oct. <u>r/</u>	Nov. <u>p/</u>	Dec. <u>e/</u>
GENERAL BUSINESS INDICATORS--Con.						
INDUSTRIAL PRODUCTION (F.R. INDEX OF QUANTITY OUTPUT)--Con.						
SEASONALLY ADJ., TOTAL INDEX (INCL. UTIL.)--Con.						
BY INDUSTRY GROUPINGS--Con.						
MINING AND UTILITIES--Con.						
UTILITIES.....1967=100..	163.7	164.7	165.3	164.8	164.6	164.7
Electric.....do....	185.2	186.7	184.1	185.6	.....	.....
MANUFACTURING, TOTAL.....do....						
Nondurable manufactures.....do....	151.6	152.9	153.5	153.2	152.6	153.1
Foods.....do....	160.4	161.7	164.6	163.9	164.2	165.1
Tobacco products.....do....	143.7	144.7	148.8	148.6	148.3	.....
Textile mill products.....do....	118.8	119.1	116.4	115.6	.....	.....
Apparel products.....do....	140.4	141.7	146.9	146.1	147.0	.....
Paper and products.....do....	135.8	136.5	131.2	128.5	.....	.....
Printing and publishing.....do....	146.7	148.5	155.3	154.1	154.4	154.7
Chemicals and products.....do....	133.7	134.4	137.1	136.9	136.9	137.8
Petroleum products.....do....	204.6	207.2	212.0	211.0	213.1	.....
Rubber and plastics products.....do....	150.2	151.3	143.1	141.9	141.7	143.0
Leather and products.....do....	263.0	263.3	272.9	274.2	270.7	.....
Durable manufactures.....do....	73.4	73.8	70.8	70.1	70.1	.....
Ordnance, pvt. and govt.....do....	145.5	146.8	145.9	145.8	144.7	144.8
Lumber and products.....do....	74.2	74.6	75.3	76.3	77.0	77.4
Furniture and fixtures.....do....	140.1	144.0	138.6	138.7	138.4	.....
Clay, glass, and stone products.....do....	158.6	157.6	162.0	162.7	162.0	.....
Primary metals.....do....	162.1	164.0	160.6	162.3	161.5	.....
Fabricated metal products.....do....	130.8	132.1	121.7	118.7	117.6	117.5
Nonelectrical machinery.....do....	145.6	147.1	146.5	147.5	146.4	147.4
Electrical machinery.....do....	157.8	158.1	165.1	162.3	162.6	163.3
Transportation equipment.....do....	165.2	167.7	176.7	177.0	177.7	179.0
Instruments.....do....	142.1	142.9	131.7	133.5	128.3	126.0
	171.3	173.1	172.9	175.0	173.2	176.0

r/ Revised. p/ Preliminary. e/ Estimated.

☆ U.S. GOVERNMENT PRINTING OFFICE: 1980--311-048/20

UNITED STATES  
GOVERNMENT PRINTING OFFICE  
DIVISION OF PUBLIC DOCUMENTS  
WASHINGTON, D.C. 20402

OFFICIAL BUSINESS

**First-Class Mail**

POSTAGE AND FEES PAID  
U.S. DEPARTMENT OF COMMERCE  
COM-209



**WEEKLY BUSINESS STATISTICS**