



WEEKLY BUSINESS STATISTICS

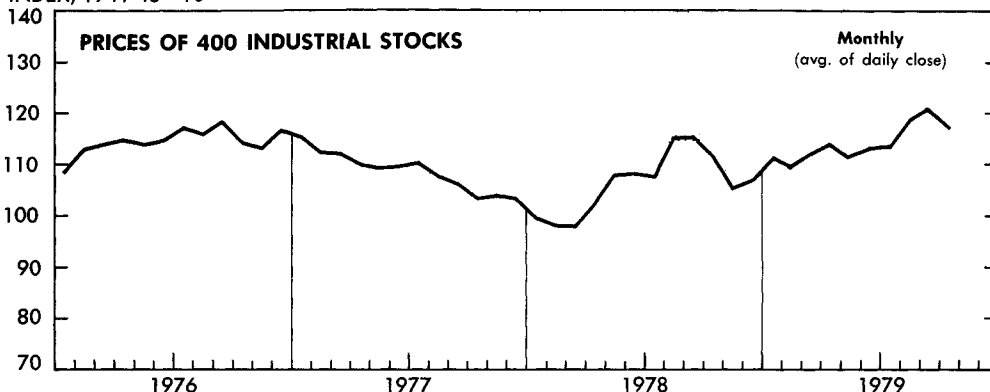


November 30, 1979

Annual Subscription: domestic, \$22.00; foreign, \$27.50 (no single copies sold). Order from Superintendent of Documents, U.S. Government Printing Office, Washington, D.C. 20402.

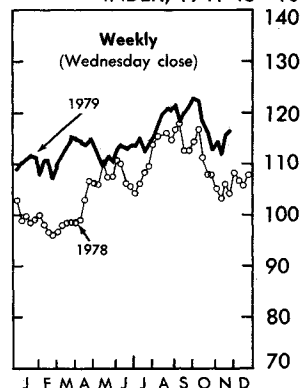
U.S. DEPARTMENT OF COMMERCE/BUREAU OF ECONOMIC ANALYSIS

INDEX, 1941-43=10

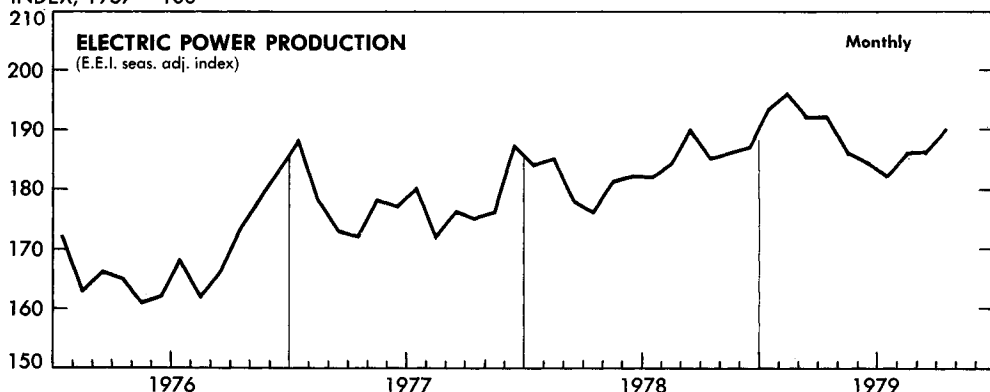


Data: Stand & Poor's Corp.

INDEX, 1941-43=10

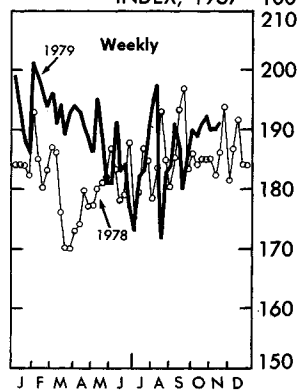


INDEX, 1967= 100

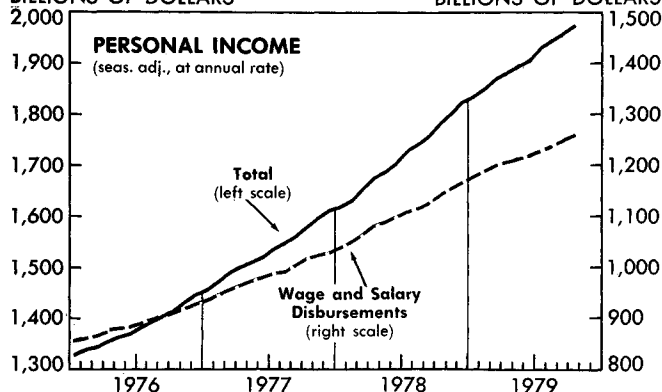


Data: Edison Electric Inst.

INDEX, 1967= 100

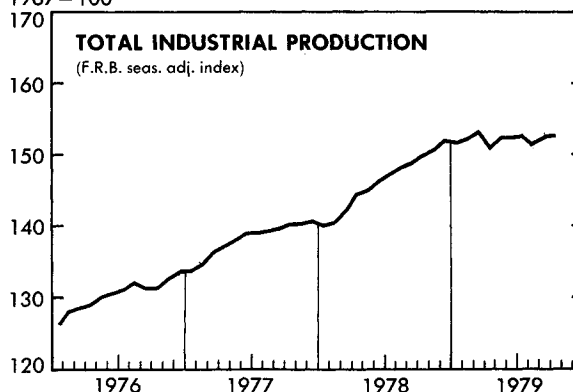


BILLIONS OF DOLLARS



Data: U.S. Dept. of Commerce

1967=100



Data: Federal Reserve Board

WEEKLY BUSINESS STATISTICS updates selected data that are published monthly in the SURVEY OF CURRENT BUSINESS.

WEEKLY BUSINESS STATISTICS¹

ITEM	1978		1979			
	Nov. 18	Nov. 25	Nov. 3	Nov. 10	Nov. 17	Nov. 24
SPOT MARKET PRICES, 22 COMMODITIES 2/.....1967=100..	352.0	251.1	278.1	278.4	279.7	282.9
9 Foodstuffs.....do....	246.7	247.9	245.9	245.2	251.0	252.6
13 Raw industrials.....do....	255.5	253.3	302.7	303.9	301.2	305.8
INITIAL UNEMPLOYMENT CLAIMS, State programs.....thous..	345	351	374	393	401
INSURED UNEMPLOYMENT, all programs.....do....	1,974	2,353	2,323	2,349
State programs (50 States, D.C., and Puerto Rico).....do....	1,847	2,208	2,144	2,185
FAILURES, INDUST, AND COMMERCIAL (Dun & Bradstreet).....number..	101	125	186	128	136	100
FINANCE:						
Currency in circulation 3/.....mil. \$..	110,775	111,242	119,528	120,129	121,230	e121,744
Federal Reserve bank credit outstanding, total 3/.....do....	126,996	130,417	135,930	134,404	135,454	138,651
Member bank reserve balances 3/.....do....	37,974	41,312	43,621	42,585	42,871	43,537
Excess reserves, estimated 3/.....do....	245	150	302	477	261	249
Assets and liabilities of large commercial banks: 4/						
Demand deposits, adjusted.....do....	119,010	113,169	105,151	103,418
Savings deposits.....do....	90,495	90,274	74,030	73,795
Loans and investments, gross adjusted, total.....do....	480,730	479,205	493,266	492,174
U.S. Government obligations.....do....	42,421	41,637	35,281	34,691
Commercial and industrial loans (gross).....do....	140,737	140,536	152,749	152,733
Real estate loans (gross).....do....	88,369	88,724	95,948	96,259
Bond yields, domestic corporate (Moody's) 3/.....percent..	9.40	9.38	11.32	11.41	11.37	11.40
Stock prices, 500 stocks (Stand. & Poor's) 4/.....1941-43=10..	92.71	95.48	101.82	99.87	103.39	103.89
Industrial, 400 stocks.....do....	102.94	106.04	114.07	111.86	115.90	116.43
PRODUCTION:						
Bituminous coal.....thous. sh. tons..	16,060	14,105	16,670	16,395	15,530
Electric power, by utilities.....mil. kw.-hr..	41,803	40,718	41,325	41,910	42,982
Motor vehicles (passenger cars).....number..	222,305	116,769	160,713	174,366	145,579	93,675
Petroleum (crude) and condensate 3/.....thous. bbl..	8,803	8,803	8,706	8,706	8,706
Steel, raw.....thous. sh. tons..	2,723	2,678	2,410	2,385	2,349	2,277
Rate of capability utilization 5/.....percent..	89.5	88.0	83.3	82.4	81.2	78.7
RAIL FREIGHT, REVENUE TON-MILES.....bil..	18.0	15.1	18.3	18.1	17.6

1/ Data do not always cover calendar weeks. 2/ Tuesday price. 3/ Daily average. 4/ Wednesday data. 5/ Capability for a full order book based on current availability of raw materials, fuels, supplies, and industry facilities. e/ Estimated.

MONTHLY BUSINESS STATISTICS

ITEM	1978			1979		
	II	III	IV	I	II	III r/
GENERAL BUSINESS INDICATORS						
NATIONAL INCOME AND PRODUCT						
SEASONALLY ADJUSTED QUARTERLY TOTALS AT ANNUAL RATES:						
GROSS NATIONAL PRODUCT, CURRENT DOLLARS, TOTAL.....bil. \$..	2,104.2	2,159.6	2,235.2	2,292.1	2,329.8	2,395.4
Personal consumption expenditures, total.....do....	1,331.2	1,369.3	1,415.4	1,454.2	r1,475.9	1,527.7
Durable goods, total.....do....	200.3	203.5	212.1	213.8	208.7	212.5
Motor vehicles and parts.....do....	93.5	92.4	94.9	97.7	89.1	88.8
Furniture and household equipment.....do....	76.5	78.9	82.7	82.1	84.2	87.5
Non-durable goods, total.....do....	521.8	536.7	558.1	571.1	581.2	604.1
Clothing and shoes.....do....	89.9	92.7	96.8	95.5	r96.9	100.9
Food.....do....	267.7	274.5	283.9	292.9	296.7	302.8
Gasoline and oil.....do....	49.0	51.5	55.0	58.4	60.2	68.1
Services, total.....do....	609.1	629.1	645.1	669.3	686.0	711.2
Household operation.....do....	88.9	92.5	93.7	99.1	99.7	102.6
Housing.....do....	209.0	215.0	222.1	229.5	236.3	245.0
Transportation.....do....	48.6	49.7	50.8	52.9	54.5	56.8
Gross private domestic investment, total.....do....	352.3	356.2	370.5	373.8	395.4	393.7
Fixed investment.....do....	326.5	336.1	349.8	354.6	361.9	378.4
Nonresidential.....do....	218.8	225.9	236.1	243.4	249.1	262.0
Residential.....do....	107.7	110.2	113.7	111.2	112.9	116.4
Change in business inventories.....do....	25.8	20.0	20.6	19.1	33.4	15.3
Net exports of goods and services.....do....	-7.6	-6.8	-4.5	4.0	-8.1	-3.5
Exports.....do....	205.7	213.8	224.9	238.5	243.7	266.8
Imports.....do....	213.3	220.6	229.4	234.4	251.9	270.3
Gov't purchase of goods and services, total.....do....	428.3	440.9	453.8	460.1	466.6	477.5
Federal.....do....	148.2	152.3	159.0	163.6	161.7	162.7
National defense.....do....	98.2	99.0	101.2	103.4	106.0	109.0
State and local.....do....	280.1	288.6	294.8	296.5	304.9	314.8

r/ Revised.

ITEM	1978			1979		
	II	III	IV	I	II	III <u>r/</u>
GENERAL BUSINESS INDICATORS--Con.						
NATIONAL INCOME AND PRODUCT--Con.						
SEASONALLY ADJUSTED QUARTERLY TOTALS AT ANNUAL RATES--Con.						
GROSS NATIONAL PRODUCT, 1972 DOLLARS, TOTAL.....bil. \$..	1,395.2	1,407.3	1,426.6	1,430.6	1,422.3	1,434.4
Personal consumption expenditures, total.....do....	894.8	905.3	920.3	921.8	915.0	925.9
Durable goods, total.....do....	147.8	147.5	152.1	150.2	144.8	146.3
Nondurable goods, total.....do....	339.4	344.7	351.9	348.1	344.1	349.0
Services, total.....do....	407.6	413.1	416.3	423.5	426.1	430.6
Gross private domestic investment, total.....do....	216.8	214.0	217.4	217.2	221.7	215.5
Fixed investment.....do....	201.2	201.8	205.5	204.9	203.5	207.6
Nonresidential.....do....	140.3	141.6	145.5	147.2	146.9	151.0
Residential.....do....	60.9	60.2	60.0	57.7	56.7	56.6
Change in business inventories.....do....	15.6	12.2	12.0	12.3	18.1	7.9
Net exports of goods and services.....do....	12.3	13.3	12.9	17.0	13.2	19.7
Exports.....do....	109.2	111.9	113.8	117.0	116.0	122.1
Imports.....do....	96.9	98.5	101.0	100.0	102.9	102.4
Gov't purchases of goods and services, total.....do....	271.3	274.7	276.0	274.7	272.4	273.3
Federal.....do....	96.6	98.5	99.3	101.1	98.1	97.8
State and local.....do....	174.7	176.2	176.6	173.6	174.3	175.6
NATIONAL INCOME, TOTAL.....do....	1,703.9	1,752.5	1,820.0	1,869.0	1,897.9	1,941.6
Compensation of employees, total.....do....	1,288.2	1,321.1	1,364.8	1,411.2	1,439.7	1,472.9
Proprietors' income, total <u>1/</u>do....	115.0	117.4	125.7	129.0	129.3	130.1
Farm.....do....	27.7	26.1	31.3	34.2	33.7	30.9
Nonfarm.....do....	87.3	91.3	94.4	94.8	95.5	99.2
Rental income of persons with capital consumption adjustment.....do....	24.4	26.8	27.1	27.3	26.8	26.6
Corp. profits, total <u>1/</u>do....	169.4	175.2	184.8	178.9	176.6	181.0
Profits before tax, total.....do....	207.2	212.0	227.4	233.3	227.9	242.5
Profits after tax, total.....do....	122.4	124.6	132.3	142.0	139.3	147.9
Inventory valuation adjustment.....do....	-25.1	-23.0	-28.8	-39.9	-36.6	-44.0
Capital consumption adjustment.....do....	-12.6	-13.8	-13.8	-14.5	-14.7	-17.6
Net interest.....do....	106.8	111.9	117.6	122.6	125.6	131.1
PERSONAL INCOME, QUARTERLY TOTAL.....do....	1,689.3	1,742.5	1,803.1	1,852.6	1,892.5	1,945.9
Less: Personal tax and nontax payments.....do....	252.1	266.0	278.2	280.4	290.7	306.5
Equals: Disposable personal income.....do....	1,437.3	1,476.5	1,524.8	1,572.2	1,601.7	1,639.4
Less: Personal outlays.....do....	1,366.1	1,405.6	1,453.4	1,493.0	1,515.8	1,568.9
Equals: Personal saving.....do....	71.2	70.9	71.5	79.2	85.9	70.5
PERSONAL INCOME, BY SOURCE:						
SEASONALLY ADJUSTED, AT ANNUAL RATES:						
Total personal income.....bil. \$..	1,756.1	1,781.0	r1,933.2	1,945.9	r1,958.6	1,975.1
Wage and salary disbursements, total.....do....	1,125.9	1,141.7	1,229.8	1,236.5	r1,248.3	1,259.0
Commodity-producing industries, total.....do....	396.9	402.3	437.5	436.6	r440.7	444.3
Manufacturing.....do....	303.3	307.6	332.0	330.3	r333.7	336.7
Distributive industries.....do....	274.6	278.3	300.8	304.3	r307.1	308.7
Service industries.....do....	234.5	237.7	258.1	260.9	r265.1	266.6
Government and government enterprises.....do....	219.8	223.4	233.5	234.8	235.4	239.5
Other labor income.....do....	109.3	110.6	123.3	124.9	126.4	128.0
Proprietors' income <u>1/</u>do....						
Farm.....do....	25.1	27.5	r32.8	31.0	r28.8	26.7
Nonfarm.....do....	92.0	93.8	97.9	99.5	r100.2	100.5
Rental income of persons with capital consumption adjustment.....do....	26.9	27.1	27.2	27.3	r25.0	26.8
Dividends.....do....	48.5	49.1	52.5	52.7	53.0	53.6
Personal interest income.....do....	170.0	172.3	r191.8	193.8	r196.0	198.0
Transfer payments.....do....	228.9	230.1	r258.4	261.2	r262.4	264.8
Less: Personal contrib. for social insurance.....do....	70.6	71.2	80.8	81.0	r81.7	82.2
Total nonfarm income.....do....	1,715.0	1,737.3	r1,882.3	1,896.7	r1,911.5	1,930.1
INDUSTRIAL PRODUCTION (F.R. INDEX OF QUANTITY OUTPUT):						
SEASONALLY ADJ., TOTAL INDEX (INCL. UTIL.).....1967=100..	148.6	149.7	152.8	151.6	p152.3	e152.5
BY MARKET GROUPINGS:						
PRODUCTS, TOTAL.....do....	146.9	147.5	r149.7	148.7	p149.7	e149.7
Final products.....do....	144.5	145.1	r147.1	145.5	p146.9	e146.8
MATERIALS, TOTAL.....do....	151.2	153.2	r157.6	156.3	p156.4	e156.8
Durable goods materials.....do....	153.4	155.5	r160.7	157.5	p157.4	e157.7
Nondurable goods materials.....do....	167.8	168.8	r174.6	175.8	p176.6	e176.9
Energy materials.....do....	125.6	128.6	r129.1	129.3	p128.9	e129.9
BY INDUSTRY GROUPINGS:						
MINING AND UTILITIES.....do....	142.6	144.6	r143.7	145.0	p145.2	e146.3
MINING.....do....	124.4	127.9	r124.7	127.1	p126.3	e127.6
Metal mining.....do....	115.6	122.1	r128.6	126.5	p122.9
Coal.....do....	114.0	141.9	137.1	144.1	p142.6	e146.7
Oil and gas extraction.....do....	125.4	125.5	r120.4	122.6	p122.1	e123.2

r/ Revised. p/ Preliminary. e/ Estimated. 1/ With inventory valuation and capital consumption adjustment.

MONTHLY BUSINESS STATISTICS—Continued

ITEM	1978		1979			
	Sept.	Oct.	July <u>r/</u>	Aug. <u>r/</u>	Sept. <u>p/</u>	Oct. <u>e/</u>
GENERAL BUSINESS INDICATORS--Con.						
INDUSTRIAL PRODUCTION (F.R. INDEX OF QUANTITY OUTPUT)--Con.						
SEASONALLY ADJ., TOTAL INDEX (INCL. UTIL.)--Con.						
BY INDUSTRY GROUPINGS--Con.						
MINING AND UTILITIES--Con.						
UTILITIES.....1967=100..	163.0	163.2	164.8	165.1	166.4	167.2
Electric.....do....	184.5	184.7	182.2	182.7
MANUFACTURING, TOTAL.....do....						
Nondurable manufactures.....do....	149.6	150.7	154.1	152.4	153.4	153.4
Foods.....do....	159.3	159.5	164.1	164.4	164.3	164.8
Tobacco products.....do....	143.7	143.2	149.4	148.3	148.2
Textile mill products.....do....	120.3	119.0	118.9	107.5
Apparel products.....do....	138.6	139.6	143.0	143.3	145.1
Paper and products.....do....	139.6	136.8	129.7	130.2
Printing and publishing.....do....	144.2	145.8	154.0	153.9	155.1	154.1
Chemicals and products.....do....	132.6	132.6	135.6	137.7	137.7	138.2
Petroleum products.....do....	201.3	202.7	210.5	213.0	212.5
Rubber and plastics products.....do....	147.6	147.6	143.9	143.1	142.8	143.1
Leather and products.....do....	260.9	262.3	278.0	276.6	273.1
Durable manufactures.....do....	72.9	72.4	69.7	67.7	70.3
Ordnance, pvt. and govt.....do....	142.9	144.6	147.2	144.2	145.8	145.5
Lumber and products.....do....	73.8	74.2	74.6	74.9	75.2	75.9
Furniture and fixtures.....do....	136.2	138.1	135.2	136.9	137.3
Clay, glass, and stone products.....do....	160.7	159.9	159.5	161.7	161.5
Primary metals.....do....	159.8	161.3	163.3	162.5	162.7
Fabricated metal products.....do....	127.4	129.4	127.1	121.1	122.0	121.8
Nonelectrical machinery.....do....	144.2	144.9	149.3	147.6	147.5	147.7
Electrical machinery.....do....	156.4	157.5	165.3	166.1	165.6	161.0
Transportation equipment.....do....	163.3	164.2	174.4	171.4	174.0	175.3
Instruments.....do....	134.9	139.7	135.5	124.7	131.8	133.4
	170.4	170.3	174.0	173.9	173.5	174.5

r/ Revised. p/ Preliminary. e/ Estimated.

☆ U.S. GOVERNMENT PRINTING OFFICE: 1980--311-048/12

UNITED STATES
GOVERNMENT PRINTING OFFICE
DIVISION OF PUBLIC DOCUMENTS
WASHINGTON, D.C. 20402

OFFICIAL BUSINESS

First-Class Mail

POSTAGE AND FEES PAID
U.S. DEPARTMENT OF COMMERCE
COM-209



WEEKLY BUSINESS STATISTICS