



# WEEKLY BUSINESS STATISTICS

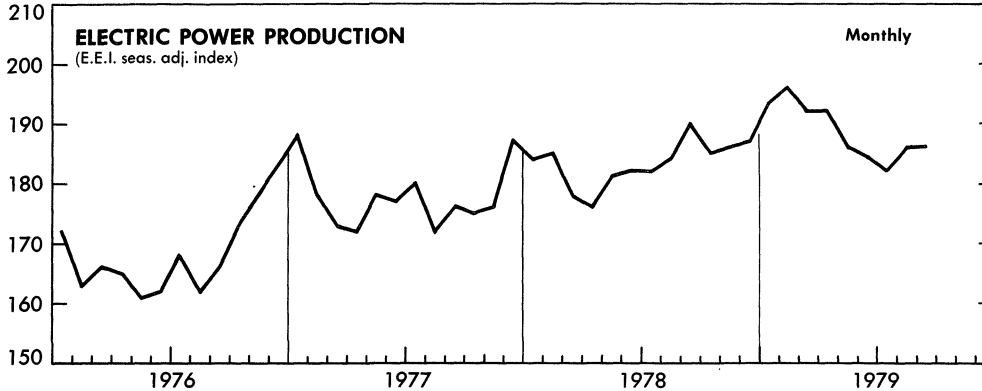


October 26, 1979

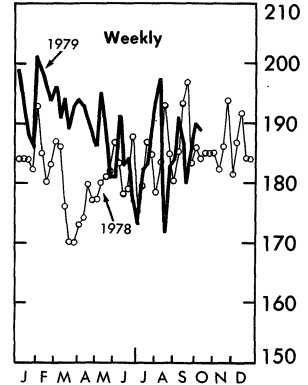
Annual Subscription: domestic, \$22.00; foreign, \$27.50 (no single copies sold). Order from Superintendent of Documents, U.S. Government Printing Office, Washington, D.C. 20402.

## U.S. DEPARTMENT OF COMMERCE/BUREAU OF ECONOMIC ANALYSIS

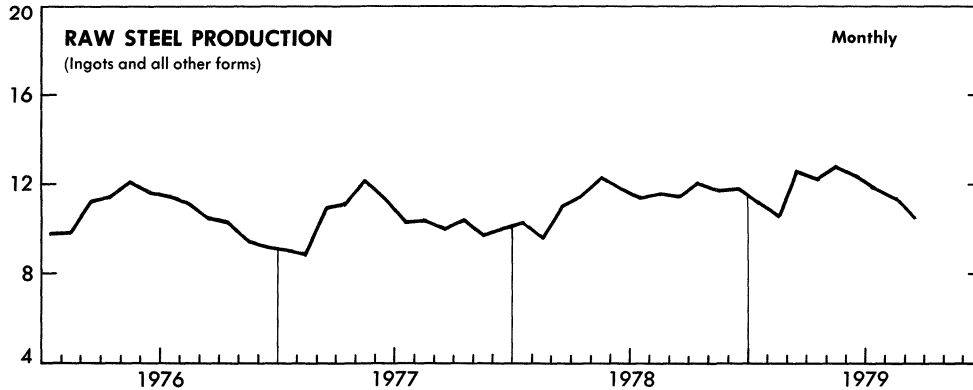
INDEX, 1967=100



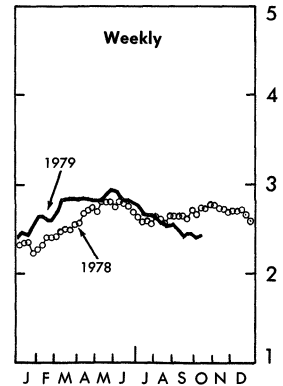
INDEX, 1967=100



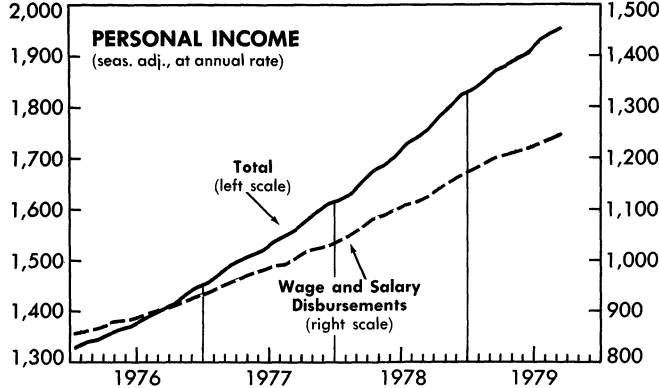
MILLIONS OF SHORT TONS



MILLIONS OF SHORT TONS

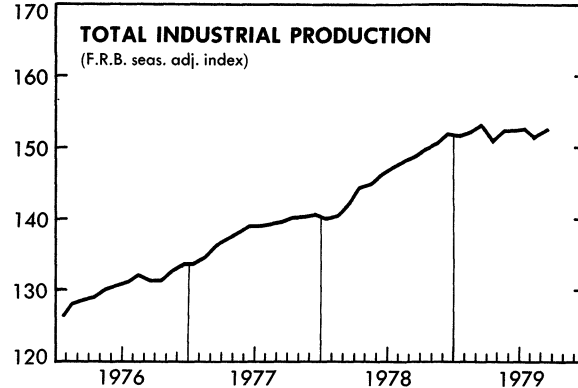


BILLIONS OF DOLLARS



BILLIONS OF DOLLARS

1967=100



WEEKLY BUSINESS STATISTICS updates selected data that are published monthly in the SURVEY OF CURRENT BUSINESS.

WEEKLY BUSINESS STATISTICS<sup>1</sup>

ITEM	1978		1979			
	Oct. 14	Oct. 21	Sept. 29	Oct. 6	Oct. 13	Oct. 20
SPOT MARKET PRICES, 22 COMMODITIES <sup>2/</sup> .....1967=100..	248.6	251.3	279.4	289.4	286.9	283.5
9 Foodstuffs.....do....	253.0	254.5	256.8	259.7	256.2	251.5
13 Raw industrials.....do....	245.5	248.9	296.1	311.7	310.2	307.9
INITIAL UNEMPLOYMENT CLAIMS, State programs.....thous..	262	287	303	379	335	.....
INSURED UNEMPLOYMENT, all programs.....do....	2,075	2,011	2,099	2,061	.....	.....
State programs (50 States, D.C., and Puerto Rico).....do....	1,860	1,816	1,959	1,921	.....	.....
FAILURES, INDUST. AND COMMERCIAL (Dun & Bradstreet).....number..	105	127	162	171	163	172
FINANCE:						
Currency in circulation <sup>3/</sup> .....mil. \$..	108,901	109,259	118,642	118,880	119,875	e120,270
Federal Reserve bank credit outstanding, total <sup>3/</sup> .....do....	131,739	134,274	134,188	135,461	133,011	135,424
Member bank reserve balances <sup>3/</sup> .....do....	37,997	38,756	41,615	42,124	41,313	42,590
Excess reserves, estimated <sup>3/</sup> .....do....	350	-119	93	357	594	-7
Assets and liabilities of large commercial banks: <sup>4/</sup>						
Demand deposits, adjusted.....do....	118,500	117,121	99,825	106,031	107,221	.....
Savings deposits.....do....	91,834	91,665	76,076	76,773	76,559	.....
Loans and investments, gross adjusted, total.....do....	469,285	470,721	490,481	495,341	496,338	.....
U.S. Government obligations.....do....	42,532	41,915	35,717	34,204	35,977	.....
Commercial and industrial loans (gross).....do....	138,365	138,227	152,459	153,392	153,800	.....
Real estate loans (gross).....do....	86,618	87,063	93,727	94,094	94,440	.....
Bond yields, domestic corporate (Moody's) <sup>3/</sup> .....percent..	9.15	9.21	10.02	10.17	10.45	10.74
Stock prices, 500 stocks (Stand. & Poor's) <sup>4/</sup> .....1941-43=10..	105.39	100.49	109.96	109.59	105.30	103.39
Industrial, 400 stocks.....do....	116.96	111.37	122.83	122.53	118.02	115.71
PRODUCTION:						
Bituminous coal.....thous. sh. tons..	15,225	15,460	16,290	16,285	16,740	.....
Electric power, by utilities.....mil. kw.-hr..	40,042	40,108	41,172	41,357	40,940	.....
Motor vehicles (passenger cars).....number..	209,283	202,813	165,099	160,669	160,118	178,989
Petroleum (crude) and condensate <sup>3/</sup> .....thous. bbl..	8,806	8,806	8,354	8,614	8,614	.....
Steel, raw.....thous. sh. tons..	2,739	2,730	2,438	2,404	2,412	.....
Rate of capability utilization <sup>5/</sup> .....percent..	90.0	89.7	82.1	83.1	83.4	.....
RAIL FREIGHT, REVENUE TON-MILES.....bil..	18.4	18.5	18.2	18.4	18.4	.....

<sup>1/</sup> Data do not always cover calendar weeks. <sup>2/</sup> Tuesday price. <sup>3/</sup> Daily average. <sup>4/</sup> Wednesday data. <sup>5/</sup> Capability for a full order book based on current availability of raw materials, fuels, supplies, and industry facilities. e/ Estimated.

## MONTHLY BUSINESS STATISTICS

ITEM	1978			1979		
	II	III	IV	I	II	III p/
GENERAL BUSINESS INDICATORS						
NATIONAL INCOME AND PRODUCT						
SEASONALLY ADJUSTED QUARTERLY TOTALS AT ANNUAL RATES:						
GROSS NATIONAL PRODUCT, CURRENT DOLLARS, TOTAL...bil. \$..	2,104.2	2,159.6	2,235.2	2,292.1	2,329.8	2,391.5
Personal consumption expenditures, total.....do....	1,331.2	1,369.3	1,415.4	1,454.2	r1,450.9	1,528.6
Durable goods, total.....do....	200.3	203.3	212.1	213.8	208.7	213.7
Motor vehicles and parts.....do....	93.5	92.4	94.9	97.7	89.1	89.8
Furniture and household equipment.....do....	76.5	78.9	82.7	82.1	84.2	88.2
Nondurable goods, total.....do....	521.8	536.7	558.1	571.1	581.2	602.5
Clothing and shoes.....do....	89.9	92.7	96.8	95.5	96.6	99.3
Food.....do....	267.7	274.5	283.9	292.9	296.7	302.0
Gasoline and oil.....do....	49.0	51.5	55.0	58.4	60.2	70.3
Services, total.....do....	609.1	629.1	645.1	669.3	686.0	712.4
Household operation.....do....	88.9	92.5	93.7	99.1	99.7	104.5
Housing.....do....	209.0	215.0	222.1	229.5	236.3	245.0
Transportation.....do....	48.6	49.7	50.8	52.9	54.5	56.9
Gross private domestic investment, total.....do....	352.3	356.2	370.5	373.8	395.4	392.1
Fixed investment.....do....	326.5	336.1	349.8	354.6	361.9	372.1
Nonresidential.....do....	218.8	225.9	236.1	243.4	249.1	257.2
Residential.....do....	107.7	110.2	113.7	111.2	112.9	114.9
Change in business inventories.....do....	25.8	20.0	20.6	19.1	33.4	20.0
Net exports of goods and services.....do....	-7.6	-6.8	-4.5	4.0	-8.1	-5.3
Exports.....do....	205.7	213.8	224.9	238.5	243.7	266.4
Imports.....do....	213.3	220.6	229.4	234.4	251.9	271.7
Gov't purchase of goods and services, total.....do....	428.3	440.9	453.8	460.1	466.6	476.2
Federal.....do....	148.2	152.3	159.0	163.6	161.7	162.5
National defense.....do....	98.2	99.0	101.2	103.4	106.0	108.5
State and local.....do....	280.1	288.6	294.8	296.5	304.9	313.7

p/ Preliminary.

ITEM	1978			1979		
	II	III	IV	I	II	III p/
GENERAL BUSINESS INDICATORS--Con.						
NATIONAL INCOME AND PRODUCT--Con.						
SEASONALLY ADJUSTED QUARTERLY TOTALS AT ANNUAL RATES--Con.						
GROSS NATIONAL PRODUCT, 1972 DOLLARS, TOTAL.....bil. \$..	1,395.2	1,407.3	1,426.6	1,430.6	1,422.3	1,430.8
Personal consumption expenditures, total.....do....	894.8	905.3	920.3	921.8	915.0	924.8
Durable goods, total.....do....	147.8	147.5	152.1	150.2	144.8	147.0
Nondurable goods, total.....do....	339.4	344.7	351.9	348.1	344.1	346.6
Services, total.....do....	407.6	413.1	416.3	423.5	426.1	431.2
Gross private domestic investment, total.....do....	216.8	214.0	217.4	217.2	221.7	214.2
Fixed investment.....do....	201.2	201.8	205.5	204.9	203.5	204.2
Nonresidential.....do....	140.3	141.6	145.5	147.2	146.9	148.2
Residential.....do....	60.9	60.2	60.0	57.7	56.7	56.0
Change in business inventories.....do....	15.6	12.2	12.0	12.3	18.1	10.0
Net exports of goods and services.....do....	12.3	13.3	12.9	17.0	13.2	19.4
Exports.....do....	109.2	111.9	113.8	117.0	116.0	122.5
Imports.....do....	96.9	98.5	101.0	100.0	102.9	103.1
Gov't purchases of goods and services, total.....do....	271.3	274.7	276.0	274.7	272.4	272.6
Federal.....do....	96.6	98.5	99.3	101.1	98.1	97.6
State and local.....do....	174.7	176.2	176.6	173.6	174.3	175.0
NATIONAL INCOME, TOTAL.....do....	1,703.9	1,752.5	1,820.0	1,869.0	1,897.9	.....
Compensation of employees, total.....do....	1,288.2	1,321.1	1,364.8	1,411.2	1,439.7	1,471.8
Proprietors' income, total 1/.....do....	115.0	117.4	125.7	129.0	129.3	128.6
Farm.....do....	27.7	26.1	31.3	34.2	33.7	29.7
Nonfarm.....do....	87.3	91.3	94.4	94.8	95.5	98.9
Rental income of persons with capital consumption adjustment.....do....	24.4	26.8	27.1	27.3	26.8	26.5
Corp. profits, total 1/.....do....	169.4	175.2	184.8	178.9	176.6	.....
Profits before tax, total.....do....	207.2	212.0	227.4	233.3	227.9	.....
Profits after tax, total.....do....	122.4	124.6	132.3	142.0	139.3	.....
Inventory valuation adjustment.....do....	-25.1	-23.0	-28.8	-39.9	-36.6	-40.8
Capital consumption adjustment.....do....	-12.6	-13.8	-13.8	-14.5	-14.7	-17.6
Net interest.....do....	106.8	111.9	117.6	122.6	125.6	130.8
PERSONAL INCOME, QUARTERLY TOTAL.....do....	1,689.3	1,742.5	1,803.1	1,852.6	1,892.5	1,943.4
Less: Personal tax and nontax payments.....do....	252.1	266.0	278.2	280.4	290.7	306.4
Equals: Disposable personal income.....do....	1,437.3	1,476.5	1,524.8	1,572.2	1,601.7	1,636.9
Less: Personal outlays.....do....	1,366.1	1,405.6	1,453.4	1,493.0	1,515.8	1,570.0
Equals: Personal saving.....do....	71.2	70.9	71.5	79.2	85.9	66.9
	1978			1979		
	Aug.	Sept.	June	July	Aug.	Sept.
PERSONAL INCOME, BY SOURCE:						
SEASONALLY ADJUSTED, AT ANNUAL RATES:						
Total personal income.....bil. \$..	1,741.3	1,756.1	1,995.1	r1,931.9	r1,943.0	1,955.2
Wage and salary disbursements, total.....do....	1,115.0	1,125.9	1,220.5	r1,229.8	r1,235.5	1,246.0
Commodity-producing industries, total.....do....	392.6	396.9	434.5	r437.5	436.2	439.7
Manufacturing.....do....	299.7	303.3	329.7	r332.0	330.2	332.8
Distributive industries.....do....	272.4	274.6	298.8	r300.8	r304.0	306.5
Service industries.....do....	231.2	234.5	254.7	r258.1	r260.4	264.3
Government and government enterprises.....do....	218.7	219.8	232.6	r233.5	r234.9	235.4
Other labor income.....do....	108.2	109.3	121.8	123.3	124.9	126.4
Proprietors' income 1/.....do....						
Farm.....do....	25.7	25.1	33.4	r31.8	r29.6	27.6
Nonfarm.....do....	91.7	92.0	95.8	r97.9	r99.2	99.6
Rental income of persons with capital consumption adjustment.....do....	26.9	26.9	27.2	r27.2	r27.2	24.9
Dividends.....do....	48.0	48.5	52.6	52.5	52.7	53.0
Personal interest income.....do....	167.1	170.0	189.4	191.6	r193.7	195.6
Transfer payments.....do....	228.9	228.9	244.7	r258.4	r261.2	263.5
Less: Personal contrib. for social insurance.....do....	70.1	70.6	80.2	r80.8	r81.0	81.6
Total nonfarm income.....do....	1,699.9	1,715.0	1,853.7	r1,882.0	r1,895.2	1,909.3
INDUSTRIAL PRODUCTION (F.R. INDEX OF QUANTITY OUTPUT):						
SEASONALLY ADJ., TOTAL INDEX (INCL. UTIL.).....1967=100..						
BY MARKET GROUPINGS:						
PRODUCTS, TOTAL.....do....	146.6	146.9	r150.2	r149.9	p148.6	e149.7
Final products.....do....	144.2	144.5	147.6	r147.4	p145.7	e147.1
MATERIALS, TOTAL.....do....	150.2	151.2	r156.5	r157.2	p156.0	e156.2
Durable goods materials.....do....	151.9	153.4	r159.5	r157.3	p157.3	e157.3
Nondurable goods materials.....do....	165.3	167.8	r173.4	r175.2	p175.2	e175.9
Energy materials.....do....	127.5	125.6	r128.3	128.6	p129.6	e129.4
BY INDUSTRY GROUPINGS:						
MINING AND UTILITIES.....do....	143.2	142.6	r143.0	r144.3	p145.3	e145.6
MINING.....do....	126.2	124.4	r123.9	r125.0	p126.6	e126.8
Metal mining.....do....	118.0	115.6	r123.2	r128.8	p125.1	.....
Coal.....do....	125.9	114.0	137.5	r137.1	p145.8	e141.1
Oil and gas extraction.....do....	126.2	125.4	r119.6	r120.7	p121.8	e122.8

r/ Revised. p/ Preliminary. e/ Estimated. 1/ With inventory valuation and capital consumption adjustment.

## MONTHLY BUSINESS STATISTICS—Continued

ITEM	1978		1979			
	Aug.	Sept.	June	July r/	Aug. p/	Sept. e/
GENERAL BUSINESS INDICATORS--Con.						
INDUSTRIAL PRODUCTION (F.R. INDEX OF QUANTITY OUTPUT)--Con.						
SEASONALLY ADJ., TOTAL INDEX (INCL. UTIL.)--Con.						
BY INDUSTRY GROUPINGS--Con.						
MINING AND UTILITIES--Con.						
UTILITIES.....1967=100..	162.2	163.0	r164.2	165.8	166.1	166.7
Electric.....do....	183.3	184.5	182.4	184.0	.....	.....
MANUFACTURING, TOTAL.....do....						
Nondurable manufactures.....do....	148.6	149.6	r153.9	154.0	152.3	153.2
Foods.....do....	158.4	159.3	r163.0	163.9	164.1	164.4
Foods.....do....	143.9	143.7	r149.5	149.4	148.7	.....
Tobacco products.....do....	118.5	120.3	118.3	118.9	.....	.....
Textile mill products.....do....	137.1	138.6	r144.6	144.3	142.7	.....
Apparel products.....do....	137.7	139.6	r132.0	130.7	.....	.....
Paper and products.....do....	142.2	144.2	148.0	153.0	152.7	152.8
Printing and publishing.....do....	131.9	132.6	136.9	135.2	137.0	137.4
Chemicals and products.....do....	199.3	201.3	207.8	209.7	212.0	.....
Petroleum products.....do....	146.0	147.6	r143.9	144.6	143.7	143.8
Rubber and plastics products.....do....	263.4	260.9	r270.0	276.0	271.4	.....
Leather and products.....do....	73.3	72.9	70.1	69.7	67.7	.....
Durable manufactures.....do....	141.8	142.9	147.6	147.2	144.1	145.5
Ordnance, pvt. and govt.....do....	74.0	73.8	75.1	75.5	76.3	76.5
Lumber and products.....do....	136.0	136.2	r136.8	135.2	136.2	.....
Furniture and fixtures.....do....	159.5	160.7	159.6	159.5	160.3	.....
Clay, glass, and stone products.....do....	157.6	159.8	r162.7	163.3	162.5	.....
Primary metals.....do....	124.9	127.4	124.3	126.8	121.0	119.7
Fabricated metal products.....do....	143.7	144.2	r149.3	149.3	148.1	148.9
Nonelectrical machinery.....do....	155.5	156.4	164.5	165.5	165.6	166.2
Electrical machinery.....do....	161.5	163.3	r175.1	174.4	172.1	173.7
Transportation equipment.....do....	134.2	134.9	139.4	135.5	124.0	130.4
Instruments.....do....	170.3	170.4	r175.9	174.0	173.9	173.8

r/ Revised. p/ Preliminary. e/ Estimated.

☆ U.S. GOVERNMENT PRINTING OFFICE: 1980--311-048/07

UNITED STATES  
GOVERNMENT PRINTING OFFICE  
DIVISION OF PUBLIC DOCUMENTS  
WASHINGTON, D.C. 20402

OFFICIAL BUSINESS

**First-Class Mail**

POSTAGE AND FEES PAID  
U.S. DEPARTMENT OF COMMERCE  
COM-209

**WEEKLY BUSINESS STATISTICS**