



WEEKLY BUSINESS STATISTICS

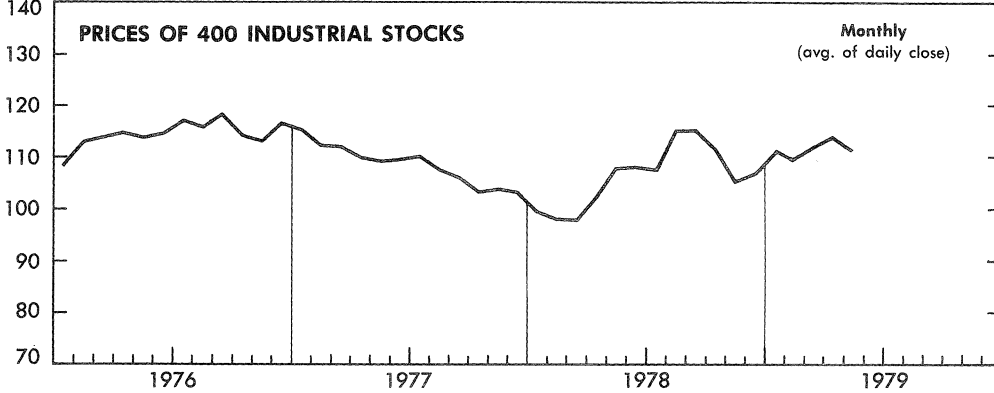


June 29, 1979

Annual Subscription: domestic, \$22.00; foreign, \$27.50 (no single copies sold). Order from Superintendent of Documents, U.S. Government Printing Office, Washington, D.C. 20402.

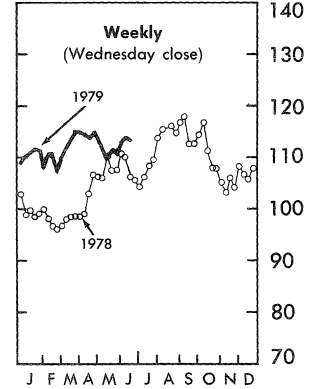
U.S. DEPARTMENT OF COMMERCE/BUREAU OF ECONOMIC ANALYSIS

INDEX, 1941-43=10

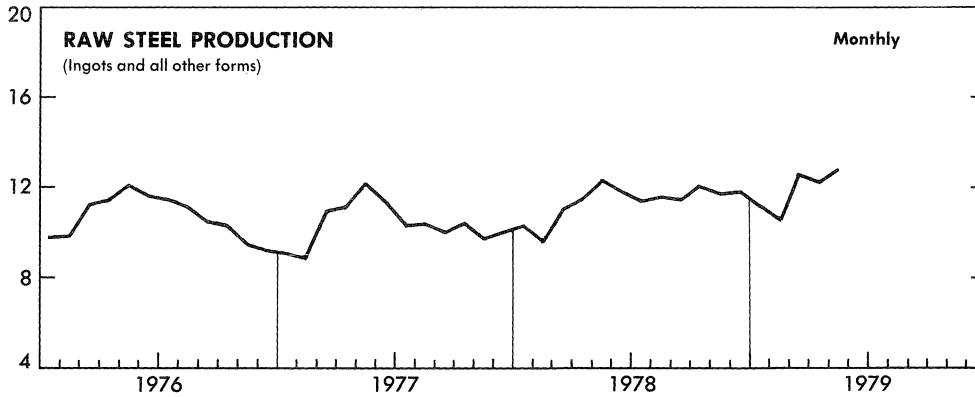


Data: Stand & Poor's Corp.

INDEX, 1941-43=10

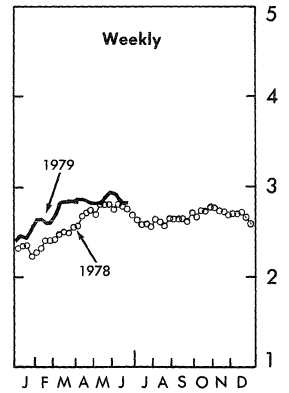


MILLIONS OF SHORT TONS

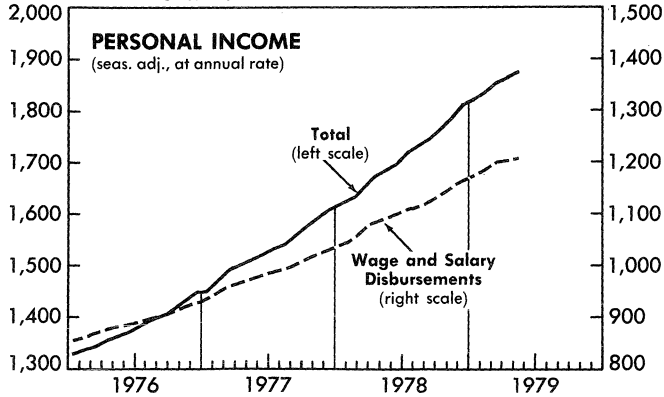


Data: Amer. Iron & Steel Inst.

MILLIONS OF SHORT TONS

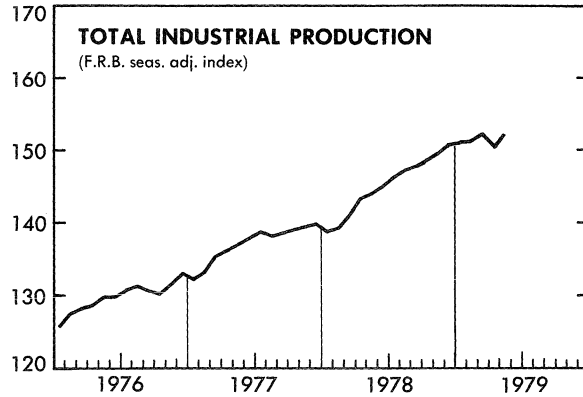


BILLIONS OF DOLLARS



Data: U.S. Dept. of Commerce

1967=100



Data: Federal Reserve Board

WEEKLY BUSINESS STATISTICS updates selected data that are published monthly in the SURVEY OF CURRENT BUSINESS.

WEEKLY BUSINESS STATISTICS¹

ITEM	1978		1979			
	June 17	June 24	June 2	June 9	June 16	June 23
SPOT MARKET PRICES, 22 COMMODITIES ^{2/}1967=100..	229.2	229.4	277.6	276.3	277.8	276.8
9 Foodstuffs.....do.....	240.5	240.0	254.5	250.5	254.4	256.1
13 Raw industrials.....do.....	221.5	222.2	294.6	295.5	295.1	292.0
INITIAL UNEMPLOYMENT CLAIMS, State programs.....thous..	287	297	262	323	312
INSURED UNEMPLOYMENT, all programs.....do.....	2,316	2,314	2,200	2,126
State programs (50 States, D.C., and Puerto Rico).....do....	1,973	1,975	2,055	1,985
FAILURES, INDUST. AND COMMERCIAL (Dun & Bradstreet)...number..	137	135	93	129	157	171
FINANCE:						
Currency in circulation ^{3/}mil. \$..	105,830	105,668	114,659	115,334	115,852	e115,843
Federal Reserve bank credit outstanding, total ^{3/}do....	117,964	124,897	128,654	127,146	128,086	130,134
Member bank reserve balances ^{3/}do.....	37,155	37,742	39,823	39,705	39,329	40,537
Excess reserves, estimated ^{3/}do.....	113	226	238	413	72	81
Assets and liabilities of large commercial banks: ^{4/}						
Demand deposits, adjusted.....do.....	115,964	113,680	96,446	104,232	103,802
Savings deposits.....do.....	93,008	92,874	76,583	77,154	77,126
Loans and investments, gross adjusted, total.....do....	454,739	453,062	460,926	468,851	468,239
U.S. Government obligations.....do.....	44,577	44,247	37,016	39,297	38,882
Commercial and industrial loans (gross).....do....	133,702	135,113	141,323	141,843	142,089
Real estate loans (gross).....do.....	79,812	80,213	86,217	86,502	86,948
Bond yields, domestic corporate (Moody's) ^{3/}percent..	9.10	9.12	9.94	9.90	9.81	9.76
Stock prices, 500 stocks (Stand. & Poor's) ^{4/}1941-43=10..	99.48	96.01	99.11	101.30	102.31	101.63
Industrial, 400 stocks.....do.....	109.95	106.13	110.23	112.72	113.61	112.73
PRODUCTION:						
Bituminous coal.....thous. sh. tons..	15,730	15,915	13,745	15,970	15,340
Electric power, by utilities.....mil. kw.-hr..	42,783	44,493	40,451	44,056	43,950
Motor vehicles (passenger cars).....number..	188,837	195,587	176,735	195,926	182,414	190,329
Petroleum (crude) and condensate ^{3/}thous. bbl..	8,918	8,918	8,547	8,547	8,547
Steel, raw.....thous. sh. tons..	2,781	2,749	2,919	2,840	2,822	2,831
Rate of capability utilization ^{5/}percent..	91.5	90.5	95.8	93.2	92.6	92.9
RAIL FREIGHT, REVENUE TON-MILES.....bil..	18.2	18.0	16.7	18.7	18.9

^{1/} Data do not always cover calendar weeks. ^{2/} Tuesday price. ^{3/} Daily average. ^{4/} Wednesday data. ^{5/} Capability for a full order book based on current availability of raw materials, fuels, supplies, and industry facilities. ^{e/} Estimated.

MONTHLY BUSINESS STATISTICS

ITEM	1977	1978				1979
	IV	I	II	III	IV	I ^{r/}
GENERAL BUSINESS INDICATORS						
NATIONAL INCOME AND PRODUCT						
SEASONALLY ADJUSTED QUARTERLY TOTALS AT ANNUAL RATES:						
GROSS NATIONAL PRODUCT, TOTAL.....bil. \$..	1,958.1	1,992.0	2,087.5	2,136.1	2,214.8	2,267.3
Personal consumption expenditures, total.....do....	1,255.2	1,276.7	1,322.9	1,356.9	1,403.9	1,442.2
Durable goods, total.....do.....	187.2	183.5	197.8	199.5	209.1	211.5
Motor vehicles and parts.....do.....	84.0	84.1	92.5	89.8	92.6	95.9
Furniture and household equipment.....do....	75.3	72.1	76.5	78.9	83.2	82.7
Nondurable goods, total.....do.....	496.9	501.4	519.3	531.7	553.4	567.7
Clothing and shoes.....do.....	86.7	82.9	87.5	90.5	95.3	94.1
Food.....do.....	252.6	257.7	267.8	272.0	279.9	289.2
Gasoline and oil.....do.....	47.5	48.3	49.1	51.5	55.8	59.4
Services, total.....do.....	571.1	591.8	605.8	625.8	641.4	663.1
Household operation.....do.....	84.6	89.6	88.9	92.6	94.1	98.7
Housing.....do.....	192.0	198.1	204.1	210.1	217.0	222.6
Transportation.....do.....	47.3	49.7	52.1	53.7	55.0	56.7
Gross private domestic investment, total.....do....	313.5	322.7	345.4	350.1	364.0	370.4
Fixed investment.....do.....	300.5	306.0	325.3	336.5	350.5	350.5
Nonresidential.....do.....	200.3	205.6	220.1	227.5	237.1	244.0
Residential.....do.....	100.2	100.3	105.3	109.0	113.4	111.1
Change in business inventories.....do.....	13.1	16.7	20.1	13.6	13.5	15.3
Net exports of goods and services.....do....	-23.2	-24.1	-5.5	-10.7	-7.6	-3.7
Exports.....do.....	172.1	181.7	205.4	210.1	221.9	235.0
Imports.....do.....	195.2	205.8	210.9	220.8	229.5	238.7
Gov't purchase of goods and services, total.....do....	412.5	416.7	424.7	439.8	454.5	458.4
Federal.....do.....	152.2	151.5	147.2	154.0	162.5	164.5
National defense.....do.....	97.1	97.9	98.6	99.6	102.1	103.9
State and local.....do.....	260.3	265.2	277.6	285.8	292.0	293.9

^{r/} Revised.

ITEM	1977	1978				1979	
	IV	I	II	III	IV	I r/	
GENERAL BUSINESS INDICATORS--Con.							
NATIONAL INCOME AND PRODUCT--Con.							
SEASONALLY ADJUSTED QUARTERLY TOTALS AT ANNUAL RATES--Con.							
NATIONAL INCOME, TOTAL.....bil. \$..	1,576.9	1,603.1	1,688.1	1,728.4	1,795.2	1,838.7	
Compensation of employees, total.....do....	1,199.7	1,241.0	1,287.8	1,317.1	1,359.8	1,406.6	
Proprietors' income, total <u>1/</u>do....	107.3	105.0	110.1	114.5	123.0	123.4	
Farm.....do....	25.1	21.9	24.0	25.0	30.4	30.6	
Nonfarm.....do....	82.5	83.1	86.1	89.6	92.6	92.9	
Rental income of persons with capital consumption adjustment.....do....	22.7	22.8	22.2	24.3	24.4	24.7	
Corp. profits with inventory valuation and capital consumption adjustments, total.....do....	148.2	132.6	163.4	165.2	176.6	168.7	
Profits before tax, total.....do....	178.3	172.1	205.5	205.4	224.9	229.8	
Profits after tax, total.....do....	104.4	102.1	120.5	119.2	130.5	139.7	
Inventory valuation adjustment.....do....	-14.8	-23.5	-24.9	-20.9	-28.4	-40.4	
Capital consumption adjustment.....do....	-15.3	-16.1	-17.2	-19.3	-19.9	-20.7	
Net interest.....do....	99.0	101.7	104.6	107.4	111.4	115.2	
PERSONAL INCOME, quarterly total.....do....	1,593.0	1,628.9	1,682.4	1,731.7	1,789.0	1,836.0	
Less: Personal tax and nontax payments.....do....	233.3	237.3	249.1	263.2	275.1	272.8	
Equals: Disposable personal income.....do....	1,359.6	1,391.6	1,433.3	1,468.4	1,513.9	1,563.3	
Less: Personal outlays.....do....	1,285.9	1,309.2	1,357.0	1,392.5	1,440.9	1,480.2	
Equals: Personal saving.....do....	73.7	82.4	76.3	76.0	73.0	83.1	
		1978		1979			
		Apr.	May	Feb.	Mar.	Apr.	May
PERSONAL INCOME, BY SOURCE:							
SEASONALLY ADJUSTED, AT ANNUAL RATES:							
Total personal income.....bil. \$..	1,669.4	1,682.1	1,833.3	1,855.8	r1,863.3	1,876.5	
Wage and salary disbursements, total.....do....	1,083.9	1,088.4	1,183.7	r1,199.2	r1,201.1	1,208.2	
Commodity-producing industries, total.....do....	383.9	386.2	426.5	433.7	r431.8	436.5	
Manufacturing.....do....	294.3	295.9	327.3	330.8	r329.1	330.8	
Distributive industries.....do....	264.9	266.1	290.0	r293.5	r294.0	295.5	
Service industries.....do....	222.2	222.0	r242.2	r246.2	r248.5	248.5	
Government and government enterprises.....do....	213.0	213.9	225.0	225.9	226.8	227.7	
Other labor income.....do....	102.7	104.0	115.9	117.3	118.6	120.0	
Proprietors' income <u>1/</u>							
Farm.....do....	22.0	24.8	30.5	30.3	r30.4	30.6	
Rental income of persons with capital consumption adjustment.....do....	22.3	22.1	24.7	24.8	r23.8	24.8	
Dividends.....do....	47.4	48.0	54.2	54.2	54.4	55.1	
Personal interest income.....do....	154.8	156.5	172.5	r175.2	r177.4	178.7	
Transfer payments.....do....	219.7	221.3	238.0	r241.1	r243.5	245.3	
Less: personal contrib. for social insurance.....do....	68.9	69.0	78.7	79.6	r79.6	80.0	
Total nonfarm income.....do....	1,631.9	1,641.8	1,785.7	1,808.2	r1,815.4	1,828.2	
INDUSTRIAL PRODUCTION (F.R. INDEX OF QUANTITY OUTPUT):							
SEASONALLY ADJ., TOTAL INDEX (INCL. UTIL.).....1967=100..							
BY MARKET GROUPINGS:	143.2	143.9	r151.2	r152.3	p150.2	e152.1	
PRODUCTS, TOTAL.....do....	143.0	143.1	r150.2	r151.0	p148.5	e150.5	
Final products.....do....	140.5	140.5	r146.5	r147.7	p145.1	e147.4	
Consumer goods.....do....	147.5	147.0	r151.0	r152.4	p148.6	e151.3	
Durable consumer goods.....do....	161.8	160.2	161.3	r163.5	p151.7	e161.0	
Automotive products.....do....	184.3	180.0	r179.0	r186.6	p161.3	e183.5	
Autos and utility vehicles.....do....	182.7	175.6	170.7	180.1	p147.4	e177.6	
Autos.....do....	159.1	151.6	144.9	153.7	p128.6	e153.1	
Auto parts and allied goods.....do....	188.2	191.5	r200.2	r202.8	p197.0	e198.0	
Home goods.....do....	149.2	148.9	151.3	r150.5	p146.2	e148.4	
Nondurable consumer goods.....do....	141.8	141.7	r146.8	r147.9	p147.4	e147.5	
Clothing.....do....	124.9	125.4	
Consumer staples.....do....	146.6	146.2	r151.3	r152.5	p152.3	e152.2	
Equipment.....do....	130.8	131.6	r140.2	r141.4	p140.4	e142.0	
Business.....do....	159.3	160.2	r170.6	r172.1	p170.5	e172.7	
Industrial equipment.....do....	147.8	149.7	r156.0	r156.3	p155.3	e156.4	
Commercial, transit, and farm equip.....do....	172.6	172.3	187.4	r190.4	p188.1	e191.6	
Defense and space equipment.....do....	82.9	83.6	89.1	r89.5	p89.8	e90.5	
Intermediate products.....do....	152.1	152.6	r163.7	162.8	p161.8	e162.7	
Construction supplies.....do....	148.5	150.4	r161.3	r160.2	p158.3	e159.2	
Business supplies.....do....	155.6	155.0	r166.1	165.4	p165.4	
MATERIALS, TOTAL.....do....	143.7	145.1	r152.9	r154.2	p152.9	e154.6	
Durable goods materials.....do....	142.7	143.9	r154.4	r155.7	p153.4	e156.0	
Nondurable goods materials.....do....	162.0	163.5	r169.2	170.5	p170.9	e172.5	
Energy materials.....do....	123.9	125.2	r128.9	r130.4	p129.1	e128.8	
BY INDUSTRY GROUPINGS:							
MINING AND UTILITIES.....do....	140.9	140.9	r144.0	r144.8	p144.6	e144.9	
MINING.....do....	127.2	126.7	121.8	p124.1	e124.6	
Metal mining.....do....	122.3	120.0	r124.3	r126.3	p128.2	
Coal.....do....	129.5	131.7	104.0	124.0	p129.3	e133.9	
Oil and gas extraction.....do....	127.3	126.3	121.7	r121.5	p120.6	e120.4	

r/ Revised. p/ Preliminary. e/ Estimated. 1/ With inventory valuation and capital consumption adjustment.

ITEM	1978		1979			
	Apr.	May	Feb.	Mar.	Apr. p/	May e/
GENERAL BUSINESS INDICATORS--Con.						
INDUSTRIAL PRODUCTION (F.R. INDEX OF QUANTITY OUTPUT)--Con.						
SEASONALLY ADJ., TOTAL INDEX (INCL. UTIL.)--Con.						
BY INDUSTRY GROUPINGS--Con.						
MINING AND UTILITIES--Con.						
UTILITIES.....1967=100..	156.0	157.0	r169.0	r168.2	167.5	167.8
Electric.....do....	175.0	177.1	192.2
MANUFACTURING, TOTAL.....do....						
Nondurable manufactures.....do....	143.5	144.3	r152.2	r153.1	150.9	153.0
Foods.....do....	153.2	154.0	r160.7	r161.5	160.9	161.6
Tobacco products.....do....	143.1	142.8	146.5	r147.7	146.3
Textile mill products.....do....	121.0	120.2	118.8	121.8
Apparel products.....do....	138.1	138.5	r140.5	r142.6	141.3
Paper and products.....do....	126.1	125.8
Printing and publishing.....do....	145.7	146.6	148.0	r149.9	149.6	151.9
Chemicals and products.....do....	128.6	128.2	r137.6	r137.0	136.9	137.0
Petroleum products.....do....	185.5	188.1	201.4	r200.9	202.1
Rubber and plastics products.....do....	141.7	143.4	r144.5	r144.3	145.7	144.1
Leather and products.....do....	249.1	252.7	r270.1	r272.1	269.0
Durable manufactures.....do....	76.0	75.7	73.3	73.6	71.0
Ordnance, pvt. and govt.....do....	136.9	137.6	r146.2	r147.3	144.0	147.1
Lumber and products.....do....	73.0	74.3	73.5	73.4	74.2	74.5
Furniture and fixtures.....do....	136.9	136.5	r140.6	r140.7	138.1
Clay, glass, and stone products.....do....	148.9	152.8	163.6	r163.8	161.8
Primary metals.....do....	156.7	157.9	166.9	r166.1	163.9
Fabricated metal products.....do....	114.3	115.5	r121.3	121.7	119.2	121.6
Nonelectrical machinery.....do....	139.5	140.4	152.2	r151.3	150.5	151.0
Electrical machinery.....do....	152.2	152.9	164.6	r166.7	165.2	166.6
Transportation equipment.....do....	152.3	152.9	r165.3	166.1	163.5	165.1
Instruments.....do....	130.5	130.1	136.3	r140.1	128.9	139.9
	170.5	169.8	181.0	r182.7	182.1	182.8

r/ Revised. p/ Preliminary. e/ Estimated.

☆ U.S. GOVERNMENT PRINTING OFFICE: 1979--281-051/49

UNITED STATES
GOVERNMENT PRINTING OFFICE
DIVISION OF PUBLIC DOCUMENTS
WASHINGTON, D.C. 20402

OFFICIAL BUSINESS

First-Class Mail

POSTAGE AND FEES PAID
U.S. DEPARTMENT OF COMMERCE
COM-209



WEEKLY SUPPLEMENT
SURVEY OF CURRENT BUSINESS