



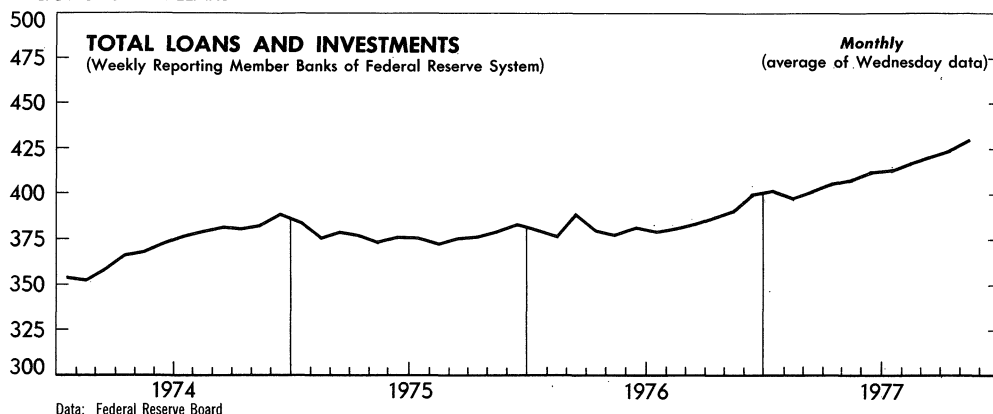
# WEEKLY BUSINESS STATISTICS



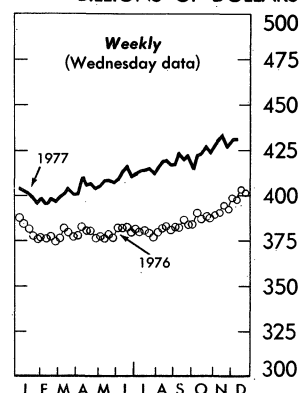
Annual Subscription: domestic, \$15.00; foreign, \$18.75 (no single copies sold). Order from Superintendent of Documents, U.S. Government Printing Office, Washington, D.C. 20402.

## U.S. DEPARTMENT OF COMMERCE/BUREAU OF ECONOMIC ANALYSIS

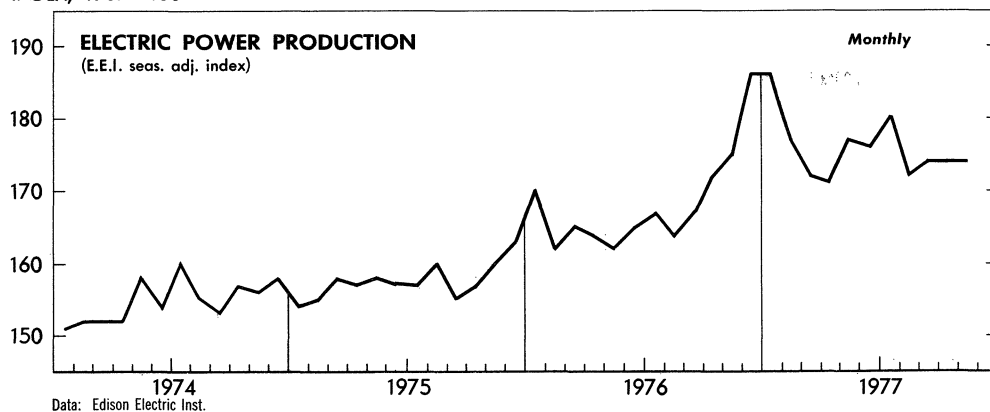
BILLIONS OF DOLLARS



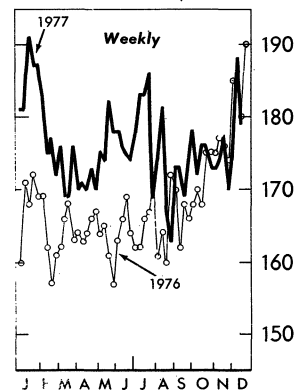
BILLIONS OF DOLLARS



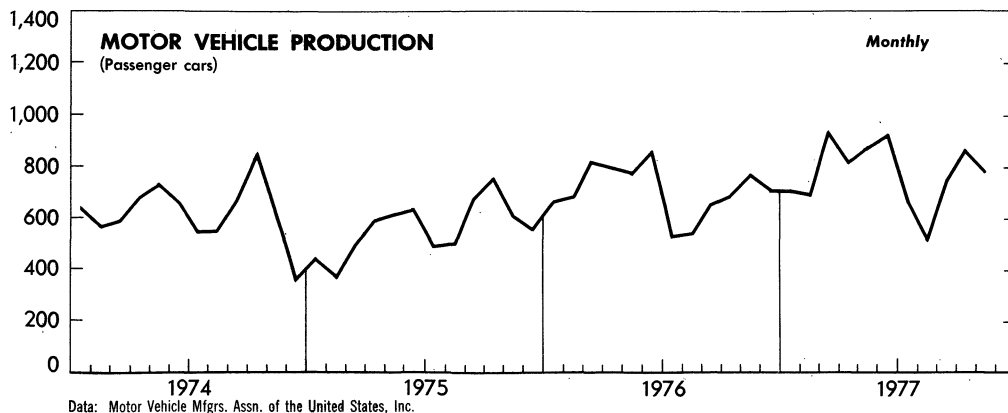
INDEX, 1967=100



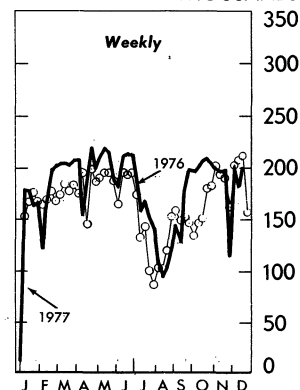
INDEX, 1967=100



THOUSANDS



THOUSANDS



WEEKLY BUSINESS STATISTICS updates selected data that are published monthly in the SURVEY OF CURRENT BUSINESS.

WEEKLY BUSINESS STATISTICS<sup>1</sup>

ITEM	1976		1977			
	Dec. 18	Dec. 25	Dec. 3	Dec. 10	Dec. 17	Dec. 24
WHOLESALE PRICES, 22 COMMODITIES <sup>2/</sup> .....1967=100..	199.6	200.8	209.4	211.6	213.1	212.8
9 Foodstuffs.....do....	196.8	196.3	211.5	213.9	215.1	215.2
13 Raw industrials.....do....	201.5	203.8	207.9	209.8	211.6	211.1
ALL RETAIL STORES, SALES.....mil. \$..	15,485	15,714	15,506	15,841	16,983	.....
Nondurable goods stores.....do....	10,955	11,315	10,607	11,203	11,121	.....
INITIAL UNEMPLOYMENT CLAIMS, State programs.....thous..	435	466	431	448	413	.....
INSURED UNEMPLOYMENT, all programs.....do....	3,686	3,828	3,029	3,121	.....	.....
State programs (50 States, D.C., and Puerto Rico).....do....	2,915	3,062	2,442	2,531	.....	.....
FAILURES, INDUST. AND COMMERCIAL (Dun & Bradstreet).....number..	164	103	116	100	136	.....
FINANCE:						
Currency in circulation <sup>3/</sup> .....mil. \$..	93,660	93,983	101,492	101,730	102,509	e102,941
Federal Reserve bank credit outstanding, total <sup>3/</sup> .....do....	104,725	108,578	111,475	113,098	112,612	116,639
Member bank reserve balances <sup>3/</sup> .....do....	35,456	35,154	35,952	35,716	36,292	36,637
Excess reserves, estimated <sup>3/</sup> .....do....	467	71	457	35	310	208
Assets and liabilities of large commercial banks: <sup>4/</sup>						
Demand deposits, adjusted.....do....	113,738	111,057	113,231	115,019	.....	.....
Savings deposits.....do....	88,378	88,699	92,276	92,241	.....	.....
Loans and investments, gross adjusted, total.....do....	403,298	401,779	431,492	431,536	.....	.....
U.S. Government obligations.....do....	49,777	49,432	45,659	45,942	.....	.....
Commercial and industrial loans (gross).....do....	116,425	116,544	123,573	123,850	.....	.....
Real estate loans (gross).....do....	63,505	63,501	73,444	73,166	.....	.....
Bond yields, domestic corporate (Moody's) <sup>3/</sup> .....percent..	8.47	8.44	8.47	8.50	8.53	8.57
Stock prices, 500 stocks (Stand. & Poor's) <sup>4/</sup> .....1941-43=10..	105.14	104.71	94.83	92.78	94.03	93.05
Industrial, 400 stocks.....do....	116.75	116.39	104.19	101.85	103.42	102.39
PRODUCTION:						
Bituminous coal.....thous. sh. tons..	13,935	10,500	14,750	8,980	5,080	.....
Electric power, by utilities.....mil. kw.-hr..	41,885	40,978	40,825	43,367	42,338	.....
Motor vehicles (passenger cars).....number..	212,285	156,911	202,346	181,729	200,014	.....
Petroleum (crude) and condensate <sup>3/</sup> .....thous. bbl..	8,090	8,090	8,468	8,468	8,468	.....
Steel, raw.....thous. sh. bbl..	2,144	2,000	2,287	2,277	2,262	.....
Rate of capability utilization <sup>5/</sup> .....percent..	69.9	65.2	75.4	75.1	74.6	.....
RAIL FREIGHT, REVENUE TON-MILES.....bil..	15.5	12.0	16.0	14.1	13.8	.....

<sup>1/</sup> Data do not always cover calendar weeks. <sup>2/</sup> Tuesday price. <sup>3/</sup> Daily average. <sup>4/</sup> Wednesday data. <sup>5/</sup> Capability for a full order book based on current availability of raw materials, fuels, supplies, and industry facilities. <sup>e/</sup> Estimated.

## MONTHLY BUSINESS STATISTICS

ITEM	1976			1977		
	II	III	IV	I	II	III <sup>r/</sup>
GENERAL BUSINESS INDICATORS						
NATIONAL INCOME AND PRODUCT:						
SEASONALLY ADJUSTED QUARTERLY TOTALS AT ANNUAL RATES:						
GROSS NATIONAL PRODUCT, TOTAL.....bil. \$..	1,691.9	1,727.3	1,755.4	1,810.8	1,869.9	1,915.9
Personal consumption expenditures, total.....do....	1,078.5	1,102.2	1,139.0	1,172.4	1,194.0	1,218.9
Durable goods, total.....do....	156.7	159.3	166.3	177.0	178.6	177.6
Motor vehicles and parts.....do....	71.0	72.1	75.7	85.3	84.5	81.2
Furniture and household equipment.....do....	63.0	63.9	66.5	67.4	69.3	70.9
Nondurable goods, total.....do....	437.1	444.7	458.8	466.6	474.4	481.8
Clothing and shoes.....do....	74.3	76.9	79.9	79.3	80.4	83.3
Food.....do....	223.9	227.0	232.0	237.9	244.8	248.3
Gasoline and oil.....do....	40.3	41.2	43.5	44.1	44.3	44.2
Services, total.....do....	484.6	498.2	513.9	528.8	541.1	559.5
Household operation.....do....	70.4	73.1	78.8	80.7	79.2	85.2
Housing.....do....	166.2	170.4	173.7	177.6	181.9	186.7
Transportation.....do....	36.3	37.6	38.7	39.5	40.5	42.3
Gross private domestic investment, total.....do....	244.4	254.3	243.4	271.8	294.9	303.6
Fixed investment.....do....	226.1	232.8	244.3	258.0	273.2	280.0
Nonresidential.....do....	159.8	164.9	167.6	177.0	182.4	187.5
Residential.....do....	66.3	67.8	76.7	81.0	90.8	92.5
Change in business inventories.....do....	18.3	21.5	-9	13.8	21.7	23.6
Net exports of goods and services.....do....	10.2	7.9	3.0	-8.2	-9.7	-7.5
Exports.....do....	160.6	168.4	168.5	170.4	178.1	179.9
Imports.....do....	150.4	160.6	165.6	178.6	187.7	187.4
Gov't. purchase of goods and services, total.....do....	358.9	363.0	370.0	374.9	390.6	400.9
Federal.....do....	128.5	130.2	134.2	136.3	143.6	148.1
National defense.....do....	86.0	86.4	88.4	89.7	93.4	95.6
State and local.....do....	230.4	232.7	235.8	238.5	247.0	252.9

<sup>r/</sup> Revised.

r/ Revised. 1/ Data for November 1977 are advance estimates.

## MONTHLY BUSINESS STATISTICS—Continued

ITEM	1976		1977			
	Oct.	Nov.	Aug.	Sept.	Oct.	Nov.
COMMODITY PRICES--Con.						
CONSUMER PRICE INDEXES--Con.						
Housing.....1967=100..	180.1	180.7	191.4	192.7	193.6	194.6
Shelter.....do....	182.0	182.1	193.2	194.7	195.6	196.9
Rent.....do....	146.9	147.5	154.4	155.3	156.1	157.0
Homeownership.....do....	194.8	194.8	207.4	209.1	210.0	211.5
Fuel and utilities.....do....	186.5	188.2	204.5	205.5	206.8	207.4
Fuel oil and coal.....do....	253.1	258.0	284.1	285.1	287.2	289.9
Gas and electricity.....do....	193.9	195.5	217.4	218.0	219.3	219.5
Household furnishings and operations.....do....	170.9	171.7	178.1	178.9	179.5	180.1
Apparel and upkeep.....do....	150.9	151.9	154.8	156.2	157.2	158.5
Transportation.....do....	170.9	171.4	178.8	178.4	178.6	178.7
Private.....do....	170.2	170.6	178.2	177.8	177.9	178.0
New cars.....do....	139.1	139.7	141.6	141.1	145.7	148.2
Used cars.....do....	179.9	179.0	186.4	182.5	178.0	175.0
Public.....do....	177.4	177.6	183.5	184.1	184.4	184.7
Health and recreation.....do....	166.1	167.3	174.7	176.1	177.1	177.9
Medical care.....do....	188.9	191.3	204.9	206.3	207.2	208.1
Personal care.....do....	163.9	164.8	172.1	172.8	173.9	175.5
Reading and recreation.....do....	153.5	154.1	158.1	159.8	160.6	160.9
PURCHASING POWER OF THE DOLLAR AS MEASURED BY--						
Consumer prices.....1967=\$1.00..	\$0.577	\$0.575	\$0.546	\$0.543	\$0.542	\$0.539
TRANSPORTATION EQUIPMENT						
Passenger cars (new):						
Retail sales, total, not seasonally adj.....thous..	868	840	931	r829	r1.014	p881
Domestics.....do....	731	721	727	657	870	738
Imports.....do....	138	119	204	172	r144	p144
Total, seas. adjusted at annual rate.....do....	9.6	9.8	11.5	10.5	r11.0	p10.5
Domestics.....do....	7.8	8.1	9.4	8.6	9.1	8.4
Imports.....do....	1.8	1.7	2.1	1.9	1.8	p2.1

r/ Revised. p/ Preliminary.

44,062

UNITED STATES  
GOVERNMENT PRINTING OFFICE  
DIVISION OF PUBLIC DOCUMENTS  
WASHINGTON, D.C. 20402

OFFICIAL BUSINESS

First-Class Mail

United States  
Government  
Printing Office

SUPERINTENDENT  
OF DOCUMENTS  
Washington, D.C. 20402

OFFICIAL BUSINESS  
Penalty for private use, \$300

Postage and Fees Paid  
U.S. Government Printing Office



WEEKLY BUSINESS STATISTICS