



WEEKLY BUSINESS STATISTICS

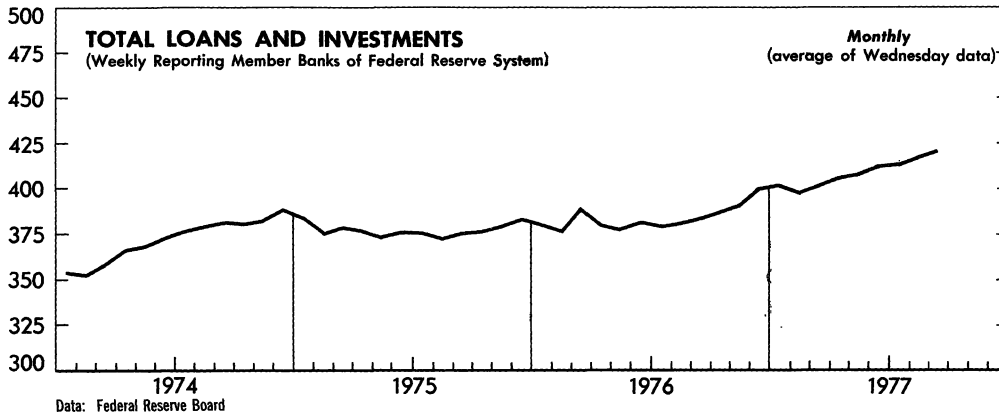


November 11, 1977

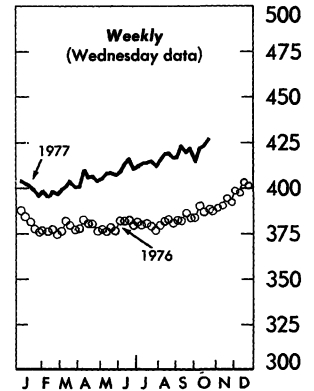
Annual Subscription: domestic, \$15.00; foreign, \$18.75 (no single copies sold). Order from Superintendent of Documents, U.S. Government Printing Office, Washington, D.C. 20402.

U.S. DEPARTMENT OF COMMERCE/BUREAU OF ECONOMIC ANALYSIS

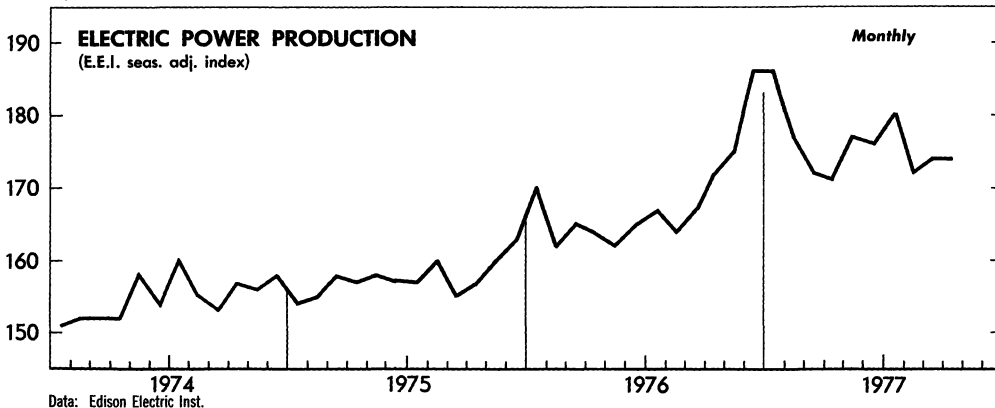
BILLIONS OF DOLLARS



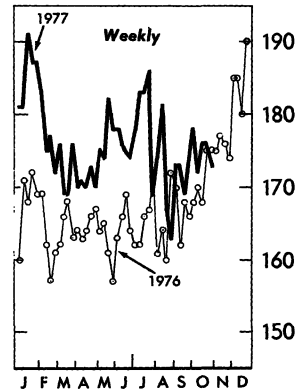
BILLIONS OF DOLLARS



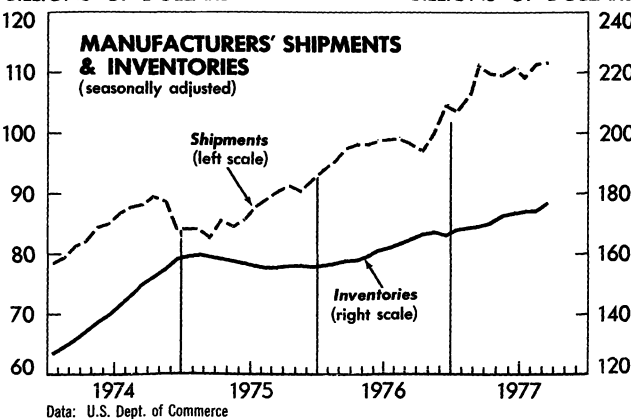
INDEX, 1967=100



INDEX, 1967=100

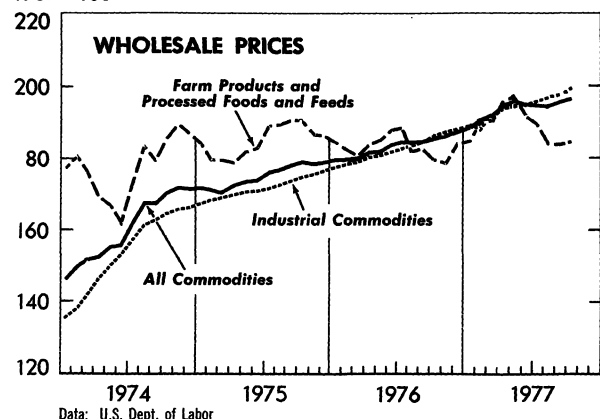


BILLIONS OF DOLLARS



BILLIONS OF DOLLARS

1967=100



WEEKLY BUSINESS STATISTICS updates selected data that are published monthly in the SURVEY OF CURRENT BUSINESS.

WEEKLY BUSINESS STATISTICS¹

ITEM	1976		1977			
	Oct. 30	Nov. 6	Oct. 15	Oct. 22	Oct. 29	Nov. 5
WHOLESALE PRICES, 22 COMMODITIES <u>2/</u>1967=100..	194.3	195.2	205.2	203.2	201.9	203.1
9 Foodstuffs.....do....	188.5	189.9	202.4	198.4	198.8	204.7
13 Raw industrials.....do....	198.3	198.9	207.0	206.5	203.2	201.9
ALL RETAIL STORES, SALES.....mil. \$..	13,132	12,564	13,947	13,955	14,077
Nondurable goods stores.....do....	8,586	8,682	9,069	8,990	8,952
INITIAL UNEMPLOYMENT CLAIMS, State programs.....thous..	371	388	287	322	309
INSURED UNEMPLOYMENT, all programs.....do....	3,255	3,246	2,685	2,657
State programs (50 States, D.C., and Puerto Rico).....do....	2,515	2,513	2,096	2,079
FAILURES, INDUST. AND COMMERCIAL (Dun & Bradstreet)...number..	171	241	147	121	134	124
FINANCE:						
Currency in circulation <u>3/</u>mil. \$..	90,218	90,558	99,047	99,194	98,856	e98,976
Federal Reserve bank credit outstanding, total <u>3/</u>do....	107,066	108,480	110,918	112,352	112,730	113,036
Member bank reserve balances <u>3/</u>do....	34,184	34,783	34,884	36,413	35,448	36,017
Excess reserves, estimated <u>3/</u>do....	111	461	234	135	146	288
Assets and liabilities of large commercial banks: <u>4/</u>						
Demand deposits, adjusted.....do....	106,619	106,173	112,776	111,362
Savings deposits.....do....	84,303	84,907	93,609	93,356
Loans and investments, gross adjusted, total.....do....	387,647	389,508	423,738	426,816
U.S. Government obligations.....do....	44,231	41,458	44,405	45,566
Commercial and industrial loans (gross).....do....	113,679	114,619	121,404	121,840
Real estate loans (gross).....do....	62,837	62,869	71,592	71,857
Bond yields, domestic corporate (Moody's) <u>3/</u>percent..	8.63	8.61	8.41	8.44	8.46
Stock prices, 500 stocks (Stand. & Poor's) <u>4/</u> ...1941-43=10..	101.76	101.92	94.04	92.38	92.10	90.71
Industrial, 400 stocks.....do....	113.90	114.02	103.40	101.61	101.59	99.88
PRODUCTION:						
Bituminous coal.....thous. sh. tons..	13,193	13,710	15,450	15,420	14,690
Electric power, by utilities.....mil. kw.-hr..	38,481	38,876	38,389	38,306	37,759
Motor vehicles (passenger cars).....do....	183,037	202,510	206,598	210,167	204,458	199,805
Petroleum (crude) and condensate <u>3/</u>thous. bbl..	8,041	8,054	8,611	8,611	8,611
Steel, raw.....thous. sh. tons..	2,322	2,350	2,362	2,348	2,351	2,349
Rate of capability utilization <u>5/</u>percent..	75.7	76.6	77.9	77.4	77.5	77.4
RAIL FREIGHT, REVENUE TON-MILES.....bil.	16.2	16.4	16.5	16.8	16.7

^{1/} Data do not always cover calendar weeks. ^{2/} Tuesday price. ^{3/} Daily average. ^{4/} Wednesday data. ^{5/} Capability for a full order book based on current availability of raw materials, fuels, supplies, and industry facilities. ^{e/} Estimated.

MONTHLY BUSINESS STATISTICS

ITEM	1976		1977			
	Aug.	Sept.	June	July	Aug.	Sept. p/
GENERAL BUSINESS INDICATORS						
MANUFACTURERS' SHIPMENTS:						
NOT SEASONALLY ADJUSTED, TOTAL.....mil. \$..	97,490	103,245	116,636	102,201	r109,894	116,422
Durable goods industries, total.....do....	49,810	53,023	62,349	52,379	r55,768	61,227
Stone, clay, and glass products.....do....	2,749	2,768	3,249	2,856	r3,281	3,193
Primary metals.....do....	7,577	7,844	9,070	7,483	r7,991	8,522
Fabricated metal products.....do....	6,712	6,868	7,924	6,600	r7,438	7,917
Machinery, except electrical.....do....	8,738	9,644	10,686	9,137	r9,716	10,573
Electrical machinery.....do....	6,007	6,515	7,166	6,236	r6,780	7,386
Transportation equipment.....do....	10,114	11,106	15,155	12,175	r11,278	14,129
Instruments and related products.....do....	2,120	2,247	2,452	2,100	r2,313	2,459
Nondurable goods industries, total <u>1/</u>do....	48,129	50,221	54,287	49,822	r54,126	55,195
Food and kindred products.....do....	14,540	15,466	15,817	14,706	r15,774	16,048
Tobacco products.....do....	652	677	738	689	749	710
Textile mill products.....do....	3,060	3,302	3,725	2,988	r3,640	3,822
Paper and allied products.....do....	4,312	4,443	4,822	4,220	r4,675	4,556
Chemicals and allied products.....do....	8,222	8,835	9,807	8,552	r9,319	9,766
Petroleum and coal products.....do....	7,103	7,107	8,131	8,122	r8,122	8,106
Rubber and plastics products.....do....	2,723	2,730	3,294	2,812	r3,109	3,222
SEASONALLY ADJUSTED, TOTAL.....do....	99,078	98,387	110,680	109,208	r111,376	111,585
By industry group:						
Durable goods industries, total <u>1/</u>do....	51,648	50,060	57,570	56,820	r58,087	58,509
Stone, clay, and glass products.....do....	2,579	2,568	3,010	2,906	r3,080	2,961
Primary metals.....do....	7,856	7,746	8,428	8,174	r8,281	8,420
Fabricated metal products.....do....	6,592	6,485	7,461	6,972	r7,303	7,480
Machinery, except electrical.....do....	9,420	9,378	9,716	10,037	r10,465	10,287
Electrical machinery.....do....	6,133	6,101	6,753	6,900	r6,912	6,933
Transportation equipment.....do....	11,513	10,117	13,862	13,548	r13,193	13,630
Instruments and related products.....do....	2,144	2,086	2,324	2,280	r2,339	2,283

r/ Revised. p/ Preliminary. 1/ Includes data for "other industries" not shown.

43956

ITEM	1976		1977			
	Aug.	Sept.	June	July	Aug.	Sept. p/
GENERAL BUSINESS INDICATORS--Con.						
MANUFACTURERS' SHIPMENTS (SEAS. ADJ.)--Con.						
By industry group--Con.						
Nondurable goods industries, total <u>1/</u>mil. \$..	47,430	48,328	53,110	52,388	r53,289	53,076
Food and kindred products.....do....	14,552	14,762	15,822	15,513	r15,768	15,321
Tobacco products.....do....	616	682	695	676	708	715
Textile mill products.....do....	2,971	3,088	3,464	3,423	r3,537	3,578
Paper and allied products.....do....	4,195	4,302	4,586	4,433	r4,548	4,409
Chemicals and allied products.....do....	8,134	8,611	9,554	9,064	r9,206	9,497
Petroleum and coal products.....do....	7,061	7,075	7,921	8,080	r8,073	8,058
Rubber and plastics products.....do....	2,686	2,649	3,120	3,010	r3,070	3,123
INVENTORIES, END OF MONTH:						
Book value (unadjusted), total.....do....	161,787	162,900	173,022	172,902	r173,730	174,401
Durable goods industries, total.....do....	102,692	103,249	110,229	110,110	r110,656	110,785
Nondurable goods industries, total.....do....	59,095	59,652	62,793	62,792	r63,074	63,616
Book value (seasonally adjusted), total.....do....	163,184	164,966	173,818	174,571	r175,104	176,397
By industry group:						
Durable goods industries, total <u>1/</u>do....	103,282	104,117	110,421	110,978	r111,452	111,832
Stone, clay, and glass products.....do....	4,002	3,998	4,251	4,321	r4,314	4,365
Primary metals.....do....	16,485	16,660	17,645	17,819	r17,759	17,647
Fabricated metal products.....do....	12,547	12,827	13,472	13,682	r13,763	13,973
Machinery, except electrical.....do....	23,591	23,678	24,871	25,018	r25,148	25,250
Electrical machinery.....do....	13,708	13,811	15,343	15,250	r15,379	15,503
Transportation equipment.....do....	19,515	19,621	20,370	20,377	r20,555	20,430
Instruments and related products.....do....	4,438	4,465	4,735	4,839	r4,878	4,925
Nondurable goods industries, total <u>1/</u>do....	59,902	60,850	63,397	63,593	r63,652	64,565
Food and kindred products.....do....	15,617	15,830	16,360	16,127	r16,120	16,579
Tobacco products.....do....	3,631	3,704	3,596	3,647	r3,561	3,687
Textile mill products.....do....	5,184	5,201	5,473	5,464	r5,461	5,411
Paper and allied products.....do....	5,128	5,136	5,568	5,625	r5,649	5,635
Chemicals and allied products.....do....	12,825	12,977	13,306	13,549	r13,746	13,746
Petroleum and coal products.....do....	4,833	5,043	5,546	5,654	r5,686	5,847
Rubber and plastics products.....do....	3,594	3,708	4,104	4,112	r4,137	4,165
NEW ORDERS, NET (NOT SEASONALLY ADJUSTED), TOTAL.....do....	97,174	102,455	117,596	103,311	r111,036	116,508
Durable goods industries, total.....do....	49,436	52,307	63,372	53,317	r57,107	61,360
Nondurable goods industries, total.....do....	47,738	50,148	54,224	49,994	r53,929	55,148
NEW ORDERS, NET (SEASONALLY ADJUSTED), TOTAL.....do....	97,554	98,476	111,524	108,598	r111,494	111,979
By industry group:						
Durable goods industries, total <u>1/</u>do....	50,380	50,068	58,378	56,031	r58,270	58,774
Primary metals.....do....	7,340	7,556	7,959	8,311	r8,576	8,618
Fabricated metal products.....do....	6,586	6,280	7,236	6,798	r7,346	7,252
Machinery, except electrical.....do....	9,082	9,283	10,394	10,130	r10,897	10,806
Electrical machinery.....do....	6,088	5,963	6,866	6,901	r6,973	7,036
Transportation equipment.....do....	11,203	10,751	14,725	12,667	r12,417	13,041
Nondurable goods industries, total.....do....	47,173	48,409	53,146	52,567	r53,224	53,205
Industries with unfilled orders.....do....	10,142	10,738	11,787	11,756	r11,922	11,996
Industries without unfilled orders.....do....	37,031	37,671	41,359	40,811	r41,302	41,209
UNFILED ORDERS, END OF MONTH (UNADJ.), TOTAL.....do....	172,229	171,440	181,521	182,632	r183,774	183,855
Durable goods industries, total.....do....	164,567	163,851	173,045	173,984	r175,322	175,452
Nondurable goods industries with unfilled orders.....do....	7,661	7,588	8,476	8,648	r8,452	8,403
UNFILED ORDERS, END OF MONTH (SEAS. ADJ.), TOTAL.....do....	170,414	170,503	183,150	182,541	r182,646	183,046
By industry group:						
Durable goods industries, total <u>1/</u>do....	162,787	162,795	174,859	174,072	r174,245	174,516
Primary metals.....do....	16,330	16,140	17,205	17,342	r17,634	17,833
Fabricated metal products.....do....	23,086	22,881	23,353	23,179	r23,222	22,994
Machinery, except electrical.....do....	43,981	43,886	44,894	44,988	r45,420	45,940
Electrical machinery.....do....	22,385	22,246	24,497	24,500	r24,556	24,660
Transportation equipment.....do....	49,056	49,690	56,234	55,351	r54,575	53,987
Nondurable goods industries with unfilled orders.....do....	7,627	7,708	8,291	8,469	r8,401	8,530
1976						
1977						
COMMODITY PRICES						
WHOLESALE PRICES INDEXES:						
ALL COMMODITIES.....1967=100..	184.8	185.3	194.9	194.6	195.3	196.3
Farm products.....do....	191.9	186.7	190.5	181.2	181.9	182.4
Food and feeds, processed.....do....	177.2	174.9	187.8	185.1	184.2	184.5
Industrial commodities.....do....	184.8	186.3	195.8	196.9	197.8	199.1
Chemicals and allied products.....do....	188.6	188.6	193.5	193.5	193.2	193.5
Fuels and related products, and power.....do....	271.2	277.1	306.6	309.5	309.7	310.6
Furniture and household durables.....do....	146.7	147.2	151.2	152.4	152.5	153.0
Hides, skins and leather products.....do....	173.6	170.9	180.3	180.5	179.9	179.6
Lumber and wood products.....do....	212.8	213.6	235.5	242.7	252.4	247.3
Machinery and equipment.....do....	172.8	174.0	181.9	182.8	183.9	185.7
Metals and metal products.....do....	200.1	200.0	210.7	211.7	212.6	211.8
Nonmetallic mineral products.....do....	188.6	189.4	201.5	202.4	204.2	205.3
Pulp, paper, and allied products.....do....	181.6	181.6	187.7	187.8	188.5	188.8
Rubber and plastics products.....do....	163.9	164.6	168.9	169.1	169.4	170.0
Textile products.....do....	149.0	149.3	154.4	154.4	155.1	155.2
Transportation equipment.....Dec. 1968=100..	151.0	156.1	159.5	160.6	161.4	167.9
Motor vehicles and equipment.....1967=100..	153.5	159.0	161.8	163.1	163.8	170.8
PURCHASING POWER OF THE DOLLAR AS MEASURED BY--						
Wholesale prices.....1967=\$1.00..	\$0.541	\$0.540	\$0.513	\$0.514	\$0.512	\$0.509

r/ Revised. p/ Preliminary. 1/ Includes data for "other industries" not shown.

ITEM	1976		1977			
	Aug.	Sept.	June	July	Aug.	Sept.
CONSTRUCTION AND REAL ESTATE						
NEW CONSTRUCTION PUT IN PLACE (UNADJ.), TOTAL.....mil. \$..	13,473	13,700	15,752	r15,839	r16,389	16,431
Private, total.....do....	9,681	9,969	12,115	r12,265	r12,570	12,611
Residential (incl. farm).....do....	5,390	5,574	7,611	r7,717	r7,849	7,801
New housing units.....do....	4,662	4,753	6,037	r6,306	r6,476	6,457
Nonresidential buildings, total <u>1</u> /.....do....	2,346	2,349	2,394	2,497	r2,595	2,639
Industrial.....do....	620	626	602	620	r658	646
Commercial.....do....	1,150	1,150	1,265	1,329	r1,380	1,413
Public, total.....do....	3,792	3,731	3,637	r3,574	r3,819	3,820
NEW CONSTRUCTION PUT IN PLACE (SEASONALLY ADJUSTED AT ANNUAL RATES), TOTAL.....bil. \$..	141.8	145.2	174.4	r172.3	r171.0	173.7
Private, total.....do....	103.6	107.4	135.0	r133.0	r132.8	134.5
Residential (incl. farm).....do....	54.5	57.7	82.2	r79.6	r79.1	80.5
New housing units.....do....	47.1	48.7	66.0	r65.1	r65.2	66.0
Nonresidential buildings, total <u>1</u> /.....do....	26.5	26.5	28.5	29.2	r29.2	29.5
Industrial.....do....	7.2	7.1	7.1	7.2	r7.6	7.4
Commercial.....do....	12.9	12.8	r15.2	r15.6	r15.3	15.7
Public, total.....do....	38.2	37.9	39.4	39.2	r38.2	39.2
CONSTRUCTION COST INDEXES:						
DEPARTMENT OF COMMERCE COMPOSITE.....1972=100..	144.4	144.5	156.2	r157.3	r159.3	162.0
CONSTRUCTION CONTRACTS IN 50 STATES, (F.W. DODGE):						
TOTAL VALUATION.....mil. \$..	8,505	8,112	15,417	11,246	14,231	13,713
Index (seasonally adjusted).....1967=100..	189	203	r307	218	267	279
Building, total.....mil. \$..	6,636	6,634	9,009	8,545	9,933	9,135
By type of building:						
Nonresidential.....do....	2,536	2,875	3,063	2,997	3,785	3, .
Residential.....do....	4,099	3,758	5,945	5,548	6,148	5,2
Non-building construction.....do....	1,869	1,478	6,409	2,702	4,297	4,5,

r/ Revised. 1/ Includes addition and alterations.
USCOMM--DC-- 43956

UNITED STATES
GOVERNMENT PRINTING OFFICE
DIVISION OF PUBLIC DOCUMENTS
WASHINGTON, D.C. 20402

OFFICIAL BUSINESS

First-Class Mail

United States
Government
Printing Office

SUPERINTENDENT
OF DOCUMENTS
Washington, D.C. 20402

OFFICIAL BUSINESS
Penalty for private use, \$300

Postage and Fees Paid
U.S. Government Printing Office



WEEKLY BUSINESS STATISTICS