



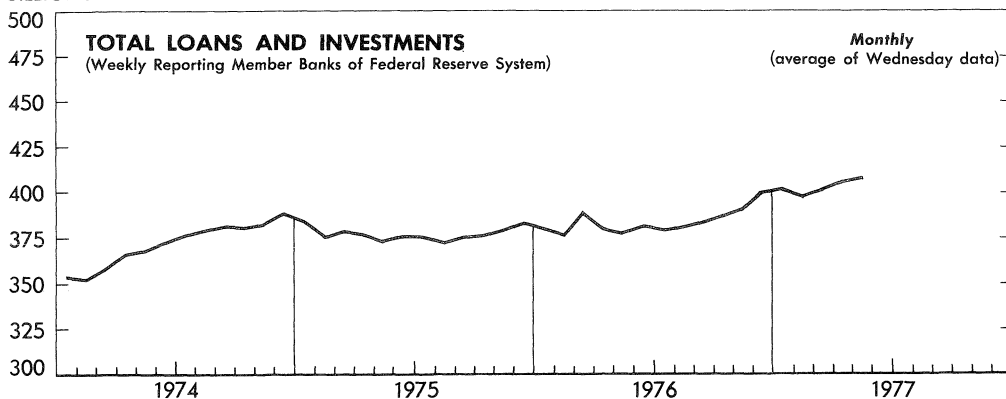
WEEKLY BUSINESS STATISTICS



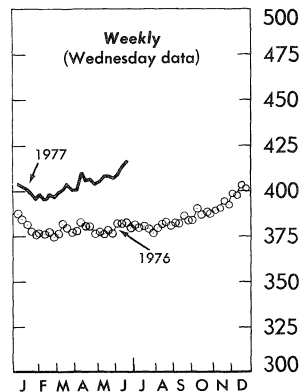
Annual Subscription: domestic, \$15.00; foreign, \$18.75 (no single copies sold). Order from Superintendent of Documents, U.S. Government Printing Office, Washington, D.C. 20402.

U.S. DEPARTMENT OF COMMERCE/BUREAU OF ECONOMIC ANALYSIS

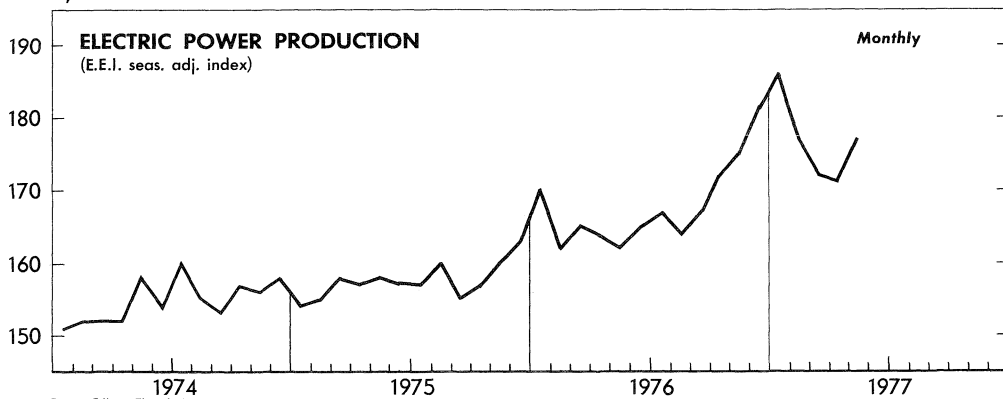
BILLIONS OF DOLLARS



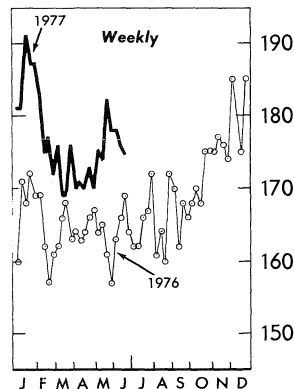
BILLIONS OF DOLLARS



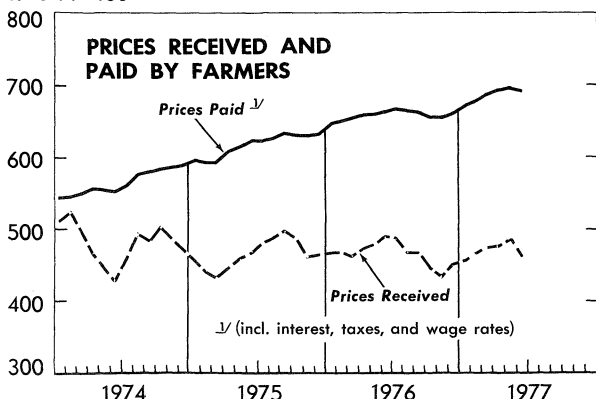
INDEX, 1967=100



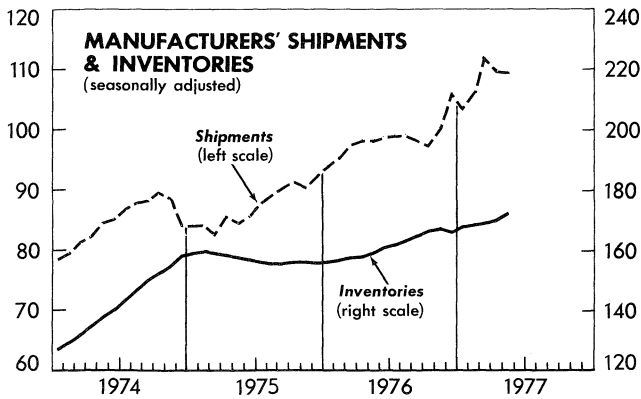
INDEX, 1967=100



1910-14=100



BILLIONS OF DOLLARS



WEEKLY BUSINESS STATISTICS¹

ITEM	1976		1977			
	June 26	July 3	June 11	June 18	June 25	July 2
WHOLESALE PRICES, 22 COMMODITIES ^{2/}1967=100..	209.5	210.9	212.7	208.2	206.4	206.7
9 Foodstuffs.....do....	214.4	215.7	216.3	210.8	207.6	210.6
13 Raw industrials.....do....	206.1	208.9	210.2	206.3	205.4	204.0
ALL RETAIL STORES, SALES.....mil. \$..	12,583	13,349	14,059	14,510	14,307
Nondurable goods stores.....do....	8,091	8,629	9,067	9,328	9,077
INITIAL UNEMPLOYMENT CLAIMS, State program.....thous..	338	399	309	310	321
INSURED UNEMPLOYMENT, all programs.....do....	3,445	3,366	2,958	2,960
State programs (50 States, D.C. and Puerto Rico).....do....	2,633	2,594	2,302	2,304
FAILURES, INDUST. AND COMMERCIAL (Dun & Bradstreet).....number..	220	158	159	166	168
FINANCE:						
Currency in circulation ^{3/}mil. \$..	88,527	88,358	95,915	96,130	95,993	e95,944
Federal Reserve bank credit outstanding, total ^{3/}do....	104,741	108,925	104,445	103,394	111,543	117,223
Member bank reserve balances ^{3/}do....	33,594	34,866	33,744	34,128	34,720	35,073
Excess reserves, estimated ^{3/}do....	-180	525	46	267	104	157
Assets and liabilities of large commercial banks: ^{4/}						
Demand deposits, adjusted.....do....	103,752	118,548	107,719	111,197
Savings deposits.....do....	79,400	79,817	94,475	91,171
Loans and investments, gross adjusted, total.....do....	379,388	381,418	413,484	416,389
U.S. Government obligations.....do....	41,331	42,152	49,789	50,765
Commercial and industrial loans (gross).....do....	112,471	112,909	117,744	118,346
Real estate loans (gross).....do....	61,358	61,432	66,472	66,734
Bond yields, domestic corporate (Moody's) ^{3/}percent..	9.02	9.03	8.42	8.36	8.35	8.32
Stock prices, 500 stocks (Stand. & Poor's) ^{4/} ...1941-43=10..	103.25	104.25	98.20	99.61	100.46	100.11
Industrial, 400 stocks.....do....	116.25	117.38	118.26	109.20	110.73	110.30
PRODUCTION:						
Bituminous coal.....thous. sh. tons..	14,020	8,305	15,055	15,030	14,250
Electric power, by utilities.....mil. kw.-hr..	40,781	41,263	40,533	42,217	43,080
Motor vehicles (passenger cars).....number..	195,301	174,918	213,248	211,938	214,575	203,525
Petroleum (crude) and condensate ^{3/}thous. bbl..	8,228	8,190	8,036	8,036	8,036	8,036
Steel, raw.....thous. sh. tons..	2,715	2,663	2,674	2,605	2,596	2,538
Rate of capability utilization ^{5/}percent..	89.9	87.7	85.5	83.3	83.0	83.5
RAIL FREIGHT, REVENUE TON-MILES.....bil..	16.2	14.8	17.1	17.0	16.5

^{1/} Data do not always cover calendar weeks. ^{2/} Tuesday price. ^{3/} Daily average. ^{4/} Wednesday data. ^{5/} Capability for a full order book based on current availability of raw materials, fuels, supplies, and industry facilities. e/ Estimated.

MONTHLY BUSINESS STATISTICS

ITEM	1976		1977			
	Apr.	May	Feb.	Mar.	Apr.	May
GENERAL BUSINESS INDICATORS						
MANUFACTURERS' SHIPMENTS:						
NOT SEASONALLY ADJUSTED, TOTAL.....mil. \$..	99,537	99,273	106,936	114,339	r111,427	110,726
Durable goods industries, total ^{1/}do....	51,313	51,988	54,908	60,688	58,356	58,722
Stone, clay, and glass products.....do....	2,528	2,564	2,546	2,943	r2,904	2,986
Primary metals.....do....	7,544	8,031	7,774	8,847	8,552	8,666
Fabricated metal products.....do....	6,847	4,018	6,926	7,689	r7,496	7,391
Machinery, except electrical.....do....	9,393	9,291	10,146	10,910	r10,485	10,337
Electrical machinery.....do....	5,827	5,813	6,634	6,813	r6,601	6,493
Transportation equipment.....do....	11,787	11,821	13,049	14,773	13,806	14,291
Instruments and related products.....do....	1,985	2,026	2,193	2,372	r2,271	2,306
Nondurable goods industries, total ^{1/}do....	48,224	47,285	52,028	53,651	r53,071	52,004
Food and kindred products.....do....	14,562	14,527	15,475	15,797	r15,429	14,939
Tobacco products.....do....	655	633	671	714	r696	724
Textile mill products.....do....	3,095	3,177	3,270	3,659	r3,543	3,534
Paper and allied products.....do....	4,166	4,235	4,492	4,647	r4,683	4,631
Chemicals and allied products.....do....	9,283	8,733	9,399	10,218	r10,069	9,675
Petroleum and coal products.....do....	6,645	6,546	7,948	7,597	r7,838	7,968
Rubber and plastics products.....do....	2,842	2,799	3,054	3,215	r3,140	3,081
SEASONALLY ADJUSTED, TOTAL.....do....	98,178	98,191	106,159	111,443	r109,553	109,473
By industry group:						
Durable goods industries, total ^{1/}do....	50,146	50,558	54,729	59,051	56,677	57,094
Stone, clay, and glass products.....do....	2,474	2,454	2,765	2,989	r2,842	2,854
Primary metals.....do....	7,110	7,694	7,590	8,534	7,987	8,427
Fabricated metal products.....do....	6,733	6,877	7,048	7,707	r7,370	7,246
Machinery, except electrical.....do....	9,229	9,263	9,858	10,110	r10,120	10,161
Electrical machinery.....do....	5,833	5,880	6,549	6,643	r6,635	6,578
Transportation equipment.....do....	11,427	11,117	12,750	14,407	13,267	13,452
Instruments and related products.....do....	2,051	2,049	2,258	2,344	r2,323	2,333

^{r/} Revised. ^{1/} Includes data for "other industries" not shown.
84,394

ITEM	1976		1977			
	Apr.	May	Feb.	Mar.	Apr.	May
GENERAL BUSINESS INDICATORS--Con.						
MANUFACTURERS' SHIPMENTS (SEAS. ADJ.)--Con.						
By industry group--Con.						
Nondurable goods industries, total 1/.....mil. \$.	48,033	47,634	51,430	52,392	r52,816	52,379
Food and kindred products.....do....	14,901	14,754	15,277	15,451	r15,778	15,169
Tobacco products.....do....	685	621	703	738	r728	710
Textile mill products.....do....	3,139	3,167	3,346	3,503	r3,593	3,521
Paper and allied products.....do....	4,181	4,257	4,435	4,579	r4,702	4,657
Chemicals and allied products.....do....	8,710	8,344	9,126	9,682	r9,480	9,245
Petroleum and coal products.....do....	6,686	6,630	7,833	7,660	r7,884	8,072
Rubber and plastics products.....do....	2,711	2,779	3,037	3,118	r2,995	3,057
INVENTORIES, END OF MONTH:						
Book value (unadjusted), total.....do....	159,051	159,878	170,396	170,818	r171,886	173,274
Durable goods industries, total.....do....	102,027	102,334	108,439	108,726	r109,218	110,002
Nondurable goods industries, total.....do....	57,023	57,544	61,957	62,092	r62,668	63,272
Book value (seasonally adjusted), total.....do....	158,134	159,488	168,449	169,379	r170,747	172,809
By industry group:						
Durable goods industries, total 1/.....do....	101,033	101,502	107,222	107,685	r108,190	109,226
Stone, clay, and glass products.....do....	3,803	3,869	4,234	4,142	r4,193	4,257
Primary metals.....do....	15,655	15,879	17,276	17,323	r17,332	17,567
Fabricated metal products.....do....	12,675	12,709	13,249	13,265	r13,332	13,408
Machinery, except electrical.....do....	23,316	23,160	24,253	24,417	r24,476	24,505
Electrical machinery.....do....	13,053	13,176	14,317	14,647	r14,741	15,090
Transportation equipment.....do....	19,478	19,612	19,512	19,428	r19,594	19,869
Instruments and related products.....do....	4,342	4,380	4,687	4,728	r4,721	4,760
Nondurable goods industries, total 1/.....do....	57,101	57,986	61,227	61,694	r62,557	63,583
Food and kindred products.....do....	14,516	14,732	15,973	16,130	r16,530	16,870
Tobacco products.....do....	3,426	3,637	3,518	3,484	r3,549	3,571
Textile mill products.....do....	4,990	5,060	5,360	5,368	r5,426	5,444
Paper and allied products.....do....	4,907	4,958	5,273	5,532	r5,439	5,532
Chemicals and allied products.....do....	12,034	12,192	12,991	12,962	r13,038	13,201
Petroleum and coal products.....do....	4,552	4,650	5,083	5,156	r5,252	5,508
Rubber and plastics products.....do....	3,725	3,700	4,000	4,079	r4,016	4,096
NEW ORDERS, NET (NOT SEASONALLY ADJUSTED), TOTAL.....do....						
Durable goods industries, total.....do....	99,816	98,440	108,072	114,951	r113,402	110,909
Nondurable goods industries, total.....do....	48,521	47,365	52,228	53,973	r53,230	51,817
NEW ORDERS, NET (SEASONALLY ADJUSTED), TOTAL.....do....						
By industry group:	98,415	99,025	106,601	111,927	r111,625	111,589
Durable goods industries, total 1/.....do....	50,245	51,354	55,159	59,299	58,730	59,432
Primary metals.....do....	7,328	8,726	7,974	8,615	7,755	9,198
Fabricated metal products.....do....	6,455	6,661	6,960	7,832	r7,363	7,337
Machinery, except electrical.....do....	9,152	8,970	9,998	9,991	r10,060	10,180
Electrical machinery.....do....	6,036	6,251	6,713	6,338	r6,973	7,188
Transportation equipment.....do....	11,504	11,082	12,540	14,604	15,054	14,237
Nondurable goods industries, total.....do....	48,170	47,670	51,442	52,628	r52,895	52,157
Industries with unfilled orders.....do....	10,684	10,587	11,240	11,772	r11,789	11,454
Industries without unfilled orders.....do....	37,486	37,086	40,202	40,856	r41,106	40,703
UNFILLED ORDERS, END OF MONTH (UNADJ.), TOTAL.....do....						
Durable goods industries, total.....do....	170,937	170,104	177,780	178,392	r180,356	180,539
Nondurable goods industries with unfilled orders.....do....	162,513	161,600	169,532	169,823	r171,627	171,997
UNFILLED ORDERS, END OF MONTH (SEAS. ADJ.), TOTAL.....do....						
By industry group:	8,424	8,504	8,248	8,569	r8,729	8,542
Durable goods industries, total 1/.....do....	170,687	171,520	177,623	178,105	r180,168	182,285
Durable goods industries, total 1/.....do....	162,525	163,322	169,394	169,542	171,690	174,027
Primary metals.....do....	15,229	16,260	17,041	17,122	16,890	17,661
Fabricated metal products.....do....	22,940	22,723	23,374	23,501	r23,494	23,583
Machinery, except electrical.....do....	44,519	44,227	44,419	44,299	r44,236	44,254
Electrical machinery.....do....	21,530	21,900	23,741	23,437	r23,772	24,382
Transportation equipment.....do....	50,252	50,216	52,534	52,729	54,517	53,305
Nondurable goods industries with unfilled orders.....do....	8,162	8,198	8,229	8,463	r8,478	36,824
COMMODITY PRICES						
PRICES RECEIVED BY FARMERS, ALL FARM PRODUCTS....1910-14=100..						
Crops.....do....	477	r488	474	477	r484	461
Commercial vegetables.....do....	r445	r471	475	479	r482	445
Cotton.....do....	r385	r418	641	507	r482	436
Feed grains and hay.....do....	r485	r565	589	572	r567	534
Food grains.....do....	398	412	365	459	r352	325
Fruit.....do....	384	r382	282	277	r261	242
Tobacco.....do....	r321	r284	297	319	r374	354
Livestock and products.....do....	877	877	957	967	966	966
Dairy products.....do....	r509	505	471	473	485	476
Meat animals.....do....	r566	r559	577	577	r571	573
Poultry and eggs.....do....	r627	r626	544	551	585	568
PRICES PAID BY FARMERS:	r231	r226	240	232	220	217
All commodities and services.....do....	562	r569	590	597	r601	597
Family living items.....do....	557	561	562	565	570	573
Production items.....do....	559	576	583	592	594	588
All commod., services, int., taxes, and wage rates.....do....	650	657	685	692	r695	691
PARITY RATIO.....do....						
	73	r74	69	69	70	67

r/ Revised. 1/ Includes data for "other industries" not shown.
84,394

ITEM	1976		1977			
	Apr.	May	Feb.	Mar.	Apr.	May
CONSTRUCTION AND REAL ESTATE						
NEW CONSTRUCTION PUT IN PLACE (UNADJ.), TOTAL.....mil. \$..	r12,496	r11,708	r13,033	14,367
Private, total.....do....	r9,196	r9,269	r10,274	11,197
Residential (incl. farm).....do....	r5,120	r5,321	r6,099	6,915
New housing units.....do....	r3,797	r4,351	r4,851	5,548
Nonresidential buildings, total <u>1</u> /.....do....	r2,144	r2,078	2,204	2,252
Industrial.....do....	r602	554	r582	583
Commercial.....do....	r1,047	1,051	r1,108	1,151
Public, total.....do....	r3,299	r2,439	r2,759	3,170
NEW CONSTRUCTION PUT IN PLACE (SEASONALLY ADJUSTED AT ANNUAL RATES), TOTAL.....bil. \$..	r147.8	r163.3	r166.3	169.6
Private, total.....do....	r108.2	r127.9	r130.1	131.5
Residential (incl. farm).....do....	r59.2	r76.2	r78.1	80.4
New housing units.....do....	r45.4	r62.2	r63.7	66.2
Nonresidential buildings, total <u>1</u> /.....do....	r26.0	r26.7	r27.4	27.0
Industrial.....do....	r7.2	7.2	r7.3	7.0
Commercial.....do....	r12.8	r13.6	r13.9	13.8
Public, total.....do....	r39.6	r35.4	r36.2	38.0
CONSTRUCTION COST INDEXES:						
DEPARTMENT OF COMMERCE COMPOSITE.....1972=100..	141.7	142.7	150.5	150.9	150.6	152.0
METALS AND MANUFACTURES						
MACHINE TOOLS:						
Metal cutting type tools:						
Orders, new (net), total.....mil. \$..	102.65	128.95	135.35	200.20	r196.75	p199.70
Domestic.....do....	94.30	118.10	117.20	186.95	r188.05	p175.00
Shipments, total.....do....	121.20	118.50	111.90	129.90	r125.25	p130.50
Domestic.....do....	101.00	96.55	99.50	117.50	r110.95	p118.20
Order backlog, end of month.....do....	957.0	967.4	1,325.1	1,395.4	r1,466.9	p1,536.1
Metal forming type tools:						
Orders, new (net), total.....do....	45.95	40.35	56.55	62.55	55.15	p65.50
Domestic.....do....	41.55	35.05	52.65	53.00	51.35	p59.70
Shipments, total.....do....	52.20	43.50	56.75	53.30	51.50	p55.00
Domestic.....do....	42.75	36.05	50.65	49.15	45.70	p50.85
Order backlog, end of month.....do....	181.4	178.3	204.4	213.6	217.3	p227.8

r/ Revised. p/ Preliminary. 1/ Except farm and public utilities.
USCOMM--DC--84,394

UNITED STATES
GOVERNMENT PRINTING OFFICE
DIVISION OF PUBLIC DOCUMENTS
WASHINGTON, D.C. 20402

OFFICIAL BUSINESS

First-Class Mail

United States
Government
Printing Office

SUPERINTENDENT
OF DOCUMENTS
Washington, D.C. 20402

OFFICIAL BUSINESS
Penalty for private use, \$300

Postage and Fees Paid
U.S. Government Printing Office



WEEKLY BUSINESS STATISTICS