



# WEEKLY BUSINESS STATISTICS

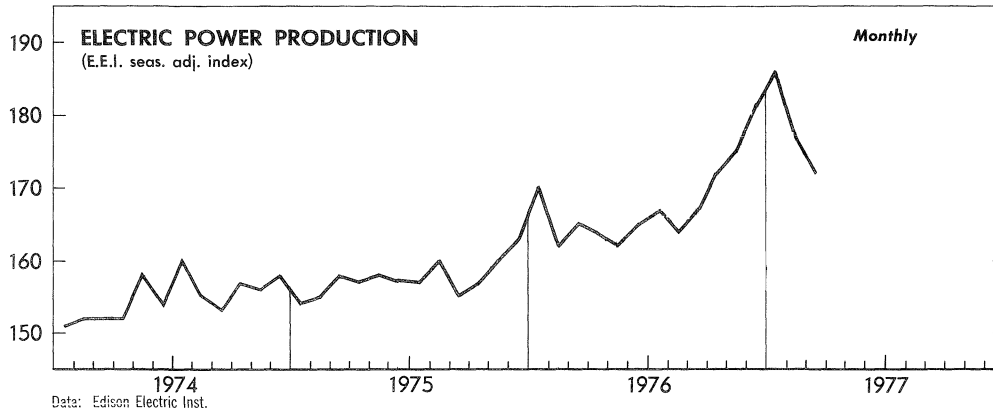


May 6, 1977

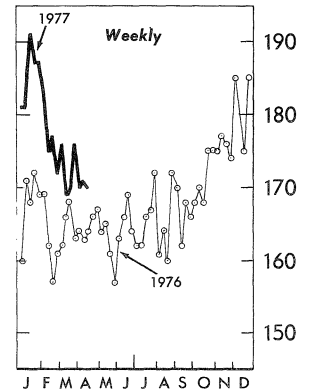
Annual Subscription: domestic, \$15.00, foreign, \$18.75 (no single copies sold). Order from Superintendent of Documents, U.S. Government Printing Office, Washington, D.C. 20402.

## U.S. DEPARTMENT OF COMMERCE/BUREAU OF ECONOMIC ANALYSIS

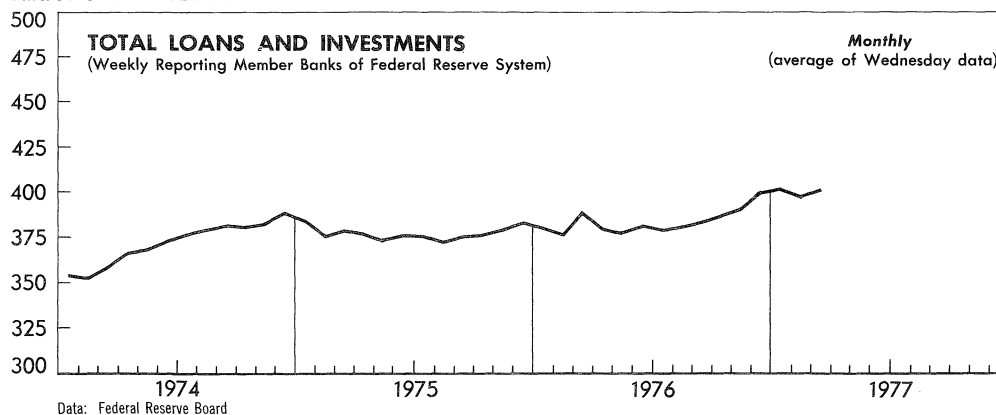
INDEX, 1967=100



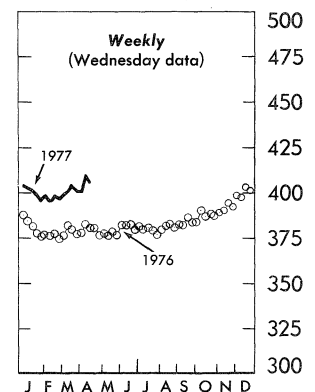
INDEX, 1967=100



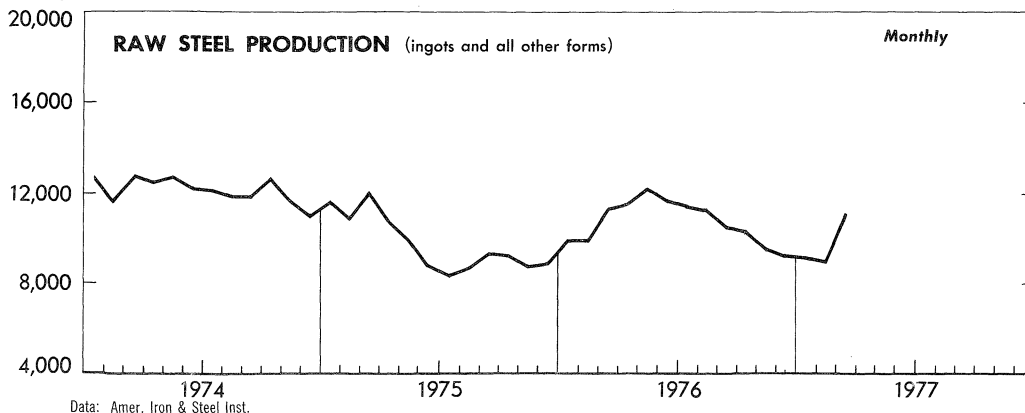
BILLIONS OF DOLLARS



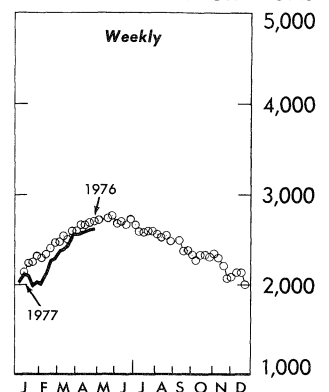
BILLIONS OF DOLLARS



SHORT TONS



SHORT TONS



WEEKLY BUSINESS STATISTICS updates selected data that are published monthly in the SURVEY OF CURRENT BUSINESS.

WEEKLY BUSINESS STATISTICS<sup>1</sup>

| ITEM  | 1976    |         | 1977    |         |         |         |
|---|---------|---------|---------|---------|---------|---------|
|   | Apr. 24 | May 1   | Apr. 9  | Apr. 16 | Apr. 23 | Apr. 30 |
| WHOLESALE PRICES, 22 COMMODITIES <u>2/</u> .....1967=100..          | 204.8   | 203.2   | 219.1   | 221.3   | 221.9   | 220.9   |
| 9 Foodstuffs.....do....   | 206.4   | 204.4   | 214.4   | 219.2   | 221.5   | 221.0   |
| 13 Raw industrials.....do....                                       | 203.6   | 202.3   | 222.3   | 222.5   | 222.1   | 220.7   |
| ALL RETAIL STORES, SALES.....mil. \$..                              | 12,245  | 12,668  | 14,127  | 13,497  | 13,856  | .....   |
| Nondurable goods stores.....do....                                  | 7,962   | 8,066   | 9,624   | 8,839   | 8,991   | .....   |
| INITIAL UNEMPLOYMENT CLAIMS, State programs.....thous..             | 312     | 314     | 367     | 317     | 314     | .....   |
| INSURED UNEMPLOYMENT, all programs.....do....                       | 3,860   | 3,775   | 3,690   | 3,550   | .....   | .....   |
| State programs (50 States, D.C. and Puerto Rico).....do....         | 2,976   | 2,902   | 2,912   | 2,793   | .....   | .....   |
| FAILURES, INDUST. AND COMMERCIAL (Dun & Bradstreet).....number..    | 188     | 157     | 167     | 236     | 178     | 151     |
| FINANCE:  |         |         |         |         |         |         |
| Currency in circulation <u>3/</u> .....mil. \$..                    | 87,106  | 86,527  | 93,649  | 94,703  | 94,605  | e94,056 |
| Federal Reserve bank credit outstanding, total <u>3/</u> ....do.... | 102,524 | 120,836 | 106,011 | 105,817 | 109,011 | 111,329 |
| Member bank reserve balances <u>3/</u> .....do....                  | 34,447  | 34,384  | 34,338  | 34,002  | 35,198  | 35,280  |
| Excess reserves, estimated <u>3/</u> .....do....                    | 130     | 112     | 287     | 249     | 45      | 180     |
| Assets and liabilities of large commercial banks: <u>4/</u>         |         |         |         |         |         |         |
| Demand deposits, adjusted.....do....                                | 107,196 | 104,618 | 111,728 | 112,602 | .....   | .....   |
| Savings deposits.....do....   | 79,169  | 79,349  | 95,386  | 95,057  | .....   | .....   |
| Loans and investments, gross adjusted, total.....do....             | 380,184 | 376,575 | 409,374 | 405,882 | .....   | .....   |
| U.S. Government obligations.....do....                              | 43,594  | 41,388  | 51,488  | 50,295  | .....   | .....   |
| Commercial and industrial loans (gross).....do....                  | 113,573 | 113,365 | 117,279 | 117,379 | .....   | .....   |
| Real estate loans (gross).....do....                                | 60,708  | 60,727  | 65,008  | 65,134  | .....   | .....   |
| Bond yields, domestic corporate (Moody's) <u>3/</u> .....percent..  | 9.01    | 9.01    | 8.52    | 8.50    | 8.46    | 8.46    |
| Stock prices, 500 stocks (Stand. & Poor's) <u>4/</u> ..1941-43=10.. | 103.32  | 102.13  | 97.91   | 100.16  | 100.40  | 97.96   |
| Industrial, 400 stocks.....do....                                   | 116.30  | 114.89  | 108.72  | 111.28  | 111.33  | 108.50  |
| PRODUCTION:   |         |         |         |         |         |         |
| Bituminous coal.....thous. sh. tons..                               | 13,955  | 13,895  | 11,055  | 13,645  | 14,560  | .....   |
| Electric power, by utilities.....mil. kw.-hr..                      | 35,614  | 35,798  | 37,206  | 36,464  | 37,167  | .....   |
| Motor vehicles (passenger cars).....number..                        | 199,469 | 186,498 | 154,832 | 184,948 | 216,228 | 199,027 |
| Petroleum (crude) and condensate <u>3/</u> .....thous. bbl..        | 8,265   | 8,146   | 8,058   | 8,058   | 8,058   | .....   |
| Steel, raw.....thous. sh. tons..                                    | 2,681   | 2,695   | 2,584   | 2,588   | 2,615   | 2,624   |
| Rate of capability utilization <u>5/</u> .....percent..             | 88.8    | 89.3    | 82.6    | 82.7    | 83.6    | 83.9    |
| RAIL FREIGHT, REVENUE TON-MILES.....bil..                           | 15.4    | 15.9    | 14.7    | 16.2    | 16.7    | .....   |

1/ Data do not always cover calendar weeks. 2/ Tuesday price. 3/ Daily average. 4/ Wednesday data. 5/ Capability for a full order book based on current availability of raw materials, fuels, supplies, and industry facilities. e/ Estimated.

## MONTHLY BUSINESS STATISTICS

| ITEM   | 1976    |          |          | 1977     |          |         |
|--|---------|----------|----------|----------|----------|---------|
|  | Feb.    | Mar.     | Dec.     | Jan.     | Feb.     | Mar.    |
| GENERAL BUSINESS INDICATORS  |         |          |          |          |          |         |
| MANUFACTURERS' SHIPMENTS: <u>1/</u>                                  |         |          |          |          |          |         |
| NOT SEASONALLY ADJUSTED, TOTAL <u>1/</u> .....mil. \$..              | r95,687 | r100,101 | r97,951  | r96,644  | r106,867 | 114,236 |
| Durable goods industries, total <u>2/</u> .....do....                | 48,360  | 51,865   | 50,726   | 49,189   | 54,908   | 60,719  |
| Stone, clay, and glass products.....do....                           | 2,314   | 2,585    | 2,320    | 2,286    | r2,546   | 2,969   |
| Primary metals.....do....  | 6,922   | 7,644    | 6,752    | 6,980    | 7,774    | 8,813   |
| Fabricated metal products.....do....                                 | 6,385   | 6,792    | 6,505    | 6,162    | r6,926   | 7,742   |
| Machinery, except electrical.....do....                              | 8,947   | 9,676    | 9,405    | 9,116    | r10,146  | 10,824  |
| Electrical machinery.....do....                                      | 5,758   | 6,009    | 6,565    | 6,012    | r6,634   | 6,714   |
| Transportation equipment.....do....                                  | 11,209  | 11,824   | 11,996   | 11,803   | 13,049   | 14,919  |
| Instruments and related products.....do....                          | 1,915   | 2,032    | 2,197    | 2,036    | r2,193   | 2,369   |
| Nondurable goods industries, total <u>1/</u> , <u>2/</u> .....do.... | r47,328 | r48,237  | r47,225  | r47,455  | r51,959  | 53,517  |
| Food and kindred products.....do....                                 | 14,337  | 14,496   | 14,599   | 14,209   | r15,406  | 15,684  |
| Tobacco products.....do....  | 635     | 693      | 751      | 669      | r671     | 717     |
| Textile mill products.....do....                                     | 3,164   | 3,406    | 3,097    | 2,949    | r3,270   | 3,660   |
| Paper and allied products.....do....                                 | 4,266   | 4,205    | 4,011    | 4,174    | r4,492   | 4,668   |
| Chemicals and allied products.....do....                             | 8,573   | 9,078    | 7,979    | 8,186    | r9,399   | 10,181  |
| Petroleum and coal products.....do....                               | 6,731   | 6,411    | 7,496    | 7,749    | r7,948   | 7,593   |
| Rubber and plastics products.....do....                              | 2,698   | 2,909    | 2,570    | 2,713    | r3,054   | 3,157   |
| SEASONALLY ADJUSTED, TOTAL <u>1/</u> .....do....                     | r95,262 | r97,502  | r104,700 | r103,397 | r106,092 | 111,372 |
| By industry group:   |         |          |          |          |          |         |
| Durable goods industries, total <u>2/</u> .....do....                | 48,430  | 50,382   | 55,520   | 53,247   | 54,729   | 59,096  |
| Stone, clay, and glass products.....do....                           | 2,511   | 2,625    | 2,703    | 2,644    | r2,765   | 3,016   |
| Primary metals.....do....  | 6,759   | 7,396    | 7,298    | 7,334    | 7,590    | 8,500   |
| Fabricated metal products.....do....                                 | 6,498   | 6,799    | 6,961    | 6,764    | r7,048   | 7,760   |
| Machinery, except electrical.....do....                              | 8,753   | 8,889    | 9,666    | 9,746    | r9,858   | 10,033  |
| Electrical machinery.....do....                                      | 5,722   | 5,872    | 6,700    | 6,546    | r6,549   | 6,556   |
| Transportation equipment.....do....                                  | 11,072  | 11,515   | 14,269   | 12,352   | 12,750   | 14,549  |
| Instruments and related products.....do....                          | 1,975   | 2,006    | 2,198    | 2,228    | r2,258   | 2,339   |

r/ Revised. 1/ Unadjusted and seas. adj. data for shipments and new orders (totals and total nondurables) have been revised back to Dec. 1975; see May 1977 SURVEY. 2/ Includes data for "other industries" not shown.  
84,301

| ITEM   | 1976    |          |          | 1977     |          |          |
|--|---------|----------|----------|----------|----------|----------|
|  | Feb.    | Mar.     | Dec.     | Jan.     | Feb.     | Mar.     |
| GENERAL BUSINESS INDICATORS--Con.                              |         |          |          |          |          |          |
| MANUFACTURERS' SHIPMENTS (SEAS. ADJ.)--Con.                    |         |          |          |          |          |          |
| By industry group--Con.  |         |          |          |          |          |          |
| Nondurable goods industries, total 1/ 2/.....mil. \$.          | r46,832 | r47,120  | r49,180  | r50,150  | r51,363  | 52,276   |
| Food and kindred products.....do....                           | 14,176  | 14,188   | 14,603   | 14,842   | r15,210  | 15,343   |
| Tobacco products.....do....                                    | 665     | 717      | 753      | 704      | r703     | 742      |
| Textile mill products.....do....                               | 3,239   | 3,262    | 3,302    | 3,269    | r3,346   | 3,503    |
| Paper and allied products.....do....                           | 4,215   | 4,146    | 4,296    | 4,358    | r4,435   | 4,601    |
| Chemicals and allied products.....do....                       | 8,329   | 8,613    | 8,637    | 8,661    | r9,126   | 9,652    |
| Petroleum and coal products.....do....                         | 6,647   | 6,471    | 7,484    | 7,878    | r7,833   | 7,656    |
| Rubber and plastics products.....do....                        | 2,681   | 2,821    | 2,815    | 2,950    | r3,037   | 3,063    |
| INVENTORIES, END OF MONTH:                                     |         |          |          |          |          |          |
| Book value (unadjusted), total.....do....                      | 157,883 | 158,671  | 167,299  | 169,300  | r170,396 | 170,606  |
| Durable goods industries, total.....do....                     | 100,913 | 101,693  | 105,516  | 107,378  | r108,439 | 108,663  |
| Nondurable goods industries, total.....do....                  | 56,971  | 56,979   | 61,783   | 61,922   | r61,957  | 61,943   |
| Book value (seasonally adjusted), total.....do....             | 156,458 | 157,560  | 166,587  | 167,482  | r168,449 | 169,164  |
| By industry group:   |         |          |          |          |          |          |
| Durable goods industries, total 2/.....do....                  | 99,942  | 100,740  | 105,729  | 106,562  | r107,222 | 107,621  |
| Stone, clay, and glass products.....do....                     | 3,823   | 3,769    | 4,194    | 4,248    | r4,234   | 4,150    |
| Primary metals.....do....                                      | 15,301  | 15,546   | 17,329   | 17,197   | r17,276  | 17,325   |
| Fabricated metal products.....do....                           | 12,850  | 12,840   | 13,173   | 13,344   | r13,249  | 13,237   |
| Machinery, except electrical.....do....                        | 23,159  | 23,268   | 23,987   | 24,281   | r24,253  | 24,420   |
| Electrical machinery.....do....                                | 12,745  | 12,947   | 14,112   | 14,054   | r14,317  | 14,589   |
| Transportation equipment.....do....                            | 19,237  | 19,354   | 19,121   | 19,245   | r19,512  | 19,449   |
| Instruments and related products.....do....                    | 4,324   | 4,327    | 4,574    | 4,657    | r4,687   | 4,740    |
| Nondurable goods industries, total 2/.....do....               | 56,516  | 56,820   | 60,858   | 60,920   | r61,227  | 61,543   |
| Food and kindred products.....do....                           | 14,438  | 14,459   | 15,648   | 15,775   | r15,973  | 16,107   |
| Tobacco products.....do....                                    | 3,385   | 3,394    | 3,508    | 3,471    | r3,518   | 3,485    |
| Textile mill products.....do....                               | 4,984   | 4,963    | 5,253    | 5,269    | r5,360   | 5,417    |
| Paper and allied products.....do....                           | 4,807   | 4,862    | 5,200    | 5,220    | r5,273   | 5,368    |
| Chemicals and allied products.....do....                       | 11,959  | 12,042   | 13,032   | 13,009   | r12,991  | 12,954   |
| Petroleum and coal products.....do....                         | 4,732   | 4,741    | 5,148    | 5,156    | r5,083   | 5,119    |
| Rubber and plastics products.....do....                        | 3,714   | 3,752    | 3,888    | 3,965    | r4,000   | 4,055    |
| NEW ORDERS, NET (NOT SEASONALLY ADJUSTED), TOTAL 1/.....do.... | r95,716 | r101,070 | r99,503  | r99,067  | r108,003 | 115,110  |
| Durable goods industries, total.....do....                     | 48,230  | 52,702   | 52,067   | 51,379   | 55,844   | 61,209   |
| Nondurable goods industries, total 1/.....do....               | r47,486 | r48,369  | r47,436  | r47,688  | r52,159  | 53,901   |
| NEW ORDERS, NET (SEASONALLY ADJUSTED), TOTAL 1/.....do....     | r94,755 | r98,267  | r106,825 | r105,116 | r106,534 | 112,121  |
| By industry group:   |         |          |          |          |          |          |
| Durable goods industries, total 2/.....do....                  | 47,930  | 51,111   | 57,265   | 54,943   | 55,159   | 59,552   |
| Primary metals.....do....                                      | 6,812   | 7,787    | 7,252    | 7,987    | 7,974    | 8,574    |
| Fabricated metal products.....do....                           | 6,350   | 6,587    | 7,072    | 6,924    | r6,960   | 7,989    |
| Machinery, except electrical.....do....                        | 8,563   | 8,195    | 9,629    | 10,219   | r9,998   | 9,800    |
| Electrical machinery.....do....                                | 5,781   | 5,935    | 7,139    | 6,871    | r6,713   | 6,235    |
| Transportation equipment.....do....                            | 10,710  | 12,783   | 15,580   | 12,340   | 12,540   | 14,991   |
| Nondurable goods industries, total 1/.....do....               | r46,825 | r47,155  | r49,560  | r50,173  | r51,375  | 52,569   |
| Industries with unfilled orders.....do....                     | 10,376  | 10,509   | 11,289   | 11,019   | r11,240  | 11,915   |
| Industries without unfilled orders 1/.....do....               | r36,449 | r36,646  | r38,271  | r39,154  | r40,135  | 40,654   |
| UNFILLED ORDERS, END OF MONTH (UNADJ.), TOTAL.....do....       | 169,689 | 170,658  | 174,222  | 176,648  | r177,780 | 178,657  |
| Durable goods industries, total.....do....                     | 161,693 | 162,529  | 166,408  | 168,599  | 169,532  | 170,025  |
| Nondurable goods industries with unfilled orders.....do....    | 7,996   | 8,128    | 7,814    | 8,049    | r8,248   | 8,632    |
| UNFILLED ORDERS, END OF MONTH (SEAS. ADJ.), TOTAL.....do....   | 169,686 | 170,450  | 175,453  | 177,179  | r177,623 | 178,372  |
| By industry group:   |         |          |          |          |          |          |
| Durable goods industries, total 2/.....do....                  | 161,697 | 162,426  | 167,261  | 168,962  | 169,394  | 169,848  |
| Primary metals.....do....                                      | 16,011  | 15,011   | 16,004   | 16,658   | 17,041   | 17,114   |
| Fabricated metal products.....do....                           | 23,428  | 23,217   | 23,302   | 23,464   | r23,374  | 23,603   |
| Machinery, except electrical.....do....                        | 45,290  | 44,596   | 43,808   | 44,279   | r44,419  | 44,187   |
| Electrical machinery.....do....                                | 21,264  | 21,327   | 23,251   | 23,575   | r23,741  | 23,420   |
| Transportation equipment.....do....                            | 48,906  | 50,175   | 52,753   | 52,744   | 52,534   | 52,977   |
| Nondurable goods industries with unfilled orders.....do....    | 7,989   | 8,024    | 8,192    | 8,217    | r8,229   | 8,524    |
| FOREIGN TRADE  |         |          |          |          |          |          |
| EXPORTS (MDSE.), INCL. REEXPORTS, TOTAL.....mil. \$.           | 8,740.6 | 9,828.5  | 10,798.6 | 8,992.7  | 9,408.7  | 11,052.3 |
| Excl. Department of Defense Shipments.....do....               | 8,735.8 | 9,823.2  | 10,794.5 | 8,975.9  | 9,403.7  | 11,044.5 |
| Seasonally adjusted.....do....                                 | 8,917.7 | 9,020.4  | 10,410.4 | 9,598.9  | 9,807.8  | 10,071.6 |
| By commodity groups and principal commodities:                 |         |          |          |          |          |          |
| Food and live animals.....do....                               | 1,159.8 | 1,244.3  | 1,220.8  | 1,077.0  | 1,114.1  | 1,287.7  |
| Beverages and tobacco.....do....                               | 137.6   | 118.1    | 191.9    | 166.3    | 133.7    | 157.2    |
| Crude materials, inedible, exc. fuels.....do....               | 794.1   | 903.1    | 1,101.9  | 1,040.8  | 1,188.2  | 1,241.8  |
| Mineral fuels, lubricants, etc.....do....                      | 280.2   | 301.5    | 361.1    | 217.3    | 267.8    | 290.4    |
| Animal and vegetable oils, fats, waxes.....do....              | 73.8    | 77.9     | 94.8     | 77.3     | 94.8     | 134.5    |
| Chemicals.....do....   | 714.9   | 863.6    | 930.7    | 809.3    | 910.0    | 943.1    |
| Manufactured goods.....do....                                  | 889.9   | 1,019.0  | 996.6    | 871.0    | 926.0    | 1,035.7  |
| Machinery and transport equipment, total.....do....            | 3,879.7 | 4,316.0  | 4,833.8  | 3,824.5  | 3,869.2  | 4,819.7  |
| Electrical.....do....  | 690.0   | 793.2    | 892.0    | 759.0    | 764.7    | 960.5    |
| Transport equipment, total.....do....                          | 1,477.0 | 1,541.1  | 1,976.2  | 1,304.2  | 1,323.7  | 1,810.2  |
| GENERAL IMPORTS, TOTAL.....do....                              | 8,111.2 | 10,202.1 | 11,450.2 | 10,932.9 | 10,505.2 | 13,551.7 |
| Seasonally adjusted.....do....                                 | 9,032.5 | 9,469.2  | 11,020.4 | 11,268.7 | 11,673.7 | 12,459.0 |
| By commodity groups and principal commodities:                 |         |          |          |          |          |          |
| Food and live animals.....do....                               | 669.5   | 890.1    | 1,031.4  | 1,008.1  | 1,042.3  | 1,214.1  |
| Beverages and tobacco.....do....                               | 158.3   | 167.8    | 155.4    | 128.1    | 117.8    | 156.4    |
| Crude materials, inedible, exc. fuels.....do....               | 439.5   | 539.5    | 668.1    | 545.0    | 547.0    | 639.1    |
| Mineral fuels, lubricants, etc.....do....                      | 2,302.3 | 2,748.2  | 3,332.8  | 3,512.6  | 3,232.9  | 4,679.7  |
| Animal and vegetable oils and fats.....do....                  | 51.5    | 34.4     | 50.0     | 53.2     | 52.9     | 45.0     |
| Chemicals.....do....   | 316.6   | 410.2    | 453.6    | 402.1    | 407.1    | 517.1    |
| Manufactured goods.....do....                                  | 1,108.6 | 1,473.7  | 1,629.0  | 1,498.0  | 1,397.0  | 1,773.9  |
| Machinery and transport equipment.....do....                   | 2,104.9 | 2,724.0  | 2,795.4  | 2,569.3  | 2,504.5  | 3,151.4  |

7/ Revised. 1/ See corresponding note on p. 2. 2/ Includes data for "other industries" not shown.

| ITEM  | 1976   |        |         | 1977    |          |          |
|---|--------|--------|---------|---------|----------|----------|
|   | Feb.   | Mar.   | Dec.    | Jan.    | Feb.     | Mar.     |
| <b>METALS AND MANUFACTURES</b>                        |        |        |         |         |          |          |
| <b>STEEL PRODUCTS, NET SHIPMENTS:</b>                 |        |        |         |         |          |          |
| Total (all grades).....thous. short tons..            | 6,840  | 8,259  | 6,334   | 6,459   | 6,690    | .....    |
| By products:  |        |        |         |         |          |          |
| Semifinished products.....do....                      | 360    | 417    | 321     | 275     | 295      | .....    |
| Structural shapes (heavy), steel piling.....do....    | 319    | 389    | 303     | 299     | 320      | .....    |
| Plates.....do....                                     | 550    | 652    | 540     | 525     | 554      | .....    |
| Rails and accessories.....do....                      | 156    | 176    | 187     | 143     | 141      | .....    |
| Bars and tool steel, total.....do....                 | 1,135  | 1,321  | 1,013   | 1,024   | 1,086    | .....    |
| Bars:   |        |        |         |         |          |          |
| Hot rolled (incl. light shapes).....do....            | 721    | 834    | 611     | 624     | 663      | .....    |
| Reinforcing.....do....                                | 294    | 334    | 274     | 265     | 281      | .....    |
| Pipe and tubing.....do....                            | 546    | 609    | 460     | 437     | 528      | .....    |
| Wire and wire products.....do....                     | 188    | 241    | 166     | 170     | 183      | .....    |
| Tin mill products.....do....                          | 450    | 540    | 470     | 622     | 505      | .....    |
| Sheets and strip (incl. electrical), total.....do.... | 3,136  | 3,916  | 2,873   | 2,963   | 3,077    | .....    |
| Sheets: Hot rolled.....do....                         | 1,070  | 1,372  | 1,037   | 1,004   | 1,113    | .....    |
| Cold rolled.....do....                                | 1,410  | 1,714  | 1,228   | 1,322   | 1,343    | .....    |
| <b>MACHINE TOOLS:</b>                                 |        |        |         |         |          |          |
| Metal cutting type tools:                             |        |        |         |         |          |          |
| Orders, new (net), total.....mil. \$..                | 110.00 | 122.00 | 171.10  | 153.45  | r135.35  | p211.50  |
| Domestic.....do....                                   | 95.80  | 98.00  | 150.50  | 139.70  | r117.20  | p190.05  |
| Shipments, total.....do....                           | 129.80 | 145.85 | 161.95  | 94.30   | r111.90  | p129.20  |
| Domestic.....do....                                   | 109.15 | 123.80 | 145.70  | 80.55   | r99.50   | p116.50  |
| Order backlog, end of month.....do....                | 999.4  | 975.6  | 1,242.4 | 1,301.6 | r1,325.1 | p1,407.4 |
| Metal forming type tools:                             |        |        |         |         |          |          |
| Orders, new (net), total.....do....                   | 34.55  | 40.90  | 58.15   | 46.15   | 56.55    | p62.30   |
| Domestic.....do....                                   | 30.15  | 35.70  | 53.50   | 42.50   | 52.65    | p53.00   |
| Shipments, total.....do....                           | 45.25  | 54.70  | 47.55   | 50.75   | 56.75    | p53.30   |
| Domestic.....do....                                   | 37.60  | 41.60  | 40.65   | 36.45   | 50.65    | p49.15   |
| Order backlog, end of month.....do....                | 201.4  | 187.6  | 209.2   | 204.6   | 204.4    | p213.4   |

r/ Revised. p/ Preliminary.  
USCOMM--DC--84,301

UNITED STATES  
GOVERNMENT PRINTING OFFICE  
DIVISION OF PUBLIC DOCUMENTS  
WASHINGTON, D.C. 20402

OFFICIAL BUSINESS

**First-Class Mail**

United States  
Government  
Printing Office

SUPERINTENDENT  
OF DOCUMENTS  
Washington, D.C. 20402

OFFICIAL BUSINESS  
Penalty for private use, \$300

Postage and Fees Paid  
U.S. Government Printing Office



WEEKLY SUPPLEMENT

**SURVEY OF CURRENT BUSINESS**