



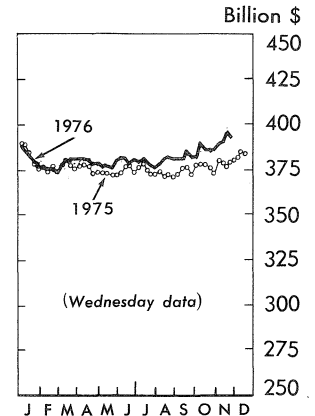
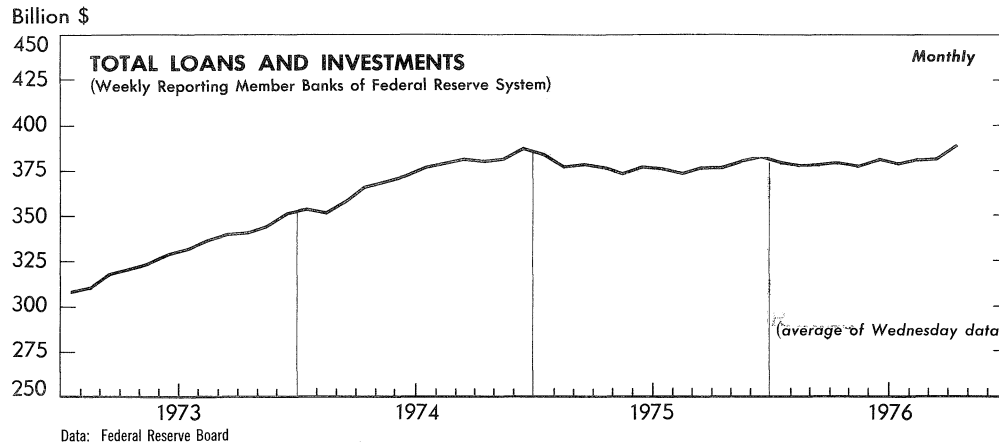
# BUSINESS STATISTICS



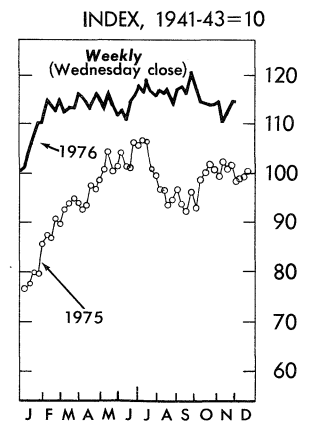
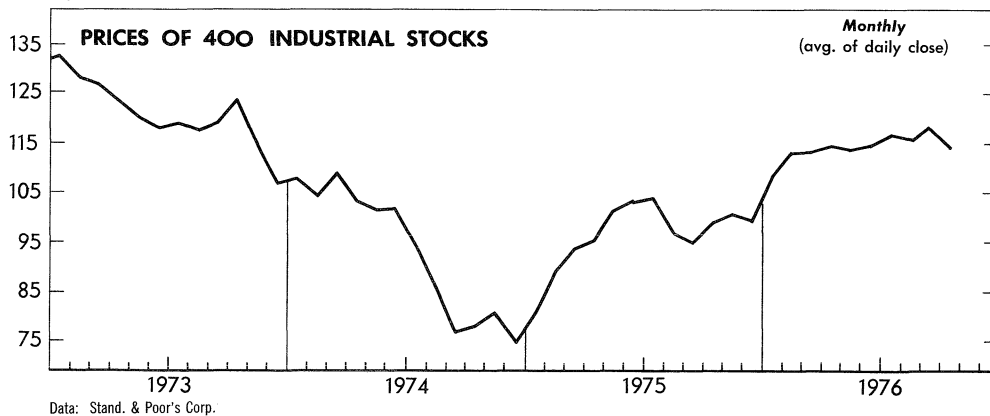
A WEEKLY  
SUPPLEMENT  
TO THE  
SURVEY OF CURRENT BUSINESS\*

December 10, 1976

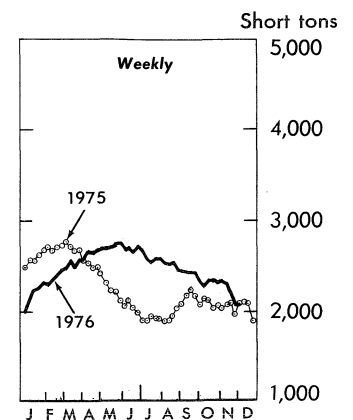
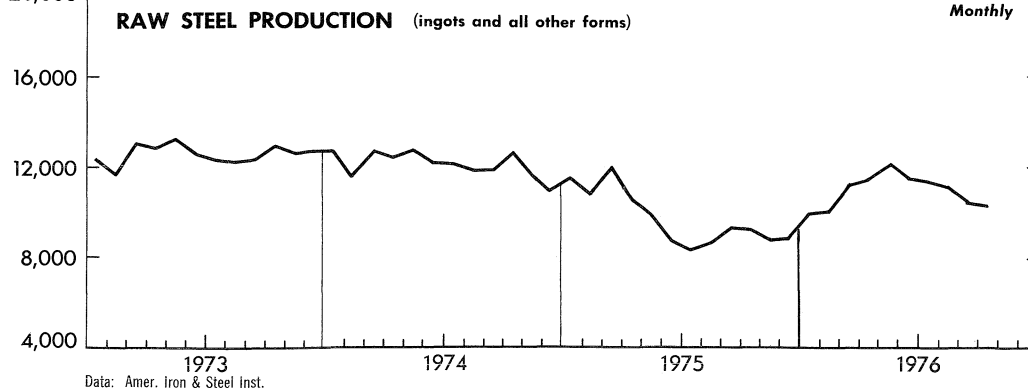
## U.S. DEPARTMENT OF COMMERCE/BUREAU OF ECONOMIC ANALYSIS



INDEX, 1941-43=10



Short tons



WEEKLY BUSINESS STATISTICS<sup>1</sup>

ITEM	1975		1976			
	Nov. 29	Dec. 6	Nov. 13	Nov. 20	Nov. 27	Dec. 4
WHOLESALE PRICES, 22 COMMODITIES <u>2/</u> .....1967=100..	190.8	189.6	197.0	198.2	198.2	197.3
9 Foodstuffs.....do....	205.3	203.1	191.6	192.7	192.7	191.5
13 Raw industrials.....do....	181.4	180.7	200.8	202.0	202.0	201.3
ALL RETAIL STORES, SALES.....mil. \$..	12,130	12,950	12,912	13,323	13,065	.....
Nondurable goods stores.....do....	8,378	9,455	8,893	9,152	9,083	.....
INITIAL UNEMPLOYMENT CLAIMS, State programs.....thous..	403	488	363	431	369	.....
INSURED UNEMPLOYMENT, all programs.....do....	4,389	4,367	3,458	3,291	.....	.....
State programs (50 States, D.C., and Puerto Rico)....do....	3,285	3,287	2,691	2,560	.....	.....
FAILURES, INDUS. AND COMMERCIAL (Dun & Bradstreet)...number..	154	200	160	169	171	160
FINANCE:						
Currency in circulation <u>3/</u> .....mil. \$..	84,145	84,742	91,355	92,014	92,255	e92,754
Federal Reserve bank credit outstanding, total <u>3/</u> ....do....	99,393	98,850	104,724	106,244	106,495	107,747
Member bank reserve balances <u>3/</u> .....do....	34,684	34,817	34,109	35,263	34,417	35,246
Excess reserves, estimated <u>3/</u> .....do....	184	313	75	434	145	511
Assets and liabilities of large commercial banks: <u>4/</u>						
Demand deposits, adjusted.....do....	103,285	104,320	105,987	107,265	104,354	.....
Savings deposits.....do....	67,736	67,552	85,365	85,762	86,073	.....
Loans and investments, gross adjusted, total.....do....	380,152	380,373	390,006	394,392	392,774	.....
U.S. Government obligations.....do....	37,691	37,859	44,617	47,356	46,967	.....
Commercial and industrial loans (gross).....do....	119,274	119,311	114,310	114,702	115,008	.....
Real estate loans (gross).....do....	59,782	59,482	62,893	63,117	63,029	.....
Bond yields, domestic corporate (Moody's) <u>3/</u> .....percent..	9.46	9.47	8.60	8.60	8.54	8.50
Stock prices, 500 stocks (Stand. & Poor's) <u>4/</u> ..1941-43=10..	90.94	87.60	98.81	100.61	102.41	102.49
Industrial, 400 stocks.....do....	101.85	98.04	110.26	112.30	114.20	114.13
PRODUCTION:						
Bituminous coal.....thous. sh. tons..	11,210	13,135	13,820	14,115	11,995	.....
Electric power, by utilities.....mil. kw.-hr..	36,222	37,130	39,800	39,955	38,248	.....
Motor vehicles (passenger cars).....number..	97,987	160,063	193,315	189,899	113,327	202,773
Petroleum (crude) and condensate <u>3/</u> .....thous. bbl..	8,297	8,218	8,054	8,054	8,054	.....
Steel, raw.....thous. sh. tons..	1,985	2,086	2,305	2,210	2,084	2,090
Rate of capability utilization <u>5/</u> .....percent..	.....	.....	75.1	72.0	67.9	68.1
RAIL FREIGHT, REVENUE TON-MILES.....bil..	12.9	14.9	16.3	16.3	13.5	....

1/ Data do not always cover calendar weeks. 2/ Tuesday price. 3/ Daily average. 4/ Wednesday data. 5/ Capability for a full order book based on current availability of raw materials, fuels, supplies, and industry facilities. e/ Estimated.

## MONTHLY BUSINESS STATISTICS

ITEM	1975		1976			
	Sept.	Oct.	July	Aug.	Sept.	Oct.
GENERAL BUSINESS INDICATORS						
MANUFACTURERS' SHIPMENTS:						
NOT SEASONALLY ADJUSTED, TOTAL.....mil. \$..	90,068	90,552	87,504	93,483	r98,970	96,932
Durable goods industries, total <u>1/</u> .....do....	45,285	45,491	43,746	47,084	50,161	48,875
Stone, clay, and glass products.....do....	2,424	2,541	2,362	2,625	r2,643	2,573
Primary metals.....do....	7,025	6,553	6,997	7,457	7,741	7,378
Fabricated metal products.....do....	5,677	5,703	5,577	6,000	r6,133	6,017
Machinery, except electrical.....do....	7,660	7,656	7,590	7,796	r8,629	8,224
Electrical machinery.....do....	5,807	5,890	5,516	6,090	r6,658	6,531
Transportation equipment.....do....	10,251	10,808	9,710	10,222	11,104	11,174
Instruments and related products.....do....	1,611	1,598	1,530	1,646	r1,746	1,692
Nondurable goods industries, total <u>1/</u> .....do....	44,783	45,061	43,758	46,399	r48,809	48,057
Food and kindred products.....do....	14,872	14,805	14,184	14,520	r15,769	15,383
Tobacco products.....do....	582	637	617	620	r644	716
Textile mill products.....do....	3,209	3,273	2,684	3,133	r3,391	3,391
Paper and allied products.....do....	3,609	3,650	3,699	4,042	r4,157	4,008
Chemicals and allied products.....do....	7,878	7,699	7,272	7,767	r8,392	7,830
Petroleum and coal products.....do....	5,742	5,788	6,344	6,438	r6,447	6,403
Rubber and plastics products.....do....	2,153	2,170	2,035	2,200	r2,215	2,392
SEASONALLY ADJUSTED, TOTAL.....do....	86,200	87,403	93,912	94,524	r93,864	93,592
By industry group:						
Durable goods industries, total <u>1/</u> .....do....	43,192	43,607	47,779	48,338	47,035	46,926
Stone, clay, and glass products.....do....	2,265	2,391	2,399	2,455	r2,470	2,420
Primary metals.....do....	6,977	6,543	7,660	7,680	7,676	7,358
Fabricated metal products.....do....	5,304	5,511	5,986	5,914	r5,734	5,814
Machinery, except electrical.....do....	7,398	7,776	8,310	8,314	r8,345	8,386
Electrical machinery.....do....	5,453	5,634	6,040	6,239	r6,252	6,244
Transportation equipment.....do....	9,823	9,736	11,093	11,172	9,829	10,080
Instruments and related products.....do....	1,481	1,530	1,641	1,640	r1,604	1,622

r/ Revised. 1/ Includes data for "other industries" not shown.  
84,086

ITEM	1975		1976			
	Sept.	Oct.	July	Aug.	Sept.	Oct.
GENERAL BUSINESS INDICATORS--Con.						
MANUFACTURERS' SHIPMENTS (SEAS. ADJ.)--Con.						
By industry group--Con.						
Nondurable goods industries, total 1/.....mil. \$..	43,008	43,796	46,133	46,186	r46,829	46,666
Food and kindred products.....do....	14,073	14,275	14,776	14,626	r14,901	14,845
Tobacco products.....do....	562	639	604	598	r622	719
Textile mill products.....do....	3,053	3,008	3,134	3,092	r3,228	3,117
Paper and allied products.....do....	3,516	3,580	3,928	3,996	r4,050	3,933
Chemicals and allied products.....do....	7,618	7,762	7,896	7,935	r8,079	7,855
Petroleum and coal products.....do....	5,731	5,871	6,406	6,465	r6,441	6,497
Rubber and plastics products.....do....	2,106	2,098	2,204	2,198	r2,169	2,309
INVENTORIES, END OF MONTH:						
Book value (unadjusted), total.....do....	145,037	145,646	151,014	152,061	r153,084	155,134
Durable goods industries, total.....do....	95,927	95,542	97,459	97,896	r98,464	99,686
Nondurable goods industries, total.....do....	49,110	50,104	53,555	54,165	r54,620	55,448
Book value (seasonally adjusted), total.....do....	146,413	146,510	151,824	152,773	r154,614	156,077
By industry group:						
Durable goods industries, total 1/.....do....	96,640	96,215	97,826	98,109	r99,216	100,389
Stone, clay, and glass products.....do....	3,613	3,605	3,711	3,794	r3,793	3,868
Primary metals.....do....	13,789	13,776	14,847	14,936	r15,088	15,269
Fabricated metal products.....do....	11,028	10,914	10,618	10,606	r10,890	11,140
Machinery, except electrical.....do....	21,713	21,503	20,870	20,997	r21,107	21,254
Electrical machinery.....do....	13,212	13,245	13,597	13,720	r13,773	14,004
Transportation equipment.....do....	21,357	21,300	21,860	21,612	r21,961	22,141
Instruments and related products.....do....	3,835	3,818	3,825	3,867	r3,906	3,938
Nondurable goods industries, total 1/.....do....	49,773	50,295	53,998	54,664	r55,398	55,688
Food and kindred products.....do....	11,362	11,687	12,313	12,628	r12,729	12,713
Tobacco products.....do....	3,113	3,262	3,445	3,511	r3,555	3,562
Textile mill products.....do....	4,384	4,473	4,814	4,912	r4,941	4,867
Paper and allied products.....do....	4,573	4,571	4,882	4,989	4,993	5,040
Chemicals and allied products.....do....	10,783	10,750	11,599	11,768	11,949	12,052
Petroleum and coal products.....do....	4,212	4,242	4,582	4,560	r4,736	4,790
Rubber and Plastics products.....do....	2,941	2,946	2,975	2,954	r3,017	3,069
NEW ORDERS, NET (NOT SEASONALLY ADJUSTED), TOTAL.....do....	88,835	89,252	89,073	93,126	r98,103	97,494
Durable goods industries, total.....do....	43,907	43,933	45,377	46,909	49,292	49,435
Nondurable goods industries, total.....do....	44,928	45,319	43,696	46,217	r48,811	48,059
NEW ORDERS, NET (SEASONALLY ADJUSTED), TOTAL.....do....	85,482	86,336	94,204	94,143	r93,566	94,274
By industry group:						
Durable goods industries, total 1/.....do....	42,256	42,307	48,122	48,051	46,648	47,635
Primary metals.....do....	6,294	6,579	7,662	7,264	7,462	7,099
Fabricated metal products.....do....	5,196	5,282	6,250	5,909	r5,820	5,812
Machinery, except electrical.....do....	7,120	7,425	8,639	8,155	r8,283	8,264
Electrical machinery.....do....	5,144	5,510	5,936	6,311	r5,889	6,640
Transportation equipment.....do....	9,982	9,371	10,884	11,305	9,912	10,649
Nondurable goods industries, total.....do....	43,226	44,029	46,082	46,092	r46,918	46,639
Industries with unfilled orders.....do....	10,166	10,295	10,698	10,711	r11,198	10,806
Industries without unfilled orders.....do....	33,060	33,734	35,384	35,381	r35,720	35,833
UNFILLED ORDERS, END OF MONTH (UNADJ.), TOTAL.....do....	122,519	121,217	122,480	122,125	r121,256	121,820
Durable goods industries, total.....do....	117,868	116,306	116,961	116,788	115,918	116,477
Nondurable goods industries with unfilled orders.....do....	4,651	4,911	5,519	5,337	r5,338	5,343
UNFILLED ORDERS, END OF MONTH (SEAS. ADJ.), TOTAL.....do....	122,761	121,697	122,271	121,885	r121,587	122,264
By industry group:						
Durable goods industries, total 1/.....do....	118,004	116,710	116,811	116,522	116,133	116,838
Primary metals.....do....	13,740	13,778	15,787	15,372	15,157	14,897
Fabricated metal products.....do....	18,097	17,867	16,906	16,901	r16,986	16,983
Machinery, except electrical.....do....	26,209	25,859	24,237	24,078	r24,013	23,890
Electrical machinery.....do....	19,112	18,989	20,028	20,098	r19,733	20,128
Transportation equipment.....do....	32,396	32,033	31,147	31,280	31,365	31,933
Nondurable goods industries with unfilled orders.....do....	4,757	4,987	5,460	5,363	r5,454	5,426
	1975		1976			
	Oct.	Nov.	Aug.	Sept.	Oct.	Nov.
COMMODITY PRICES						
SPOT MARKET PRICES, BASIC COMMODITIES:						
22 Commodities.....1967=100..	201.4	191.7	206.9	203.1	196.5	.....
9 Foodstuffs.....do....	233.2	210.1	202.9	198.5	189.2	.....
13 Raw industrials.....do....	181.9	179.8	209.6	206.2	201.6	.....
WHOLESALE PRICE INDEXES:						
ALL COMMODITIES.....do....	178.9	178.2	183.7	184.7	185.2	185.6
Farm products.....do....	197.3	191.7	189.3	191.8	186.6	183.6
Food and feeds, processed.....do....	186.2	182.6	176.8	177.1	174.9	174.8
Industrial commodities.....do....	174.7	175.4	183.6	184.7	186.3	187.0
Chemicals and allied products.....do....	182.3	182.9	187.7	188.5	188.4	188.7
Fuels and related products, and power.....do....	256.5	257.0	269.1	270.9	277.0	281.8
Furniture and household durables.....do....	141.1	141.5	146.1	146.5	147.0	147.4
Hides, skins, and leather products.....do....	152.4	154.4	171.3	173.6	170.8	169.7
Lumber and wood products.....do....	179.1	178.3	207.5	212.7	213.6	214.3
Machinery and equipment.....do....	164.1	165.3	171.4	172.9	174.2	174.7
Metals and metal products.....do....	187.2	187.0	199.0	200.0	199.9	199.9

r/ Revised. 1/ Includes data for "other industries" not shown.  
84,086

ITEM	1975		1976			
	Oct.	Nov.	Aug.	Sept.	Oct.	Nov.
COMMODITY PRICES--Con.						
WHOLESALE PRICE INDEX--Con.						
Industrial Commodities--Con.						
Nonmetallic mineral products.....1967=100..	177.1	177.7	187.7	188.2	189.1	189.1
Pulp, paper, and allied products.....do....	170.9	171.3	181.0	181.6	181.4	181.7
Rubber and plastics products.....do....	151.5	151.8	161.0	163.6	164.5	164.8
Textile products and apparel.....do....	141.3	143.2	149.2	149.0	149.3	149.8
Transportation equipment.....Dec. 1968=100..	146.6	147.2	150.2	151.0	156.0	156.2
Motor vehicles and equipment.....1967=100..	150.0	150.6	152.8	153.5	159.0	159.1
PURCHASING POWER OF THE DOLLAR AS MEASURED BY--						
Wholesale prices.....1967=\$1.00..	\$0.559	\$0.561	\$0.544	\$0.541	\$0.540	\$0.539
CONSTRUCTION AND REAL ESTATE	1975		1976			
	Sept.	Oct.	July	Aug.	Sept.	Oct.
NEW CONSTRUCTION PUT IN PLACE (UNADJ.), TOTAL.....mil. \$..						
Private, total.....do....	12,755	12,703	13,236	r13,976	r14,004	13,851
Residential (incl. farm).....do....	8,770	8,769	9,916	r10,317	r10,404	10,493
New housing units.....do....	4,617	4,558	5,815	r5,947	r5,982	6,000
Nonresidential building, total 1/.....do....	3,447	3,530	4,491	r4,628	r4,726	4,812
Industrial.....do....	2,329	2,333	2,143	2,340	r2,305	2,328
Commercial.....do....	689	678	533	590	r592	574
Public, total.....do....	1,132	1,154	1,078	1,164	r1,134	1,171
NEW CONSTRUCTION PUT IN PLACE (SEASONALLY ADJUSTED AT ANNUAL RATES), TOTAL.....bil. \$..						
Private, total.....do....	3,985	3,934	3,320	r3,659	r3,600	3,358
Residential (incl. farm).....do....	136.3	136.2	145.1	r147.5	r150.6	148.8
New housing units.....do....	95.4	95.6	108.4	r110.2	r113.0	114.4
Nonresidential buildings, total 1/.....do....	48.4	49.4	60.6	r60.0	r62.4	64.9
Industrial.....do....	35.7	37.5	46.9	r46.5	r48.8	51.1
Commercial.....do....	26.1	25.6	24.8	26.6	r26.3	25.6
Public, total.....do....	7.9	7.6	6.1	6.9	6.9	6.4
CONSTRUCTION COST INDEXES:	12.3	12.4	12.6	13.0	r12.7	12.6
DEPARTMENT OF COMMERCE COMPOSITE.....1967=100..	40.9	40.6	36.8	r37.3	r37.6	34.4
	190.2	190.2	r200.8	r200.9	r200.9	202.3

r/ Revised. 1/ Except farm and public utilities.

USCOMM--DC-- 84,086

UNITED STATES  
GOVERNMENT PRINTING OFFICE  
DIVISION OF PUBLIC DOCUMENTS  
WASHINGTON, D.C. 20402

OFFICIAL BUSINESS

First-Class Mail

POSTAGE AND FEES PAID  
U.S. DEPARTMENT OF COMMERCE  
COM-209



WEEKLY SUPPLEMENT

SURVEY OF CURRENT BUSINESS