

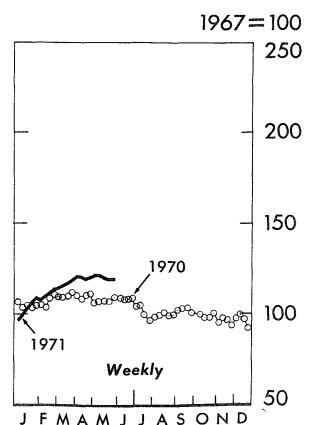
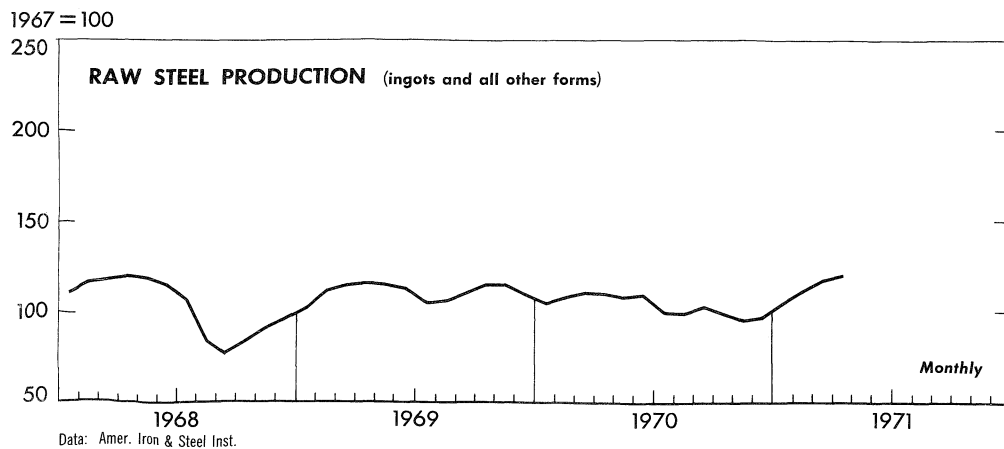
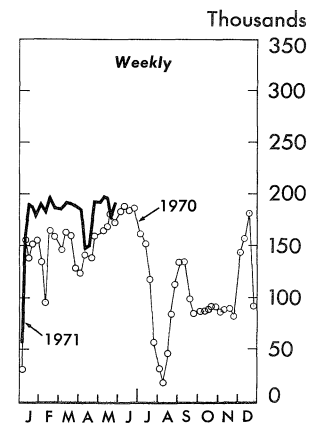
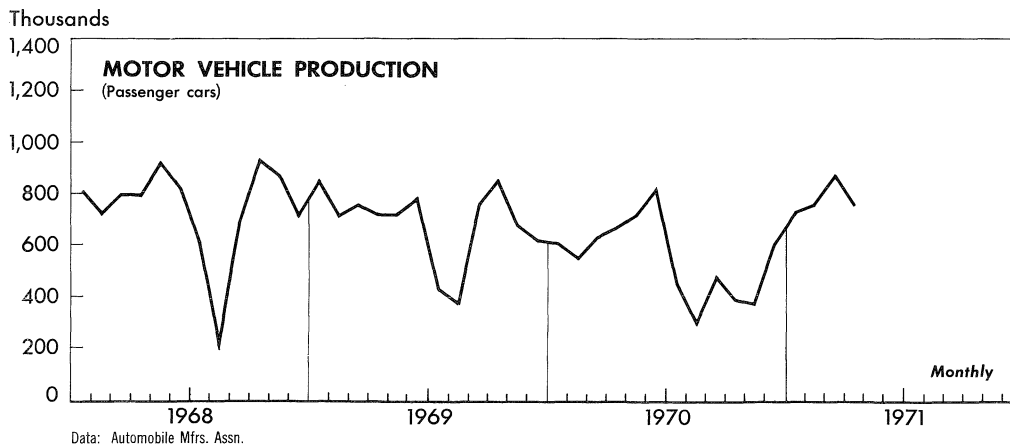
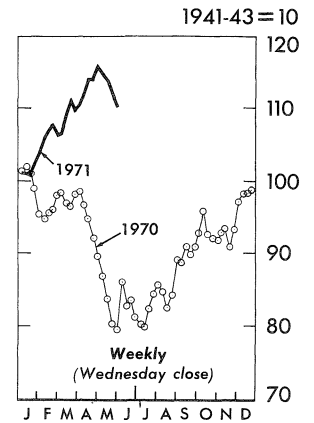
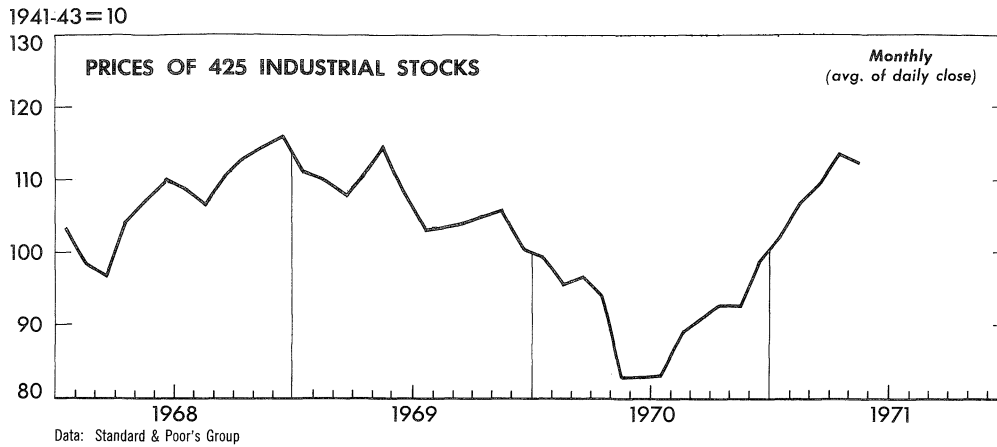
BUSINESS STATISTICS



A WEEKLY SUPPLEMENT TO THE SURVEY OF CURRENT BUSINESS*

JUNE 4,
1971

U.S. DEPARTMENT OF COMMERCE/OFFICE OF BUSINESS ECONOMICS



* Available only with subscription to the SURVEY OF CURRENT BUSINESS, this Supplement provides selected weekly and monthly data subsequent to those published in the latest monthly SURVEY

WEEKLY BUSINESS STATISTICS¹

ITEM	1970		1971			
	May 23	May 30	May 8	May 15	May 22	May 29
WHOLESALE PRICES, 22 COMMODITIES <u>2/</u>1967=100..	114.9	113.9	108.9	108.9	108.8	108.4
ALL RETAIL STORES, SALES.....mil. \$..	7,069	7,107	7,702	7,397	7,467
Nondurable goods stores.....do.....	4,788	4,697	5,294	5,008	5,010
INITIAL UNEMPLOYMENT CLAIMS, State programs.....thous..	231	224	260	230	232
INSURED UNEMPLOYMENT, all programs.....do.....	1,749	1,686	2,527	2,470
State programs (50 States, D. C., and Puerto Rico).....do.....	1,639	1,579	2,078	2,032
FAILURES, INDUST. AND COMMERCIAL (Dun & Bradstreet).....number..	230	198	204	235	225
FINANCE:						
Currency in circulation <u>3/</u>mil. \$..	53,589	53,517	56,715	57,164	57,266	57,165
Federal Reserve bank credit outstanding, total <u>3/</u>do.....	63,562	62,252	68,447	68,557	69,280	68,949
Member bank reserve balances <u>3/</u>do.....	28,095	27,331	30,798	30,104	30,385	30,248
Excess reserves, estimated <u>3/</u>do.....	214	44	377	242	115	175
Assets and liabilities of large commercial banks: <u>4/</u>						
Demand deposits, adjusted.....mil. \$..	77,707	78,278	82,287	82,080	82,007
Savings deposits.....do.....	46,505	46,076	53,159	53,261	53,397
Loans and investments, gross adjusted, total.....do.....	229,496	228,086	254,269	255,324	253,551
U.S. Government obligations.....do.....	22,858	22,779	26,506	26,154	25,259
Commercial and industrial loans (gross).....do.....	78,566	77,835	81,467	81,785	81,923
Real estate loans (gross).....do.....	33,697	33,453	34,750	34,867	34,943
Bond yields, domestic corporate (Moody's) <u>3/</u>percent..	8.49	8.56	7.95	7.99	8.08	8.12
Stock prices, 500 stocks (Stand. & Poor's) <u>4/</u>1941-43=100..	73.52	72.77	103.78	102.90	101.07	99.59
Industrial, 425 stocks.....do.....	80.27	79.49	114.78	113.75	111.82	110.17
PRODUCTION:						
Bituminous coal <u>3/</u>thous. sh. tons..	1,943	2,276	2,085	2,067	1,801
Electric power, by utilities.....mil. kw.-hr..	28,318	27,851	28,755	28,617	29,200
Motor vehicles (passenger cars).....number..	180,628	172,111	197,400	196,044	176,334	191,266
Petroleum (crude) and condensate <u>3/</u>thous. bbl..	9,607	9,600	9,850	9,848	9,751
Steel, raw.....thous. sh. tons..	2,609	2,670	2,960	2,927	2,909	2,914
Index of production.....1967=100..	106.9	109.4	121.3	120.0	119.2	119.4
RAIL FREIGHT, REVENUE TON-MILES.....bil..	15.6	15.1	15.2	15.1	13.3

1/ Data do not always cover calendar weeks. 2/ Tuesday price. 3/ Daily average. 4/ Wednesday data.

MONTHLY BUSINESS STATISTICS

ITEM	1970		1971			
	Mar.	Apr.	Jan.	Feb.	Mar.	Apr.
GENERAL BUSINESS INDICATORS						
MANUFACTURERS' SHIPMENTS:						
NOT SEASONALLY ADJUSTED, TOTAL.....mil. \$..	57,173	55,646	52,943	58,523	r60,739	59,737
Durable goods industries, total <u>1/</u>do.....	31,248	30,499	28,530	31,946	r33,790	32,768
Stone, clay, and glass products.....do.....	1,464	1,471	1,377	1,471	r1,625	1,743
Primary metals.....do.....	4,994	4,724	4,606	5,022	r5,384	5,828
Fabricated metal products.....do.....	3,246	3,096	2,900	3,182	r3,284	3,229
Machinery, except electrical.....do.....	5,844	5,593	5,090	5,717	r6,134	5,775
Electrical machinery.....do.....	3,870	3,747	3,693	4,072	r4,122	3,950
Transportation equipment.....do.....	7,630	7,834	7,236	8,414	r8,961	7,955
Instruments and related products.....do.....	1,223	1,112	985	1,087	r1,099	1,094
Nondurable goods industries, total <u>1/</u>do.....	25,925	25,147	24,413	26,577	r26,949	26,969
Food and kindred products.....do.....	8,717	8,396	8,350	8,926	r9,101	8,881
Tobacco products.....do.....	430	439	436	448	463	462
Textile mill products.....do.....	1,862	1,729	1,730	1,890	r2,030	1,868
Paper and allied products.....do.....	2,430	2,347	2,328	2,479	r2,559	2,483
Chemicals and allied products.....do.....	4,392	4,310	3,907	4,371	r4,374	4,743
Petroleum and coal products.....do.....	2,085	2,118	2,237	2,317	r2,220	2,245
Rubber and plastics products.....do.....	1,618	1,519	1,373	1,544	r1,606	1,647
SEASONALLY ADJUSTED, TOTAL.....do.....	55,223	54,539	56,504	57,803	r58,578	58,463
By industry group:						
Durable goods industries, total <u>1/</u>do.....	29,757	29,633	30,545	31,352	r32,093	31,759
Stone, clay, and glass products.....do.....	1,502	1,443	1,613	1,614	r1,668	1,708
Primary metals.....do.....	4,692	4,426	4,746	4,805	r5,049	5,436
Fabricated metal products.....do.....	3,189	3,032	3,230	3,189	r3,228	3,163
Machinery, except electrical.....do.....	5,427	5,350	5,603	5,507	r5,680	5,509
Electrical machinery.....do.....	3,719	3,835	3,989	4,017	r3,963	4,062
Transportation equipment.....do.....	7,150	7,549	7,324	8,108	r8,351	7,640
Instruments and related products.....do.....	1,205	1,144	1,115	1,115	r1,082	1,128

r/ Revised. 1/ Includes data for "other industries" not shown.

2658

ITEM	1970		1971			
	Mar.	Apr.	Jan.	Feb.	Mar.	Apr.
GENERAL BUSINESS INDICATORS -- Con.						
MANUFACTURERS' SHIPMENTS (SEAS. ADJ.)--Con.						
By industry group--Con.						
Nondurable goods industries, total <u>1</u> /.....mil. \$..	25,466	24,906	25,959	26,451	r26,485	26,704
Food and kindred products.....do....	8,759	8,587	8,787	8,960	r9,141	9,081
Tobacco products.....do....	444	454	483	471	479	478
Textile mill products.....do....	1,819	1,736	1,910	1,919	r1,989	1,884
Paper and allied products.....do....	2,356	2,326	2,433	2,453	r2,481	2,461
Chemicals and allied products.....do....	4,244	4,000	4,128	4,372	r4,229	4,401
Petroleum and coal products.....do....	2,123	2,139	2,320	2,317	r2,261	2,267
Rubber and plastics products.....do....	1,551	1,441	1,474	1,531	r1,540	1,564
INVENTORIES, END OF MONTH:						
Book value (unadjusted), total.....do....	97,504	98,588	99,902	100,075	r99,950	100,335
Durable goods industries, total.....do....	64,599	65,285	65,423	65,643	r65,706	66,123
Nondurable goods industries, total.....do....	32,905	33,303	34,479	34,432	r34,244	34,212
Book value (seasonally adjusted), total.....do....	96,982	97,791	99,801	99,520	r99,416	99,542
By industry group:						
Durable goods industries, total <u>1</u> /.....do....	64,263	64,689	65,610	65,347	r65,352	65,536
Stone, clay, and glass products.....do....	2,535	2,574	2,663	2,653	r2,652	2,649
Primary metals.....do....	8,254	8,544	9,159	9,210	r9,234	9,135
Fabricated metal products.....do....	6,745	6,702	6,990	6,969	r7,033	7,036
Machinery, except electrical.....do....	13,447	13,572	14,013	14,011	r13,968	13,966
Electrical machinery.....do....	9,551	9,587	9,468	9,431	r9,487	9,519
Transportation equipment.....do....	15,515	15,442	14,913	14,692	r14,629	14,784
Instruments and related products.....do....	2,583	2,637	2,648	2,621	r2,619	2,612
Nondurable goods industries, total <u>1</u> /.....do....	32,719	33,102	34,191	34,173	r34,064	34,006
Food and kindred products.....do....	7,487	7,579	7,863	7,857	r7,829	7,797
Tobacco products.....do....	2,159	2,165	2,187	2,239	r2,195	2,192
Textile mill products.....do....	3,423	3,427	3,245	3,262	r3,281	3,250
Paper and allied products.....do....	2,686	2,713	2,821	2,791	2,766	2,791
Chemicals and allied products.....do....	6,640	6,704	7,147	7,173	r7,166	7,094
Petroleum and coal products.....do....	2,345	2,374	2,529	2,490	r2,453	2,443
Rubber and plastics products.....do....	1,958	1,948	1,940	1,940	r1,957	1,959
NEW ORDERS, NET (NOT SEASONALLY ADJUSTED), TOTAL.....do....						
Durable goods industries, total.....do....	56,352	54,802	54,508	59,630	r60,630	58,698
Nondurable goods industries, total.....do....	30,412	29,594	30,090	33,027	r33,620	31,743
Nondurable goods industries, total.....do....	25,940	25,208	24,418	26,603	r27,010	26,955
NEW ORDERS, NET (SEASONALLY ADJUSTED), TOTAL.....do....						
By industry group:	54,339	53,374	57,377	58,288	r58,326	57,244
Durable goods industries, total <u>1</u> /.....do....	28,861	28,449	31,405	31,867	r31,773	30,591
Primary metals.....do....	4,547	4,739	5,428	5,100	r5,184	4,995
Fabricated metal products.....do....	3,238	2,943	2,916	3,075	r3,231	3,119
Machinery, except electrical.....do....	5,149	5,287	5,419	5,462	r5,703	5,322
Electrical machinery.....do....	3,726	3,705	3,985	3,958	r3,945	3,987
Transportation equipment.....do....	6,660	6,386	7,872	8,599	r7,864	7,179
Nondurable goods industries, total.....do....	25,478	24,925	25,972	26,421	r26,553	26,653
Industries with unfilled orders.....do....	6,900	6,869	7,154	7,175	r7,360	7,280
Industries without unfilled orders.....do....	18,578	18,056	18,818	19,246	r19,193	19,373
UNFILLED ORDERS, END OF MONTH (UNADJ.), TOTAL.....do....						
Durable goods industries, total.....do....	86,944	86,100	83,437	84,540	r84,435	83,400
Nondurable goods industries with unfilled orders.....do....	83,991	83,086	80,316	81,394	r81,226	80,208
Nondurable goods industries with unfilled orders.....do....	2,953	3,014	3,121	3,146	r3,209	3,192
UNFILLED ORDERS, END OF MONTH (SEAS. ADJ.), TOTAL.....do....						
By industry group:	86,487	85,322	83,511	83,994	r83,748	82,526
Durable goods industries, total <u>1</u> /.....do....	83,521	82,337	80,330	80,843	r80,526	79,357
Primary metals.....do....	6,660	6,973	7,597	7,894	r8,028	7,589
Fabricated metal products.....do....	10,433	10,344	10,774	10,661	r10,664	10,620
Machinery, except electrical.....do....	16,777	16,714	15,656	15,610	r15,633	15,447
Electrical machinery.....do....	13,660	13,530	13,144	13,084	r13,067	12,992
Transportation equipment.....do....	30,436	29,273	27,981	28,471	r27,985	27,522
Nondurable goods industries with unfilled orders.....do....	2,966	2,985	3,181	3,151	r3,222	3,169
LABOR FORCE, EMPLOYMENT, AND EARNINGS						
HELP-WANTED ADVERTISING, SEASONALLY ADJUSTED INDEX....1967=100..	103	100	75	77	78	p78
FINANCE						
AGRICULTURAL LOANS AND DISCOUNTS OUTSTANDING OF AGENCIES SUPERVISED BY THE FARM CREDIT ADM.:						
Total, end of month.....mil. \$..	13,826	14,032	14,957	15,206	15,492	15,718
Farm mortgage loans: Federal land banks.....do....	6,833	6,891	7,210	7,258	7,347	7,426
Loans to cooperatives.....do....	1,840	1,828	2,119	2,164	2,153	2,113
Other loans and discounts.....do....	5,154	5,313	5,628	5,784	5,993	6,179
FOREIGN TRADE						
EXPORTS (MDSE.), INCL. REEXPORTS, TOTAL.....mil. \$..	3,619.7	3,646.3	3,532.3	3,558.3	4,156.0	3,873.0
Excl. Department of Defense Shipments.....do....	3,577.5	3,596.9	3,481.8	3,527.0	4,107.9	3,829.0
Seasonally adjusted.....do....	3,375.6	3,409.1	3,735.4	3,689.7	3,814.6	3,543.1
GENERAL IMPORTS, TOTAL.....do....	3,380.7	3,391.1	3,422.0	3,193.8	3,911.5	3,897.6
Seasonally adjusted.....do....	3,217.9	3,263.2	3,686.3	3,553.4	3,569.2	3,757.8

2658
 Revised. p/ Preliminary. 1/ Includes data for "other industries" not shown.

ITEM	1970		1971			
	Mar.	Apr.	Jan.	Feb.	Mar.	Apr.
METALS AND MANUFACTURES						
STEEL MILL PRODUCTS, INVENTORIES, END OF MONTH:						
Consumers' (manufacturers only).....mil. sh. tons..	9.9	9.1	9.6	9.7	10.5	11.7
Service centers (warehouses).....do.....	6.1	6.3	6.9	r6.8	6.7
Producing mills:						
In process (ingots, semifinished, etc.).....do.....	11.5	11.7	13.5	12.9	r12.3	11.8
Finished (sheets, plates, bars, pipe, etc.).....do.....	9.4	10.3	10.5	11.0	11.3	11.0
Aluminum products:						
Ingot and mill products (net shipments).....mil. lb..	r935.6	856.6	770.6	r775.4	960.5
Mill products, total.....do.....	r684.3	631.9	584.6	r578.5	749.0
Plate and sheet.....do.....	348.9	318.2	292.2	r280.1	398.7
MACHINE TOOLS:						
Metal cutting type tools:						
Orders, new (net), total.....mil. \$..	75.95	59.20	36.75	39.00	r43.00	42.40
Domestic.....do.....	60.00	46.30	27.30	31.70	r36.50	36.75
Shipments, total.....do.....	98.20	83.05	57.65	59.40	r64.85	72.35
Domestic.....do.....	82.50	69.15	43.50	47.65	r51.75	60.70
Order backlog, end of month.....do.....	764.1	740.2	449.8	429.4	r407.6	377.7
Metal forming type tools:						
Orders, new (net), total.....do.....	20.35	27.20	17.45	20.10	r25.25	13.90
Domestic.....do.....	17.00	25.55	15.90	16.95	r22.65	13.15
Shipments, total.....do.....	40.95	34.75	31.15	31.50	r30.25	26.45
Domestic.....do.....	38.20	32.20	29.00	28.30	r28.30	24.85
Order backlog, end of month.....do.....	376.7	369.1	221.1	209.7	r204.7	192.2
PULP, PAPER, AND PAPER PRODUCTS						
PULPWOOD:						
Receipts.....thous. cords (128 cu. ft.)..	5,813	5,611	5,073	4,984	5,318
Consumption.....do.....	5,593	5,536	5,487	5,207	5,484
Stocks, end of month.....do.....	4,715	4,811	5,589	5,406	5,249
Waste paper:						
Consumption.....thous. sh. tons..	868	872	814	r780	893
Stocks, end of month.....do.....	569	563	528	r507	502
PAPER AND BOARD:						
Production (Bu. of the Census):						
All grades, total, unadjusted.....do.....	r4,556	4,624	4,521	r4,253	4,679
Paper.....do.....	r2,071	2,053	2,005	r1,865	2,023
Paperboard.....do.....	2,142	2,198	2,149	r2,018	2,227
Wet-machine board.....do.....	11	14	14	r14	17
Construction paper and board.....do.....	332	359	353	r356	412

r/ Revised.
USCOMM--DC--2658

UNITED STATES
GOVERNMENT PRINTING OFFICE
DIVISION OF PUBLIC DOCUMENTS
WASHINGTON, D.C. 20402

POSTAGE AND FEES PAID
U.S. GOVERNMENT PRINTING OFFICE

OFFICIAL BUSINESS

First-Class Mail

WEEKLY SUPPLEMENT

SURVEY OF CURRENT BUSINESS