



SURVEY OF CURRENT BUSINESS

WEEKLY SUPPLEMENT



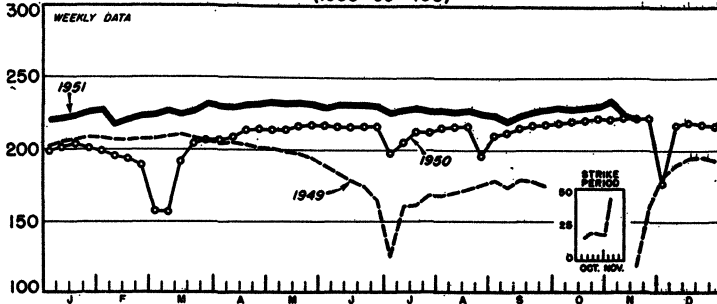
UNITED STATES DEPARTMENT OF COMMERCE
BUREAU OF FOREIGN AND DOMESTIC COMMERCE

AVAILABLE ONLY WITH SUBSCRIPTION TO SURVEY OF CURRENT BUSINESS

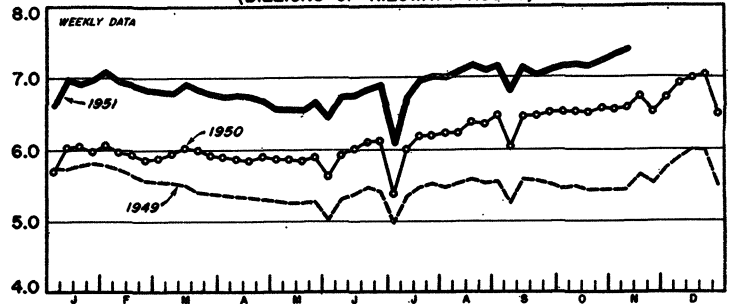
NOVEMBER 23, 1951

SELECTED BUSINESS INDICATORS

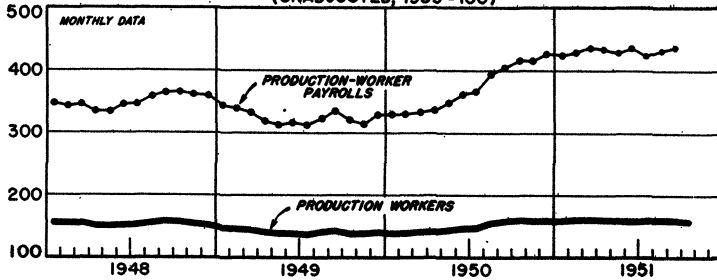
STEEL PRODUCTION (Ingots and Steel for Castings)
(1935-39 = 100)



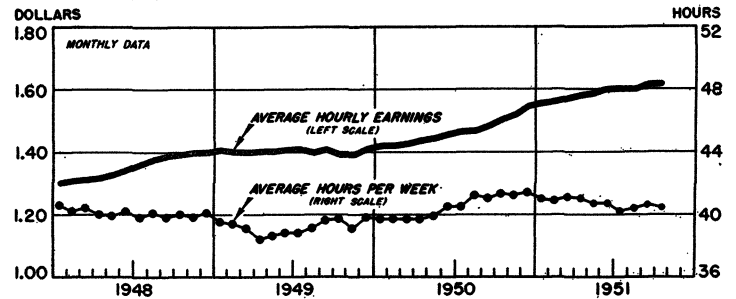
ELECTRIC-POWER PRODUCTION BY UTILITIES
(BILLIONS OF KILOWATT-HOURS)



MANUFACTURING EMPLOYMENT AND PAYROLLS
(UNADJUSTED, 1939 = 100)



HOURLY EARNINGS AND HOURS IN MANUFACTURING



WEEKLY BUSINESS STATISTICS¹

ITEM	1950				1951		
	Nov. 11	Nov. 18	Oct. 20	Oct. 27	Nov. 3	Nov. 10	Nov. 17
Commodity prices, wholesale:							
All commodities.....1926=100..	170.4	171.8	177.7	177.1	177.0	177.2	177.2
Farm products.....do....	181.2	183.1	195.2	192.3	192.1	193.3	194.5
Food.....do....	172.5	175.2	191.6	190.1	189.9	190.1	189.9
All other.....do....	163.0	163.9	165.1	165.1	165.1	165.2	165.3
28 commodities 2/.....August 1939=100..	342.5	346.6	329.7	328.8	326.7	328.9	328.8
Cotton, middling, 15/16", 10 markets 3/.....dol. per lb..	.412	.429	.367	.371	.385	.410	.420
Wheat, No. 2, hard winter (Kansas City) 3/.....dol. per bu..	2.22	2.21	2.47	2.48	2.49	2.51	2.54
Department store sales.....1935-39=100..	342	368	334	327	349	364
Insured unemployment, total.....thous.	889	887	872	874
State programs.....do....	855	850	851	853
Finance:							
Currency in circulation 3/.....mil. of dol..	27,370	27,322	28,407	28,334	28,446	28,550	28,580
Federal Reserve bank credit, total.....do....	19,853	20,171	25,117	24,841	24,427	24,595	24,602
Member bank reserve balances.....do....	16,625	17,054	20,068	19,833	19,557	19,667	19,850
Excess reserves, estimated.....do....	719	1,010	1,199	755	565	758	973
Federal Reserve reporting member banks in leading cities:							
Bank debits, total.....mil. of dol..	21,295	26,450	25,680	26,568	27,491	24,613
New York City.....do....	7,895	10,619	9,514	9,927	10,933	9,127	8,698
Deposits, demand, adjusted.....do....	49,230	49,257	51,323	52,251	52,124	52,162
Loans and investments, total.....do....	69,373	69,414	71,508	72,606	72,648	72,340
U. S. Government obligations.....do....	33,392	33,349	30,976	31,940	31,926	31,596
Commercial, industrial, and agr. loans (gross).....do....	16,710	16,919	20,489	20,472	20,571	20,667
Failures, industrial and commercial.....number..	135	170	157	155	143	150	109
Bond yields, domestic corporate (Moody's) 3/.....percent..	2.88	2.87	3.12	3.15	3.18	3.19	3.19
Stocks prices, 416 stocks (Standard and Poor's).....1935-39=100..	154.1	157.1	187.5	182.0	180.2	176.6	179.4
Industrials, 365 stocks.....do....	166.6	169.9	205.2	198.7	196.6	192.1	195.4
Production:							
Bituminous coal 3/.....thous. of short tons..	1,858	2,001	1,893	1,928	1,877	1,900
Electric power, by utilities.....mil. of kw.-hr..	6,574	6,728	7,149	7,234	7,319	7,396
Motor vehicles (Ward's).....number..	153,695	118,404	114,347	114,579	111,735	109,697	112,176
Petroleum, crude 3/.....thous. of bbl..	5,837	5,809	6,271	6,257	6,205	6,119
Steel 4/.....1935-39=100..	222.5	221.9	228.6	230.4	234.0	226.2	226.4
Freight carloadings, total.....thous. of cars..	840	837	887	864	838	791
Miscellaneous.....do....	404	402	428	414	407	382

¹ Data do not always cover calendar weeks. 2/ Thursday prices. 3/ Daily averages. 4/ Week ending November 24, 1951.

MONTHLY BUSINESS STATISTICS

Earlier data are available in monthly issues of the Survey and the 1951 Statistical Supplement	1950		1951			
	September	October	July	August	September	October
CONSTRUCTION AND REAL ESTATE						
Contract awards (Engineering News-Record):						
Engineering construction, value 1/.....thous. of dol..	959,530	950,526	1,378,640	1,145,715	917,158	1,026,973
Highway concrete pavement contract awards: 1/						
Total.....thous. of sq. yd..	4,114	3,605	9,248	4,508	4,342	2,856
Airports.....do.....	477	50	4,335	714	458	275
Roads.....do.....	1,333	1,634	2,840	1,436	1,681	803
Streets and alleys.....do.....	2,304	1,920	2,073	2,358	2,202	1,777
Construction cost indexes (Engineering News-Record): 2/						
Building.....1913=100..	396.2	388.9	400.1	400.5	403.4	404.5
Construction.....do.....	534.4	527.9	542.8	543.2	546.5	547.2
DOMESTIC TRADE						
Mail-order and store sales, total, 2 companies..thous. of dol..	357,438	335,351	273,067	328,568	338,278	374,319
Montgomery Ward & Co.....do.....	113,430	113,037	79,657	98,508	100,873	117,371
Sears, Roebuck and Co.....do.....	244,008	222,314	193,410	230,060	237,405	256,949
EMPLOYMENT AND WAGES						
Employees in nonagricultural establishments:						
Total, unadjusted.....thousands..	45,684	45,898	r46,432	r46,679	r46,887	p46,819
Manufacturing.....do.....	15,685	15,827	r15,813	r15,980	r16,004	p15,926
Mining.....do.....	946	939	r906	r925	r917	p913
Contract construction.....do.....	2,626	2,631	r2,754	r2,799	r2,752	p2,738
Transportation and public utilities.....do.....	4,139	4,132	r4,176	r4,187	r4,177	p4,156
Trade.....do.....	9,641	9,752	r9,667	r9,637	r9,769	p9,894
Finance.....do.....	1,827	1,821	r1,908	r1,912	r1,891	p1,890
Service.....do.....	4,816	4,757	r4,852	r4,839	r4,832	p4,770
Government.....do.....	6,004	6,039	6,356	6,400	6,545	p6,532
Production workers in manufacturing industries, total..do.....	13,016	13,133	r12,885	r13,055	r13,070	p12,983
Durable-goods industries.....do.....	7,013	7,186	r7,226	r7,252	r7,275	p7,286
Ordnance and accessories.....do.....	22	22	r38	r40	r42	p44
Lumber and wood products (except furniture).....do.....	790	785	r748	r751	r743	p738
Furniture and fixtures.....do.....	327	329	284	r284	r285	p289
Stone, clay, and glass products.....do.....	458	471	r478	r481	r482	p479
Primary metal industries.....do.....	1,105	1,117	1,155	r1,165	r1,159	p1,154
Fabricated metal products (except ordnance, machinery, and transportation equipment).....thousands..	837	850	r813	r816	r811	p808
Machinery (except electrical).....do.....	1,050	1,104	r1,235	r1,211	r1,219	p1,243
Electrical machinery.....do.....	673	710	r684	r695	r709	p718
Transportation equipment.....do.....	1,134	1,157	r1,187	r1,197	r1,210	p1,193
Instruments and related products.....do.....	199	205	221	223	r224	p227
Miscellaneous manufacturing industries.....do.....	418	436	r383	339	r391	p393
Non-durable-goods industries.....do.....	6,003	5,947	r5,659	r5,803	r5,795	p5,697
Food and kindred products.....do.....	1,350	1,260	r1,225	r1,307	r1,317	p1,249
Tobacco manufactures.....do.....	89	89	r75	r84	r69	p88
Textile-mill products.....do.....	1,255	1,264	1,167	1,153	r1,137	p1,132
Apparel and other finished textile products.....do.....	1,099	1,100	r990	r1,047	r1,036	p1,014
Paper and allied products.....do.....	418	421	418	r419	r417	p412
Printing, publishing, and allied industries.....do.....	510	514	r507	r510	r515	p519
Chemicals and allied products.....do.....	506	523	r526	r530	r542	p551
Products of petroleum and coal.....do.....	189	190	198	198	197	p199
Rubber products.....do.....	215	219	r217	219	r218	p212
Leather and leather products.....do.....	372	367	336	342	327	p321
Hours and earnings:						
Average weekly hours per worker, all manufacturing..hours..	41.0	41.3	40.2	40.4	r40.6	p40.4
Durable-goods industries.....do.....	41.7	42.1	r40.9	41.4	r41.6	p41.6
Ordnance and accessories.....do.....	43.1	43.2	43.1	43.2	r44.1	p43.8
Lumber and wood products (except furniture).....do.....	41.2	41.9	39.8	40.8	r40.4	p41.2
Furniture and fixtures.....do.....	42.6	42.6	r39.7	r40.7	r41.2	p41.8
Stone, clay, and glass products.....do.....	41.5	42.5	r41.4	41.2	r41.3	p41.3
Primary metal industries.....do.....	41.4	41.9	r41.1	41.3	r41.2	p41.3
Fabricated metal products (except ordnance, machinery, and transportation equipment).....hours..	42.1	42.3	41.0	r41.4	r41.9	p41.9
Machinery (except electrical).....do.....	42.4	42.9	r43.0	43.1	r43.3	p43.1
Electrical machinery.....do.....	41.4	42.1	r40.4	r40.9	r41.6	p41.7
Transportation equipment.....do.....	40.9	41.0	r39.9	40.8	r41.2	p40.8
Instruments and related products.....do.....	42.5	42.5	r41.8	r42.0	r42.4	p42.4
Miscellaneous manufacturing industries.....do.....	42.1	42.3	r39.9	40.0	r40.5	p40.5
Non-durable-goods industries.....do.....	40.1	40.3	39.3	39.1	r39.4	p38.8
Food and kindred products.....do.....	42.0	41.6	r42.2	r42.1	r42.6	p41.8
Tobacco manufactures.....do.....	39.2	38.3	r37.6	r38.3	r39.4	p39.2
Textile-mill products.....do.....	40.6	40.6	r37.7	r36.6	r36.9	p37.2
Apparel and other finished textile products.....do.....	35.7	37.3	35.4	135.8	r35.7	p34.3
Paper and allied products.....do.....	44.0	44.0	r42.8	r42.7	r42.8	p42.5
Printing, publishing, and allied industries.....do.....	39.2	39.0	38.6	r38.7	39.3	p38.6
Chemicals and allied products.....do.....	41.8	42.0	41.6	41.4	r41.7	p41.8
Products of petroleum and coal.....do.....	41.7	41.6	41.8	40.8	r41.5	p41.1
Rubber products.....do.....	41.9	41.9	r41.0	r40.9	r41.0
Leather and leather products.....do.....	38.1	37.8	37.1	36.5	r35.9	p34.8
Average weekly earnings, all manufacturing.....dollars..	60.64	61.99	r64.24	r64.52	r65.45	p65.17
Durable-goods industries.....do.....	65.14	66.39	r68.79	r69.68	r70.84	p70.84
Ordnance and accessories.....do.....	67.41	68.64	r73.10	r72.40	r76.03	p76.39
Lumber and wood products (except furniture).....do.....	57.84	58.83	57.43	r60.14	r60.56	p61.96

Digitized by FRASER. p/ Preliminary. 1/ Data for August 1951 are for 5 weeks; other months, 4 weeks. 2/ Data reported at the beginning of each month are shown here for the previous month.

MONTHLY BUSINESS STATISTICS—Continued

Earlier data are available in monthly issues of the Survey and the 1951 Statistical Supplement

	1950				1951	
	September	October	July	August	September	October
EMPLOYMENT AND WAGES - Continued						
Hours and earnings - Continued						
Average weekly earnings - Continued						
Durable-goods industries - Continued						
Furniture and fixtures.....dollars..	55.42	56.27	r55.74	r57.31	r58.46	p59.31
Stone, clay, and glass products.....do....	60.88	63.11	r65.04	64.23	r65.13	p64.88
Primary metal industries.....do....	69.10	69.81	r74.76	74.59	r75.56	p74.71
Fabricated metal products 1/.....do....	65.72	66.66	r67.98	r68.52	r70.10	p70.43
Machinery (except electrical).....do....	68.94	71.00	r75.42	r76.03	r77.29	p77.41
Electrical machinery.....do....	61.48	64.12	r66.13	r66.59	r68.35	p69.06
Transportation equipment.....do....	72.39	73.02	r74.33	r76.34	r77.62	p76.91
Instruments and related products.....do....	63.58	64.77	r68.18	r68.67	r70.13	p70.30
Miscellaneous manufacturing industries.....do....	56.04	56.98	r56.46	r56.60	r57.51	p57.75
Nondurable-goods industries.....do....	55.30	56.58	r58.48	r57.95	r58.75	p57.85
Food and kindred products.....do....	56.36	56.83	r61.65	r61.34	r61.94	p61.45
Tobacco manufactures.....do....	42.02	41.21	r44.03	r43.82	r44.60	p44.77
Textile-mill products.....do....	49.98	52.58	r49.58	r47.98	r48.89	p49.40
Apparel and other finished textile products.....do....	43.09	45.51	r45.10	r46.15	r46.05	p43.15
Paper and allied products.....do....	63.10	63.27	r65.44	r64.82	r65.40	p65.24
Printing, publishing, and allied industries.....do....	74.48	74.22	r75.50	r75.58	r77.85	p76.12
Chemicals and allied products.....do....	64.16	64.55	r69.01	r68.06	r68.39	p68.13
Products of petroleum and coal.....do....	76.77	77.71	r84.06	r80.95	r83.21	p82.04
Rubber products.....do....	66.58	66.29	r70.81	r69.69	r70.36
Leather and leather products.....do....	45.72	46.04	47.12	46.43	r45.99	p44.93
Average hourly earnings, all manufacturing.....do....	1.479	1.501	r1.598	r1.597	1.612	p1.613
Durable-goods industries.....do....	1.562	1.577	r1.682	r1.683	r1.703	p1.703
Ordnance and accessories.....do....	1.564	1.589	r1.696	r1.676	r1.724	p1.744
Lumber and wood products (except furniture).....do....	1.404	1.404	1.443	1.474	r1.499	p1.504
Furniture and fixtures.....do....	1.301	1.321	r1.404	r1.408	r1.419	p1.419
Stone, clay, and glass products.....do....	1.467	1.485	1.571	1.559	r1.577	p1.571
Primary metal industries.....do....	1.669	1.666	1.819	1.806	r1.834	p1.809
Fabricated metal products 1/.....do....	1.561	1.576	1.658	1.655	r1.673	p1.681
Machinery (except electrical).....do....	1.626	1.655	r1.754	r1.764	r1.785	p1.796
Electrical machinery.....do....	1.485	1.523	r1.637	r1.628	r1.643	p1.656
Transportation equipment.....do....	1.770	1.771	r1.863	r1.871	r1.884	p1.885
Instruments and related products.....do....	1.496	1.524	r1.631	r1.635	r1.654	p1.658
Miscellaneous manufacturing industries.....do....	1.331	1.347	r1.415	r1.415	r1.420	p1.426
Nondurable-goods industries.....do....	1.379	1.404	r1.488	r1.482	r1.491	p1.491
Food and kindred products.....do....	1.342	1.366	1.461	r1.457	r1.454	p1.470
Tobacco manufactures.....do....	1.072	1.076	r1.171	r1.144	r1.132	p1.142
Textile-mill products.....do....	1.228	1.295	1.315	r1.311	r1.325	p1.328
Apparel and other finished textile products.....do....	1.207	1.220	r1.274	r1.289	r1.290	p1.258
Paper and allied products.....do....	1.434	1.438	r1.529	r1.518	r1.528	p1.535
Printing, publishing, and allied industries.....do....	1.900	1.903	r1.956	r1.953	r1.981	p1.972
Chemicals and allied products.....do....	1.535	1.537	r1.659	r1.644	r1.640	p1.630
Products of petroleum and coal.....do....	1.841	1.868	r2.011	r1.984	r2.005	p1.996
Rubber products.....do....	1.589	1.582	r1.727	r1.704	r1.716
Leather and leather products.....do....	1.200	1.218	1.270	1.272	r1.281	p1.291
Manufacturing production-worker employment index:						
Unadjusted (U. S. Department of Labor).....1939=100..	158.9	160.3	r157.3	r159.4	r159.5	p158.5
Adjusted (Federal Reserve).....do....	156.0	157.7	r160.0	r158.1	r156.8	p155.9
Manufacturing production-worker payroll index, unadjusted						
(U. S. Department of Labor).....1939=100..	403.2	415.8	r422.8	r430.2	436.9
FINANCE						
Bank debts, total (141 centers).....mil. of dol..	110,107	111,974	110,756	111,190	107,504	123,671
New York City.....do....	44,910	43,837	43,224	41,363	41,145	47,971
Outside New York City.....do....	65,197	68,137	67,532	69,827	66,359	75,700
Federal Government finance:						
Receipts, Treasury, total.....do....	4,842	2,300	2,833	4,165	6,524	2,708
Receipts, net.....do....	4,605	2,056	2,571	3,594	6,209	2,635
Customs.....do....	47	57	48	50	42	52
Income and employment taxes.....do....	3,947	1,291	1,886	3,131	5,691	1,653
Miscellaneous internal revenue.....do....	775	808	722	806	707	885
Expenditures, total.....do....	3,520	3,170	4,739	5,087	5,163	5,483
Interest on debt.....do....	646	229	232	222	580	497
National defense and related activities.....do....	1,037	1,338	2,930	3,040	2,628	3,165
FOREIGN TRADE						
Exports, including reexports, total 2/.....mil. of dol..	911	906	r1,189	r1,267	1,231
Exports of U. S. merchandise, total 2/.....do....	898	894	r1,178	r1,257	1,220
By economic classes:						
Crude materials.....thous. of dol..	175,624	164,332	128,030	r151,830	205,611
Crude foodstuffs.....do....	60,246	65,980	r105,050	r118,207	106,297
Manufactured foodstuffs and beverages.....do....	56,099	53,174	r72,231	r78,316	65,570
Seminufactures.....do....	r102,991	r97,786	r154,995	r149,807	145,363
Finished manufactures.....do....	r502,936	r512,708	r717,956	r759,114	697,156
By principal commodities:						
Agricultural products, total.....do....	252,815	233,650	r251,015	r276,286	305,683
Cotton, unmanufactured.....do....	75,730	60,389	32,663	32,199	70,817
Grains and preparations.....do....	72,426	72,004	r111,027	r128,156	115,935
Nonagricultural products, total.....do....	r645,082	660,330	r927,249	r980,988	914,311
Automobiles, parts, and accessories 2/.....do....	62,705	59,169	r101,202	r101,756	98,936
Chemicals and related products 2/.....do....	65,713	61,418	r69,259	91,503	85,327

Revised R. Preliminary. 1/ Except ordnance, machinery, and transportation equipment. 2/ See note on corresponding item in the November 1951 Survey.

MONTHLY BUSINESS STATISTICS—Continued

Earlier data are available in monthly issues of the Survey and the 1951 Statistical Supplement	1950		1951			
	September	October	July	August	September	October
FOREIGN TRADE - Continued						
Exports of U. S. merchandise - Continued						
By principal commodities - Continued						
Nonagricultural products - Continued						
Iron and steel-mill products.....thous. of dol..	38,021	36,356	48,563	48,939	54,803
Machinery $\frac{1}{2}$do.....	197,641	205,268	305,938	r297,653	254,127
Petroleum and products.....do.....	45,665	47,304	r76,389	85,444	83,879
Textiles and manufactures.....do.....	45,133	51,414	61,305	63,192	62,354
General imp'rts, total.....do.....	r859,000	r922,100	r893,900	r880,100	718,100
Imports for consumption, total.....do.....	r825,703	r914,333	r886,427	891,993	742,632
By economic classes:						
Crude materials.....do.....	r223,736	r255,125	r292,306	288,785	236,512
Crude foodstuffs.....do.....	r180,277	r172,779	r136,598	143,849	122,075
Manufactured foodstuffs and beverages.....do.....	r88,144	r87,592	92,468	88,352	75,186
Semimanufactures.....do.....	r197,846	r239,845	r199,400	204,559	168,335
Finished manufactures.....do.....	135,699	158,992	165,655	166,449	140,524
By principal commodities:						
Agricultural products, total.....do.....	r391,522	r406,421	r404,913	412,198	331,425
Coffee.....do.....	129,046	112,905	86,897	87,818	80,560
Rubber, crude, including guayule.....do.....	41,109	58,481	87,430	76,436	59,537
Sugar.....do.....	40,156	35,033	38,655	38,043	29,106
Wool and mohair, unmanufactured.....do.....	36,818	33,452	48,099	57,619	34,131
Nonagricultural products, total.....do.....	r434,181	r507,912	r481,514	479,795	411,207
Nonferrous ores, metals, and manufactures.....do.....	68,073	88,810	67,477	78,206	58,008
Paper base stocks.....do.....	23,366	26,335	41,727	35,240	31,168
Newsprint.....do.....	38,996	42,000	42,994	47,695	38,758
Petroleum and products.....do.....	49,889	55,666	48,447	44,881	42,911
FOODSTUFFS						
Livestock slaughter (Federally inspected):						
Calves.....thous. of animals..	488	515	408	422	373	500
Cattle.....do.....	1,196	1,169	920	1,064	956	1,140
Hogs.....do.....	4,137	5,102	3,826	4,236	4,398	5,651
Sheep and lambs.....do.....	1,063	1,081	863	889	827	1,084
Stocks, cold storage, end of month:						
Apples, fresh.....thous. of bu..	7,321	34,451	294	293	r7,684	26,271
Butter, creamery.....thous. of lb..	234,111	208,228	104,405	116,790	r113,501	94,812
Cheese, total.....do.....	326,907	310,240	262,540	269,564	r272,053	257,886
Fruits, frozen.....do.....	466,135	497,878	573,708	610,299	r599,766	573,465
Vegetables, frozen.....do.....	430,576	457,573	369,311	445,724	r515,766	549,019
Eggs, shell.....thous. of cases..	1,558	502	2,270	1,615	r958	513
Eggs, frozen.....thous. of lb..	133,002	104,378	190,818	176,273	r151,293	119,885
Meats, total.....do.....	468,521	456,868	747,763	639,853	r550,037	527,779
Beef and veal.....do.....	89,485	103,894	94,900	101,377	r102,301	127,390
Lamb and mutton.....do.....	6,486	7,994	6,211	6,407	r7,227	9,807
Pork, total.....do.....	298,785	271,886	542,991	436,275	r354,331	311,570
Fresh and cured.....do.....	240,544	219,758	496,171	401,573	r325,959	281,974
Lard.....do.....	58,241	52,128	46,820	34,702	r28,372	29,596
Poultry.....do.....	140,352	217,999	106,692	121,493	r166,242	258,810
METALS AND MANUFACTURES						
Steel products, net shipments, total..thous. of short tons..						
Bars, hot rolled: Carbon and alloy.....do.....	689	753	689	744	712
Reinforcing.....do.....	151	159	151	184	160
Semimanufactures.....do.....	269	307	303	322	314
Pipe and tubes.....do.....	770	740	681	785	719
Plates.....do.....	482	542	653	691	657
Rails.....do.....	154	147	146	165	139
Sheets.....do.....	1,697	1,839	1,617	1,719	1,548
Strip: Cold rolled.....do.....	159	172	128	191	162
Hot rolled.....do.....	210	228	146	185	185
Structural shapes.....do.....	355	374	397	407	386
Tin plate and terneplate.....do.....	424	388	347	430	358
Wire and wire products.....do.....	433	495	345	492	456
PAPER AND PRINTING						
Paper, excluding building paper, newsprint, and paperboard:						
Orders, new.....short tons..	852,625	870,578	r812,496	r853,755	811,000
Production.....do.....	806,044	866,740	r783,778	r894,388	821,000
Shipments.....do.....	815,574	870,994	r770,991	r895,313	811,000
Stocks, end of month.....do.....	310,663	305,900	r312,183	r311,240	320,960
Fine paper:						
Orders, new.....do.....	114,207	115,272	r108,242	r104,404	103,000
Production.....do.....	106,764	112,207	95,741	r116,142	106,000
Shipments.....do.....	111,635	113,203	r98,572	r116,298	105,000
Stocks, end of month.....do.....	69,450	68,655	r63,605	r63,450	64,450
Printing paper:						
Orders, new.....do.....	307,738	290,525	268,285	r289,600	275,000
Production.....do.....	280,203	296,292	254,382	r304,127	276,000
Shipments.....do.....	281,172	297,782	254,294	r305,053	274,000
Stocks, end of month.....do.....	115,310	113,870	113,845	r112,910	114,910
Coarse paper:						
Orders, new.....do.....	276,858	298,200	r277,783	r303,083	281,000
Production.....do.....	273,636	292,751	277,523	r303,584	283,000
Shipments.....do.....	276,705	294,692	270,980	r304,307	278,000
Stocks, end of month.....do.....	78,265	76,305	r84,993	r84,270	89,000