



SURVEY OF CURRENT BUSINESS

WEEKLY SUPPLEMENT



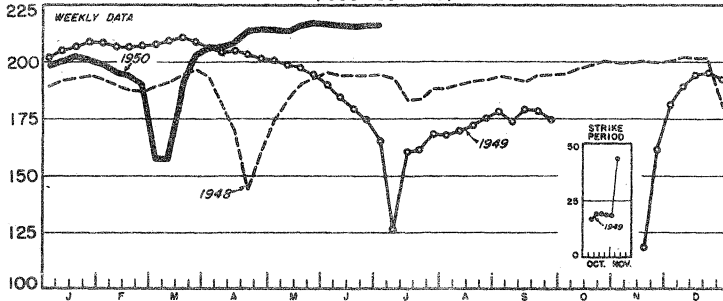
UNITED STATES DEPARTMENT OF COMMERCE
BUREAU OF FOREIGN AND DOMESTIC COMMERCE

AVAILABLE ONLY WITH SUBSCRIPTION TO SURVEY OF CURRENT BUSINESS

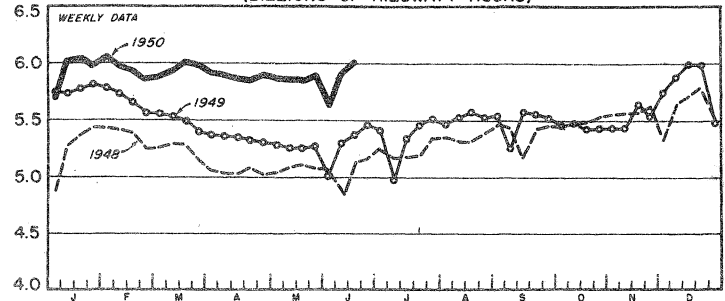
JUNE 30, 1950

SELECTED BUSINESS INDICATORS

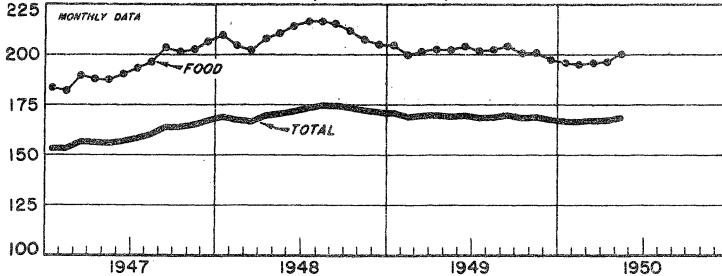
STEEL ININGOT PRODUCTION
(1935-39=100)



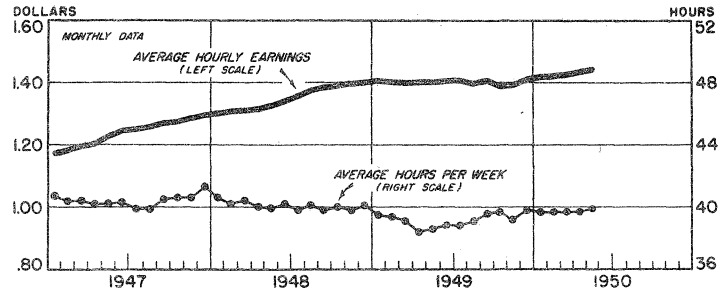
ELECTRIC POWER PRODUCTION BY UTILITIES
(BILLIONS OF KILOWATT-HOURS)



CONSUMERS' PRICES
(1935-39=100)



HOURLY EARNINGS AND HOURS IN MANUFACTURING



WEEKLY BUSINESS STATISTICS¹

ITEM	1949			1950			
	June 18	June 25	May 27	June 3	June 10	June 17	June 24
Commodity prices, wholesale:							
All commodities.....1926=100..	154.9	153.5	156.1	156.8	157.4	156.7	157.1
Farm products.....do.....	169.7	167.3	165.3	167.5	166.4	164.5	166.2
Food.....do.....	163.1	159.5	160.7	161.5	163.2	161.0	162.5
All other.....do.....	145.7	145.4	147.6	147.7	148.2	148.3	148.3
28 commodities 2/.....August 1939=100..	231.2	230.3	263.5	266.9	269.4	262.9	264.3
Cotton, middling, 15/16", 10 markets 3/.....dol. per lb..	.330	.329	.333	.337	.338	.338	.337
Wheat, No. 2, hard winter (Kansas City).....dol. per bu..	2.08	1.98	2.26	2.25	2.20	2.15	2.13
Department store sales.....1935-39=100..	285	247	282	261	302	302
Insured unemployment, total.....thous..	2,721	2,734	1,696	1,670
State programs.....do.....	2,085	2,069	1,601	1,578
Veterans' programs.....do.....	563	586	32	29
Finance:							
Currency in circulation 3/.....mil. of dol..	27,400	27,357	26,948	27,084	27,084	26,998	26,940
Federal Reserve bank credit, total.....do.....	19,911	20,113	17,683	17,935	18,143	18,270	18,261
Member bank reserve balances.....do.....	18,606	18,314	15,922	15,814	16,067	16,309	16,169
Excess reserves, estimated.....do.....	1,219	966	633	528	750	927	674
Federal Reserve reporting member banks in leading cities:							
Bank debits, total.....mil. of dol..	20,985	23,008	22,528	18,867	22,788	22,750
New York City.....do.....	8,526	9,809	9,234	7,421	9,396	9,185	9,721
Deposits, demand, adjusted.....do.....	46,844	46,319	47,380	47,533	47,519	47,942
Loans and investments, total.....do.....	62,603	62,606	66,951	67,103	66,960	67,299
U. S. Government obligations.....do.....	34,867	34,515	36,359	36,456	36,183	36,505
Commercial, industrial, and agr. loans (gross).....do.....	13,385	13,292	13,359	13,359	13,394	13,459
Failures, industrial and commercial.....number..	196	196	214	168	164	178	147
Bond yields, domestic corporate (Moody's) 3/.....percent..	3.00	3.00	2.86	2.86	2.87	2.87	2.87
Stock prices, 416 stocks (Standard and Poor's).....1935-39=100..	110.7	112.0	148.4	148.8	149.2	149.0	149.4
Industrials, 365 stocks.....do.....	115.6	117.2	157.9	158.4	159.3	158.9	159.5
Production:							
Bituminous coal 3/.....thous. of short tons..	365	1,989	1,681	1,689	1,768	1,753
Electric power, by utilities.....mil. of kw-hr..	5,373	5,466	5,894	5,632	5,921	6,012
Motor vehicles (Ward's).....number..	139,005	145,372	179,063	138,402	191,417	195,643	196,635
Petroleum, crude 3/.....thous. of bbl..	4,868	4,889	5,041	5,128	5,228	5,269
Steel 4/.....1935-39=100..	179.0	174.3	217.4	216.7	216.3	215.9	216.1
Freight carloadings, total.....thous. of cars..	649	803	781	710	796	806
Miscellaneous.....do.....	333	336	374	337	375	382

^{1/} Data do not always cover calendar weeks. ^{2/} Thursday prices. ^{3/} Daily averages. ^{4/} Week ending July 1, 216.1.

MONTHLY BUSINESS STATISTICS

Earlier data are available in monthly issues of the Survey and the 1949 Statistical Supplement	1949		1950			
	April	May	February	March	April	May
BUSINESS POPULATION						
Industrial and commercial failures:						
Failures, total.....number..	877	775	811	884	806	874
Commercial service.....do....	76	58	69	74	44	62
Construction.....do.....	68	63	73	86	76	80
Manufacturing and mining.....do....	229	202	170	116	195	197
Retail trade.....do.....	406	351	399	402	398	426
Wholesale trade.....do.....	98	101	100	116	93	109
Liabilities, total.....thous. of dol..	31,930	24,583	22,156	27,900	21,250	22,672
Commercial service.....do....	5,774	1,599	1,875	1,706	819	1,474
Construction.....do.....	1,519	1,434	1,824	2,777	1,465	2,129
Manufacturing and mining.....do....	14,523	11,182	7,905	12,241	7,980	7,470
Retail trade.....do.....	6,139	6,034	6,386	7,859	7,179	8,650
Wholesale trade.....do.....	3,975	4,334	4,166	3,317	3,807	2,949
COMMODITY PRICES						
Consumers' price index, all items.....1935-39=100..	169.7	169.2	166.5	167.0	167.3	168.6
Apparel.....do.....	192.5	191.3	184.8	185.0	185.1	185.1
Food.....do.....	202.8	202.4	194.8	196.0	196.6	200.3
Cereals and bakery products.....do....	170.3	170.1	169.0	169.0	169.3	169.6
Dairy products.....do.....	184.9	182.6	183.6	182.4	179.3	177.8
Fruits and vegetables.....do.....	218.6	220.7	199.1	195.2	200.5	206.5
Meats, poultry, and fish.....do....	234.4	232.3	221.6	227.3	227.9	239.5
Fuel, electricity, and refrigeration.....do....	137.4	135.4	140.3	140.9	141.4	138.8
Gas and electricity.....do.....	96.8	96.9	97.1	97.1	97.2	97.1
Other fuels.....do.....	187.8	182.7	193.2	194.4	195.6	189.1
Housefurnishings.....do.....	191.9	189.5	185.3	185.4	185.6	185.4
Rent.....do.....	120.3	120.4	122.8	122.9	123.1	123.5
Miscellaneous.....do.....	154.6	154.5	155.1	155.0	154.8	155.3
Wholesale prices (U. S. Department of Labor):						
Combined index.....1926=100..	156.9	155.7	152.7	152.7	152.9	155.9
Economic classes:						
Manufactured products.....do....	153.0	151.5	149.1	148.9	149.4	152.2
Raw materials.....do.....	165.8	165.9	162.4	162.8	162.5	166.3
Semimanufactured articles.....do....	153.1	149.4	144.3	144.1	143.9	145.6
Farm products.....do.....	170.5	r171.5	159.1	159.4	159.3	164.7
Grains.....do.....	163.8	159.9	161.3	165.4	169.6	172.3
Livestock and poultry.....do.....	189.0	191.5	179.9	180.3	178.0	194.6
Commodities other than farm products.....do....	153.7	152.1	151.1	151.0	151.2	153.7
Foods.....do.....	162.9	163.8	156.7	155.5	155.3	159.9
Cereal products.....do.....	145.3	145.1	144.8	145.6	145.9	146.0
Dairy products.....do.....	147.2	145.9	147.5	144.8	141.1	138.0
Fruits and vegetables.....do.....	158.1	167.3	138.2	134.9	137.6	139.2
Meats, poultry, and fish.....do....	216.0	215.2	201.6	200.0	200.6	217.1
Commodities other than farm products and foods.....do....	148.9	146.8	145.9	146.1	146.4	147.6
Building materials.....do.....	196.5	193.9	192.8	194.2	194.8	198.1
Brick and tile.....do.....	160.8	160.8	163.2	163.3	163.4	163.8
Cement.....do.....	133.7	r134.3	134.9	134.9	134.9	134.9
Lumber.....do.....	290.6	r285.2	292.1	295.9	299.4	310.8
Paint and paint materials.....do....	157.9	r157.7	139.0	138.2	136.7	136.8
Chemicals and allied products.....do....	117.7	r118.1	115.2	116.3	117.1	116.4
Chemicals.....do.....	117.2	116.9	114.7	115.4	116.4	116.5
Drugs and pharmaceutical materials.....do....	123.0	123.6	121.4	121.9	122.0	122.3
Fertilizer materials.....do.....	119.7	118.9	116.9	117.3	117.4	116.8
Oils and fats.....do.....	121.2	127.0	120.9	125.6	127.5	122.2
Fuel and lighting materials.....do....	132.0	130.1	131.3	131.5	r131.2	132.1
Electricity.....do.....	67.9	66.2	69.6	67.9
Gas.....do.....	92.3	90.9	87.4	88.3	86.8
Petroleum products.....do.....	113.3	110.7	109.4	108.6	109.5	112.6
Hides and leather products.....do....	179.9	179.2	179.0	179.6	179.4	181.0
Hides and skins.....do.....	183.4	188.2	188.2	190.4	187.2	194.1
Leather.....do.....	177.8	177.4	176.6	177.9	179.1	179.3
Shoes.....do.....	186.9	184.0	184.3	184.3	184.3	185.0
Housefurnishings.....do.....	147.0	146.2	145.2	r145.5	r145.8	146.6
Furnishings.....do.....	152.4	151.9	151.8	152.2	152.6	154.1
Furniture.....do.....	141.6	140.3	138.4	r138.6	r138.8	138.9
Metal and metal products.....do....	171.8	r168.9	168.6	168.5	168.7	169.7
Iron and steel.....do.....	166.2	165.1	168.8	169.0	r168.9	168.6
Metals, nonferrous.....do.....	156.4	138.2	128.1	127.2	128.9	136.3
Plumbing and heating equipment.....do....	154.9	r154.8	148.7	151.9	r154.7	156.4
Textile products.....do.....	142.2	140.4	138.2	137.3	136.4	136.1
Clothing.....do.....	146.4	146.0	143.1	143.5	144.2	143.8
Cotton goods.....do.....	176.2	r172.1	178.4	176.5	172.9	172.0
Hosiery and underwear.....do.....	101.2	r100.3	98.6	98.0	r97.7	97.7
Rayon.....do.....	41.8	40.8	39.9	39.9	39.9	39.9
Silk.....do.....	50.1	50.1	50.1	49.1	49.1	49.3
Woolen and worsted goods.....do....	160.9	159.7	147.2	146.3	146.1	146.2
Miscellaneous.....do.....	115.6	113.5	110.0	110.7	112.6	114.7
Automobile tires and tubes.....do....	64.6	64.5	64.3	64.3	65.0	65.8
Paper and pulp.....do.....	165.1	163.3	155.6	155.5	155.4	155.4
Wholesale prices of selected commodities:						
Coal, bituminous, mine run, composite...dol. per short ton..	8.570	8.539	8.795	8.916	1/8.756	1/8.729
Coffee, Santos, No. 4 (New York).....dol. per lb..	.261	.270	.485	.471	.473	.462
Cotton cloth, print, 64 x 60.....dol. per yd..	.138	.131	.160	.152	.140	.142

MONTHLY BUSINESS STATISTICS—Continued

3

Earlier data are available in monthly issues of the Survey and the 1949 Statistical Supplement	1949		1950			
	April	May	February	March	April	May
COMMODITY PRICES - Continued						
Wholesale prices of selected commodities - Continued						
Wheat flour, stand. patents (Minn.)...dol. per 100 lb. sack..	5.269	5.255	5.619	5.600	5.656	5.690
Hides, packer's, heavy, native steers.....dol. per lb..	.200	.213	.207	.213	.208	.220
Lumber:						
Douglas fir, dim., No. 1, com., 2"x 4"x 16'..dol. per M. bd. ft..	68.310	68.310	66.640	67.620	69.090	72.324
Southern pine, boards, No. 2, com., 1"x 6" or 8"x 12'..do....	62.001	60.380	65.618	65.986	66.176	69.342
Ponderosa pine, No. 3, common, 1" x 8".....do....	66.800	65.840	61.260	62.720	64.130	66.220
Steel, scrap, heavy, melting (Pittsburgh)...dol. per long ton..	26.600	23.250	31.625	31.600	32.875	37.000
Sugar, refined, granulated (New York).....dol. per lb..	.079	.078	.077	.076	.076	.076
EMPLOYMENT AND WAGES						
Hours and earnings (U. S. Department of Labor):						
Average weekly hours per worker, all manufacturing..hours..	38.4	38.6	39.7	39.7	39.7	p39.9
Durable-goods industries.....do....	39.0	39.0	40.1	40.2	40.8	p40.8
Nondurable-goods industries.....do....	37.6	38.1	39.3	39.2	38.5	p38.9
Average weekly earnings, all manufacturing.....dollars..	53.80	54.08	56.37	r56.49	r56.93	p57.50
Durable-goods industries.....do....	57.21	57.21	59.47	r59.74	r61.12	p61.44
Nondurable-goods industries.....do....	49.67	50.41	53.06	r53.04	r52.17	p52.90
Average hourly earnings, all manufacturing.....do....	1.401	1.401	1.420	r1.423	r1.434	p1.441
Durable-goods industries.....do....	1.467	1.467	1.483	r1.486	r1.498	p1.506
Ordnance and accessories.....do....	1.475	1.472	1.507	1.510	r1.513	p1.513
Lumber and wood products (except furniture).....do....	1.272	1.288	r1.270	r1.291	r1.310	p1.344
Furniture and fixtures.....do....	1.230	1.236	r1.254	r1.254	r1.254	p1.246
Stone, clay, and glass products.....do....	1.358	1.361	r1.389	r1.390	r1.400	p1.408
Primary metal industries.....do....	1.584	1.581	r1.603	r1.603	r1.610	p1.614
Fabricated metal products 1/.....do....	1.452	1.453	1.481	1.479	r1.486	p1.487
Machinery (except electrical).....do....	1.523	1.523	1.552	1.560	r1.569	p1.576
Electrical machinery.....do....	1.444	1.443	r1.442	r1.447	r1.450	p1.457
Transportation equipment.....do....	1.643	1.650	1.677	r1.676	r1.703	p1.689
Instruments and related products.....do....	1.387	1.388	r1.425	r1.431	r1.432	p1.437
Miscellaneous manufacturing industries.....do....	1.255	1.252	1.284	1.288	r1.289	p1.305
Nondurable-goods industries.....do....	1.321	1.323	1.350	r1.353	r1.355	p1.360
Food and kindred products.....do....	1.289	1.294	r1.328	r1.336	r1.339	p1.342
Tobacco manufactures.....do....	1.013	1.016	r1.063	r1.078	r1.090	p1.089
Textile-mill products.....do....	1.182	1.184	r1.209	r1.210	1.204	p1.203
Apparel and other finished textile products.....do....	1.149	1.125	r1.212	r1.194	r1.160	p1.160
Paper and allied products.....do....	1.327	1.330	r1.360	r1.364	r1.375	p1.370
Printing, publishing, and allied industries.....do....	1.807	1.819	r1.852	r1.870	r1.871	p1.872
Chemicals and allied products.....do....	1.415	1.430	r1.459	r1.464	r1.472	p1.490
Products of petroleum and coal.....do....	1.777	1.772	1.800	1.805	r1.810	p1.794
Rubber products.....do....	1.504	1.514	r1.528	r1.518	r1.544	p1.568
Leather and leather products.....do....	1.138	1.141	r1.157	r1.164	r1.171	p1.179
FINANCE						
Bonds:						
Average price of all listed bonds (N.Y.S.E.) 2/...dollars..	100.56	100.49	101.95	101.78	101.53	101.43
Domestic.....do....	101.01	100.93	102.38	102.20	101.94	101.84
Foreign.....do....	72.18	72.20	74.80	75.48	75.81	75.89
Value, issues listed on New York Stock Exchange: 2/						
Market value, all issues.....mil. of dol..	132,098	132,029	127,777	125,846	125,497	125,353
Domestic.....do....	130,392	130,326	126,054	124,116	123,766	123,633
Foreign.....do....	1,455	1,452	1,469	1,476	1,477	1,466
Face value, all issues.....do....	131,360	131,381	125,332	123,645	123,610	123,581
Domestic.....do....	129,094	129,120	123,119	121,440	121,411	121,400
Foreign.....do....	2,016	2,011	1,963	1,955	1,949	1,931
Stocks:						
Shares listed on New York Stock Exchange:						
Market value.....do....	66,238	64,147	78,639	79,483	82,415	85,625
Number of shares listed.....millions..	2,060	2,072	2,184	2,204	2,213	2,225
FOODSTUFFS AND TOBACCO						
Grains:						
Receipts, principal markets:						
Barley.....thous. of bu..	5,860	11,906	5,806	6,738	5,627	7,696
Corn.....do....	19,646	21,198	17,006	23,470	19,624	24,065
Oats.....do....	10,175	9,874	4,670	7,660	8,041	8,343
Rye.....do....	3,348	727	263	323	303	1,121
Wheat.....do....	27,560	49,082	17,347	19,584	17,856	22,154
Coffee, visible supply.....thous. of bags..	906	796	928	949	731	609
Sugar, U. S., deliveries and supply (raw value):						
Production.....short tons..	3/	3/	31,605	24,382	17,572
Entries from off-shore.....do....	567,829	577,439	379,389	584,423	572,778	593,854
Hawaii and Puerto Rico.....do....	236,686	156,084	119,554	148,180	243,296	241,671
Deliveries, total.....do....	539,567	r605,147	503,096	620,674	565,982	737,966
For domestic consumption.....do....	537,248	r601,365	501,508	618,495	565,226	736,490
Stocks, raw and refined, end of month.....do....	1,525,617	1,492,475	1,524,544	1,563,710	1,573,089
Tobacco, manufactured products, consumption (withdrawals):						
Cigarettes, small, tax-free.....millions..	3,568	3,172	2,178	2,146	1,974
Cigarettes, small, tax-paid.....do....	27,307	30,691	25,645	32,036	r25,829	32,350
Cigars, tax-paid.....thousands..	428,452	428,357	415,318	453,631	383,345	424,870
Manufactured tobacco and snuff, tax-paid.....thous. of lbs..	18,392	20,362	17,354	21,941	18,176	18,998

MONTHLY BUSINESS STATISTICS—Continued

Earlier data are available in monthly issues of the Survey and the 1949 Statistical Supplement	1949		1950			
	April	May	February	March	April	May
LEATHER AND PRODUCTS						
Shoes and slippers, production, total.....thous. of pairs..	37,626	35,098	39,259	r46,496	36,579
Shoes, sandals, and play shoes, exc.athletic,total...do....	34,262	31,429	36,209	r42,746	33,175
Men's.....do.....	7,790	7,283	7,982	r9,421	7,775
Youths' and boys'.....do.....	1,209	1,217	1,203	1,378	1,103
Women's.....do.....	17,537	16,149	18,709	r22,577	16,802
Misses' and children's.....do.....	4,497	3,956	5,109	r5,762	4,453
Infants' and babies'.....do.....	3,229	2,824	3,206	3,608	3,042
Slippers for housewear.....do.....	2,931	3,212	2,569	r3,198	2,942
Athletic.....do.....	216	246	247	r277	251
Other footwear.....do.....	217	211	234	275	211
METALS AND MANUFACTURES						
Pig iron, production.....thous. of short tons..	5,531	5,517	4,173	4,601	5,577	5,855
Lead, refined (primary refineries):						
Production.....short tons..	48,957	51,206	41,670	49,104	48,196	48,989
Shipments (domestic).....do.....	16,229	19,060	21,855	22,358	33,751	45,702
Stocks, end of month.....do.....	68,353	90,471	79,143	88,581	86,309	76,236
Machine tools, shipments.....1945-47=100..	74.7	72.8	56.1	75.3	r61.6	82.4
Pumps, steam, power, centrifugal and rotary:						
Orders, new.....thous. of dol..	2,699	2,775	2,938	3,313	3,376	3,668
PETROLEUM AND PRODUCTS						
Crude petroleum:						
Production.....thous. of bbl..	150,354	154,146	139,073	151,213	149,052
Consumption (runs to stills).....do.....	154,223	161,053	148,837	165,418	155,797
Stocks, end of month: Gasoline-bearing in U. S.....do....	272,520	273,912	243,750	r241,230	244,498
Refined petroleum products:						
Fuel oil:						
Production: Distillate fuel oil.....do....	25,368	25,199	28,729	29,070	29,301
Residual fuel oil.....do.....	34,417	35,277	32,818	35,768	31,225
Stocks, end of month: Distillate fuel oil.....do.....	51,231	58,381	1/52,206	1/37,777	1/37,530
Residual fuel oil.....do.....	59,668	63,576	47,828	41,860	39,979
Lubricating oils:						
Production.....do.....	3,457	3,606	3,587	4,086	3,645
Stocks, refinery, end of month.....do.....	10,588	10,089	9,341	8,989	8,787
Motor fuel:						
Production, total.....do.....	77,157	82,162	73,549	80,786	77,606
Gasoline and naphtha from crude petroleum.....do.....	68,432	72,905	64,685	71,350	68,254
Natural gasoline and allied products.....do.....	12,346	12,476	13,608	14,586	14,016
Stocks, gasoline, end of month:						
Finished gasoline.....do.....	117,020	113,164	124,177	124,924	119,584
Unfinished gasoline.....do.....	8,331	8,438	8,619	8,842	8,473
Natural gasoline.....do.....	7,253	7,418	8,098	7,708	7,950
PAPER AND PRINTING						
Paper, excluding building paper, newsprint, and paperboard:						
Orders, new.....short tons..	634,122	629,197	747,742	r858,342	r780,149	836,000
Production.....do.....	664,594	639,482	736,448	r840,837	r776,768	842,500
Shipments.....do.....	664,179	634,219	738,634	r844,503	r773,111	842,000
Stocks, end of month.....do.....	323,662	328,690	340,315	r336,644	r340,300	343,645
Fine paper:						
Orders, new.....do.....	86,811	80,045	100,628	r113,260	r94,040	103,000
Production.....do.....	83,706	84,822	92,899	r104,613	r95,470	102,000
Shipments.....do.....	85,520	84,286	92,368	r106,569	r95,192	102,000
Stocks, end of month.....do.....	85,997	86,545	86,350	r84,395	r84,673	84,670
Printing paper:						
Orders, new.....do.....	230,668	241,155	249,075	r290,232	r260,778	275,000
Production.....do.....	240,199	238,088	244,781	r288,123	r261,451	280,000
Shipments.....do.....	240,900	238,600	247,125	r285,697	r258,418	283,000
Stocks, end of month.....do.....	100,225	98,480	113,660	r116,085	r119,118	116,000
Coarse paper:						
Orders, new.....do.....	195,006	193,672	262,560	r304,000	r276,499	300,000
Production.....do.....	217,475	201,355	264,135	r300,675	r271,618	302,000
Shipments.....do.....	215,150	195,343	264,665	r304,231	r271,538	299,000
Stocks, end of month.....do.....	83,700	89,700	85,320	r81,764	r81,844	87,800
Newsprint, Canada (including Newfoundland):						
Production.....do.....	442,448	442,730	399,247	451,635	422,774	459,937
Shipments from mills.....do.....	428,999	459,129	376,834	426,960	425,660	479,560
Stocks, at mills, end of month.....do.....	191,190	174,791	157,601	182,276	179,390	159,767
Newsprint, United States:						
Consumption by publishers.....do.....	368,945	392,212	350,906	396,923	403,801	401,922
Production.....do.....	75,459	79,987	69,099	80,571	82,564	89,719
Shipments from mills.....do.....	73,930	80,162	70,756	79,027	85,340	86,257
Stocks, end of month: At mills.....do.....	11,309	11,134	7,352	8,896	6,120	9,582
At publishers.....do.....	381,865	373,041	328,881	318,036	284,010	288,684
In transit to publishers.....do.....	79,724	71,404	88,593	86,765	91,075	94,187
TRANSPORTATION EQUIPMENT						
Motor vehicles, factory sales, total.....number..	543,118	481,467	475,465	580,660	559,311	696,893
Coches, total.....do.....	514	564	133	199	268	412
Domestic.....do.....	494	511	128	170	234	323
Passenger cars, total.....do.....	436,392	394,703	385,361	469,618	455,193	575,518
Domestic.....do.....	422,149	380,489	377,185	461,119	446,524	563,119
Trucks, total.....do.....	106,212	86,200	89,971	110,843	103,850	120,963
Domestic.....do.....	91,808	75,518	80,939	99,809	93,294	108,997