



SURVEY OF CURRENT BUSINESS

WEEKLY SUPPLEMENT

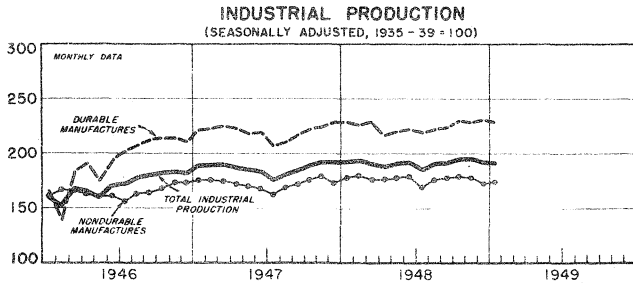
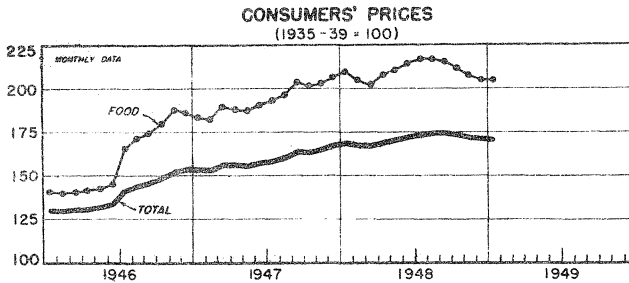
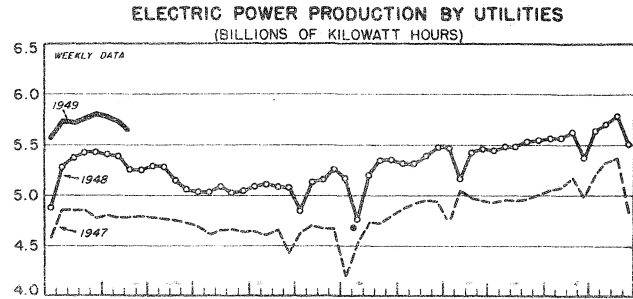
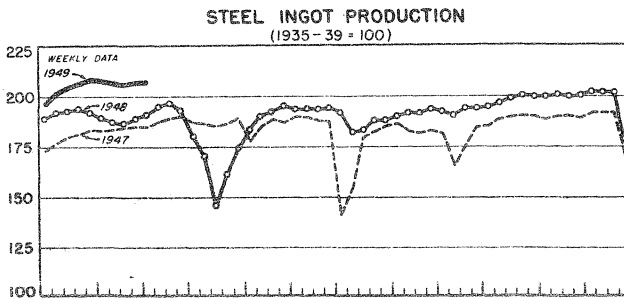


UNITED STATES DEPARTMENT OF COMMERCE
BUREAU OF FOREIGN AND DOMESTIC COMMERCE

AVAILABLE ONLY WITH SUBSCRIPTION TO SURVEY OF CURRENT BUSINESS

MARCH 4, 1949

SELECTED BUSINESS INDICATORS



WEEKLY BUSINESS STATISTICS¹

ITEM	1948		1949				
	Feb. 21	Feb. 28	Jan. 29	Feb. 5	Feb. 12	Feb. 19	Feb. 26
Commodity prices, wholesale:							
All commodities ^{2/}	159.9	159.9	158.8	158.8	156.9	158.5	158.5
Farm products ^{2/}	182.7	183.5	157.9	168.9	162.5	168.9	169.6
Food ^{2/}	170.0	170.3	159.2	158.6	156.9	159.0	160.8
All other ^{2/}	147.5	147.5	153.6	153.5	152.9	152.9	152.2
28 commodities ^{3/}	320.9	318.9	283.7	280.7	271.3	272.6	272.5
Cotton, middling, 15 ¹⁶ / ₁₆ , 10 markets ^{4/}321	.328	.329	.327	.322	.326	.328
Wheat, No. 2, Hard Winter (Kansas City).....	2.43	2.43	2.23	2.22	2.14	2.20	2.26
Department store sales.....	249	248	218	229	239	228
Insured unemployment, total ^{5/}	1,845	1,800	2,373	2,458
State programs.....	1,123	1,098	1,705	1,769
Veterans' programs.....	670	650	590	612
Finance:							
Currency in circulation ^{4/}	28,056	28,032	27,581	27,580	27,562	27,499	27,543
Federal Reserve bank credit, total.....	21,782	21,707	22,960	22,827	22,836	22,926	22,847
Member bank reserve balances.....	16,750	16,799	20,035	19,711	19,597	19,447	19,441
Excess reserves, estimated.....	765	964	921	579	574	535	620
Federal Reserve reporting member banks in leading cities:							
Bank debits, total.....	20,123	18,006	21,968	22,030	19,373	20,856
New York City.....	7,552	7,158	9,316	9,203	8,050	8,404	6,664
Deposits, demand, adjusted.....	47,409	47,559	47,665	46,945	46,553	46,121
Loans and investments, total.....	6/54,277	64,057	6/62,852	6/62,696	6/62,170	6/62,011
U. S. Government obligations.....	36,634	36,281	33,411	33,268	33,016	32,909
Commercial, industrial and agricultural loans.....	6/14,700	14,591	6/15,381	6/15,318	6/15,294	6/15,266
Failures, industrial and commercial.....	107	93	136	145	192	180
Bond yields, domestic corporate (Moody's).....	3.12	3.10	3.00	3.00	3.00	3.01	3.01
Stock prices, 416 stocks (Standard and Poor's).....	114.1	113.9	120.7	120.6	116.5	116.1	115.5
Industrials, 365 stocks.....	119.1	119.0	126.9	126.7	121.9	121.5	120.8
Production:							
Bituminous coal ^{4/}	2,150	2,154	1,747	1,898	1,907	1,793
Electric power, by utilities.....	5,254	5,252	5,810	5,778	5,722	5,650
Motor vehicles (Wards).....	108,426	114,880	113,042	98,972	105,088	109,475	111,446
Petroleum ^{4/}	5,342	5,387	5,439	5,351	5,350	5,361
Steel ^{7/}	186.8	189.0	208.8	208.4	206.7	206.5	207.1
Freight carloadings, total.....	805	791	679	682	699	697
Miscellaneous.....	380	374	333	329	339	344

^{1/} Data do not always cover calendar weeks. ^{2/} Revised series. See note in December 3, 1948 issue. ^{3/} Thursday prices. ^{4/} Daily averages. ^{5/} For description see note in July 13, 1946 issue. ^{6/} Beginning July 1948 individual loan items are reported gross, currently and for a year ago, instead of net as formerly; total loans are included on a net basis for all years. ^{7/} Week ending March 5, 207.5.

MONTHLY BUSINESS STATISTICS

Earlier data are available in monthly issues of the Survey and the 1947 Supplement	1947	1948				1949
	December	January	October	November	December	January
GENERAL BUSINESS INDICATORS						
Industrial production (Federal Reserve):						
Unadjusted, combined index.....1935-39=100..	190	189	198	195	r190	p187
Manufactures.....do.....	197	197	205	201	r197	p195
Durable manufactures.....do.....	228	226	232	229	r229	p226
Iron and steel.....do.....	206	203	221	223	r223	p227
Lumber and products.....do.....	140	138	154	142	r132	p120
Furniture.....do.....	181	173	170	169	r168	p158
Lumber.....do.....	119	117	145	128	113	p101
Machinery.....do.....	288	285	277	277	r277	p267
Nonferrous metals and products.....do.....	189	195	192	188	r185	p184
Smelting and refining.....do.....	183	188	191	176	183	p186
Stone, clay, and glass products.....do.....	200	190	220	209	p200	p191
Clay products.....do.....	172	166	180	179	r178	p168
Transportation equipment.....do.....	244	244	240	236	r248	p252
Automobiles (including parts).....do.....	206	206	206	200	r212	p215
Nondurable manufactures.....do.....	171	173	183	179	r171	p169
Chemicals.....do.....	255	253	258	257	r258	p251
Industrial chemicals.....do.....	438	437	446	447	r450	p438
Leather and products.....do.....	113	120	114	104	99
Leather tanning.....do.....	112	117	109	103	103
Shoes.....do.....	114	122	117	104	r97
Manufactured food products.....do.....	154	146	173	161	r153	p145
Meat packing.....do.....	187	175	142	173	181	p177
Processed fruits and vegetables.....do.....	108	92	198	130	r111	p90
Printing and publishing.....do.....	150	144	167	163	158	p151
Rubber products.....do.....	230	223	205	203	r199	p193
Textiles and products.....do.....	163	179	167	164	r156	p162
Cotton consumption.....do.....	131	153	129	122	114	p123
Rayon deliveries.....do.....	287	300	319	322	317	p316
Wool textile production.....do.....	166	181	168	162	151
Minerals.....do.....	151	149	161	160	151	p146
Fuels.....do.....	162	160	166	167	164	p159
Anthracite.....do.....	111	112	118	116	103	p88
Bituminous coal.....do.....	164	161	152	155	145	p145
Crude petroleum.....do.....	166	165	176	177	177	p171
Metals.....do.....	85	81	131	116	r78
Adjusted, combined index $\frac{1}{2}$do.....	192	193	195	195	192	p191
Manufactures.....do.....	198	201	202	201	198	p198
Durable manufactures.....do.....	230	229	230	229	r231	p229
Lumber and products.....do.....	153	155	147	145	143	p136
Lumber.....do.....	139	143	135	133	131	p124
Nonferrous metals and products.....do.....	189	195	192	187	r184	p184
Smelting and refining.....do.....	183	188	191	175	r183	p186
Stone, clay, and glass products.....do.....	205	202	210	203	r205	p204
Clay products.....do.....	166	179	171	172	r173	p180
Nondurable manufactures.....do.....	173	178	179	178	173	p174
Chemicals.....do.....	254	255	255	256	r257	p252
Leather and products.....do.....	114	120	114	103	r100
Leather tanning.....do.....	113	116	108	100	103
Manufactured food products.....do.....	158	158	161	159	r157	p157
Meat packing.....do.....	160	150	141	155	154	p150
Processed fruits and vegetables.....do.....	138	141	154	142	r142	p138
Printing and publishing.....do.....	146	148	164	156	154	p156
Minerals.....do.....	156	154	158	161	156	p151
Metals.....do.....	117	117	112	123	r111
BUSINESS POPULATION						
Industrial and commercial failures:						
Failures, total.....number..	317	356	461	460	531	566
Commercial service.....do.....	23	29	52	31	36	41
Construction.....do.....	26	23	40	37	64	53
Manufacturing and mining.....do.....	112	108	112	129	155	129
Retail trade.....do.....	123	153	188	208	217	267
Wholesale trade.....do.....	33	43	69	55	59	76
Liabilities, total.....thous. of dol.	25,499	12,965	101,060	24,416	31,731	19,159
Commercial service.....do.....	1,232	711	77,709	1,382	924	1,174
Construction.....do.....	455	820	1,135	955	2,396	1,892
Manufacturing and mining.....do.....	20,937	6,892	14,160	15,933	21,980	8,625
Retail trade.....do.....	1,908	2,837	5,917	3,456	4,247	4,841
Wholesale trade.....do.....	967	1,705	2,139	2,690	2,184	2,627
COMMODITY PRICES						
Consumers' price index, all items.....1935-39=100..	167.0	168.8	173.6	172.2	171.4	170.9
Apparel.....do.....	191.2	192.1	201.6	201.4	200.4	196.5
Food.....do.....	206.9	209.7	211.5	207.5	205.0	204.8
Fuel, electricity, and refrigeration.....do.....	127.8	129.5	137.8	137.9	137.8	138.2
Gas and electricity.....do.....	92.6	93.1	95.4	95.4	95.3	95.5
Other fuels.....do.....	162.0	174.6	191.4	191.6	191.3	191.8
Housefurnishings.....do.....	191.4	192.3	198.8	198.7	198.6	196.5
Rent.....do.....	115.4	115.9	118.7	118.8	119.5	119.7
Miscellaneous.....do.....	144.4	146.4	153.7	153.9	154.0	154.1
Wholesale prices (U.S. Labor Dept.), combined index.1926=100..	163.2	165.7	165.2	r164.0	r162.3	160.6
Economic classes: Manufactured products.....do.....	154.9	157.8	160.2	158.7	157.5	156.3
Raw materials.....do.....	182.0	183.9	177.0	175.2	172.1	169.3
Semimanufactured articles.....do.....	156.5	r156.8	158.4	r161.0	r160.8	160.3

r/ Revised. p/ Preliminary. $\frac{1}{2}$ Indexes for which seasonal factors have been fixed at 100 are not shown; see unadjusted series.

MONTHLY BUSINESS STATISTICS—Continued

Earlier data are available in monthly issues of the Survey and the 1947 Supplement	1947		1948				1949
	December	January	October	November	December	January	
COMMODITY PRICES - Continued							
Wholesale prices (U. S. Labor Department) - Continued							
Farm products.....1926=100..	196.7	199.2	183.5	180.8	177.3	172.5	
Grains.....do.....	252.7	256.3	170.4	171.1	171.1	167.7	
Livestock and poultry.....do.....	226.3	232.9	223.4	213.4	204.6	194.7	
Commodities other than farm products.....do.....	155.6	158.2	161.0	r160.1	r158.8	157.8	
Food.....do.....	178.4	179.9	178.2	174.3	170.2	165.8	
Cereal products.....do.....	170.6	170.1	149.6	150.5	149.8	148.0	
Dairy products.....do.....	183.5	183.9	174.9	170.7	r171.2	163.6	
Fruits and vegetables.....do.....	135.4	140.7	137.1	139.6	139.8	145.3	
Meats, poultry and fish.....do.....	214.8	222.3	239.8	227.4	220.8	214.2	
Commodities other than farm products and foods.....do.....	145.5	148.3	153.2	r153.5	r153.0	152.9	
Building materials.....do.....	191.0	193.3	203.5	r203.0	r202.1	202.2	
Brick and tile.....do.....	148.8	150.9	160.1	160.4	160.5	162.4	
Cement.....do.....	121.6	126.5	133.7	133.7	133.5	134.0	
Lumber.....do.....	303.2	307.3	314.5	r310.7	r305.5	299.1	
Paint and paint materials.....do.....	164.0	163.2	160.4	161.6	161.5	166.3	
Chemicals and allied products.....do.....	135.0	138.8	134.8	r133.9	r130.6	125.7	
Chemicals.....do.....	124.1	125.8	127.5	124.8	r122.4	121.2	
Drugs and pharmaceutical materials.....do.....	154.9	154.4	152.6	151.9	151.4	150.3	
Fertilizer materials.....do.....	114.4	115.7	117.2	119.5	120.1	120.8	
Oils and fats.....do.....	215.9	236.7	192.9	r195.1	r179.4	146.1	
Fuel and lighting materials.....do.....	124.6	130.0	137.2	137.3	137.0	137.0	
Electricity.....do.....	66.5	66.5	66.5	67.3	
Gas.....do.....	85.4	84.5	90.9	92.6	91.0	
Petroleum products.....do.....	112.0	120.7	122.8	122.8	122.0	121.3	
Hides and leather products.....do.....	203.4	200.3	185.5	186.2	185.3	184.8	
Hides and skins.....do.....	256.9	238.9	202.0	206.0	197.2	198.7	
Leather.....do.....	217.2	209.4	180.4	183.8	186.5	185.4	
Shoes.....do.....	190.7	194.3	189.7	183.1	188.0	187.8	
Housefurnishings 1/.....do.....	139.4	141.3	147.5	148.2	148.4	148.2	
Furnishings.....do.....	142.8	143.8	152.5	153.6	153.6	153.6	
Furniture 1/.....do.....	136.2	139.1	142.5	142.8	143.1	142.7	
Metals and metal products.....do.....	151.5	154.3	172.4	173.3	173.8	175.9	
Iron and steel.....do.....	140.2	144.6	164.5	165.0	165.4	169.1	
Metals, nonferrous.....do.....	143.0	145.5	167.0	171.4	172.5	172.5	
Plumbing and heating equipment.....do.....	136.1	138.8	157.3	157.3	157.3	156.9	
Textile products.....do.....	148.0	148.4	146.9	r147.5	r146.7	146.0	
Clothing.....do.....	137.8	143.4	148.8	r149.1	148.8	147.7	
Cotton goods.....do.....	213.7	214.8	195.0	191.7	189.2	186.9	
Hosiery and underwear.....do.....	103.0	104.4	104.6	r104.0	r103.7	102.5	
Rayon.....do.....	40.0	40.7	41.8	41.8	41.8	41.8	
Silk.....do.....	73.3	46.4	46.4	46.4	46.4	
Woolen and worsted goods.....do.....	139.6	141.9	150.7	r159.6	r159.6	161.6	
Miscellaneous.....do.....	121.5	123.6	119.0	119.2	r118.5	117.3	
Automobile tires and tubes 1/.....do.....	63.4	66.2	66.2	66.2	66.2	65.4	
Paper and pulp.....do.....	164.7	168.1	170.2	169.9	169.5	168.3	
Wholesale prices of selected commodities:							
Butter, 92-score (New York).....dol. per lb..	.831	.851	.644	.629	.645	.630	
Coal, bituminous, mine run, composite.....dol. per short ton..	7.575	7.695	1/8.403	1/8.395	1/8.737	1/8.776	
Coffee, Santos, No. 4 (New York).....dol. per lb..	.268	.266	.268	.276	.272	.270	
Cotton, middling, 15/16", average, 10 markets.....dol. per lb..	.3579	.3515	.3121	.3149	.3217	.3259	
Cotton cloth, print, 64 x 60.....dol. per yd..	.283	.261	.157	.155	.158	.155	
Eggs, U. S. standards (Chicago).....dol. per doz..	.517	.441	.456	.494	.482	.432	
Grains and grain products:							
Corn, weighted average, 5 markets.....dol. per bu..	2.489	2.582	1.375	1.272	1.329	1.303	
Wheat, weighted average, 6 markets.....do.....	3.110	3.149	2.282	2.367	2.308	2.286	
Wheat flour, stand.patents (Minn.).....dol. per 100 lb. sack..	7.263	7.175	5.775	5.750	5.712	5.445	
Hides, packers', heavy, native steers.....dol. per lb..	.359	.308	.269	.295	.267	.267	
Livestock and meats:							
Beef steers (Chicago).....dol. per 100 lb..	29.08	29.16	32.05	30.71	26.78	24.35	
Hogs, all grades (Chicago).....do.....	26.31	26.71	25.48	22.68	21.01	19.46	
Beef, good (500-600 lbs.) (Chicago) 1/.....dol. per lb..	.459	.474	.518	.490	.443	.398	
Pork, fresh, loins, 8-10 lb. (New York).....do.....	.456	.482	.595	.456	.415	.429	
Lumber:							
Douglas fir, dia., No. 1, com., 2"x 4"x 16'.....dol. per M bd. ft..	70.587	67.815	75.240	75.240	70.785	66.330	
Southern pine, boards, No. 2, com., 1"x 6" or 8"x 12'.....do.....	78.316	78.594	71.815	70.289	r69.872	67.292	
Ponderosa pine, No. 3, common, 1" x 8".....do.....	61.680	63.550	71.030	69.930	69.590	68.000	
Metals and manufactures:							
Pig iron, composite 1/.....dol. per long ton..	37.52	40.28	47.00	47.59	47.59	47.65	
Steel, composite, finished 1/.....dol. per lb..	.0360	.0368	.0414	.0414	.0414	.0419	
Steel scrap, heavy melting (Pittsburgh).....dol. per long ton..	40.000	40.300	42.750	42.750	42.750	42.050	
Copper, electrolytic (New York).....do.....	.2120	.2120	.2320	.2320	.2320	.2320	
Lead, refined, pig, desilverized (New York).....do.....	.1500	.1500	.1950	.2150	.2150	.2150	
Zinc, prime, Western (St. Louis).....do.....	.1050	.1108	.1524	.1679	.1750	.1750	
Petroleum, crude (Kansas-Oklahoma), at wells.....dol. per bbl..	2.410	2.510	2.510	2.510	2.510	2.510	
Gasoline, tank wagon (New York).....dol. per gal..	.183	.188	.188	.188	.188	.191	
Sugar, refined, granulated (New York).....dol. per lb..	.082	.080	.076	.076	.076	.078	
Wool, raw, territory, fine, scoured.....do.....	1.255	1.255	1.788	1.750	1.790	1.800	
EMPLOYMENT CONDITIONS AND WAGES							
Hours and earnings (U. S. Department of Labor):							
Average weekly hours per worker, all manufacturing.....hours..	41.2	40.5	40.0	r39.8	r40.0	p39.6	
Durable goods industries.....do.....	41.7	40.9	40.9	r40.4	r40.5	p40.5	
Non-durable goods industries.....do.....	40.8	40.0	39.1	r39.2	r39.3	p38.6	

1/ Revised. 2/ Preliminary. 3/ See note on corresponding item in the February 1949 Survey.

MONTHLY BUSINESS STATISTICS—Continued

Earlier data are available in monthly issues of the Survey and the 1947 Supplement	1947		1948				1949
	December	January	October	November	December	January	
EMPLOYMENT CONDITIONS AND WAGES - Continued							
Hours and earnings (U. S. Department of Labor) - Continued							
Average weekly earnings, all manufacturing.....dollars..	52.69	52.07	r54.65	r54.57	r55.10	r54.77	
Durable goods industries.....do.....	56.48	55.46	r59.41	r58.71	r59.40	r59.26	
Nondurable goods industries.....do.....	48.72	48.45	r49.70	r50.19	r50.51	r49.98	
Average hourly earnings, all manufacturing.....do.....	1.278	1.285	r1.366	1.371	r1.376	r1.384	
Durable goods industries.....do.....	1.354	1.355	r1.452	r1.454	r1.457	r1.463	
Iron and steel and their products.....do.....	1.412	1.414	r1.525	1.525	1.528	r1.532	
Electrical machinery.....do.....	1.346	1.352	1.448	1.446	1.446	r1.453	
Machinery, except electrical.....do.....	1.413	1.415	1.518	r1.520	1.524	r1.521	
Automobiles.....do.....	1.563	1.538	r1.689	r1.688	1.691	r1.718	
Transportation equipment, except automobiles.....do.....	1.465	1.479	1.575	1.579	1.588	r1.592	
Nonferrous metals and products.....do.....	1.327	1.336	r1.440	r1.440	1.442	r1.435	
Lumber and timber basic products.....do.....	1.056	1.050	1.167	r1.162	1.140	a/	
Furniture and finished lumber products.....do.....	1.117	1.122	1.184	r1.188	1.187	r1.184	
Stone, clay, and glass products.....do.....	1.245	1.253	r1.345	r1.353	1.352	r1.346	
Nondurable goods industries.....do.....	1.196	1.210	r1.271	1.282	r1.286	r1.296	
Textile-mill products and other fiber mfrs.....do.....	1.100	1.115	1.187	r1.190	1.188	r1.190	
Apparel and other finished textile products.....do.....	1.052	1.094	1.087	r1.098	1.100	r1.123	
Leather and leather products.....do.....	1.092	1.095	1.145	1.149	1.146	r1.151	
Food and kindred products.....do.....	1.175	1.177	r1.232	r1.250	1.264	r1.269	
Tobacco manufactures.....do.....	.983	.984	.998	1.016	1.018	r1.015	
Paper and allied products.....do.....	1.226	1.235	r1.328	r1.336	1.330	r1.334	
Printing, publishing, and allied industries.....do.....	1.568	1.579	r1.709	r1.712	1.720	r1.725	
Chemicals and allied products.....do.....	1.293	1.311	r1.390	r1.398	1.402	r1.416	
Products of petroleum and coal.....do.....	1.551	1.586	r1.738	r1.763	1.740	a/	
Rubber products.....do.....	1.454	1.444	r1.507	r1.508	1.501	r1.515	
FINANCE							
Bonds:							
Average price of all listed bonds (N.Y.S.E.) 1/.....dollars..	99.62	99.77	99.79	99.85	100.18	100.47	
Domestic.....do.....	100.11	100.27	100.30	100.37	100.69	100.96	
Foreign.....do.....	68.96	68.77	68.19	67.82	68.41	69.82	
Value, issues listed on New York Stock Exchange:							
Face value, all issues 1/.....mil. of dol.	136,727	136,543	131,226	131,426	131,068	131,276	
Domestic.....do.....	134,347	134,173	128,923	129,126	128,771	128,994	
Foreign.....do.....	2,130	2,120	2,054	2,050	2,048	2,032	
Market value, all issues 1/.....do.....	136,207	136,232	130,245	131,234	131,306	131,897	
Domestic.....do.....	134,500	134,537	129,304	129,600	129,660	130,230	
Foreign.....do.....	1,469	1,458	1,400	1,390	1,401	1,419	
Stocks:							
Shares listed on New York Stock Exchange:							
Market value.....do.....	68,313	66,090	72,186	65,466	67,048	67,478	
Number of shares listed.....millions..	1,907	1,923	2,008	2,011	2,018	2,030	
FOODSTUFFS AND TOBACCO							
Fermented malt liquors:							
Production.....thous. of bbl.	6,110	6,392	6,893	6,173	6,807	6,040	
Tax-paid withdrawals.....do.....	6,445	5,953	6,366	6,666	6,567	5,889	
Stocks, end of month.....do.....	9,022	9,167	9,064	8,278	8,213	8,410	
Dairy products, production:							
Butter, creamery (factory).....thous. of lb.	76,584	r79,020	93,330	79,190	r83,880	91,895	
Cheese, total (factory).....do.....	60,072	r64,495	80,745	67,995	r72,905	80,775	
Meats, production, total.....mil. of lb.	1,918	1,762	1,691	1,890	1,757	1,757	
Beef and veal.....thous. of lb.	709,306	698,314	640,225	635,432	671,541	649,195	
Lamb and mutton.....do.....	61,943	60,107	67,469	61,663	58,337	55,520	
Pork, including lard.....do.....	1,147,168	1,003,276	724,588	993,960	1,159,770	1,052,620	
Lard.....do.....	204,084	188,171	120,682	176,282	225,748	212,810	
Tobacco, manufactured products, consumption (withdrawals):							
Cigarettes, small, tax-free.....millions..	2,997	3,213	4,030	2,736	3,185	
Cigarettes, small, tax-paid.....do.....	24,946	27,273	31,079	29,076	24,897	28,006	
Cigars, tax-paid.....thousands..	446,719	461,398	529,971	553,755	440,267	438,286	
Manufactured tobacco and snuff, tax-paid.....thous. of lb.	15,683	19,587	23,816	19,527	16,492	18,214	
METALS AND MANUFACTURES							
Iron ore (Lake Superior district):							
Consumption by furnaces.....thous. of long tons..	6,970	7,057	r7,273	r7,058	7,351	7,590	
Stocks, end of month, total.....do.....	36,095	29,081	43,883	45,160	39,460	31,904	
At furnaces.....do.....	31,749	25,205	38,619	39,470	34,557	27,882	
On Lake Erie docks.....do.....	4,346	3,877	5,264	5,690	4,903	4,022	
Machine tools, shipments.....1945-47=100..	98.4	75.3	80.4	76.2	96.9	98.8	
PAPER AND PRINTING							
Newsprint, Canada:							
Production.....short tons..	368,925	371,637	399,788	397,330	385,819	385,961	
Shipments from mills.....do.....	369,986	346,870	392,560	405,923	406,678	375,667	
Stocks, at mills, end of month.....do.....	44,563	69,330	83,843	75,250	54,391	64,685	
Newsprint, United States:							
Consumption by publishers.....do.....	322,136	292,534	381,697	364,253	363,698	332,671	
Production.....do.....	65,880	r68,379	73,268	72,355	74,817	75,626	
Shipments from mills.....do.....	68,720	68,322	73,214	72,371	73,584	75,096	
Stocks, end of month:							
At mills.....do.....	8,301	8,358	7,729	7,713	8,946	9,476	
At publishers.....do.....	292,920	295,052	345,423	344,226	373,590	382,691	
In transit to publishers.....do.....	84,113	89,132	101,655	92,892	84,555	98,165	

r/ Revised. p/ Preliminary. 1/ Includes bonds of the International Bank for Reconstruction and Development. a/ Not available.