



# SURVEY OF CURRENT BUSINESS

## WEEKLY SUPPLEMENT

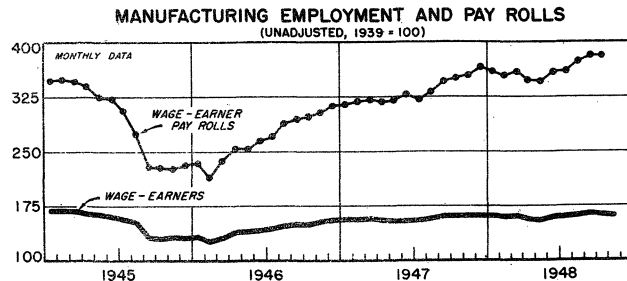
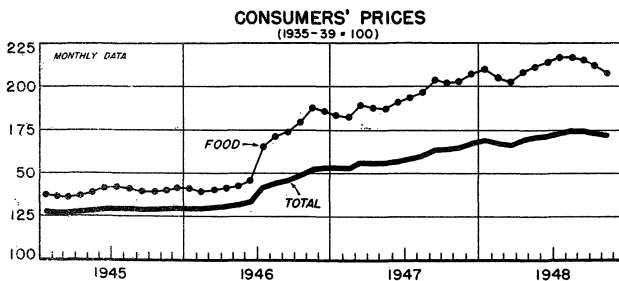
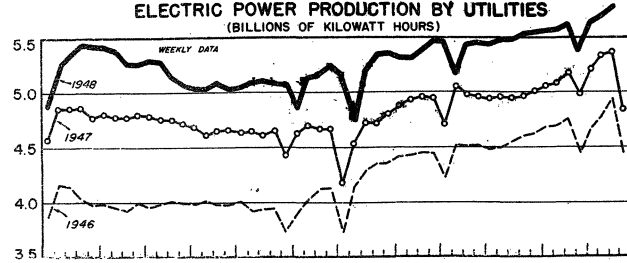
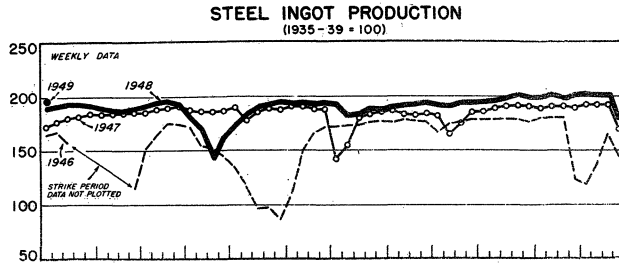


UNITED STATES DEPARTMENT OF COMMERCE  
BUREAU OF FOREIGN AND DOMESTIC COMMERCE

AVAILABLE ONLY WITH SUBSCRIPTION TO SURVEY OF CURRENT BUSINESS

DECEMBER 31, 1948

### SELECTED BUSINESS INDICATORS



### WEEKLY BUSINESS STATISTICS<sup>1</sup>

ITEM	1947		1948				
	Dec. 20	Dec. 27	Nov. 27	Dec. 4	Dec. 11	Dec. 18	Dec. 25
<b>Commodity prices, wholesale:</b>							
All commodities <sup>2/</sup> .....	162.6	163.2	164.9	165.1	163.7	163.0	163.8
Farm products <sup>2/</sup> .....	196.4	196.3	177.6	179.4	175.5	174.0	177.6
Food <sup>2/</sup> .....	178.2	175.7	177.1	177.0	173.7	172.6	174.1
All other <sup>2/</sup> .....	145.1	146.5	153.5	153.4	153.4	153.1	152.8
28 commodities <sup>3/</sup> .....	349.8	353.4	356.4	356.2	301.6	296.3	296.0
Cotton, middling, 15/16 <sup>4/</sup> , 10 markets <sup>4/</sup> .....	.357	.356	.317	.321	.322	.321	.321
Wheat, No. 2, Hard Winter (Kansas City).....	3.02	3.00	2.32	2.33	2.32	2.27	2.27
Department store sales.....	576	358	347	485	564	575	.....
Insured unemployment, total <sup>5/</sup> .....	1,247	1,340	1,344	1,453	.....	.....	.....
State programs.....	744	802	1,028	1,106	.....	.....	.....
Veterans' programs.....	454	483	281	312	.....	.....	.....
<b>Finance:</b>							
Currency in circulation <sup>4/</sup> .....	28,942	29,084	28,301	28,359	28,414	28,410	28,538
Federal Reserve bank credit, total.....	22,738	23,011	23,941	23,783	23,727	23,919	24,221
Member bank reserve balances.....	17,581	17,377	19,934	19,877	19,727	20,435	19,899
Excess reserves, estimated.....	1,165	1,073	905	795	665	1,258	709
<b>Federal Reserve reporting member banks in leading cities:</b>							
Bank debits, total.....	24,912	23,688	22,490	20,623	20,906	24,886	.....
New York City.....	10,959	9,430	8,541	8,287	8,400	11,033	10,069
Deposits, demand, adjusted.....	49,160	48,877	47,301	47,341	47,584	48,290	.....
Loans and investments, total.....	65,385	65,305	62,462	62,330	62,558	62,870	.....
U. S. Government obligations.....	37,653	37,366	33,073	33,075	33,179	33,440	.....
Commercial, industrial and agricultural loans.....	6/14,698	14,719	6/15,545	6/15,527	6/15,459	6/15,595	.....
Failures, commercial.....	91	38	101	126	122	96	.....
Bond yields, domestic corporate (Moody's).....	3.11	3.13	3.10	3.11	3.10	3.10	3.08
Stock prices, 416 stocks (Stand. and Poor's).....	122.6	124.7	118.0	118.4	119.9	119.4	119.2
Industrials, 365 stocks.....	129.5	131.1	123.7	124.2	126.0	125.5	125.4
<b>Production:</b>							
Bituminous coal <sup>4/</sup> .....	2,170	1,700	2,026	1,914	1,993	1,902	.....
Electric power, by utilities.....	5,368	4,830	5,374	5,646	5,705	5,790	.....
Motor vehicles (Wards).....	115,353	72,622	83,284	119,037	117,897	119,182	.....
Petroleum <sup>4/</sup> .....	5,284	5,285	5,617	5,615	5,620	5,645	.....
Steel <sup>7/</sup> .....	191.7	169.8	200.3	202.1	201.9	201.9	178.9
Freight carloadings, total.....	832	599	723	804	783	755	.....
Miscellaneous.....	392	291	338	383	379	368	.....

<sup>1/</sup> Data do not always cover calendar weeks. <sup>2/</sup> Revised series. See note in December 3, 1948 issue. <sup>3/</sup> Thursday prices. <sup>4/</sup> Daily averages. <sup>5/</sup> For description see note in July 13, 1946 issue. <sup>6/</sup> Beginning July 1948 individual loan items are reported gross, currently and for a year ago, instead of net as formerly; total loans are included on a net basis for all years. <sup>7/</sup> Week ending January 1, 1965.  
<sup>8/</sup> Price for Friday.

## MONTHLY BUSINESS STATISTICS

Earlier data are available in monthly issues of the Survey and the 1947 Supplement	1947		1948			
	October	November	August	September	October	November
<b>BUSINESS POPULATION</b>						
<b>Industrial and commercial failures:</b>						
Failures, total.....number..	336	313	439	398	461	460
Commercial service.....do....	29	23	35	38	52	31
Construction.....do.....	25	25	40	37	40	37
Manufacturing and mining.....do....	98	124	109	98	112	129
Retail trade.....do.....	129	115	194	173	188	208
Wholesale trade.....do.....	55	26	61	52	69	55
Liabilities, total.....thous. of dol..	21,322	16,345	21,442	20,703	101,060	24,416
Commercial service.....do.....	1,074	505	9,024	1,032	77,709	1,382
Construction.....do.....	2,301	537	1,861	1,101	1,135	955
Manufacturing and mining.....do....	13,337	12,574	5,580	12,165	14,160	15,933
Retail trade.....do.....	2,289	1,531	3,036	2,729	5,917	3,456
Wholesale trade.....do.....	2,321	1,198	1,931	3,676	2,139	2,690
<b>COMMODITY PRICES</b>						
Consumers' price index, combined index.....1935-39=100..	153.8	164.9	174.5	174.5	173.6	172.2
Apparel.....do.....	189.0	190.2	199.7	201.0	201.6	201.4
Food.....do.....	201.6	202.7	216.6	215.2	211.5	207.5
Fuel, electricity, and refrigeration.....do....	125.2	126.9	136.8	137.3	137.8	137.9
Gas and electricity.....do.....	92.2	92.5	94.5	94.6	95.4	95.4
Other fuels and ice 1/.....do.....	157.4	160.5	.....	.....	.....	.....
Housefurnishings.....do.....	187.8	188.9	196.3	198.1	198.8	198.7
Rent.....do.....	114.9	115.2	117.7	118.5	118.7	118.8
Miscellaneous.....do.....	141.8	143.0	152.4	152.7	153.7	153.9
Wholesale prices (U. S. Department of Labor):						
Combined index.....1926=100..	158.5	159.6	169.5	r168.7	r165.2	163.9
<b>Economic classes:</b>						
Manufactured products.....do.....	151.2	152.4	164.6	163.9	r160.2	158.7
Raw materials.....do.....	175.2	175.5	182.0	r181.0	r177.0	175.2
Semimanufactured articles.....do....	152.6	154.9	159.6	158.8	158.4	159.4
Farm products.....do.....	189.7	187.9	191.0	r189.9	r183.5	180.8
Grains.....do.....	241.4	245.5	179.2	176.9	170.4	171.1
Livestock and poultry.....do.....	224.5	211.0	290.0	244.2	223.4	213.4
Commodities other than farm products.....do....	151.5	153.1	164.6	163.8	r161.0	159.9
Foods.....do.....	177.7	177.9	189.5	r186.9	r178.2	174.3
Cereal products.....do.....	166.7	172.1	154.0	153.3	149.6	150.7
Dairy products.....do.....	167.3	175.9	185.1	179.9	174.9	170.7
Fruits and vegetables.....do.....	130.8	135.5	140.5	139.4	137.1	139.6
Meats.....do.....	230.0	217.6	273.7	266.5	239.8	227.4
Commodities other than farm products and foods.....do....	140.1	142.1	153.1	153.3	153.1	153.3
Building materials.....do.....	165.8	187.7	203.6	r204.0	r203.5	202.9
Brick and tile.....do.....	146.4	148.1	158.6	158.9	159.4	160.5
Cement.....do.....	120.1	120.6	133.2	133.3	133.7	133.7
Lumber.....do.....	290.2	296.0	319.5	317.1	314.5	310.3
Paint and paint materials.....do.....	160.7	161.8	158.1	r160.2	r160.4	161.6
Chemicals and allied products.....do....	128.6	135.8	132.0	133.3	134.4	135.2
Chemicals.....do.....	122.1	124.3	126.3	126.0	r127.5	124.8
Drugs and pharmaceutical materials.....do....	137.5	151.1	153.3	152.7	152.6	151.9
Fertilizer materials.....do.....	111.5	112.4	114.9	116.2	117.2	119.5
Oils and fats.....do.....	193.4	226.7	180.3	188.6	189.4	189.8
Fuel and lighting materials.....do.....	116.1	118.2	136.6	136.7	137.2	137.3
Electricity.....do.....	64.9	66.3	65.5	66.3	.....	.....
Gas.....do.....	86.8	83.6	86.9	90.7	.....	.....
Petroleum products.....do.....	96.5	99.9	122.1	122.2	122.8	122.8
Hides and leather products.....do.....	193.1	202.5	188.4	187.5	185.5	186.2
Hides and skins.....do.....	243.7	243.2	212.1	210.6	202.0	206.0
Leather.....do.....	205.0	216.9	186.0	181.9	180.4	183.8
Shoes.....do.....	180.6	187.0	189.4	190.0	189.7	188.1
Housefurnishings 2/.....do.....	132.4	137.5	145.4	146.6	147.4	148.2
Furnishings.....do.....	139.4	140.5	149.3	151.5	r152.4	153.5
Furniture 2/.....do.....	134.1	134.7	141.6	141.6	142.5	142.8
Metals and metal products.....do.....	150.5	150.8	170.9	r172.0	172.4	173.3
Iron and steel.....do.....	139.3	139.5	163.1	164.0	r164.5	165.0
Metals, nonferrous.....do.....	142.0	142.2	165.9	166.4	167.0	171.4
Plumbing and heating equipment.....do....	136.1	136.1	153.9	157.0	157.3	157.3
Textile products.....do.....	143.4	145.2	148.9	r147.9	r146.9	146.1
Clothing.....do.....	136.2	137.1	148.3	r148.6	r148.8	149.2
Cotton goods.....do.....	204.7	209.3	205.3	199.8	195.0	191.7
Hosiery and underwear.....do.....	100.0	101.4	104.9	104.8	104.6	104.3
Rayon.....do.....	37.0	37.0	41.6	41.8	41.8	41.8
Silk.....do.....	71.2	73.3	46.4	46.4	46.4	46.4
Woolen and worsted goods.....do.....	134.3	134.9	149.4	150.0	150.7	150.7
Miscellaneous.....do.....	117.1	118.8	119.7	119.9	119.0	119.2
Automobile tires and tubes 2/.....do....	60.8	61.0	66.2	66.2	66.2	66.2
Paper and pulp.....do.....	159.8	160.7	169.0	170.9	170.2	169.9
<b>Wholesale prices of selected commodities:</b>						
Butter, 92-score (New York).....dol. per lb..	0.718	0.794	0.756	0.719	0.644	0.629
Coal, bituminous, mine run, composite.....dol. per short ton..	7.528	7.549	2/8.379	2/8.403	2/8.403	2/8.395
Coffee, Santos, No. 4 (New York).....dol. per lb..	.270	.272	.268	.265	.268	.276
Cotton, middling, 15/16", average, 10 markets.....do.....	.3173	.3361	.3131	.3118	.3121	.3149
Cotton cloth, print, 64 x 60.....dol. per yd..	.268	.277	.172	.164	.157	.155
Eggs, U. S. standards (Chicago).....dol. per doz..	.464	.455	.444	.442	.456	.494

r/ Revised. 1/ Discontinued. 2/ See note on corresponding item in the December 1948 Survey.

MONTHLY BUSINESS STATISTICS—Continued

Earlier data are available in monthly issues of the Survey and the 1947 Supplement	1947		1948			
	October	November	August	September	October	November
<b>COMMODITY PRICES - Continued</b>						
Wholesale prices of selected commodities - continued						
Grains and grain products:						
Corn, weighted average, 5 markets.....dol. per bu..	2.277	2.345	1.949	1.760	1.375	1.272
Wheat, weighted average, 6 markets.....do....	3.093	3.154	2.218	2.256	2.282	2.367
Wheat flour, stand.patents (Minn.)...dol.per 100 lb.sack..	7.431	7.640	5.595	5.588	5.775	5.750
Hides, packers', heavy, native steers.....dol. per lb..	.343	.375	.291	.289	.269	.295
Livestock and meats:						
Beef steers (Chicago).....dol. per 100 lb..	29.82	29.52	35.22	34.03	32.05	30.71
Hogs, all grades (Chicago).....do....	27.81	24.96	26.89	27.75	25.48	22.68
Beef, fresh, native steers (Chicago).....dol. per lb..	.466	.466	.577	.552	.509	.....
Fork, fresh, loins, 8-10 lb (New York).....do....	.564	.480	.682	.675	.595	.456
Lumber:						
Douglas fir, dim., No. 1, com., 2"x 4"x 16'...dol. per M bd. ft..	67.815	67.815	75.240	75.240	75.240	75.240
Southern pine, boards, No. 2, com., 1"x 6" or 8"x 12' do....	73.311	74.521	73.063	71.869	71.815	70.289
Ponderosa pine, No. 3, common, 1" x 8".....do....	61.230	63.220	78.040	72.090	71.030	69.930
Metals and manufactures:						
Pig iron, composite 1/.....dol. per long ton..	37.28	37.32	45.32	45.44	47.00	47.59
Steel, composite, finished 1/.....dol. per lb..	.0360	.0360	.0414	.0414	.0414	.0414
Steel scrap, heavy melting (Pittsburgh).....dol. per long ton..	39.875	40.000	42.750	42.750	42.750	42.750
Copper, electrolytic (New York).....dol. per lb..	.2121	.2120	.2309	.2320	.2320	.2320
Lead, refined, pig, desilverized (New York).....do....	.1500	.1500	.1950	.1950	.1950	.2150
Zinc, prime, Western (St. Louis).....do....	.1050	.1050	.1500	.1500	.1524	.1679
Petroleum, cruds (Kansas-Oklahoma), at wells.....dol. per bbl..	1.910	2.010	2.510	2.510	2.510	2.510
Gasoline, tank wagon (New York).....dol. per gal..	.176	.178	.188	.188	.188	.188
Sugar, refined, granulated (New York).....dol. per lb..	.082	.082	.076	.076	.076	.076
Wool, raw, territory, fine, scoured.....do....	1.227	1.255	1/1.800	1/1.800	1/1.788	1/1.750
<b>EMPLOYMENT CONDITIONS AND WAGES</b>						
Employees in nonagr. establishments, unadj., total 2/ thous..						
Manufacturing.....do....	44,758	44,918	45,478	45,875	45,872	45,701
Mining.....do....	16,209	16,256	16,441	16,633	16,576	16,403
Construction.....do....	922	923	952	948	944	944
Transportation and public utilities.....do....	2,099	2,046	2,253	2,239	2,197	2,150
Trade.....do....	4,097	4,077	4,139	4,092	4,090	4,076
Finance.....do....	9,684	9,886	9,660	9,733	9,889	10,033
Services.....do....	1,671	1,673	1,761	1,732	1,723	1,718
Government.....do....	4,662	4,670	4,622	4,647	4,667	4,673
Employees in nonagr. est., adj., total (Fed. Res.) 2/ thous..	44,557	44,625	45,312	45,640	45,664	45,406
Manufacturing.....do....	16,161	16,216	16,278	16,542	16,527	16,363
Mining.....do....	919	922	944	939	933	933
Construction.....do....	1,999	2,006	2,106	2,093	2,092	2,108
Transportation and public utilities.....do....	4,101	4,080	4,078	4,085	4,094	4,080
Trade.....do....	9,613	9,636	9,805	9,806	9,817	9,817
Finance.....do....	1,688	1,690	1,752	1,741	1,740	1,735
Services.....do....	4,662	4,670	4,622	4,647	4,667	4,673
Government.....do....	5,414	5,405	5,727	5,781	5,788	5,733
Production workers, unadjusted index, all manufacturing						
(U. S. Department of Labor) 2/.....1939=100..	160.4	160.8	161.7	164.5	163.2	161.2
Durable goods industries.....do....						
Iron and steel and their products.....do....	185.0	186.8	185.8	188.1	188.7	188.6
Electrical machinery.....do....	162.3	163.3	164.5	166.2	167.1	166.9
Machinery, except electrical.....do....	228.9	229.7	207.7	211.5	213.4	214.1
Automobiles.....do....	229.7	229.5	227.4	228.7	228.7	228.8
Transportation equipment, except automobiles.....do....	190.0	190.4	189.7	193.2	192.2	191.7
Nonferrous metals and products.....do....	269.2	269.2	260.8	276.3	282.9	282.2
Lumber and timber basic products.....do....	176.3	178.8	172.4	173.9	176.0	176.5
Furniture and finished lumber products.....do....	178.6	178.6	200.8	200.6	197.7	197.9
Stone, clay, and glass products.....do....	144.8	147.1	140.5	142.0	143.3	142.9
Nondurable goods industries.....do....						
Textile-mill products and other fiber manufactures.....do....	152.8	154.0	157.0	158.2	159.4	159.3
Apparel and other finished textile products.....do....	141.1	140.4	142.7	145.9	143.1	139.6
Leather and leather products.....do....	109.2	111.1	111.4	110.3	109.2	108.5
Food and kindred products.....do....	142.7	141.5	145.5	148.6	148.8	146.1
Tobacco manufactures.....do....	113.2	114.1	110.4	109.3	108.3	104.3
Paper and allied products.....do....	158.3	150.7	166.0	179.9	163.8	163.2
Printing, publishing, and allied industries.....do....	95.1	96.5	92.5	93.9	95.9	96.5
Chemicals and allied products.....do....	147.8	148.6	148.6	148.8	151.0	151.6
Products of petroleum and coal.....do....	134.6	135.4	131.8	133.0	134.8	134.1
Rubber products.....do....	203.2	204.5	203.3	207.1	208.1	208.4
Production workers, adj. index, all mfg. (Fed. Res.) 2/.....do....	155.8	159.1	160.3	159.1	153.6	151.6
Durable goods industries.....do....	171.7	174.0	160.9	162.8	163.5	163.6
Nondurable goods industries.....do....	160.0	160.4	160.1	163.1	162.7	160.8
Labor turn-over in manufacturing establishments:	184.8	186.8	184.9	187.7	188.5	188.6
Accession rate.....monthly rate per 100 employees..	140.4	139.7	140.6	143.8	142.3	138.9
Separation rate, total.....do....	5.5	4.8	5.0	5.1	4.5	.....
Discharges.....do....	5.0	4.0	5.1	5.4	4.5	.....
Lay-offs.....do....	.4	.4	.4	.4	.4	.....
Quits.....do....	.9	.8	1.2	1.0	1.2	.....
Military and miscellaneous.....do....	3.6	2.7	3.4	3.9	2.8	.....
<b>CHEMICALS AND ALLIED PRODUCTS</b>						
Oils, fats, and by-products:						
Animal fats: Production.....thous. of lb..	227,941	283,334	189,987	185,865	221,253	298,192
Stocks, end of month.....do....	251,134	259,905	376,852	326,165	288,614	301,504

f/ Revised. p/ Preliminary. 1/ See note on corresponding item in the December 1948 Survey. 2/ Adjusted to Federal Security data through 1946.

## MONTHLY BUSINESS STATISTICS—Continued

Earlier data are available in monthly issues of the Survey and the 1947 Supplement	1947		1948			
	October	November	August	September	October	November
<b>PAPER AND PRINTING - Continued</b>						
Paper, excl. building paper, newsprint, etc. - Continued						
Printing paper:						
Orders, new.....short tons..	249,016	252,829	232,900	r269,577	r256,445	231,000
Production.....do.....	275,837	257,210	254,299	r256,417	r272,943	268,000
Shipments.....do.....	275,699	257,736	252,730	r254,285	r271,600	264,500
Stocks, end of month.....do.....	62,782	66,036	87,150	r87,500	r89,000	92,000
Coarse paper:						
Orders, new.....do.....	264,665	241,042	264,800	r258,303	r272,000	269,000
Production.....do.....	258,098	249,895	274,874	r257,541	r278,716	284,500
Shipments.....do.....	260,401	247,650	274,745	r254,292	r280,620	277,000
Stocks, end of month.....do.....	57,886	60,756	62,925	r66,030	r65,000	72,000
<b>PETROLEUM AND COAL PRODUCTS</b>						
Bituminous:						
Industrial consumption and retail deliveries, total thous. of short tons..						
Industrial consumption, total.....do.....	48,006	45,863	41,966	42,331	r45,950	43,880
Beehive coke ovens.....do.....	40,252	37,853	36,470	36,175	r38,575	37,670
Byproduct coke ovens.....do.....	965	866	960	922	r974	950
Cement mills.....do.....	8,278	8,091	8,349	8,199	8,500	8,268
Electric power utilities.....do.....	704	730	719	679	r751	771
Railways (class I).....do.....	8,121	7,737	8,203	8,272	8,689	8,261
Steel and rolling mills.....do.....	9,048	9,167	7,467	7,258	7,851	7,655
Other industrial.....do.....	826	867	706	697	766	793
Retail deliveries.....do.....	12,519	10,586	10,066	10,148	r11,044	10,972
Stocks, industrial and retail dealers, end of month, total.....thous. of short tons..	7,754	8,010	5,496	6,156	7,375	6,210
Industrial, total.....do.....	50,276	50,455	64,057	67,592	r68,696	69,579
Byproduct coke ovens.....do.....	48,144	48,255	61,385	64,674	r65,772	66,500
Cement mills.....do.....	7,310	8,207	10,289	10,968	11,348	11,465
Electric power utilities.....do.....	1,049	1,087	1,328	1,369	r1,354	1,377
Railways (class I).....do.....	16,772	16,673	21,107	22,751	23,875	24,894
Steel and rolling mills.....do.....	6,305	6,156	8,665	8,815	9,099	9,153
Other industrial.....do.....	1,076	985	1,166	1,152	1,066	1,019
Retail dealers, total.....do.....	15,632	15,147	18,810	19,619	19,030	18,592
Crude petroleum:	2,132	2,200	2,672	2,918	2,924	3,079
Production.....thous. of bbl.....	164,913	158,736	172,886	163,037	174,581	.....
Consumption (runs to stills).....do.....	162,854	158,719	174,242	161,280	173,429	.....
Stocks, end of month:	.....	.....	.....	.....	.....	.....
Refinable in U. S.....do.....	226,666	225,462	224,211	228,401	234,615	.....
Heavy in California.....do.....	5,275	5,623	7,743	8,901	9,357	.....
Refined petroleum products:						
Gas and fuel oils:						
Production:						
Gas oil and distillate fuel oil.....do.....	29,072	28,254	32,190	r28,960	33,140	.....
Residual fuel oil.....do.....	39,066	37,344	38,673	r34,493	39,313	.....
Stocks, end of month:						
Gas oil and distillate fuel oil.....do.....	63,252	61,334	68,818	76,320	82,920	.....
Residual fuel oil.....do.....	52,502	52,455	64,096	68,005	72,363	.....
Lubricating oils:						
Production.....do.....	4,350	4,264	4,341	4,121	4,580	.....
Stocks, refinery, end of month.....do.....	8,157	8,531	1/8,747	1/8,884	1/9,306	.....
Motor fuel:						
Production, total.....do.....	75,656	72,061	80,711	74,505	79,476	.....
Gasoline and naphtha from crude petroleum.....do.....	67,150	63,623	71,964	66,522	70,579	.....
Natural gasoline and allied products.....do.....	11,685	11,951	12,157	11,543	12,833	.....
Stocks, gasoline, end of month:						
Finished gasoline.....do.....	74,710	78,669	87,187	82,254	83,969	.....
Unfinished gasoline.....do.....	7,874	8,882	8,258	8,264	8,457	.....
Natural gasoline.....do.....	4,221	4,266	6,308	6,287	6,173	.....
<b>RUBBER AND RUBBER PRODUCTS</b>						
Natural rubber:						
Consumption.....long tons..	57,286	52,076	53,366	52,131	r49,617	51,554
Stocks, end of month <u>2/</u> .....do.....	114,115	110,752	129,622	123,912	r118,187	113,090
Synthetic rubber:						
Production.....do.....	33,834	37,825	39,630	37,890	41,419	40,913
Consumption.....do.....	45,668	39,091	39,339	39,215	r38,367	37,512
Stocks, end of month <u>3/</u> .....do.....	67,379	67,871	97,197	98,246	r102,842	107,459
<b>STONE, CLAY, AND GLASS PRODUCTS</b>						
Glass containers:						
Production.....thous. of gross..	9,646	8,402	8,934	8,712	9,107	7,313
Shipments.....do.....	8,767	7,703	8,399	10,235	8,280	6,563
Stocks, end of month.....do.....	7,896	8,132	8,876	7,246	7,795	8,281

1/ Revised. 1/ New basis excluding distributors' stocks in California; see note on corresponding item in the December 1948 Survey.  
2/ Beginning July 1947 data are reported stocks available to industry. 3/ Beginning July 1947 data are reported stocks.