



SURVEY OF CURRENT BUSINESS

WEEKLY SUPPLEMENT

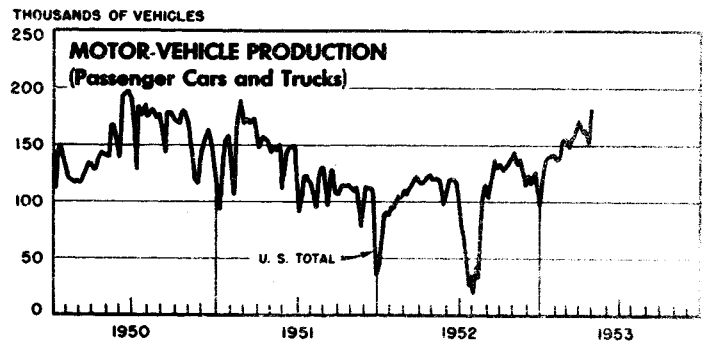
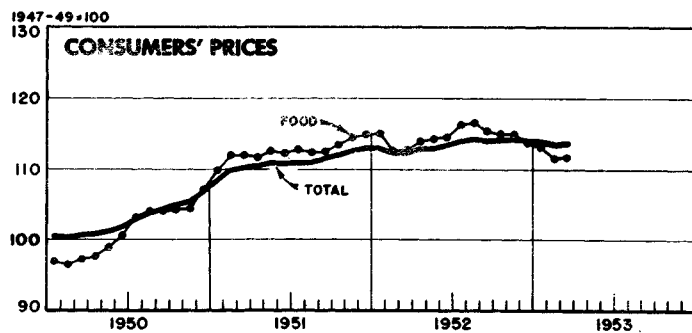
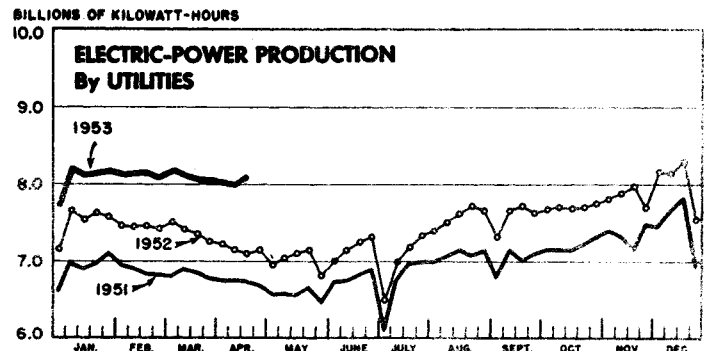
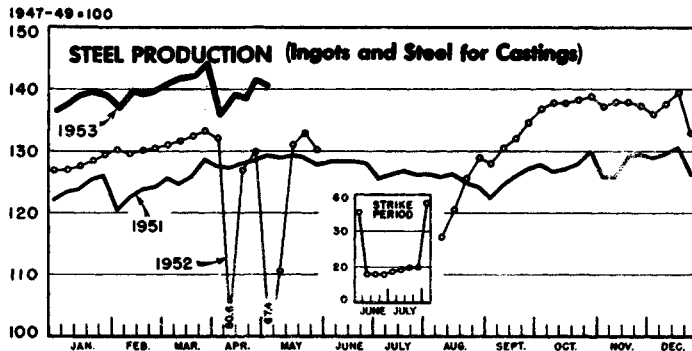


UNITED STATES DEPARTMENT OF COMMERCE
OFFICE OF BUSINESS ECONOMICS

Available only with subscription to the monthly magazine SURVEY OF CURRENT BUSINESS

MAY 1, 1953

SELECTED BUSINESS INDICATORS



WEEKLY BUSINESS STATISTICS¹

ITEM	1952			1953			
	Apr. 19	Apr. 26	Mar. 28	Apr. 4	Apr. 11	Apr. 18	Apr. 25
Commodity prices, wholesale:							
All commodities..... 1947-49=100..	*111.8	**110.1	109.6	109.5	100.0
Farm products..... do.....	*108.7	**100.0	98.6	98.0	98.8
Foods, processed..... do.....	*108.0	**105.0	103.6	103.4	104.0
All other..... do.....	*113.3	**113.4	113.2	113.3	115.2
22 commodities ^{2/} do.....	97.9	97.4	90.3	89.5	88.2	87.8	87.0
Cotton, middling, 15/16", 10 markets ^{3/} dol. per lb..	.410	.400	.329	.330	.329	.329	.328
Wheat, No. 2, hard winter (Kansas City) ^{3/} dol. per bu..	2.49	2.49	2.40	2.38	2.35	2.40	2.38
Department store sales..... 1947-49=100..	97	105	112	118	97	105
Insured unemployment, total..... thous..	1,198	1,161	1,056	1,050	1,056
State programs..... do.....	1,167	1,133	976	975	982
Finance:							
Currency in circulation ^{3/} mil. of dol..	28,454	28,367	29,662	29,799	29,801	29,782	29,757
Federal Reserve bank credit, total..... do.....	24,109	23,973	25,387	25,023	25,427	25,549	25,391
Member bank reserve balances..... do.....	20,218	19,875	20,148	19,305	19,629	19,932	19,476
Excess reserves, estimated..... do.....	993	788	280	-306	76	337	-42
Federal Reserve reporting member banks in leading cities: ^{4/}							
Demand deposits, adjusted..... mil. of dol..	51,823	52,153	53,275	51,802	52,723	53,542
Time deposits, except Government..... do.....	16,602	16,604	18,122	18,087	18,189	18,171
Loans and investments, total..... do.....	73,108	73,076	77,808	76,827	76,882	76,925
U. S. Government obligations..... do.....	31,244	31,216	30,650	29,547	29,736	29,622
Commercial, industrial, and agr. loans (gross)..... do.....	21,052	20,872	23,337	23,269	23,297	23,287
Real-estate loans (gross)..... do.....	5,673	5,679	6,173	6,176	6,180	6,210
Failures, industrial and commercial..... number..	188	168	188	171	140	165
Bond yields, domestic corporate (Moody's) ^{3/} percent..	3.16	3.16	3.33	3.35	3.37	3.40	3.43
Stock prices, 480 stocks (Standard and Poor's)..... 1935-39=100..	182.9	181.9	198.5	193.1	190.8	190.9	190.2
Industrials, 420 stocks..... do.....	198.5	197.4	215.2	209.2	206.8	206.4	202.8
Production:							
Bituminous coal ^{3/} thous. of short tons..	1,532	1,625	1,376	1,334	1,410	1,450
Electric power, by utilities..... mil. of kw.-hr..	7,104	7,135	8,075	8,019	8,001	8,113
Motor vehicles (Ward's)..... number..	121,805	124,832	170,870	160,736	164,932	150,642	163,447
Petroleum, crude ^{3/} thous. of bbl..	6,271	6,277	6,384	6,243	6,171	6,185
Steel ^{5/} 1947-49=100..	126.8	129.9	144.7	136.3	138.8	138.7	141.7
Freight car loadings, total..... thous. of cars..	735	779	715	705	721	752
Miscellaneous..... do.....	366	376	400	384	377	388

^{1/} Data do not always cover calendar weeks. ^{2/} Tuesday prices. ^{3/} Daily averages. ^{4/} New basis beginning March 7, 1953; not strictly comparable with earlier data. ^{5/} Week ending May 2, 1953. * Monthly index for April 1952. ** Monthly index for March 1953.

MONTHLY BUSINESS STATISTICS

Earlier data are available in monthly issues of the Survey and the 1951 Statistical Supplement	1952			1953		
	February	March	December	January	February	March
BUSINESS POPULATION						
Industrial and commercial failures:						
Failures, total.....number..	619	715	583	647	691	739
Commercial service.....do....	52	55	43	39	49	63
Construction.....do....	70	72	76	78	86	85
Manufacturing and mining.....do....	133	148	131	130	132	154
Retail trade.....do....	304	371	288	334	348	361
Wholesale trade.....do....	60	69	45	66	76	76
Liabilities, total.....thous. of dol..	19,474	29,232	23,400	23,309	27,273	31,082
Commercial service.....do....	1,649	4,563	953	868	1,180	1,387
Construction.....do....	1,935	2,485	5,068	2,735	3,378	3,506
Manufacturing and mining.....do....	5,614	13,046	8,458	9,107	8,452	12,213
Retail trade.....do....	6,548	6,905	7,046	8,009	9,139	10,423
Wholesale trade.....do....	3,728	2,233	1,875	2,590	5,124	3,553
COMMODITY PRICES						
Consumer price index, all items.....1947-49=100..	112.4	112.4	114.1	113.9	113.4	1/113.6
Apparel.....do....	106.8	106.4	105.1	104.6	104.6	104.7
Food.....do....	112.6	112.7	113.8	113.1	111.5	111.7
Dairy products.....do....	112.7	112.0	112.7	111.6	110.7	110.3
Fruits and vegetables.....do....	109.5	113.7	115.8	116.7	115.9	115.5
Meats, poultry, and fish.....do....	116.7	115.2	113.0	110.9	107.7	107.4
Housing.....do....	114.0	114.0	116.4	116.4	116.6	116.8
Gas and electricity.....do....	103.8	103.8	105.6	105.9	106.1	106.5
Housefurnishings.....do....	110.0	109.4	108.2	107.7	108.0	108.0
Rent.....do....	116.4	116.7	120.7	121.1	121.5	121.7
Medical care.....do....	114.8	115.7	119.3	119.4	119.3	119.5
Personal care.....do....	111.1	111.0	112.5	112.4	112.5	112.4
Reading and recreation.....do....	106.6	106.3	108.0	107.8	107.5	107.7
Transportation.....do....	123.7	124.4	128.9	129.3	129.1	129.3
Other goods and services.....do....	114.4	114.8	115.9	115.9	115.8	117.5
CONSTRUCTION AND REAL ESTATE						
Construction contracts awarded, 37 States (F. W. Dodge Corp.):						
Total projects.....number..	33,767	45,041	34,661	35,475	34,561	50,484
Total valuation.....thous. of dol..	885,206	1,321,254	1,467,384	1,075,868	1,021,310	1,347,518
Building, total.....do....	697,842	1,055,993	1,151,680	866,950	792,889	1,054,375
Highway concrete pavement contract awards: 2/						
Total.....thous. of sq. yd..	3,723	5,411	3/4,675	4,874	3,509	7,006
Airports.....do....	879	427	446	1,226	495	1,652
Roads.....do....	988	3,289	3/2,775	2,622	1,481	3,215
Streets and alleys.....do....	1,856	1,695	3/1,454	1,026	1,533	2,140
FINANCE						
Bonds, price (Standard and Poor's Corporation):						
Industrial, utility, and railroad (AI+ issues):						
Composite (17 bonds).....dol. per \$100 bond..	116.5	115.9	115.3	114.5	114.0	113.4
Stocks, cash dividend payments publicly reported:						
Total, dividend payments.....mil. of dol..	181.1	1,202.7	1,736.1	548.1	181.3	1,251.1
Finance.....do....	41.9	75.7	195.2	125.6	44.9	81.4
Manufacturing.....do....	64.7	808.2	1,045.5	170.5	65.0	821.9
Mining.....do....	2.3	89.6	141.9	5.0	2.9	86.9
Communications.....do....	.8	39.2	49.7	95.7	.9	46.9
Heat, light, and power.....do....	46.6	74.9	92.6	64.3	42.0	89.0
Railroad.....do....	7.0	50.7	88.4	18.2	6.9	57.7
Trade.....do....	14.8	38.4	79.2	57.0	15.5	40.3
Miscellaneous.....do....	3.0	26.0	43.6	11.8	3.2	27.0
CHEMICALS AND ALLIED PRODUCTS						
Paints, varnish, and lacquer:						
Factory shipments, total.....thous. of dol..	106,386	110,938	90,563	r 107,729	105,221
Industrial sales.....do....	41,608	41,594	41,273	r 42,960	43,118
Trade sales.....do....	64,778	69,344	49,290	r 64,769	62,103
FOODSTUFFS						
Dairy products, production:						
Butter, creamery (factory).....thous. of lb..	78,795	93,095	95,855	106,095	102,770	122,895
Cheese (factory), total.....do....	70,860	86,350	84,840	87,355	85,410	105,935
Livestock:						
Cattle and calves:						
Receipts, principal markets.....thous. of animals..	1,532	1,532	2,023	1,877	1,609	1,952
Shipments, feeder, to 8 corn-belt States.....do....	158	143	250	184	80	119
Hogs:						
Receipts, principal markets.....do....	3,626	3,602	4,233	3,571	2,562	2,785
Sheep and lambs:						
Receipts, principal markets.....do....	980	998	1,267	1,295	1,038	1,173
Shipments, feeder, to 8 corn-belt States.....do....	109	119	203	147	83	113
Meats, production, total.....mil. of lb..						
Beef and veal.....thous. of lb..	593,420	557,237	735,078	775,091	701,489	779,450
Lamb and mutton.....do....	48,986	48,201	56,616	61,371	53,166	58,129
Pork, including lard.....do....	1,072,252	1,050,706	1,335,205	1,162,504	816,995	874,686
Lard.....do....	220,934	213,346	256,269	234,448	157,799	164,072

r/ Revised. 1/ Index on base previously used (1935-39=100) is 189.9. 2/ Data for December 1952 are for 5 weeks; other months, 4 weeks.
 3/ Data include some contracts awarded in prior months but not reported.

MONTHLY BUSINESS STATISTICS—Continued

Earlier data are available in monthly issues of the Survey and the 1951 Statistical Supplement	1952			1953		
	February	March	December	January	February	March
METALS AND MANUFACTURES						
Iron ore (Lake Superior district):						
Consumption by furnaces.....thous. of long tons..	7,233	r8,032	8,220	8,293	7,396	8,257
Stocks, end of month, total.....do.....	29,207	21,451	45,172	37,077	29,949	22,065
At furnaces.....do.....	24,693	18,082	39,055	31,967	25,741	19,026
On Lake Erie docks.....do.....	4,514	3,369	6,116	5,110	4,207	3,039
Castings, gray iron:						
Orders, unfilled, for sale.....thous. of short tons..	1,766	1,711	1,316	1,333	1,332
Shipments, total.....do.....	1,155	1,172	1,142	1,162	1,136
For sale.....do.....	655	661	619	622	607
Castings, malleable iron:						
Orders, unfilled, for sale.....short tons..	193,061	196,896	173,494	174,809	175,088
Shipments, total.....do.....	82,898	80,960	80,680	87,249	86,515
For sale.....do.....	50,129	49,084	50,485	53,272	51,963
Pig iron, production.....thous. of short tons..	5,785	6,300	6,510	6,564	5,882	6,677
Castings, steel:						
Shipments, total.....short tons..	174,626	173,694	161,733	167,211	175,675
For sale, total.....do.....	133,602	131,997	122,166	126,819	137,592
Railway specialties.....do.....	31,317	32,118	25,972	26,752	33,156
Steel forgings: <u>1/</u>						
Orders, unfilled, total.....do.....	1,464,255	1,359,752	1,207,058	1,206,550	1,199,151
Shipments, for sale, total.....do.....	187,487	176,441	180,538	183,545	183,709
Drop and upset.....do.....	125,042	127,768	133,851	137,221	135,682
Press and open hammer.....do.....	62,445	48,675	46,687	46,324	48,027
Cans, metal, shipments, total.....do.....	235,648	266,920	256,206	269,597	252,084
Food.....do.....	144,439	157,279	158,612	167,764	151,200
Nonfood.....do.....	91,209	109,641	97,594	101,833	100,884
Shipments for sale.....do.....	199,445	228,841	218,342	226,078	214,350
Lead, refined (primary refineries):						
Production.....do.....	44,133	48,943	48,651	47,295	45,423	47,993
Shipments (domestic).....do.....	41,291	39,161	40,370	37,678	38,811	44,361
Stocks, end of month.....do.....	31,297	41,040	43,560	52,760	58,949	62,371
Machine tools:						
New orders.....1945-47=100..	318.8	324.3	225.2	255.8	r282.1	p323.5
Shipments.....do.....	279.6	299.5	355.0	361.6	r354.5	p376.0
Electrical appliances, domestic, sales billed:						
Vacuum cleaners, standard type.....number..	235,936	290,092	249,032	255,886	246,007	329,294
Washers.....do.....	261,512	254,135	317,914	282,453	333,601	353,972
Radio sets, production <u>2/</u>do.....	855,478	1,101,607	1,498,258	1,093,142	1,192,439	1,549,203
Television sets (incl. combination), production <u>2/</u>do.....	409,337	510,561	921,086	719,234	730,597	810,112
PETROLEUM AND PRODUCTS¹						
Crude petroleum:						
Production.....thous. of bbl..	184,654	198,028	205,645	203,214	183,736
Consumption (runs to stills).....do.....	193,524	205,825	215,504	218,288	195,133
Stocks, end of month:						
Gasoline-bearing in U. S.....do.....	255,900	259,126	271,928	272,250	273,589
Refined petroleum products:						
Fuel oil:						
Production: Distillate fuel oil.....do.....	44,314	43,402	46,768	47,379	42,153
Residual fuel oil.....do.....	38,352	39,482	40,351	40,515	35,704
Stocks, end of month: Distillate fuel oil.....do.....	55,369	48,750	99,582	<u>1/</u> 80,655	67,167
Residual fuel oil.....do.....	38,295	37,971	48,706	45,910	44,178
Lubricating oils:						
Production.....do.....	4,456	4,921	4,416	4,210	3,596
Stocks, refinery, end of month.....do.....	10,049	10,169	11,021	11,250	11,224
Motor fuel:						
All types:						
Production, total.....do.....	93,134	99,093	106,432	<u>1/</u> 107,413	<u>1/</u> 96,796
Gasoline and naphtha from crude petroleum.....do.....	82,052	87,096	94,725	<u>1/</u> 95,609	<u>1/</u> 86,221
Natural gasoline and allied products.....do.....	18,070	18,724	20,804	<u>1/</u> 20,617	<u>1/</u> 18,408
Sales of l. p. g. for fuel, etc., and transfer of cycle products.....do.....	6,988	6,727	9,097	9,082	7,685
Stocks, gasoline, end of month:						
Finished gasoline.....do.....	143,910	152,556	127,792	141,746	149,069
Unfinished gasoline.....do.....	8,002	8,133	8,236	8,772	8,804
Natural gasoline.....do.....	8,585	9,527	7,807	7,575	7,748
Aviation gasoline:						
Production, total.....do.....	6,137	6,922	7,230	7,020	6,670
100-octane and above.....do.....	4,875	5,848	5,853	6,060	5,815
Stocks, total.....do.....	8,503	8,529	9,126	9,754	9,425
100-octane and above.....do.....	4,421	4,507	4,761	5,241	4,887
PAPER AND PRINTING						
Newsprint, Canada (including Newfoundland):						
Production.....short tons..	457,835	476,492	463,377	473,640	439,167	484,276
Shipments from mills.....do.....	441,349	453,162	463,064	467,627	408,610	441,512
Stocks, at mills, end of month.....do.....	143,640	166,970	122,512	128,525	159,082	201,846
Newsprint, United States:						
Consumption by publishers.....do.....	348,630	399,258	386,627	351,775	346,035	420,956
Production.....do.....	94,759	99,633	86,659	93,789	82,892	91,911
Shipments from mills.....do.....	96,982	98,696	83,007	93,908	83,208	94,505
Stocks, end of month: At mills.....do.....	7,515	8,452	11,726	11,607	11,291	8,697
At publishers.....do.....	475,502	457,617	530,651	556,022	555,508	518,985
In transit to publishers.....do.....	99,741	87,887	81,258	89,767	93,225	85,618

^r/ Revised. ^p/ Preliminary. ^{1/} See note on corresponding item and the April 1953 Survey. ^{2/} Data for March 1952 and March 1953 cover 5 weeks; December 1952, 6 weeks; other months, 4 weeks.

MONTHLY BUSINESS STATISTICS—Continued

Earlier data are available in monthly issues of the Survey and the 1951 Statistical Supplement	1952			1953		
	February	March	December	January	February	March
STONE, CLAY, AND GLASS PRODUCTS						
Clay products:						
Brick, unglazed:						
Production.....thous. of standard brick..	392,482	434,789	436,508	391,241	377,166
Shipments.....do....	378,321	411,819	383,597	353,088	375,051
Clay sewer pipe, vitrified:						
Production.....short tons..	127,442	139,685	135,309	113,227	124,673
Shipments.....do....	97,107	118,092	98,131	94,920	106,651
Structural tile, unglazed:						
Production.....do....	78,061	76,119	78,823	81,541	73,976
Shipments.....do....	75,617	69,494	66,270	63,050	68,020
Glass containers:						
Production.....thous. of gross..	8,783	9,400	8,250	9,293	9,000	10,697
Shipments.....do....	8,053	9,005	7,889	8,602	8,510	12,081
Stocks, end of month.....do....	10,093	10,216	10,166	10,427	10,677	9,056
TEXTILE PRODUCTS						
Wool: 1/						
Consumption (scoured basis):						
Apparel class.....thous. of lb..	24,756	23,924	26,984	34,360	29,784
Carpet class.....do....	9,720	9,252	11,688	13,690	12,684
Machinery activity (weekly average):						
Looms:						
Woolen and worsted:						
Pile and jacquard.....thous. of active hours..	139	147	159	160	169
Broad.....do....	1,735	1,592	1,935	1,867	1,932
Narrow.....do....	18	19	17	18	20
Carpet and rug:						
Broad.....do....	126	128	144	138	163
Narrow.....do....	50	51	56	47	54
Spinning spindles:						
Woolen.....do....	73,268	67,953	71,199	69,128	73,998
Worsted.....do....	74,786	72,644	81,630	81,597	91,359
Worsted combs.....do....	121	119	146	147	161
Yarn, production, total.....thous. of lb..	53,472	50,984	54,448	64,560	57,060
Knitting.....do....	6,092	5,356	5,772	6,970	6,508
Weaving.....do....	35,768	34,056	35,076	42,175	36,288
Carpet and other.....do....	11,612	11,572	13,600	15,415	14,264
TRANSPORTATION EQUIPMENT						
Railway equipment (American Railway Car Institute):						
Shipments:						
Freight cars, total.....number..	7,383	8,161	7,968	8,103	7,789	6,685
Equipment manufacturers, total.....do....	5,494	5,840	5,893	6,094	6,072	4,958
Domestic.....do....	5,494	5,838	5,769	5,972	6,063	4,952
Railroad shops, domestic.....do....	1,889	2,321	2,075	2,009	1,717	1,727
Passenger cars, total.....do....	21	4	20	15	17	39
Equipment manufacturers, total.....do....	21	4	20	15	17	39
Domestic.....do....	10	4	20	15	17	39
Railroad shops, domestic.....do....	0	0	0	0	0	0

1/ Revised. 1/ Data for January 1953 cover 5 weeks; other months, 4 weeks.

UNITED STATES
GOVERNMENT PRINTING OFFICE
DIVISION OF PUBLIC DOCUMENTS
WASHINGTON 25, D. C.

FIRST CLASS

OFFICIAL BUSINESS
Permit No. 1009

PENALTY FOR PRIVATE USE TO AVOID
PAYMENT OF POSTAGE, \$300

WEEKLY SUPPLEMENT
SURVEY OF CURRENT BUSINESS