



SURVEY OF CURRENT BUSINESS WEEKLY SUPPLEMENT

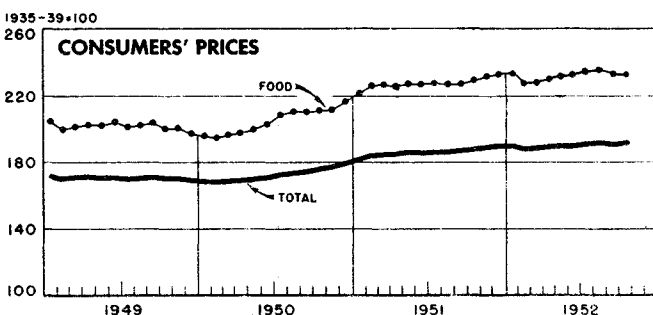
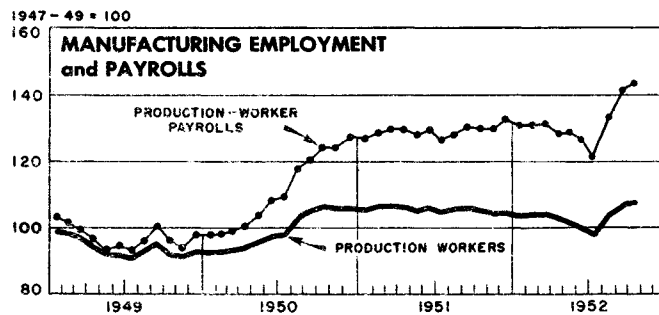
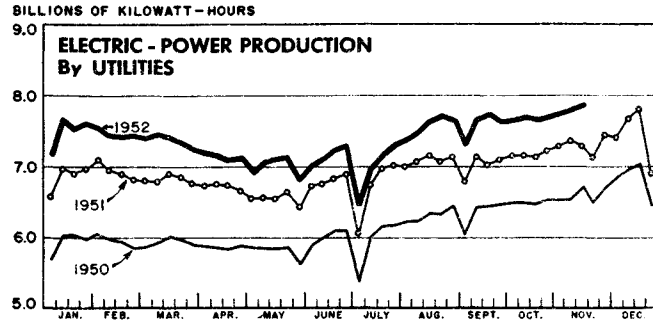
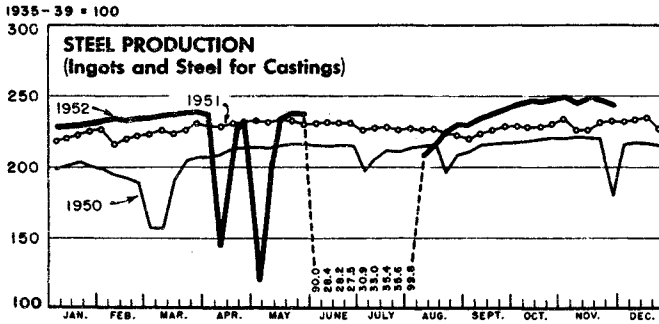


UNITED STATES DEPARTMENT OF COMMERCE
OFFICE OF BUSINESS ECONOMICS

Available only with subscription to the monthly magazine SURVEY OF CURRENT BUSINESS

NOVEMBER 28, 1952

SELECTED BUSINESS INDICATORS



WEEKLY BUSINESS STATISTICS¹

ITEM	1951		1952				
	Nov. 17	Nov. 24	Oct. 18	Nov. 1	Nov. 8	Nov. 15	Nov. 22
Commodity prices, wholesale:							
All commodities.....1947-49=100..	*113.6	**111.2	110.0	110.7	110.4
Farm products.....do.....	*112.0	**104.9	104.7	104.3	102.6
Foods, processed.....do.....	*111.0	**108.5	105.5	106.3	105.6
All other.....do.....	*114.5	**113.1	112.1	113.0	113.0
22 commodities (revised series) ^{2/}do.....	110.1	109.5	92.6	90.9	#91.6	#91.7	91.5
Cotton, middling, 15/16", 10 markets ^{3/}dol. per lb..	.420	.419	.360	.353	.356	.350	.342
Wheat, No. 2, hard winter (Kansas City) ^{3/}dol. per bu..	2.54	2.54	2.43	2.46	2.46	2.47	2.48
Department store sales.....1947-49=100..	130	123	122	115	118	131
Insured unemployment, total.....thous..	922	1,012	675	682	690
State programs.....do.....	889	979	643	640	647
Finance:							
Currency in circulation ^{3/}mil. of dol..	28,580	28,682	29,529	29,583	29,773	29,897	29,880
Federal Reserve bank credit, total.....do.....	24,602	24,745	25,867	25,505	25,714	25,696	26,193
Member bank reserve balances.....do.....	19,850	19,843	20,779	20,449	20,334	20,447	20,736
Excess reserves, estimated.....do.....	874	632	791	523	486	608	752
Federal Reserve reporting member banks in leading cities:							
Bank debits, total.....mil. of dol..							
Bank debits, total.....do.....	23,838	30,833	32,656	28,277	27,864	25,574
New York City.....do.....	8,698	11,996	13,220	11,486	11,093	9,794	12,786
Deposits, demand, adjusted.....do.....	52,249	52,357	53,216	53,586	53,040	53,312
Loans and investments, total.....do.....	72,526	72,652	76,937	76,985	77,028	76,997
U. S. Government obligations.....do.....	31,457	31,524	32,431	32,361	32,292	32,015
Commercial, industrial, and agr. loans (gross).....do.....	20,848	20,872	22,153	22,274	22,484	22,727
Failures, industrial and commercial.....number..	109	149	154	136	143	148	167
Bond yields, domestic corporate (Moody's) ^{3/}percent..	3.19	3.20	3.23	3.22	3.22	3.21	3.20
Stock prices, 480 stocks (Standard and Poor's).....1935-39=100..	179.4	177.5	180.6	182.4	186.6	187.1	191.7
Industrials, 420 stocks.....do.....	195.4	193.0	195.1	197.1	202.1	202.4	207.6
Production:							
Bituminous coal ^{3/}thous. of short tons..	2,000	2,032	358	1,537	1,800	1,821
Electric power, by utilities.....mil. of kw.-hr..	7,333	7,157	7,696	7,753	7,807	7,884
Motor vehicles (Ward's).....number..	112,817	78,110	135,929	146,654	134,254	137,903	124,164
Petroleum, crude ^{3/}thous. of bbl..	6,151	6,145	6,461	6,471	6,535	6,543
Steel ^{4/}1935-39=100..	226.4	232.2	248.7	249.7	246.4	248.0	246.9
Freight car loadings, total.....thous. of cars..	814	711	761	862	829	829
Miscellaneous.....do.....	392	343	419	420	398	394

^{1/} Data do not always cover calendar weeks. ^{2/} Tuesday prices. ^{3/} Daily averages. ^{4/} Week ending November 29, 244.5. * Monthly index for November 1951. ** Monthly index for October 1952. # Wednesday price.

MONTHLY BUSINESS STATISTICS

Earlier data are available in monthly issues of the Survey and the 1951 Statistical Supplement	1951		1952			
	September	October	July	August	September	October
BUSINESS POPULATION						
Industrial and commercial failures:						
Failures, total.....number..	620	643	580	594	539	631
Commercial service.....do....	39	57	41	51	36	52
Construction.....do.....	84	85	48	58	50	88
Manufacturing and mining.....do....	150	150	133	109	107	146
Retail trade.....do.....	277	304	299	316	288	291
Wholesale trade.....do.....	70	47	59	60	58	54
Liabilities, total.....thous. of dol..	26,643	29,742	22,789	16,322	20,138	35,049
Commercial service.....do.....	782	2,044	1,466	1,809	947	2,175
Construction.....do.....	4,668	1,937	3,196	1,816	2,729	5,167
Manufacturing and mining.....do....	14,908	12,219	8,882	5,056	6,780	13,079
Retail trade.....do.....	4,826	6,707	5,434	5,255	5,317	6,078
Wholesale trade.....do.....	1,459	6,835	3,811	2,386	4,365	8,550
COMMODITY PRICES						
Consumers' price index, all items.....1935-39=100..	186.6	187.4	190.8	191.1	190.8	<u>1</u> /190.9
Apparel.....do.....	209.0	208.9	201.4	201.1	202.3	202.1
Food.....do.....	227.3	229.2	234.9	235.5	233.2	232.4
Cereals and bakery products.....do....	189.4	189.4	194.4	194.2	194.1	194.3
Dairy products.....do.....	206.4	207.9	212.3	213.8	216.7	218.1
Fruits and vegetables.....do.....	205.1	210.8	253.2	242.3	227.6	227.3
Meats, poultry, and fish.....do....	275.6	276.6	270.4	277.3	277.0	271.5
Fuels, electricity, and refrigeration.....do....	144.4	144.6	146.4	147.3	147.6	148.4
Gas and electricity.....do.....	97.3	97.4	98.3	99.0	99.0	99.0
Other fuels.....do.....	204.9	205.8	208.4	209.0	210.1	212.8
Housefurnishings.....do.....	211.1	210.4	204.2	204.2	205.0	204.6
Rent.....do.....	137.5	138.2	141.9	142.3	142.4	143.0
Miscellaneous.....do.....	166.0	166.6	173.0	173.2	173.8	174.4
CONSTRUCTION AND REAL ESTATE						
Contract awards:						
37 States (F. W. Dodge Corp.):						
Total projects.....number..	42,435	42,735	52,078	52,909	47,006	50,542
Total valuation.....thous. of dol..	1,082,855	1,051,419	1,511,285	1,438,725	2,039,203	1,300,958
Building, total.....do.....	884,178	914,450	1,170,764	1,147,536	1,790,838	1,062,833
Engineering construction, value (E.N.R.) <u>2</u> /.....do....	917,158	1,026,973	2,310,504	2,210,600	952,200	1,446,400
Construction cost indexes (Engineering News-Record):						
Building <u>3</u> /.....do.....1947-49=100..	119.3	119.6	124.9	125.6	125.6	126.0
Construction <u>3</u> /.....do.....	120.6	120.8	128.9	129.5	129.9	129.9
DOMESTIC TRADE						
Mail-order and store sales, total, 2 companies.thous.of dol..	338,278	374,319	304,313	351,558	373,724	418,732
Montgomery Ward & Co.....do....	100,873	117,371	82,995	101,150	102,462	118,142
Sears, Roebuck and Co.....do....	237,405	256,949	221,318	250,409	271,262	300,590
EMPLOYMENT AND WAGES						
Employees in nonagricultural establishments:						
Total, unadjusted.....thousands..	46,956	46,902	r46,006	r47,106	r47,693	p47,705
Manufacturing.....do.....	16,039	15,965	r15,162	r16,015	r16,361	p16,406
Mining.....do.....	917	917	784	887	r874	p858
Contract construction.....do....	2,768	2,761	r2,722	r2,783	r2,763	p2,686
Transportation and public utilities.....do....	4,178	4,166	r4,140	r4,201	r4,217	p4,220
Trade.....do.....	9,781	9,893	r9,792	r9,795	r9,970	p10,084
Finance.....do.....	1,898	1,898	r1,993	r1,993	r1,972	p1,971
Service.....do.....	4,831	4,770	r4,855	r4,843	r4,824	p4,766
Government.....do.....	6,544	6,532	6,558	6,589	6,712	p6,714
Production workers in manufacturing industries:						
Total.....do.....	13,087	12,997	r12,061	r12,874	r13,218	p13,254
Durable goods industries.....do....	7,279	7,296	r6,559	r7,134	r7,389	p7,487
Ordnance and accessories.....do....	44	47	60	59	r61	p62
Lumber and wood products (except furniture).....do....	745	740	r709	r721	r716	p703
Furniture and fixtures.....do....	285	289	r285	293	r301	p305
Stone, clay, and glass products.....do....	482	479	441	r459	r463	p462
Primary metal industries.....do....	1,162	1,160	r676	r1,109	r1,147	p1,147
Fabricated metal products (except ordnance, machinery, and transportation equipment).....thousands..	810	809	r726	r767	r803	p819
Machinery (except electrical).....do....	1,219	1,242	r1,203	r1,194	r1,197	p1,211
Electrical machinery.....do.....	707	707	r685	r708	r743	p768
Transportation equipment.....do....	1,211	1,205	r1,169	r1,197	r1,309	p1,344
Instruments and related products.....do....	226	228	r230	r233	r237	p243
Miscellaneous manufacturing industries.....do....	388	390	r375	r394	r412	p423
Nondurable-goods industries.....do....	5,808	5,701	r5,502	r5,740	r5,829	p5,767
Food and kindred products.....do....	1,330	1,254	r1,215	r1,279	r1,311	p1,216
Tobacco manufactures.....do.....	89	89	78	r87	90	p91
Textile-mill products.....do....	1,136	1,133	1,081	1,123	r1,142	p1,154
Apparel and other finished textile products.....do....	1,037	1,019	r982	r1,049	r1,063	p1,060
Paper and allied products.....do....	416	413	395	r409	r410	p417
Printing, publishing, and allied industries.....do....	515	517	507	508	r514	p522
Chemicals and allied products.....do....	543	544	r511	r513	r526	p534
Products of petroleum and coal.....do....	197	197	r191	r202	201	p200
Rubber products.....do.....	218	215	r202	r212	r217	p221
Leather and leather products.....do....	327	320	r340	r358	r355	p352

1/ Revised. 2/ Preliminary. 3/ Index on old basis for October 1952 is 191.5. 2/ Data for July and October 1952 are for 5 weeks; other months, 4 weeks. 3/ Data reported at the beginning of each month are shown here for the previous month.

MONTHLY BUSINESS STATISTICS—Continued

Earlier data are available in monthly issues of the Survey and the 1951 Statistical Supplement	1951		1952			
	September	October	July	August	September	October
EMPLOYMENT AND WAGES - Continued						
Manufacturing production-worker employment index:						
Unadjusted (U. S. Department of Labor).....1947-49=100..	105.8	105.1	97.5	r104.1	r106.9	p107.2
Adjusted (Federal Reserve).....do.....	103.9	103.4	99.2	r103.3	r105.1	p105.5
Manufacturing production-worker payroll index, unadjusted (U. S. Department of Labor).....1947-49=100..						
	130.9	129.8	121.1	r133.3	r141.5	p143.1
Hours and earnings:						
Average weekly hours per worker, all manufacturing..hours..						
Durable-goods industries.....do.....	40.6	40.5	39.9	40.6	r41.3	p41.5
Nondurable-goods industries.....do.....	41.6	41.7	r40.2	r41.1	r42.0	p42.4
Average weekly earnings, all manufacturing.....dollars..	39.4	38.9	r39.5	39.9	40.3	p40.3
Durable-goods industries.....do.....	65.49	65.41	65.76	67.80	r70.09	p70.80
Nondurable-goods industries.....do.....	71.01	71.10	r69.67	r72.71	r76.06	p77.30
Average hourly earnings, all manufacturing.....do.....	58.67	58.00	r61.03	61.57	62.30	p62.30
Durable-goods industries.....do.....	1.613	1.615	1.648	1.670	r1.697	p1.706
Ordnance and accessories.....do.....	1.707	1.705	r1.733	r1.769	r1.811	p1.823
Lumber and wood products (except furniture).....do.....	1.730	1.716	r1.786	r1.788	r1.850	p1.841
Furniture and fixtures.....do.....	1.515	1.509	r1.543	r1.585	r1.597	p1.599
Stone, clay, and glass products.....do.....	1.421	1.420	r1.453	r1.460	r1.483	p1.481
Primary metal industries.....do.....	1.584	1.581	r1.615	r1.630	r1.654	p1.682
Fabricated metal products (except ordnance, machinery, and transportation equipment).....dollars..	1.835	1.816	r1.820	r1.932	r2.003	p2.014
Machinery (except electrical).....do.....	1.682	1.688	1.700	1.724	r1.764	p1.778
Electrical machinery.....do.....	1.788	1.794	r1.838	1.845	r1.866	p1.877
Transportation equipment.....do.....	1.640	1.645	r1.702	r1.710	r1.724	p1.732
Instruments and related products.....do.....	1.884	1.886	r1.921	r1.949	r2.017	p2.030
Miscellaneous manufacturing industries.....do.....	1.657	1.661	r1.732	r1.734	r1.759	p1.767
Nondurable-goods industries.....do.....	1.426	1.433	r1.484	r1.494	r1.512	p1.513
Food and kindred products.....do.....	1.489	1.491	1.545	1.543	1.546	p1.546
Tobacco manufactures.....do.....	1.450	1.474	r1.547	r1.540	r1.522	p1.545
Textile-mill products.....do.....	1.133	1.141	r1.220	r1.211	r1.198	p1.194
Apparel and other finished textile products.....do.....	1.321	1.325	1.345	r1.348	r1.358	p1.365
Paper and allied products.....do.....	1.289	1.263	r1.270	r1.292	1.299	p1.272
Printing, publishing, and allied industries.....do.....	1.532	1.537	r1.613	r1.608	r1.627	p1.639
Chemicals and allied products.....do.....	1.982	1.976	r2.076	r2.076	r2.094	p2.093
Products of petroleum and coal.....do.....	1.641	1.631	r1.727	1.729	r1.720	p1.718
Rubber products.....do.....	2.010	1.998	r2.132	r2.148	r2.170	p2.157
Leather and leather products.....do.....	1.716	1.704	r1.822	r1.815	r1.827	p1.781
	1.279	1.280	r1.299	r1.318	r1.329	p1.333
FINANCE						
Federal Government finance:						
Receipts, treasury, total.....mil. of dol..	6,524	2,708	3,649	4,585	6,875	3,355
Receipts, net.....do.....	6,209	2,635	3,316	4,050	6,585	3,099
Customs.....do.....	42	52	48	47	52	65
Income and employment taxes.....do.....	5,691	1,653	2,464	3,546	5,834	2,227
Miscellaneous internal revenue.....do.....	707	385	949	862	877	923
Expenditures, total.....do.....	5,163	5,483	6,742	5,018	6,070	6,383
Interest on debt.....do.....	580	497	320	183	559	572
National defense and related activities.....do.....	2,628	3,166	3,884	2,971	4,008	3,723
Bonds, price (Standard and Poor's Corporation):						
Industrial, utility, and railroad (A1+ issues):						
Composite (17 bonds).....dol. per \$100 bond..	118.0	116.9	116.0	115.8	115.7	114.7
CHEMICALS AND ALLIED PRODUCTS						
Superphosphate (bulk):						
Production.....short tons..	811,543	923,966	926,657	r957,418	925,139
Stocks, end of month.....do.....	1,243,304	1,183,481	1,366,549	r1,424,214	1,404,555
Paints, varnish and lacquer: 1/						
Factory shipments, total.....thous. of dol..	110,040	111,093	r113,282	117,751
Industrial sales.....do.....	38,655	36,808	r40,974	44,262
Trade sales.....do.....	61,385	74,285	72,308	73,529
FOODSTUFFS						
Stocks, cold storage, end of month:						
Apples, fresh.....thous. of bu..	7,684	28,375	153	238	r6,221	26,844
Butter, creamery.....thous. of lb..	113,501	94,611	99,751	111,400	r111,319	101,574
Cheese, total.....do.....	272,053	259,415	239,632	253,563	r262,467	252,123
Fruits, frozen.....do.....	599,766	571,229	593,518	578,699	r556,897	534,561
Vegetables, frozen.....do.....	515,766	554,175	385,494	463,011	r530,091	571,122
Eggs: Shell.....thous. of cases..	958	527	2,728	2,169	r1,769	992
Frozen.....thous. of lb..	151,293	121,592	163,359	144,326	r123,661	95,032
Meats, total.....do.....	521,665	499,293	850,405	701,062	r587,234	550,965
Beef and veal.....do.....	102,301	135,560	171,444	167,437	r184,158	210,086
Lamb and mutton.....do.....	7,227	9,767	11,814	11,318	r12,553	12,450
Pork, excluding lard.....do.....	325,959	276,255	542,707	407,558	r290,931	231,543
Lard.....do.....	28,372	31,344	132,583	124,296	r109,157	88,035
Poultry.....do.....	166,242	259,920	157,045	144,508	r182,786	277,200
Coffee, visible supply, United States.....thous. of bags..	619	736	579	605	889	611
LEATHER						
Leather production:						
Calf and kip.....thous. of skins..	490	605	685	914	967
Cattle hide.....thous. of hides..	1,646	1,861	1,610	r1,910	1,879
Goat and kid.....thous. of skins..	1,842	2,019	2,595	2,293	2,381
Sheep and lamb.....do.....	1,672	2,137	1,911	2,718	2,555

r/ Revised. p/ Preliminary. 1/ See note on corresponding item in the November 1952 Survey.

MONTHLY BUSINESS STATISTICS—Continued

Earlier data are available in monthly issues of the Survey and the 1951 Statistical Supplement	1951		1952			
	September	October	July	August	September	October
METALS AND MANUFACTURES						
Iron ore (Lake Superior district):						
Shipments from upper lake ports.....thous. of long tons..	12,672	11,089	1,904	14,368	14,389	13,013
Consumption by furnaces.....do.....	7,473	7,749	1,544	7,243	7,659	8,048
Stocks, end of month, total.....do.....	45,451	50,229	27,388	34,137	41,532	47,839
At furnaces.....do.....	39,501	43,425	22,904	29,449	36,206	41,699
On Lake Erie docks.....do.....	5,950	6,804	4,484	4,688	5,326	6,140
Castings, gray iron:						
Orders, unfilled, for sale.....thous. of short tons..	2,055	1,983	1,410	r1,513	1,451
Shipments, total.....do.....	1,115	1,302	636	r1,002	1,119
For sale.....do.....	626	733	432	r602	626
Castings, malleable iron:						
Orders, unfilled, for sale.....short tons..	244,575	238,019	166,517	162,832	168,367
Shipments, total.....do.....	82,276	93,884	45,266	63,716	75,950
For sale.....do.....	48,568	58,251	29,675	39,308	45,849
Castings, steel:						
Shipments, total.....do.....	160,695	189,929	119,036	150,232	158,392
For sale, total.....do.....	116,658	139,953	97,633	113,997	121,402
Railway specialties.....do.....	34,693	39,290	20,752	24,013	19,930
Copper:						
Production:						
Mine or smelter.....do.....	74,165	87,896	81,601	79,368	r82,426	84,353
Refinery.....do.....	74,354	104,148	96,049	95,366	98,930	105,770
Deliveries, refined, domestic.....do.....	121,879	125,286	r115,384	r127,910	r135,486	136,964
Stocks, refined, end of month.....do.....	62,093	78,192	73,657	83,771	71,456	59,760
Lead, refined (primary refineries):						
Production.....do.....	30,474	34,273	37,489	41,836	42,791	51,521
Shipments (domestic).....do.....	31,654	31,164	51,534	45,499	49,850	43,150
Stocks, end of month.....do.....	23,640	26,742	44,140	39,767	31,837	37,718
Machine tools:						
New orders.....1945-47=100..	380.2	403.9	r376.3	r311.1	r302.4	243.7
Shipments.....do.....	189.8	221.3	r259.7	r317.0	r368.3	357.6
Radio sets, production <u>1</u> /.....number..	1,100,246	874,723	441,736	543,802	865,654	832,401
Television sets (including combination), production <u>1</u> /do....	337,341	411,867	198,921	397,769	755,665	813,724
TEXTILE PRODUCTS						
Cotton: <u>2</u> /						
Consumption.....bales..	721,248	r906,750	692,594	744,383	736,248	915,593
Manufactures, spindle activity (cotton system spindles):						
Active spindles, last working day, total.....thousands..	21,895	21,609	21,325	21,398	21,432	21,612
Consuming 100 percent cotton.....do.....	20,714	20,394	19,948	20,000	20,041	20,215
Spindle hours operated, all fibers, total...mil. of hr..	9,247	11,393	9,112	9,516	9,768	12,341
Average per working day.....do.....	474	460	380	476	501	499
Consuming 100 percent cotton.....do.....	8,745	10,721	8,501	8,870	9,134	11,525
Operations as percent of capacity.....do.....	128	124	102	128	135	135
Rayon: Consumption:						
Filament yarn.....mil. of lb..	57.1	56.4	83.1	84.7	r81.0	75.5
Staple fiber.....do.....	24.8	26.0	26.9	r28.1	r26.7	24.0
Stocks, producers', end of month:						
Filament yarn.....do.....	54.2	73.2	65.1	57.7	54.8	58.4
Staple fiber.....do.....	8.7	9.4	15.9	15.0	15.6	17.7

r/ Revised. 1/ Data for September 1951 and 1952 cover 5 weeks; other months, 4 weeks. 2/ Data for October 1951, July and October 1952 cover 5 weeks; other months, 4 weeks.

UNITED STATES
GOVERNMENT PRINTING OFFICE
DIVISION OF PUBLIC DOCUMENTS
WASHINGTON 25, D. C.

FIRST CLASS

PENALTY FOR PRIVATE USE TO AVOID
PAYMENT OF POSTAGE, \$300

OFFICIAL BUSINESS
Permit No. 1009

WEEKLY SUPPLEMENT
SURVEY OF CURRENT BUSINESS