



SURVEY OF CURRENT BUSINESS WEEKLY SUPPLEMENT



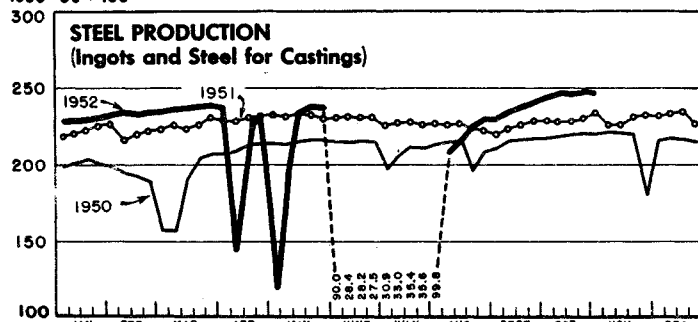
UNITED STATES DEPARTMENT OF COMMERCE
OFFICE OF BUSINESS ECONOMICS

Available only with subscription to the monthly magazine SURVEY OF CURRENT BUSINESS

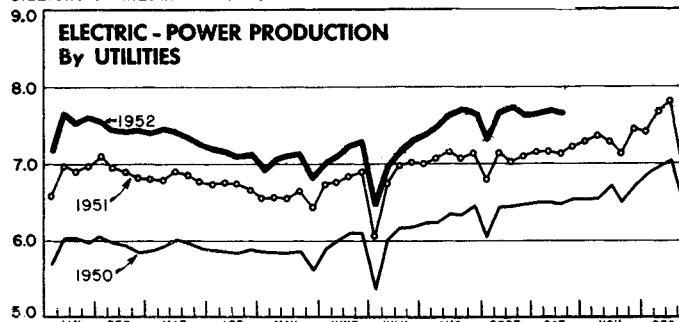
October 31, 1952

SELECTED BUSINESS INDICATORS

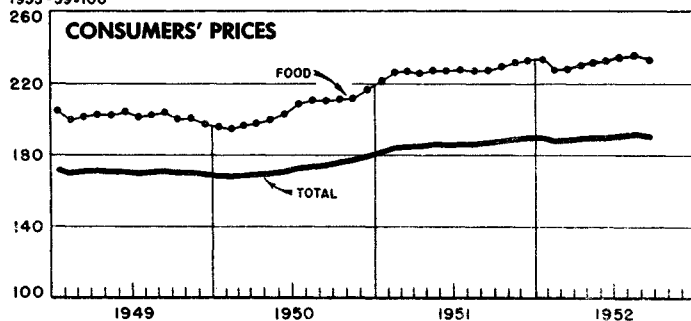
1935-39 = 100



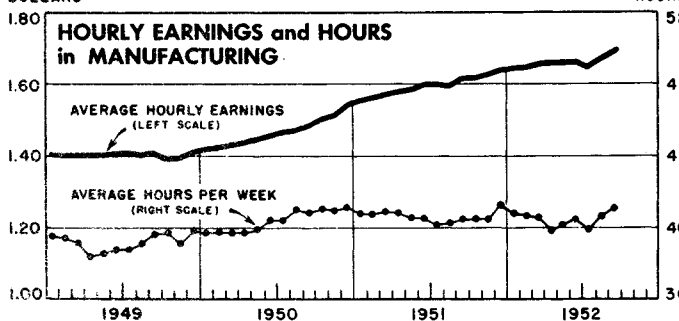
BILLIONS OF KILOWATT-HOURS



1935-39=100



DOLLARS



WEEKLY BUSINESS STATISTICS¹

ITEM	1951		1952				
	Oct. 20	Oct. 27	Sept. 27	Oct. 4	Oct. 11	Oct. 18	Oct. 25
Commodity prices, wholesale:							
All commodities.....1947-49=100..	*113.7	**111.7	111.1	110.7	110.6
Farm products.....do....	*111.5	**106.4	106.6	104.6	105.1
Foods, processed.....do....	*111.6	**110.5	108.5	108.1	107.4
All other.....do....	*114.6	**113.1	112.6	112.6	112.5
28 commodities ^{2/}August 1939=100..	329.7	329.4	290.4	288.7	287.0	284.6	282.2
Cotton, middling, 15/16", 10 markets ^{3/}dol. per lb..	.367	.371	.386	.383	.377	.365	.360
Wheat, No. 2, hard winter (Kansas City) ^{3/}dol. per bu..	2.47	2.48	2.42	2.41	2.41	2.38	2.43
Department store sales.....1947-49=100..	116	113	112	116	126	124
Insured unemployment, total.....thous..	872	875	665	655
State programs.....do....	851	853	637	627
Finance:							
Currency in circulation ^{3/}mil. of dol..	28,407	28,334	29,303	29,462	29,576	29,610	29,529
Federal Reserve bank credit, total.....do....	25,117	24,841	24,857	24,963	25,384	25,325	25,867
Member bank reserve balances.....do....	20,068	19,833	20,581	20,098	20,239	20,613	20,779
Excess reserves, estimated.....do....	1,118	689	747	356	662	591	791
Federal Reserve reporting member banks in leading cities:							
Bank debits, total.....mil. of dol..	25,680	26,568	28,693	29,997	27,367	26,318
New York City.....do....	9,514	9,927	11,296	12,450	11,091	10,133	13,220
Deposits, demand, adjusted.....do....	51,323	52,251	52,274	52,317	52,167	52,651
Loans and investments, total.....do....	71,508	72,606	75,532	75,773	77,382	77,629
U. S. Government obligations.....do....	30,976	31,940	31,685	31,579	33,077	32,848
Commercial, industrial, and agr. loans (gross).....do....	20,489	20,472	21,606	21,671	21,808	22,054
Failures, industrial and commercial.....number..	157	155	156	129	147	139	154
Bond yields, domestic corporate (Moody's) ^{3/}percent..	3.12	3.15	3.20	3.21	3.21	3.22	3.23
Stock prices, 480 stocks (Standard and Poor's).....1935-39=100..	187.5	182.0	187.8	185.6	185.8	182.6	180.6
Industrials, 420-stocks.....do....	205.2	198.7	203.6	201.1	201.3	197.5	195.1
Production:							
Bituminous coal ^{3/}thous. of short tons..	1,904	1,938	1,672	1,513	1,508	1,387
Electric power, by utilities.....mil. of kw.-hr..	7,149	7,234	7,625	7,665	7,698	7,681
Motor vehicles (Ward's).....number..	114,347	114,579	132,624	134,671	129,107	130,872	136,335
Petroleum, crude ^{3/}thous. of bbl..	6,271	6,257	6,431	6,438	6,441	6,450
Steel ^{4/}1935-39=100..	228.6	230.4	242.0	245.9	248.0	247.8	248.7
Freight car loadings, total.....thous. of cars..	887	864	862	852	843	838
Miscellaneous.....do....	428	414	414	416	416	423

^{1/} Data do not always cover calendar weeks. ^{2/} Thursday prices. ^{3/} Daily averages. ^{4/} Week ending November 1, 246.4 * Monthly index for October 1951. ** Monthly index for September 1952.

MONTHLY BUSINESS STATISTICS

Earlier data are available in monthly issues of the Survey and the 1951 Statistical Supplement	1951		1952			
	August	September	June	July	August	September
BUSINESS POPULATION						
Industrial and commercial failures:						
Failures, total.....number..	678	620	671	580	594	539
Commercial service.....do....	56	39	52	41	51	36
Construction.....do.....	89	84	78	48	58	50
Manufacturing and mining.....do....	136	150	128	135	109	107
Retail trade.....do.....	333	277	340	299	316	288
Wholesale trade.....do.....	64	70	73	59	60	58
Liabilities, total.....thous. of dol..	26,417	25,643	21,222	22,789	16,322	20,138
Commercial service.....do.....	1,358	782	1,971	1,466	1,809	947
Construction.....do.....	4,290	4,668	2,990	3,196	1,816	2,729
Manufacturing and mining.....do....	10,497	14,908	6,971	8,882	5,056	6,780
Retail trade.....do.....	6,173	4,826	7,024	5,434	5,255	5,317
Wholesale trade.....do.....	4,099	1,459	2,266	3,811	2,386	4,365
COMMODITY PRICES						
Consumers' price index, all items.....1935-39=100..	185.5	186.6	189.6	190.8	191.1	<u>190.8</u>
Apparel.....do.....	203.6	209.0	202.0	201.4	201.1	202.3
Food.....do.....	227.0	227.3	231.5	234.9	235.5	233.2
Cereals and bakery products.....do....	188.7	189.4	193.3	194.4	194.2	194.1
Dairy products.....do.....	205.9	206.4	209.8	212.3	213.8	216.7
Fruits and vegetables.....do.....	208.9	205.1	250.0	253.2	242.3	227.6
Meats, poultry, and fish.....do....	275.0	275.6	270.6	270.4	277.3	277.0
Fuels, electricity, and refrigeration.....do....	144.2	144.4	144.8	146.4	147.3	147.6
Gas and electricity.....do.....	97.3	97.3	96.4	96.3	99.0	99.0
Other fuels.....do.....	204.2	204.9	203.4	208.4	209.0	210.1
Housefurnishings.....do.....	210.8	211.1	204.4	204.2	204.2	205.0
Rent.....do.....	136.8	137.5	141.6	141.9	142.3	142.4
Miscellaneous.....do.....	165.4	166.0	172.5	173.0	173.2	173.8
EMPLOYMENT						
Hours and earnings:						
Average weekly hours per worker, all manufacturing..hours..	40.3	40.6	r40.5	39.9	r40.6	p41.1
Durable-goods industries.....do....	41.3	41.6	r41.2	r40.4	r41.2	p41.8
Nondurable-goods industries.....do....	39.1	39.4	r39.5	39.4	r39.9	p40.3
Average weekly earnings, all manufacturing.....dollars..	64.32	65.49	r67.15	r65.76	67.80	p69.58
Durable-goods industries.....do....	69.55	71.01	r71.98	70.05	r72.92	p75.45
Nondurable-goods industries.....do....	57.91	58.67	r60.83	60.87	r61.57	p62.30
Average hourly earnings, all manufacturing.....do.....	1.596	1.613	r1.658	r1.648	r1.670	p1.693
Durable-goods industries.....do....	1.684	1.707	r1.747	1.734	r1.770	p1.805
Ordnance and accessories.....do....	1.679	1.730	r1.787	r1.799	r1.801	p1.847
Lumber and wood products (except furniture).....do....	1.479	1.515	r1.534	r1.532	r1.573	p1.583
Furniture and fixtures.....do.....	1.410	1.421	r1.464	r1.432	r1.459	p1.481
Stone, clay, and glass products.....do....	1.560	1.584	r1.616	r1.619	r1.634	p1.655
Primary metal industries.....do....	1.802	1.835	r1.830	r1.824	r1.937	p1.991
Fabricated metal products (except ordnance, machinery, and transportation equipment).....dollars..	1.663	1.682	1.716	r1.700	r1.724	p1.763
Machinery (except electrical).....do....	1.765	1.788	r1.847	r1.837	r1.845	p1.871
Electrical machinery.....do.....	1.626	1.640	1.705	1.707	r1.716	p1.736
Transportation equipment.....do....	1.867	1.884	r1.944	r1.922	r1.948	p2.005
Instruments and related products.....do....	1.635	1.657	r1.730	r1.731	r1.733	p1.748
Miscellaneous manufacturing industries.....do....	1.417	1.426	r1.489	r1.481	r1.491	p1.501
Nondurable-goods industries.....do....	1.481	1.489	r1.540	1.545	r1.543	p1.546
Food and kindred products.....do....	1.456	1.450	r1.552	r1.546	r1.539	p1.532
Tobacco manufactures.....do.....	1.145	1.133	r1.211	r1.218	r1.210	p1.175
Textile-mill products.....do.....	1.310	1.321	r1.344	r1.345	r1.349	p1.357
Apparel and other finished textile products.....do....	1.288	1.269	r1.247	r1.269	r1.291	p1.299
Paper and allied products.....do....	1.522	1.532	r1.597	1.619	r1.616	p1.625
Printing, publishing, and allied industries.....do....	1.952	1.982	r2.056	r2.069	r2.069	p2.088
Chemicals and allied products.....do....	1.643	1.641	r1.719	r1.726	r1.729	p1.705
Products of petroleum and coal.....do....	1.984	2.010	r2.082	r2.134	r2.150	p2.171
Rubber products.....do.....	1.708	1.716	r1.834	r1.831	r1.823	p1.826
Leather and leather products.....do....	1.269	1.279	r1.310	r1.298	r1.316	p1.331
FOREIGN TRADE						
Exports, including reexports, total <u>2</u>mil. of dol..	1,269	1,232	1,164	1,015	1,070
Exports of U. S. merchandise, total <u>2</u>do.....	1,260	1,222	1,152	1,003	1,061
By economic classes:						
Crude materials.....thous. of dol..	152,392	207,568	142,627	87,049	114,755
Crude foodstuffs.....do.....	118,190	106,397	102,165	72,353	79,566
Manufactured foodstuffs and beverages.....do....	78,471	65,570	58,618	59,376	48,961
Semimanufactures.....do.....	149,517	145,234	129,620	106,167	115,367
Finished manufactures.....do.....	761,147	696,890	719,150	675,614	701,977
By principal commodities:						
Agricultural products, total.....do....	276,985	307,785	243,173	169,534	186,086
Cotton, unmanufactured.....do....	32,139	70,787	55,740	10,287	21,048
Grains and preparations.....do....	128,156	116,055	107,312	84,668	82,284
Nonagricultural products, total.....do....	982,732	913,875	909,007	833,025	874,534
Automobiles, parts, and accessories <u>2</u>do....	103,270	101,188	89,248	69,854	55,944
Chemicals and related products <u>2</u>do....	91,811	85,636	65,073	60,313	62,549
Iron and steel-mill products.....do....	48,614	54,605	50,779	29,866	41,410
Machinery <u>2</u>do.....	217,108	193,725	231,876	212,764	204,495
Electrical <u>2</u>do.....	51,545	46,348	51,563	48,731	49,137
Petroleum and products.....do....	85,145	83,540	70,074	71,352	64,260
Textiles and manufactures.....do....	62,891	62,354	48,051	42,697	50,822

r/ Revised. p/ Preliminary. 1/ Index on old base for September 1952 is 191.4. 2/ See note on corresponding item in the October 1952 Survey.

Earlier data are available in monthly issues of the Survey and the 1951 Statistical Supplement	1951		1952			
	August	September	June	July	August	September
FOREIGN TRADE - Continued						
General imports, total.....thous. of dol..	880,769	721,260	860,240	836,043	817,000
Imports for consumption, total.....do....	893,365	746,036	857,259	835,114	815,445
By economic classes:						
Crude materials.....do....	289,173	237,621	243,288	213,860	209,826
Crude foodstuffs.....do....	145,470	122,047	149,603	149,360	144,482
Manufactured foodstuffs and beverages.....do....	88,646	76,219	94,516	97,012	97,640
Semimanufactures.....do....	205,000	169,268	199,645	199,799	201,379
Finished manufactures.....do....	165,076	140,880	170,207	175,083	162,117
By principal commodities:						
Agricultural products, total.....do....	414,698	333,806	344,843	328,522	337,172
Coffee.....do....	87,990	80,719	82,679	95,442	99,124
Rubber, crude, including guayule.....do....	76,837	59,570	52,132	32,558	40,999
Sugar.....do....	38,282	30,063	43,653	43,724	44,526
Wool and mohair, unmanufactured.....do....	57,816	34,142	23,339	27,645	24,060
Nonagricultural products, total.....do....	478,667	412,230	512,416	506,592	478,273
Nonferrous ores, metals, and manufactures.....do....	78,175	57,997	122,110	126,292	109,014
Paper base stocks.....do....	35,297	31,191	24,703	21,546	23,718
Newsprint.....do....	47,695	38,758	50,938	50,191	47,359
Petroleum and products.....do....	44,664	43,122	55,079	53,913	51,754
FOODSTUFFS						
Dairy products, production:						
Butter, creamery (factory).....thous. of lb..	119,020	93,638	131,055	122,490	r 108,320	94,885
Cheese (factory), total.....do....	111,452	93,991	139,475	122,300	r 112,370	99,235
Meats, production, total.....mil. of lb..	1,488	1,374	1,444	1,418	1,395	1,527
Beef and veal.....thous. of lb..	617,158	553,317	582,712	659,036	669,445	713,624
Lamb and mutton.....do....	39,369	36,652	41,392	38,601	43,880	52,839
Pork, including lard.....do....	831,556	784,336	819,934	720,191	681,587	760,409
Lard.....do....	158,700	149,769	160,274	141,823	127,696	138,047
Coffee, visible supply, United States.....thous. of bags..	591	619	691	579	605	889
Sugar, U. S., deliveries and supply (raw value):						
Production.....short tons..	27,762	98,067	46,465	34,190	9,971
Entries from off-shore.....do....	542,615	396,322	503,896	617,564	573,936	725,621
Hawaii and Puerto Rico.....do....	195,252	111,020	142,458	167,422	177,671	237,299
Deliveries, total.....do....	675,797	r 646,784	896,355	758,308	734,684	743,692
For domestic consumption.....do....	670,204	r 644,579	894,103	755,061	731,376	741,483
Stocks, raw and refined, end of mo.....thous. of short tons..	1,121	r 956	1,114	917	831	701
METALS AND MANUFACTURES						
Iron ore (Lake Superior district):						
Consumption by furnaces.....thous. of long tons..	7,699	7,473	1,403	1,544	7,243	7,659
Stocks, end of month, total.....do....	39,920	r 45,451	27,170	27,388	34,137	41,532
At furnaces.....do....	35,057	r 39,501	22,611	22,904	29,449	36,206
On Lake Erie docks.....do....	4,863	5,950	4,559	4,484	4,688	5,326
Castings, gray iron:						
Orders, unfilled, for sale.....thous. of short tons..	2,145	2,055	1,446	1,410	1,518
Shipments, total.....do....	1,219	1,115	835	636	1,003
For sale.....do....	698	626	502	432	603
Castings, malleable iron:						
Orders, unfilled, for sale.....short tons..	249,273	244,575	173,353	166,517	162,832
Shipments, total.....do....	90,727	82,276	74,446	45,266	63,715
For sale.....do....	57,164	48,568	46,511	29,675	39,308
Castings, steel:						
Shipments, total.....do....	177,096	160,695	141,628	119,036	150,232
For sale, total.....do....	128,981	116,658	114,410	97,633	113,997
Railway specialties.....do....	41,162	34,693	30,455	20,752	24,013
Steel products, net shipments:						
Total.....thous. of short tons..	6,756	6,207	1,250	1,414	6,312
Bars, hot rolled: Carbon and alloy.....do....	744	712	123	130	744
Reinforcing.....do....	184	160	28	35	188
Semimanufactures.....do....	322	314	55	120	306
Pipes and tubes.....do....	785	719	182	152	717
Plates.....do....	691	657	110	107	680
Rails.....do....	165	139	11	3	121
Sheets.....do....	1,719	1,548	321	425	1,567
Strip: Cold rolled.....do....	191	162	62	59	127
Hot rolled.....do....	185	185	33	35	155
Structural shapes.....do....	407	386	36	29	428
Tin plate and terneplate.....do....	430	358	104	125	479
Wire and wire products.....do....	492	456	85	108	416
Lead, refined (primary refineries):						
Production.....short tons..	31,756	30,474	38,987	37,489	41,836	42,791
Shipments (domestic).....do....	40,252	31,654	39,563	51,534	45,499	49,850
Stocks, end of month.....do....	24,997	23,640	58,190	44,140	39,767	31,837
Zinc, slab:						
Production.....do....	74,035	70,623	77,463	76,930	78,167	76,019
Shipments, total.....do....	74,191	64,632	47,265	43,353	78,435	78,129
Domestic.....do....	65,696	58,436	36,894	r 38,714	72,963	69,343
Stocks, end of month.....do....	11,244	17,235	63,342	96,919	96,651	94,541
Foundry equipment (new), new orders, net.....1937-39=100..	404.5	346.5	353.8	343.9	311.6	365.9
Machine tools: New orders.....1945-47=100..	488.9	380.2	342.9	374.6	r 309.1	p 300.3
Shipments.....do....	178.9	189.8	330.8	257.2	r 314.8	p 366.8

r/ Revised. p/ Preliminary.

MONTHLY BUSINESS STATISTICS—Continued

Earlier data are available in monthly issues of the Survey and the 1951 Statistical Supplement	1951		1952			
	August	September	June	July	August	September
METALS AND MANUFACTURES - Continued						
Electrical appliances, domestic, sales billed:						
Vacuum cleaners, standard type.....number..	191,299	210,086	206,939	188,715	222,413	237,541
Washers 1/.....do....	242,975	319,475	281,635	209,901	259,280	287,919
Radio sets, production 2/.....do....	563,407	1,100,246	874,253	441,736	543,802	865,654
Television sets (including combination), production 2/.....do....	146,705	337,341	361,152	198,921	397,769	755,665
PETROLEUM AND PRODUCTS						
Crude petroleum:						
Production.....thous. of bbl..	193,201	187,816	185,917	188,868	192,798
Consumption (runs to stills).....do....	202,721	196,752	204,762	214,729	220,661
Stocks, end of month: Gasoline-bearing in U. S.....do....	254,276	254,900	285,964	275,951	264,368
Refined petroleum products:						
Fuel oil:						
Production:						
Distillate fuel oil.....do....	38,335	38,453	43,640	45,735	46,933
Residual fuel oil.....do....	37,993	36,843	36,827	38,337	38,822
Stocks, end of month:						
Distillate fuel oil.....do....	r94,028	96,241	65,911	85,775	104,257
Residual fuel oil.....do....	r48,365	48,212	45,688	52,245	54,061
Lubricating oils:						
Production.....do....	5,379	4,905	4,855	4,668	4,857
Stocks, refinery, end of month.....do....	8,875	8,866	9,694	9,775	9,620
Motor fuel:						
Production, total.....do....	98,799	96,115	98,340	105,022	107,427
Gasoline and naphtha from crude petroleum.....do....	87,875	85,004	86,638	93,373	95,742
Natural gasoline and allied products.....do....	16,977	17,069	17,310	17,669	18,259
Stocks, gasoline, end of month:						
Finished gasoline.....do....	106,704	106,547	112,232	108,708	110,750
Unfinished gasoline.....do....	7,742	7,600	7,934	7,858	7,842
Natural gasoline.....do....	9,883	9,578	10,035	10,095	9,722
PAPER AND PRINTING						
Newsprint, Canada (including Newfoundland):						
Production.....short tons..	484,563	431,082	451,915	485,539	486,496	461,508
Shipments from mills.....do....	480,581	427,738	483,791	483,250	488,575	462,404
Stocks, at mills, end of month.....do....	148,957	152,301	141,805	144,094	142,015	141,119
Newsprint, United States:						
Consumption by publishers.....do....	344,470	381,437	379,943	329,729	341,571	379,669
Production.....do....	101,574	90,725	99,080	94,192	97,831	92,301
Shipments from mills.....do....	100,003	92,487	98,138	94,933	99,008	90,645
Stocks, end of month:						
At mills.....do....	10,191	8,432	9,568	8,827	7,650	9,306
At publishers.....do....	467,052	439,547	476,479	532,297	573,502	582,209
In transit to publishers.....do....	77,646	87,037	74,592	75,474	86,444	77,578
Paperboard:						
Orders, new.....do....	941,500	864,600	850,300	845,800	917,500	1,065,800
Orders, unfilled, end of month.....do....	470,800	458,200	352,900	444,200	388,400	459,900
Production.....do....	997,700	847,100	832,800	773,700	955,600	955,700

r/ Revised. 1/ See note on corresponding item in the October 1952 Survey. 2/ Data for September 1951, June and September 1952 cover 5 weeks; other months, 4 weeks.

UNITED STATES
GOVERNMENT PRINTING OFFICE
DIVISION OF PUBLIC DOCUMENTS
WASHINGTON 25, D. C.

FIRST CLASS

OFFICIAL BUSINESS
Permit No. 1009

PENALTY FOR PRIVATE USE TO AVOID
PAYMENT OF POSTAGE, \$300

WEEKLY SUPPLEMENT
SURVEY OF CURRENT BUSINESS