



# SURVEY OF CURRENT BUSINESS WEEKLY SUPPLEMENT



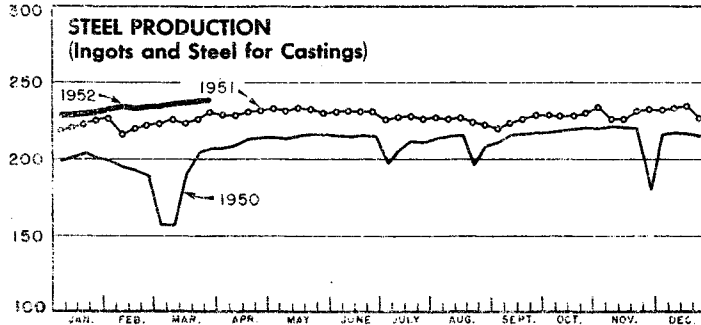
UNITED STATES DEPARTMENT OF COMMERCE  
OFFICE OF BUSINESS ECONOMICS

Available only with subscription to the monthly magazine SURVEY OF CURRENT BUSINESS

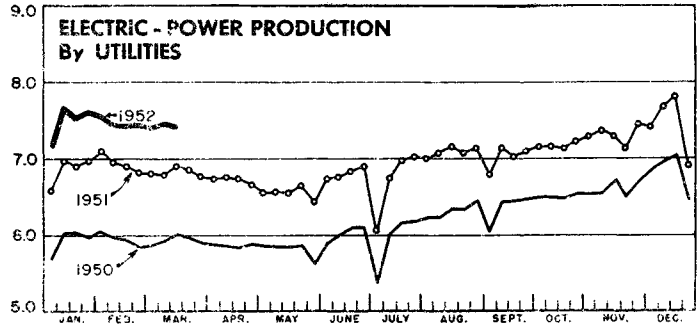
MARCH 28, 1952

## SELECTED BUSINESS INDICATORS

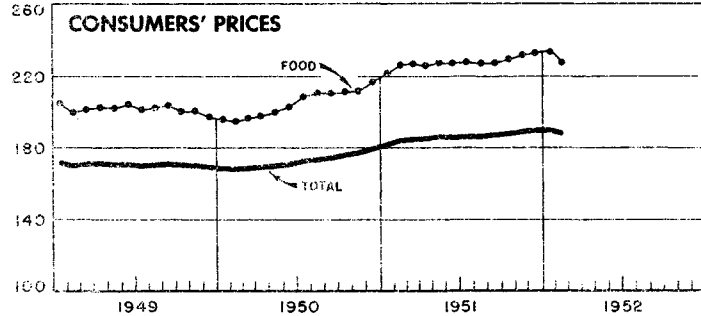
1935-1939=100



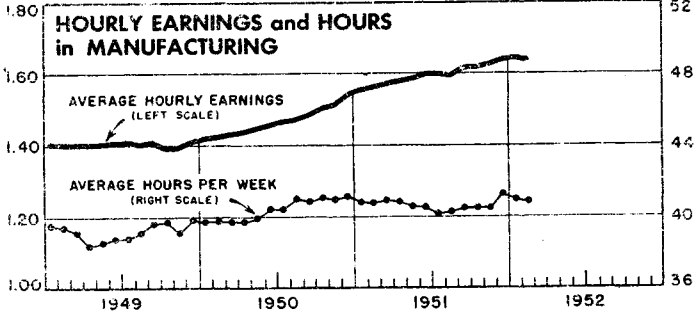
BILLIONS OF KILOWATT-HOURS



1935-39=100



DOLLARS



## WEEKLY BUSINESS STATISTICS <sup>1</sup>

ITEM	1951		1952				
	Mar. 17	Mar. 24	Feb. 23	Mar. 1	Mar. 8	Mar. 15	Mar. 22
<b>Commodity prices, wholesale (revised series):</b>							
All commodities.....1947-49=100..	.....	*116.5	.....	**112.6	111.4	111.6	111.8
Farm products.....do.....	.....	*117.6	.....	**107.8	106.2	107.0	108.1
Food, processed.....do.....	.....	*112.0	.....	**109.7	111.7	109.0	109.3
All other.....do.....	.....	*117.3	.....	**114.3	112.4	113.1	113.2
28 commodities <sup>2/</sup> .....August 1939=100..	379.1	378.3	310.4	307.4	305.4	304.3	304.0
Cotton, middling, 15/16", 10 markets <sup>3/</sup> .....dol. per lb..	.451	.451	.398	.402	.399	.402	.414
Wheat, No. 2, hard winter (Kansas City) <sup>3/</sup> .....dol. per bu..	2.40	2.39	2.50	2.48	2.48	2.50	2.51
Department store sales.....1935-39=100..	292	304	240	245	254	261	.....
Insured unemployment, total.....thous..	938	920	1,325	1,295	.....	.....	.....
State programs.....do.....	701	884	1,280	1,253	.....	.....	.....
<b>Finance:</b>							
Currency in circulation <sup>3/</sup> .....mil. of dol..	27,185	27,133	28,395	28,428	28,493	28,477	28,380
Federal Reserve bank credit, total.....do....	23,652	23,607	23,887	23,750	23,883	23,778	24,216
Member bank reserve balances.....do.....	19,498	19,301	20,007	19,710	19,787	19,781	21,038
Excess reserves, estimated.....do.....	1,042	577	696	458	564	576	1,457
<b>Federal Reserve reporting member banks in leading cities:</b>							
Bank debits, total.....mil. of dol..	28,062	32,163	30,962	24,342	28,270	26,174	.....
New York City.....do.....	12,320	13,155	12,736	9,487	11,044	10,712	13,119
Deposits, demand, adjusted.....do.....	51,826	50,321	52,557	52,683	52,625	53,406	.....
Loans and investments, total.....do.....	69,538	70,447	73,504	73,526	73,423	73,641	.....
U. S. Government obligations.....do.....	30,782	31,198	31,973	31,892	31,718	31,854	.....
Commercial, industrial, and agr. loans (gross).....do....	18,956	19,173	21,148	21,157	21,155	21,237	.....
Failures, industrial and commercial.....number..	185	170	177	163	170	156	181
Bond yields, domestic corporate (Moody's) <sup>3/</sup> .....percent..	2.95	2.98	3.18	3.18	3.19	3.19	3.18
Stock prices, 416 stocks (Standard and Poor's).....1935-39=100..	168.0	171.1	179.6	180.4	184.7	185.2	185.7
Industrials, 365 stocks.....do.....	181.7	185.3	194.8	195.5	200.7	201.4	202.0
<b>Production:</b>							
Bituminous coal <sup>3/</sup> .....thous. of short tons..	1,664	1,698	1,703	1,715	1,653	1,628	.....
Electric power, by utilities.....mil. of kw.-hr..	6,903	6,848	7,461	7,416	7,497	7,414	.....
Motor vehicles (Ward's).....number..	172,383	167,431	104,393	111,360	107,244	112,266	114,950
Petroleum, crude <sup>3/</sup> .....thous. of bbl..	5,959	5,953	6,267	6,267	6,321	6,306	.....
Steel <sup>4/</sup> .....1935-39=100..	224.2	226.4	234.1	234.8	235.7	236.9	238.3
Freight carloadings, total.....thous. of cars..	745	749	683	756	714	709	.....
Miscellaneous.....total.....do.....	390	394	350	390	368	369	.....

<sup>1/</sup> Data do not always cover calendar weeks. <sup>2/</sup> Thursday prices. <sup>3/</sup> Daily averages. <sup>4/</sup> Week ending March 29, 1952. \* Monthly index for March 1951. \*\* Monthly index for February 1952.

## MONTHLY BUSINESS STATISTICS

Earlier data are available in monthly issues of the Survey and the 1951 Statistical Supplement	1951				1952	
	January	February	November	December	January	February
<b>BUSINESS POPULATION</b>						
Industrial and commercial failures:						
Failures, total.....number..	775	599	587	612	671	619
Commercial service.....do....	63	59	48	48	50	52
Construction.....do....	97	60	68	71	68	70
Manufacturing and mining.....do....	132	107	106	131	143	133
Retail trade.....do....	410	304	307	296	348	304
Wholesale trade.....do....	73	69	58	66	62	60
Liabilities, total.....thous. of dol..	21,685	16,009	17,567	19,403	26,208	19,474
Commercial service.....do....	1,482	1,399	952	1,874	4,249	1,649
Construction.....do....	2,393	2,228	3,740	2,251	2,672	1,935
Manufacturing and mining.....do....	5,175	6,134	6,158	6,515	8,365	5,614
Retail trade.....do....	10,376	4,357	4,369	5,177	7,761	6,548
Wholesale trade.....do....	2,259	1,891	2,348	3,586	3,161	3,728
<b>COMMODITY PRICES</b>						
Consumers' price index, all items.....1935-39=100..	181.5	183.8	188.6	189.1	189.1	1/187.9
Apparel.....do....	198.5	202.0	207.6	206.8	204.6	204.3
Food.....do....	221.9	226.0	231.4	232.2	232.4	227.5
Cereals and bakery products.....do....	185.4	187.1	190.2	190.4	190.6	190.9
Dairy products.....do....	202.6	204.4	210.4	213.2	215.8	217.0
Fruits and vegetables.....do....	214.1	224.3	223.5	236.5	241.4	223.5
Meats, poultry, and fish.....do....	263.6	270.1	273.5	270.1	272.1	271.1
Fuels, electricity, and refrigeration.....do....	143.3	143.9	144.8	144.9	145.0	145.3
Gas and electricity.....do....	97.2	97.2	97.4	97.5	97.6	97.9
Other fuels.....do....	202.3	204.5	206.3	206.6	206.8	206.7
Housefurnishings.....do....	207.4	209.7	210.8	210.2	209.1	208.6
Rent.....do....	133.2	134.0	139.2	139.2	139.7	140.2
Miscellaneous.....do....	162.1	163.2	168.4	169.1	169.6	170.2
Wholesale prices (U. S. Department of Labor), indexes:						
All commodities.....1947-49=100..	115.0	116.5	113.6	113.5	r113.0	112.6
Farm products.....do....	112.3	117.2	112.0	111.3	110.0	107.8
Fruits and vegetables, fresh and dried.....do....	90.8	97.8	106.9	117.4	r121.5	112.6
Grains.....do....	99.4	102.2	103.9	105.1	103.6	101.7
Livestock and live poultry.....do....	112.8	120.9	108.5	107.5	106.7	106.2
Foods, processed.....do....	110.2	112.9	111.0	110.7	r110.1	109.7
Cereal and bakery products.....do....	106.4	107.8	107.8	107.9	107.5	107.4
Dairy products and ice cream.....do....	105.8	107.8	111.1	113.0	r113.2	114.9
Fruits and vegetables, canned and frozen.....do....	105.8	106.8	106.1	106.2	r105.7	104.8
Meats, poultry, and fish.....do....	112.2	117.4	115.8	113.6	113.5	110.8
Commodities other than farm products and foods.....do....	116.6	117.2	114.5	114.6	114.3	114.3
Chemicals and allied products.....do....	111.4	112.6	108.6	108.4	106.7	106.0
Chemicals, industrial.....do....	119.9	120.5	120.9	120.8	118.1	117.5
Drugs, pharmaceuticals, cosmetics.....do....	95.9	95.9	95.0	95.2	94.8	93.7
Fats and oils, inedible.....do....	116.2	123.4	65.2	61.5	56.8	51.2
Fertilizer materials.....do....	105.2	105.4	103.1	108.9	r109.4	109.6
Paint and paint materials.....do....	108.1	109.4	109.8	109.9	r109.3	109.0
Fuel, power, and lighting materials.....do....	106.4	107.4	106.9	107.4	107.4	107.2
Coal.....do....	106.5	110.6	108.8	108.9	108.8	108.8
Electricity.....do....	98.5	99.6	98.0	98.0	98.0	98.0
Gas.....do....	104.0	104.7	99.2	r106.6	106.6	106.6
Petroleum and products.....do....	109.9	109.9	110.9	110.8	110.8	110.4
Furniture and other household durables.....do....	114.2	114.6	113.7	112.7	r112.3	112.3
Appliances, household.....do....	107.7	107.9	107.9	108.2	r108.0	108.0
Furniture, household.....do....	117.4	117.6	115.5	115.1	r113.6	113.5
Radios, television, and phonographs.....do....	92.6	92.6	93.0	93.0	93.1	93.1
Hides, skins, and leather products.....do....	127.3	127.7	107.0	105.1	r102.2	99.7
Footwear.....do....	122.3	124.7	118.0	116.5	115.9	116.5
Hides and skins.....do....	140.9	134.8	87.6	81.7	69.7	63.7
Leather.....do....	137.3	137.7	100.3	98.7	r97.0	89.9
Lumber and wood products.....do....	125.5	126.4	121.1	120.3	r120.1	120.4
Lumber.....do....	125.6	126.4	120.8	120.4	120.4	120.6
Machinery and motive products.....do....	117.3	117.7	120.5	120.7	r120.8	121.9
Agricultural machinery and equipment.....do....	118.4	120.2	120.2	120.2	r121.5	121.8
Construction machinery and equipment.....do....	123.1	123.6	123.8	124.0	124.6	124.9
Electrical machinery and equipment.....do....	121.6	121.8	122.1	121.8	r121.5	121.6
Motor vehicles.....do....	109.1	109.5	116.4	116.6	r117.1	120.0
Metals and metal products.....do....	124.0	123.7	122.5	122.5	122.4	122.6
Heating equipment.....do....	114.5	114.7	114.4	114.5	r114.0	114.0
Iron and steel.....do....	124.5	123.5	123.1	123.1	123.1	123.2
Nonferrous metals.....do....	126.0	126.7	124.1	124.2	r124.2	125.1
Nonmetallic minerals, structural.....do....	113.6	113.7	113.6	112.8	r112.9	112.9
Clay products.....do....	121.3	121.4	121.4	121.4	121.4	121.4
Concrete products.....do....	112.1	112.4	112.4	112.4	112.4	112.4
Gypsum products.....do....	117.4	117.4	117.7	117.7	117.7	117.7
Pulp, paper, and allied products.....do....	120.1	r120.5	118.4	118.4	118.2	118.4
Paper.....do....	117.1	117.1	122.4	122.4	122.8	123.7
Rubber and products.....do....	r153.0	r152.5	146.3	145.9	r144.1	143.1
Tires and tubes.....do....	133.9	133.9	133.9	133.4	133.4	133.4
Textile products and apparel.....do....	114.6	115.7	103.9	104.0	r103.3	102.1
Apparel.....do....	104.1	104.4	102.3	102.1	r101.7	101.6
Cotton products.....do....	118.9	119.2	102.3	103.3	r102.8	101.2
Silk products.....do....	138.6	146.3	123.2	125.3	126.0	130.2

r/ Revised. 1/ Index on old basis for February 1952 is 188.3.

MONTHLY BUSINESS STATISTICS—Continued

Earlier data are available in monthly issues of the Survey and the 1951 Statistical Supplement	1951				1952	
	January	February	November	December	January	February
COMMODITY PRICES - Continued						
Wholesale prices (U. S. Department of Labor), indexes - Con.						
Commodities other than farm products and foods - Con.						
Textile products and apparel - Continued						
Synthetic textiles.....1947-49=100..	103.1	103.9	91.5	91.7	91.4	89.9
Wool products.....do.....	153.8	160.1	122.0	120.3	r118.0	114.4
Tobacco manufactures and bottled beverages.....do....	108.4	108.4	107.5	108.1	108.1	111.0
Beverages, alcoholic.....do.....	107.0	107.0	105.9	105.9	105.9	111.5
Cigarettes.....do.....	105.7	105.7	105.0	107.3	107.3	107.3
CONSTRUCTION AND REAL ESTATE						
Highway concrete pavement contract awards: 1/						
Total.....thous. of sq. yd..	5,650	4,836	3,757	2/4,159	3,487	3,723
Airports.....do.....	200	1,222	671	2/413	621	879
Roads.....do.....	3,199	2,400	1,814	2/2,197	1,497	988
Streets and alleys.....do.....	2,252	1,214	1,271	2/1,549	1,369	1,856
DOMESTIC TRADE						
Mail-order and store sales, total, 2 companies.thous.of dol..						
Montgomery Ward & Co.....do.....	296,659	253,570	398,865	477,842	248,926	246,182
Sears, Roebuck and Co.....do.....	88,572	77,573	121,494	146,189	63,912	67,879
	208,088	175,997	277,371	331,653	185,014	178,303
EMPLOYMENT AND WAGES						
Employees in nonagricultural establishments:						
Total, unadjusted.....thousands..	45,246	45,390	r46,852	r47,592	r45,903	p45,834
Manufacturing.....do.....	15,784	15,978	r15,890	r15,912	r15,776	p15,819
Mining.....do.....	932	930	r917	r915	r909	p905
Contract construction.....do.....	2,281	2,228	r2,633	r2,524	r2,316	p2,276
Transportation and public utilities.....do.....	4,072	4,082	r4,165	r4,151	r4,109	p4,105
Trade.....do.....	9,592	9,554	r10,109	r10,646	r9,706	p9,653
Finance.....do.....	1,831	1,839	r1,907	r1,911	r1,906	p1,919
Service.....do.....	4,666	4,657	r4,734	4,702	r4,672	p4,667
Government.....do.....	6,088	6,122	6,497	6,831	6,509	p6,490
Production workers in manufacturing industries, total.do....	13,018	13,186	r12,904	r12,911	r12,775	p12,803
Durable-goods industries.....do.....	7,256	7,371	r7,314	r7,325	r7,269	p7,286
Ordnance and accessories.....do.....	25	27	50	r52	r54	p55
Lumber and wood products (except furniture).....do....	739	736	r719	r695	r657	p651
Furniture and fixtures.....do.....	321	324	294	294	r293	p293
Stone, clay, and glass products.....do.....	473	473	472	465	451	p448
Primary metal industries.....do.....	1,149	1,153	r1,149	r1,164	r1,163	p1,162
Fabricated metal products 3/.....do.....	847	852	r805	r808	r807	p810
Machinery (except electrical).....do.....	1,192	1,215	1,255	1,270	r1,276	p1,281
Electrical machinery.....do.....	711	716	r718	r725	r723	p727
Transportation equipment.....do.....	1,175	1,233	r1,234	r1,239	r1,240	p1,245
Instruments and related products.....do.....	211	215	230	r232	r231	p232
Miscellaneous manufacturing industries.....do.....	413	427	r388	r381	r374	p382
Nondurable-goods industries.....do.....	5,762	5,815	r5,590	r5,586	r5,506	p5,517
Food and kindred products.....do.....	1,120	1,099	r1,160	r1,123	r1,068	p1,064
Tobacco manufactures.....do.....	80	80	85	84	r82	p80
Textile-mill products.....do.....	1,257	1,269	r1,132	1,142	r1,133	p1,120
Apparel and other finished textile products.....do....	1,070	1,115	r1,008	r1,033	r1,026	p1,049
Paper and allied products.....do.....	423	423	r411	409	r404	p403
Printing, publishing, and allied industries.....do....	510	510	r519	519	514	p511
Chemicals and allied products.....do.....	526	532	r542	538	536	p539
Products of petroleum and coal.....do.....	190	191	r197	196	r193	p193
Rubber products.....do.....	222	222	r219	r219	r219	p216
Leather and leather products.....do.....	364	374	r317	323	r331	p342
Hours and earnings:						
Average weekly hours per worker, all manufacturing..hours..	41.0	40.9	40.5	41.2	r40.9	p40.8
Durable-goods industries.....do.....	41.5	41.6	r41.5	42.2	r41.9	p41.8
Nondurable-goods industries.....do.....	40.2	40.0	39.2	39.9	r39.5	p39.5
Average weekly earnings, all manufacturing.....dollars..	63.76	63.84	r65.85	r67.40	r67.08	p66.83
Durable-goods industries.....do.....	67.65	68.18	r71.05	r72.71	r72.28	p72.02
Nondurable-goods industries.....do.....	58.53	58.32	r59.07	r60.49	r60.04	p60.04
Average hourly earnings, all manufacturing.....do.....	1.555	1.561	r1.626	r1.636	r1.640	p1.638
Durable-goods industries.....do.....	1.630	1.639	r1.712	r1.723	1.725	p1.723
Ordnance and accessories.....do.....	1.656	1.661	r1.724	r1.720	r1.737	p1.755
Lumber and wood products (except furniture).....do....	1.376	1.386	r1.499	r1.465	r1.411	p1.432
Furniture and fixtures.....do.....	1.362	1.378	r1.431	r1.439	r1.443	p1.443
Stone, clay, and glass products.....do.....	1.526	1.529	1.590	1.589	r1.588	p1.584
Primary metal industries.....do.....	1.789	1.779	r1.826	r1.843	r1.847	p1.831
Fabricated metal products 3/.....do.....	1.622	1.635	1.689	1.700	r1.703	p1.705
Machinery (except electrical).....do.....	1.716	1.726	1.797	r1.816	r1.820	p1.830
Electrical machinery.....do.....	1.556	1.569	r1.653	r1.659	r1.669	p1.668
Transportation equipment.....do.....	1.806	1.815	r1.893	r1.907	1.914	p1.903
Instruments and related products.....do.....	1.574	1.589	r1.670	r1.681	r1.687	p1.694
Miscellaneous manufacturing industries.....do.....	1.389	1.404	1.446	r1.465	r1.464	p1.459
Nondurable-goods industries.....do.....	1.456	1.458	r1.507	r1.516	r1.520	p1.520
Food and kindred products.....do.....	1.438	1.440	r1.508	r1.516	1.522	p1.528
Tobacco manufactures.....do.....	1.140	1.139	r1.177	r1.180	r1.179	p1.181
Textile-mill products.....do.....	1.320	1.322	r1.335	r1.340	r1.348	p1.344

r/ Revised. p/ Preliminary. 1/ Data for January and November 1951 and January 1952 are for 5 weeks; other months 4 weeks. 2/ Includes some contracts awarded in prior months but not reported. 3/ Except ordnance, machinery, and transportation equipment.

## MONTHLY BUSINESS STATISTICS—Continued

Earlier data are available in monthly issues of the Survey and the 1951 Statistical Supplement	1951				1952	
	January	February	November	December	January	February
<b>EMPLOYMENT AND WAGES - Continued</b>						
Hours and earnings - Continued						
Average hourly earnings - Continued						
Nondurable-goods industries - Continued						
Apparel and other finished textile products...dollars..	1.285	1.290	r1.271	r1.281	r1.292	p1.294
Paper and allied products.....do.....	1.506	1.506	r1.548	1.559	r1.563	p1.564
Printing, publishing, and allied industries.....do.....	1.908	1.933	r1.992	r2.021	r2.002	p2.008
Chemicals and allied products.....do.....	1.595	1.607	r1.644	r1.652	1.655	p1.656
Products of petroleum and coal.....do.....	1.941	1.932	r1.997	2.005	r2.019	p2.005
Rubber products.....do.....	1.653	1.629	r1.715	r1.788	1.819	p1.819
Leather and leather products.....do.....	1.248	1.261	r1.288	1.287	r1.291	p1.297
<b>LEATHER AND PRODUCTS</b>						
Shoes and slippers, production, total.....thous. of pairs..	45,784	43,313	34,884	32,227	41,306	.....
Shoes, sandals, and play shoes, except athletic, total thous. of pairs..	42,164	39,601	29,462	28,794	38,290	.....
Men's.....do.....	10,057	9,371	7,739	7,023	8,577	.....
Youths' and boys'.....do.....	1,251	1,156	1,097	1,068	1,263	.....
Women's.....do.....	21,182	20,154	13,711	13,740	19,676	.....
Misses' and children's.....do.....	6,023	5,586	4,290	4,356	5,623	.....
Infants' and babies'.....do.....	3,651	3,334	2,625	2,607	3,151	.....
Slippers for housewear.....do.....	3,047	3,158	4,930	3,032	2,511	.....
Athletic.....do.....	277	278	180	176	216	.....
Other footwear.....do.....	296	276	312	225	289	.....
<b>METALS AND MANUFACTURES</b>						
Iron ore (Lake Superior district):						
Consumption by furnaces.....thous. of long tons..	7,327	6,435	7,624	7,639	7,527	7,229
Stocks, end of month, total.....do.....	30,227	24,123	49,099	43,711	35,927	29,207
At furnaces.....do.....	25,658	20,324	42,258	37,315	30,369	24,693
On Lake Erie docks.....do.....	4,569	3,799	6,841	6,396	5,558	4,514
Steel products, net shipments, total.....thous. of short tons..	6,905	5,776	6,509	6,411	6,589	.....
Bars, hot rolled: Carbon and alloy.....do.....	767	644	778	748	797	.....
Reinforcing.....do.....	155	141	155	162	168	.....
Semimanufactures.....do.....	320	258	283	313	285	.....
Pipes and tubes.....do.....	744	631	784	777	811	.....
Plates.....do.....	631	522	666	708	707	.....
Rails.....do.....	158	115	136	146	156	.....
Sheets.....do.....	1,977	1,641	1,693	1,590	1,644	.....
Strip: Cold rolled.....do.....	184	167	165	154	180	.....
Hot rolled.....do.....	237	197	184	180	186	.....
Structural shapes.....do.....	409	353	421	409	427	.....
Tin plate and terneplate.....do.....	408	299	327	352	298	.....
Wire and wire products.....do.....	510	442	479	441	477	.....
Boilers, radiators and convectors, cast iron:						
Boilers (round and square):						
Shipments.....thous. of lb..	21,262	19,458	19,335	11,168	11,318	.....
Stocks, end of month.....do.....	31,520	52,712	68,584	69,677	73,039	.....
Radiation:						
Shipments.....thous. of sq. ft..	4,615	4,311	3,512	2,470	2,784	.....
Stocks, end of month.....do.....	3,028	3,099	7,572	7,784	8,382	.....
Oil burners:						
Orders, unfilled, end of month.....number..	65,856	62,963	35,843	38,033	40,256	.....
Shipments.....do.....	63,833	58,550	63,705	39,830	45,748	.....
Stocks, end of month.....do.....	61,006	64,586	71,886	76,102	77,518	.....
<b>PAPER AND PRINTING</b>						
Newsprint, Canada (including Newfoundland):						
Production.....short tons..	453,019	425,097	471,732	435,287	470,456	457,835
Shipments from mills.....do.....	423,343	400,833	491,020	461,455	445,212	441,349
Stocks, at mills, end of month.....do.....	118,818	143,082	128,078	101,910	127,154	143,640
Newsprint, United States:						
Consumption by publishers.....do.....	345,552	336,568	402,829	387,783	345,315	348,630
Production.....do.....	92,959	84,619	95,847	91,763	97,216	94,759
Shipments from mills.....do.....	93,259	85,134	99,301	91,721	95,046	96,982
Stocks, end of month:						
At mills.....do.....	7,941	7,426	7,526	7,568	9,738	7,515
At publishers.....do.....	346,258	331,440	436,244	430,431	460,378	475,502
In transit to publishers.....do.....	93,866	111,019	107,144	91,765	89,491	99,741
<b>TEXTILE PRODUCTS</b>						
Cotton: 1/						
Consumption.....bales..	1,047,275	898,991	730,817	672,715	922,559	768,889
Manufactures, spindle activity (cotton system spindles):						
Active spindles, last working day, total.....thousands..	22,292	22,221	21,758	21,516	21,360	21,126
Consuming 100 percent cotton.....do.....	20,900	20,885	20,519	20,264	20,102	19,854
Spindle hours operated, all fibers, total.....mil. of hr..	13,273	11,069	9,050	8,336	11,399	9,265
Average per working day.....do.....	542	563	464	439	465	471
Consuming 100 percent cotton.....do.....	12,459	10,394	8,486	7,823	10,686	8,696
Operations as percent of capacity.....do.....	146	152	125	118	126	127

r/ Revised. p/ Preliminary. 1/ Data for January 1951 and 1952 cover 5 weeks; other months, 4 weeks.