

Transmission of material in this release is embargoed until  
8:30 a.m. (EDT) Friday, May 4, 2012

USDL-12-0816

Technical information:

Household data: (202) 691-6378 • cpsinfo@bls.gov • www.bls.gov/cps

Establishment data: (202) 691-6555 • cesinfo@bls.gov • www.bls.gov/ces

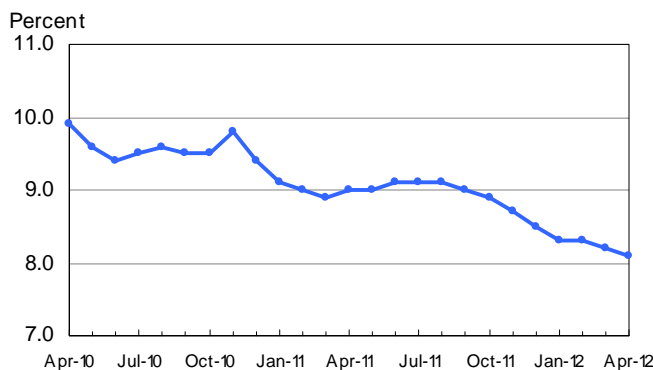
Media contact: (202) 691-5902 • PressOffice@bls.gov

**THE EMPLOYMENT SITUATION — APRIL 2012**

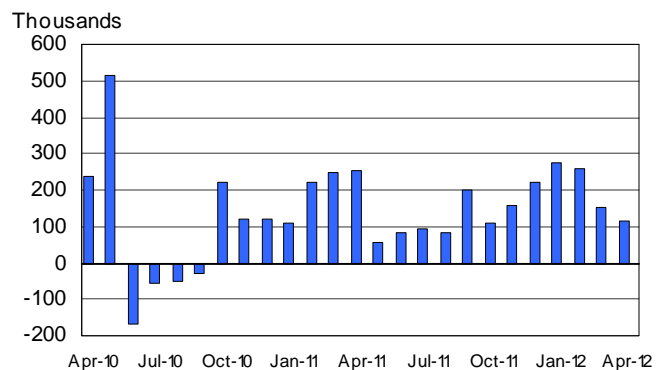
(NOTE: Data published in this release for women employees in the Government and Total nonfarm industries are erroneous. Errors are found in Summary table B and table B-5. Additional information is available at [www.bls.gov/bls/ceswomen\\_usps.htm](http://www.bls.gov/bls/ceswomen_usps.htm).)

Nonfarm payroll employment rose by 115,000 in April, and the **unemployment rate** was little changed at 8.1 percent, the U.S. Bureau of Labor Statistics reported today. Employment increased in professional and business services, retail trade, and health care, but declined in transportation and warehousing.

**Chart 1. Unemployment rate, seasonally adjusted, April 2010 – April 2012**



**Chart 2. Nonfarm payroll employment over-the-month change, seasonally adjusted, April 2010 – April 2012**



**Household Survey Data**

Both the **number of unemployed persons** (12.5 million) and the **unemployment rate** (8.1 percent) changed little in April. (See table A-1.)

Among the **major worker groups**, the unemployment rates for adult men (7.5 percent), adult women (7.4 percent), teenagers (24.9 percent), whites (7.4 percent), and Hispanics (10.3 percent) showed little or no change in April, while the rate for blacks (13.0 percent) declined over the month. The jobless rate

for Asians was 5.2 percent in April (not seasonally adjusted), little changed from a year earlier. (See tables A-1, A-2, and A-3.)

The number of **long-term unemployed** (those jobless for 27 weeks and over) was little changed at 5.1 million in April. These individuals made up 41.3 percent of the unemployed. Over the year, the number of long-term unemployed has fallen by 759,000. (See table A-12.)

The **civilian labor force participation rate** declined in April to 63.6 percent, while the **employment-population ratio**, at 58.4 percent, changed little. (See table A-1.)

The number of persons employed **part time for economic reasons** (sometimes referred to as involuntary part-time workers) was essentially unchanged in April at 7.9 million. These individuals were working part time because their hours had been cut back or because they were unable to find a full-time job. (See table A-8.)

In April, 2.4 million persons were **marginally attached to the labor force**, essentially unchanged from a year earlier. (The data are not seasonally adjusted.) These individuals were not in the labor force, wanted and were available for work, and had looked for a job sometime in the prior 12 months. They were not counted as unemployed because they had not searched for work in the 4 weeks preceding the survey. (See table A-16.)

Among the marginally attached, there were 968,000 **discouraged workers** in April, about the same as a year earlier. (The data are not seasonally adjusted.) Discouraged workers are persons not currently looking for work because they believe no jobs are available for them. The remaining 1.4 million persons marginally attached to the labor force in April had not searched for work in the 4 weeks preceding the survey for reasons such as school attendance or family responsibilities. (See table A-16.)

### **Establishment Survey Data**

Total **nonfarm payroll employment** rose by 115,000 in April. This increase followed a gain of 154,000 in March and gains averaging 252,000 per month for December to February. In April, employment rose in professional and business services, retail trade, and health care. Transportation and warehousing lost jobs over the month. (See table B-1.)

Employment in **professional and business services** increased by 62,000 in April. Since a recent low point in September 2009, employment in this industry has grown by 1.5 million. In April, employment in temporary help services edged up by 21,000. Employment grew in architectural and engineering services (+7,000) and in computer systems design and related services (+7,000).

**Retail trade** employment rose by 29,000 over the month. General merchandise stores added 21,000 jobs in April but has shown no definitive trend in recent months. Employment in building material and garden supply stores continued to trend up; the industry has added 19,000 jobs since December.

**Health care** continued to add jobs (+19,000) in April. Within the industry, employment in ambulatory health care services, which includes home health care and offices of physicians, rose by 15,000.

Within leisure and hospitality, employment in **food services and drinking places** continued to trend up (+20,000) in April. Since February 2010, food services and drinking places has added 576,000 jobs.

**Manufacturing** employment continued to trend up (+16,000) in April, with job growth in fabricated metal products (+6,000) and machinery (+5,000). Since its most recent employment low in January 2010, manufacturing has added 489,000 jobs, largely in durable goods manufacturing.

**Transportation and warehousing** lost 17,000 jobs in April, with employment declines in transit and ground passenger transportation (-11,000) and in couriers and messengers (-7,000).

Employment in other major industries, including **mining and logging, construction, wholesale trade, information, financial activities, and government** changed little in April.

The **average workweek for all employees** on private nonfarm payrolls was unchanged at 34.5 hours in April. The manufacturing workweek edged up by 0.1 hour to 40.8 hours, and factory overtime rose by 0.1 hour to 3.4 hours. The average workweek for **production and nonsupervisory employees** on private nonfarm payrolls was unchanged at 33.8 hours. (See tables B-2 and B-7.)

In April, **average hourly earnings for all employees** on private nonfarm payrolls rose by 1 cent to \$23.38. Over the past 12 months, average hourly earnings have increased by 1.8 percent. In April, average hourly earnings of private-sector **production and nonsupervisory employees** rose by 3 cents to \$19.72. (See tables B-3 and B-8.)

The change in total nonfarm payroll employment for February was revised from +240,000 to +259,000, and the change for March was revised from +120,000 to +154,000.

---

**The Employment Situation for May is scheduled to be released on Friday, June 1, 2012, at 8:30 a.m. (EDT).**

# HOUSEHOLD DATA

## Summary table A. Household data, seasonally adjusted

[Numbers in thousands]

Category	Apr. 2011	Feb. 2012	Mar. 2012	Apr. 2012	Change from: Mar. 2012-Apr. 2012
<b>Employment status</b>					
Civilian noninstitutional population.....	239,146	242,435	242,604	242,784	180
Civilian labor force.....	153,420	154,871	154,707	154,365	-342
Participation rate.....	64.2	63.9	63.8	63.6	-0.2
Employed.....	139,628	142,065	142,034	141,865	-169
Employment-population ratio.....	58.4	58.6	58.5	58.4	-0.1
Unemployed.....	13,792	12,806	12,673	12,500	-173
Unemployment rate.....	9.0	8.3	8.2	8.1	-0.1
Not in labor force.....	85,726	87,564	87,897	88,419	522
<b>Unemployment rates</b>					
Total, 16 years and over.....	9.0	8.3	8.2	8.1	-0.1
Adult men (20 years and over).....	8.8	7.7	7.6	7.5	-0.1
Adult women (20 years and over).....	7.9	7.7	7.4	7.4	0.0
Teenagers (16 to 19 years).....	24.9	23.8	25.0	24.9	-0.1
White.....	8.1	7.3	7.3	7.4	0.1
Black or African American.....	16.2	14.1	14.0	13.0	-1.0
Asian (not seasonally adjusted).....	6.4	6.3	6.2	5.2	-
Hispanic or Latino ethnicity.....	11.8	10.7	10.3	10.3	0.0
Total, 25 years and over.....	7.6	7.0	6.8	6.8	0.0
Less than a high school diploma.....	14.6	12.9	12.6	12.5	-0.1
High school graduates, no college.....	9.7	8.3	8.0	7.9	-0.1
Some college or associate degree.....	7.5	7.3	7.5	7.6	0.1
Bachelor's degree and higher.....	4.5	4.2	4.2	4.0	-0.2
<b>Reason for unemployment</b>					
Job losers and persons who completed temporary jobs.....	8,181	7,209	7,020	6,852	-168
Job leavers.....	944	1,031	1,117	997	-120
Reentrants.....	3,387	3,361	3,269	3,341	72
New entrants.....	1,322	1,392	1,433	1,384	-49
<b>Duration of unemployment</b>					
Less than 5 weeks.....	2,725	2,541	2,572	2,543	-29
5 to 14 weeks.....	2,931	2,807	2,754	2,814	60
15 to 26 weeks.....	2,058	1,971	1,867	1,884	17
27 weeks and over.....	5,860	5,426	5,308	5,101	-207
<b>Employed persons at work part time</b>					
Part time for economic reasons.....	8,571	8,119	7,672	7,853	181
Slack work or business conditions.....	5,714	5,446	5,081	5,187	106
Could only find part-time work.....	2,444	2,404	2,341	2,367	26
Part time for noneconomic reasons.....	18,326	18,827	18,523	18,832	309
<b>Persons not in the labor force (not seasonally adjusted)</b>					
Marginally attached to the labor force.....	2,466	2,608	2,352	2,363	-
Discouraged workers.....	989	1,006	865	968	-

- Over-the-month changes are not displayed for not seasonally adjusted data.

NOTE: Persons whose ethnicity is identified as Hispanic or Latino may be of any race. Detail for the seasonally adjusted data shown in this table will not necessarily add to totals because of the independent seasonal adjustment of the various series. Updated population controls are introduced annually with the release of January data.

**ESTABLISHMENT DATA**  
**Summary table B. Establishment data, seasonally adjusted**

Category	Apr. 2011	Feb. 2012	Mar. 2012 <sup>p</sup>	Apr. 2012 <sup>p</sup>
<b>EMPLOYMENT BY SELECTED INDUSTRY</b> (Over-the-month change, in thousands)				
Total nonfarm.....	251	259	154	115
Total private.....	264	254	166	130
Goods-producing.....	39	36	38	14
Mining and logging.....	12	7	0	0
Construction.....	-1	-1	-3	-2
Manufacturing.....	28	30	41	16
Durable goods <sup>1</sup> .....	19	27	28	15
Motor vehicles and parts.....	2.8	4.8	11.5	1.3
Nondurable goods.....	9	3	13	1
Private service-providing <sup>1</sup> .....	225	218	128	116
Wholesale trade.....	7.2	7.0	2.9	7.4
Retail trade.....	67.5	-15.2	-20.9	29.3
Transportation and warehousing.....	10.0	14.3	1.8	-16.6
Information.....	-1	8	-6	-2
Financial activities.....	-4	7	14	1
Professional and business services <sup>1</sup> .....	50	89	37	62
Temporary help services.....	-1.3	49.6	-9.4	21.1
Education and health services <sup>1</sup> .....	55	71	45	23
Health care and social assistance.....	37.6	48.9	26.8	18.4
Leisure and hospitality.....	36	45	52	12
Other services.....	3	-9	2	-2
Government.....	-13	5	-12	-15
<b>WOMEN AND PRODUCTION AND NONSUPERVISORY EMPLOYEES</b> AS A PERCENT OF ALL EMPLOYEES <sup>2</sup>				
Total nonfarm women employees.....	49.5	49.3	49.3	49.3
Total private women employees.....	48.0	47.8	47.8	47.8
Total private production and nonsupervisory employees.....	82.4	82.6	82.6	82.6
<b>HOURS AND EARNINGS</b> ALL EMPLOYEES				
<b>Total private</b>				
Average weekly hours.....	34.4	34.6	34.5	34.5
Average hourly earnings.....	\$ 22.97	\$ 23.33	\$ 23.37	\$ 23.38
Average weekly earnings.....	\$790.17	\$807.22	\$806.27	\$806.61
Index of aggregate weekly hours (2007=100) <sup>3</sup> .....	94.0	96.0	95.9	96.0
Over-the-month percent change.....	0.5	0.5	-0.1	0.1
Index of aggregate weekly payrolls (2007=100) <sup>4</sup> .....	102.9	106.8	106.8	107.0
Over-the-month percent change.....	0.8	0.8	0.0	0.2
<b>HOURS AND EARNINGS</b> PRODUCTION AND NONSUPERVISORY EMPLOYEES				
<b>Total private</b>				
Average weekly hours.....	33.7	33.8	33.8	33.8
Average hourly earnings.....	\$ 19.39	\$ 19.65	\$ 19.69	\$ 19.72
Average weekly earnings.....	\$653.44	\$664.17	\$665.52	\$666.54
Index of aggregate weekly hours (2002=100) <sup>3</sup> .....	101.2	103.3	103.5	103.6
Over-the-month percent change.....	0.6	0.3	0.2	0.1
Index of aggregate weekly payrolls (2002=100) <sup>4</sup> .....	131.1	135.7	136.1	136.5
Over-the-month percent change.....	0.8	0.5	0.3	0.3
<b>DIFFUSION INDEX</b> (Over 1-month span) <sup>5</sup>				
Total private (266 industries).....	65.2	62.2	64.7	56.8
Manufacturing (81 industries).....	66.7	63.0	69.8	59.9

1 Includes other industries, not shown separately.

2 Data relate to production employees in mining and logging and manufacturing, construction employees in construction, and nonsupervisory employees in the service-providing industries.

3 The indexes of aggregate weekly hours are calculated by dividing the current month's estimates of aggregate hours by the corresponding annual average aggregate hours.

4 The indexes of aggregate weekly payrolls are calculated by dividing the current month's estimates of aggregate weekly payrolls by the corresponding annual average aggregate weekly payrolls.

5 Figures are the percent of industries with employment increasing plus one-half of the industries with unchanged employment, where 50 percent indicates an equal balance between industries with increasing and decreasing employment.

p Preliminary

NOTE: Data published in this release for women employees in the Government and Total nonfarm industries are erroneous. Additional information is available at

[www.bls.gov/bls/ceswomen\\_usps.htm](http://www.bls.gov/bls/ceswomen_usps.htm).

## **Frequently Asked Questions about Employment and Unemployment Estimates**

### **Why are there two monthly measures of employment?**

The household survey and establishment survey both produce sample-based estimates of employment and both have strengths and limitations. The establishment survey employment series has a smaller margin of error on the measurement of month-to-month change than the household survey because of its much larger sample size. An over-the-month employment change of about 100,000 is statistically significant in the establishment survey, while the threshold for a statistically significant change in the household survey is about 400,000. However, the household survey has a more expansive scope than the establishment survey because it includes the self-employed, unpaid family workers, agricultural workers, and private household workers, who are excluded by the establishment survey. The household survey also provides estimates of employment for demographic groups.

### **Are undocumented immigrants counted in the surveys?**

It is likely that both surveys include at least some undocumented immigrants. However, neither the establishment nor the household survey is designed to identify the legal status of workers. Therefore, it is not possible to determine how many are counted in either survey. The establishment survey does not collect data on the legal status of workers. The household survey does include questions which identify the foreign and native born, but it does not include questions about the legal status of the foreign born.

### **Why does the establishment survey have revisions?**

The establishment survey revises published estimates to improve its data series by incorporating additional information that was not available at the time of the initial publication of the estimates. The establishment survey revises its initial monthly estimates twice, in the immediately succeeding 2 months, to incorporate additional sample receipts from respondents in the survey and recalculated seasonal adjustment factors. For more information on the monthly revisions, please visit [www.bls.gov/ces/cesrevinfo.htm](http://www.bls.gov/ces/cesrevinfo.htm).

On an annual basis, the establishment survey incorporates a benchmark revision that re-anchors estimates to nearly complete employment counts available from unemployment insurance tax records. The benchmark helps to control for sampling and modeling errors in the estimates. For more information on the annual benchmark revision, please visit [www.bls.gov/web/cesbmart.htm](http://www.bls.gov/web/cesbmart.htm).

### **Does the establishment survey sample include small firms?**

Yes; about 40 percent of the establishment survey sample is comprised of business establishments with fewer than 20 employees. The establishment survey sample is designed to maximize the reliability of the total nonfarm employment estimate; firms from all size classes and industries are appropriately sampled to achieve that goal.

### **Does the establishment survey account for employment from new businesses?**

Yes; monthly establishment survey estimates include an adjustment to account for the net employment change generated by business births and deaths. The adjustment comes from an econometric model that forecasts the monthly net jobs impact of business births and deaths based on the actual past values of the net impact that can be observed with a lag from the Quarterly Census of Employment and Wages. The

establishment survey uses modeling rather than sampling for this purpose because the survey is not immediately able to bring new businesses into the sample. There is an unavoidable lag between the birth of a new firm and its appearance on the sampling frame and availability for selection. BLS adds new businesses to the survey twice a year.

**Is the count of unemployed persons limited to just those people receiving unemployment insurance benefits?**

No; the estimate of unemployment is based on a monthly sample survey of households. All persons who are without jobs and are actively seeking and available to work are included among the unemployed. (People on temporary layoff are included even if they do not actively seek work.) There is no requirement or question relating to unemployment insurance benefits in the monthly survey.

**Does the official unemployment rate exclude people who have stopped looking for work?**

Yes; however, there are separate estimates of persons outside the labor force who want a job, including those who have stopped looking because they believe no jobs are available (discouraged workers). In addition, alternative measures of labor underutilization (some of which include discouraged workers and other groups not officially counted as unemployed) are published each month in The Employment Situation news release.

**How can unusually severe weather affect employment and hours estimates?**

In the establishment survey, the reference period is the pay period that includes the 12<sup>th</sup> of the month. Unusually severe weather is more likely to have an impact on average weekly hours than on employment. Average weekly hours are estimated for paid time during the pay period, including pay for holidays, sick leave, or other time off. The impact of severe weather on hours estimates typically, but not always, results in a reduction in average weekly hours. For example, some employees may be off work for part of the pay period and not receive pay for the time missed, while some workers, such as those dealing with cleanup or repair, may work extra hours.

In order for severe weather conditions to reduce the estimate of payroll employment, employees have to be off work without pay for the entire pay period. About half of all employees in the payroll survey have a 2-week, semi-monthly, or monthly pay period. Employees who receive pay for any part of the pay period, even 1 hour, are counted in the payroll employment figures. It is not possible to quantify the effect of extreme weather on estimates of employment from the establishment survey.

In the household survey, the reference period is generally the calendar week that includes the 12<sup>th</sup> of the month. Persons who miss the entire week's work for weather-related events are counted as employed whether or not they are paid for the time off. The household survey collects data on the number of persons who usually work full time but had reduced hours, or had a job but were not at work the entire week, due to bad weather. Current and historical data are available on the household survey's most requested statistics page at <http://data.bls.gov/cgi-bin/surveymost?ln>.

# Technical Note

This news release presents statistics from two major surveys, the Current Population Survey (CPS; household survey) and the Current Employment Statistics survey (CES; establishment survey). The household survey provides information on the labor force, employment, and unemployment that appears in the "A" tables, marked HOUSEHOLD DATA. It is a sample survey of about 60,000 eligible households conducted by the U.S. Census Bureau for the U.S. Bureau of Labor Statistics (BLS).

The establishment survey provides information on employment, hours, and earnings of employees on nonfarm payrolls; the data appear in the "B" tables, marked ESTABLISHMENT DATA. BLS collects these data each month from the payroll records of a sample of nonagricultural business establishments. Each month the CES program surveys about 141,000 businesses and government agencies, representing approximately 486,000 individual worksites, in order to provide detailed industry data on employment, hours, and earnings of workers on nonfarm payrolls. The active sample includes approximately one-third of all nonfarm payroll employees.

For both surveys, the data for a given month relate to a particular week or pay period. In the household survey, the reference period is generally the calendar week that contains the 12th day of the month. In the establishment survey, the reference period is the pay period including the 12th, which may or may not correspond directly to the calendar week.

## Coverage, definitions, and differences between surveys

**Household survey.** The sample is selected to reflect the entire civilian noninstitutional population. Based on responses to a series of questions on work and job search activities, each person 16 years and over in a sample household is classified as employed, unemployed, or not in the labor force.

People are classified as *employed* if they did any work at all as paid employees during the reference week; worked in their own business, profession, or on their own farm; or worked without pay at least 15 hours in a family business or farm. People are also counted as employed if they were temporarily absent from their jobs because of illness, bad weather, vacation, labor-management disputes, or personal reasons.

People are classified as *unemployed* if they meet all of the following criteria: they had no employment during the reference week; they were available for work at that time; and they made specific efforts to find employment sometime during the 4-week period ending with the reference week. Persons laid off from a job and expecting recall need not be looking for work to be counted as unemployed. The unemployment data derived from the household survey in no way depend upon the eligibility for or receipt of unemployment insurance benefits.

The *civilian labor force* is the sum of employed and

unemployed persons. Those not classified as employed or unemployed are *not in the labor force*. The *unemployment rate* is the number unemployed as a percent of the labor force. The *labor force participation rate* is the labor force as a percent of the population, and the *employment-population ratio* is the employed as a percent of the population. Additional information about the household survey can be found at [www.bls.gov/cps/documentation.htm](http://www.bls.gov/cps/documentation.htm).

**Establishment survey.** The sample establishments are drawn from private nonfarm businesses such as factories, offices, and stores, as well as from federal, state, and local government entities. *Employees on nonfarm payrolls* are those who received pay for any part of the reference pay period, including persons on paid leave. Persons are counted in each job they hold. *Hours and earnings* data are produced for the private sector for all employees and for production and nonsupervisory employees. *Production and nonsupervisory employees* are defined as production and related employees in manufacturing and mining and logging, construction workers in construction, and non-supervisory employees in private service-providing industries.

Industries are classified on the basis of an establishment's principal activity in accordance with the 2012 version of the North American Industry Classification System. Additional information about the establishment survey can be found at [www.bls.gov/ces/#technical](http://www.bls.gov/ces/#technical).

**Differences in employment estimates.** The numerous conceptual and methodological differences between the household and establishment surveys result in important distinctions in the employment estimates derived from the surveys. Among these are:

- The household survey includes agricultural workers, the self-employed, unpaid family workers, and private household workers among the employed. These groups are excluded from the establishment survey.
- The household survey includes people on unpaid leave among the employed. The establishment survey does not.
- The household survey is limited to workers 16 years of age and older. The establishment survey is not limited by age.
- The household survey has no duplication of individuals, because individuals are counted only once, even if they hold more than one job. In the establishment survey, employees working at more than one job and thus appearing on more than one payroll are counted separately for each appearance.



## Seasonal adjustment

Over the course of a year, the size of the nation's labor force and the levels of employment and unemployment undergo regularly occurring fluctuations. These events may result from seasonal changes in weather, major holidays, and the opening and closing of schools. The effect of such seasonal variation can be very large.

Because these seasonal events follow a more or less regular pattern each year, their influence on the level of a series can be tempered by adjusting for regular seasonal variation. These adjustments make nonseasonal developments, such as declines in employment or increases in the participation of women in the labor force, easier to spot. For example, in the household survey, the large number of youth entering the labor force each June is likely to obscure any other changes that have taken place relative to May, making it difficult to determine if the level of economic activity has risen or declined. Similarly, in the establishment survey, payroll employment in education declines by about 20 percent at the end of the spring term and later rises with the start of the fall term, obscuring the underlying employment trends in the industry. Because seasonal employment changes at the end and beginning of the school year can be estimated, the statistics can be adjusted to make underlying employment patterns more discernable. The seasonally adjusted figures provide a more useful tool with which to analyze changes in month-to-month economic activity.

Many seasonally adjusted series are independently adjusted in both the household and establishment surveys. However, the adjusted series for many major estimates, such as total payroll employment, employment in most major sectors, total employment, and unemployment are computed by aggregating independently adjusted component series. For example, total unemployment is derived by summing the adjusted series for four major age-sex components; this differs from the unemployment estimate that would be obtained by directly adjusting the total or by combining the duration, reasons, or more detailed age categories.

For both the household and establishment surveys, a concurrent seasonal adjustment methodology is used in which new seasonal factors are calculated each month using all relevant data, up to and including the data for the current month. In the household survey, new seasonal factors are used to adjust only the current month's data. In the establishment survey, however, new seasonal factors are used each month to adjust the three most recent monthly estimates. The prior 2 months are routinely revised to incorporate additional sample reports and recalculated seasonal adjustment factors. In both surveys, 5-year revisions to historical data are made once a year.

## Reliability of the estimates

Statistics based on the household and establishment surveys are subject to both sampling and nonsampling error. When a sample rather than the entire population is

surveyed, there is a chance that the sample estimates may differ from the "true" population values they represent. The exact difference, or *sampling error*, varies depending on the particular sample selected, and this variability is measured by the standard error of the estimate. There is about a 90-percent chance, or level of confidence, that an estimate based on a sample will differ by no more than 1.6 standard errors from the "true" population value because of sampling error. BLS analyses are generally conducted at the 90-percent level of confidence.

For example, the confidence interval for the monthly change in total nonfarm employment from the establishment survey is on the order of plus or minus 100,000. Suppose the estimate of nonfarm employment increases by 50,000 from one month to the next. The 90-percent confidence interval on the monthly change would range from -50,000 to +150,000 (50,000 +/- 100,000). These figures do not mean that the sample results are off by these magnitudes, but rather that there is about a 90-percent chance that the "true" over-the-month change lies within this interval. Since this range includes values of less than zero, we could not say with confidence that nonfarm employment had, in fact, increased that month. If, however, the reported nonfarm employment rise was 250,000, then all of the values within the 90-percent confidence interval would be greater than zero. In this case, it is likely (at least a 90-percent chance) that nonfarm employment had, in fact, risen that month. At an unemployment rate of around 5.5 percent, the 90-percent confidence interval for the monthly change in unemployment as measured by the household survey is about +/- 280,000, and for the monthly change in the unemployment rate it is about +/- 0.19 percentage point.

In general, estimates involving many individuals or establishments have lower standard errors (relative to the size of the estimate) than estimates which are based on a small number of observations. The precision of estimates also is improved when the data are cumulated over time, such as for quarterly and annual averages.

The household and establishment surveys are also affected by *nonsampling error*, which can occur for many reasons, including the failure to sample a segment of the population, inability to obtain information for all respondents in the sample, inability or unwillingness of respondents to provide correct information on a timely basis, mistakes made by respondents, and errors made in the collection or processing of the data.

For example, in the establishment survey, estimates for the most recent 2 months are based on incomplete returns; for this reason, these estimates are labeled preliminary in the tables. It is only after two successive revisions to a monthly estimate, when nearly all sample reports have been received, that the estimate is considered final.

Another major source of nonsampling error in the establishment survey is the inability to capture, on a timely basis, employment generated by new firms. To correct for this systematic underestimation of employment growth, an estimation procedure with two components is used to account for business births. The first component excludes

employment losses from business deaths from sample-based estimation in order to offset the missing employment gains from business births. This is incorporated into the sample-based estimation procedure by simply not reflecting sample units going out of business, but imputing to them the same employment trend as the other firms in the sample. This procedure accounts for most of the net birth/death employment.

The second component is an ARIMA time series model designed to estimate the residual net birth/death employment not accounted for by the imputation. The historical time series used to create and test the ARIMA model was derived from the unemployment insurance universe micro-level database, and reflects the actual residual net of births and deaths over the past 5 years.

The sample-based estimates from the establishment survey are adjusted once a year (on a lagged basis) to

universe counts of payroll employment obtained from administrative records of the unemployment insurance program. The difference between the March sample-based employment estimates and the March universe counts is known as a benchmark revision, and serves as a rough proxy for total survey error. The new benchmarks also incorporate changes in the classification of industries. Over the past decade, absolute benchmark revisions for total nonfarm employment have averaged 0.3 percent, with a range from -0.7 to 0.6 percent.

#### **Other information**

Information in this release will be made available to sensory impaired individuals upon request. Voice phone: (202) 691-5200; Federal Relay Service: (800) 877-8339.

# HOUSEHOLD DATA

## Table A-1. Employment status of the civilian population by sex and age

[Numbers in thousands]

Employment status, sex, and age	Not seasonally adjusted			Seasonally adjusted <sup>1</sup>					
	Apr. 2011	Mar. 2012	Apr. 2012	Apr. 2011	Dec. 2011	Jan. 2012	Feb. 2012	Mar. 2012	Apr. 2012
<b>TOTAL</b>									
Civilian noninstitutional population.....	239,146	242,604	242,784	239,146	240,584	242,269	242,435	242,604	242,784
Civilian labor force.....	152,898	154,316	153,905	153,420	153,887	154,395	154,871	154,707	154,365
Participation rate.....	63.9	63.6	63.4	64.2	64.0	63.7	63.9	63.8	63.6
Employed.....	139,661	141,412	141,995	139,628	140,790	141,637	142,065	142,034	141,865
Employment-population ratio.....	58.4	58.3	58.5	58.4	58.5	58.5	58.6	58.5	58.4
Unemployed.....	13,237	12,904	11,910	13,792	13,097	12,758	12,806	12,673	12,500
Unemployment rate.....	8.7	8.4	7.7	9.0	8.5	8.3	8.3	8.2	8.1
Not in labor force.....	86,248	88,288	88,879	85,726	86,697	87,874	87,564	87,897	88,419
Persons who currently want a job.....	6,482	6,041	6,328	6,518	6,385	6,319	6,378	6,299	6,366
<b>Men, 16 years and over</b>									
Civilian noninstitutional population.....	116,067	116,986	117,081	116,067	116,832	116,808	116,896	116,986	117,081
Civilian labor force.....	81,354	81,830	81,629	81,716	82,373	82,070	82,165	82,179	81,983
Participation rate.....	70.1	69.9	69.7	70.4	70.5	70.3	70.3	70.2	70.0
Employed.....	73,761	74,507	75,074	73,969	75,235	75,288	75,318	75,369	75,256
Employment-population ratio.....	63.6	63.7	64.1	63.7	64.4	64.5	64.4	64.4	64.3
Unemployed.....	7,593	7,323	6,555	7,747	7,138	6,781	6,846	6,810	6,727
Unemployment rate.....	9.3	8.9	8.0	9.5	8.7	8.3	8.3	8.3	8.2
Not in labor force.....	34,713	35,156	35,452	34,350	34,459	34,739	34,732	34,807	35,098
<b>Men, 20 years and over</b>									
Civilian noninstitutional population.....	107,469	108,289	108,396	107,469	108,290	108,087	108,188	108,289	108,396
Civilian labor force.....	78,702	79,175	78,839	78,895	79,436	79,234	79,317	79,337	79,050
Participation rate.....	73.2	73.1	72.7	73.4	73.4	73.3	73.3	73.3	72.9
Employed.....	71,822	72,567	73,010	71,942	73,080	73,170	73,240	73,286	73,119
Employment-population ratio.....	66.8	67.0	67.4	66.9	67.5	67.7	67.7	67.7	67.5
Unemployed.....	6,880	6,608	5,829	6,953	6,356	6,064	6,077	6,051	5,930
Unemployment rate.....	8.7	8.3	7.4	8.8	8.0	7.7	7.7	7.6	7.5
Not in labor force.....	28,767	29,114	29,557	28,573	28,854	28,853	28,870	28,952	29,346
<b>Women, 16 years and over</b>									
Civilian noninstitutional population.....	123,079	125,619	125,703	123,079	123,753	125,461	125,539	125,619	125,703
Civilian labor force.....	71,544	72,486	72,276	71,704	71,514	72,326	72,706	72,529	72,382
Participation rate.....	58.1	57.7	57.5	58.3	57.8	57.6	57.9	57.7	57.6
Employed.....	65,900	66,906	66,921	65,659	65,555	66,349	66,747	66,665	66,609
Employment-population ratio.....	53.5	53.3	53.2	53.3	53.0	52.9	53.2	53.1	53.0
Unemployed.....	5,644	5,580	5,355	6,045	5,959	5,977	5,960	5,863	5,773
Unemployment rate.....	7.9	7.7	7.4	8.4	8.3	8.3	8.2	8.1	8.0
Not in labor force.....	51,535	53,133	53,427	51,376	52,238	53,135	52,833	53,090	53,321
<b>Women, 20 years and over</b>									
Civilian noninstitutional population.....	114,868	117,260	117,353	114,868	115,602	117,082	117,170	117,260	117,353
Civilian labor force.....	68,863	69,755	69,643	68,860	68,748	69,449	69,815	69,589	69,562
Participation rate.....	59.9	59.5	59.3	59.9	59.5	59.3	59.6	59.3	59.3
Employed.....	63,733	64,756	64,822	63,431	63,323	64,078	64,454	64,413	64,425
Employment-population ratio.....	55.5	55.2	55.2	55.2	54.8	54.7	55.0	54.9	54.9
Unemployed.....	5,130	4,998	4,820	5,430	5,425	5,370	5,361	5,176	5,137
Unemployment rate.....	7.4	7.2	6.9	7.9	7.9	7.7	7.7	7.4	7.4
Not in labor force.....	46,005	47,505	47,711	46,008	46,854	47,634	47,355	47,671	47,791
<b>Both sexes, 16 to 19 years</b>									
Civilian noninstitutional population.....	16,809	17,056	17,034	16,809	16,693	17,100	17,078	17,056	17,034
Civilian labor force.....	5,333	5,386	5,423	5,665	5,704	5,713	5,739	5,781	5,753
Participation rate.....	31.7	31.6	31.8	33.7	34.2	33.4	33.6	33.9	33.8
Employed.....	4,106	4,089	4,163	4,255	4,387	4,389	4,371	4,335	4,321
Employment-population ratio.....	24.4	24.0	24.4	25.3	26.3	25.7	25.6	25.4	25.4
Unemployed.....	1,227	1,297	1,260	1,410	1,316	1,324	1,367	1,447	1,432
Unemployment rate.....	23.0	24.1	23.2	24.9	23.1	23.2	23.8	25.0	24.9
Not in labor force.....	11,476	11,669	11,611	11,145	10,989	11,387	11,339	11,274	11,282

<sup>1</sup> The population figures are not adjusted for seasonal variation; therefore, identical numbers appear in the unadjusted and seasonally adjusted columns.

NOTE: Updated population controls are introduced annually with the release of January data.

**HOUSEHOLD DATA**

**Table A-2. Employment status of the civilian population by race, sex, and age**

[Numbers in thousands]

Employment status, race, sex, and age	Not seasonally adjusted			Seasonally adjusted <sup>1</sup>					
	Apr. 2011	Mar. 2012	Apr. 2012	Apr. 2011	Dec. 2011	Jan. 2012	Feb. 2012	Mar. 2012	Apr. 2012
<b>WHITE</b>									
Civilian noninstitutional population.....	192,771	192,788	192,893	192,771	193,682	192,600	192,691	192,788	192,893
Civilian labor force.....	124,140	123,209	122,997	124,642	124,543	123,579	123,848	123,713	123,499
Participation rate.....	64.4	63.9	63.8	64.7	64.3	64.2	64.3	64.2	64.0
Employed.....	114,597	113,909	114,313	114,603	115,254	114,458	114,754	114,697	114,355
Employment-population ratio.....	59.4	59.1	59.3	59.5	59.5	59.4	59.6	59.5	59.3
Unemployed.....	9,542	9,301	8,684	10,039	9,288	9,121	9,094	9,016	9,144
Unemployment rate.....	7.7	7.5	7.1	8.1	7.5	7.4	7.3	7.3	7.4
Not in labor force.....	68,632	69,579	69,896	68,129	69,139	69,021	68,843	69,076	69,394
<b>Men, 20 years and over</b>									
Civilian labor force.....	64,904	64,340	64,212	65,083	65,373	64,495	64,642	64,552	64,410
Participation rate.....	73.7	73.5	73.3	73.9	73.8	73.8	73.9	73.8	73.5
Employed.....	59,869	59,532	59,975	59,909	60,751	60,059	60,245	60,192	60,046
Employment-population ratio.....	68.0	68.0	68.5	68.1	68.6	68.7	68.9	68.8	68.6
Unemployed.....	5,035	4,808	4,237	5,175	4,623	4,436	4,397	4,360	4,364
Unemployment rate.....	7.8	7.5	6.6	8.0	7.1	6.9	6.8	6.8	6.8
<b>Women, 20 years and over</b>									
Civilian labor force.....	54,882	54,476	54,421	54,898	54,481	54,434	54,609	54,473	54,435
Participation rate.....	59.7	58.9	58.8	59.7	59.0	58.9	59.0	58.9	58.8
Employed.....	51,275	50,959	50,919	51,065	50,768	50,729	50,890	50,873	50,719
Employment-population ratio.....	55.8	55.1	55.0	55.6	55.0	54.9	55.0	55.0	54.8
Unemployed.....	3,606	3,517	3,502	3,833	3,713	3,705	3,719	3,600	3,716
Unemployment rate.....	6.6	6.5	6.4	7.0	6.8	6.8	6.8	6.6	6.8
<b>Both sexes, 16 to 19 years</b>									
Civilian labor force.....	4,354	4,393	4,365	4,661	4,688	4,650	4,596	4,688	4,654
Participation rate.....	33.9	34.6	34.4	36.3	36.8	36.5	36.1	36.9	36.7
Employed.....	3,453	3,418	3,419	3,629	3,736	3,670	3,619	3,632	3,591
Employment-population ratio.....	26.9	26.9	26.9	28.3	29.3	28.8	28.4	28.6	28.3
Unemployed.....	901	976	946	1,031	952	980	977	1,056	1,063
Unemployment rate.....	20.7	22.2	21.7	22.1	20.3	21.1	21.3	22.5	22.8
<b>BLACK OR AFRICAN AMERICAN</b>									
Civilian noninstitutional population.....	29,035	29,792	29,824	29,035	29,286	29,727	29,760	29,792	29,824
Civilian labor force.....	17,765	18,339	18,227	17,847	18,110	18,206	18,363	18,427	18,274
Participation rate.....	61.2	61.6	61.1	61.5	61.8	61.2	61.7	61.9	61.3
Employed.....	14,966	15,829	15,940	14,964	15,248	15,725	15,769	15,843	15,891
Employment-population ratio.....	51.5	53.1	53.4	51.5	52.1	52.9	53.0	53.2	53.3
Unemployed.....	2,799	2,510	2,286	2,883	2,862	2,482	2,593	2,584	2,383
Unemployment rate.....	15.8	13.7	12.5	16.2	15.8	13.6	14.1	14.0	13.0
Not in labor force.....	11,270	11,453	11,597	11,187	11,176	11,521	11,398	11,365	11,550
<b>Men, 20 years and over</b>									
Civilian labor force.....	8,091	8,262	8,133	8,102	8,272	8,256	8,239	8,283	8,162
Participation rate.....	68.4	68.2	67.0	68.5	69.0	68.4	68.1	68.4	67.3
Employed.....	6,688	7,044	7,018	6,723	6,969	7,205	7,064	7,137	7,054
Employment-population ratio.....	56.5	58.1	57.8	56.8	58.2	59.7	58.4	58.9	58.1
Unemployed.....	1,403	1,218	1,114	1,379	1,302	1,052	1,175	1,147	1,108
Unemployment rate.....	17.3	14.7	13.7	17.0	15.7	12.7	14.3	13.8	13.6
<b>Women, 20 years and over</b>									
Civilian labor force.....	9,032	9,445	9,459	9,060	9,160	9,287	9,410	9,473	9,443
Participation rate.....	61.9	62.9	62.9	62.1	62.2	62.0	62.8	63.1	62.8
Employed.....	7,877	8,393	8,503	7,839	7,885	8,113	8,240	8,307	8,423
Employment-population ratio.....	54.0	55.9	56.6	53.7	53.5	54.2	55.0	55.4	56.1
Unemployed.....	1,155	1,052	956	1,221	1,275	1,174	1,171	1,166	1,019
Unemployment rate.....	12.8	11.1	10.1	13.5	13.9	12.6	12.4	12.3	10.8
<b>Both sexes, 16 to 19 years</b>									
Civilian labor force.....	642	632	635	686	679	663	713	671	669
Participation rate.....	24.6	23.7	23.9	26.3	26.5	24.7	26.6	25.1	25.1
Employed.....	402	392	419	403	393	407	466	399	413
Employment-population ratio.....	15.4	14.7	15.7	15.5	15.3	15.2	17.4	14.9	15.5
Unemployed.....	241	239	216	283	286	255	247	272	256
Unemployment rate.....	37.5	37.9	34.1	41.3	42.1	38.5	34.7	40.5	38.2
<b>ASIAN</b>									
Civilian noninstitutional population.....	11,378	12,766	12,774	-	-	-	-	-	-

See footnotes at end of table.

**HOUSEHOLD DATA**

**Table A-2. Employment status of the civilian population by race, sex, and age — Continued**

[Numbers in thousands]

Employment status, race, sex, and age	Not seasonally adjusted			Seasonally adjusted <sup>1</sup>					
	Apr. 2011	Mar. 2012	Apr. 2012	Apr. 2011	Dec. 2011	Jan. 2012	Feb. 2012	Mar. 2012	Apr. 2012
Civilian labor force.....	7,295	8,113	7,965	-	-	-	-	-	-
Participation rate.....	64.1	63.6	62.4	-	-	-	-	-	-
Employed.....	6,832	7,607	7,553	-	-	-	-	-	-
Employment-population ratio.....	60.0	59.6	59.1	-	-	-	-	-	-
Unemployed.....	463	506	412	-	-	-	-	-	-
Unemployment rate.....	6.4	6.2	5.2	-	-	-	-	-	-
Not in labor force.....	4,083	4,652	4,809	-	-	-	-	-	-

<sup>1</sup> The population figures are not adjusted for seasonal variation; therefore, identical numbers appear in the unadjusted and seasonally adjusted columns.

- Data not available.

NOTE: Estimates for the above race groups will not sum to totals shown in table A-1 because data are not presented for all races. Updated population controls are introduced annually with the release of January data.

**HOUSEHOLD DATA**

**Table A-3. Employment status of the Hispanic or Latino population by sex and age**

[Numbers in thousands]

Employment status, sex, and age	Not seasonally adjusted			Seasonally adjusted <sup>1</sup>					
	Apr. 2011	Mar. 2012	Apr. 2012	Apr. 2011	Dec. 2011	Jan. 2012	Feb. 2012	Mar. 2012	Apr. 2012
<b>HISPANIC OR LATINO ETHNICITY</b>									
Civilian noninstitutional population.....	34,233	36,463	36,546	34,233	34,885	36,301	36,384	36,463	36,546
Civilian labor force.....	22,672	24,109	24,201	22,783	23,270	24,045	24,206	24,128	24,253
Participation rate.....	66.2	66.1	66.2	66.6	66.7	66.2	66.5	66.2	66.4
Employed.....	20,124	21,510	21,839	20,102	20,699	21,513	21,628	21,638	21,755
Employment-population ratio.....	58.8	59.0	59.8	58.7	59.3	59.3	59.4	59.3	59.5
Unemployed.....	2,548	2,598	2,362	2,680	2,571	2,532	2,579	2,491	2,498
Unemployment rate.....	11.2	10.8	9.8	11.8	11.0	10.5	10.7	10.3	10.3
Not in labor force.....	11,561	12,354	12,345	11,450	11,615	12,256	12,178	12,335	12,293
<b>Men, 20 years and over</b>									
Civilian labor force.....	12,899	13,246	13,284	-	-	-	-	-	-
Participation rate.....	81.4	80.8	80.8	-	-	-	-	-	-
Employed.....	11,568	11,952	12,146	-	-	-	-	-	-
Employment-population ratio.....	73.0	72.9	73.9	-	-	-	-	-	-
Unemployed.....	1,331	1,294	1,138	-	-	-	-	-	-
Unemployment rate.....	10.3	9.8	8.6	-	-	-	-	-	-
<b>Women, 20 years and over</b>									
Civilian labor force.....	8,896	9,813	9,826	-	-	-	-	-	-
Participation rate.....	59.3	59.8	59.7	-	-	-	-	-	-
Employed.....	7,884	8,829	8,886	-	-	-	-	-	-
Employment-population ratio.....	52.6	53.8	54.0	-	-	-	-	-	-
Unemployed.....	1,012	984	939	-	-	-	-	-	-
Unemployment rate.....	11.4	10.0	9.6	-	-	-	-	-	-
<b>Both sexes, 16 to 19 years</b>									
Civilian labor force.....	878	1,050	1,092	-	-	-	-	-	-
Participation rate.....	25.9	28.8	29.9	-	-	-	-	-	-
Employed.....	672	730	807	-	-	-	-	-	-
Employment-population ratio.....	19.8	20.0	22.1	-	-	-	-	-	-
Unemployed.....	206	320	285	-	-	-	-	-	-
Unemployment rate.....	23.4	30.5	26.1	-	-	-	-	-	-

1 The population figures are not adjusted for seasonal variation; therefore, identical numbers appear in the unadjusted and seasonally adjusted columns.

- Data not available.

NOTE: Persons whose ethnicity is identified as Hispanic or Latino may be of any race. Updated population controls are introduced annually with the release of January data.

**HOUSEHOLD DATA**

**Table A-4. Employment status of the civilian population 25 years and over by educational attainment**

[Numbers in thousands]

Educational attainment	Not seasonally adjusted			Seasonally adjusted					
	Apr. 2011	Mar. 2012	Apr. 2012	Apr. 2011	Dec. 2011	Jan. 2012	Feb. 2012	Mar. 2012	Apr. 2012
<b>Less than a high school diploma</b>									
Civilian labor force.....	11,703	11,349	11,490	11,558	11,688	11,469	11,488	11,493	11,366
Participation rate.....	46.1	45.7	45.7	45.5	46.7	45.6	46.6	46.3	45.2
Employed.....	10,000	9,788	10,069	9,869	10,080	9,968	10,006	10,044	9,947
Employment-population ratio.....	39.4	39.4	40.1	38.8	40.3	39.7	40.6	40.4	39.6
Unemployed.....	1,703	1,561	1,421	1,689	1,608	1,501	1,483	1,449	1,419
Unemployment rate.....	14.5	13.8	12.4	14.6	13.8	13.1	12.9	12.6	12.5
<b>High school graduates, no college<sup>1</sup></b>									
Civilian labor force.....	37,485	36,614	36,812	37,483	36,902	36,850	36,799	36,475	36,718
Participation rate.....	60.4	59.2	59.3	60.4	59.8	59.6	59.0	59.0	59.2
Employed.....	33,886	33,402	33,959	33,864	33,684	33,737	33,761	33,573	33,834
Employment-population ratio.....	54.6	54.0	54.7	54.6	54.5	54.6	54.1	54.3	54.5
Unemployed.....	3,599	3,212	2,852	3,619	3,218	3,113	3,039	2,902	2,884
Unemployment rate.....	9.6	8.8	7.7	9.7	8.7	8.4	8.3	8.0	7.9
<b>Some college or associate degree</b>									
Civilian labor force.....	36,463	37,369	36,966	36,590	37,024	37,214	37,282	37,405	37,168
Participation rate.....	69.3	69.3	68.6	69.6	69.1	69.2	69.1	69.3	69.0
Employed.....	33,829	34,507	34,270	33,844	34,167	34,525	34,571	34,613	34,344
Employment-population ratio.....	64.3	64.0	63.6	64.4	63.7	64.2	64.1	64.2	63.7
Unemployed.....	2,634	2,863	2,696	2,745	2,857	2,689	2,711	2,793	2,824
Unemployment rate.....	7.2	7.7	7.3	7.5	7.7	7.2	7.3	7.5	7.6
<b>Bachelor's degree and higher<sup>2</sup></b>									
Civilian labor force.....	46,913	48,389	48,075	46,889	47,131	47,481	47,890	48,191	47,977
Participation rate.....	77.0	76.6	76.4	77.0	76.0	75.6	76.4	76.2	76.2
Employed.....	44,976	46,415	46,310	44,796	45,201	45,492	45,875	46,189	46,062
Employment-population ratio.....	73.8	73.4	73.6	73.6	72.9	72.4	73.1	73.1	73.2
Unemployed.....	1,937	1,974	1,765	2,093	1,930	1,989	2,015	2,002	1,915
Unemployment rate.....	4.1	4.1	3.7	4.5	4.1	4.2	4.2	4.2	4.0

1 Includes persons with a high school diploma or equivalent.

2 Includes persons with bachelor's, master's, professional, and doctoral degrees.

NOTE: Updated population controls are introduced annually with the release of January data.

**HOUSEHOLD DATA**

**Table A-5. Employment status of the civilian population 18 years and over by veteran status, period of service, and sex, not seasonally adjusted**

[Numbers in thousands]

Employment status, veteran status, and period of service	Total		Men		Women	
	Apr. 2011	Apr. 2012	Apr. 2011	Apr. 2012	Apr. 2011	Apr. 2012
<b>VETERANS, 18 years and over</b>						
Civilian noninstitutional population.....	21,697	21,256	19,898	19,444	1,799	1,812
Civilian labor force.....	11,318	11,114	10,191	9,994	1,128	1,120
Participation rate.....	52.2	52.3	51.2	51.4	62.7	61.8
Employed.....	10,445	10,329	9,427	9,266	1,018	1,063
Employment-population ratio.....	48.1	48.6	47.4	47.7	56.6	58.7
Unemployed.....	873	785	764	729	110	57
Unemployment rate.....	7.7	7.1	7.5	7.3	9.7	5.0
Not in labor force.....	10,379	10,142	9,707	9,450	671	692
<b>Gulf War-era II veterans</b>						
Civilian noninstitutional population.....	2,466	2,701	1,996	2,214	470	487
Civilian labor force.....	1,962	2,127	1,646	1,814	315	314
Participation rate.....	79.5	78.8	82.5	81.9	67.1	64.3
Employed.....	1,748	1,932	1,454	1,650	293	283
Employment-population ratio.....	70.9	71.5	72.9	74.5	62.5	58.0
Unemployed.....	214	195	192	164	22	31
Unemployment rate.....	10.9	9.2	11.7	9.0	6.9	9.9
Not in labor force.....	505	574	350	400	155	174
<b>Gulf War-era I veterans</b>						
Civilian noninstitutional population.....	2,855	2,950	2,417	2,471	437	478
Civilian labor force.....	2,406	2,479	2,087	2,114	319	366
Participation rate.....	84.3	84.1	86.3	85.5	72.9	76.5
Employed.....	2,248	2,351	1,953	1,994	296	357
Employment-population ratio.....	78.7	79.7	80.8	80.7	67.6	74.6
Unemployed.....	158	129	135	120	23	9
Unemployment rate.....	6.6	5.2	6.5	5.7	7.3	2.4
Not in labor force.....	449	470	330	358	119	112
<b>World War II, Korean War, and Vietnam-era veterans</b>						
Civilian noninstitutional population.....	10,529	9,949	10,201	9,627	327	322
Civilian labor force.....	3,582	3,293	3,444	3,170	139	122
Participation rate.....	34.0	33.1	33.8	32.9	42.4	38.1
Employed.....	3,354	3,072	3,235	2,956	119	116
Employment-population ratio.....	31.9	30.9	31.7	30.7	36.5	36.0
Unemployed.....	229	221	209	215	19	7
Unemployment rate.....	6.4	6.7	6.1	6.8	13.9	5.3
Not in labor force.....	6,946	6,656	6,758	6,457	189	199
<b>Veterans of other service periods</b>						
Civilian noninstitutional population.....	5,847	5,656	5,283	5,131	565	525
Civilian labor force.....	3,368	3,214	3,013	2,897	355	318
Participation rate.....	57.6	56.8	57.0	56.4	62.9	60.6
Employed.....	3,095	2,974	2,786	2,666	309	308
Employment-population ratio.....	52.9	52.6	52.7	52.0	54.8	58.7
Unemployed.....	273	240	227	230	45	10
Unemployment rate.....	8.1	7.5	7.6	8.0	12.8	3.1
Not in labor force.....	2,479	2,441	2,270	2,235	210	207
<b>NONVETERANS, 18 years and over</b>						
Civilian noninstitutional population.....	208,727	212,630	91,652	93,088	117,075	119,542
Civilian labor force.....	139,957	141,057	70,399	70,766	69,558	70,291
Participation rate.....	67.1	66.3	76.8	76.0	59.4	58.8
Employed.....	128,072	130,362	63,803	65,175	64,269	65,187
Employment-population ratio.....	61.4	61.3	69.6	70.0	54.9	54.5
Unemployed.....	11,885	10,695	6,596	5,591	5,289	5,104
Unemployment rate.....	8.5	7.6	9.4	7.9	7.6	7.3
Not in labor force.....	68,771	71,572	21,253	22,321	47,518	49,251

NOTE: Veterans served on active duty in the U.S. Armed Forces and were not on active duty at the time of the survey. Nonveterans never served on active duty in the U.S. Armed Forces. Veterans could have served anywhere in the world during these periods of service: Gulf War era II (September 2001-present), Gulf War era I (August 1990-August 2001), Vietnam era (August 1964-April 1975), Korean War (July 1950-January 1955), World War II (December 1941-December 1946), and other service periods (all other time periods). Veterans who served in more than one wartime period are classified only in the most recent one. Veterans who served during one of the selected wartime periods and another period are classified only in the wartime period. Updated population controls are introduced annually with the release of January data.



**HOUSEHOLD DATA**

**Table A-6. Employment status of the civilian population by sex, age, and disability status, not seasonally adjusted**

[Numbers in thousands]

Employment status, sex, and age	Persons with a disability		Persons with no disability	
	Apr. 2011	Apr. 2012	Apr. 2011	Apr. 2012
<b>TOTAL, 16 years and over</b>				
Civilian noninstitutional population.....	27,603	28,209	211,543	214,574
Civilian labor force.....	5,699	5,736	147,199	148,169
Participation rate.....	20.6	20.3	69.6	69.1
Employed.....	4,873	5,021	134,789	136,974
Employment-population ratio.....	17.7	17.8	63.7	63.8
Unemployed.....	827	715	12,410	11,195
Unemployment rate.....	14.5	12.5	8.4	7.6
Not in labor force.....	21,904	22,473	64,344	66,406
<b>Men, 16 to 64 years</b>				
Civilian labor force.....	2,591	2,488	74,820	74,867
Participation rate.....	34.5	33.4	82.0	81.9
Employed.....	2,172	2,163	67,901	68,876
Employment-population ratio.....	28.9	29.1	74.4	75.4
Unemployed.....	418	325	6,920	5,991
Unemployment rate.....	16.1	13.1	9.2	8.0
Not in labor force.....	4,929	4,951	16,399	16,541
<b>Women, 16 to 64 years</b>				
Civilian labor force.....	2,229	2,296	66,156	66,573
Participation rate.....	28.9	29.1	71.0	70.4
Employed.....	1,890	1,964	61,012	61,761
Employment-population ratio.....	24.5	24.9	65.5	65.3
Unemployed.....	339	332	5,144	4,811
Unemployment rate.....	15.2	14.5	7.8	7.2
Not in labor force.....	5,497	5,592	27,047	27,996
<b>Both sexes, 65 years and over</b>				
Civilian labor force.....	879	952	6,223	6,729
Participation rate.....	7.1	7.4	22.9	23.5
Employed.....	810	894	5,876	6,337
Employment-population ratio.....	6.6	6.9	21.7	22.2
Unemployed.....	69	58	347	393
Unemployment rate.....	7.8	6.1	5.6	5.8
Not in labor force.....	11,478	11,930	20,898	21,869

NOTE: A person with a disability has at least one of the following conditions: is deaf or has serious difficulty hearing; is blind or has serious difficulty seeing even when wearing glasses; has serious difficulty concentrating, remembering, or making decisions because of a physical, mental, or emotional condition; has serious difficulty walking or climbing stairs; has difficulty dressing or bathing; or has difficulty doing errands alone such as visiting a doctor's office or shopping because of a physical, mental, or emotional condition. Updated population controls are introduced annually with the release of January data.

**HOUSEHOLD DATA**

**Table A-7. Employment status of the civilian population by nativity and sex, not seasonally adjusted**

[Numbers in thousands]

Employment status and nativity	Total		Men		Women	
	Apr. 2011	Apr. 2012	Apr. 2011	Apr. 2012	Apr. 2011	Apr. 2012
<b>Foreign born, 16 years and over</b>						
Civilian noninstitutional population.....	35,737	37,215	17,848	18,249	17,889	18,966
Civilian labor force.....	23,915	24,460	14,174	14,220	9,741	10,241
Participation rate.....	66.9	65.7	79.4	77.9	54.5	54.0
Employed.....	21,741	22,619	12,911	13,233	8,830	9,386
Employment-population ratio.....	60.8	60.8	72.3	72.5	49.4	49.5
Unemployed.....	2,174	1,842	1,263	986	911	855
Unemployment rate.....	9.1	7.5	8.9	6.9	9.3	8.3
Not in labor force.....	11,822	12,755	3,674	4,030	8,148	8,725
<b>Native born, 16 years and over</b>						
Civilian noninstitutional population.....	203,409	205,569	98,219	98,831	105,191	106,737
Civilian labor force.....	128,984	129,444	67,180	67,409	61,804	62,035
Participation rate.....	63.4	63.0	68.4	68.2	58.8	58.1
Employed.....	117,920	119,376	60,850	61,840	57,070	57,535
Employment-population ratio.....	58.0	58.1	62.0	62.6	54.3	53.9
Unemployed.....	11,063	10,068	6,330	5,569	4,733	4,500
Unemployment rate.....	8.6	7.8	9.4	8.3	7.7	7.3
Not in labor force.....	74,425	76,124	31,039	31,422	43,387	44,702

NOTE: The foreign born are those residing in the United States who were not U.S. citizens at birth. That is, they were born outside the United States or one of its outlying areas such as Puerto Rico or Guam, to parents neither of whom was a U.S. citizen. The native born are persons who were born in the United States or one of its outlying areas such as Puerto Rico or Guam or who were born abroad of at least one parent who was a U.S. citizen. Updated population controls are introduced annually with the release of January data.

**HOUSEHOLD DATA**

**Table A-8. Employed persons by class of worker and part-time status**

[In thousands]

Category	Not seasonally adjusted			Seasonally adjusted					
	Apr. 2011	Mar. 2012	Apr. 2012	Apr. 2011	Dec. 2011	Jan. 2012	Feb. 2012	Mar. 2012	Apr. 2012
<b>CLASS OF WORKER</b>									
Agriculture and related industries.....	2,061	2,123	2,107	2,090	2,349	2,208	2,185	2,218	2,150
Wage and salary workers <sup>1</sup> .....	1,198	1,296	1,282	1,241	1,429	1,376	1,353	1,394	1,342
Self-employed workers, unincorporated.....	830	799	798	825	874	800	814	811	793
Unpaid family workers.....	33	28	26	-	-	-	-	-	-
Nonagricultural industries.....	137,601	139,290	139,888	137,505	138,411	139,491	139,945	139,984	139,749
Wage and salary workers <sup>1</sup> .....	128,814	130,778	131,257	128,756	129,662	130,569	131,365	131,370	131,136
Government.....	21,112	20,536	20,356	20,629	20,616	20,583	20,617	20,338	19,896
Private industries.....	107,702	110,241	110,901	108,167	109,064	109,966	110,778	111,114	111,249
Private households.....	671	656	724	-	-	-	-	-	-
Other industries.....	107,031	109,585	110,176	107,466	108,407	109,353	110,138	110,469	110,527
Self-employed workers, unincorporated.....	8,693	8,433	8,558	8,645	8,587	8,769	8,477	8,514	8,512
Unpaid family workers.....	94	79	72	-	-	-	-	-	-
<b>PERSONS AT WORK PART TIME<sup>2</sup></b>									
<b>  All industries</b>									
Part time for economic reasons <sup>3</sup> .....	8,425	7,867	7,694	8,571	8,098	8,230	8,119	7,672	7,853
Slack work or business conditions.....	5,547	5,146	4,997	5,714	5,305	5,372	5,446	5,081	5,187
Could only find part-time work.....	2,605	2,427	2,467	2,444	2,419	2,551	2,404	2,341	2,367
Part time for noneconomic reasons <sup>4</sup> .....	19,163	19,022	19,443	18,326	18,372	18,636	18,827	18,523	18,832
<b>    Nonagricultural industries</b>									
Part time for economic reasons <sup>3</sup> .....	8,305	7,753	7,581	8,453	7,952	8,083	7,988	7,584	7,737
Slack work or business conditions.....	5,448	5,062	4,909	5,602	5,199	5,278	5,356	5,000	5,086
Could only find part-time work.....	2,595	2,418	2,456	2,448	2,423	2,563	2,365	2,295	2,324
Part time for noneconomic reasons <sup>4</sup> .....	18,803	18,615	19,097	18,004	17,969	18,298	18,399	18,100	18,418

1 Includes self-employed workers whose businesses are incorporated.

2 Refers to those who worked 1 to 34 hours during the survey reference week and excludes employed persons who were absent from their jobs for the entire week.

3 Refers to those who worked 1 to 34 hours during the reference week for an economic reason such as slack work or unfavorable business conditions, inability to find full-time work, or seasonal declines in demand.

4 Refers to persons who usually work part time for noneconomic reasons such as childcare problems, family or personal obligations, school or training, retirement or Social Security limits on earnings, and other reasons. This excludes persons who usually work full time but worked only 1 to 34 hours during the reference week for reasons such as vacations, holidays, illness, and bad weather.

- Data not available.

NOTE: Detail for the seasonally adjusted data shown in this table will not necessarily add to totals because of the independent seasonal adjustment of the various series. Updated population controls are introduced annually with the release of January data.

# HOUSEHOLD DATA

## Table A-9. Selected employment indicators

[Numbers in thousands]

Characteristic	Not seasonally adjusted			Seasonally adjusted					
	Apr. 2011	Mar. 2012	Apr. 2012	Apr. 2011	Dec. 2011	Jan. 2012	Feb. 2012	Mar. 2012	Apr. 2012
<b>AGE AND SEX</b>									
Total, 16 years and over.....	139,661	141,412	141,995	139,628	140,790	141,637	142,065	142,034	141,865
16 to 19 years.....	4,106	4,089	4,163	4,255	4,387	4,389	4,371	4,335	4,321
16 to 17 years.....	1,145	1,233	1,304	1,262	1,304	1,333	1,337	1,395	1,421
18 to 19 years.....	2,961	2,856	2,859	2,982	3,060	3,064	3,050	2,955	2,875
20 years and over.....	135,555	137,324	137,832	135,373	136,403	137,248	137,694	137,699	137,544
20 to 24 years.....	12,864	13,212	13,224	12,958	13,195	13,335	13,395	13,371	13,329
25 years and over.....	122,691	124,112	124,608	122,364	123,234	123,901	124,243	124,407	124,166
25 to 54 years.....	93,762	93,816	94,307	93,638	93,882	93,991	94,056	94,267	94,128
25 to 34 years.....	30,318	30,359	30,750	30,343	30,771	30,367	30,483	30,568	30,724
35 to 44 years.....	30,483	30,574	30,640	30,404	30,271	30,614	30,638	30,672	30,539
45 to 54 years.....	32,961	32,884	32,917	32,891	32,841	33,009	32,935	33,027	32,866
55 years and over.....	28,929	30,295	30,300	28,726	29,352	29,910	30,187	30,140	30,038
Men, 16 years and over.....	73,761	74,507	75,074	73,969	75,235	75,288	75,318	75,369	75,256
16 to 19 years.....	1,939	1,940	2,064	2,027	2,155	2,118	2,079	2,083	2,136
16 to 17 years.....	531	590	633	586	635	620	650	656	685
18 to 19 years.....	1,408	1,350	1,431	1,441	1,501	1,487	1,424	1,424	1,461
20 years and over.....	71,822	72,567	73,010	71,942	73,080	73,170	73,240	73,286	73,119
20 to 24 years.....	6,651	6,776	6,778	6,716	6,998	7,003	6,851	6,927	6,863
25 years and over.....	65,171	65,791	66,232	65,148	66,084	66,169	66,376	66,327	66,156
25 to 54 years.....	49,988	49,836	50,290	50,059	50,528	50,358	50,382	50,393	50,329
25 to 34 years.....	16,447	16,265	16,566	16,534	16,885	16,440	16,498	16,538	16,624
35 to 44 years.....	16,401	16,326	16,417	16,409	16,422	16,573	16,564	16,470	16,425
45 to 54 years.....	17,140	17,246	17,308	17,116	17,221	17,346	17,319	17,385	17,280
55 years and over.....	15,183	15,954	15,942	15,089	15,556	15,811	15,994	15,934	15,827
Women, 16 years and over.....	65,900	66,906	66,921	65,659	65,555	66,349	66,747	66,665	66,609
16 to 19 years.....	2,167	2,149	2,099	2,228	2,232	2,270	2,293	2,252	2,184
16 to 17 years.....	614	644	671	677	669	713	687	739	736
18 to 19 years.....	1,554	1,506	1,427	1,541	1,559	1,577	1,625	1,531	1,414
20 years and over.....	63,733	64,756	64,822	63,431	63,323	64,078	64,454	64,413	64,425
20 to 24 years.....	6,213	6,436	6,446	6,242	6,198	6,332	6,544	6,444	6,467
25 years and over.....	57,520	58,321	58,376	57,216	57,150	57,732	57,867	58,079	58,010
25 to 54 years.....	43,774	43,980	44,017	43,579	43,354	43,633	43,674	43,873	43,800
25 to 34 years.....	13,871	14,093	14,185	13,809	13,886	13,928	13,985	14,030	14,099
35 to 44 years.....	14,082	14,248	14,223	13,995	13,849	14,041	14,074	14,202	14,114
45 to 54 years.....	15,821	15,638	15,609	15,775	15,620	15,664	15,615	15,642	15,586
55 years and over.....	13,746	14,341	14,359	13,637	13,796	14,099	14,193	14,206	14,211
<b>MARITAL STATUS</b>									
Married men, spouse present.....	42,992	43,320	43,530	43,015	43,709	43,658	43,556	43,635	43,582
Married women, spouse present.....	34,211	34,477	34,369	34,029	34,177	34,445	34,341	34,325	34,207
Women who maintain families.....	8,968	9,429	9,530	-	-	-	-	-	-
<b>FULL- OR PART-TIME STATUS</b>									
Full-time workers <sup>1</sup> .....	111,844	113,916	113,999	112,347	113,765	113,845	114,408	115,290	114,478
Part-time workers <sup>2</sup> .....	27,817	27,497	27,996	27,229	27,040	27,739	27,576	26,912	27,420
<b>MULTIPLE JOBHOLDERS</b>									
Total multiple jobholders.....	6,887	7,052	6,947	6,798	7,013	7,038	6,999	6,985	6,870
Percent of total employed.....	4.9	5.0	4.9	4.9	5.0	5.0	4.9	4.9	4.8
<b>SELF-EMPLOYMENT</b>									
Self-employed workers, incorporated.....	5,030	5,130	5,258	-	-	-	-	-	-
Self-employed workers, unincorporated.....	9,523	9,232	9,357	9,470	9,461	9,569	9,291	9,325	9,305

1 Employed full-time workers are persons who usually work 35 hours or more per week.

2 Employed part-time workers are persons who usually work less than 35 hours per week.

- Data not available.

NOTE: Detail for the seasonally adjusted data shown in this table will not necessarily add to totals because of the independent seasonal adjustment of the various series. Updated population controls are introduced annually with the release of January data.

**HOUSEHOLD DATA**

**Table A-10. Selected unemployment indicators, seasonally adjusted**

Characteristic	Number of unemployed persons (in thousands)			Unemployment rates					
	Apr. 2011	Mar. 2012	Apr. 2012	Apr. 2011	Dec. 2011	Jan. 2012	Feb. 2012	Mar. 2012	Apr. 2012
<b>AGE AND SEX</b>									
Total, 16 years and over.....	13,792	12,673	12,500	9.0	8.5	8.3	8.3	8.2	8.1
16 to 19 years.....	1,410	1,447	1,432	24.9	23.1	23.2	23.8	25.0	24.9
16 to 17 years.....	560	564	509	30.7	27.8	28.8	29.9	28.8	26.4
18 to 19 years.....	855	877	935	22.3	21.3	20.5	20.8	22.9	24.5
20 years and over.....	12,383	11,226	11,068	8.4	8.0	7.7	7.7	7.5	7.4
20 to 24 years.....	2,263	2,028	2,029	14.9	14.4	13.3	13.8	13.2	13.2
25 years and over.....	10,132	9,140	9,034	7.6	7.2	7.0	7.0	6.8	6.8
25 to 54 years.....	8,125	7,191	7,017	8.0	7.6	7.4	7.3	7.1	6.9
25 to 34 years.....	3,196	2,878	2,711	9.5	9.4	9.0	8.7	8.6	8.1
35 to 44 years.....	2,410	2,112	2,139	7.3	6.8	6.8	6.8	6.4	6.5
45 to 54 years.....	2,519	2,202	2,167	7.1	6.5	6.4	6.4	6.2	6.2
55 years and over.....	2,000	1,988	2,026	6.5	6.2	5.9	5.9	6.2	6.3
Men, 16 years and over.....	7,747	6,810	6,727	9.5	8.7	8.3	8.3	8.3	8.2
16 to 19 years.....	794	759	797	28.1	26.6	25.3	27.0	26.7	27.2
16 to 17 years.....	279	283	279	32.3	30.5	32.0	33.5	30.1	28.9
18 to 19 years.....	516	476	521	26.4	25.1	22.3	23.9	25.1	26.3
20 years and over.....	6,953	6,051	5,930	8.8	8.0	7.7	7.7	7.6	7.5
20 to 24 years.....	1,276	1,135	1,124	16.0	15.3	14.2	15.6	14.1	14.1
25 years and over.....	5,647	4,875	4,781	8.0	7.2	6.9	6.7	6.8	6.7
25 to 54 years.....	4,520	3,812	3,720	8.3	7.5	7.2	7.1	7.0	6.9
25 to 34 years.....	1,814	1,554	1,459	9.9	9.5	9.0	8.6	8.6	8.1
35 to 44 years.....	1,280	1,147	1,129	7.2	6.7	6.4	6.4	6.5	6.4
45 to 54 years.....	1,425	1,111	1,132	7.7	6.3	6.2	6.2	6.0	6.1
55 years and over.....	1,127	1,063	1,062	6.9	6.1	5.9	5.7	6.3	6.3
Women, 16 years and over.....	6,045	5,863	5,773	8.4	8.3	8.3	8.2	8.1	8.0
16 to 19 years.....	615	687	635	21.6	19.3	21.1	20.7	23.4	22.5
16 to 17 years.....	281	281	230	29.4	25.0	25.8	26.1	27.6	23.8
18 to 19 years.....	339	401	414	18.0	17.1	18.6	17.8	20.7	22.7
20 years and over.....	5,430	5,176	5,137	7.9	7.9	7.7	7.7	7.4	7.4
20 to 24 years.....	986	893	905	13.6	13.4	12.3	11.7	12.2	12.3
25 years and over.....	4,485	4,265	4,253	7.3	7.3	7.2	7.2	6.8	6.8
25 to 54 years.....	3,605	3,380	3,297	7.6	7.6	7.6	7.6	7.2	7.0
25 to 34 years.....	1,382	1,324	1,252	9.1	9.3	9.0	8.8	8.6	8.2
35 to 44 years.....	1,130	965	1,010	7.5	7.0	7.4	7.3	6.4	6.7
45 to 54 years.....	1,094	1,091	1,035	6.5	6.7	6.6	6.6	6.5	6.2
55 years and over <sup>1</sup> .....	782	895	878	5.4	5.7	5.9	6.1	5.9	5.8
<b>MARITAL STATUS</b>									
Married men, spouse present.....	2,777	2,360	2,370	6.1	5.1	5.1	5.0	5.1	5.2
Married women, spouse present.....	2,055	1,912	1,919	5.7	5.4	5.6	5.5	5.3	5.3
Women who maintain families <sup>1</sup> .....	1,193	1,139	1,078	11.7	12.9	12.0	11.7	10.8	10.2
<b>FULL- OR PART-TIME STATUS</b>									
Full-time workers <sup>2</sup> .....	11,974	10,863	10,691	9.6	9.0	8.8	8.8	8.6	8.5
Part-time workers <sup>3</sup> .....	1,834	1,765	1,846	6.3	6.3	5.9	6.0	6.2	6.3

1 Not seasonally adjusted.

2 Full-time workers are unemployed persons who have expressed a desire to work full time (35 hours or more per week) or are on layoff from full-time jobs.

3 Part-time workers are unemployed persons who have expressed a desire to work part time (less than 35 hours per week) or are on layoff from part-time jobs.

NOTE: Detail for the seasonally adjusted data shown in this table will not necessarily add to totals because of the independent seasonal adjustment of the various series. Updated population controls are introduced annually with the release of January data.

**HOUSEHOLD DATA**

**Table A-11. Unemployed persons by reason for unemployment**

[Numbers in thousands]

Reason	Not seasonally adjusted			Seasonally adjusted					
	Apr. 2011	Mar. 2012	Apr. 2012	Apr. 2011	Dec. 2011	Jan. 2012	Feb. 2012	Mar. 2012	Apr. 2012
<b>NUMBER OF UNEMPLOYED</b>									
Job losers and persons who completed temporary jobs.....	7,958	7,415	6,555	8,181	7,602	7,321	7,209	7,020	6,852
On temporary layoff.....	1,186	1,354	1,009	1,241	1,216	1,284	1,135	1,120	1,083
Not on temporary layoff.....	6,772	6,060	5,546	6,941	6,386	6,037	6,075	5,900	5,768
Permanent job losers.....	5,449	4,742	4,397	5,524	5,089	4,807	4,755	4,632	4,529
Persons who completed temporary jobs.....	1,323	1,318	1,149	1,417	1,296	1,230	1,320	1,268	1,239
Job leavers.....	911	1,064	962	944	953	939	1,031	1,117	997
Reentrants.....	3,217	3,189	3,184	3,387	3,399	3,325	3,361	3,269	3,341
New entrants.....	1,151	1,236	1,210	1,322	1,280	1,253	1,392	1,433	1,384
<b>PERCENT DISTRIBUTION</b>									
Job losers and persons who completed temporary jobs.....	60.1	57.5	55.0	59.1	57.4	57.0	55.5	54.7	54.5
On temporary layoff.....	9.0	10.5	8.5	9.0	9.2	10.0	8.7	8.7	8.6
Not on temporary layoff.....	51.2	47.0	46.6	50.2	48.3	47.0	46.7	46.0	45.9
Job leavers.....	6.9	8.2	8.1	6.8	7.2	7.3	7.9	8.7	7.9
Reentrants.....	24.3	24.7	26.7	24.5	25.7	25.9	25.9	25.5	26.6
New entrants.....	8.7	9.6	10.2	9.6	9.7	9.8	10.7	11.2	11.0
<b>UNEMPLOYED AS A PERCENT OF THE CIVILIAN LABOR FORCE</b>									
Job losers and persons who completed temporary jobs.....	5.2	4.8	4.3	5.3	4.9	4.7	4.7	4.5	4.4
Job leavers.....	0.6	0.7	0.6	0.6	0.6	0.6	0.7	0.7	0.6
Reentrants.....	2.1	2.1	2.1	2.2	2.2	2.2	2.2	2.1	2.2
New entrants.....	0.8	0.8	0.8	0.9	0.8	0.8	0.9	0.9	0.9

NOTE: Updated population controls are introduced annually with the release of January data.

**HOUSEHOLD DATA**

**Table A-12. Unemployed persons by duration of unemployment**

[Numbers in thousands]

Duration	Not seasonally adjusted			Seasonally adjusted					
	Apr. 2011	Mar. 2012	Apr. 2012	Apr. 2011	Dec. 2011	Jan. 2012	Feb. 2012	Mar. 2012	Apr. 2012
<b>NUMBER OF UNEMPLOYED</b>									
Less than 5 weeks.....	2,325	2,270	2,165	2,725	2,669	2,486	2,541	2,572	2,543
5 to 14 weeks.....	2,478	3,005	2,368	2,931	2,858	2,884	2,807	2,754	2,814
15 weeks and over.....	8,434	7,629	7,377	7,919	7,628	7,498	7,397	7,175	6,984
15 to 26 weeks.....	2,333	2,244	2,109	2,058	2,039	1,980	1,971	1,867	1,884
27 weeks and over.....	6,101	5,385	5,268	5,860	5,588	5,518	5,426	5,308	5,101
Average (mean) duration, in weeks <sup>1</sup> .....	41.4	40.2	42.0	38.3	40.8	40.1	40.0	39.4	39.1
Median duration, in weeks.....	24.3	20.5	22.3	20.8	21.0	21.1	20.3	19.9	19.4
<b>PERCENT DISTRIBUTION</b>									
Less than 5 weeks.....	17.6	17.6	18.2	20.1	20.3	19.3	19.9	20.6	20.6
5 to 14 weeks.....	18.7	23.3	19.9	21.6	21.7	22.4	22.0	22.0	22.8
15 weeks and over.....	63.7	59.1	61.9	58.3	58.0	58.3	58.0	57.4	56.6
15 to 26 weeks.....	17.6	17.4	17.7	15.2	15.5	15.4	15.5	14.9	15.3
27 weeks and over.....	46.1	41.7	44.2	43.2	42.5	42.9	42.6	42.5	41.3

<sup>1</sup> Beginning in January 2011, this series reflects a change to the collection of data on unemployment duration. For more information, see [www.bls.gov/cps/duration.htm](http://www.bls.gov/cps/duration.htm).

NOTE: Updated population controls are introduced annually with the release of January data.

**HOUSEHOLD DATA**

**Table A-13. Employed and unemployed persons by occupation, not seasonally adjusted**

[Numbers in thousands]

Occupation	Employed		Unemployed		Unemployment rates	
	Apr. 2011	Apr. 2012	Apr. 2011	Apr. 2012	Apr. 2011	Apr. 2012
Total, 16 years and over <sup>1</sup> .....	139,661	141,995	13,237	11,910	8.7	7.7
Management, professional, and related occupations.....	53,216	54,055	2,196	2,062	4.0	3.7
Management, business, and financial operations occupations.....	21,640	22,590	1,050	934	4.6	4.0
Professional and related occupations.....	31,576	31,465	1,146	1,128	3.5	3.5
Service occupations.....	24,354	25,303	2,598	2,426	9.6	8.8
Sales and office occupations.....	32,974	33,290	2,929	2,745	8.2	7.6
Sales and related occupations.....	15,134	15,320	1,402	1,266	8.5	7.6
Office and administrative support occupations.....	17,841	17,970	1,528	1,478	7.9	7.6
Natural resources, construction, and maintenance occupations.....	12,735	12,377	2,110	1,608	14.2	11.5
Farming, fishing, and forestry occupations.....	862	913	206	196	19.3	17.6
Construction and extraction occupations.....	7,042	6,734	1,448	1,137	17.1	14.4
Installation, maintenance, and repair occupations.....	4,831	4,731	455	276	8.6	5.5
Production, transportation, and material moving occupations.....	16,382	16,970	2,208	1,822	11.9	9.7
Production occupations.....	8,098	8,348	1,074	863	11.7	9.4
Transportation and material moving occupations.....	8,284	8,622	1,134	959	12.0	10.0

<sup>1</sup> Persons with no previous work experience and persons whose last job was in the U.S. Armed Forces are included in the unemployed total.

NOTE: Updated population controls are introduced annually with the release of January data.



**HOUSEHOLD DATA**

**Table A-14. Unemployed persons by industry and class of worker, not seasonally adjusted**

Industry and class of worker	Number of unemployed persons (in thousands)		Unemployment rates	
	Apr. 2011	Apr. 2012	Apr. 2011	Apr. 2012
Total, 16 years and over <sup>1</sup> .....	13,237	11,910	8.7	7.7
Nonagricultural private wage and salary workers.....	10,560	9,197	8.9	7.7
Mining, quarrying, and oil and gas extraction.....	28	43	3.5	4.2
Construction.....	1,501	1,156	17.8	14.5
Manufacturing.....	1,444	1,046	9.4	6.9
Durable goods.....	951	620	9.8	6.5
Nondurable goods.....	493	427	8.6	7.4
Wholesale and retail trade.....	1,776	1,603	8.8	7.9
Transportation and utilities.....	500	453	8.4	7.6
Information.....	218	243	7.1	8.3
Financial activities.....	621	505	6.7	5.5
Professional and business services.....	1,340	1,322	9.1	8.5
Education and health services.....	1,088	1,058	5.0	4.8
Leisure and hospitality.....	1,482	1,290	11.7	9.8
Other services.....	564	478	9.2	7.4
Agriculture and related private wage and salary workers.....	182	233	13.7	16.0
Government workers.....	778	786	3.5	3.7
Self-employed workers, unincorporated, and unpaid family workers.....	565	484	5.5	4.9

<sup>1</sup> Persons with no previous work experience and persons whose last job was in the U.S. Armed Forces are included in the unemployed total.

NOTE: Updated population controls are introduced annually with the release of January data.

**HOUSEHOLD DATA**

**Table A-15. Alternative measures of labor underutilization**

[Percent]

Measure	Not seasonally adjusted			Seasonally adjusted					
	Apr. 2011	Mar. 2012	Apr. 2012	Apr. 2011	Dec. 2011	Jan. 2012	Feb. 2012	Mar. 2012	Apr. 2012
U-1 Persons unemployed 15 weeks or longer, as a percent of the civilian labor force.....	5.5	4.9	4.8	5.2	5.0	4.9	4.8	4.6	4.5
U-2 Job losers and persons who completed temporary jobs, as a percent of the civilian labor force.....	5.2	4.8	4.3	5.3	4.9	4.7	4.7	4.5	4.4
U-3 Total unemployed, as a percent of the civilian labor force (official unemployment rate).....	8.7	8.4	7.7	9.0	8.5	8.3	8.3	8.2	8.1
U-4 Total unemployed plus discouraged workers, as a percent of the civilian labor force plus discouraged workers.....	9.2	8.9	8.3	9.6	9.1	8.9	8.9	8.7	8.7
U-5 Total unemployed, plus discouraged workers, plus all other persons marginally attached to the labor force, as a percent of the civilian labor force plus all persons marginally attached to the labor force.....	10.1	9.7	9.1	10.4	10.0	9.9	9.8	9.6	9.5
U-6 Total unemployed, plus all persons marginally attached to the labor force, plus total employed part time for economic reasons, as a percent of the civilian labor force plus all persons marginally attached to the labor force.....	15.5	14.8	14.1	15.9	15.2	15.1	14.9	14.5	14.5

NOTE: Persons marginally attached to the labor force are those who currently are neither working nor looking for work but indicate that they want and are available for a job and have looked for work sometime in the past 12 months. Discouraged workers, a subset of the marginally attached, have given a job-market related reason for not currently looking for work. Persons employed part time for economic reasons are those who want and are available for full-time work but have had to settle for a part-time schedule. Updated population controls are introduced annually with the release of January data.

**HOUSEHOLD DATA**

**Table A-16. Persons not in the labor force and multiple jobholders by sex, not seasonally adjusted**

[Numbers in thousands]

Category	Total		Men		Women	
	Apr. 2011	Apr. 2012	Apr. 2011	Apr. 2012	Apr. 2011	Apr. 2012
<b>NOT IN THE LABOR FORCE</b>						
Total not in the labor force.....	86,248	88,879	34,713	35,452	51,535	53,427
Persons who currently want a job.....	6,482	6,328	3,159	3,141	3,323	3,187
Marginally attached to the labor force <sup>1</sup> .....	2,466	2,363	1,361	1,311	1,105	1,053
Discouraged workers <sup>2</sup> .....	989	968	566	611	423	357
Other persons marginally attached to the labor force <sup>3</sup> .....	1,477	1,395	795	699	682	696
<b>MULTIPLE JOBHOLDERS</b>						
Total multiple jobholders <sup>4</sup> .....	6,887	6,947	3,302	3,501	3,585	3,446
Percent of total employed.....	4.9	4.9	4.5	4.7	5.4	5.1
Primary job full time, secondary job part time.....	3,586	3,549	1,896	2,026	1,691	1,523
Primary and secondary jobs both part time.....	1,831	1,914	618	621	1,213	1,293
Primary and secondary jobs both full time.....	221	289	149	194	72	95
Hours vary on primary or secondary job.....	1,211	1,134	626	634	586	500

1 Data refer to persons who want a job, have searched for work during the prior 12 months, and were available to take a job during the reference week, but had not looked for work in the past 4 weeks.

2 Includes those who did not actively look for work in the prior 4 weeks for reasons such as thinks no work available, could not find work, lacks schooling or training, employer thinks too young or old, and other types of discrimination.

3 Includes those who did not actively look for work in the prior 4 weeks for such reasons as school or family responsibilities, ill health, and transportation problems, as well as a number for whom reason for nonparticipation was not determined.

4 Includes a small number of persons who work part time on their primary job and full time on their secondary job(s), not shown separately.

NOTE: Updated population controls are introduced annually with the release of January data.

**ESTABLISHMENT DATA**

**Table B-1. Employees on nonfarm payrolls by industry sector and selected industry detail**

[In thousands]

Industry	Not seasonally adjusted				Seasonally adjusted				Change from: Mar.2012 - Apr.2012 <sup>P</sup>
	Apr. 2011	Feb. 2012	Mar. 2012 <sup>P</sup>	Apr. 2012 <sup>P</sup>	Apr. 2011	Feb. 2012	Mar. 2012 <sup>P</sup>	Apr. 2012 <sup>P</sup>	
Total nonfarm.....	131,240	131,210	132,071	132,967	131,173	132,720	132,874	132,989	115
Total private.....	108,619	108,887	109,667	110,563	108,989	110,724	110,890	111,020	130
Goods-producing.....	17,755	17,726	17,889	18,100	17,981	18,290	18,328	18,342	14
Mining and logging.....	756	820	822	827	768	837	837	837	0
Logging.....	44.9	47.3	46.1	43.7	49.0	48.1	47.9	47.0	-0.9
Mining.....	710.6	772.4	776.1	783.1	718.9	788.5	788.9	789.5	0.6
Oil and gas extraction.....	168.5	187.5	191.1	191.0	170.0	189.8	192.5	193.3	0.8
Mining, except oil and gas <sup>1</sup> .....	212.6	209.8	211.9	217.5	215.4	221.2	220.7	220.8	0.1
Coal mining.....	85.3	86.0	85.6	85.0	85.8	86.3	85.8	85.4	-0.4
Support activities for mining.....	329.5	375.1	373.1	374.6	333.5	377.5	375.7	375.4	-0.3
Construction.....	5,356	5,133	5,223	5,394	5,495	5,563	5,560	5,558	-2
Construction of buildings.....	1,181.6	1,168.2	1,171.7	1,186.7	1,217.3	1,238.2	1,227.6	1,224.0	-3.6
Residential building.....	544.6	538.4	538.5	545.2	564.9	573.7	568.1	565.6	-2.5
Nonresidential building.....	637.0	629.8	633.2	641.5	652.4	664.5	659.5	658.4	-1.1
Heavy and civil engineering construction.....	810.1	731.7	763.8	818.0	830.1	841.6	845.2	848.5	3.3
Specialty trade contractors.....	3,363.8	3,232.8	3,287.4	3,389.0	3,448.0	3,483.1	3,487.1	3,485.0	-2.1
Residential specialty trade contractors.....	1,401.4	1,345.7	1,372.7	1,425.8	1,439.0	1,461.1	1,465.8	1,472.1	6.3
Nonresidential specialty trade contractors.....	1,962.4	1,887.1	1,914.7	1,963.2	2,009.0	2,022.0	2,021.3	2,012.9	-8.4
Manufacturing.....	11,643	11,773	11,844	11,879	11,718	11,890	11,931	11,947	16
Durable goods.....	7,216	7,372	7,419	7,445	7,245	7,428	7,456	7,471	15
Wood products.....	337.1	324.2	325.9	328.9	339.6	335.2	333.3	332.0	-1.3
Nonmetallic mineral products.....	365.8	353.5	358.6	365.9	367.0	371.7	371.1	370.8	-0.3
Primary metals.....	384.1	402.5	403.9	405.9	385.8	403.8	404.9	405.2	0.3
Fabricated metal products.....	1,327.2	1,375.7	1,383.7	1,390.3	1,337.7	1,385.0	1,390.3	1,396.0	5.7
Machinery.....	1,042.8	1,090.6	1,097.0	1,099.8	1,046.5	1,093.3	1,099.1	1,104.0	4.9
Computer and electronic products <sup>1</sup> .....	1,102.6	1,106.0	1,108.0	1,106.8	1,106.0	1,107.7	1,109.9	1,109.8	-0.1
Computer and peripheral equipment.....	157.1	162.8	163.3	163.7	157.9	162.9	163.3	164.0	0.7
Communications equipment.....	116.8	110.3	110.2	109.1	117.1	110.7	110.7	109.6	-1.1
Semiconductors and electronic components.....	381.2	387.2	387.3	387.4	382.2	387.8	387.4	387.4	0.0
Electronic instruments.....	404.1	401.2	402.2	401.5	405.0	401.2	403.1	403.0	-0.1
Electrical equipment and appliances.....	363.5	370.8	371.8	372.0	365.8	372.5	373.7	373.7	0.0
Transportation equipment <sup>1</sup> .....	1,370.4	1,428.8	1,448.1	1,445.8	1,371.2	1,430.7	1,443.7	1,446.0	2.3
Motor vehicles and parts <sup>2</sup> .....	713.2	751.1	767.2	765.6	712.4	751.0	762.5	763.8	1.3
Furniture and related products.....	351.1	346.0	347.6	352.5	352.9	351.8	352.1	354.6	2.5
Miscellaneous manufacturing.....	571.1	574.0	574.5	576.7	572.5	576.7	577.4	578.7	1.3
Nondurable goods.....	4,427	4,401	4,425	4,434	4,473	4,462	4,475	4,476	1
Food manufacturing.....	1,436.3	1,418.9	1,425.1	1,426.6	1,467.5	1,449.7	1,453.6	1,455.3	1.7
Beverages and tobacco products.....	180.6	187.9	189.7	192.7	185.4	195.2	196.3	197.0	0.7
Textile mills.....	121.2	119.4	120.0	120.0	121.4	120.3	120.2	119.9	-0.3
Textile product mills.....	117.5	112.4	113.1	113.9	118.3	113.8	113.7	113.7	0.0
Apparel.....	152.7	148.5	149.6	151.5	152.9	150.1	150.6	151.3	0.7
Leather and allied products.....	29.0	30.5	30.1	30.1	29.0	30.6	30.1	30.2	0.1
Paper and paper products.....	389.4	389.1	391.9	391.1	391.3	391.4	394.4	393.4	-1.0
Printing and related support activities.....	471.6	454.1	454.4	454.9	474.4	458.6	456.5	456.7	0.2
Petroleum and coal products.....	111.4	110.5	111.0	114.4	112.1	115.3	114.7	115.2	0.5
Chemicals.....	783.9	792.4	797.7	796.2	786.5	795.4	799.0	798.2	-0.8
Plastics and rubber products.....	633.0	637.0	642.8	642.2	634.0	641.9	645.7	644.8	-0.9
Private service-providing.....	90,864	91,161	91,778	92,463	91,008	92,434	92,562	92,678	116
Trade, transportation, and utilities.....	24,782	24,837	24,928	25,048	24,982	25,246	25,230	25,252	22
Wholesale trade.....	5,505.2	5,539.5	5,563.4	5,587.0	5,517.6	5,590.4	5,593.3	5,600.7	7.4
Durable goods.....	2,737.5	2,759.6	2,767.5	2,770.7	2,747.5	2,778.8	2,779.2	2,778.4	-0.8
Nondurable goods.....	1,936.5	1,935.4	1,946.8	1,963.1	1,937.4	1,960.8	1,961.6	1,966.6	5.0
Electronic markets and agents and brokers.....	831.2	844.5	849.1	853.2	832.7	850.8	852.5	855.7	3.2
Retail trade.....	14,476.7	14,441.7	14,488.7	14,586.7	14,630.7	14,741.2	14,720.3	14,749.6	29.3
Motor vehicle and parts dealers <sup>1</sup> .....	1,679.6	1,691.4	1,703.4	1,719.8	1,680.5	1,717.7	1,719.1	1,720.9	1.8
Automobile dealers.....	1,048.0	1,069.8	1,074.5	1,082.5	1,049.7	1,079.9	1,080.1	1,083.1	3.0
Furniture and home furnishings stores.....	433.6	443.5	442.7	441.7	440.4	449.3	449.3	448.8	-0.5

See footnotes at end of table.

**ESTABLISHMENT DATA**

**Table B-1. Employees on nonfarm payrolls by industry sector and selected industry detail**

— Continued

[In thousands]

Industry	Not seasonally adjusted				Seasonally adjusted				Change from: Mar.2012 - Apr.2012 <sup>P</sup>
	Apr. 2011	Feb. 2012	Mar. 2012 <sup>P</sup>	Apr. 2012 <sup>P</sup>	Apr. 2011	Feb. 2012	Mar. 2012 <sup>P</sup>	Apr. 2012 <sup>P</sup>	
<b>Retail trade - Continued</b>									
Electronics and appliance stores.....	526.6	509.8	503.9	502.6	532.8	513.4	509.8	510.2	0.4
Building material and garden supply stores...	1,191.0	1,099.1	1,150.6	1,206.4	1,153.9	1,150.7	1,156.3	1,160.9	4.6
Food and beverage stores.....	2,800.3	2,828.4	2,834.3	2,833.9	2,826.7	2,859.9	2,861.8	2,859.1	-2.7
Health and personal care stores.....	971.4	986.1	987.5	987.5	977.6	992.5	994.6	996.3	1.7
Gasoline stations.....	820.3	814.3	816.6	823.0	826.4	828.1	828.7	828.9	0.2
Clothing and clothing accessories stores.....	1,304.9	1,304.8	1,313.0	1,321.9	1,347.4	1,362.3	1,362.6	1,361.3	-1.3
Sporting goods, hobby, book, and music stores.....	558.9	551.7	547.3	549.9	578.6	563.2	564.7	566.8	2.1
General merchandise stores <sup>1</sup> .....	3,018.0	3,022.2	3,015.5	3,021.7	3,071.1	3,094.6	3,070.5	3,091.9	21.4
Department stores.....	1,499.3	1,521.4	1,503.4	1,497.8	1,542.3	1,558.2	1,543.9	1,550.3	6.4
Miscellaneous store retailers.....	755.0	758.5	748.1	755.4	766.2	770.3	766.4	767.8	1.4
Nonstore retailers.....	417.1	431.9	425.8	422.9	429.1	439.2	436.5	436.7	0.2
Transportation and warehousing.....	4,247.8	4,298.0	4,315.9	4,311.8	4,279.5	4,353.2	4,355.0	4,338.4	-16.6
Air transportation.....	453.0	454.8	456.5	457.1	454.9	456.7	457.7	459.0	1.3
Rail transportation.....	227.0	230.6	232.5	233.7	227.4	232.3	233.6	233.9	0.3
Water transportation.....	61.0	65.4	65.6	65.6	62.4	67.0	67.2	66.5	-0.7
Truck transportation.....	1,277.0	1,299.8	1,307.4	1,316.9	1,295.3	1,334.5	1,332.0	1,333.8	1.8
Transit and ground passenger transportation.....	452.6	446.8	444.4	433.2	438.0	435.6	430.2	419.2	-11.0
Pipeline transportation.....	42.8	43.7	43.7	43.6	42.8	43.8	43.8	43.9	0.1
Scenic and sightseeing transportation.....	23.7	24.0	24.9	27.4	26.6	32.0	31.4	31.2	-0.2
Support activities for transportation.....	561.5	573.0	578.4	580.6	562.7	577.6	582.3	580.7	-1.6
Couriers and messengers.....	511.4	517.7	519.2	510.8	525.2	524.5	528.7	521.3	-7.4
Warehousing and storage.....	637.8	642.2	643.3	642.9	644.2	649.2	648.1	648.9	0.8
Utilities.....	552.4	558.0	560.2	562.8	554.3	560.7	561.8	563.2	1.4
Information.....	2,669	2,635	2,625	2,625	2,671	2,636	2,630	2,628	-2
Publishing industries, except Internet.....	748.6	739.4	738.8	737.9	750.3	741.0	740.8	740.2	-0.6
Motion picture and sound recording industries.....	361.4	367.4	356.6	364.7	358.8	365.9	360.2	364.2	4.0
Broadcasting, except Internet.....	281.0	278.5	282.2	281.4	282.6	279.3	282.4	281.6	-0.8
Telecommunications.....	878.5	844.4	837.9	832.0	882.0	841.6	837.2	833.7	-3.5
Data processing, hosting and related services.....	245.9	240.4	242.4	243.0	242.9	241.4	241.8	241.3	-0.5
Other information services.....	154.0	165.3	166.7	165.8	154.2	166.6	167.8	166.6	-1.2
Financial activities.....	7,648	7,653	7,682	7,691	7,679	7,704	7,718	7,719	1
Finance and insurance.....	5,736.1	5,748.0	5,764.2	5,755.5	5,749.2	5,757.9	5,766.4	5,766.8	0.4
Monetary authorities - central bank.....	18.6	18.8	18.8	18.9	18.6	18.9	18.9	19.0	0.1
Credit intermediation and related activities <sup>1</sup> .....	2,547.0	2,574.1	2,587.0	2,577.4	2,554.4	2,575.5	2,585.1	2,581.9	-3.2
Depository credit intermediation <sup>1</sup> .....	1,730.3	1,745.3	1,753.2	1,748.0	1,735.6	1,749.3	1,754.8	1,751.7	-3.1
Commercial banking.....	1,309.2	1,319.4	1,326.6	1,320.6	1,312.2	1,322.2	1,327.2	1,323.7	-3.5
Securities, commodity contracts, investments.....	805.3	800.4	800.1	798.5	807.7	801.9	800.6	800.1	-0.5
Insurance carriers and related activities.....	2,279.1	2,270.6	2,273.7	2,276.4	2,282.4	2,277.2	2,277.0	2,280.8	3.8
Funds, trusts, and other financial vehicles.....	86.1	84.1	84.6	84.3	86.1	84.4	84.8	85.0	0.2
Real estate and rental and leasing.....	1,911.5	1,904.9	1,917.4	1,935.9	1,929.4	1,946.2	1,951.5	1,951.8	0.3
Real estate.....	1,392.2	1,388.0	1,394.1	1,408.5	1,402.4	1,413.2	1,416.0	1,416.5	0.5
Rental and leasing services.....	495.3	493.2	499.8	504.0	503.0	509.2	511.8	511.8	0.0
Lessors of nonfinancial intangible assets.....	24.0	23.7	23.5	23.4	24.0	23.8	23.7	23.5	-0.2
Professional and business services.....	17,236	17,483	17,602	17,818	17,242	17,761	17,798	17,860	62
Professional and technical services <sup>1</sup> .....	7,709.1	7,960.0	7,965.4	7,995.7	7,636.1	7,880.7	7,902.0	7,929.5	27.5
Legal services.....	1,108.5	1,111.8	1,111.7	1,116.5	1,114.0	1,118.7	1,117.0	1,120.9	3.9
Accounting and bookkeeping services.....	1,006.0	1,109.9	1,091.8	1,073.7	905.0	971.0	974.2	974.4	0.2
Architectural and engineering services.....	1,281.7	1,295.3	1,300.1	1,313.9	1,290.4	1,315.2	1,318.8	1,326.2	7.4
Computer systems design and related services.....	1,514.8	1,568.0	1,569.4	1,584.0	1,516.9	1,571.7	1,577.9	1,585.3	7.4
Management and technical consulting services.....	1,053.5	1,105.5	1,110.5	1,121.5	1,060.2	1,114.9	1,120.6	1,127.0	6.4
Management of companies and enterprises.....	1,898.0	1,925.2	1,934.4	1,932.7	1,906.8	1,936.0	1,940.3	1,942.3	2.0
Administrative and waste services.....	7,629.1	7,598.2	7,702.0	7,889.1	7,699.2	7,944.4	7,955.9	7,988.2	32.3

See footnotes at end of table.

**ESTABLISHMENT DATA**

**Table B-1. Employees on nonfarm payrolls by industry sector and selected industry detail**

— Continued

[In thousands]

Industry	Not seasonally adjusted				Seasonally adjusted				Change from: Mar.2012 - Apr.2012 <sup>p</sup>
	Apr. 2011	Feb. 2012	Mar. 2012 <sup>p</sup>	Apr. 2012 <sup>p</sup>	Apr. 2011	Feb. 2012	Mar. 2012 <sup>p</sup>	Apr. 2012 <sup>p</sup>	
Administrative and waste services - Continued									
Administrative and support services <sup>1</sup> .....	7,270.0	7,234.7	7,338.7	7,520.4	7,335.7	7,572.5	7,584.3	7,616.0	31.7
Employment services <sup>1</sup> .....	2,874.2	2,998.4	3,030.0	3,085.9	2,931.4	3,148.4	3,137.1	3,164.9	27.8
Temporary help services .....	2,246.1	2,357.1	2,382.5	2,430.4	2,294.2	2,482.3	2,472.9	2,494.0	21.1
Business support services .....	808.7	820.3	815.9	811.6	811.7	816.9	813.4	815.2	1.8
Services to buildings and dwellings .....	1,777.1	1,616.1	1,675.2	1,799.3	1,776.3	1,783.4	1,803.5	1,805.5	2.0
Waste management and remediation services .....	359.1	363.5	363.3	368.7	363.5	371.9	371.6	372.2	0.6
Education and health services .....	19,974	20,304	20,375	20,411	19,804	20,181	20,226	20,249	23
Educational services .....	3,398.4	3,455.8	3,478.7	3,486.5	3,233.2	3,301.4	3,319.1	3,323.4	4.3
Health care and social assistance .....	16,576.0	16,847.8	16,896.0	16,924.5	16,571.0	16,880.0	16,906.8	16,925.2	18.4
Health care <sup>3</sup> .....	13,963.9	14,215.8	14,254.5	14,276.7	13,985.4	14,257.4	14,282.7	14,301.7	19.0
Ambulatory health care services <sup>1</sup> .....	6,099.4	6,255.1	6,268.4	6,289.9	6,104.3	6,273.6	6,283.3	6,298.7	15.4
Offices of physicians .....	2,332.5	2,395.4	2,401.1	2,403.4	2,338.7	2,400.7	2,405.8	2,411.3	5.5
Outpatient care centers .....	619.4	646.8	648.2	649.6	618.3	646.2	647.7	648.4	0.7
Home health care services .....	1,131.5	1,164.3	1,170.6	1,180.4	1,129.1	1,168.8	1,173.3	1,179.6	6.3
Hospitals .....	4,707.8	4,792.0	4,803.1	4,800.4	4,717.6	4,799.9	4,808.6	4,812.7	4.1
Nursing and residential care facilities <sup>1</sup> .....	3,156.7	3,168.7	3,183.0	3,186.4	3,163.5	3,183.9	3,190.8	3,190.3	-0.5
Nursing care facilities .....	1,665.3	1,651.4	1,660.3	1,657.8	1,668.9	1,660.3	1,665.0	1,661.0	-4.0
Social assistance <sup>1</sup> .....	2,612.1	2,632.0	2,641.5	2,647.8	2,585.6	2,622.6	2,624.1	2,623.5	-0.6
Child day care services .....	870.4	852.9	855.8	859.2	847.8	839.4	837.0	836.0	-1.0
Leisure and hospitality .....	13,224	12,943	13,230	13,515	13,295	13,548	13,600	13,612	12
Arts, entertainment, and recreation .....	1,877.2	1,721.6	1,794.8	1,874.8	1,916.1	1,929.2	1,942.7	1,927.6	-15.1
Performing arts and spectator sports .....	403.4	368.5	389.3	408.8	398.4	401.1	411.3	404.5	-6.8
Museums, historical sites, and similar institutions .....	131.4	122.7	127.5	131.9	132.8	135.0	135.6	135.0	-0.6
Amusements, gambling, and recreation .....	1,342.4	1,230.4	1,278.0	1,334.1	1,384.9	1,393.1	1,395.8	1,388.1	-7.7
Accommodation and food services .....	11,347.1	11,221.2	11,434.8	11,639.9	11,378.9	11,618.8	11,657.7	11,684.4	26.7
Accommodation .....	1,746.7	1,715.3	1,741.8	1,766.2	1,791.4	1,807.0	1,810.4	1,817.4	7.0
Food services and drinking places .....	9,600.4	9,505.9	9,693.0	9,873.7	9,587.5	9,811.8	9,847.3	9,867.0	19.7
Other services .....	5,331	5,306	5,336	5,355	5,335	5,358	5,360	5,358	-2
Repair and maintenance .....	1,161.2	1,150.2	1,155.5	1,159.4	1,156.2	1,159.9	1,157.9	1,155.7	-2.2
Personal and laundry services .....	1,283.8	1,275.8	1,287.8	1,297.6	1,281.0	1,291.8	1,294.1	1,293.7	-0.4
Membership associations and organizations .....	2,885.6	2,880.0	2,892.3	2,897.9	2,898.0	2,906.3	2,907.6	2,908.7	1.1
Government .....	22,621	22,323	22,404	22,404	22,184	21,996	21,984	21,969	-15
Federal .....	2,873.0	2,803.0	2,811.0	2,821.0	2,873.0	2,828.0	2,825.0	2,821.0	-4.0
Federal, except U.S. Postal Service .....	2,231.5	2,188.4	2,197.5	2,199.1	2,234.0	2,208.0	2,207.2	2,202.4	-4.8
U.S. Postal Service .....	641.7	614.9	613.8	622.1	639.1	620.0	618.0	618.8	0.8
State government .....	5,241.0	5,191.0	5,211.0	5,212.0	5,098.0	5,067.0	5,070.0	5,071.0	1.0
State government education .....	2,528.1	2,544.1	2,562.4	2,564.3	2,382.5	2,409.6	2,414.4	2,419.9	5.5
State government, excluding education .....	2,712.8	2,646.9	2,649.0	2,647.4	2,715.9	2,657.3	2,655.8	2,650.7	-5.1
Local government .....	14,507.0	14,329.0	14,382.0	14,371.0	14,213.0	14,101.0	14,089.0	14,077.0	-12.0
Local government education .....	8,299.0	8,194.6	8,230.0	8,200.2	7,930.5	7,854.5	7,842.6	7,831.9	-10.7
Local government, excluding education .....	6,208.2	6,134.2	6,151.6	6,171.1	6,282.8	6,246.4	6,246.4	6,244.7	-1.7

1 Includes other industries, not shown separately.

2 Includes motor vehicles, motor vehicle bodies and trailers, and motor vehicle parts.

3 Includes ambulatory health care services, hospitals, and nursing and residential care facilities.

p Preliminary

**ESTABLISHMENT DATA**

**Table B-2. Average weekly hours and overtime of all employees on private nonfarm payrolls by industry sector, seasonally adjusted**

Industry	Apr. 2011	Feb. 2012	Mar. 2012 <sup>p</sup>	Apr. 2012 <sup>p</sup>
<b>AVERAGE WEEKLY HOURS</b>				
Total private.....	34.4	34.6	34.5	34.5
Goods-producing.....	39.8	40.5	40.2	40.4
Mining and logging.....	44.4	44.7	44.3	44.6
Construction.....	37.8	38.9	38.6	38.8
Manufacturing.....	40.4	40.9	40.7	40.8
Durable goods.....	40.8	41.4	41.1	41.2
Nondurable goods.....	39.8	40.2	40.1	40.2
Private service-providing.....	33.3	33.4	33.4	33.3
Trade, transportation, and utilities.....	34.7	34.8	34.7	34.7
Wholesale trade.....	38.6	38.8	38.7	38.7
Retail trade.....	31.7	32.0	31.9	31.8
Transportation and warehousing.....	38.8	38.3	38.2	38.3
Utilities.....	42.0	41.3	41.3	41.7
Information.....	36.6	36.7	36.7	36.7
Financial activities.....	37.2	37.3	37.3	37.3
Professional and business services.....	35.7	35.9	35.9	35.9
Education and health services.....	32.9	32.9	32.9	32.8
Leisure and hospitality.....	25.9	26.1	26.1	26.1
Other services.....	31.9	31.7	31.7	31.7
<b>AVERAGE OVERTIME HOURS</b>				
Manufacturing.....	3.2	3.3	3.3	3.4
Durable goods.....	3.1	3.3	3.3	3.4
Nondurable goods.....	3.3	3.3	3.3	3.3

p Preliminary

**ESTABLISHMENT DATA**

**Table B-3. Average hourly and weekly earnings of all employees on private nonfarm payrolls by industry sector, seasonally adjusted**

Industry	Average hourly earnings				Average weekly earnings			
	Apr. 2011	Feb. 2012	Mar. 2012 <sup>p</sup>	Apr. 2012 <sup>p</sup>	Apr. 2011	Feb. 2012	Mar. 2012 <sup>p</sup>	Apr. 2012 <sup>p</sup>
Total private.....	\$22.97	\$23.33	\$23.37	\$23.38	\$ 790.17	\$ 807.22	\$ 806.27	\$ 806.61
Goods-producing.....	24.35	24.62	24.66	24.69	969.13	997.11	991.33	997.48
Mining and logging.....	28.40	28.55	28.79	28.65	1,260.96	1,276.19	1,275.40	1,277.79
Construction.....	25.38	25.55	25.63	25.65	959.36	993.90	989.32	995.22
Manufacturing.....	23.61	23.91	23.92	23.96	953.84	977.92	973.54	977.57
Durable goods.....	25.11	25.31	25.31	25.34	1,024.49	1,047.83	1,040.24	1,044.01
Nondurable goods.....	21.11	21.50	21.54	21.59	840.18	864.30	863.75	867.92
Private service-providing.....	22.64	23.03	23.07	23.07	753.91	769.20	770.54	768.23
Trade, transportation, and utilities.....	19.95	20.21	20.29	20.33	692.27	703.31	704.06	705.45
Wholesale trade.....	26.30	26.52	26.67	26.66	1,015.18	1,028.98	1,032.13	1,031.74
Retail trade.....	15.79	16.06	16.09	16.12	500.54	513.92	513.27	512.62
Transportation and warehousing.....	21.49	21.92	21.97	22.07	833.81	839.54	839.25	845.28
Utilities.....	33.86	33.42	33.68	33.83	1,422.12	1,380.25	1,390.98	1,410.71
Information.....	31.59	31.60	31.59	31.57	1,156.19	1,159.72	1,159.35	1,158.62
Financial activities.....	27.72	28.66	28.80	28.79	1,031.18	1,069.02	1,074.24	1,073.87
Professional and business services.....	27.60	27.89	28.00	27.93	985.32	1,001.25	1,005.20	1,002.69
Education and health services.....	23.54	24.18	24.10	24.09	774.47	795.52	792.89	790.15
Leisure and hospitality.....	13.21	13.30	13.34	13.37	342.14	347.13	348.17	348.96
Other services.....	20.34	20.63	20.55	20.57	648.85	653.97	651.44	652.07

p Preliminary



**ESTABLISHMENT DATA**

**Table B-4. Indexes of aggregate weekly hours and payrolls for all employees on private nonfarm payrolls by industry sector, seasonally adjusted**

[2007=100]

Industry	Index of aggregate weekly hours <sup>1</sup>					Index of aggregate weekly payrolls <sup>2</sup>				
	Apr. 2011	Feb. 2012	Mar. 2012 <sup>p</sup>	Apr. 2012 <sup>p</sup>	Percent change from: Mar. 2012 - Apr. 2012 <sup>p</sup>	Apr. 2011	Feb. 2012	Mar. 2012 <sup>p</sup>	Apr. 2012 <sup>p</sup>	Percent change from: Mar. 2012 - Apr. 2012 <sup>p</sup>
Total private.....	94.0	96.0	95.9	96.0	0.1	102.9	106.8	106.8	107.0	0.2
Goods-producing.....	81.5	84.4	83.9	84.4	0.6	89.7	93.9	93.6	94.2	0.6
Mining and logging.....	107.1	117.6	116.5	117.3	0.7	122.2	134.8	134.7	134.9	0.1
Construction.....	71.6	74.6	74.0	74.3	0.4	79.0	82.8	82.4	82.8	0.5
Manufacturing.....	85.2	87.5	87.4	87.7	0.3	93.5	97.3	97.2	97.7	0.5
Durable goods.....	83.2	86.6	86.3	86.7	0.5	92.8	97.3	97.0	97.5	0.5
Nondurable goods.....	88.9	89.5	89.6	89.8	0.2	95.2	97.7	97.9	98.4	0.5
Private service-providing.....	97.3	99.2	99.3	99.1	-0.2	106.8	110.6	111.0	110.8	-0.2
Trade, transportation, and utilities.....	94.3	95.6	95.2	95.3	0.1	101.2	103.9	104.0	104.3	0.3
Wholesale trade.....	92.9	94.6	94.4	94.6	0.2	102.0	104.7	105.1	105.2	0.1
Retail trade.....	94.2	95.8	95.4	95.3	-0.1	98.3	101.7	101.5	101.5	0.0
Transportation and warehousing.....	95.0	95.4	95.2	95.1	-0.1	103.6	106.1	106.2	106.5	0.3
Utilities.....	100.7	100.2	100.4	101.6	1.2	112.7	110.6	111.7	113.6	1.7
Information.....	89.3	88.4	88.1	88.1	0.0	100.4	99.4	99.1	99.0	-0.1
Financial activities.....	94.1	94.7	94.9	94.9	0.0	101.8	105.9	106.6	106.6	0.0
Professional and business services.....	96.8	100.3	100.5	100.8	0.3	108.3	113.3	114.0	114.1	0.1
Education and health services.....	106.1	108.1	108.3	108.1	-0.2	117.0	122.4	122.3	122.0	-0.2
Leisure and hospitality.....	98.2	100.9	101.3	101.4	0.1	104.7	108.3	109.0	109.3	0.3
Other services.....	94.3	94.1	94.1	94.1	0.0	108.8	110.2	109.8	109.9	0.1

1 The indexes of aggregate weekly hours are calculated by dividing the current month's estimates of aggregate hours by the corresponding 2007 annual average aggregate hours. Aggregate hours estimates are the product of estimates of average weekly hours and employment.

2 The indexes of aggregate weekly payrolls are calculated by dividing the current month's estimates of aggregate weekly payrolls by the corresponding 2007 annual average aggregate weekly payrolls. Aggregate payrolls estimates are the product of estimates of average hourly earnings, average weekly hours, and employment.

p Preliminary

**ESTABLISHMENT DATA**

**Table B-5. Employment of women on nonfarm payrolls by industry sector, seasonally adjusted**

Industry	Women employees (in thousands)				Percent of all employees			
	Apr. 2011	Feb. 2012	Mar. 2012 <sup>P</sup>	Apr. 2012 <sup>P</sup>	Apr. 2011	Feb. 2012	Mar. 2012 <sup>P</sup>	Apr. 2012 <sup>P</sup>
Total nonfarm.....	64,955	65,411	65,471	65,555	49.5	49.3	49.3	49.3
Total private.....	52,349	52,901	52,966	53,046	48.0	47.8	47.8	47.8
Goods-producing.....	4,068	4,066	4,078	4,094	22.6	22.2	22.3	22.3
Mining and logging.....	104	111	112	114	13.5	13.3	13.4	13.6
Construction.....	709	707	707	708	12.9	12.7	12.7	12.7
Manufacturing.....	3,255	3,248	3,259	3,272	27.8	27.3	27.3	27.4
Durable goods.....	1,719	1,724	1,730	1,737	23.7	23.2	23.2	23.2
Nondurable goods.....	1,536	1,524	1,529	1,535	34.3	34.2	34.2	34.3
Private service-providing.....	48,281	48,835	48,888	48,952	53.1	52.8	52.8	52.8
Trade, transportation, and utilities.....	10,058	10,040	10,023	10,024	40.3	39.8	39.7	39.7
Wholesale trade.....	1,658.8	1,680.5	1,681.7	1,684.6	30.1	30.1	30.1	30.1
Retail trade.....	7,255.5	7,211.8	7,193.5	7,193.9	49.6	48.9	48.9	48.8
Transportation and warehousing.....	1,007.8	1,008.8	1,008.6	1,004.9	23.5	23.2	23.2	23.2
Utilities.....	135.5	139.2	139.3	140.6	24.4	24.8	24.8	25.0
Information.....	1,085	1,066	1,063	1,064	40.6	40.4	40.4	40.5
Financial activities.....	4,487	4,479	4,486	4,477	58.4	58.1	58.1	58.0
Professional and business services.....	7,662	7,861	7,883	7,913	44.4	44.3	44.3	44.3
Education and health services.....	15,233	15,489	15,511	15,533	76.9	76.8	76.7	76.7
Leisure and hospitality.....	6,947	7,074	7,099	7,114	52.3	52.2	52.2	52.3
Other services.....	2,809	2,826	2,823	2,827	52.7	52.7	52.7	52.8
Government.....	12,606	12,510	12,505	12,509	56.8	56.9	56.9	56.9

p Preliminary

NOTE: Data published in this release for women employees in the Government and Total nonfarm industries are erroneous. Additional information is

available at [www.bls.gov/bls/ceswomen\\_usps.htm](http://www.bls.gov/bls/ceswomen_usps.htm).

**ESTABLISHMENT DATA**

**Table B-6. Employment of production and nonsupervisory employees on private nonfarm payrolls by industry sector, seasonally adjusted<sup>1</sup>**

[In thousands]

Industry	Apr. 2011	Feb. 2012	Mar. 2012 <sup>p</sup>	Apr. 2012 <sup>p</sup>
Total private.....	89,850	91,504	91,612	91,740
Goods-producing.....	12,961	13,219	13,254	13,268
Mining and logging.....	578	638	633	635
Construction.....	4,158	4,204	4,211	4,206
Manufacturing.....	8,225	8,377	8,410	8,427
Durable goods.....	4,966	5,123	5,146	5,166
Nondurable goods.....	3,259	3,254	3,264	3,261
Private service-providing.....	76,889	78,285	78,358	78,472
Trade, transportation, and utilities.....	21,164	21,419	21,411	21,433
Wholesale trade.....	4,419.2	4,497.6	4,501.4	4,508.8
Retail trade.....	12,615.2	12,725.9	12,703.1	12,730.3
Transportation and warehousing.....	3,687.0	3,748.7	3,758.4	3,745.9
Utilities.....	442.8	447.0	447.6	448.4
Information.....	2,146	2,123	2,118	2,118
Financial activities.....	5,889	5,914	5,920	5,919
Professional and business services.....	14,162	14,660	14,677	14,731
Education and health services.....	17,351	17,709	17,733	17,756
Leisure and hospitality.....	11,710	11,972	12,011	12,032
Other services.....	4,467	4,488	4,488	4,483

<sup>1</sup> Data relate to production employees in mining and logging and manufacturing, construction employees in construction, and nonsupervisory employees in the service-providing industries. These groups account for approximately four-fifths of the total employment on private nonfarm payrolls.

<sup>p</sup> Preliminary

**ESTABLISHMENT DATA**

**Table B-7. Average weekly hours and overtime of production and nonsupervisory employees on private nonfarm payrolls by industry sector, seasonally adjusted<sup>1</sup>**

Industry	Apr. 2011	Feb. 2012	Mar. 2012 <sup>p</sup>	Apr. 2012 <sup>p</sup>
<b>AVERAGE WEEKLY HOURS</b>				
Total private.....	33.7	33.8	33.8	33.8
Goods-producing.....	40.8	41.3	41.2	41.3
Mining and logging.....	46.6	47.6	47.4	48.4
Construction.....	38.8	39.3	39.3	39.4
Manufacturing.....	41.4	41.9	41.7	41.8
Durable goods.....	41.8	42.3	42.1	42.2
Nondurable goods.....	40.9	41.1	41.0	41.0
Private service-providing.....	32.5	32.5	32.5	32.5
Trade, transportation, and utilities.....	33.8	33.9	33.8	33.8
Wholesale trade.....	38.5	38.9	38.7	38.7
Retail trade.....	30.6	30.7	30.7	30.7
Transportation and warehousing.....	38.0	37.8	37.7	37.8
Utilities.....	42.7	40.7	40.5	40.9
Information.....	36.5	36.0	36.0	35.9
Financial activities.....	36.3	36.6	36.7	36.6
Professional and business services.....	35.3	35.3	35.2	35.3
Education and health services.....	32.3	32.4	32.4	32.3
Leisure and hospitality.....	24.8	24.9	25.0	24.9
Other services.....	30.8	30.6	30.7	30.7
<b>AVERAGE OVERTIME HOURS</b>				
Manufacturing.....	4.1	4.2	4.2	4.2
Durable goods.....	4.2	4.4	4.4	4.4
Nondurable goods.....	4.0	4.0	4.0	3.9

<sup>1</sup> Data relate to production employees in mining and logging and manufacturing, construction employees in construction, and nonsupervisory employees in the service-providing industries. These groups account for approximately four-fifths of the total employment on private nonfarm payrolls.

p Preliminary

**ESTABLISHMENT DATA**

**Table B-8. Average hourly and weekly earnings of production and nonsupervisory employees on private nonfarm payrolls by industry sector, seasonally adjusted<sup>1</sup>**

Industry	Average hourly earnings				Average weekly earnings			
	Apr. 2011	Feb. 2012	Mar. 2012 <sup>p</sup>	Apr. 2012 <sup>p</sup>	Apr. 2011	Feb. 2012	Mar. 2012 <sup>p</sup>	Apr. 2012 <sup>p</sup>
Total private.....	\$19.39	\$19.65	\$19.69	\$19.72	\$ 653.44	\$ 664.17	\$ 665.52	\$ 666.54
Goods-producing.....	20.59	20.84	20.90	20.94	840.07	860.69	861.08	864.82
Mining and logging.....	24.04	25.46	25.61	25.45	1,120.26	1,211.90	1,213.91	1,231.78
Construction.....	23.57	23.82	23.93	23.91	914.52	936.13	940.45	942.05
Manufacturing.....	18.90	19.04	19.06	19.15	782.46	797.78	794.80	800.47
Durable goods.....	20.11	20.16	20.16	20.23	840.60	852.77	848.74	853.71
Nondurable goods.....	17.02	17.23	17.28	17.39	696.12	708.15	708.48	712.99
Private service-providing.....	19.14	19.39	19.43	19.46	622.05	630.18	631.48	632.45
Trade, transportation, and utilities.....	17.10	17.32	17.37	17.39	577.98	587.15	587.11	587.78
Wholesale trade.....	21.93	22.01	22.11	22.14	844.31	856.19	855.66	856.82
Retail trade.....	13.46	13.74	13.78	13.75	411.88	421.82	423.05	422.13
Transportation and warehousing.....	19.39	19.63	19.69	19.75	736.82	742.01	742.31	746.55
Utilities.....	31.12	31.01	31.09	31.39	1,328.82	1,262.11	1,259.15	1,283.85
Information.....	26.72	26.71	26.80	26.80	975.28	961.56	964.80	962.12
Financial activities.....	21.86	22.43	22.47	22.56	793.52	820.94	824.65	825.70
Professional and business services.....	23.08	23.13	23.24	23.26	814.72	816.49	818.05	821.08
Education and health services.....	20.59	21.03	21.03	21.05	665.06	681.37	681.37	679.92
Leisure and hospitality.....	11.42	11.58	11.61	11.66	283.22	288.34	290.25	290.33
Other services.....	17.27	17.44	17.36	17.37	531.92	533.66	532.95	533.26

<sup>1</sup> Data relate to production employees in mining and logging and manufacturing, construction employees in construction, and nonsupervisory employees in the service-providing industries. These groups account for approximately four-fifths of the total employment on private nonfarm payrolls.

p Preliminary

**ESTABLISHMENT DATA**

**Table B-9. Indexes of aggregate weekly hours and payrolls for production and nonsupervisory employees on private nonfarm payrolls by industry sector, seasonally adjusted<sup>1</sup>**

[2002=100]

Industry	Index of aggregate weekly hours <sup>2</sup>					Index of aggregate weekly payrolls <sup>3</sup>				
	Apr. 2011	Feb. 2012	Mar. 2012 <sup>p</sup>	Apr. 2012 <sup>p</sup>	Percent change from: Mar. 2012 - Apr. 2012 <sup>p</sup>	Apr. 2011	Feb. 2012	Mar. 2012 <sup>p</sup>	Apr. 2012 <sup>p</sup>	Percent change from: Mar. 2012 - Apr. 2012 <sup>p</sup>
Total private.....	101.2	103.3	103.5	103.6	0.1	131.1	135.7	136.1	136.5	0.3
Goods-producing.....	80.8	83.4	83.4	83.7	0.4	101.9	106.5	106.8	107.4	0.6
Mining and logging.....	143.1	161.4	159.4	163.3	2.4	200.1	239.0	237.5	241.7	1.8
Construction.....	80.8	82.7	82.9	83.0	0.1	102.8	106.4	107.1	107.1	0.0
Manufacturing.....	78.2	80.6	80.5	80.9	0.5	96.6	100.3	100.3	101.3	1.0
Durable goods.....	78.0	81.4	81.4	81.9	0.6	97.9	102.5	102.5	103.5	1.0
Nondurable goods.....	78.5	78.8	78.8	78.8	0.0	94.5	95.9	96.3	96.8	0.5
Private service-providing.....	106.8	108.8	108.9	109.0	0.1	140.2	144.6	145.1	145.5	0.3
Trade, transportation, and utilities.....	99.7	101.2	100.9	101.0	0.1	121.6	125.1	125.0	125.3	0.2
Wholesale trade.....	100.2	103.0	102.6	102.8	0.2	129.4	133.6	133.6	134.0	0.3
Retail trade.....	97.7	98.9	98.7	98.9	0.2	112.7	116.5	116.6	116.6	0.0
Transportation and warehousing.....	105.5	106.7	106.7	106.6	-0.1	129.7	132.8	133.2	133.5	0.2
Utilities.....	96.7	93.0	92.7	93.8	1.2	125.6	120.4	120.3	122.9	2.2
Information.....	89.4	87.2	87.0	86.8	-0.2	118.3	115.3	115.5	115.1	-0.3
Financial activities.....	102.3	103.6	104.0	103.7	-0.3	138.3	143.6	144.4	144.6	0.1
Professional and business services.....	112.0	116.0	115.8	116.5	0.6	153.9	159.6	160.1	161.3	0.7
Education and health services.....	120.9	123.8	123.9	123.7	-0.2	163.6	171.1	171.3	171.2	-0.1
Leisure and hospitality.....	106.4	109.2	110.0	109.7	-0.3	138.0	143.6	145.0	145.3	0.2
Other services.....	96.5	96.3	96.6	96.5	-0.1	121.4	122.4	122.2	122.2	0.0

1 Data relate to production employees in mining and logging and manufacturing, construction employees in construction, and nonsupervisory employees in the service-providing industries. These groups account for approximately four-fifths of the total employment on private nonfarm payrolls.

2 The indexes of aggregate weekly hours are calculated by dividing the current month's estimates of aggregate hours by the corresponding 2002 annual average aggregate hours. Aggregate hours estimates are the product of estimates of average weekly hours and employment.

3 The indexes of aggregate weekly payrolls are calculated by dividing the current month's estimates of aggregate weekly payrolls by the corresponding 2002 annual average aggregate weekly payrolls. Aggregate payrolls estimates are the product of estimates of average hourly earnings, average weekly hours, and employment.

p Preliminary