

Calendar of Releases

Titles for the current week are links to their respective releases.

MONDAY*	TUESDAY	WEDNESDAY	THURSDAY*	FRIDAY
September 22 Existing Home Sales (Aug) A: 5.05M PF: 5.20M	September 23	September 24 New Home Sales (Aug) A: 504K PF: 430K	September 25 Initial Claims (9/20) A: 293K PF: 300K Durable Goods (Aug) A: -18.2% PF: -17.9%	September 26 GDP (Q2) A: N/A PF: 4.6% Corporate Profits (Q2)
September 29 Personal Income (Aug) CF: N/A PF: 0.4% Consumption (Aug) CF: N/A PF: 0.4% Core PCE (Aug) CF: N/A PF: 0.0%	September 30	October 1 Construct Spending (Aug) CF: N/A PF: 0.3% ISM Index (Sep) CF: N/A PF: 58.3 Latest Issue <i>National Economic Trends</i>	October 2 Initial Claims (9/27) CF: N/A PF: N/A Factory Orders (Aug) CF: N/A PF: -7.3%	October 3 Nonfarm Payrolls (Sep) CF: N/A PF: 203K Private Payrolls (Sep) CF: N/A PF: 195K Unemployment Rate (Sep) CF: N/A PF: 6.1% ISM Non Mfg Index (Sep) CF: N/A PF: 58.5 International Trade (Aug) CF: N/A PF: -\$40.7B
October 6 Latest Issue <i>Monetary Trends</i>	October 7 Consumer Credit (Aug) CF: N/A	October 8 FOMC Minutes (previous meeting)	October 9 Initial Claims (10/4) CF: N/A	October 10 Import Prices (Sep) CF: N/A Treasury Budget (Sep) CF: N/A

DEFINITIONS: A, actual value; PF, previous week's forecast; CF, current week's forecast; K, thousand; M, million; B, billion.

*The Board of Governors of the Federal Reserve System provides H.3, H.4.1, and H.6 releases each Thursday and H.10 and H.15 releases each Monday.

Forecast data are from Thomson Reuters. ©Thomson Reuters, 2012. All Rights Reserved. Use, duplication, or sale of this service or the data contained herein, except as described in the Federal Reserve Bank of St. Louis Subscription Agreement, is strictly prohibited.

Contents

Page

3	Adjusted Monetary Base
4	Adjusted Reserves
5	MZM
6	M2
7	Composition of Federal Reserve Assets and Liabilities
8	Reserve Bank Credit and Selected Categories
9	Reverse Repurchase Agreements and Federal Reserve Remittances
10	Other Federal Reserve Balance Sheet Items
11	Yields on Selected Securities
12	Corporate Bond Spreads and Mortgage Interest Rates
13	Yields on Nominal and Inflation-Indexed Treasury Securities
14	Federal Funds Futures Market
15	Equity Price Indices
16	Crude Oil Prices
17	Natural Gas Prices
18	Exchange Rates
19	Currency, Savings, and Small Time Deposits
20	Institutional and Retail Money Funds, and Borrowings from Federal Reserve Banks
21	Bank Loans
22	Commercial Paper Outstanding
23	Reference Tables
24	Notes

Conventions used in this publication:

1. Unless otherwise indicated, figure and table data are weekly and seasonally adjusted.
2. For pages 11, 15, 16 (top chart), 17 (top chart), and 23 (top table), the last observation is a daily average that incorporates all available data at the time of publication, which usually includes observations for the first three trading days of the week (Monday through Wednesday). The previous observations signify that week's average.

We welcome your comments addressed to:

Editor, *U.S. Financial Data*
Research Division
Federal Reserve Bank of St. Louis
P.O. Box 442
St. Louis, MO 63166-0442

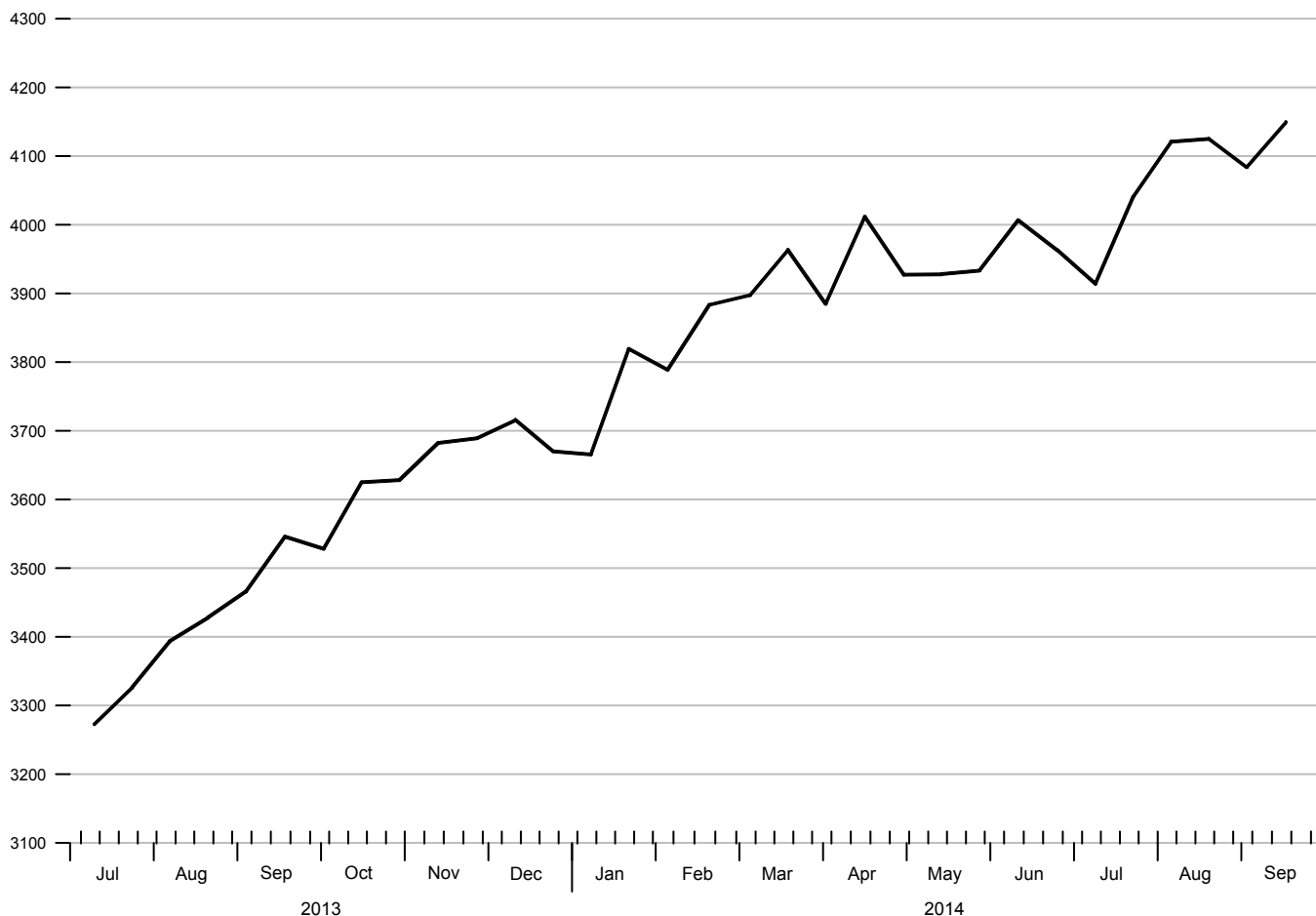
or to:

stlsFRED@stls.frb.org

Adjusted Monetary Base

Averages of Daily Figures, Seasonally Adjusted

Billions of dollars



Adjusted Monetary Base

To the average of
two maintenance
periods ending:

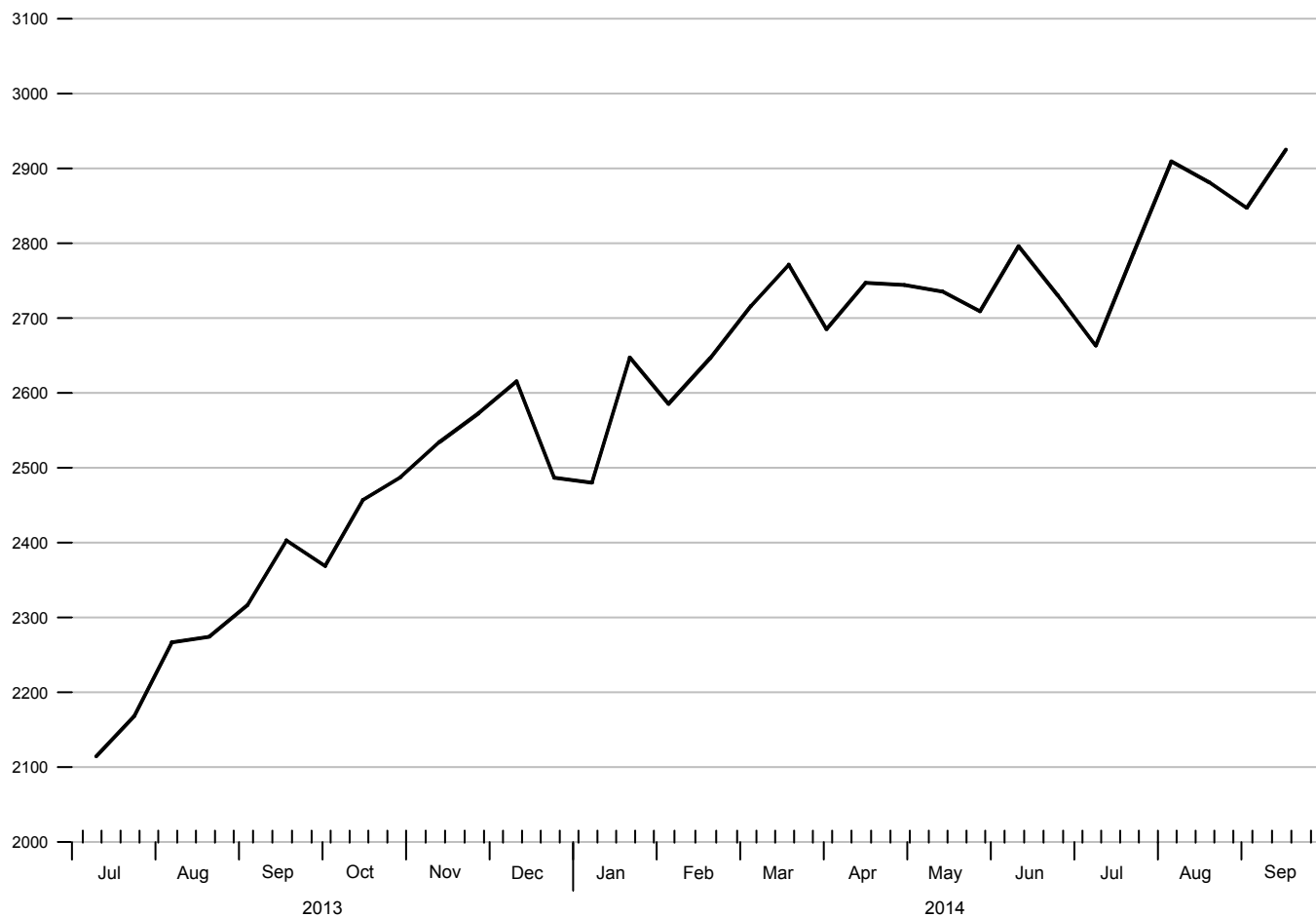
Compounded annual rates of change, average of two maintenance periods ending:

	09/18/13	12/11/13	02/19/14	03/19/14	04/16/14	05/14/14	06/25/14	07/23/14
02/19/14	23.7							
03/19/14	25.7	24.8						
04/16/14	22.9	20.4	20.6					
05/14/14	19.0	15.0	10.8	-0.4				
06/25/14	18.1	14.6	11.6	5.2	4.9			
07/23/14	16.1	12.3	8.9	3.5	2.8	6.8		
08/20/14	19.2	16.8	15.5	12.0	13.3	19.7	24.8	
09/17/14	17.4	14.8	13.0	9.7	10.4	14.5	15.2	25.1

Adjusted Reserves

Seasonally Adjusted

Billions of dollars

**Adjusted Reserves**To the average of
two maintenance
periods ending:

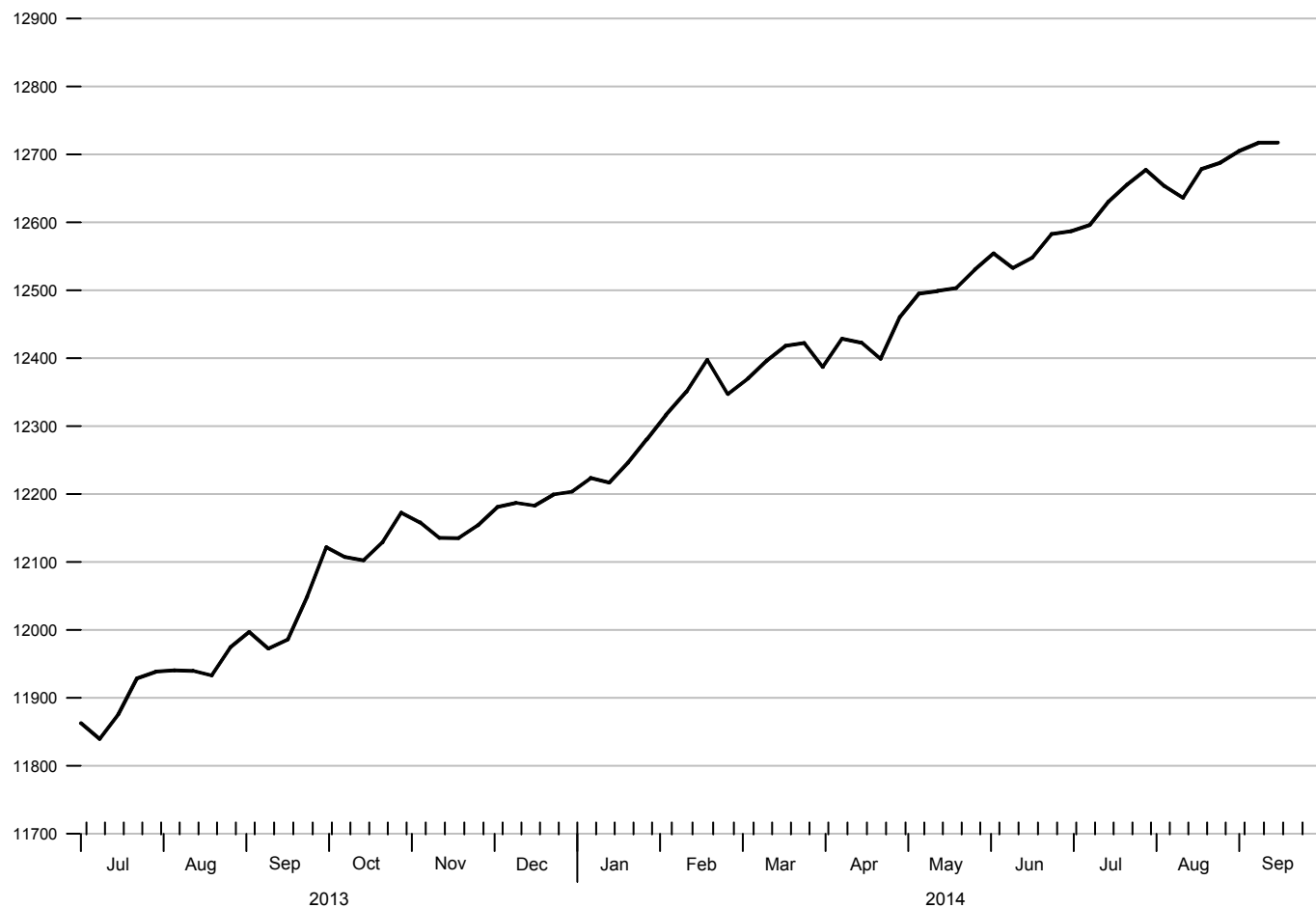
Compounded annual rates of change, average of two maintenance periods ending:

	09/18/13	12/11/13	02/19/14	03/19/14	04/16/14	05/14/14	06/25/14	07/23/14
02/19/14	27.6							
03/19/14	35.2	23.2						
04/16/14	27.6	14.2	27.7					
05/14/14	25.7	13.8	22.2	-0.9				
06/25/14	22.8	12.5	17.2	2.7	9.4			
07/23/14	18.6	8.3	10.2	-1.9	1.2	-2.8		
08/20/14	24.8	17.2	22.5	13.6	20.3	22.8	35.5	
09/17/14	22.3	14.9	18.6	10.6	15.4	16.2	20.7	45.2

MZM

Averages of Daily Figures, Seasonally Adjusted

Billions of dollars



MZM

To the average
of four weeks
ending:

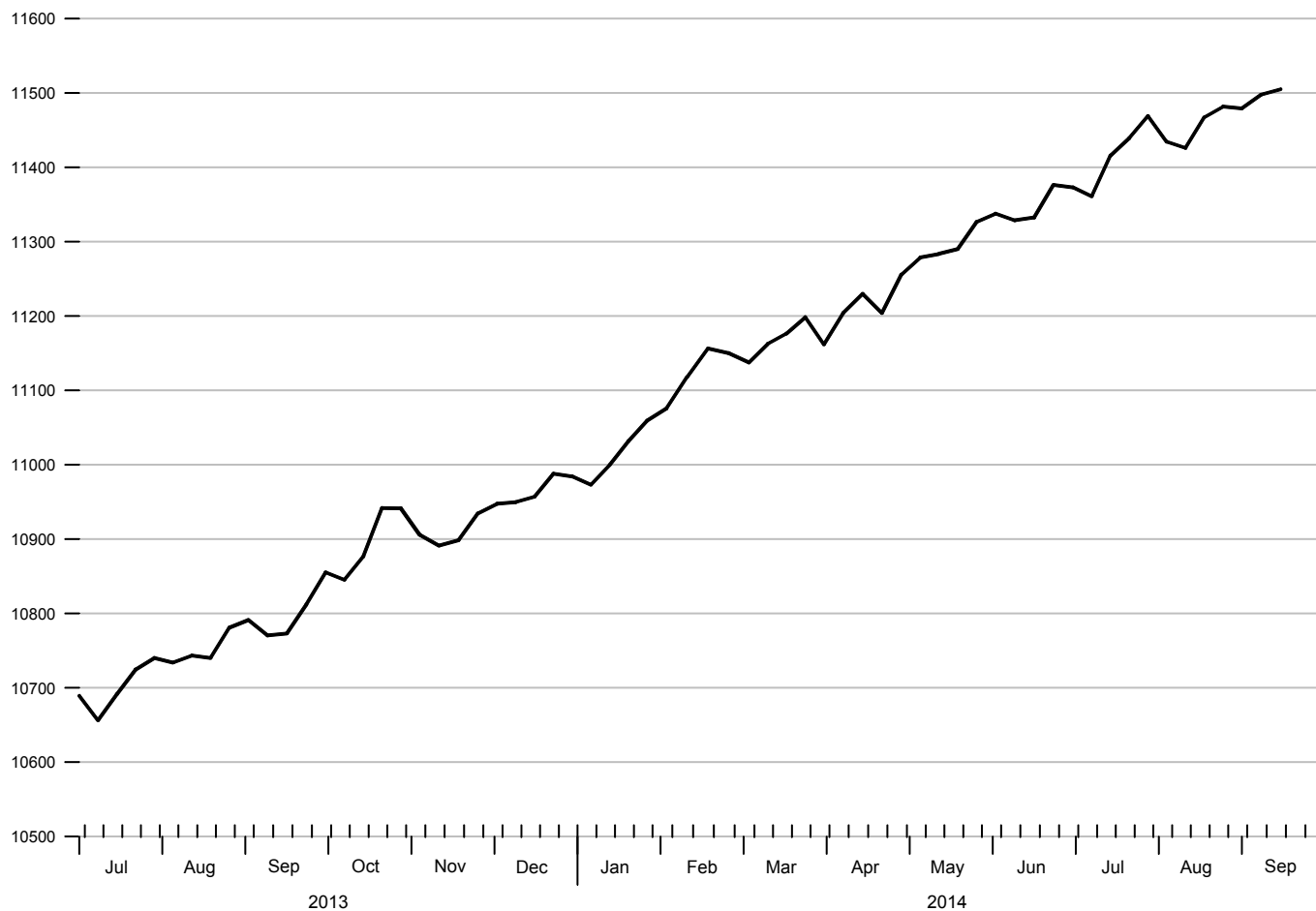
Compounded annual rates of change, average of four weeks ending:

	09/16/13	12/09/13	02/17/14	03/17/14	04/14/14	05/12/14	06/23/14	07/21/14
02/17/14	7.1							
03/17/14	6.8	6.8						
04/14/14	6.3	6.1	4.2					
05/12/14	6.2	5.9	4.5	4.3				
06/23/14	6.3	6.0	5.2	5.2	6.0			
07/21/14	6.3	6.1	5.5	5.6	6.2	6.6		
08/18/14	6.2	6.0	5.3	5.4	5.8	6.0	5.7	
09/15/14	6.0	5.8	5.3	5.3	5.6	5.7	5.4	4.7

M2

Averages of Daily Figures, Seasonally Adjusted

Billions of dollars

**M2**To the average
of four weeks
ending:

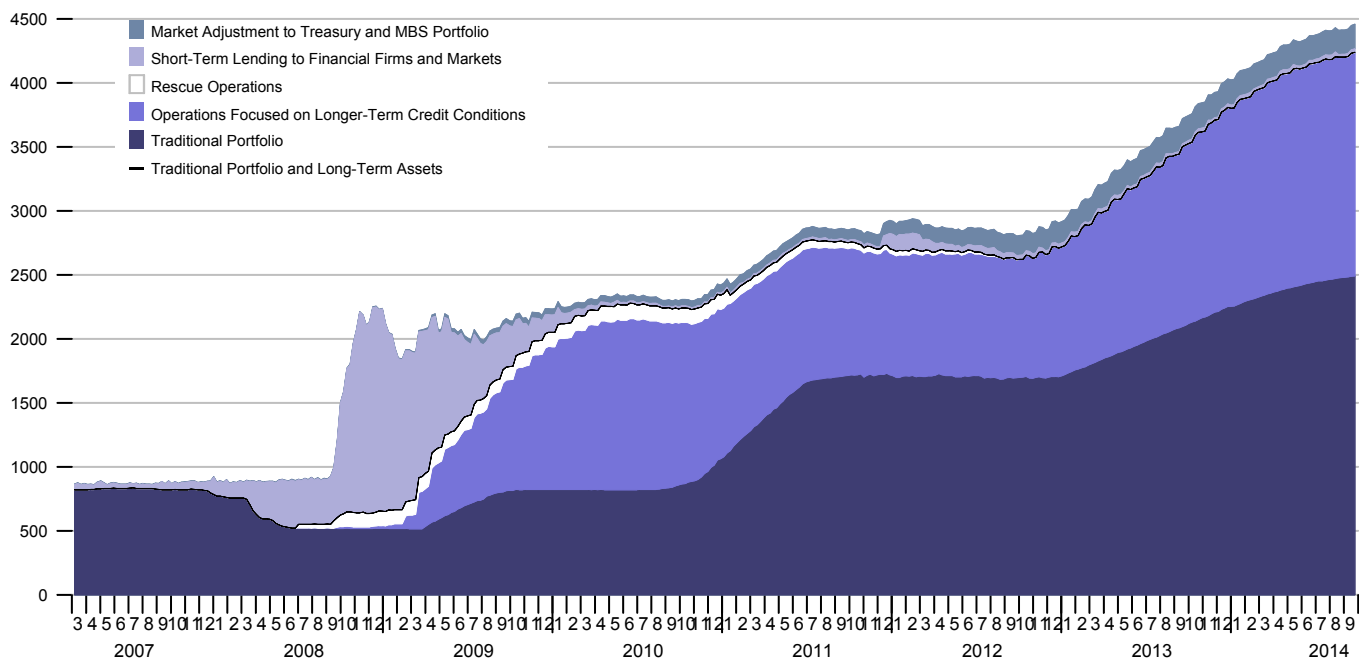
Compounded annual rates of change, average of four weeks ending:

	09/16/13	12/09/13	02/17/14	03/17/14	04/14/14	05/12/14	06/23/14	07/21/14
02/17/14	7.2							
03/17/14	7.1	7.8						
04/14/14	6.8	7.2	5.8					
05/12/14	6.8	7.1	6.1	5.9				
06/23/14	6.9	7.1	6.4	6.4	6.9			
07/21/14	6.8	7.0	6.4	6.4	6.8	6.7		
08/18/14	6.8	6.9	6.3	6.3	6.6	6.5	6.2	
09/15/14	6.6	6.7	6.2	6.1	6.4	6.2	5.9	5.6

Composition of Federal Reserve Assets

End of Period Wednesday Figures

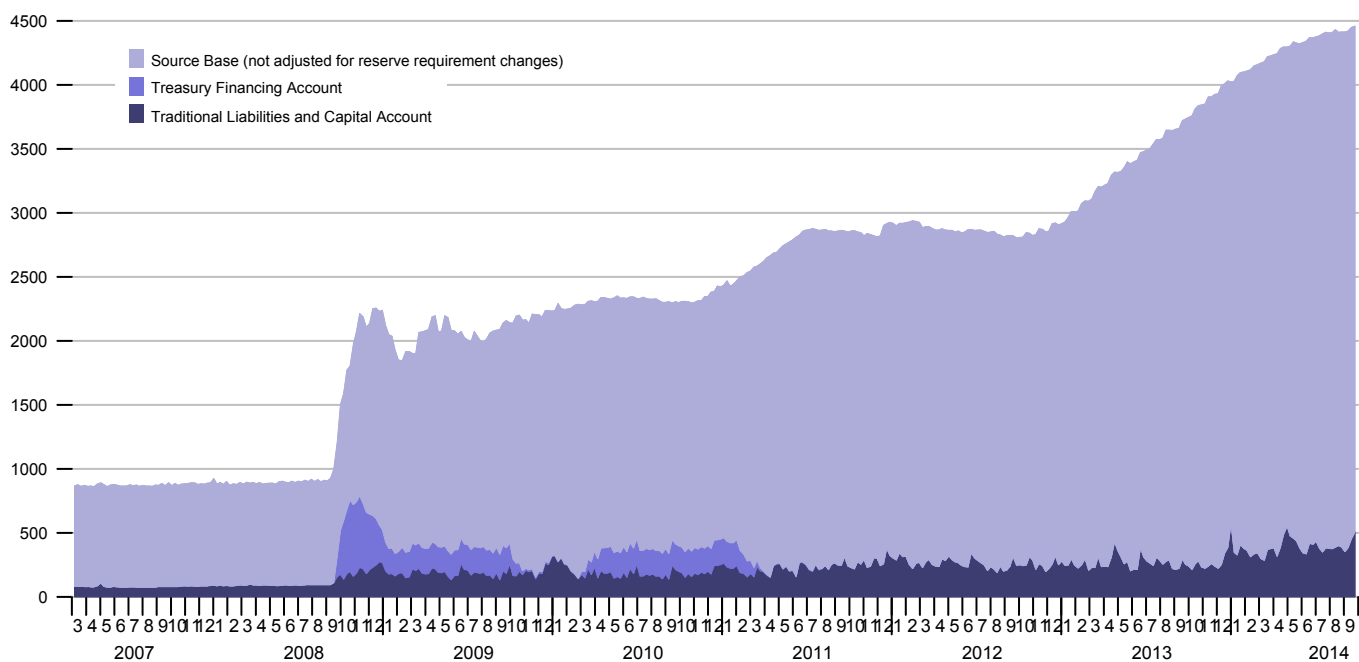
Billions of Dollars



Composition of Federal Reserve Liabilities

End of Period Wednesday Figures

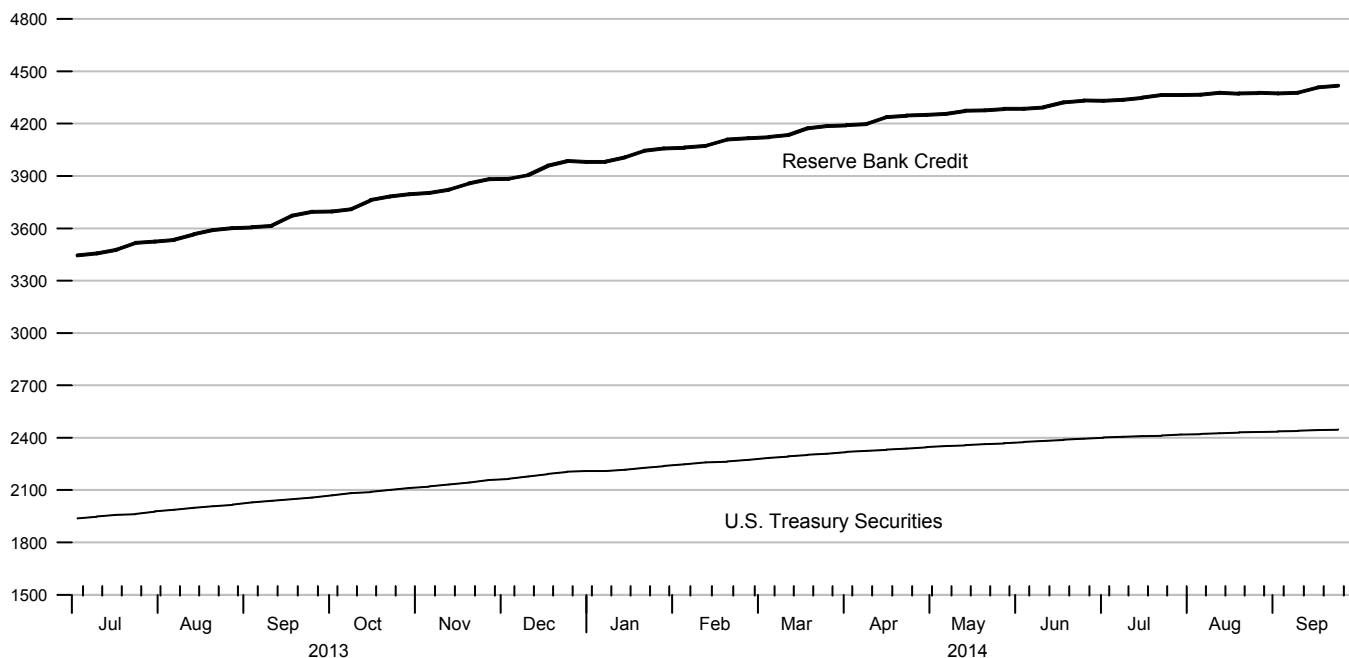
Billions of Dollars



Reserve Bank Credit and Federal Reserve Holdings of U.S. Treasury Securities

Averages of Daily Figures

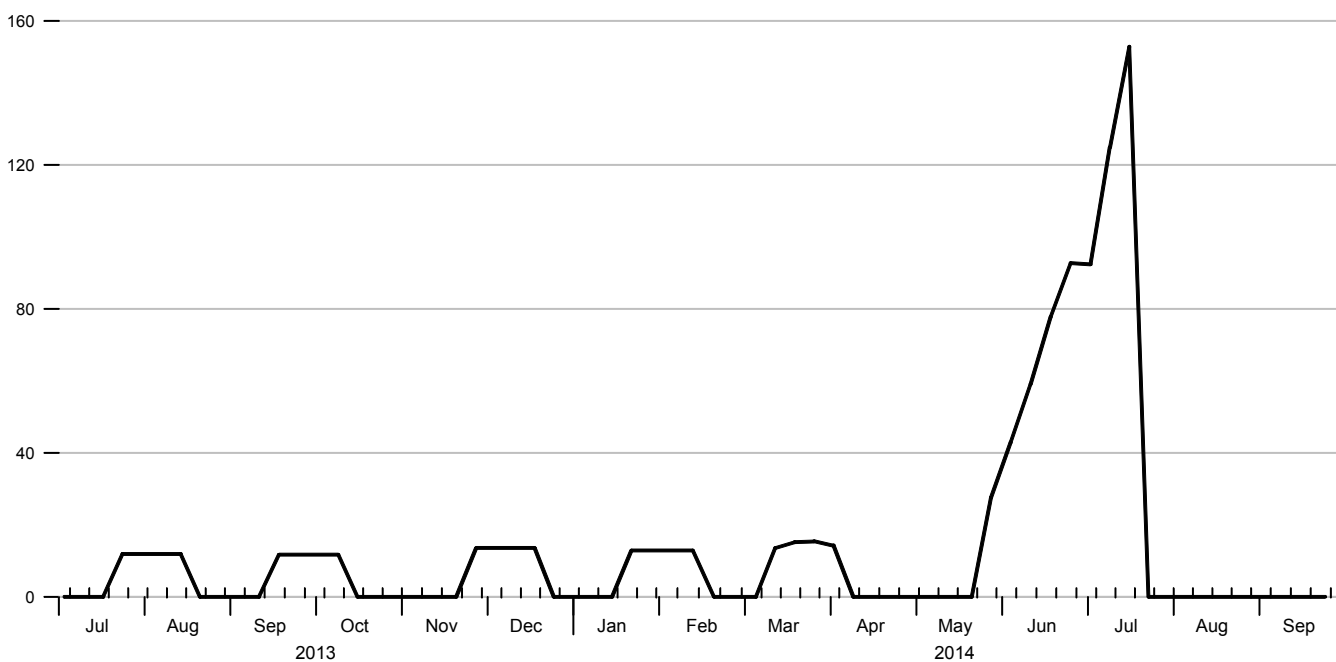
Billions of dollars



Term Deposits Held by Depository Institutions

End of Period Wednesday Figures

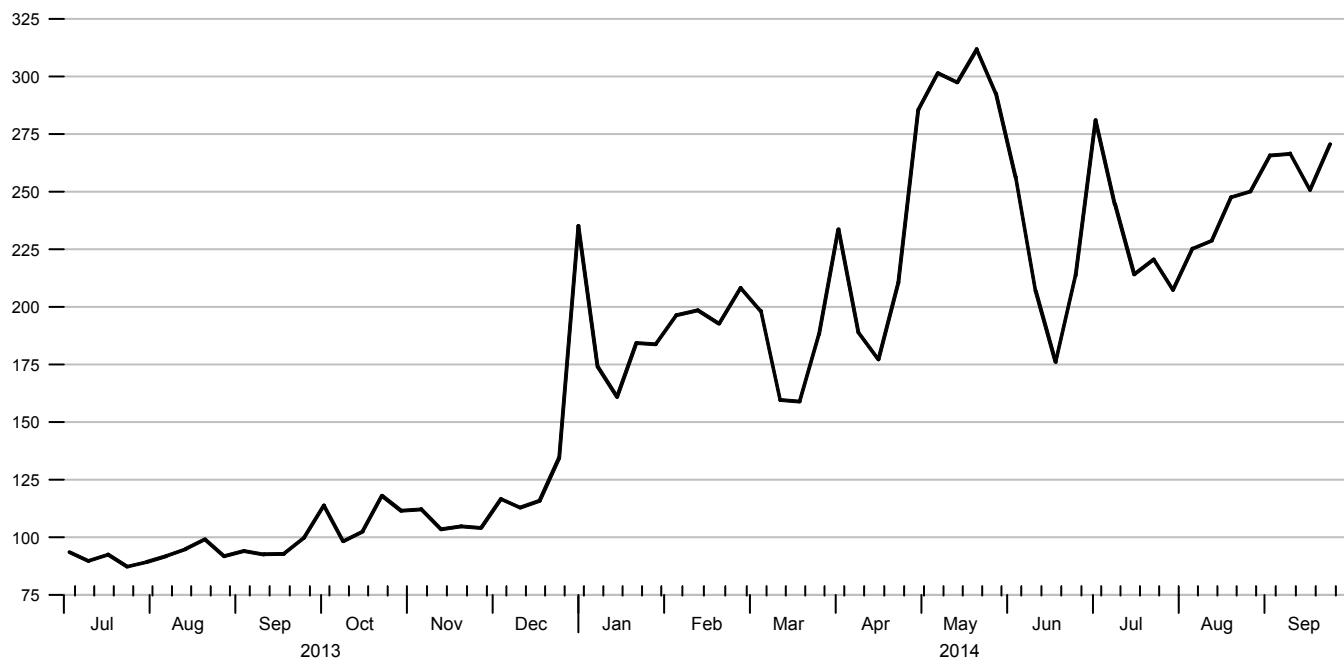
Billions of dollars



Factors Absorbing Reserve Funds: Reverse Repurchase Agreements

Averages of Daily Figures

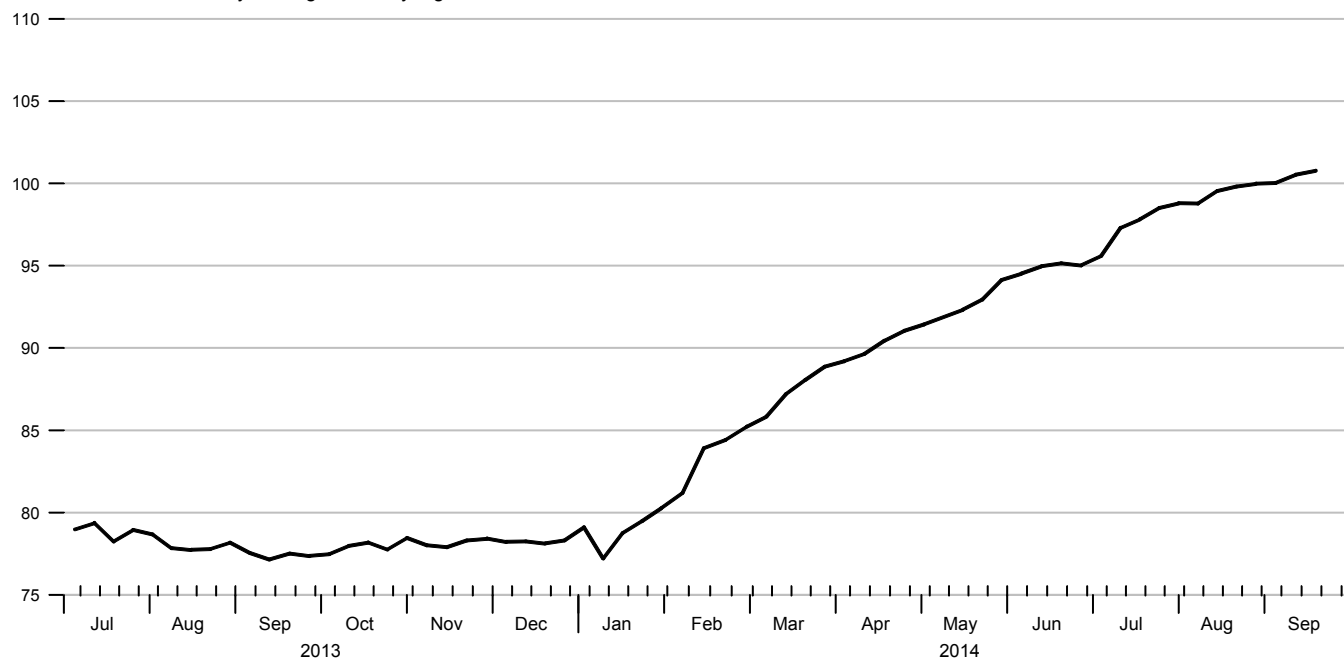
Billions of Dollars



Federal Reserve Earnings Remitted to the U.S. Treasury

52-Week Rolling Sums

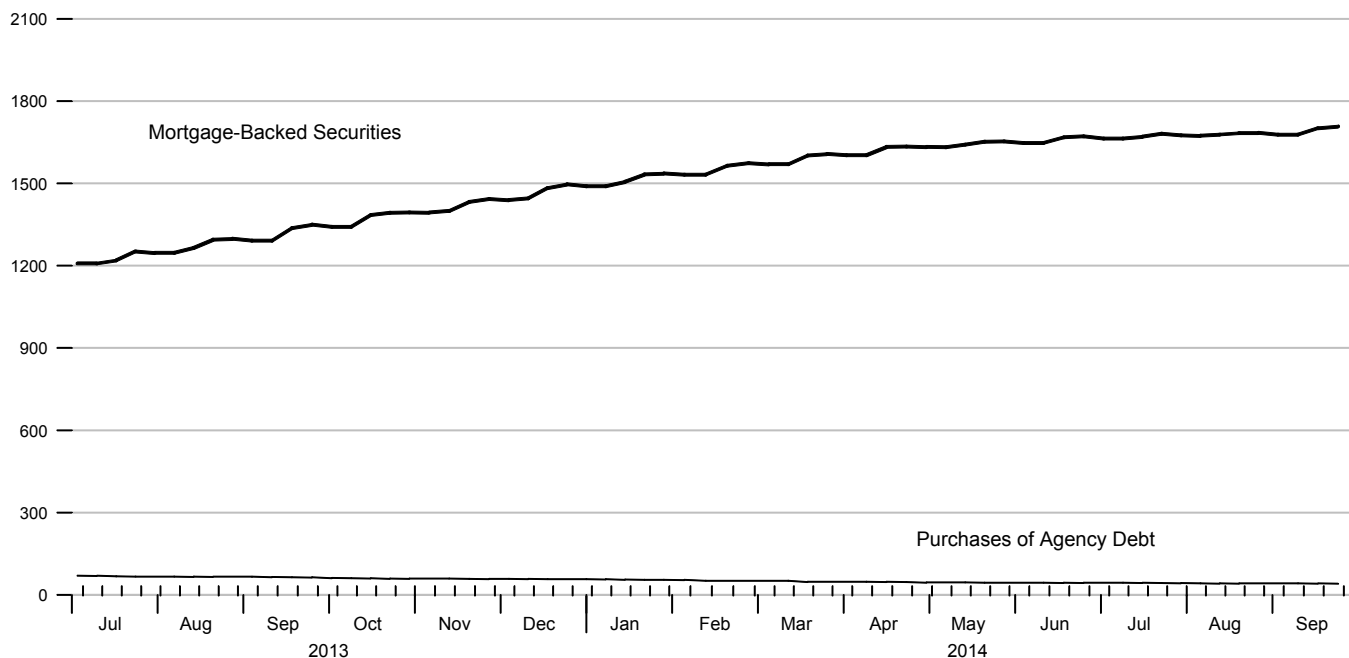
Billions of Dollars, Weekly Averages of Daily Figures



Federal Reserve Holdings of Agency Debt and Mortgage-Backed Securities

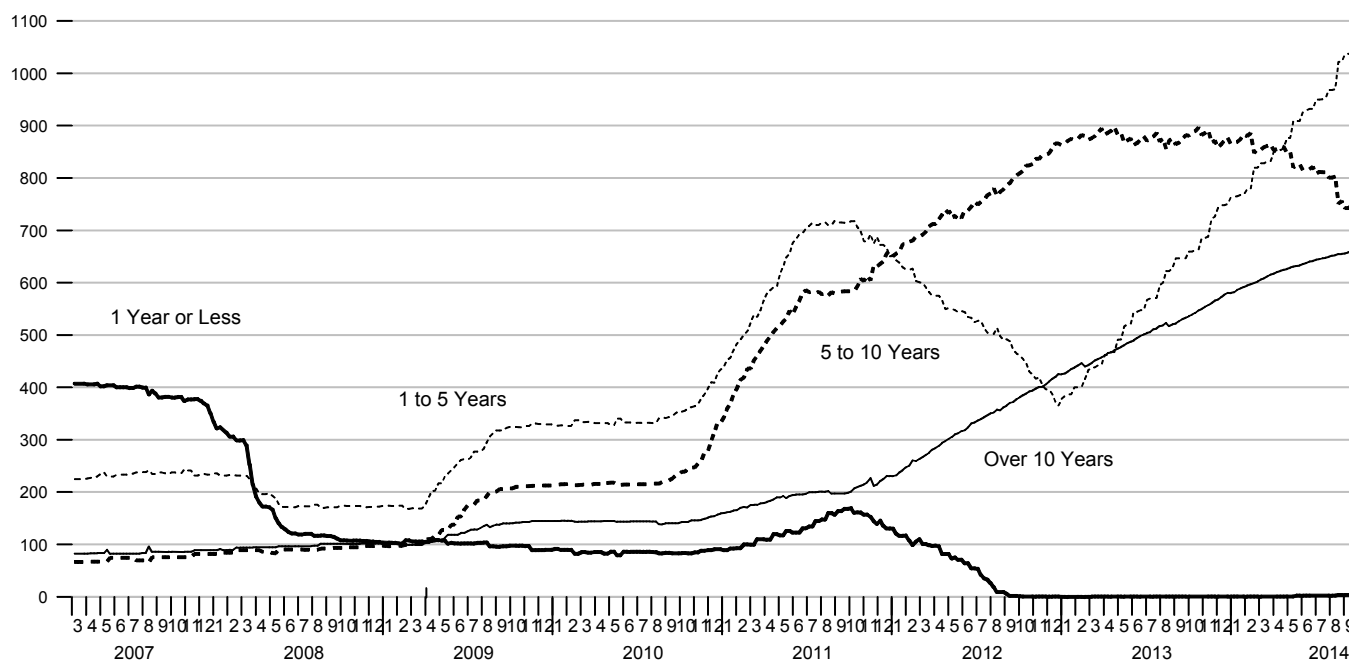
Averages of Daily Figures

Millions of Dollars



Maturity Distribution of U.S. Treasury Securities Held by the Federal Reserve

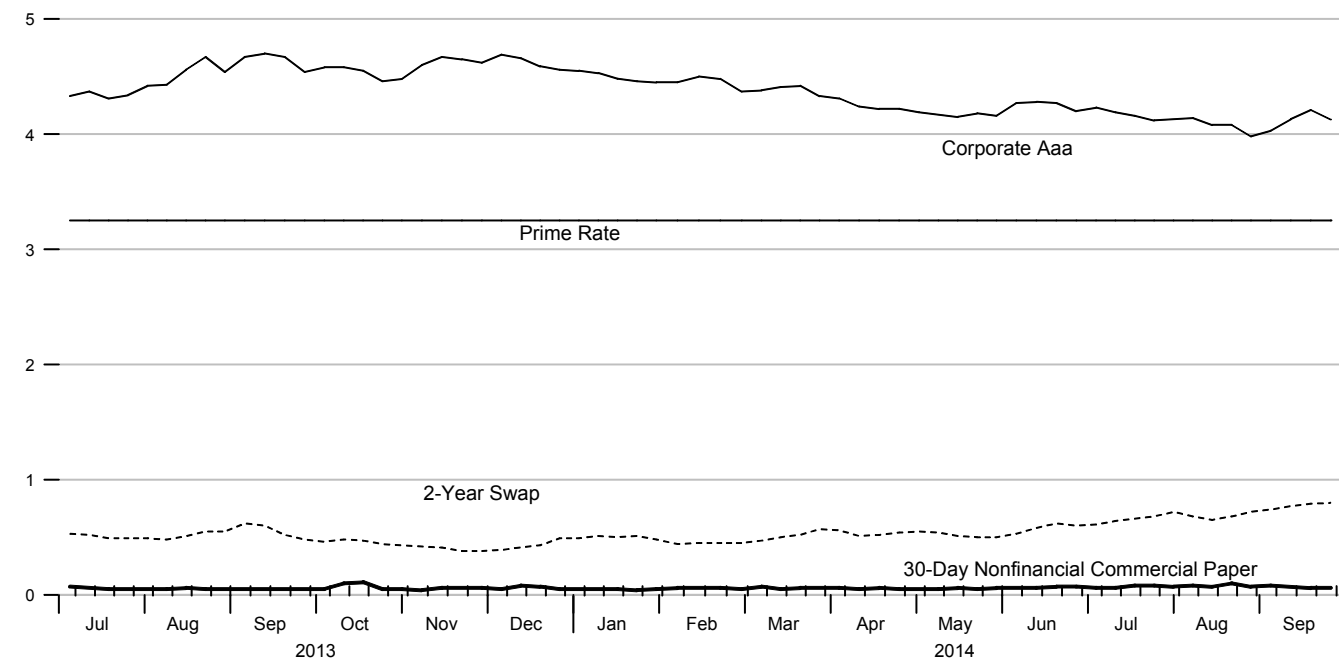
Billions of Dollars



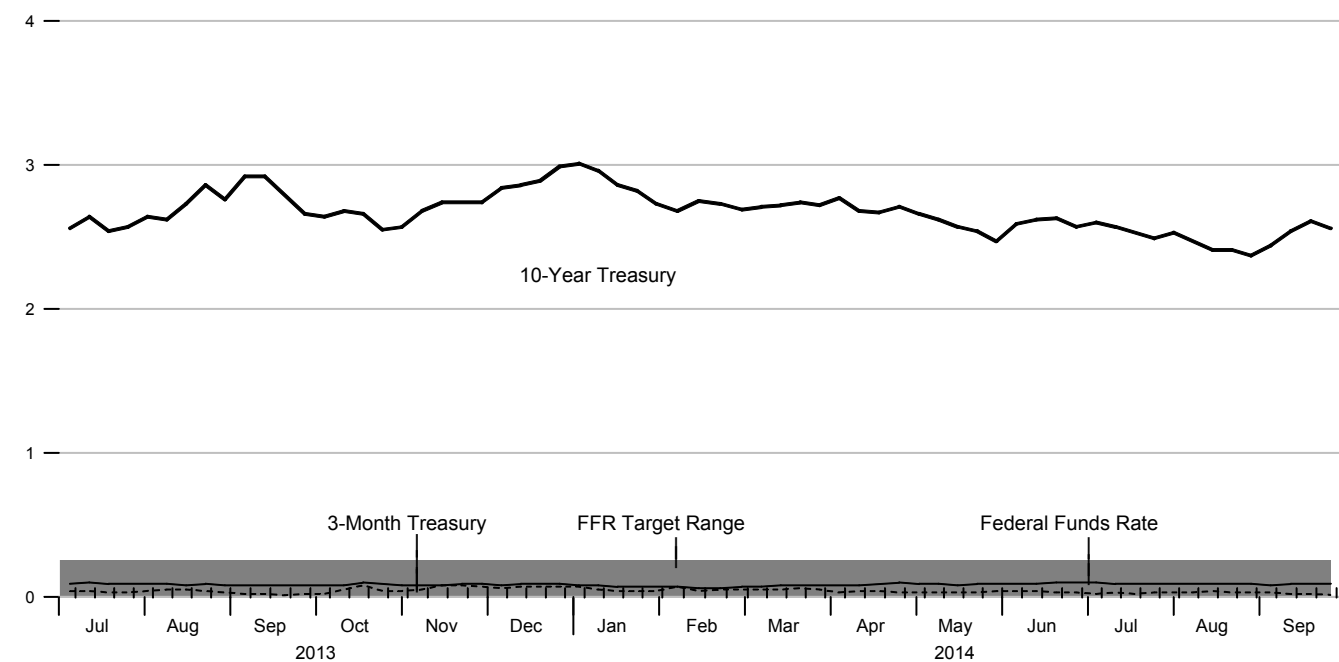
Yields on Selected Securities

Averages of Daily Figures

Percent



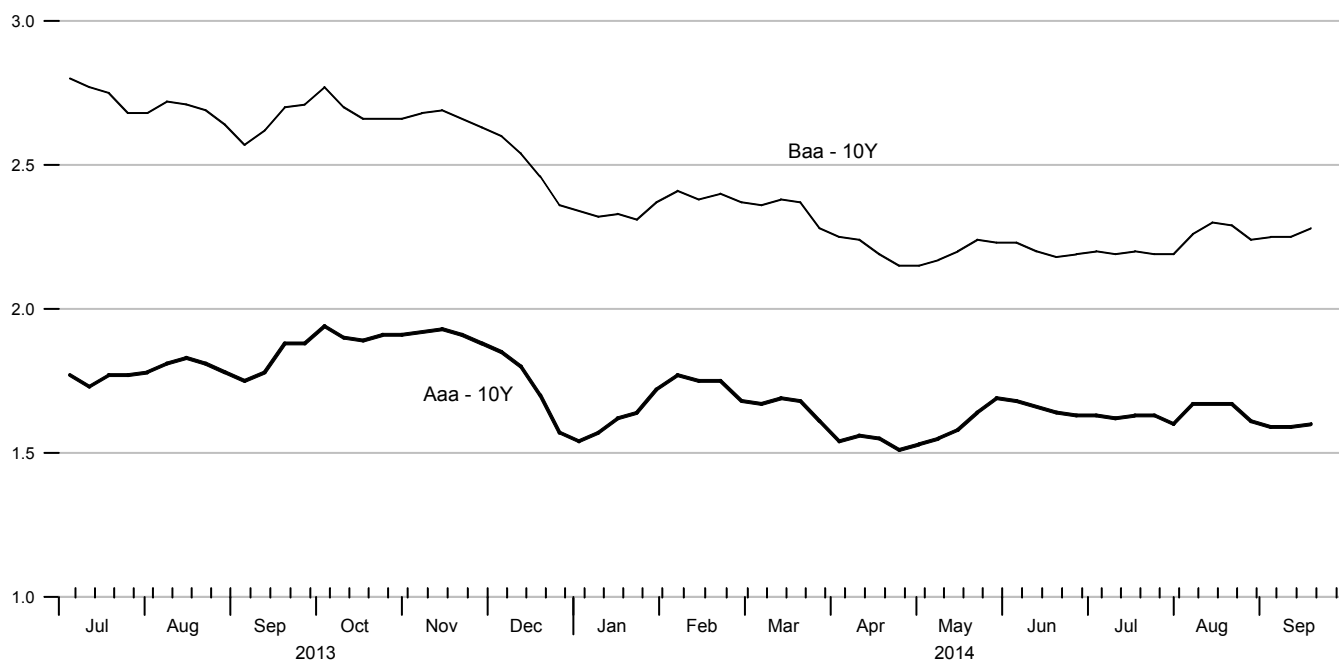
Percent



Corporate Bond Yields Relative to Yields on 10 - Year Treasury Securities

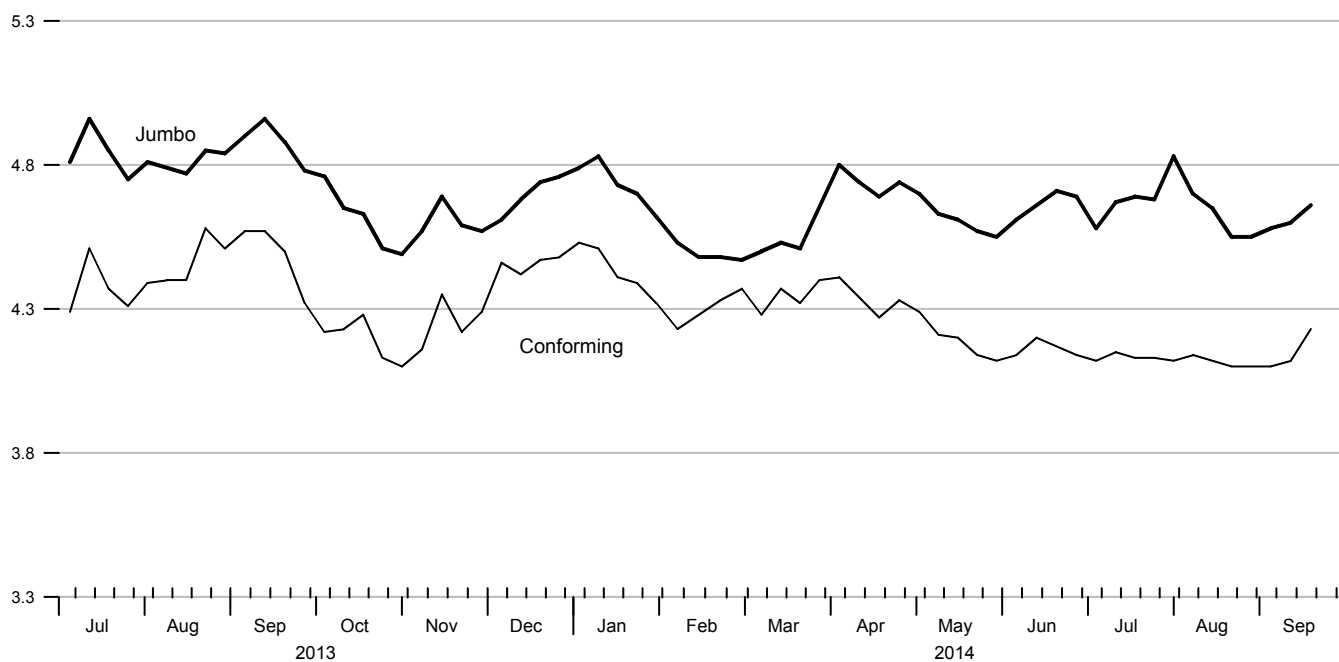
Averages of Daily Figures

Percent

**Interest Rates on 30 - Year Conforming and Jumbo Mortgages**

Averages of Daily Figures

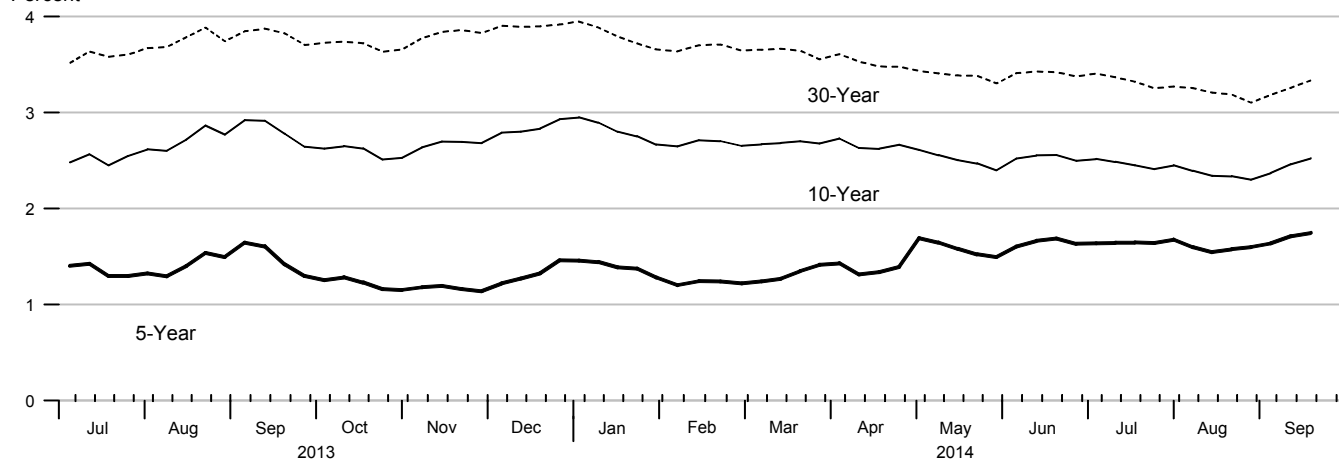
Percent



Treasury Note Yields

Averages of Daily Figures

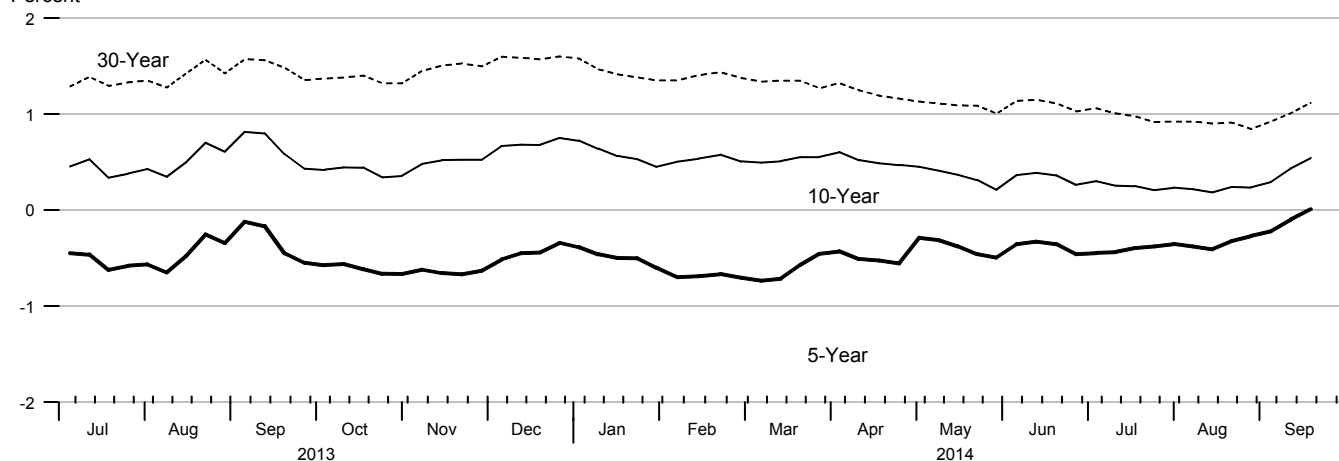
Percent



Inflation-Indexed Treasury Yields

Averages of Daily Figures

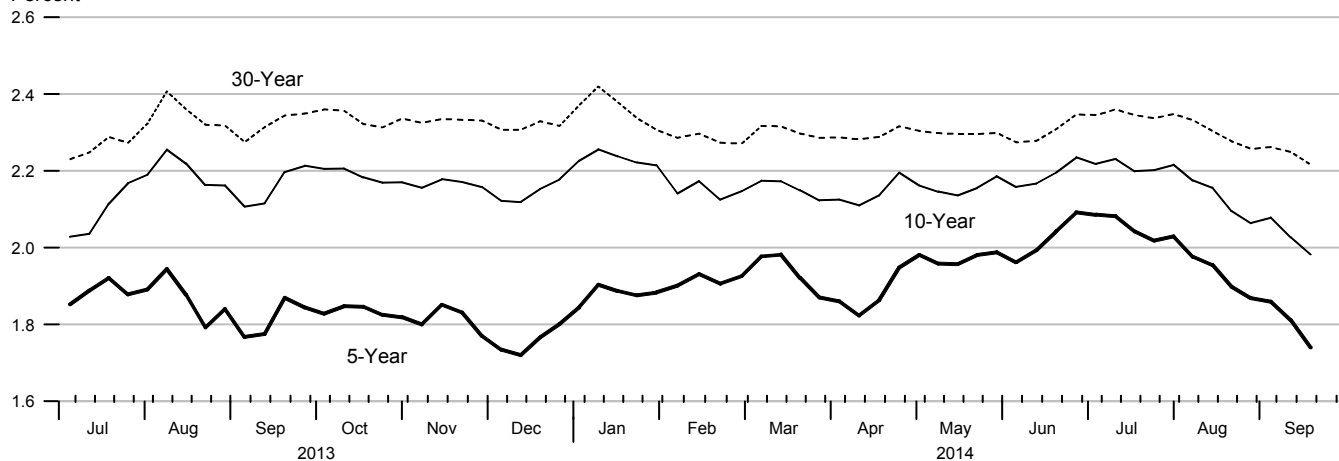
Percent



Inflation-Indexed Treasury Yield Spreads

Averages of Daily Figures

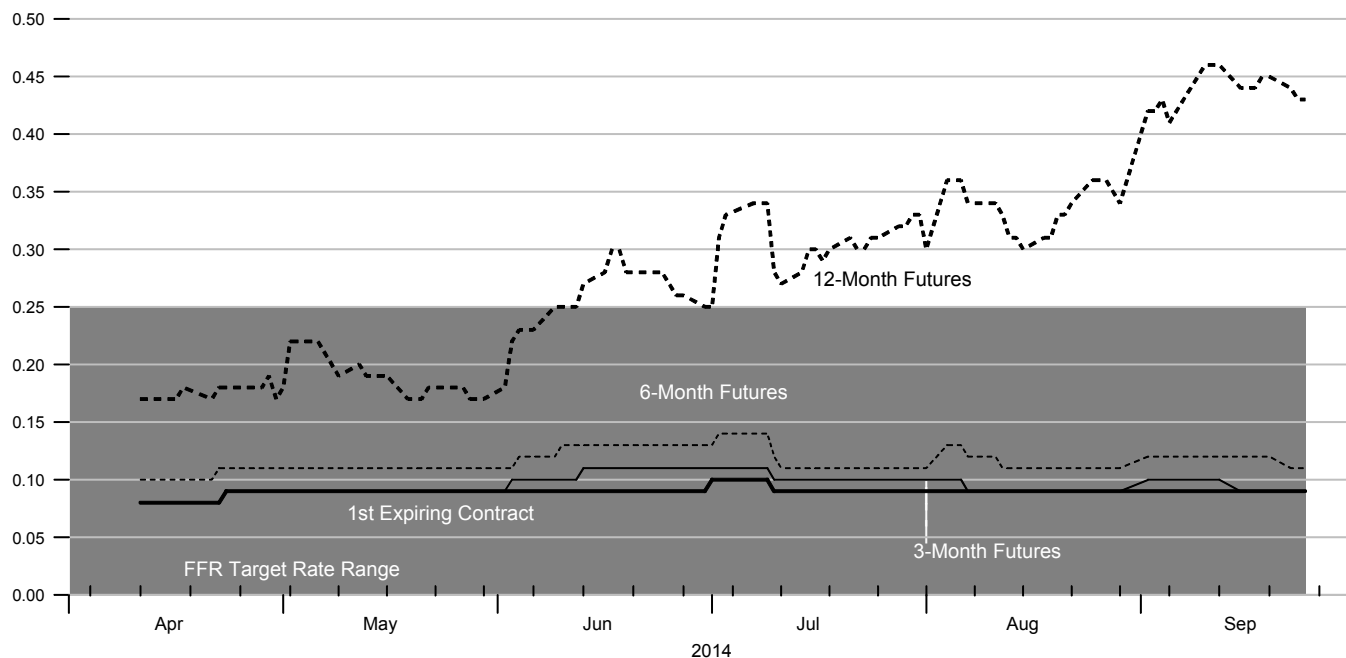
Percent



Rates on Federal Funds Futures Contracts

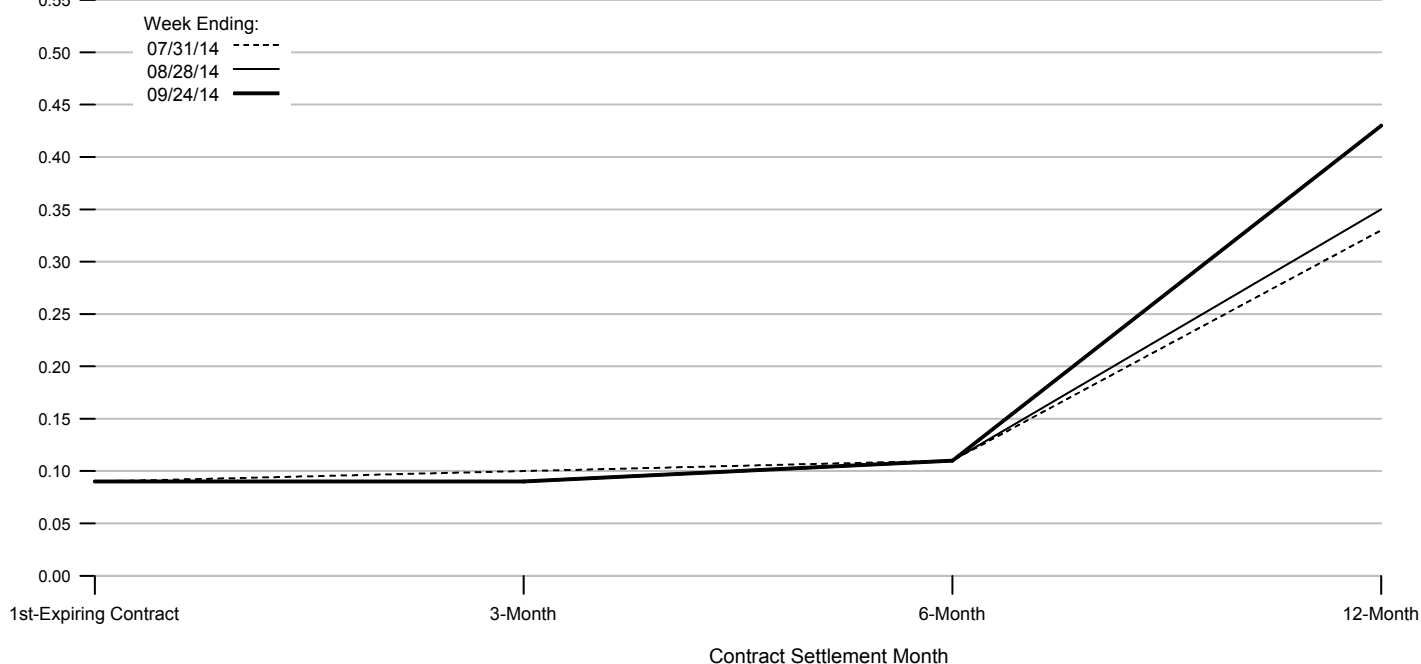
Daily Data

Percent



Rates on Federal Funds Futures on Selected Dates

Percent

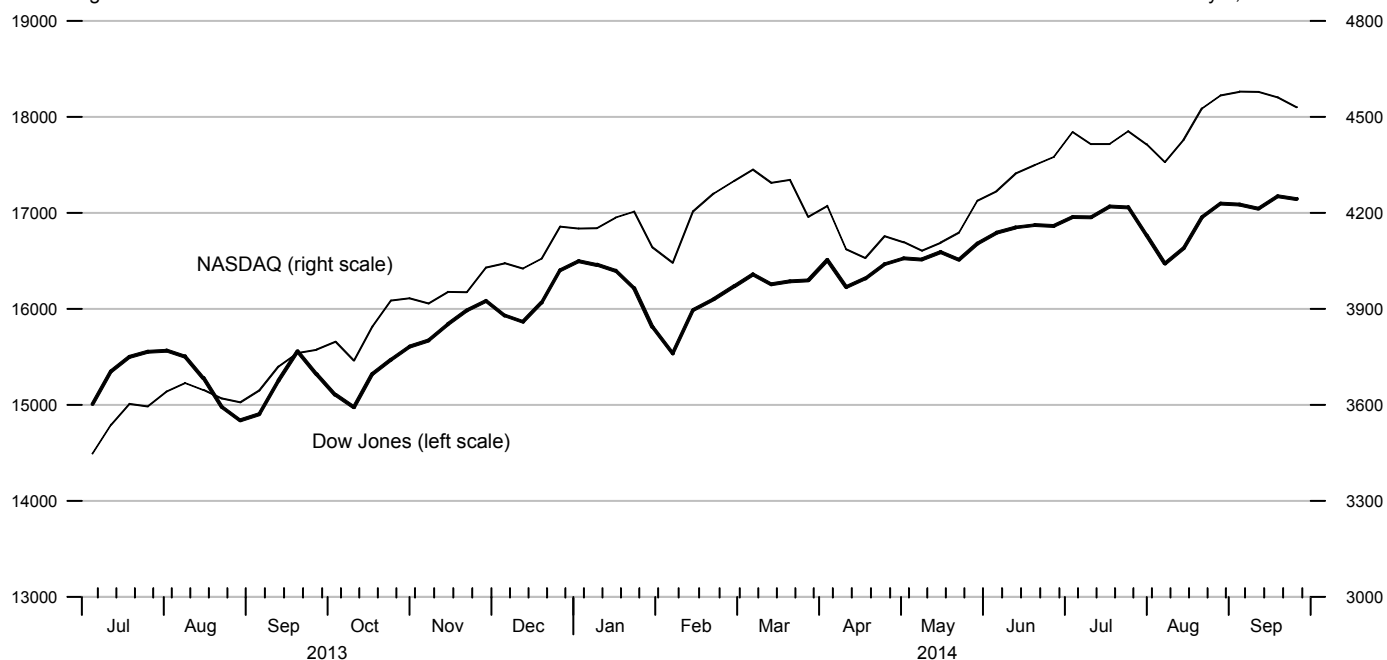


Dow Jones Industrial Average and NASDAQ Composite®

Averages of Daily Figures

Closing Price

February 5, 1971 = 100



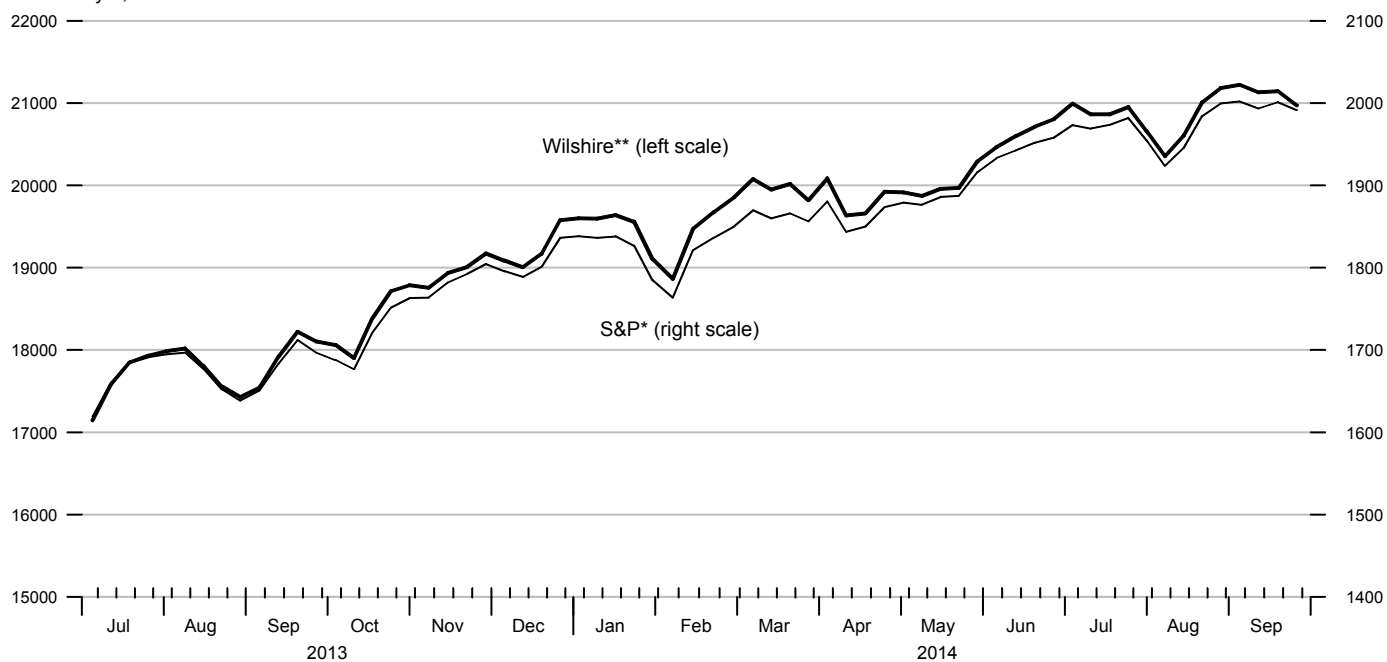
*The S&P Dow Jones Indices LLC series are Copyright ©2014, S&P Dow Jones Indices LLC. All rights reserved.

Wilshire 5000® and Standard & Poor's 500

Averages of Daily Figures

January 2, 1980 = 1078.29

1941-43 = 10



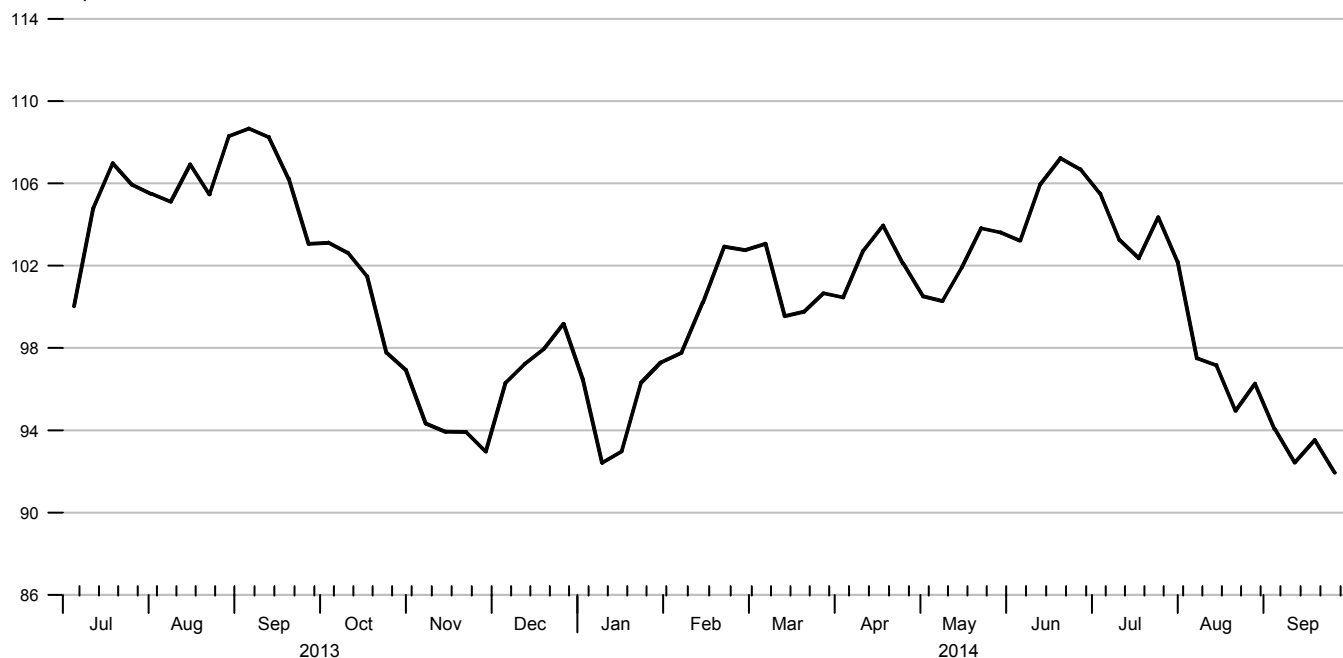
*The S&P Dow Jones Indices LLC series are Copyright ©2014, S&P Dow Jones Indices LLC. All rights reserved.

**Source: Wilshire Associates Incorporated, www.wilshire.com

Crude Oil Spot Prices

West Texas Intermediate, Averages of Daily Figures

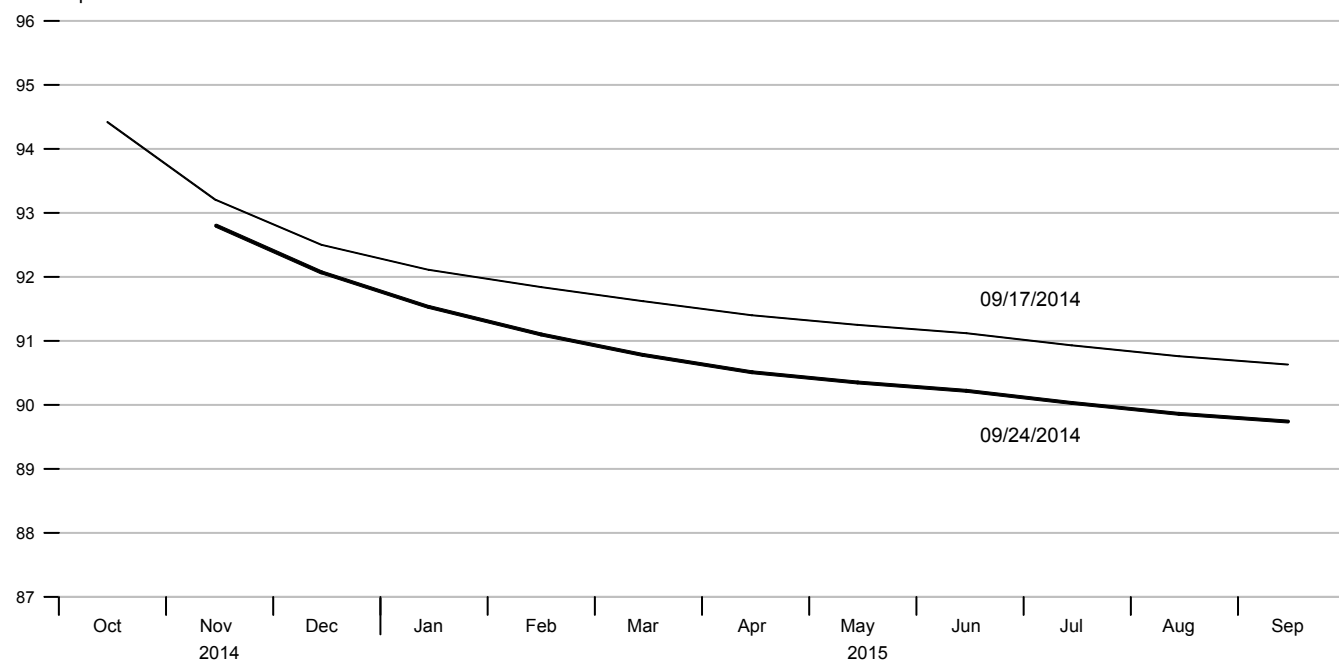
Dollars per barrel



Crude Oil Futures Prices

West Texas Intermediate

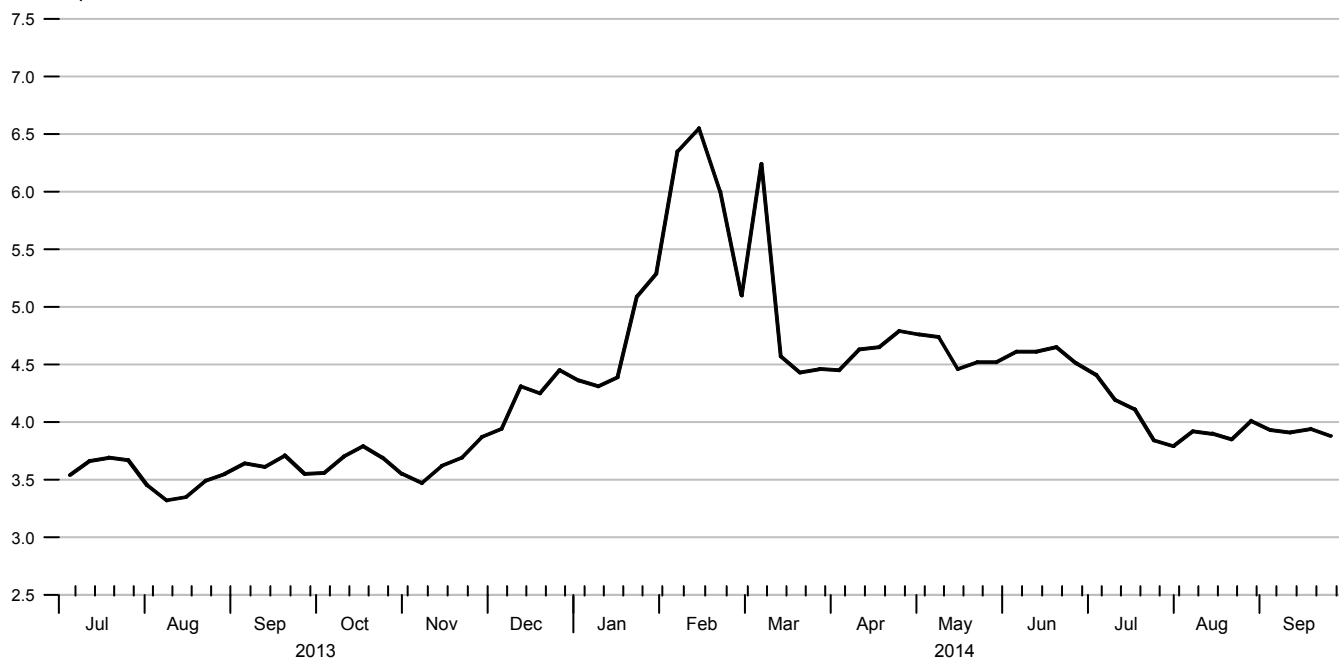
Dollars per barrel



Natural Gas Spot Prices

Henry Hub, Averages of Daily Figures

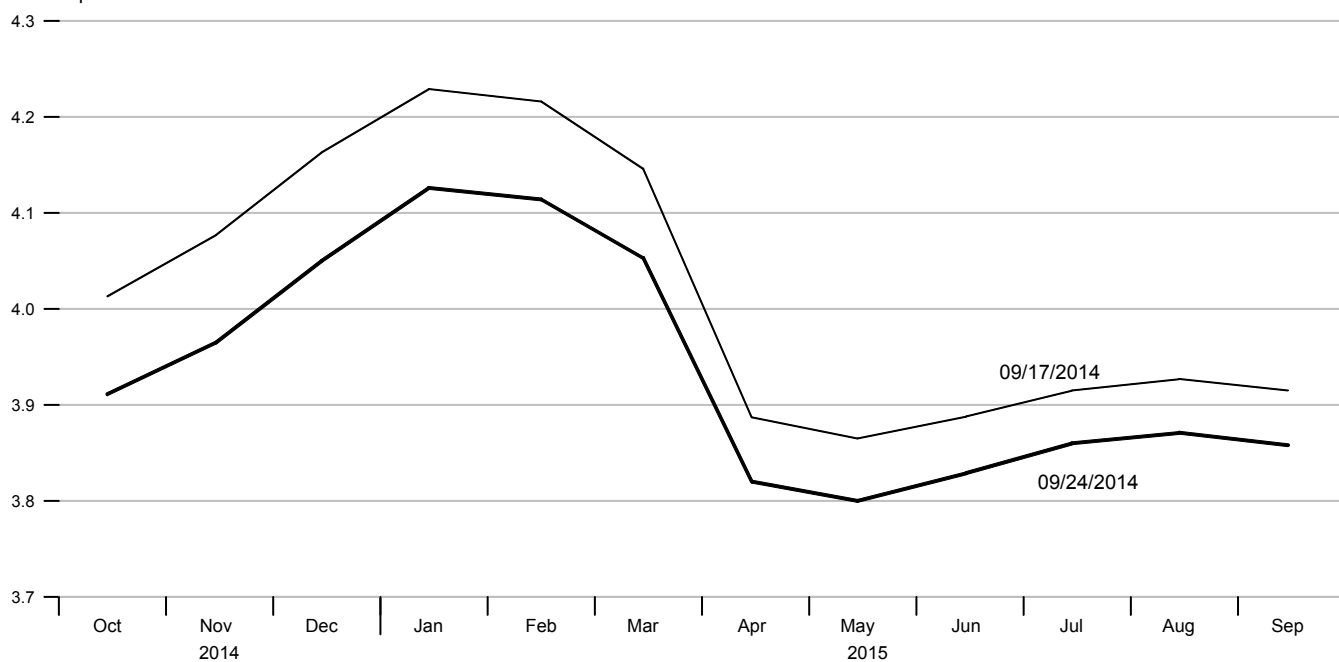
Dollars per million btu



Natural Gas Futures Prices

Henry Hub

Dollars per million btu

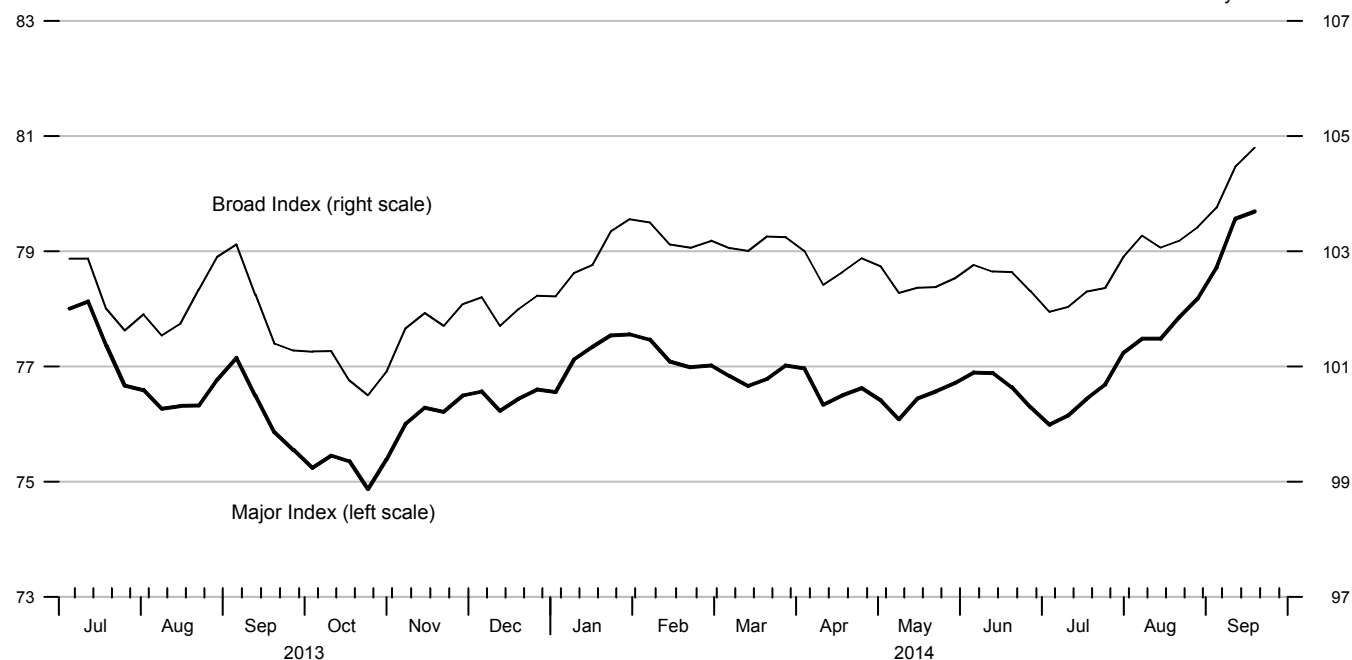


Trade-Weighted Exchange Rate Indexes

Averages of Daily Figures

March 1973=100

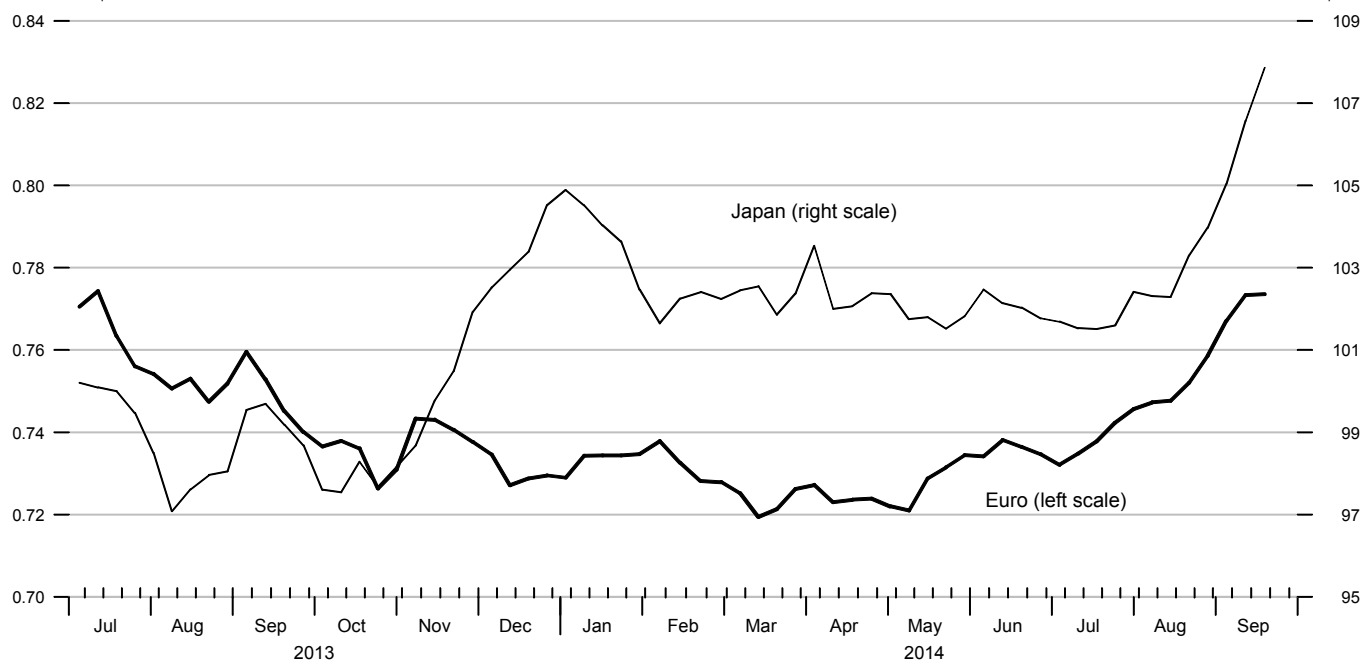
January 1987=100

**Exchange Rates**

Averages of Daily Figures

Euro/US\$

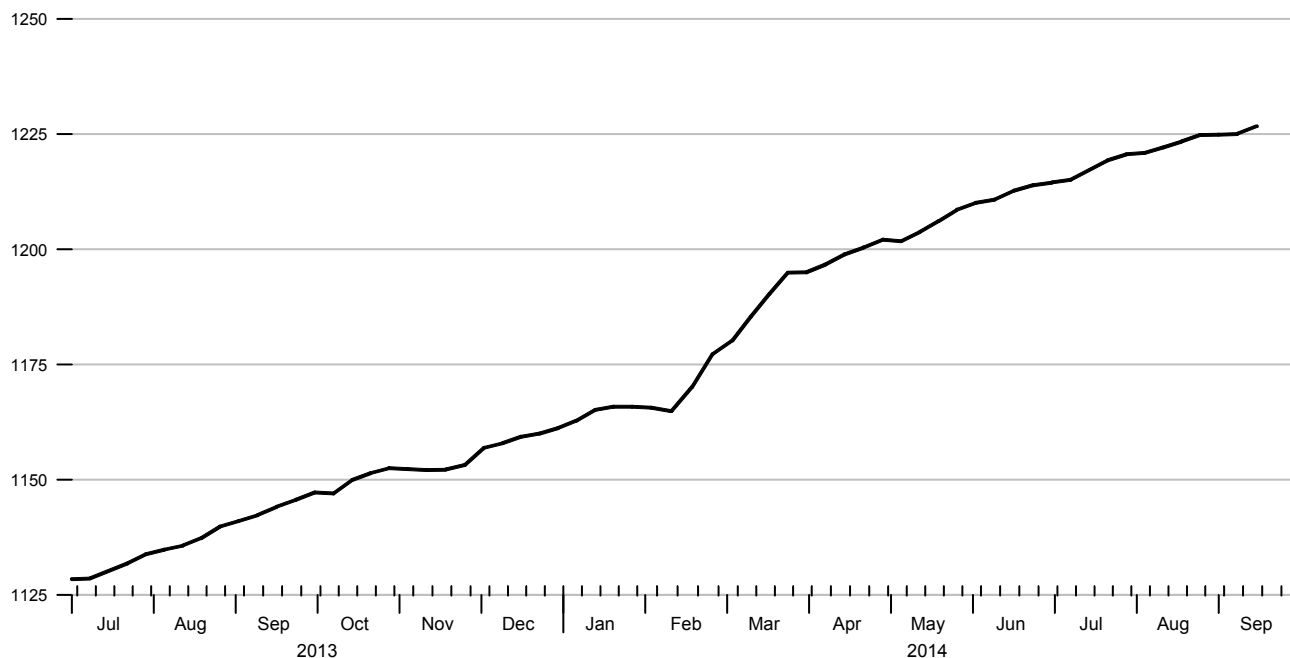
Yen/US\$



Currency Component of M1

Averages of Daily Figures, Seasonally Adjusted

Billions of dollars

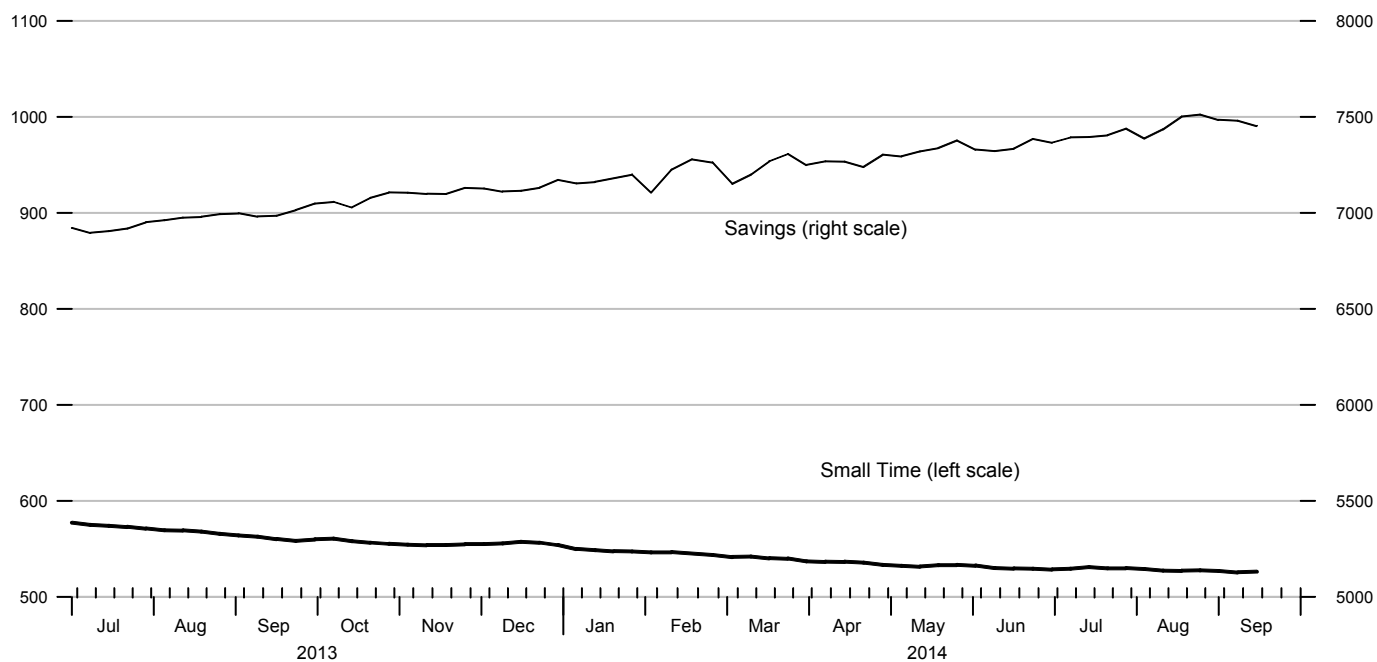


Savings and Small Time Deposits

Averages of Daily Figures, Seasonally Adjusted

Billions of dollars

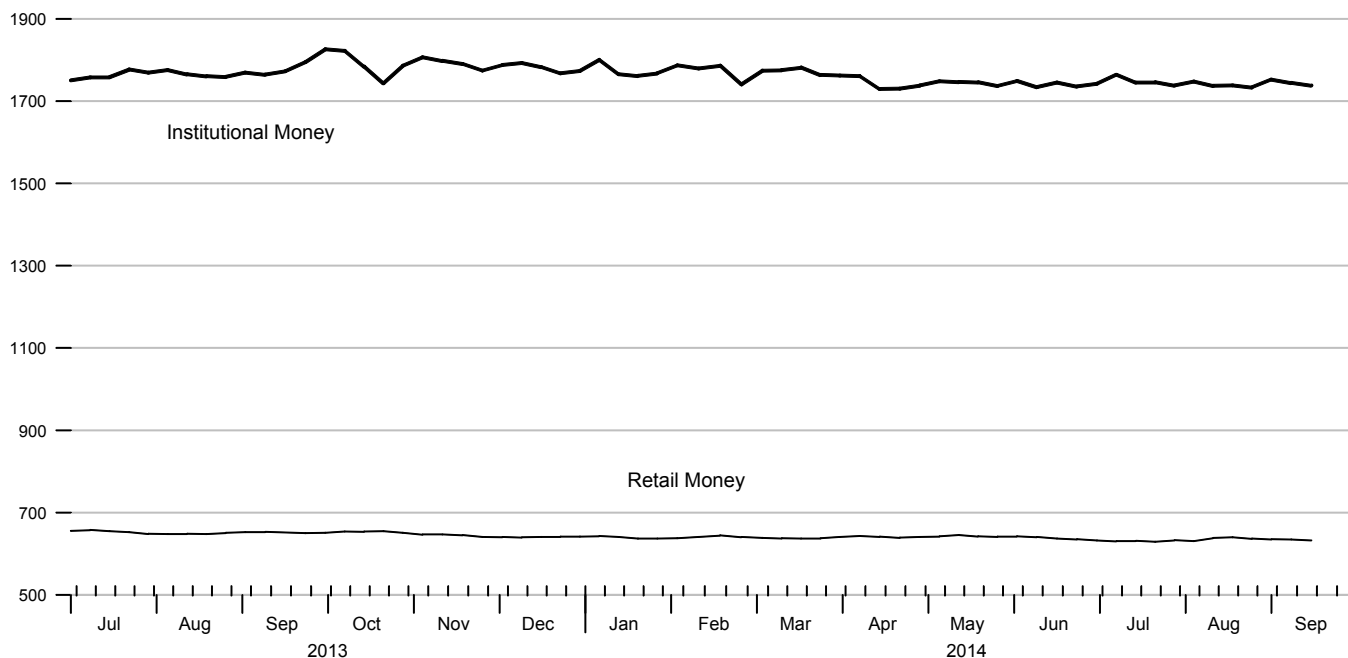
Billions of dollars



Institutional and Retail Money Funds

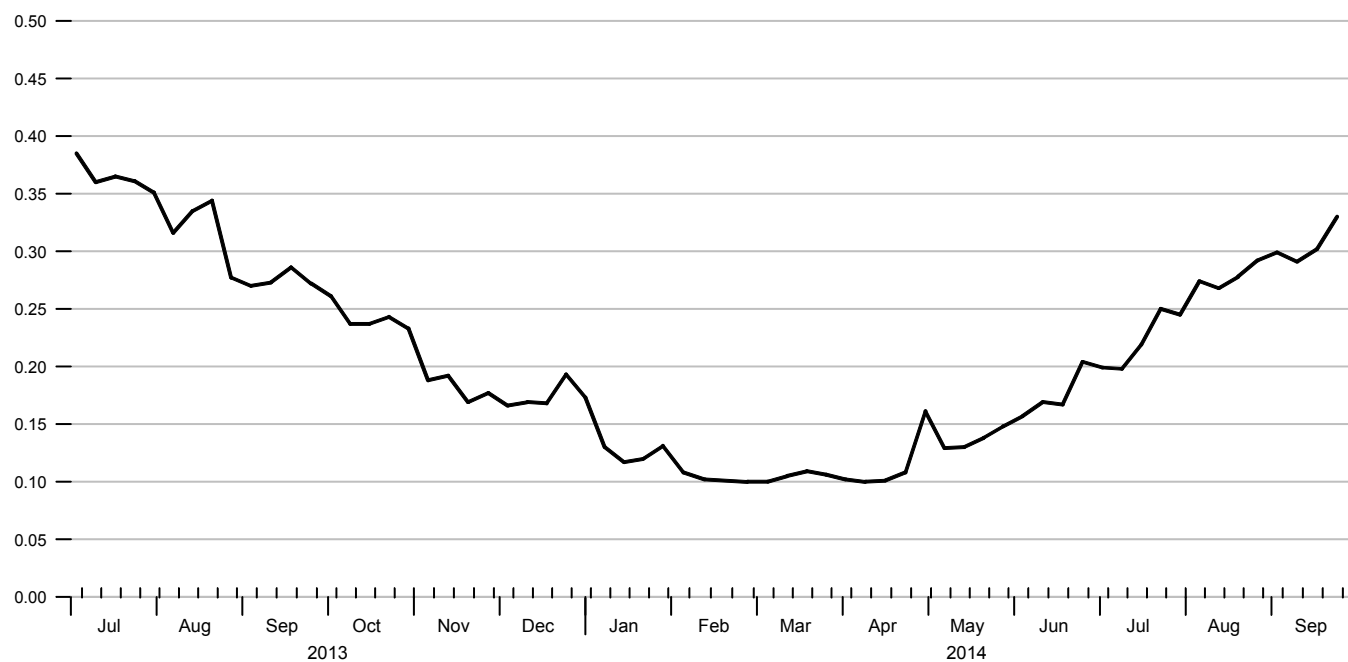
Averages of Daily Figures, Seasonally Adjusted

Billions of dollars

**Total Borrowings from Federal Reserve Banks**

Averages of Daily Figures

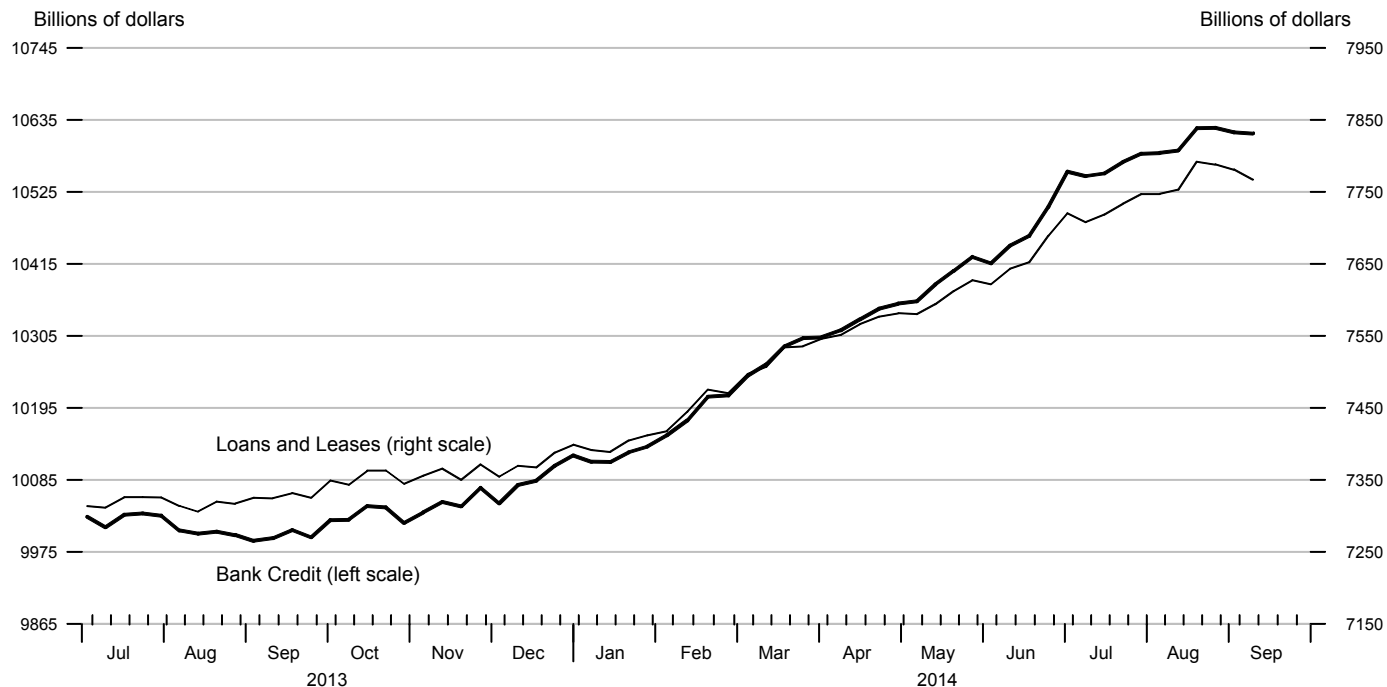
Billions of dollars



Note: Total borrowings include loans to depository institutions for primary, secondary, and seasonal credit, primary dealer and other broker-dealer credit. This category also contains asset-backed commercial paper money market mutual fund liquidity facility, credit extended to American International Group, Inc., net, term asset-backed securities loan facility, and other credit extensions. Term auction credit is excluded.

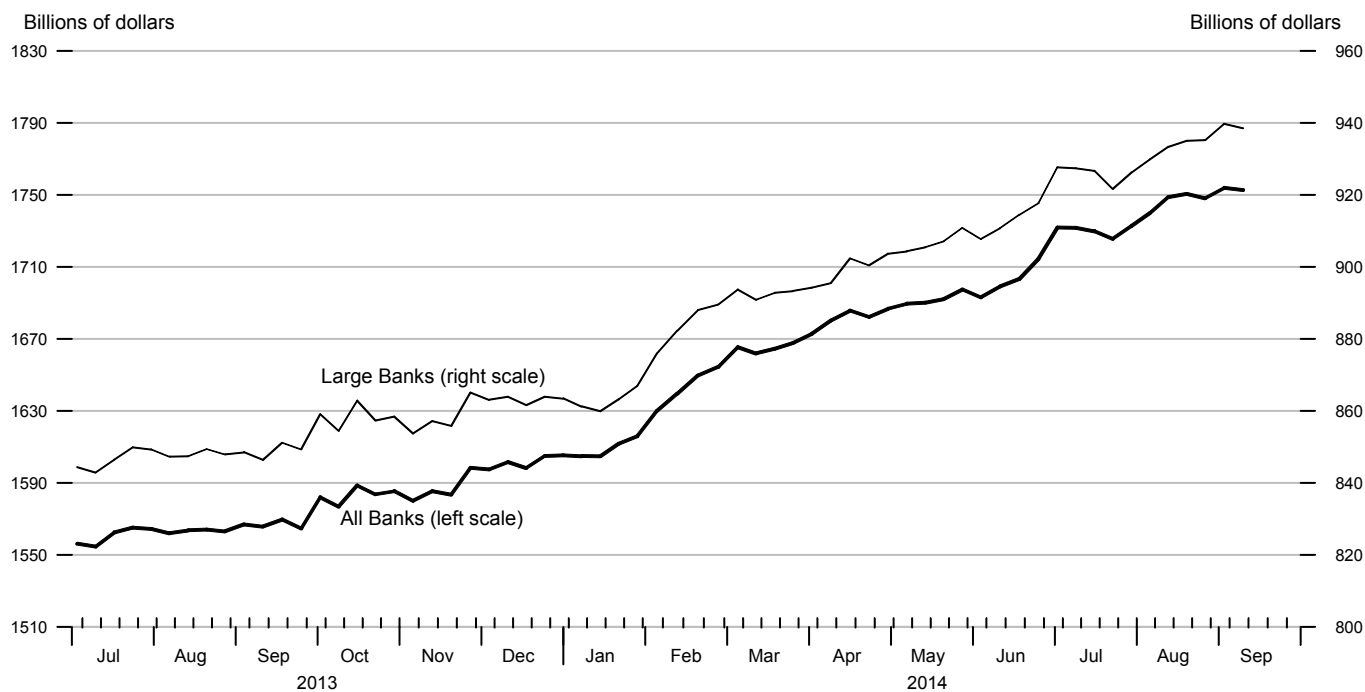
Bank Loans and Credit

All Commercial Banks in the United States, Seasonally Adjusted



Commercial and Industrial Loans

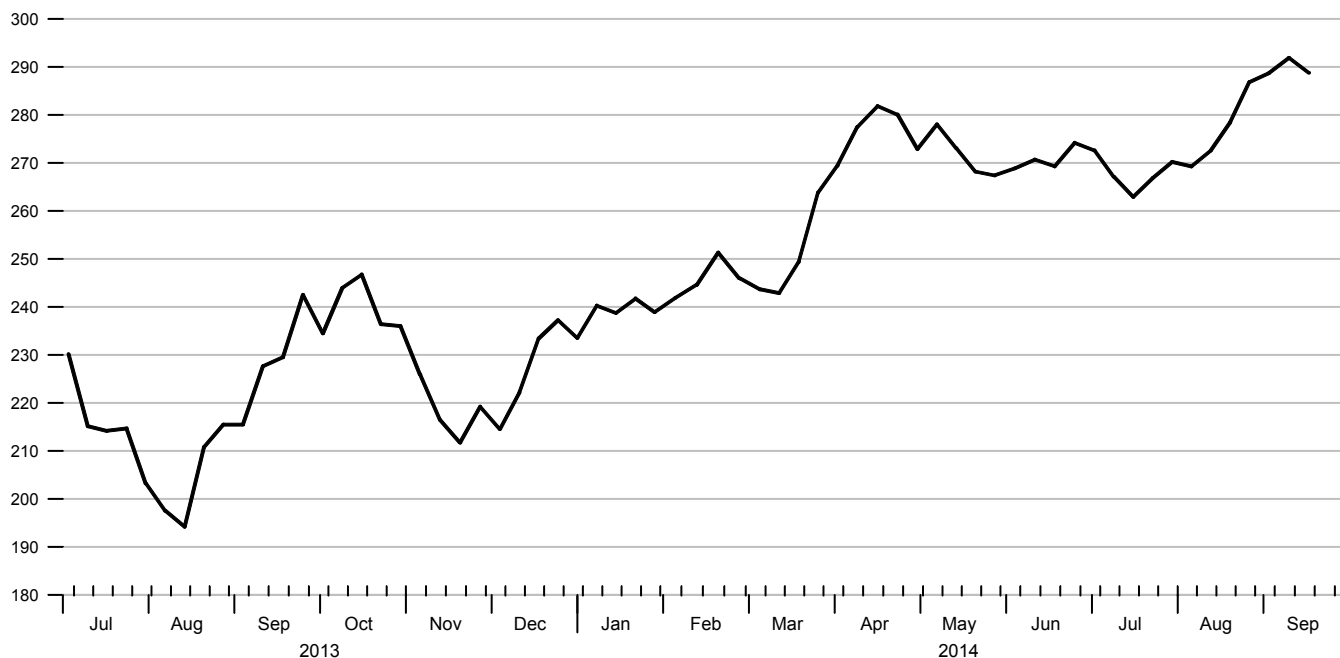
Seasonally Adjusted



Commercial Paper Outstanding of Nonfinancial Companies

Seasonally Adjusted

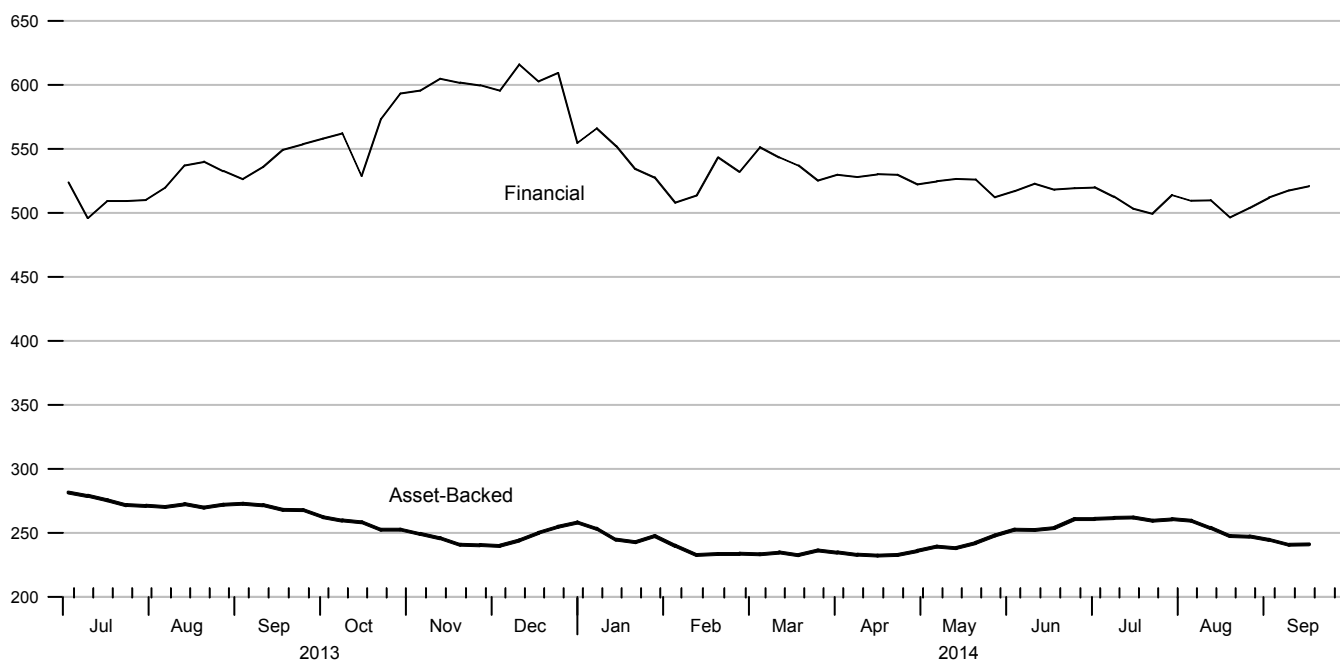
Billions of dollars



Commercial Paper Outstanding: Financial and Asset-Backed

Seasonally Adjusted

Billions of dollars



Interest Rates

Percent

		30-Day Comm. Paper	90-Day CDs Non-Jumbo	2-Year Interest Rate Swap	Corporate Aaa Bonds	Corporate Baa Bonds	Municipal Bonds	Federal Funds	3-Month Treasury Bill	2-Year Treasury Securities	5-Year Treasury Securities	10-Year Treasury Securities	30-Year Treasury Securities
Jul	4	0.06	0.08	0.61	4.23	4.80	4.31	0.10	0.02	0.49	1.68	2.60	3.42
	11	0.06	0.08	0.64	4.19	4.76	4.38	0.09	0.03	0.50	1.69	2.57	3.38
	18	0.08	0.08	0.66	4.16	4.73	4.36	0.09	0.02	0.49	1.69	2.53	3.33
	25	0.08	0.08	0.68	4.12	4.68	4.29	0.09	0.03	0.51	1.69	2.49	3.26
Aug	1	0.07	0.08	0.72	4.13	4.72	4.33	0.09	0.03	0.53	1.73	2.53	3.28
	8	0.08	0.08	0.68	4.14	4.73	4.31	0.09	0.03	0.46	1.64	2.47	3.26
	15	0.07	0.08	0.65	4.08	4.71	4.24	0.09	0.04	0.44	1.59	2.41	3.22
	22	0.10	0.08	0.68	4.08	4.70	4.21	0.09	0.03	0.48	1.63	2.41	3.20
	29	0.07	0.08	0.72	3.98	4.61	4.17	0.09	0.03	0.51	1.66	2.37	3.11
Sep	5	0.08	0.08	0.74	4.03	4.69	4.09	0.08	0.03	0.53	1.70	2.44	3.19
	12	0.07	0.08	0.77	4.13	4.79	4.14	0.09	0.02	0.57	1.78	2.54	3.27
	19	0.06	0.08	0.79	4.21	4.89	4.17	0.09	0.02	0.58	1.82	2.61	3.34
	26 *	0.06	.	0.80	4.13	4.83	.	0.09	0.01	0.58	1.80	2.56	3.27

*Averages of rates available

Money Stock and Components

Billions of dollars, seasonally adjusted

		M2	MZM	Currency	Small Time	Savings	Retail Money	Institutional Money
Aug	4	11435	12654	1221	528.8	7388.5	630.6	1747.8
	11	11426	12636	1222	527.3	7435.5	638.1	1737.5
	18	11467	12679	1223	527.1	7501.4	639.7	1738.7
	25	11482	12688	1225	527.5	7512.0	636.5	1733.9
Sep	1	11479	12705	1225	527.0	7484.8	634.8	1752.7
	8	11498	12717	1225	525.4	7481.0	634.6	1744.8
	15	11505	12718	1227	526.1	7453.8	632.3	1738.4

Reserves and Base

Billions of dollars, seasonally adjusted

		Adjusted Monetary Base	Adjusted Reserves
Jun	25	3963.073	2730.83
Jul	9	3914.307	2663.38
	23	4040.953	2787.20
Aug	6	4120.924	2909.37
	20	4125.162	2881.70
Sep	3	4084.099	2847.45
	17	4149.562	2925.09

Bank Loans and Credit

Billions of dollars, seasonally adjusted

		Bank Credit	Loans and Leases	C&I Loans (All)	C&I Loans (Large)	Comm. Paper (sa)	Total Borrowings
Aug	13	10588.6	7753.3	1748.8	933.4	272.6	0.268
	20	10622.2	7792.0	1750.6	935.1	278.4	0.278
	27	10623.0	7788.4	1748.2	935.3	286.9	0.292
Sep	3	10616.2	7781.3	1753.9	939.8	288.7	0.299
	10	10614.6	7767.3	1752.7	938.5	291.9	0.291
	17	288.8	0.302
	24	289.1	0.330

Exchange Rates

		Major Exchange Rate Index	Broad Exchange Rate Index	Exchange Rate: Euro/\$	Exchange Rate: Yen/\$
Aug	8	77.5	103.3	0.747	102.3
	15	77.5	103.1	0.748	102.3
	22	77.9	103.2	0.752	103.3
	29	78.2	103.4	0.759	104.0
Sep	5	78.7	103.8	0.767	105.0
	12	79.6	104.5	0.773	106.6
	19	79.7	104.8	0.774	107.9

Definitions

M1: The sum of currency held outside the vaults of depository institutions, Federal Reserve Banks, and the U.S. Treasury; travelers checks; and demand and other checkable deposits issued by financial institutions (except demand deposits due to the Treasury and depository institutions), minus cash items in process of collection and Federal Reserve float.

M2: M1 plus savings deposits (including money market deposit accounts) and small-denomination (less than \$100,000) time deposits issued by financial institutions; and shares in retail money market mutual funds (funds with initial investments of less than \$50,000), net of retirement accounts.

M3: M2 plus large-denomination (\$100,000 or more) time deposits; repurchase agreements issued by depository institutions; Eurodollar deposits, specifically, dollar-denominated deposits due to nonbank U.S. addresses held at foreign offices of U.S. banks worldwide and all banking offices in Canada and the United Kingdom; and institutional money market mutual funds (funds with initial investments of \$50,000 or more).

Notes

Cover Page: Economic forecasts are median responses from the Thomson Reuters Weekly Economic Survey, which is sent out to 20 to 25 Wall Street economists each week (usually on Tuesday). These forecasts are released on Friday—at which time, Thursday's *USFD* cover page will be updated.

Page 3: Adjusted Monetary Base equals the sum of currency in circulation outside Federal Reserve Banks and the U.S. Treasury, deposits of depository financial institutions at Federal Reserve Banks, and an adjustment for the effects of changes in statutory reserve requirements on the quantity of base money held by depositories. This series is a spliced chain index; see Anderson and Rasche (1996a, 1996b, 2001, 2003).

Page 4: Adjusted Reserves is defined as the sum of vault cash and Federal Reserve Bank deposits held by depository institutions and an adjustment for the effects of changes in statutory reserve requirements on the quantity of base money held by depositories. This series, a spliced chain index, is numerically larger than the Board of Governors' measure, which excludes vault cash not used to satisfy statutory reserve requirements and Federal Reserve Bank deposits used to satisfy required clearing balance contracts; see Anderson and Rasche (1996a, 2001, 2003).

Page 5: MZM includes the zero maturity, or immediately available, components of M3. MZM equals M2 minus small-denomination time deposits, plus institutional money market mutual funds (that is, the money market mutual funds included in M3 but excluded from M2). The label MZM, or "Money, Zero Maturity," was coined by William Poole (1991) for this aggregate, proposed earlier by Motley (1988). Readers are cautioned that since early 1994 the level and growth of M1 have been depressed by retail sweep programs that reclassify transactions deposits (demand deposits and other checkable deposits) as savings deposits overnight, thereby reducing banks' required reserves; see Anderson and Rasche (2001) and research.stlouisfed.org/aggreg/swdata.html.

Page 7: The asset groups are aggregates of the following categories on the H.4.1: **Short-term lending to financial firms and markets** is the sum of repurchase agreements, term auction credit, commercial paper funding facility, central bank liquidity swaps, money market investor funding facility, other loans (less AIG loan), and other assets.

Rescue operations is the sum of credit extended to AIG, and net portfolio holdings of Maiden Lanes I, II, III, and preferred interests in AIA Aurora and ALICO Holdings. **Operations focused on long term credit conditions** is the sum of Federal Reserve agency obligations held outright, mortgage backed securities, the term asset-backed securities loan facility (TALF), and the TALF LLC. **Traditional portfolio** is the sum of treasury securities, gold certificate account, special drawing rights, coin, items in process of collection, and bank premises. On the liability side, **Source base** is the sum of deposits of depository institutions and Federal Reserve notes. **Treasury financing account** appears on the H.4.1. **Traditional liabilities and capital account** is the sum of deferred availability cash items, foreign official account deposits, U.S. Treasury general account, accrued dividends, reverse repurchase agreements, other deposits, and capital accounts. H.4.1 data are not seasonally adjusted.

Page 8: Federal Reserve Holdings of U.S. Treasury Securities include nominal securities, inflation-indexed securities, and the compensation that adjusts for the effect of inflation on the original face value of inflation-indexed securities (inflation compensation). **Term Deposits Held by Depository Institutions** are interest-bearing deposits with a specific maturity date offered by the Federal Reserve Banks. For more information on the Term Deposit Facility, see http://www.frbservices.org/centralbank/term_deposit_facility.html.

Page 9: Reverse repurchase (repo) agreements are domestic open market operations through which eligible financial market counterparties lend cash to the Federal Reserve Banks in exchange for securities on the Federal Reserve's balance sheet. **Federal Reserve Earnings Remitted to the U.S. Treasury** is the interest income earned on the Fed's holdings of domestic securities, plus other earnings, less direct interest expenses. Included in the latter is the interest paid on reverse repos noted above. For more information on both of these series, see *Domestic Open Market Operations During 2013* (<http://www.newyorkfed.org/markets/omo/omo2013.pdf>). Federal Reserve Earnings are derived from the *Daily Treasury Statement* (<http://www.fms.treas.gov/dts/index.html>).

Page 10: Current data appear in the Federal Reserve Board's H.4.1 release. For more information, see <http://www.federalreserve.gov/newsevents/recentactions.htm>.

Page 11: Current data appear in the Federal Reserve Board's H.15 release, except for the **Intended Federal Funds Rate**. Federal Funds Rate represents seven-day averages for the week ending two days earlier than the date shown in the release.

Page 12: Yields on the 10-year U.S. Treasury security, Aaa- and Baa-rated corporate bonds, and the interest rate on 3-year conforming mortgages appear in the Federal Reserve Board's H.15 release. The interest rates on jumbo mortgages (typically, mortgages in excess of \$417,000) are listed in the *Wall Street Journal*.

Page 13: Inflation-Indexed Treasury Yields are the most recently issued inflation-indexed bonds of 5-, 10-, and 30-year original maturities. **Inflation-Indexed Treasury Yield Spreads** equal the difference between yields on the most recently issued inflation-indexed bonds and the unadjusted **Treasury Note Yields** of similar maturities.

Page 14: Rates on Federal Funds Futures Contracts trace through time the yield on three specific contracts. **Rates on Federal Funds Futures on Selected Dates** displays a single day's snapshot of yields for contracts expiring in the months shown on the horizontal axis.

Page 16: Crude Oil (West Texas intermediate) spot and futures prices are listed in the *Wall Street Journal*. **Spot Prices** are weekly averages of daily prices; **Futures Prices** are usually taken on Wednesday.

Page 17: **Natural Gas** (Henry Hub) spot prices are from the U.S. Energy Information Administration (EIA). **Futures prices** are listed in the Wall Street Journal. **Spot prices** are weekly averages of daily prices; Futures prices are usually taken on Wednesday.

Page 18: Data appear in the Federal Reserve Board's H.10 release. The **Major Index** comprises 7 currencies. The **Broad Index** comprises the **Major Index** plus 19 additional currencies. Further details may be found at www.federalreserve.gov/releases/h10/summary/.

Page 19: Data appear in the Federal Reserve Board's H.6 release. **Savings Deposits** is the sum of money market deposit accounts and passbook and statement savings. **Small Time Deposits** have a minimum initial maturity of 7 days. Savings deposits and small time deposits are at all depository institutions.

Page 20: Data appear in the Federal Reserve Board's H.6 and H.4.1 releases. **Retail Money Funds** are included in M2. **Institutional Money Funds** are not part of M2; they used to be included in M3, which was discontinued as of March 23, 2006. See www.federalreserve.gov/releases/h6/discm3.htm.

Total Borrowings include loans to depository institutions for (i) primary, secondary, and seasonal credit and (ii) primary dealer and other broker-dealer credit. This category also includes the asset-backed commercial paper money market mutual fund liquidity facility, credit extended to American International Group, Inc., term asset-backed securities loan facility, and other credit extensions. Term auction credit is excluded. Data and recent information regarding Federal Reserve lending programs appear in the Federal Reserve Board's H.4.1 release at <http://www.federalreserve.gov/releases/h41/Current/>.

Page 21: Data appear in the Federal Reserve Board's H.8 release. **Bank Loans and Credit** include foreign-related institutions. **Bank Credit** includes loans and leases and securities. **All Banks** includes foreign-related institutions. **Large Banks** are domestically chartered banks (adjusted for mergers) and report on a weekly basis.

Page 22: Current data appear at www.federalreserve.gov/releases/cp/outstandings.htm.

Page 23: **Treasury Security** yields are Treasury constant maturities as reported in the Board of Governors of the Federal Reserve System's H.15 release.

The **3-Month Treasury Bill** yield is the secondary market yield from the H.15 release. **Federal Funds** represents seven-day averages for the week ending two days earlier than the date shown in the table.

Municipal Bonds represents Bond Buyer's Average Index of 20 municipal bonds, Thursday data.

Sources

Board of Governors of the Federal Reserve System

Monetary aggregates and components: H.6 release. Bank credit: H.8 release. Total Borrowings and Federal Reserve Balance Sheet Items: H.4.1 release. Interest rates: H.15 release. Exchange rates: H.10 release. Commercial paper: Board of Governors web site.

Chicago Board of Trade

Federal funds futures contract.

Dow Jones Indexes

Dow Jones Industrial Average.

Federal Reserve Bank of St. Louis

Adjusted monetary base, adjusted reserves, and MZM.

NASDAQ Stock Market, Incorporated
NASDAQ Composite®.

S&P Dow Jones Indices LLC

Copyright © 2014, S&P Dow Jones Indices LLC. All rights reserved. Reproduction of S&P500 and Dow Jones Industrial Average in any form is prohibited except with the prior written permission of S&P Dow Jones Indices LLC ("S&P"). S&P does not guarantee the accuracy, adequacy, completeness or availability of any information and is not responsible for any errors or omissions, regardless of the cause or for the results obtained from the use of such information. S&P DISCLAIMS ANY AND ALL EXPRESS OR IMPLIED WARRANTIES, INCLUDING, BUT NOT LIMITED TO, ANY WARRANTIES OF MERCHANTABILITY OR FITNESS FOR A PARTICULAR PURPOSE OR USE. In no event shall S&P be liable for any direct, indirect, special or consequential damages, costs, expenses, legal fees, or losses (including lost income or lost profit and opportunity costs) in connection with subscriber's or others' use of S&P 500 and Dow Jones Industrial Average.

Permission to reproduce this series can be requested from index_services@spdji.com. More contact details are available from <http://us.spindices.com/contact-us/>, including phone numbers for all of its regional offices.

U.S. Department of the Treasury

U.S. inflation-indexed security yields.

U.S. Energy Information Administration (EIA)

Natural gas (Henry Hub) spot prices.

Wall Street Journal

Jumbo mortgage interest rates, oil (West Texas intermediate) spot and futures prices, and natural gas (Henry Hub) futures prices.

Wilshire Associates Incorporated (www.wilshire.com)

Wilshire 5000®.

References

Anderson, Richard G. and Robert H. Rasche (1996a). "A Revised Measure of the St. Louis Adjusted Monetary Base," Federal Reserve Bank of St. Louis *Review*, March/April, 78(2), pp. 3-13.

____ and ____ (1996b). "Measuring the Adjusted Monetary Base in an Era of Financial Change," Federal Reserve Bank of St. Louis *Review*, November/ December, 78(6), pp. 3-37.

____ and ____ (2001). "Retail Sweep Programs and Bank Reserves, 1994-1999," Federal Reserve Bank of St. Louis *Review*, January/February, pp. 51-72.

____ and ____ , with Jeffrey Loesel (2003). "A Reconstruction of the Federal Reserve Bank of St. Louis Adjusted Monetary Base and Reserves," Federal Reserve Bank of St. Louis *Review*, September/October, 85(5), pp. 39-70.

Motley, Brian (1988). "Should M2 Be Redefined?" Federal Reserve Bank of San Francisco *Economic Review*, Winter, pp. 33-51.

Poole, William (1991). Statement before the Subcommittee on Domestic Monetary Policy of the Committee on Banking, Finance and Urban Affairs, U.S. House of Representatives, November 6, 1991. Government Printing Office, Serial No. 102-82.

Note: Articles from this Bank's *Review* are available on the Internet at research.stlouisfed.org/publications/review/.