



# Calendar of Releases

*Titles for the current week are links to their respective releases.*

MONDAY*	TUESDAY	WEDNESDAY	THURSDAY*	FRIDAY
<b>August 25</b> <b>Existing Home Sales (Jul)</b> A: 5.00M PF: 4.94M	<b>August 26</b> <b>New Home Sales (Jul)</b> A: 515K PF: 525K  <b>FOMC Minutes</b> (previous meeting)	<b>August 27</b> <b>Durable Goods (Jul)</b> A: 1.3% PF: 0.1%	<b>August 28</b> <b>Initial Claims (8/23)</b> A: 425K PF: 427K  <b>GDP (Q2)</b> A: 3.3% PF: 2.7%  <b>Corporate Profits (Q2)</b>	<b>August 29</b> <b>Personal Income (Jul)</b> A: -0.7% PF: -0.1%  <b>Consumption (Jul)</b> A: 0.2% PF: 0.2%  <b>Core PCE (Jul)</b> A: 0.3% PF: 0.3%
<b>September 1</b>	<b>September 2</b> <b>ISM Index (Aug)</b> CF: 49.9 PF: 49.5  <b>Construct Spending (Jul)</b> CF: -0.3% PF: -0.5%  <b>Latest Issue Review</b>	<b>September 3</b> <b>Factory Orders (Jul)</b> CF: 0.8% PF: 0.1%  <b>Current Economic Conditions (Beige Book)</b>	<b>September 4</b> <b>Initial Claims (8/30)</b> CF: 420K PF: 435K  <b>Productivity (Q2)</b> CF: 3.3% PF: 3.1%  <b>Unit Labor Costs (Q2)</b> CF: -0.3% PF: 0.3%  <b>ISM Non Mfg Index (Aug)</b> CF: 50.0 PF: 49.0	<b>September 5</b> <b>Nonfarm Payrolls (Aug)</b> CF: -75K PF: -75K  <b>Unemployment Rate (Aug)</b> CF: 5.8% PF: 5.8%
<b>September 8</b> <b>Consumer Credit (Jul)</b> CF: \$5.8B  <b>Latest Issue</b> <b>National Economic Trends</b>	<b>September 9</b>	<b>September 10</b>	<b>September 11</b> <b>Initial Claims (9/6)</b> CF: 423K  <b>International Trade (Jul)</b> CF: -\$57.9B  <b>Import Prices (Aug)</b> CF: -0.9%  <b>Treasury Budget (Aug)</b> CF: -\$108.0B  <b>Quarterly Services (Q2)</b>	<b>September 12</b> <b>Retail Sales (Aug)</b> CF: 0.0%  <b>Business Inventories (Jul)</b> CF: 0.5%  <b>PPI (Aug)</b> CF: -0.3%  <b>Core PPI (Aug)</b> CF: 0.1%

DEFINITIONS: A, actual value; PF, previous week's forecast; CF, current week's forecast; K, thousand; M, million; B, billion.

\*The Board of Governors of the Federal Reserve System provides H.3, H.4.1, and H.6 releases each Thursday and H.10 and H.15 releases each Monday.

Forecast data are from Thomson Financial. ©Thomson Financial, 2008. All Rights Reserved. Use, duplication, or sale of this service or the data contained herein, except as described in the Federal Reserve Bank of St. Louis Subscription Agreement, is strictly prohibited.

# Contents

---

---

## Page

3	Adjusted Monetary Base
4	Adjusted Reserves
5	MZM
6	M2
7	Yields on Selected Securities
8	Yields on Nominal and Inflation-Indexed Treasury Securities
9	Federal Funds Futures Market
10	Equity Price Indices
11	Crude Oil Prices
12	Natural Gas Prices
13	Exchange Rates
14	Currency, Savings, and Small Time Deposits
15	Institutional and Retail Money Funds, and Borrowings from Federal Reserve Banks
16	Selected Federal Reserve Balance Sheet Items
17	Bank Loans
18	Commercial Paper
19	Reference Tables
20	Notes

## Conventions used in this publication:

1. Unless otherwise indicated, figure and table data are weekly and seasonally adjusted.
2. For pages 7, 10, 11 (top chart), 12 (top chart), 13, and 19 (top and bottom right tables), the last observation is a daily average that incorporates all available data at the time of publication, which usually includes observations for the first three trading days of the week (Monday through Wednesday). The previous observations signify that week's average.

We welcome your comments addressed to:

Editor, *U.S. Financial Data*  
Research Division  
Federal Reserve Bank of St. Louis  
P.O. Box 442  
St. Louis, MO 63166-0442

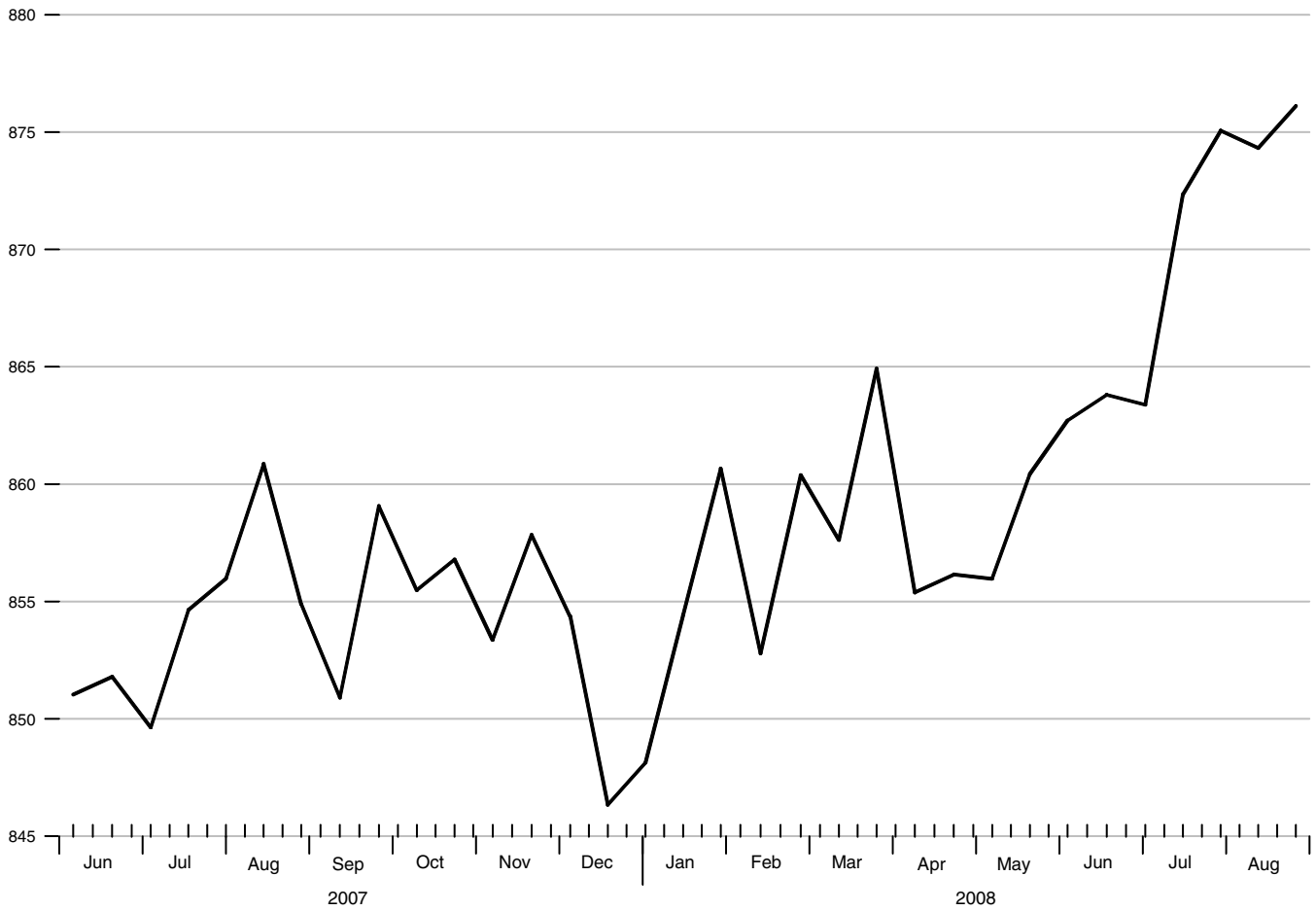
or to:

[stlsFRED@stls.frb.org](mailto:stlsFRED@stls.frb.org)

### Adjusted Monetary Base

Averages of Daily Figures, Seasonally Adjusted

Billions of dollars



### Adjusted Monetary Base

To the average of  
two maintenance  
periods ending:

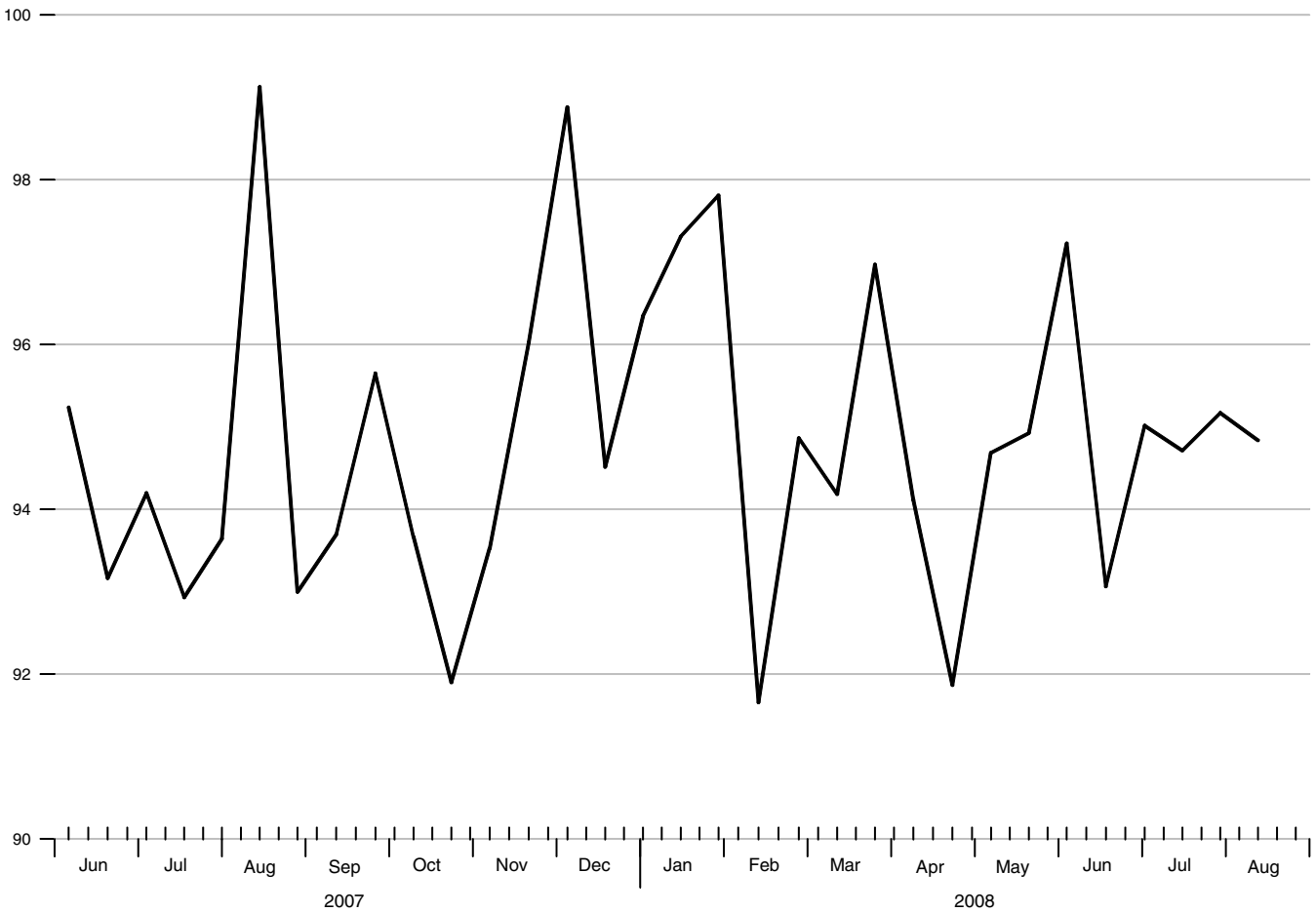
Compounded annual rates of change, average of two maintenance periods ending:

	08/29/07	11/21/07	01/30/08	02/27/08	03/26/08	04/23/08	06/04/08	07/02/08
01/30/08	-0.1							
02/27/08	-0.3	0.4						
03/26/08	0.7	1.9	2.9					
04/23/08	-0.4	0.0	-0.9	-0.6				
06/04/08	0.6	1.3	1.4	2.2	0.2			
07/02/08	0.8	1.5	1.7	2.4	1.0	4.9		
07/30/08	2.0	3.1	3.8	4.8	4.2	8.0	9.5	
08/27/08	2.0	3.0	3.6	4.4	3.9	6.7	7.1	9.1

**Adjusted Reserves**

Seasonally Adjusted

Billions of dollars



**Adjusted Reserves**

To the average of  
two maintenance  
periods ending:

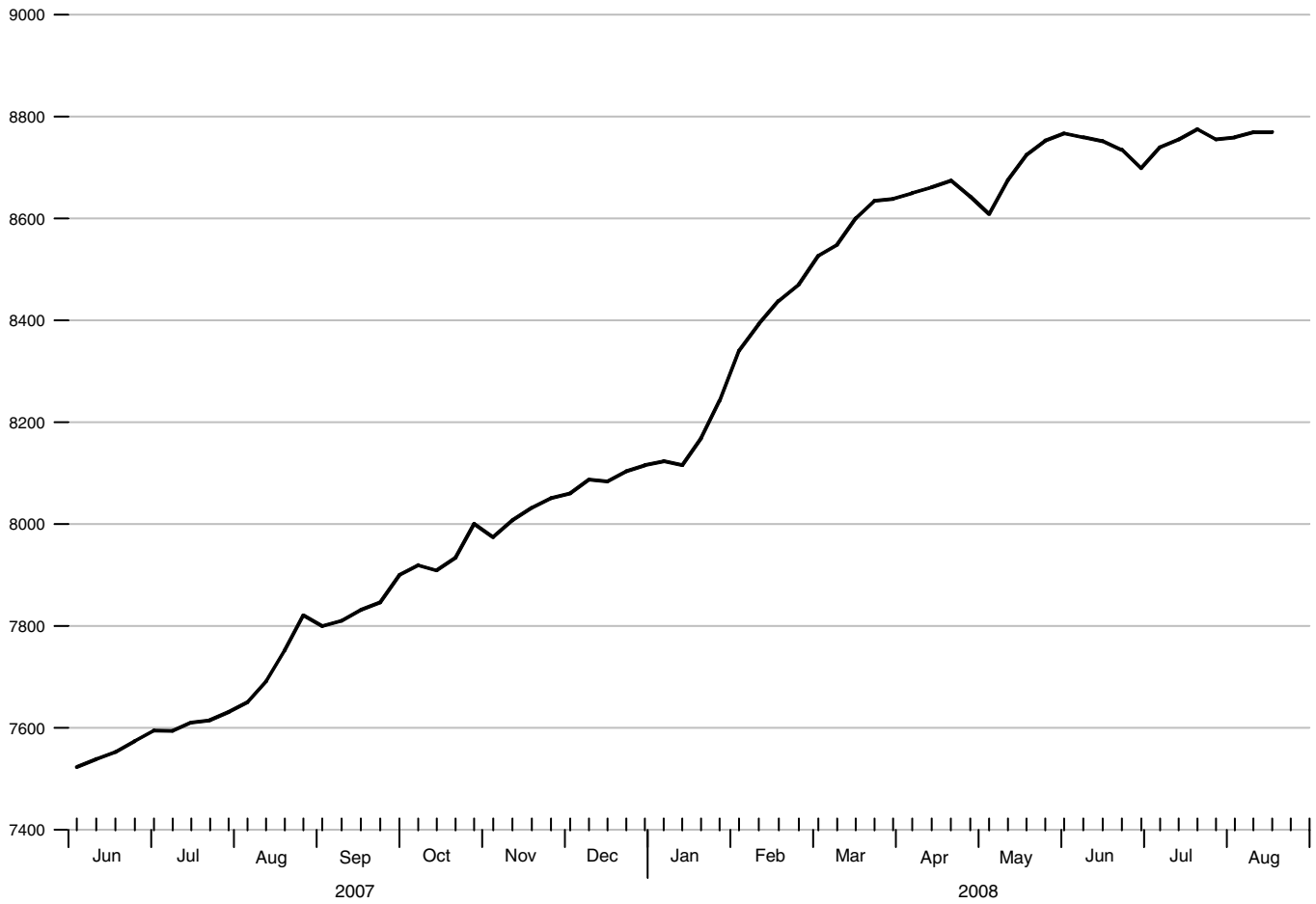
Compounded annual rates of change, average of two maintenance periods ending:

	08/15/07	11/07/07	01/16/08	02/13/08	03/12/08	04/09/08	05/21/08	06/18/08
01/16/08	1.1							
02/13/08	-3.4	8.3						
03/12/08	-3.3	5.8	-14.5					
04/09/08	-1.3	7.4	-5.6	5.7				
05/21/08	-2.1	4.2	-5.9	0.3	1.6			
06/18/08	-1.5	4.3	-4.1	1.3	2.5	-2.1		
07/16/08	-1.7	3.4	-4.0	0.3	1.0	-2.6	0.4	
08/13/08	-1.4	3.2	-3.2	0.6	1.2	-1.6	0.9	-1.0

**MZM**

Averages of Daily Figures, Seasonally Adjusted

Billions of dollars



**MZM**

To the average  
of four weeks  
ending:

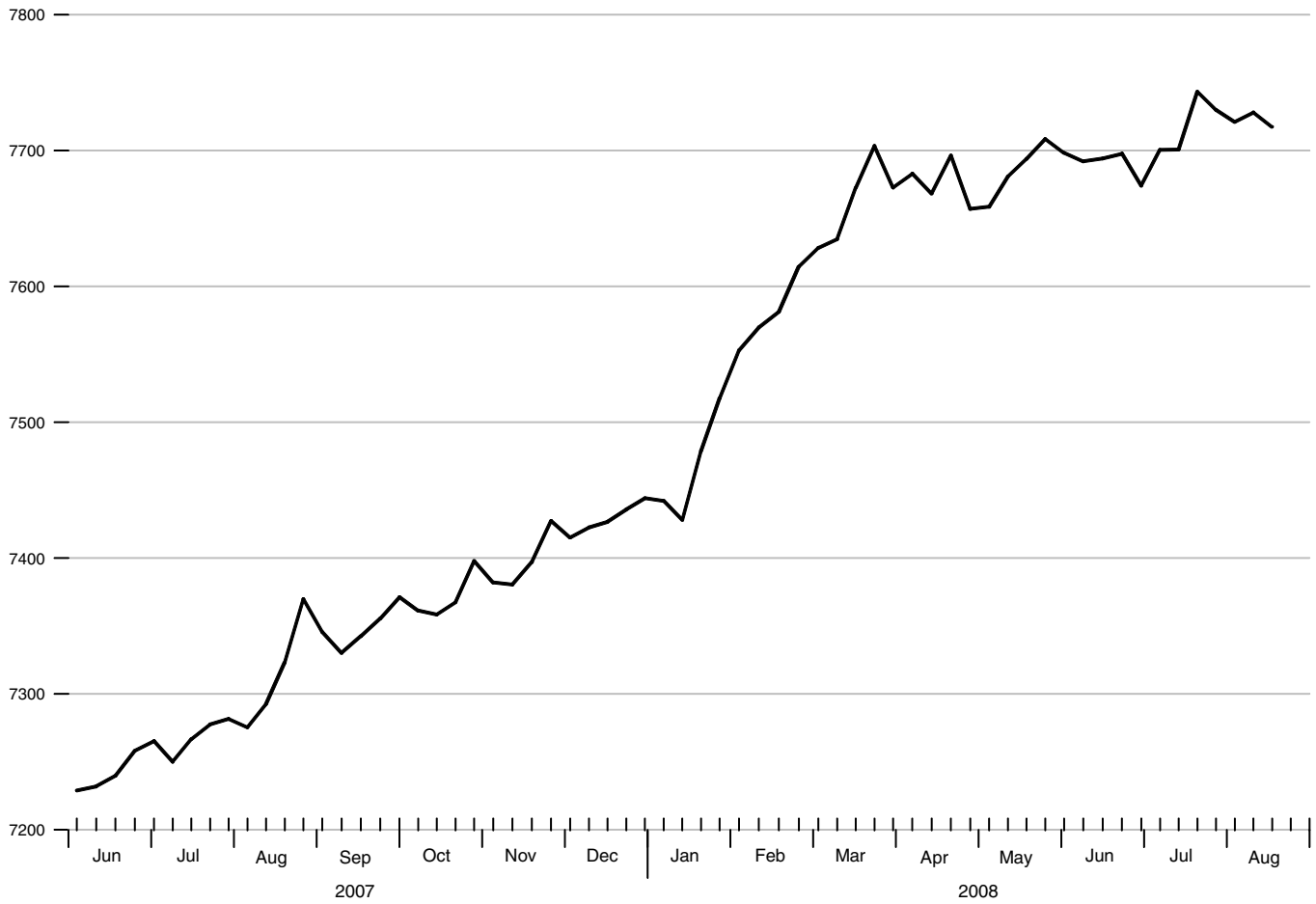
Compounded annual rates of change, average of four weeks ending:

	08/20/07	11/12/07	01/21/08	02/18/08	03/17/08	04/14/08	05/26/08	06/23/08
01/21/08	14.4							
02/18/08	18.3	18.6						
03/17/08	20.1	21.5	37.2					
04/14/08	19.8	20.9	30.5	25.1				
05/26/08	17.4	17.2	21.2	15.8	9.7			
06/23/08	16.7	16.2	19.1	14.5	9.8	6.6		
07/21/08	15.1	14.1	15.6	11.4	7.1	4.2	3.9	
08/18/08	14.1	13.0	13.9	10.1	6.4	4.0	3.7	0.8

**M2**

Averages of Daily Figures, Seasonally Adjusted

Billions of dollars



**M2**

To the average  
of four weeks  
ending:

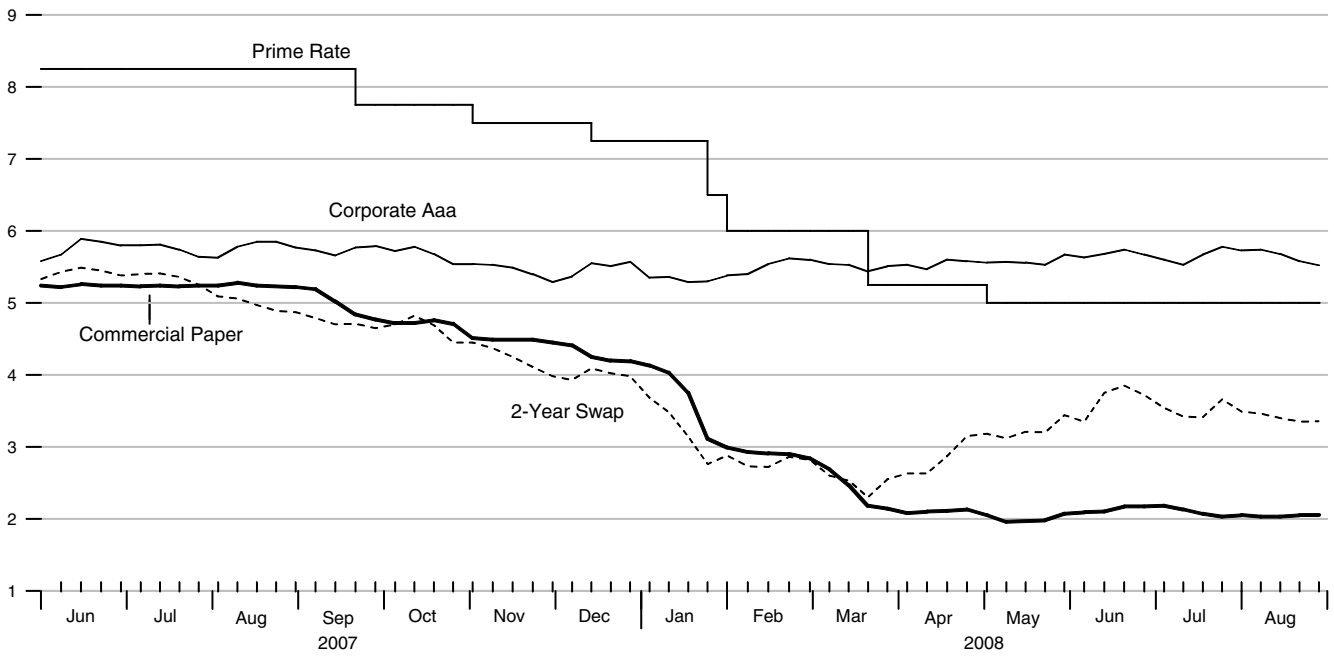
Compounded annual rates of change, average of four weeks ending:

	08/20/07	11/12/07	01/21/08	02/18/08	03/17/08	04/14/08	05/26/08	06/23/08
01/21/08	5.1							
02/18/08	7.3	9.0						
03/17/08	8.3	10.3	17.7					
04/14/08	8.3	9.9	14.3	11.4				
05/26/08	7.0	7.8	9.5	6.5	3.3			
06/23/08	6.6	7.0	8.0	5.5	2.9	0.9		
07/21/08	6.1	6.4	7.0	4.7	2.6	1.1	1.6	
08/18/08	5.9	6.1	6.5	4.5	2.7	1.6	2.2	2.4

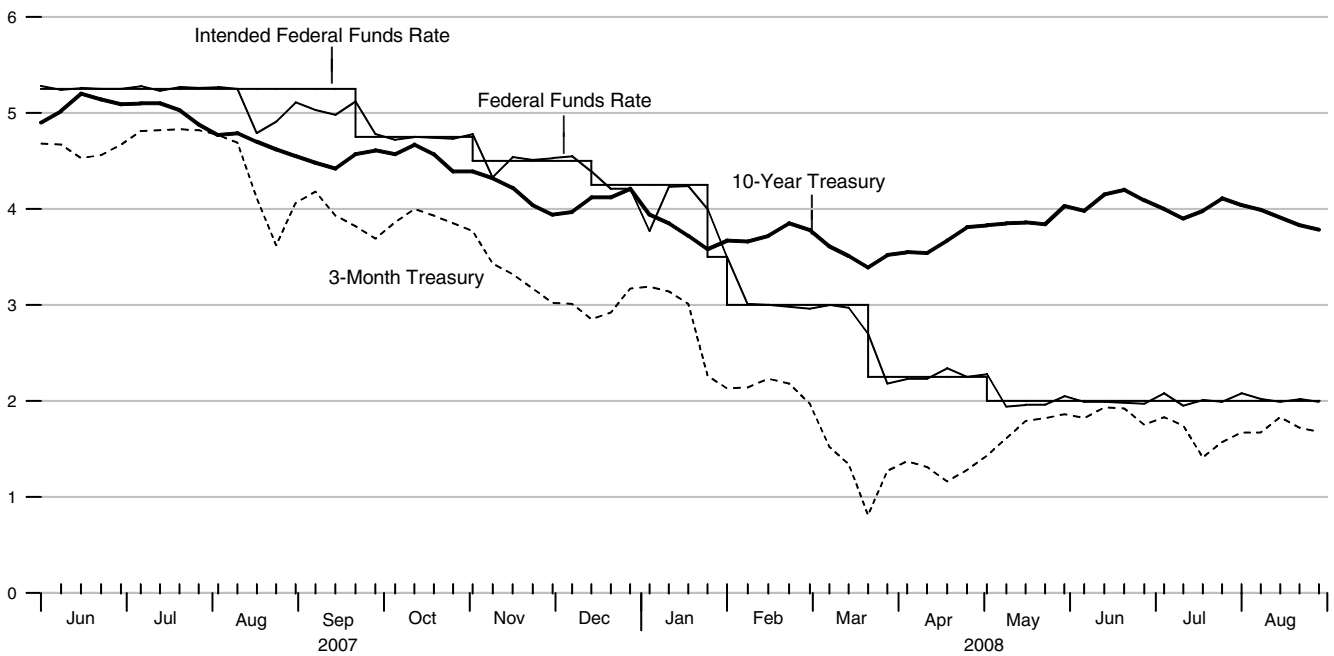
### Yields on Selected Securities

Averages of Daily Figures

Percent



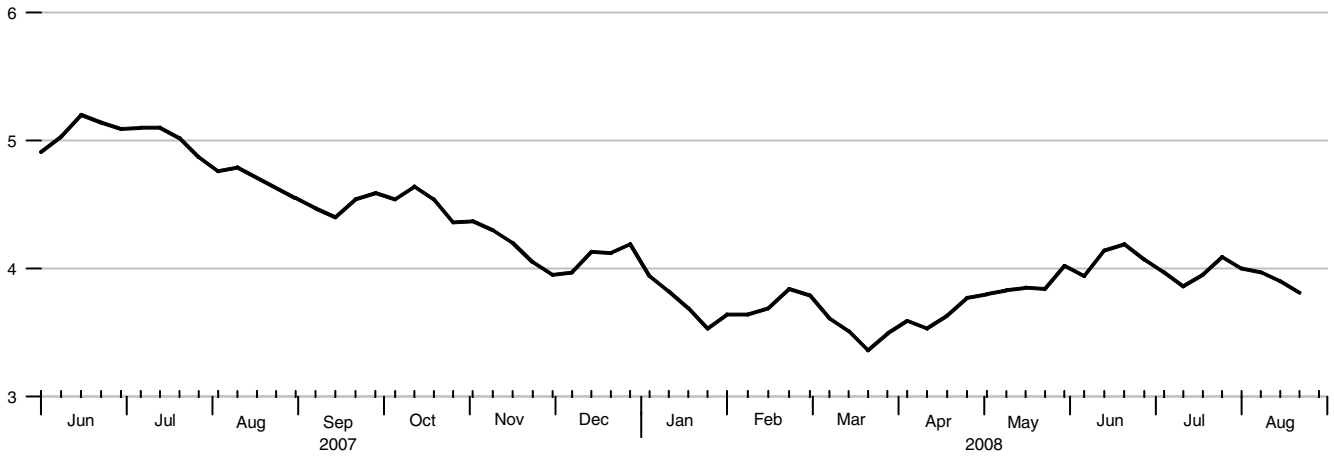
Percent



### 10-Year Treasury Note Yield

Averages of Daily Figures

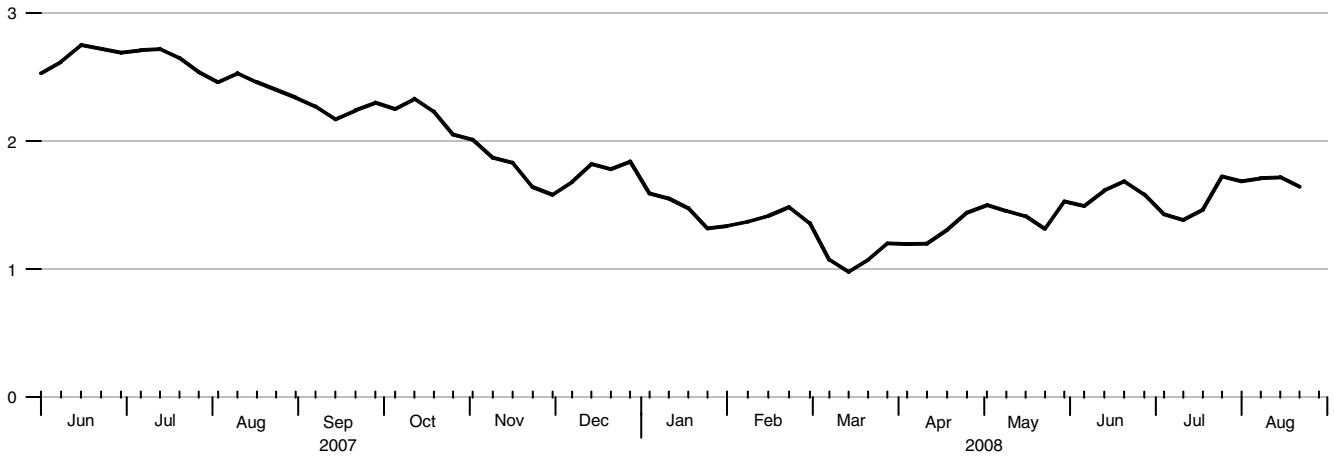
Percent



### 10-Year Inflation-Indexed Treasury Yield

Averages of Daily Figures

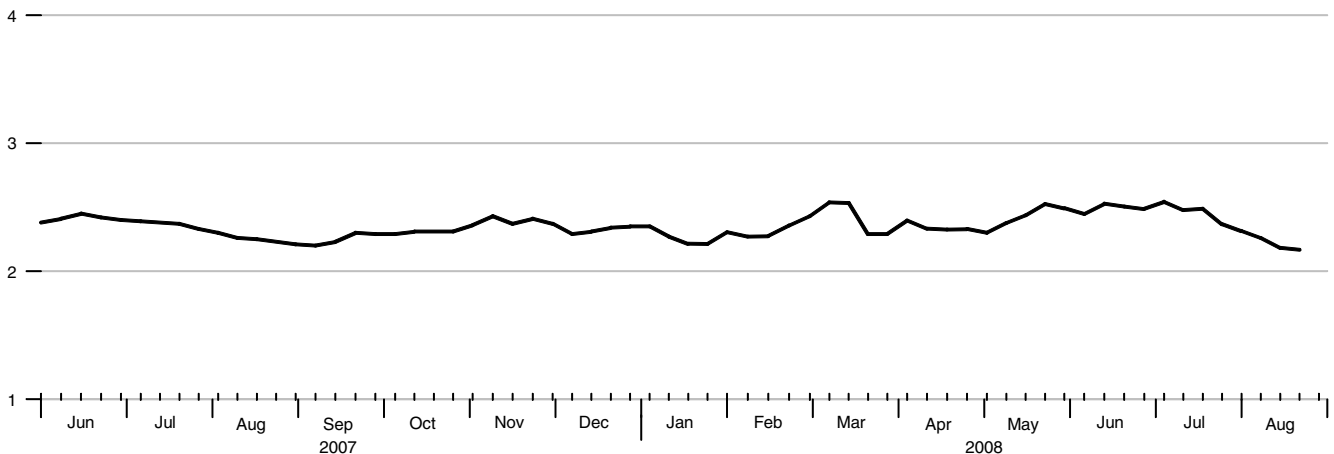
Percent



### 10-Year Inflation-Indexed Treasury Yield Spread

Averages of Daily Figures

Percent

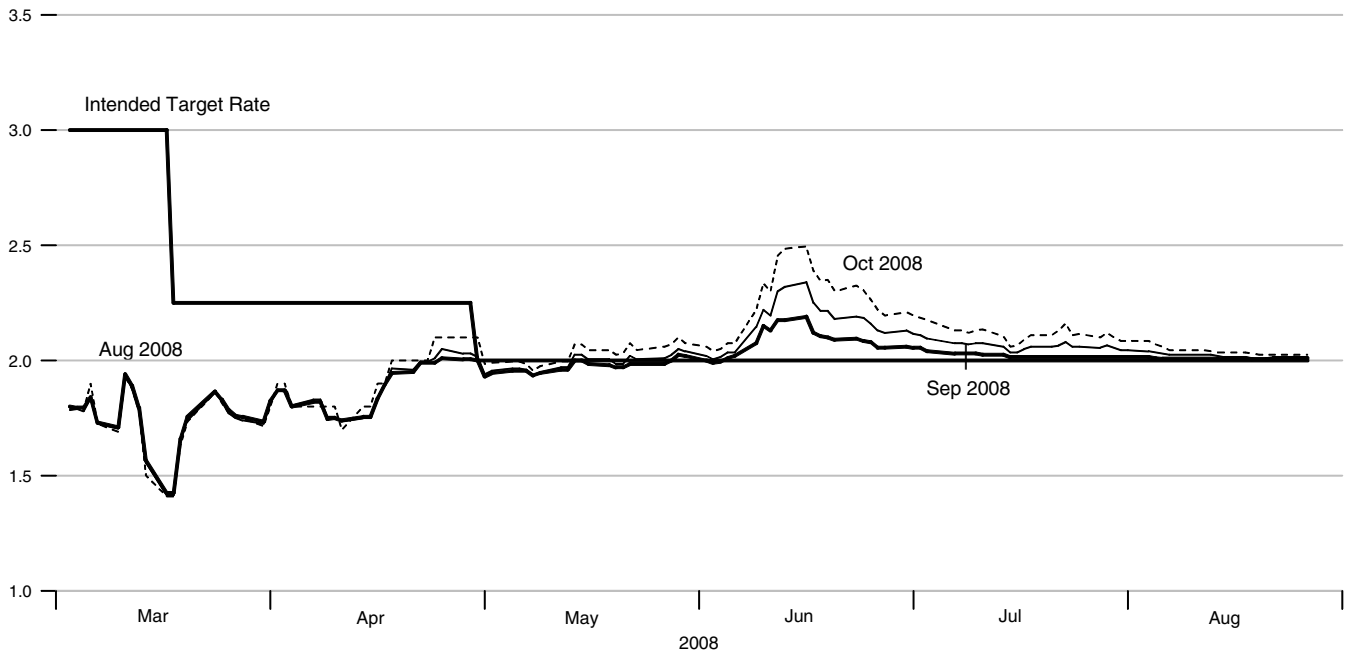




### Rates on Federal Funds Futures Contracts

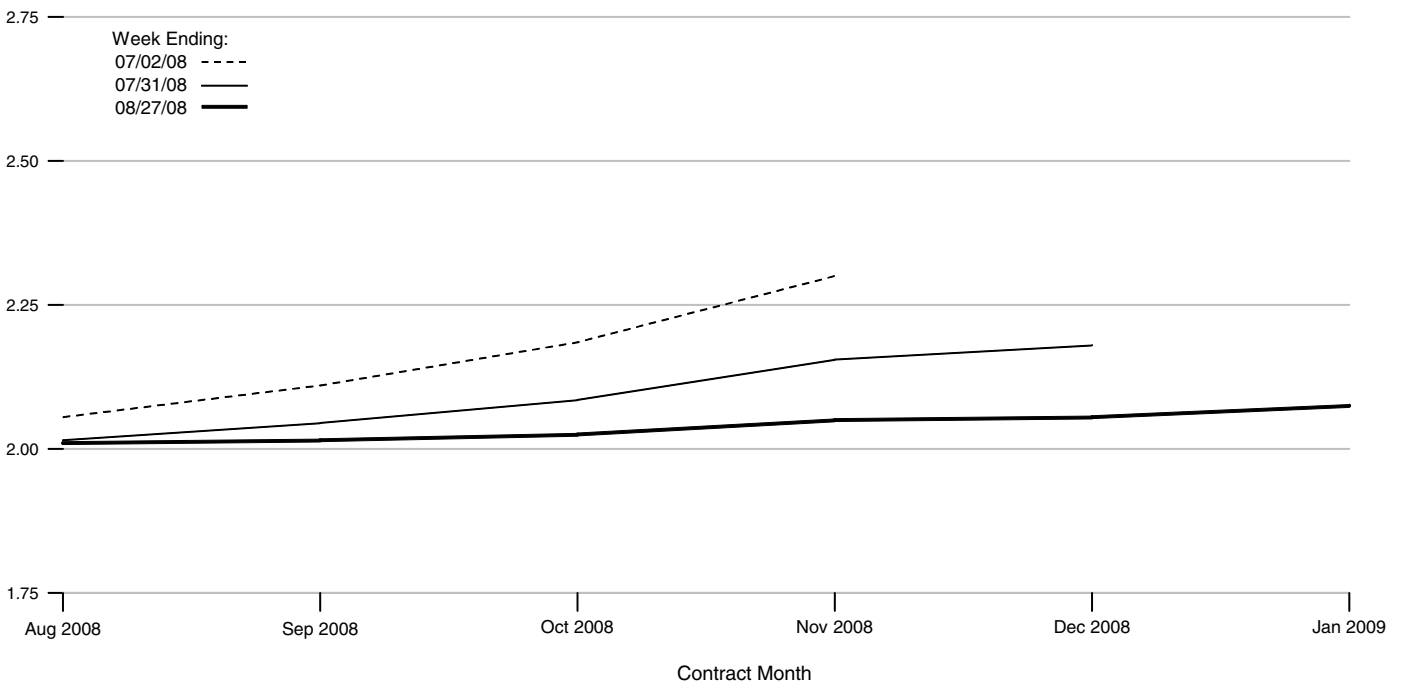
Daily Data

Percent



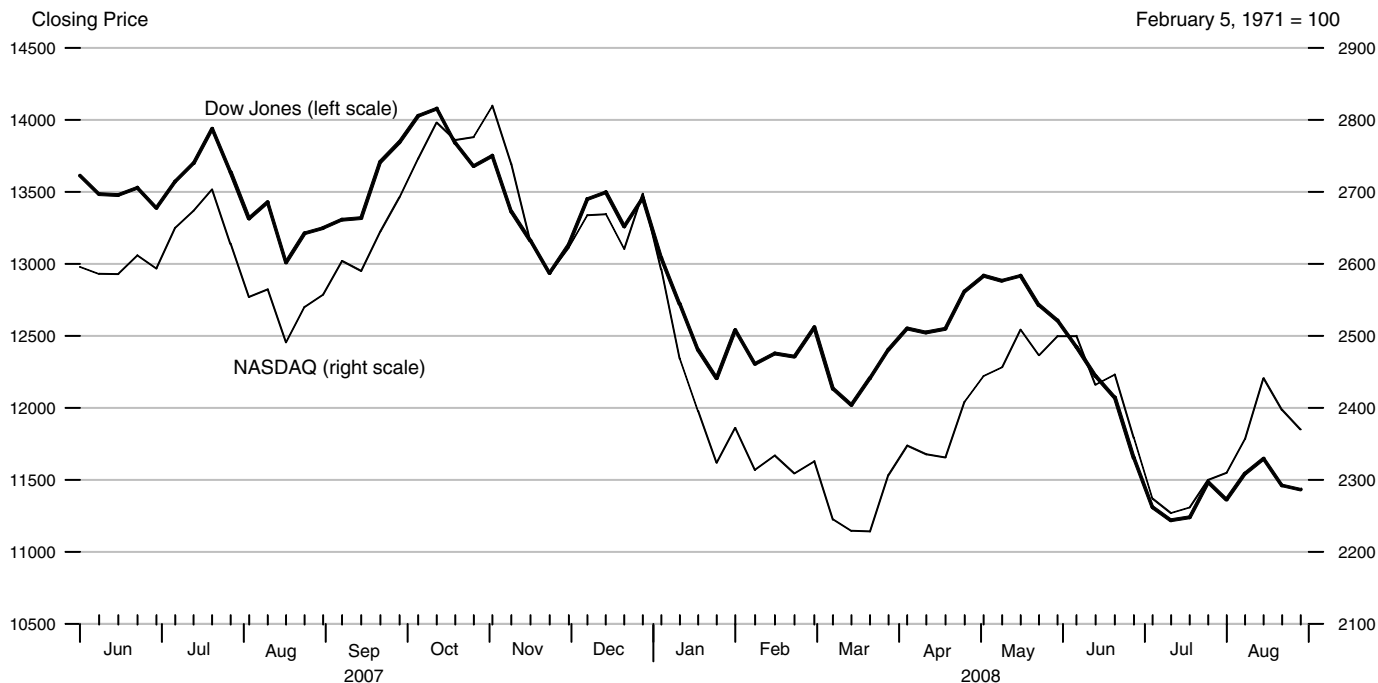
### Rates on Federal Funds Futures on Selected Dates

Percent



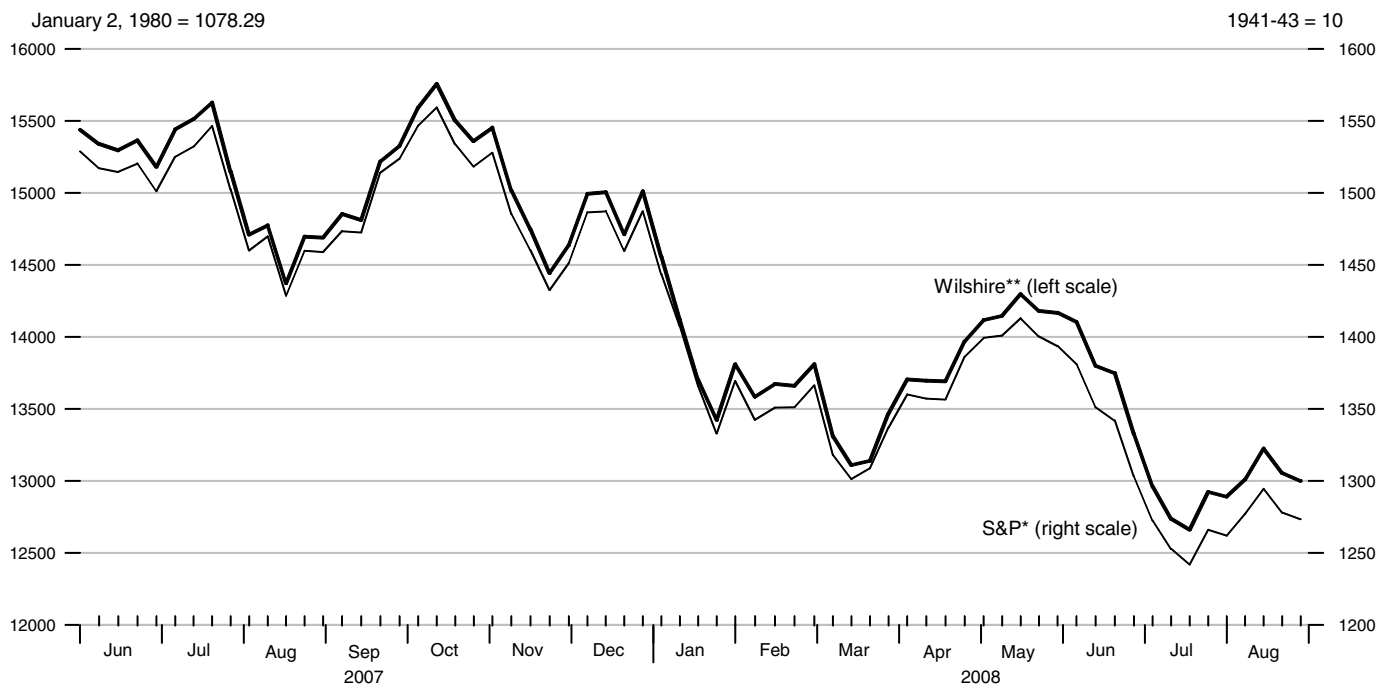
### Dow Jones Industrial Average and NASDAQ Composite®

Averages of Daily Figures



### Wilshire 5000® and Standard & Poor's 500

Averages of Daily Figures



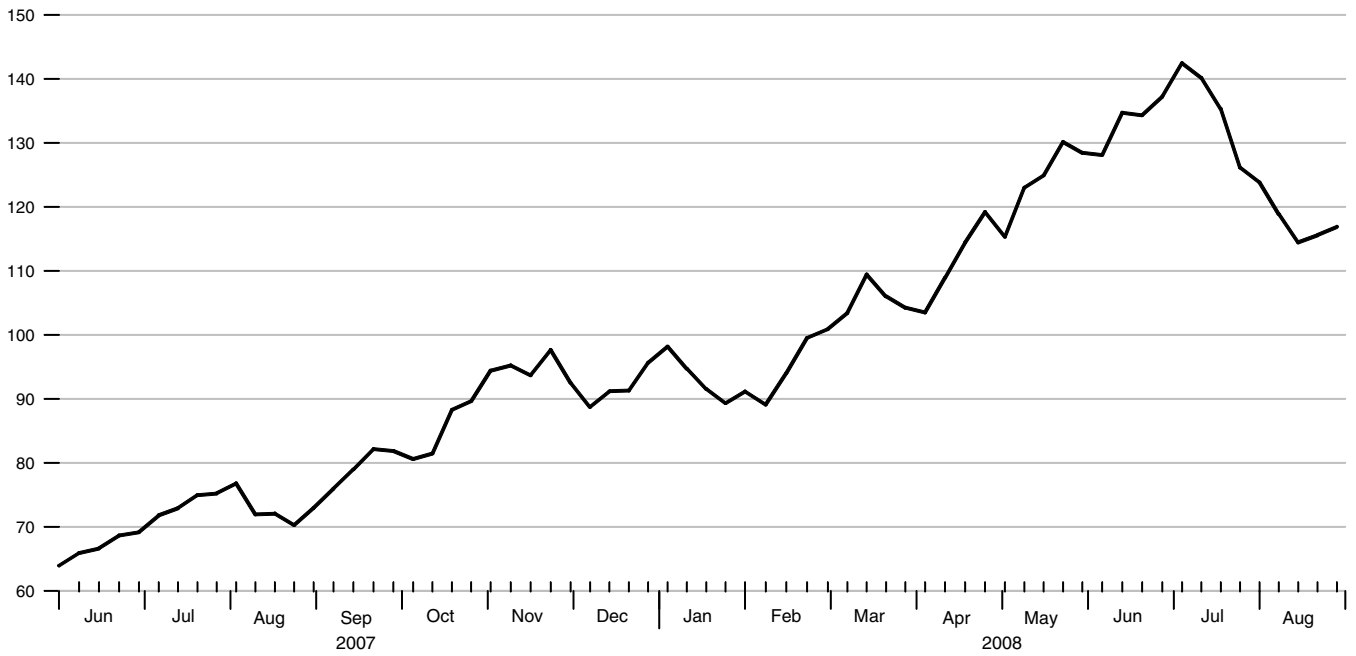
\*Copyright © 2003 The McGraw-Hill Companies, Inc. Standard & Poor's including its subsidiary corporations ("S&P") is a division of The McGraw-Hill Companies, Inc. Reproduction of this data in any form is prohibited without S&P's prior written permission.

\*\*Source: Wilshire Associates Incorporated, [www.wilshire.com](http://www.wilshire.com)

### Crude Oil Spot Prices

West Texas Intermediate, Averages of Daily Figures

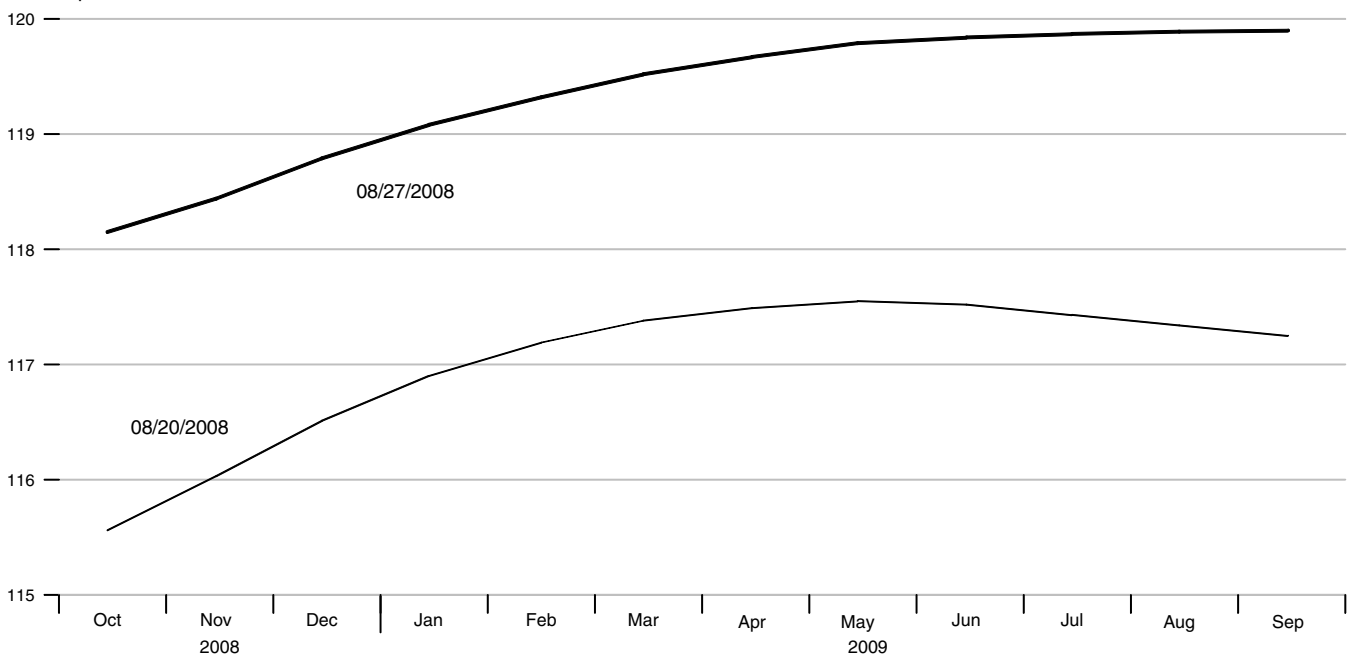
Dollars per barrel



### Crude Oil Futures Prices

West Texas Intermediate

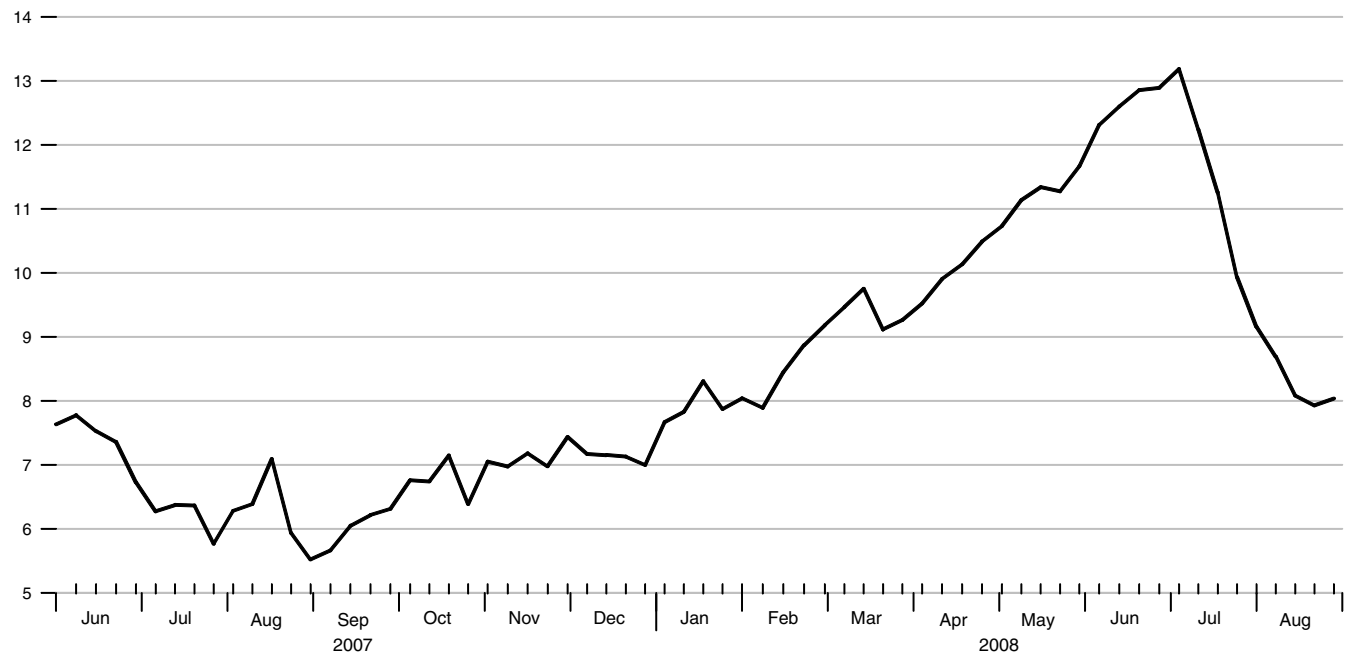
Dollars per barrel



### Natural Gas Spot Prices

Henry Hub, Averages of Daily Figures

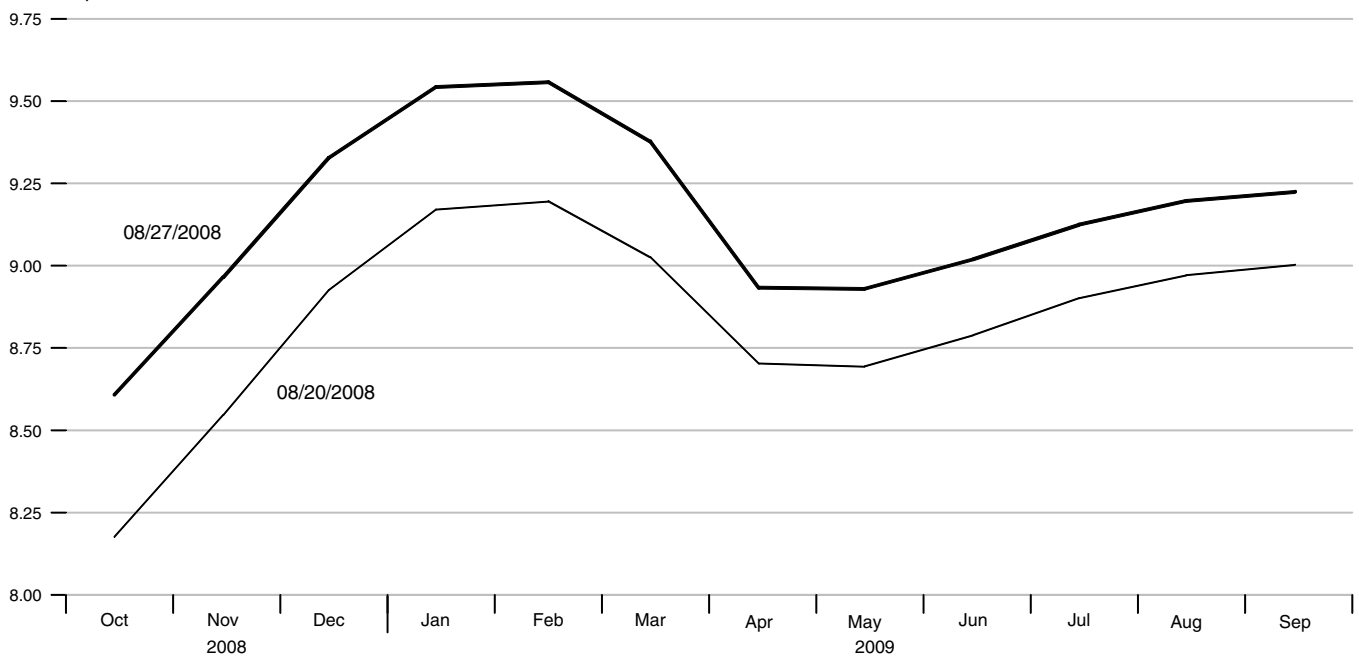
Dollars per million btu



### Natural Gas Futures Prices

Henry Hub

Dollars per million btu



### Trade-Weighted Exchange Rate Indexes

Averages of Daily Figures

March 1973=100

January 1987=100

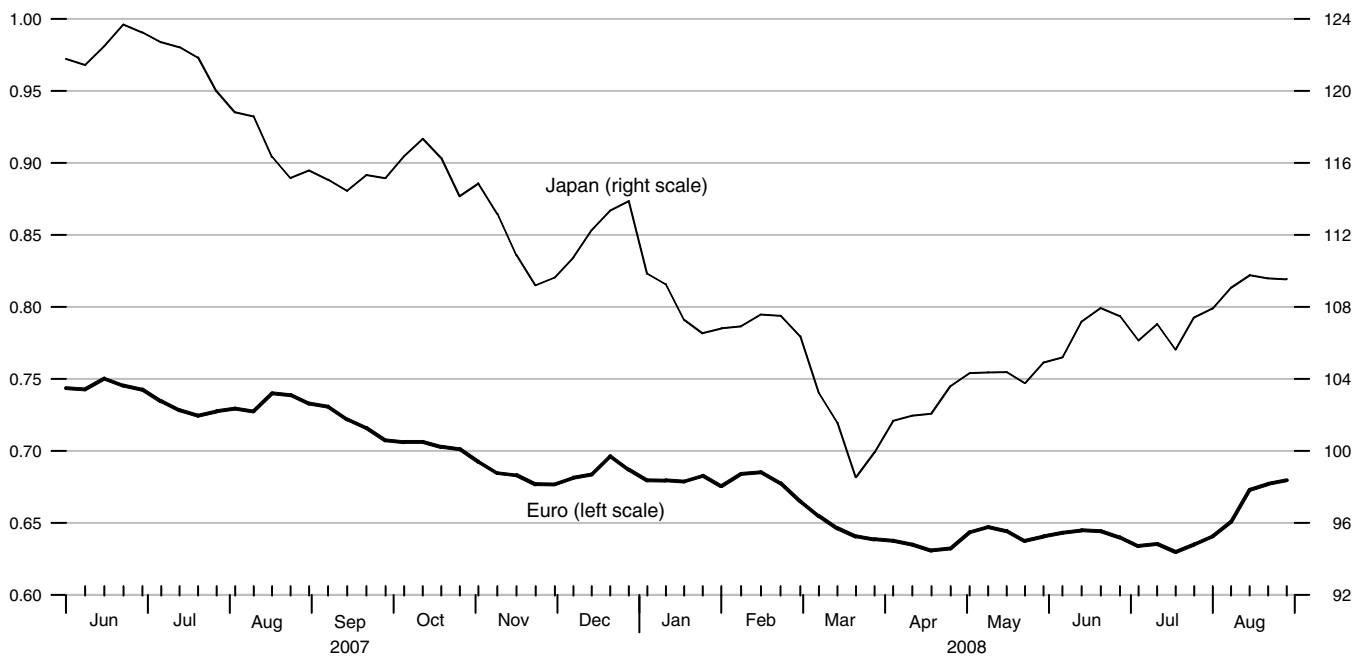


### Exchange Rates

Averages of Daily Figures

Euro/US\$

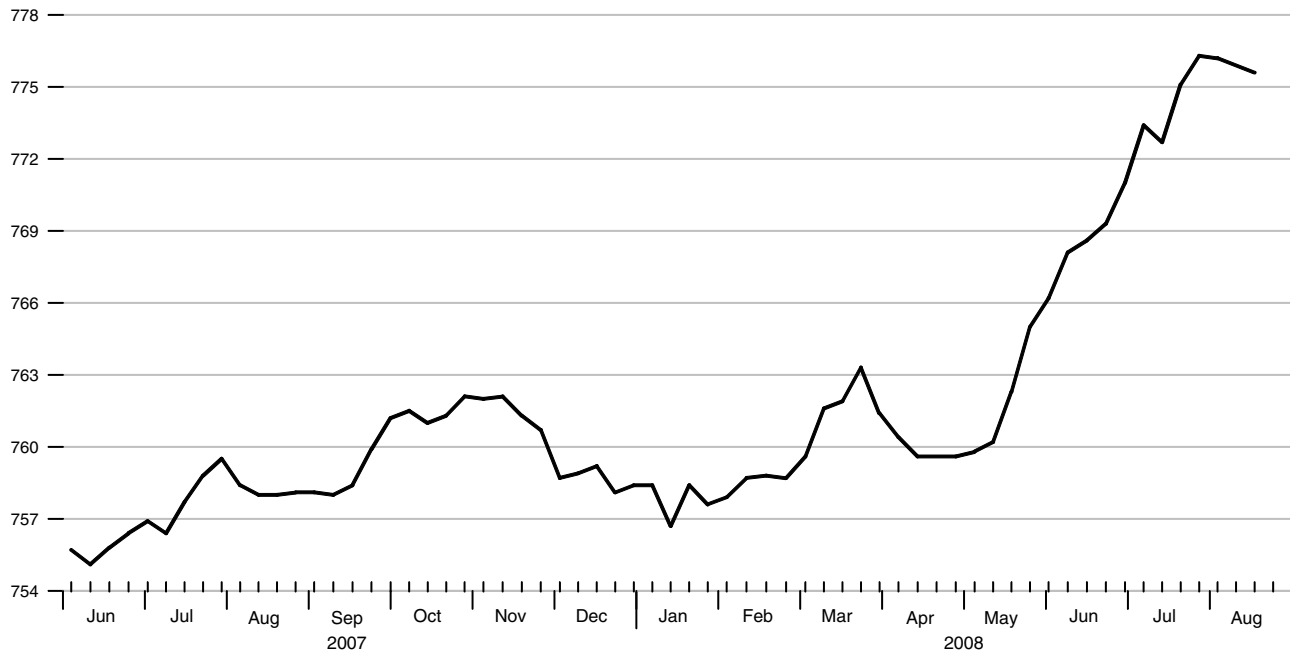
Yen/US\$



### Currency Component of M1

Averages of Daily Figures, Seasonally Adjusted

Billions of dollars

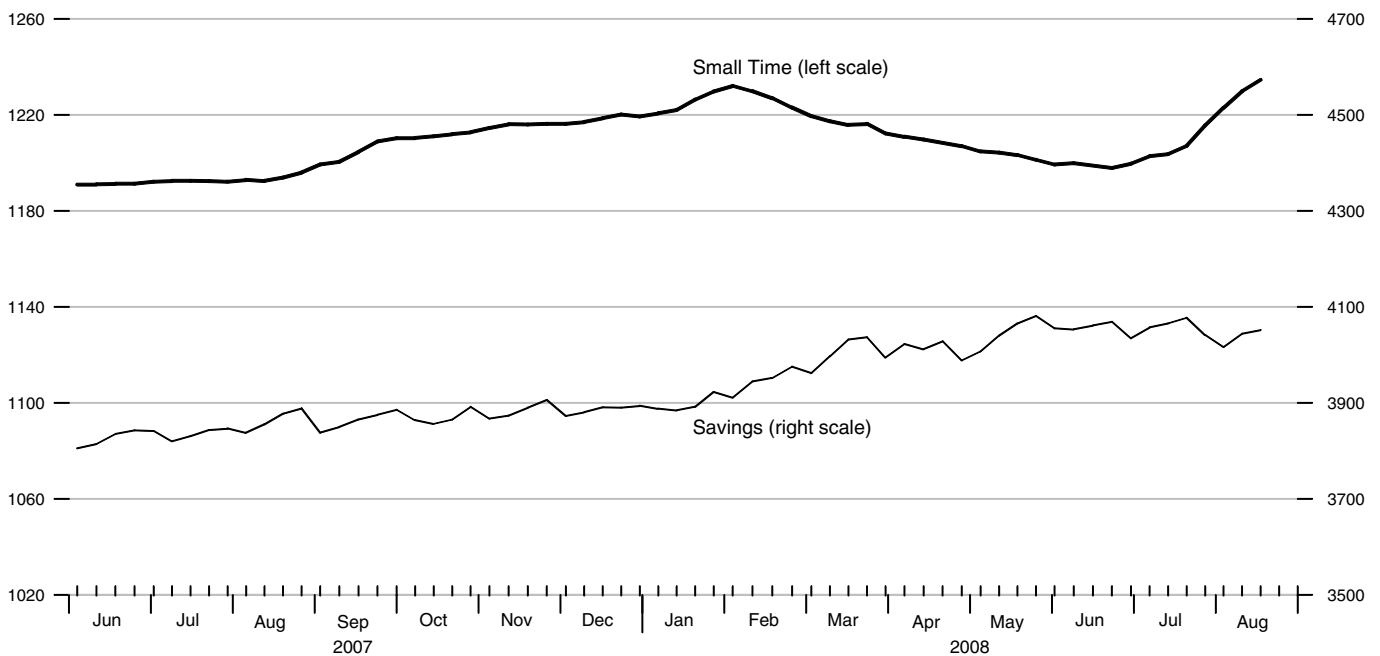


### Savings and Small Time Deposits

Averages of Daily Figures, Seasonally Adjusted

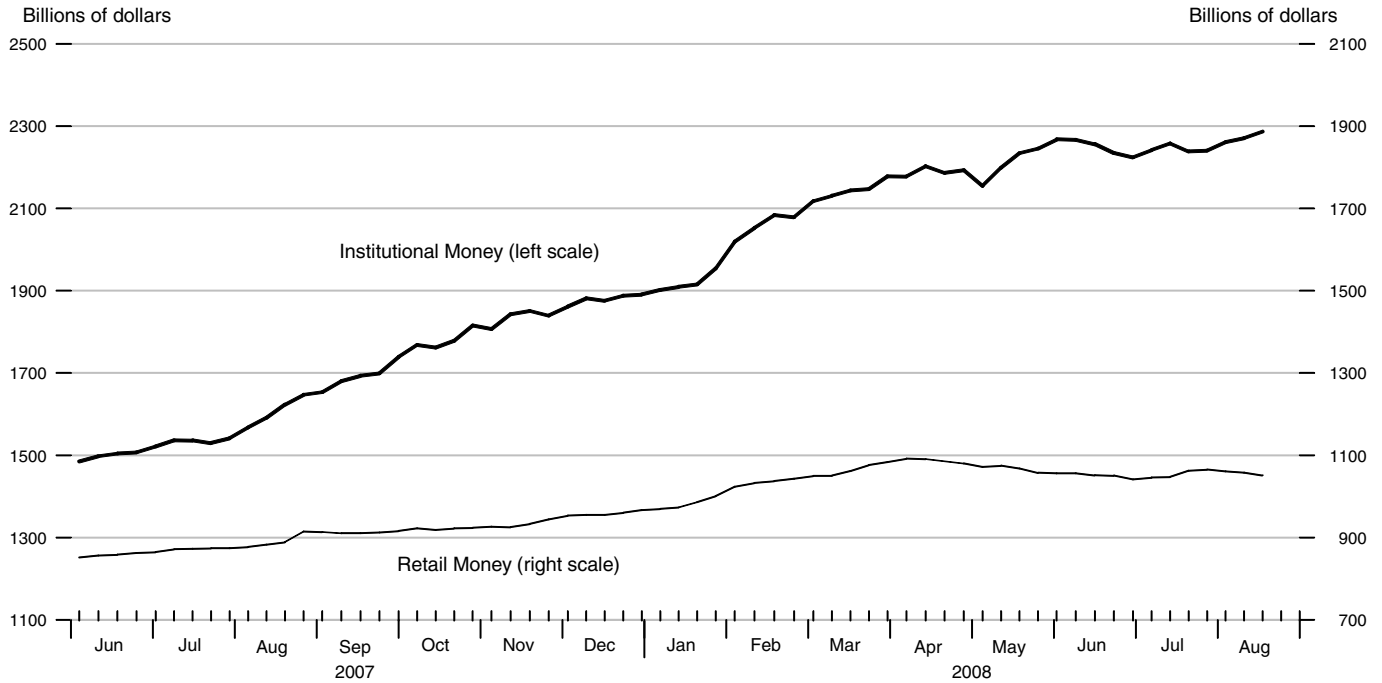
Billions of dollars

Billions of dollars



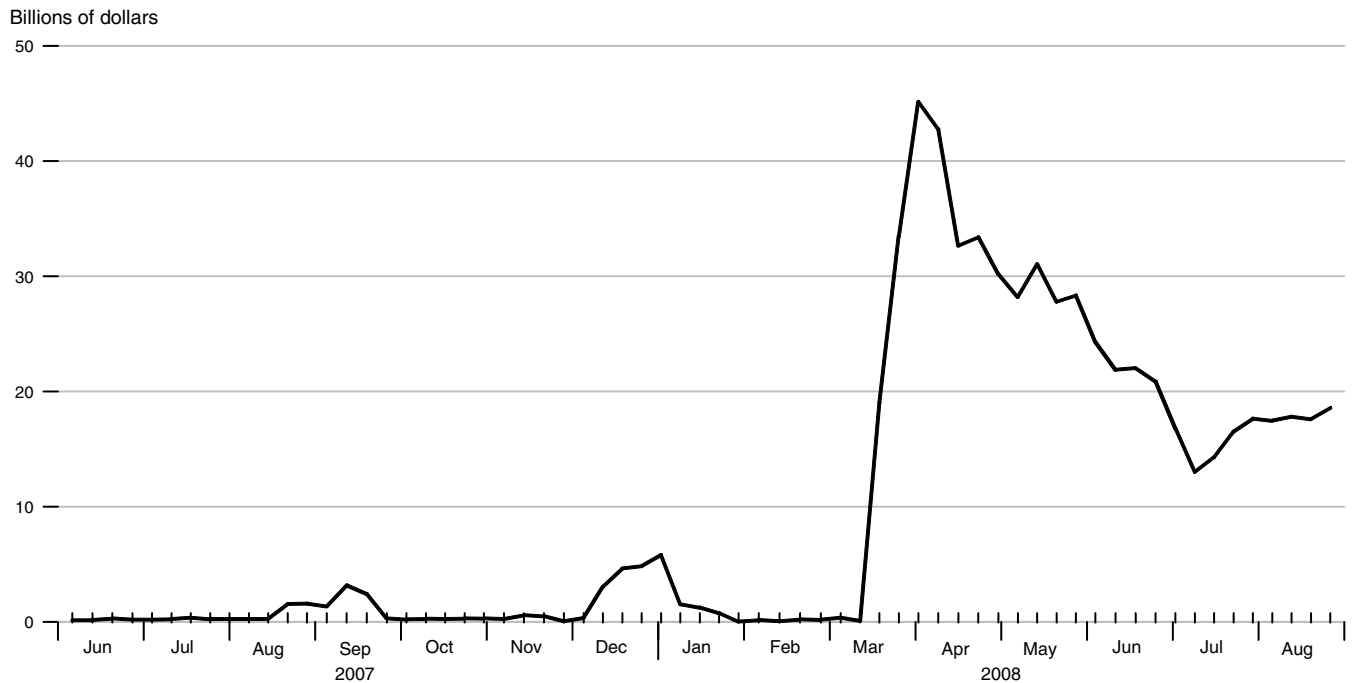
### Institutional and Retail Money Funds

Averages of Daily Figures, Seasonally Adjusted



### Total Borrowings from Federal Reserve Banks

Averages of Daily Figures

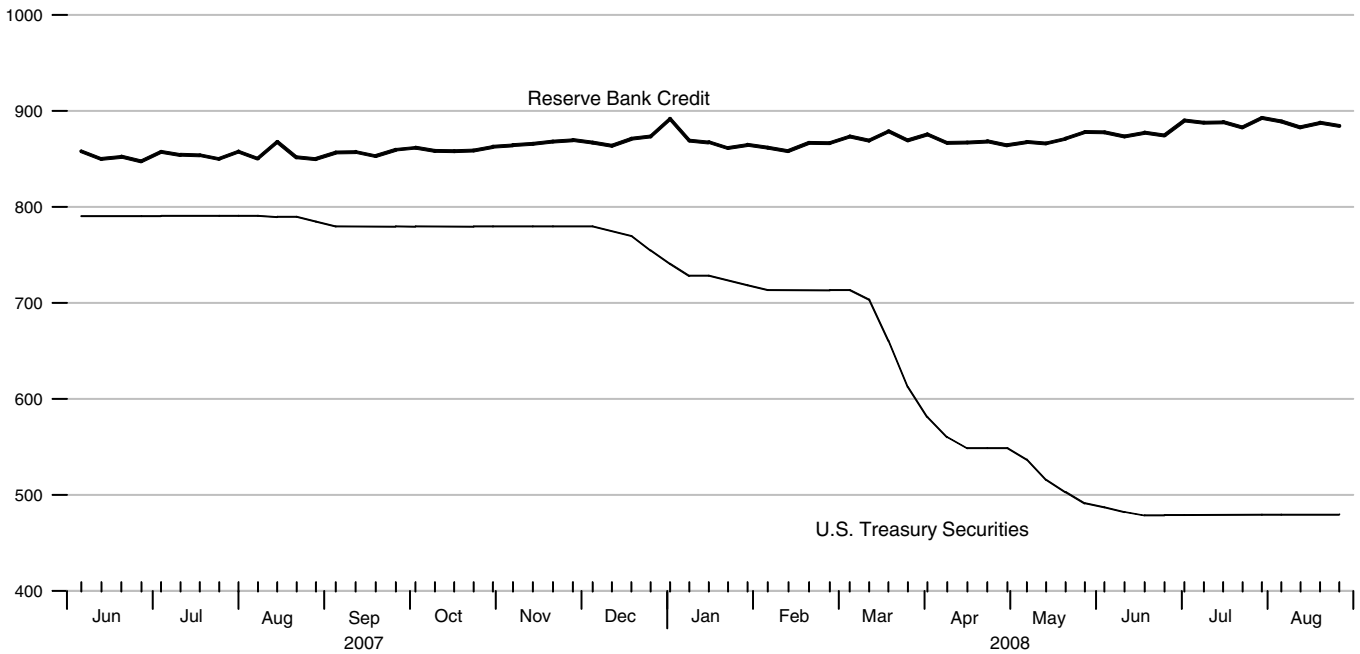


Note: Total borrowings include loans to depository institutions for primary, secondary, and seasonal credit, primary dealer credit facility, and other credit extensions, but exclude term auction credit.

### Reserve Bank Credit and Federal Reserve Holdings of U.S. Treasury Securities

Averages of Daily Figures

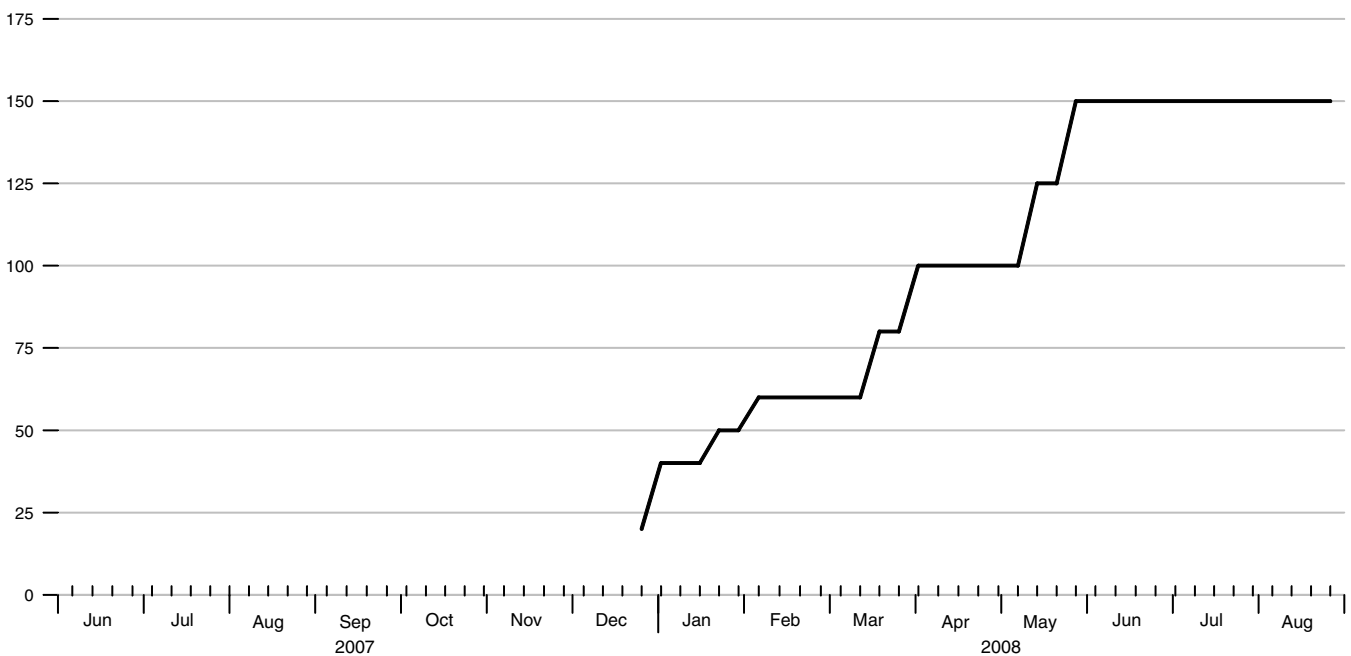
Billions of dollars



### Term Auction Credit

Averages of Daily Figures

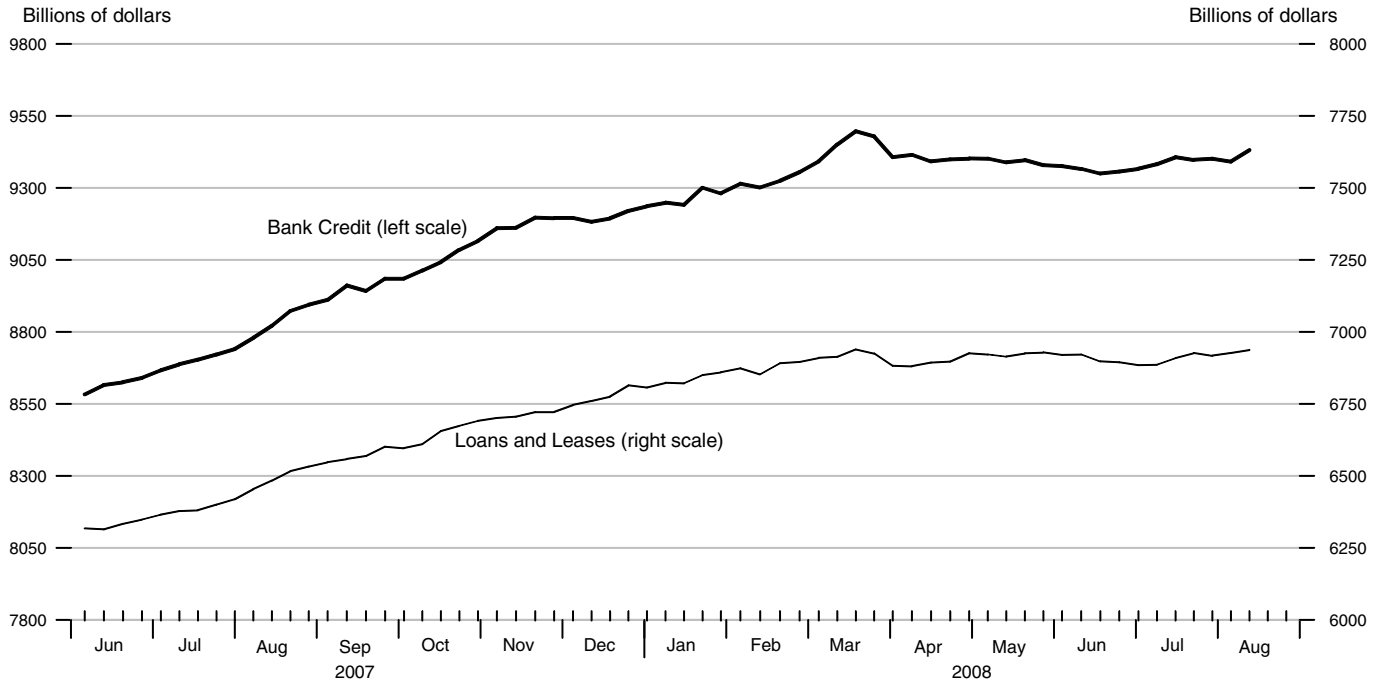
Billions of dollars





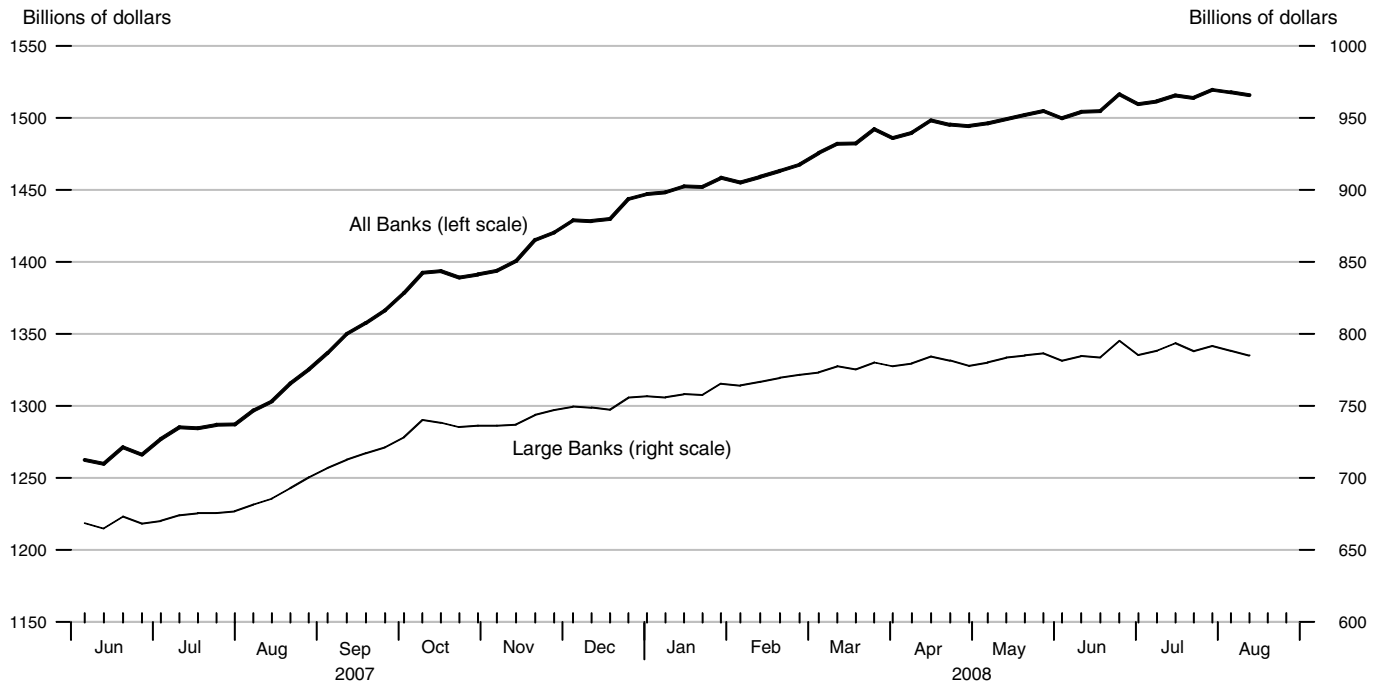
### Bank Loans and Credit

All Commercial Banks in the United States, Seasonally Adjusted



### Commercial and Industrial Loans

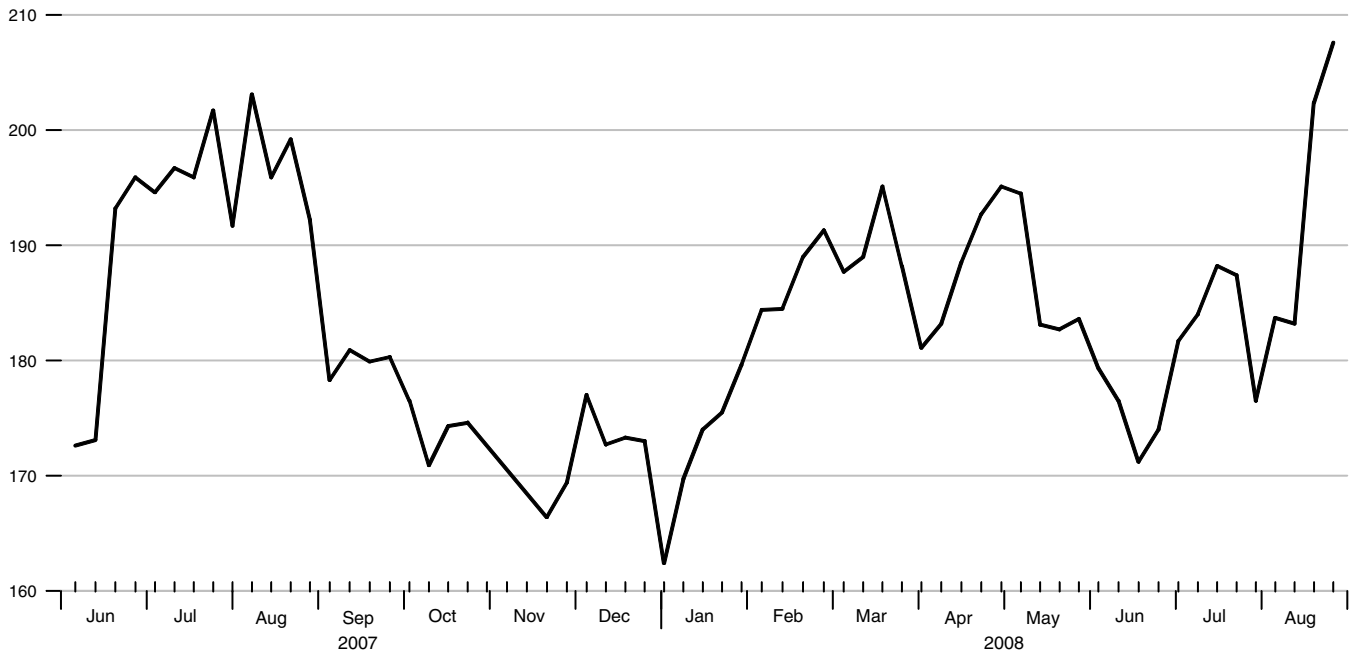
Seasonally Adjusted



**Commercial Paper of Nonfinancial Companies**

Seasonally Adjusted

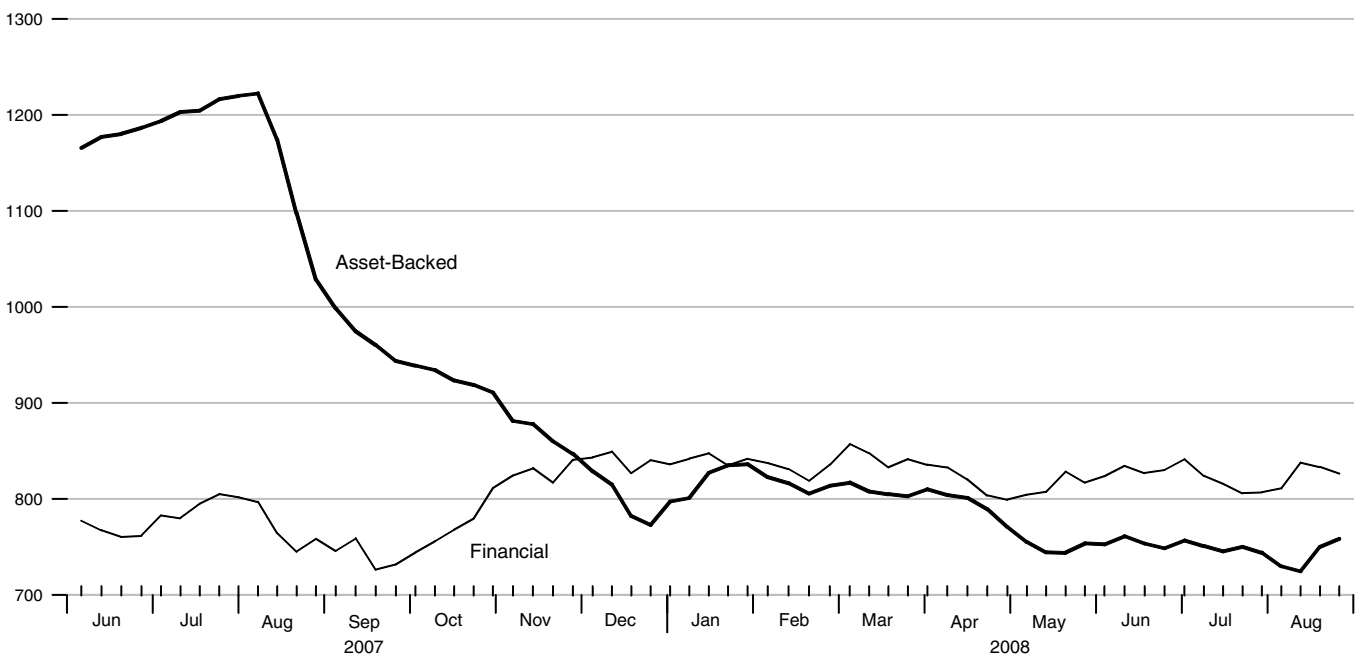
Billions of dollars



**Commercial Paper: Financial and Asset-Backed**

Seasonally Adjusted

Billions of dollars



### Interest Rates

Percent

		30-Day Comm. Paper	90-Day CDs	2-Year Interest Rate Swap	Corporate Aaa Bonds	Corporate Baa Bonds	Municipal Bonds	Federal Funds	3-Month Treasury Bill	2-Year Treasury Securities	5-Year Treasury Securities	10-Year Treasury Securities	30-Year Treasury Securities
Jun	6	2.09	2.67	3.35	5.63	7.01	4.59	1.99	1.82	2.47	3.26	3.98	4.68
	13	2.10	2.76	3.75	5.68	7.08	4.59	1.99	1.93	2.91	3.57	4.15	4.72
	20	2.17	2.80	3.85	5.74	7.14	4.76	1.98	1.92	2.94	3.64	4.20	4.75
	27	2.17	2.80	3.72	5.67	7.08	4.83	1.97	1.75	2.80	3.50	4.09	4.63
Jul	4	2.18	2.79	3.54	5.60	7.06	4.67	2.08	1.83	2.60	3.32	4.00	4.53
	11	2.13	2.78	3.42	5.53	7.03	4.56	1.95	1.74	2.48	3.18	3.90	4.47
	18	2.07	2.80	3.41	5.67	7.18	4.65	2.01	1.41	2.51	3.26	3.98	4.57
	25	2.03	2.79	3.66	5.78	7.27	4.77	1.99	1.57	2.70	3.44	4.11	4.66
Aug	1	2.05	2.79	3.49	5.73	7.21	4.74	2.08	1.67	2.58	3.31	4.04	4.61
	8	2.03	2.79	3.46	5.74	7.22	4.75	2.02	1.67	2.51	3.24	3.99	4.60
	15	2.03	2.78	3.40	5.68	7.17	4.67	1.99	1.83	2.47	3.18	3.91	4.54
	22	2.05	2.80	3.35	5.58	7.11	4.64	2.02	1.72	2.33	3.07	3.83	4.45
	29*	2.05	2.79	3.35	5.52	7.09	.	1.99	1.68	2.33	3.04	3.78	4.39

\*Averages of rates available

### Money Stock and Components

Billions of dollars, seasonally adjusted

		M2	MZM	Currency	Small Time	Savings	Retail Money	Institutional Money
Jul	7	7700.5	8739.8	773.4	1202.8	4057.3	1045.8	2242.1
	14	7700.9	8755.2	772.7	1203.7	4065.6	1047.3	2258.0
	21	7743.3	8775.3	775.1	1207.1	4077.3	1062.1	2239.1
	28	7729.9	8755.3	776.3	1215.6	4041.6	1065.1	2241.0
Aug	4	7721.1	8759.4	776.2	1223.0	4016.4	1060.7	2261.3
	11	7728.1	8769.4	775.9	1229.9	4044.2	1058.0	2271.2
	18	7717.6	8769.9	775.6	1234.6	4051.7	1051.6	2286.9

### Reserves and Base

Billions of dollars, seasonally adjusted

		Adjusted Monetary Base	Adjusted Reserves
Jun	4	862.711	97.226
	18	863.807	93.064
Jul	2	863.388	95.014
	16	872.356	94.714
	30	875.066	95.169
Aug	13	874.325	94.837
	27	876.117	.

### Bank Loans and Credit

Billions of dollars, seasonally adjusted

		Bank Credit	Loans and Leases	C&I Loans (All)	C&I Loans (Large)	Comm. Paper (sa)	Total Borrowings
Jul	16	9406.6	6909.3	1515.7	793.5	188.2	14.301
	23	9397.5	6927.0	1514.1	788.0	187.4	16.510
	30	9401.1	6917.4	1519.5	791.6	176.5	17.644
Aug	6	9391.6	6927.0	1517.9	788.3	183.7	17.463
	13	9431.3	6937.4	1515.9	785.1	183.2	17.807
	20	.	.	.	.	202.4	17.609
	27	.	.	.	.	207.6	18.570

### Exchange Rates

		Major Exchange Rate Index	Broad Exchange Rate Index	Exchange Rate: Euro/\$	Exchange Rate: Yen/\$
Jul	18	70.3	94.9	0.630	105.6
	25	70.9	95.2	0.635	107.4
Aug	1	71.6	95.7	0.641	107.9
	8	72.9	96.7	0.651	109.1
	15	74.6	98.3	0.673	109.8
	22	74.6	98.4	0.677	109.6
	29*	74.6	98.5	0.680	109.6

\*Averages of rates available

## Definitions

**M1:** The sum of currency held outside the vaults of depository institutions, Federal Reserve Banks, and the U.S. Treasury; travelers checks; and demand and other checkable deposits issued by financial institutions (except demand deposits due to the Treasury and depository institutions), minus cash items in process of collection and Federal Reserve float.

**M2:** M1 plus savings deposits (including money market deposit accounts) and small-denomination (less than \$100,000) time deposits issued by financial institutions; and shares in retail money market mutual funds (funds with initial investments of less than \$50,000), net of retirement accounts.

**M3:** M2 plus large-denomination (\$100,000 or more) time deposits; repurchase agreements issued by depository institutions; Eurodollar deposits, specifically, dollar-denominated deposits due to nonbank U.S. addresses held at foreign offices of U.S. banks worldwide and all banking offices in Canada and the United Kingdom; and institutional money market mutual funds (funds with initial investments of \$50,000 or more).

## Notes

*Cover Page:* Economic forecasts are median responses from the Thomson Financial Weekly Economic Survey, which is sent out to 20 to 25 Wall Street economists each week (usually on Tuesday). These forecasts are released on Friday—at which time, Thursday's *USFD* cover page will be updated.

*Page 3:* **Adjusted Monetary Base** equals the sum of currency in circulation outside Federal Reserve Banks and the U.S. Treasury, deposits of depository financial institutions at Federal Reserve Banks, and an adjustment for the effects of changes in statutory reserve requirements on the quantity of base money held by depositories. This series is a spliced chain index; see Anderson and Rasche (1996a, 1996b, 2001, 2003).

*Page 4:* **Adjusted Reserves** is defined as the sum of vault cash and Federal Reserve Bank deposits held by depository institutions and an adjustment for the effects of changes in statutory reserve requirements on the quantity of base money held by depositories. This series, a spliced chain index, is numerically larger than the Board of Governors' measure, which excludes vault cash not used to satisfy statutory reserve requirements and Federal Reserve Bank deposits used to satisfy required clearing balance contracts; see Anderson and Rasche (1996a, 2001, 2003).

*Page 5:* **MZM** includes the zero maturity, or immediately available, components of M3. MZM equals M2 minus small-denomination time deposits, plus institutional money market mutual funds (that is, the money market mutual funds included in M3 but excluded from M2). The label MZM, or "Money, Zero Maturity," was coined by William Poole (1991) for this aggregate, proposed earlier by Motley (1988). Readers are cautioned that since early 1994 the level and growth of M1 have been depressed by retail sweep programs that reclassify transactions deposits (demand deposits and other checkable deposits) as savings deposits overnight, thereby reducing banks' required reserves; see Anderson and Rasche (2001) and [research.stlouisfed.org/aggreg/swdata.html](http://research.stlouisfed.org/aggreg/swdata.html).

*Page 7:* Current data appear in the Federal Reserve Board's H.15 release, except for the **Intended Federal Funds Rate**. Federal Funds Rate represents seven-day averages for the week ending two days earlier than the date shown in the release.

*Page 8:* **10-Year Inflation-Indexed Treasury Yield** is the most recently issued inflation-indexed bond of 10-year original maturity.

**10-Year Inflation-Indexed Treasury Yield Spread** equals the difference between the yield on the most recently issued 10-year inflation-indexed bond and the unadjusted **10-Year Treasury Note Yield** of similar maturity.

*Page 9:* **Rates on Federal Funds Futures Contracts** trace through time the yield on three specific contracts. **Rates on Federal Funds Futures on Selected Dates** displays a single day's snapshot of yields for contracts expiring in the months shown on the horizontal axis.

*Page 11:* **Crude Oil** (West Texas intermediate) spot and futures prices are listed in the Wall Street Journal. **Spot Prices** are weekly averages of daily prices; **Futures Prices** are usually taken on Wednesday.

*Page 12:* **Natural Gas** (Henry Hub) spot and futures prices are listed in the Wall Street Journal. **Spot Prices** are weekly averages of daily prices; **Futures Prices** are usually taken on Wednesday.

*Page 13:* Data appear in the Federal Reserve Board's H.10 release. The **Major Index** comprises 7 currencies. The **Broad Index** comprises the **Major Index** plus 19 additional currencies. Further details may be found at [www.federalreserve.gov/releases/h10/summary/](http://www.federalreserve.gov/releases/h10/summary/).

*Page 14:* Data appear in the Federal Reserve Board's H.6 release. **Savings Deposits** is the sum of money market deposit accounts and passbook and statement savings. **Small Time Deposits** have a minimum initial maturity of 7 days. Savings deposits and small time deposits are at all depository institutions.

*Page 15:* Data appear in the Federal Reserve Board's H.6 and H.4.1 releases. **Retail Money Funds** are included in M2. **Institutional Money Funds** are not part of M2; they used to be included in M3, which was discontinued as of March 23, 2006. See [www.federalreserve.gov/releases/h6/discm3.htm](http://www.federalreserve.gov/releases/h6/discm3.htm).

As of December 27, 2007, Loans to Depository Institutions on the Fed's Balance Sheet were reclassified as Other Loans. **Other Loans** included primary, secondary, and seasonal credit. As of March 20, 2008, Other Loans were expanded to include funds advanced through the **Primary Credit Dealer Facility** and **Other Extensions**. According to the Federal Reserve: "The latter category includes credit extensions such as the arrangements involving JP Morgan Chase & Co. and The Bear Stearns Companies Inc. that were approved by the Board of Governors on March 14, 2008, and March 16, 2008." See <http://www.federalreserve.gov/releases/h41/Current/>.

*Page 16:* **Federal Reserve Holdings of U.S. Treasury Securities** include nominal and inflation-indexed securities and the compensation that adjusts for the effect of inflation on the original face value of inflation-indexed securities (inflation compensation). **Term Auction Credit** are collateralized, term funds (28-day) that are auctioned to depository institutions under the temporary Term Auction Facility. Term Auction Credit became a Federal Reserve balance sheet item as of December 27, 2007. For more information on the Term Auction Facility, see <http://www.federalreserve.gov/monetarypolicy/taf.htm>.

*Page 17:* Data appear in the Federal Reserve Board's H.8 release. **Bank Loans and Credit** include foreign-related institutions. **Bank Credit** includes loans and leases and securities. **All Banks** includes foreign-related institutions. **Large Banks** are domestically chartered banks (adjusted for mergers) and report on a weekly basis.

*Page 18:* Current data appear at [www.federalreserve.gov/releases/cp/outstandings.htm](http://www.federalreserve.gov/releases/cp/outstandings.htm).

*Page 19:* **Treasury Security** yields are Treasury constant maturities as reported in the Board of Governors of the Federal Reserve System's H.15 release.

The **3-Month Treasury Bill** yield is the secondary market yield from the H.15 release. **Federal Funds** represents seven-day averages for the week ending two days earlier than the date shown in the table. **Municipal Bonds** represents Bond Buyer's Average Index of 20 municipal bonds, Thursday data.

## Sources

### *Board of Governors of the Federal Reserve System*

Monetary aggregates and components: H.6 release. Bank credit: H.8 release. Total Borrowings and Selected Reserve Balance Sheet Items: H.4.1 release. Interest rates: H.15 release. Exchange rates: H.10 release. Commercial paper: Board of Governors web site.

### *Chicago Board of Trade*

Federal funds futures contract.

### *Dow Jones Indexes*

Dow Jones Industrial Average.

### *Federal Reserve Bank of St. Louis*

Adjusted monetary base, adjusted reserves, and MZM.

### *NASDAQ Stock Market, Incorporated*

NASDAQ Composite®.

### *Standard & Poor's*

Standard & Poor's 500 composite index.

### *U.S. Department of the Treasury*

U.S. inflation-indexed security yields.

### *Wall Street Journal*

Oil (West Texas intermediate) and natural gas (Henry Hub) spot and futures prices.

### *Wilshire Associates Incorporated (www.wilshire.com)*

Wilshire 5000®.

## References

Anderson, Richard G. and Robert H. Rasche (1996a). "A Revised Measure of the St. Louis Adjusted Monetary Base," *Federal Reserve Bank of St. Louis Review*, March/April, 78(2), pp. 3-13.

\_\_\_\_ and \_\_\_\_ (1996b). "Measuring the Adjusted Monetary Base in an Era of Financial Change," *Federal Reserve Bank of St. Louis Review*, November/ December, 78(6), pp. 3-37.

\_\_\_\_ and \_\_\_\_ (2001). "Retail Sweep Programs and Bank Reserves, 1994-1999," *Federal Reserve Bank of St. Louis Review*, January/February, pp. 51-72.

\_\_\_\_ and \_\_\_\_ , with Jeffrey Loesel (2003). "A Reconstruction of the Federal Reserve Bank of St. Louis Adjusted Monetary Base and Reserves," *Federal Reserve Bank of St. Louis Review*, September/October, 85(5), pp. 39-70.

Motley, Brian (1988). "Should M2 Be Redefined?" *Federal Reserve Bank of San Francisco Economic Review*, Winter, pp. 33-51.

Poole, William (1991). Statement before the Subcommittee on Domestic Monetary Policy of the Committee on Banking, Finance and Urban Affairs, U.S. House of Representatives, November 6, 1991. Government Printing Office, Serial No. 102-82.

**Note:** Articles from this Bank's *Review* are available on the Internet at [research.stlouisfed.org/publications/review/](http://research.stlouisfed.org/publications/review/).