



Calendar of Releases

Titles for the current week are links to their respective releases.

MONDAY*	TUESDAY	WEDNESDAY	THURSDAY*	FRIDAY
<p>August 16</p>	<p>August 17</p> <p>Housing Starts (Jul) A: 1.98M P: 1.87M</p> <p>Building Permits (Jul) A: 2.06M P: 1.95M</p> <p>CPI (Jul) A: -0.1% P: 0.1%</p> <p>Industrial Production (Jul) A: 0.4% P: 0.4%</p> <p>Capacity Utilization (Jul) A: 77.1 P: 77.5</p>	<p>August 18</p> <p>Latest issue: <i>Monetary Trends</i></p>	<p>August 19</p> <p>Initial Claims A: 331K P: 335K</p> <p>Leading Indicators (Jul) A: -0.3% P: -0.3%</p>	<p>August 20</p>
<p>August 23</p>	<p>August 24</p> <p>Existing Home Sales (Jul) F: N/A P: 6.73M</p>	<p>August 25</p> <p>New Home Sales (Jul) F: N/A P: 1281K</p> <p>Durable Goods (Jul) F: N/A P: 0.6%</p>	<p>August 26</p> <p>Initial Claims F: N/A P: 334K</p> <p>Help Wanted Index (Jul)</p>	<p>August 27</p> <p>GDP (Q2) F: N/A P: 3.1%</p> <p>Corporate Profits (Q2)</p>
<p>August 30</p> <p>Personal Income (Jul) F: N/A</p> <p>Consumption (Jul) F: N/A</p>	<p>August 31</p> <p>Consumer Conf (Aug) F: N/A</p>	<p>September 1</p> <p>Construct Spending (Jul) F: N/A</p> <p>ISM Index (Aug) F: N/A</p> <p>Latest issue: <i>Review</i></p>	<p>September 2</p> <p>Initial Claims F: N/A</p> <p>Factory Orders (Jul) F: N/A</p> <p>Productivity (Q2) F: N/A</p> <p>Unit Labor Costs (Q2) F: N/A</p>	<p>September 3</p> <p>Nonfarm Payrolls (Aug) F: N/A</p> <p>Unemployment Rate (Aug) F: N/A</p> <p>ISM Non Mfg Index (Aug) F: N/A</p>

DEFINITIONS: A, actual value; P, previous week's forecast; F, current week's forecast; K, thousand; M, million; B, billion.

*The Board of Governors of the Federal Reserve System provides H.3, H.4.1, and H.6 releases each Thursday and H.10 and H.15 releases each Monday.

Forecast data are from Thomson Financial. ©Thomson Financial, 2004. All Rights Reserved. Use, duplication, or sale of this service or the data contained herein, except as described in the Federal Reserve Bank of St. Louis Subscription Agreement, is strictly prohibited.

Contents

Page

3	Adjusted Monetary Base
4	Adjusted Reserves
5	MZM
6	M2
7	Yields on Selected Securities
8	Yields on Nominal and Inflation-Indexed Treasury Securities
9	Federal Funds Futures Market
10	Equity Price Indices
11	Crude Oil Prices
12	Natural Gas Prices
13	Exchange Rates
14	Currency, Savings, and Small Time Deposits
15	Large Time Deposits, Retail Money Funds, and Borrowings from Federal Reserve Banks
16	Bank Loans
17	Commercial Paper
18	Reference Tables
19	Notes

Conventions used in this publication:

1. Unless otherwise indicated, figure and table data are weekly and seasonally adjusted.
2. For pages 7, 10, 12 (top chart), 13, and 18 (top and bottom right tables), the last observation is a daily average that incorporates all available data at the time of publication, which usually includes observations for the first three trading days of the week (Monday through Wednesday). The previous observations signify that week's average.

We welcome your comments addressed to:

Editor, *U.S. Financial Data*
Research Division
Federal Reserve Bank of St. Louis
P.O. Box 442
St. Louis, MO 63166-0442

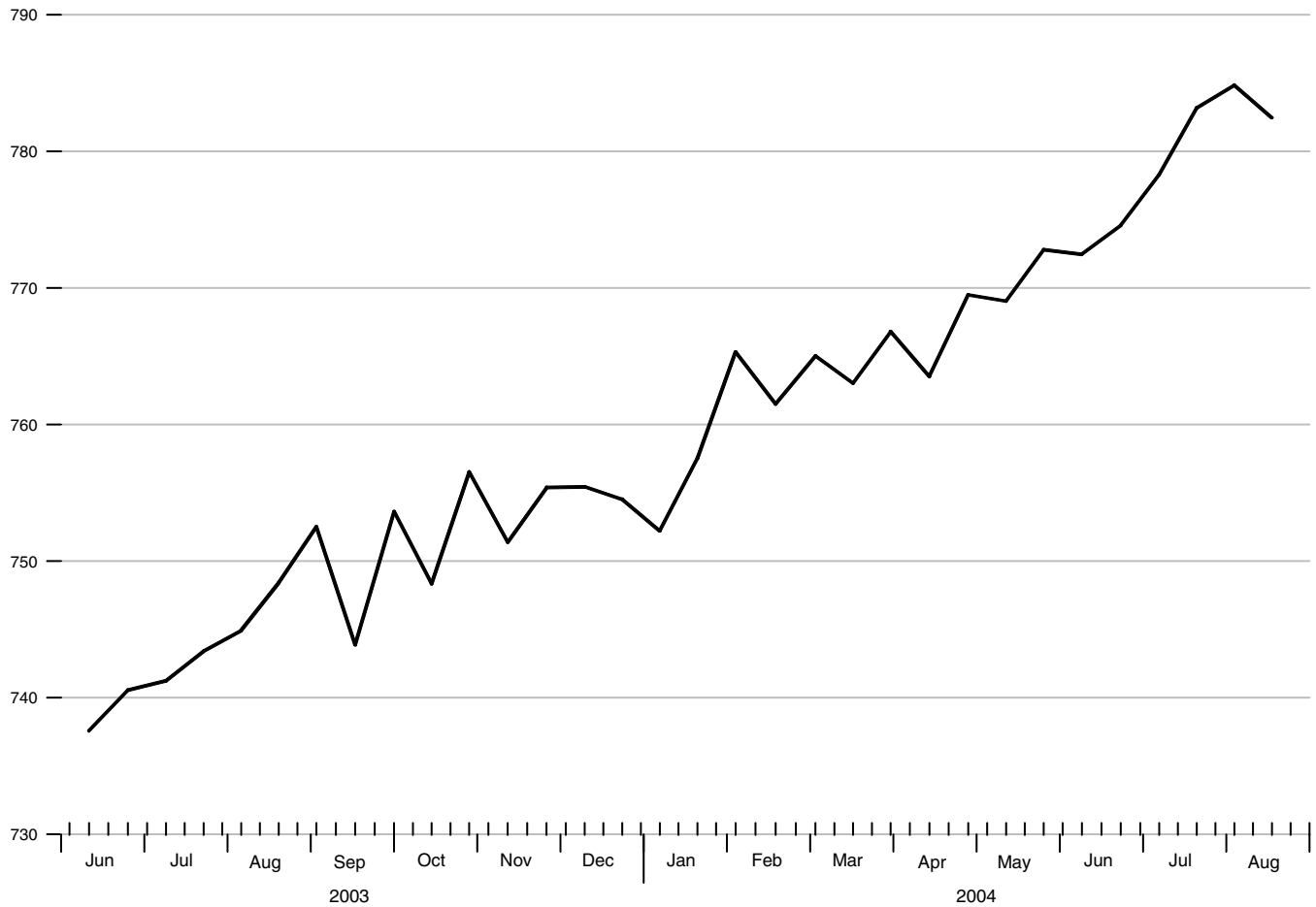
or to:

stlsFRED@stls.frb.org

Adjusted Monetary Base

Averages of Daily Figures, Seasonally Adjusted

Billions of dollars



Adjusted Monetary Base

To the average of
two maintenance
periods ending:

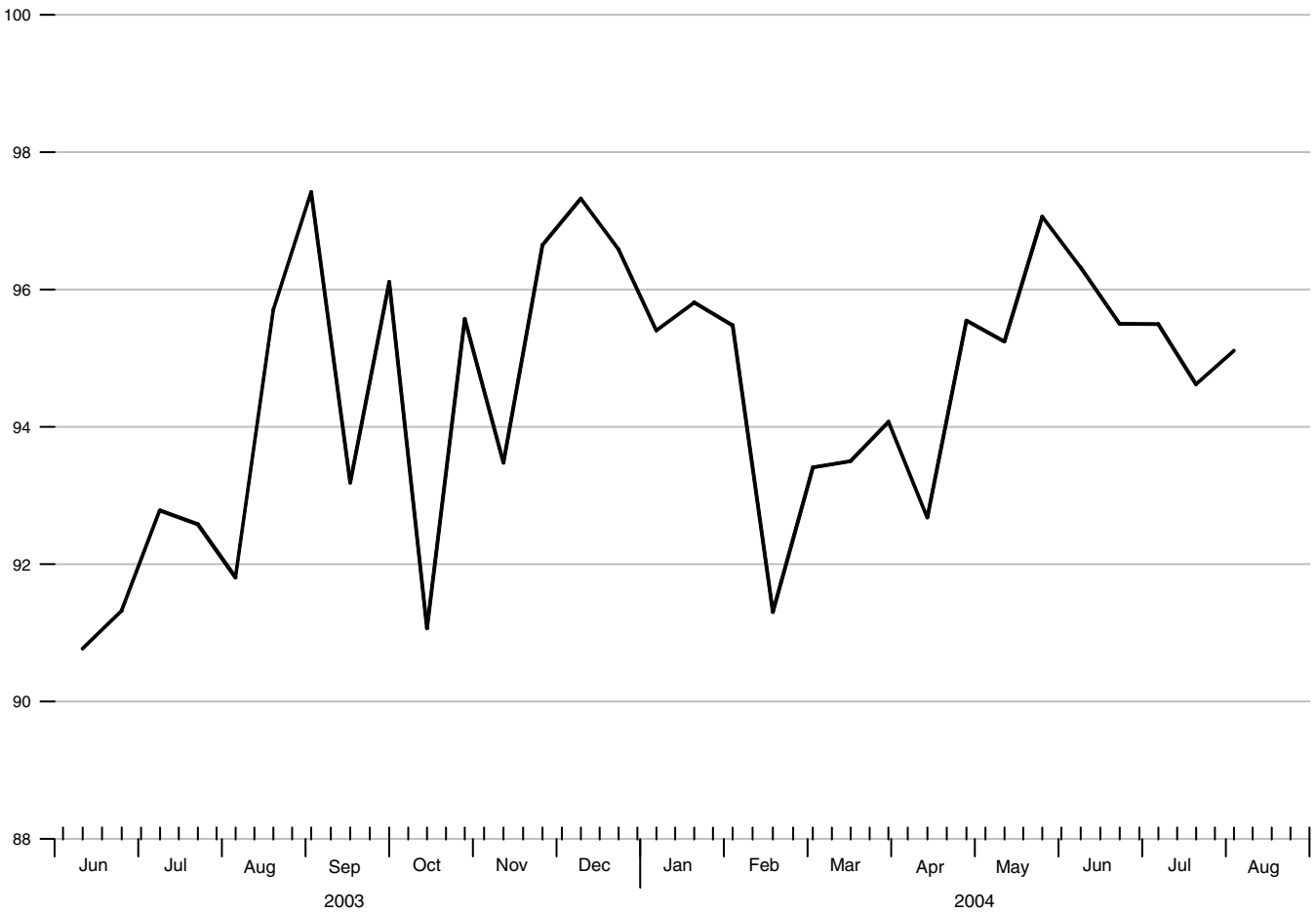
Compounded annual rates of change, average of two maintenance periods ending:

	08/20/03	11/12/03	01/21/04	02/18/04	03/17/04	04/14/04	05/26/04	06/23/04
01/21/04	2.6							
02/18/04	4.5	4.7						
03/17/04	4.1	3.9	8.1					
04/14/04	3.8	3.6	6.0	1.5				
05/26/04	4.2	4.2	6.3	3.7	4.8			
06/23/04	4.3	4.3	5.9	3.9	4.7	5.8		
07/21/04	5.0	5.2	7.0	5.5	6.5	7.8	8.6	
08/18/04	5.0	5.2	6.7	5.4	6.2	7.1	7.4	8.8

Adjusted Reserves

Seasonally Adjusted

Billions of dollars



Adjusted Reserves

To the average of
two maintenance
periods ending:

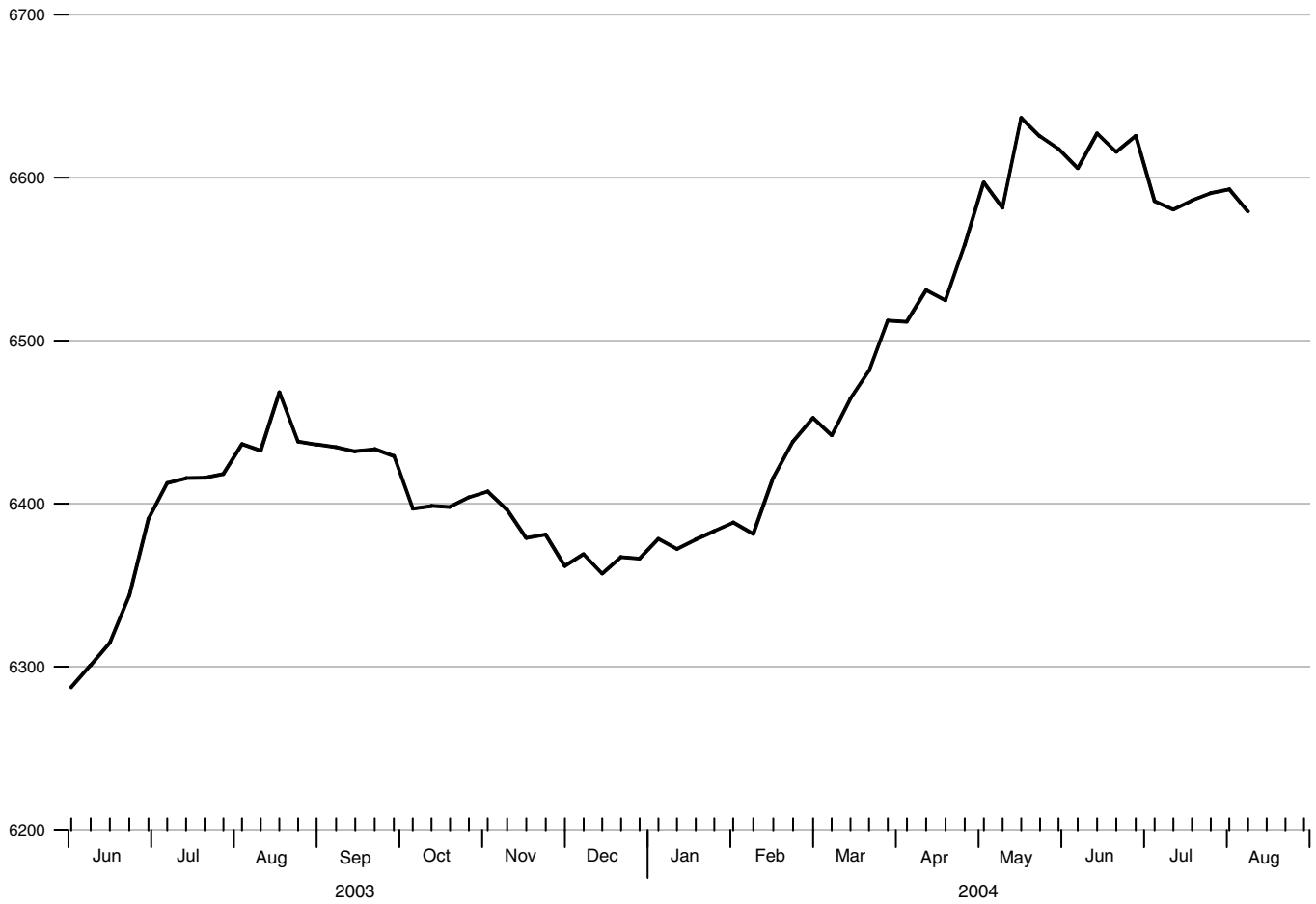
Compounded annual rates of change, average of two maintenance periods ending:

	08/06/03	10/29/03	01/07/04	02/04/04	03/03/04	03/31/04	05/12/04	06/09/04
01/07/04	10.0							
02/04/04	7.6	9.6						
03/03/04	0.3	-3.0	-22.2					
03/31/04	2.7	1.2	-9.6	-12.0				
05/12/04	4.5	4.2	-1.8	-1.0	18.3			
06/09/04	5.8	5.9	1.7	3.2	18.6	17.2		
07/07/04	3.9	3.4	-1.0	-0.4	10.1	6.9	0.7	
08/04/04	2.9	2.2	-2.0	-1.6	6.5	3.4	-2.4	-11.7

MZM

Averages of Daily Figures, Seasonally Adjusted

Billions of dollars



MZM

To the average
of four weeks
ending:

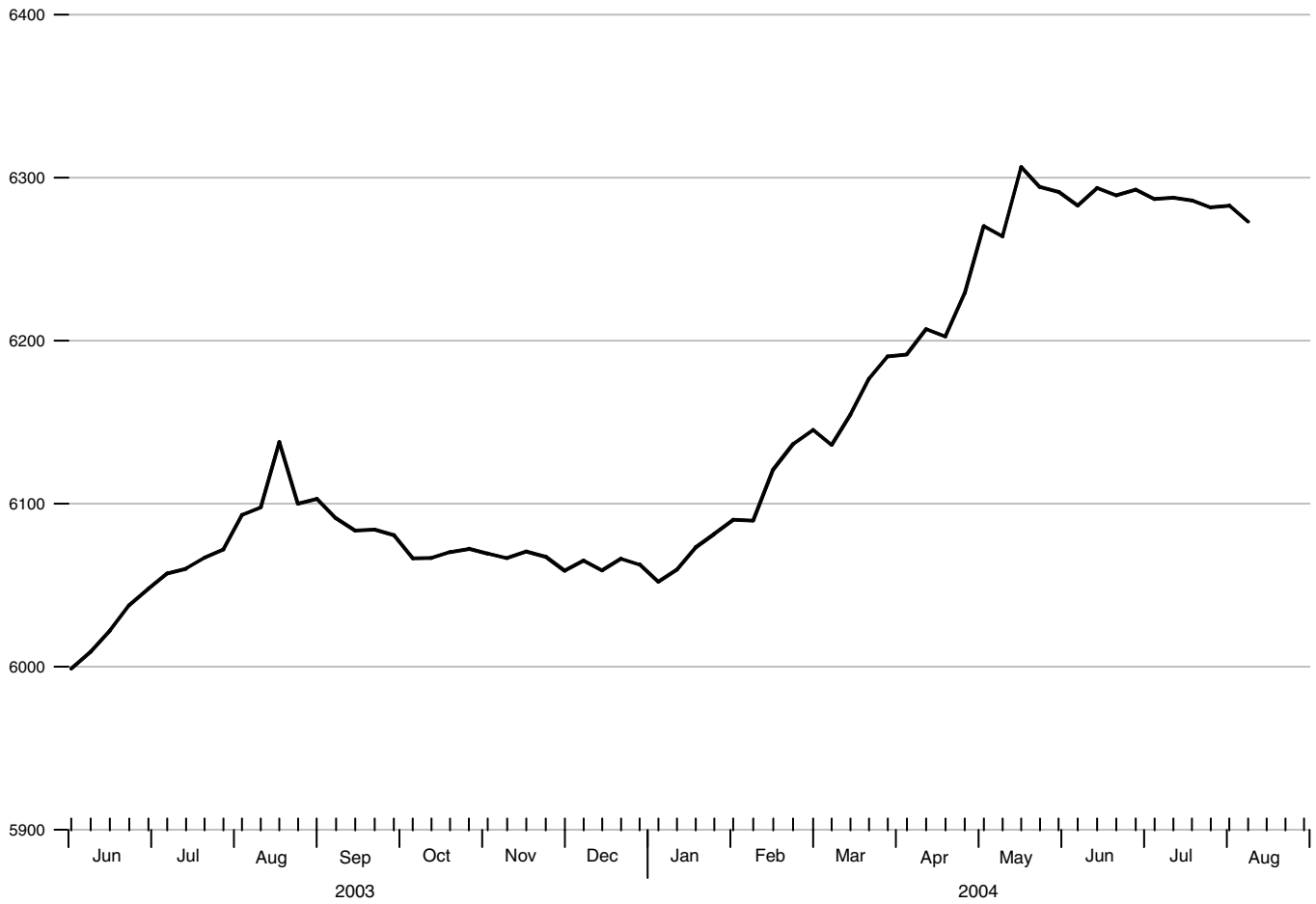
Compounded annual rates of change, average of four weeks ending:

	08/11/03	11/03/03	01/12/04	02/09/04	03/08/04	04/05/04	05/17/04	06/14/04
01/12/04	-2.0							
02/09/04	-1.3	-1.1						
03/08/04	0.3	1.6	6.9					
04/05/04	1.6	3.4	8.5	11.7				
05/17/04	3.4	5.6	10.4	12.8	13.3			
06/14/04	3.6	5.6	9.4	11.1	10.9	10.6		
07/12/04	3.0	4.5	7.4	8.3	7.6	6.4	0.8	
08/09/04	2.5	3.8	6.0	6.5	5.6	4.3	-0.4	-3.1

M2

Averages of Daily Figures, Seasonally Adjusted

Billions of dollars



M2

To the average
of four weeks
ending:

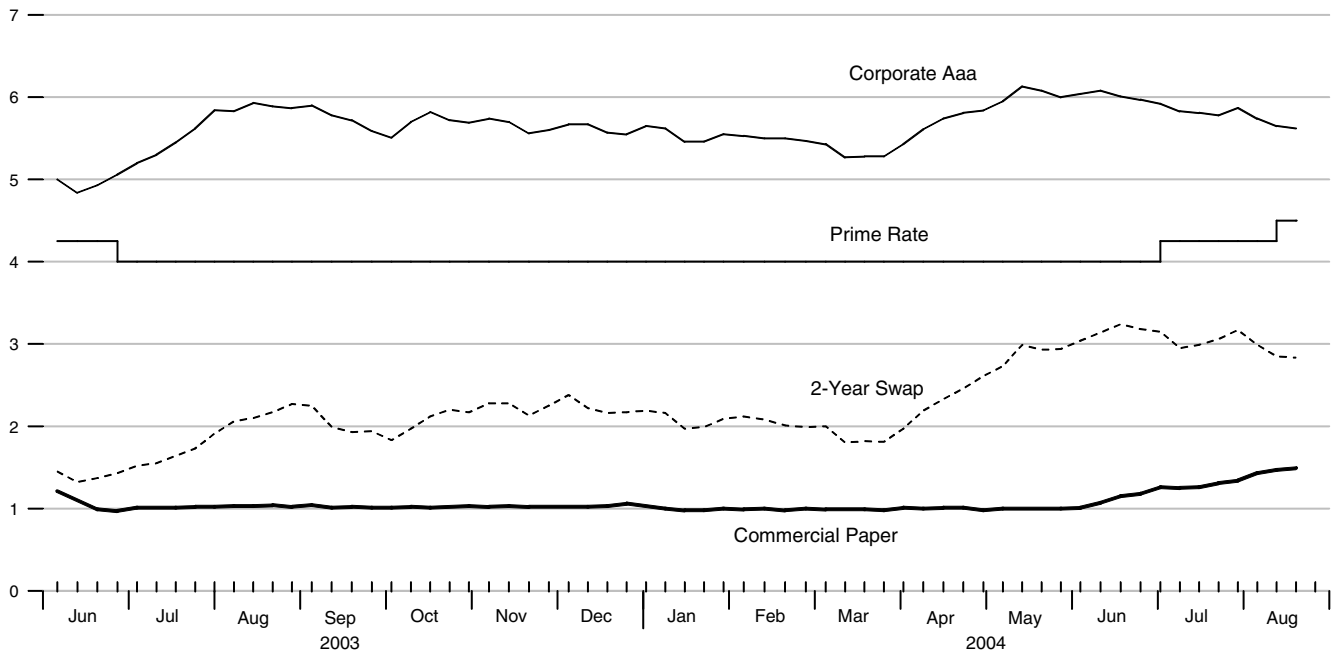
Compounded annual rates of change, average of four weeks ending:

	08/11/03	11/03/03	01/12/04	02/09/04	03/08/04	04/05/04	05/17/04	06/14/04
01/12/04	-0.9							
02/09/04	0.0	0.9						
03/08/04	1.5	3.1	8.3					
04/05/04	2.4	4.3	8.7	10.6				
05/17/04	4.0	6.1	10.2	11.7	11.8			
06/14/04	4.1	6.0	9.2	10.1	9.8	9.8		
07/12/04	3.7	5.3	7.7	8.2	7.4	6.8	2.3	
08/09/04	3.3	4.5	6.4	6.6	5.7	4.9	0.9	-1.0

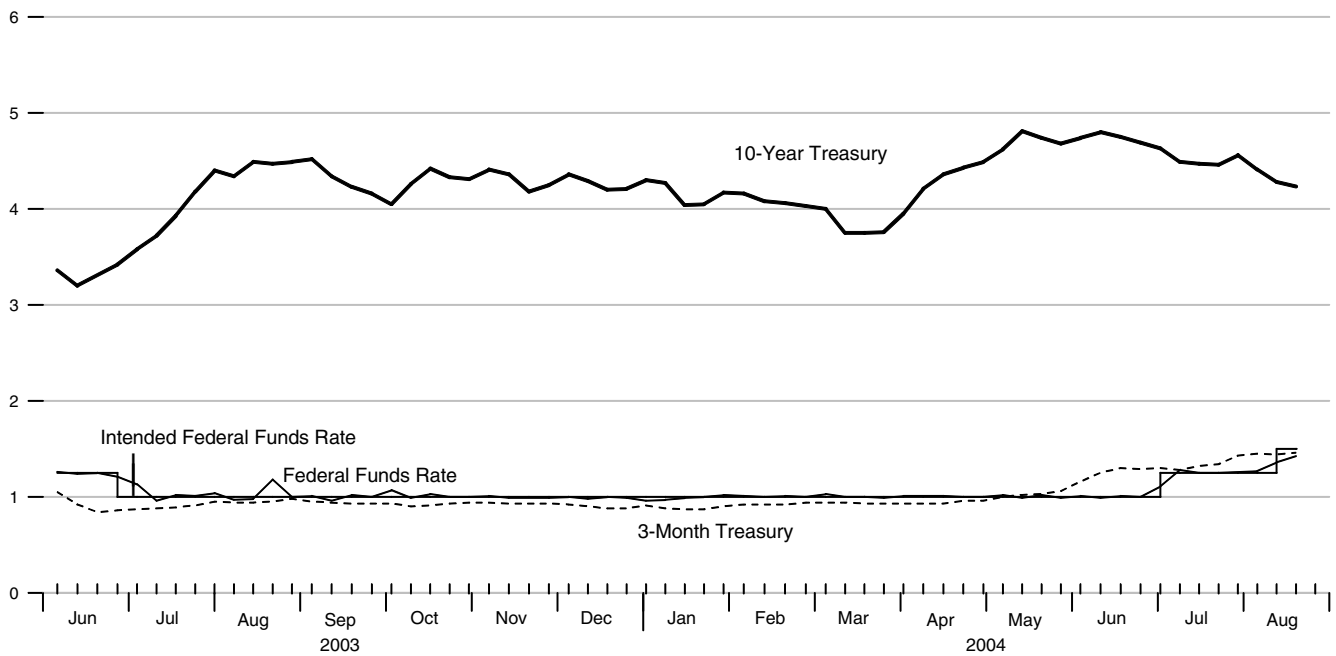
Yields on Selected Securities

Averages of Daily Figures

Percent



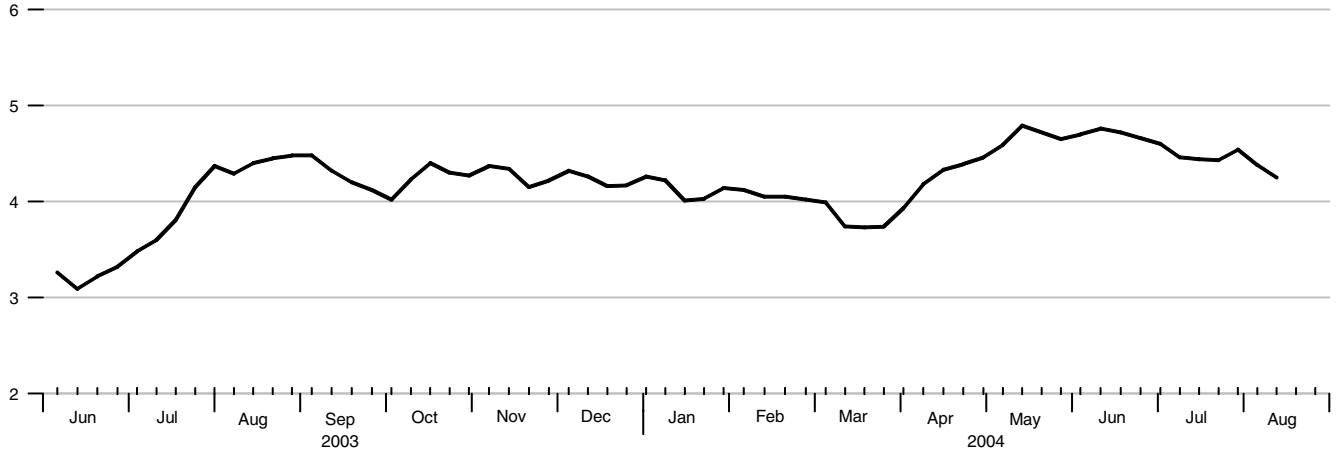
Percent



10-Year Treasury Note Yield

Averages of Daily Figures

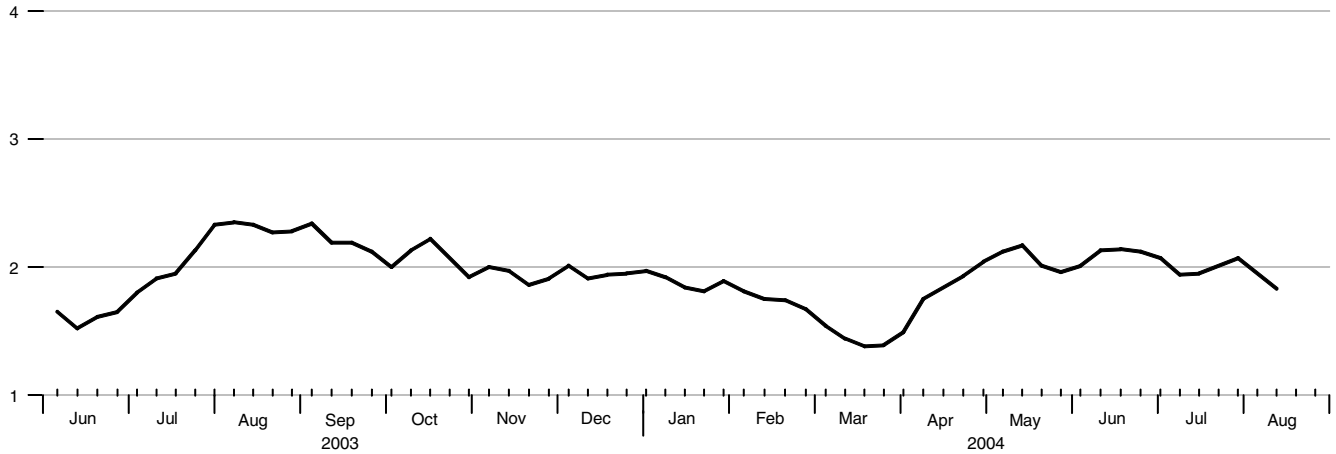
Percent



10-Year Inflation-Indexed Treasury Yield

Averages of Daily Figures

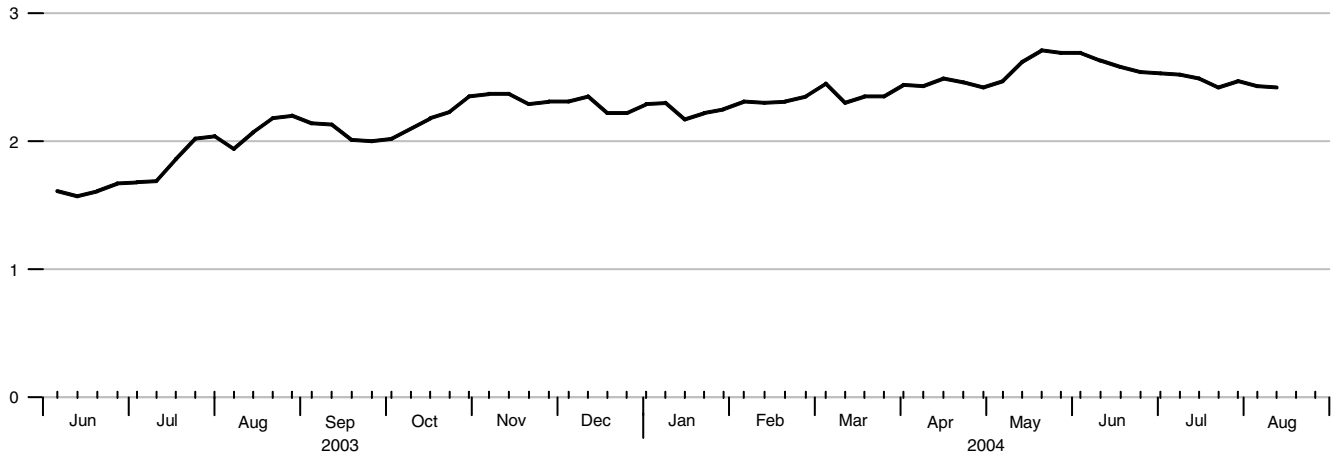
Percent



10-Year Inflation-Indexed Treasury Yield Spread

Averages of Daily Figures

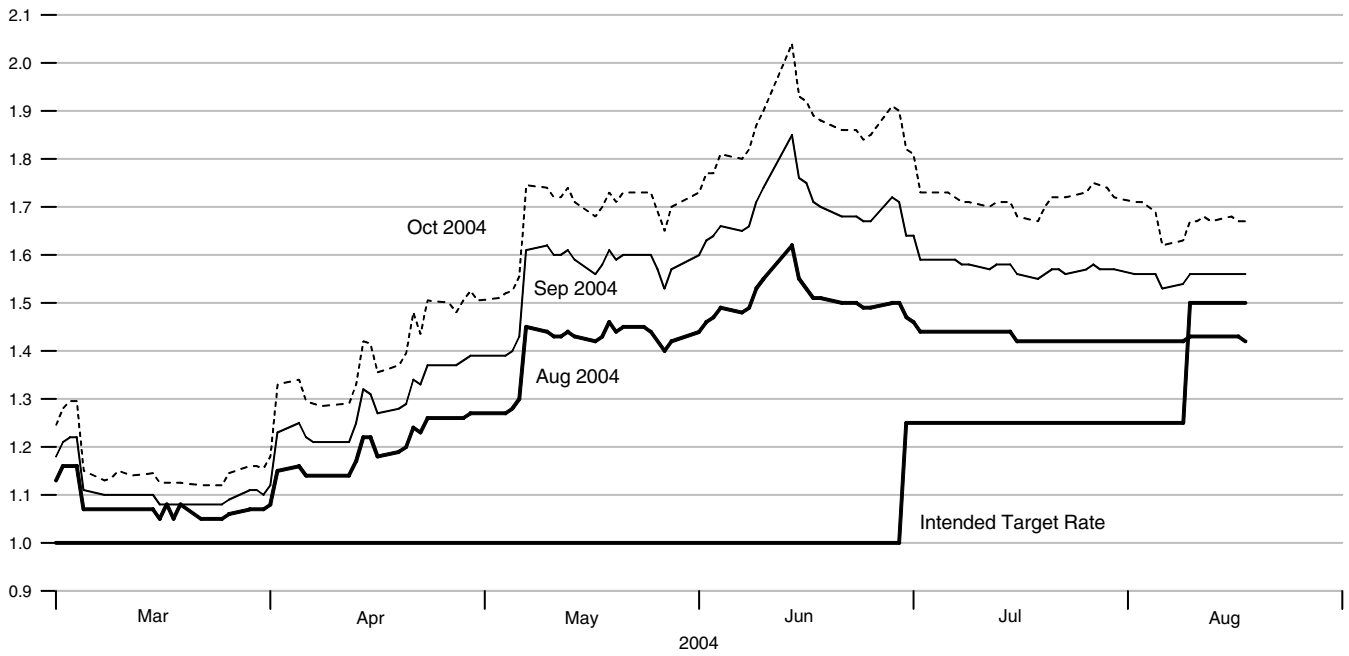
Percent



Rates on Federal Funds Futures Contracts

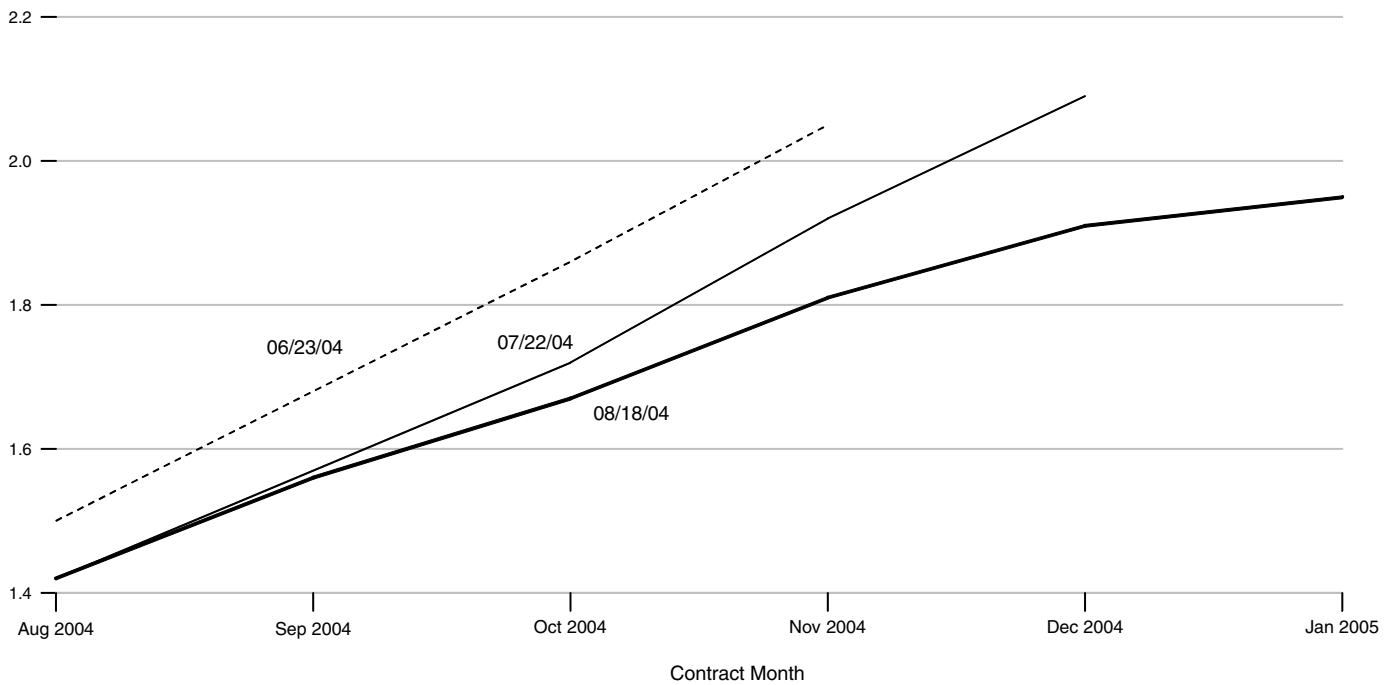
Daily Data

Percent



Rates on Federal Funds Futures on Selected Dates

Percent

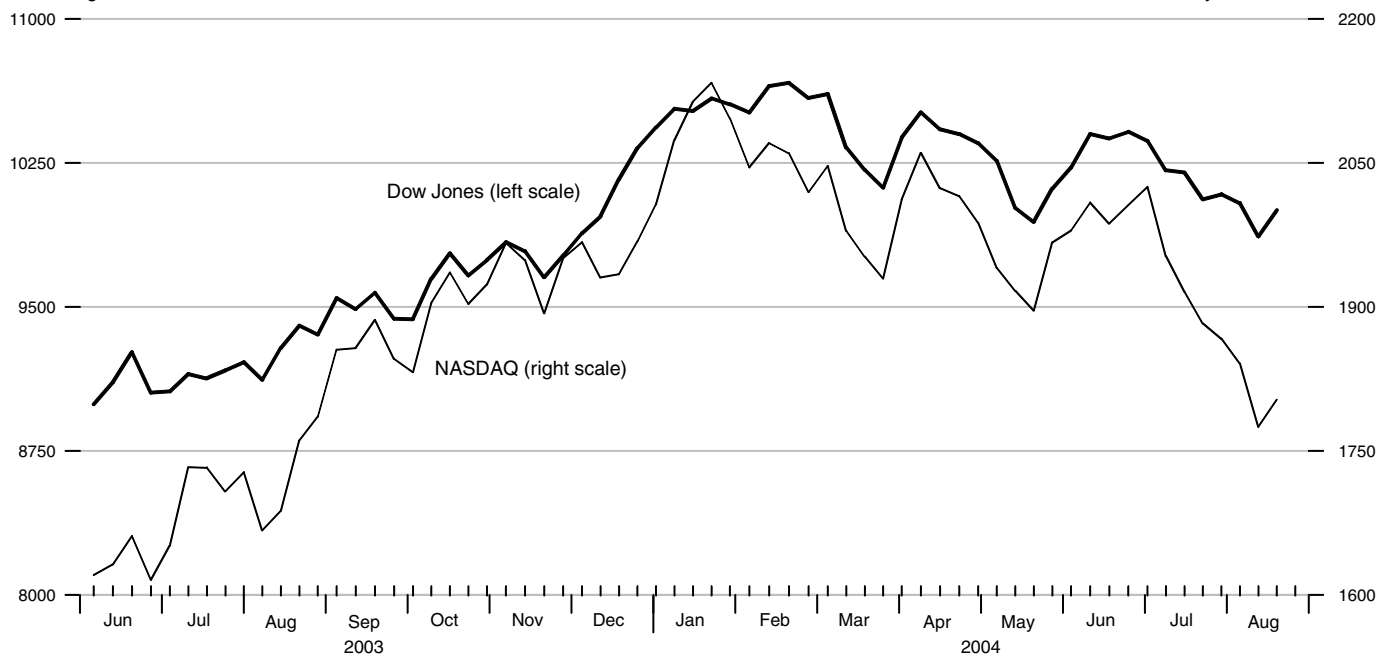


Dow Jones Industrial Average and NASDAQ Composite®

Averages of Daily Figures

Closing Price

February 5, 1971 = 100

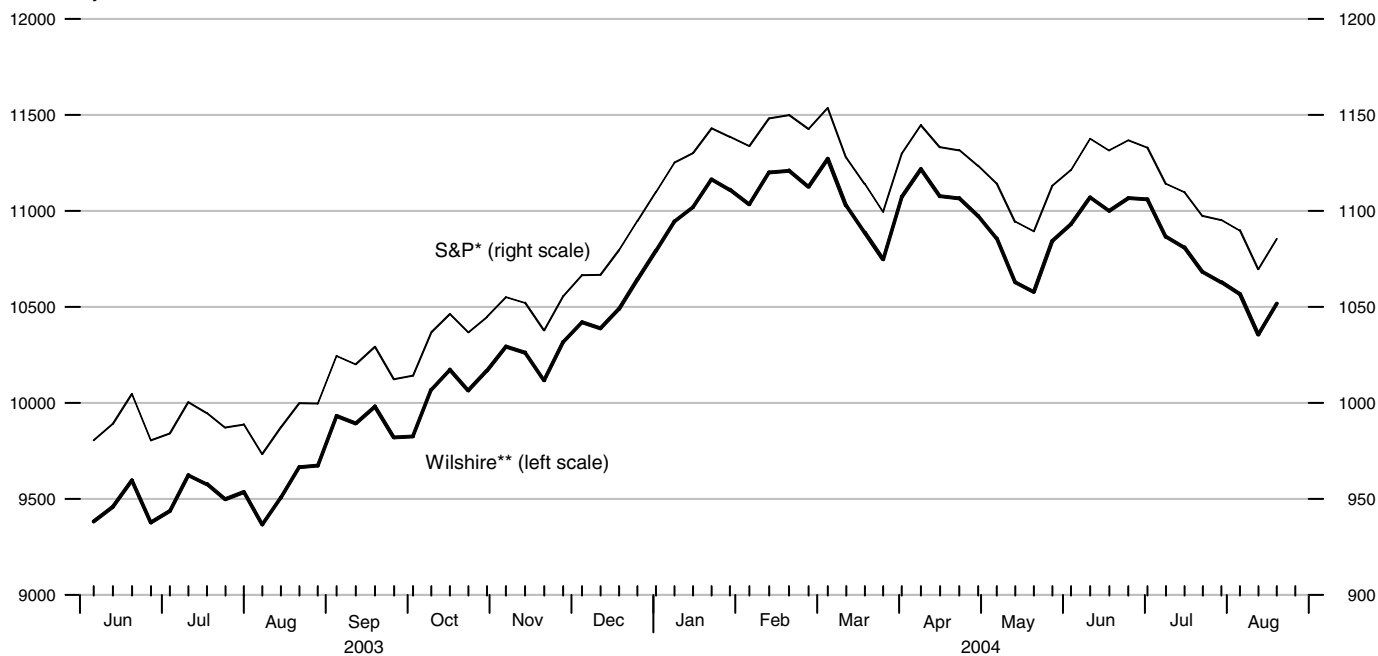


Wilshire 5000® and Standard & Poor's 500

Averages of Daily Figures

January 2, 1980 = 1078.29

1941-43 = 10



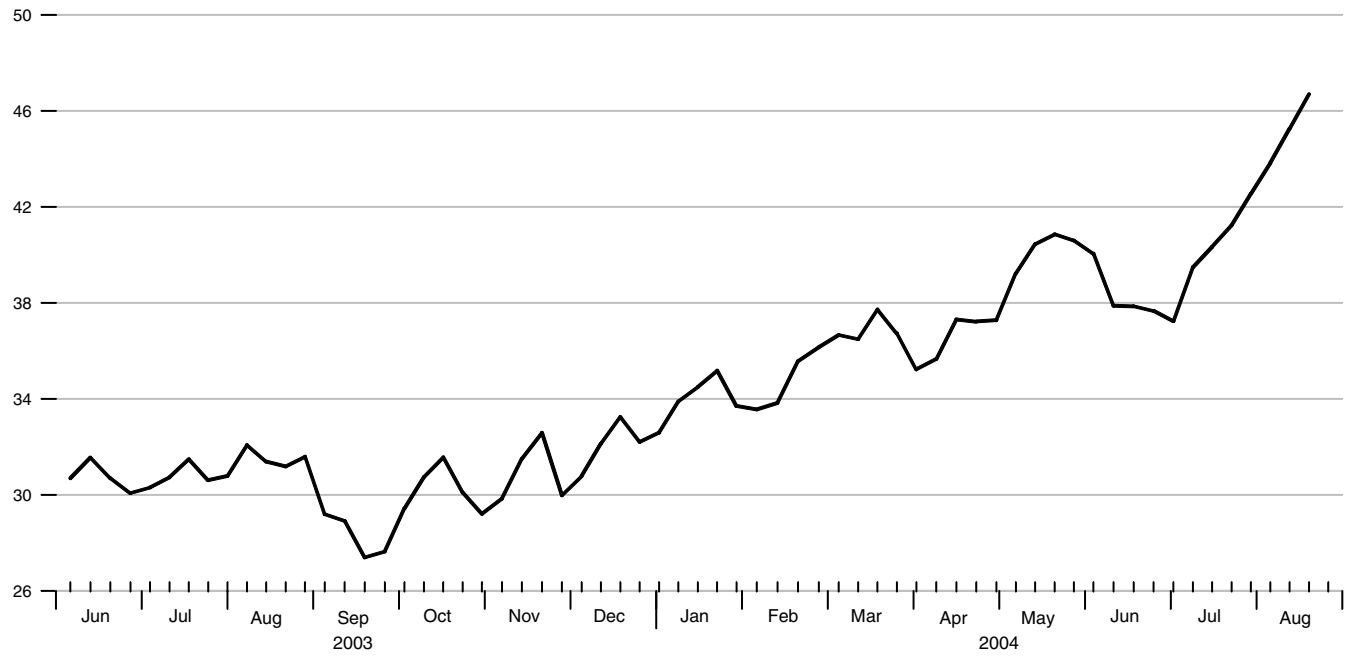
*Copyright © 2003 The McGraw-Hill Companies, Inc. Standard & Poor's including its subsidiary corporations ("S&P") is a division of The McGraw-Hill Companies, Inc. Reproduction of this data in any form is prohibited without S&P's prior written permission.

**Source: Wilshire Associates Incorporated, www.wilshire.com

Crude Oil Spot Prices

West Texas Intermediate, Averages of Daily Figures

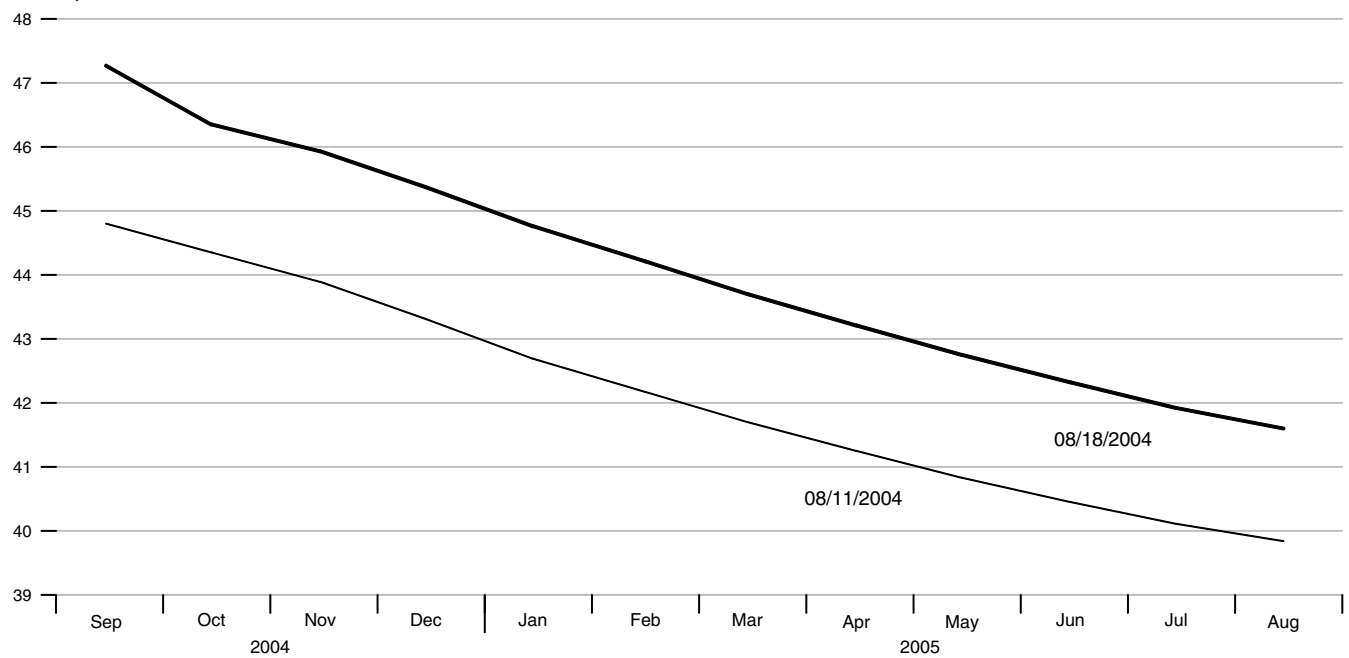
Dollars per barrel



Crude Oil Futures Prices

West Texas Intermediate

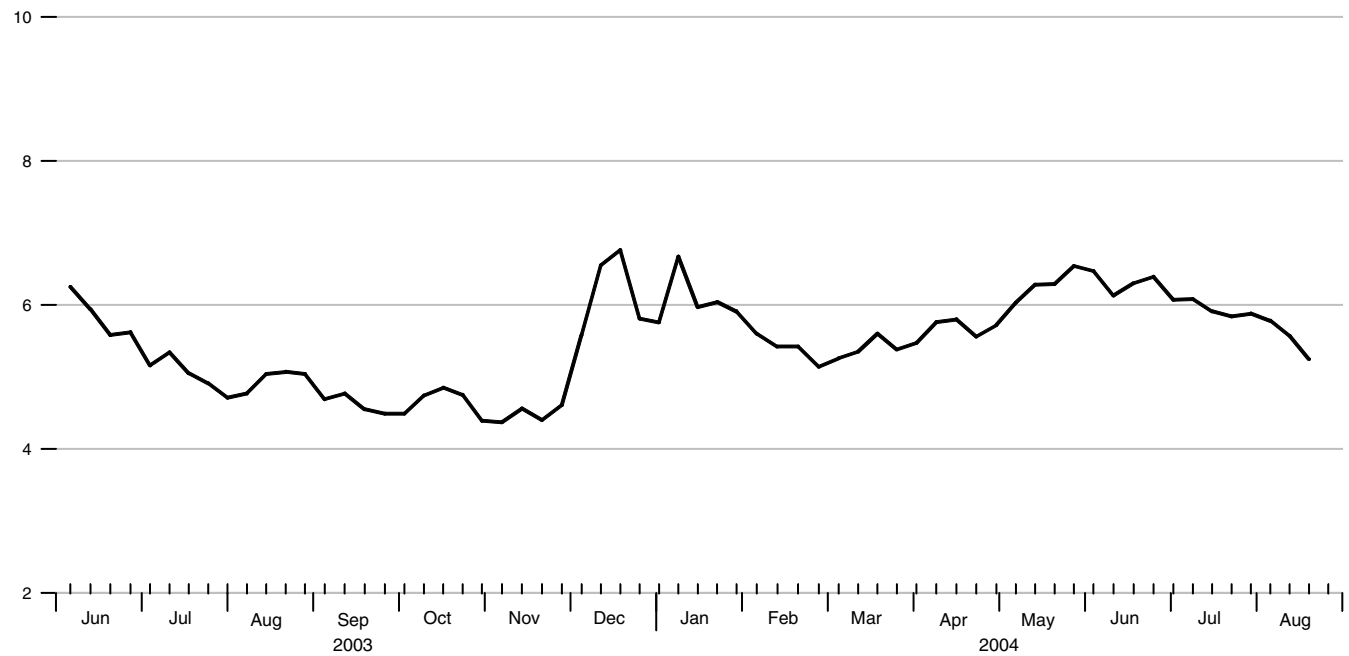
Dollars per barrel



Natural Gas Spot Prices

Henry Hub, Averages of Daily Figures

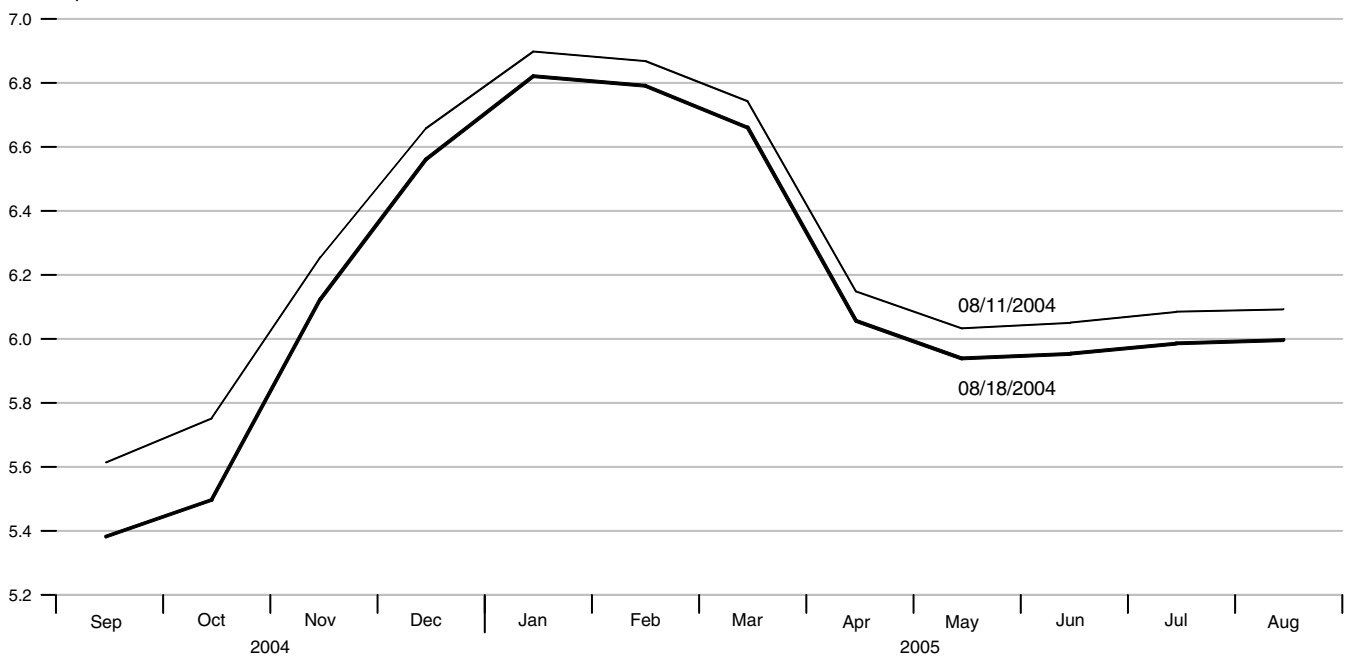
Dollars per million btu



Natural Gas Futures Prices

Henry Hub

Dollars per million btu

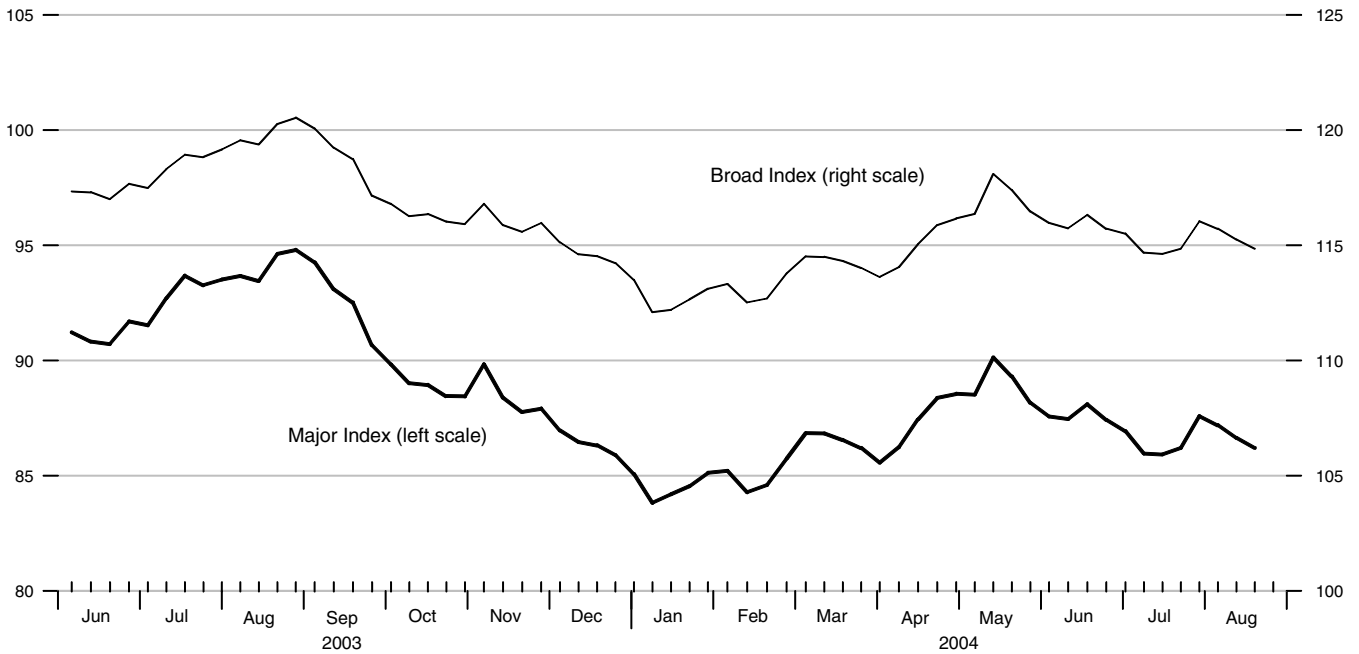


Trade-Weighted Exchange Rate Indexes

Averages of Daily Figures

March 1973=100

January 1987=100

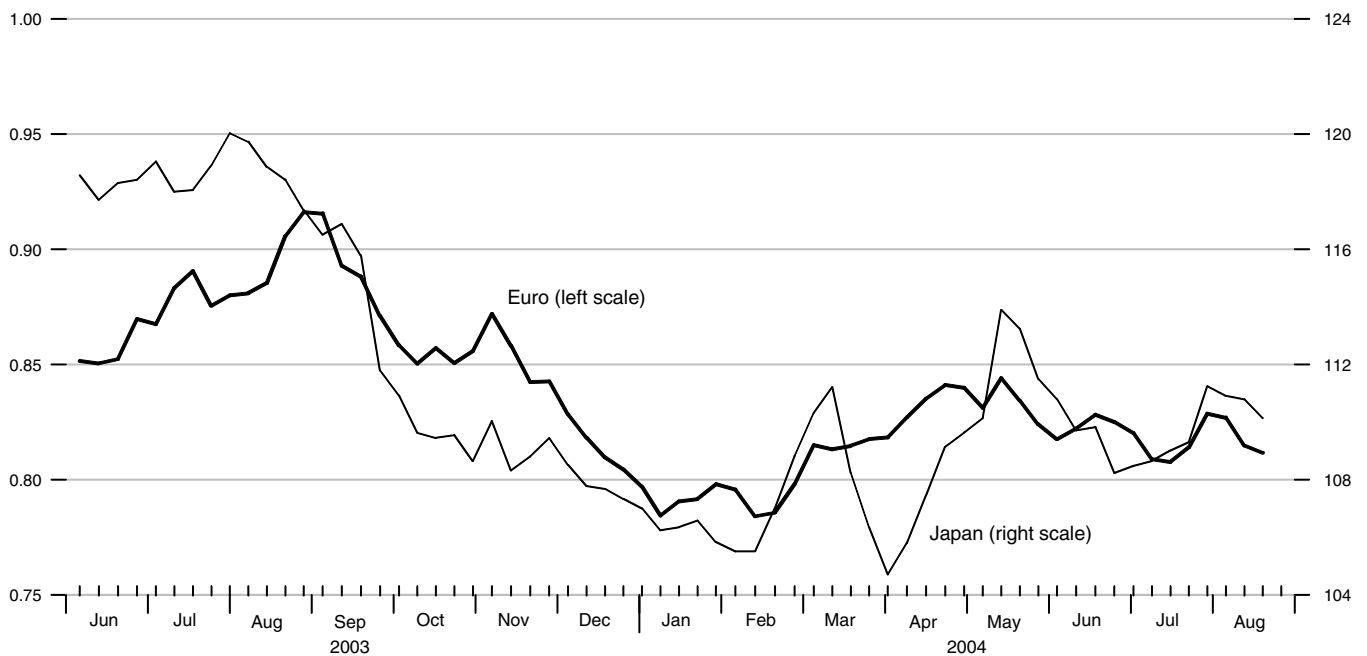


Exchange Rates

Averages of Daily Figures

Euro/US\$

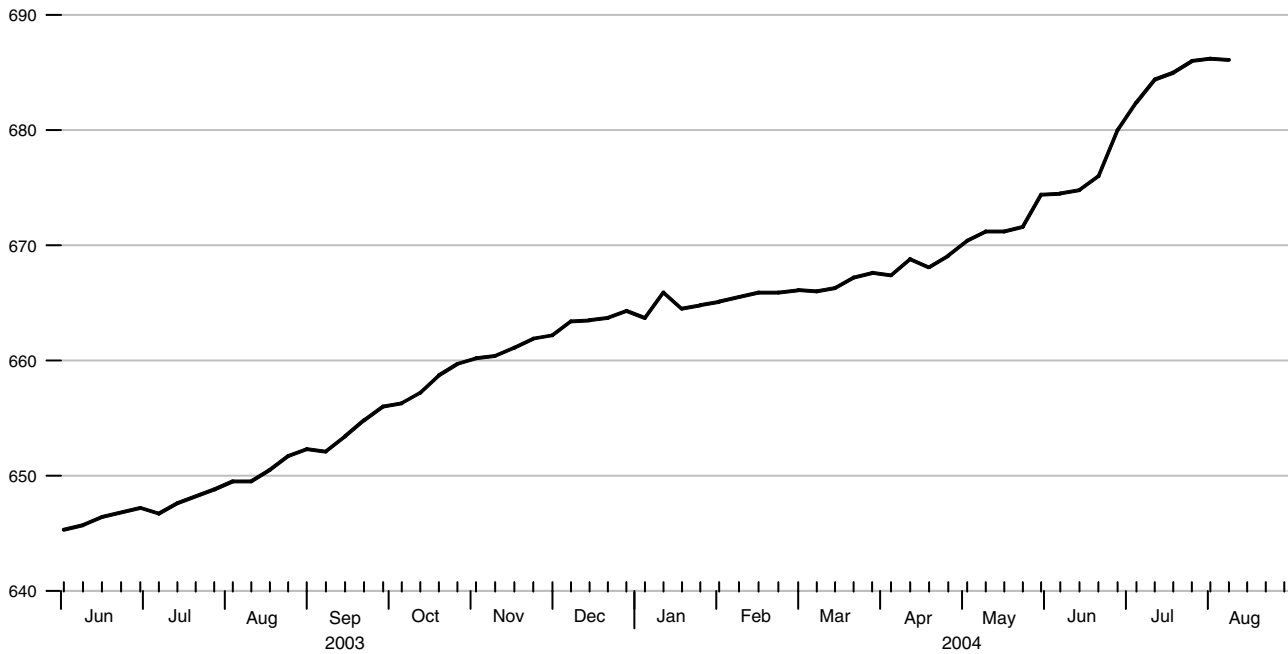
Yen/US\$



Currency Component of M1

Averages of Daily Figures, Seasonally Adjusted

Billions of dollars

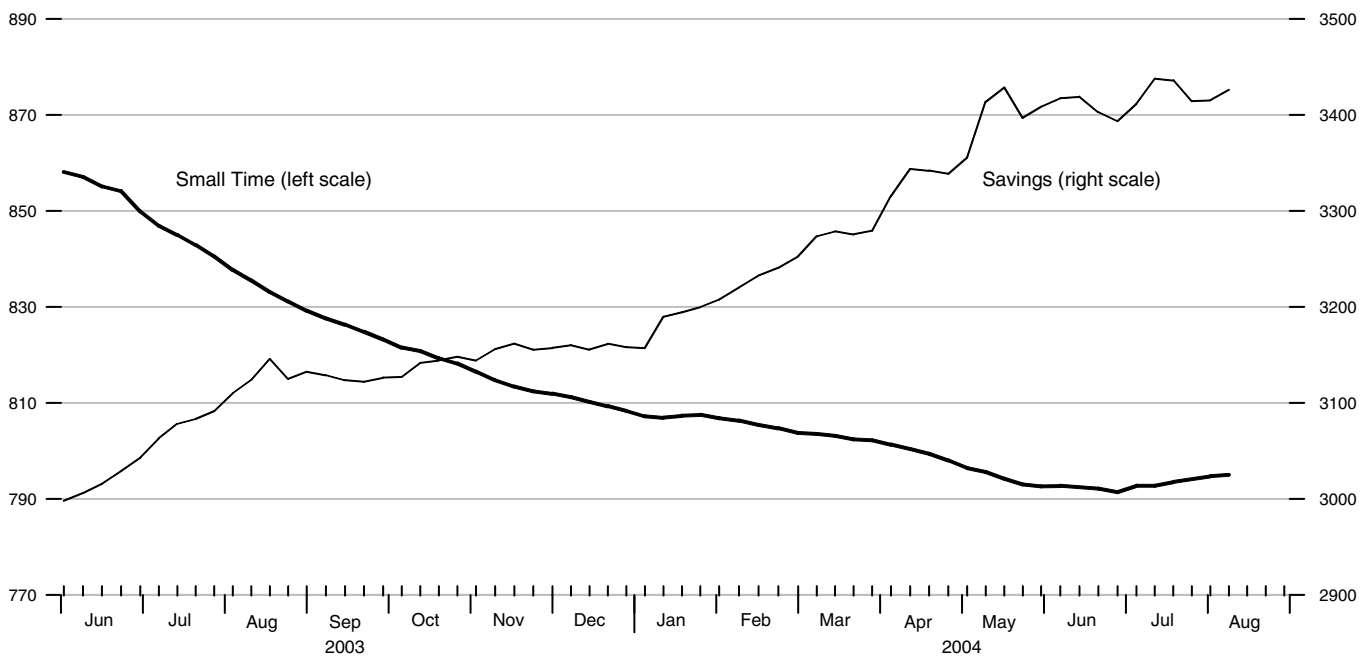


Savings and Small Time Deposits

Averages of Daily Figures, Seasonally Adjusted

Billions of dollars

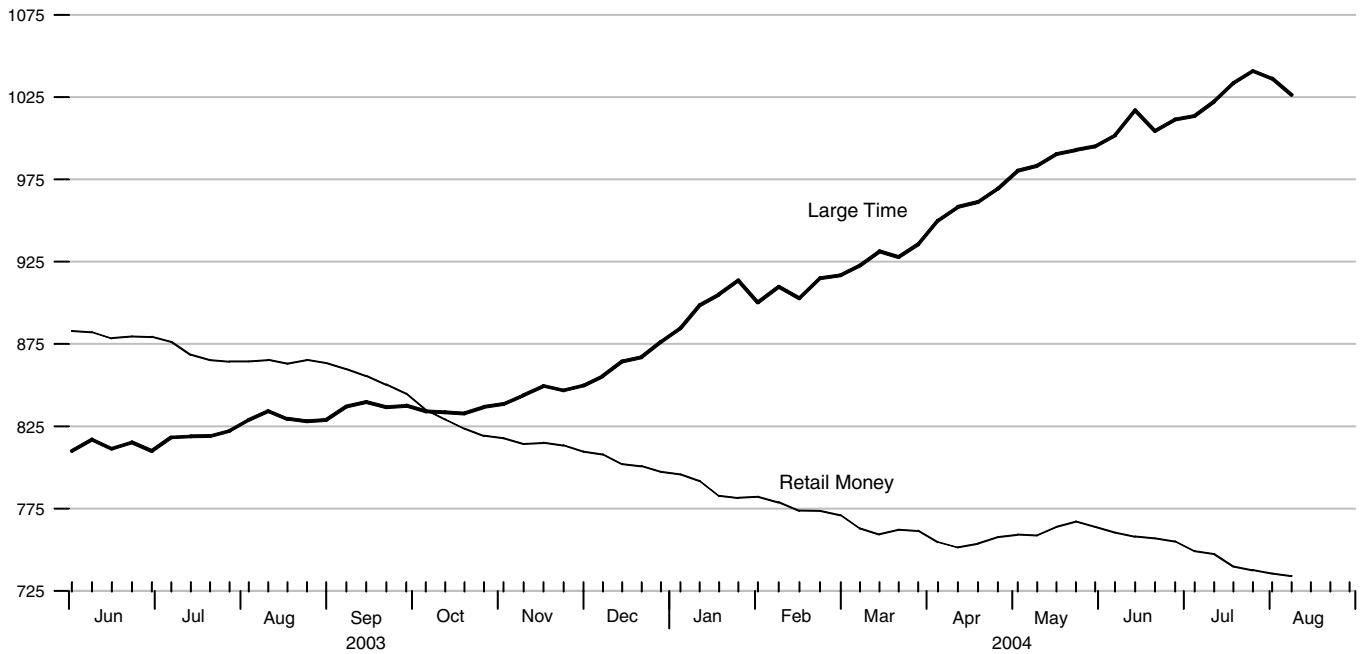
Billions of dollars



Large Time Deposits and Retail Money Funds

Averages of Daily Figures, Seasonally Adjusted

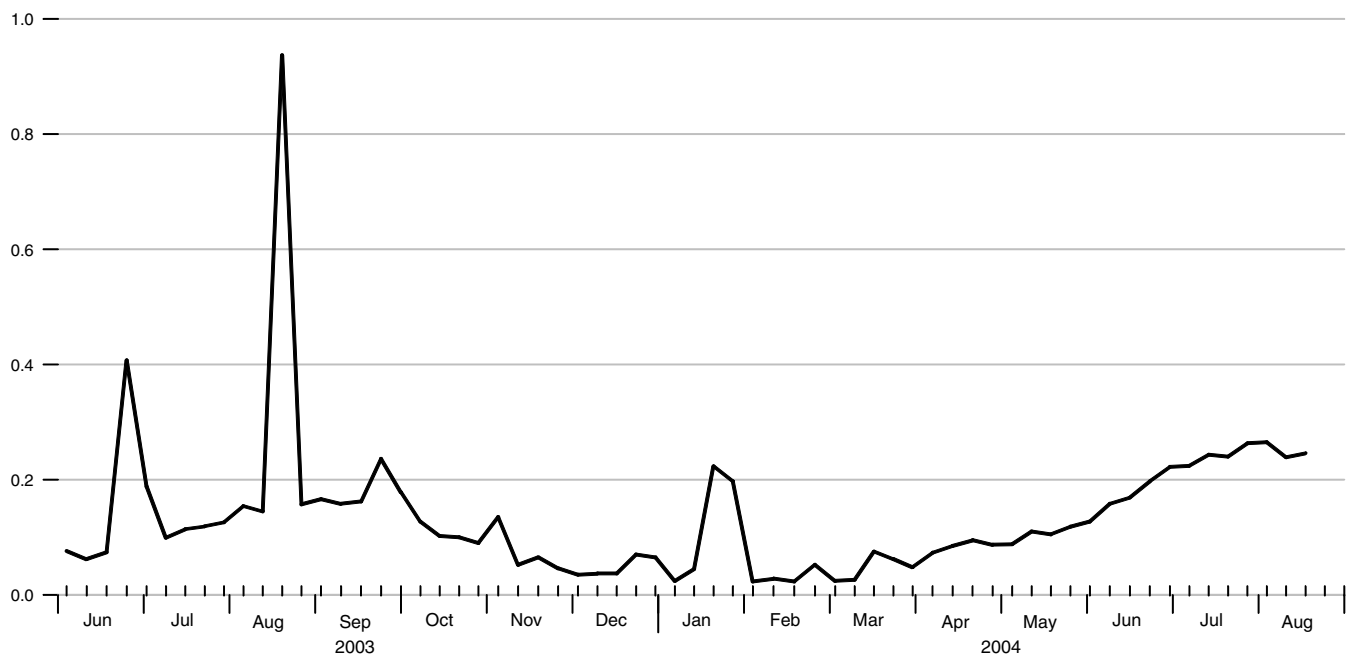
Billions of dollars



Total Borrowings from Federal Reserve Banks

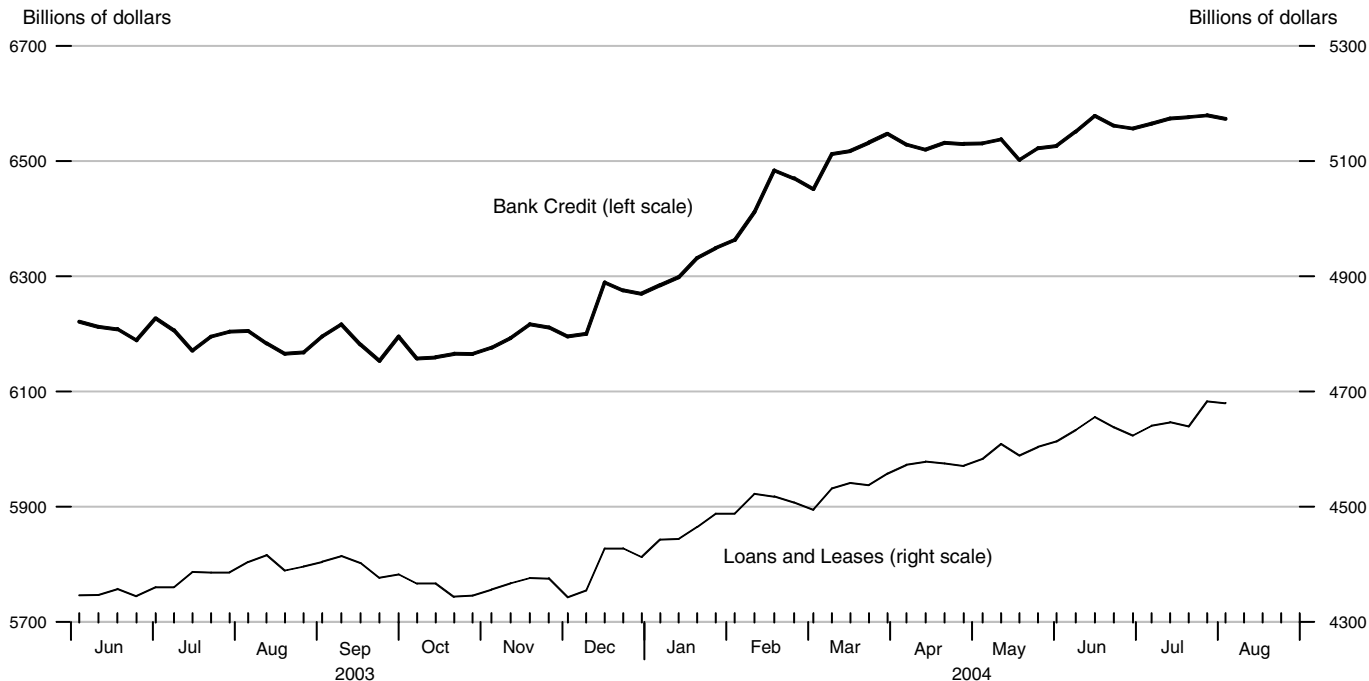
Averages of Daily Figures

Billions of dollars



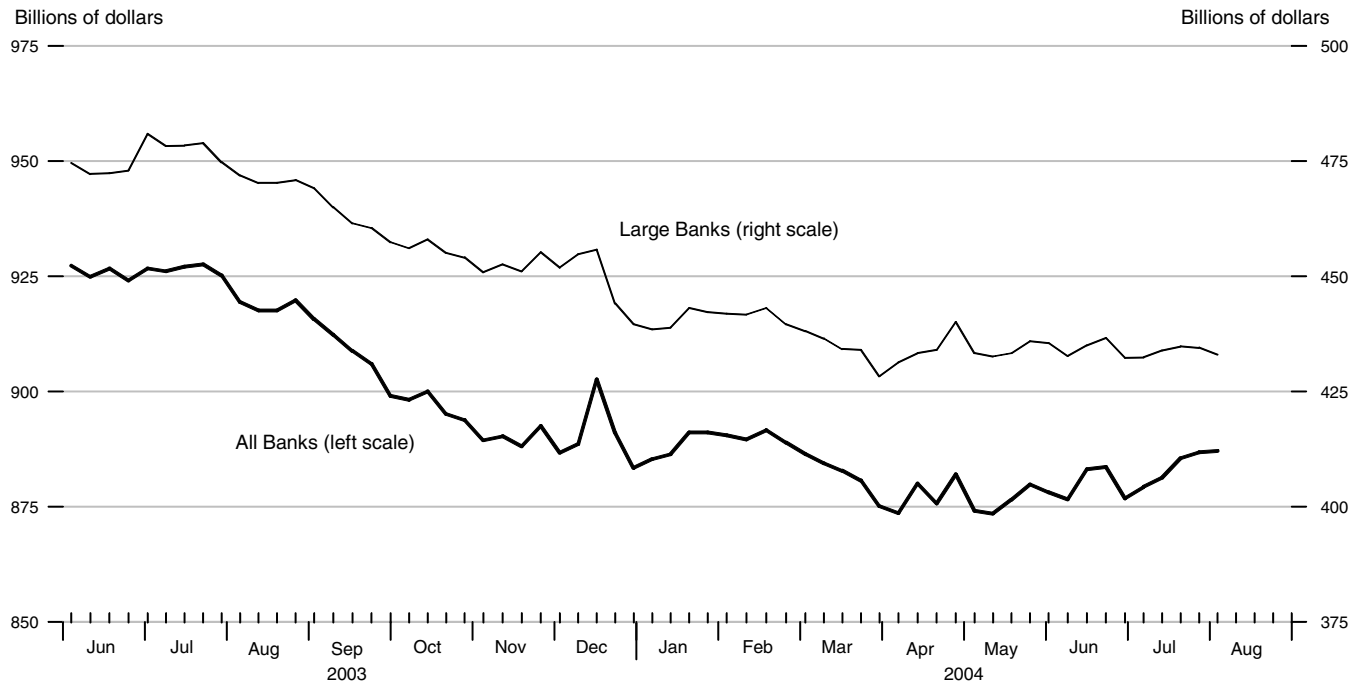
Bank Loans and Credit

All Commercial Banks in the United States, Seasonally Adjusted



Commercial and Industrial Loans

Seasonally Adjusted



Commercial Paper of Nonfinancial Companies

Not Seasonally Adjusted

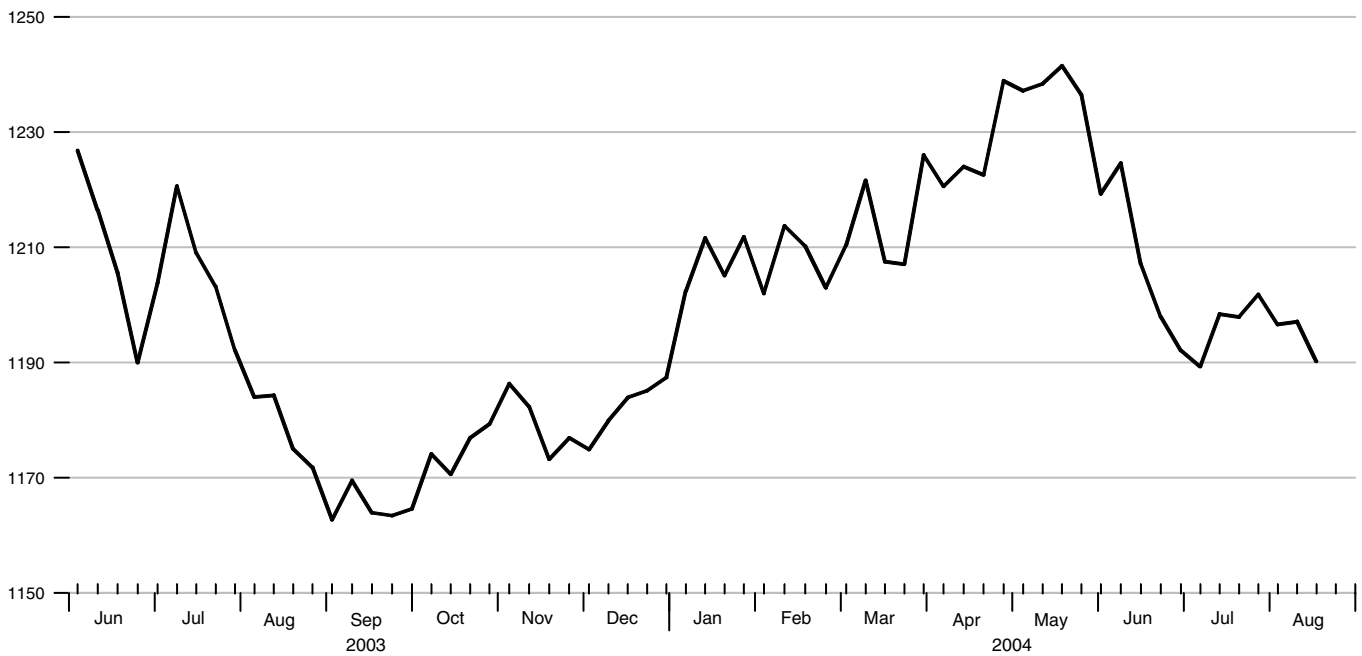
Billions of dollars



Commercial Paper of Financial Companies

Not Seasonally Adjusted

Billions of dollars



Interest Rates

Percent

	30-Day Comm. Paper	90-Day CDs	2-Year Interest Rate Swap	Corporate Aaa Bonds	Corporate Baa Bonds	Municipal Bonds	Federal Funds	3-Month Treasury Bill	2-Year Treasury Securities	5-Year Treasury Securities	10-Year Treasury Securities	20-Year Treasury Securities
May 28	1.00	1.26	2.94	6.00	6.72	5.01	0.99	1.06	2.54	3.83	4.68	5.41
Jun 4	1.01	1.32	3.04	6.04	6.80	5.03	1.01	1.16	2.65	3.91	4.74	5.47
11	1.07	1.41	3.14	6.08	6.84	5.10	0.99	1.25	2.75	3.98	4.80	5.52
18	1.15	1.50	3.24	6.01	6.78	5.05	1.01	1.30	2.84	3.97	4.75	5.46
25	1.18	1.51	3.18	5.97	6.75	5.01	1.00	1.29	2.77	3.89	4.69	5.40
Jul 2	1.26	1.54	3.15	5.92	6.71	4.98	1.11	1.30	2.71	3.81	4.63	5.35
9	1.25	1.52	2.95	5.83	6.63	4.81	1.28	1.28	2.56	3.65	4.49	5.24
16	1.26	1.55	2.99	5.81	6.60	4.85	1.25	1.32	2.58	3.64	4.47	5.22
23	1.31	1.59	3.06	5.78	6.58	4.84	1.25	1.34	2.66	3.67	4.46	5.20
30	1.34	1.63	3.17	5.87	6.66	4.88	1.26	1.43	2.76	3.78	4.56	5.30
Aug 6	1.43	1.65	2.99	5.74	6.56	4.78	1.27	1.45	2.60	3.61	4.41	5.17
13	1.47	1.65	2.85	5.65	6.46	4.70	1.36	1.44	2.51	3.47	4.28	5.06
20*	1.49	1.67	2.83	5.62	6.44	.	1.42	1.46	2.46	3.42	4.23	5.04

*Averages of rates available

Money Stock and Components

Billions of dollars, seasonally adjusted

	M2	MZM	Currency	Small Time	Savings	Large Time	Retail Money
Jun 28	6292.7	6625.7	680.0	791.4	3393.7	1011.5	755.0
Jul 5	6286.9	6585.6	682.4	792.7	3411.5	1013.7	749.0
12	6287.8	6580.5	684.4	792.7	3437.8	1022.4	747.3
19	6286.1	6586.1	685.0	793.5	3436.1	1033.6	739.8
26	6281.8	6590.6	686.0	794.1	3414.4	1040.9	737.6
Aug 2	6282.9	6592.9	686.2	794.7	3415.3	1036.3	735.5
9	6273.1	6579.4	686.1	795.0	3426.0	1026.5	734.0

Reserves and Base

Billions of dollars, seasonally adjusted

	Adjusted Monetary Base	Adjusted Reserves
May 26	772.802	97.061
Jun 9	772.482	96.321
23	774.596	95.500
Jul 7	778.294	95.496
21	783.182	94.620
Aug 4	784.856	95.111
18	782.482	.

Bank Loans and Credit

Billions of dollars, seasonally adjusted

	Bank Credit	Loans and Leases	C&I Loans (All)	C&I Loans (Large)	Comm. Paper (nsa)	Total Borrowings
Jul 7	6565.1	4640.6	879.3	432.4	123.7	0.224
14	6574.1	4646.5	881.3	433.9	126.6	0.243
21	6576.5	4639.3	885.5	434.8	131.0	0.240
28	6579.6	4682.8	886.8	434.5	133.0	0.263
Aug 4	6573.5	4680.0	887.1	433.0	131.8	0.265
11	128.3	0.239
18	130.4	0.246

Exchange Rates

	Major Exchange Rate Index	Broad Exchange Rate Index	Exchange Rate: Euro/\$	Exchange Rate: Yen/\$
Jul 9	86.0	114.7	0.809	108.7
16	85.9	114.6	0.808	109.0
23	86.2	114.9	0.814	109.3
30	87.6	116.0	0.829	111.2
Aug 6	87.2	115.7	0.827	110.9
13	86.6	115.3	0.815	110.8
20*	86.2	114.9	0.812	110.1

*Averages of rates available

Definitions

M1: The sum of currency held outside the vaults of depository institutions, Federal Reserve Banks, and the U.S. Treasury; travelers checks; and demand and other checkable deposits issued by financial institutions (except demand deposits due to the Treasury and depository institutions), minus cash items in process of collection and Federal Reserve float.

M2: M1 plus savings deposits (including money market deposit accounts) and small-denomination (less than \$100,000) time deposits issued by financial institutions; and shares in retail money market mutual funds (funds with initial investments of less than \$50,000), net of retirement accounts.

M3: M2 plus large-denomination (\$100,000 or more) time deposits; repurchase agreements issued by depository institutions; Eurodollar deposits, specifically, dollar-denominated deposits due to nonbank U.S. addresses held at foreign offices of U.S. banks worldwide and all banking offices in Canada and the United Kingdom; and institutional money market mutual funds (funds with initial investments of \$50,000 or more).

Notes

Cover Page: Economic forecasts are median responses from the Thomson Financial Weekly Economic Survey, which is sent out to 20 to 25 Wall Street economists each week (usually on Tuesday). These forecasts are released on Friday—at which time, Thursday's *USFD* cover page will be updated.

Page 3: **Adjusted Monetary Base** equals the sum of currency in circulation outside Federal Reserve Banks and the U.S. Treasury, deposits of depository financial institutions at Federal Reserve Banks, and an adjustment for the effects of changes in statutory reserve requirements on the quantity of base money held by depositories. This series is a spliced chain index; see Anderson and Rasche (1996a, 1996b, 2001, 2003).

Page 4: **Adjusted Reserves** is defined as the sum of vault cash and Federal Reserve Bank deposits held by depository institutions and an adjustment for the effects of changes in statutory reserve requirements on the quantity of base money held by depositories. This series, a spliced chain index, is numerically larger than the Board of Governors' measure, which excludes vault cash not used to satisfy statutory reserve requirements and Federal Reserve Bank deposits used to satisfy required clearing balance contracts; see Anderson and Rasche (1996a, 2001, 2003).

Page 5: **MZM** includes the zero maturity, or immediately available, components of M3. MZM equals M2 minus small-denomination time deposits, plus institutional money market mutual funds (that is, the money market mutual funds included in M3 but excluded from M2). The label MZM, or "Money, Zero Maturity," was coined by William Poole (1991) for this aggregate, proposed earlier by Motley (1988). Readers are cautioned that since early 1994 the level and growth of M1 have been depressed by retail sweep programs that reclassify transactions deposits (demand deposits and other checkable deposits) as savings deposits overnight, thereby reducing banks' required reserves; see Anderson and Rasche (2001) and research.stlouisfed.org/aggreg/swdata.html.

Page 7: Current data appear in the Federal Reserve Board's H.15 release, except for the **Intended Federal Funds Rate**. Federal Funds Rate represents seven-day averages for the week ending two days earlier than the date shown in the release.

Page 8: **10-Year Inflation-Indexed Treasury Yield** is the most

recently issued inflation-indexed bond of 10-year original maturity. **10-Year Inflation-Indexed Treasury Yield Spread** equals the difference between the yield on the most recently issued 10-year inflation-indexed bond and the unadjusted **10-Year Treasury Note Yield** of similar maturity.

Page 9: **Rates on Federal Funds Futures Contracts** trace through time the yield on three specific contracts. **Rates on Federal Funds Futures on Selected Dates** displays a single day's snapshot of yields for contracts expiring in the months shown on the horizontal axis.

Page 11: **Crude Oil** (West Texas intermediate) spot and futures prices are listed in the Wall Street Journal. **Spot Prices** are weekly averages of daily prices; **Futures Prices** are usually taken on Wednesday.

Page 12: **Natural Gas** (Henry Hub) spot and futures prices are listed in the Wall Street Journal. **Spot Prices** are weekly averages of daily prices; **Futures Prices** are usually taken on Wednesday.

Page 13: Data appear in the Federal Reserve Board's H.10 release. The **Major Index** comprises 7 currencies. The **Broad Index** comprises the **Major Index** plus 19 additional currencies. Further details may be found at www.federalreserve.gov/releases/h10/summary/.

Page 14: Data appear in the Federal Reserve Board's H.6 release. **Savings Deposits** is the sum of money market deposit accounts and passbook and statement savings. **Small Time Deposits** have a minimum initial maturity of 7 days. Savings deposits and small time deposits are at all depository institutions.

Page 15: Data appear in the Federal Reserve Board's H.6 release. **Large Time Deposits** are deposits of \$100,000 or more. **Retail Money Funds** are included in M2. Retail money funds were originally called general purpose and broker/ dealer money market funds. Large time deposits and retail money funds are at all depository institutions.

As of January 9, 2003, **Total Borrowings** includes primary, secondary, and seasonal credit. Prior to that, borrowings include seasonal, adjustment, and extended credit.

Page 16: Data appear in the Federal Reserve Board's H.8 release. **Bank Loans and Credit** include foreign-related institutions. **Bank Credit** includes loans and leases and securities. **All Banks** includes foreign-related institutions. **Large Banks** are domestically chartered banks (adjusted for mergers) and report on a weekly basis.

Page 17: Current data appear at www.federalreserve.gov/releases/cp/table1.htm.

Page 18: **Treasury Security** yields are Treasury constant maturities as reported in the Board of Governors of the Federal Reserve System's H.15 release.

The **3-Month Treasury Bill** yield is the secondary market yield from the H.15 release. **Federal Funds** represents seven-day averages for the week ending two days earlier than the date shown in the table. **Municipal Bonds** represents Bond Buyer's Average Index of 20 municipal bonds, Thursday data.

Sources

Board of Governors of the Federal Reserve System

Monetary aggregates and components: H.6 release. Bank credit: H.8 release. Total Borrowings: H.4.1 release. Interest rates: H.15 release. Exchange rates: H.10 release. Commercial paper: Board of Governors web site.

Chicago Board of Trade

Federal funds futures contract.

Dow Jones Indexes

Dow Jones Industrial Average.

Federal Reserve Bank of St. Louis

Adjusted monetary base, adjusted reserves, and MZM.

NASDAQ Stock Market, Incorporated
NASDAQ Composite®.

Standard & Poor's
Standard & Poor's 500 composite index.

U.S. Department of the Treasury
U.S. inflation-indexed security yields.

Wall Street Journal
Oil (West Texas intermediate) and natural gas (Henry Hub) spot and futures prices.

Wilshire Associates Incorporated (www.wilshire.com)
Wilshire 5000®.

References

Anderson, Richard G. and Robert H. Rasche (1996a). "A Revised Measure of the St. Louis Adjusted Monetary Base," Federal Reserve Bank of St. Louis *Review*, March/April, 78(2), pp. 3-13.

____ and ____ (1996b). "Measuring the Adjusted Monetary Base in an Era of Financial Change," Federal Reserve Bank of St. Louis *Review*, November/ December, 78(6), pp. 3-37.

____ and ____ (2001). "Retail Sweep Programs and Bank Reserves, 1994-1999," Federal Reserve Bank of St. Louis *Review*, January/February, pp. 51-72.

____ and ____ , with Jeffrey Loesel (2003). "A Reconstruction of the Federal Reserve Bank of St. Louis Adjusted Monetary Base and Reserves," Federal Reserve Bank of St. Louis *Review*, September/October, 85(5), pp. 39-70.

Motley, Brian (1988). "Should M2 Be Redefined?" Federal Reserve Bank of San Francisco *Economic Review*, Winter, pp. 33-51.

Poole, William (1991). Statement before the Subcommittee on Domestic Monetary Policy of the Committee on Banking, Finance and Urban Affairs, U.S. House of Representatives, November 6, 1991. Government Printing Office, Serial No. 102-82.

Note: Articles from this Bank's *Review* are available on the Internet at research.stlouisfed.org/publications/review/.