

Published on Wednesday and Saturday, morning, at No. 6 Tontine Building, Wall-street, at six o'clock per annum; single copies, 10 cents. The Letters from the Editors are published on Friday, at 10 o'clock per annum; single copies, 10 cents. Advertisements inserted on favorable terms. Subscriptions out of the City, in advance.

W. HERRITT, E. & CLAYTON, Proprietors.

VESSELS UP FOR FOREIGN PORTS.

Table listing shipping schedules for various ports including Antwerp, Hamburg, London, Madras, New York, and others. Columns include ship names, destinations, and departure dates.

FOR DISTANT PORTS IN UNITED STATES.

Table listing shipping schedules for distant ports within the United States, including destinations like Philadelphia, Baltimore, and New Orleans.

ARRIVED.

Table listing ships that have arrived, including ship names, origins, and arrival dates.

MARINE LIST.

Large table listing the names and details of various ships, including their owners, destinations, and other relevant information.

Large table listing shipping schedules for various ports including Antwerp, Hamburg, London, Madras, New York, and others. Columns include ship names, destinations, and departure dates.

Large table listing shipping schedules for various ports including Antwerp, Hamburg, London, Madras, New York, and others. Columns include ship names, destinations, and departure dates.

FOR NEW-ORLEANS.

Direct. The steamship Atlantic, to New Orleans, via New York, will sail on the 10th of September, at 10 o'clock.

FOR NEW-YORK.

Wanted in Great Britain. A full-sized Schooner, of 600 bbls. for a voyage to the West India, and on home.

FOR SALE.

The copper-plate and copier-plate ship Mercury, of 100 tons, built in 1848, and recently undergone thorough repairs.

FOR NEW-YORK.

Wanted in Great Britain. A full-sized Schooner, of 600 bbls. for a voyage to the West India, and on home.

FOR SALE.

The copper-plate and copier-plate ship Mercury, of 100 tons, built in 1848, and recently undergone thorough repairs.

FOR NEW-YORK.

Wanted in Great Britain. A full-sized Schooner, of 600 bbls. for a voyage to the West India, and on home.

FOR SALE.

The copper-plate and copier-plate ship Mercury, of 100 tons, built in 1848, and recently undergone thorough repairs.

FOR NEW-YORK.

Wanted in Great Britain. A full-sized Schooner, of 600 bbls. for a voyage to the West India, and on home.

FOR SALE.

The copper-plate and copier-plate ship Mercury, of 100 tons, built in 1848, and recently undergone thorough repairs.

FOR NEW-YORK.

Wanted in Great Britain. A full-sized Schooner, of 600 bbls. for a voyage to the West India, and on home.

FOR SALE.

The copper-plate and copier-plate ship Mercury, of 100 tons, built in 1848, and recently undergone thorough repairs.

FOR NEW-YORK.

Wanted in Great Britain. A full-sized Schooner, of 600 bbls. for a voyage to the West India, and on home.

FOR SALE.

The copper-plate and copier-plate ship Mercury, of 100 tons, built in 1848, and recently undergone thorough repairs.

FOR NEW-YORK.

Wanted in Great Britain. A full-sized Schooner, of 600 bbls. for a voyage to the West India, and on home.

FOR SALE.

The copper-plate and copier-plate ship Mercury, of 100 tons, built in 1848, and recently undergone thorough repairs.

NEW-YORK AND LIVERPOOL PACKETS.

The Proprietors of the several Lines of Packets between New-York and Liverpool, arranged for their sailing from each port on the 1st, 15th, 18th, 21st, 24th, 27th, 30th, and 31st of each month, at the following times:

Table listing shipping schedules for New-York and Liverpool packets, including ship names, destinations, and departure dates.

FOR NEW-ORLEANS.

Direct. The steamship Atlantic, to New Orleans, via New York, will sail on the 10th of September, at 10 o'clock.

FOR NEW-YORK.

Wanted in Great Britain. A full-sized Schooner, of 600 bbls. for a voyage to the West India, and on home.

FOR SALE.

The copper-plate and copier-plate ship Mercury, of 100 tons, built in 1848, and recently undergone thorough repairs.

FOR NEW-YORK.

Wanted in Great Britain. A full-sized Schooner, of 600 bbls. for a voyage to the West India, and on home.

FOR SALE.

The copper-plate and copier-plate ship Mercury, of 100 tons, built in 1848, and recently undergone thorough repairs.

FOR NEW-YORK.

Wanted in Great Britain. A full-sized Schooner, of 600 bbls. for a voyage to the West India, and on home.

FOR SALE.

The copper-plate and copier-plate ship Mercury, of 100 tons, built in 1848, and recently undergone thorough repairs.

FOR NEW-YORK.

Wanted in Great Britain. A full-sized Schooner, of 600 bbls. for a voyage to the West India, and on home.

FOR SALE.

The copper-plate and copier-plate ship Mercury, of 100 tons, built in 1848, and recently undergone thorough repairs.

FOR NEW-YORK.

Wanted in Great Britain. A full-sized Schooner, of 600 bbls. for a voyage to the West India, and on home.

FOR SALE.

The copper-plate and copier-plate ship Mercury, of 100 tons, built in 1848, and recently undergone thorough repairs.

FOR NEW-YORK.

Wanted in Great Britain. A full-sized Schooner, of 600 bbls. for a voyage to the West India, and on home.

FOR SALE.

The copper-plate and copier-plate ship Mercury, of 100 tons, built in 1848, and recently undergone thorough repairs.

FOR NEW-YORK.

Wanted in Great Britain. A full-sized Schooner, of 600 bbls. for a voyage to the West India, and on home.

FOR SALE.

The copper-plate and copier-plate ship Mercury, of 100 tons, built in 1848, and recently undergone thorough repairs.





IMPORTATIONS AT NEW YORK

Imports from various countries including sugar, coffee, and other commodities. Lists include 'SUGAR', 'COFFEE', 'TEA', 'RICE', 'WHEAT', etc., with details on quantities and agents.

DEWINGS AND BROS

Advertisement for Dewings and Bros, listing various goods and services. Includes 'SUGAR', 'COFFEE', 'TEA', 'RICE', 'WHEAT', etc.

WINE AND SPIRITS

Advertisement for wine and spirits, listing various brands and types. Includes 'WINE', 'SPIRITS', 'BRANDY', 'VINEGAR', etc.

WATERBURY FACTORY

Advertisement for Waterbury Factory, listing various goods and services. Includes 'WATERBURY FACTORY', 'WATERBURY', etc.

STRAW PAPER

Advertisement for straw paper, listing various types and quantities. Includes 'STRAW PAPER', 'PAPER', etc.

IVORY MANUFACTORY

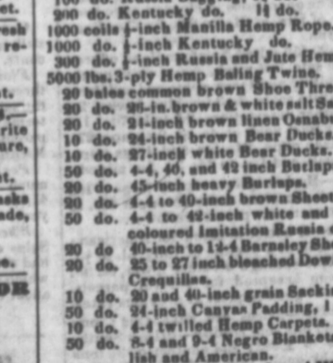
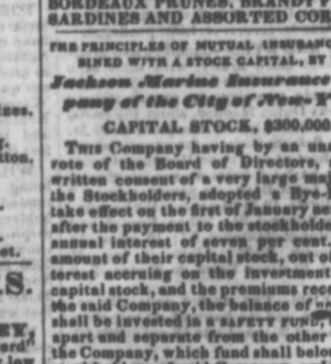
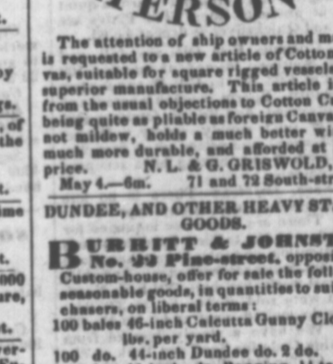
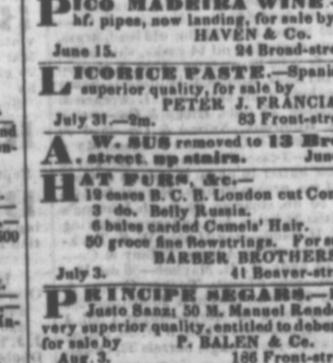
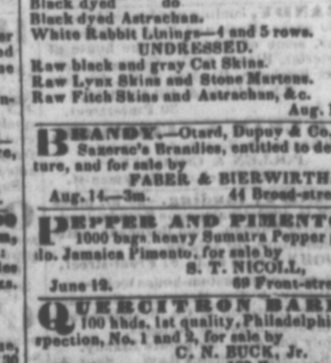
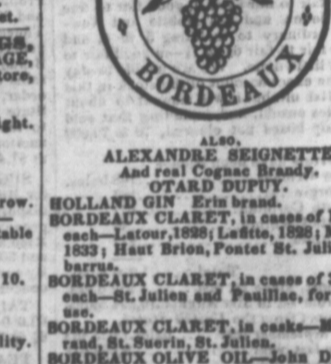
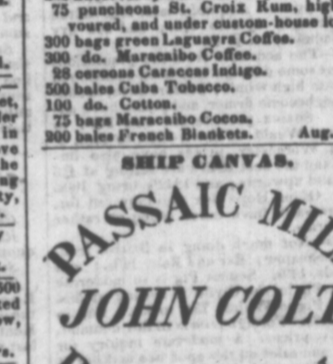
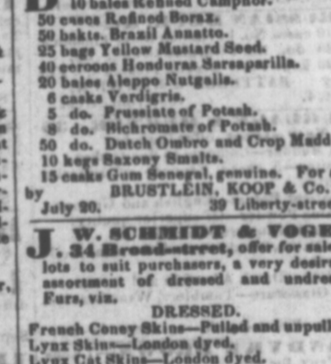
Advertisement for Ivory Manufactory, listing various goods and services. Includes 'IVORY MANUFACTORY', 'IVORY', etc.

WOLFF'S

Advertisement for Wolff's, listing various goods and services. Includes 'WOLFF'S', 'WOLFF', etc.

WOLFF'S COLOGNE

Advertisement for Wolff's Cologne, listing various goods and services. Includes 'WOLFF'S COLOGNE', 'WOLFF'S', etc.



Small text at the bottom of the page, possibly a date or page number.

Small text at the bottom of the page, possibly a date or page number.

Small text at the bottom of the page, possibly a date or page number.

Small text at the bottom of the page, possibly a date or page number.