

LITTLE ROCK METROPOLITAN AREA

SELECTED ECONOMIC INDICATORS

**Prepared by Research Department
Federal Reserve Bank of St. Louis
September 27, 1962**

LITTLE ROCK ECONOMIC INDICATORS

	Industrial Use of Electric Power		Total Employment		Department Store Sales		Check Payments		Total Deposits ^{1/}		Business Loans by Banks ^{1/}	
	Millions of Kilowatt Hrs.	1957-59=100 Index **	Thousands of Persons	1957-59=100 Index *	Unadjusted Index	1957-59=100 Index **	Millions of Dollars	1957-59=100 Index **	Millions of Dollars	1957-59=100 Index *	Millions of Dollars	1957-59=100 Index *
<u>1960</u>												
Jan.	7.57	120.7	95	105.2	74.9	98.3	243	112.5	163	107.7	29	118.6
Feb.	7.20	124.9	96	105.2	68.4	96.5	228	110.3	160	105.8	29	124.6
Mar.	6.78	126.7	97	104.5	71.7	97.5	256	110.7	163	105.0	29	124.6
Apr.	6.71	127.5	102	107.4	106.9	98.8	237	109.6	158	106.2	29	125.8
May	5.66	124.1	102	106.1	98.4	99.7	251	110.6	155	106.7	29	125.4
June	5.85	122.8	102	106.5	77.8	98.3	256	109.5	158	106.3	30	129.7
July	6.48	122.5	101	106.4	86.8	97.3	234	110.7	160	106.4	32	135.2
Aug.	6.27	125.8	102	106.5	91.6	96.8	243	109.6	168	108.7	31	134.3
Sept.	6.93	126.5	104	107.2	95.3	96.4	241	110.4	170	110.5	31	133.9
Oct.	8.70	125.3	105	107.0	115.6	96.2	259	110.7	163	109.0	34	140.7
Nov.	8.62	122.8	103	107.5	107.5	96.2	255	110.0	161	109.2	34	140.7
Dec.	7.54	116.3	101	107.8	171.0	94.3	248	111.9	165	109.9	38	149.6
<u>1961</u>												
Jan.	6.77	119.4	97	107.4	69.1	95.3	255	111.3	167	111.2	37	152.5
Feb.	7.22	121.1	98	107.5	69.6	96.1	227	114.5	172	114.4	36	153.0
Mar.	6.58	125.9	100	107.7	82.7	98.5	276	113.4	180	116.8	36	153.4
Apr.	6.28	125.6	100	106.2	95.3	97.1	237	116.3	176	118.1	35	152.5
May	6.09	128.1	102	106.6	92.5	96.7	280	116.5	177	121.8	36	154.2
June	6.53	127.4	102	106.7	78.1	94.0	270	119.0	177	119.1	35	150.0
July	6.35	127.4	101	106.4	80.8	94.8	258	118.6	179	118.5	35	148.7
Aug.	6.47	126.4	102	106.6	91.4	94.1	261	117.1	180	116.7	34	149.6
Sept.	6.77	125.1	103	105.8	94.5	93.2	245	118.0	172	112.1	34	147.9
Oct.	8.40	127.9	105	106.5	105.2	93.7	289	118.9	177	118.4	34	144.1
Nov.	9.63	134.9	103	106.9	110.0	94.7	279	119.9	176	119.2	36	148.3
Dec.	9.14	135.7	100	106.3	175.7	93.0	263	121.9	181	120.6	38	147.9
<u>1962</u>												
Jan.	7.76	140.0	97	106.9	62.9	93.1	284	121.3	185	123.1	36	149.6
Feb.	8.34	142.5	100	108.8	69.1	89.7	244	123.3	187	124.4	36	150.8
Mar.	7.96	149.7	101	109.2	77.5	95.7	290	124.6	189	122.7	34	147.9
Apr.	7.65	147.7	103	109.0	93.2	96.3	279	127.4	187	123.4	34	149.1
May	6.81	145.7	105	109.3	98.2	98.6	300	128.5	186	127.2	36	151.7
June	7.11	139.3	105	109.3	76.2	96.6	291	129.8	185	124.4	36	156.8
July	6.77	137.2	104	108.9	84.6	96.1	293	131.9	188	124.6	36	153.0
Aug.	6.91	130.5 ^e	103	107.5	93.6	97.0 ^e	296	134.9 ^e	193	125.3	36	157.6
Sept.												
Oct.												
Nov.												
Dec.												

* Seasonally adjusted

** Three-month moving averages of seasonally adjusted data

e - Estimated on the basis of two months only

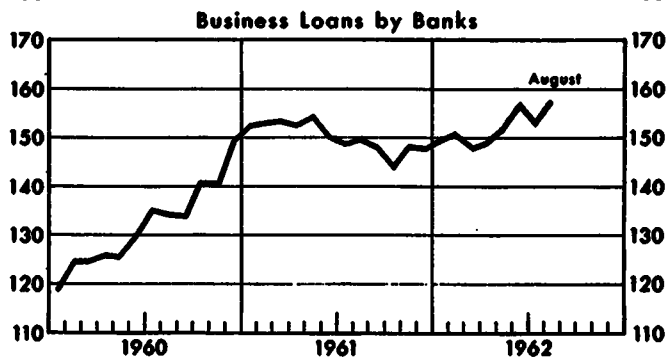
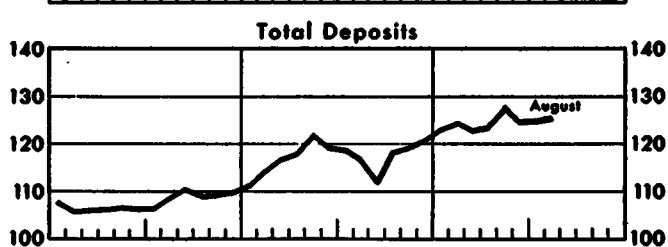
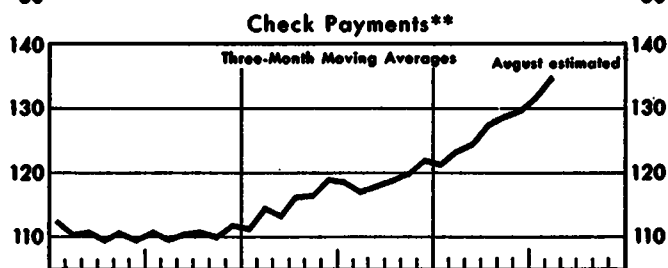
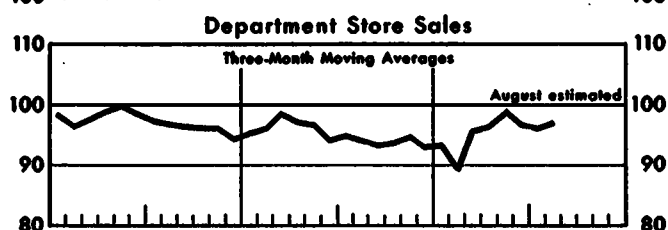
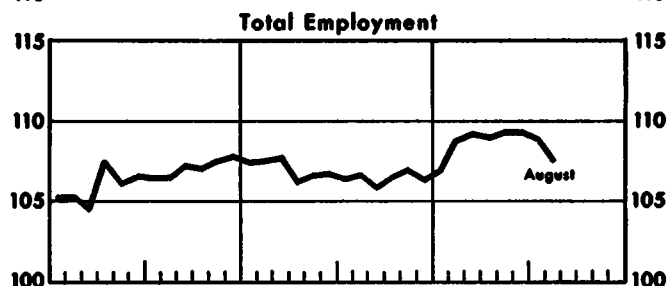
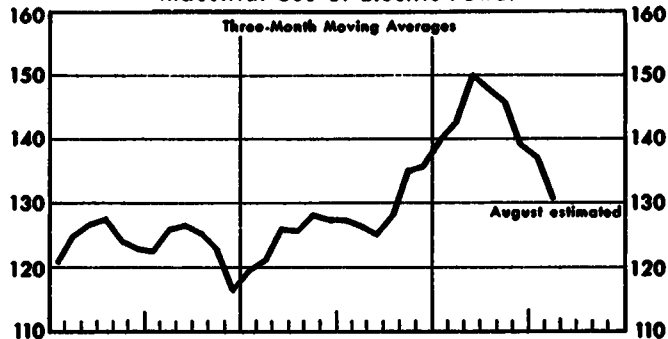
^{1/} Weekly reporting banks

Prepared by Research Department
Federal Reserve Bank of St. Louis

Little Rock Metropolitan Area Selected Economic Indicators

Seasonally Adjusted

1957-59=100 Industrial Use of Electric Power 1957-59=100



**Debits to demand deposit accounts, except interbank and U.S. Government accounts.

Prepared by Research Department
Federal Reserve Bank of St. Louis