

National *Economic Trends*

February 2015

This publication contains charts and tables
compiled by the Data Desk staff
of the Federal Reserve Bank of St. Louis.

The data are related to the state of the U.S. economy: output, inflation,
labor markets, interest rates, government budgets, international trade, and more.



CENTRAL TO AMERICA'S ECONOMY[®]

STLOUISFED.ORG

Contents

Page

3	Economy at a Glance
4	Output and Growth
7	Interest Rates
8	Inflation and Prices
10	Labor Markets
12	Consumer Spending
14	Investment Spending
16	Government Revenues, Spending, and Debt
18	International Trade
20	Productivity and Profits
22	FOMC Economic Projections
24	Quick Reference Tables
29	Notes and Sources

Conventions used in this publication:

1. Shaded areas indicate recessions, as determined by the National Bureau of Economic Research.
2. *Percent change* refers to simple percent changes. *Percent change from year ago* refers to the percent change from the same month or quarter during the previous year. *Compounded annual rate of change* shows what the growth rate would be over an entire year if the same simple percent change continued for four quarters or twelve months. The compounded annual rate of change of x between the previous quarter $t-1$ and the current quarter t is: $[(x_t/x_{t-1})^4 - 1] \times 100$. For monthly data replace 4 with 12.
3. All data with significant seasonal patterns are adjusted accordingly, unless labeled NSA.
4. This issue incorporates revised estimates of national income and product accounts data that were released by the Bureau of Economic Analysis (BEA) in the comprehensive revision on July 31, 2013. Besides the availability of new and revised source data, the reference year for chain-type price indexes and chained-dollar estimates was changed from 2005 to 2009. The BEA will not release the full history all at once. For more information, see <http://www.bea.gov/national/an1.htm#2013comprehensive>.

We welcome your comments addressed to:

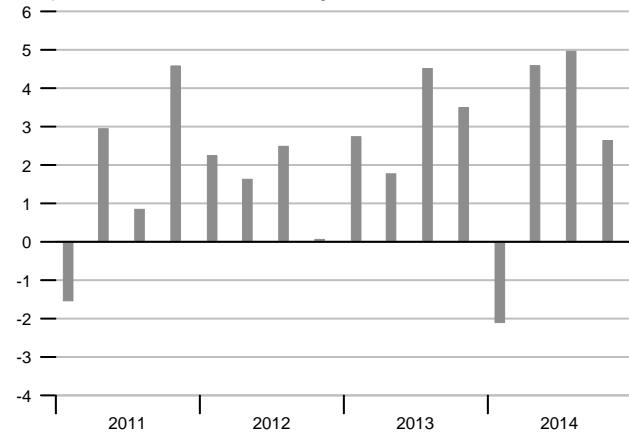
Editor, *National Economic Trends*
Research Division
Federal Reserve Bank of St. Louis
P.O. Box 442
St. Louis, MO 63166-0442

or to:

stlsFRED@stls.frb.org

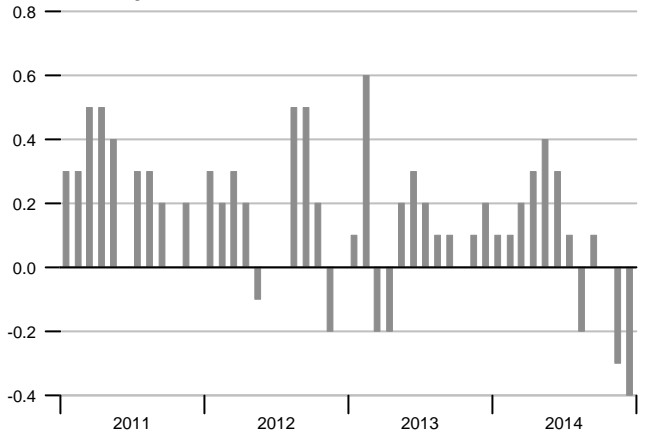
Real GDP Growth

Compounded annual rates of change



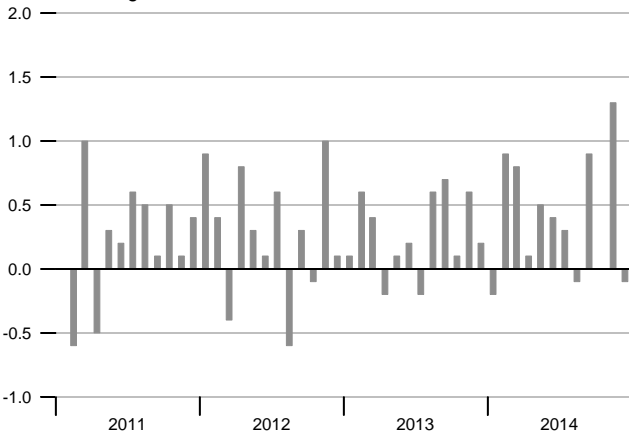
Consumer Price Index

Percent change



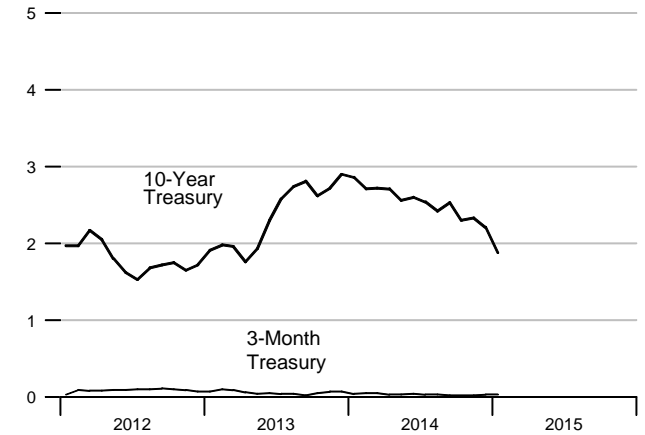
Industrial Production

Percent change



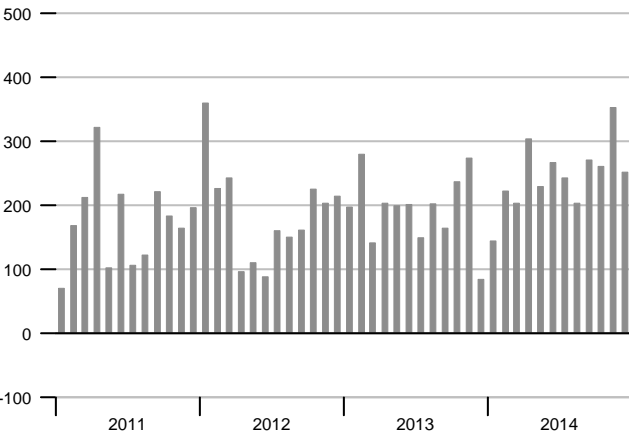
Interest Rates

Percent



Change in Nonfarm Payrolls

Thousands



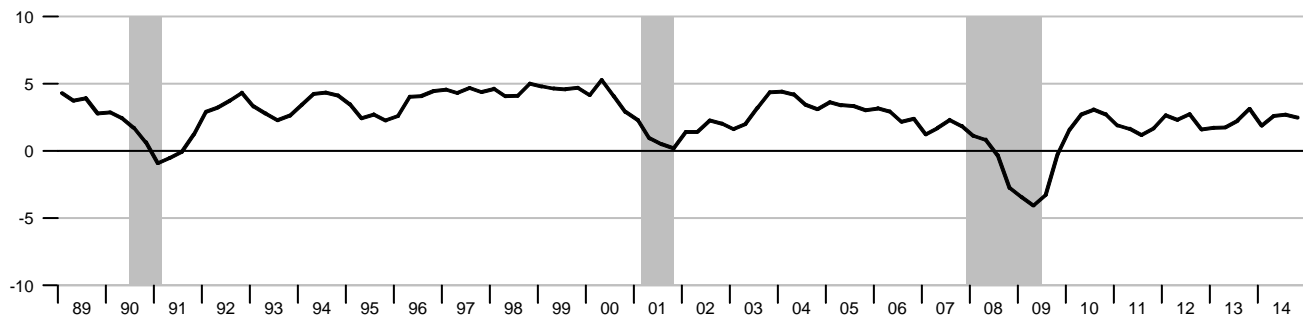
Unemployment Rate

Percent of labor force



Real Gross Domestic Product

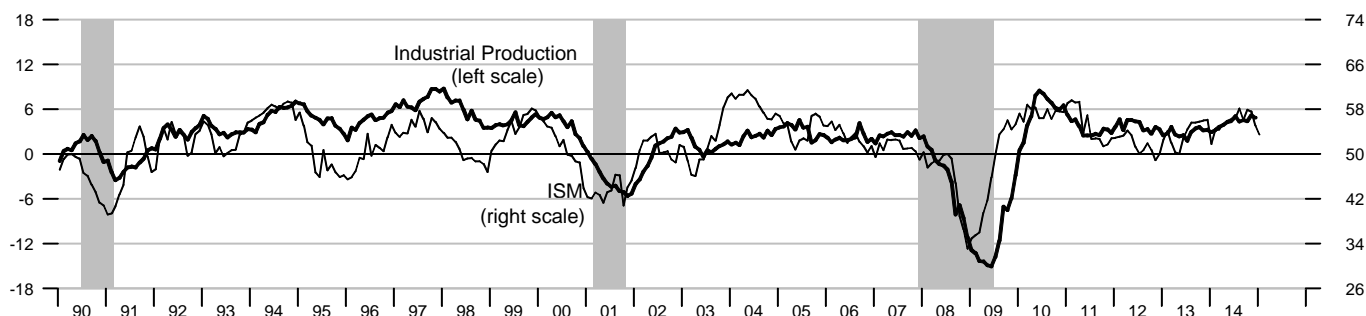
Percent change from year ago



Industrial Production and Institute for Supply Management (ISM) Indexes

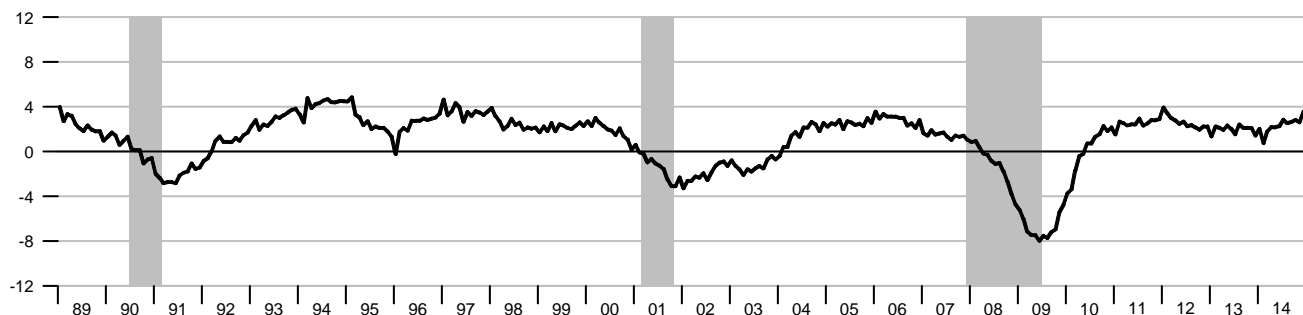
Percent change from year ago

Index



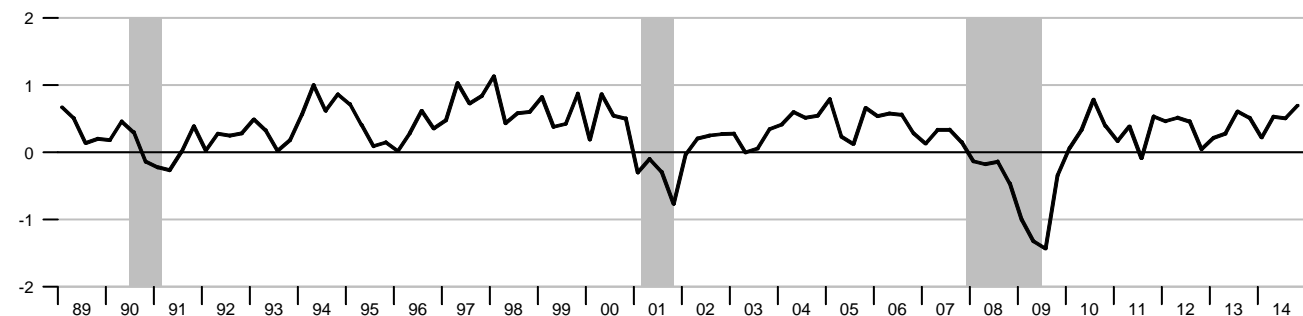
Aggregate Private Nonfarm Hours

Percent change from year ago



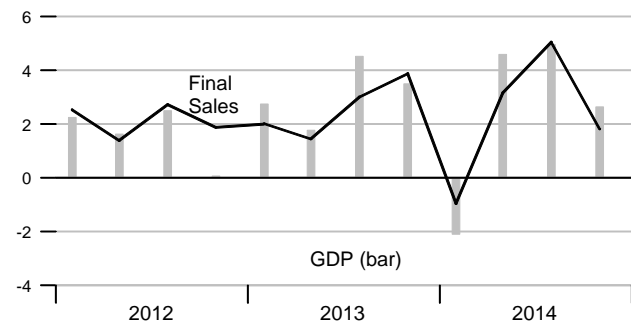
Real Change in Private Inventories

Percent of GDP



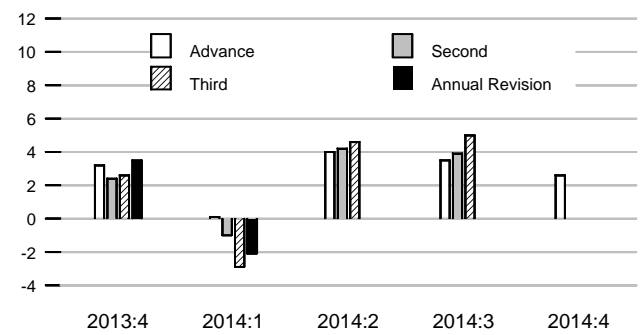
Real Final Sales and GDP

Compounded annual rates of change



Real GDP Revisions

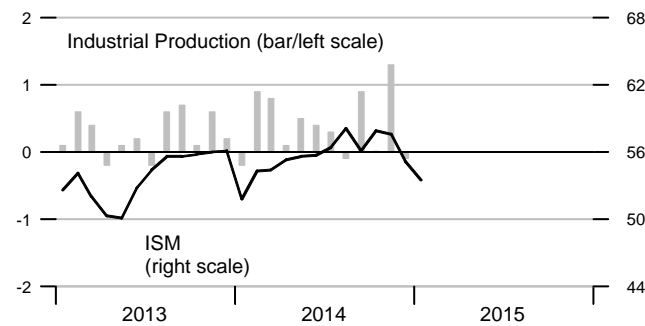
Compounded annual rates of change



Industrial Production and ISM Index

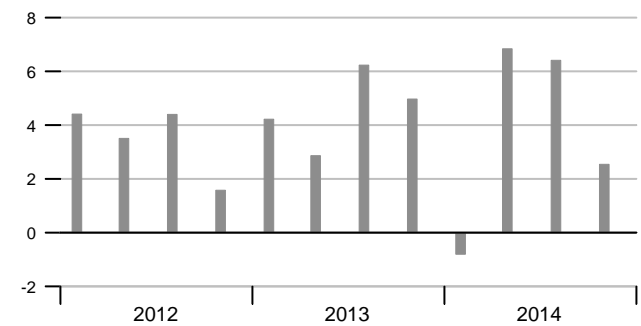
Percent change

Index



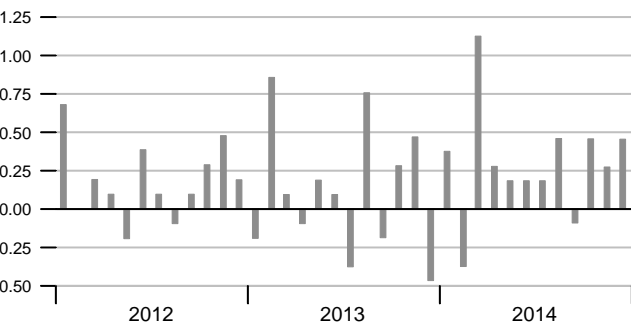
Nominal Gross Domestic Product

Compounded annual rates of change



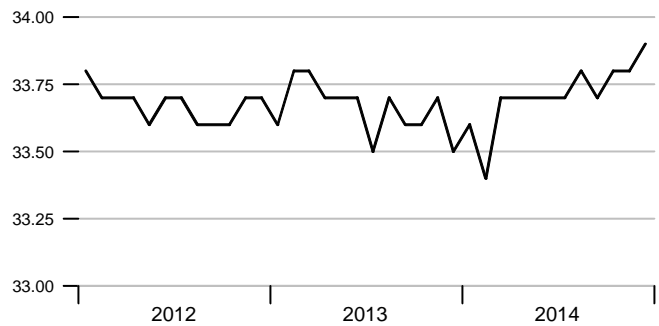
Aggregate Private Nonfarm Hours

Percent change



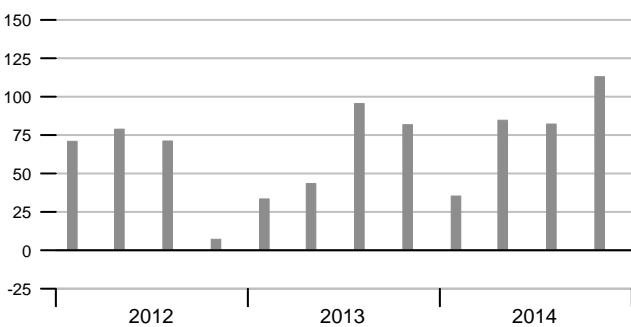
Average Weekly Private Nonfarm Hours

Hours



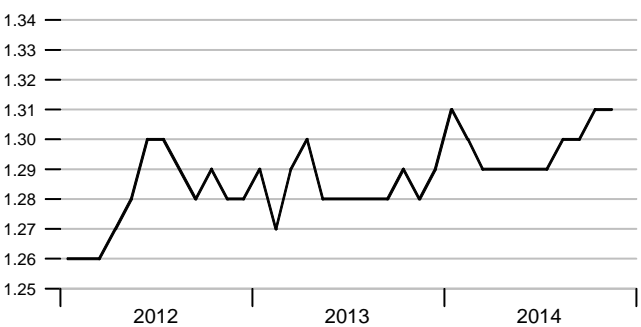
Real Change in Private Inventories

Billions of 2009 dollars



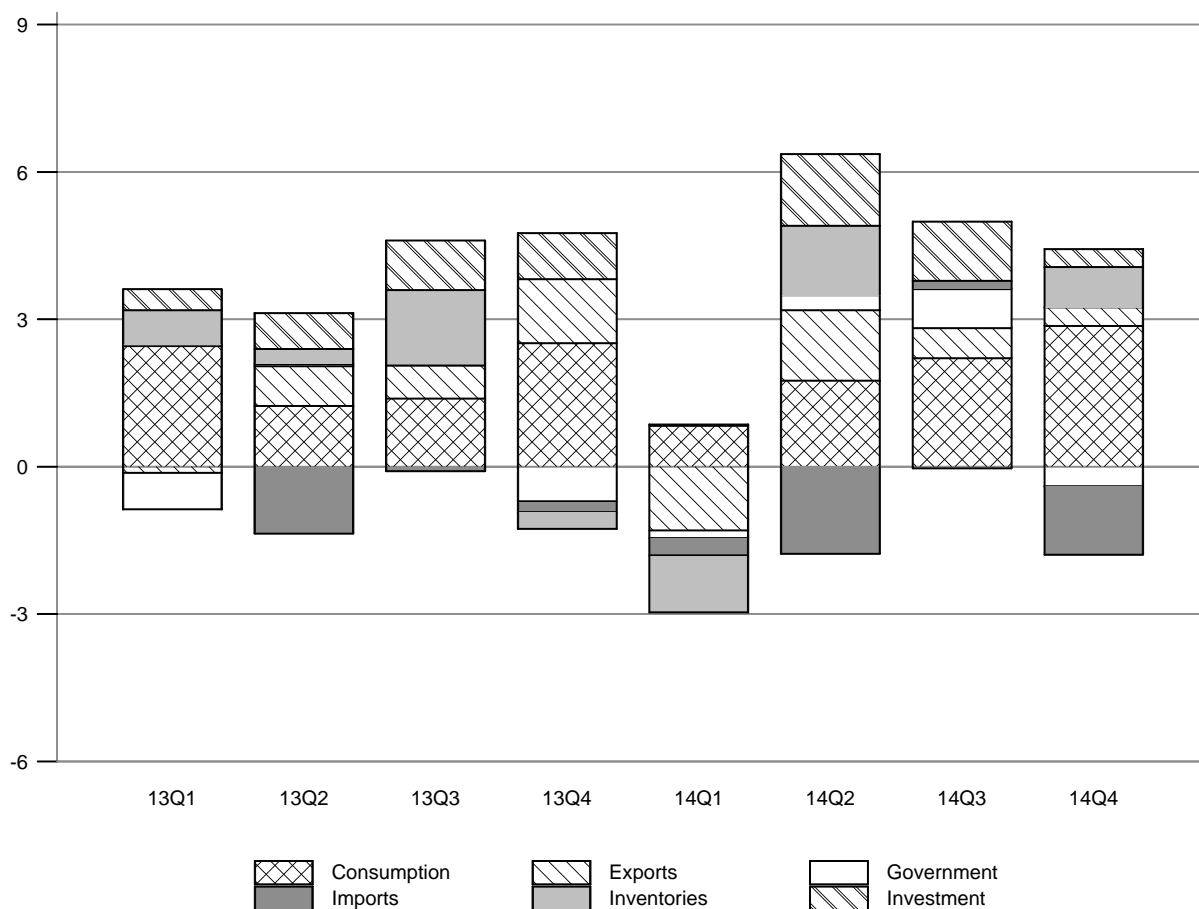
Inventory-Sales Ratio

Manufacturing and trade



Contribution of Components to Real GDP Growth

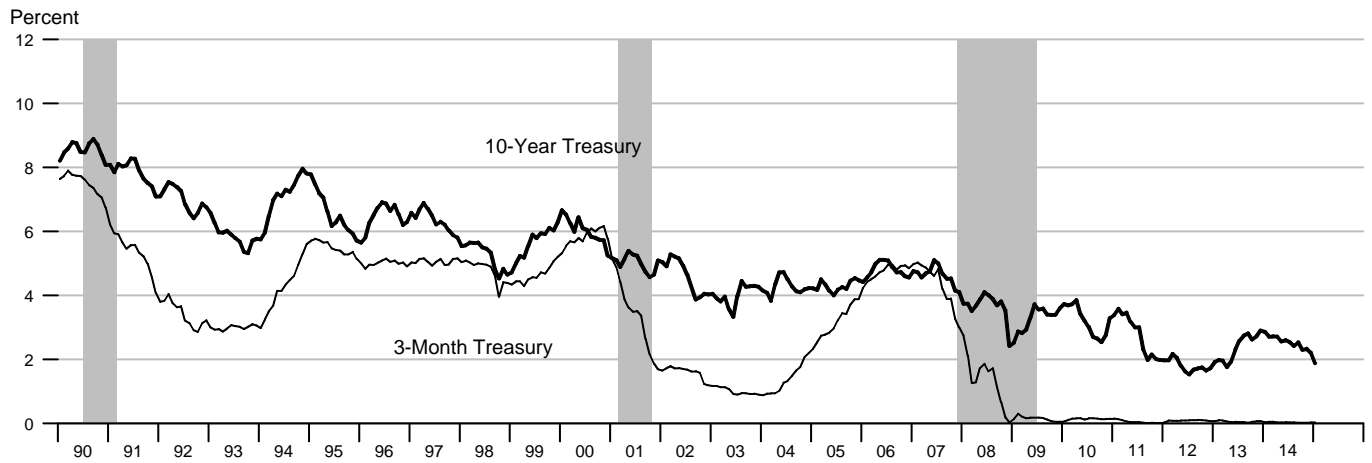
Percentage points at compounded annual rates



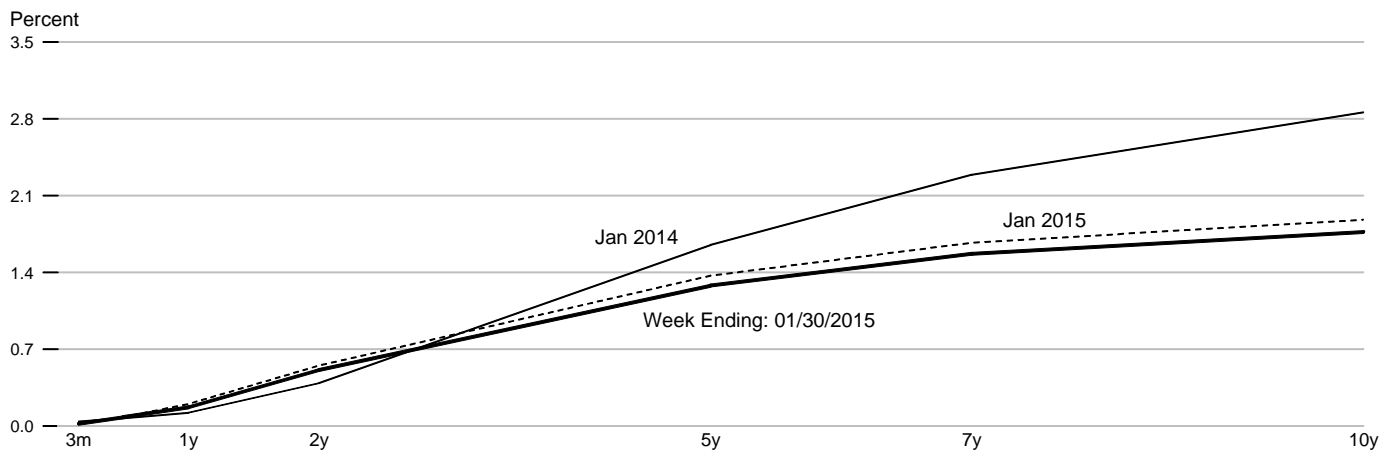
Contributions to Real GDP Growth Rate

	2013				2014			
	1st	2nd	3rd	4th	1st	2nd	3rd	4th
Final Sales	2.04	1.47	3.03	3.84	-0.95	3.17	5.00	1.82
Consumption	2.45	1.23	1.39	2.51	0.83	1.75	2.21	2.87
Fixed Investment	0.42	0.74	1.01	0.95	0.03	1.45	1.21	0.37
Nonresidential	0.20	0.21	0.67	1.23	0.20	1.18	1.10	0.24
Residential	0.22	0.53	0.34	-0.28	-0.17	0.27	0.10	0.13
Government	-0.75	0.04	0.04	-0.71	-0.15	0.31	0.80	-0.40
Federal	-0.79	-0.26	-0.08	-0.79	-0.01	-0.06	0.68	-0.54
State and Local	0.04	0.31	0.13	0.07	-0.14	0.38	0.13	0.14
Net Exports	-0.08	-0.54	0.59	1.08	-1.66	-0.34	0.78	-1.02
Exports	-0.12	0.82	0.67	1.30	-1.30	1.43	0.61	0.37
Imports	0.04	-1.36	-0.09	-0.22	-0.36	-1.77	0.16	-1.39
Change in Inventory	0.70	0.30	1.49	-0.34	-1.16	1.42	-0.03	0.82
Residual	0.04	0.01	0.15	0.02	-0.08	0.09	0.03	0.03
Real GDP Growth	2.74	1.77	4.52	3.50	-2.11	4.59	4.97	2.64

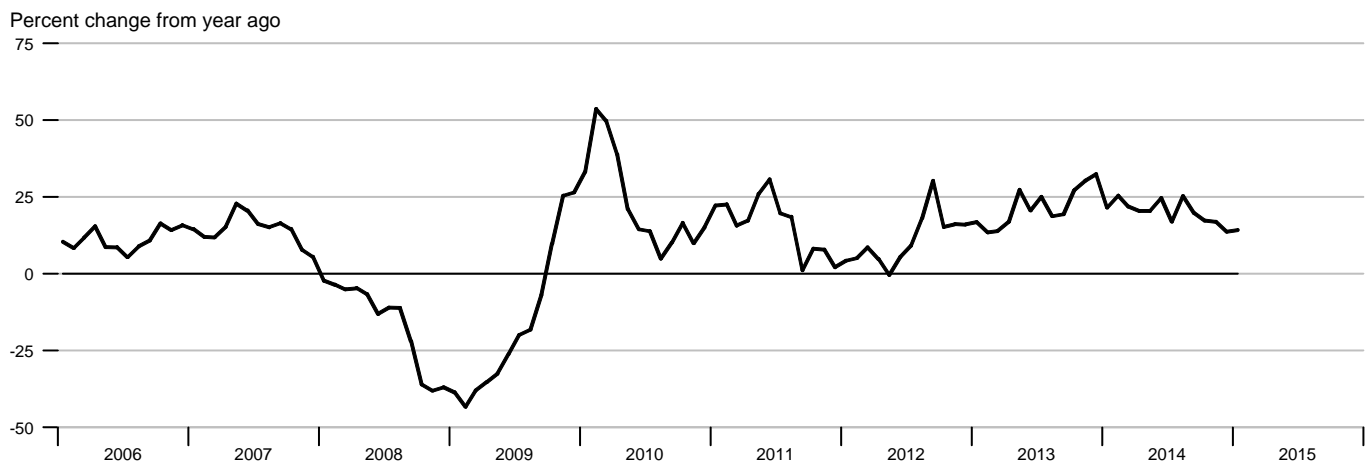
Interest Rates



Treasury Yield Curve



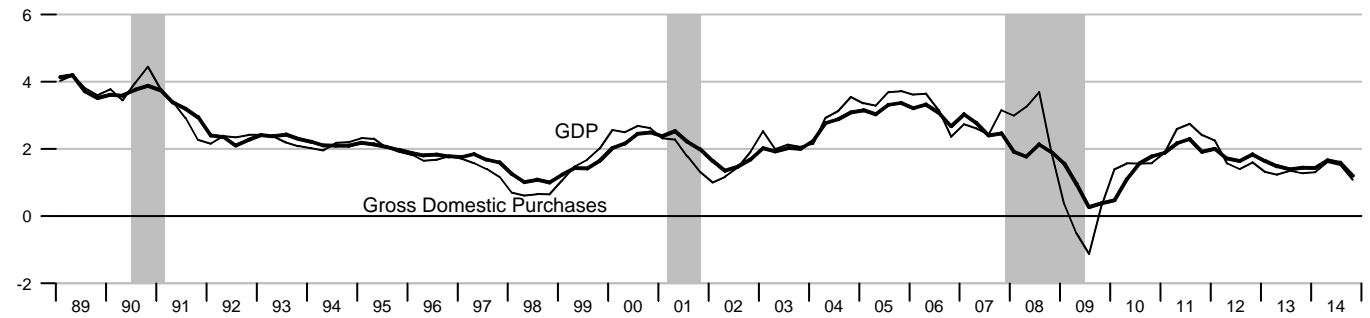
Standard and Poor's 500 Index with Reinvested Dividends



The S&P Dow Jones Indices LLC series are Copyright © 2014, S&P Dow Jones Indices LLC. All rights reserved.

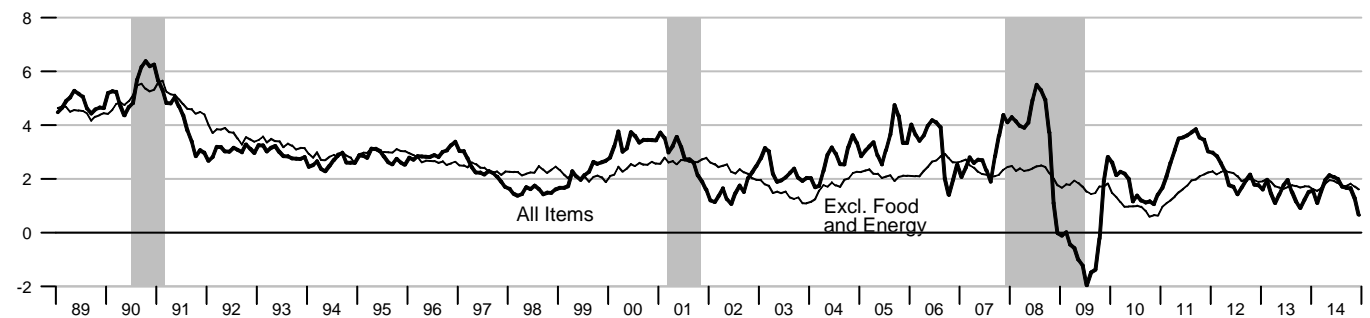
NIPA Chain Price Indexes

Percent change from year ago



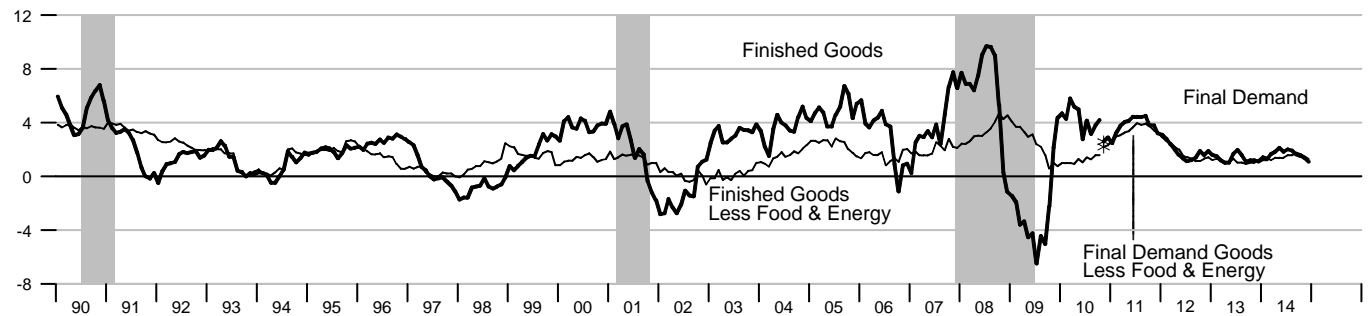
Consumer Price Index

Percent change from year ago



Producer Price Index, New and Old Methodology

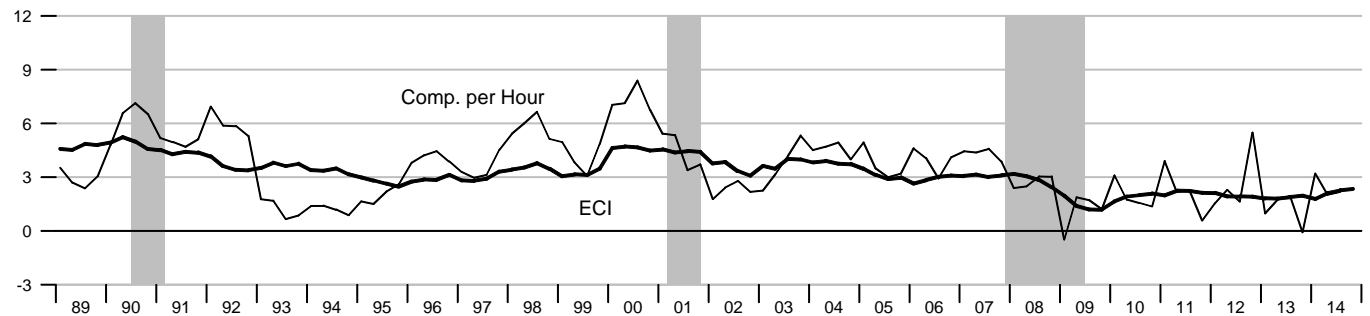
Percent change from year ago



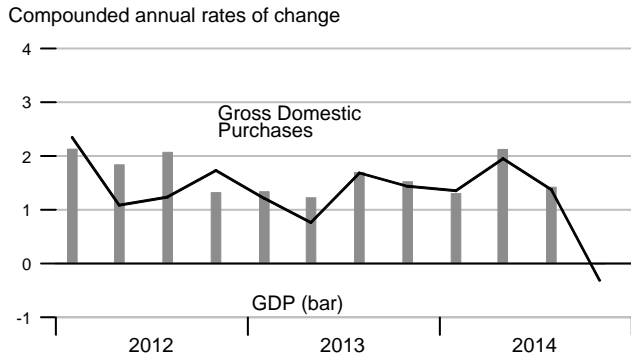
*Data prior to Nov. 2010 has transitioned from Stage of Processing to the Final Demand-Intermediate Demand aggregation system.

Employment Cost Index and Compensation per Hour

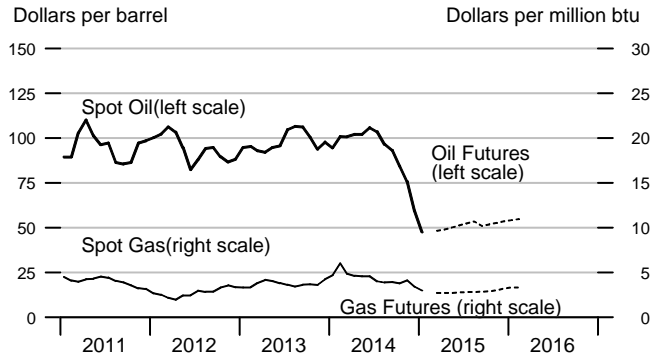
Percent change from year ago



NIPA Chain Price Indexes

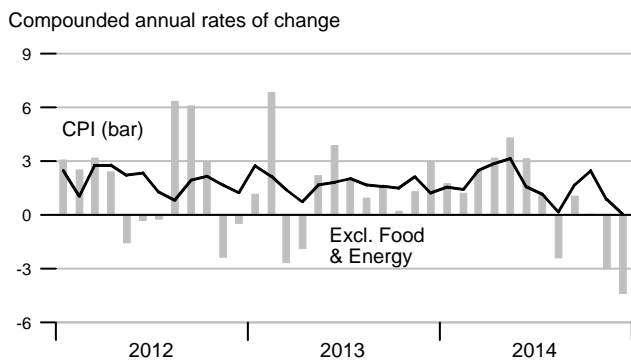


Oil & Natural Gas Prices: Spot & Futures

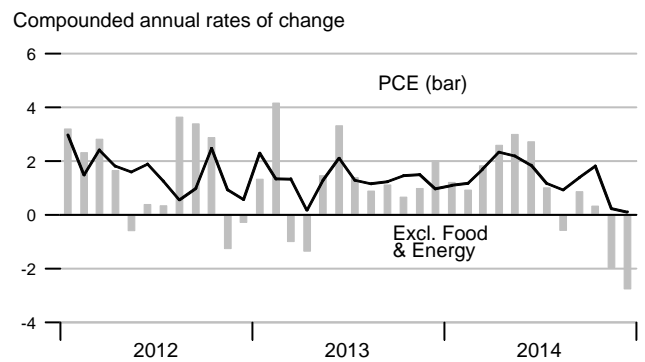


Note: Futures prices as of 1/30/2015.

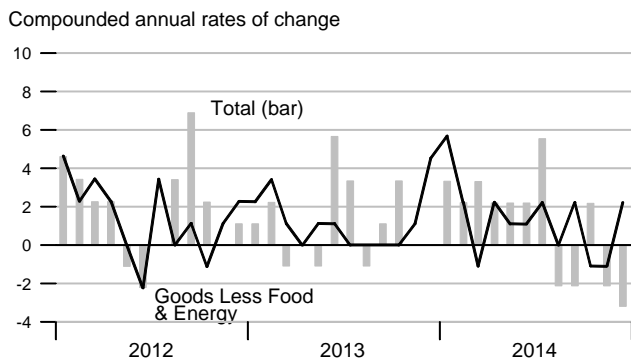
Consumer Price Index



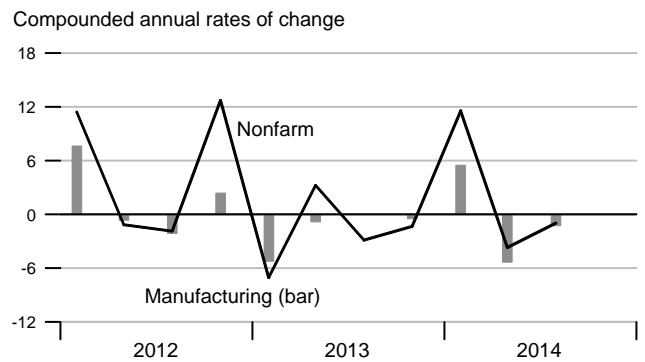
Consumption Chain Price Index



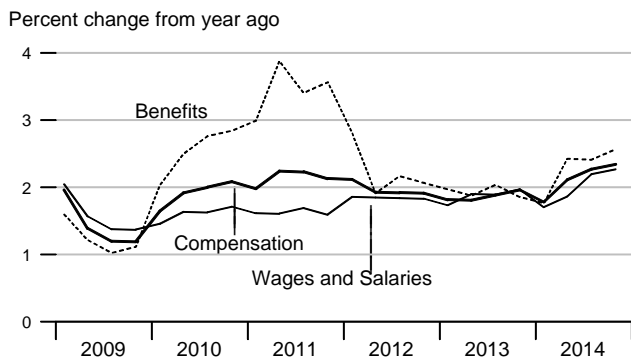
Producer Price Index, Final Demand



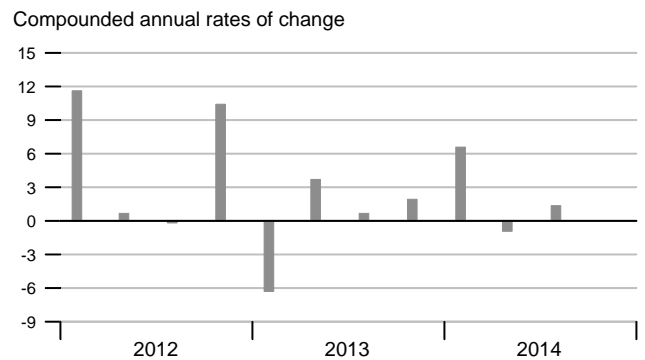
Unit Labor Cost



Employment Cost Index

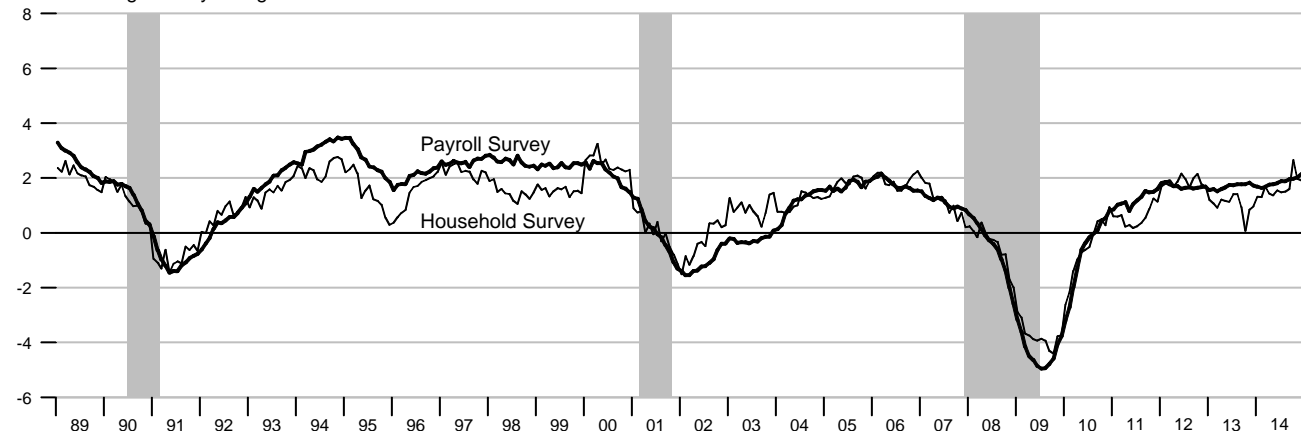


Compensation per Hour



Employment

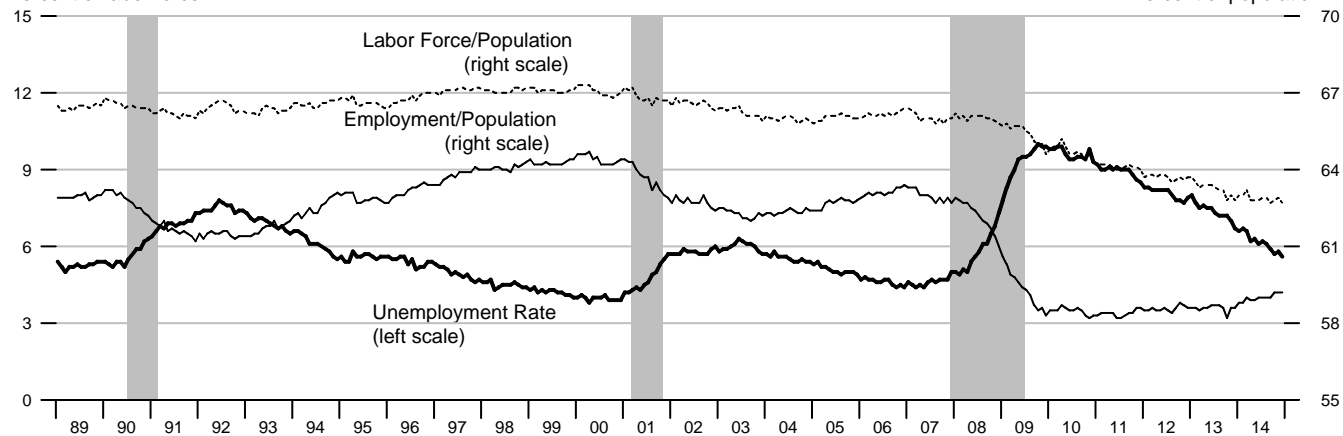
Percent change from year ago



Unemployment, Labor Force Participation, and Employment Rates

Percent of labor force

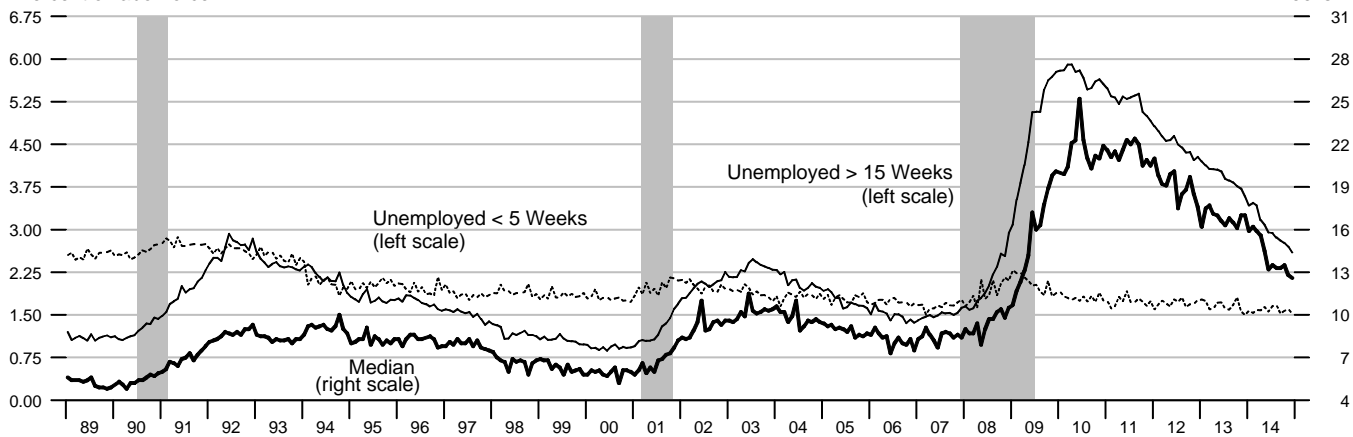
Percent of population



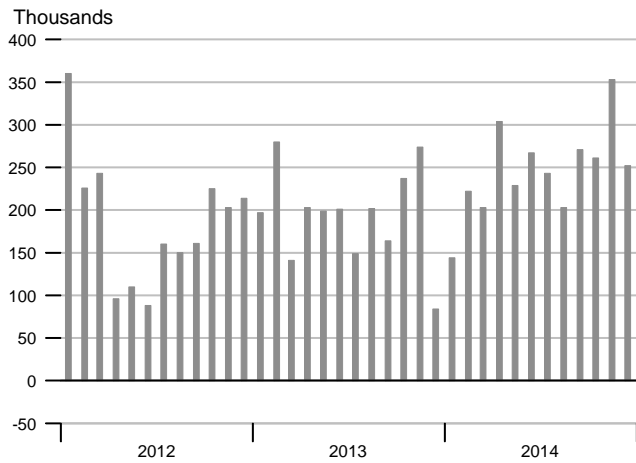
Duration of Unemployment

Percent of labor force

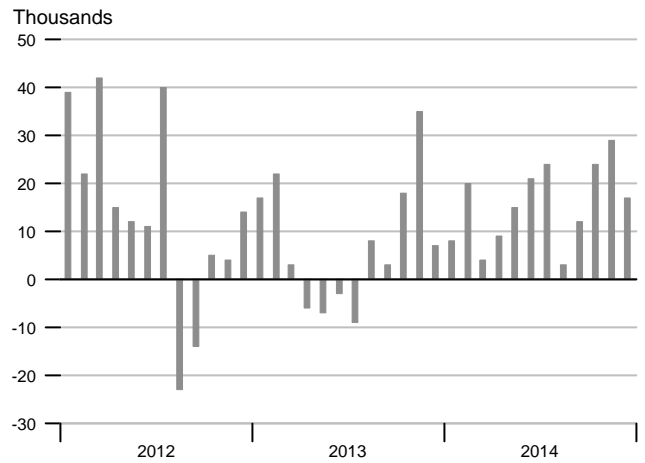
Weeks



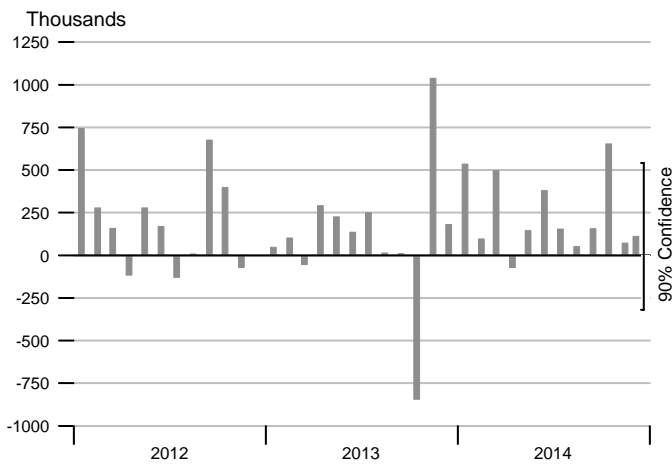
Change in Nonfarm Payrolls



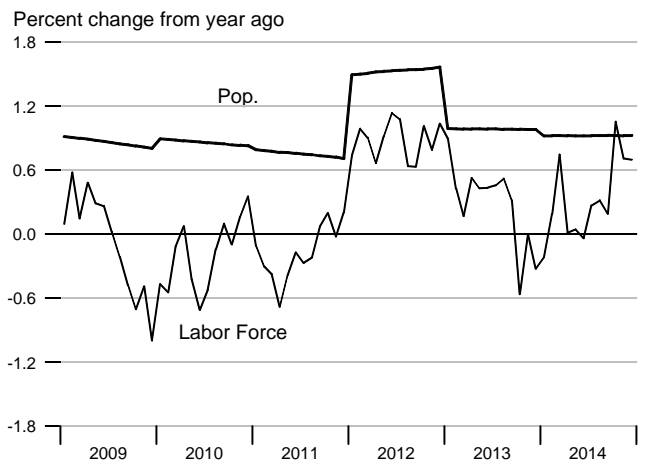
Change in Manufacturing Payrolls



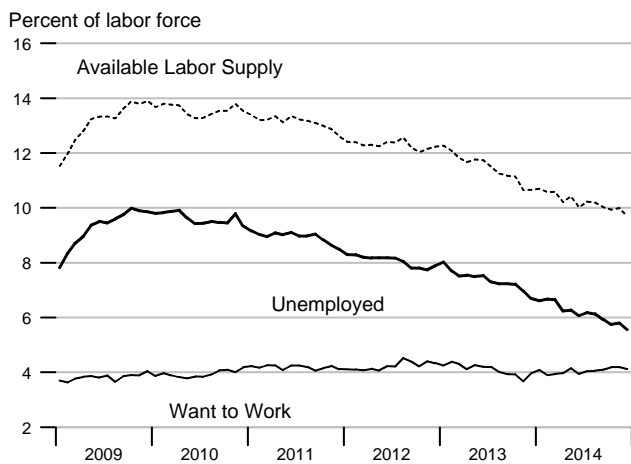
Change in Household Employment



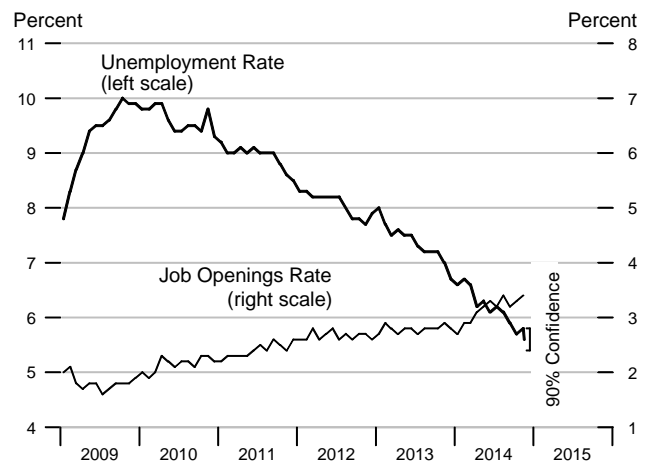
Labor Force and Population



Available Labor Supply and Components

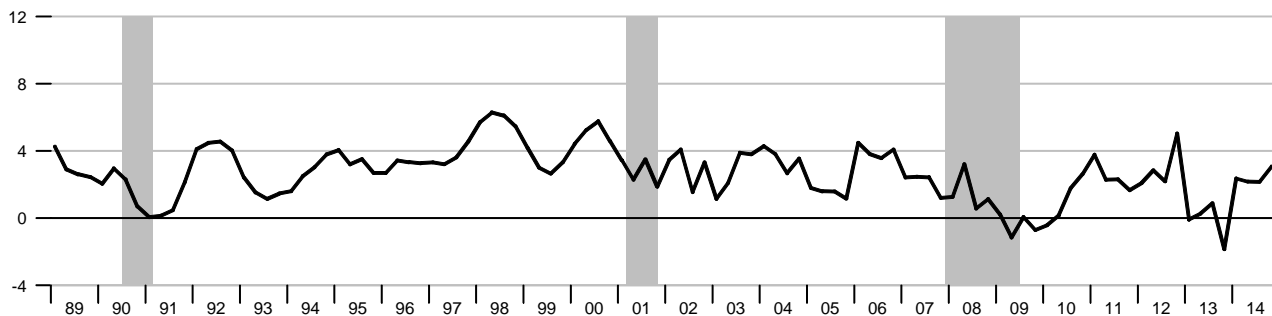


Unemployment Rate & Job Openings Rate



Real Disposable Personal Income

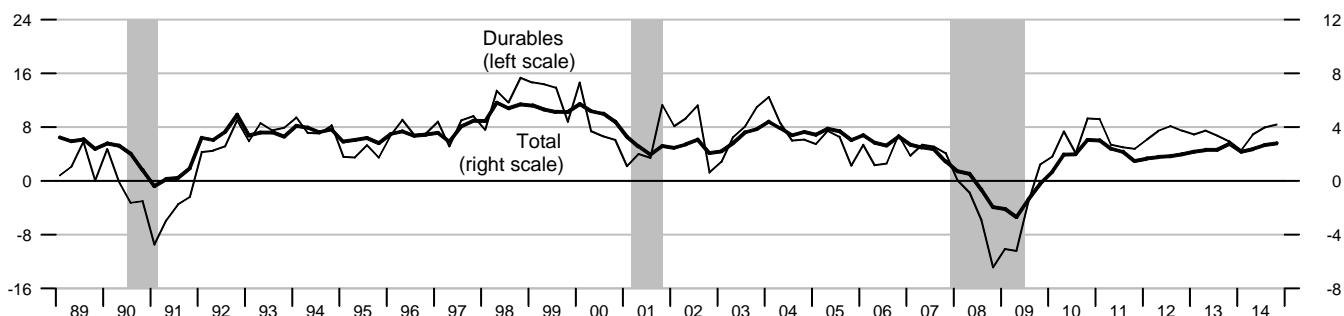
Percent change from year ago, quarterly data



Real Consumption

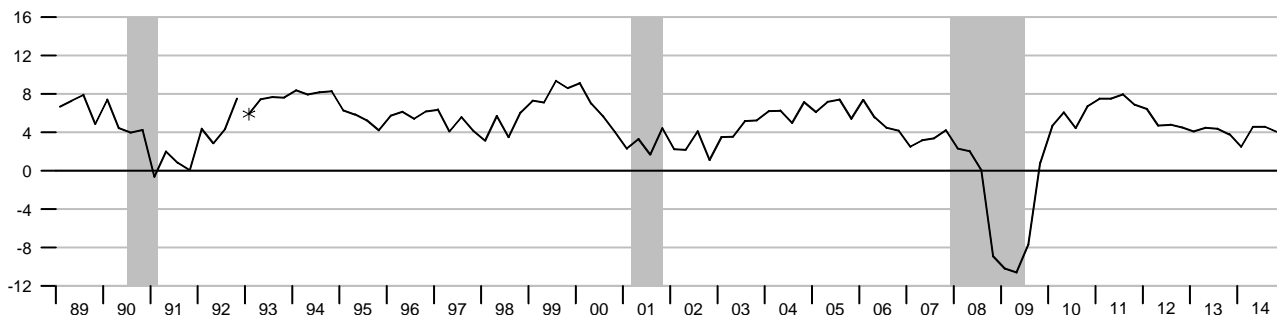
Percent change from year ago, quarterly data

Percent change from year ago, quarterly data



Retail and Food Services Sales

Percent change from year ago, quarterly average

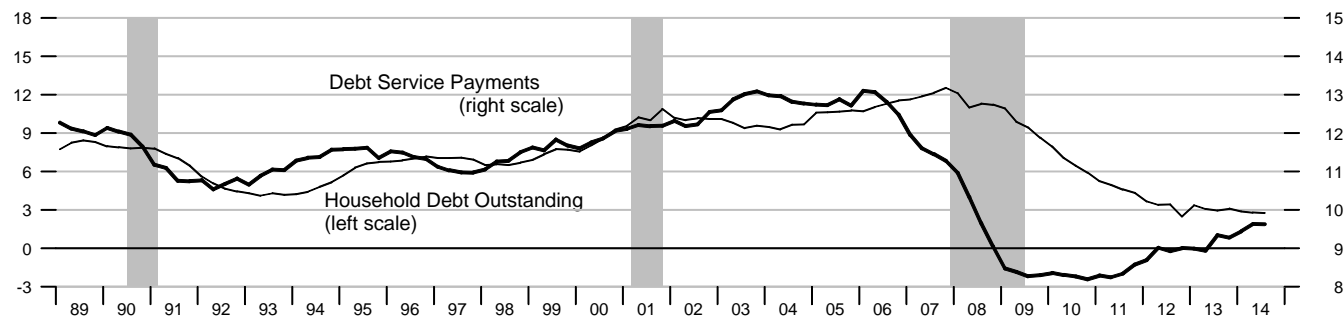


*Data from Jan. 1992 to the present are on a NAICS basis; data prior to Jan. 1992 are on an SIC basis and are not strictly comparable (see End Note).

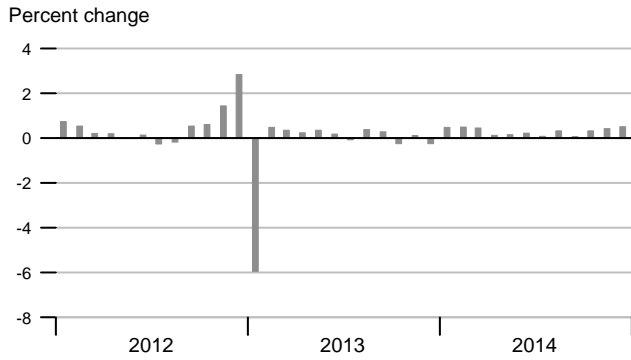
Debt Service Payments and Household Debt Outstanding

Percent change from year ago, quarterly data

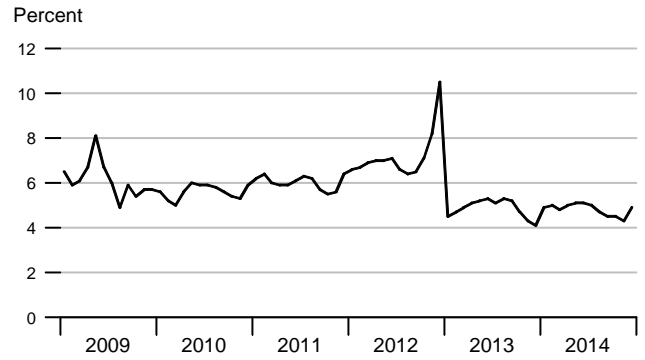
Percent of disposable personal income



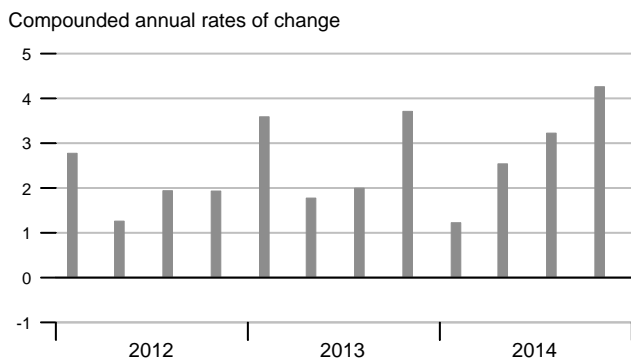
Real Disposable Personal Income



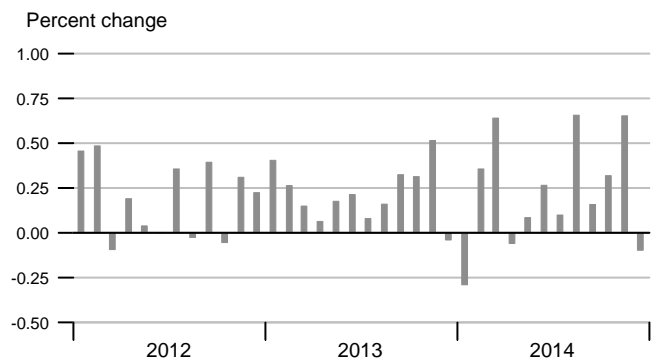
Personal Saving Rate



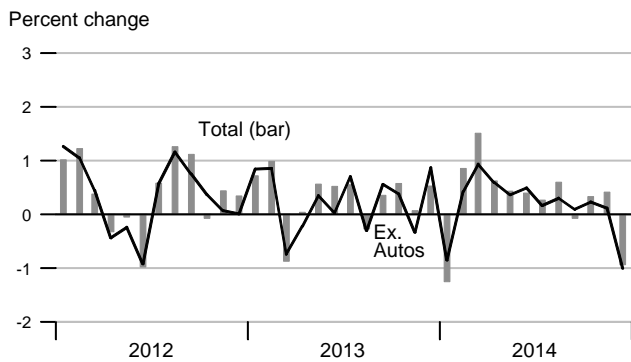
Real Consumption



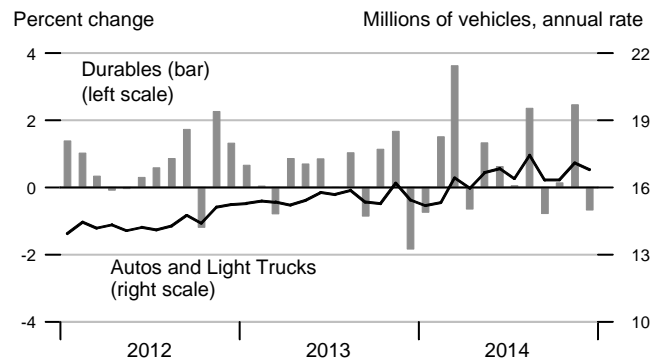
Real Consumption



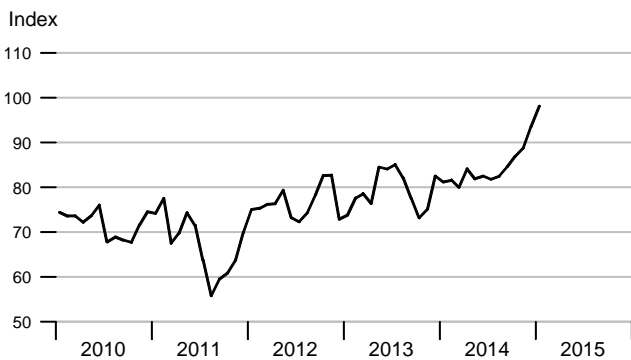
Retail & Food Services



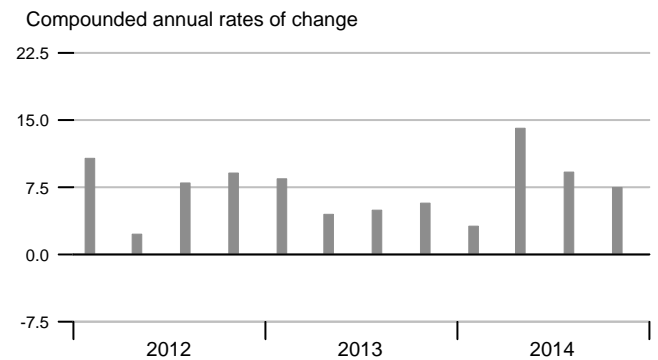
Real Durables Consumption & Vehicle Sales



Consumer Sentiment (U. of Michigan)

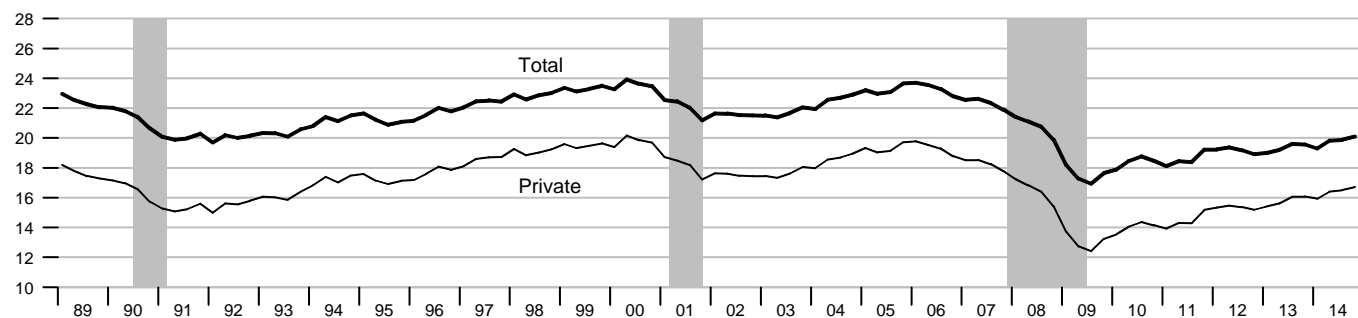


Real Durables Consumption



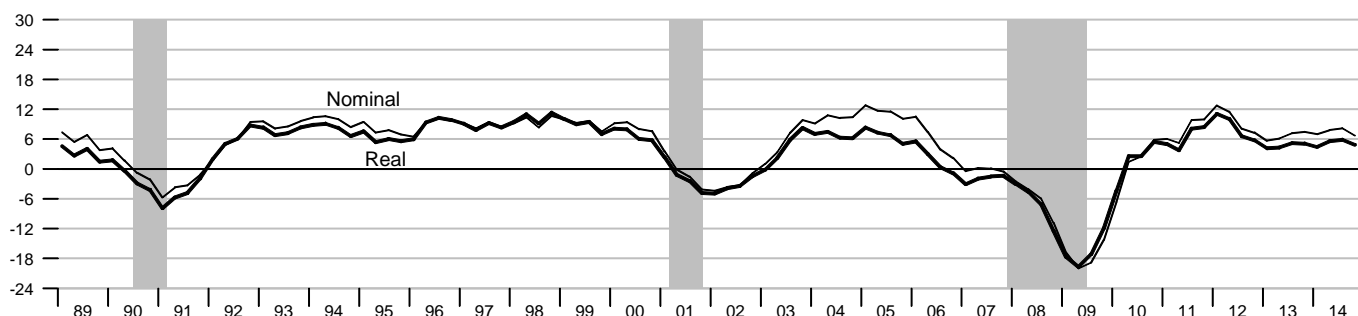
Investment

Percent of nominal GDP



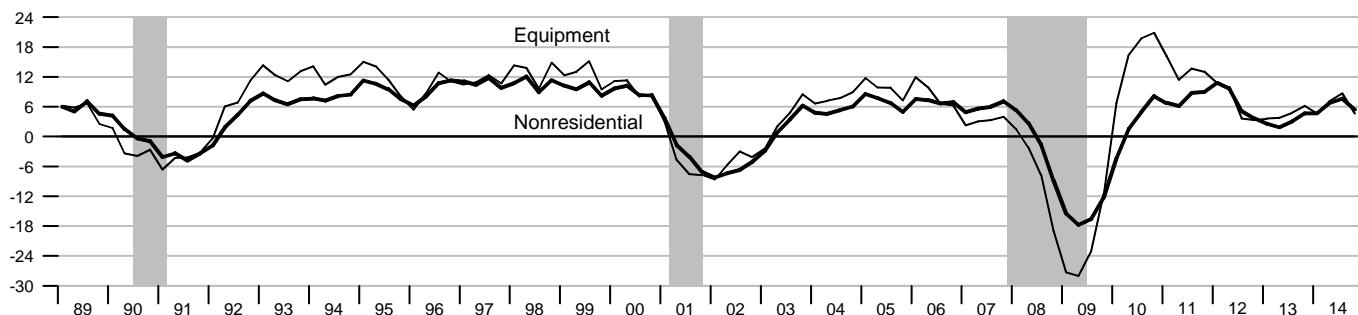
Private Fixed Investment

Percent change from year ago



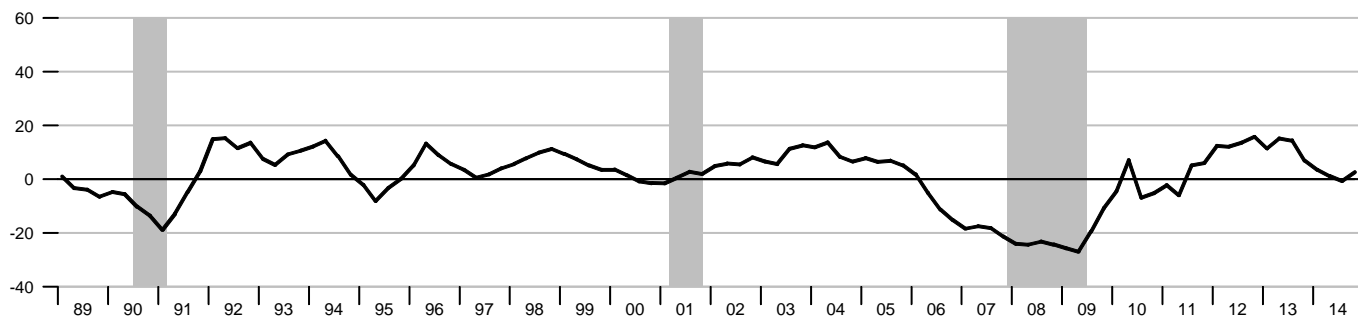
Real Nonresidential Fixed and Equipment Investment

Percent change from year ago

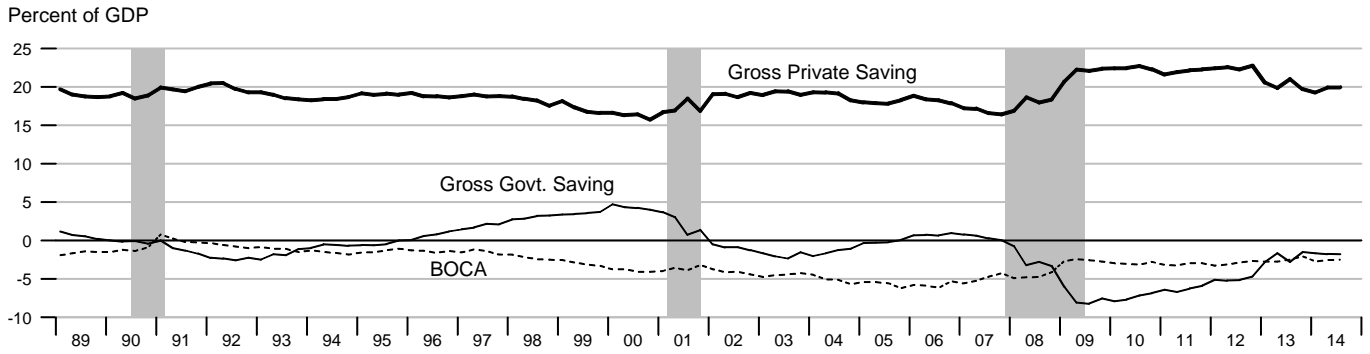


Real Residential Fixed Investment

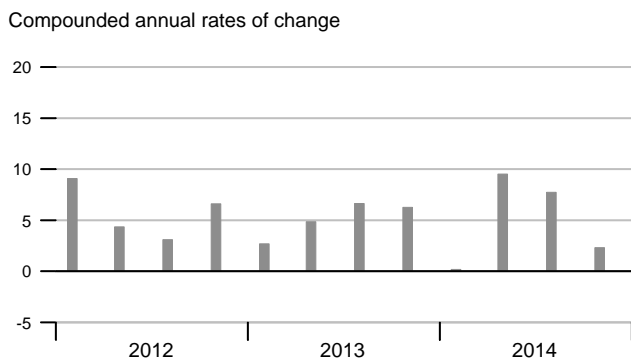
Percent change from year ago



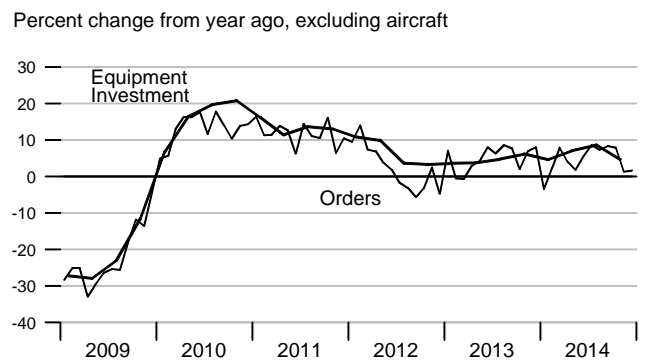
Gross Saving Rates and Balance on Current Account (NIPA)



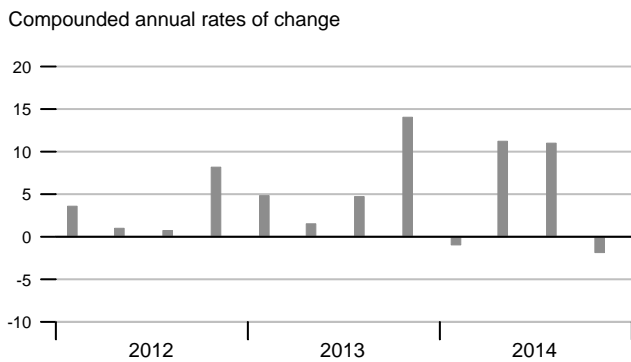
Real Private Fixed Investment



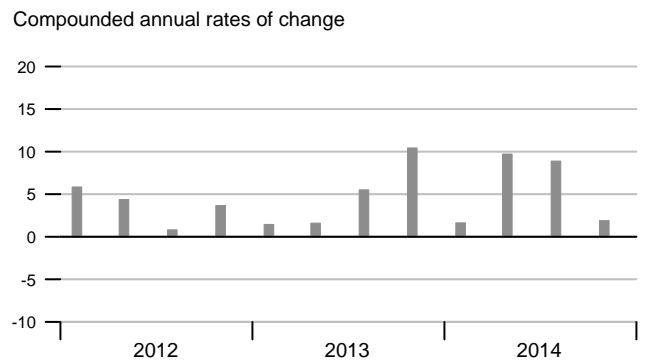
Nondefense Capital Goods Orders



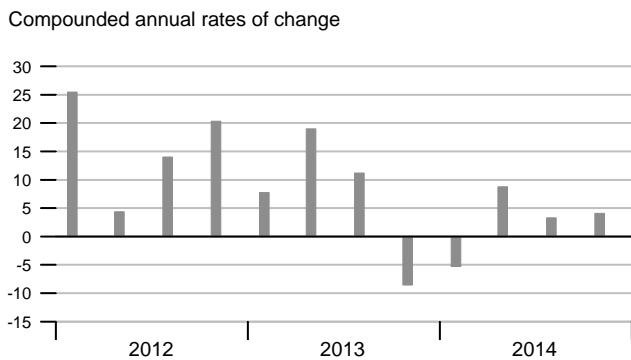
Real Equipment Investment



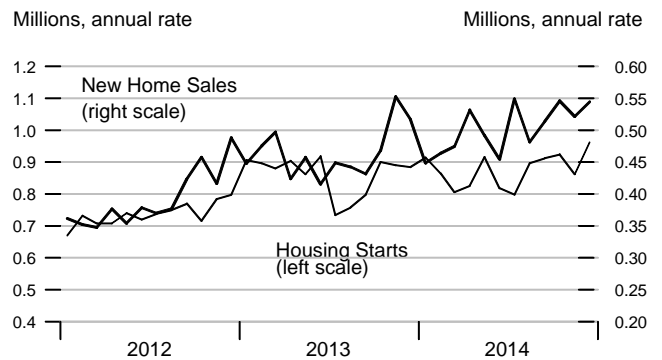
Real Nonresidential Fixed Investment



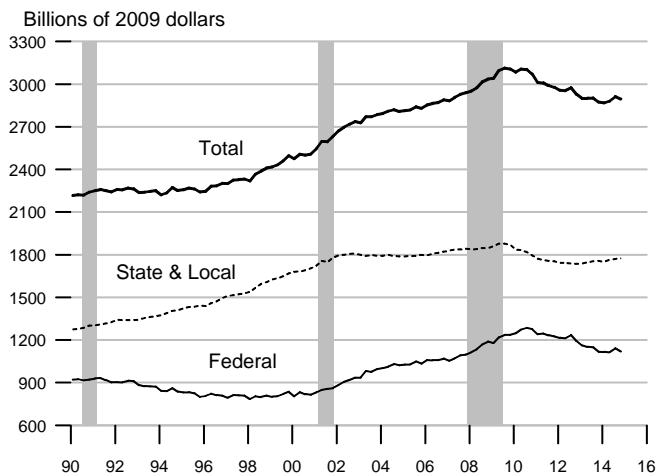
Real Residential Fixed Investment



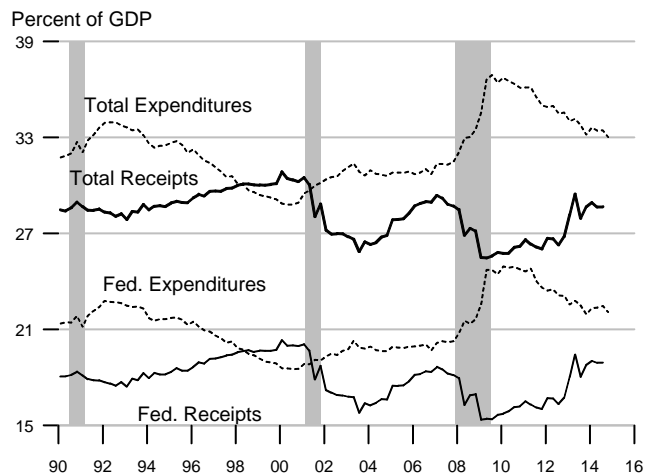
Housing Starts and New Home Sales



Govt. Consumption and Investment



Govt. Current Receipts and Expenditures



Government Budgets

Billions of dollars

National Income Accounts

Calendar Years

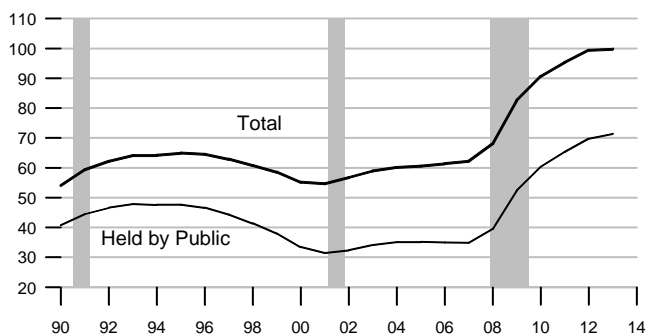
Unified Budget

Fiscal Years

	State and Local			Federal			Federal		
	Receipts	Expenditures	Surplus or Deficit (-)	Receipts	Expenditures	Surplus or Deficit (-)	Receipts	Outlays	Surplus or Deficit (-)
1997	1085.8	1084.1	1.7	1661.6	1752.8	-91.2	1579.2	1601.1	-21.9
1998	1148.7	1133.3	15.4	1783.8	1781.0	2.8	1721.7	1652.5	69.3
1999	1221.8	1212.6	9.2	1900.7	1834.1	66.6	1827.5	1701.8	125.6
2000	1303.1	1293.2	9.9	2063.2	1906.6	156.6	2025.2	1789.0	236.2
2001	1352.6	1417.9	-65.3	2026.8	2012.4	14.4	1991.1	1862.8	128.2
2002	1388.4	1509.4	-121.0	1865.8	2136.3	-270.5	1853.1	2010.9	-157.8
2003	1474.6	1596.0	-121.4	1889.9	2292.8	-402.9	1782.3	2159.9	-377.6
2004	1575.1	1683.4	-108.3	2022.2	2421.4	-399.2	1880.1	2292.8	-412.7
2005	1708.8	1775.4	-66.6	2298.1	2602.8	-304.7	2153.6	2472.0	-318.3
2006	1810.9	1850.3	-39.4	2531.7	2758.8	-227.1	2406.9	2655.1	-248.2
2007	1900.6	1973.3	-72.7	2660.8	2926.4	-265.6	2568.0	2728.7	-160.7
2008	1909.1	2074.1	-165.0	2503.7	3137.7	-634.0	2524.0	2982.5	-458.6
2009	1919.2	2191.2	-272.0	2227.8	3476.6	-1249	2105.0	3517.7	-1413
2010	1998.5	2235.8	-237.3	2391.7	3720.5	-1329	2162.7	3457.1	-1294
2011	2030.5	2246.4	-215.9	2519.5	3763.7	-1244	2303.5	3603.1	-1300
2012	2061.2	2293.8	-232.6	2684.1	3763.2	-1079	2450.2	3537.1	-1087
2013	2125.6	2350.8	-225.2	3113.0	3762.1	-649.1	2775.1	3454.6	-679.5
2014	.	2431.5	.	.	3884.5	.	3020.8	3504.2	-483.4
2013Q1	2111.1	2329.1	-218.0	2974.9	3721.0	-746.1	581.1	888.2	-307.2
2013Q2	2121.2	2342.3	-221.1	3226.0	3787.2	-561.2	890.5	799.9	90.7
2013Q3	2134.2	2364.1	-229.9	3043.9	3793.7	-749.8	686.9	857.3	-170.4
2013Q4	2135.9	2367.5	-231.6	3207.1	3746.4	-539.3	666.4	839.0	-172.6
2014Q1	2157.0	2397.9	-240.9	3242.6	3802.7	-560.1	656.2	896.9	-240.7
2014Q2	2193.8	2420.9	-227.1	3276.9	3875.5	-598.6	937.8	890.4	47.4
2014Q3	2233.9	2450.7	-216.8	3331.1	3953.2	-622.1	760.4	877.9	-117.5
2014Q4	.	2456.5	.	.	3906.5	.	739.5	916.1	-176.7

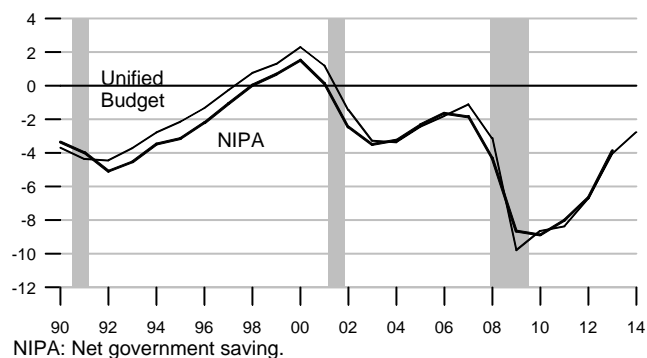
Federal Debt

Percent of GDP



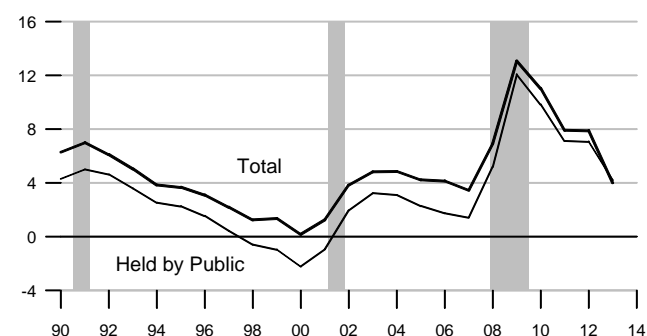
Federal Surplus (+) / Deficit (-)

Percent of GDP



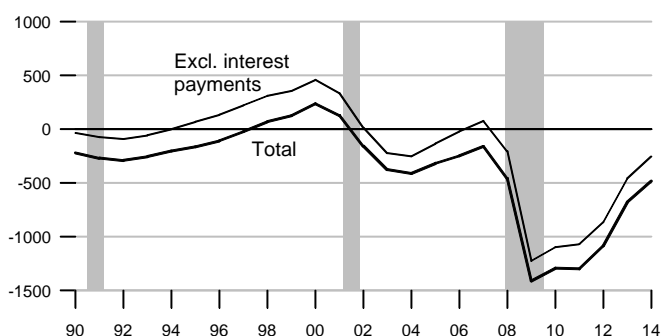
Change in Federal Debt

Percent of GDP



Federal Surplus (+) / Deficit (-), Unified Basis

Billions of dollars, fiscal years

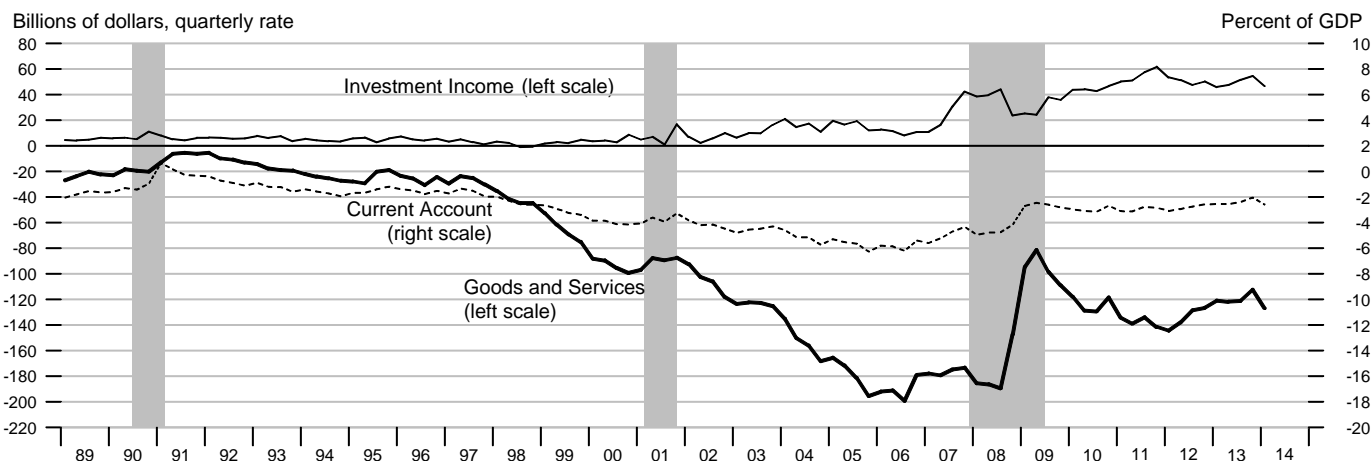


Federal Government Debt

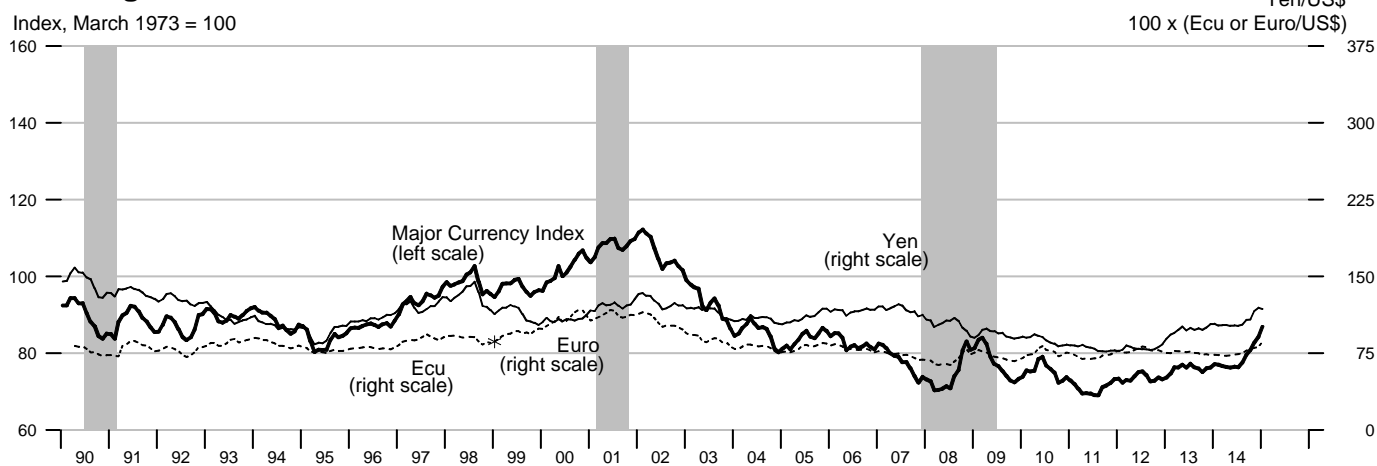
Billions of dollars, end of month or fiscal year
Excludes Agency-issued debt

		Total Public Debt	Held by Agencies and Trusts	Held by Public		Held by Private Investors	
				Total	Federal Reserve Banks	Total	Foreign and International
2011		14790.3	4658.3	10132.0	1664.7	8462.4	4912.1
2012		16066.2	4791.9	11274.4	1645.3	9619.4	5476.0
2013		16738.2	4757.2	11981.0	2072.3	9904.0	5653.0
2011	March	14270.1	4613.6	9656.6	1340.5	8311.1	4481.4
	June	14343.1	4596.2	9746.9	1619.5	8122.7	4690.6
	September	14790.3	4658.3	10132.0	1664.7	8462.4	4912.1
	December	15222.9	4770.4	10452.5	1663.5	8783.3	5006.9
2012	March	15582.1	4730.1	10852.0	1661.1	9185.1	5145.0
	June	15856.4	4806.8	11049.5	1659.9	9379.7	5311.0
	September	16066.2	4791.9	11274.4	1645.3	9619.4	5476.0
	December	16432.7	4846.2	11586.6	1666.1	9909.1	5574.0
2013	March	16771.4	4848.9	11922.5	1796.1	10114.8	5725.0
	June	16738.3	4831.8	11906.6	1936.6	9964.9	5595.0
	September	16738.2	4757.2	11981.0	2072.3	9904.0	5653.0
	December	17156.1	4996.8	12159.3	2208.8	10147.0	5793.0
2014	March	17601.2	4982.0	12619.2	2614.6	10300.0	5950.0
	June	17632.6	5060.6	12572.0	2705.9	10172.0	NA

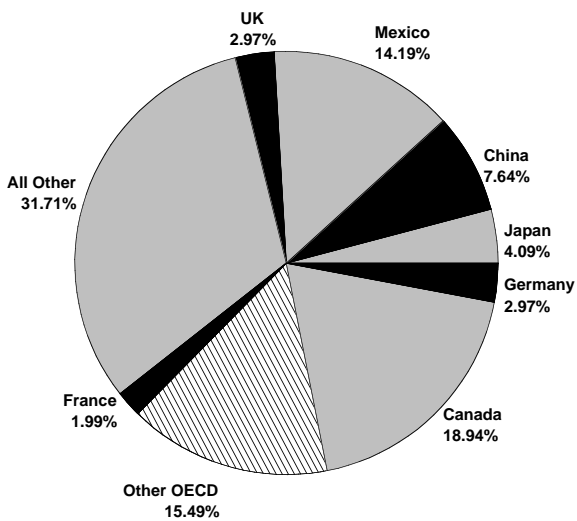
Current Account, Trade and Investment Income Balances



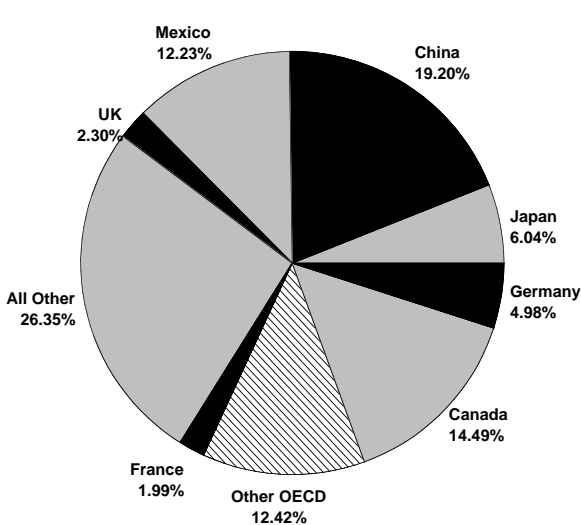
Exchange Rates



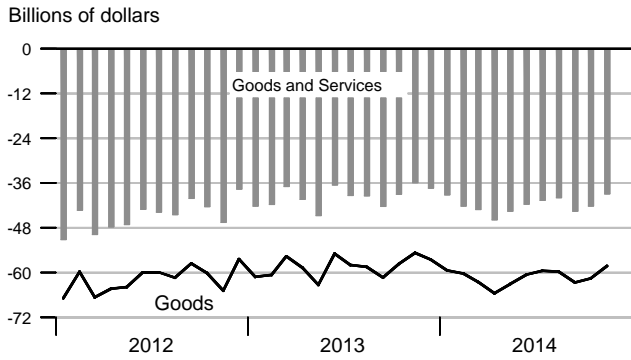
Goods Export Shares, 2013



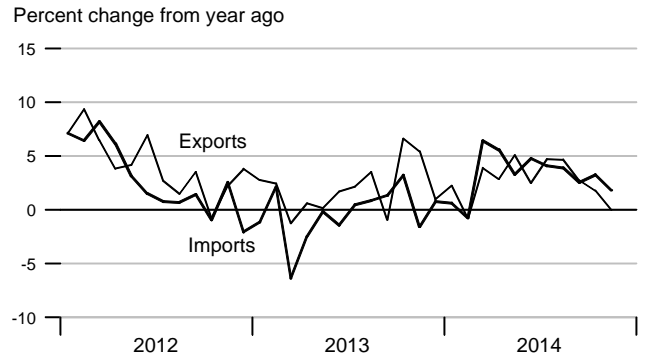
Goods Import Shares, 2013



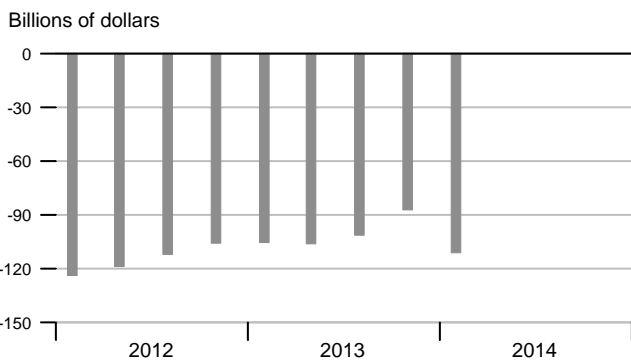
Trade Balance



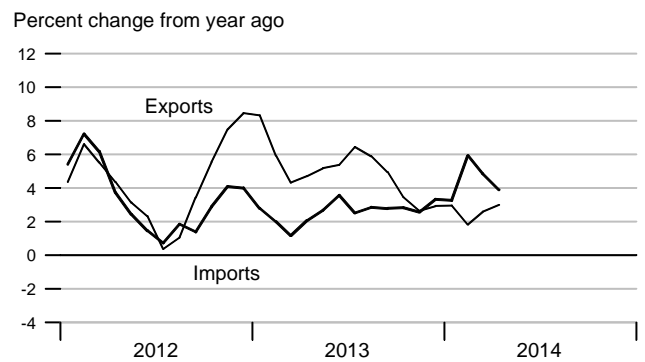
Goods Trade



Current Account Balance



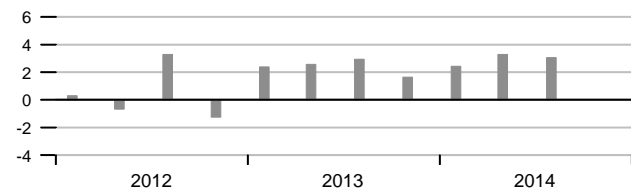
Services Trade



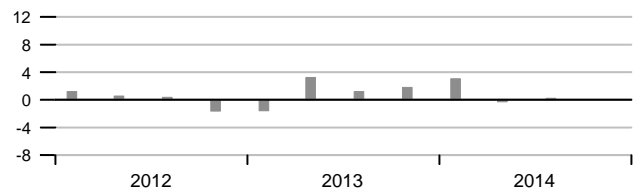
Real GDP Growth of Major Trading Partners

Compounded annual rates of change

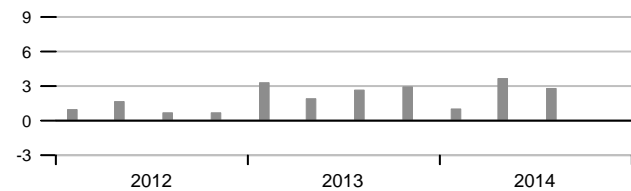
United Kingdom



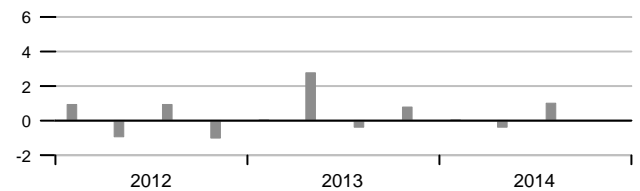
Germany



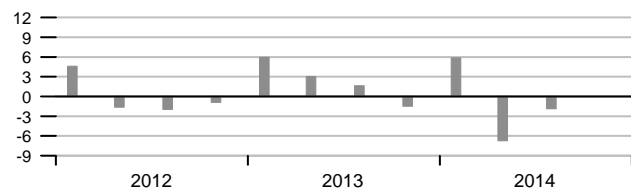
Canada



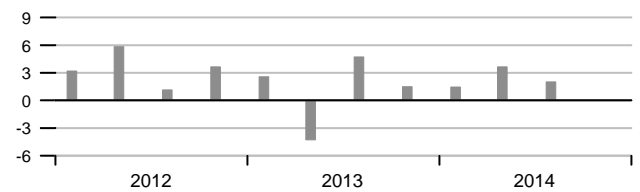
France



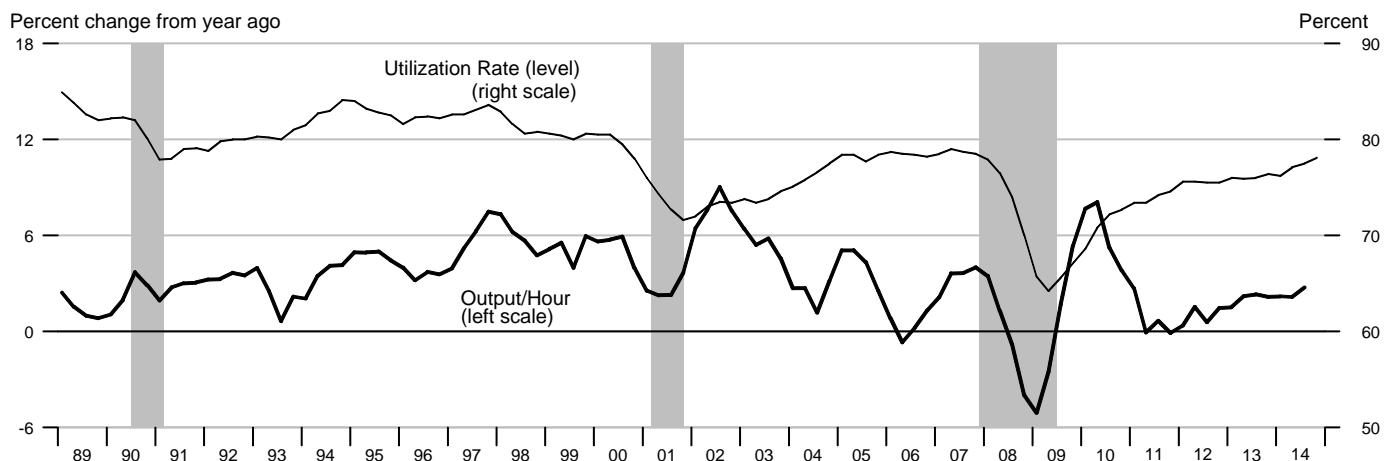
Japan



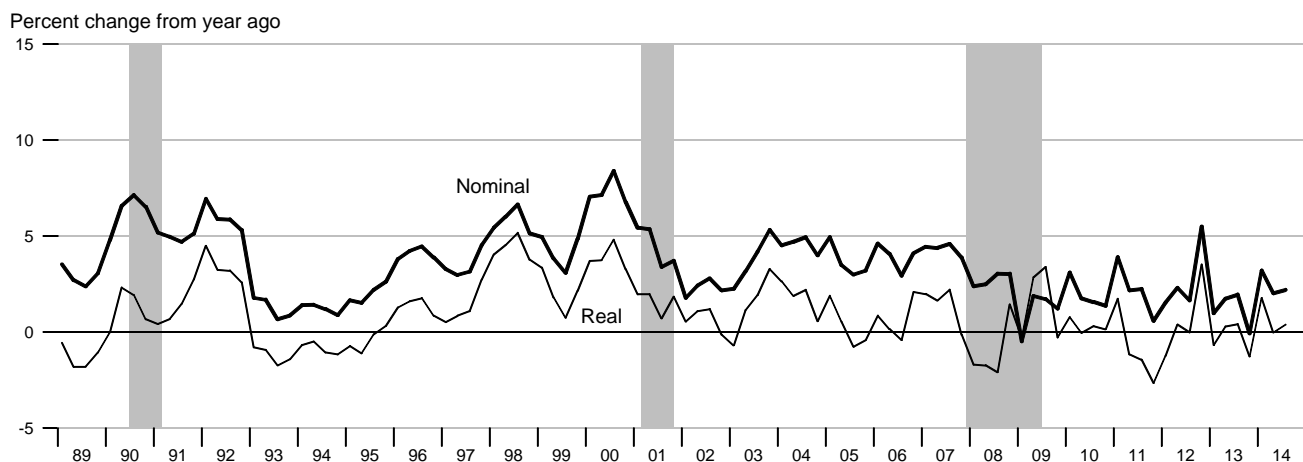
Mexico



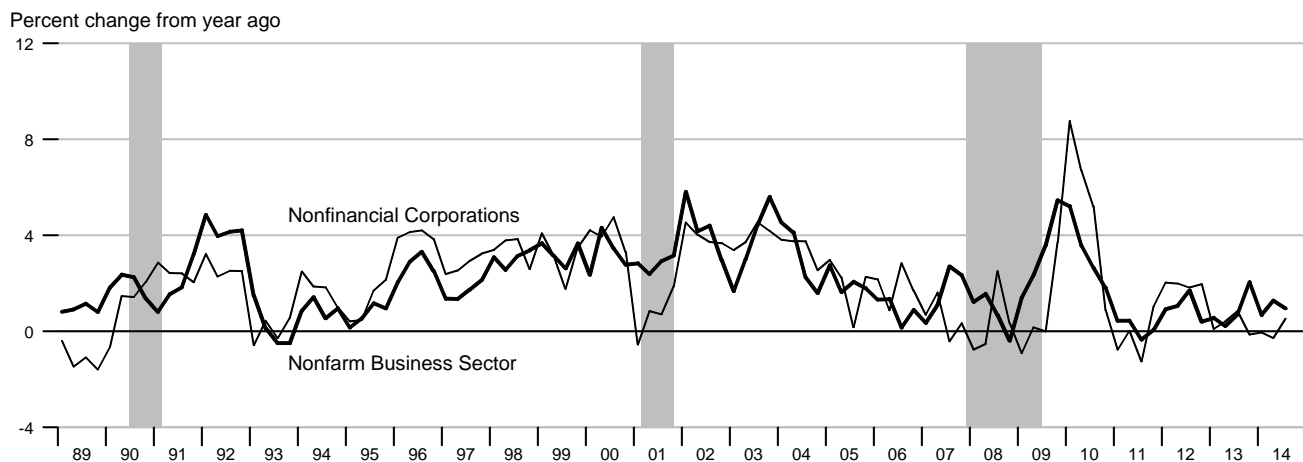
Output per Hour and Capacity Utilization, Manufacturing



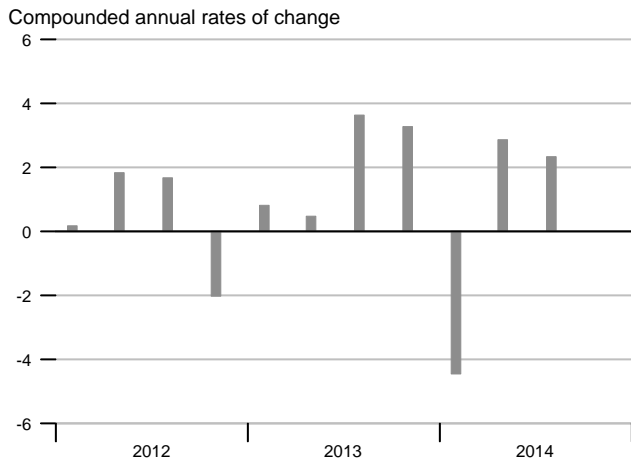
Nonfarm Compensation per Hour



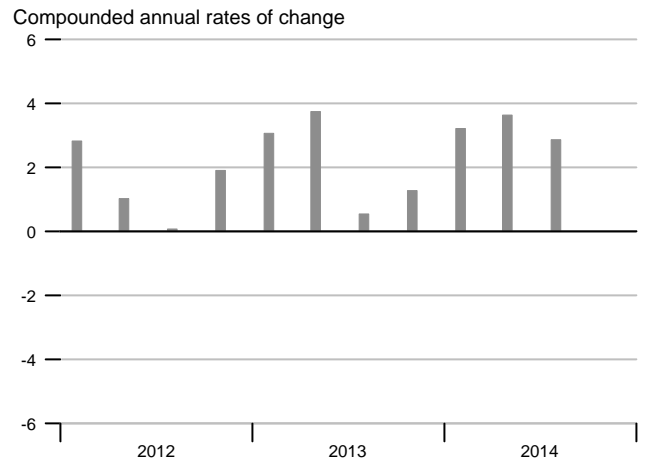
Output per Hour, Nonfarm Business and Nonfinancial Corporations



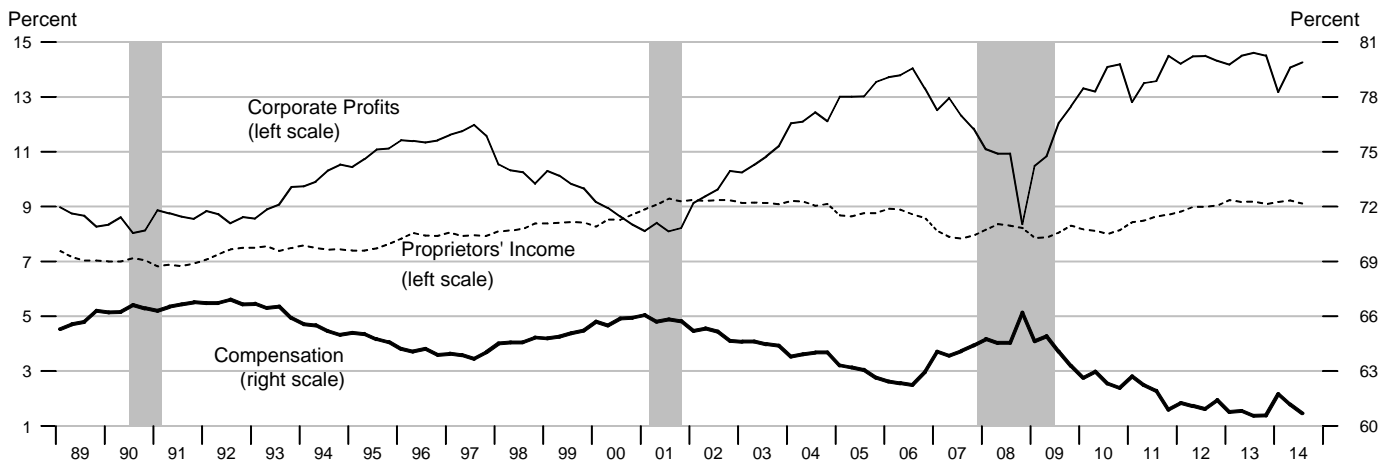
Nonfarm Output per Hour



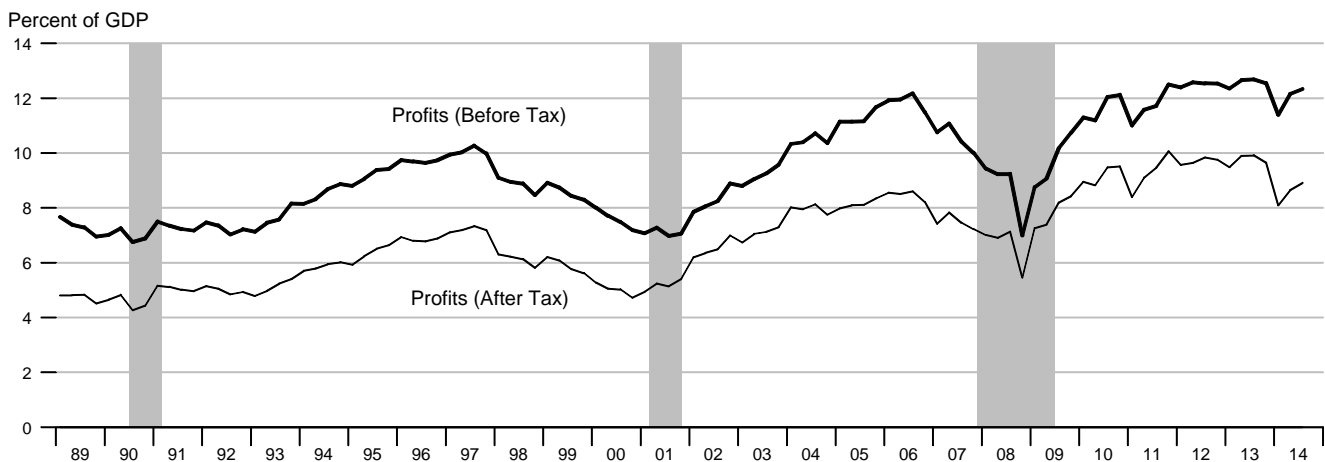
Manufacturing Output per Hour



Selected Component Shares of National Income

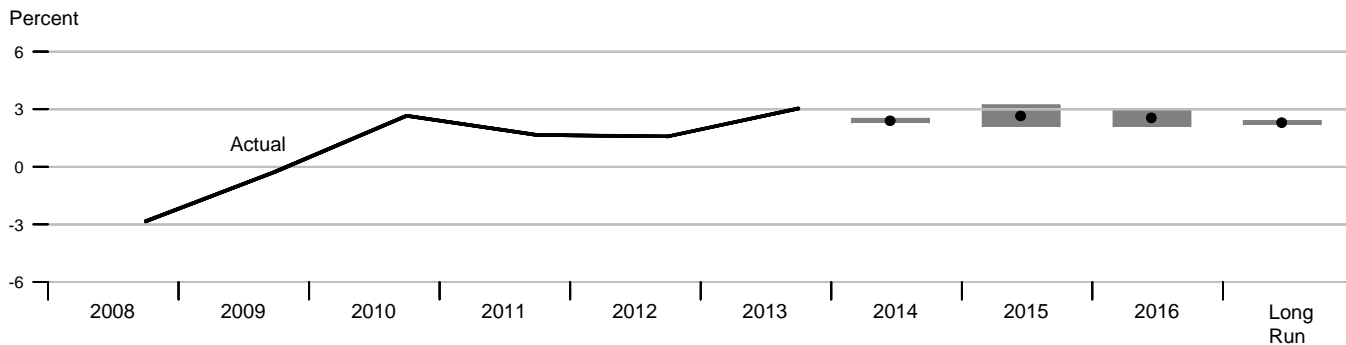


Corporate Profits (with IVA and CCAdj)

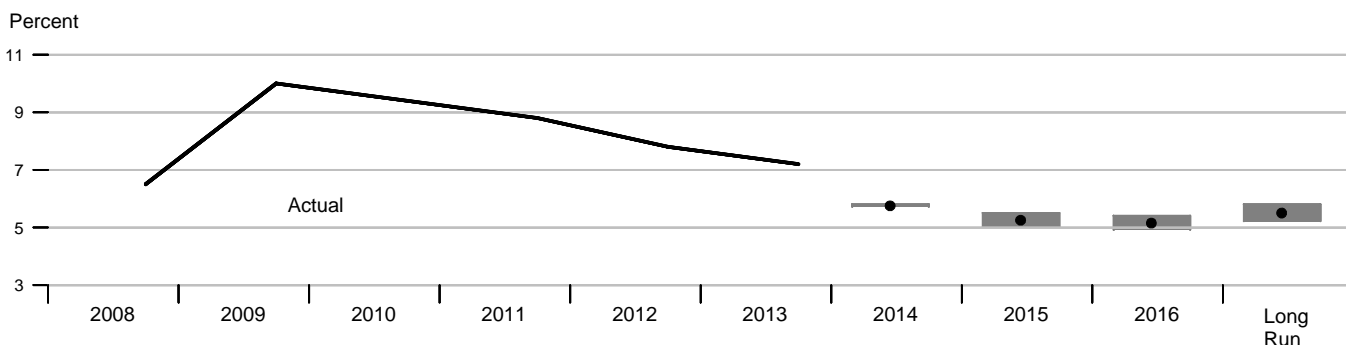


December 2014 Projections

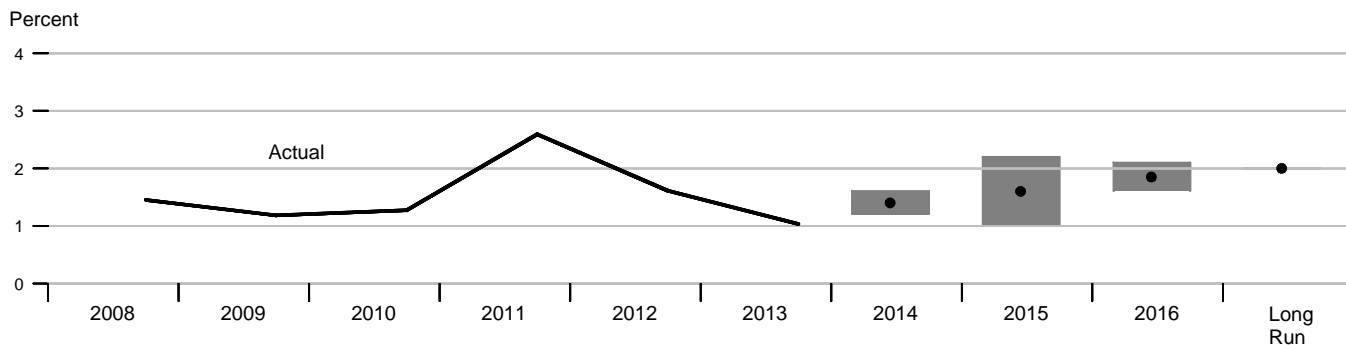
Change in Real GDP (Q4/Q4)



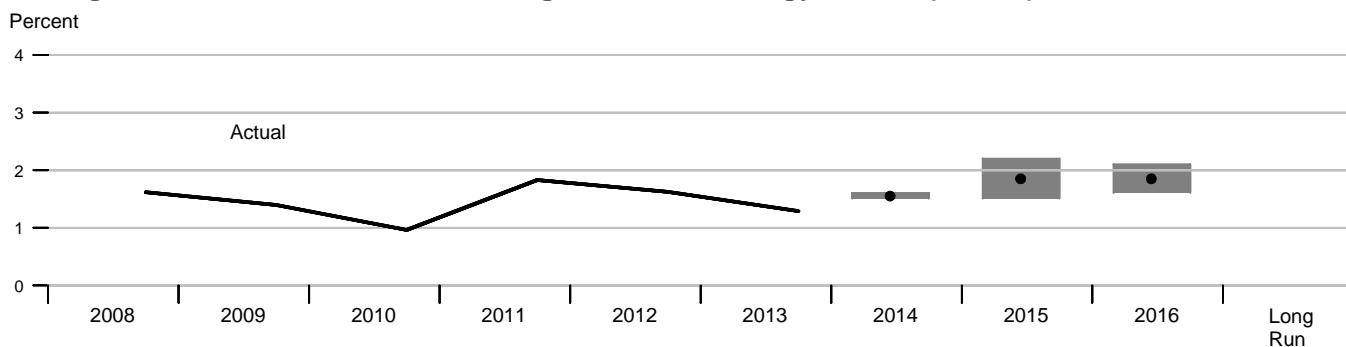
Unemployment Rate (Q4)



Change in PCE Price Index (Q4/Q4)

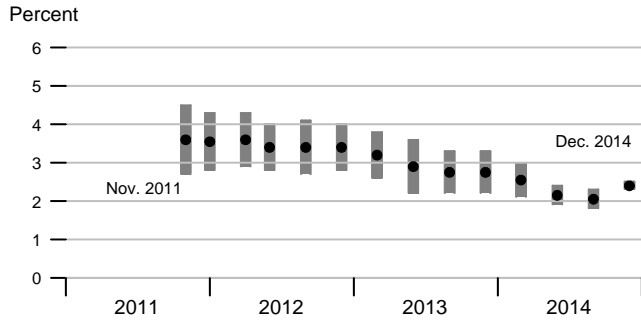


Change in PCE Price Index Excluding Food and Energy Prices (Q4/Q4)

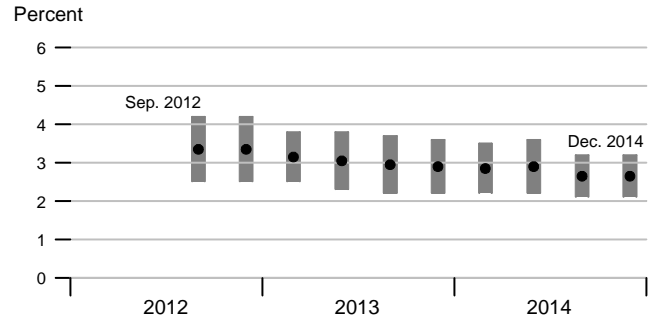


FOMC Quarterly Projections for 2014 and 2015: A Timeline

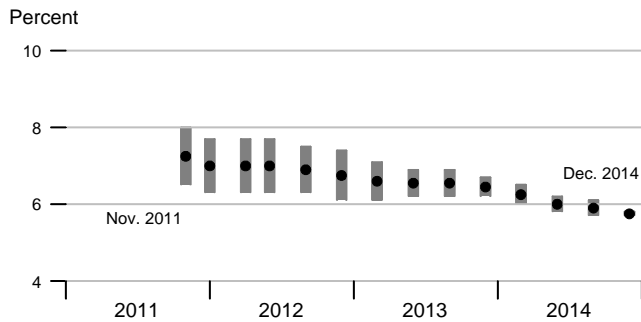
Change in Real GDP for 2014



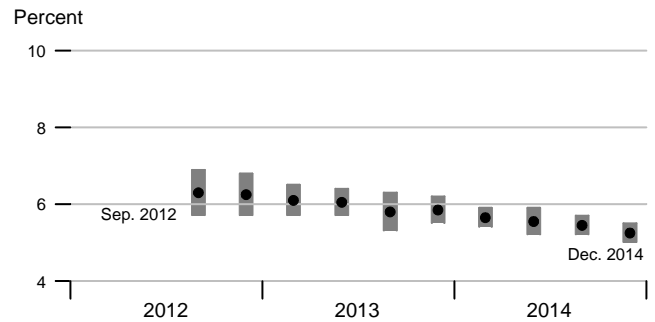
Change in Real GDP for 2015



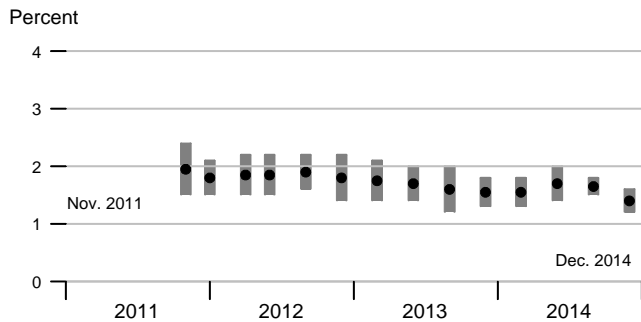
Unemployment Rate for 2014 (Q4)



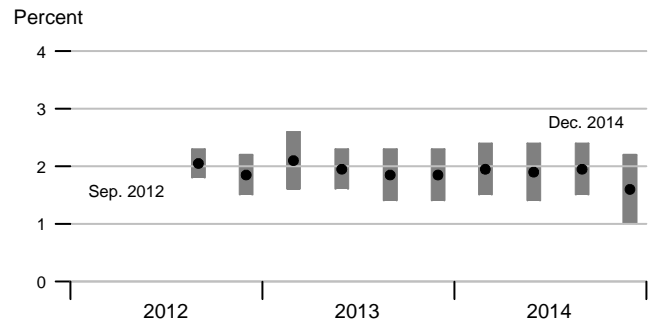
Unemployment Rate for 2015 (Q4)



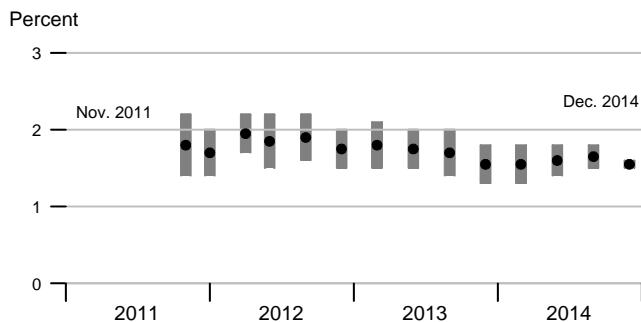
Change in PCE Price Index for 2014



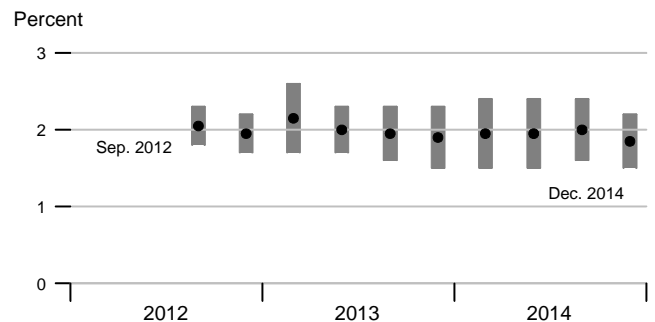
Change in PCE Price Index for 2015



Change in PCE Core Price Index for 2014



Change in PCE Core Price Index for 2015



	Nominal GDP			Real GDP			Final Sales			Change in Private Inventories			
	Billions of \$	Percent change		Billions of 2009 \$	Percent change		Billions of 2009 \$	Percent change		Billions of 2009 \$			
Annual rate		Year ago	Annual rate		Year ago	Annual rate		Year ago	Last qtr	Year/Year ago			
2011	15517.9		3.7	15020.565		1.6	14978.984		1.7		37.593		
2012	16163.2		4.2	15369.205		2.3	15304.325		2.2		57.048		
2013	16768.1		3.7	15710.295		2.2	15636.714		2.2		63.538		
2014	17420.7		3.9	16089.806		2.4	15991.706		2.3		78.843		
2011	1	15238.4	0.2	3.8	14881.301	-1.5	1.9	14855.331	-0.6	1.8	25.066	62.031	
	2	15460.9	6.0	3.8	14989.555	2.9	1.7	14924.472	1.9	1.6	57.519	64.221	
	3	15587.1	3.3	3.5	15021.149	0.8	1.2	15035.147	3.0	2.1	-13.027	31.908	
	4	15785.3	5.2	3.6	15190.255	4.6	1.7	15100.985	1.8	1.5	80.816	37.594	
2012	1	15956.5	4.4	4.7	15275.047	2.3	2.6	15195.618	2.5	2.3	70.912	49.055	
	2	16094.7	3.5	4.1	15336.735	1.6	2.3	15248.185	1.4	2.2	78.887	54.397	
	3	16268.9	4.4	4.4	15431.335	2.5	2.7	15350.878	2.7	2.1	71.151	75.442	
	4	16332.5	1.6	3.5	15433.702	0.1	1.6	15422.620	1.9	2.1	7.243	57.048	
2013	1	16502.4	4.2	3.4	15538.441	2.7	1.7	15499.590	2.0	2.0	33.443	47.681	
	2	16619.2	2.9	3.3	15606.591	1.8	1.8	15555.513	1.5	2.0	43.351	38.797	
	3	16872.3	6.2	3.7	15779.938	4.5	2.3	15671.026	3.0	2.1	95.564	44.900	
	4	17078.3	5.0	4.6	15916.208	3.5	3.1	15820.728	3.9	2.6	81.796	63.539	
2014	1	17044.0	-0.8	3.3	15831.652	-2.1	1.9	15782.550	-1.0	1.8	35.244	63.989	
	2	17328.2	6.8	4.3	16010.405	4.6	2.6	15905.876	3.2	2.3	84.772	74.344	
	3	17599.8	6.4	4.3	16205.591	5.0	2.7	16102.819	5.0	2.8	82.217	71.007	
	4	17710.7	2.5	3.7	16311.574	2.6	2.5	16175.580	1.8	2.2	113.138	78.843	
		Consumption			Durables Consumption			Private Fixed Investment			Nonresidential Fixed Investment		
		Billions of 2009 \$	Percent change		Billions of 2009 \$	Percent change		Billions of 2009 \$	Percent change		Billions of 2009 \$	Percent change	
			Annual rate	Year ago		Annual rate	Year ago		Annual rate	Year ago		Annual rate	Year ago
2011		10263.45		2.3	1151.531		6.1	2186.659		6.3	1802.259		7.7
2012		10449.67		1.8	1235.721		7.3	2368.004		8.3	1931.753		7.2
2013		10699.70		2.4	1319.021		6.7	2479.169		4.7	1990.593		3.0
2014		10967.83		2.5	1411.095		7.0	2608.081		5.2	2112.665		6.1
2011	1	10217.12	2.0	3.0	1141.775	5.2	9.2	2098.415	-0.9	5.0	1724.133	-0.9	6.8
	2	10237.68	0.8	2.4	1134.221	-2.6	5.4	2140.172	8.2	3.8	1760.969	8.8	6.1
	3	10282.23	1.8	2.2	1148.617	5.2	5.0	2227.456	17.3	8.1	1840.809	19.4	8.7
	4	10316.78	1.4	1.5	1181.511	12.0	4.8	2280.592	9.9	8.4	1883.125	9.5	9.0
2012	1	10387.55	2.8	1.7	1212.000	10.7	6.2	2330.674	9.1	11.1	1910.072	5.8	10.8
	2	10420.18	1.3	1.8	1218.770	2.3	7.5	2355.628	4.4	10.1	1930.575	4.4	9.6
	3	10470.38	1.9	1.8	1242.413	8.0	8.2	2373.729	3.1	6.6	1934.504	0.8	5.1
	4	10520.58	1.9	2.0	1269.702	9.1	7.5	2411.986	6.6	5.8	1951.860	3.6	3.7
2013	1	10613.66	3.6	2.2	1295.721	8.5	6.9	2427.954	2.7	4.2	1959.009	1.5	2.6
	2	10660.40	1.8	2.3	1309.988	4.5	7.5	2456.959	4.9	4.3	1966.834	1.6	1.9
	3	10713.30	2.0	2.3	1325.866	4.9	6.7	2496.800	6.6	5.2	1993.257	5.5	3.0
	4	10811.43	3.7	2.8	1344.507	5.7	5.9	2534.963	6.3	5.1	2043.272	10.4	4.7
2014	1	10844.29	1.2	2.2	1354.992	3.2	4.6	2536.121	0.2	4.5	2051.456	1.6	4.7
	2	10912.57	2.5	2.4	1400.378	14.1	6.9	2594.470	9.5	5.6	2099.594	9.7	6.7
	3	10999.54	3.2	2.7	1431.539	9.2	8.0	2643.262	7.7	5.9	2144.833	8.9	7.6
	4	11114.92	4.3	2.8	1457.472	7.4	8.4	2658.472	2.3	4.9	2154.777	1.9	5.5

	GDP Chain Price Index			Employment Cost Index			ECI: Wages			ECI: Benefits			
	Index	<u>Percent change</u>		Index	<u>Percent change</u>		Index	<u>Percent change</u>		Index	<u>Percent change</u>		
		Annual rate	Year ago		Annual rate	Year ago		Annual rate	Year ago		Annual rate	Year ago	
2011	103.315	2.1		114.3	2.1		114.0	1.6		115.1	3.5		
2012	105.174	1.8		116.5	2.0		116.1	1.8		117.7	2.2		
2013	106.739	1.5		118.7	1.9		118.2	1.9		120.0	1.9		
2014	108.309	1.5		121.2	2.1		120.6	2.0		122.7	2.3		
2011	1	102.409	1.8	1.9	113.3	2.1	2.0	113.2	1.1	1.6	113.6	5.1	3.0
	2	103.170	3.0	2.2	114.1	2.9	2.2	113.7	1.8	1.6	115.2	5.8	3.9
	3	103.770	2.3	2.3	114.6	1.8	2.2	114.2	1.8	1.7	115.4	0.7	3.4
	4	103.913	0.6	1.9	115.1	1.8	2.1	114.7	1.8	1.6	116.2	2.8	3.6
2012	1	104.461	2.1	2.0	115.7	2.1	2.1	115.3	2.1	1.9	116.8	2.1	2.8
	2	104.937	1.8	1.7	116.3	2.1	1.9	115.8	1.7	1.8	117.4	2.1	1.9
	3	105.475	2.1	1.6	116.8	1.7	1.9	116.3	1.7	1.8	117.9	1.7	2.2
	4	105.821	1.3	1.8	117.3	1.7	1.9	116.8	1.7	1.8	118.6	2.4	2.1
2013	1	106.172	1.3	1.6	117.8	1.7	1.8	117.3	1.7	1.7	119.1	1.7	2.0
	2	106.495	1.2	1.5	118.4	2.1	1.8	118.0	2.4	1.9	119.6	1.7	1.9
	3	106.943	1.7	1.4	119.0	2.0	1.9	118.5	1.7	1.9	120.3	2.4	2.0
	4	107.347	1.5	1.4	119.6	2.0	2.0	119.1	2.0	2.0	120.8	1.7	1.9
2014	1	107.694	1.3	1.4	119.9	1.0	1.8	119.3	0.7	1.7	121.2	1.3	1.8
	2	108.261	2.1	1.7	120.9	3.4	2.1	120.2	3.1	1.9	122.5	4.4	2.4
	3	108.643	1.4	1.6	121.7	2.7	2.3	121.1	3.0	2.2	123.2	2.3	2.4
	4	108.638	-0.0	1.2	122.4	2.3	2.3	121.8	2.3	2.3	123.9	2.3	2.6
		Exports			Imports			Nonfarm Output per Hour			Nonfarm Compensation per Hour		
		<u>Percent change</u>		Billions of 2009 \$	<u>Percent change</u>		Index	<u>Percent change</u>		Index	<u>Percent change</u>		
		Annual rate	Year ago		Annual rate	Year ago		Annual rate	Year ago		Annual rate	Year ago	
2011		1898.312	6.9		2357.670	5.5		103.459	0.1		104.205	2.2	
2012		1960.110	3.3		2412.600	2.3		104.510	1.0		107.060	2.7	
2013		2019.816	3.0		2440.259	1.1		105.433	0.9		108.276	1.1	
2014		2082.507	3.1		2535.136	3.9							
2011	1	1862.301	2.1	9.0	2328.482	3.1	10.0	103.126	-3.2	0.4	104.673	7.5	3.9
	2	1890.682	6.2	8.2	2345.931	3.0	5.8	103.452	1.3	0.4	104.072	-2.3	2.2
	3	1910.595	4.3	6.3	2364.918	3.3	3.0	103.226	-0.9	-0.3	104.683	2.4	2.2
	4	1929.669	4.1	4.2	2391.348	4.5	3.5	104.026	3.1	0.1	103.403	-4.8	0.6
2012	1	1935.988	1.3	4.0	2401.737	1.7	3.1	104.071	0.2	0.9	106.283	11.6	1.5
	2	1958.862	4.8	3.6	2425.543	4.0	3.4	104.545	1.8	1.1	106.458	0.7	2.3
	3	1969.127	2.1	3.1	2422.148	-0.6	2.4	104.979	1.7	1.7	106.407	-0.2	1.6
	4	1976.463	1.5	2.4	2400.973	-3.5	0.4	104.442	-2.0	0.4	109.077	10.4	5.5
2013	1	1972.302	-0.8	1.9	2399.453	-0.3	-0.1	104.653	0.8	0.6	107.319	-6.3	1.0
	2	2002.764	6.3	2.2	2448.788	8.5	1.0	104.778	0.5	0.2	108.300	3.7	1.7
	3	2027.684	5.1	3.0	2452.329	0.6	1.2	105.717	3.6	0.7	108.478	0.7	1.9
	4	2076.516	10.0	5.1	2460.468	1.3	2.5	106.572	3.3	2.0	108.996	1.9	-0.1
2014	1	2026.902	-9.2	2.8	2474.130	2.2	3.1	105.365	-4.5	0.7	110.747	6.6	3.2
	2	2080.726	11.1	3.9	2541.149	11.3	3.8	106.112	2.9	1.3	110.487	-0.9	2.0
	3	2103.965	4.5	3.8	2535.316	-0.9	3.4	106.727	2.3	1.0	110.857	1.3	2.2
	4	2118.436	2.8	2.0	2589.948	8.9	5.3						

		Household Survey Employment				Nonfarm Payroll Employment				Nonfarm Aggregate Hours			
		Thousands	Change	Percent change		Thousands	Change	Percent change		Index	Percent change		
				Annual rate	Year ago			Annual rate	Year ago		Monthly rate	Annual rate	Year ago
2010		139077	-817		-0.6	130272	-948		-0.7	98.9			0.1
2011		139882	804		0.6	131849	1576		1.2	101.4			2.5
2012		142467	2586		1.8	134098	2250		1.7	104.1			2.6
2013		143932	1465		1.0	136363	2264		1.7	106.1			2.0
2014		146303	2371		1.6	138890	2527		1.9	108.6			2.3
2012	1	141871	1202	3.5	1.7	133420	777	2.4	1.8	103.6	0.9	3.8	3.4
	2	142195	324	0.9	1.9	133856	436	1.3	1.7	103.8	0.2	0.9	2.6
	3	142500	305	0.9	1.9	134265	409	1.2	1.6	104.1	0.3	1.0	2.3
	4	143303	803	2.3	1.9	134854	589	1.8	1.7	104.8	0.7	2.8	2.1
2013	1	143377	74	0.2	1.1	135495	641	1.9	1.6	105.5	0.7	2.8	1.9
	2	143860	483	1.4	1.2	136085	590	1.8	1.7	106.0	0.4	1.7	2.1
	3	144287	427	1.2	1.3	136623	539	1.6	1.8	106.2	0.2	0.8	2.0
	4	144205	-82	-0.2	0.6	137248	624	1.8	1.8	106.8	0.6	2.3	1.9
2014	1	145434	1230	3.5	1.4	137755	507	1.5	1.7	107.1	0.3	1.4	1.5
	2	145946	512	1.4	1.5	138510	755	2.2	1.8	108.3	1.1	4.4	2.2
	3	146486	540	1.5	1.5	139233	723	2.1	1.9	109.0	0.6	2.6	2.7
	4	147344	858	2.4	2.2	140061	829	2.4	2.1	110.0	0.9	3.6	3.0
2012	Dec	143280	1	0.0	1.7	135064	214	1.9	1.7	105.1	0.2	2.3	2.2
2013	Jan	143328	48	0.4	1.2	135261	197	1.8	1.6	104.9	-0.2	-2.3	1.4
	Feb	143429	101	0.8	1.1	135541	280	2.5	1.6	105.8	0.9	10.8	2.2
	Mar	143374	-55	-0.5	0.9	135682	141	1.3	1.5	105.9	0.1	1.1	2.1
	Apr	143665	291	2.5	1.2	135885	203	1.8	1.6	105.8	-0.1	-1.1	1.9
	May	143890	225	1.9	1.2	136084	199	1.8	1.7	106.0	0.2	2.3	2.3
	Jun	144025	135	1.1	1.1	136285	201	1.8	1.7	106.1	0.1	1.1	2.0
	Jul	144275	250	2.1	1.4	136434	149	1.3	1.7	105.7	-0.4	-4.4	1.5
	Aug	144288	13	0.1	1.4	136636	202	1.8	1.8	106.5	0.8	9.5	2.4
	Sep	144297	9	0.1	0.9	136800	164	1.4	1.8	106.3	-0.2	-2.2	2.1
	Oct	143453	-844	-6.8	0.1	137037	237	2.1	1.8	106.6	0.3	3.4	2.1
	Nov	144490	1037	9.0	0.8	137311	274	2.4	1.8	107.1	0.5	5.8	2.1
	Dec	144671	181	1.5	1.0	137395	84	0.7	1.7	106.6	-0.5	-5.5	1.4
2014	Jan	145206	535	4.5	1.3	137539	144	1.3	1.7	107.0	0.4	4.6	2.0
	Feb	145301	95	0.8	1.3	137761	222	2.0	1.6	106.6	-0.4	-4.4	0.8
	Mar	145796	495	4.2	1.7	137964	203	1.8	1.7	107.8	1.1	14.4	1.8
	Apr	145724	-72	-0.6	1.4	138268	304	2.7	1.8	108.1	0.3	3.4	2.2
	May	145868	144	1.2	1.4	138497	229	2.0	1.8	108.3	0.2	2.2	2.2
	Jun	146247	379	3.2	1.5	138764	267	2.3	1.8	108.5	0.2	2.2	2.3
	Jul	146401	154	1.3	1.5	139007	243	2.1	1.9	108.7	0.2	2.2	2.8
	Aug	146451	50	0.4	1.5	139210	203	1.8	1.9	109.2	0.5	5.7	2.5
	Sep	146607	156	1.3	1.6	139481	271	2.4	2.0	109.1	-0.1	-1.1	2.6
	Oct	147260	653	5.5	2.7	139742	261	2.3	2.0	109.6	0.5	5.6	2.8
	Nov	147331	71	0.6	2.0	140095	353	3.1	2.0	109.9	0.3	3.3	2.6
	Dec	147442	111	0.9	1.9	140347	252	2.2	2.1	110.4	0.5	5.6	3.6

	Unempl. Rate	Retail and Food Services Sales				Industrial Production				Treasury Yields	
		Billions of dollars	Percent change			Index	Percent change			(Percent)	
			Monthly/ quarterly	Annual rate	Year ago		Monthly/ quarterly	Annual rate	Year ago	3-mo	10-yr
2010	9.6	4306.440			5.5	90.5712			5.7	0.14	3.21
2011	8.9	4627.486			7.5	93.5936			3.3	0.05	2.79
2012	8.1	4863.347			5.1	97.1335			3.8	0.09	1.80
2013	7.4	5066.933			4.2	99.9322			2.9	0.06	2.35
2014	6.2	5265.978			3.9	104.1794			4.3	0.03	2.54
2012	1	1204.848	1.9	7.6	6.4	96.1322	1.3	5.2	3.8	0.07	2.04
	2	1204.434	-0.0	-0.1	4.7	97.0236	0.9	3.8	4.5	0.09	1.82
	3	1217.924	1.1	4.6	4.8	97.4024	0.4	1.6	3.6	0.10	1.64
	4	1236.141	1.5	6.1	4.5	97.9760	0.6	2.4	3.2	0.09	1.71
2013	1	1254.179	1.5	6.0	4.1	98.9801	1.0	4.2	3.0	0.09	1.95
	2	1258.320	0.3	1.3	4.5	99.4452	0.5	1.9	2.5	0.05	2.00
	3	1271.228	1.0	4.2	4.4	100.0532	0.6	2.5	2.7	0.03	2.71
	4	1283.206	0.9	3.8	3.8	101.2504	1.2	4.9	3.3	0.06	2.75
2014	1	1285.509	0.2	0.7	2.5	102.2229	1.0	3.9	3.3	0.05	2.76
	2	1315.663	2.3	9.7	4.6	103.6591	1.4	5.7	4.2	0.03	2.62
	3	1329.478	1.1	4.3	4.6	104.7014	1.0	4.1	4.6	0.03	2.50
	4	1335.328	0.4	1.8	4.1	106.1341	1.4	5.6	4.8	0.02	2.28
2013	Jan	416.542	0.7	8.9	4.7	98.4084	0.1	0.6	2.5	0.07	1.91
	Feb	420.654	1.0	12.5	4.4	99.0438	0.6	8.0	2.8	0.10	1.98
	Mar	416.983	-0.9	-10.0	3.2	99.4880	0.4	5.5	3.6	0.09	1.96
	Apr	417.151	0.0	0.5	3.5	99.3112	-0.2	-2.1	2.6	0.06	1.76
	May	419.491	0.6	6.9	4.2	99.4162	0.1	1.3	2.4	0.04	1.93
	Jun	421.678	0.5	6.4	5.7	99.6083	0.2	2.3	2.5	0.05	2.30
	Jul	424.000	0.6	6.8	5.7	99.4432	-0.2	-2.0	1.8	0.04	2.58
	Aug	422.861	-0.3	-3.2	4.1	99.9987	0.6	6.9	3.0	0.04	2.74
	Sep	424.367	0.4	4.4	3.3	100.7177	0.7	9.0	3.4	0.02	2.81
	Oct	426.796	0.6	7.1	4.0	100.8190	0.1	1.2	3.6	0.05	2.62
	Nov	427.081	0.1	0.8	3.6	101.3750	0.6	6.8	3.2	0.07	2.72
	Dec	429.329	0.5	6.5	3.8	101.5572	0.2	2.2	3.3	0.07	2.90
2014	Jan	423.937	-1.3	-14.1	1.8	101.3061	-0.2	-2.9	2.9	0.04	2.86
	Feb	427.554	0.9	10.7	1.6	102.2567	0.9	11.9	3.2	0.05	2.71
	Mar	434.018	1.5	19.7	4.1	103.1059	0.8	10.4	3.6	0.05	2.72
	Apr	436.730	0.6	7.8	4.7	103.1885	0.1	1.0	3.9	0.03	2.71
	May	438.605	0.4	5.3	4.6	103.6839	0.5	5.9	4.3	0.03	2.56
	Jun	440.328	0.4	4.8	4.4	104.1050	0.4	5.0	4.5	0.04	2.60
	Jul	441.506	0.3	3.3	4.1	104.4671	0.3	4.3	5.1	0.03	2.54
	Aug	444.150	0.6	7.4	5.0	104.3507	-0.1	-1.3	4.4	0.03	2.42
	Sep	443.822	-0.1	-0.9	4.6	105.2863	0.9	11.3	4.5	0.02	2.53
	Oct	445.276	0.3	4.0	4.3	105.2619	-0.0	-0.3	4.4	0.02	2.30
	Nov	447.121	0.4	5.1	4.7	106.6291	1.3	16.7	5.2	0.02	2.33
	Dec	442.931	-0.9	-10.7	3.2	106.5114	-0.1	-1.3	4.9	0.03	2.21
2015	Jan									0.03	1.88

		Consumer Price Index					Consumer Price Index less Food and Energy					Producer Price Index Final Demand			
		Percent change					Percent change					Percent change			
		Index	Monthly/ quarterly	Annual rate	Year ago	Year to date	Index	Monthly/ quarterly	Annual rate	Year ago	Year to date	Index	Monthly/ quarterly	Annual rate	Year ago
2011		224.932			3.1		225.007			1.7		105.7			3.9
2012		229.599			2.1		229.755			2.1		107.7			1.9
2013		232.960			1.5		233.806			1.8		109.1			1.3
2014		236.714			1.6		237.896			1.7		110.9			1.6
2012	1	228.179	0.5	2.1	2.8	2.1	228.033	0.5	2.0	2.2	2.0	107.2	0.6	2.4	2.7
	2	228.964	0.3	1.4	1.9	1.7	229.393	0.6	2.4	2.3	2.2	107.5	0.3	1.1	1.6
	3	229.939	0.4	1.7	1.7	1.7	230.298	0.4	1.6	2.0	2.0	107.7	0.2	0.9	1.3
	4	231.314	0.6	2.4	1.9	1.9	231.298	0.4	1.7	1.9	1.9	108.4	0.7	2.8	1.8
2013	1	231.998	0.3	1.2	1.7	1.2	232.449	0.5	2.0	1.9	2.0	108.7	0.2	1.0	1.4
	2	232.230	0.1	0.4	1.4	0.8	233.240	0.3	1.4	1.7	1.7	108.8	0.1	0.4	1.2
	3	233.476	0.5	2.2	1.5	1.2	234.289	0.4	1.8	1.7	1.7	109.4	0.5	2.1	1.5
	4	234.136	0.3	1.1	1.2	1.2	235.246	0.4	1.6	1.7	1.7	109.7	0.3	1.2	1.2
2014	1	235.247	0.5	1.9	1.4	1.9	236.190	0.4	1.6	1.6	1.6	110.2	0.5	2.0	1.4
	2	237.010	0.7	3.0	2.1	2.5	237.674	0.6	2.5	1.9	2.1	110.9	0.6	2.4	1.9
	3	237.657	0.3	1.1	1.8	2.0	238.444	0.3	1.3	1.8	1.8	111.4	0.5	1.8	1.9
	4	236.941	-0.3	-1.2	1.2	1.2	239.278	0.3	1.4	1.7	1.7	111.2	-0.2	-0.8	1.3
2012	Dec	231.099	-0.0	-0.5	1.8	1.8	231.562	0.1	1.2	1.9	1.9	108.5	0.1	1.1	1.9
2013	Jan	231.321	0.1	1.2	1.6	1.2	232.084	0.2	2.7	1.9	2.7	108.6	0.1	1.1	1.6
	Feb	232.599	0.6	6.8	2.0	4.0	232.496	0.2	2.2	2.0	2.4	108.8	0.2	2.2	1.5
	Mar	232.075	-0.2	-2.7	1.5	1.7	232.766	0.1	1.4	1.9	2.1	108.7	-0.1	-1.1	1.2
	Apr	231.707	-0.2	-1.9	1.1	0.8	232.909	0.1	0.7	1.7	1.8	108.7	0.0	0.0	1.0
	May	232.124	0.2	2.2	1.4	1.1	233.230	0.1	1.7	1.7	1.7	108.6	-0.1	-1.1	1.0
	Jun	232.860	0.3	3.9	1.8	1.5	233.581	0.2	1.8	1.6	1.8	109.1	0.5	5.7	1.7
	Jul	233.252	0.2	2.0	2.0	1.6	233.971	0.2	2.0	1.7	1.8	109.4	0.3	3.4	2.0
	Aug	233.433	0.1	0.9	1.5	1.5	234.294	0.1	1.7	1.8	1.8	109.3	-0.1	-1.1	1.6
	Sep	233.743	0.1	1.6	1.1	1.5	234.603	0.1	1.6	1.7	1.8	109.4	0.1	1.1	1.1
	Oct	233.782	0.0	0.2	0.9	1.4	234.893	0.1	1.5	1.7	1.7	109.7	0.3	3.3	1.2
	Nov	234.033	0.1	1.3	1.2	1.4	235.304	0.2	2.1	1.7	1.8	109.7	0.0	0.0	1.2
	Dec	234.594	0.2	2.9	1.5	1.5	235.542	0.1	1.2	1.7	1.7	109.7	0.0	0.0	1.1
2014	Jan	234.933	0.1	1.7	1.6	1.7	235.843	0.1	1.5	1.6	1.5	110.0	0.3	3.3	1.3
	Feb	235.169	0.1	1.2	1.1	1.5	236.122	0.1	1.4	1.6	1.5	110.2	0.2	2.2	1.3
	Mar	235.640	0.2	2.4	1.5	1.8	236.604	0.2	2.5	1.6	1.8	110.5	0.3	3.3	1.7
	Apr	236.254	0.3	3.2	2.0	2.1	237.163	0.2	2.9	1.8	2.1	110.7	0.2	2.2	1.8
	May	237.083	0.4	4.3	2.1	2.6	237.776	0.3	3.1	1.9	2.3	110.9	0.2	2.2	2.1
	Jun	237.693	0.3	3.1	2.1	2.7	238.083	0.1	1.6	1.9	2.2	111.1	0.2	2.2	1.8
	Jul	237.909	0.1	1.1	2.0	2.4	238.311	0.1	1.2	1.9	2.0	111.6	0.5	5.5	2.0
	Aug	237.428	-0.2	-2.4	1.7	1.8	238.345	0.0	0.2	1.7	1.8	111.4	-0.2	-2.1	1.9
	Sep	237.633	0.1	1.0	1.7	1.7	238.677	0.1	1.7	1.7	1.8	111.2	-0.2	-2.1	1.6
	Oct	237.642	0.0	0.0	1.7	1.6	239.162	0.2	2.5	1.8	1.8	111.4	0.2	2.2	1.5
	Nov	237.032	-0.3	-3.0	1.3	1.1	239.332	0.1	0.9	1.7	1.8	111.2	-0.2	-2.1	1.4
	Dec	236.149	-0.4	-4.4	0.7	0.7	239.339	0.0	0.0	1.6	1.6	110.9	-0.3	-3.2	1.1

Notes

Pages 4, 5: **Final Sales** is gross domestic product (GDP) minus change in private inventories. **Advance, Second, and Third GDP Growth Rates** are released during the first, second, and third months of the following quarter. Changes result from incorporation of more complete information. Real GDP is measured in 2009 dollars. The **ISM** (formerly Purchasing Managers') **Index** is a weighted average of diffusion indexes for new orders, production, supplier deliveries, inventories, and employment. **Aggregate and Average Weekly Hours** are paid hours of production and nonsupervisory employees. The **Inventory-Sales Ratio** uses nominal (current-dollar) inventory and sales data.

Page 6: For information on how to calculate the **Contribution** of a component to the overall GDP growth rate, see the October 1999 issue of the Survey of Current Business, p. 16. The sign is changed for **Imports**.

Page 7: Ten-year **Treasury Yields** are adjusted to constant maturity; three-month yields are secondary market averages. All rates used in the yield curves are adjusted to constant maturity. **Standard and Poor's 500 Index with Reinvested Dividends** shows the total return: capital gains plus dividends.

Pages 8, 9: **Oil** (West Texas intermediate) and **Natural Gas** (Henry Hub) spot and futures **prices** are listed in the *Wall Street Journal*. Spot prices are monthly averages of daily prices; futures prices are usually taken from the last trading day of the month. **Consumer Price Index** is for all urban consumers. The **Consumption Chain Price Index** is the index associated with the personal consumption expenditures component of GDP. The **Employment Cost Index (ECI)** covers private nonfarm employers. **ECI Compensation** refers to a fixed sample of jobs, while **Compensation per Hour** covers all workers in the nonfarm business sector in a given quarter. In both cases, compensation is wages and salaries plus benefits.

Pages 10, 11: Effective with the January 2008 **Employment Situation**, the establishment survey data for employment, hours, and earnings have been converted from the 2002 NAICS system to the 2007 NAICS system. For more information see <http://www.bls.gov/ces/>. **Nonfarm Payroll Employment** is counted in a survey of about 400,000 establishments (Current Employment Statistics). It excludes self-employed individuals and workers in private households, but double-counts individuals with more than one job. The **Household Survey** (Current Population Survey) of about 60,000 households provides estimates of civilian employment, unemployment rate, labor force participation rate, and employment-population ratio. **Population** is civilian, noninstitutional, 16 years and over. The 90 percent confidence intervals for the unemployment rate (± 0.2 percentage points) and change in household survey employment ($\pm 430,000$) measure uncertainty due to sample size. Because the household survey was changed in January 1994, data prior to this date are not strictly comparable. The Bureau of Labor Statistics announced several revisions to the Household Survey on Feb. 7, 2003, with the release of the January 2003 data. For more information, see www.bls.gov/cps/. The **Job Openings rate** is the number of job openings on the last business day of the month as a percent of total employment plus job openings.

Page 13: The **Michigan Consumer Sentiment Index** shows changes in a summary measure of consumers' answers to five questions about their current and expected financial situation, expectations about future economic conditions, and attitudes about making large purchases. The survey is based on a representative sample of U.S. households.

Page 15: **Gross Private Saving** is the sum of personal saving, undistributed corporate profits with IVA and CCA_{adj} (see notes for pp. 18-19), and private wage accruals less disbursements. **Gross Government Saving** is net government saving (surplus/deficit) plus consumption of fixed capital. **Balance on Current Account (NIPA)** is net capital transfer payments to the rest of the world plus net lending or net borrowing (international trade and income flows).

Pages 16, 17: **Government Consumption and Investment** is current expenditures on goods and services, including capital consumption (depreciation) and gross investment, as reported in the NIPAs. The **Unified Federal Budget Surplus/Deficit** differs from **NIPA Basis** in four main ways: (1) NIPA excludes transactions involving existing assets; (2) NIPA outlays exclude government investment and include consumption of government capital, while unified budget outlays do the reverse; (3) NIPA accounts exclude Puerto Rico and U.S. territories; and (4) various timing issues are handled differently. **Outlays and Receipts** are from the NIPAs, except as noted. Since 1977, the federal **Fiscal Year** starts on October 1. Excluded agency debt was 0.6 percent of federal debt at the end of fiscal 1997. **Federal Debt Held by the Public** includes holdings of the Federal Reserve System and excludes holdings of the social security and other federal trust funds. Federal grants in aid to state and local governments appear in both state and local receipts and federal outlays.

Pages 18, 19: The **Trade Balance** (shown on a balance of payments basis) is the difference between exports and imports of goods (merchandise) and services. It is nearly identical in concept to the **Net Exports** component of GDP, but differs slightly in accounting details. The **Investment Income Balance** equals income received from U.S.-owned assets in other countries minus income paid on foreign-owned assets in the U.S. The investment income balance is nearly identical in concept to the difference between gross national product and gross domestic product, but differs in accounting details. The **Current Account Balance** is the trade balance plus the balance on investment income plus net unilateral transfers to the U.S. from other countries.

Pages 20, 21: **Output per Hour (Y/H)**, **Unit Labor Cost (C/Y)**, and **Compensation per Hour (C/H)** are indexes which approximately obey the following relationship: $\%(Y/H) + \%(C/Y) = \%(C/H)$ with $\%()$ meaning percent changes. Unit labor cost is shown on page 9. **Real Compensation per Hour** uses the CPI to adjust for the effects of inflation. Nonfarm business accounted for about 77 percent of the value of GDP in 2000, while nonfinancial corporations accounted for about 54 percent. **Inventory Valuation Adjustments (IVA)** remove the effect of changes in the value of existing inventories from corporate profits and proprietors' income. (This change in value does not correspond to current production and therefore is not part of GDP). **Capital Consumption Adjustments (CCA_{adj})** increase profits and proprietors' income by the difference between estimates of economic depreciation and depreciation allowed by the tax code. Components of national income not shown are rental income of persons and net interest.

Pages 22, 23: The economic projections of the **Federal Open Market Committee (FOMC)** are published four times a year. Except for the unemployment rate, the projections for the current and following years are on a Q4/Q4 horizon. The shaded area represents the range of the economic projections of the FOMC members, and the dot signifies the mid-point of the ranges. The projections of the changes in the total PCE price index and the core PCE price index (excluding food and energy prices) are presumed to converge over time.

Sources

Bureau of Economic Analysis (BEA), U.S. Dept. of Commerce

National income and product accounts, international trade and investment data (except by country), auto and light truck sales.

Census Bureau, U.S. Dept. of Commerce

Inventory-sales ratios, retail sales, capital goods orders, housing starts, exports and imports by country.

Bureau of Labor Statistics (BLS), U.S. Dept. of Labor

All employment-related data, employment cost index, consumer and producer price indexes, unit labor cost, output per hour, compensation per hour, multifactor productivity.

United States Department of Treasury

Unified budget receipts, outlays, deficit, debt.

Federal Reserve Board

Index of industrial production, treasury yields, exchange rates, capacity utilization, household debt.

The Survey Research Center, The University of Michigan

Consumer sentiment index.

Organization for Economic Cooperation and Development (OECD)

GDP for major trading partners (not available on FRED).

S&P Dow Jones Indices LLC

Copyright © 2014, S&P Dow Jones Indices LLC. All rights reserved. Reproduction of Standard and Poor's 500 with Reinvested Dividends in any form is prohibited except with the prior written permission of S&P Dow Jones Indices LLC ("S&P"). S&P does not guarantee the accuracy, adequacy, completeness or availability of any information and is not responsible for any errors or omissions, regardless of the cause or for the results obtained from the use of such information. S&P DISCLAIMS ANY AND ALL EXPRESS OR IMPLIED WARRANTIES, INCLUDING, BUT NOT LIMITED TO, ANY WARRANTIES OF MERCHANTABILITY OR FITNESS FOR A PARTICULAR PURPOSE OR USE. In no event shall S&P be liable for any direct, indirect, special or consequential damages, costs, expenses, legal fees, or losses (including lost income or lost profit and opportunity costs) in connection with subscriber's or others' use of S&P 500.

Permission to reproduce this series can be requested from index_services@spdji.com. More contact details are available from <http://us.spindices.com/contact-us/>, including phone numbers for all of its regional offices.