



## What Do You Get for “Sixteen Tons”?

You load sixteen tons, and what do you get?  
Another day older and deeper in debt.

—Merle Travis

The chorus from Travis’s 1947 song about the plight of coal miners might ring true for someone looking at average hourly earnings (AHE) of production and nonsupervisory workers. By this measure, as shown in the chart, the pay for an hour of work fell in real terms by 3 percent between 1975 and 2006. Is the average worker actually receiving less per hour of work today than 31 years ago? The answer is likely no. In fact, an alternative measure of compensation, national labor income per hour, increased 44 percent during this period. What accounts for these conflicting results and why do we conclude that the average worker’s real compensation per hour has increased since the mid-1970s?

Both the AHE and the national labor income series are adjusted for inflation. However, AHE is adjusted using the consumer price index for all urban wage earners and clerical workers (CPI-W), while national labor income per hour is adjusted using the personal consumption expenditures (PCE) implicit price deflator. To calculate the purchasing power of an hour of work, it is more appropriate to use the PCE implicit price deflator to adjust for inflation because this index better reflects the basket of goods and services actually consumed. Contrary to the CPI-W, which assumes that the same basket of goods and services is purchased for several years, the PCE deflator is calculated using expenditures from the current and preceding period. After applying the PCE deflator, AHE show an 11 percent increase rather than a 3 percent decrease between 1975 and 2006.

Another difference in the construction of the two data series is that national labor income per hour includes not only wages and salaries, but also fringe benefits. Given the importance of benefits to a worker’s standard of living, we think many would disagree with the use of the label “fringe.” The benefits of employer contributions to worker’s pension and insurance funds and to government social insurance are included in

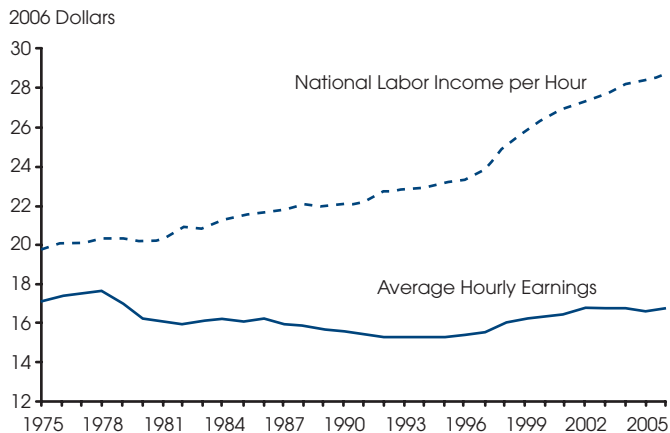
national labor income per hour, but are not in the AHE series.<sup>1</sup> These benefits have become a larger share of worker compensation over time, rising from 14 percent in 1975 to 19 percent in 2006. Once the AHE data are adjusted to include estimated benefits per hour and the PCE deflator is applied, the calculated increase in real wages and benefits reaches 16 percent between 1975 and 2006.

Without question, the 16 percent increase in average hourly earnings following the two adjustments described above remains far short of the 44 percent increase in national labor income per hour. What accounts for the remaining difference is unclear. Part of the difference is likely due to the fact that the AHE is restricted to production and nonsupervisory workers. What is clear, however, is that the average worker is receiving more in 2006 for “sixteen tons” than 31 years ago.

—Cletus C. Coughlin and Lesli S. Ott

<sup>1</sup> For details on the construction of national labor income per hour and insights on distributional issues, see Fitzgerald, Terry J. “Has Middle America Stagnated? A Closer Look at Hourly Wages.” Federal Reserve Bank of Minneapolis *The Region*, September 2007; [www.minneapolisfed.org/pubs/region/07-09/wages.cfm](http://www.minneapolisfed.org/pubs/region/07-09/wages.cfm).

**Average Hourly Earnings vs. National Labor Income per Hour, 1975-2006**



SOURCE: Bureau of Labor Statistics, Bureau of Economic Analysis.

Views expressed do not necessarily reflect official positions of the Federal Reserve System.

# Contents

---

---

## Page

3	Economy at a Glance
4	Output and Growth
7	Interest Rates
8	Inflation and Prices
10	Labor Markets
12	Consumer Spending
14	Investment Spending
16	Government Revenues, Spending, and Debt
18	International Trade
20	Productivity and Profits
22	Quick Reference Tables
27	Notes and Sources

## Conventions used in this publication:

1. Shaded areas indicate recessions, as determined by the National Bureau of Economic Research.
2. *Percent change* refers to simple percent changes. *Percent change from year ago* refers to the percent change from the same month or quarter during the previous year. *Compounded annual rate of change* shows what the growth rate would be over an entire year if the same simple percent change continued for four quarters or twelve months. The compounded annual rate of change of  $x$  between the previous quarter  $t-1$  and the current quarter  $t$  is:  $[(x_t/x_{t-1})^4 - 1] \times 100$ . For monthly data replace 4 with 12.
3. All data with significant seasonal patterns are adjusted accordingly, unless labeled NSA.

We welcome your comments addressed to:

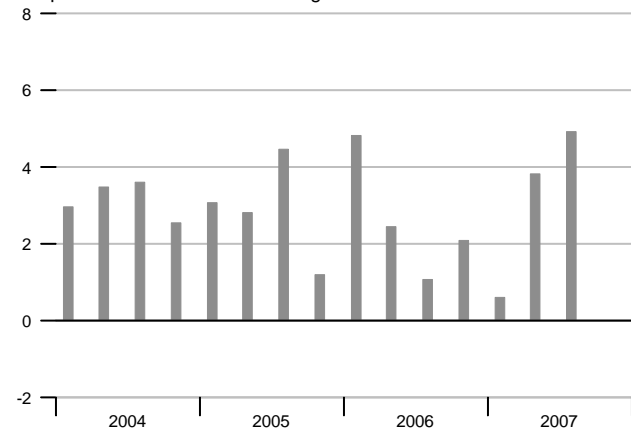
Editor, *National Economic Trends*  
Research Division  
Federal Reserve Bank of St. Louis  
P.O. Box 442  
St. Louis, MO 63166-0442

or to:

stlsFRED@stls.frb.org

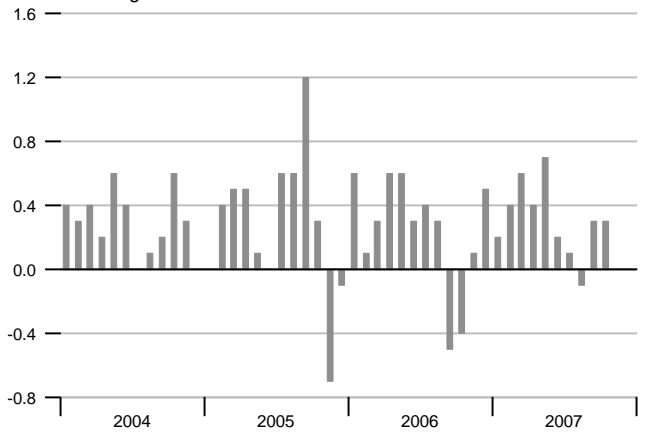
### Real GDP Growth

Compounded annual rates of change



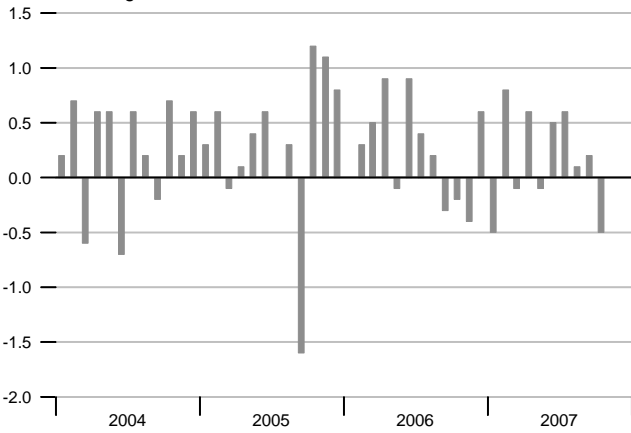
### Consumer Price Index

Percent change



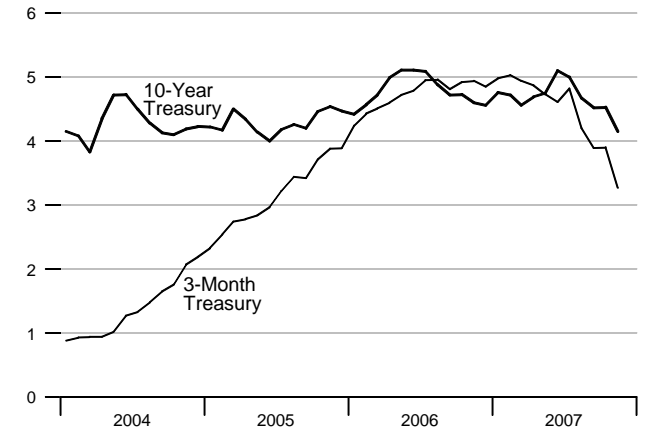
### Industrial Production

Percent change



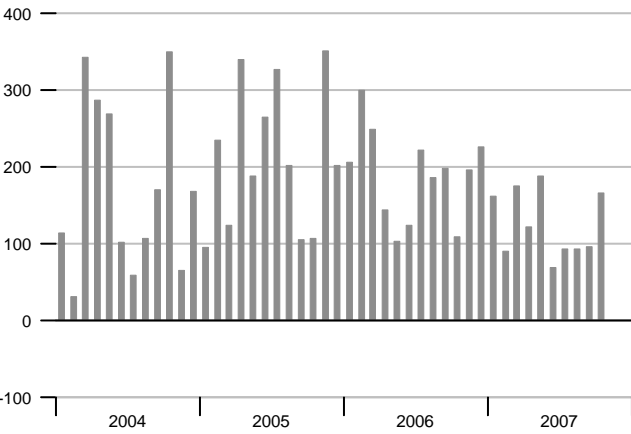
### Interest Rates

Percent



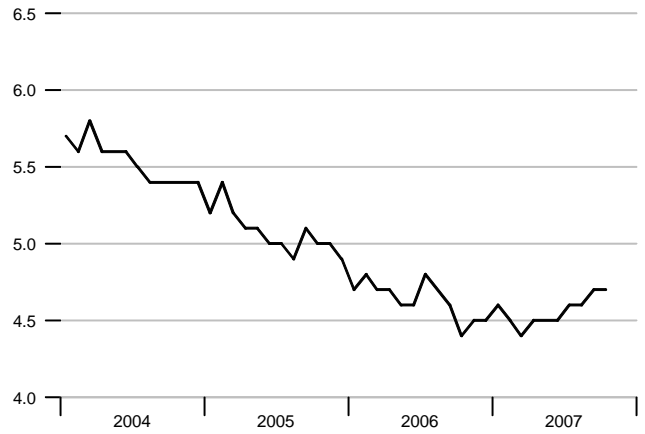
### Change in Nonfarm Payrolls

Thousands



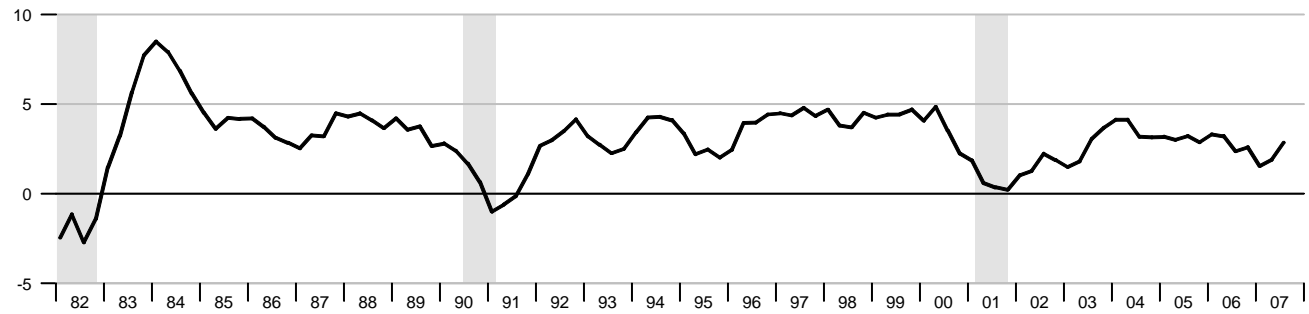
### Unemployment Rate

Percent of labor force



### Real Gross Domestic Product

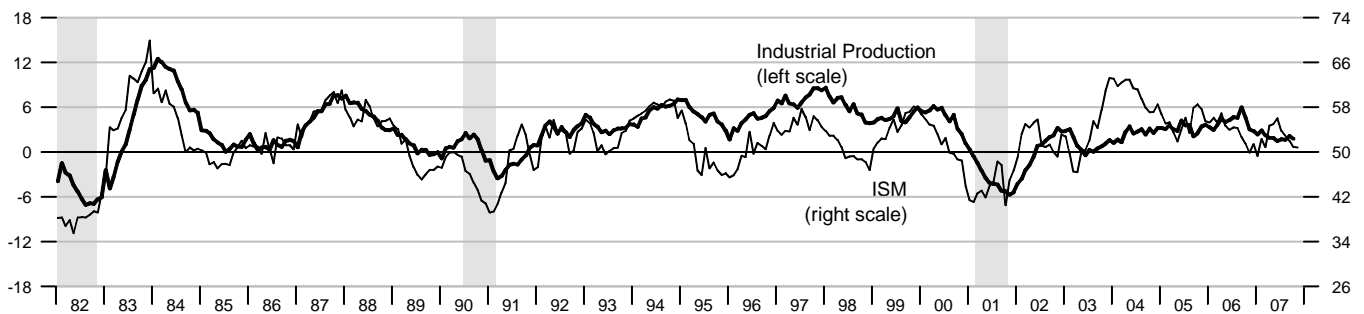
Percent change from year ago



### Industrial Production and Institute for Supply Management (ISM) Indexes

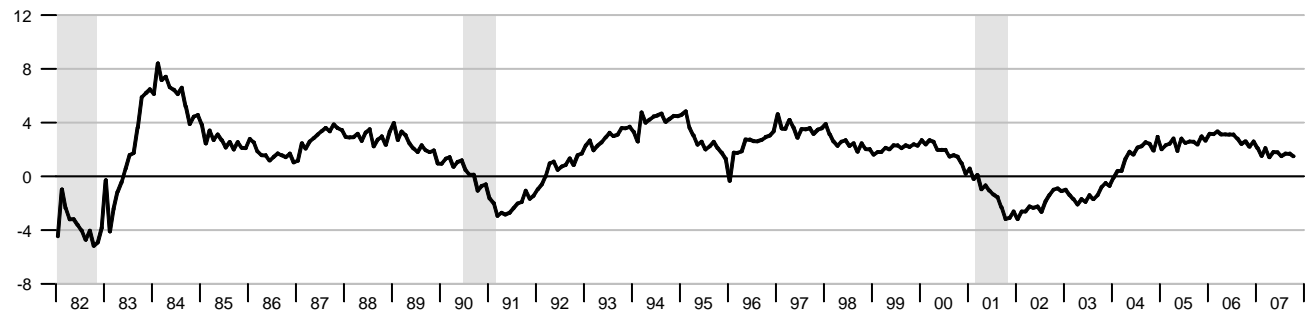
Percent change from year ago

Index



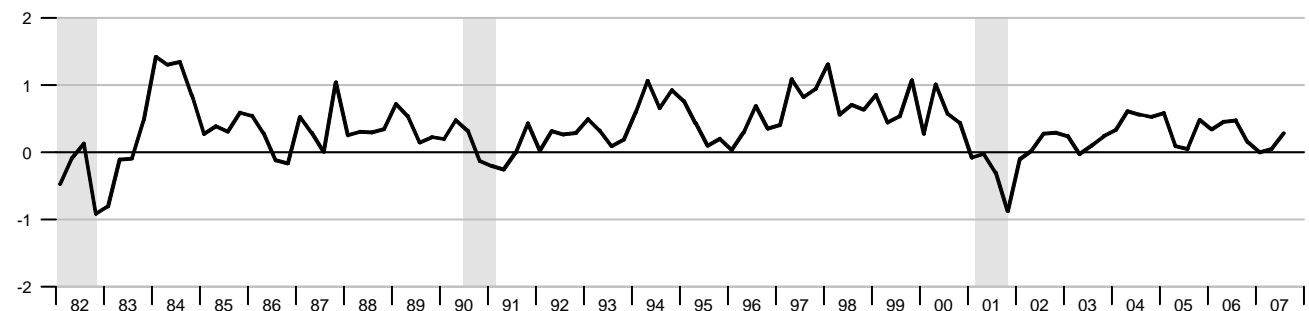
### Aggregate Private Nonfarm Hours

Percent change from year ago

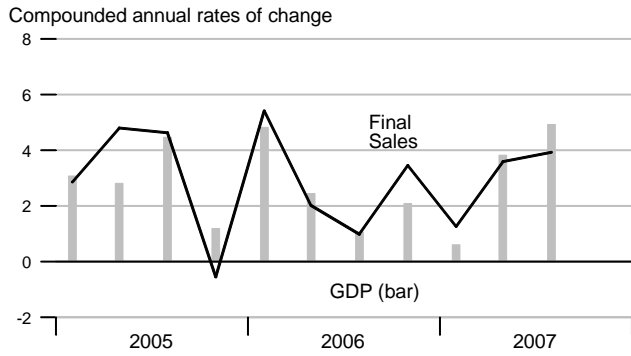


### Real Change in Private Inventories

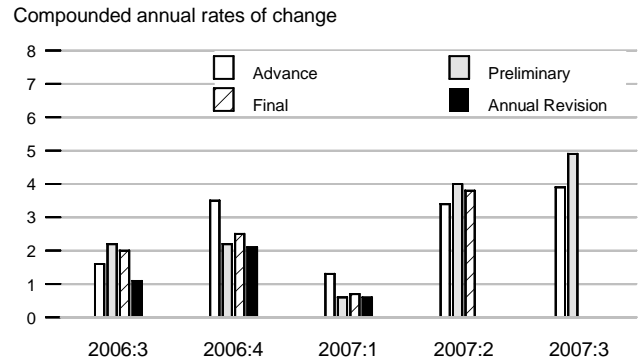
Percent of GDP



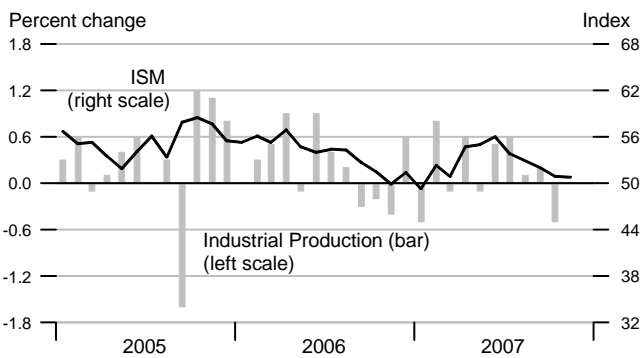
### Real Final Sales and GDP



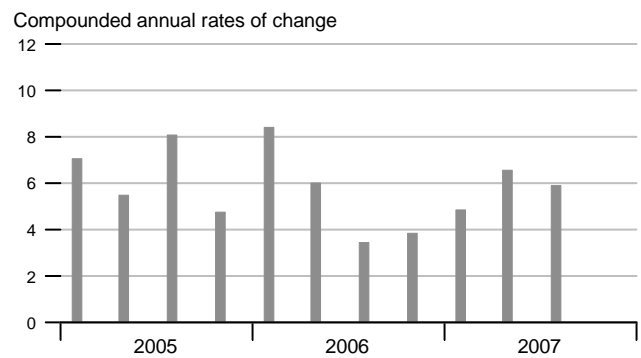
### Real GDP Revisions



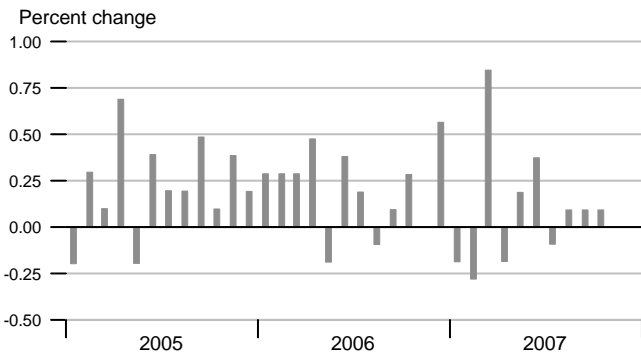
### Industrial Production and ISM Index



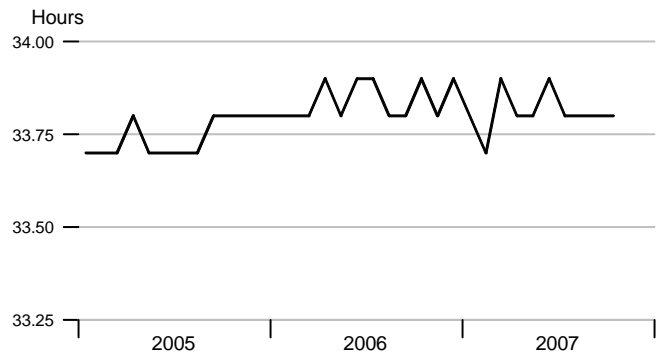
### Nominal Gross Domestic Product



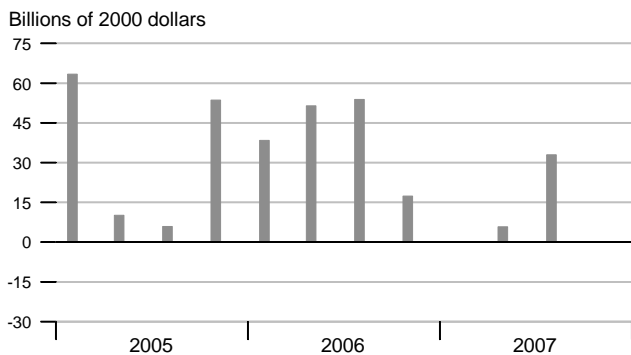
### Aggregate Private Nonfarm Hours



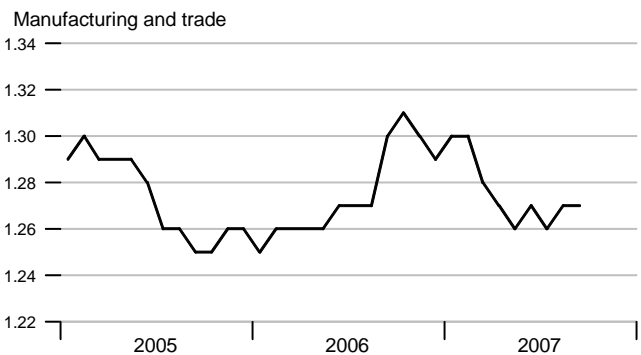
### Average Weekly Private Nonfarm Hours



### Real Change in Private Inventories

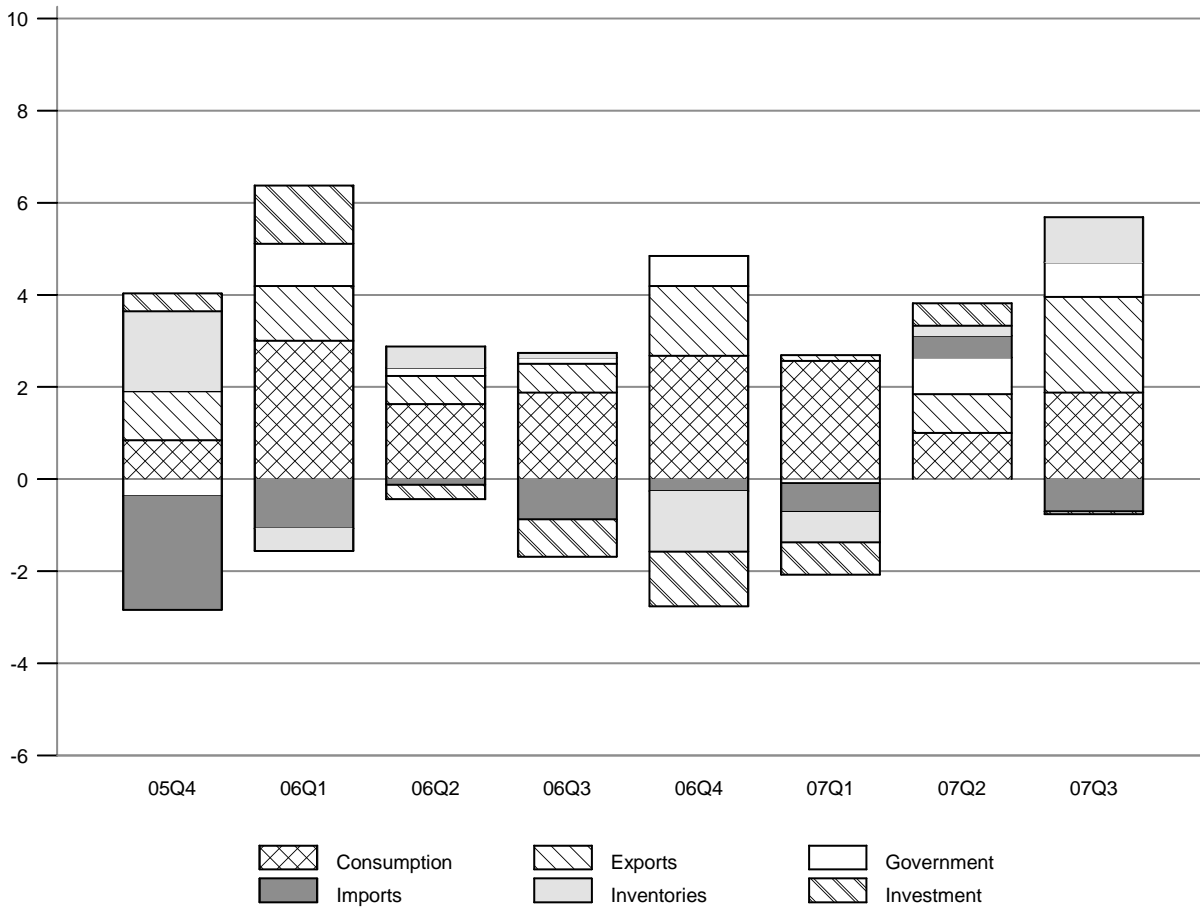


### Inventory-Sales Ratio



### Contribution of Components to Real GDP Growth

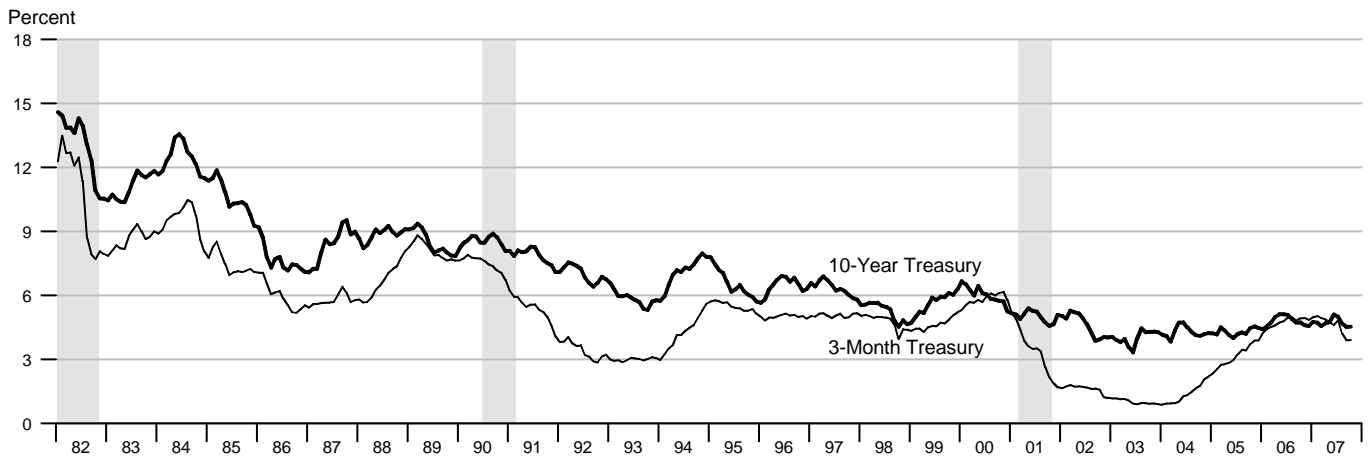
Percentage points at compounded annual rates



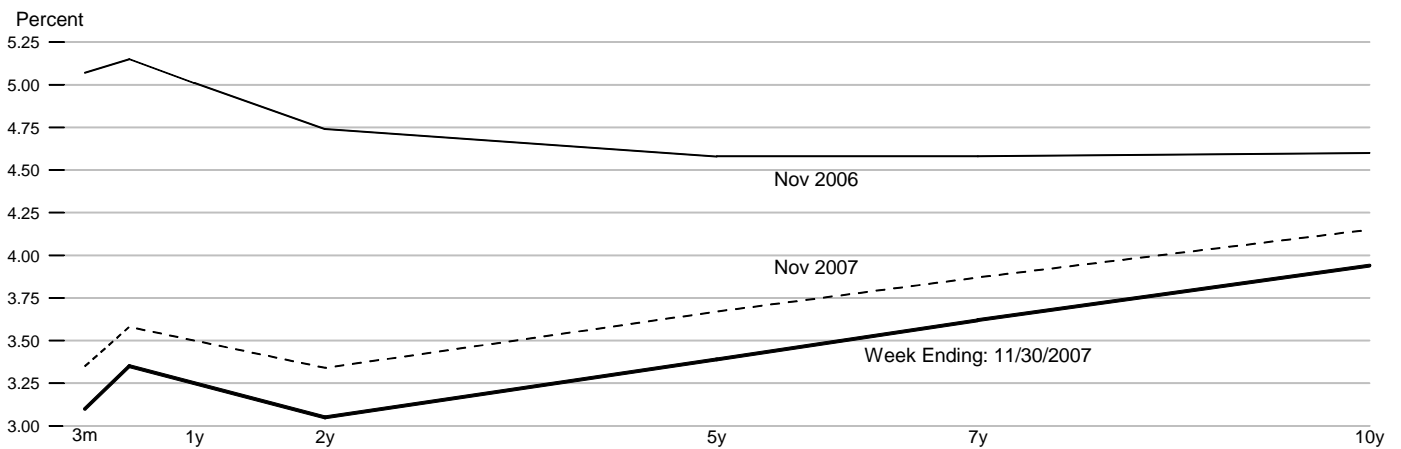
### Contributions to Real GDP Growth Rate

	2005	2006			2007			
	4th	1st	2nd	3rd	4th	1st	2nd	3rd
<b>Final Sales</b>	-0.55	5.31	1.98	0.97	3.40	1.25	3.60	3.94
<b>Consumption</b>	0.84	3.00	1.63	1.88	2.68	2.56	1.00	1.88
<b>Fixed Investment</b>	0.38	1.27	-0.32	-0.80	-1.19	-0.70	0.49	-0.06
Nonresidential	0.35	1.31	0.44	0.53	-0.15	0.22	1.12	0.97
Residential	0.03	-0.05	-0.76	-1.33	-1.04	-0.93	-0.62	-1.03
<b>Government</b>	-0.37	0.92	0.18	0.14	0.66	-0.09	0.79	0.75
Federal	-0.46	0.57	-0.11	0.06	0.50	-0.46	0.41	0.49
State and Local	0.09	0.35	0.29	0.08	0.16	0.36	0.37	0.26
<b>Net Exports</b>	-1.41	0.13	0.49	-0.25	1.25	-0.51	1.32	1.37
Exports	1.07	1.19	0.61	0.62	1.51	0.13	0.85	2.08
Imports	-2.47	-1.07	-0.12	-0.88	-0.26	-0.63	0.47	-0.70
<b>Change in Inventory</b>	1.74	-0.49	0.46	0.10	-1.31	-0.65	0.22	0.98
<b>Residual</b>	-0.08	-0.11	-0.19	-0.26	-0.19	-0.22	-0.15	-0.23
<b>Real GDP Growth</b>	1.19	4.82	2.44	1.07	2.09	0.60	3.82	4.92

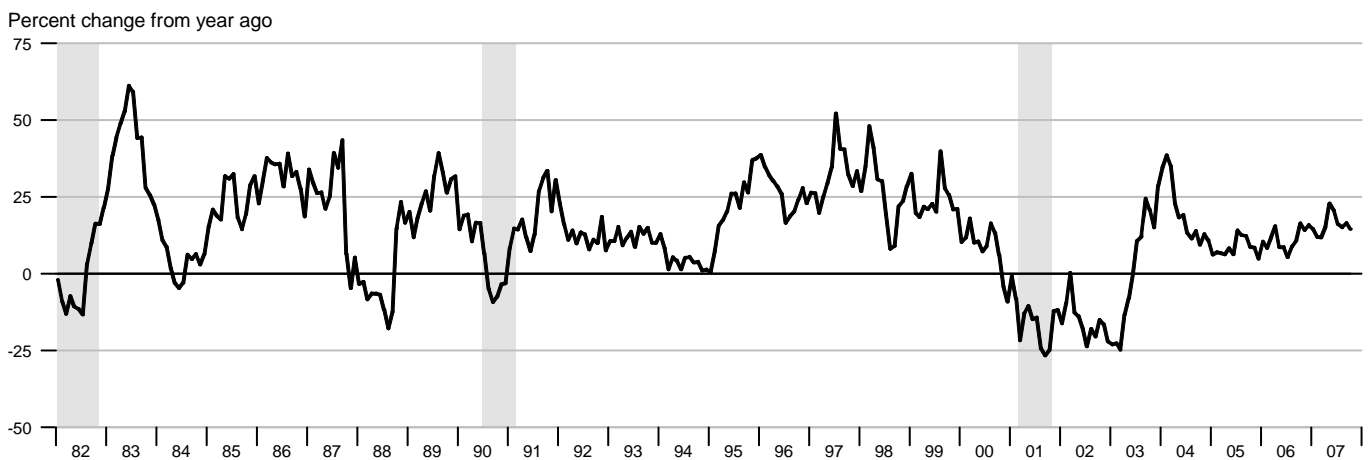
### Interest Rates



### Treasury Yield Curve

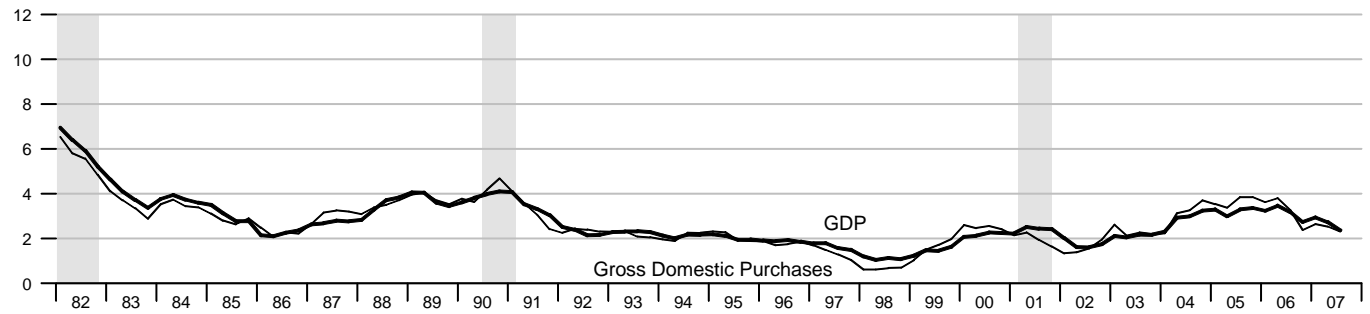


### Standard and Poor's 500 Index with Reinvested Dividends



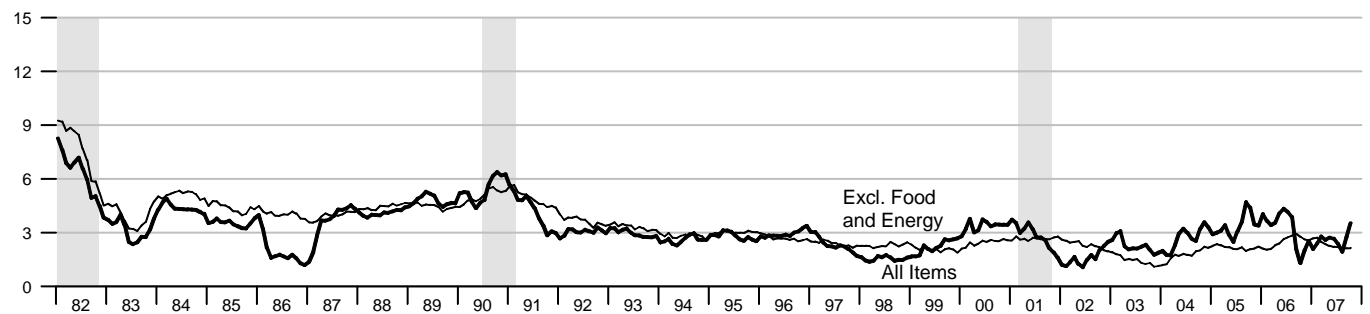
### NIPA Chain Price Indexes

Percent change from year ago



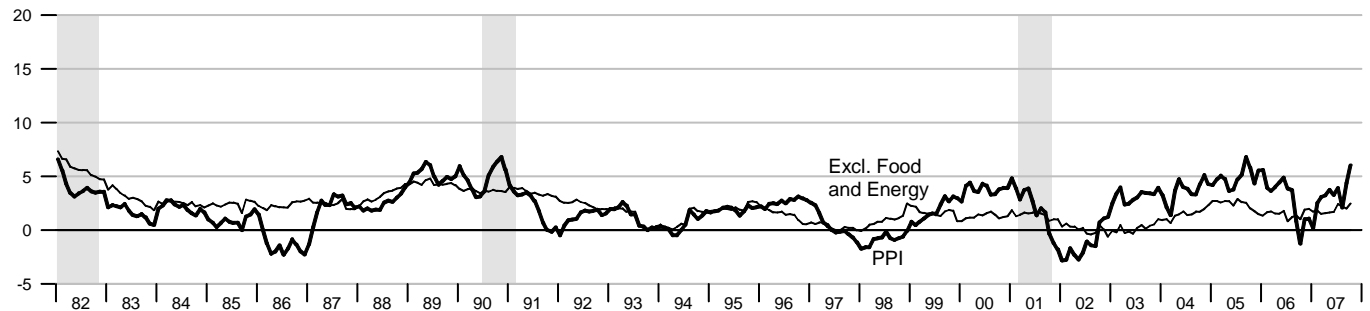
### Consumer Price Index

Percent change from year ago



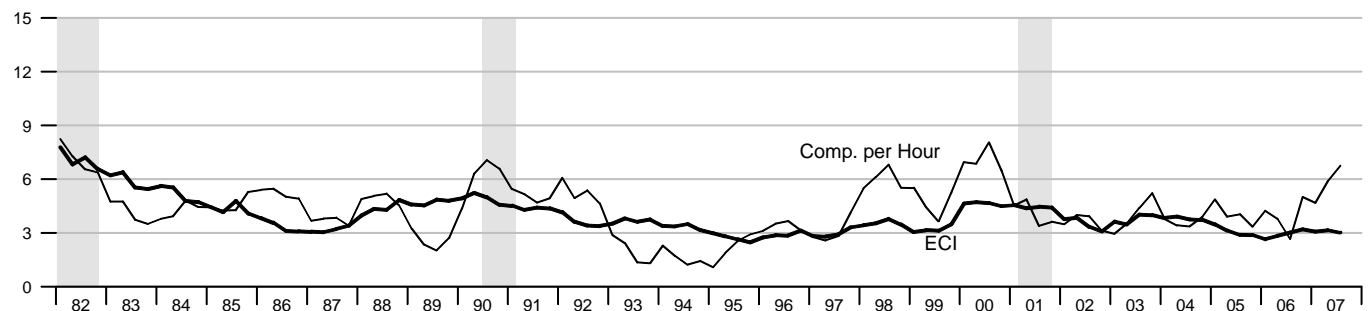
### Producer Price Index, Finished Goods

Percent change from year ago



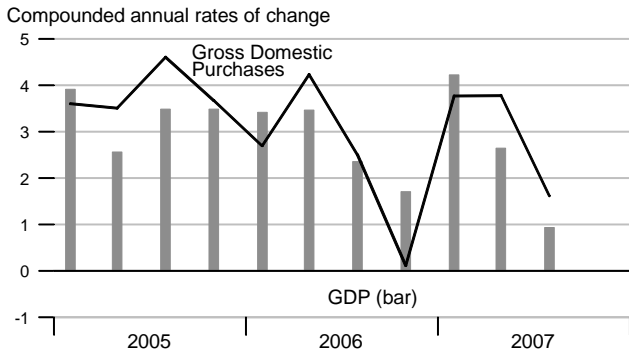
### Employment Cost Index and Compensation per Hour

Percent change from year ago

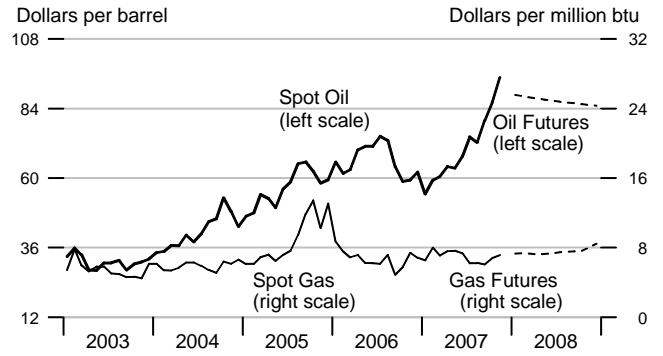




### NIPA Chain Price Indexes

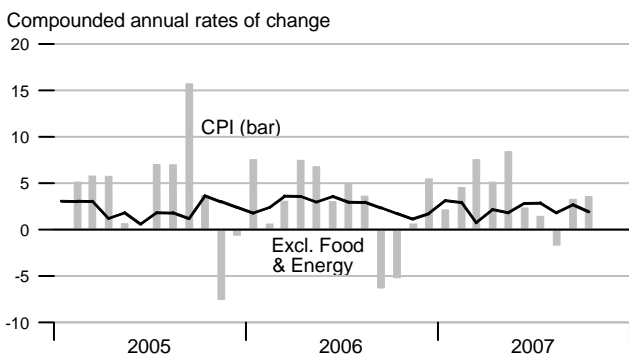


### Oil & Natural Gas Prices: Spot & Futures

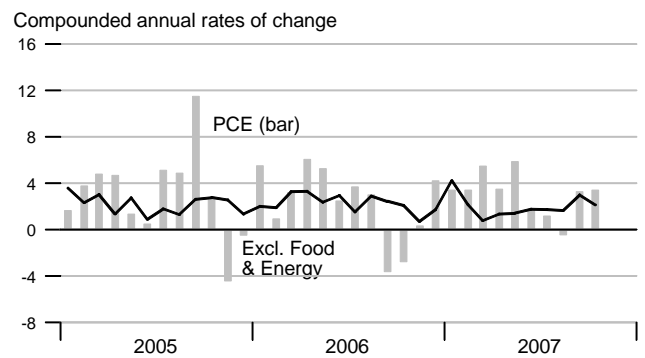


Note: Futures prices as of 11/30/2007.

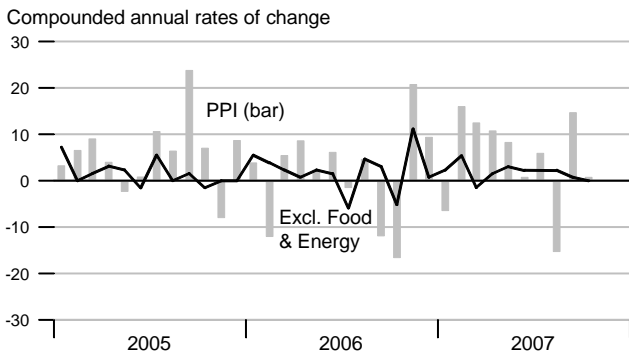
### Consumer Price Index



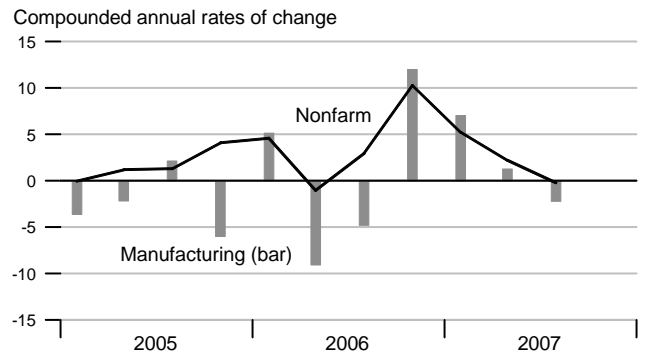
### Consumption Chain Price Index



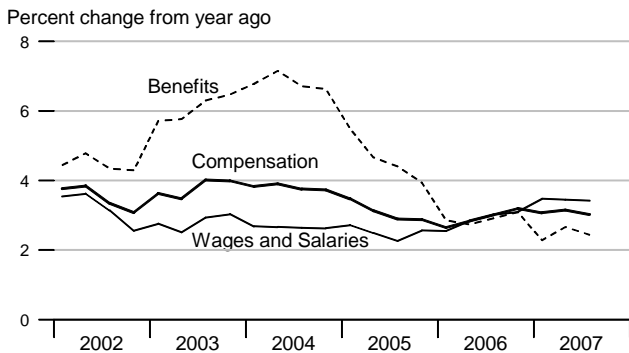
### Producer Price Index, Finished Goods



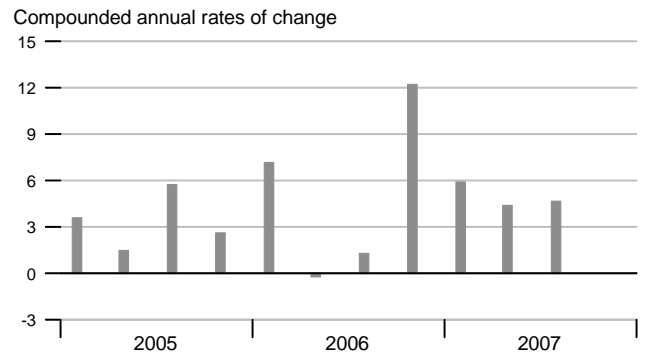
### Unit Labor Cost



### Employment Cost Index

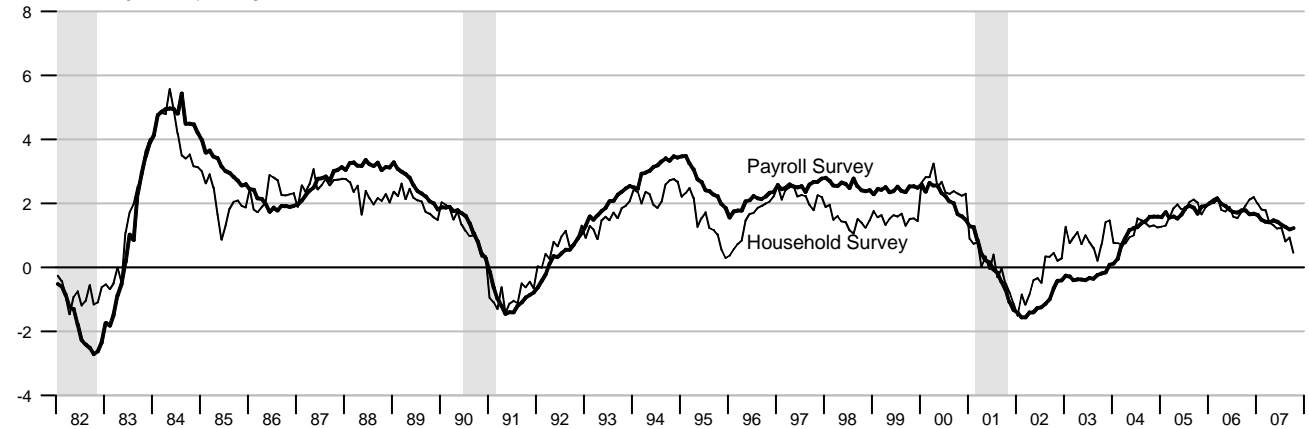


### Compensation per Hour



### Employment

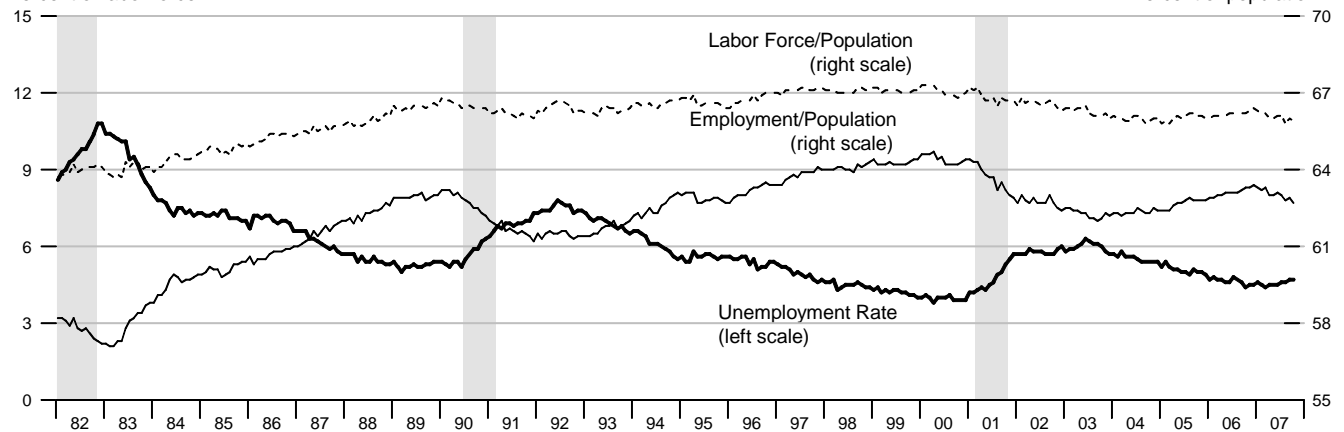
Percent change from year ago



### Unemployment, Labor Force Participation, and Employment Rates

Percent of labor force

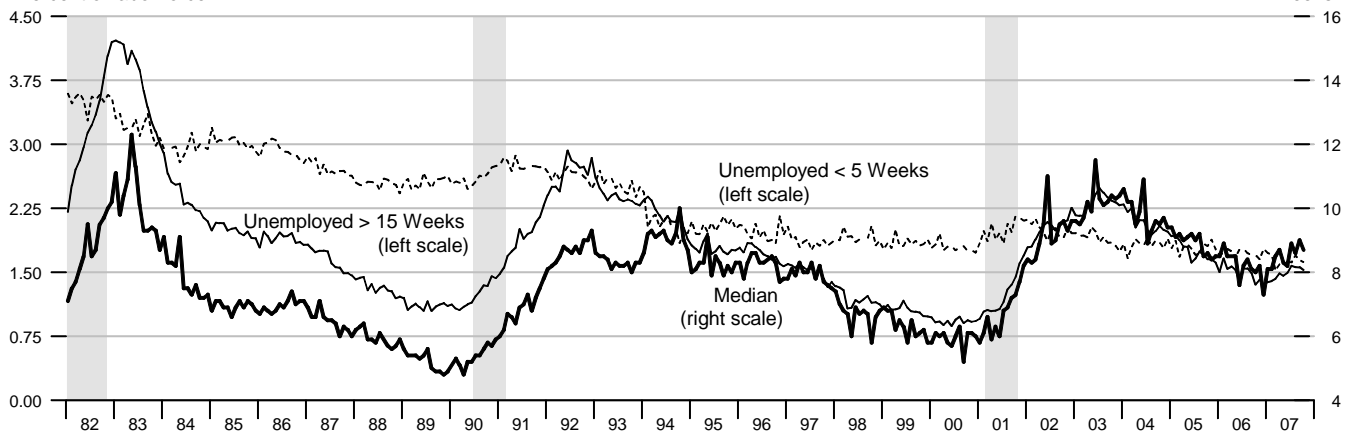
Percent of population



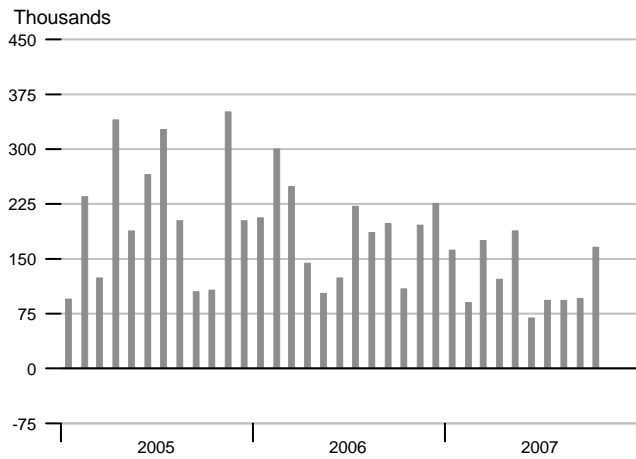
### Duration of Unemployment

Percent of labor force

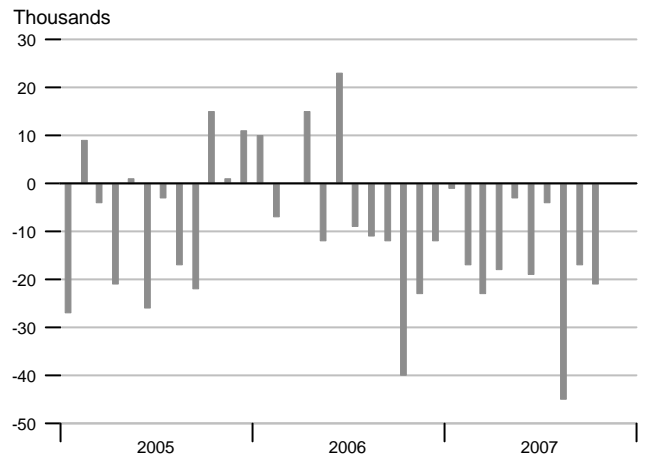
Weeks



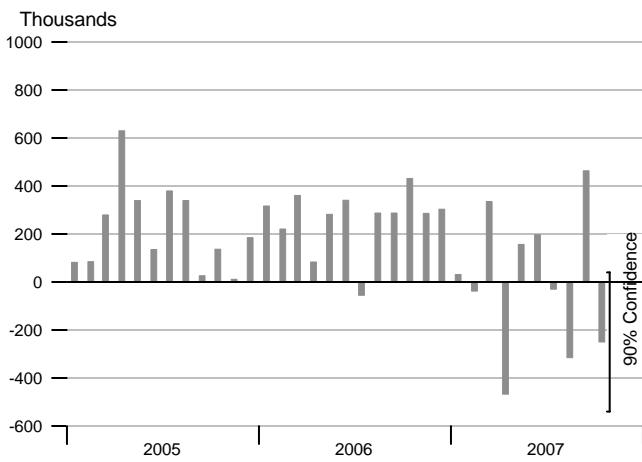
### Change in Nonfarm Payrolls



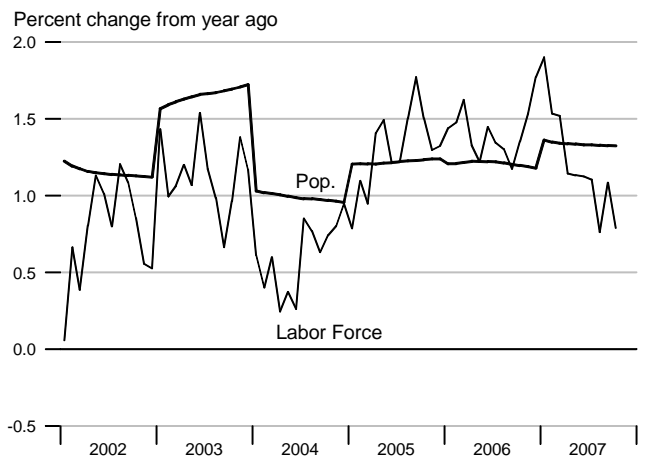
### Change in Manufacturing Payrolls



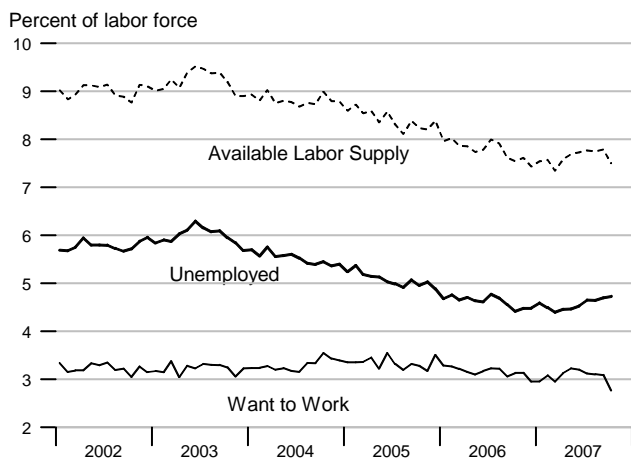
### Change in Household Employment



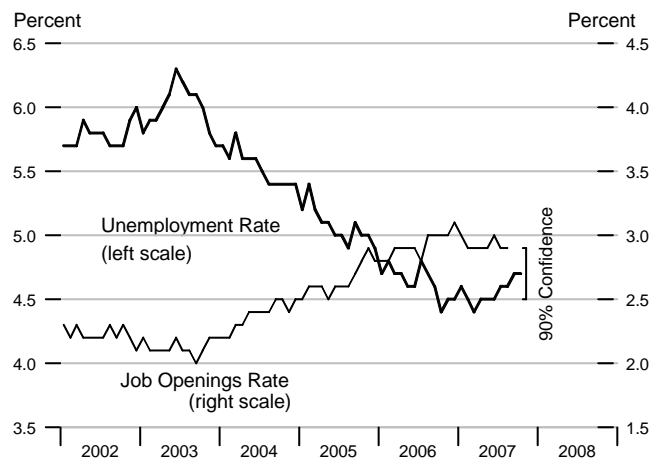
### Labor Force and Population



### Available Labor Supply and Components

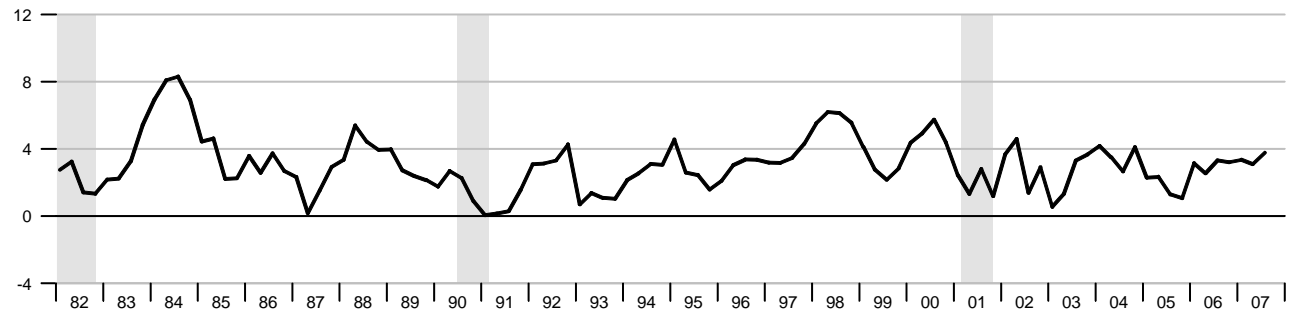


### Unemployment Rate & Job Openings Rate



### Real Disposable Personal Income

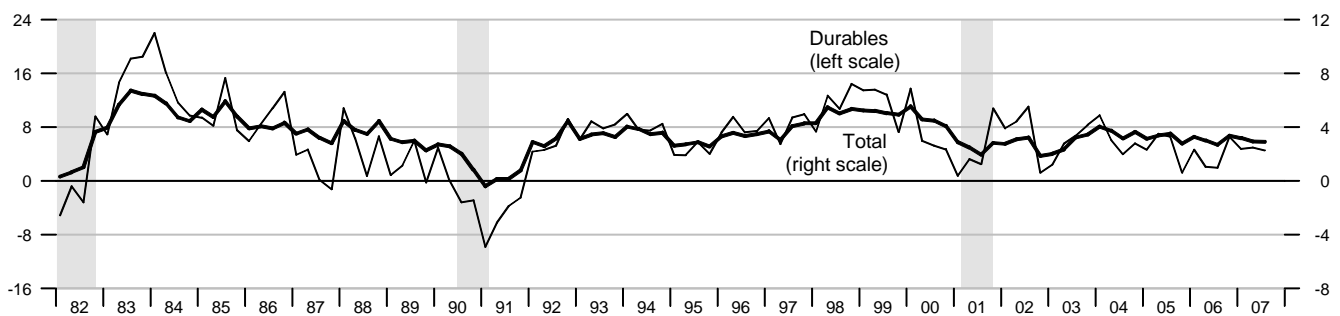
Percent change from year ago, quarterly data



### Real Consumption

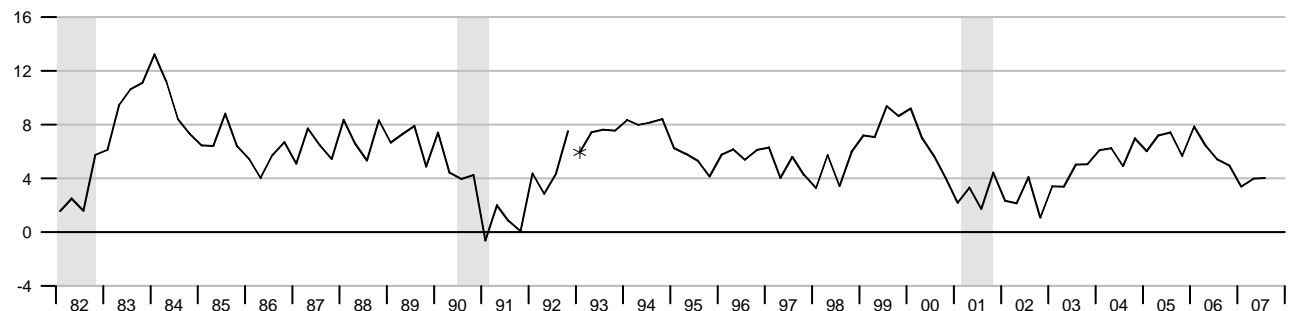
Percent change from year ago, quarterly data

Percent change from year ago, quarterly data



### Retail and Food Services Sales

Percent change from year ago, quarterly average

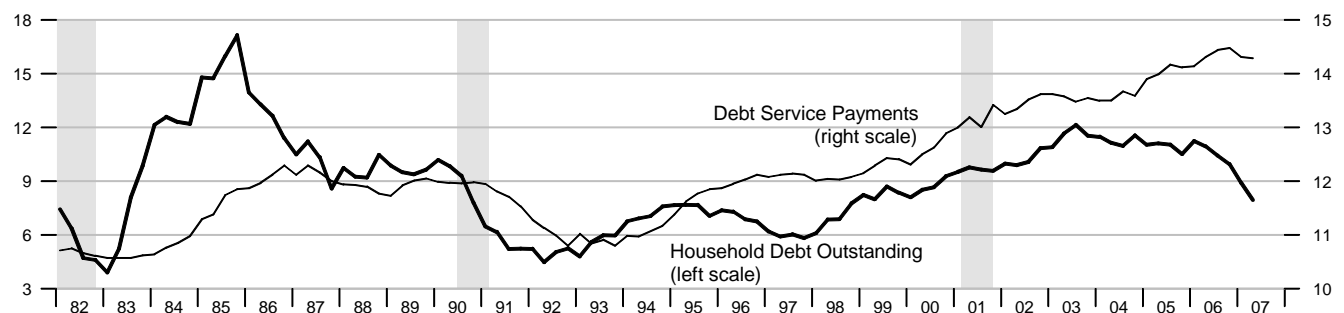


\*Data from Jan. 1992 to the present are on a NAICS basis; data prior to Jan. 1992 are on an SIC basis and are not strictly comparable (see End Note).

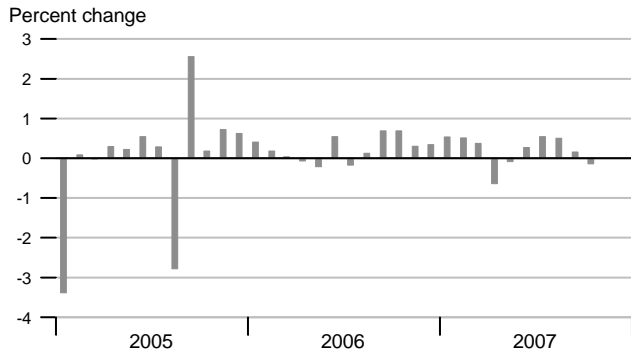
### Debt Service Payments and Household Debt Outstanding

Percent change from year ago, quarterly data

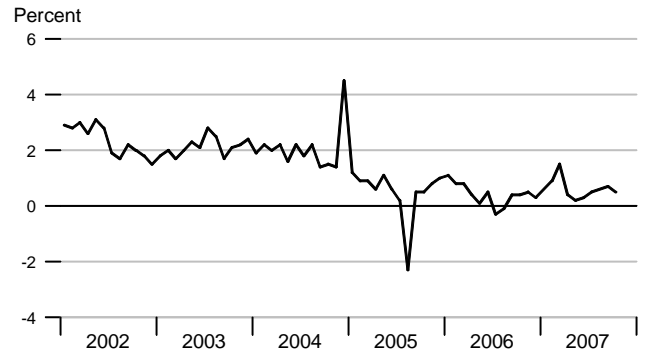
Percent of disposable personal income



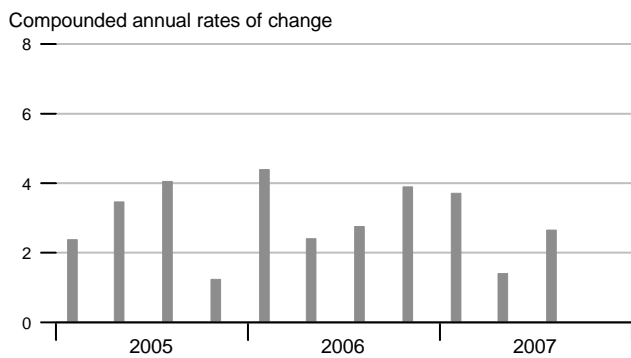
### Real Disposable Personal Income



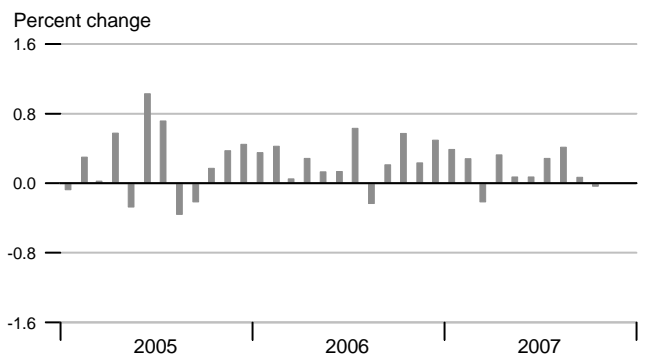
### Personal Saving Rate



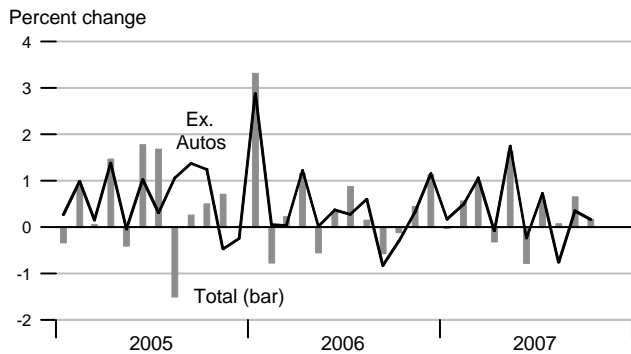
### Real Consumption



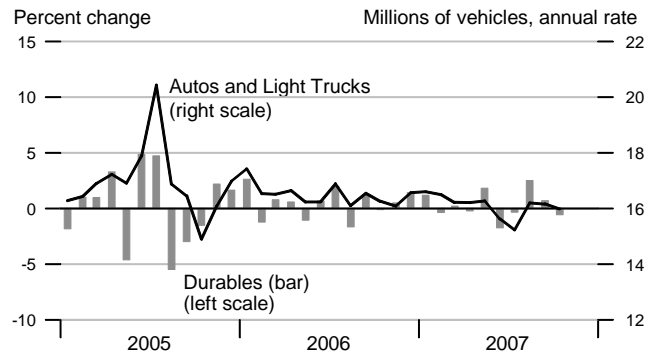
### Real Consumption



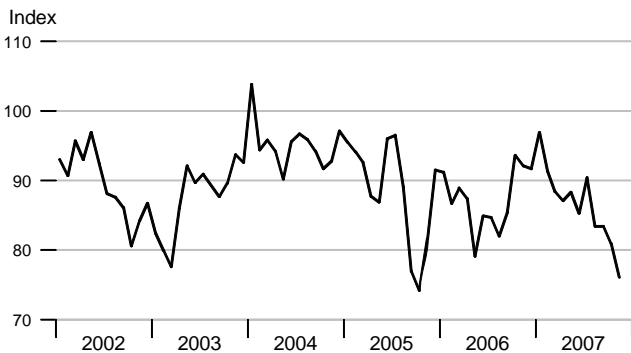
### Retail & Food Services



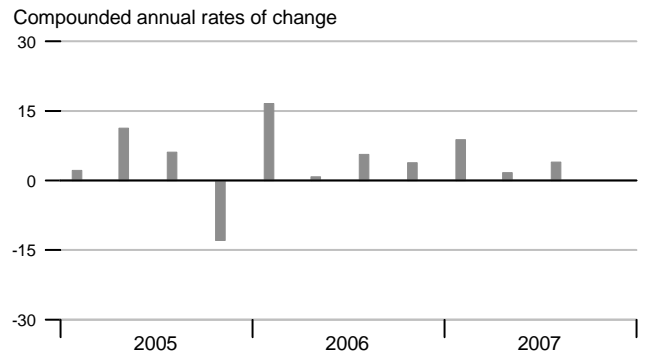
### Real Durables Consumption & Vehicle Sales



### Consumer Sentiment (U. of Michigan)

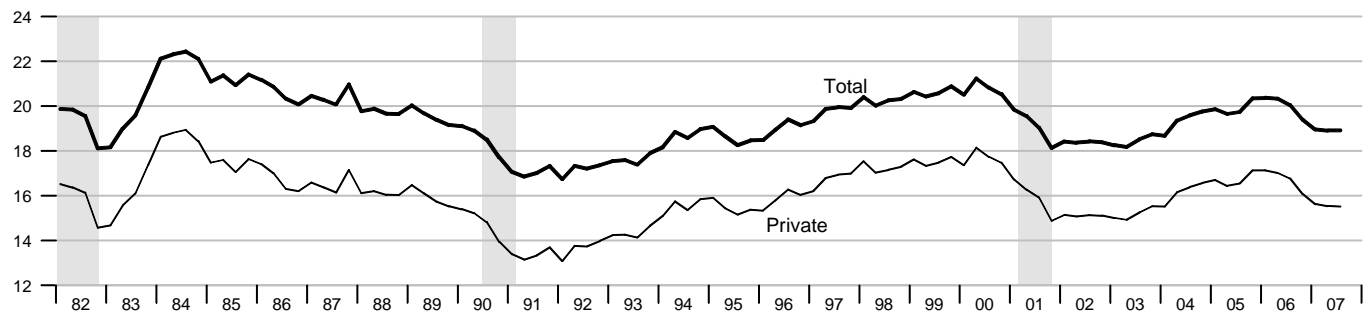


### Real Durables Consumption



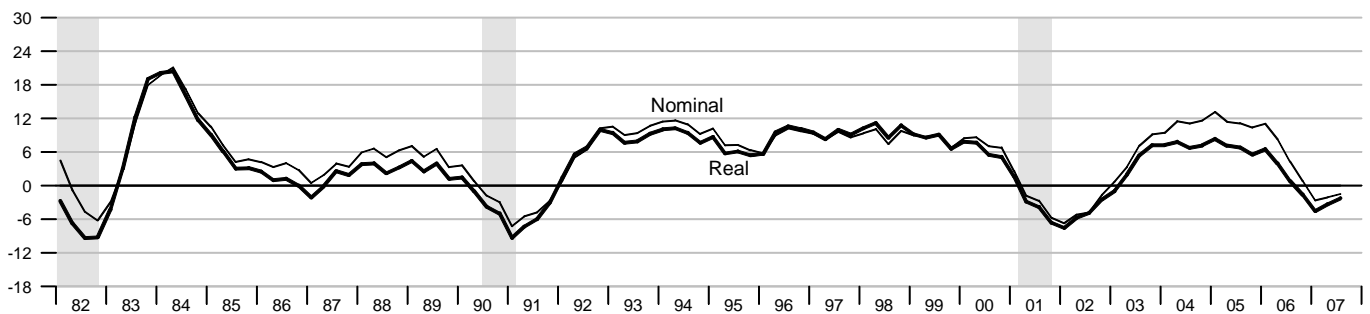
### Investment

Percent of nominal GDP



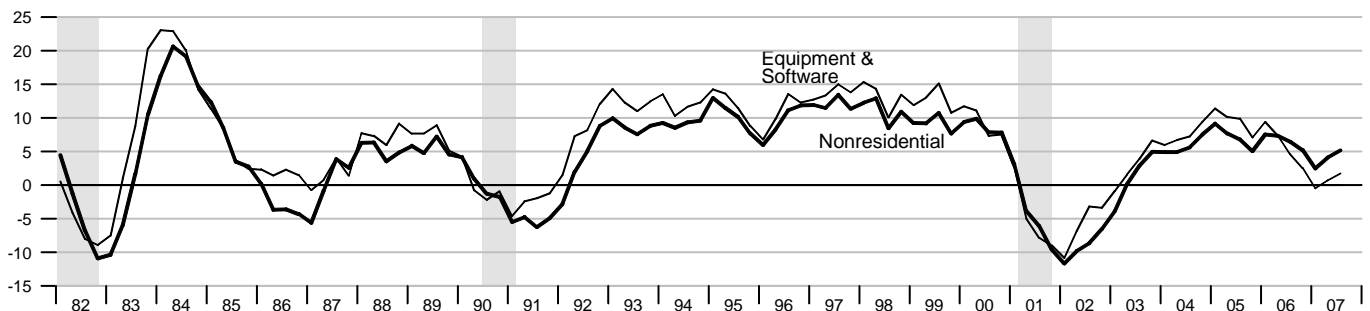
### Private Fixed Investment

Percent change from year ago



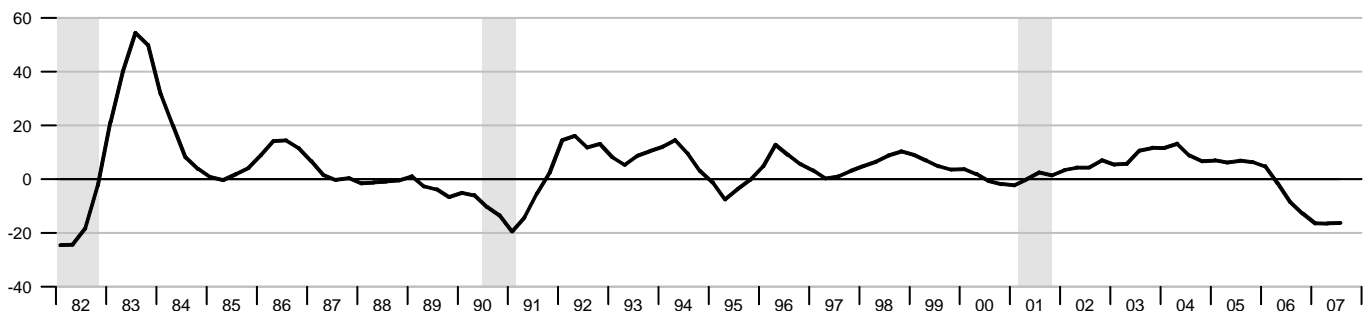
### Real Nonresidential Fixed and Equipment & Software Investment

Percent change from year ago

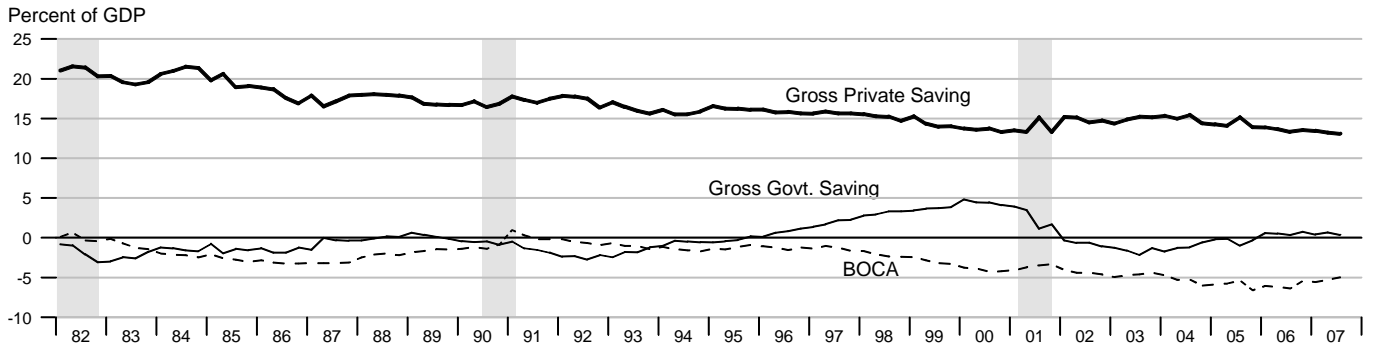


### Real Residential Fixed Investment

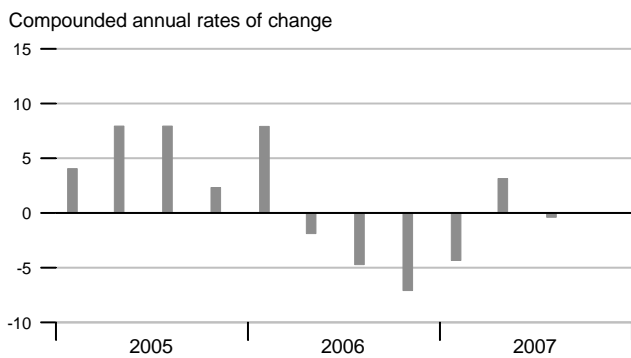
Percent change from year ago



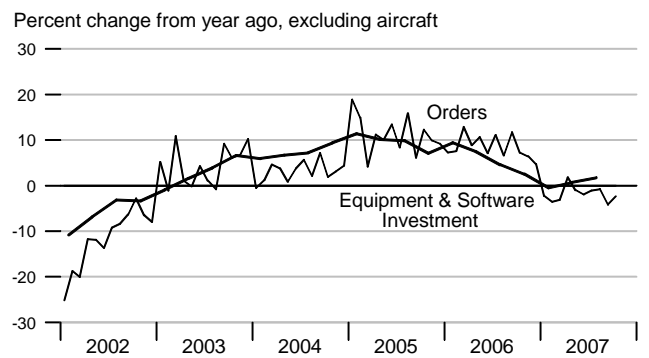
### Gross Saving Rates and Balance on Current Account (NIPA)



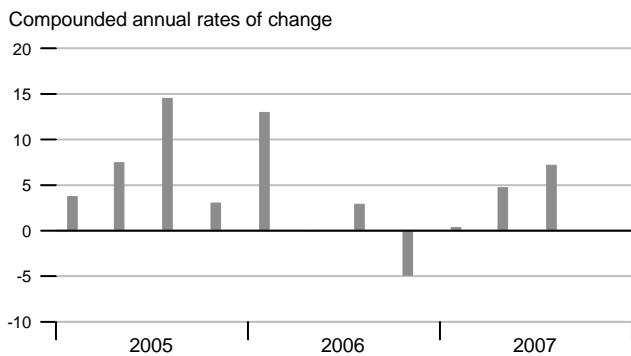
### Real Private Fixed Investment



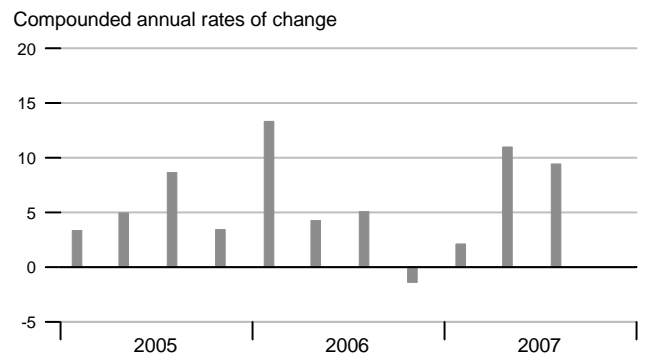
### Nondefense Capital Goods Orders



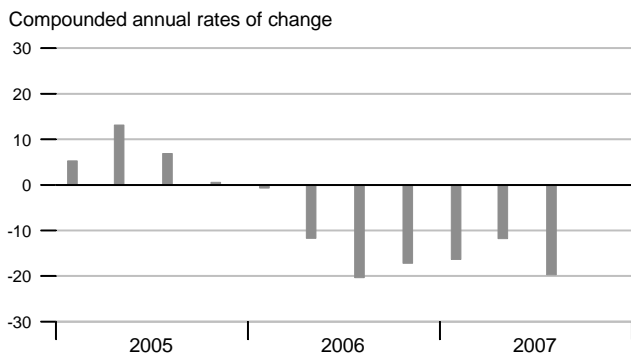
### Real Equipment & Software Investment



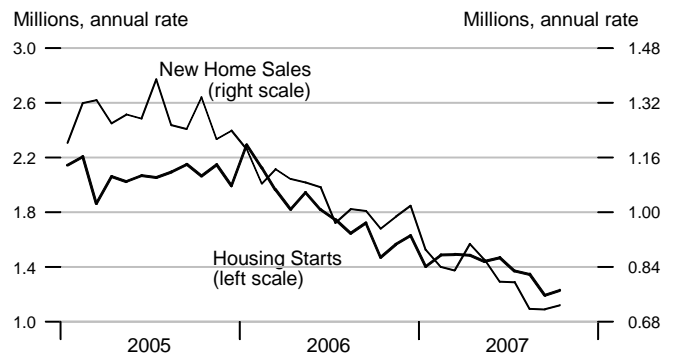
### Real Nonresidential Fixed Investment



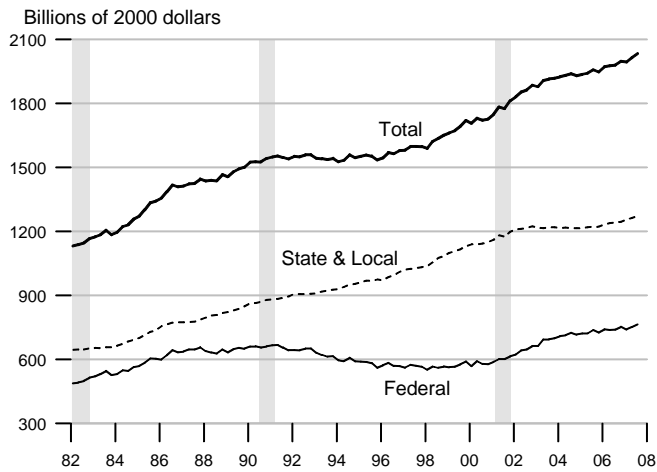
### Real Residential Fixed Investment



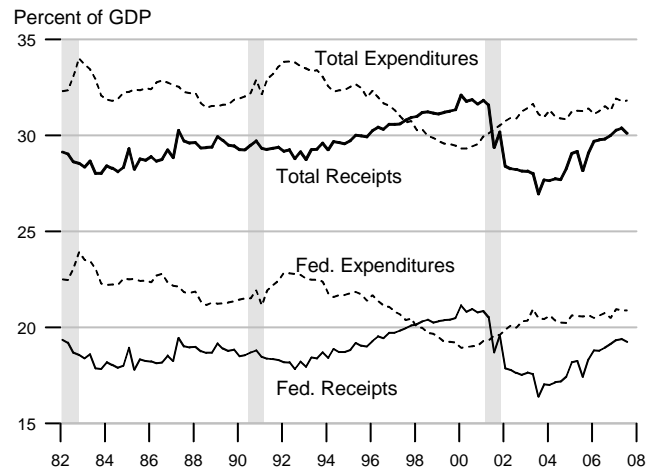
### Housing Starts and New Home Sales



**Govt. Consumption and Investment**



**Govt. Current Receipts and Expenditures**



**Government Budgets**

Billions of dollars

**National Income Accounts**

Calendar Years

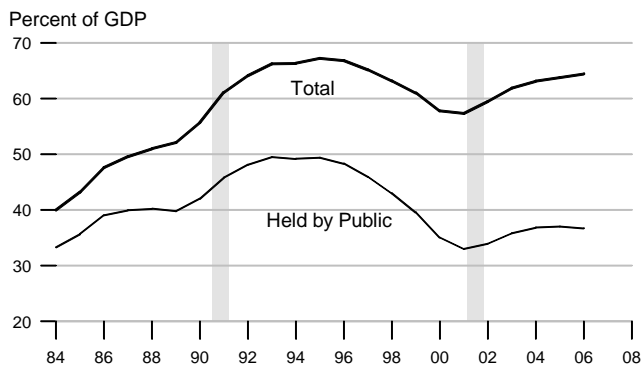
**Unified Budget**

Fiscal Years

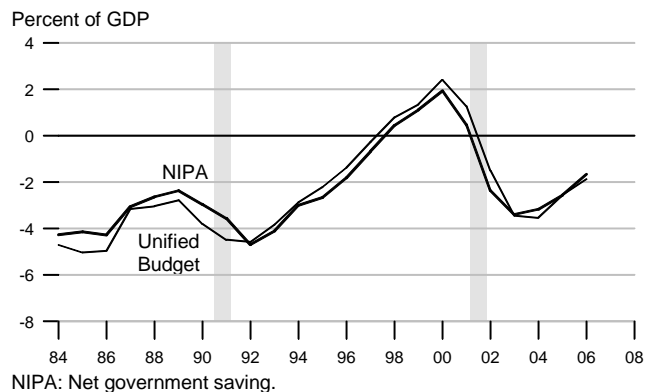
	State and Local			Federal			Federal		
	Receipts	Expenditures	Surplus or Deficit (-)	Receipts	Expenditures	Surplus or Deficit (-)	Receipts	Outlays	Surplus or Deficit (-)
1991	789.2	793.3	-4.1	1101.3	1315.0	-213.7	1055.1	1324.3	-269.2
1992	845.7	845.0	0.7	1147.2	1444.6	-297.4	1091.3	1381.6	-290.3
1993	886.9	886.0	0.9	1222.5	1496.0	-273.5	1154.5	1409.5	-255.1
1994	942.9	932.4	10.5	1320.8	1533.1	-212.3	1258.7	1461.9	-203.2
1995	990.2	978.2	12.0	1406.5	1603.5	-197.0	1351.9	1515.9	-164.0
1996	1043.3	1017.5	25.8	1524.0	1665.8	-141.8	1453.2	1560.6	-107.4
1997	1097.4	1058.3	39.1	1653.1	1708.9	-55.8	1579.4	1601.3	-21.9
1998	1163.2	1111.2	52.0	1773.8	1734.9	38.9	1722.0	1652.7	69.3
1999	1236.7	1186.3	50.4	1891.2	1787.6	103.6	1827.6	1702.0	125.6
2000	1319.5	1269.5	50.0	2053.8	1864.4	189.4	2025.5	1789.2	236.2
2001	1373.0	1368.2	4.8	2016.2	1969.5	46.7	1991.4	1863.2	128.2
2002	1410.1	1444.3	-34.2	1853.2	2101.1	-247.9	1853.4	2011.2	-157.8
2003	1494.2	1514.5	-20.3	1879.9	2252.1	-372.2	1782.5	2160.1	-377.6
2004	1594.3	1592.8	1.5	2008.9	2379.5	-370.6	1880.3	2293.0	-412.7
2005	1706.9	1691.7	15.2	2243.4	2561.6	-318.2	2153.9	2472.2	-318.3
2006	1797.7	1773.0	24.7	2495.8	2715.8	-220.0	2407.3	2655.0	-247.7
2005Q4	1731.8	1734.3	-2.5	2328.3	2621.4	-293.1	530.2	649.6	-119.4
2006Q1	1767.8	1732.1	35.7	2436.5	2656.2	-219.7	507.4	691.0	-183.6
2006Q2	1803.7	1760.9	42.8	2471.5	2711.4	-239.9	772.1	675.7	96.5
2006Q3	1806.7	1794.4	12.3	2513.1	2752.3	-239.2	596.9	638.7	-41.7
2006Q4	1812.4	1804.8	7.6	2561.9	2743.4	-181.5	573.5	653.9	-80.4
2007Q1	1856.6	1862.4	-5.8	2619.7	2838.2	-218.5	547.4	725.4	-178.0
2007Q2	1889.9	1876.5	13.4	2670.1	2876.9	-206.8	824.4	686.9	137.5
2007Q3	1898.0	1905.6	-7.6	2687.9	2917.0	-229.1	622.3	664.2	-41.9



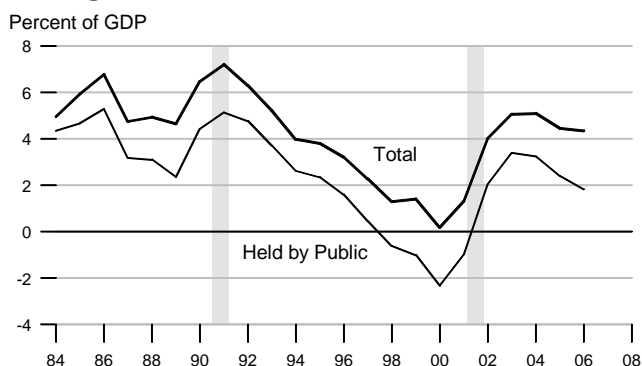
### Federal Debt



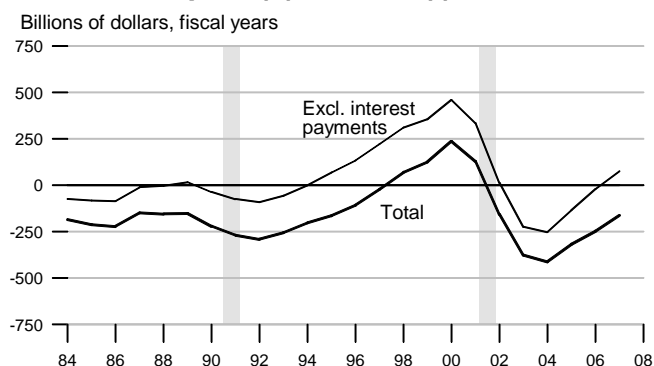
### Federal Surplus (+) / Deficit (-)



### Change in Federal Debt



### Federal Surplus (+) / Deficit (-), Unified Basis

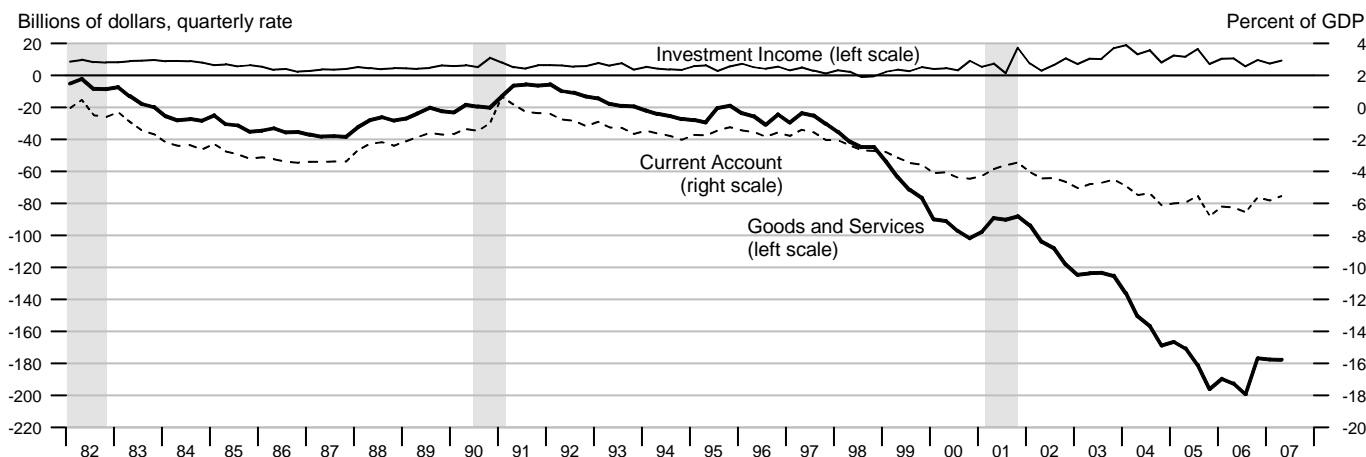


### Federal Government Debt

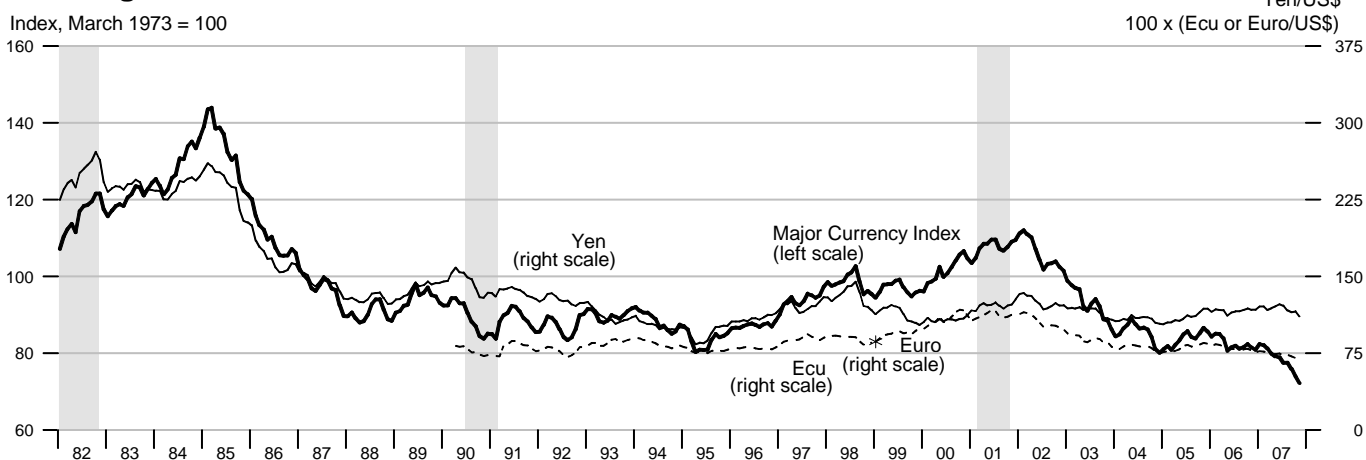
Billions of dollars, end of month or fiscal year  
Excludes Agency-issued debt

		Total Public Debt	Held by Agencies and Trusts	Held by Public		Held by Private Investors	
				Total	Federal Reserve Banks	Total	Foreign and International
2005		7932.7	3331.1	4601.6	736.4	3864.9	1930.6
2006		8507.0	3663.8	4843.2	768.9	4074.2	2027.3
2007		9007.7	3958.4	5049.2	779.6	4269.7	2248.9
2004	March	7131.1	2954.4	4176.7	674.1	3502.8	1677.1
	June	7274.3	3055.6	4218.7	687.4	3531.5	1739.6
	September	7379.1	3075.7	4303.4	700.3	3607.0	1798.7
	December	7596.1	3189.8	4406.4	717.8	3690.6	1853.4
2005	March	7776.9	3204.5	4572.4	717.3	3855.4	1956.3
	June	7836.5	3308.9	4527.6	724.7	3803.0	1879.6
	September	7932.7	3331.1	4601.6	736.4	3864.9	1930.6
	December	8170.4	3455.8	4714.6	744.2	3970.6	2036.0
2006	March	8371.2	3498.4	4872.8	758.5	4114.0	2084.5
	June	8420.0	3622.6	4797.5	766.4	4030.8	1979.8
	September	8507.0	3663.8	4843.2	768.9	4074.2	2027.3
	December	8680.2	3779.0	4901.2	778.9	4122.1	2116.7
2007	March	8849.7	3795.4	5054.3	780.9	4273.1	2208.4
	June	8867.7	3924.6	4943.0	790.5	4152.6	2205.4
	September	9007.7	3958.4	5049.2	779.6	4269.7	2248.9

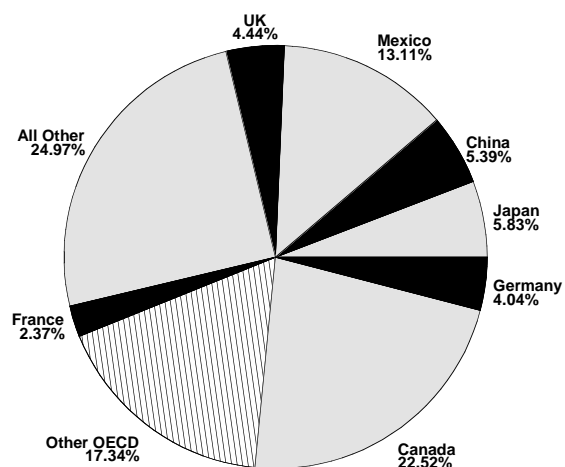
### Current Account, Trade and Investment Income Balances



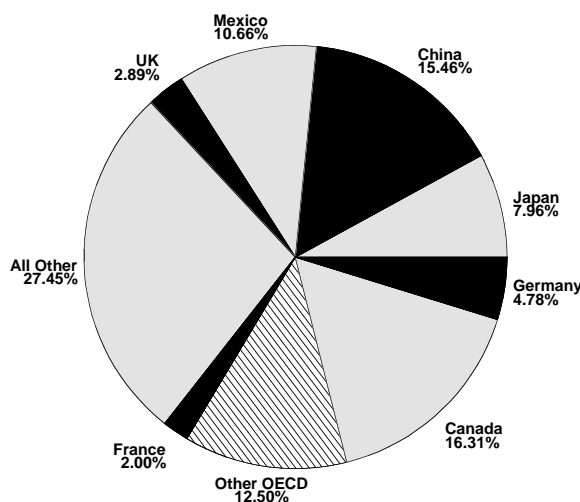
### Exchange Rates



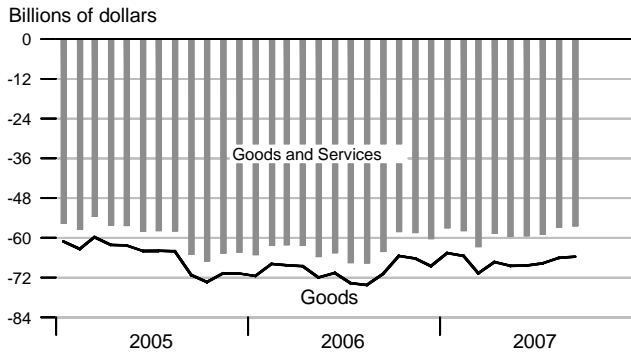
### Goods Export Shares, 2006



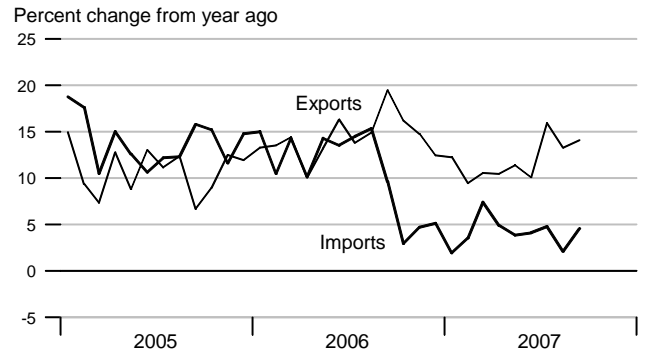
### Goods Import Shares, 2006



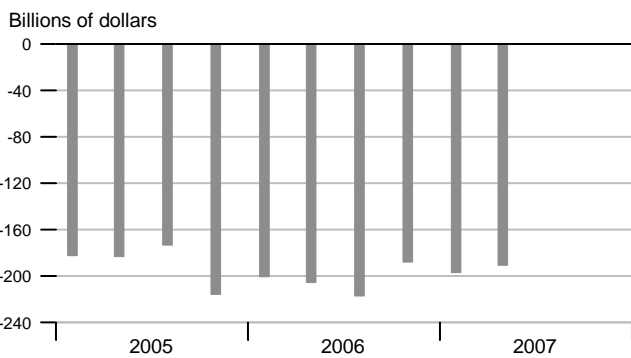
### Trade Balance



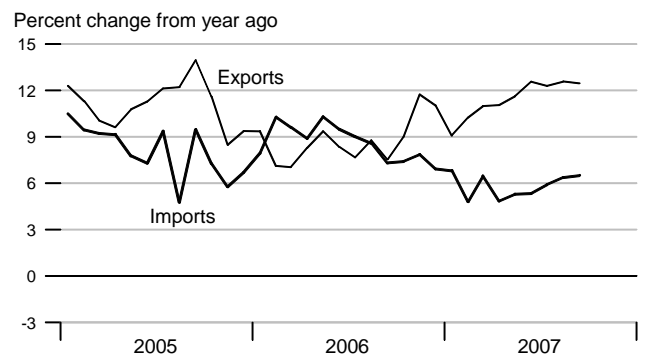
### Goods Trade



### Current Account Balance



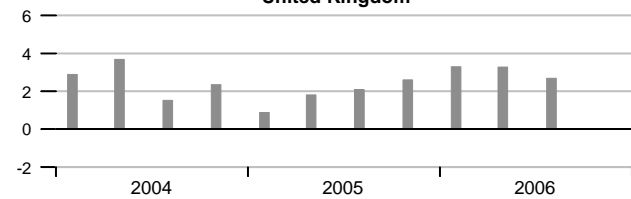
### Services Trade



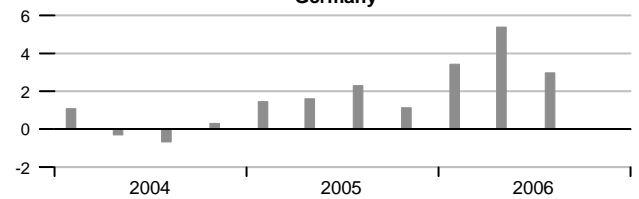
### Real GDP Growth of Major Trading Partners

Compounded annual rates of change

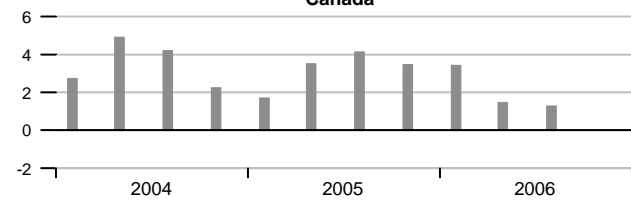
#### United Kingdom



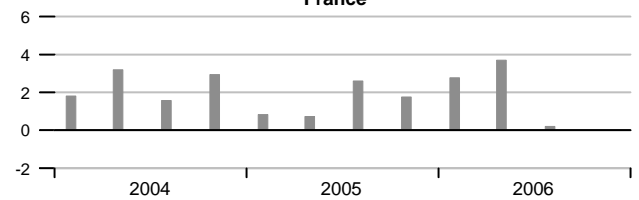
#### Germany



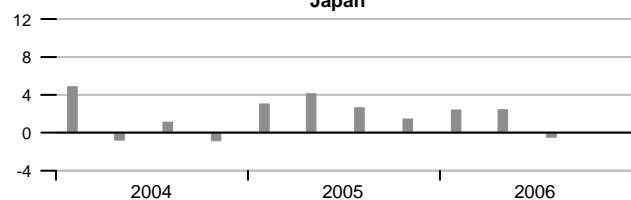
#### Canada



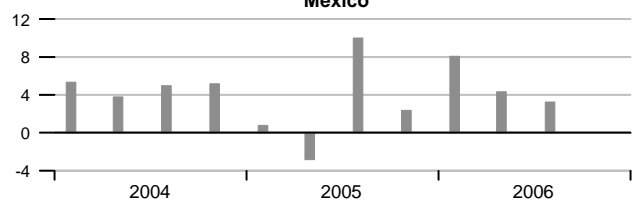
#### France



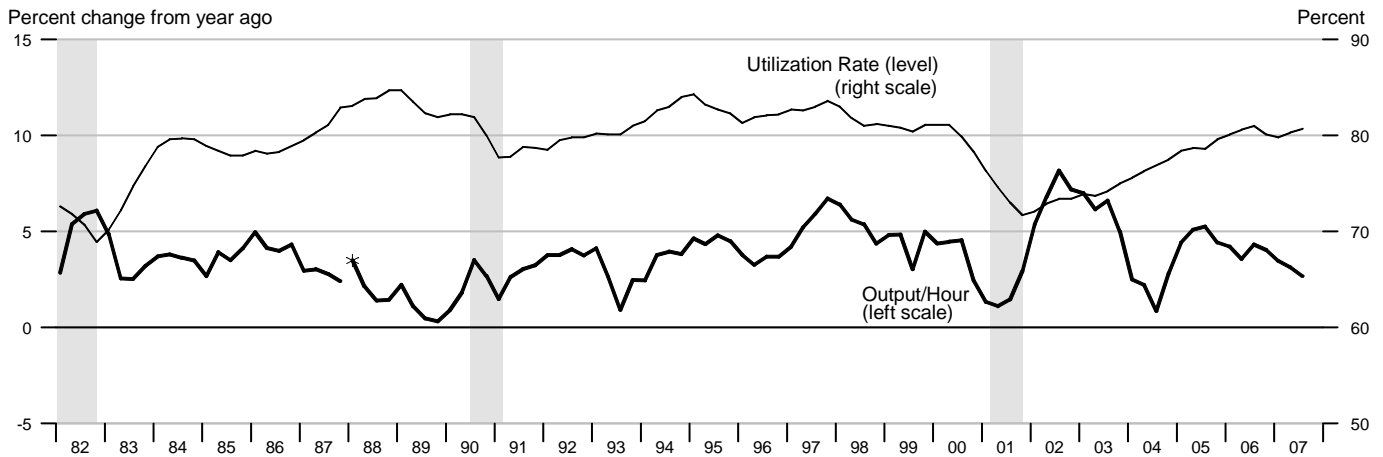
#### Japan



#### Mexico

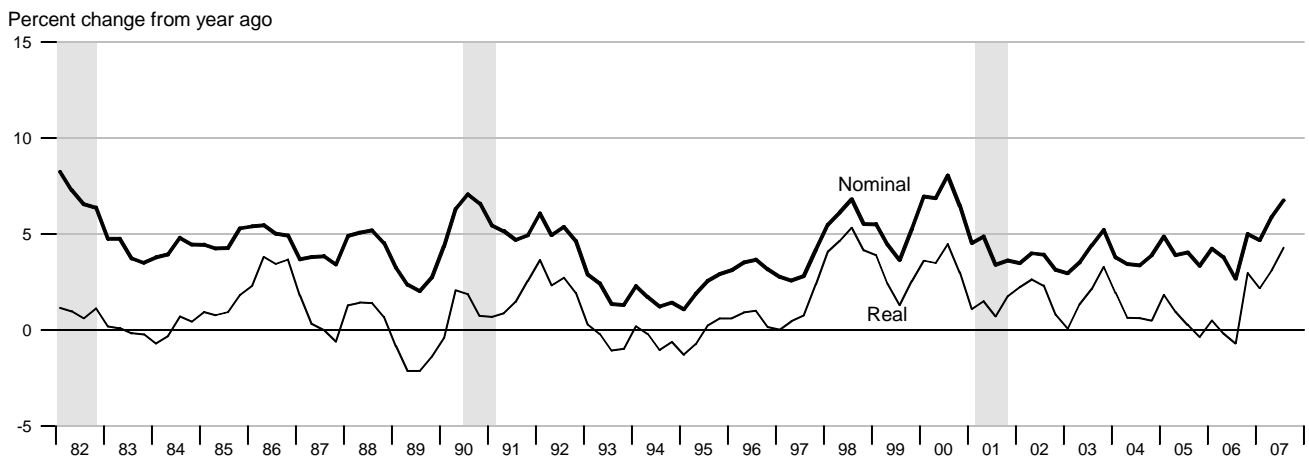


### Output per Hour and Capacity Utilization, Manufacturing

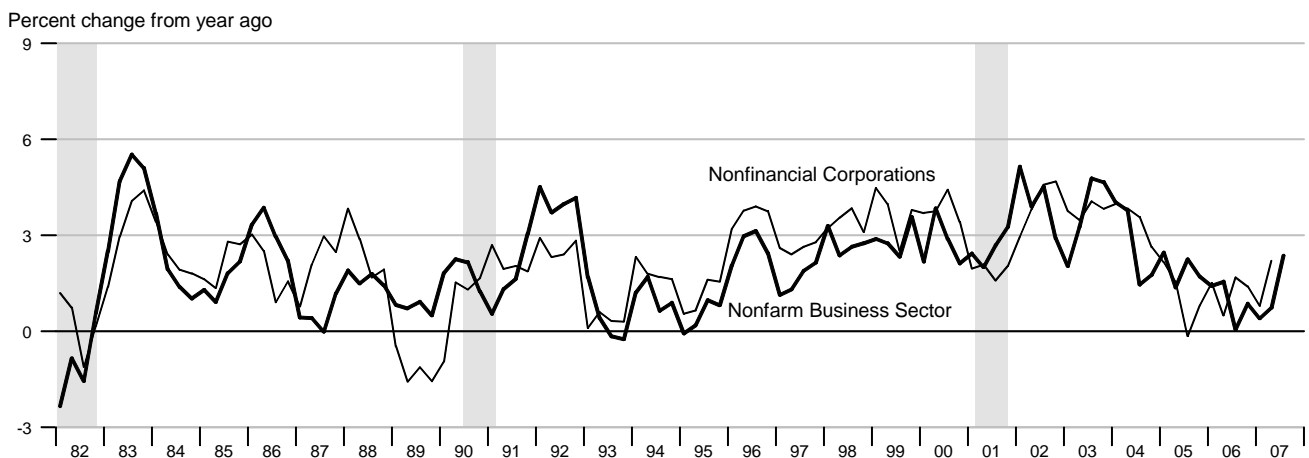


\*Data from 1987 to the present are on a NAICS basis; data prior to 1987 are on an SIC basis and are not strictly comparable (see End Note).

### Nonfarm Compensation per Hour

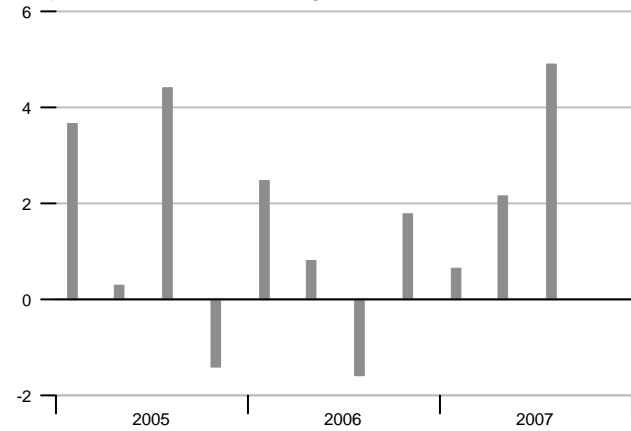


### Output per Hour, Nonfarm Business and Nonfinancial Corporations



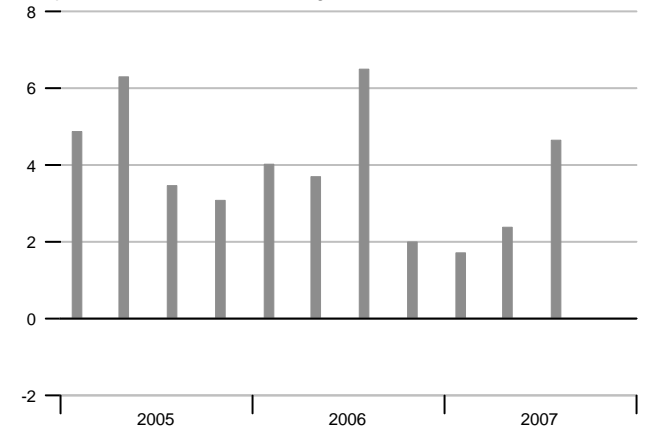
### Nonfarm Output per Hour

Compounded annual rates of change

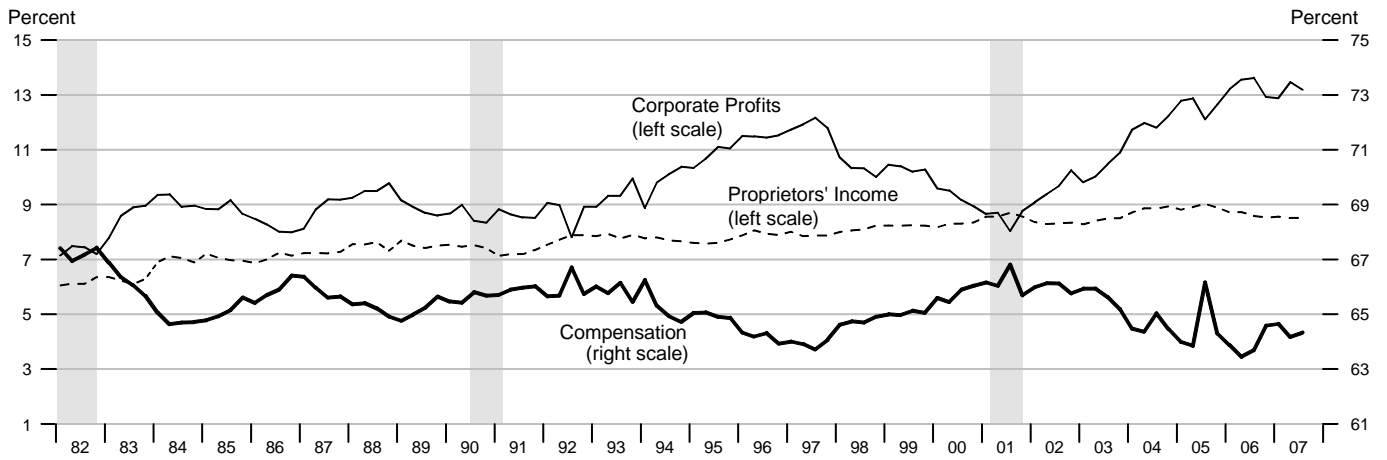


### Manufacturing Output per Hour

Compounded annual rates of change

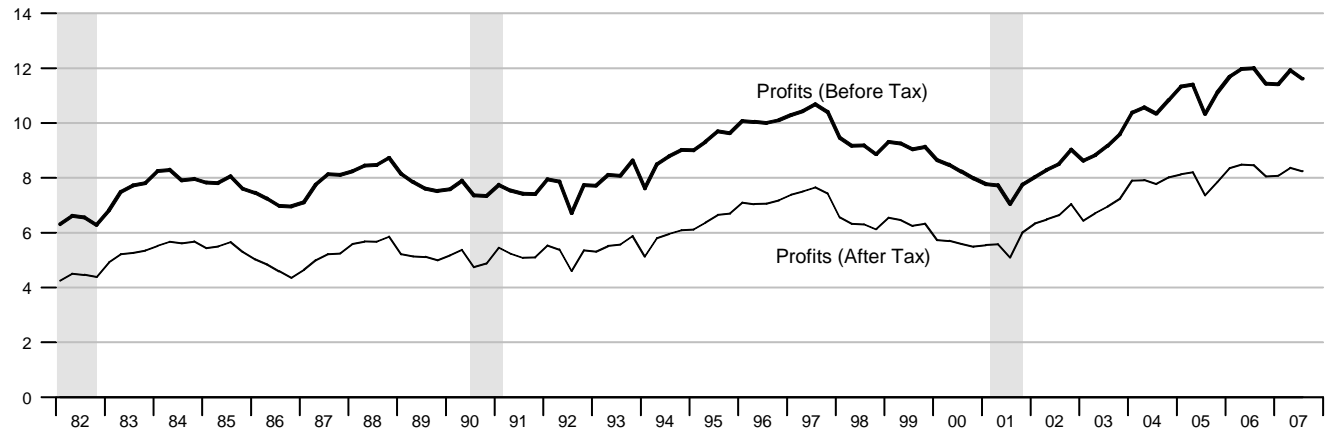


### Selected Component Shares of National Income



### Corporate Profits

Percent of GDP



	Nominal GDP			Real GDP			Final Sales			Change in Private Inventories			
	Billions of \$	Percent change		Billions of 2000 \$	Percent change		Billions of 2000 \$	Percent change		Billions of 2000 \$			
		Annual rate	Year ago		Annual rate	Year ago		Annual rate	Year ago	Last qtr	Year/Year ago		
2003	10960.8		4.7	10301.044		2.5	10285.104		2.5		14.282		
2004	11685.9		6.6	10675.757		3.6	10619.790		3.3		54.268		
2005	12433.9		6.4	11003.448		3.1	10966.873		3.3		33.237		
2006	13194.7		6.1	11319.358		2.9	11275.890		2.8		40.289		
2004	1	11405.5	6.8	6.5	10543.621	3.0	4.1	10507.057	2.6	4.0	34.953	16.950	
	2	11610.3	7.4	7.2	10634.232	3.5	4.1	10568.450	2.4	3.5	64.882	33.834	
	3	11779.4	6.0	6.3	10728.671	3.6	3.2	10666.641	3.8	2.7	60.057	46.215	
	4	11948.5	5.9	6.5	10796.408	2.5	3.1	10737.014	2.7	2.8	57.180	54.268	
2005	1	12154.0	7.1	6.6	10878.380	3.1	3.2	10812.950	2.9	2.9	63.393	61.378	
	2	12317.4	5.5	6.1	10954.069	2.8	3.0	10940.422	4.8	3.5	10.070	47.675	
	3	12558.8	8.1	6.6	11074.326	4.5	3.2	11064.771	4.6	3.7	5.906	34.137	
	4	12705.5	4.8	6.3	11107.213	1.2	2.9	11049.544	-0.5	2.9	53.580	33.237	
2006	1	12964.6	8.4	6.7	11238.662	4.8	3.3	11196.147	5.4	3.5	38.422	26.995	
	2	13155.0	6.0	6.8	11306.694	2.4	3.2	11252.074	2.0	2.8	51.390	37.325	
	3	13266.9	3.4	5.6	11336.734	1.1	2.4	11279.696	1.0	1.9	53.944	49.334	
	4	13392.3	3.8	5.4	11395.538	2.1	2.6	11375.837	3.5	3.0	17.401	40.289	
2007	1	13551.9	4.9	4.5	11412.619	0.6	1.5	11411.560	1.3	1.9	0.097	30.708	
	2	13768.8	6.6	4.7	11520.115	3.8	1.9	11512.777	3.6	2.3	5.762	19.301	
	3	13967.3	5.9	5.3	11659.320	4.9	2.8	11624.339	3.9	3.1	32.887	14.037	
		<b>Consumption</b>			<b>Durables Consumption</b>			<b>Private Fixed Investment</b>			<b>Nonresidential Fixed Investment</b>		
		Percent change		Billions of 2000 \$	Percent change		Billions of 2000 \$	Percent change		Billions of 2000 \$	Percent change		
		Annual rate	Year ago		Annual rate	Year ago		Annual rate	Year ago		Annual rate	Year ago	
2003		7295.309			1020.572		5.8	1596.874		3.4	1081.810		1.0
2004		7561.380			1084.786		6.3	1712.757		7.3	1144.264		5.8
2005		7803.593			1137.415		4.9	1831.427		6.9	1225.790		7.1
2006		8044.054			1180.469		3.8	1874.694		2.4	1306.762		6.6
2004	1	7475.116	4.4	4.0	1066.225	5.8	9.8	1647.881	-0.2	7.3	1099.133	-2.6	4.9
	2	7520.472	2.4	3.7	1071.336	1.9	6.1	1698.704	12.9	7.8	1127.496	10.7	4.9
	3	7585.507	3.5	3.2	1091.520	7.8	4.0	1736.716	9.3	6.8	1160.749	12.3	5.6
	4	7664.290	4.2	3.7	1110.065	7.0	5.6	1767.743	7.3	7.2	1189.666	10.3	7.5
2005	1	7709.377	2.4	3.1	1116.030	2.2	4.7	1785.306	4.0	8.3	1199.486	3.3	9.1
	2	7775.220	3.5	3.4	1146.298	11.3	7.0	1819.775	7.9	7.1	1214.147	5.0	7.7
	3	7852.791	4.1	3.5	1163.548	6.2	6.6	1854.949	8.0	6.8	1239.503	8.6	6.8
	4	7876.850	1.2	2.8	1123.791	-13.0	1.2	1865.645	2.3	5.5	1250.025	3.4	5.1
2006	1	7961.901	4.4	3.3	1167.761	16.6	4.6	1901.356	7.9	6.5	1289.723	13.3	7.5
	2	8009.279	2.4	3.0	1170.169	0.8	2.1	1892.290	-1.9	4.0	1303.165	4.2	7.3
	3	8063.801	2.8	2.7	1186.322	5.6	2.0	1869.607	-4.7	0.8	1319.428	5.1	6.4
	4	8141.236	3.9	3.4	1197.606	3.9	6.6	1835.541	-7.1	-1.6	1314.758	-1.4	5.2
2007	1	8215.706	3.7	3.2	1223.160	8.8	4.7	1815.191	-4.4	-4.5	1321.732	2.1	2.5
	2	8244.349	1.4	2.9	1228.366	1.7	5.0	1829.345	3.2	-3.3	1356.624	11.0	4.1
	3	8298.466	2.7	2.9	1240.427	4.0	4.6	1827.532	-0.4	-2.3	1387.475	9.4	5.2

	GDP Chain Price Index			Employment Cost Index			ECI: Wages			ECI: Benefits		
	Index	Percent change		Index	Percent change		Index	Percent change		Index	Percent change	
		Annual rate	Year ago		Annual rate	Year ago		Annual rate	Year ago		Annual rate	Year ago
2003	106.409		2.1	92.7		3.8	94.2		2.8	88.8		6.1
2004	109.462		2.9	96.2		3.8	96.7		2.7	94.8		6.8
2005	113.005		3.2	99.2		3.1	99.2		2.5	99.2		4.6
2006	116.568		3.2	102.1		2.9	102.0		2.9	102.1		2.9
2004 1	108.180	3.7	2.3	94.9	4.8	3.8	95.7	2.5	2.7	92.9	11.0	6.8
2	109.185	3.8	2.9	95.8	3.8	3.9	96.4	3.0	2.7	94.4	6.6	7.2
3	109.807	2.3	3.0	96.7	3.8	3.8	97.2	3.4	2.6	95.4	4.3	6.7
4	110.677	3.2	3.2	97.3	2.5	3.7	97.6	1.7	2.6	96.5	4.7	6.6
2005 1	111.745	3.9	3.3	98.2	3.8	3.5	98.3	2.9	2.7	98.0	6.4	5.5
2	112.455	2.6	3.0	98.8	2.5	3.1	98.8	2.1	2.5	98.8	3.3	4.7
3	113.422	3.5	3.3	99.5	2.9	2.9	99.4	2.5	2.3	99.6	3.3	4.4
4	114.398	3.5	3.4	100.1	2.4	2.9	100.1	2.8	2.6	100.3	2.8	3.9
2006 1	115.363	3.4	3.2	100.8	2.8	2.6	100.8	2.8	2.5	100.8	2.0	2.9
2	116.350	3.5	3.5	101.6	3.2	2.8	101.6	3.2	2.8	101.5	2.8	2.7
3	117.030	2.4	3.2	102.5	3.6	3.0	102.4	3.2	3.0	102.5	4.0	2.9
4	117.527	1.7	2.7	103.3	3.2	3.2	103.2	3.2	3.1	103.4	3.6	3.1
2007 1	118.750	4.2	2.9	103.9	2.3	3.1	104.3	4.3	3.5	103.1	-1.2	2.3
2	119.527	2.6	2.7	104.8	3.5	3.1	105.1	3.1	3.4	104.2	4.3	2.7
3	119.806	0.9	2.4	105.6	3.1	3.0	105.9	3.1	3.4	105.0	3.1	2.4
	Exports			Imports			Nonfarm Output per Hour			Nonfarm Compensation per Hour		
	Billions of 2000 \$	Percent change		Billions of 2000 \$	Percent change		Index	Percent change		Index	Percent change	
		Annual rate	Year ago		Annual rate	Year ago		Annual rate	Year ago		Annual rate	Year ago
2003	1026.109		1.3	1545.017		4.1	128.034		3.7	150.423		4.0
2004	1126.134		9.7	1719.939		11.3	131.542		2.7	155.869		3.6
2005	1203.444		6.9	1821.457		5.9	134.097		1.9	162.149		4.0
2006	1304.104		8.4	1928.567		5.9	135.393		1.0	168.506		3.9
2004 1	1101.785	10.0	9.8	1650.888	12.3	9.3	130.220	0.9	4.0	152.871	-0.2	3.8
2	1119.392	6.5	12.0	1710.450	15.2	12.1	131.713	4.7	3.8	154.850	5.3	3.4
3	1128.041	3.1	9.9	1730.757	4.8	12.4	132.000	0.9	1.5	156.824	5.2	3.4
4	1155.317	10.0	7.4	1787.662	13.8	11.5	132.222	0.7	1.8	158.890	5.4	3.9
2005 1	1172.397	6.0	6.4	1796.826	2.1	8.8	133.417	3.7	2.5	160.300	3.6	4.9
2	1199.343	9.5	7.1	1800.339	0.8	5.3	133.515	0.3	1.4	160.889	1.5	3.9
3	1205.647	2.1	6.9	1809.724	2.1	4.6	134.964	4.4	2.2	163.153	5.7	4.0
4	1236.387	10.6	7.0	1878.952	16.2	5.1	134.485	-1.4	1.7	164.210	2.6	3.3
2006 1	1270.569	11.5	8.4	1910.696	6.9	6.3	135.311	2.5	1.4	167.079	7.2	4.2
2	1288.438	5.7	7.4	1915.005	0.9	6.4	135.583	0.8	1.5	166.978	-0.2	3.8
3	1306.571	5.7	8.4	1940.374	5.4	7.2	135.041	-1.6	0.1	167.517	1.3	2.7
4	1350.861	14.3	9.3	1948.210	1.6	3.7	135.638	1.8	0.9	172.417	12.2	5.0
2007 1	1354.654	1.1	6.6	1966.775	3.9	2.9	135.858	0.7	0.4	174.906	5.9	4.7
2	1379.485	7.5	7.1	1953.360	-2.7	2.0	136.584	2.2	0.7	176.794	4.4	5.9
3	1440.449	18.9	10.2	1973.844	4.3	1.7	138.228	4.9	2.4	178.821	4.7	6.7

	Household Survey Employment				Nonfarm Payroll Employment				Nonfarm Aggregate Hours				
	Thousands	Change	Percent change		Thousands	Change	Percent change		Index	Percent change			
			Annual rate	Year ago			Annual rate	Year ago		Monthly rate	Annual rate	Year ago	
2002	136481	-458		-0.3	130347	-1485		-1.1	100.0			-2.0	
2003	137730	1249		0.9	129990	-357		-0.3	98.6			-1.4	
2004	139242	1512		1.1	131423	1433		1.1	100.2			1.6	
2005	141715	2473		1.8	133696	2273		1.7	102.7			2.5	
2006	144419	2705		1.9	136175	2478		1.9	105.7			2.9	
2005	1	140385	326	0.9	1.4	132656	427	1.3	1.6	101.5	0.3	1.2	2.2
	2	141501	1116	3.2	1.9	133371	715	2.2	1.6	102.4	0.9	3.5	2.5
	3	142319	818	2.3	2.0	134107	736	2.2	1.9	103.1	0.7	2.8	2.6
	4	142655	336	0.9	1.9	134652	546	1.6	1.8	103.9	0.8	3.3	2.7
2006	1	143366	711	2.0	2.1	135393	741	2.2	2.1	104.8	0.8	3.4	3.2
	2	144065	699	2.0	1.8	135913	520	1.5	1.9	105.6	0.8	3.1	3.1
	3	144618	553	1.5	1.6	136442	529	1.6	1.7	106.0	0.3	1.4	2.8
	4	145629	1011	2.8	2.1	136951	509	1.5	1.7	106.5	0.5	2.0	2.5
2007	1	146043	415	1.1	1.9	137447	496	1.5	1.5	106.8	0.3	1.1	1.9
	2	145956	-87	-0.2	1.3	137864	417	1.2	1.4	107.4	0.5	2.1	1.7
	3	146054	97	0.3	1.0	138160	296	0.9	1.3	107.7	0.3	1.2	1.6
2005	Oct	142586	137	1.2	2.0	134351	107	1.0	1.7	103.6	0.1	1.2	2.4
	Nov	142597	11	0.1	1.7	134702	351	3.2	1.9	104.0	0.4	4.7	3.0
	Dec	142782	185	1.6	1.9	134904	202	1.8	1.9	104.2	0.2	2.3	2.7
2006	Jan	143099	317	2.7	2.0	135110	206	1.8	2.0	104.5	0.3	3.5	3.2
	Feb	143319	220	1.9	2.1	135410	300	2.7	2.0	104.8	0.3	3.5	3.1
	Mar	143680	361	3.1	2.2	135659	249	2.2	2.1	105.1	0.3	3.5	3.3
	Apr	143763	83	0.7	1.8	135803	144	1.3	2.0	105.6	0.5	5.9	3.1
	May	144045	282	2.4	1.7	135906	103	0.9	1.9	105.4	-0.2	-2.2	3.1
	Jun	144386	341	2.9	1.9	136030	124	1.1	1.8	105.8	0.4	4.7	3.1
	Jul	144330	-56	-0.5	1.6	136252	222	2.0	1.7	106.0	0.2	2.3	3.1
	Aug	144618	288	2.4	1.5	136438	186	1.7	1.7	105.9	-0.1	-1.1	2.8
	Sep	144906	288	2.4	1.7	136636	198	1.8	1.8	106.0	0.1	1.1	2.4
	Oct	145337	431	3.6	1.9	136745	109	1.0	1.8	106.3	0.3	3.4	2.6
	Nov	145623	286	2.4	2.1	136941	196	1.7	1.7	106.3	0.0	0.0	2.2
	Dec	145926	303	2.5	2.2	137167	226	2.0	1.7	106.9	0.6	7.0	2.6
2007	Jan	145957	31	0.3	2.0	137329	162	1.4	1.6	106.7	-0.2	-2.2	2.1
	Feb	145919	-38	-0.3	1.8	137419	90	0.8	1.5	106.4	-0.3	-3.3	1.5
	Mar	146254	335	2.8	1.8	137594	175	1.5	1.4	107.3	0.8	10.6	2.1
	Apr	145786	-468	-3.8	1.4	137716	122	1.1	1.4	107.1	-0.2	-2.2	1.4
	May	145943	157	1.3	1.3	137904	188	1.7	1.5	107.3	0.2	2.3	1.8
	Jun	146140	197	1.6	1.2	137973	69	0.6	1.4	107.7	0.4	4.6	1.8
	Jul	146110	-30	-0.2	1.2	138066	93	0.8	1.3	107.6	-0.1	-1.1	1.5
	Aug	145794	-316	-2.6	0.8	138159	93	0.8	1.3	107.7	0.1	1.1	1.7
	Sep	146257	463	3.9	0.9	138255	96	0.8	1.2	107.8	0.1	1.1	1.7
	Oct	146007	-250	-2.0	0.5	138421	166	1.5	1.2	107.9	0.1	1.1	1.5



	Unempl. Rate	Retail and Food Services Sales				Industrial Production				Treasury Yields		
		Billions of dollars	Percent change			Index	Percent change			(Percent)		
			Monthly/ quarterly	Annual rate	Year ago		Monthly/ quarterly	Annual rate	Year ago	3-mo	10-yr	
2002	5.8	3467.263			2.4	100.0000				0.0	1.60	4.61
2003	6.0	3614.093			4.2	101.0619				1.1	1.01	4.02
2004	5.5	3833.271			6.1	103.5734				2.5	1.37	4.27
2005	5.1	4085.340			6.6	106.9340				3.2	3.15	4.29
2006	4.6	4336.250			6.1	111.2407				4.0	4.73	4.79
2005	1	5.3	994.839	1.0	4.1	6.0	105.9764	1.1	4.6	3.3	2.54	4.30
	2	5.1	1015.843	2.1	8.7	7.2	106.6983	0.7	2.8	3.4	2.86	4.16
	3	5.0	1034.026	1.8	7.4	7.4	106.9113	0.2	0.8	3.1	3.36	4.21
	4	5.0	1040.632	0.6	2.6	5.7	108.1499	1.2	4.7	3.2	3.83	4.49
2006	1	4.7	1072.960	3.1	13.0	7.9	109.4847	1.2	5.0	3.3	4.39	4.57
	2	4.6	1081.227	0.8	3.1	6.4	111.2261	1.6	6.5	4.2	4.70	5.07
	3	4.7	1089.867	0.8	3.2	5.4	112.3327	1.0	4.0	5.1	4.91	4.90
	4	4.5	1092.196	0.2	0.9	5.0	111.9193	-0.4	-1.5	3.5	4.90	4.63
2007	1	4.5	1109.368	1.6	6.4	3.4	112.2157	0.3	1.1	2.5	4.98	4.68
	2	4.5	1124.080	1.3	5.4	4.0	113.1718	0.9	3.5	1.7	4.74	4.85
	3	4.6	1133.714	0.9	3.5	4.0	114.3972	1.1	4.4	1.8	4.30	4.73
2005	Nov	5.0	347.671	0.7	8.8	6.2	108.2431	1.1	14.1	3.4	3.88	4.54
	Dec	4.9	347.730	0.0	0.2	5.1	109.1496	0.8	10.5	3.6	3.89	4.47
2006	Jan	4.7	359.254	3.3	47.9	9.0	109.1081	-0.0	-0.5	3.3	4.24	4.42
	Feb	4.8	356.451	-0.8	-9.0	7.2	109.3862	0.3	3.1	3.0	4.43	4.57
	Mar	4.7	357.255	0.2	2.7	7.4	109.9597	0.5	6.5	3.6	4.51	4.72
	Apr	4.7	361.376	1.2	14.8	7.1	110.9443	0.9	11.3	4.5	4.60	4.99
	May	4.6	359.363	-0.6	-6.5	6.9	110.8746	-0.1	-0.8	4.0	4.72	5.11
	Jun	4.6	360.488	0.3	3.8	5.4	111.8594	0.9	11.2	4.3	4.79	5.11
	Jul	4.8	363.633	0.9	11.0	4.5	112.3067	0.4	4.9	4.7	4.95	5.09
	Aug	4.7	364.172	0.1	1.8	6.3	112.5208	0.2	2.3	4.6	4.96	4.88
	Sep	4.6	362.062	-0.6	-6.7	5.4	112.1707	-0.3	-3.7	6.0	4.81	4.72
	Oct	4.4	361.621	-0.1	-1.5	4.7	111.9994	-0.2	-1.8	4.6	4.92	4.73
	Nov	4.5	363.234	0.4	5.5	4.5	111.5291	-0.4	-4.9	3.0	4.94	4.60
	Dec	4.5	367.341	1.1	14.4	5.6	112.2295	0.6	7.8	2.8	4.85	4.56
2007	Jan	4.6	367.230	-0.0	-0.4	2.2	111.6827	-0.5	-5.7	2.4	4.98	4.76
	Feb	4.5	369.287	0.6	6.9	3.6	112.5319	0.8	9.5	2.9	5.03	4.72
	Mar	4.4	372.851	1.0	12.2	4.4	112.4324	-0.1	-1.1	2.2	4.94	4.56
	Apr	4.5	371.651	-0.3	-3.8	2.8	113.0619	0.6	6.9	1.9	4.87	4.69
	May	4.5	377.689	1.6	21.3	5.1	112.9510	-0.1	-1.2	1.9	4.73	4.75
	Jun	4.5	374.740	-0.8	-9.0	4.0	113.5026	0.5	6.0	1.5	4.61	5.10
	Jul	4.6	376.906	0.6	7.2	3.7	114.2392	0.6	8.1	1.7	4.82	5.00
	Aug	4.6	377.173	0.1	0.9	3.6	114.3779	0.1	1.5	1.7	4.20	4.67
	Sep	4.7	379.635	0.7	8.1	4.9	114.5746	0.2	2.1	2.1	3.89	4.52
	Oct	4.7	380.259	0.2	2.0	5.2	113.9957	-0.5	-5.9	1.8	3.90	4.53
	Nov										3.27	4.15

		Consumer Price Index					Consumer Price Index less Food and Energy					Producer Price Index Finished Goods			
		Percent change					Percent change					Percent change			
		Index	Monthly/ quarterly	Annual rate	Year ago	Year to date	Index	Monthly/ quarterly	Annual rate	Year ago	Year to date	Index	Monthly/ quarterly	Annual rate	Year ago
2002		179.867			1.6		190.442			2.3		138.9			-1.3
2003		183.967			2.3		193.225			1.5		143.3			3.2
2004		188.900			2.7		196.625			1.8		148.5			3.6
2005		195.258			3.4		200.892			2.2		155.7			4.9
2006		201.583			3.2		205.925			2.5		160.3			2.9
2005	1	192.133	0.5	2.1	3.0	2.1	199.500	0.6	2.6	2.3	2.6	152.7	0.8	3.2	4.7
	2	193.967	1.0	3.9	2.9	3.0	200.433	0.5	1.9	2.2	2.2	154.0	0.9	3.5	4.1
	3	196.633	1.4	5.6	3.8	3.9	201.167	0.4	1.5	2.1	2.0	156.8	1.8	7.3	5.6
	4	198.300	0.8	3.4	3.7	3.7	202.467	0.6	2.6	2.1	2.1	159.4	1.7	7.0	5.2
2006	1	199.233	0.5	1.9	3.7	1.9	203.667	0.6	2.4	2.1	2.4	159.4	-0.0	-0.1	4.4
	2	201.700	1.2	5.0	4.0	3.5	205.333	0.8	3.3	2.4	2.9	160.9	0.9	3.7	4.4
	3	203.233	0.8	3.1	3.4	3.3	206.867	0.7	3.0	2.8	2.9	161.1	0.2	0.7	2.8
	4	202.167	-0.5	-2.1	1.9	1.9	207.833	0.5	1.9	2.7	2.7	159.9	-0.8	-3.1	0.3
2007	1	204.068	0.9	3.8	2.4	3.8	209.010	0.6	2.3	2.6	2.3	162.5	1.6	6.7	1.9
	2	207.057	1.5	6.0	2.7	4.9	210.006	0.5	1.9	2.3	2.1	166.4	2.4	10.0	3.4
	3	208.019	0.5	1.9	2.4	3.9	211.299	0.6	2.5	2.1	2.2	166.7	0.2	0.8	3.5
2005	Oct	199.200	0.3	3.7	4.4	5.0	202.000	0.3	3.6	2.1	2.1	159.8	0.6	7.0	5.8
	Nov	197.900	-0.7	-7.6	3.5	3.8	202.500	0.2	3.0	2.1	2.2	158.7	-0.7	-8.0	4.3
	Dec	197.800	-0.1	-0.6	3.4	3.4	202.900	0.2	2.4	2.2	2.2	159.8	0.7	8.6	5.5
2006	Jan	199.000	0.6	7.5	4.0	7.5	203.200	0.1	1.8	2.1	1.8	160.3	0.3	3.8	5.6
	Feb	199.100	0.1	0.6	3.6	4.0	203.600	0.2	2.4	2.1	2.1	158.6	-1.1	-12.0	3.9
	Mar	199.600	0.3	3.1	3.4	3.7	204.200	0.3	3.6	2.1	2.6	159.3	0.4	5.4	3.6
	Apr	200.800	0.6	7.5	3.6	4.6	204.800	0.3	3.6	2.3	2.8	160.4	0.7	8.6	4.0
	May	201.900	0.5	6.8	4.1	5.0	205.300	0.2	3.0	2.4	2.9	160.7	0.2	2.3	4.4
	Jun	202.400	0.2	3.0	4.3	4.7	205.900	0.3	3.6	2.6	3.0	161.5	0.5	6.1	4.9
	Jul	203.200	0.4	4.8	4.2	4.7	206.400	0.2	3.0	2.7	3.0	161.3	-0.1	-1.5	3.9
	Aug	203.800	0.3	3.6	3.9	4.6	206.900	0.2	2.9	2.8	3.0	161.9	0.4	4.6	3.7
	Sep	202.700	-0.5	-6.3	2.1	3.3	207.300	0.2	2.3	2.9	2.9	160.2	-1.1	-11.9	0.8
	Oct	201.800	-0.4	-5.2	1.3	2.4	207.600	0.1	1.8	2.8	2.8	157.8	-1.5	-16.6	-1.3
	Nov	201.900	0.0	0.6	2.0	2.3	207.800	0.1	1.2	2.6	2.6	160.3	1.6	20.8	1.0
	Dec	202.800	0.4	5.5	2.5	2.5	208.100	0.1	1.7	2.6	2.6	161.5	0.7	9.4	1.1
2007	Jan	203.153	0.2	2.1	2.1	2.1	208.632	0.3	3.1	2.7	3.1	160.6	-0.6	-6.5	0.2
	Feb	203.906	0.4	4.5	2.4	3.3	209.135	0.2	2.9	2.7	3.0	162.6	1.2	16.0	2.5
	Mar	205.146	0.6	7.5	2.8	4.7	209.263	0.1	0.7	2.5	2.3	164.2	1.0	12.5	3.1
	Apr	205.999	0.4	5.1	2.6	4.8	209.634	0.2	2.1	2.4	2.2	165.6	0.9	10.7	3.2
	May	207.387	0.7	8.4	2.7	5.5	209.948	0.1	1.8	2.3	2.1	166.7	0.7	8.3	3.7
	Jun	207.784	0.2	2.3	2.7	5.0	210.436	0.2	2.8	2.2	2.3	166.8	0.1	0.7	3.3
	Jul	208.028	0.1	1.4	2.4	4.5	210.933	0.2	2.9	2.2	2.3	167.6	0.5	5.9	3.9
	Aug	207.738	-0.1	-1.7	1.9	3.7	211.250	0.2	1.8	2.1	2.3	165.3	-1.4	-15.3	2.1
	Sep	208.292	0.3	3.2	2.8	3.6	211.714	0.2	2.7	2.1	2.3	167.2	1.1	14.7	4.4
	Oct	208.903	0.3	3.6	3.5	3.6	212.050	0.2	1.9	2.1	2.3	167.3	0.1	0.7	6.0

## Notes

Pages 4, 5: **Final Sales** is gross domestic product (GDP) minus change in private inventories. **Advance, Preliminary, and Final GDP Growth Rates** are released during the first, second, and third months of the following quarter. Changes result from incorporation of more complete information. Real GDP is measured in 2000 dollars. The **ISM** (formerly Purchasing Managers' **Index**) is a weighted average of diffusion indexes for new orders, production, supplier deliveries, inventories, and employment. **Aggregate and Average Weekly Hours** are paid hours of production and nonsupervisory employees. The **Inventory-Sales Ratio** uses nominal (current-dollar) inventory and sales data.

Page 6: For information on how to calculate the **Contribution** of a component to the overall GDP growth rate, see the October 1999 issue of the Survey of Current Business, p. 16. The sign is changed for **Imports**.

Page 7: Ten-year **Treasury Yields** are adjusted to constant maturity; three-month yields are secondary market averages. All rates used in the yield curves are adjusted to constant maturity. The 30-year constant maturity series was discontinued by the Treasury Department as of Feb. 18, 2002. **Standard and Poor's 500 Index with Reinvested Dividends** shows the total return: capital gains plus dividends.

Pages 8, 9: **Oil** (West Texas intermediate) and **Natural Gas** (Henry Hub) spot and futures prices are listed in the *Wall Street Journal*. Spot prices are monthly averages of daily prices; futures prices are usually taken from the last trading day of the month. **Consumer Price Index** is for all urban consumers. The **Consumption Chain Price Index** is the index associated with the personal consumption expenditures component of GDP. The **Employment Cost Index (ECI)** covers private nonfarm employers. **ECI Compensation** refers to a fixed sample of jobs, while **Compensation per Hour** covers all workers in the nonfarm business sector in a given quarter. In both cases, compensation is wages and salaries plus benefits.

Pages 10, 11: Effective with the May 2003 **Employment Situation**, the establishment survey data for employment, hours, and earnings have been converted from the 1987 SIC system to the 2002 NAICS system. For more information see <http://www.bls.gov/ces/>. **Nonfarm Payroll Employment** is counted in a survey of about 400,000 establishments (Current Employment Statistics). It excludes self-employed individuals and workers in private households, but double-counts individuals with more than one job. The **Household Survey** (Current Population Survey) of about 60,000 households provides estimates of civilian employment, unemployment rate, labor force participation rate, and employment-population ratio. **Population** is civilian, noninstitutional, 16 years and over. The 90 percent confidence intervals for the unemployment rate ( $\pm 0.2$  percentage points) and change in household survey employment ( $\pm 290,000$ ) measure uncertainty due to sample size. Because the household survey was changed in January 1994, data prior to this date are not strictly comparable. The Bureau of Labor Statistics announced several revisions to the Household Survey on Feb. 7, 2003, with the release of the January 2003 data. For more information, see [www.bls.gov/cps/](http://www.bls.gov/cps/). The **Job Openings rate** is the number of job openings on the last business day of the month as a percent of total employment plus job openings.

Page 13: The **Michigan Consumer Sentiment Index** shows changes in a summary measure of consumers' answers to five questions about their current and expected financial situation, expectations about future economic conditions, and attitudes about making large purchases. The survey is based on a representative sample of U.S. households.

Page 15: **Gross Private Saving** is the sum of personal saving, undistributed corporate profits with IVA and CCAAdj (see notes for pp. 18-19), and private wage accruals less disbursements. **Gross Government Saving** is net government saving (surplus/deficit) plus consumption of fixed capital. **Balance on Current Account (NIPA)** is net capital transfer payments to the rest of the world plus net lending or net borrowing (international trade and income flows).

Pages 16, 17: **Government Consumption and Investment** is current expenditures on goods and services, including capital consumption (depreciation) and gross investment, as reported in the NIPAs. The **Unified Federal Budget**

**Surplus/Deficit** differs from **NIPA Basis** in four main ways: (1) NIPA excludes transactions involving existing assets; (2) NIPA outlays exclude government investment and include consumption of government capital, while unified budget outlays do the reverse; (3) NIPA accounts exclude Puerto Rico and U.S. territories; and (4) various timing issues are handled differently. **Outlays and Receipts** are from the NIPAs, except as noted. Since 1977, the federal **Fiscal Year** starts on October 1. Excluded agency debt was 0.6 percent of federal debt at the end of fiscal 1997. **Federal Debt Held by the Public** includes holdings of the Federal Reserve System and excludes holdings of the social security and other federal trust funds. Federal grants in aid to state and local governments appear in both state and local receipts and federal outlays.

Pages 18, 19: The **Trade Balance** (shown on a balance of payments basis) is the difference between exports and imports of goods (merchandise) and services. It is nearly identical in concept to the **Net Exports** component of GDP, but differs slightly in accounting details. The **Investment Income Balance** equals income received from U.S.-owned assets in other countries minus income paid on foreign-owned assets in the U.S. The investment income balance is nearly identical in concept to the difference between gross national product and gross domestic product, but differs in accounting details. The **Current Account Balance** is the trade balance plus the balance on investment income plus net unilateral transfers to the U.S. from other countries.

Pages 20, 21: **Output per Hour (Y/H)**, **Unit Labor Cost (C/Y)**, and **Compensation per Hour (C/H)** are indexes which approximately obey the following relationship:  $\%(Y/H) + \%(C/Y) = \%(C/H)$  with  $\%( )$  meaning percent changes. Unit labor cost is shown on page 9. **Real Compensation per Hour** uses the CPI to adjust for the effects of inflation. Nonfarm business accounted for about 76 percent of the value of GDP in 1996, while nonfinancial corporations accounted for about 54 percent. **Inventory Valuation Adjustments (IVA)** remove the effect of changes in the value of existing inventories from corporate profits and proprietors' income. (This change in value does not correspond to current production and therefore is not part of GDP). **Capital Consumption Adjustments (CCAdj)** increase profits and proprietors' income by the difference between estimates of economic depreciation and depreciation allowed by the tax code. Components of national income not shown are rental income of persons and net interest.

**NOTE:** Most measures of economic activity are now based on the 2002 North American Industry Classification System (NAICS), which replaces the 1987 Standard Industry Classification (SIC) system.

## Sources

*Bureau of Economic Analysis (BEA), U.S. Dept. of Commerce*

National income and product accounts, international trade and investment data (except by country), auto and light truck sales.

*Census Bureau, U.S. Dept. of Commerce*

Inventory-sales ratios, retail sales, capital goods orders, housing starts, exports and imports by country.

*Bureau of Labor Statistics (BLS), U.S. Dept. of Labor*

All employment-related data, employment cost index, consumer and producer price indexes, unit labor cost, output per hour, compensation per hour, multifactor productivity.

*United States Department of Treasury*

Unified budget receipts, outlays, deficit, debt.

*Federal Reserve Board*

Index of industrial production, treasury yields, exchange rates, capacity utilization, household debt.

*The Survey Research Center, The University of Michigan*

Consumer sentiment index.

*Organization for Economic Cooperation and Development (OECD)*

GDP for major trading partners (not available on FRED).