

## Twist and Shout, or Back to the Sixties

The Federal Open Market Committee (FOMC) has increased the target federal funds rate at each meeting since June 2004, to 2.5 percent following the February 2005 meeting. A puzzling aspect of recent financial market developments has been that, despite the rise of 150 basis points in the Fed's target rate, longer-term rates have remained roughly constant. In recent testimony, Fed Chairman Alan Greenspan commented extensively on this issue, eventually concluding that the market behavior "remains a conundrum."<sup>1</sup>

There was a time when this same behavior would not have been considered so unusual. It occurred in the early 1960s, a cherished era among monetary economists and policymakers. That era sported relatively rapid growth in both real output and productivity, low inflation rates, and low rates of interest, not unlike the present day. Although many years have passed since that time, the intervening years have been associated with higher inflation—at times substantially higher—and have been dominated by Federal Reserve efforts to move inflation lower and build credibility for continued low inflation. The low level of inflation and high level of Fed credibility characteristic of the early 1960s returned in the early 2000s. Thus, the early 1960s may give a better indication of the nature of today's financial markets than most of the intervening years.

The chart shows the evolution of short- and longer-term interest rates during the 38 months following the last month of the recession relevant to each era. The most recent recession ended in November 2001, while for the earlier era it ended in February 1961. The chart shows the effective federal funds rate along with the longer-term 10-year Treasury note yield. The most striking characteristic is that in both eras, once the federal funds rate began rising following the recession, the longer-term bond yield remained anchored near 4 percent. One explanation is that, in both eras, the private sector viewed movements in short-term interest rates as exactly those necessary to keep inflation low and steady, so that longer-term inflation expectations and hence longer-term bond yields could remain anchored.

Similarities in the interest rate environment may also be attributable in part to similarities in economic

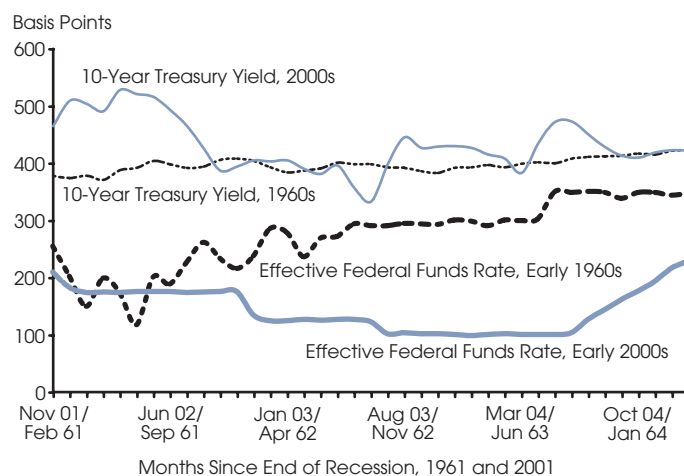
performance. The average annualized quarterly growth rates of key variables were a lot alike during 2002:Q1 to 2004:Q4 as compared with the corresponding 1961:Q2 to 1964:Q4 period. Average nonfarm business sector productivity growth, for instance, was almost identical during the two periods, 3.90 percent today versus 3.80 percent in the early 1960s. Inflation rates were similar as well, with the core consumer price index increasing, on average, 1.80 percent during the current period versus 1.40 percent during the earlier era. Real output growth was robust in both periods as well, 3.50 percent in the early 2000s versus 5.40 percent in the early 1960s.

The expansion of the 1960s was one of the longest on record, lasting until December 1969, when a relatively mild recession occurred. Inflation began to rise unexpectedly during the last half of the 1960s, setting the stage for the economically volatile decade to follow. Whether today's FOMC will manage a 1960s-style expansion remains to be seen, but the era may be a good one to learn from given the similar levels of inflation and Fed credibility.

—James B. Bullard

<sup>1</sup>Testimony of Chairman Alan Greenspan, Federal Reserve Board's semiannual Monetary Policy Report to the Congress Before the Committee on Banking, Housing, and Urban Affairs, U.S. Senate, February 16, 2005.

Interest Rates, Then and Now



# Contents

---

---

## Page

3	Economy at a Glance
4	Output and Growth
7	Interest Rates
8	Inflation and Prices
10	Labor Markets
12	Consumer Spending
14	Investment Spending
16	Government Revenues, Spending, and Debt
18	International Trade
20	Productivity and Profits
22	Quick Reference Tables
27	Notes and Sources

## Conventions used in this publication:

1. Shaded areas indicate recessions, as determined by the National Bureau of Economic Research.
2. *Percent change* refers to simple percent changes. *Percent change from year ago* refers to the percent change from the same month or quarter during the previous year. *Compounded annual rate of change* shows what the growth rate would be over an entire year if the same simple percent change continued for four quarters or twelve months. The compounded annual rate of change of  $x$  between the previous quarter  $t-1$  and the current quarter  $t$  is:  $[(x_t/x_{t-1})^4 - 1] \times 100$ . For monthly data replace 4 with 12.
3. All data with significant seasonal patterns are adjusted accordingly, unless labeled NSA.

We welcome your comments addressed to:

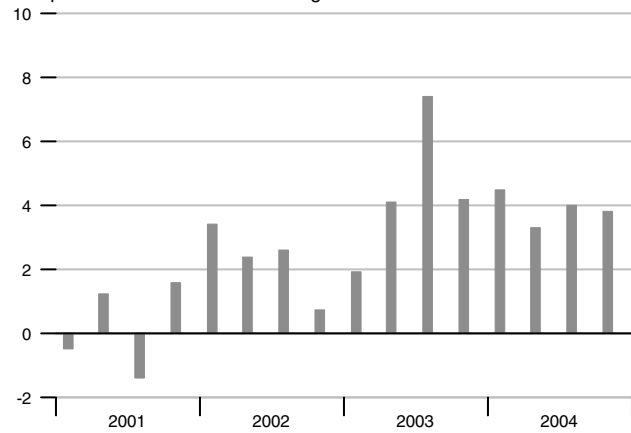
Editor, *National Economic Trends*  
Research Division  
Federal Reserve Bank of St. Louis  
P.O. Box 442  
St. Louis, MO 63166-0442

or to:

stlsFRED@stls.frb.org

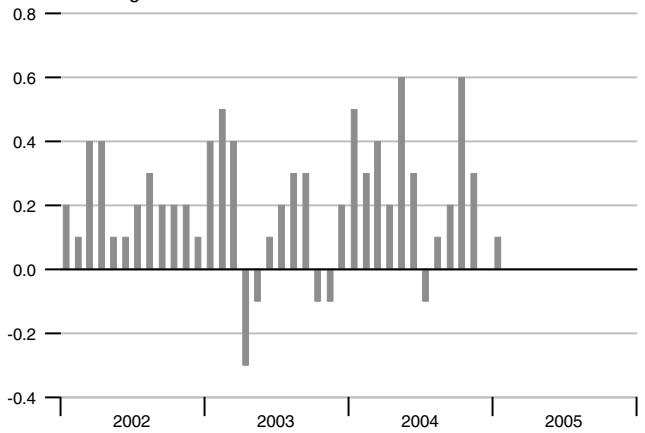
### Real GDP Growth

Compounded annual rates of change



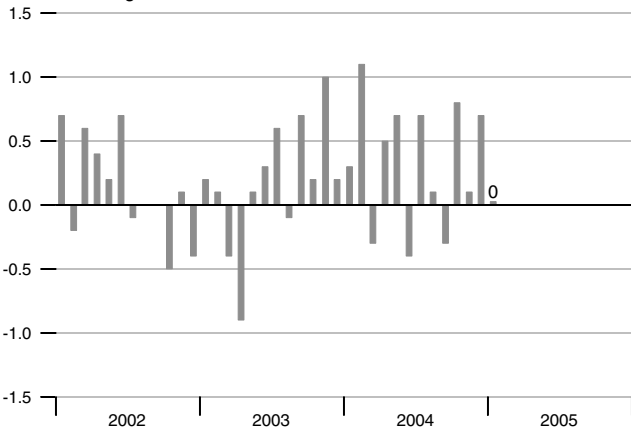
### Consumer Price Index

Percent change



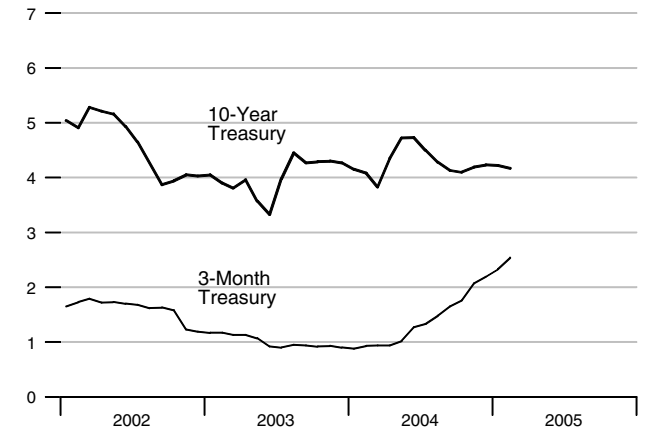
### Industrial Production

Percent change



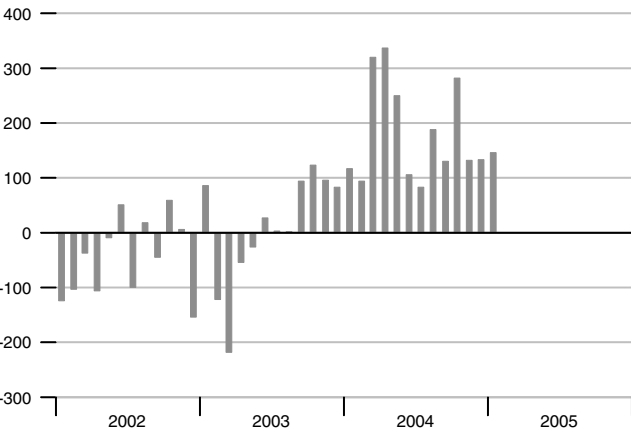
### Interest Rates

Percent



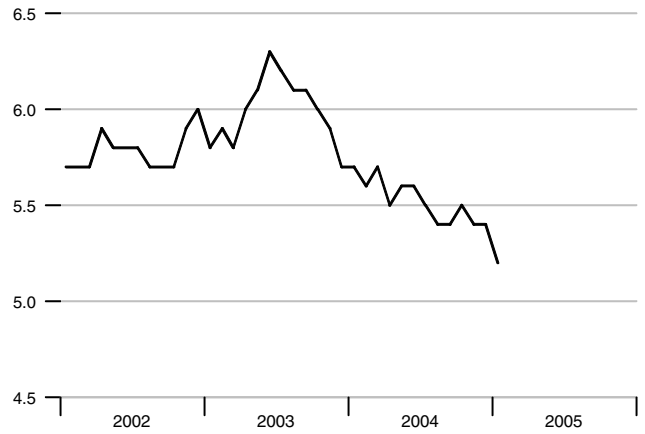
### Change in Nonfarm Payrolls

Thousands



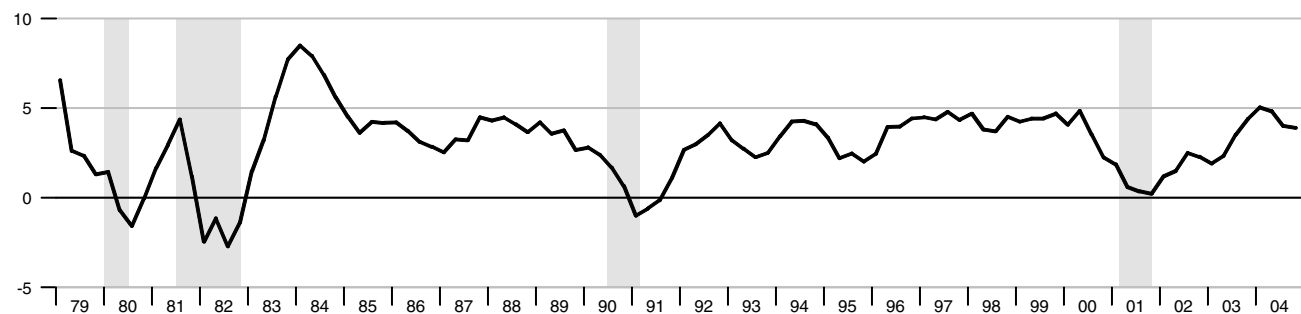
### Unemployment Rate

Percent of labor force



### Real Gross Domestic Product

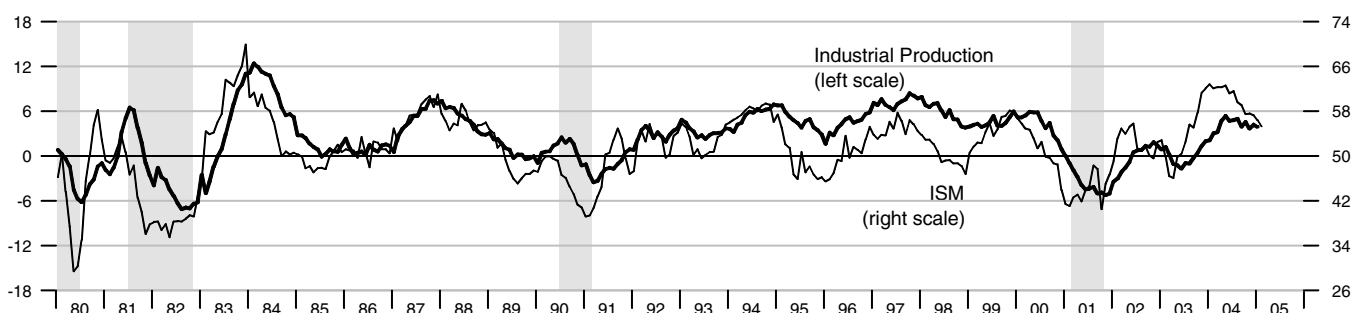
Percent change from year ago



### Industrial Production and Institute for Supply Management (ISM) Indexes

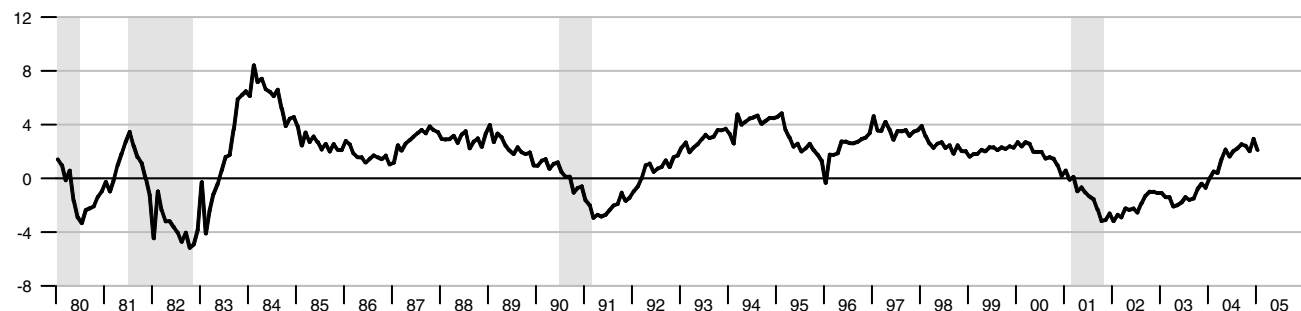
Percent change from year ago

Index



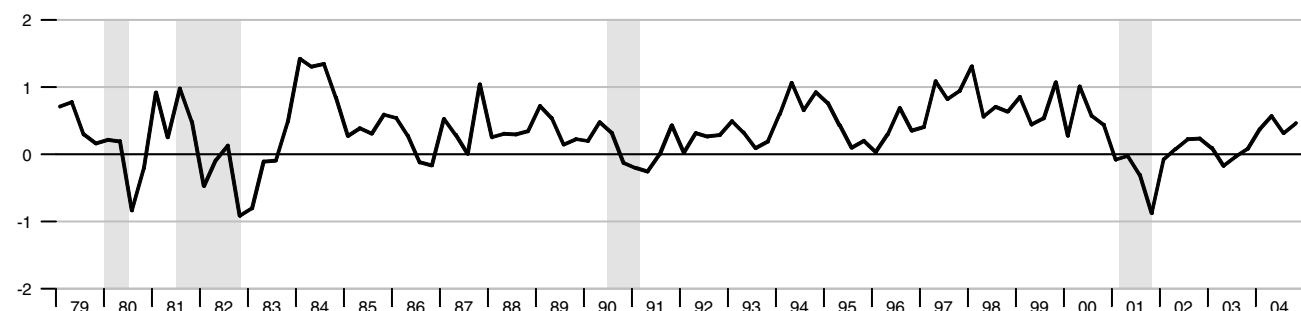
### Aggregate Private Nonfarm Hours

Percent change from year ago

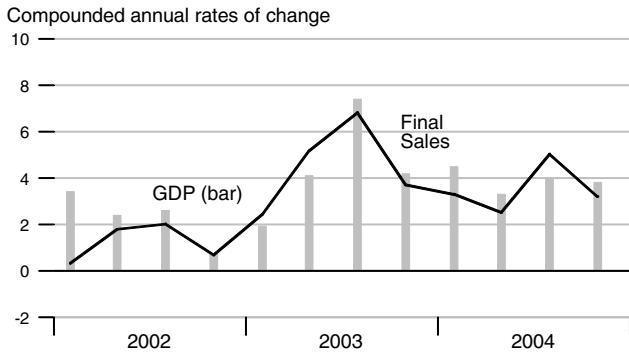


### Real Change in Private Inventories

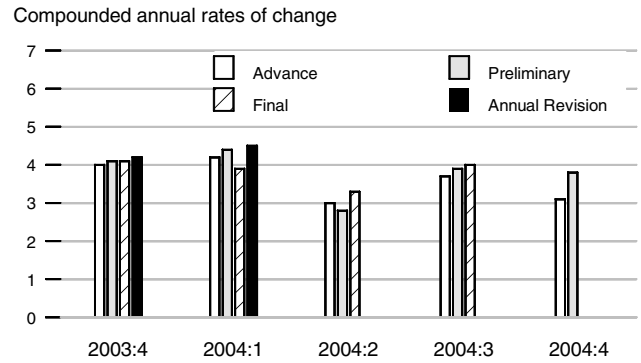
Percent of GDP



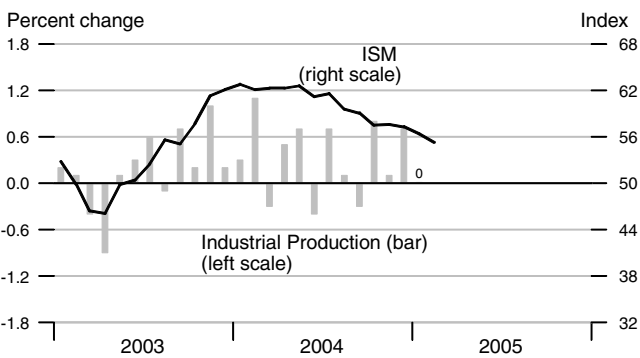
### Real Final Sales and GDP



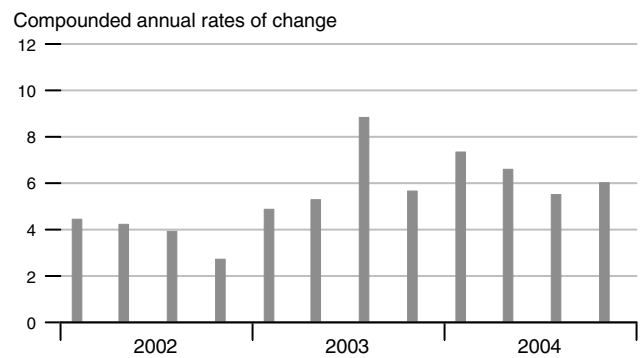
### Real GDP Revisions



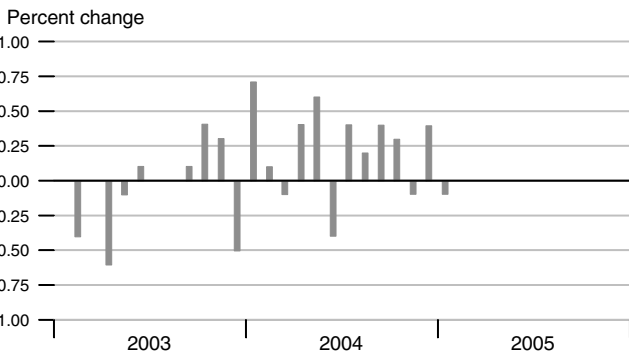
### Industrial Production and ISM Index



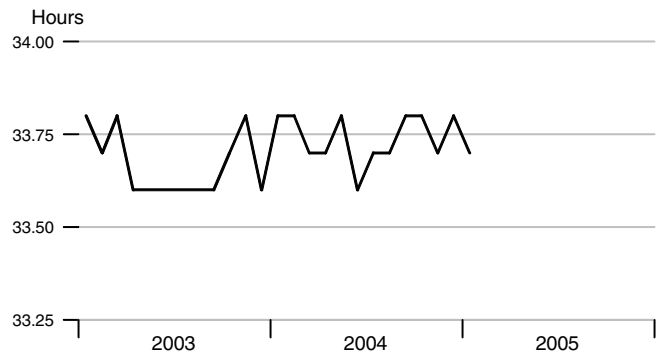
### Nominal Gross Domestic Product



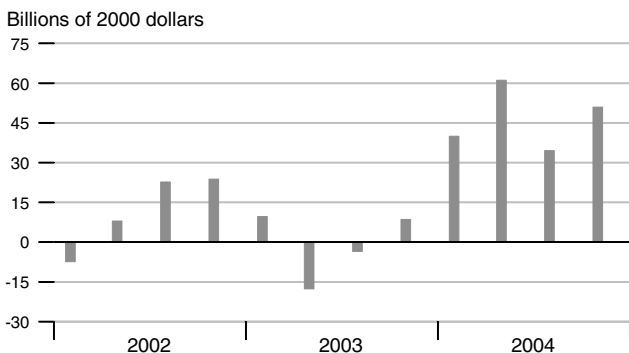
### Aggregate Private Nonfarm Hours



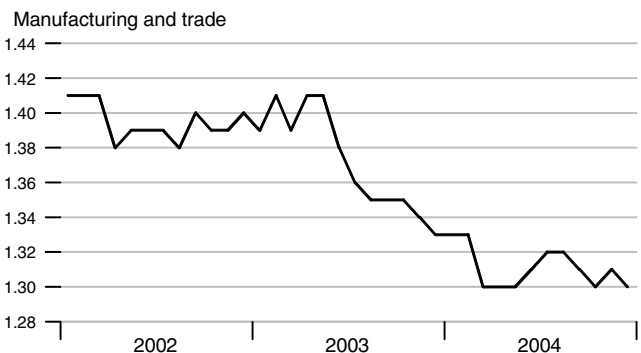
### Average Weekly Private Nonfarm Hours



### Real Change in Private Inventories

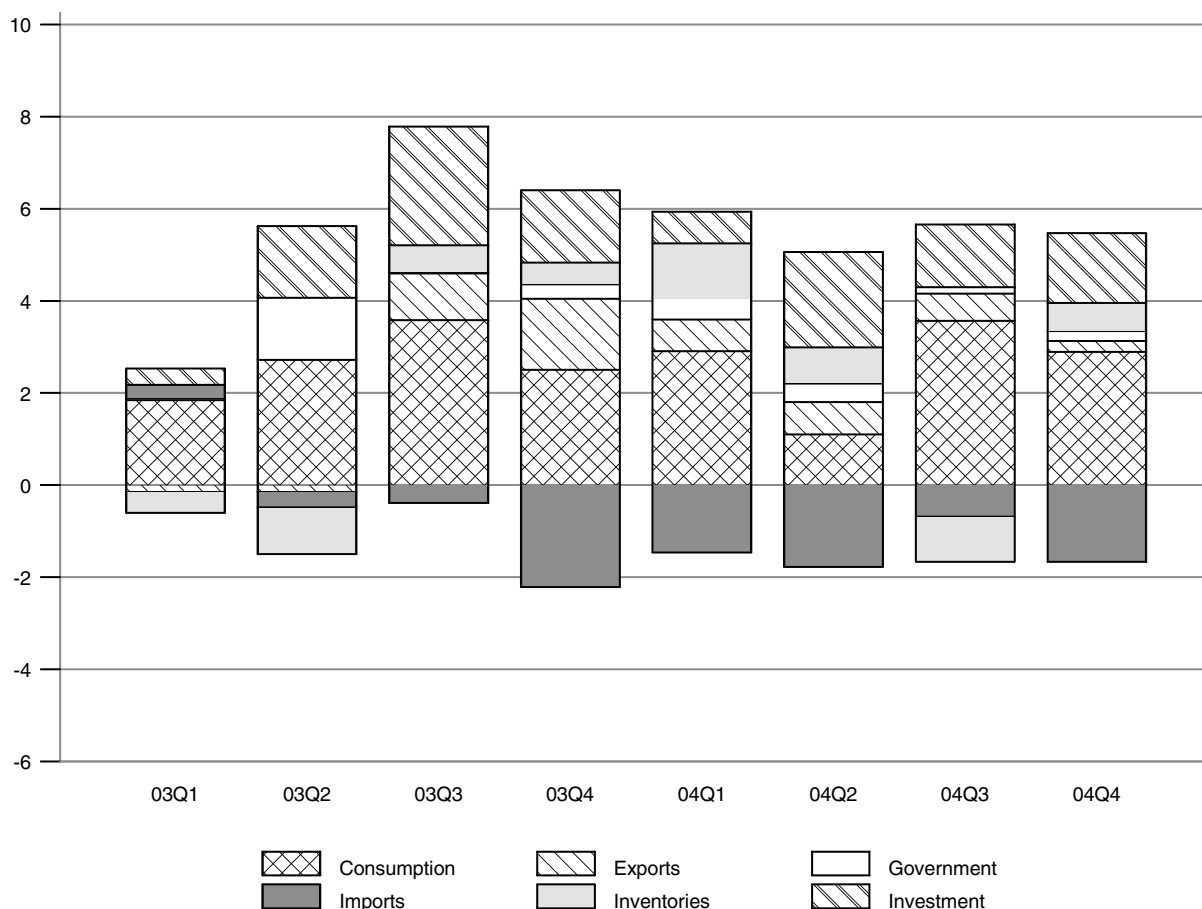


### Inventory-Sales Ratio



### Contribution of Components to Real GDP Growth

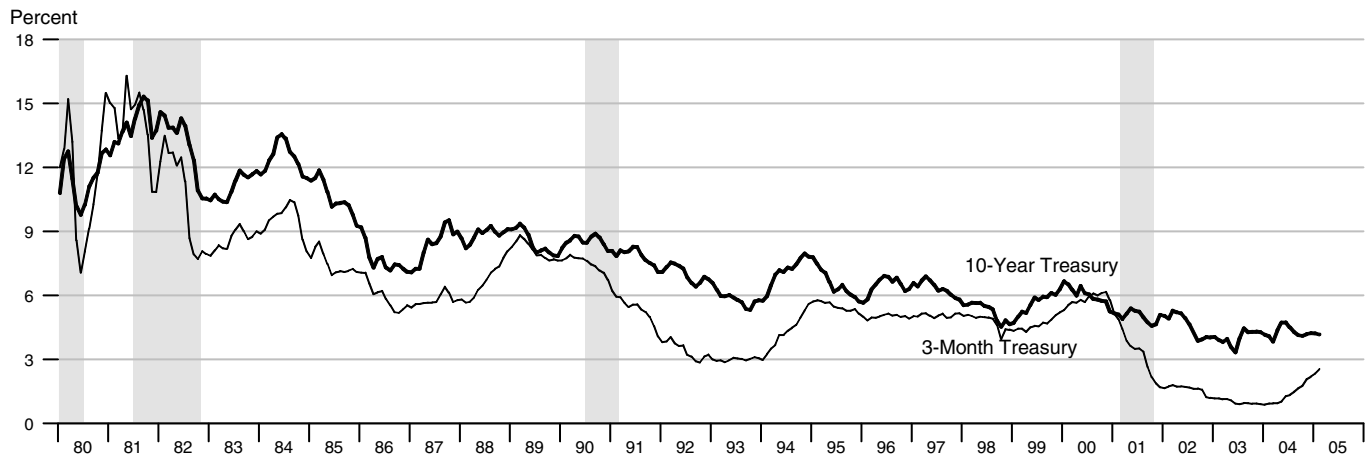
Percentage points at compounded annual rates



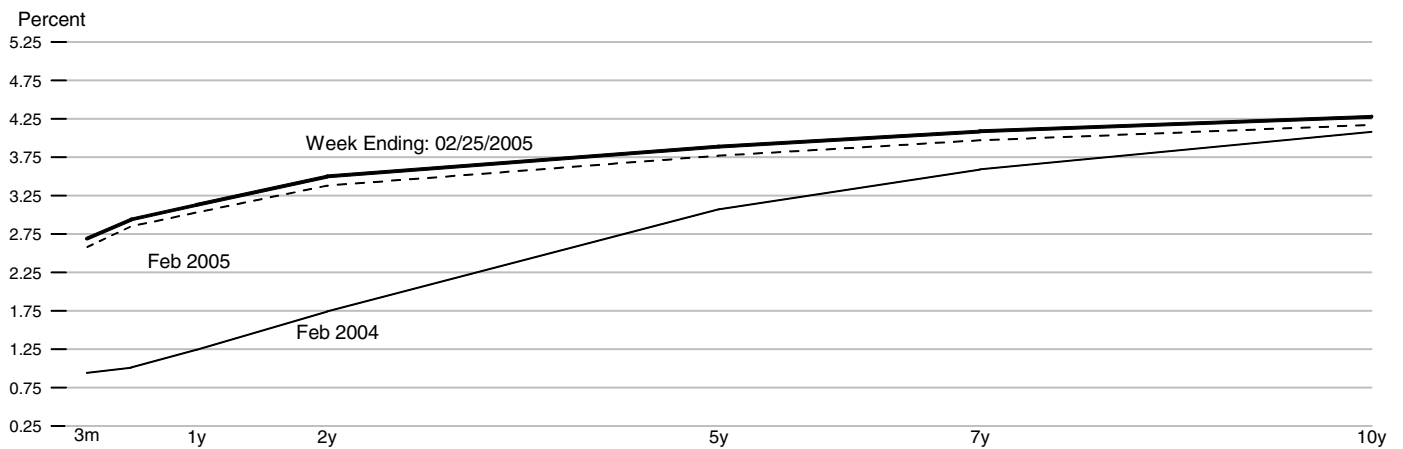
### Contributions to Real GDP Growth Rate

	2003				2004			
	1st	2nd	3rd	4th	1st	2nd	3rd	4th
<b>Final Sales</b>	2.38	5.12	6.84	3.72	3.32	2.52	4.97	3.21
<b>Consumption</b>	1.84	2.72	3.58	2.50	2.90	1.10	3.57	2.89
<b>Fixed Investment</b>	0.35	1.55	2.59	1.57	0.69	2.07	1.37	1.52
Nonresidential	-0.01	1.10	1.50	1.07	0.42	1.21	1.27	1.40
Residential	0.36	0.44	1.09	0.50	0.27	0.86	0.09	0.12
Federal	0.04	1.40	-0.23	0.33	0.48	0.18	0.33	0.12
<b>Government</b>	0.05	1.35	0.03	0.31	0.48	0.41	0.13	0.22
State and Local	0.02	-0.05	0.26	-0.02	0.00	0.23	-0.20	0.10
Imports	0.29	-0.34	-0.39	-2.22	-1.46	-1.77	-0.69	-1.67
<b>Change in Inventory</b>	-0.45	-1.01	0.57	0.47	1.17	0.78	-0.97	0.60
Exports	-0.15	-0.15	1.02	1.55	0.70	0.70	0.59	0.24
<b>Net Exports</b>	0.14	-0.50	0.64	-0.66	-0.76	-1.06	-0.10	-1.43
<b>Residual</b>	0.09	0.05	-0.10	0.02	0.02	0.01	-0.10	-0.09
<b>Real GDP Growth</b>	1.93	4.11	7.41	4.19	4.49	3.30	4.00	3.81

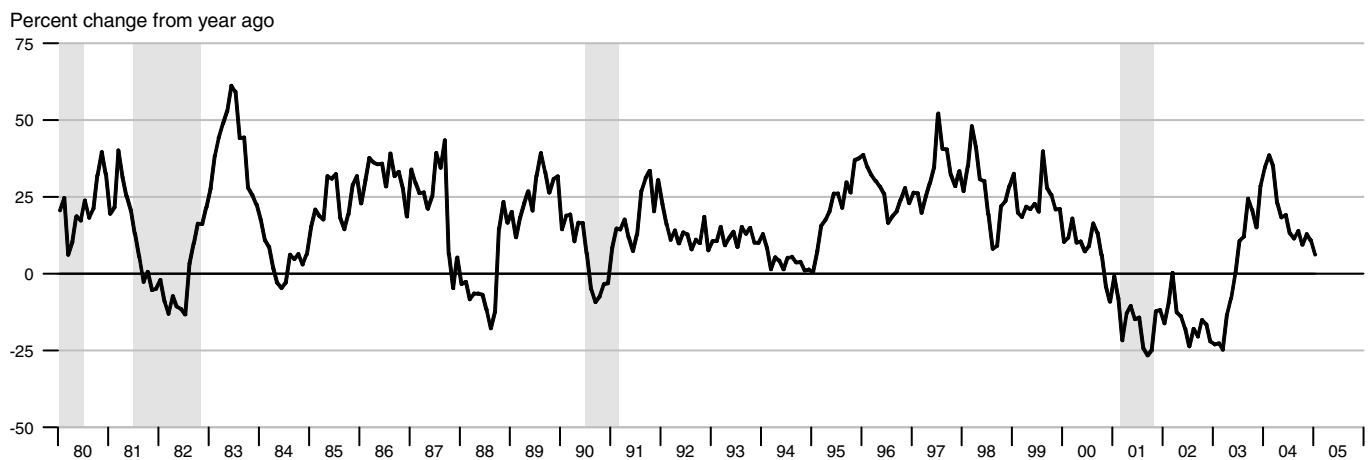
### Interest Rates



### Treasury Yield Curve

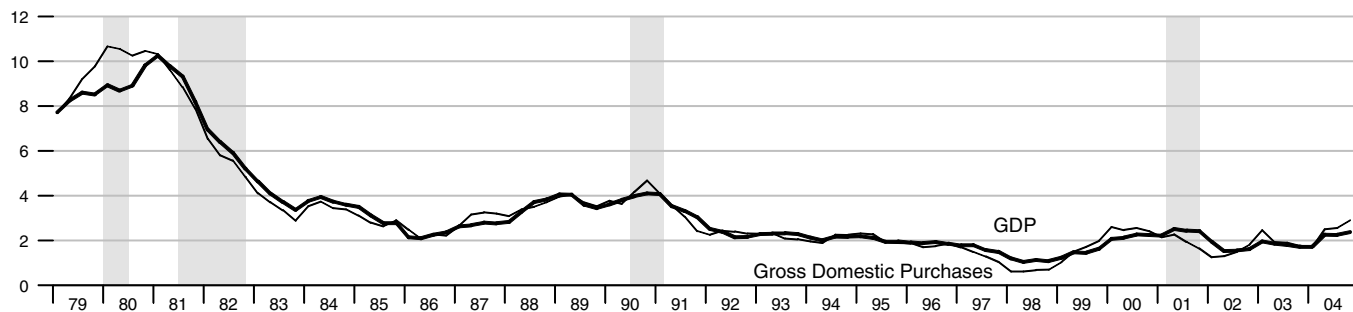


### Standard and Poor's 500 Index with Reinvested Dividends



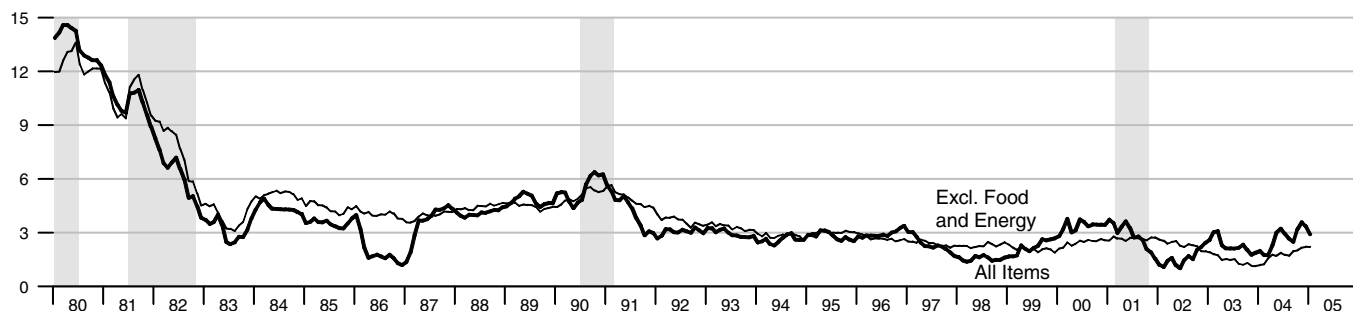
### NIPA Chain Price Indexes

Percent change from year ago



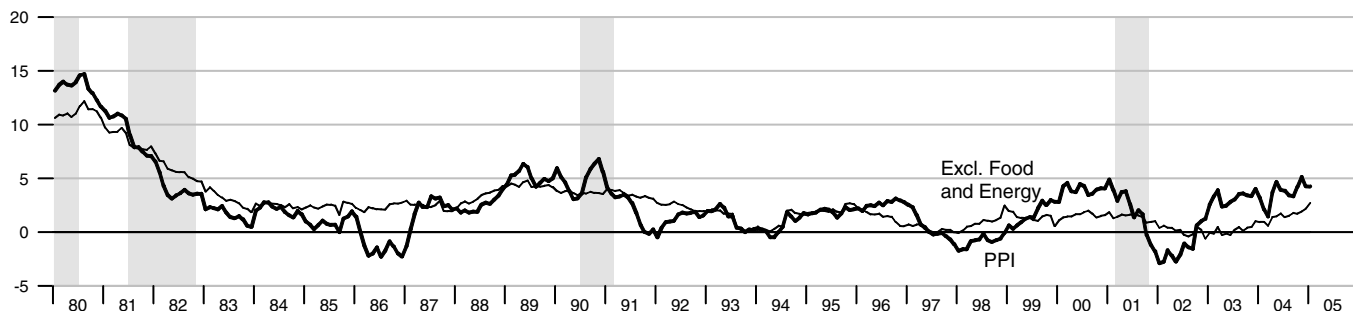
### Consumer Price Index

Percent change from year ago



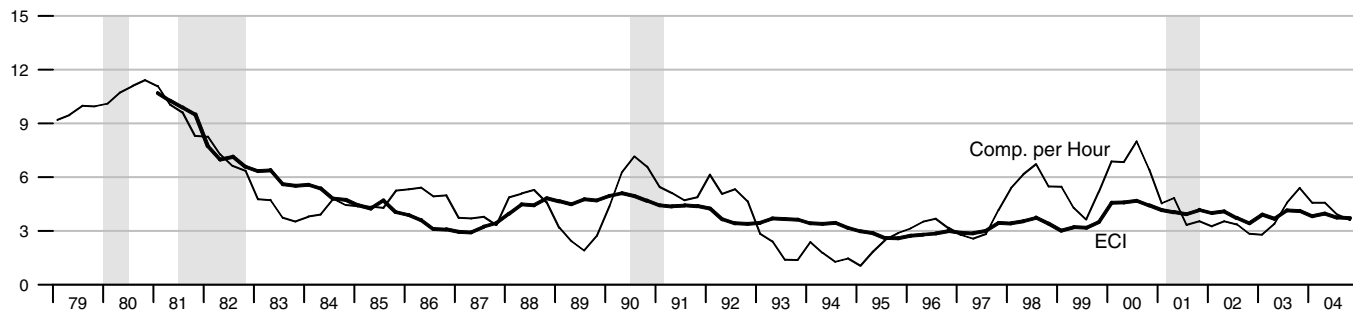
### Producer Price Index, Finished Goods

Percent change from year ago



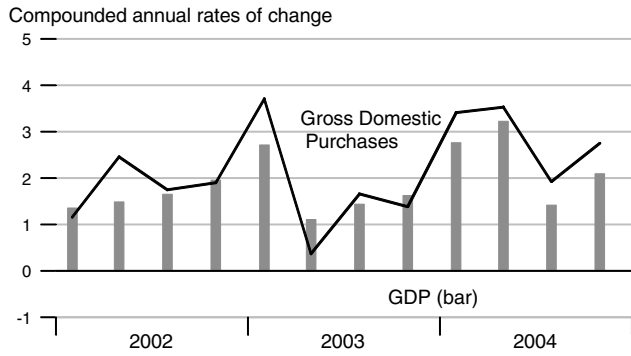
### Employment Cost Index and Compensation per Hour

Percent change from year ago

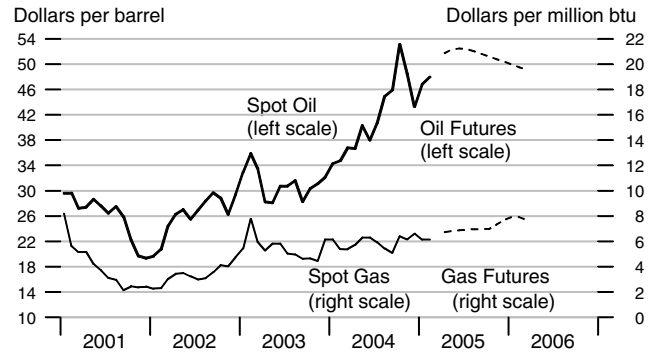




### NIPA Chain Price Indexes

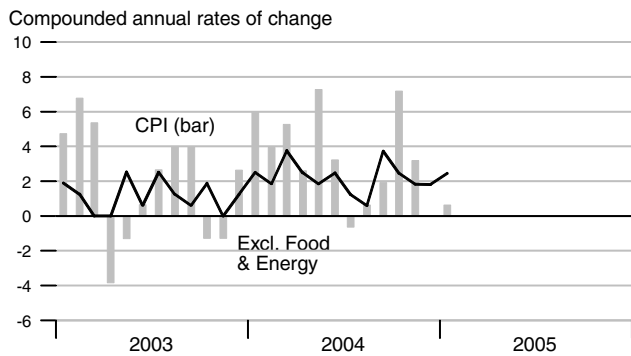


### Oil & Natural Gas Prices: Spot & Futures

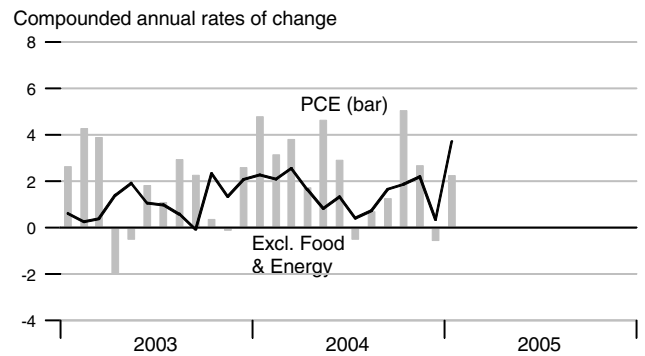


Note: Futures prices as of 02/28/2005.

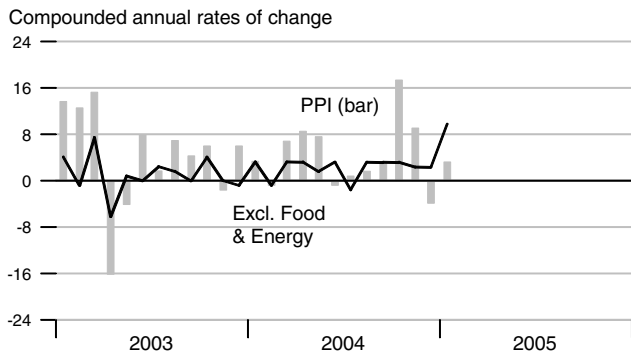
### Consumer Price Index



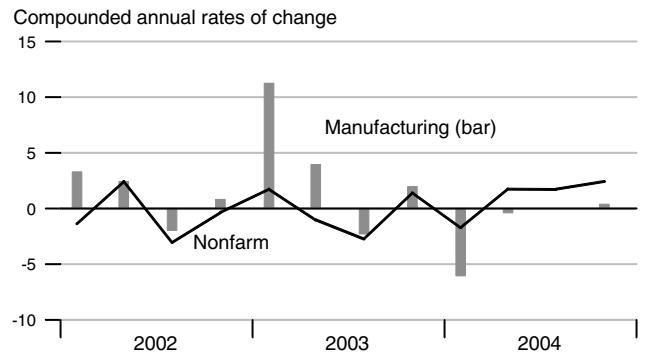
### Consumption Chain Price Index



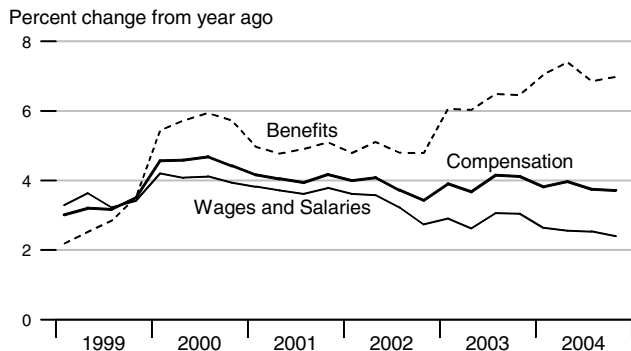
### Producer Price Index, Finished Goods



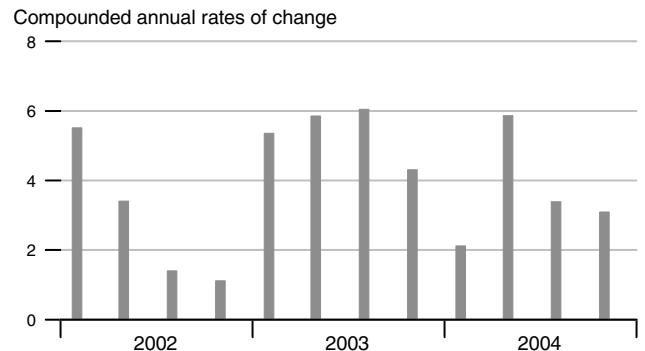
### Unit Labor Cost



### Employment Cost Index

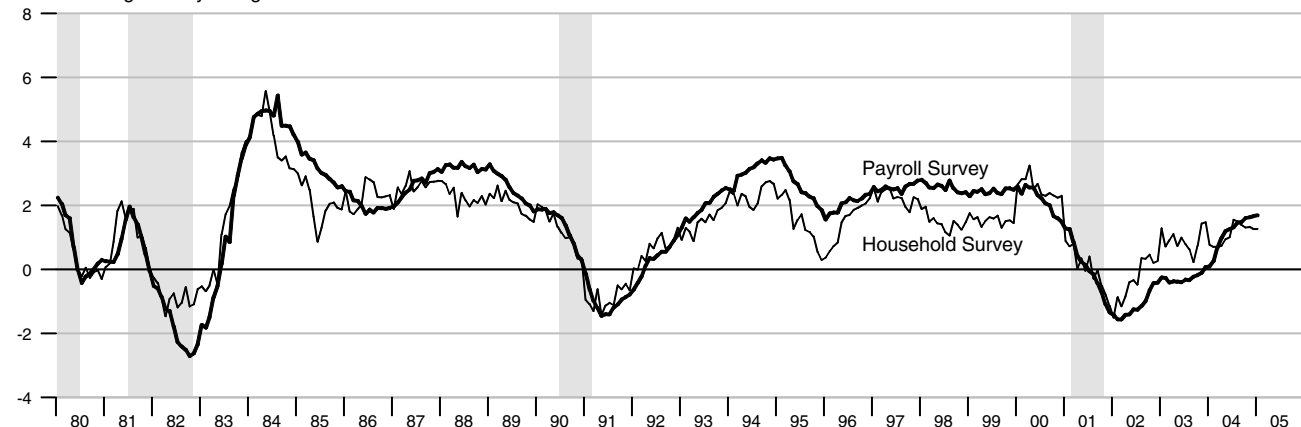


### Compensation per Hour



### Employment

Percent change from year ago

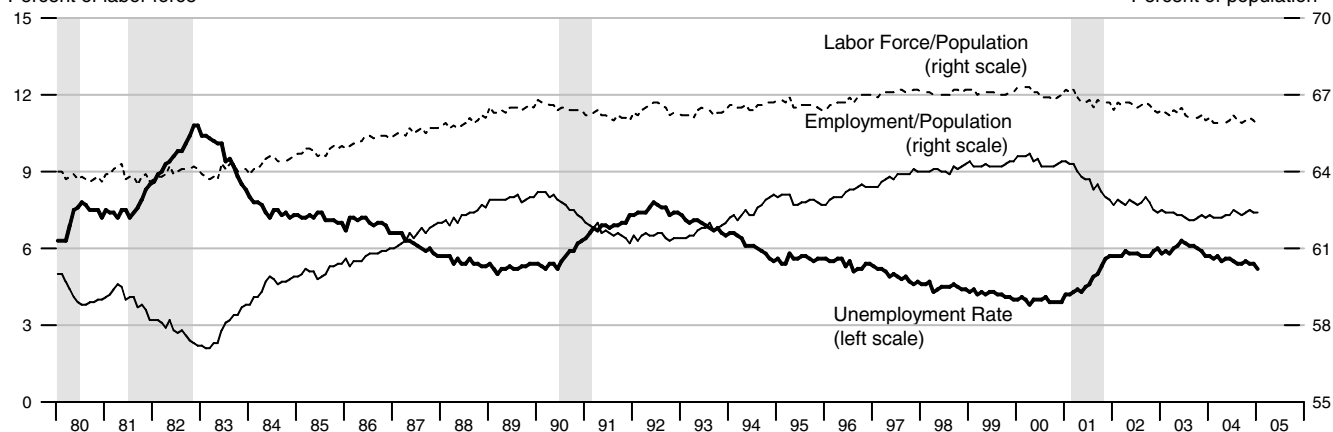


See the Notes section at the end of this publication for the Feb. 7, 2003, revisions to the Household Survey, and the June 6, 2003, revisions to the Establishment Survey.

### Unemployment, Labor Force Participation, and Employment Rates

Percent of labor force

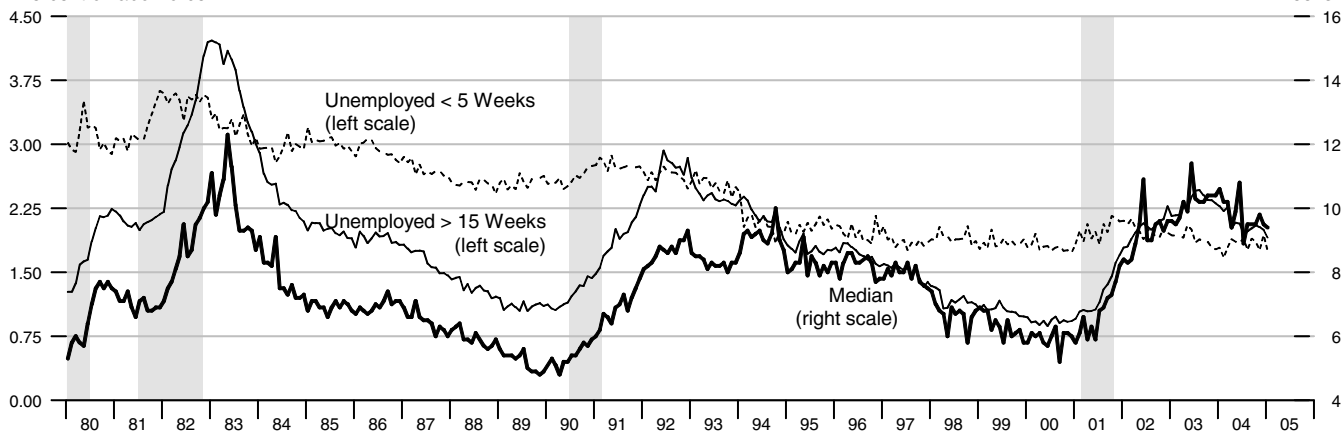
Percent of population



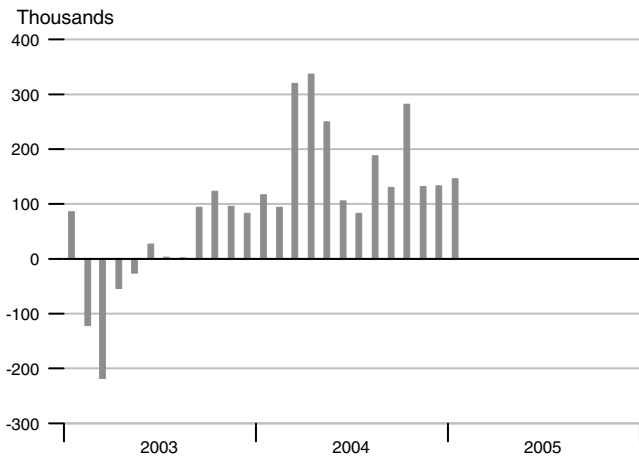
### Duration of Unemployment

Percent of labor force

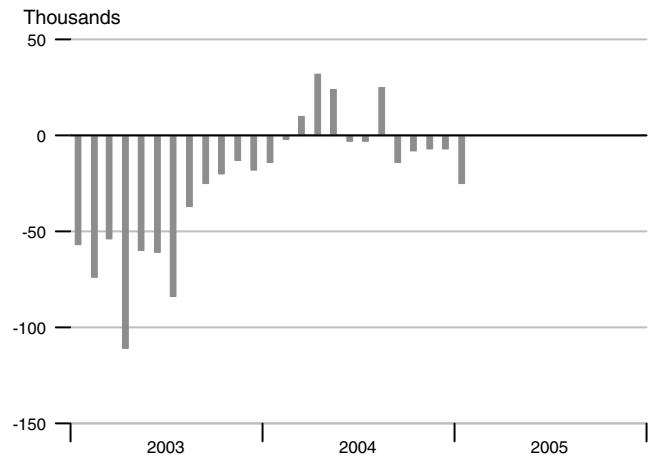
Weeks



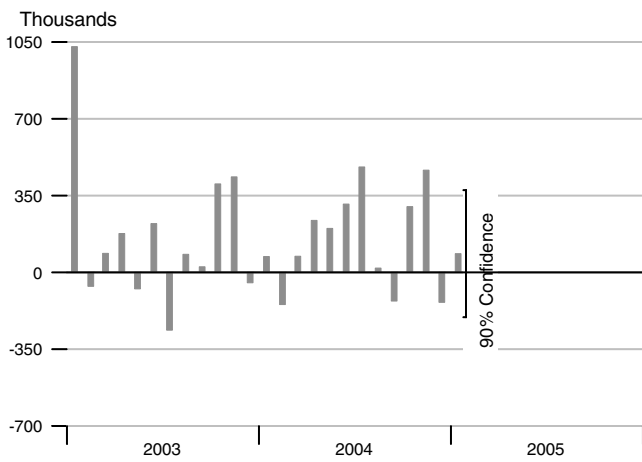
### Change in Nonfarm Payrolls



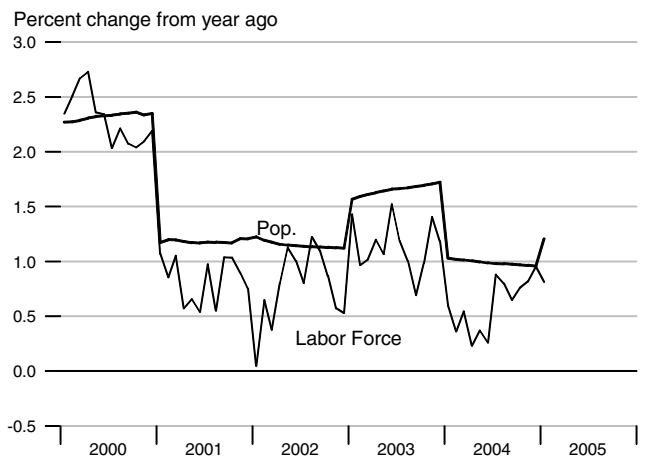
### Change in Manufacturing Payrolls



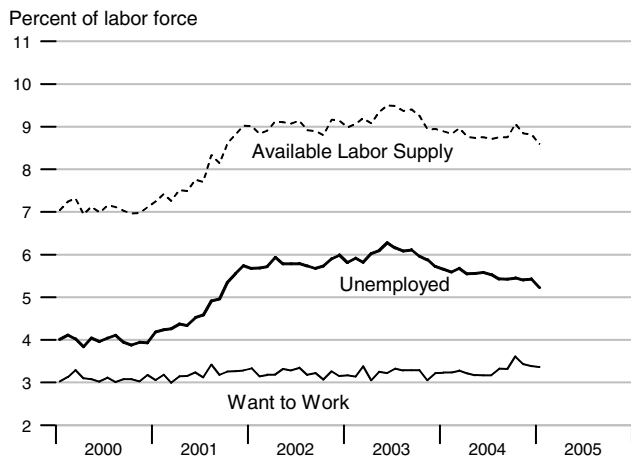
### Change in Household Employment



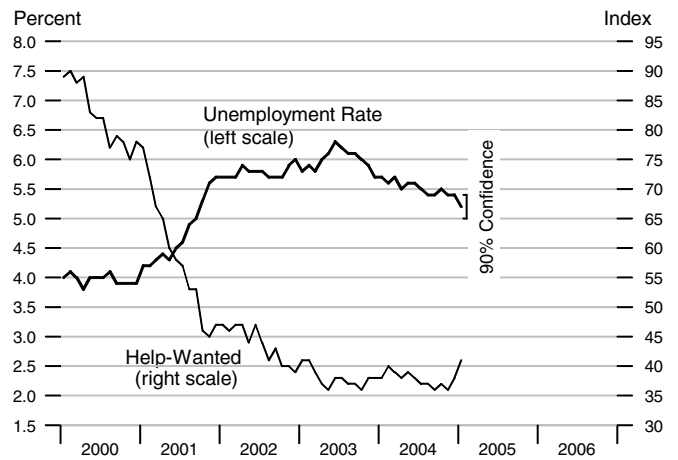
### Labor Force and Population



### Available Labor Supply and Components

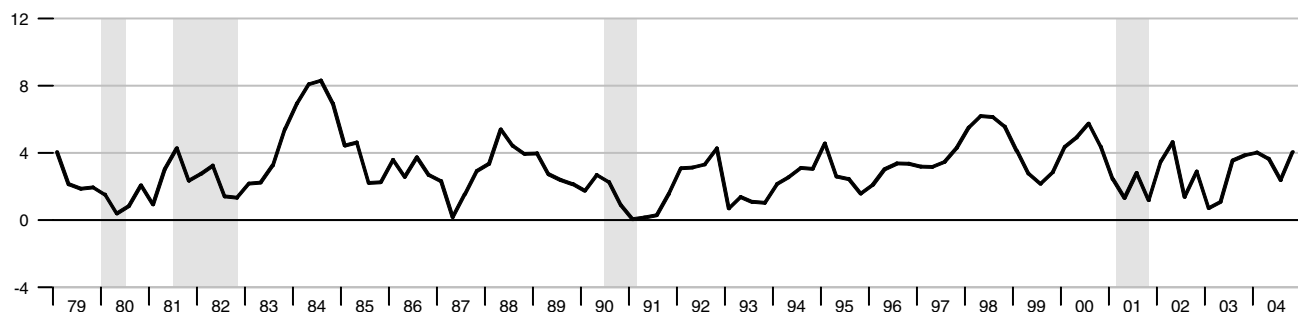


### Unemployment Rate & Help-Wanted Index



### Real Disposable Personal Income

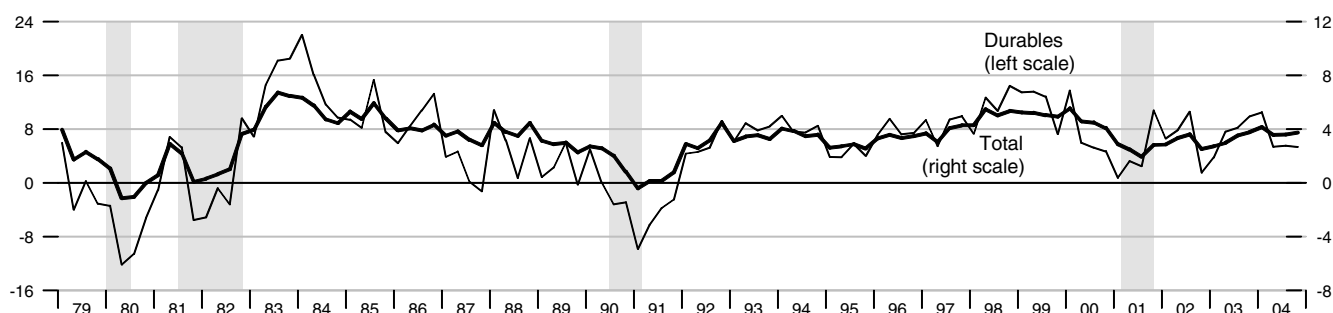
Percent change from year ago, quarterly data



### Real Consumption

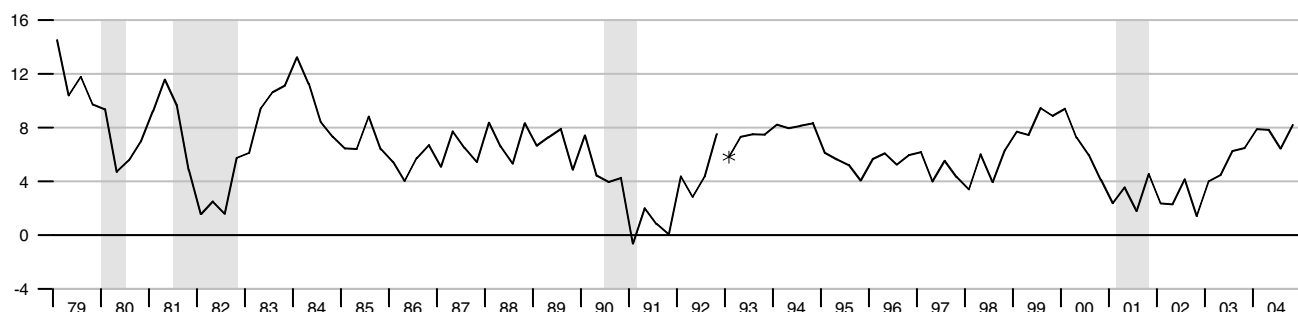
Percent change from year ago, quarterly data

Percent change from year ago, quarterly data



### Retail and Food Services Sales

Percent change from year ago, quarterly average

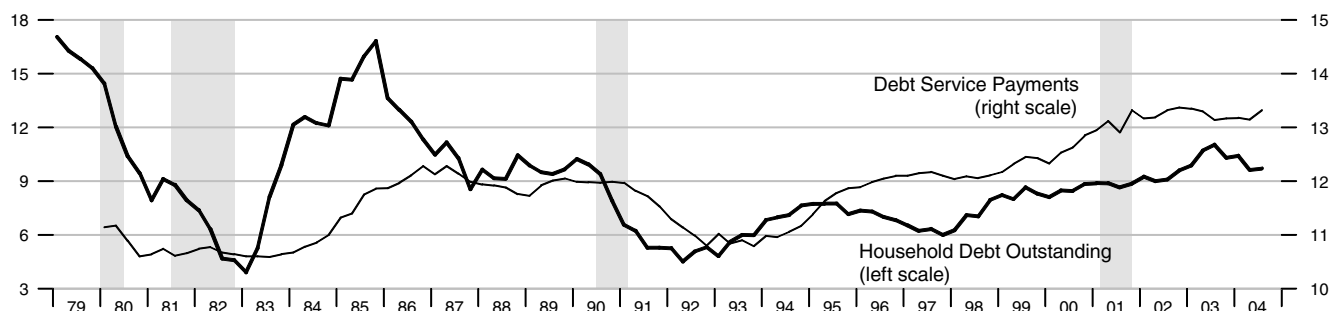


\*Data from Jan. 1992 to the present are on a NAICS basis; data prior to Jan. 1992 are on an SIC basis and are not strictly comparable (see End Note).

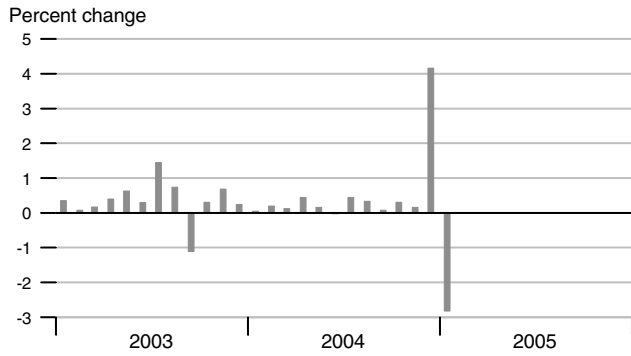
### Debt Service Payments and Household Debt Outstanding

Percent change from year ago, quarterly data

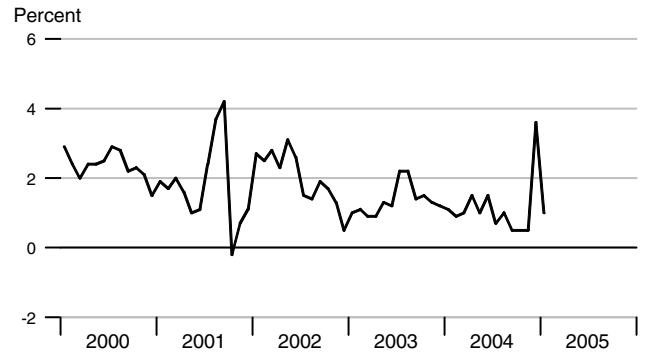
Percent of disposable personal income



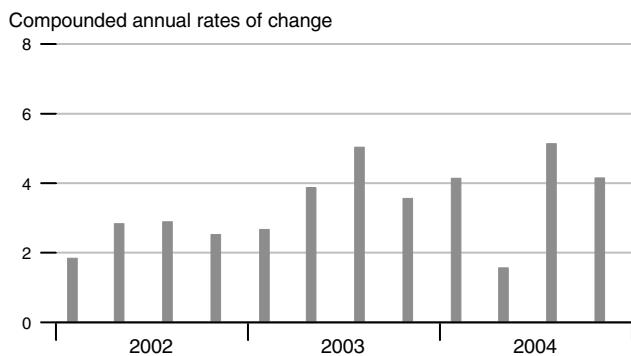
### Real Disposable Personal Income



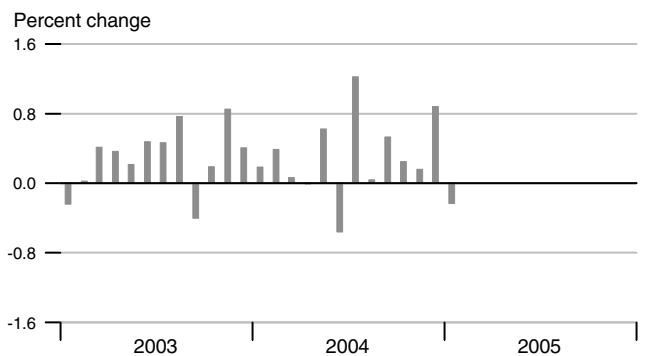
### Personal Saving Rate



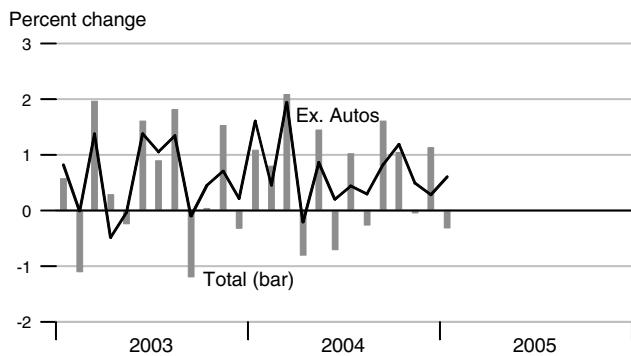
### Real Consumption



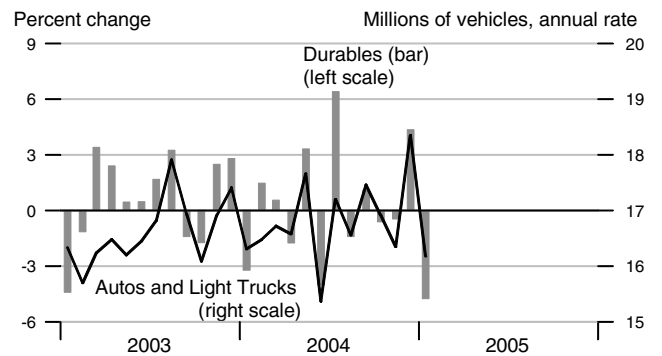
### Real Consumption



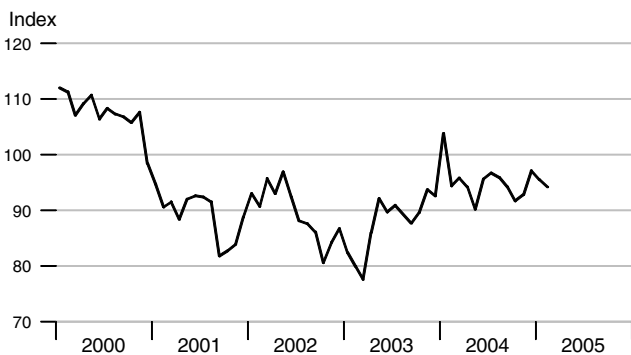
### Retail & Food Services



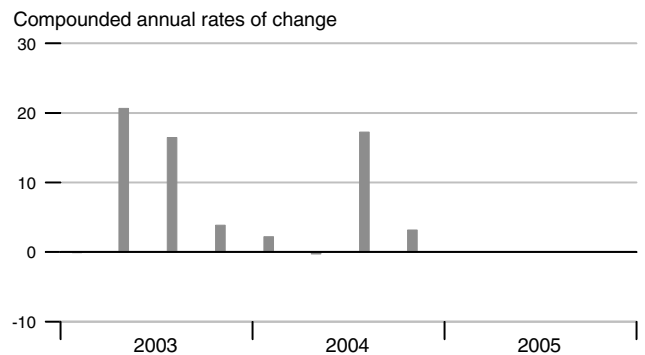
### Real Durables Consumption & Vehicle Sales



### Consumer Sentiment (U. of Michigan)

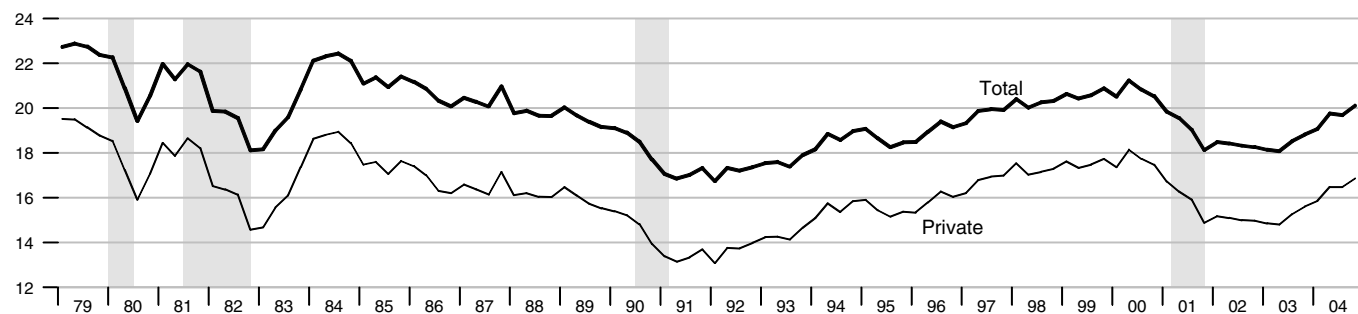


### Real Durables Consumption



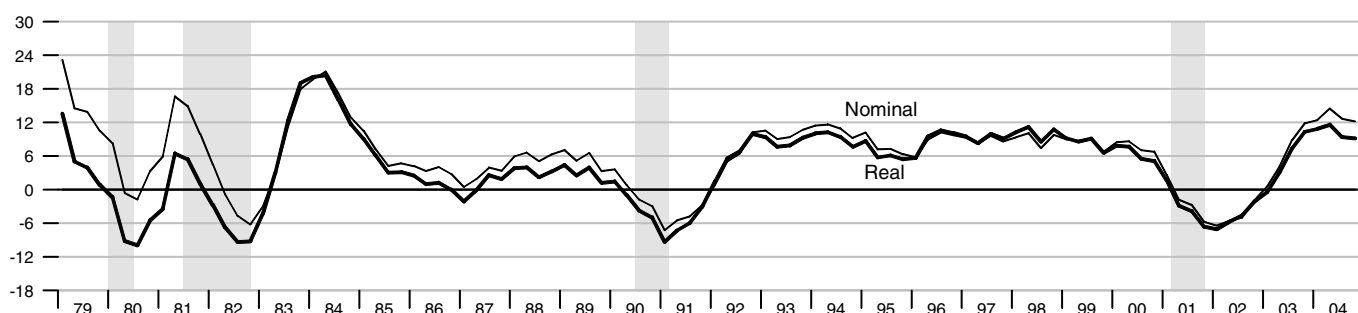
### Investment

Percent of nominal GDP



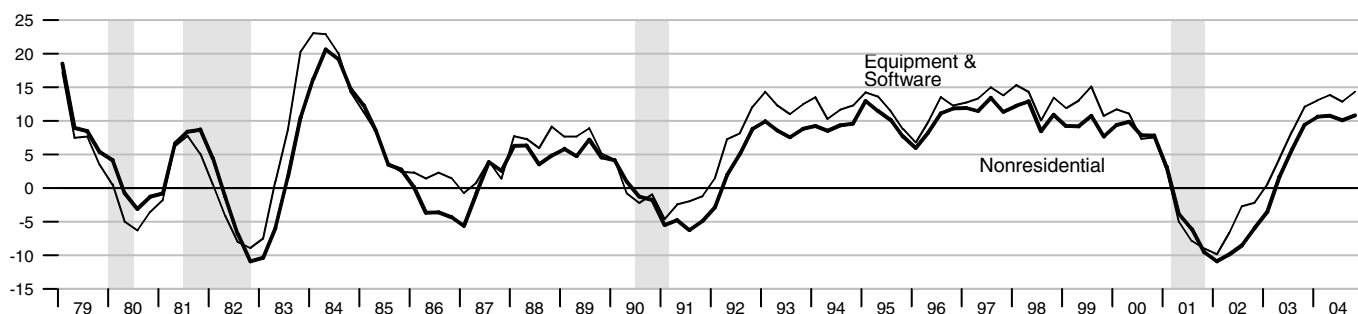
### Private Fixed Investment

Percent change from year ago



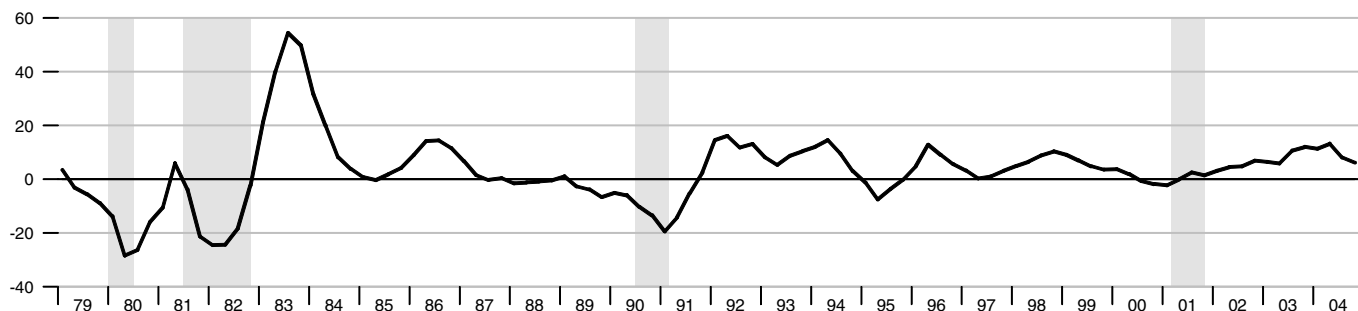
### Real Nonresidential Fixed and Equipment & Software Investment

Percent change from year ago

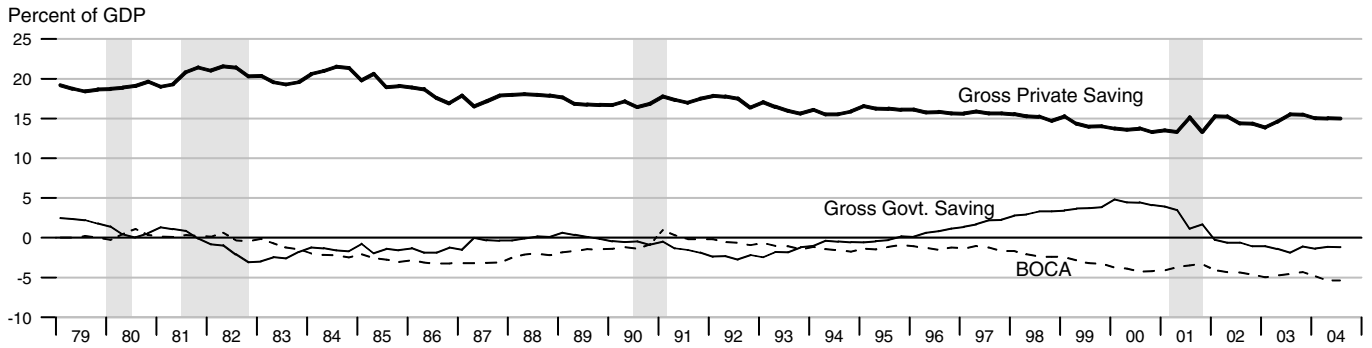


### Real Residential Fixed Investment

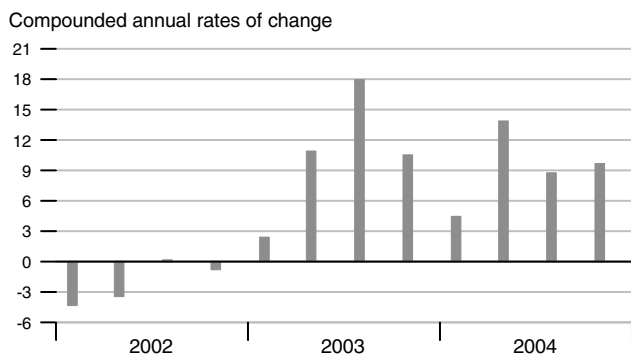
Percent change from year ago



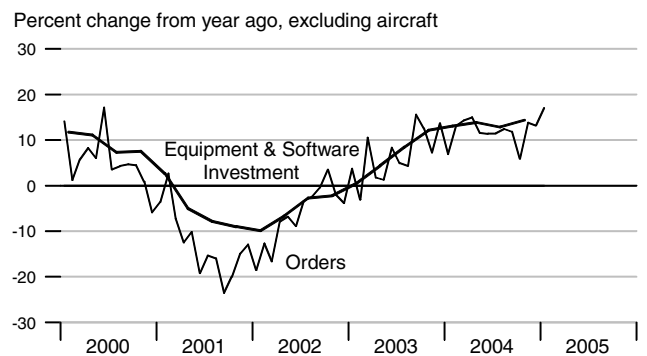
### Gross Saving Rates and Balance on Current Account (NIPA)



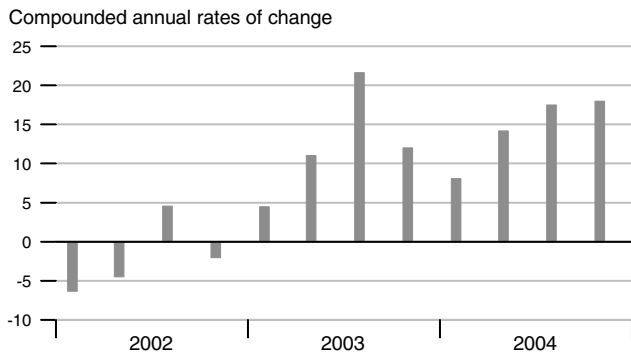
### Real Private Fixed Investment



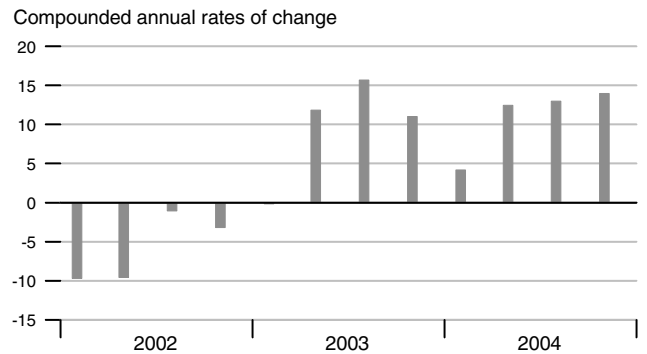
### Nondefense Capital Goods Orders



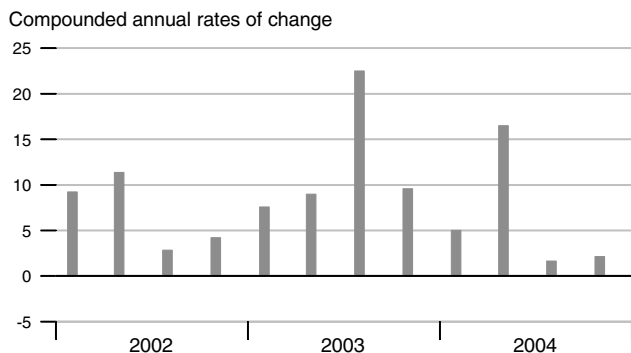
### Real Equipment & Software Investment



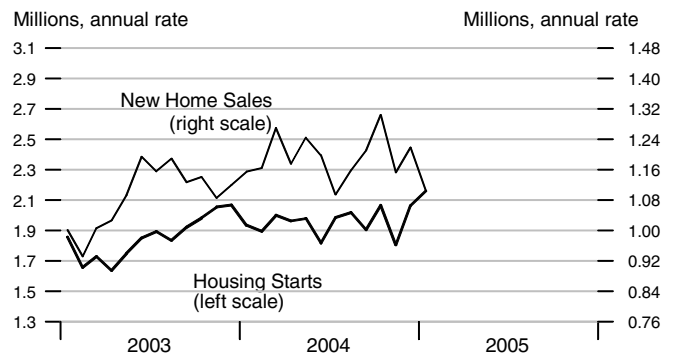
### Real Nonresidential Fixed Investment



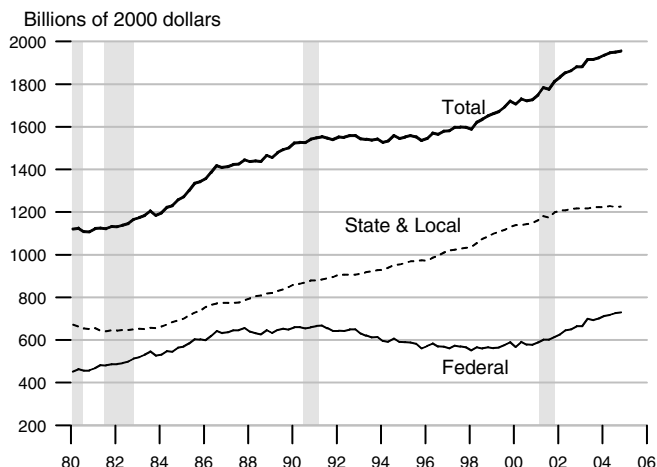
### Real Residential Fixed Investment



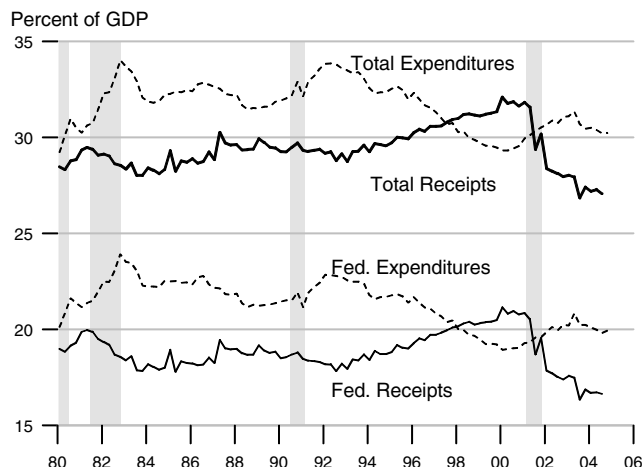
### Housing Starts and New Home Sales



Govt. Consumption and Investment



Govt. Current Receipts and Expenditures



Government Budgets

Billions of dollars

National Income Accounts

Calendar Years

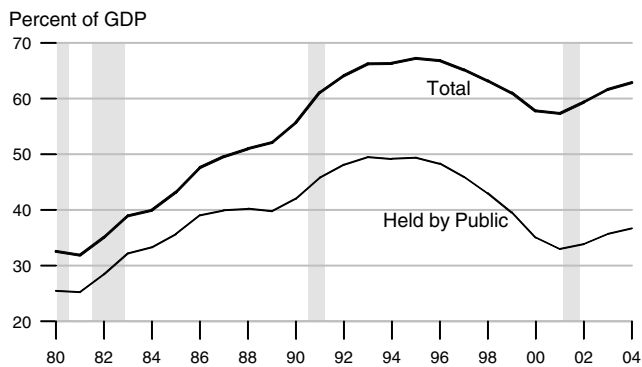
Unified Budget

Fiscal Years

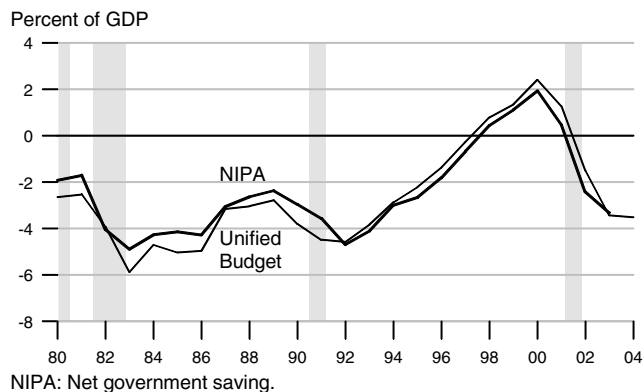
	State and Local			Federal			Federal		
	Receipts	Expenditures	Surplus or Deficit (-)	Receipts	Expenditures	Surplus or Deficit (-)	Receipts	Outlays	Surplus or Deficit (-)
1991	789.2	793.3	-4.1	1101.3	1315.0	-213.7	1055.0	1324.3	-269.3
1992	845.7	845.0	0.7	1147.2	1444.6	-297.4	1091.3	1381.6	-290.3
1993	886.9	886.0	0.9	1222.5	1496.0	-273.5	1154.4	1409.5	-255.1
1994	942.9	932.4	10.5	1320.8	1533.1	-212.3	1258.6	1461.9	-203.2
1995	990.2	978.2	12.0	1406.5	1603.5	-197.0	1351.8	1515.8	-164.0
1996	1043.3	1017.5	25.8	1524.0	1665.8	-141.8	1453.1	1560.5	-107.5
1997	1097.4	1058.3	39.1	1653.1	1708.9	-55.8	1579.3	1601.2	-21.9
1998	1163.2	1111.2	52.0	1773.8	1734.9	38.9	1721.8	1652.6	69.2
1999	1236.7	1186.3	50.4	1891.2	1787.6	103.6	1827.5	1701.9	125.5
2000	1319.5	1269.5	50.0	2053.8	1864.4	189.4	2025.2	1789.1	236.2
2001	1373.0	1368.2	4.8	2016.2	1969.5	46.7	1991.2	1863.0	128.2
2002	1411.9	1436.9	-25.0	1847.3	2101.8	-254.5	1853.2	2011.0	-157.8
2003	1494.9	1498.1	-3.2	1877.0	2241.6	-364.6	1782.3	2159.9	-377.6
2004	.	1567.9	.	.	2341.5	.	1880.1	2292.2	-412.1
2002Q1	1380.9	1409.8	-28.9	1844.6	2053.1	-208.5	412.6	509.2	-96.6
2002Q2	1404.1	1427.7	-23.6	1850.5	2102.1	-251.6	522.6	506.9	15.6
2002Q3	1423.9	1445.3	-21.4	1847.9	2103.1	-255.2	451.7	493.2	-41.5
2002Q4	1438.5	1464.8	-26.3	1846.2	2148.8	-302.6	427.3	535.6	-108.2
2003Q1	1437.7	1486.6	-48.9	1888.6	2170.2	-281.6	397.7	542.6	-144.9
2003Q2	1484.6	1490.2	-5.6	1902.5	2266.9	-364.4	527.6	544.2	-16.6
2003Q3	1511.4	1504.9	6.5	1816.4	2249.4	-433.0	429.4	536.9	-107.4
2003Q4	1545.8	1510.5	35.3	1900.6	2279.8	-379.2	440.8	570.9	-130.2
2004Q1	1550.6	1538.8	11.8	1915.3	2306.3	-391.0	409.6	580.4	-170.8
2004Q2	1583.9	1565.7	18.2	1949.1	2329.1	-380.0	549.9	575.6	-25.7
2004Q3	1574.7	1570.2	4.5	1965.8	2340.8	-375.0	479.5	565.2	-85.7
2004Q4	.	1596.8	.	.	2389.7	.	487.2	605.1	-117.9



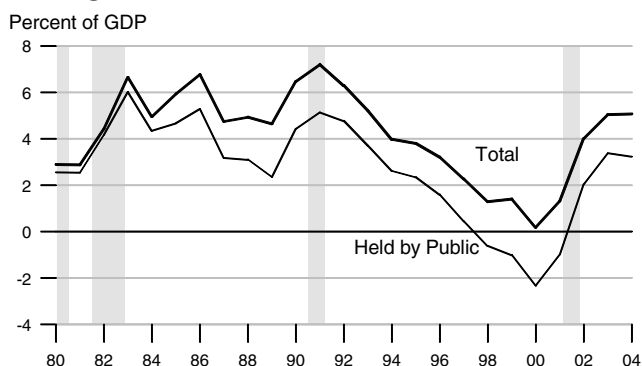
### Federal Debt



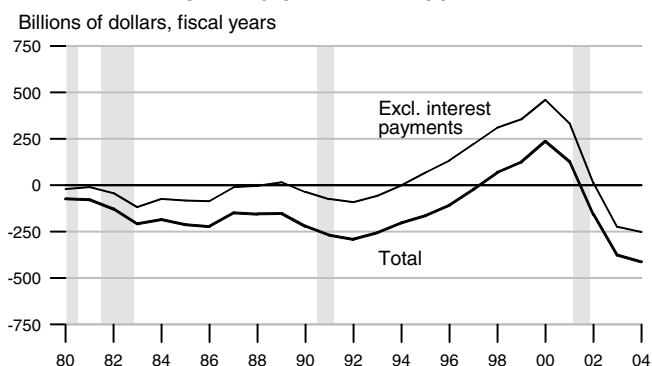
### Federal Surplus (+) / Deficit (-)



### Change in Federal Debt



### Federal Surplus (+) / Deficit (-), Unified Basis

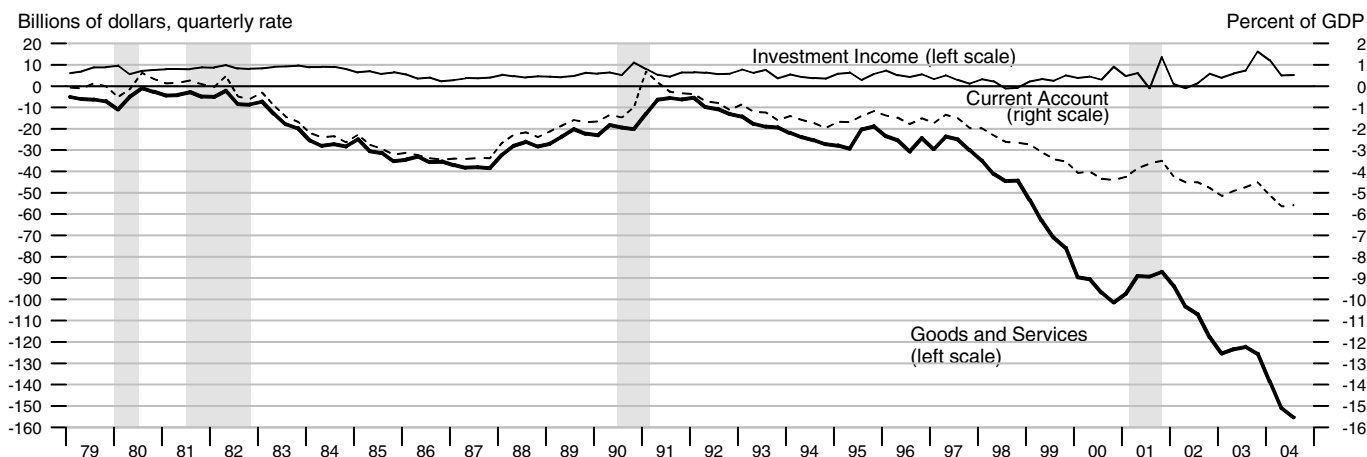


### Federal Government Debt

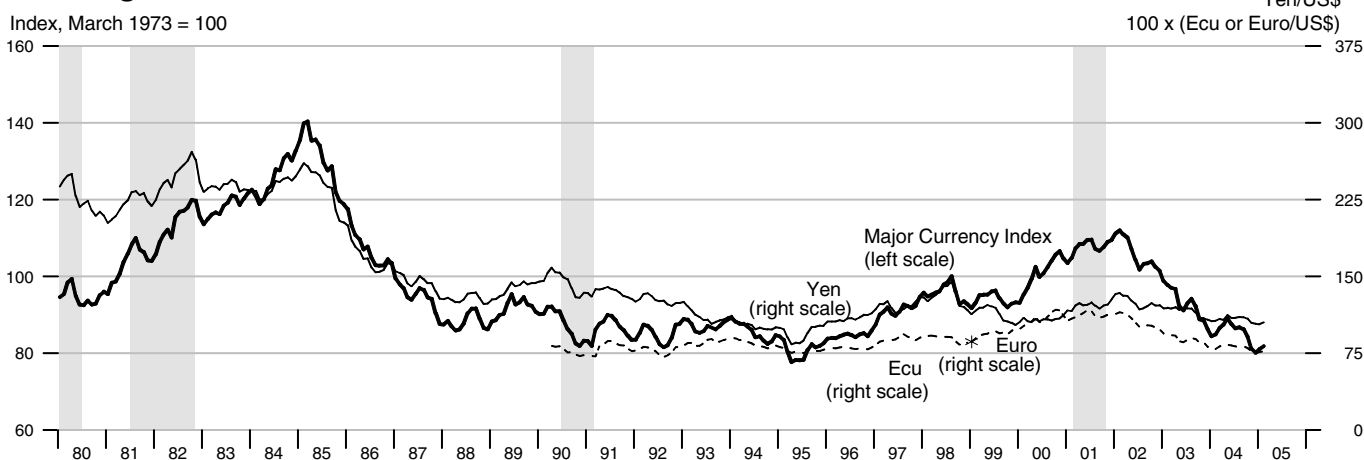
Billions of dollars, end of month or fiscal year  
Excludes Agency-issued debt

		Total Public Debt	Held by Agencies and Trusts	Held by Public		Held by Private Investors	
				Total	Federal Reserve Banks	Total	Foreign and International
2002		6228.2	2675.7	3552.6	604.2	2924.8	1200.8
2003		6783.2	2859.3	3924.0	656.1	3268.0	1455.5
2004		7379.1	3075.7	4303.4	700.3	3607.0	1861.9
2001	March	5773.7	2339.4	3434.4	523.9	2892.8	1029.9
	June	5726.8	2452.6	3274.2	535.1	2722.6	1000.5
	September	5807.5	2468.8	3338.7	534.1	2779.7	1005.5
	December	5943.4	2549.7	3393.8	551.7	2819.5	1051.2
2002	March	6006.0	2562.4	3443.7	575.4	2849.2	1067.1
	June	6126.5	2662.9	3463.5	590.7	2849.8	1135.4
	September	6228.2	2675.7	3552.6	604.2	2924.8	1200.8
	December	6405.7	2758.3	3647.4	629.4	3018.5	1246.8
2003	March	6460.8	2750.0	3710.8	641.5	3069.9	1286.5
	June	6670.1	2853.8	3816.3	652.1	3164.7	1382.8
	September	6783.2	2859.3	3924.0	656.1	3268.0	1455.5
	December	6998.0	2954.5	4044.1	666.7	3377.9	1538.1
2004	March	7131.1	2954.4	4176.7	674.1	3502.8	1704.8
	June	7274.3	3055.6	4218.7	687.4	3531.5	1799.8
	September	7379.1	3075.7	4303.4	700.3	3607.0	1861.9

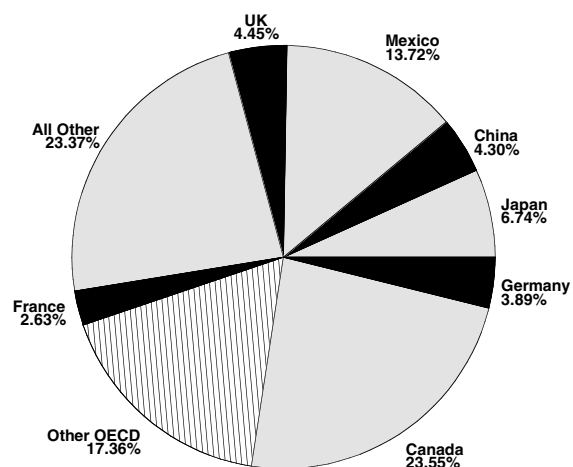
### Current Account, Trade and Investment Income Balances



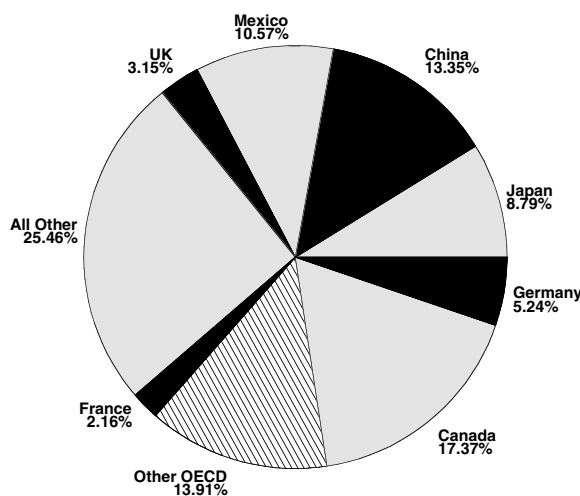
### Exchange Rates



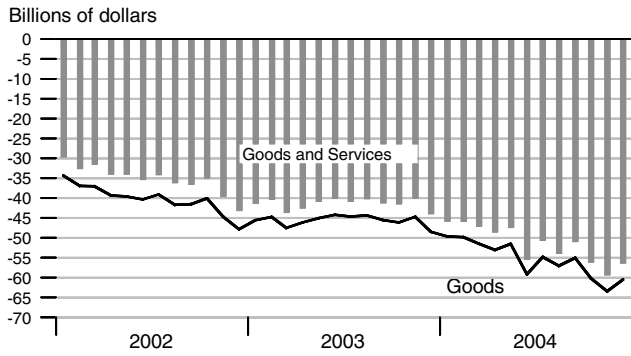
### Goods Export Shares, 2004



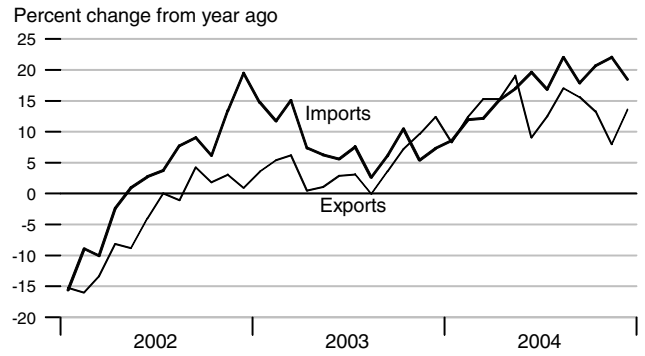
### Goods Import Shares, 2004



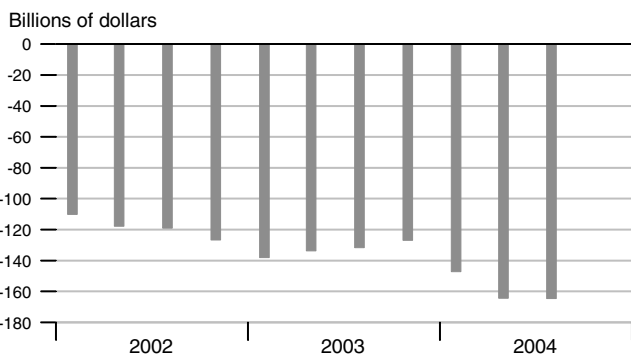
### Trade Balance



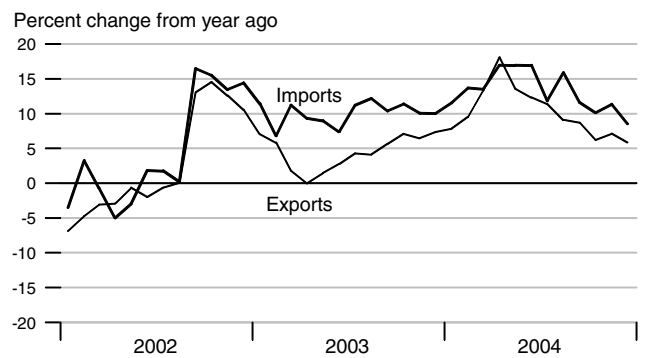
### Goods Trade



### Current Account Balance



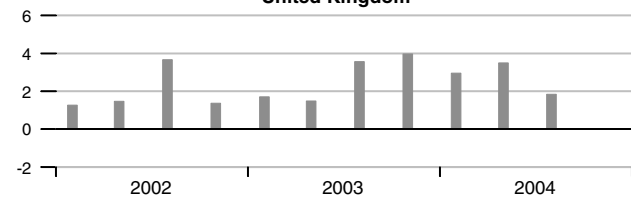
### Services Trade



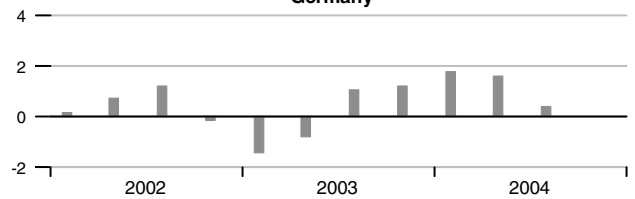
### Real GDP Growth of Major Trading Partners

Compounded annual rates of change

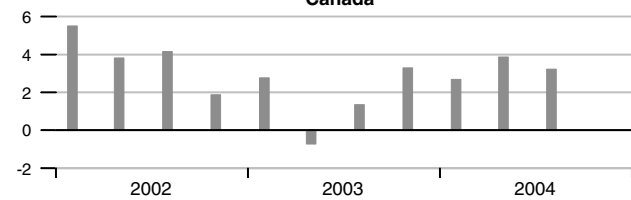
#### United Kingdom



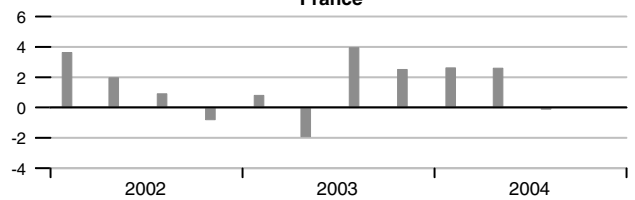
#### Germany



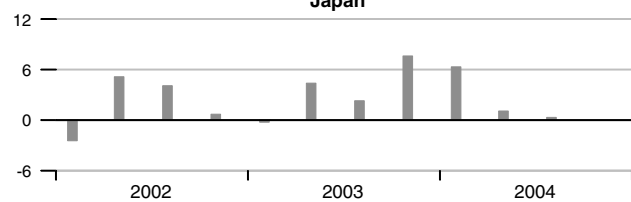
#### Canada



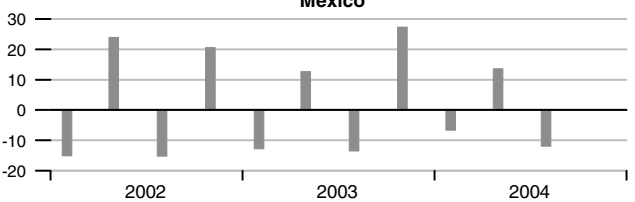
#### France



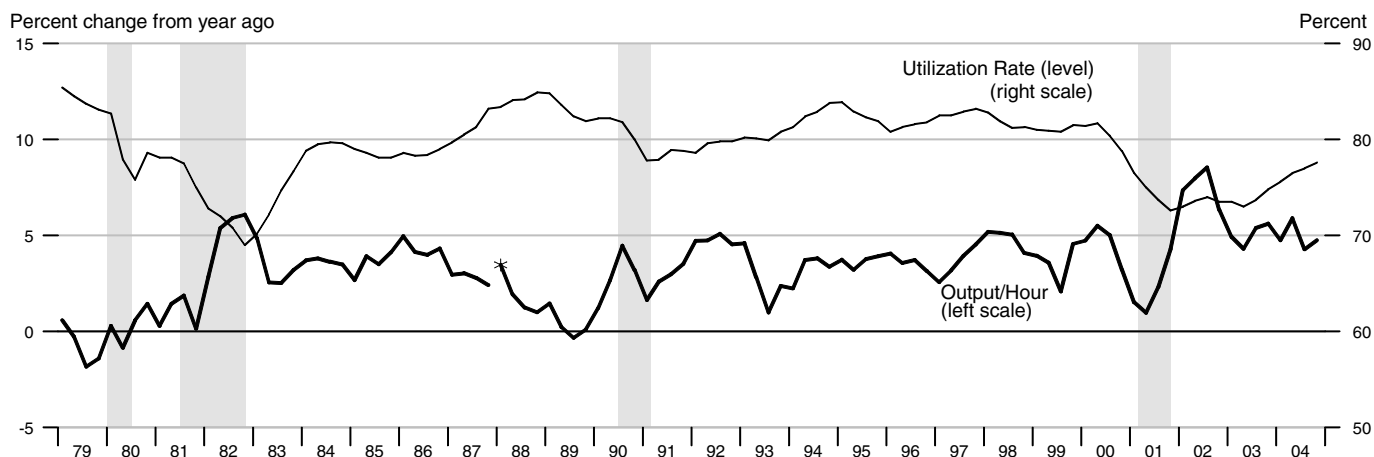
#### Japan



#### Mexico

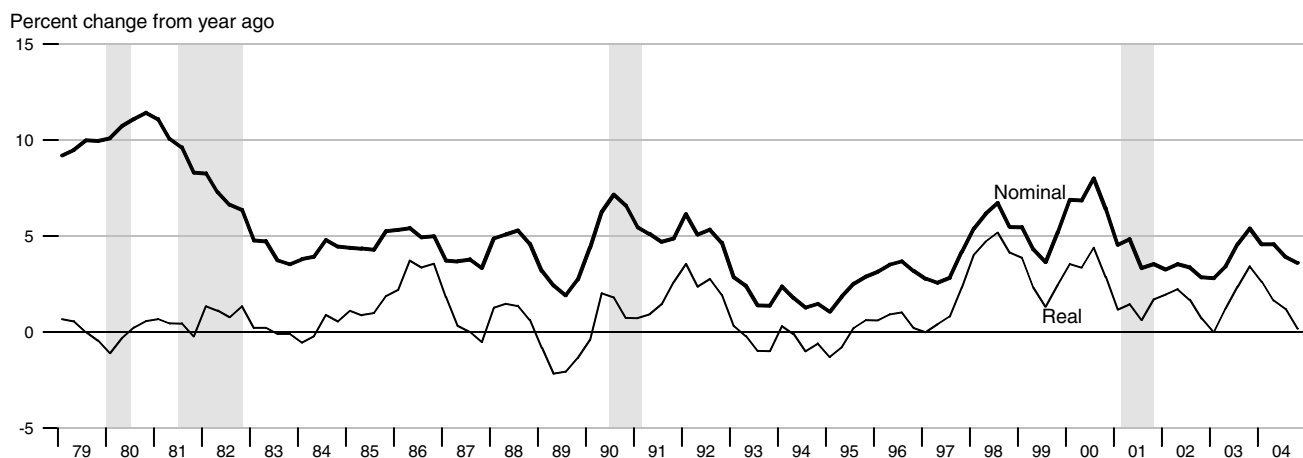


### Output per Hour and Capacity Utilization, Manufacturing

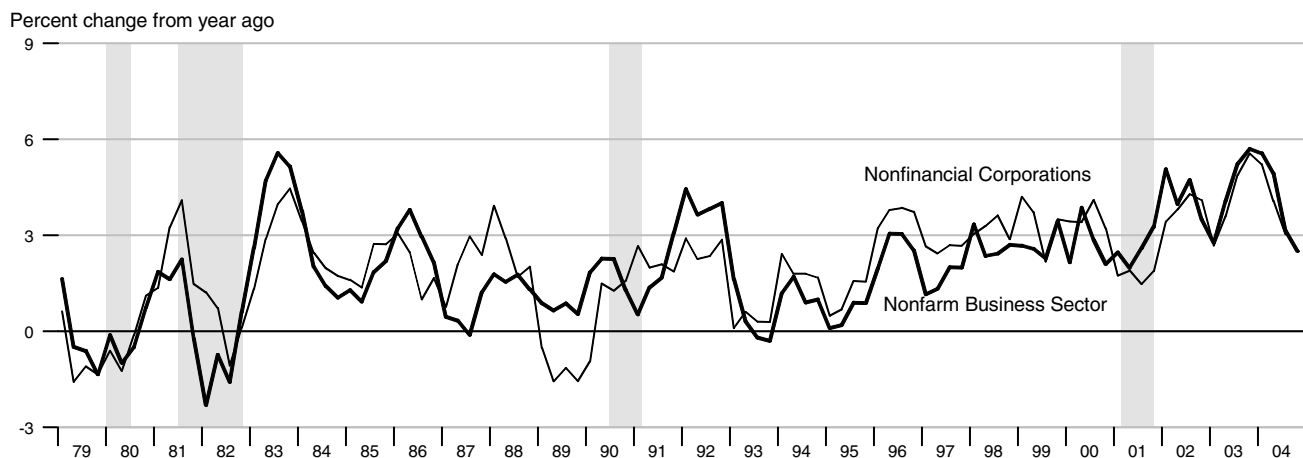


\*Data from 1987 to the present are on a NAICS basis; data prior to 1987 are on an SIC basis and are not strictly comparable (see End Note).

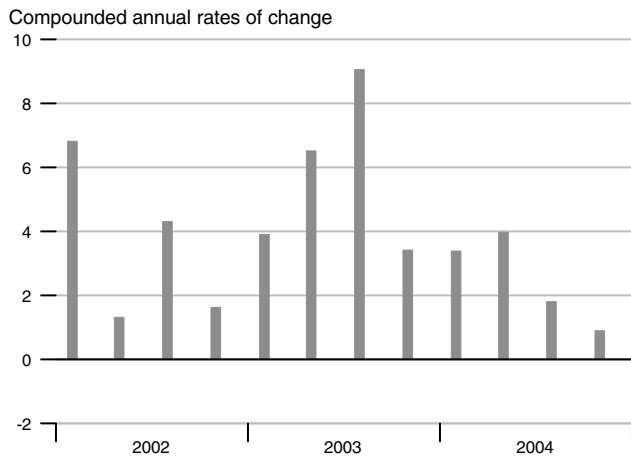
### Nonfarm Compensation per Hour



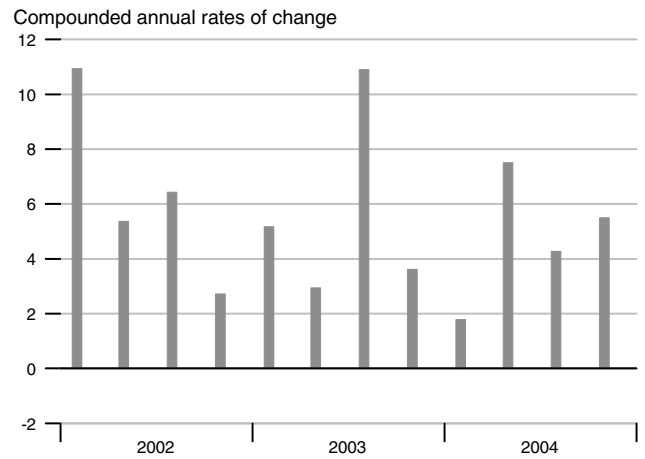
### Output per Hour, Nonfarm Business and Nonfinancial Corporations



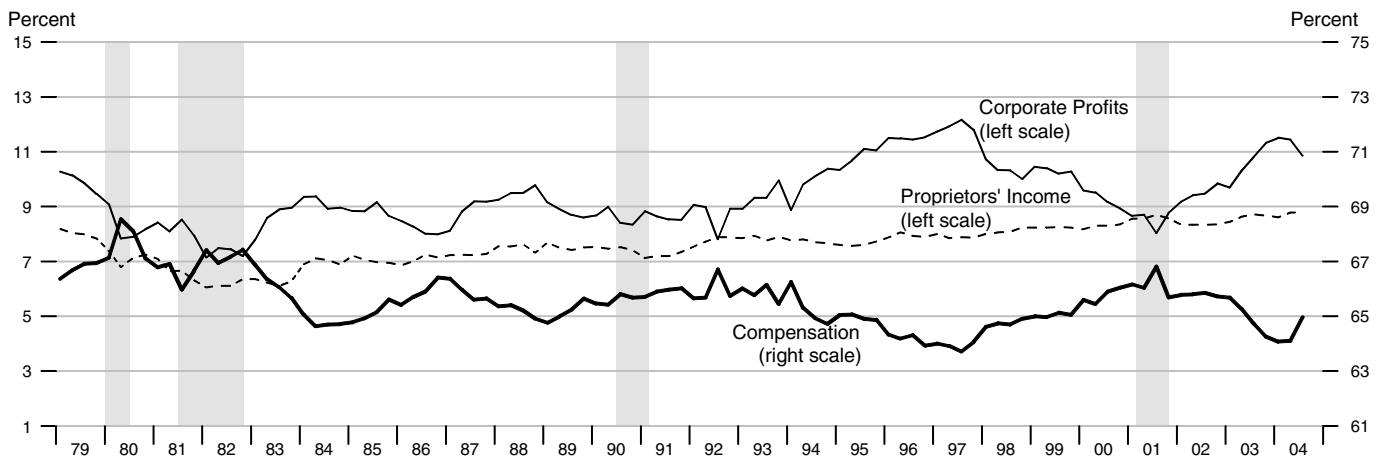
### Nonfarm Output per Hour



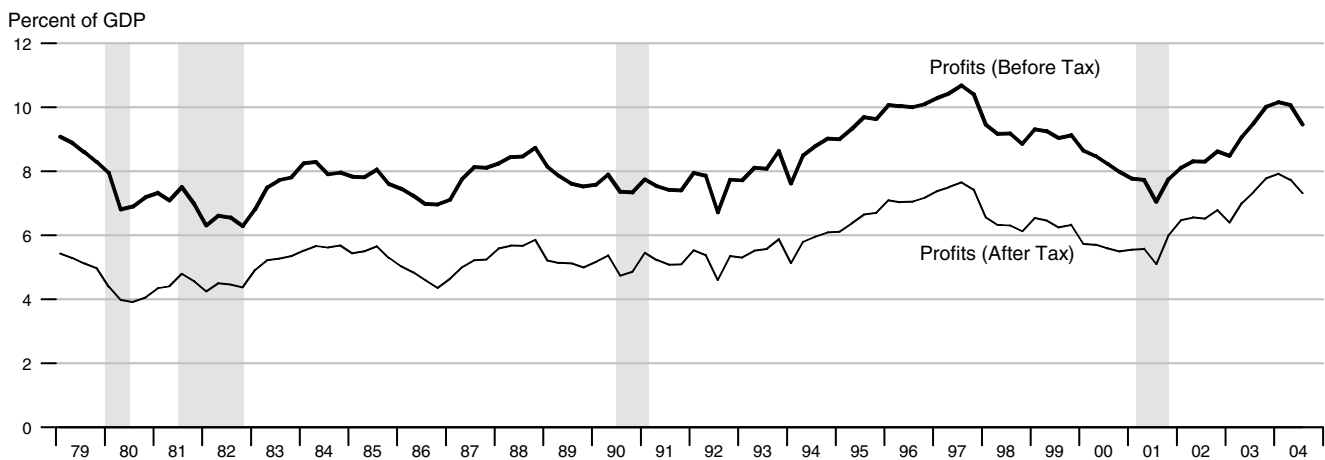
### Manufacturing Output per Hour



### Selected Component Shares of National Income



### Corporate Profits



	Nominal GDP			Real GDP			Final Sales			Change in Private Inventories			
	Billions of \$	Percent change		Billions of 2000 \$	Percent change		Billions of 2000 \$	Percent change		Billions of 2000 \$			
		Annual rate	Year ago		Annual rate	Year ago		Annual rate	Year ago	Last qtr	Year/Year ago		
2001	10128.0		3.2	9890.700		0.8	9920.900		1.6		-31.700		
2002	10487.0		3.5	10074.800		1.9	10063.200		1.4		11.700		
2003	11004.0		4.9	10381.300		3.0	10379.900		3.1		-0.800		
2004	11733.5		6.6	10841.600		4.4	10793.400		4.0		46.600		
2001	1	10021.5	2.8	4.1	9875.600	-0.5	1.9	9883.200	1.6	2.2	-7.800	47.800	
	2	10128.9	4.4	3.1	9905.900	1.2	0.6	9908.700	1.0	1.6	-2.500	22.350	
	3	10135.1	0.2	2.8	9871.100	-1.4	0.4	9899.900	-0.4	1.2	-29.900	0.825	
	4	10226.3	3.6	2.7	9910.000	1.6	0.2	9992.300	3.8	1.5	-86.700	-31.725	
2002	1	10338.2	4.4	3.2	9993.500	3.4	1.2	10000.400	0.3	1.2	-7.400	-31.625	
	2	10445.7	4.2	3.1	10052.600	2.4	1.5	10044.900	1.8	1.4	7.900	-29.025	
	3	10546.5	3.9	4.1	10117.300	2.6	2.5	10095.200	2.0	2.0	22.700	-15.875	
	4	10617.5	2.7	3.8	10135.900	0.7	2.3	10112.500	0.7	1.2	23.800	11.750	
2003	1	10744.6	4.9	3.9	10184.400	1.9	1.9	10173.300	2.4	1.7	9.600	16.000	
	2	10884.0	5.3	4.2	10287.400	4.1	2.3	10302.500	5.2	2.6	-17.600	9.625	
	3	11116.7	8.8	5.4	10472.800	7.4	3.5	10473.900	6.8	3.8	-3.500	3.075	
	4	11270.9	5.7	6.2	10580.700	4.2	4.4	10569.600	3.7	4.5	8.600	-0.725	
2004	1	11472.6	7.4	6.8	10697.500	4.5	5.0	10655.800	3.3	4.7	40.000	6.875	
	2	11657.5	6.6	7.1	10784.700	3.3	4.8	10722.300	2.5	4.1	61.100	26.550	
	3	11814.9	5.5	6.3	10891.000	4.0	4.0	10854.700	5.0	3.6	34.500	36.050	
	4	11988.9	6.0	6.4	10993.300	3.8	3.9	10940.700	3.2	3.5	51.000	46.650	
		Consumption			Durables Consumption			Private Fixed Investment			Nonresidential Fixed Investment		
		Billions of 2000 \$	Percent change		Billions of 2000 \$	Percent change		Billions of 2000 \$	Percent change		Billions of 2000 \$	Percent change	
			Annual rate	Year ago		Annual rate	Year ago		Annual rate	Year ago		Annual rate	Year ago
2001		6910.400		2.5	900.700		4.3	1629.400		-3.0	1180.500		-4.2
2002		7123.400		3.1	959.600		6.5	1548.900		-4.9	1075.600		-8.9
2003		7355.600		3.3	1030.600		7.4	1627.300		5.1	1110.800		3.3
2004		7632.300		3.8	1098.800		6.6	1793.600		10.2	1228.200		10.6
2001	1	6853.100	1.7	2.9	879.500	6.7	0.8	1678.200	-2.6	1.6	1234.400	-4.3	3.2
	2	6870.300	1.0	2.5	878.900	-0.3	3.2	1640.500	-8.7	-2.9	1190.200	-13.6	-3.9
	3	6900.500	1.8	2.0	885.600	3.1	2.5	1621.900	-4.5	-3.8	1169.300	-6.8	-6.1
	4	7017.600	7.0	2.8	958.700	37.3	10.8	1577.000	-10.6	-6.7	1128.200	-13.3	-9.6
2002	1	7049.700	1.8	2.9	937.800	-8.4	6.6	1559.600	-4.3	-7.1	1099.800	-9.7	-10.9
	2	7099.200	2.8	3.3	947.800	4.3	7.8	1545.900	-3.5	-5.8	1072.400	-9.6	-9.9
	3	7149.900	2.9	3.6	979.300	14.0	10.6	1546.600	0.2	-4.6	1069.500	-1.1	-8.5
	4	7194.600	2.5	2.5	973.400	-2.4	1.5	1543.500	-0.8	-2.1	1060.900	-3.2	-6.0
2003	1	7242.200	2.7	2.7	973.200	-0.1	3.8	1552.700	2.4	-0.4	1060.500	-0.2	-3.6
	2	7311.400	3.9	3.0	1020.000	20.7	7.6	1593.400	10.9	3.1	1090.600	11.8	1.7
	3	7401.700	5.0	3.5	1059.600	16.5	8.2	1660.600	18.0	7.4	1131.100	15.7	5.8
	4	7466.800	3.6	3.8	1069.700	3.9	9.9	1702.700	10.5	10.3	1161.000	11.0	9.4
2004	1	7543.000	4.1	4.2	1075.500	2.2	10.5	1721.400	4.5	10.9	1173.000	4.2	10.6
	2	7572.400	1.6	3.6	1074.700	-0.3	5.4	1778.300	13.9	11.6	1207.900	12.4	10.8
	3	7667.800	5.1	3.6	1118.300	17.2	5.5	1816.100	8.8	9.4	1245.300	13.0	10.1
	4	7746.200	4.2	3.7	1127.000	3.1	5.4	1858.500	9.7	9.2	1286.700	14.0	10.8

	GDP Chain Price Index			Employment Cost Index			ECI: Wages			ECI: Benefits			
	Index	Percent change		Index	Percent change		Index	Percent change		Index	Percent change		
		Annual rate	Year ago		Annual rate	Year ago		Annual rate	Year ago		Annual rate	Year ago	
2001	102.402		2.4	155.0		4.1	151.4		3.7	163.7		4.9	
2002	104.097		1.7	160.9		3.8	156.4		3.3	171.7		4.9	
2003	106.003		1.8	167.3		4.0	161.0		2.9	182.5		6.3	
2004	108.287		2.2	173.7		3.8	165.0		2.5	195.4		7.1	
2001	1	101.507	3.3	2.2	152.7	4.3	4.2	149.4	4.1	3.8	160.7	4.6	5.0
	2	102.290	3.1	2.5	154.2	4.0	4.0	150.8	3.8	3.7	162.5	4.6	4.8
	3	102.690	1.6	2.4	155.7	3.9	3.9	152.0	3.2	3.6	164.7	5.5	4.9
	4	103.122	1.7	2.4	157.4	4.4	4.2	153.5	4.0	3.8	167.0	5.7	5.1
2002	1	103.470	1.4	1.9	158.8	3.6	4.0	154.8	3.4	3.6	168.4	3.4	4.8
	2	103.853	1.5	1.5	160.5	4.4	4.1	156.2	3.7	3.6	170.8	5.8	5.1
	3	104.280	1.7	1.5	161.5	2.5	3.7	156.9	1.8	3.2	172.6	4.3	4.8
	4	104.786	2.0	1.6	162.8	3.3	3.4	157.7	2.1	2.7	175.0	5.7	4.8
2003	1	105.490	2.7	2.0	165.0	5.5	3.9	159.3	4.1	2.9	178.6	8.5	6.1
	2	105.780	1.1	1.9	166.4	3.4	3.7	160.3	2.5	2.6	181.1	5.7	6.0
	3	106.158	1.4	1.8	168.2	4.4	4.1	161.7	3.5	3.1	183.8	6.1	6.5
	4	106.586	1.6	1.7	169.5	3.1	4.1	162.5	2.0	3.0	186.3	5.6	6.5
2004	1	107.314	2.8	1.7	171.3	4.3	3.8	163.5	2.5	2.6	191.2	10.9	7.1
	2	108.169	3.2	2.3	173.0	4.0	4.0	164.4	2.2	2.6	194.5	7.1	7.4
	3	108.551	1.4	2.3	174.5	3.5	3.7	165.8	3.5	2.5	196.4	4.0	6.9
	4	109.115	2.1	2.4	175.8	3.0	3.7	166.4	1.5	2.4	199.3	6.0	7.0
		Exports			Imports			Nonfarm Output per Hour			Nonfarm Compensation per Hour		
		Billions of 2000 \$	Percent change		Billions of 2000 \$	Percent change		Index	Percent change		Index	Percent change	
			Annual rate	Year ago		Annual rate	Year ago		Annual rate	Year ago		Annual rate	Year ago
2001		1036.700		-5.4	1435.800		-2.7	118.3		2.4	139.3		4.0
2002		1012.300		-2.4	1484.400		3.4	123.5		4.4	143.8		3.2
2003		1031.800		1.9	1550.300		4.4	129.0		4.5	149.7		4.1
2004		1119.800		8.5	1704.000		9.9	134.2		4.0	156.0		4.2
2001	1	1097.200	-5.3	3.4	1495.400	-3.7	5.9	116.5	-0.3	2.5	138.1	6.6	4.5
	2	1060.600	-12.7	-2.9	1445.800	-12.6	-1.4	118.1	5.6	2.0	138.9	2.3	4.8
	3	1008.700	-18.2	-9.9	1407.100	-10.3	-7.2	118.5	1.4	2.6	139.6	2.0	3.3
	4	980.300	-10.8	-11.9	1394.900	-3.4	-7.6	120.4	6.6	3.3	140.7	3.2	3.5
2002	1	991.600	4.7	-9.6	1436.500	12.5	-3.9	122.4	6.8	5.1	142.6	5.5	3.3
	2	1017.800	11.0	-4.0	1475.900	11.4	2.1	122.8	1.3	4.0	143.8	3.4	3.5
	3	1025.500	3.1	1.7	1495.300	5.4	6.3	124.1	4.3	4.7	144.3	1.4	3.4
	4	1014.500	-4.2	3.5	1529.800	9.6	9.7	124.6	1.6	3.5	144.7	1.1	2.8
2003	1	1010.600	-1.5	1.9	1522.300	-1.9	6.0	125.8	3.9	2.8	146.6	5.4	2.8
	2	1006.500	-1.6	-1.1	1531.700	2.5	3.8	127.8	6.5	4.1	148.7	5.9	3.4
	3	1033.800	11.3	0.8	1542.500	2.9	3.2	130.6	9.1	5.2	150.9	6.1	4.6
	4	1076.200	17.4	6.1	1604.500	17.1	4.9	131.7	3.4	5.7	152.5	4.3	5.4
2004	1	1095.400	7.3	8.4	1645.500	10.6	8.1	132.8	3.4	5.6	153.3	2.1	4.6
	2	1114.800	7.3	10.8	1695.100	12.6	10.7	134.1	4.0	4.9	155.5	5.9	4.6
	3	1131.100	6.0	9.4	1714.300	4.6	11.1	134.7	1.8	3.1	156.8	3.4	3.9
	4	1137.800	2.4	5.7	1761.200	11.4	9.8	135.0	0.9	2.5	158.0	3.1	3.6

		Household Survey Employment				Nonfarm Payroll Employment				Nonfarm Aggregate Hours			
		Thousands	Change	Percent change		Thousands	Change	Percent change		Index	Percent change		
				Annual rate	Year ago			Annual rate	Year ago		Monthly rate	Annual rate	Year ago
	2000	136901	3400		2.5	131792	2800		2.2	103.5			1.8
	2001	136940	40		0.0	131833	41		0.0	102.1			-1.4
	2002	136483	-458		-0.3	130345	-1487		-1.1	100.0			-2.0
	2003	137734	1252		0.9	129999	-347		-0.3	98.6			-1.4
	2004	139248	1513		1.1	131473	1474		1.1	100.3			1.7
2002	1	136096	-126	-0.4	-1.2	130500	-419	-1.3	-1.5	100.3	-0.2	-0.7	-2.9
	2	136367	271	0.8	-0.5	130346	-154	-0.5	-1.4	100.2	-0.1	-0.4	-2.3
	3	136824	457	1.3	0.1	130274	-72	-0.2	-1.1	99.8	-0.4	-1.6	-1.9
	4	136642	-182	-0.5	0.3	130262	-12	-0.0	-0.5	99.5	-0.4	-1.5	-1.0
2003	1	137415	773	2.3	1.0	130093	-169	-0.5	-0.3	99.0	-0.4	-1.7	-1.3
	2	137652	237	0.7	0.9	129845	-248	-0.8	-0.4	98.3	-0.8	-3.1	-2.0
	3	137574	-77	-0.2	0.5	129890	45	0.1	-0.3	98.3	0.1	0.3	-1.5
	4	138296	722	2.1	1.2	130168	278	0.9	-0.1	98.8	0.5	2.0	-0.6
2004	1	138408	112	0.3	0.7	130541	374	1.2	0.3	99.3	0.5	2.0	0.3
	2	138883	475	1.4	0.9	131325	784	2.4	1.1	100.0	0.6	2.6	1.7
	3	139608	725	2.1	1.5	131731	406	1.2	1.4	100.6	0.6	2.4	2.3
	4	140092	484	1.4	1.3	132294	564	1.7	1.6	101.3	0.7	2.8	2.5
2003	Jan	137429	1029	9.4	1.3	130247	86	0.8	-0.3	99.3	0.0	0.0	-1.1
	Feb	137365	-64	-0.6	0.7	130125	-122	-1.1	-0.3	98.9	-0.4	-4.7	-1.4
	Mar	137451	86	0.8	0.9	129907	-218	-2.0	-0.4	98.9	0.0	0.0	-1.4
	Apr	137628	177	1.6	1.1	129853	-54	-0.5	-0.4	98.3	-0.6	-7.0	-2.1
	May	137552	-76	-0.7	0.7	129827	-26	-0.2	-0.4	98.2	-0.1	-1.2	-2.0
	Jun	137775	223	2.0	1.0	129854	27	0.2	-0.4	98.3	0.1	1.2	-1.8
	Jul	137511	-264	-2.3	0.8	129857	3	0.0	-0.3	98.3	0.0	0.0	-1.4
	Aug	137593	82	0.7	0.6	129859	2	0.0	-0.3	98.3	0.0	0.0	-1.6
	Sep	137619	26	0.2	0.2	129953	94	0.9	-0.2	98.4	0.1	1.2	-1.5
	Oct	138022	403	3.6	0.7	130076	123	1.1	-0.2	98.8	0.4	5.0	-0.8
	Nov	138457	435	3.8	1.4	130172	96	0.9	-0.1	99.1	0.3	3.7	-0.4
	Dec	138409	-48	-0.4	1.5	130255	83	0.8	0.1	98.6	-0.5	-5.9	-0.7
2004	Jan	138481	72	0.6	0.8	130372	117	1.1	0.1	99.3	0.7	8.9	0.0
	Feb	138334	-147	-1.3	0.7	130466	94	0.9	0.3	99.4	0.1	1.2	0.5
	Mar	138408	74	0.6	0.7	130786	320	3.0	0.7	99.3	-0.1	-1.2	0.4
	Apr	138645	237	2.1	0.7	131123	337	3.1	1.0	99.7	0.4	4.9	1.4
	May	138846	201	1.8	0.9	131373	250	2.3	1.2	100.3	0.6	7.5	2.1
	Jun	139158	312	2.7	1.0	131479	106	1.0	1.3	99.9	-0.4	-4.7	1.6
	Jul	139639	481	4.2	1.5	131562	83	0.8	1.3	100.3	0.4	4.9	2.0
	Aug	139658	19	0.2	1.5	131750	188	1.7	1.5	100.5	0.2	2.4	2.2
	Sep	139527	-131	-1.1	1.4	131880	130	1.2	1.5	100.9	0.4	4.9	2.5
	Oct	139827	300	2.6	1.3	132162	282	2.6	1.6	101.2	0.3	3.6	2.4
	Nov	140293	466	4.1	1.3	132294	132	1.2	1.6	101.1	-0.1	-1.2	2.0
	Dec	140156	-137	-1.2	1.3	132427	133	1.2	1.7	101.5	0.4	4.9	2.9
2005	Jan	140241	85	0.7	1.3	132573	146	1.3	1.7	101.4	-0.1	-1.2	2.1



		Unempl. Rate	Retail and Food Services Sales				Industrial Production				Treasury Yields	
			Billions of dollars	Percent change			Index	Percent change			(Percent)	
				Monthly/ quarterly	Annual rate	Year ago			Monthly/ quarterly	Annual rate	Year ago	3-mo
2000		4.0	3372.438			6.6	115.380			4.3	5.82	6.03
2001		4.8	3475.898			3.1	111.266			-3.6	3.39	5.02
2002		5.8	3564.420			2.5	110.959			-0.3	1.60	4.61
2003		6.0	3754.204			5.3	110.932			-0.0	1.01	4.02
2004		5.5	4038.969			7.6	115.494			4.1	1.37	4.27
2002	1	5.7	878.111	-1.2	-4.7	2.4	109.994	0.6	2.3	-2.9	1.72	5.08
	2	5.8	888.077	1.1	4.6	2.3	111.188	1.1	4.4	-0.6	1.72	5.10
	3	5.7	896.786	1.0	4.0	4.1	111.648	0.4	1.7	1.0	1.64	4.26
	4	5.9	901.446	0.5	2.1	1.4	111.007	-0.6	-2.3	1.5	1.33	4.01
2003	1	5.8	913.320	1.3	5.4	4.0	110.825	-0.2	-0.7	0.8	1.16	3.92
	2	6.1	927.858	1.6	6.5	4.5	109.707	-1.0	-4.0	-1.3	1.04	3.62
	3	6.1	952.983	2.7	11.3	6.3	110.825	1.0	4.1	-0.7	0.93	4.23
	4	5.9	960.043	0.7	3.0	6.5	112.369	1.4	5.7	1.2	0.92	4.29
2004	1	5.7	985.234	2.6	10.9	7.9	113.920	1.4	5.6	2.8	0.92	4.02
	2	5.6	1000.594	1.6	6.4	7.8	115.130	1.1	4.3	4.9	1.08	4.60
	3	5.4	1014.464	1.4	5.7	6.5	115.893	0.7	2.7	4.6	1.49	4.30
	4	5.4	1038.677	2.4	9.9	8.2	117.032	1.0	4.0	4.1	2.01	4.17
2003	Feb	5.9	301.347	-1.1	-12.5	2.7	111.034	0.1	1.6	1.2	1.17	3.90
	Mar	5.8	307.262	2.0	26.3	4.8	110.551	-0.4	-5.1	0.2	1.13	3.81
	Apr	6.0	308.132	0.3	3.5	3.6	109.538	-0.9	-10.5	-1.1	1.13	3.96
	May	6.1	307.397	-0.2	-2.8	4.6	109.640	0.1	1.1	-1.2	1.07	3.57
	Jun	6.3	312.329	1.6	21.0	5.2	109.942	0.3	3.4	-1.7	0.92	3.33
	Jul	6.2	315.123	0.9	11.3	5.2	110.616	0.6	7.6	-1.0	0.90	3.98
	Aug	6.1	320.843	1.8	24.1	6.7	110.528	-0.1	-1.0	-1.0	0.95	4.45
	Sep	6.1	317.017	-1.2	-13.4	6.8	111.331	0.7	9.1	-0.3	0.94	4.27
	Oct	6.0	317.127	0.0	0.4	6.2	111.559	0.2	2.5	0.4	0.92	4.29
	Nov	5.9	321.973	1.5	20.0	7.3	112.657	1.0	12.5	1.3	0.93	4.30
	Dec	5.7	320.943	-0.3	-3.8	5.9	112.892	0.2	2.5	2.0	0.90	4.27
2004	Jan	5.7	324.420	1.1	13.8	6.5	113.223	0.3	3.6	2.1	0.88	4.15
	Feb	5.6	326.996	0.8	10.0	8.5	114.426	1.1	13.5	3.1	0.93	4.08
	Mar	5.7	333.818	2.1	28.1	8.6	114.110	-0.3	-3.3	3.2	0.94	3.83
	Apr	5.5	331.131	-0.8	-9.2	7.5	114.736	0.5	6.8	4.7	0.94	4.35
	May	5.6	335.920	1.4	18.8	9.3	115.534	0.7	8.7	5.4	1.02	4.72
	Jun	5.6	333.543	-0.7	-8.2	6.8	115.120	-0.4	-4.2	4.7	1.27	4.73
	Jul	5.5	336.944	1.0	12.9	6.9	115.930	0.7	8.8	4.8	1.33	4.50
	Aug	5.4	336.059	-0.3	-3.1	4.7	116.036	0.1	1.1	5.0	1.48	4.28
	Sep	5.4	341.461	1.6	21.1	7.7	115.714	-0.3	-3.3	3.9	1.65	4.13
	Oct	5.5	345.033	1.0	13.3	8.8	116.649	0.8	10.1	4.6	1.76	4.10
	Nov	5.4	344.877	-0.0	-0.5	7.1	116.822	0.1	1.8	3.7	2.07	4.19
	Dec	5.4	348.767	1.1	14.4	8.7	117.624	0.7	8.6	4.2	2.19	4.23
2005	Jan	5.2	347.665	-0.3	-3.7	7.2	117.667	0.0	0.4	3.9	2.33	4.22
	Feb										2.54	4.17

		Consumer Price Index					Consumer Price Index less Food and Energy					Producer Price Index Finished Goods			
		Percent change					Percent change					Percent change			
		Index	Monthly/ quarterly	Annual rate	Year ago	Year to date	Index	Monthly/ quarterly	Annual rate	Year ago	Year to date	Index	Monthly/ quarterly	Annual rate	Year ago
2000		172.2			3.4		181.3			2.4		138.0			3.9
2001		177.1			2.8		186.1			2.7		140.7			1.9
2002		179.8			1.6		190.4			2.3		138.9			-1.3
2003		184.0			2.3		193.2			1.5		143.3			3.2
2004		188.9			2.7		196.6			1.8		148.5			3.6
2002	1	178.1	0.4	1.4	1.2	1.4	189.0	0.6	2.4	2.5	2.4	138.2	-0.2	-1.0	-2.4
	2	179.5	0.8	3.3	1.3	2.3	190.0	0.5	2.1	2.4	2.2	138.6	0.3	1.3	-2.3
	3	180.4	0.5	2.1	1.6	2.3	191.0	0.6	2.3	2.3	2.2	138.8	0.1	0.5	-1.4
	4	181.4	0.5	2.1	2.2	2.2	191.8	0.4	1.5	2.1	2.1	139.9	0.8	3.1	1.0
2003	1	183.2	1.0	4.2	2.9	4.2	192.4	0.3	1.4	1.8	1.4	142.7	2.0	8.4	3.3
	2	183.4	0.1	0.4	2.2	2.3	192.8	0.2	0.8	1.5	1.1	142.2	-0.4	-1.5	2.5
	3	184.4	0.5	2.2	2.2	2.2	193.6	0.4	1.6	1.3	1.3	143.5	0.9	3.8	3.4
	4	184.8	0.2	0.9	1.9	1.9	194.1	0.3	1.0	1.2	1.2	144.9	1.0	4.0	3.6
2004	1	186.6	1.0	3.9	1.8	3.9	195.0	0.5	1.9	1.3	1.9	145.9	0.7	2.8	2.2
	2	188.6	1.1	4.4	2.8	4.2	196.2	0.6	2.6	1.8	2.2	148.0	1.4	5.8	4.1
	3	189.4	0.4	1.6	2.7	3.3	197.1	0.4	1.7	1.8	2.1	148.6	0.4	1.6	3.5
	4	191.0	0.9	3.6	3.4	3.4	198.2	0.6	2.3	2.1	2.1	151.5	2.0	8.0	4.5
2003	Jan	182.3	0.4	4.7	2.6	4.7	192.3	0.2	1.9	1.9	1.9	141.2	1.1	13.7	2.5
	Feb	183.3	0.5	6.8	3.0	5.7	192.5	0.1	1.3	1.8	1.6	142.6	1.0	12.6	3.3
	Mar	184.1	0.4	5.4	3.1	5.6	192.5	0.0	0.0	1.7	1.0	144.3	1.2	15.3	3.9
	Apr	183.5	-0.3	-3.8	2.3	3.2	192.5	0.0	0.0	1.5	0.8	142.2	-1.5	-16.1	2.4
	May	183.3	-0.1	-1.3	2.1	2.3	192.9	0.2	2.5	1.5	1.1	141.7	-0.4	-4.1	2.5
	Jun	183.4	0.1	0.7	2.1	2.0	193.0	0.1	0.6	1.5	1.0	142.6	0.6	7.9	2.8
	Jul	183.8	0.2	2.6	2.1	2.1	193.4	0.2	2.5	1.5	1.3	142.8	0.1	1.7	3.0
	Aug	184.4	0.3	4.0	2.2	2.3	193.6	0.1	1.2	1.3	1.3	143.6	0.6	6.9	3.5
	Sep	185.0	0.3	4.0	2.3	2.5	193.7	0.1	0.6	1.2	1.2	144.1	0.3	4.3	3.6
	Oct	184.8	-0.1	-1.3	2.0	2.1	194.0	0.2	1.9	1.3	1.3	144.8	0.5	6.0	3.4
	Nov	184.6	-0.1	-1.3	1.8	1.8	194.0	0.0	0.0	1.1	1.1	144.6	-0.1	-1.6	3.4
	Dec	185.0	0.2	2.6	1.9	1.9	194.2	0.1	1.2	1.1	1.1	145.3	0.5	6.0	4.0
2004	Jan	185.9	0.5	6.0	2.0	6.0	194.6	0.2	2.5	1.2	2.5	145.7	0.3	3.4	3.2
	Feb	186.5	0.3	3.9	1.7	5.0	194.9	0.2	1.9	1.2	2.2	145.6	-0.1	-0.8	2.1
	Mar	187.3	0.4	5.3	1.7	5.1	195.5	0.3	3.8	1.6	2.7	146.4	0.5	6.8	1.5
	Apr	187.7	0.2	2.6	2.3	4.4	195.9	0.2	2.5	1.8	2.6	147.4	0.7	8.5	3.7
	May	188.8	0.6	7.3	3.0	5.0	196.2	0.2	1.9	1.7	2.5	148.3	0.6	7.6	4.7
	Jun	189.3	0.3	3.2	3.2	4.7	196.6	0.2	2.5	1.9	2.5	148.2	-0.1	-0.8	3.9
	Jul	189.2	-0.1	-0.6	2.9	3.9	196.8	0.1	1.2	1.8	2.3	148.3	0.1	0.8	3.9
	Aug	189.3	0.1	0.6	2.7	3.5	196.9	0.1	0.6	1.7	2.1	148.5	0.1	1.6	3.4
	Sep	189.6	0.2	1.9	2.5	3.3	197.5	0.3	3.7	2.0	2.3	148.9	0.3	3.3	3.3
	Oct	190.7	0.6	7.2	3.2	3.7	197.9	0.2	2.5	2.0	2.3	150.9	1.3	17.4	4.2
	Nov	191.2	0.3	3.2	3.6	3.7	198.2	0.2	1.8	2.2	2.2	152.0	0.7	9.1	5.1
	Dec	191.2	0.0	0.0	3.4	3.4	198.5	0.2	1.8	2.2	2.2	151.5	-0.3	-3.9	4.3
2005	Jan	191.3	0.1	0.6	2.9	0.6	198.9	0.2	2.4	2.2	2.4	151.9	0.3	3.2	4.3

## Notes

*Pages 4, 5:* **Final Sales** is gross domestic product (GDP) minus change in private inventories. **Advance, Preliminary, and Final GDP Growth Rates** are released during the first, second, and third months of the following quarter. Changes result from incorporation of more complete information. Real GDP is measured in 2000 dollars. The **ISM** (formerly Purchasing Managers') **Index** is a weighted average of diffusion indexes for new orders, production, supplier deliveries, inventories, and employment. **Aggregate and Average Weekly Hours** are paid hours of production and nonsupervisory employees. The **Inventory-Sales Ratio** uses nominal (current-dollar) inventory and sales data.

*Page 6:* For information on how to calculate the **Contribution** of a component to the overall GDP growth rate, see the October 1999 issue of the Survey of Current Business, p. 16. The sign is changed for **Imports**.

*Page 7:* Ten-year **Treasury Yields** are adjusted to constant maturity; three-month yields are secondary market averages. All rates used in the yield curves are adjusted to constant maturity. The 30-year constant maturity series was discontinued by the Treasury Department as of Feb. 18, 2002. **Standard and Poor's 500 Index with Reinvested Dividends** shows the total return: capital gains plus dividends.

*Pages 8, 9:* **Oil** (West Texas intermediate) and **Natural Gas** (Henry Hub) spot and futures **prices** are listed in the *Wall Street Journal*. Spot prices are monthly averages of daily prices; futures prices are usually taken from the last trading day of the month. **Consumer Price Index** is for all urban consumers. The **Consumption Chain Price Index** is the index associated with the personal consumption expenditures component of GDP. The **Employment Cost Index (ECI)** covers private nonfarm employers. **ECI Compensation** refers to a fixed sample of jobs, while **Compensation per Hour** covers all workers in the nonfarm business sector in a given quarter. In both cases, compensation is wages and salaries plus benefits.

*Pages 10, 11:* Effective with the May 2003 **Employment Situation**, the establishment survey data for employment, hours, and earnings have been converted from the 1987 SIC system to the 2002 NAICS system. All published NAICS-based labor series have been revised back to at least 1990. For more information see <http://www.bls.gov/ces/>. **Nonfarm Payroll Employment** is counted in a survey of about 400,000 establishments (Current Employment Survey). It excludes self-employed individuals and workers in private households, but double-counts individuals with more than one job. The **Household Survey** (Current Population Survey) of about 60,000 households provides estimates of civilian employment, unemployment rate, labor force participation rate, and employment-population ratio. **Population** is civilian, noninstitutional, 16 years and over. The 90 percent confidence intervals for the unemployment rate ( $\pm 0.2$  percentage points) and change in household survey employment ( $\pm 290,000$ ) measure uncertainty due to sample size. Because the household survey was changed in January 1994, data prior to this date are not strictly comparable. The Bureau of Labor Statistics announced several revisions to the Household Survey on Feb. 7, 2003, with the release of the January 2003 data. For more information, see [www.bls.gov/cps/](http://www.bls.gov/cps/).

*Page 13:* The **Michigan Consumer Sentiment Index** shows changes in a summary measure of consumers' answers to five questions about their current and expected financial situation, expectations about future economic conditions, and attitudes about making large purchases. The survey is based on a representative sample of U.S. households.

*Page 15:* **Gross Private Saving** is the sum of personal saving, undistributed corporate profits with IVA and CCAAdj (see notes for pp. 18-19), and private wage accruals less disbursements. **Gross Government Saving** is net government saving (surplus/deficit) plus consumption of fixed capital. **Balance on Current Account (NIPA)** is net capital transfer payments to the rest of the world plus net lending or net borrowing (international trade and income flows).

*Pages 16, 17:* **Government Consumption and Investment** is current expenditures on goods and services, including capital consumption (depreciation) and gross investment, as reported in the NIPAs. The **Unified Federal Budget Surplus/Deficit** differs from **NIPA Basis** in four main ways: (1) NIPA excludes

transactions involving existing assets; (2) NIPA outlays exclude government investment and include consumption of government capital, while unified budget outlays do the reverse; (3) NIPA accounts exclude Puerto Rico and U.S. territories; and (4) various timing issues are handled differently. **Outlays and Receipts** are from the NIPAs, except as noted. Since 1977, the federal **Fiscal Year** starts on October 1. Excluded agency debt was 0.6 percent of federal debt at the end of fiscal 1997. **Federal Debt Held by the Public** includes holdings of the Federal Reserve System and excludes holdings of the social security and other federal trust funds. Federal grants in aid to state and local governments appear in both state and local receipts and federal outlays.

*Pages 18, 19:* The **Trade Balance** (shown on a balance of payments basis) is the difference between exports and imports of goods (merchandise) and services. It is nearly identical in concept to the **Net Exports** component of GDP, but differs slightly in accounting details. The **Investment Income Balance** equals income received from U.S.-owned assets in other countries minus income paid on foreign-owned assets in the U.S. The investment income balance is nearly identical in concept to the difference between gross national product and gross domestic product, but differs in accounting details. The **Current Account Balance** is the trade balance plus the balance on investment income plus net unilateral transfers to the U.S. from other countries.

*Pages 20, 21:* **Output per Hour (Y/H)**, **Unit Labor Cost (C/Y)**, and **Compensation per Hour (C/H)** are indexes which approximately obey the following relationship:  $\%(Y/H) + \%(C/Y) = \%(C/H)$  with  $\%( )$  meaning percent changes. Unit labor cost is shown on page 9. **Real Compensation per Hour** uses the CPI to adjust for the effects of inflation. Nonfarm business accounted for about 76 percent of the value of GDP in 1996, while nonfinancial corporations accounted for about 54 percent. **Inventory Valuation Adjustments (IVA)** remove the effect of changes in the value of existing inventories from corporate profits and proprietors' income. (This change in value does not correspond to current production and therefore is not part of GDP). **Capital Consumption Adjustments (CCAdj)** increase profits and proprietors' income by the difference between estimates of economic depreciation and depreciation allowed by the tax code. Components of national income not shown are rental income of persons and net interest.

**NOTE:** Most measures of economic activity are now based on the 2002 North American Industry Classification System (NAICS), which replaces the 1987 Standard Industry Classification (SIC) system.

## Sources

*Bureau of Economic Analysis (BEA), U.S. Dept. of Commerce*

National income and product accounts, international trade and investment data (except by country), auto and light truck sales.

*Census Bureau, U.S. Dept. of Commerce*

Inventory-sales ratios, retail sales, capital goods orders, housing starts, exports and imports by country.

*Bureau of Labor Statistics (BLS), U.S. Dept. of Labor*

All employment-related data, employment cost index, consumer and producer price indexes, unit labor cost, output per hour, compensation per hour, multifactor productivity.

*United States Department of Treasury*

Unified budget receipts, outlays, deficit, debt.

*Federal Reserve Board*

Index of industrial production, treasury yields, exchange rates, capacity utilization, household debt.

*The Survey Research Center, The University of Michigan*

Consumer sentiment index.

*The Conference Board*

Help-wanted advertising index.

*Organization for Economic Cooperation and Development (OECD)*

GDP for major trading partners (not available on FRED).