

U. S. DEPARTMENT OF LABOR
J. D. Hodgson, Secretary

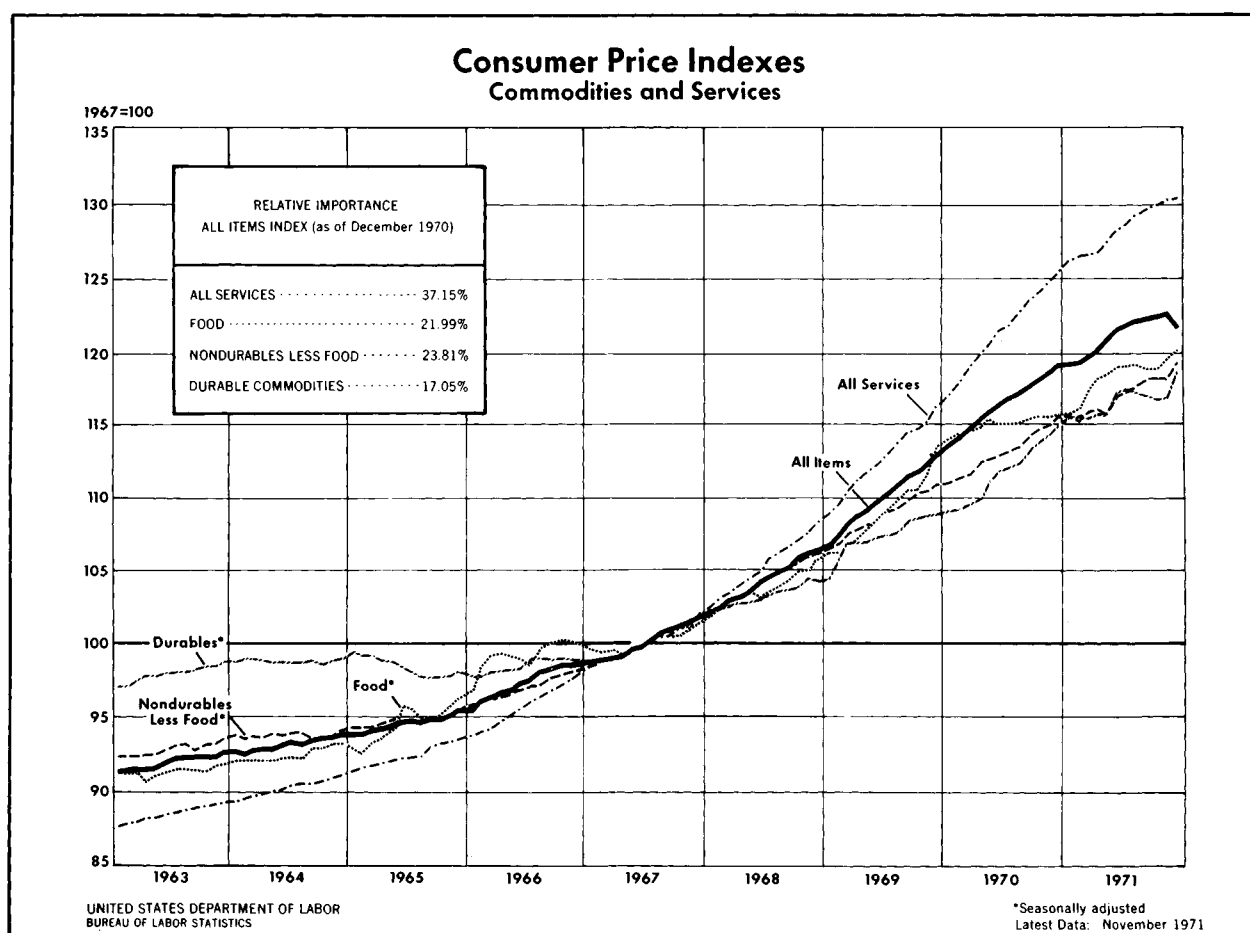
BUREAU OF LABOR STATISTICS
Geoffrey H. Moore, Commissioner

OFFICE OF PRICES
AND LIVING CONDITIONS

Joel Popkin, Assistant Commissioner

the consumer price index

*a monthly report
on consumer price movements
including statistical tables
and technical notes.*



**THE CONSUMER PRICE INDEX
FOR
NOVEMBER 1971**

The Consumer Price Index rose 0.2 percent in November to 122.6 percent of its 1967 base. Most of the increase was due to higher property taxes and higher prices for fresh vegetables, homes, and some women's clothing, the effects of which were moderated by lower prices for used cars and gasoline. The November index was 3.5 percent higher than it was a year ago.

The November CPI reflects the refund required by the Revenue Act of 1971 of excise tax on new cars purchased by consumers in November. Since the refund is retroactive to August 15, 1971, indexes for August, September, and October were recalculated, as announced on December 16, 1971. The recomputation reduces previously published indexes (see tables 9 & 11) to the levels at which they would have been if the tax had not been paid at the time of purchase and alters some percentage changes previously reported. (See page 4 for a more detailed explanation of the effect of the excise tax refund.)

On a seasonally adjusted basis, the increase in the November index was 0.2 percent. During the August-November period, which corresponds roughly to the period covered by Phase I of the Economic Stabilization Program, the CPI increased at a seasonally adjusted annual rate of 1.7 percent, the smallest rise for a 3-month period since January-April of 1967. The August-November change compares with a 4.1 percent annual rate of advance during the 6 months ending in August. All three major components of the index—food, commodities other than food, and services—contributed to the slowdown. In November, the food price index rose 0.7 percent after seasonal adjustment, after no change in October and a decline in September. The index of nonfood commodities was unchanged for the third consecutive month. The index for service charges rose 0.3 percent, compared with increases of 0.5 and 0.6 percent in the 4 months before the wage-price-rent freeze. (See charts on pages 6, 7, 8, and 9.)

Table A. Percent changes in CPI and components, selected periods

Month	Changes from preceding month							Changes in all items at seasonally adjusted compound annual rate		
	All items		Food		Commodities less food		Services	From 3 mos. ago	From 6 mos. ago	From 12 mos. ago
	Unadj.	Seas. adj.	Unadj.	Seas. adj.	Unadj.	Seas. adj.	Unadj.			
November 1970	0.3	0.3	-0.5	0.1	0.5	0.4	0.6	5.6	4.7	5.6
December5	.5	.3	-.1	.3	.7	.6	5.3	4.9	5.5
January 1971	.1	.3	.2	0	-.3	.2	.6	4.5	4.9	5.2
February2	.2	.3	.5	0	-.1	.2	4.0	4.8	4.8
March3	.2	.9	.9	.3	.2	0	2.8	4.1	4.6
April3	.3	.7	.9	.3	.2	.2	2.8	3.6	4.3
May5	.6	.3	.2	.7	.7	.6	4.2	4.1	4.4
June6	.5	.8	.5	.4	.3	.5	5.3	4.0	4.5
July2	.2	.5	.1	-.1	.1	.5	4.9	3.9	4.4
August *2	.3	.2	.1	.1	.3	.5	4.0	4.1	4.4
September*..	.1	.1	-.8	-.3	.3	0	.3	2.6	3.9	4.0
October*2	.1	-.2	0	.5	0	.2	2.4	3.6	3.6
November2	.2	.1	.7	.1	0	.3	1.7	2.8	3.5

* Recalculated to reflect the auto excise tax refund.

The October to November change reflects for the most part changes in prices collected during the wage-price-rent freeze, although some prices were collected before August 15 and after November 13. The November index also includes price changes for items exempt from the freeze, such as raw foods, or subject to special regulations which permit increases under certain conditions. (See page 3 for a fuller explanation of the wage-price-rent freeze on the CPI for November.)

Food

The index for food purchased in grocery stores rose 0.1 percent in November instead of declining sharply as it usually does at this time of year. The change in the food at home index reflects changes in prices from the first week in October to the first week in November. Prices of fresh vegetables, such as lettuce, celery, and carrots, rose more than they usually do in November due to reduced acreage planting of some vegetables, and unfavorable weather conditions in October in some major producing states. Prices of fresh fruits, particularly citrus fruits, declined less than they usually do in November. Production is rising and supplies are expected to be ample, but the citrus crop is later than in previous years. Prices of processed fruits and vegetables which declined in October rose 0.1 percent, a markedly smaller rise than in the first 9 months of this year.

Pork prices, which are still averaging below year earlier levels, rose contra-seasonally, and beef prices declined less than usual. Production of red meats during October was 2 percent less than in September and stocks in cold storage, which usually increase in October, were unchanged. Egg prices declined less than usual in November; they were still much lower than in November 1970.

On the other hand, prices of dairy products decreased seasonally and cereal and bakery product prices declined for the second consecutive month. Corn flake prices continued to move down as a result of the record corn crop and prices were lower for most bakery products.

Table B. Seasonally adjusted percent change in CPI and components

	1-month change			3-month change ending			
	1971			1971			
	November	October	September	November	August	May	February
All items* -----	0.2	0.1	0.1	1.7	4.0	4.2	4.0
Food -----	.7	0	-.3	1.7	2.7	8.2	1.7
Food at home -----	.9	0	-.5	1.4	2.1	9.4	.4
Food away from home -----	.2	.1	.4	2.5	5.5	4.6	5.7
Commodities less food* -----	0	0	0	0	3.1	4.2	3.2
Nondurables less food -----	-.1	.1	.3	1.4	3.8	3.1	3.2
Apparel commodities -----	.1	.4	.2	3.0	-.3	4.4	2.4
Nondurables less food and apparel <u>1/</u> -----	-.3	.2	.3	1.0	6.8	1.8	2.9
Durables* -----	.1	-.2	-.1	-0.7	1.7	4.2	4.3
New cars* -----	-.2	-1.3	-2.2	-13.6	-9.8	-1.0	16.5
Used cars <u>1/</u> -----	-1.3	.1	-.8	-7.9	-1.1	30.7	-11.6
Household durables -----	0	.1	0	0.4	4.3	1.8	1.4
Services <u>1/</u> -----	.3	.2	.3	3.1	6.1	2.9	5.6
Rent <u>1/</u> -----	.2	.3	.3	2.8	3.9	3.9	6.6
Household less rent -----	.5	.5	.3	5.5	9.2	2.4	2.5
Transportation -----	-.1	.1	-.1	-.3	4.9	7.6	10.4
Medical care -----	.2	-.4	.4	0.6	6.8	7.9	7.7
Other -----	.2	.1	.7	4.0	3.0	2.7	6.9

1/ Not seasonally adjusted.

* Reflects recomputation for effect of refund of Federal excise tax on new cars retroactive to August 15, 1971.

Commodities less food

On a seasonally adjusted basis, the index for nonfood commodities was unchanged for the third consecutive month in November as price increases during the fall averaged out to be seasonal, after taking into account the elimination of the excise tax on automobiles. This period coincides roughly with the period covered by Phase I of the wage-price-rent freeze. The index for nonfood commodities increased 0.8 percent seasonally adjusted in the 3 months ending in August 1971.

In November price increases for houses, women's clothing and new cars were offset by sharp declines for gasoline and used cars. New car prices increased 0.5 percent in November. As in October, the November rise was the smallest rise for the month in 4 years. The refund of the excise tax on new cars did not affect changes from October to November, because the indexes in both months were reduced by the same amount. The refund did affect changes in the August and September indexes. (See page 22.) President Nixon's new economic program continued to have a significant effect on automobile sales in November. Monthly sales records were set for each of the last 3 months. Sales of imported cars, however, have declined from record high levels in August and their market share fell from 21.6 percent in August to 11.9 percent in November. The U.S. dock strikes, the 10 percent import surcharge, currency revaluation, and the increase in domestic sales all played a role in the marked decline in the market share of imports. Used car prices dropped 1.3 percent to moderate the rise for durable commodities. The repeal of the excise tax on new cars reduced the difference in prices between a new and a 1-year old car, making the new car price more attractive. As a result, the used car dealers dropped their prices to stimulate the demand for used cars. Gasoline prices, also dropped in November; price wars developed in several cities. The decrease of 1.7 percent compares with a slight increase in October.

The index for apparel commodities rose seasonally as prices of fall and winter clothing items were collected for the first time this season in some areas. Footwear and women's apparel accounted for nearly all the rise in the index.

Services

Nearly three-fourths of the rise in services was due to higher charges for household services. Residential property taxes rose 1.3 percent in November, because of increases in annual property tax charges for several cities. Water and sewage rates rose 1 percent as annual rates were increased in some cities. Charges for natural gas rose 1.1 percent as some cities switched to winter rates. Electricity rates declined slightly, and telephone charges were unchanged. Mortgage interest cost rose because of higher house prices; mortgage interest rates declined for the first time since June.

Transportation service charges rose 0.1 percent due to small increases in charges for auto repairs and private parking. Local transit fares were unchanged for the third consecutive month. Automobile insurance rates were unchanged after dropping sharply in October. The index for medical care services rose 0.1 percent, the smallest increase in 6 years, except for those months in which the annual adjustment to health insurance was made. Physicians' and dentists' fees rose slightly, but charges for hospital daily services were unchanged, the first time this index has not increased in more than 20 years. Nearly every recreation service charge was higher than in October.

Impact of Wage-Price-Rent Freeze

The October-to-November change reflects for the most part changes in prices collected during the wage-price-rent freeze, although some prices were collected before August 15 and after November 13. About one-half of the 0.2 percent increase in the November CPI was due to price changes in items exempt from Phase I of the Economic Stabilization Program. The 0.1 percent increase in the November CPI, after removal of the effects of these exempted items, is less than the comparable increases in the September and October indexes.

Both increases and decreases entered into the net 0.1 percent November change in the items not specifically exempt from the freeze. The increase reflects higher prices for houses, apparel commodities, residential gas, and a few other items. These were partially offset by decreases in other components including used cars, gasoline, and grocery store food not specifically exempt from the freeze. Higher apparel prices reflected in large part the first pricing of fall and winter seasonal items in some areas and returns from sale prices for some year-round items. Residential gas bills also went up, reflecting the change from summer to winter rates.

The above analysis is based upon contributions to the change between October and November of individual index components weighted by their relative importance in the CPI market basket. In the same manner as last month, the Bureau of Labor Statistics carried out a special analysis of the 120,000 individual price comparisons used in the November index. Analysis of the monthly price comparisons, which account for about 80 percent or 98,000 individual quotations, indicates that 79 percent did not change between October and November, 9 percent decreased and 11 percent increased (see table C). These figures reflect much the same pattern as last month, except for services which had fewer decreases and more prices unchanged.

Table C. Percent distribution of October to November price comparisons

	Total	No change	Decrease	Increase*
Total	100.0	79.4	9.3	11.3
Total excluding raw agricultural products	100.0	86.4	6.6	7.0
Food at home	100.0	76.9	10.4	12.7
Raw agricultural products	100.0	45.8	22.1	32.1
Other	100.0	84.8	7.5	7.7
Nonfood commodities	100.0	87.2	6.1	6.7
Services	100.0	97.2	1.0	1.8

* Regulations of the Cost of Living Council permit certain types of increases but it is not possible to determine from data used in the CPI whether allowable increases accounted for all increases shown in the above table.

The November index also includes more than 21,000 price comparisons to November from periods prior to October. Almost 17,000 of these cover the August-November period. Although the bulk of these prices cover the freeze period, some of the August prices were collected before the 15th and some of the November prices were collected after the 13th. Analysis indicates that 9 percent increased and 7 percent declined. In addition, as was done for the October index, the Bureau of Labor Statistics conducted a special collection program to provide information during the freeze. Analysis of more than 5,000 restaurant meals and services prices covered by this special collection showed that about 1.0 percent increased between October and November. In addition, somewhat less than 5,000 rental units were surveyed for the November index, and only 37 or 0.8 percent increased between October and November.

Effect of Excise Tax Refund

The November CPI does not include the Federal excise tax on new cars which was repealed by the Revenue Act of 1971. Since the Act provided for refund of the tax to purchasers of new cars retroactive to August 15, the Consumer Price Indexes for August, September, and October have been recomputed to take account of the refunds. The recomputation, as announced on December 16th, was carried out in accordance with BLS policy established in November 1965 for handling refunds in the CPI and reduces the indexes to the levels at which they would have been if the tax had not been paid out at the time of the purchase. New cars had a relative importance of 2.27 percent in the CPI market basket in December 1970. The new car index at the U.S. level was lowered by 3.6 index points in

August, by 5.6 in September, and by 6.2 in October. The U.S. all items index for August was reduced by 0.1 index points and the indexes for September and October were reduced by 0.2 index points as a result of the refund. The all items indexes for each of the 23 areas for which CPI's are published were also reduced. The actual reduction in each individual area depends upon the level of prices in the area and the area expenditure weight for new cars. Table 11 shows effects of the recalculations.

A NOTE ABOUT CALCULATING INDEX CHANGES

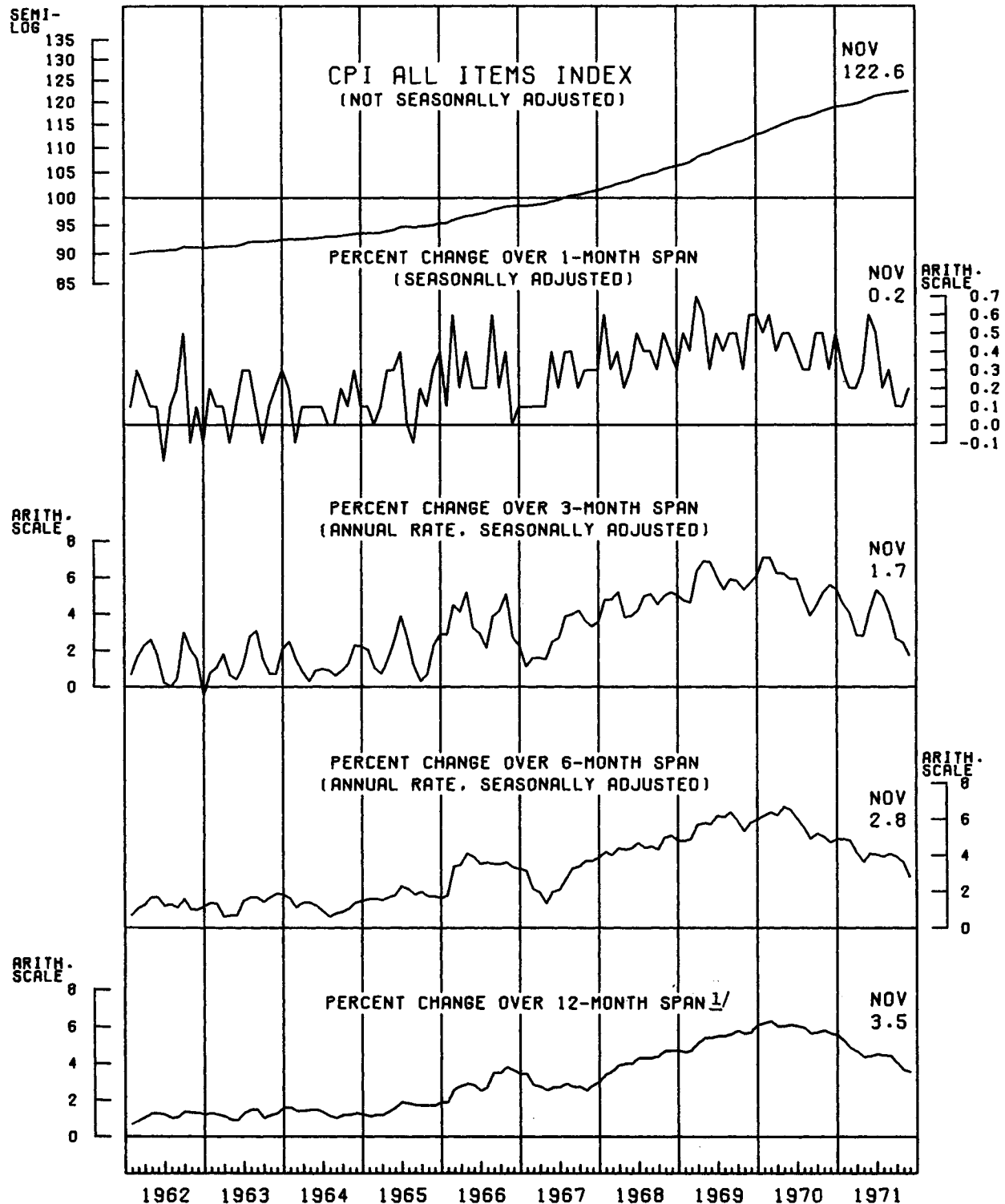
Effective with the February 1970 release, and continuing thereafter, percent changes expressed as annual rates will be computed according to the standard formula for compound growth rates. These data indicate what the percent change would be if the current rate were maintained for a 12-month period.

Movements of the indexes from one to another are usually expressed as percent changes rather than changes in the index points because index point changes are affected by the level of the index in relation to its base period while percent changes are not. The following example illustrates the computation of index point and percent changes:

Index Point Change		Percent Change
November 1971 CPI (1967=100)	122.6	Index point difference divided by the index for the previous period: $\frac{122.6 - 122.4}{122.4} \times 100 = 0.2$
less October index	<u>122.4</u>	
index point difference =	0.2	

Effective with the July 1970 release, and continuing thereafter, seasonally adjusted percent changes in the U.S. All Items Index will be based on seasonal adjustment factors and seasonally adjusted indexes carried to two decimal places. This procedure will help to eliminate rounding error in the percent changes.

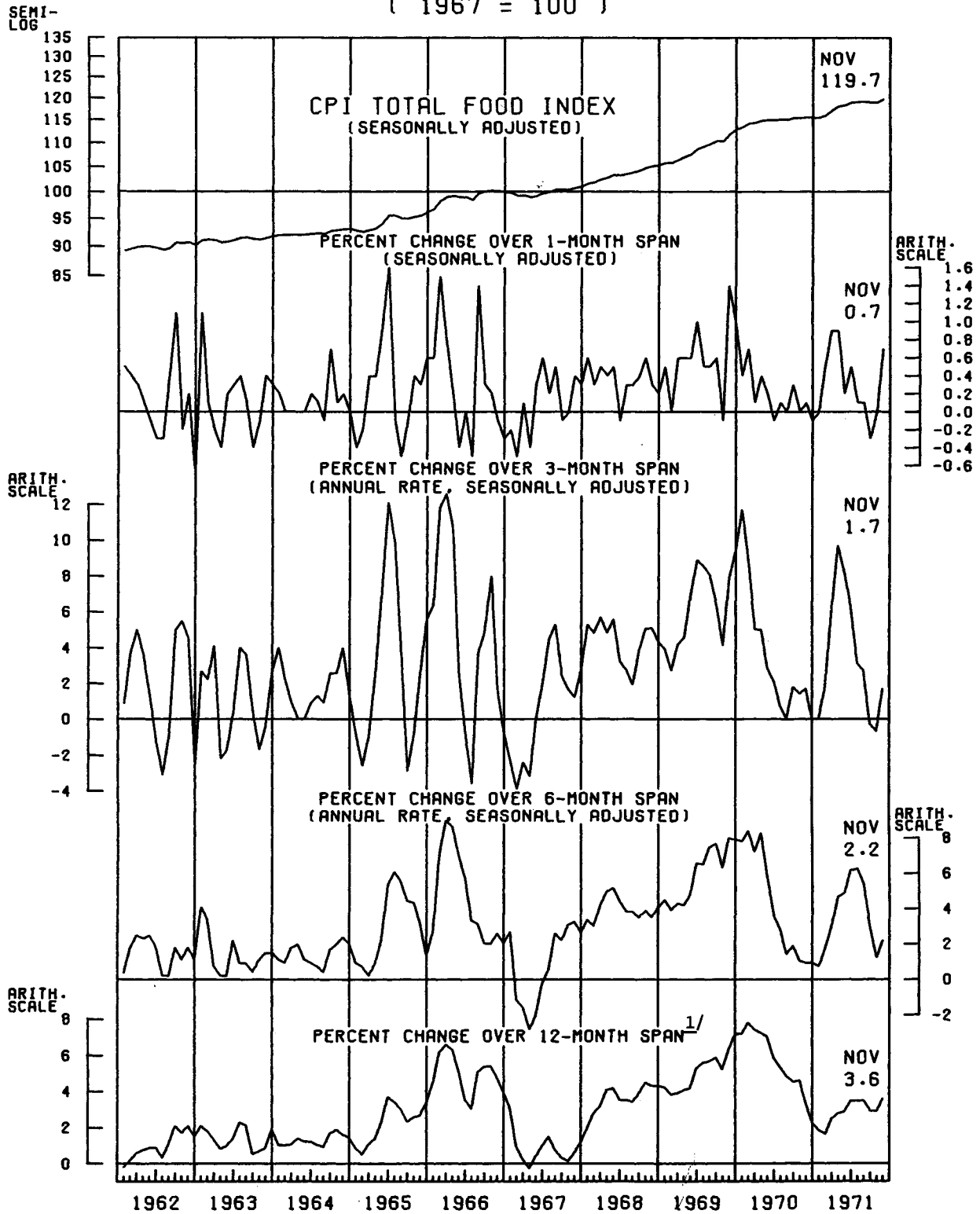
ALL ITEMS INDEX AND ITS RATE OF CHANGE 1962-71 (1967 = 100)



^{1/} Computed from the unadjusted series.

UNITED STATES DEPARTMENT OF LABOR
BUREAU OF LABOR STATISTICS

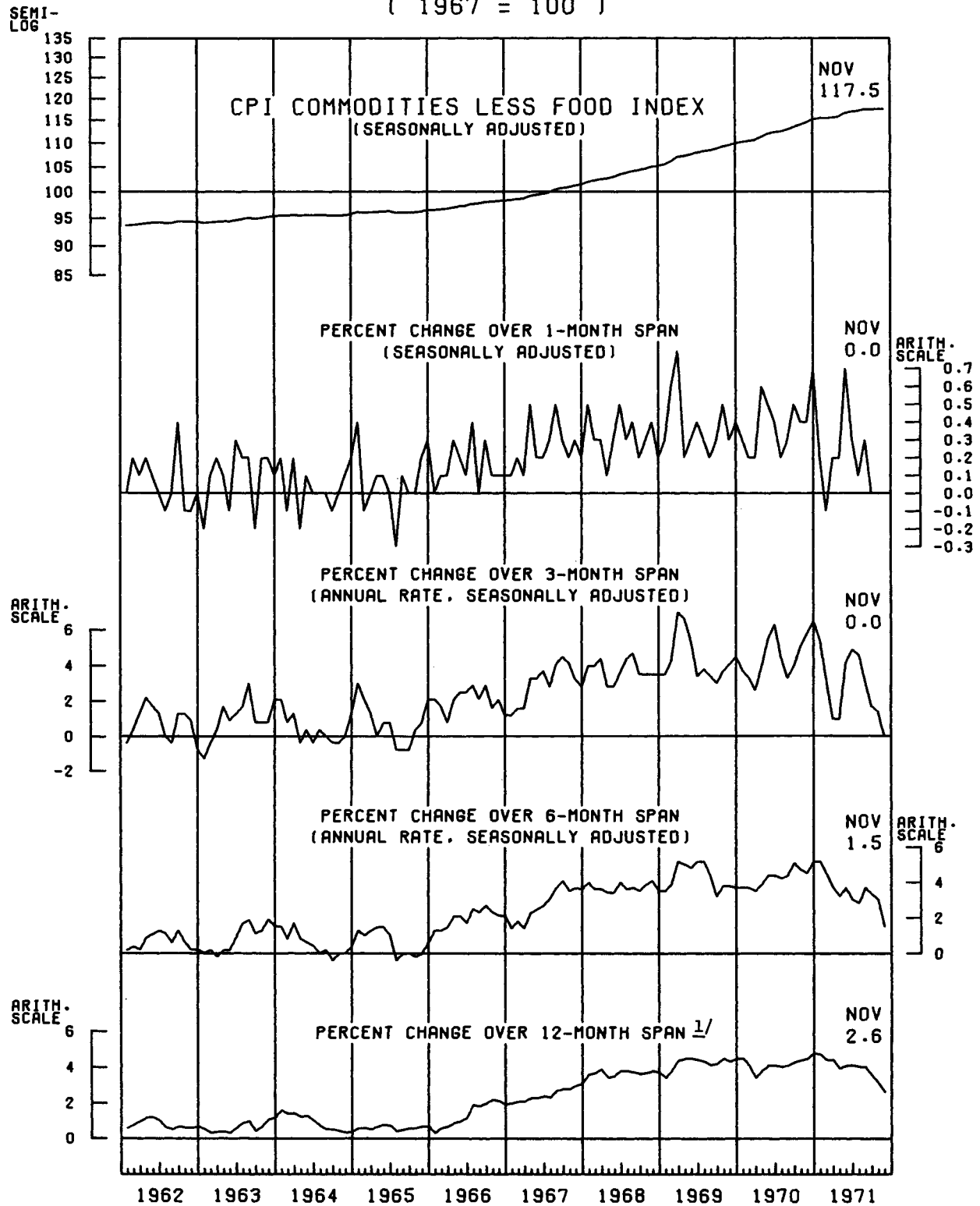
TOTAL FOOD INDEX AND ITS RATE OF CHANGE 1962-71 (1967 = 100)



^{1/} Computed from the unadjusted series.

UNITED STATES DEPARTMENT OF LABOR
BUREAU OF LABOR STATISTICS

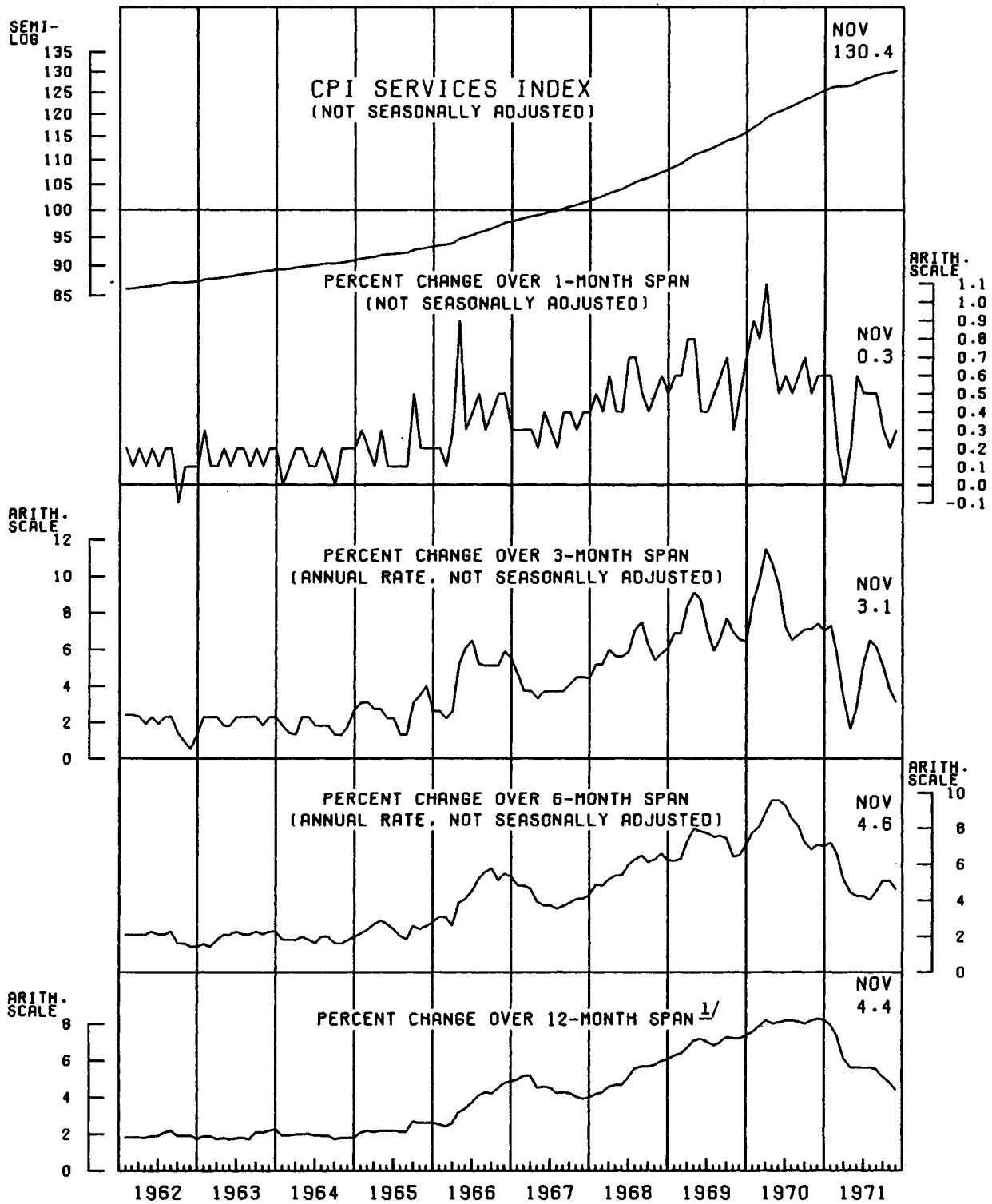
COMMODITIES LESS FOOD INDEX AND ITS RATE OF CHANGE 1962-71 (1967 = 100)



1/ Computed from the unadjusted series.

UNITED STATES DEPARTMENT OF LABOR
BUREAU OF LABOR STATISTICS

SERVICES INDEX AND ITS RATE OF CHANGE 1962-71 (1967 = 100)



^{1/} Computed from the unadjusted series.

UNITED STATES DEPARTMENT OF LABOR
BUREAU OF LABOR STATISTICS

TABLE 1. Consumer Price Index--United States city average for urban wage earners and clerical workers, November 1971

Group	Indexes (1967=100 unless otherwise specified)				Percent change to November 1971 from:		
	November 1971	October 1971	August 1971	November 1970	1 Month Ago	3 Months Ago	1 Year Ago
All items -----	122.6	122.4	122.1	118.5	0.2	0.4	3.5
All items (1957-59=100) -----	142.6	142.4	142.0	137.8	-	-	-
Food -----	119.0	118.9	120.0	114.9	.1	-.8	3.6
Food at home -----	116.7	116.6	118.1	113.0	.1	-1.2	3.3
Cereals and bakery products -----	114.1	114.3	114.5	111.2	-.2	-.3	2.6
Meats, poultry, and fish -----	118.1	118.4	118.7	114.3	-.3	-.5	3.3
Dairy products -----	115.9	116.0	116.0	113.5	-.1	-.1	2.1
Fruits and vegetables -----	117.8	115.6	123.6	109.4	1.9	-4.7	7.7
Other foods at home -----	115.6	116.2	116.7	114.7	-.5	-.9	.8
Food away from home -----	128.2	128.0	127.1	122.5	.2	.9	4.7
Housing -----	126.4	125.9	125.1	121.9	.4	1.0	3.7
Shelter 1/ -----	131.3	130.6	129.5	127.1	.5	1.4	3.3
Rent -----	116.6	116.4	115.8	111.8	.2	.7	4.3
Homeownership 2/ -----	136.7	135.7	134.4	132.5	.7	1.7	3.2
Fuel and utilities 3/ -----	116.8	116.3	116.3	110.7	.4	.4	5.5
Fuel oil and coal -----	118.1	117.8	117.8	113.9	.3	.3	3.7
Gas and electricity -----	116.2	115.7	115.7	109.9	.4	.4	5.7
Household furnishings and operation -----	119.5	119.5	119.1	115.1	0	.3	3.8
Apparel and upkeep 4/ -----	121.9	121.6	119.0	119.0	.2	2.4	2.4
Men's and boys' -----	121.8	121.8	119.6	119.7	0	1.8	1.8
Women's and girls' -----	123.4	122.7	118.2	120.5	.6	4.4	2.4
Footwear -----	123.2	122.7	121.5	119.4	.4	1.4	3.2
Transportation -----	118.8	119.3	119.3	116.0	-.4	-.4	2.4
Private -----	116.6	117.2	117.3	114.2	-.5	-.6	2.1
New cars -----	109.6	109.1	109.3	112.5	.5	.3	-2.6
Used cars -----	110.2	111.7	112.5	108.8	-1.3	-2.0	1.3
Gasoline -----	106.9	108.8	107.9	106.2	-1.7	-.9	.7
Public -----	139.3	139.3	139.1	132.5	0	.1	5.1
Health and recreation -----	123.7	123.5	123.1	118.7	.2	.5	4.2
Medical care -----	129.7	129.6	130.0	123.4	.1	-.2	5.1
Personal care -----	117.9	117.9	117.5	114.5	0	.3	3.0
Reading and recreation -----	120.8	120.5	119.7	116.0	.2	.9	4.1
Other goods and services -----	122.8	122.6	121.8	118.3	.2	.8	3.8
Seasonally Adjusted:							
Food -----	119.7	118.9	119.2	-	.7	.4	-
Apparel and upkeep -----	120.8	120.8	120.1	-	0	.6	-
Transportation -----	118.4	118.9	119.7	-	-.4	-1.1	-
Special Groups:							
All items less food -----	123.7	123.5	122.7	119.6	.2	.8	3.4
All items less medical care -----	122.3	122.1	121.6	118.3	.2	.6	3.4
Commodities less food -----	118.1	118.0	117.1	115.1	.1	.9	2.6
Commodities -----	118.5	118.4	118.2	115.1	.1	.3	3.0
Nondurables -----	118.9	118.8	118.6	115.3	.1	.3	3.1
Nondurables less food -----	118.7	118.7	117.2	115.4	0	1.3	2.9
Apparel commodities -----	122.4	122.0	119.1	119.6	.3	2.8	2.3
Durables -----	117.4	117.1	116.9	114.7	.3	.4	2.4
Household durables -----	113.6	113.6	113.4	111.4	0	.2	2.0
Services -----	130.4	130.0	129.4	124.9	.3	.8	4.4
Services less rent -----	132.9	132.5	131.9	127.3	.3	.8	4.4
Services less medical care -----	129.7	129.3	128.5	124.5	.3	.9	4.2
Insurance and finance -----	140.9	140.1	139.0	139.0	.6	1.4	1.4
Utilities and public transportation -----	121.9	121.6	121.6	115.5	.2	.2	5.5
Housekeeping and home maintenance services -----	140.8	140.6	139.4	130.1	.1	1.0	8.2
Medical care services -----	134.8	134.6	135.1	127.5	.1	-.2	5.7
Purchasing Power of Consumer Dollar:							
1967=\$1.00 -----	\$0.816	\$0.817	\$0.819	\$0.844	-.1	-.4	-3.3
1957-59=\$1.00 -----	.701	.702	.704	.726	-	-	-

1/ Also includes hotel and motel rates not shown separately.

2/ Includes home purchase, mortgage interest, taxes, insurance, and maintenance and repairs.

3/ Also includes telephone, water, and sewerage service not shown separately.

4/ Also includes infants' wear, sewing materials, jewelry, and apparel upkeep services not shown separately.

Note: Index applies to month as a whole, not to any specific date.

TABLE 2. Consumer Price Index--The United States and selected areas for urban wage earners and clerical workers, all items most recent index and percent changes from selected dates

Area 1/	Pricing Schedule 2/	Indexes			Percent change from:		
		1967=100	1957-59=100	Other bases			
		November 1971			October 1971	August 1971	November 1970
U.S. City Average -----	M	122.6	142.6		0.2	0.4	3.5
Chicago -----	M	121.8	138.4		.1	.2	2.6
Detroit -----	M	123.4	141.8		.5	.5	2.9
Los Angeles-Long Beach ---	M	120.1	141.2		-.2	.5	3.4
N.Y.-Northeastern N.J. ---	M	127.6	151.8		.1	.6	5.0
Philadelphia -----	M	124.7	145.6		-.2	.9	3.0
		October 1971				July 1971	October 1970
Boston -----	1	124.5	149.1			1.3	4.3
Houston -----	1	122.4	140.0			.9	3.8
Minneapolis-St. Paul -----	1	123.4	143.1			1.2	3.5
Pittsburgh -----	1	122.9	141.3			.9	3.4
		November 1971				August 1971	November 1970
Buffalo -----	2	123.1		3/ 135.3		0.2	3.7
Cleveland -----	2	124.4	140.4			1.0	2.6
Dallas -----	2	122.4		3/ 132.3		-.2	2.9
Milwaukee -----	2	120.9	136.5			-.4	2.6
San Diego -----	2	120.9		4/ 127.1		.2	2.7
Seattle -----	2	117.6	138.2			0	2.3
Washington -----	2	124.2	144.7			.6	4.1
		September 1971				June 1971	September 1970
Atlanta -----	3	122.0	140.3			-0.2	3.7
Baltimore -----	3	124.4	144.4			.7	5.2
Cincinnati -----	3	121.4	137.8			.6	3.9
Honolulu -----	3	121.2		5/ 130.6		2.3	5.5
Kansas City -----	3	121.5	144.2			.7	4.1
St. Louis -----	3	120.5	140.8			.5	3.3
San Francisco-Oakland ----	3	120.9	143.9			.8	3.6

1/ Area coverage includes the urban portion of the corresponding Standard Metropolitan Statistical Area (SMSA) except for New York and Chicago where the more extensive Standard Consolidated Areas are used. Area definitions are those established for the 1960 Census and do not include revisions made since 1960.

2/ Foods, fuels, and several other items priced every month in all cities; most other goods and services priced as indicated:

M - Every month.

1 - January, April, July, and October.

2 - February, May, August, and November.

3 - March, June, September, and December.

3/ November 1963=100.

4/ February 1965=100.

5/ December 1963=100.

Note: The Consumer Price Index cannot be used for measuring differences in living costs among areas; it indicates price change within areas. Estimates of differences in living costs among areas are found in the family budgets.

TABLE 3. Consumer Price Index--The United States and selected areas ^{1/} for urban wage earners and clerical workers, major groups percent change from October 1971 to November 1971

Group	U.S. City Average	Chicago	Detroit	Los Angeles-Long Beach	New York-Northeastern New Jersey	Philadelphia
All items -----	0.2	0.1	0.5	-0.2	0.1	-0.2
Food -----	.1	.3	0	.4	0	-.3
Housing -----	.4	.2	.7	-.2	.2	-.5
Apparel and upkeep -----	.2	.3	.3	-.1	-.4	-.7
Transportation -----	-.4	-.2	1.1	-1.5	-.1	.2
Health and recreation -----	.2	.2	.7	.2	.2	.2
Medical care -----	.1	.2	.2	0	.3	.2
Personal care -----	0	(2/)	(2/)	(2/)	(2/)	(2/)
Reading and recreation -----	.2	.3	.3	.1	.2	.2
Other goods and services -----	.2	-.2	1.9	.9	.1	(2/)

^{1/} See footnote 1, table 2.

^{2/} Not available.

TABLE 4. Consumer Price Index--United States city average for urban wage earners and clerical workers for selected groups, seasonally adjusted

(1967=100)

Group	Indexes			Percent changes to: November 1971	
	November 1971	October 1971	August 1971	From: 1 Month Ago	3 Months Ago
Food -----	119.7	118.9	119.2	0.7	0.4
Food at home -----	117.6	116.6	117.2	.9	.3
Meats, poultry, and fish -----	118.8	117.8	116.8	.8	1.7
Dairy products -----	115.7	115.7	116.0	0	-.3
Fruits and vegetables -----	121.7	119.9	121.8	1.5	-1.1
Other foods at home -----	115.7	114.8	116.5	.8	-.7
Fuel and utilities ^{1/} -----	116.6	116.6	116.4	0	.2
Fuel oil and coal -----	118.0	118.0	118.5	0	-.4
Apparel and upkeep ^{2/} -----	120.8	120.8	120.1	0	.6
Men's and boys' -----	120.7	121.1	120.3	-.3	.3
Women's and girls' -----	121.3	121.1	120.0	.2	1.1
Footwear -----	122.8	122.5	121.6	.2	1.0
Transportation -----	118.4	118.9	119.7	-.4	-1.1
Private -----	116.3	116.8	117.7	-.4	-1.2
New cars -----	107.3	107.5	111.3	-.2	-3.6
Commodities -----	118.4	118.2	118.1	.2	.3
Commodities less food -----	117.5	117.5	117.5	0	0
Nondurables -----	118.9	118.7	118.4	.2	.4
Nondurables less food -----	118.1	118.2	117.7	-.1	.3
Apparel commodities -----	121.1	121.0	120.2	.1	.7
Durables -----	116.8	116.7	117.0	.1	-.2

^{1/} Also includes telephone, water, and sewerage service not shown separately.

^{2/} Also includes infants' wear, sewing materials, jewelry, and apparel upkeep services not shown separately.

TABLE 5. Consumer Price Index--United States and selected areas ^{1/} for urban wage earners and clerical workers, commodity groups November 1971 index and percent changes from August 1971

Group	U.S. City Average	Chicago	Detroit	Los Angeles- Long Beach	New York	Philadelphia
Indexes (1967=100)						
All items -----	122.6	121.8	123.4	120.1	127.6	124.7
Food -----	119.0	119.2	117.8	115.8	124.3	120.6
Food at home -----	116.7	117.5	116.1	114.4	120.9	117.8
Cereals and bakery products -----	114.1	119.3	114.2	110.5	115.8	116.1
Meats, poultry, and fish -----	118.1	117.9	120.5	116.5	122.9	119.5
Dairy products -----	115.9	115.3	115.0	114.3	118.5	119.5
Fruits and vegetables -----	117.8	119.0	111.2	116.7	124.8	116.8
Other foods at home -----	115.6	115.9	114.1	112.4	118.7	115.1
Food away from home -----	128.2	125.8	125.7	119.5	135.1	132.6
Housing -----	126.4	121.8	131.0	125.3	131.2	127.7
Shelter -----	131.3	126.0	140.8	128.4	136.3	137.3
Rent -----	116.6	111.4	(2/)	117.4	(2/)	121.5
Homeownership -----	136.7	132.6	145.4	131.7	147.5	141.5
Fuel and utilities -----	116.8	111.5	111.2	121.9	119.9	110.6
Fuel oil and coal -----	118.1	113.1	113.9	-	120.2	111.9
Gas and electricity -----	116.2	109.2	112.0	124.3	113.9	112.1
Household furnishings and operation -----	119.5	115.6	113.7	116.3	124.7	120.7
Apparel and upkeep -----	121.9	120.6	118.1	119.3	122.4	120.5
Men's and boys' -----	121.8	118.7	120.1	117.0	121.2	124.4
Women's and girls' -----	123.4	124.8	114.9	122.7	122.9	117.7
Footwear -----	123.2	117.7	122.0	121.7	121.8	124.0
Transportation -----	118.8	124.6	115.2	115.5	129.3	123.6
Private -----	116.6	118.8	112.4	115.6	124.2	120.7
Public -----	139.3	161.2	148.9	113.5	148.8	140.7
Health and recreation -----	123.7	123.7	125.5	118.9	127.7	128.1
Medical care -----	129.7	128.8	136.5	126.8	137.3	139.6
Personal care -----	117.9	(2/)	(2/)	(2/)	117.3	(2/)
Reading and recreation -----	120.8	120.6	120.7	112.7	124.9	125.3
Other goods and services -----	122.8	124.5	120.7	117.7	125.9	-
Percent changes from August 1971 to November 1971						
All items -----	0.4	0.2	0.5	0.5	0.6	0.9
Food -----	-.8	-1.2	-1.3	0	-.5	-1.0
Food at home -----	-1.2	-1.7	-2.0	-.2	-1.0	-1.5
Cereals and bakery products -----	-.3	.3	-1.6	-1.2	.4	-2.3
Meats, poultry, and fish -----	-.5	-1.7	-.4	.1	-.8	.5
Dairy products -----	-.1	-.1	1.4	.1	0	0
Fruits and vegetables -----	-4.7	-3.7	-8.7	.3	-3.0	-5.1
Other foods at home -----	-.9	-2.7	-1.7	-.2	-1.4	-2.5
Food away from home -----	.9	.4	1.4	.4	1.0	.9
Housing -----	1.0	1.2	1.7	1.0	.9	2.4
Shelter -----	1.4	1.6	2.2	1.1	1.3	4.2
Rent -----	.7	3/ .2	(2/)	3/ .2	(2/)	3/ .7
Homeownership -----	1.7	2.1	2.5	1.3	1.6	4.9
Fuel and utilities -----	.4	0	0	0	.2	-.4
Fuel oil and coal -----	.3	-.1	0	-	0	0
Gas and electricity -----	.4	0	0	0	.2	-.7
Household furnishings and operation -----	.3	.5	.8	.9	.6	.5
Apparel and upkeep -----	2.4	4.0	2.3	1.2	2.9	3.3
Men's and boys' -----	1.8	3.0	3.1	1.0	-.8	7.2
Women's and girls' -----	4.4	7.4	2.9	1.5	7.5	1.7
Footwear -----	1.4	-.1	1.7	1.2	1.9	2.9
Transportation -----	-.4	-1.7	-.7	-.3	-.4	0
Private -----	-.6	-2.1	-.8	-.4	-.6	0
Public -----	.1	.1	.1	.1	0	0
Health and recreation -----	.5	.2	.7	.5	.3	.2
Medical care -----	-.2	-.7	.8	-.5	-.1	-.3
Personal care -----	.3	(2/)	(2/)	(2/)	.3	(2/)
Reading and recreation -----	.9	.9	-.5	1.4	.9	1.1
Other goods and services -----	.8	.2	2.3	.9	.2	(2/)

See footnotes at end of table.

TABLE 5. Consumer Price Index --United States and selected areas ^{1/} for urban wage earners and clerical workers, commodity groups November 1971 index and percent changes from August 1971--Continued

Group	Buffalo	Cleveland	Dallas	Milwaukee	San Diego	Seattle	Washington
Indexes (1967=100)							
All items -----	123.1	124.4	122.4	120.9	120.9	117.6	124.2
Food -----	119.8	118.4	118.5	116.3	118.6	116.5	121.2
Food at home -----	118.1	117.1	114.6	114.3	115.1	113.9	117.3
Cereals and bakery products -----	119.0	110.8	113.6	116.4	110.8	109.3	117.0
Meats, poultry, and fish -----	118.8	118.0	114.9	116.9	119.7	115.6	115.1
Dairy products -----	117.4	120.5	111.4	113.4	113.6	115.2	110.6
Fruits and vegetables -----	117.4	120.7	118.4	110.4	116.9	111.8	125.0
Other foods at home -----	117.2	114.4	113.9	112.6	110.4	114.5	120.0
Food away from home -----	129.3	125.7	132.8	124.3	127.4	125.1	131.1
Housing -----	128.7	125.7	126.6	123.5	128.7	120.5	125.0
Shelter -----	130.5	129.0	132.2	127.2	138.3	125.4	129.0
Rent -----	117.2	112.0	111.5	116.3	131.8	105.9	116.4
Homeownership -----	132.9	132.0	141.7	130.7	141.2	131.0	136.4
Fuel and utilities -----	131.8	119.1	115.2	115.3	113.5	111.6	111.3
Fuel oil and coal -----	119.9	-	-	118.4	-	118.7	117.5
Gas and electricity -----	134.1	120.0	110.3	117.3	109.4	107.1	112.7
Household furnishings and operation -----	121.6	117.6	120.2	119.0	111.8	114.2	121.4
Apparel and upkeep -----	124.7	122.8	118.3	127.3	118.6	117.6	125.6
Men's and boys' -----	141.2	121.1	124.4	128.5	118.9	118.2	124.3
Women's and girls' -----	118.1	123.5	113.4	127.4	122.9	118.6	130.3
Footwear -----	123.5	126.1	121.9	126.7	118.5	118.6	126.2
Transportation -----	115.4	124.2	118.7	115.8	114.7	106.7	123.3
Private -----	114.3	120.3	116.6	112.7	114.3	106.2	119.1
Public -----	127.2	149.8	145.5	152.3	123.3	109.8	146.8
Health and recreation -----	122.6	129.9	124.3	121.9	117.1	119.2	125.8
Medical care -----	123.8	142.2	128.8	126.8	122.0	123.8	137.0
Personal care -----	118.8	119.6	120.4	119.4	111.3	113.8	116.4
Reading and recreation -----	125.2	122.6	119.7	121.8	114.9	117.4	120.8
Other goods and services -----	120.3	128.7	125.5	119.0	117.4	119.0	124.1
Percent changes from August 1971 to November 1971							
All items -----	0.2	1.0	-0.2	-0.4	0.2	0	0.6
Food -----	-1.8	-.5	-.8	-1.1	.3	-.4	-.8
Food at home -----	-2.2	-.8	-1.3	-1.4	-.1	-.9	-1.1
Cereals and bakery products -----	.3	-.9	-.3	-.5	-1.4	-1.0	.7
Meats, poultry, and fish -----	-1.4	.5	-.9	-.7	.5	.2	-.5
Dairy products -----	-.1	.5	0	.2	.1	-.3	.1
Fruits and vegetables -----	-8.2	-3.1	-3.9	-6.8	.8	-4.0	-4.4
Other foods at home -----	-1.7	-1.5	-1.2	-.3	-.9	-.3	-.6
Food away from home -----	.4	.5	.8	.2	1.4	1.0	-.2
Housing -----	2.1	2.7	.6	-.8	.5	-.1	1.5
Shelter -----	3.7	4.0	.8	-1.5	.6	-.4	2.0
Rent -----	1.5	.2	-.2	1.0	.6	-1.0	.7
Homeownership -----	4.1	4.7	1.2	-2.2	.6	-.2	2.7
Fuel and utilities -----	-.2	0	.3	.3	.5	1.1	.8
Fuel oil and coal -----	0	-	-	0	-	0	0
Gas and electricity -----	-1.9	0	.6	0	0	.9	0
Household furnishings and operation -----	-.7	-.5	.2	.6	.4	.1	.9
Apparel and upkeep -----	1.8	1.0	-1.0	4.5	.3	1.8	2.4
Men's and boys' -----	4.4	.9	-.2	6.2	-1.2	1.1	.6
Women's and girls' -----	-.2	1.3	-2.6	6.8	.9	3.3	5.0
Footwear -----	1.7	.6	-.2	.0	1.0	.9	2.4
Transportation -----	-2.4	-.6	-.9	3.2	-.9	-2.1	-.5
Private -----	-2.6	-.7	-1.1	3.6	-1.0	-2.5	-.5
Public -----	0	.0	.3	.1	.2	.5	0
Health and recreation -----	.8	.2	-.2	.5	.2	.5	.2
Medical care -----	-.1	-.9	-.8	-.7	-.5	-.2	-1.1
Personal care -----	1.9	1.2	-.1	1.4	.1	.4	.6
Reading and recreation -----	2.0	1.0	-.1	1.1	.9	.8	1.4
Other goods and services -----	-.2	.2	.6	.7	.3	1.3	-.1

^{1/} See footnote 1, table 2.

^{2/} Not available.

^{3/} Change from September 1971.

TABLE 7. Consumer Price Index--United States city average for urban wage earners and clerical workers, food items November 1971 indexes and percent changes from selected dates

Indexes (1967=100)

Item or Group	Index		Percent change to November 1971 from--		
	November 1971		October 1971		November 1970
	Unadjusted	Seasonally adjusted	Unadjusted	Seasonally adjusted	Unadjusted
Total food -----	119.0	119.7	0.1	0.7	3.6
Food away from home -----	128.2	-	.2	-	4.7
Restaurant meals -----	127.9	-	.2	-	4.7
Snacks -----	129.4	-	.1	-	4.7
Food at home -----	116.7	117.6	.1	.9	3.3
Cereals and bakery products -----	114.1	-	.2	-	2.6
Flour -----	101.1	-	0	-	1.5
Cracker meal -----	131.7	-	.1	-	7.9
Corn flakes -----	103.5	-	.1	-	3.7
Rice -----	109.8	-	.1	-	2.7
Bread, white -----	112.0	-	.1	-	.7
Bread, whole wheat -----	119.3	-	.1	-	4.7
Cookies -----	108.7	-	1.1	-	3.1
Layer cake -----	120.5	-	.2	-	3.3
Cinnamon rolls -----	119.2	-	.3	-	3.7
Meats, poultry, and fish -----	118.1	118.8	.3	.8	3.3
Meats -----	118.2	118.8	.1	1.2	2.7
Beef and veal -----	126.6	127.0	.4	.4	6.1
Steak, round -----	125.2	125.5	.2	.4	6.5
Steak, sirloin -----	123.5	-	1.4	-	7.1
Steak, porterhouse -----	125.7	-	1.3	-	8.3
Rump roast -----	124.0	-	1.0	-	6.3
Rib roast -----	128.8	129.4	.4	.5	8.2
Chuck roast -----	125.9	126.3	.2	1.3	5.6
Hamburger -----	127.6	128.0	0	.8	4.2
Beef liver -----	114.7	-	.1	-	1.9
Veal cutlets -----	147.2	148.1	.3	1.0	11.2
Pork -----	106.3	107.4	.5	3.3	2.3
Chops -----	110.5	112.9	.6	4.2	2.4
Loin roast -----	109.2	-	.5	-	.4
Pork sausage -----	112.0	-	.7	-	4.0
Ham, whole -----	102.4	102.7	.4	.7	5.3
Picnics -----	108.7	-	.7	-	3.1
Bacon -----	97.4	98.9	.8	5.0	6.3
Other meats -----	116.5	116.5	0	.4	1.3
Lamb chops -----	124.5	-	.9	-	6.0
Frankfurters -----	115.9	115.8	.1	.5	.3
Ham, canned -----	108.3	-	.5	-	.6
Bologna sausage -----	119.9	-	.2	-	1.1
Salami sausage -----	116.4	-	.3	-	.4
Liverwurst -----	113.8	-	.6	-	.3
Poultry -----	108.1	-	1.7	-	4.6
Frying chicken -----	106.8	109.7	2.0	.9	6.1
Chicken breasts -----	109.7	-	1.4	-	5.1
Turkey -----	112.9	-	.7	-	1.1
Fish -----	132.9	133.3	.1	.2	8.2
Shrimp, frozen -----	120.6	-	.4	-	5.1
Fish, fresh or frozen -----	142.7	143.3	.2	0	10.4
Tuna fish, canned -----	128.2	-	.5	-	4.7
Sardines, canned -----	139.7	-	.4	-	11.9
Dairy products -----	115.9	115.7	.1	0	2.1
Milk, fresh, grocery -----	115.2	114.5	.1	.1	2.1
Milk, fresh, delivered -----	118.1	-	0	-	1.8
Milk, fresh, skim -----	120.1	-	.2	-	2.1
Milk, evaporated -----	120.2	-	1.0	-	4.2
Ice cream -----	106.4	-	.3	-	.4
Cheese, American process -----	122.3	122.5	.2	.2	4.6
Butter -----	105.7	105.4	.1	.1	.1

See footnotes at end of table.

TABLE 6. Consumer Price Index--United States and selected areas for urban wage earners and clerical workers, food and its subgroups, November 1971 indexes and percent changes from October 1971

Area 1/ 	Total food	Food at home						Food away from home
		Total	Cereals and bakery products	Meats, poultry, and fish	Dairy products	Fruits and vegetables	Other foods at home	
Indexes (1967=100)								
U.S. City Average -----	119.0	116.7	114.1	118.1	115.9	117.8	115.6	128.2
Atlanta -----	118.7	115.7	113.5	114.2	116.2	122.2	115.1	128.3
Baltimore -----	121.7	119.6	117.5	120.8	117.7	122.6	117.8	129.9
Boston -----	118.8	116.6	111.8	120.4	114.8	118.7	113.5	126.5
Buffalo -----	119.8	118.1	119.0	118.8	117.4	117.4	117.2	129.3
Chicago -----	119.2	117.5	119.3	117.9	115.3	119.0	115.9	125.8
Cincinnati -----	118.9	117.2	112.7	116.3	117.7	121.2	117.3	125.3
Cleveland -----	118.4	117.1	110.8	118.0	120.5	120.7	114.4	125.7
Dallas -----	118.5	114.6	113.6	114.9	111.4	118.4	113.9	132.8
Detroit -----	117.8	116.1	114.2	120.5	115.0	111.2	114.1	125.7
Honolulu -----	120.4	117.5	104.4	120.8	114.5	126.6	115.9	128.9
Houston -----	120.0	115.6	111.4	115.8	114.9	119.9	115.4	135.4
Kansas City -----	119.8	117.2	116.8	117.4	124.5	111.4	116.4	128.0
Los Angeles-Long Beach -	115.8	114.4	110.5	116.5	114.3	116.7	112.4	119.5
Milwaukee -----	116.3	114.3	116.4	116.9	113.4	110.4	112.6	124.3
Minneapolis-St. Paul ---	119.2	116.6	121.0	118.1	116.3	112.2	116.0	130.6
N.Y.-Northeastern N.J.--	124.3	120.9	115.8	122.9	118.5	124.8	118.7	135.1
Philadelphia -----	120.6	117.8	116.1	119.5	119.5	116.8	115.1	132.6
Pittsburgh -----	119.4	117.3	114.9	116.1	119.6	119.2	117.7	131.7
St. Louis -----	118.5	115.9	119.9	115.3	119.5	116.6	111.1	130.3
San Diego -----	118.6	115.1	110.8	119.7	113.6	116.9	110.4	127.4
San Francisco-Oakland --	116.9	115.1	109.9	116.6	114.8	118.2	113.5	123.5
Seattle -----	116.5	113.9	109.3	115.6	115.2	111.8	114.5	125.1
Washington -----	121.2	117.3	117.0	115.1	110.6	125.0	120.0	131.1
Percent changes October 1971 to November 1971								
U.S. City Average -----	0.1	0.1	-0.2	- 0.3	- 0.1	1.9	- 0.5	0.2
Atlanta -----	.3	.2	.4	- .3	0	2.2	-.3	.4
Baltimore -----	-.1	-.1	.8	-.6	-.4	1.1	-.6	-.1
Boston -----	.3	.2	.4	-.7	-.3	2.6	-.1	.6
Buffalo -----	0	0	0	-.3	-.2	1.9	-.9	0
Chicago -----	.3	.3	.1	-.1	-.3	2.7	-.5	0
Cincinnati -----	0	0	-2.2	0	.2	1.8	-.6	.2
Cleveland -----	.3	.3	-.6	.6	.2	1.9	-.8	.1
Dallas -----	-.2	-.3	-.1	-.9	0	1.8	-.8	.2
Detroit -----	0	-.1	-.1	0	.1	.3	-.6	.2
Honolulu -----	-1.1	- 1.8	.2	- 1.4	0	- 6.8	.4	.7
Houston -----	-.2	-.2	-.9	-.5	-.4	1.6	-.4	0
Kansas City -----	.3	.3	-.1	1.0	.3	-.5	.2	0
Los Angeles-Long Beach -	.4	.5	-.5	-.1	-.1	4.1	-.3	.1
Milwaukee -----	0	-.1	-.5	-.3	0	.6	-.2	.2
Minneapolis-St. Paul ---	.1	.1	-.7	-.1	-.7	2.0	-.2	.2
N.Y.-Northeastern N.J.--	0	0	.3	-.8	-.1	2.0	-.3	.1
Philadelphia -----	-.3	-.3	-1.4	.1	-.3	.5	-1.2	-.2
Pittsburgh -----	.3	.3	.3	-.6	.2	2.2	.3	.2
St. Louis -----	.2	.1	0	.3	.1	.1	0	0
San Diego -----	.8	.5	-.4	.3	.1	3.9	-.6	1.4
San Francisco-Oakland --	.5	.8	-.1	-.1	-.2	4.8	-.2	.1
Seattle -----	.2	.3	-1.4	.1	-.1	2.6	0	.2
Washington -----	-.2	-.1	-1.2	.5	0	0	-.3	-.5

^{1/} See footnote 1, table 2.

TABLE 7. Consumer Price Index--United States city average for urban wage earners and clerical workers, food items November 1971 indexes and percent changes from selected dates--Continued

Item or Group	Index		Percent change to November 1971 from--		
	November 1971		October 1971		November 1970
	Unadjusted	Seasonally adjusted	Unadjusted	Seasonally adjusted	Unadjusted
Fruits and vegetables -----	117.8	121.7	1.9	1.5	7.7
Fresh fruits and vegetables -----	117.3	124.0	3.3	2.8	8.6
Apples -----	98.5	117.4	- 3.2	- 1.3	5.0
Bananas -----	94.1	97.6	- 7.6	.9	- .1
Oranges -----	133.1	123.6	- 2.9	2.1	6.6
Orange juice, fresh -----	129.9	-	.6	-	6.7
Grapefruit -----	126.8	139.6	- 17.4	6.8	16.2
Grapes 1/ -----	138.2	140.2	15.6	4.7	9.3
Strawberries 1/ -----	(1/)	(1/)	(1/)	(1/)	(1/)
Watermelon 1/ -----	(1/)	(1/)	(1/)	(1/)	(1/)
Potatoes -----	110.2	118.4	- .9	- 2.1	.1
Onions -----	106.2	115.6	-3.3	- 1.3	9.1
Asparagus 1/ -----	(1/)	-	(1/)	-	(1/)
Cabbage -----	113.3	126.5	6.5	7.0	7.1
Carrots -----	120.6	123.7	2.8	2.1	16.3
Celery -----	129.1	131.5	15.8	9.1	10.9
Cucumbers -----	104.9	-	8.6	-	15.1
Lettuce -----	146.6	135.1	19.0	14.9	28.7
Peppers, green -----	118.5	-	21.5	-	16.2
Spinach -----	131.0	-	.2	-	3.6
Tomatoes -----	121.7	126.5	14.8	- 2.8	9.1
Processed fruits and vegetables -----	118.5	-	.1	-	6.4
Fruit cocktail, canned -----	119.9	-	- .1	-	6.5
Pears, canned -----	116.9	-	- .5	-	3.3
Pineapple-Grapefruit juice, drink -----	115.1	-	.5	-	2.7
Orange juice concentrate, frozen -----	135.3	135.8	- .5	- .5	14.0
Lemonade concentrate, frozen -----	115.3	-	- .5	-	5.8
Beets, canned -----	116.8	-	- .5	-	4.6
Peas, green, canned -----	108.0	-	.9	-	3.3
Tomatoes, canned -----	115.7	-	0	-	1.8
Dried beans -----	131.9	-	1.0	-	23.3
Broccoli, frozen -----	117.8	-	- .1	-	1.9
Other food at home -----	115.6	115.7	- .5	.8	.8
Eggs -----	103.2	103.8	- 3.3	4.7	- 7.9
Fats and oils:					
Margarine -----	117.8	-	.3	-	6.9
Salad dressing, Italian -----	110.6	-	.6	-	5.3
Salad or cooking oil -----	123.5	-	.1	-	10.2
Sugar and sweets -----	120.0	-	.1	-	2.4
Sugar -----	113.5	-	.1	-	2.8
Grape jelly -----	121.4	-	.2	-	5.4
Chocolate bar -----	131.3	-	- .2	-	1.2
Syrup, chocolate flavored -----	112.5	-	.4	-	.2
Nonalcoholic beverages -----	120.9	-	.2	-	.8
Coffee, can and bag -----	119.0	-	.3	-	5.6
Coffee, instant -----	125.1	-	.2	-	1.1
Tea -----	107.8	-	0	-	.7
Cola drink -----	127.1	-	.2	-	4.5
Carbonated fruit drink -----	127.7	-	.1	-	3.9
Prepared and partially prepared foods ---	113.2	-	.2	-	2.3
Bean soup, canned -----	114.7	-	0	-	1.3
Chicken soup, canned -----	106.0	-	.5	-	- .2
Spaghetti, canned -----	117.7	-	0	-	1.6
Mashed potatoes, instant -----	110.7	-	.3	-	2.9
Potatoes, french fried, frozen -----	108.5	-	- 1.3	-	- 1.7
Baby foods, canned -----	111.3	-	.3	-	1.9
Sweet pickle relish -----	120.6	-	.5	-	7.0
Pretzels -----	114.0	-	.3	-	3.9

1/ Priced only in season.

TABLE 8. Consumer Price Index--United States city average for urban wage earners and clerical workers, indexes for selected items and groups, November 1971 and percent changes from selected dates

(1967=100 unless otherwise specified)

Item and group	Other index bases	Indexes		Percent change to November 1971 from	
		November 1971	October 1971	October 1971	November 1970
Housing -----		126.4	125.9	0.4	3.7
Shelter 1/ -----		131.3	130.6	.5	3.3
Rent -----		116.6	116.4	.2	4.3
Homeownership costs 2/ -----		136.7	135.7	.7	3.2
Mortgage interest rates -----		118.9	119.1	-.2	10.7
Property taxes -----		136.3	134.6	1.3	9.7
Property insurance rates -----		122.4	122.4	0	7.0
Maintenance and repairs -----		137.1	137.0	.1	7.4
Commodities 3/ -----		120.8	120.9	-.1	4.3
Exterior house paint -----		116.5	116.5	0	2.5
Interior house paint -----		115.3	115.6	-.3	2.4
Services -----		144.1	144.0	.1	8.7
Repainting living and dining rooms -----		153.6	153.1	.3	10.1
Reshingling house roof -----		150.6	150.7	-.1	12.4
Residing house -----		133.2	133.1	.1	6.2
Sink replacement -----		143.6	143.4	.1	7.0
Furnace repair -----		149.1	149.2	-.1	9.5
Fuel and utilities -----		116.8	116.3	.4	5.5
Fuel oil and coal -----		118.1	117.8	.3	3.7
Fuel oil, #2 -----		116.4	116.4	0	3.6
Gas and electricity -----		116.2	115.7	.4	5.7
Gas -----		118.1	116.8	1.1	6.7
Electricity -----		114.5	114.6	-.1	4.9
Other utilities:					
Residential telephone services -----		110.2	110.2	0	5.9
Residential water and sewerage services -----		136.4	135.0	1.0	5.8
Household furnishings and operation 4/ -----		119.5	119.5	0	3.8
Housefurnishings -----		115.1	115.1	0	2.1
Textiles -----		112.9	112.2	.6	1.5
Sheets, percale or muslin -----		116.5	113.4	2.7	-.3
Curtains, tailored, polyester -----		110.9	111.5	-.5	2.4
Bedsprads, chiefly cotton -----		108.4	107.8	.6	0
Drapery fabric, cotton or rayon/acetate -----		119.0	119.5	-.4	1.8
Pillows, bed, polyester, acrylic, or kapok -----		109.5	108.2	1.2	2.2
Slipcover, throws, ready made chiefly cotton -----		112.8	112.5	.3	2.7
Furniture and bedding -----		119.9	119.9	0	2.5
Bedroom furniture, chest and dresser -----	Mar. 70	104.8	104.7	.1	3.1
Living room suites, good and inexpensive quality --		116.6	116.5	.1	2.2
Lounge chairs, upholstered -----		125.0	125.0	0	3.7
Dining room chairs -----	Mar. 70	103.4	103.3	.1	1.9
Sofas, upholstered -----		119.1	119.4	-.3	2.1
Sofas, dual purpose -----		116.4	116.4	0	-.3
Bedding, mattress and box springs -----	June 70	103.9	104.1	-.2	2.7
Aluminum folding chair 5/ -----		(5/)	(5/)	(5/)	(5/)
Cribs -----		119.2	118.0	1.0	2.4
Floor coverings -----		106.3	106.5	-.2	.9
Broadloom, carpeting, manmade fibers -----		101.8	102.3	-.5	-.9
Vinyl sheet goods -----		116.3	116.0	.3	5.4
Vinyl asbestos tile -----		117.0	116.7	.3	4.0
Appliances 6/ -----		105.7	105.8	-.1	.9
Washing machines, electric, automatic -----		110.0	110.0	0	1.9
Vacuum cleaners, canister type -----		103.9	104.1	-.2	1.4
Refrigerators or refrigerator-freezers, electric --		108.2	108.3	-.1	1.2
Ranges, free standing, gas or electric -----		111.0	112.0	-.9	1.6
Clothes dryers, electric, automatic -----		113.0	113.1	-.1	3.2
Air conditioners, demountable 5/ -----		(5/)	(5/)	(5/)	(5/)
Room heaters, electric, portable 5/ -----		108.5	108.0	.5	-.2
Garbage disposal units -----		110.3	110.2	.1	-.1
Other housefurnishings:					
Dinnerware, chinaware -----		119.2	119.3	-.1	5.1
Flatware, stainless steel -----		122.0	122.1	-.1	1.9
Table lamps, with shade -----		122.2	122.0	.2	3.2
Lawn mowers, power, rotary type 5/ -----		(5/)	(5/)	(5/)	(5/)
Electric drills, hand held -----		106.9	107.2	-.3	-.7
Housekeeping supplies:					
Laundry soaps and detergents -----		110.6	110.9	-.3	4.0
Paper napkins -----		128.9	128.8	.1	6.5
Toilet tissue -----		123.6	123.9	-.2	3.0
Housekeeping services:					
Domestic service, general housework -----		136.0	135.3	.5	3.9
Baby sitter service -----		132.4	132.3	.1	5.2
Postal charges -----		146.6	146.6	0	21.2
Laundry, flatwork, finished service -----		135.6	135.4	.1	6.7
Licensed day care service, preschool child -----		119.1	119.4	-.3	2.8
Washing machine repairs -----		138.2	137.6	.4	7.5

TABLE 8. Consumer Price Index--United States city average for urban wage earners and clerical workers, indexes for selected items and groups, November 1971 and percent changes from selected dates--Continued

(1967=100 unless otherwise specified)

Item and group	Other index bases	Indexes		Percent change to November 1971 from:	
		November 1971	October 1971	October 1971	November 1970
Apparel and upkeep 1/ -----		121.9	121.6	0.2	2.4
Apparel commodities -----		122.4	122.0	.3	2.3
Apparel commodities less footwear -----		122.3	121.9	.3	2.2
Men's and boys' -----		121.8	121.8	0	1.8
Men's:					
Topcoats, wool or all-weather coats, polyester blends 5/ -----		124.4	123.4	.8	-.5
Suits, year round weight -----		133.0	132.4	.5	3.6
Suits, tropical weight 5/ -----		(5/)	(5/)	(5/)	(5/)
Jackets, lightweight -----		114.2	112.9	1.2	.8
Slacks, wool or wool blends -----		117.6	118.2	-.5	.2
Slacks, cotton or manmade blends -----		134.7	133.9	.6	5.5
Trousers, work, cotton or polyester/cotton -----		114.0	114.0	0	3.1
Shirts, work, cotton or polyester/cotton -----		114.8	114.6	.2	4.0
Shirts, business, polyester/cotton -----		114.4	113.0	1.2	1.8
T-shirts, chiefly cotton -----		118.4	118.9	-.4	-1.1
Socks, cotton or manmade fibers -----		115.7	115.7	0	0
Handkerchiefs, cotton or polyester/cotton -----		115.7	115.7	0	1.3
Boys's:					
Coats, all purpose, cotton or cotton blend 5/ -----		120.3	119.2	.9	-.1
Sport coats, wool or wool blend 5/ -----		118.3	128.1	-7.7	-4.8
Dungarees, cotton or cotton blend -----		125.2	123.2	1.6	5.0
Undershorts, cotton -----		119.6	119.6	0	.8
Women's and girls' -----		123.4	122.7	.6	2.4
Women's:					
Coats, heavyweight, wool or wool blend 5/ -----		127.7	127.2	.4	1.4
Carcoats, heavyweight, cotton 5/ -----		130.3	130.3	0	3.3
Sweaters, wool or acrylic 5/ -----		123.6	124.0	-.3	5.1
Skirts, wool, wool blend or manmade fibers 5/ -----		142.1	135.7	4.7	5.7
Skirts, cotton or polyester/cotton 5/ -----		(5/)	(5/)	(5/)	(5/)
Blouses, cotton or manmade fibers -----		122.2	120.0	1.8	1.4
Dresses, street, chiefly manmade fiber -----		131.1	129.4	1.3	.2
Dresses, street, wool or wool blend 5/ -----		143.8	144.3	-.3	7.5
Slips, nylon -----		110.4	111.1	-.6	.8
Panties, acetate or nylon tricot -----		116.2	115.4	.7	2.7
Girdles, manmade blend -----		117.9	117.7	.2	4.3
Brassiers, nylon lace -----		123.4	123.0	.3	5.0
Hose, or panty hose, nylon seamless -----		98.2	98.1	.1	-2.4
Anklets, or knee-length socks, various fibers -----		115.6	114.6	.9	-.2
Gloves, fabric, nylon or cotton -----		109.7	109.5	.2	-.1
Handbags, rayon faille or plastic -----		136.8	134.8	1.5	7.9
Girls's:					
Raincoats, vinyl, cotton, or polyester blends -----		119.5	118.5	.8	-.7
Skirts, wool, wool blends, or acrylic 5/ -----		107.1	109.0	-1.7	-3.0
Dresses, cotton, manmade fibers or blends -----		109.4	110.3	-.8	5.0
Slacks, cotton or chiefly cotton 5/ -----		131.5	131.8	-.2	.2
Slips, polyester blends -----		111.3	110.9	.4	2.5
Handbags, plastic -----		130.0	129.3	.5	.8
Footwear -----		123.2	122.7	.4	3.2
Men's:					
Shoes, street -----		121.1	119.8	1.1	3.9
Shoes, work, high -----		120.4	120.1	.2	4.1
Women's:					
Shoes, street, pump -----		125.2	124.5	.6	2.4
Shoes, evening, pump -----		121.0	121.0	0	.7
Shoes, casual -----		126.0	125.7	.2	1.6
Houseslippers, scuff -----		123.6	123.5	.1	2.9
Children's:					
Shoes, oxford -----		124.4	123.8	.5	4.8
Sneakers, boys', oxford type -----		119.9	119.7	.2	4.9
Dress shoes, girls', strap or pump -----		128.6	128.4	.2	5.4
Miscellaneous apparel:					
Diapers, cotton gauze or disposable -----		113.3	112.8	.4	3.1
Yard goods, polyester blend -----		122.3	122.1	.2	.1
Wrist watches, men's and women's -----		113.8	113.3	.4	2.2
Apparel services:					
Drycleaning, men's suits and women's dresses -----		117.0	117.2	-.2	2.5
Automatic laundry service -----		113.8	113.3	.4	1.0
Laundry, men's shirts -----		119.2	119.2	0	2.1
Tailoring charge, hem adjustment -----		131.2	130.0	.9	5.3
Shoe repair, women's heel lift -----		114.0	114.0	0	4.8

TABLE 8. Consumer Price Index--United States city average for urban wage earners and clerical workers, indexes for selected items and groups, November 1971 and percent changes from selected dates--Continued

(1967=100 unless otherwise specified)

Item and group	Other index bases	Indexes		Percent change to November 1971 from:	
		November 1971	October 1971	October 1971	November 1970
Transportation -----		118.8	119.3	- 0.4	2.4
Private 8/ -----		116.6	117.2	- .5	2.1
Automobiles, new -----		109.6	109.1	.5	- 2.6
Automobiles, used -----		110.2	111.7	- 1.3	1.3
Gasoline, regular and premium -----		106.9	108.8	- 1.7	.7
Motor oil, premium -----		121.8	121.7	.1	4.5
Tires, new, tubeless -----		118.8	117.6	1.0	3.4
Auto repairs and maintenance 9/ -----		131.6	131.3	.2	6.8
Auto insurance rates -----		141.8	141.8	0	7.6
Auto registration -----		123.7	123.7	0	4.9
Parking fees, private and municipal -----		136.8	136.5	.2	7.0
Public -----		139.3	139.3	0	5.1
Local transit fares -----		144.0	144.0	0	3.4
Taxicab fares -----		131.7	131.7	0	11.9
Railroad fares, coach -----		127.6	127.7	- .1	2.6
Airplane fares, chiefly coach -----		129.6	129.6	0	6.6
Bus fares, intercity -----		135.9	135.9	0	13.4
Health and recreation -----		123.7	123.5	.2	4.2
Medical care -----		129.7	129.6	.1	5.1
Drugs and prescriptions -----		105.7	105.6	.1	1.6
Over-the-counter items -----		110.5	110.4	.1	2.0
Multiple vitamin concentrates -----		95.4	95.4	0	- 1.9
Aspirin compounds -----		115.4	115.8	- .3	3.9
Liquid tonics -----		100.8	100.9	- .1	- .8
Adhesive bandages, package -----		123.6	123.6	0	4.9
Cold tablets or capsules -----		113.2	112.0	1.1	3.9
Cough syrup -----		111.2	111.4	- .2	.5
Prescriptions -----		101.6	101.6	0	1.3
Anti-infectives -----		79.4	79.6	- .3	- 4.3
Sedatives and hypnotics -----		124.6	123.8	.6	4.8
Ataractics -----		102.6	102.5	.1	2.0
Anti-spasmodics -----		107.8	107.9	- .1	3.4
Cough preparations -----		127.2	127.4	- .2	4.6
Cardiovasculars and anti-hypertensives -----		112.0	112.0	0	3.9
Analgesics, internal -----		107.9	107.7	.2	1.7
Anti-obesity -----		117.0	117.0	0	5.7
Hormones -----		94.6	94.7	- .1	- .4
Professional services:					
Physicians' fees -----		132.0	131.7	.2	5.9
General physician, office visits -----		133.1	133.0	.1	5.7
General physician, house visits -----		134.1	133.9	.1	7.5
Obstetrical cases -----		131.5	131.5	0	6.0
Pediatric care, office visits -----		134.7	133.6	.8	6.7
Psychiatrist, office visits -----		127.2	125.9	1.0	4.6
Herniorrhaphy, adult -----		126.2	125.2	.8	5.3
Tonsillectomy and adenoidectomy -----		128.7	128.2	.4	6.7
Dentists' fees -----		129.8	129.6	.2	6.4
Fillings, adult, amalgam, one surface -----		131.0	131.0	0	6.7
Extractions, adult -----		129.4	128.9	.4	6.0
Dentures, full upper -----		127.7	127.7	0	6.0
Other professional services:					
Examination, prescription, and dispensing of eyeglasses -----		122.9	122.6	.2	5.7
Routine laboratory tests -----		117.8	117.8	0	4.4
Hospital service charges:					
Daily service charges -----		164.6	164.6	0	9.5
Semiprivate rooms -----		167.0	167.0	0	9.9
Private rooms -----		161.1	161.1	0	9.1
Operating room charges -----		159.0	159.1	- .1	8.1
X-ray, diagnostic series, upper G.I. -----		126.6	126.5	.1	5.8
Personal care -----		117.9	117.9	0	3.0
Toilet goods -----		114.8	114.9	- .1	3.1
Toothpaste, standard dentifrice -----		108.3	108.8	- .5	1.3
Toilet soap, hard milled -----		118.8	118.4	.3	8.7
Hand lotions, liquid -----		120.0	120.5	- .4	2.7
Shaving cream, aerosol -----		107.8	107.1	.7	4.2
Face powder, pressed -----		122.4	123.9	- 1.2	.4
Deodorants, aerosol -----		105.9	106.3	- .4	2.3
Cleansing tissues -----		123.6	122.6	.8	3.6
Home permanent wave kits -----		111.7	111.8	- .1	2.1
Personal care services -----		121.2	121.0	.2	2.7
Men's haircuts -----		123.7	123.7	0	2.1
Beauty shop services -----		119.4	119.1	.3	3.2
Women's haircuts -----		120.2	119.8	.3	2.5
Shampoo and wave sets, plain -----		122.7	122.6	.1	3.6
Permanent waves, cold -----		111.4	111.0	.4	3.1

TABLE 8. Consumer Price Index--United States city average for urban wage earners and clerical workers, indexes for selected items and groups, November 1971 and percent changes from selected dates--Continued

(1967=100 unless otherwise specified)

Item and group	Other index bases	Indexes		Percent change to November 1971 from:	
		November 1971	October 1971	October 1971	November 1970
Reading and recreation ^{10/} -----		120.8	120.5	0.2	4.1
Recreational goods -----		107.2	107.2	0	1.6
TV sets, portable and console -----		100.3	100.2	.1	-1.1
TV replacement tubes -----		124.5	124.1	.3	2.8
Radios, portable and table model -----		98.4	98.1	.3	-6
Tape recorders, portable -----		92.5	92.7	-.2	-3.5
Phonograph records, stereophonic -----		106.5	106.5	0	6.9
Movie cameras, Super 8, zoom lens -----		88.9	89.2	-.3	-2.1
Film, 35mm, color -----		108.5	108.3	.2	1.0
Golf balls, liquid center or solid core -----		104.8	104.8	0	1.3
Basketballs, rubber or vinyl cover -----		125.5	125.7	-.2	4.8
Fishing rods, fresh water spincasting -----		110.8	110.8	0	.4
Bowling balls -----		112.7	112.6	.1	2.8
Bicycles, boys' -----		113.6	114.0	-.4	3.6
Tricycles -----		111.7	111.9	-.2	1.9
Dog food, canned or boxed -----		110.8	110.5	.3	5.5
Recreational services -----		126.6	126.2	.3	3.9
Indoor movie admissions -----		138.7	138.3	.3	3.9
Adult -----		138.2	138.0	.1	3.5
Children's -----		140.1	139.1	.7	5.1
Drive-in movie admissions, adult -----		142.3	142.3	0	4.4
Bowling fees, evening -----		117.7	116.7	.9	3.8
Golf green fees ^{11/} -----		(11/)	128.3	(11/)	(11/)
TV repair, color picture tube replacement -----		98.5	98.4	.1	2.2
Film developing, color -----		118.3	118.1	.2	4.0
Reading and education: -----					
Newspapers, street sale and delivery -----		130.6	130.5	.1	4.3
Magazines, single copy and subscription -----		124.8	124.8	0	1.6
Piano lessons, beginner -----		121.5	121.5	0	2.1
Other goods and services -----		122.8	122.6	.2	3.8
Tobacco products -----		129.0	128.9	.1	4.2
Cigarettes, nonfilter tip, regular size -----		130.3	130.2	.1	4.0
Cigarettes, filter tip, king size -----		130.8	130.8	0	4.6
Cigars, domestic, regular size -----		109.3	108.7	.6	3.4
Alcoholic beverages -----		118.3	117.9	.3	3.6
Beer -----		113.7	113.6	.1	2.9
Whiskey, spirit blended and straight bourbon -----		106.9	106.8	.1	1.1
Wine, dessert and table -----		124.9	124.7	.2	5.9
Away from home -----		128.8	127.7	.9	4.9
Financial and miscellaneous personal expenses: -----					
Funeral services, adult -----		119.1	118.8	.3	4.0
Bank service charges, checking accounts -----		109.3	109.3	0	-1.7
Legal services, short form will -----		140.2	139.9	.2	7.9
Other special groups: -----					
All items less shelter -----		120.4	120.3	.1	3.5
Commodities less food -----		118.1	118.0	.1	2.6
Nondurables less food and apparel -----		116.5	116.8	-.3	3.1
Household services less rent -----		135.4	134.7	.5	3.6
Transportation services -----		134.0	133.9	.1	5.6
Other services -----		124.0	123.8	.2	4.1

^{1/} Also includes hotel and motel rates not shown separately.

^{2/} Also includes home purchase costs not shown separately.

^{3/} Also includes pine shelving, furnace air filters, packaged dry cement mix, and shrubbery not shown separately.

^{4/} Also includes venetian blinds, window shades, nails, carpet sweepers, utility pails, air deodorizers, steel wool scouring pads, envelopes, reupholstering, and moving expenses.

^{5/} Priced only in season.

^{6/} Also includes radios and television sets, shown separately under reading and recreation.

^{7/} Also includes men's sweaters, sport shirts, women's and girls' lightweight coats, women's slacks, cocktail dresses, bathing suits, girls' robes, cotton and polyester blend skirts, shorts, earrings, and zippers not shown separately.

^{8/} Also includes storage batteries and drivers' license fees not shown separately.

^{9/} Includes prices for water pump replacement, motor tune-up, automatic transmission repair, exhaust system repair, front end alignment, and chassis lubrication.

^{10/} Also includes outboard motors, nondurable toys, college tuition fees, paperback books, and college textbooks, not shown separately.

^{11/} Not available.

TABLE 9. U.S. City Average Consumer Price Index: Indexes for Components affected by Refunds of Federal Excise Tax on New Automobiles, Revised 1/ and as Previously Published (1967=100 unless otherwise indicated)

	October 1971		September 1971		August 1971 2/	
	Revised	Previously Published	Revised	Previously Published	Revised	Previously Published
All items -----	122.4	122.6	122.2	122.4	122.1	122.2
All items (1957-59=100) -----	142.4	142.6	142.1	142.3	142.0	142.1
Transportation -----	119.3	120.6	118.6	119.8	119.3	120.1
Private transportation -----	117.2	118.6	116.4	117.8	117.3	118.1
New cars -----	109.1	115.3	105.6	111.2	109.3	112.9
Commodities -----	118.4	118.6	118.1	118.3	118.2	118.3
Commodities less food -----	118.0	118.3	117.4	117.8	117.1	117.3
Durables -----	117.1	118.0	116.4	117.2	116.9	117.4
Services 3/ -----	130.0	130.1	129.8	129.9	129.4	129.4
Services less rent 3/ -----	132.5	132.6	132.3	132.4	131.9	131.9
Transportation services 3/ -----	133.9	134.5	133.8	134.4	134.1	134.5
All items less shelter -----	120.3	120.6	120.2	120.4	120.2	120.3
All items less food -----	123.5	123.7	123.1	123.3	122.7	122.9
All items less medical care -----	122.1	122.2	121.7	121.9	121.6	121.8
Services less medical care 3/ -----	129.3	129.4	128.9	129.1	128.5	128.6
Insurance and finance 3/ -----	140.1	140.5	139.2	139.6	139.0	139.2
Purchasing Power of Consumer Dollar:						
1967=\$1.00 -----	\$0.817	\$0.816	\$0.818	\$0.817	\$0.819	\$0.818
1957-59=\$1.00 -----	0.702	0.701	0.704	0.703	0.704	0.704
Seasonally Adjusted Indexes						
Transportation -----	118.9	120.2	119.4	120.6	119.7	120.5
Private transportation -----	116.8	118.2	117.3	118.8	117.7	118.5
New cars -----	107.5	113.6	108.9	114.6	111.3	115.0
Commodities -----	118.2	118.4	118.1	118.3	118.1	118.2
Commodities less food -----	117.5	117.8	117.5	117.9	117.5	117.7
Durables -----	116.7	117.6	116.9	117.7	117.0	117.5

1/ Revised values are the official indexes.

2/ Reflects adjustment for refunds on new car sales in the August 15-31 period.

3/ Includes auto finance charges which are imputed to changes in new car prices.

TABLE 10. U.S. City Average Consumer Price Index: Selected Percentage Changes For Components Affected by Refunds of Federal Excise Tax on New Automobiles: Revised 1/

	Percent change to October 1971 from:			Percent change to September 1971 from:			Percent change to August 1971 from:		
	1 Month ago	3 Months ago	1 Year ago	1 Month ago	3 Months ago	1 Year ago	1 Month ago	3 Months ago	1 Year ago
All items -----	0.2	0.5	3.6	0.1	0.6	4.0	0.2	1.1	4.4
Transportation -----	.6	-.2	3.6	-.6	-.8	5.0	-.2	.4	5.9
Private transportation -----	.7	-.2	3.4	-.8	-1.0	4.7	-.1	.3	5.7
New cars -----	3.3	-4.1	-1.5	-3.4	-7.3	.5	-4.0	-4.0	3.6
Commodities -----	.3	.3	3.1	-.1	.2	3.4	.1	.9	3.9
Commodities less food -----	.5	.9	3.1	.3	.3	3.5	.1	.4	4.0
Durables -----	.6	-.3	2.8	-.4	-.9	3.5	-.5	.3	4.2
Services 3/ -----	.2	.9	4.8	.3	1.2	5.1	.5	1.5	5.5
Services less rent 3/ -----	.2	1.0	4.7	.3	1.3	5.2	.5	1.6	5.6
Transportation services 3/ -	.1	-.3	6.4	-.2	-.2	7.2	-.1	.8	8.3
All items less shelter -----	.1	.3	3.7	0	.3	4.2	.2	.8	4.6
All items less food -----	.3	.9	3.9	.3	.7	4.3	.2	.9	4.7
All items less medical care 3/ -	.3	.6	3.6	.1	.5	3.8	.2	1.0	4.2
Services less medical care 3/ -----	.3	1.1	4.4	.3	1.2	4.7	.5	1.4	5.1
Insurance and finance 3/ -----	.6	1.3	1.4	.1	1.1	1.5	.5	1.5	2.3
Seasonally Adjusted									
Transportation -----	-.4	-.3		-.3	.2		.3	.9	
Private transportation -----	-.4	-.4		-.3	.1		.3	.7	
New cars -----	-1.3	-6.6		-2.2	-5.1		-3.3	-2.5	
Commodities -----	.1	.3		0	.3		.2	.8	
Commodities less food -----	0	.3		0	.4		.3	.8	
Durables -----	-.2	-.6		-.1	-.3		-.3	.4	

1/ Revised values are the official percentage changes.

2/ Reflects adjustment for refunds on new car sales in the August 15-31 period.

3/ Includes auto finance charges which are imputed to changes in new car prices.

TABLE 11. Consumer Price Index--All Items and Selected Group Indexes affected by refunds of Federal excise tax on new automobiles, U.S. city average and selected areas, August, September, and October 1971, revised and previously published.

(1967=100 unless otherwise indicated)

Area ^{1/}	All Items		All Items (1957-59=100)		Transportation		Private Transportation	
	Revised ^{2/}	Previously Published	Revised ^{2/}	Previously Published	Revised ^{2/}	Previously Published	Revised ^{2/}	Previously Published
August ^{3/}								
U.S. City Average-----	122.1	122.2	142.0	142.1	119.3	120.1	117.3	118.1
Chicago-----	121.5	121.6	138.0	138.1	126.7	127.3	121.3	122.0
Detroit-----	122.8	122.9	141.0	141.2	116.0	116.8	113.3	114.2
Los Angeles-Long Beach-----	119.5	119.6	140.5	140.6	115.9	116.5	116.1	116.7
New York-Northeastern N.J.-----	126.9	126.9	151.0	151.1	129.8	130.6	124.9	125.9
Philadelphia-----	123.6	123.7	144.3	144.5	123.6	124.4	120.7	121.7
Buffalo-----	122.8	122.9	134.9 ^{4/}	135.1 ^{4/}	118.2	119.2	117.3	118.4
Cleveland-----	123.2	123.3	139.0	139.1	124.9	125.7	121.1	122.1
Dallas-----	122.7	122.8	132.6 ^{4/}	132.7 ^{4/}	119.8	120.3	117.9	118.3
Milwaukee-----	121.4	121.5	137.0	137.2	119.6	120.5	116.9	117.9
San Diego-----	120.7	120.9	126.8 ^{5/}	127.0 ^{5/}	115.4	116.4	115.0	116.0
Seattle-----	117.6	117.7	138.2	138.3	109.0	109.5	108.9	109.6
Washington, D.C.-----	123.5	123.6	143.8	144.0	123.9	124.6	119.7	120.6
September								
U.S. City Average-----	122.2	122.4	142.1	142.3	118.6	119.8	116.4	117.8
Chicago-----	121.7	121.8	138.2	138.4	125.7	126.7	120.1	121.2
Detroit-----	122.8	123.1	141.2	141.4	114.0	115.4	111.2	112.6
Los Angeles-Long Beach-----	120.0	120.1	141.1	141.3	116.1	117.0	116.2	117.2
New York-Northeastern N.J.-----	127.3	127.5	151.5	151.7	128.7	130.0	123.5	125.1
Philadelphia-----	124.6	124.8	145.5	145.7	122.5	123.8	119.4	121.0
Atlanta-----	122.0	122.3	140.3	140.6	114.7	116.4	112.8	114.6
Baltimore-----	124.4	124.5	144.4	144.6	117.8	119.0	117.2	118.5
Cincinnati-----	121.4	121.5	137.8	137.9	120.2	121.2	116.5	117.7
Honolulu-----	121.2	121.3	130.6 ^{6/}	130.8 ^{6/}	121.8	122.9	123.4	124.7
Kansas City-----	121.5	121.9	144.2	144.7	118.1	119.9	116.2	118.1
St. Louis-----	120.5	120.7	140.8	140.9	119.1	120.2	116.7	117.9
San Francisco-Oakland-----	120.9	121.1	143.9	144.1	117.9	119.4	116.9	118.5
October								
U.S. City Average-----	122.4	122.6	142.4	142.6	119.3	120.6	117.2	118.6
Chicago-----	121.7	121.8	138.2	138.4	124.9	126.0	119.2	120.4
Detroit-----	122.8	123.0	141.1	141.3	114.0	115.5	111.1	112.8
Los Angeles-Long Beach-----	120.3	120.5	141.5	141.7	117.3	118.3	117.5	118.5
New York-Northeastern N.J.-----	127.5	127.7	151.7	151.9	129.4	130.9	124.4	126.2
Philadelphia-----	125.0	125.2	146.0	146.2	123.3	124.8	120.4	122.1
Boston-----	124.5	124.6	149.1	149.3	121.2	122.1	118.4	119.5
Houston-----	122.4	122.7	140.0	140.4	113.1	114.9	110.8	112.7
Minneapolis-St. Paul-----	123.4	123.7	143.1	143.3	114.9	116.5	114.3	116.0
Pittsburgh-----	122.9	123.1	141.3	141.5	120.5	121.6	117.8	119.1

^{1/} Area coverage includes the urban portion of the corresponding Standard Metropolitan Statistical Areas (SMSA) except for New York and Chicago where the more extensive Standard Consolidated Areas (SCA) are used. Area definitions are those established for the 1960 Census and do not include revisions made since 1960.

^{2/} Revised values are the official indexes.

^{3/} Reflects adjustments for refunds on new car sales in the August 15-31 period.

^{4/} November 1963=100.

^{5/} February 1965=100.

^{6/} December 1963=100.

Reliability of Percent Changes in the CPI

A system of "replicated" samples introduced into the index structure in the 1964 revision permits an estimate of sampling error for the CPI. ^{1/} The table below shows standard errors for monthly, quarterly, and annual percent changes in the CPI for all items and for nine commodity groupings based on 1970 averages. The figures may be interpreted as follows: the chances are about 95 out of 100 that the percent change in the CPI as computed differs from the corresponding "complete coverage" change by less than twice the standard error.

Because the CPI is rounded to one decimal place, some ambiguity may arise in interpreting small index changes. The table below indicates, for example, that a month-to-month change of 0.1 percent in the all-items CPI is significant. Because of rounding, however, a change of this size in the published index might result from a much smaller change in the unrounded value. Hence, any particular change of 0.1 percent may or may not be significant. On the other hand, a published change of 0.2 percent is almost always significant, regardless of the time period to which it relates.

Average Standard Errors of Percent Changes in the
CPI Based on 1970 Data

Component	Standard Error		
	Monthly Change	Quarterly Change	Annual Change
All Items -----	.04	.06	.09
Food at home -----	.08	.13	.18
Food away from home -----	.11	.21	.36
Housing -----	.06	.10	.19
Apparel -----	.15	.26	.29
Transportation -----	.10	.16	.19
Medical care -----	.12	.15	.29
Personal care -----	.13	.23	.34
Reading and recreation -----	.11	.17	.23
Other goods and services -----	.10	.16	.41

This replaces the table of average errors based on 1969 data which was included in the CPI report through December 1970.

^{1/} The method of deriving these estimates is described in a paper by Marvin Wilkerson, "Measurement of Sampling Error in the Consumer Price Index," Journal of the American Statistical Association, September 1967.

Brief Explanation of the CPI

The Consumer Price Index (CPI) measures average changes in prices of goods and services usually bought by urban wage earners and clerical workers, both families and single persons living alone. It is based on prices of about 400 items which were selected to represent the movement of prices of all goods and services purchased by wage earners and clerical workers. Prices for these items are obtained in urban portions of 39 Standard Metropolitan Statistical Areas (SMSA's) and 17 smaller cities, which were chosen to represent all urban places in the United States, including Alaska and Hawaii. They are collected from grocery and department stores, hospitals, filling stations, and other types of stores and service establishments which wage earners and clerical workers patronize.

Prices of foods, fuels, and a few other items are obtained every month in all 56 locations. Prices of most other commodities and services are collected every month in the 5 largest SMSA's and every 3 months in other SMSA's and cities. Mail questionnaires are used to obtain local transit fares, public utility rates, newspaper prices, fuel prices, and certain other items which change in price infrequently. Prices of most other goods and services are obtained by personal visits of the Bureau's trained representatives.

In calculating the index, price changes for the various items in each location are averaged together with weights which represent their importance in the spending of all wage earners and clerical workers. SMSA and city data are then combined in the total index with weights based on the 1960 populations of SMSA's and cities they represent. Index numbers are computed on the base 1967=100, and are also available on the base of 1957-59=100.

The national index (the United States city average) includes prices from the 23 SMSA's for which separate indexes are published in this report, as well as from the following additional locations:

Alabama - Florence	Louisiana - Baton Rouge*	Ohio - Findlay
Alaska - Anchorage	Maine - Portland*	Oklahoma - Mangum
California - Bakersfield*	Massachusetts - Southbridge	Oregon - Klamath Falls
Colorado - Denver*	Michigan - Niles	Pennsylvania - Lancaster*
Connecticut - Hartford*	Minnesota - Crookston	South Carolina - Union
Florida - Orlando*	Mississippi - Vicksburg	Tennessee - Nashville*
Indiana - Indianapolis*	New Jersey - Millville	Texas - Austin*
Indiana - Logansport	New York - Kingston	Texas - McAllen
Illinois - Champaign-Urbana*	North Carolina - Durham*	Utah - Orem
Iowa - Cedar Rapids*	North Dakota - Devils Lake	Virginia - Martinsville
Kansas - Wichita*	Ohio - Dayton*	Wisconsin - Green Bay*

*Standard Metropolitan Statistical Area

Comparisons of indexes for individual SMSA's show only that prices in one location changed more or less than in another. The SMSA indexes cannot be used to measure differences in price levels or in living costs between areas.

A description of the index and historical tables of index numbers for the United States city average and for 23 large SMSA's are available on request to the Bureau of Labor Statistics, Washington, D. C. 20212 or any of its regional offices.

Bureau of Labor Statistics Regional Offices

REGION I — Boston

Mr. Wendell D. Macdonald
Regional Director
U.S. Department of Labor
Bureau of Labor Statistics
1603-A Federal Office Building
Boston, Massachusetts 02203
Phone: 223-6727
(Area Code 617)

Connecticut
Maine
Massachusetts
New Hampshire
Rhode Island
Vermont

REGION II — New York

Mr. Herbert Bienstock
Regional Director
U.S. Department of Labor
Bureau of Labor Statistics
341 Ninth Avenue, Rm. 1003
New York, New York 10001
Phone: 971-5401
(Area Code 212)

New Jersey
New York
Puerto Rico
Virgin Islands

REGION III — Philadelphia

Mr. Frederick W. Mueller
Regional Director
U.S. Department of Labor
Bureau of Labor Statistics
Fann Square Building, Room 406
1317 Filbert Street
Philadelphia, Pennsylvania 19107
Phone: 597-7816
(Area Code 215)

Delaware
District of Columbia
Maryland
Pennsylvania
Virginia
West Virginia

REGION IV — Atlanta

Mr. Brunswick A. Bagdon
Regional Director
U.S. Department of Labor
Bureau of Labor Statistics
1371 Peachtree Street NE.
Atlanta, Georgia 30309
Phone: 526-5416
(Area Code 404)

Alabama
Florida
Georgia
Kentucky
Mississippi
North Carolina
South Carolina
Tennessee

REGION V — Chicago

Mr. William E. Rice
Regional Director
U.S. Department of Labor
Bureau of Labor Statistics
8th Floor, 300 S. Wacker Drive
Chicago, Illinois 60606
Phone: 353-1880
(Area Code 312)

Illinois
Indiana
Michigan
Minnesota
Ohio
Wisconsin

REGION VI — Dallas

Mr. Jack F. Strickland
Regional Director
U.S. Department of Labor
1100 Commerce St., Rm. 6B7
Dallas, Tex. 75202
Phone: 749-3641
(Area Code 214)

Arkansas
Louisiana
New Mexico
Oklahoma
Texas

REGIONS VII and VIII — Kansas City

Mr. Elliott A. Browar
Regional Director
U.S. Department of Labor
Bureau of Labor Statistics
Federal Office Building
911 Walnut Street
Kansas City, Missouri 64106
Phone: 374-2378
(Area Code 816)

Region VII

Iowa
Kansas
Missouri
Nebraska

Region VIII

Colorado
Montana
North Dakota
South Dakota
Utah
Wyoming

REGIONS IX and X — San Francisco

Mr. Charles A. Roumasset
Regional Director
U.S. Department of Labor
Bureau of Labor Statistics
450 Golden Gate Avenue
Box 36017
San Francisco, California 94102
Phone: 556-3178
(Area Code 415)

Region IX

Arizona
California
Hawaii
Nevada

Region X

Alaska
Idaho
Oregon
Washington