

U. S. DEPARTMENT OF LABOR
J. D. Hodgson, Secretary

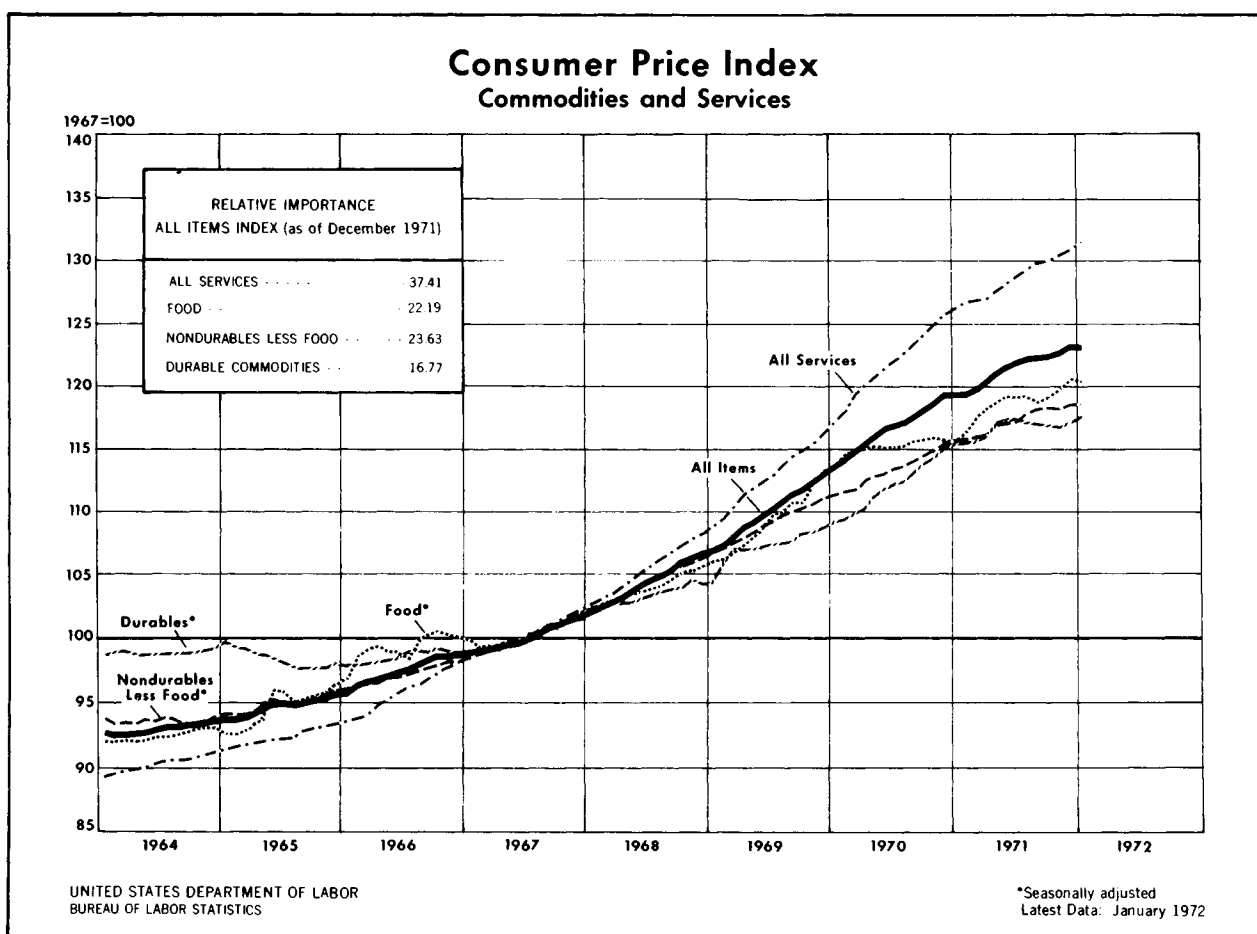
BUREAU OF LABOR STATISTICS
Geoffrey H. Moore, Commissioner

OFFICE OF PRICES
AND LIVING CONDITIONS

Joel Popkin, Assistant Commissioner

the consumer price index

*a monthly report
on consumer price movements
including statistical tables
and technical notes.*



THE CONSUMER PRICE INDEX
FOR
JANUARY 1972

The Consumer Price Index rose 0.1 percent in January to 123.2 percent of its 1967 base. Price increases for meats, new cars, and some services were offset largely by price decreases for fresh vegetables, clothing, used cars and gasoline. The January index was 3.4 percent higher than it was a year ago.

After seasonal adjustment, the January increase was 0.3 percent. In the 5 months since the Economic Stabilization Program was announced in August, the CPI has risen at a seasonally adjusted annual rate of 2.6 percent. During the 6 months from February to August, the period immediately preceding the wage-price-rent freeze, the annual rate of increase was 4.1 percent. (See page 4 for an explanation of the effect of the Economic Stabilization Program on the January CPI.)

The January increase of 0.3 percent on a seasonally adjusted basis compares with 0.4 percent in December and an average monthly increase of a little more than 0.1 percent in the period from August to November, which roughly corresponds to Phase I of the Economic Stabilization Program.

Table A. Percent changes in CPI and components, selected periods

Month	Changes from preceding month							Changes in all items at seasonally adjusted compound annual rate		
	All items		Food		Commodities less food		Serv-ices	From 3 mos. ago	From 6 mos. ago	From 12 mos. ago
	Unadj.	Seas. adj.	Unadj.	Seas. adj.	Unadj.	Seas. adj.	Unadj.			
January 1971	0.1	0.3	0.2	0	-0.3	0.2	0.6	4.5	4.9	5.2
February ---	.2	.2	.3	.5	0	-.1	.2	4.0	4.8	4.8
March -----	.3	.2	.9	.9	.3	.2	0	2.8	4.1	4.6
April -----	.3	.3	.7	.9	.3	.2	.2	2.8	3.6	4.3
May -----	.5	.6	.3	.2	.7	.7	.6	4.2	4.1	4.4
June -----	.6	.5	.8	.5	.4	.3	.5	5.3	4.0	4.5
July -----	.2	.2	.5	.1	-.1	.1	.5	4.9	3.9	4.4
August -----	.2	.3	.2	.1	.1	.3	.5	4.0	4.1	4.4
September --	.1	.1	-.8	-.3	.3	0	.3	2.6	3.9	4.0
October ----	.2	.1	-.2	0	.5	0	.2	2.4	3.6	3.6
November ---	.2	.2	.1	.7	.1	0	.3	1.7	2.8	3.5
December ---	.4	.4	1.1	.7	0	.3	.3	2.8	2.7	3.4
January 1972	.1	.3	0	-.2	-.3	.2	.5	3.3	2.8	3.4

Food

The index of food purchased in grocery stores, which usually increases in January, was unchanged. (See Table B.) Prices of items subject to regulation under the Economic Stabilization Program rose substantially in January. These increases were offset by a sharp drop in the prices of fresh vegetables and eggs, which are exempt from regulation.

Table B. Monthly percent changes, for the CPI and components

	Not Seasonally Adjusted			Seasonally Adjusted Except*		
	January 1972	December 1971	November 1971	January 1972	December 1971	November 1971
CPI: All items -----	0.1	0.4	0.2	0.3	0.4	0.2
Food -----	0	1.1	0.1	-0.2	0.7	0.7
Food at home -----	0	1.3	0.1	-0.3	0.9	0.9
Cereal and bakery products*	-0.1	-0.3	-0.2	-	-	-
Meats, poultry, and fish ----	1.5	0.7	-0.3	1.2	1.2	0.8
Dairy products -----	0.3	0.2	-0.1	0.3	0.1	0
Fruits and vegetables -----	-2.8	5.6	1.9	-4.2	4.3	1.5
Other food at home -----	-0.3	0.9	-0.5	-0.6	-0.4	0.8
Food away from home* -----	0.2	0.1	0.2	-	-	-
Commodities less food -----	-0.3	0	0.1	0.2	0.3	0
Nondurables less food -----	-0.6	0.1	0	0.2	0.3	-0.1
Apparel commodities -----	-1.6	-0.2	0.3	-0.1	0.1	0.1
Nondurables less food and apparel* -----	0	0.3	-0.3	-	-	-
Durables 1/ -----	0.1	-0.2	0.3	0.3	0.3	0.1
New cars -----	1.6	0.7	0.5	2.1	1.5	-0.2
Used cars* -----	-1.8	-2.7	-1.3	-	-	-
Household durables -----	0	0.1	0	0	0.1	0
Services* -----	0.5	0.3	0.3	-	-	-
Rent* -----	0.2	0.3	0.2	-	-	-
Household less rent -----	0.7	0.5	0.5	0.9	0.7	0.5
Transportation -----	1.0	0.1	0.1	0.3	0	-0.1
Medical care -----	0.4	0.4	0.1	0.2	0.3	0.2
Other -----	0.2	0.1	0.2	0.2	0.1	0.2

* Unadjusted series only.

1/ Includes items other than those listed below.

Meat prices rose considerably more than seasonally; increases were 2.2 percent for beef and veal and 1.9 percent for pork. Large advances in livestock prices and strong consumer demand, particularly for beef, resulted in higher meat prices at the wholesale and retail levels in late 1971 and early 1972. Despite price declines at wholesale in December, chicken prices rose more than seasonally in January reflecting greater demand for poultry at least in part as a result of higher meat prices.

Prices of dairy products, which declined slightly from July through November, increased 0.2 percent in December and 0.3 percent in January. A sharp rise at the wholesale level late in 1971 contributed to higher retail prices for all dairy products except ice cream.

In the fruits and vegetable category, the increase of 0.4 percent in fresh fruit prices in January was typical for this time of the year. Processed fruits and vegetables prices rose 0.3 percent. However, fresh vegetable prices, which climbed over 8 percent in November and 17 percent in December, declined 8.1 percent in January as supplies from winter crops became available. Winter crop supplies reached retail markets later than usual this year, and consequently much larger than seasonal increases occurred in November and December and prices decreased in January rather than seasonally increasing.

Prices for cereal and bakery products decreased 0.1 percent in January, after declining about 0.3 percent in each of the 3 preceding months. Promotional sales on white bread were reported in various areas of the country, but not as widely as in December. Corn flake prices continued to decline. Flour prices, on the other hand, rose in January after moving down significantly in the fourth quarter of 1971.

Egg prices declined 2.3 percent because of increased production during December and decreased demand following the Christmas holidays.

The index for food away from home—restaurant meals and snacks—rose 0.2 percent in January. After the Economic Stabilization Program was announced, the monthly increase in this index became progressively smaller each month, from 0.5 percent in August to 0.1 percent in December.

Commodities less food

January clearance sales on apparel and housefurnishings, and lower prices for gasoline and used cars accounted for much of the decline in the index for nonfood commodities. The decrease of 0.3 percent, however, was smaller than usual for January. On a seasonally adjusted basis, the index of nonfood commodities rose 0.2 percent. New car prices rose in January instead of moving down seasonally.

Apparel prices declined 1.6 percent; they usually decrease about this much in January. In addition to clearance sales on winter items, there were sales in many areas on year-round items such as men's suits and slacks and women's blouses. Widespread clearance sales resulted in the first January decline in footwear prices since 1965. The index for apparel commodities increased 2.8 percent from August to November of 1971, before decreasing 0.2 percent in December. Prices normally increase seasonally between August and November and decline from November through January.

The decline of 2.0 percent for textile housefurnishings was more than the 1.5 percent decrease in January of 1971. Prices were reduced more this year for sheets, bedspreads, and pillows. Also, modest reductions in prices were reported for slipcovers, curtains, and drapery fabric.

The household durables index for January was unchanged from December, as is usual, after edging up slightly in the fourth quarter of 1971. Prices of furniture and bedding decreased 0.2 percent because of the usual half-yearly promotional clearances. Prices of floor coverings decreased 0.3 percent. Hard-surface floor coverings fell 0.8 percent, mostly because of lower prices for vinyl roll goods. Prices of soft-surface floor coverings decreased 0.2 percent, as a result of closeout sales especially on nylon and polyester lines. Household appliance prices were unchanged in January. Prices rose, however, for other household durable goods such as dinnerware, flatware, and table lamps. Prices for dinnerware, which usually are marked down in January, increased 0.6 percent. The dock strike and higher import prices due to the devaluation of the dollar contributed to the increase.

Home prices and home maintenance and repair goods such as paints increased in January. Small increases were posted for housekeeping supplies and toilet goods.

Gasoline prices declined 0.6 percent, to a level of 0.9 percent below January 1971; cities showing decreases greatly exceeded those where price restorations occurred.

New car prices, which usually decline after November, increased 0.7 percent in December of 1971 and 1.6 percent this January. These increases were primarily the result of higher retail list prices. In late November and early December, the auto manufacturers increased prices by about 2.6 percent to cover higher production costs. The Wholesale Price Index (WPI) for autos rose 2.4 percent in December. Since the new prices pertained to new shipments and did not include cars held in inventory, only a portion of the increase was reflected in the December CPI. Most of the increase was reflected in the January CPI.

Used car prices, which had declined almost steadily in the second half of 1971, continued to move down in January of this year. The decline of 1.8 percent was smaller than the January declines in the past 3 years.

The increase of 0.8 percent in the index for tobacco products was due to price increases and higher State and local taxes for cigarettes.

Services

The services index rose 0.5 percent in January, compared with 0.3 percent in December and November. Over half the January increase in the services index was due to higher property taxes and auto registration fees--items which are exempt from price control--as well as higher local-transit fares in New York and some other cities.

The index for household services less rent rose 0.7 percent in January. Residential property taxes rose 2.5 percent, the largest increase since April 1970; it reflected annual changes in 7 cities including New York and Chicago. In addition, utility rates continued to advance. Telephone rates were up 1.0 percent. Charges for gas also increased 1.0 percent due to rate increases and adjustments for fuel costs. Electricity charges rose 0.5 percent, primarily due to higher fuel costs. Charges for baby sitters increased 0.5 percent, more than in the 3 preceding months. However, the increases of 0.2 percent for domestic services and for home maintenance and repair services were about the same as in the last 3 months of 1971. For the third consecutive month, property insurance rates showed no change and mortgage interest rates declined.

After holding almost level in the last 7 months of 1971, the index for transportation services increased 1.0 percent in January. Local-transit fares, which rose 3.4 percent for the 12 months ending in December 1971, advanced 4 percent in January. Local-transit fares usually increase in January. The increase this year was the sharpest since January 1970, when they rose over 12 percent. Higher fares in New York City contributed greatly to the January rise this year as they did in January 1970. Auto registration fees increased 2.7 percent. Auto repair charges rose 0.9 percent compared with monthly increases of 0.2 percent in the last 4 months of 1971. Higher prices for replacement parts and increased labor costs contributed to the increase. Parking fees rose 0.5 percent, slightly more than in the preceding 2 months; both municipal and private parking fees moved up. Increased labor costs and a new tax on public and private parking facilities in Chicago were factors contributing to higher parking fees. Auto insurance rates declined, on the other hand, primarily due to the introduction of Personal Injury Protection--"no fault insurance"--in several States.

The January increase of 0.4 percent in the index for medical care services was the same as it was in December of 1971 and more moderate than the monthly increases before the Economic Stabilization Program was announced. Professional fees continued to move up at a modest pace--0.2 percent--for the third consecutive month. On the other hand, hospital charges, which leveled out in October and November of last year rose 0.5 percent in December and 1.0 percent this January--about the same as in January of 1971.

Impact of Economic Stabilization Program

The increase in the January CPI is not affected by removal of the effect of items identified as exempt from regulation under Phase II of the Economic Stabilization Program. Since declines in raw agricultural products, used cars, and mortgage interest rates were offset by increases in taxes and house prices, the January increase remains 0.1 percent after removal of these items.

This 0.1 percent January increase for nonexempt items results from increases and decreases in several major components of the index. Substantial increases in the nonexempt grocery store food and services components were only partially offset by a decrease in the apparel component. Higher meat prices were largely responsible for the increase in nonexempt food. The rise in services resulted from increases in local transit fares and higher charges

for gas, electricity, and telephone services. The decrease in apparel prices reflected seasonal sales on winter clothing.

The above analysis is based on the contribution to the change between December and January of individual index components weighted by their relative importance in the index market basket. Accordingly, the Bureau of Labor Statistics analyzed the 120,000 individual prices directly collected by the BLS for use in the index. Approximately 80 percent of the 120,000 quotations represent monthly comparisons. As shown in table C, 75 percent of these prices remained unchanged, 11 percent decreased, and 14 percent increased between December and January. Excluding raw agricultural products, the proportion of prices showing no change from the previous month was smaller than in any month since the analysis began in October; the proportions increasing and decreasing both rose from December. Among service prices, there was a substantial increase both in the proportion rising and falling; the proportion of nonfood commodity prices decreasing almost doubled. The percentage distribution in January is compared with those in October, November, and December of last year in table C.

Table C. Percent distribution of monthly price comparisons

	October 1971	November 1971	December 1971	January 1972
All items -----	100.0	100.0	100.0	100.0
Increases* -----	11.0	11.3	15.7	14.0
Decreases -----	10.4	9.3	7.3	10.7
No change -----	78.6	79.4	77.0	75.3
All items excluding raw agricultural products -----	100.0	100.0	100.0	100.0
Increases* -----	7.1	7.0	9.5	12.2
Decreases -----	7.7	6.6	5.9	6.5
No change -----	85.2	86.4	84.6	81.3
Food at home -----	100.0	100.0	100.0	100.0
Increases* -----	12.3	12.7	17.4	14.7
Decreases -----	11.0	10.4	8.1	11.3
No change -----	76.7	76.9	74.5	74.0
Raw agricultural products -----	100.0	100.0	100.0	100.0
Increases* -----	29.4	32.1	46.5	22.8
Decreases -----	23.3	22.1	14.2	31.5
No change -----	47.3	45.8	39.3	45.7
Other food -----	100.0	100.0	100.0	100.0
Increases* -----	7.9	7.7	10.3	12.7
Decreases -----	7.8	7.5	6.6	6.3
No change -----	84.3	84.8	83.1	81.0
Commodities less food -----	100.0	100.0	100.0	100.0
Increases* -----	7.4	6.7	6.4	7.4
Decreases -----	6.9	6.1	5.2	10.0
No change -----	85.7	87.2	88.4	82.6
Services -----	100.0	100.0	100.0	100.0
Increases* -----	1.2	1.8	5.8	12.2
Decreases -----	7.6	1.0	1.5	5.4
No change -----	91.2	97.2	92.7	82.4

* Regulations of the Economic Stabilization Program permit certain types of increases but it is not possible from data used in the CPI to determine whether allowable increases accounted for all increases shown in the above table.

The January index also includes about 23,000 price comparisons to January from periods prior to December. About 17,500 of these cover the quarterly span from October to January. A little more than 9 percent of these prices increased, compared with about 7-1/2 percent in last month's index. In addition, almost 5,500 rental units were surveyed for the index in January and almost 1.5 percent of these increased between December and January. Of the total units surveyed, 1.2 percent showed increases in excess of 2.5 percent and almost 1 percent had increases in excess of 5 percent.

A NOTE ABOUT CALCULATING INDEX CHANGES

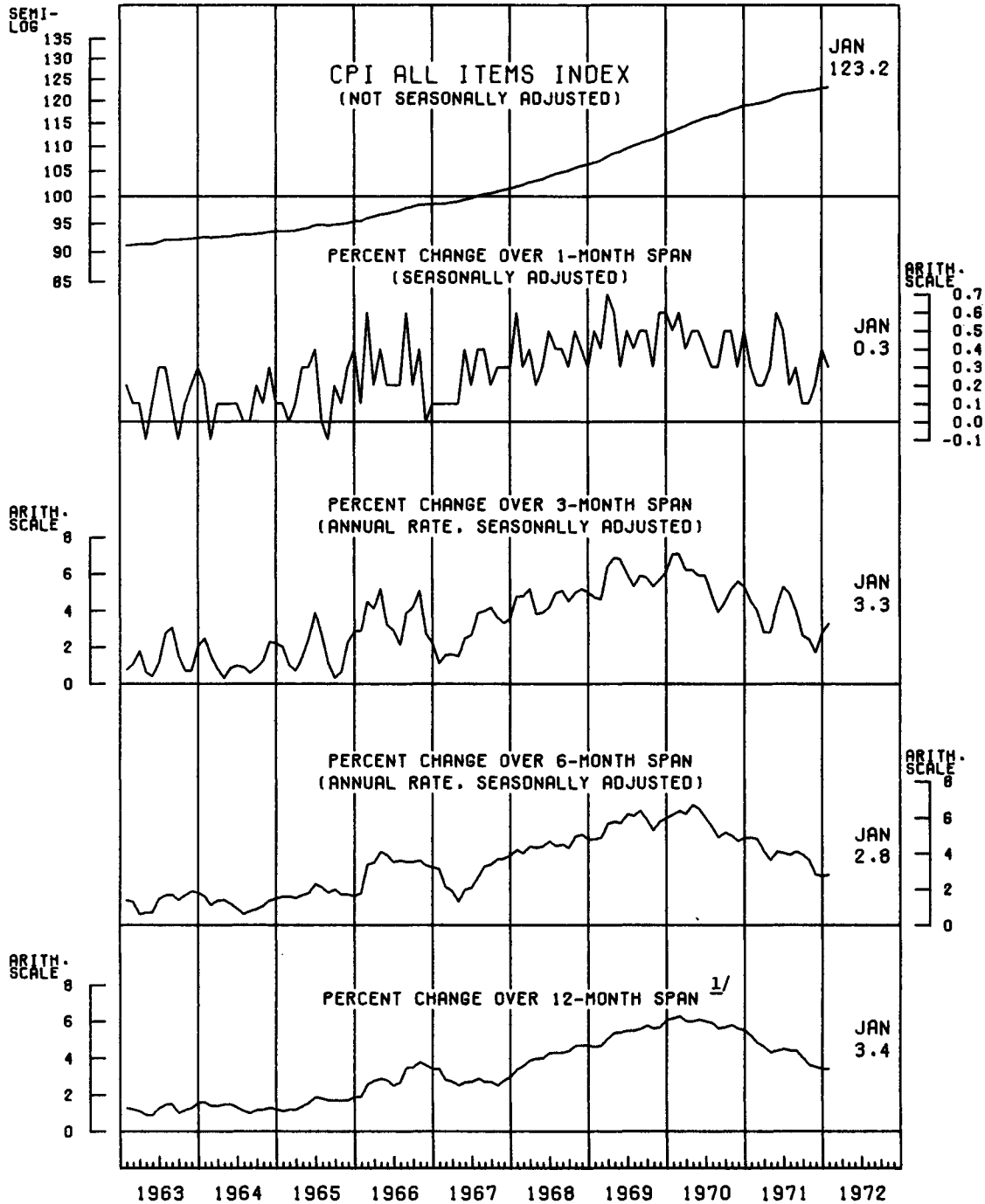
Effective with the February 1970 release, and continuing thereafter, percent changes expressed as annual rates will be computed according to the standard formula for compound growth rates. These data indicate what the percent change would be if the current rate were maintained for a 12-month period.

Movements of the indexes from one to another are usually expressed as percent changes rather than changes in the index points because index point changes are affected by the level of the index in relation to its base period while percent changes are not. The following example illustrates the computation of index point and percent changes:

Index Point Change		Percent Change
January 1972 CPI (1967=100)	123.2	Index point difference divided by the index for the previous period: $\frac{123.2 - 123.1}{123.1} \times 100 = 0.1$
less December index	<u>123.1</u>	
index point difference =	0.1	

Effective with the July 1970 release, and continuing thereafter, seasonally adjusted percent changes in the U.S. All Items Index will be based on seasonal adjustment factors and seasonally adjusted indexes carried to two decimal places. This procedure will help to eliminate rounding error in the percent changes.

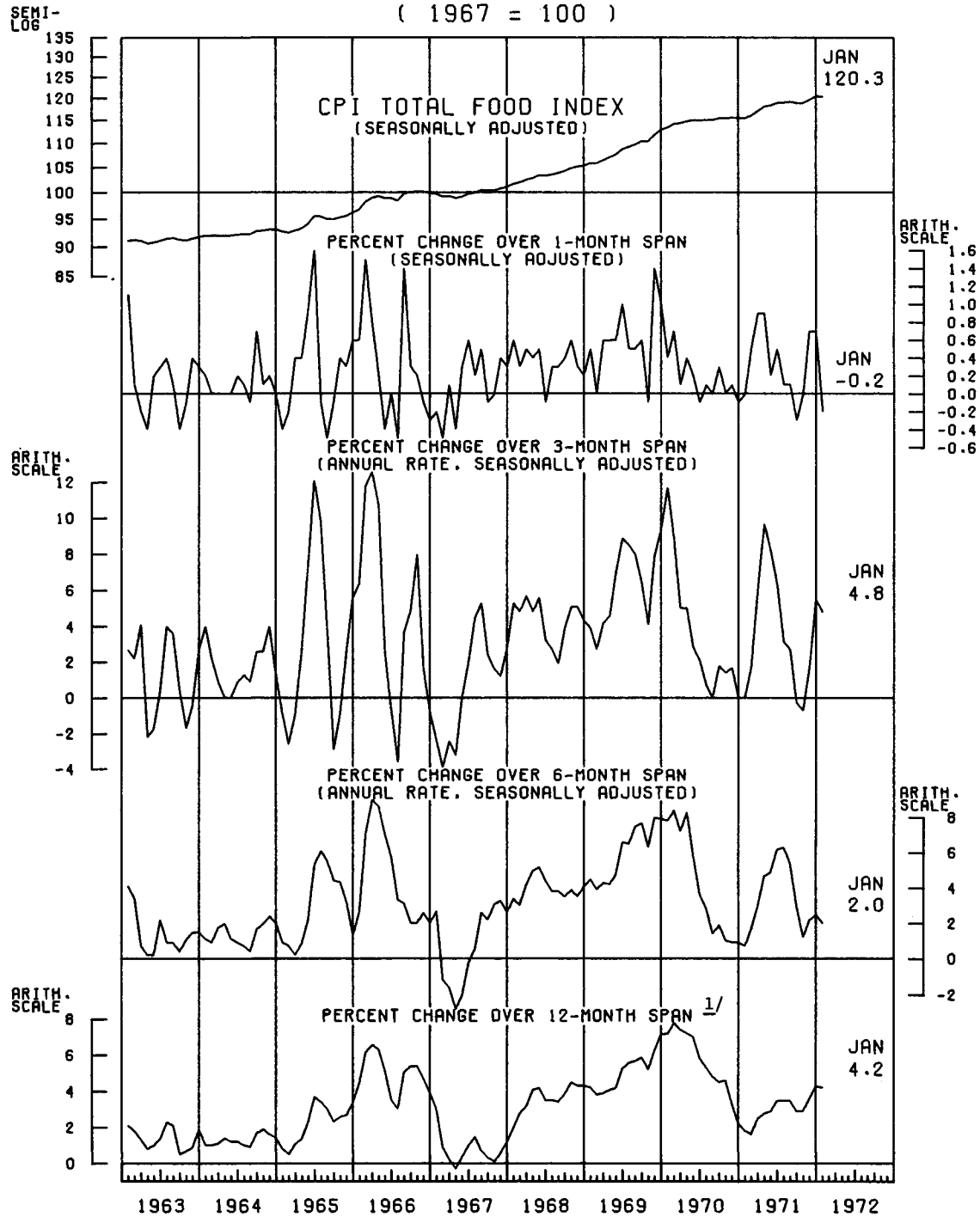
ALL ITEMS INDEX AND ITS RATE OF CHANGE 1963-72 (1967 = 100)



^{1/} Computed from the unadjusted series.

UNITED STATES DEPARTMENT OF LABOR
BUREAU OF LABOR STATISTICS

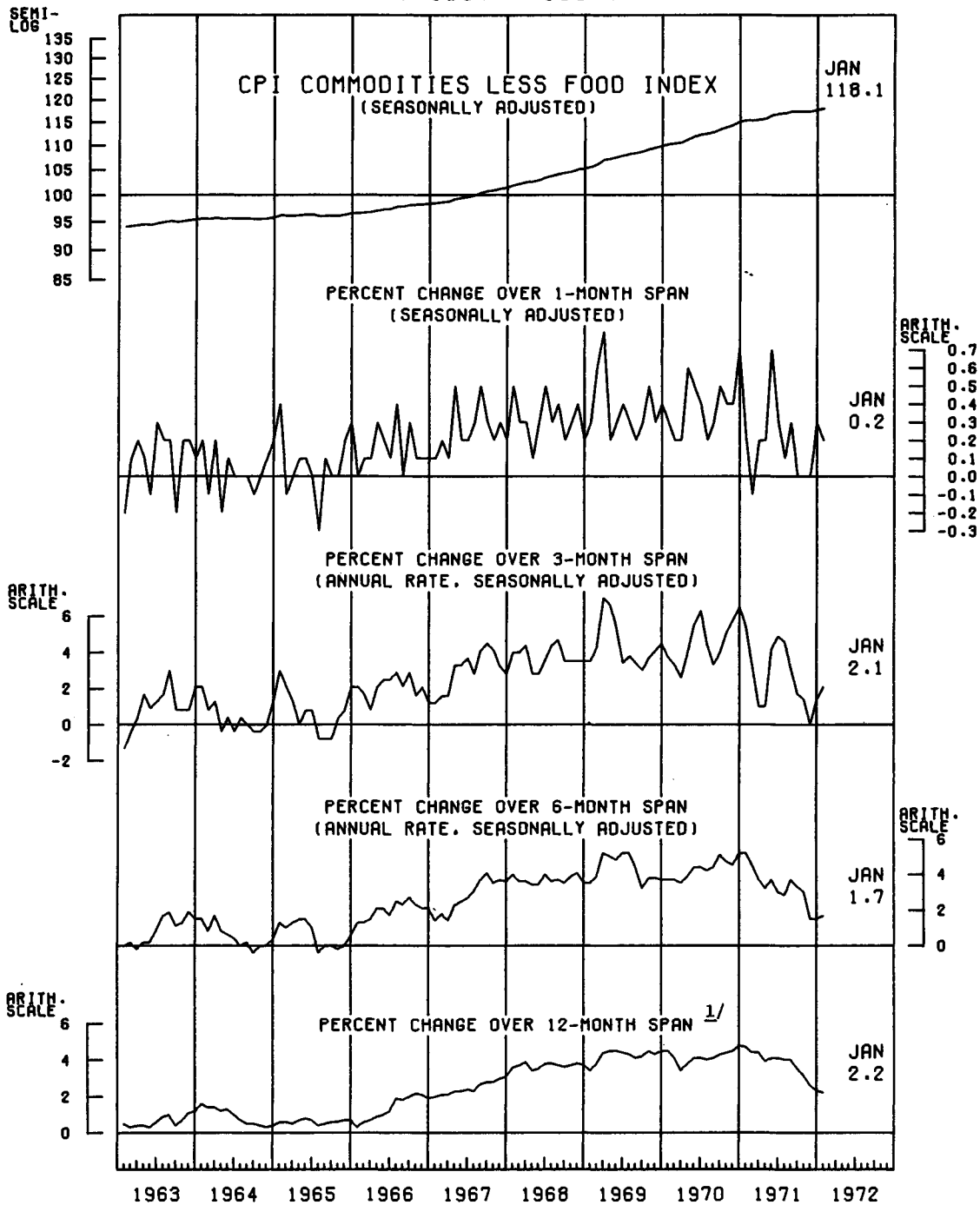
TOTAL FOOD INDEX AND ITS RATE OF CHANGE 1963-72 (1967 = 100)



^{1/} Computed from the unadjusted series.

UNITED STATES DEPARTMENT OF LABOR
BUREAU OF LABOR STATISTICS

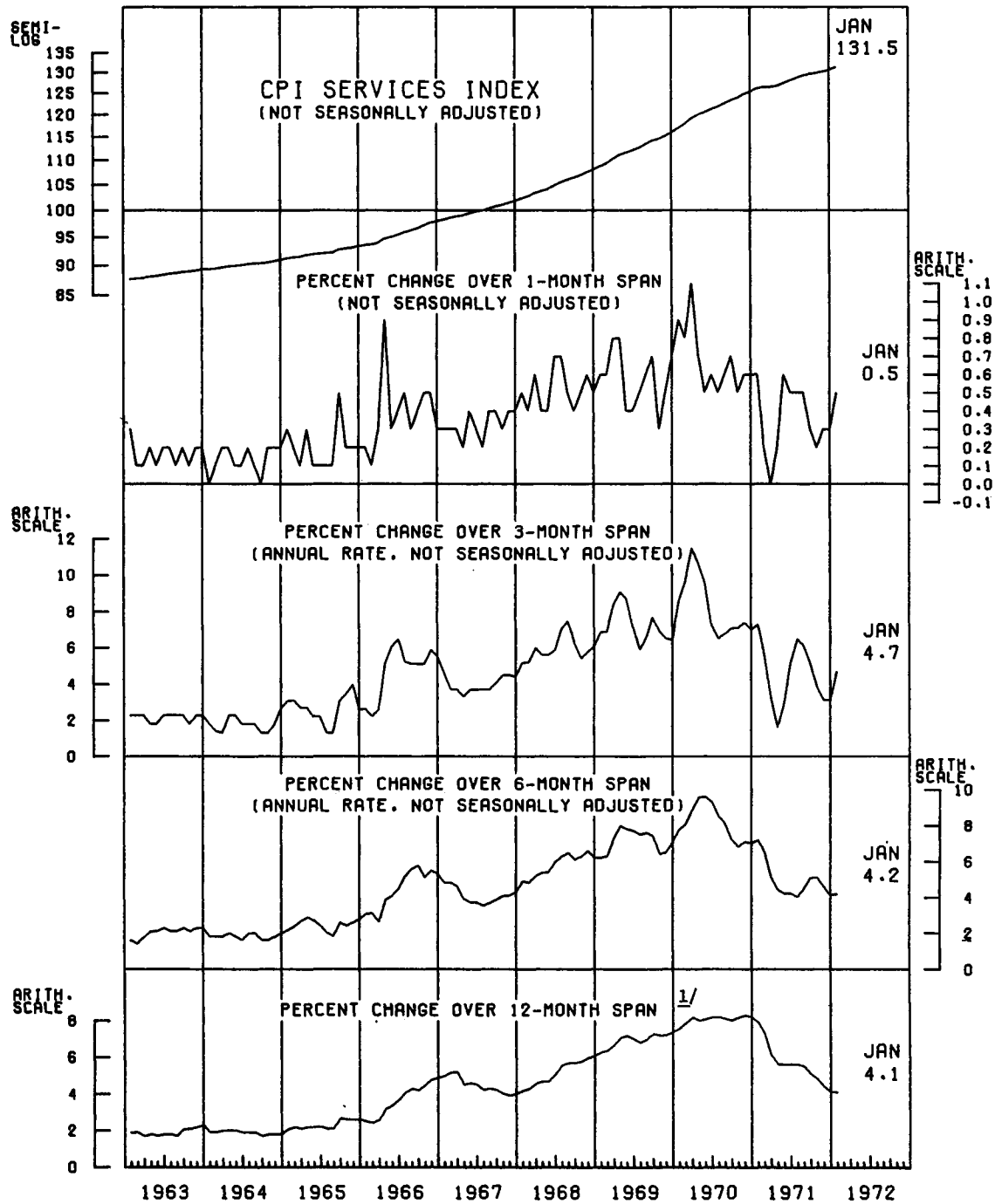
COMMODITIES LESS FOOD INDEX AND ITS RATE OF CHANGE 1963-72 (1967 = 100)



1/ Computed from the unadjusted series.

UNITED STATES DEPARTMENT OF LABOR
BUREAU OF LABOR STATISTICS

SERVICES INDEX AND ITS RATE OF CHANGE 1963-72
(1967 = 100)



^{1/} Computed from the unadjusted series.

UNITED STATES DEPARTMENT OF LABOR
BUREAU OF LABOR STATISTICS

TABLE 1. Consumer Price Index--United States city average for urban wage earners and clerical workers, January 1972

Group	(Unadjusted, unless otherwise indicated)				Percent change to January 1972 from:		
	Indexes (1967=100)				(unless otherwise specified)		
	January 1972	December 1971	October 1971	January 1971	1 Month Ago	3 Months Ago	1 Year Ago
All items -----	123.2	123.1	122.4	119.2	0.1	0.7	3.4
All items (1957-59=100) -----	143.3	143.1	142.4	138.6	-	-	-
Food -----	120.3	120.3	118.9	115.5	0	1.2	4.2
Food at home -----	118.2	118.2	116.6	113.4	0	1.4	4.2
Cereals and bakery products -----	113.7	113.8	114.3	112.4	-.1	-.5	1.2
Meats, poultry, and fish -----	120.7	118.9	118.4	113.1	1.5	1.9	6.7
Dairy products -----	116.4	116.1	116.0	113.9	.3	.3	2.2
Fruits and vegetables -----	120.9	124.4	115.6	109.6	-2.8	4.6	10.3
Other foods at home -----	116.2	116.6	116.2	117.0	-.3	0	-.7
Food away from home -----	128.6	128.3	128.0	123.4	.2	.5	4.2
Housing -----	127.3	126.8	125.9	122.7	.4	1.1	3.7
Shelter 1/ -----	132.3	131.6	130.6	128.0	.5	1.3	3.4
Rent -----	117.1	116.9	116.4	112.9	.2	.6	3.7
Homeownership 2/ -----	137.8	137.0	135.7	133.4	.6	1.5	3.3
Fuel and utilities 3/ -----	118.7	117.9	116.3	112.1	.7	2.1	5.9
Fuel oil and coal -----	118.7	118.1	117.8	116.7	.5	.8	1.7
Gas and electricity -----	119.0	118.2	115.7	111.5	.7	2.9	6.7
Household furnishings and operation -----	119.5	119.6	119.5	115.4	-.1	0	3.6
Apparel and upkeep 4/ -----	120.2	121.8	121.6	117.6	-1.3	-1.2	2.2
Men's and boys' -----	119.9	121.6	121.8	118.0	-1.4	-1.6	1.6
Women's and girls' -----	120.2	123.2	122.7	117.4	-2.4	-2.0	2.4
Footwear -----	122.7	123.1	122.7	119.8	-.3	0	2.4
Transportation -----	119.0	118.6	119.3	117.5	.3	-.3	1.3
Private -----	116.4	116.3	117.2	115.8	.1	-.7	.5
New cars -----	112.2	110.4	109.1	115.4	1.6	2.8	-2.8
Used cars -----	105.3	107.2	111.7	107.0	-1.8	-5.7	-1.6
Gasoline -----	106.7	107.3	108.8	107.7	-.6	-1.9	-.9
Public -----	143.4	139.7	139.3	133.9	2.6	2.9	7.1
Health and recreation -----	124.3	123.9	123.5	119.8	.3	.6	3.8
Medical care -----	130.5	130.1	129.6	124.9	.3	.7	4.5
Personal care -----	118.1	117.9	117.9	115.3	.2	.2	2.4
Reading and recreation -----	121.4	121.1	120.5	117.3	.2	.7	3.5
Other goods and services -----	123.5	123.0	122.6	118.9	.4	.7	3.9
<u>Seasonally Adjusted:</u>							
Food -----	120.3	120.5	118.9	-	-0.2	1.2	-
Apparel and upkeep -----	121.0	121.0	120.8	-	0	.2	-
Transportation -----	118.8	118.5	118.9	-	.3	-.1	-
<u>Special Groups:</u>							
All items less food -----	124.0	123.9	123.5	120.3	.1	.4	3.1
All items less medical care -----	122.8	122.7	122.1	118.9	.1	.6	3.3
Commodities less food -----	117.7	118.1	118.0	115.2	-0.3	-0.3	1.2
Commodities -----	118.7	118.9	118.4	115.4	-.2	.3	2.9
Nondurables -----	119.2	119.5	118.8	115.4	-.3	.3	3.3
Nondurables less food -----	118.1	118.8	118.7	115.3	-.6	-.5	2.4
Apparel commodities -----	120.3	122.2	122.0	117.8	-1.6	-1.4	2.1
Durables -----	117.3	117.2	117.1	115.2	.1	.2	1.8
Household durables -----	113.7	113.7	113.6	111.5	0	.1	2.0
Services -----	131.5	130.8	130.0	126.3	.5	1.2	4.1
Services less rent -----	134.1	133.3	132.5	128.7	.6	1.2	4.2
Services less medical care -----	130.8	130.1	129.3	125.9	.5	1.2	3.9
Insurance and finance -----	142.3	141.3	140.1	140.5	.7	1.6	1.3
Utilities and public transportation -----	124.6	123.1	121.6	116.7	1.2	2.5	6.8
Housekeeping and home maintenance services --	141.5	141.2	140.6	131.5	.2	.6	7.6
Medical care services -----	135.8	135.3	134.6	129.3	.4	.9	5.0
<u>Purchasing Power of Consumer Dollar:</u>							
1967=\$1.00 -----	\$0.812	\$0.812	\$0.817	\$0.839	0	-.6	-3.2
1957-59=\$1.00 -----	.698	.699	.702	.722	-	-	-

1/ Also includes hotel and motel rates not shown separately.

2/ Includes home purchase, mortgage interest, taxes, insurance, and maintenance and repairs.

3/ Also includes telephone, water, and sewerage service not shown separately.

4/ Also includes infants' wear, sewing materials, jewelry, and apparel upkeep services not shown separately.

Note: Index applies to month as a whole, not to any specific date.

TABLE 2. Consumer Price Index--The United States and selected areas for urban wage earners and clerical workers, all items most recent index and percent changes from selected dates

Area ^{1/}	Pricing Schedule ^{2/}	Indexes			Percent change from:		
		1967=100	1957-59=100	Other bases			
		January 1972			December 1971	October 1971	January 1971
U.S. City Average -----	M	123.2	143.3		0.1	0.7	3.4
Chicago -----	M	122.1	138.7		-.2	.3	2.5
Detroit -----	M	124.2	142.7		.4	1.1	3.2
Los Angeles-Long Beach ---	M	120.2	141.3		.1	-.1	3.0
N.Y. -Northeastern N.J. ---	M	128.4	152.8		.3	.7	4.8
Philadelphia -----	M	124.7	145.6		-.2	-.2	2.8
		January 1972				October 1971	January 1971
Boston -----	1	124.9	149.6			.3	3.5
Houston -----	1	123.2	140.9			.7	3.3
Minneapolis-St. Paul -----	1	123.8	143.5			.3	3.1
Pittsburgh -----	1	123.2	141.7			.2	3.4
		November 1971				August 1971	November 1970
Buffalo -----	2	123.1		^{3/} 135.3		.2	3.7
Cleveland -----	2	124.4	140.4			1.0	2.6
Dallas -----	2	122.4		^{3/} 132.3		-.2	2.9
Milwaukee -----	2	120.9	136.5			-.4	2.6
San Diego -----	2	120.9		^{4/} 127.1		.2	2.7
Seattle -----	2	117.6	138.2			0	2.3
Washington -----	2	124.2	144.7			.6	4.1
		December 1971				September 1971	December 1970
Atlanta -----	3	123.5	142.0			1.2	3.4
Baltimore -----	3	125.1	145.3			.6	3.6
Cincinnati -----	3	121.9	138.4			.4	2.9
Honolulu -----	3	121.1		^{5/} 130.6		-.1	4.7
Kansas City -----	3	121.4	144.1			-.1	2.0
St. Louis -----	3	120.9	141.3			.3	2.8
San Francisco-Oakland ----	3	121.8	145.0			.7	2.8

^{1/} Area coverage includes the urban portion of the corresponding Standard Metropolitan Statistical Area (SMSA) except for New York and Chicago where the more extensive Standard Consolidated Areas are used. Area definitions are those established for the 1960 Census and do not include revisions made since 1960.

^{2/} Foods, fuels, and several other items priced every month in all cities; most other goods and services priced as indicated:

M - Every month.

1 - January, April, July, and October.

2 - February, May, August, and November.

3 - March, June, September, and December.

^{3/} November 1963=100.

^{4/} February 1965=100.

^{5/} December 1963=100.

Note: The Consumer Price Index cannot be used for measuring differences in living costs among areas; it indicates price change within areas. Estimates of differences in living costs among areas are found in the family budgets.

TABLE 3. Consumer Price Index--The United States and selected areas 1/ for urban wage earners and clerical workers, major groups percent change from December 1 to January 1972

Group	U.S. City Average	Chicago	Detroit	Los Angeles-Long Beach	New York-Northeastern New Jersey	Philadelphia
All items -----	.1	- .2	.4	.1	.3	- .2
Food -----	0	.2	.4	.8	0	.2
Housing -----	.4	.3	.2	- .1	.8	0
Apparel and upkeep -----	- 1.3	- 3.5	- 2.2	- .7	- 2.5	- 2.6
Transportation -----	.3	- 1.3	1.7	- .3	2.6	.2
Health and recreation -----	.3	1.3	.8	.3	.3	0
Medical care -----	.3	.4	1.2	.2	.6	0
Personal care -----	.2	(2/)	(2/)	(2/)	(2/)	(2/)
Reading and recreation -----	.2	.4	.2	.4	.2	- .1
Other goods and services -----	14	4.0	.7	.3	0	0

1/ See footnote 1, table 2.

2/ Not available.

TABLE 4. Consumer Price Index--United States city average for urban wage earners and clerical workers for selected groups, seasonally adjusted

(1967=100)

Group	Indexes			Percent changes to: January 1972	
	January 1972	December 1971	October 1971	From: 1 Month Ago	3 Months Ago
Food -----	120.3	120.5	118.9	- 0.2	1.2
Food at home -----	118.2	118.6	116.6	- .3	1.4
Meats, poultry, and fish -----	121.6	120.2	117.8	1.2	3.2
Dairy products -----	116.2	115.8	115.7	.3	.4
Fruits and vegetables -----	121.6	126.9	119.9	- 4.2	1.4
Other foods at home -----	114.5	115.2	114.8	- .6	- .3
Fuel and utilities <u>1/</u> -----	118.6	117.7	116.6	.8	1.7
Fuel oil and coal -----	117.9	117.7	118.0	.2	- .1
Apparel and upkeep <u>2/</u> -----	121.0	121.0	120.8	0	.2
Men's and boys' -----	120.5	120.9	121.1	- .3	- .5
Women's and girls' -----	121.5	121.6	121.1	- .1	- .3
Footwear -----	123.1	122.9	122.5	.2	.5
Transportation -----	118.8	118.5	118.9	.3	- .1
Private -----	116.5	115.8	116.8	.6	- .3
New cars -----	111.2	108.9	107.5	2.1	3.4
Commodities -----	118.9	118.8	118.2	.1	.6
Commodities less food -----	118.1	117.9	117.5	.2	.5
Nondurables -----	119.3	119.4	118.7	- .1	.5
Nondurables less food -----	118.6	118.4	118.2	.2	.3
Apparel commodities -----	121.1	121.2	121.0	- .1	.1
Durables -----	117.4	117.1	116.7	.3	.6

1/ Also includes telephone, water, and sewerage service not shown separately.

2/ Also includes infants' wear, sewing materials, jewelry, and apparel upkeep services not shown separately.

TABLE 5. Consumer Price Index--United States and selected areas 1/ for urban wage earners and clerical workers, commodity groups
January 1972 index and percent changes from October 1971

Group	U.S. City Average	Boston	Chicago	Detroit	Houston	Los Angeles- Long Beach	Minn- neapolis- St. Paul	New York	Phila- delphia	Pitts- burgh
Indexes (1967=100)										
All items -----	123.2	124.9	122.1	124.2	123.2	120.2	123.8	128.4	124.7	123.2
Food -----	120.3	119.5	119.8	119.7	121.9	117.5	120.5	125.2	122.2	120.9
Food at home -----	118.2	117.5	118.2	118.2	118.0	116.3	118.2	122.0	119.5	119.1
Cereals and bakery products -----	113.7	112.1	115.0	115.1	111.4	110.7	121.2	115.2	115.4	116.1
Meats, poultry, and fish -----	120.7	123.6	121.6	123.6	121.1	120.1	120.5	125.3	120.9	118.8
Dairy products -----	116.4	114.8	115.7	116.2	115.1	114.3	114.8	120.4	120.1	119.7
Fruits and vegetables -----	120.9	117.8	118.4	114.5	122.7	119.2	117.4	125.7	120.6	122.1
Other foods at home -----	116.2	113.0	115.8	115.0	116.3	113.8	117.0	118.2	118.4	118.9
Food away from home -----	128.6	126.5	126.3	126.5	135.7	120.8	130.8	135.1	133.5	131.8
Housing -----	127.3	131.1	122.9	131.3	126.8	125.2	129.8	133.1	127.4	127.2
Shelter -----	132.3	139.9	126.8	141.0	132.7	128.1	136.9	139.1	135.9	134.1
Rent -----	117.1	125.9	111.8	(2/)	110.4	117.7	120.4	(2/)	122.3	116.0
Homeownership -----	137.8	146.2	133.6	145.5	140.4	131.2	139.7	152.1	139.5	139.2
Fuel and utilities -----	118.7	114.4	115.2	113.5	115.5	124.3	117.9	121.7 3/	113.9	117.9
Fuel oil and coal -----	118.7	117.1	113.4	113.9	-----	-----	115.1	120.4	111.9	-----
Gas and electricity -----	119.0	120.1	115.7	115.6	122.0	4/127.1	121.5	118.1	116.0	121.3
Household furnishings and operation -----	119.5	123.8	115.9	113.3	122.0	115.6	116.7	124.3	120.2	118.6
Apparel and upkeep -----	120.2	122.0	116.3	114.5	123.8	118.2	117.6	119.3	116.9	121.9
Men's and boys' -----	119.9	119.0	113.9	113.2	116.1	116.4	118.9	119.0	121.4	118.0
Women's and girls' -----	120.2	123.2	117.4	111.1	131.7	120.2	115.0	117.2	110.7	128.2
Footwear -----	122.7	125.1	116.7	121.2	126.1	121.8	124.2	120.3	120.1	118.3
Transportation -----	119.0	120.0	123.7	116.6	114.1	114.5	117.1	132.3	124.1	119.5
Private -----	116.4	117.0	117.7	113.9	111.5	114.5	116.7	124.5	121.0	116.6
Public -----	143.4	137.8	161.3	149.0	156.4	115.3	125.0	162.4	142.3	138.3
Health and recreation -----	124.3	126.5	125.6	127.1	126.0	119.2	124.4	128.2	128.2	124.1
Medical care -----	130.5	132.9	129.6	139.2	132.0	127.0	124.5	138.6	139.6	125.1
Personal care -----	118.1	120.7	(2/)	118.6	121.5	(2/)	118.7	(2/)	118.4	115.2
Reading and recreation -----	121.4	127.4	121.3	121.7	121.1	112.7	126.3	125.5	125.5	121.3
Other goods and services -----	123.5	5/122.0	130.1	121.7	125.8	118.4	124.7	125.8	124.0	129.9
Percent changes from October 1971 to January 1972										
All items -----	0.7	0.3	0.3	1.1	0.7	- 0.1	0.3	0.7	- 0.2	0.2
Food -----	1.2	.9	.8	1.6	1.4	1.9	1.2	.7	1.0	1.6
Food at home -----	1.5	.9	.9	1.7	1.9	2.2	1.5	.9	1.1	1.8
Cereals and bakery products -----	- .5	.6	- 3.5	.7	- .9	- .4	- .5	- .2	- 2.0	1.3
Meats, poultry, and fish -----	1.9	2.0	3.1	2.6	4.0	3.0	1.9	1.1	1.3	1.7
Dairy products -----	.3	- .3	.1	1.1	- .3	- .1	- 2.0	1.5	.3	.3
Fruits and vegetables -----	4.7	1.8	2.2	3.2	4.0	6.3	6.7	2.7	3.8	4.7
Other foods at home -----	0	- .5	- .6	.2	.3	1.0	.7	- .8	1.6	1.3
Food away from home -----	.5	.6	.4	.8	.2	1.2	.4	.1	.5	.3
Housing -----	1.1	.7	1.2	.9	.6	- .2	- .8	1.6	- .8	.1
Shelter -----	1.3	.9	1.0	1.2	.4	- .5	- 1.1	2.4	- 1.9	- .2
Rent -----	.6	1.7	6/ .4	(2/)	.1	6/ .3	.3	(2/)	(6/)	.3
Homeownership -----	1.5	.6	1.3	1.3	.5	- .8	- 1.3	3.7	- 2.6	- .3
Fuel and utilities -----	2.1	.9	3.3	2.0	3.2	2.0	.9	1.6	3.0	1.1
Fuel oil and coal -----	.8	0	.2	0	---	---	- .6	.2	0	---
Gas and electricity -----	2.9	2.1	6.0	3.1	5.4	1.7	1.4	3.8	3.5	.4
Household furnishings and operation -----	0	.2	.1	- .5	0	- .3	- .5	- .5	- .4	.1
Apparel and upkeep -----	-1.2	- 2.1	- 3.2	- 2.8	- .8	- 1.0	- 1.4	- 2.9	- 3.7	- 2.6
Men's and boys' -----	-1.6	- 2.1	- 3.6	- 5.8	- .8	- .8	- .3	- 4.4	- 3.0	- 2.4
Women's and girls' -----	-2.0	- 4.1	- 5.6	- 2.7	- 2.9	- 2.3	- 4.1	- 4.4	- 7.3	- 3.2
Footwear -----	0	2.5	- .8	- .4	2.1	.3	.9	- .2	- 2.8	- 3.2
Transportation -----	- .3	- 1.0	- 1.0	2.3	.9	- 2.4	1.9	2.2	.6	- .8
Private -----	- .7	- 1.2	- 1.3	2.5	.6	- 2.6	2.1	.1	.5	- 1.0
Public -----	2.9	- .3	.1	.1	4.2	1.6	0	9.1	1.1	0
Health and recreation -----	.6	1.0	1.7	2.0	.2	.4	1.1	.5	.2	1.3
Medical care -----	.7	2.0	.8	2.2	.4	.2	- .1	1.2	.2	1.3
Personal care -----	.2	.6	(2/)	1.7	1.3	(2/)	- .3	(2/)	.7	- .2
Reading and recreation -----	.7	.8	.9	1.2	- .2	.1	.8	.6	.3	3.1
Other goods and services -----	.7	0	4.3	2.7	.1	1.5	3.6	0	(2/)	0

1/ See footnote 1, table 2.

2/ Not available.

3/ Corrected indexes: Dec. 1971=113.9; 1971 Annual Average=112.4.

4/ Corrected indexes: Dec. 1970=117.0; Jan. 1971=119.0; Feb. 1971=119.0; Mar. 1971=119.0; Apr. 1971=120.1; May 1971=120.2; June 1971=120.7; July 1971=125.0; Aug. 1971=125.0; Sept. 1971=125.0; Oct. 1971=125.0; Nov. 1971=125.0; Dec. 1971=126.8; 1971 Annual Average = 122.5.

5/ Corrected indexes: Jan. 1971=114.5; Apr. 1971=115.4; July 1971=121.0; Oct. 1971=122.0.

6/ Change from November 1971.

TABLE 5-A. Consumer Price Index--United States and selected areas 1/ for urban wage earners and clerical workers, commodity groups, 1971 annual average indexes and percent changes, 1970-71

Group	Boston	Houston	Minneapolis	Pittsburg
(Indexes 1967=100 unless otherwise specified)				
All items -----	122.8	120.9	121.7	121.5
All items (1957-59=100)-----	149.6	140.9	143.5	141.7
Food -----	118.5	118.8	119.2	118.9
Food at home -----	116.8	115.1	116.9	117.1
Cereals and bakery products -----	112.6	111.7	121.0	114.0
Meats, poultry, and fish -----	120.2	115.4	117.7	115.0
Dairy products -----	115.0	114.5	114.8	119.2
Fruits and vegetables -----	119.1	113.3	115.2	122.3
Other foods at home -----	113.7	114.8	116.7	116.9
Food away from home -----	124.3	132.0	129.2	129.8
Housing -----	126.8	124.6	126.4	125.5
Shelter -----	133.5	130.3	132.3	131.8
Rent 2/ -----	122.7	109.8	118.6	114.2
Homeownership -----	138.1	137.4	134.6	136.7
Fuel and utilities -----	112.0	112.5	115.2	116.7
Fuel oil and coal -----	114.9	-	115.5	-
Gas and electricity -----	115.9	117.6	118.5	120.9
Household furnishings and operation -----	123.0	120.3	116.5	118.4
Apparel and upkeep -----	121.8	122.0	118.1	119.6
Men's and boys' -----	120.7	113.1	120.5	118.4
Women's and girls' -----	122.3	130.8	116.5	121.1
Footwear -----	123.0	123.2	122.4	120.0
Transportation -----	120.7	113.1	115.5	120.0
Private -----	117.8	110.8	115.0	117.4
Public -----	137.9	150.3	124.4	134.3
Health and recreation -----	124.0	123.2	122.4	121.8
Medical care -----	130.4	130.1	123.8	122.6
Personal care -----	120.4	117.5	117.9	114.8
Reading and recreation -----	125.3	119.1	124.2	117.3
Other goods and services -----	118.8	121.4	119.7	128.9
Percent Changes from 1970-71				
All items -----	5.2	3.5	3.6	4.4
Food -----	3.1	2.9	2.3	2.9
Food at home -----	2.5	1.8	1.8	2.4
Cereals and bakery products -----	4.5	4.3	4.9	4.8
Meats, poultry, and fish -----	2.4	-1.4	0.2	-0.9
Dairy products -----	3.1	1.4	-0.9	5.0
Fruits and vegetables -----	2.3	5.3	5.3	6.1
Other foods at home -----	1.1	2.4	1.7	1.2
Food away from home -----	4.8	6.6	4.5	6.0
Housing -----	6.7	3.4	3.8	5.6
Shelter -----	7.2	2.6	3.6	6.8
Rent -----	6.3	2.7	3.9	4.8
Homeownership -----	7.6	2.5	3.5	7.4
Fuel and utilities -----	6.8	4.3	6.1	5.5
Fuel oil and coal -----	5.9	-	2.4	-
Gas and electricity -----	9.8	4.7	7.7	6.3
Household furnishings and operation -----	4.9	4.5	3.6	3.1
Apparel and upkeep -----	3.7	1.8	2.4	3.6
Men's and boys' -----	1.9	-1.7	3.2	3.7
Women's and girls' -----	4.1	3.0	1.0	5.4
Footwear -----	4.9	2.5	4.5	2.6
Transportation -----	6.1	4.1	3.5	5.4
Private -----	6.8	3.0	3.5	4.1
Public -----	2.3	21.6	3.2	14.8
Health and recreation -----	5.9	5.1	4.5	4.3
Medical care -----	4.8	5.9	5.2	4.2
Personal care -----	4.1	2.0	1.9	4.2
Reading and recreation -----	7.7	5.1	6.4	4.9
Other goods and services -----	6.2	6.2	2.9	3.9

1/ See footnote 1, table 2.

2/ 1971 Annual Average Indexes for Chicago, Los Angeles-Long Beach, and Philadelphia are 110.4, 116.3, and 119.1 respectively.

TABLE 6. Consumer Price Index--United States and selected areas for urban wage earners and clerical workers, food and its subgroups, January 1972 indexes and percent changes from December 1971

Area 1/	Total food	Food at home						Food away from home
		Total	Cereals and bakery products	Meats, poultry, and fish	Dairy products	Fruits and vegetables	Other foods at home	
(Indexes 1967=100)								
U.S. City Average -----	120.3	118.2	113.7	120.7	116.4	120.9	116.2	128.6
Atlanta -----	120.6	117.9	114.5	117.4	116.3	126.9	116.5	129.0
Baltimore -----	121.9	119.8	116.1	121.9	118.0	121.9	118.4	130.1
Boston -----	119.5	117.5	112.1	123.6	114.8	117.8	113.0	126.5
Buffalo -----	121.1	119.7	117.1	121.2	117.5	122.3	118.2	129.2
Chicago -----	119.8	118.2	115.0	121.6	115.7	118.4	115.8	126.3
Cincinnati -----	120.5	119.0	114.1	119.4	117.8	123.9	117.7	126.2
Cleveland -----	118.9	117.7	107.5	120.9	119.1	121.2	115.0	125.7
Dallas -----	120.8	117.6	113.4	119.5	111.4	124.0	116.0	132.6
Detroit -----	119.7	118.2	115.1	123.6	116.2	114.5	115.0	126.5
Honolulu -----	120.7	117.8	105.6	119.5	116.8	128.2	116.3	129.1
Houston -----	121.9	118.0	111.4	121.1	115.1	122.7	116.3	135.7
Kansas City -----	120.9	118.5	116.1	119.8	124.2	116.4	115.9	128.4
Los Angeles-Long Beach -	117.5	116.3	110.7	120.1	114.3	119.2	113.8	120.8
Milwaukee -----	117.0	115.1	116.9	117.7	113.1	113.6	113.0	(2/)
Minneapolis-St. Paul ---	120.5	118.2	121.2	120.5	114.8	117.4	117.0	130.8
New York -----	125.2	122.0	115.2	125.3	120.4	125.7	118.2	135.1
Philadelphia -----	122.2	119.5	115.4	120.9	120.1	120.6	118.4	133.5
Pittsburgh -----	120.9	119.1	116.1	118.8	119.7	122.1	118.9	131.8
St. Louis -----	119.7	117.3	120.3	116.1	119.5	122.0	111.6	131.3
San Diego -----	120.0	117.0	111.4	123.7	113.1	118.9	111.9	(2/)
San Francisco-Oakland --	119.1	117.9	111.5	120.6	114.7	123.3	115.3	123.7
Seattle -----	118.4	116.3	110.2	118.0	115.3	119.4	115.4	125.1
Washington -----	120.9	116.7	116.2	114.2	110.6	123.1	120.4	131.7
Percent changes December 1971 to January 1972								
U.S. City Average -----	0	0	-0.1	1.5	0.3	-2.8	-0.3	0.2
Atlanta -----	.8	.9	1.1	2.9	-.1	-2.1	.5	.5
Baltimore -----	-1.1	-1.3	-1.5	.4	0	-6.2	-.9	0
Boston -----	-.3	-.5	-.5	1.5	.3	-4.8	-.6	0
Buffalo -----	.2	.3	-1.3	2.3	.2	-1.3	-.4	-.1
Chicago -----	.2	.2	0	1.0	.4	-1.2	-.4	.2
Cincinnati -----	-.2	-.3	.9	2.0	-.4	-3.3	-1.3	.3
Cleveland -----	-.3	-.3	-.5	1.7	-1.3	-4.3	.3	0
Dallas -----	.2	.3	-.5	2.0	-.1	-1.2	-.3	-.2
Detroit -----	.4	.5	.6	1.8	.9	-1.5	-.5	.1
Honolulu -----	-.2	-.3	.9	-1.4	2.2	-.9	.2	.1
Houston -----	.3	.4	-.1	2.5	-.1	-1.9	-.2	.2
Kansas City -----	.1	.2	-.8	1.7	.1	-.5	-.9	-.1
Los Angeles-Long Beach -	.8	.6	.5	1.9	.1	-1.5	1.1	1.1
Milwaukee -----	-.2	-.2	.7	.7	-.2	-2.2	-.6	(2/)
Minneapolis-St. Paul ---	-.1	-.1	-.2	1.0	-.2	-1.0	-.8	.2
New York -----	0	-.1	0	1.3	1.4	-3.5	-.9	.1
Philadelphia -----	.2	.0	.3	.7	.5	-2.8	1.1	.5
Pittsburgh -----	0	0	.2	1.1	.6	-2.1	-.4	0
St. Louis -----	.3	.3	0	1.9	.3	-1.9	-.2	.3
San Diego -----	.4	.6	.7	2.5	-.1	-3.1	1.2	(2/)
San Francisco-Oakland --	.2	.3	1.4	1.6	-.1	-3.2	.5	.1
Seattle -----	.2	.2	-.5	1.7	-.2	-2.7	.8	0
Washington -----	-.9	-1.4	-1.8	-1.0	0	-4.0	-.7	.5

^{1/} See footnote 1, table 2.

^{2/} Not available.

TABLE 7. Consumer Price Index--United States city average for urban wage earners and clerical workers, food items January 1972. indexes and percent changes from selected dates

Indexes (1967=100)

Item or Group	Index		Percent change to January 1972 from--		January 1971
	January 1972		December 1971		
	Unadjusted	Seasonally adjusted	Unadjusted	Seasonally adjusted	Unadjusted
Total food -----	120.3	120.3	0	- 0.2	4.2
Food away from home -----	128.6	-	.2	-	4.2
Restaurant meals -----	128.3	-	.2	-	4.2
Snacks -----	130.0	-	.3	-	3.9
Food at home -----	118.2	118.2	0	- .3	4.2
Cereals and bakery products -----	113.7	-	.1	-	1.2
Flour -----	100.8	-	.3	-	.6
Cracker meal -----	132.2	-	.2	-	6.5
Corn flakes -----	102.5	-	- .5	-	- 5.8
Rice -----	110.3	-	.3	-	2.1
Bread, white -----	111.2	-	- .2	-	- .6
Bread, whole wheat -----	118.9	-	.3	-	3.3
Cookies -----	109.2	-	- .1	-	3.4
Layer cake -----	119.6	-	- 1.0	-	.8
Cinnamon rolls -----	119.0	-	.4	-	1.9
Meats, poultry, and fish -----	120.7	121.6	1.5	1.2	6.7
Meats -----	121.1	122.0	1.7	1.2	7.3
Beef and veal -----	130.8	131.6	2.2	1.5	10.4
Steak, round -----	130.8	131.2	3.6	2.2	12.6
Steak, sirloin -----	128.5	-	2.4	-	11.1
Steak, porterhouse -----	131.1	-	2.8	-	12.9
Rump roast -----	128.1	-	3.0	-	10.4
Rib roast -----	135.2	134.3	2.6	1.5	13.7
Chuck roast -----	131.0	132.7	1.6	1.5	13.8
Hamburger -----	130.8	131.7	1.3	1.2	7.6
Beef liver -----	114.8	-	.2	-	2.7
Veal cutlets -----	150.1	151.5	1.4	1.1	12.5
Pork -----	109.2	110.4	1.9	.9	5.4
Chops -----	111.4	113.2	.2	- 1.7	10.2
Loin roast -----	111.1	-	1.3	-	8.4
Pork sausage -----	112.9	-	1.3	-	1.9
Ham, whole -----	110.0	106.4	3.9	2.1	.4
Picnics -----	113.3	-	1.8	-	5.4
Bacon -----	101.0	103.8	3.8	3.5	3.3
Other meats -----	116.8	117.0	.2	.3	2.4
Lamb chops -----	124.8	-	.3	-	6.1
Frankfurters -----	115.4	116.6	.2	1.0	1.0
Ham, canned -----	109.0	-	1.1	-	1.3
Bologna sausage -----	120.0	-	- .1	-	2.9
Salami sausage -----	116.9	-	- .4	-	1.6
Liverwurst -----	114.2	-	.1	-	.7
Poultry -----	108.4	-	.8	-	2.0
Frying chicken -----	107.5	110.3	1.2	.8	1.7
Chicken breasts -----	110.4	-	.5	-	4.3
Turkey -----	111.1	-	- .3	-	1.1
Fish -----	134.7	134.2	1.1	.8	7.4
Shrimp, frozen -----	123.1	-	2.2	-	8.3
Fish, fresh or frozen -----	144.7	144.4	1.4	1.5	8.3
Tuna fish, canned -----	128.6	-	- .1	-	2.4
Sardines, canned -----	142.2	-	.9	-	10.4
Dairy products -----	116.4	116.2	.3	.3	2.2
Milk, fresh, grocery -----	115.7	115.4	.4	.4	2.3
Milk, fresh, delivered -----	118.8	-	.3	-	1.9
Milk, fresh, skim -----	120.5	-	.3	-	2.2
Milk, evaporated -----	120.9	-	.2	-	4.7
Ice cream -----	106.7	-	- .5	-	.1
Cheese, American process -----	122.3	122.4	.2	.2	2.9
Butter -----	105.8	105.4	.4	.3	- .1

See footnotes at end of table.

TABLE 7. Consumer Price Index--United States city average for urban wage earners and clerical workers, food items January 1972 indexes and percent changes from selected dates--Continued

Indexes (1967=100)

Item or Group	Index		Percent change to January 1972 from--		
	January 1972		December 1971		January 1971
	Unadjusted	Seasonally adjusted	Unadjusted	Seasonally adjusted	Unadjusted
Fruits and vegetables -----	120.9	121.6	- 2.8	- 4.2	10.3
Fresh fruits and vegetables -----	122.1	123.5	- 4.8	- 7.4	13.7
Apples -----	106.8	118.0	4.6	.3	5.4
Bananas -----	92.6	94.3	.4	- 4.5	3.8
Oranges -----	123.7	130.6	- 3.7	.6	11.1
Orange juice, fresh -----	130.8	-	.2	-	10.1
Grapefruit -----	121.2	136.9	.5	1.5	17.6
Grapes 1/ -----	(1/)	(1/)	(1/)	(1/)	(1/)
Strawberries 1/ -----	(1/)	(1/)	(1/)	(1/)	(1/)
Watermelon 1/ -----	(1/)	(1/)	(1/)	(1/)	(1/)
Potatoes -----	112.7	120.1	.3	.4	1.9
Onions -----	105.7	114.5	.2	.7	10.9
Asparagus 1/ -----	(1/)	-	(1/)	-	(1/)
Cabbage -----	145.3	135.7	- 8.2	- 15.7	30.4
Carrots -----	145.7	141.3	8.6	10.0	33.7
Celery -----	174.6	169.5	8.2	2.5	59.7
Cucumbers -----	120.9	-	- 3.4	-	4.7
Lettuce -----	133.6	133.2	- 22.8	- 16.4	26.0
Peppers, green -----	114.0	-	- 23.1	-	13.5
Spinach -----	139.1	-	- .6	-	13.2
Tomatoes -----	143.8	130.6	- 15.0	- 6.4	21.8
Processed fruits and vegetables -----	119.2	-	.3	-	5.7
Fruit cocktail, canned -----	121.4	-	1.0	-	5.9
Pears, canned -----	116.9	-	.3	-	1.7
Grapefruit-pineapple juice, drink -----	114.7	-	.3	-	1.5
Orange juice concentrate, frozen -----	135.8	135.7	.1	0	16.1
Lemonade concentrate, frozen -----	117.4	-	.4	-	5.7
Beets, canned -----	118.3	-	1.1	-	5.0
Peas, green, canned -----	108.6	-	0	-	3.9
Tomatoes, canned -----	114.9	-	- .2	-	.2
Dried beans -----	133.9	-	.5	-	20.2
Broccoli, frozen -----	117.8	-	- .1	-	1.1
Other food at home -----	116.2	114.5	- .3	- .6	- .7
Eggs -----	108.0	99.2	- 2.3	- 2.9	- 12.9
Fats and oils: -----					
Margarine -----	117.3	-	- .3	-	3.3
Salad dressing, Italian -----	110.2	-	- .6	-	3.7
Salad or cooking oil -----	123.9	-	.3	-	7.8
Sugar and sweets -----	120.1	-	0	-	2.0
Sugar -----	113.6	-	.1	-	2.3
Grape jelly -----	121.5	-	- .1	-	4.9
Chocolate bar -----	130.8	-	- .4	-	.8
Syrup, chocolate flavored -----	113.3	-	.5	-	- .1
Nonalcoholic beverages -----	120.4	-	- .1	-	- 1.2
Coffee, can and bag -----	118.2	-	- .3	-	- 5.6
Coffee, instant -----	124.7	-	- .3	-	.1
Tea -----	106.1	-	.1	-	0
Cola drink -----	127.7	-	.5	-	4.0
Carbonated fruit drink -----	127.9	-	0	-	3.6
Prepared and partially prepared foods ---	113.5	-	.2	-	2.0
Bean soup, canned -----	114.5	-	- .2	-	1.0
Chicken soup, canned -----	106.4	-	.7	-	.2
Spaghetti, canned -----	118.1	-	.5	-	1.5
Mashed potatoes, instant -----	111.5	-	.5	-	1.6
Potatoes, french fried, frozen -----	108.5	-	- .7	-	- 1.5
Baby foods, canned -----	111.1	-	0	-	1.2
Sweet pickle relish -----	122.0	-	.7	-	7.2
Pretzels -----	114.1	-	- .3	-	3.8

1/ Priced only in season.

TABLE 8. Consumer Price Index--United States city average for urban wage earners and clerical workers, indexes for selected items and groups, January 1972 and percent changes from selected dates

(1967=100 unless otherwise specified)

Item and group	Other index bases	Indexes		Percent change to January 1972 from	
		January 1972	December 1971	December 1971	January 1971
Housing -----		127.3	126.8	.4	3.7
Shelter 1/ -----		132.3	131.6	.5	3.4
Rent -----		117.1	116.9	.2	3.7
Homeownership costs 2/ -----		137.8	137.0	.6	3.3
Mortgage interest rates -----		118.4	118.6	-.2	- 9.9
Property taxes -----		141.1	137.6	2.5	11.2
Property insurance rates -----		122.4	122.4	0	5.7
Maintenance and repairs -----		137.8	137.4	.3	7.0
Commodities 3/ -----		121.3	120.8	.4	4.5
Exterior house paint -----		117.7	116.8	.8	2.4
Interior house paint -----		115.8	115.4	.3	1.8
Services -----		144.9	144.6	.2	7.9
Repainting living and dining rooms -----		154.4	154.0	.3	9.3
Reshingling house roof -----		152.0	151.6	.3	11.9
Residing house -----		133.4	133.3	.1	5.0
Sink replacement -----		143.9	143.7	.1	6.0
Furnace repair -----		150.9	150.2	.5	9.3
Fuel and utilities -----		118.7	117.9	.7	5.9
Fuel oil and coal -----		118.7	118.1	.5	1.7
Fuel oil, #2 -----		116.5	116.4	.1	1.0
Gas and electricity -----		119.0	118.2	.7	6.7
Gas -----		121.7	120.5	1.0	8.0
Electricity -----		116.6	116.0	.5	5.6
Other utilities:					
Residential telephone services -----		111.8	110.7	1.0	6.6
Residential water and sewerage services -----		136.4	136.4	0	5.8
Household furnishings and operation 4/ -----		119.5	119.6	-.1	3.6
Housefurnishings -----		114.9	115.3	-.3	2.0
Textiles -----		110.8	113.1	- 2.0	1.0
Sheets, percale or muslin -----		110.1	116.5	- 5.5	- 1.3
Curtains, tailored, polyester -----		110.3	110.6	-.3	1.9
Bedsprings, chiefly cotton -----		105.1	108.8	- 3.4	- 2.1
Drapery fabric, cotton or rayon/acetate -----		118.9	119.1	-.2	1.5
Pillows, bed, polyester, acrylic, or kapok -----		107.0	110.1	- 2.8	3.0
Slipcover, throws, ready made chiefly cotton -----		113.1	113.2	-.1	3.0
Furniture and bedding -----		119.8	120.1	-.2	2.5
Bedroom furniture, chest and dresser -----	Mar. 70	104.6	104.7	-.1	3.3
Living Room furniture, Sofa -----	Dec. 71	99.8	100.0	-.2	(5/)
Cocktail Table -----	Dec. 71	100.1	100.0	.1	(5/)
Dining room chairs -----	Mar. 70	103.4	103.5	-.1	1.5
Recliner, Upholstered -----	Dec. 71	99.2	100.0	-.8	(5/)
Sofas, dual purpose -----		116.7	116.9	-.2	1.4
Bedding, mattress and box springs -----	June 70	103.7	104.4	-.7	2.3
Aluminum folding chair 6/ -----		(6/)	(6/)	(6/)	(6/)
Cribs -----		118.8	119.2	-.3	1.5
Floor coverings -----		106.3	106.6	-.3	.4
Broadloom, carpeting, manmade fibers -----		101.9	102.1	-.2	- .6
Vinyl sheet goods -----		115.6	116.5	-.8	3.5
Vinyl asbestos tile -----		117.6	117.4	.2	1.8
Appliances 7/ -----		105.8	105.8	0	.7
Washing machines, electric, automatic -----		110.2	110.0	.2	1.7
Vacuum cleaners, canister type -----		104.0	103.6	.4	.8
Refrigerators or refrigerator-freezers, electric -----		108.2	108.3	-.1	.7
Ranges, free standing, gas or electric -----		111.2	111.3	-.1	1.3
Clothes dryers, electric, automatic -----		113.3	113.0	.3	2.7
Air conditioners, demountable 6/ -----		(6/)	(6/)	(6/)	(6/)
Room heaters, electric, portable 6/ -----		108.9	108.5	.4	.4
Garbage disposal units -----		110.9	110.4	.5	.1
Other housefurnishings:					
Dinnerware, chinaware -----		120.1	119.4	.6	4.7
Flatware, stainless steel -----		122.0	121.8	.2	3.6
Table lamps, with shade -----		122.0	121.8	.2	2.9
Lawn mowers, power, rotary type 6/ -----		(6/)	(6/)	(6/)	(6/)
Electric drills, hand held -----		106.9	106.9	0	.2
Housekeeping supplies:					
Laundry soaps and detergents -----		111.0	110.8	.2	4.3
Paper napkins -----		128.6	128.6	0	5.7
Toilet tissue -----		124.5	123.8	.6	1.6
Housekeeping services:					
Domestic service, general housework -----		136.4	136.1	.2	3.8
Baby sitter service -----		133.4	132.8	.5	5.6
Postal charges -----		146.6	146.6	0	21.2
Laundry, flatwork, finished service -----		136.4	136.3	.1	5.2
Licensed day care service, preschool child -----		119.4	119.4	0	2.1
Washing machine repairs -----		138.1	138.2	.1	6.6

TABLE 8. Consumer Price Index--United States city average for urban wage earners and clerical workers, indexes for selected items and groups, January 1972 and percent changes from selected dates--Continued

(1967=100 unless otherwise specified)

Item and group	Other index bases	Indexes		Percent change to January 1972 from:	
		January 1972	December 1971	December 1971	January 1971
Apparel and upkeep 8/ -----		120.2	121.8	- 1.3	2.2
Apparel commodities -----		120.3	122.2	- 1.6	2.1
Apparel commodities less footwear -----		119.9	122.1	- 1.8	2.1
Men's and boys' -----		119.9	121.6	- 1.4	1.6
Men's:					
Topcoats, wool or all-weather coats, polyester blends 6/ -----		121.2	124.2	- 2.4	- .9
Suits, year round weight -----		126.5	131.5	- 3.8	1.2
Suits, tropical weight 6/ -----	(6/)	(6/)	(6/)	(6/)	(6/)
Jackets, lightweight -----		113.0	114.3	- 1.1	2.8
Slacks, wool or wool blends -----		115.7	116.8	- .9	.3
Slacks, cotton or manmade blends -----		134.0	134.7	- .5	3.8
Trousers, work, cotton or polyester/cotton -----		114.1	114.0	.1	3.1
Shirts, work, cotton or polyester/cotton -----		114.5	114.5	0	3.6
Shirts, business, polyester/cotton -----		112.6	114.4	- 1.6	3.0
T-shirts, chiefly cotton -----		118.3	118.2	.1	- 1.3
Socks, cotton or manmade fibers -----		114.3	115.8	- 1.3	- .4
Handkerchiefs, cotton or polyester/cotton -----		116.3	116.1	.2	2.4
Boy's:					
Coats, all purpose, cotton or cotton blend 6/ -----		115.8	118.3	- 2.1	- 3.1
Sport coats, wool or wool blend 6/ -----		118.1	121.3	- 2.6	- .6
Dungarees, cotton or cotton blend -----		126.4	125.8	.5	5.4
Undershorts, cotton -----		119.9	119.6	.3	1.0
Women's and girls' -----		120.2	123.2	- 2.4	2.4
Women's:					
Coats, heavyweight, wool or wool blend 6/ -----		116.2	126.0	- 7.8	3.8
Carcoats, heavyweight, cotton 6/ -----		116.3	128.5	- 9.5	- 2.1
Sweaters, wool or acrylic 6/ -----		121.8	123.5	- 1.4	9.8
Skirts, wool, wool blend or manmade fibers 6/ -----		135.0	142.1	- 5.0	8.3
Skirts, cotton or polyester/cotton 6/ -----	(6/)	(6/)	(6/)	(6/)	(6/)
Blouses, cotton or manmade fibers -----		117.6	121.6	- 3.3	- 2.0
Dresses, street, chiefly manmade fiber -----		129.6	130.1	- .4	1.4
Dresses, street, wool or wool blend -----		138.4	142.7	- 3.0	5.8
Slips, nylon -----		111.2	111.2	0	.6
Panties, acetate or nylon tricot -----		116.7	116.2	.4	3.3
Girdles, manmade blend -----		116.1	118.1	- 1.7	1.5
Brassiers, nylon lace -----		122.3	123.4	- .9	3.9
Hose, or panty hose, nylon seamless -----		97.4	98.3	- .9	- 2.7
Anklets, or knee-length socks, various fibers -----		115.9	116.4	- .4	- .4
Gloves, fabric, nylon or cotton -----		110.2	109.8	.4	1.3
Handbags, rayon faille or plastic -----		138.9	138.2	.5	9.3
Girls':					
Raincoats, vinyl, cotton, or polyester blends -----		117.1	119.3	- 1.8	1.1
Skirts, wool, wool blends, or acrylic 6/ -----		100.2	108.6	- 7.7	- 3.6
Dresses, cotton, manmade fibers or blends -----		108.9	109.3	- .4	7.5
Slacks, cotton or chiefly cotton 6/ -----		131.1	131.7	- .5	.5
Slips, polyester blends -----		111.7	111.9	- .2	2.9
Handbags, plastic -----		124.1	129.3	- 4.0	- 2.6
Footwear -----		122.7	123.1	- .3	2.4
Men's:					
Shoes, street -----		119.7	121.0	- 1.1	1.6
Shoes, work, high -----		121.1	120.6	.4	3.9
Women's:					
Shoes, street, pump -----		124.3	125.1	- .6	2.0
Shoes, evening, pump -----		120.7	121.1	- .3	.5
Shoes, casual -----		125.1	125.8	- .6	2.3
Houseslipppers, scuff -----		124.0	123.4	.5	2.8
Children's:					
Shoes, oxford -----		122.4	124.1	- 1.4	2.6
Sneakers, boys', oxford type -----		121.0	120.3	.6	3.7
Dress shoes, girls', strap or pump -----		128.6	128.4	.2	5.1
Miscellaneous apparel:					
Diapers, cotton gauze or disposable -----		113.0	113.3	- .3	2.4
Yard goods, polyester blend -----		120.6	121.9	- 1.1	- .7
Wrist watches, men's and women's -----		114.0	113.8	.2	1.9
Apparel services:					
Drycleaning, men's suits and women's dresses -----		117.2	117.1	.1	1.8
Automatic laundry service -----		113.7	113.9	- .2	- 1.0
Laundry, men's shirts -----		120.5	120.4	.1	1.9
Tailoring charge, hem adjustment -----		131.7	131.6	.1	4.5
Shoe repair, women's heel lift -----		113.8	113.8	0	4.1

TABLE 8. Consumer Price Index--United States city average for urban wage earners and clerical workers, indexes for selected items and groups, January 1972 and percent changes from selected dates--Continued

(1967=100 unless otherwise specified)

Item and group	Other index bases	Indexes		Percent change to January 1972 from:	
		January 1972	December 1971	December 1971	January 1971
Transportation -----		119.0	118.6	.3	1.3
Private 9/ -----		116.4	116.3	.1	.5
Automobiles, new -----		112.2	110.4	1.6	- 2.8
Automobiles, used -----		105.3	107.2	- 1.8	- 1.6
Gasoline, regular and premium -----		106.7	107.3	-.6	-.9
Motor oil, premium -----		122.3	121.9	.3	4.3
Tires, new, tubeless -----		117.9	118.3	-.3	2.2
Auto repairs and maintenance 10/ -----		133.1	131.9	.9	7.0
Auto insurance rates -----		141.0	141.8	-.6	3.8
Auto registration -----		127.1	123.7	2.7	4.4
Parking fees, private and municipal -----		138.1	137.4	.5	5.5
Public -----		143.4	139.7	2.6	7.1
Local transit fares -----		150.2	144.4	4.0	6.9
Taxicab fares -----		132.8	132.8	0	11.6
Railroad fares, coach -----		128.2	128.2	0	2.8
Airplane fares, chiefly coach -----		129.6	129.6	0	6.3
Bus fares, intercity -----		136.1	136.1	0	5.6
Health and recreation -----		124.3	123.9	.3	3.8
Medical care -----		130.5	130.1	.3	4.5
Drugs and prescriptions -----		105.5	105.6	-.1	1.0
Over-the-counter items -----		110.3	110.2	.1	1.0
Multiple vitamin concentrates -----		95.1	95.1	0	- 2.9
Aspirin compounds -----		114.1	114.0	.1	1.6
Liquid tonics -----		100.8	100.8	0	- 1.0
Adhesive bandages, package -----		123.8	124.1	-.2	4.7
Cold tablets or capsules -----		112.8	112.9	-.1	3.8
Cough syrup -----		111.7	111.3	.4	- 1.8
Prescriptions -----		101.5	101.7	-.2	1.0
Anti-infectives -----		78.9	79.1	-.3	- 3.4
Sedatives and hypnotics -----		124.7	124.8	-.1	3.6
Ataractics -----		102.6	102.6	0	1.6
Anti-spasmodics -----		107.9	108.0	-.1	2.8
Cough preparations -----		127.1	127.2	-.1	3.0
Cardiovasculars and anti-hypertensives -----		112.0	112.1	-.1	2.7
Analgesics, internal -----		108.2	108.3	-.1	1.5
Anti-obesity -----		117.7	117.3	.3	5.7
Hormones -----		94.0	94.8	-.8	- 1.4
Professional services:					
Physicians' fees -----		132.3	132.2	.1	5.1
General physician, office visits -----		133.3	133.3	0	4.5
General physician, house visits -----		134.8	134.6	.1	6.7
Obstetrical cases -----		132.0	131.6	.3	5.4
Pediatric care, office visits -----		135.3	135.3	0	6.6
Psychiatrist, office visits -----		127.9	127.3	.5	4.7
Herniorrhaphy, adult -----		126.8	126.4	.3	5.1
Tonsillectomy and adenoidectomy -----		128.7	128.7	0	6.2
Dentists' fees -----		130.5	130.0	.4	5.5
Fillings, adult, amalgam, one surface -----		131.8	131.3	.4	5.7
Extractions, adult -----		130.4	129.6	.6	5.3
Dentures, full upper -----		128.2	127.7	.4	5.5
Other professional services:					
Examination, prescription, and dispensing of eyeglasses -----		123.1	122.9	.2	5.5
Routine laboratory tests -----		118.7	118.6	.1	4.4
Hospital service charges:					
Daily service charges -----		167.1	165.5	1.0	8.8
Semiprivate rooms -----		169.6	167.9	1.0	9.1
Private rooms -----		163.5	162.0	.9	8.4
Operating room charges -----		163.5	162.6	.6	9.1
X-ray, diagnostic series, upper G.I. -----		127.7	126.9	.6	5.9
Personal care -----		118.1	117.9	.2	2.4
Toilet goods -----		115.1	114.8	.3	2.6
Toothpaste, standard, dentifrice -----		109.9	109.3	.5	3.6
Toilet soap, hard milled -----		119.7	119.7	0	8.6
Hand lotions, liquid -----		121.2	120.4	.7	1.6
Shaving cream, aerosol -----		107.1	107.3	-.2	2.8
Face powder, pressed -----		122.0	122.0	0	-.4
Deodorants, aerosol -----		104.9	105.9	-.9	.2
Cleansing tissues -----		124.4	121.8	2.1	2.1
Home permanent wave kits -----		111.3	111.6	-.3	1.6
Personal care services -----		121.3	121.2	.1	2.3
Men's haircuts -----		123.9	123.9	0	1.9
Beauty shop services -----		119.4	119.2	.2	2.6
Women's haircuts -----		120.2	119.9	.3	1.9
Shampoo and wave sets, plain -----		122.7	122.6	.1	2.9
Permanent waves, cold -----		111.5	111.3	.2	2.7

TABLE 8. Consumer Price Index--United States city average for urban wage earners and clerical workers, indexes for selected items and groups, January 1972 and percent changes from selected dates--Continued

(1967=100 unless otherwise Specified)

Item and group	Other index bases	Indexes		Percent change to January 1972 from:	
		January 1972	December 1971	December 1971	January 1971
Reading and recreation ^{11/} -----		121.4	121.1	.2	3.5
Recreational goods -----		107.4	107.3	.1	1.6
TV sets, portable and console -----		99.9	100.3	-.4	-.4
TV replacement tubes -----		126.4	124.7	1.4	4.2
Radios, portable and table model -----		98.4	98.4	0	-.7
Tape recorders, portable -----		93.4	93.1	.3	- 2.4
Phonograph records, stereophonic -----		107.2	107.1	.1	7.7
Movie cameras, Super 8, zoom lens -----		88.3	88.9	-.7	- 2.3
Film, 35mm, color -----		108.6	108.7	-.1	.8
Golf balls, liquid center or solid core -----		105.1	105.2	-.1	1.2
Basketballs, rubber or vinyl cover -----		125.8	125.7	.1	4.0
Fishing rods, fresh water spincasting -----		110.8	110.7	.1	1.1
Bowling balls -----		113.4	113.0	.4	2.7
Bicycles, boys' -----		113.8	113.3	.4	3.6
Tricycles -----		112.6	112.2	.4	2.9
Dog food, canned or boxed -----		109.7	110.2	-.5	3.0
Recreational services -----		126.9	126.4	.4	3.1
Indoor movie admissions -----		139.0	137.9	.8	2.9
Adult -----		137.8	137.4	.3	1.9
Children's -----		142.2	139.1	2.2	5.6
Drive-in movie admissions, adult -----		143.1	142.5	.4	4.4
Bowling fees, evening -----		117.9	117.6	.3	2.3
Golf green fees ^{6/} -----		(6/)	(6/)	(6/)	(6/)
TV repair, picture tube replacement -----		98.6	98.6	0	1.8
Film developing, color -----		118.2	118.2	0	3.2
Reading and education:					
Newspapers, street sale and delivery -----		130.7	130.7	0	3.1
Magazines, single copy and subscription -----		124.9	124.9	0	1.7
Piano lessons, beginner -----		121.6	121.5	.1	.9
Other goods and services -----		123.5	123.0	.4	3.9
Tobacco products -----		130.2	129.2	.8	5.0
Cigarettes, nonfilter tip, regular size -----		131.6	130.6	.8	4.9
Cigarettes, filter tip, king size -----		132.2	131.1	.8	5.4
Cigars, domestic, regular size -----		109.7	109.5	.2	3.7
Alcoholic beverages -----		118.5	118.4	.1	2.9
Beer -----		113.5	113.8	-.3	2.0
Whiskey, spirit blended and straight bourbon -----		107.4	107.0	.4	1.5
Wine, dessert and table -----		125.3	125.1	.2	5.7
Away from home -----		129.3	128.8	.4	3.7
Financial and miscellaneous personal expenses:					
Funeral service, adult -----		119.5	119.2	.3	4.4
Bank service charges, checking accounts -----		109.7	109.5	.2	- 1.2
Legal services, short form will -----		141.7	141.4	.2	6.7
Other special groups:					
All items less shelter -----		120.9	120.9	0	3.3
Commodities less food -----		117.7	118.1	-.3	2.2
Nondurables less food and apparel -----		116.8	116.8	0	2.6
Household services less rent -----		137.0	136.1	.7	4.1
Transportation services -----		135.6	134.2	1.0	4.7
Other services -----		124.3	124.1	.2	3.0

^{1/} Also includes hotel and motel rates not shown separately.

^{2/} Also includes home purchase costs not shown separately.

^{3/} Also includes pine shelving, furnace air filters, packaged dry cement mix, and shrubbery not shown separately.

^{4/} Also includes venetian blinds, nails, carpet sweepers, air deodorizers, steel wool scouring pads, envelopes, reupholstering, and moving expenses.

^{5/} Not available.

^{6/} Prices only in season.

^{7/} Also includes radios and television sets, shown separately under reading and recreation.

^{8/} Also includes men's sport shirts, women's and girls' lightweight coats, women's slacks, cocktail dresses, bathing suits, girls' shorts, earrings, and zippers not shown separately.

^{9/} Also includes recapped tires and drivers' license fees not shown separately.

^{10/} Includes prices for water pump replacement, motor tune-up, automatic transmission repair, exhaust system repair, front end alignment, and chassis lubrication.

^{11/} Also includes outboard motors, nondurable toys, college tuition fees, paperback books, and collage textbooks, not shown separately.

Reliability of Percent Changes in the CPI

A system of "replicated" samples introduced into the index structure in the 1964 revision permits an estimate of sampling error for the CPI. ^{1/} The table below shows standard errors for monthly, quarterly, and annual percent changes in the CPI for all items and for nine commodity groupings based on 1971 averages. The figures may be interpreted as follows: the chances are about 95 out of 100 that the percent change in the CPI as computed differs from the corresponding "complete coverage" change by less than twice the standard error.

Because the CPI is rounded to one decimal place, some ambiguity may arise in interpreting small index changes. The table below indicates, for example, that a month-to-month change of 0.1 percent in the all-items CPI is significant. Because of rounding, however, a change of this size in the published index might result from a much smaller change in the unrounded value. Hence, any particular change of 0.1 percent may or may not be significant. On the other hand, a published change of 0.2 percent is almost always significant, regardless of the time period to which it relates.

Average Standard Errors of Percent Changes in the
CPI Based on 1971 Data

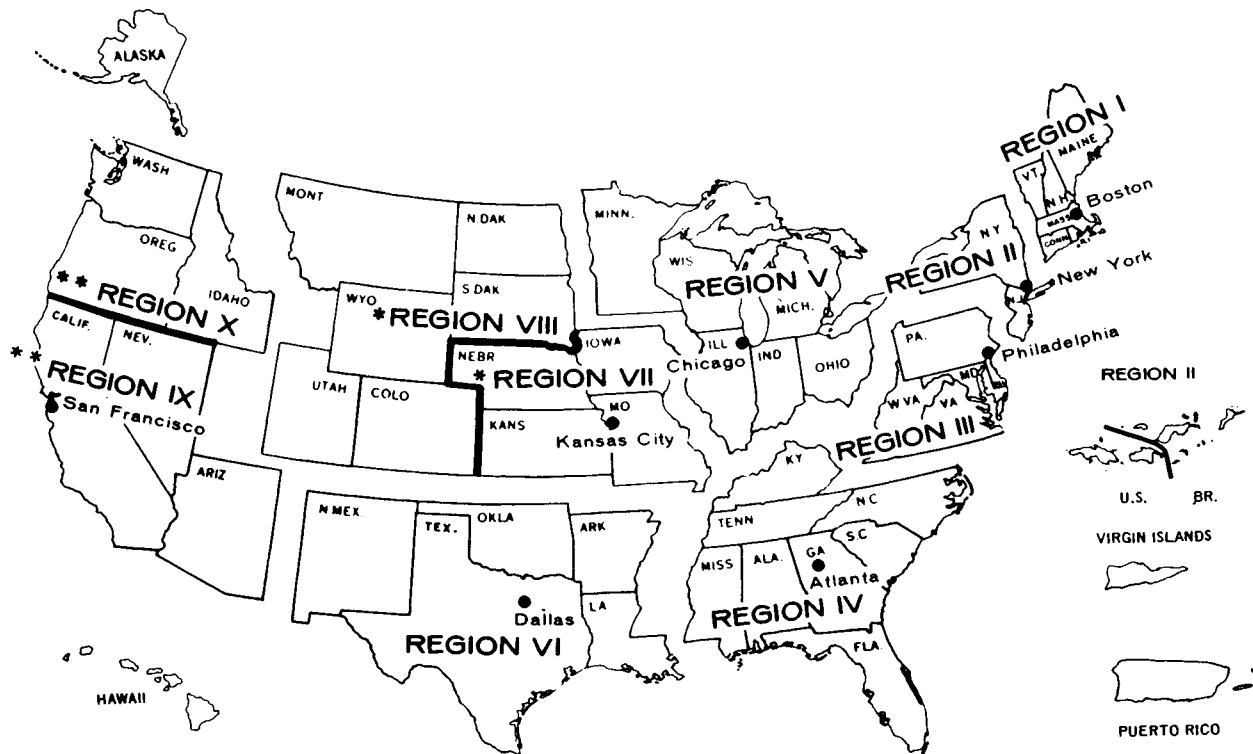
Component	Standard Error		
	Monthly Change	Quarterly Change	Annual Change
All Items -----	.04	.06	.09
Food at home -----	.07	.10	.15
Food away from home -----	.08	.14	.33
Housing -----	.06	.10	.19
Apparel and upkeep -----	.17	.27	.33
Transportation -----	.11	.17	.20
Medical care -----	.09	.14	.28
Personal care -----	.14	.19	.34
Reading and recreation -----	.09	.12	.20
Other goods and services ----	.11	.17	.23

This replaces the table of average errors based on 1970 data which was included in the CPI report through December 1971.

^{1/} The method of deriving these estimates is described in a paper by Marvin Wilkerson, "Measurement of Sampling Error in the Consumer Price Index," Journal of the American Statistical Association, September 1967.

BUREAU OF LABOR STATISTICS

REGIONAL OFFICES



Region I

1603 JFK Federal Building
Government Center
Boston, Mass. 02203
Phone: 223-6762 (Area Code 617)

Region V

8th Floor, 300 South Wacker Drive
Chicago, Ill. 60606
Phone: 353-1880 (Area Code 312)

Region II

1515 Broadway
New York, N.Y. 10036
Phone: 971-5405 (Area Code 212)

Region VI

1100 Commerce St., Rm. 6B7
Dallas, Tex. 75202
Phone: 749-3516 (Area Code 214)

Region III

406 Penn Square Building
1317 Filbert St.
Philadelphia, Pa. 19107
Phone: 597-7796 (Area Code 215)

Regions VII and VIII

Federal Office Building
911 Walnut St., 10th Floor
Kansas City, Mo. 64106
Phone: 374-2481 (Area Code 816)

Region IV

Suite 540
1371 Peachtree St. NE.
Atlanta, Ga. 30309
Phone: 526-5418 (Area Code 404)

Regions IX and X

450 Golden Gate Ave.
Box 36017
San Francisco, Calif. 94102
Phone: 556-4678 (Area Code 415)

- * Regions VII and VIII will be serviced by Kansas City.
- ** Regions IX and X will be serviced by San Francisco.