

**Transmission of material in this release is embargoed until  
8:30 a.m. (EDT) Wednesday, June 15, 2011**

USDL-11-0890

Technical information: (202) 691-7000 • Reed.Steve@bls.gov • www.bls.gov/cpi  
Media Contact: (202) 691-5902 • PressOffice@bls.gov

(NOTE: This release was reissued on Thursday, August 18, 2011, to correct errors in the April-May 2011 data. Corrections have been made to Table 7 for the following indexes: all items, energy, housing, fuels and utilities, and services. There were no changes made to the text of the release.)

### CONSUMER PRICE INDEX – MAY 2011

The Consumer Price Index for All Urban Consumers (CPI-U) increased 0.2 percent in May on a seasonally adjusted basis, the U.S. Bureau of Labor Statistics reported today. Over the last 12 months, the all items index increased 3.6 percent before seasonal adjustment.

The index for all items less food and energy increased 0.3 percent in May, its largest increase since July 2008. The indexes for apparel, shelter, new vehicles, and recreation all contributed to the acceleration, rising more in May than in April. These increases more than offset declines in the indexes for airline fare, tobacco, and personal care.

The food index rose in May as well. The food at home index repeated its April increase of 0.5 percent as four of the six major grocery store food group indexes increased, with the index for meats, poultry, fish, and eggs rising the most. In contrast, the energy index, which had been rising sharply, declined in May. The gasoline index decreased for the first time since last June, although the index for household energy increased.

The upward trend among the 12 month increases of major indexes continued in May. The 12 month change in the all items index, which was 1.1 percent as recently as November, reached 3.6 percent in May. The energy index has increased 21.5 percent over the last 12 months, the food index has risen 3.5 percent and the index for all items less food and energy has increased 1.5 percent. All of these figures have been rising in recent months.

**Chart 1. One-month percent change in CPI for All Urban Consumers (CPI-U), seasonally adjusted, May 2010 - May 2011**  
Percent change

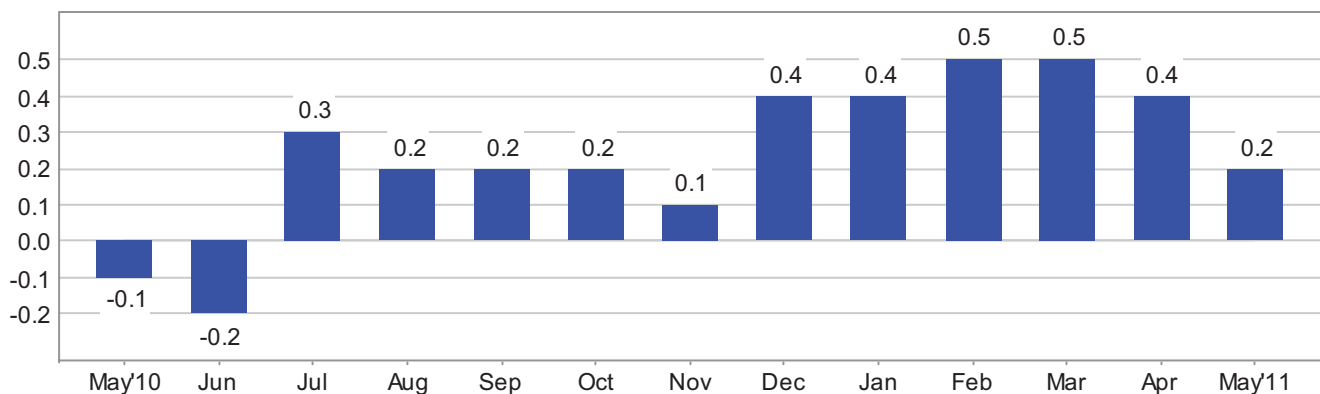


Chart 2. 12-month percent change in CPI for All Urban Consumers (CPI-U), not seasonally adjusted, May 2010 - May 2011

Percent change

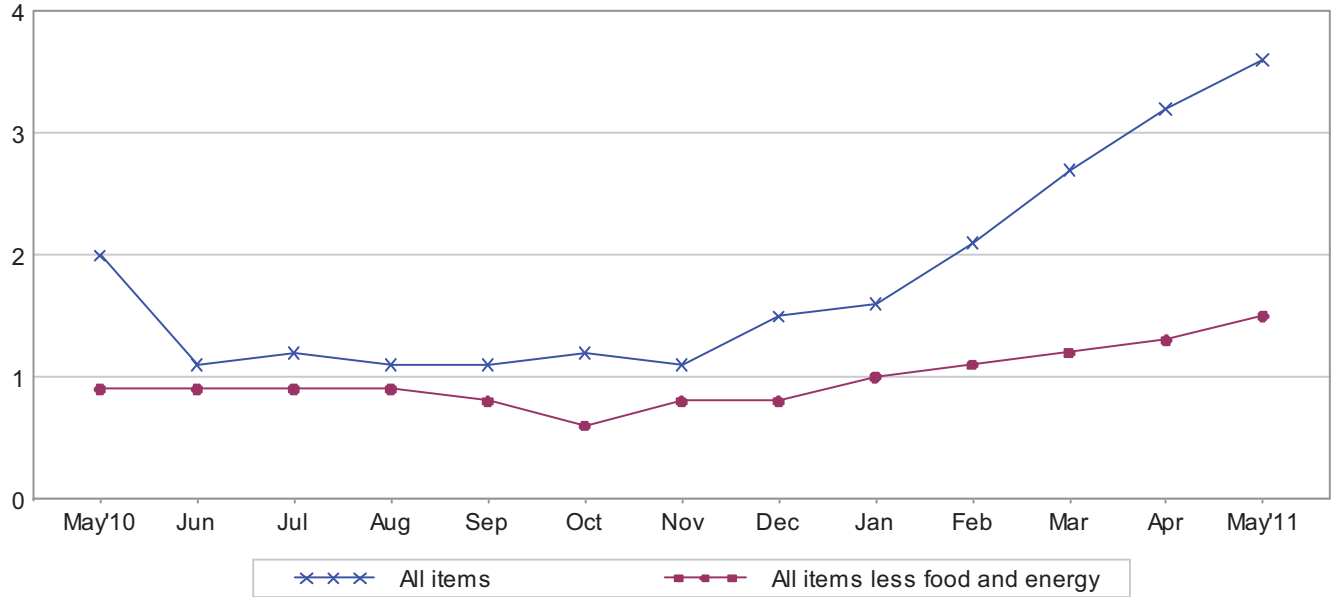


Table A. Percent changes in CPI for All Urban Consumers (CPI-U): U.S. city average

	Seasonally adjusted changes from preceding month							Un-adjusted 12-mos. ended May 2011
	Nov. 2010	Dec. 2010	Jan. 2011	Feb. 2011	Mar. 2011	Apr. 2011	May 2011	
All items .....	.1	.4	.4	.5	.5	.4	.2	3.6
Food .....	.2	.1	.5	.6	.8	.4	.4	3.5
Food at home .....	.2	.2	.7	.8	1.1	.5	.5	4.4
Food away from home <sup>1</sup> .....	.1	.1	.2	.2	.3	.3	.2	2.2
Energy .....	.1	4.0	2.1	3.4	3.5	2.2	-1.0	21.5
Energy commodities .....	.7	6.4	4.0	4.8	5.5	3.1	-1.9	36.2
Gasoline (all types) .....	.7	6.7	3.5	4.7	5.6	3.3	-2.0	36.9
Fuel oil <sup>1</sup> .....	4.2	4.9	6.8	5.8	6.2	3.2	-8	36.0
Energy services .....	-.8	.6	-.6	1.1	.2	.6	.6	1.1
Electricity .....	.6	.3	-.5	.4	.7	.2	.8	1.8
Utility (piped) gas service .....	-5.3	1.7	-1.2	3.4	-1.4	1.9	-.3	-1.2
All items less food and energy .....	.1	.1	.2	.2	.1	.2	.3	1.5
Commodities less food and energy								
commodities .....	.0	-.1	.2	.2	.1	.4	.5	1.2
New vehicles .....	-.2	-.1	-.1	1.0	.7	.7	1.1	3.4
Used cars and trucks .....	.1	-.1	-.3	.1	.8	1.2	1.1	4.1
Apparel .....	.1	.1	1.0	-.9	-.5	.2	1.2	1.0
Medical care commodities <sup>1</sup> .....	.2	.1	.5	.7	.5	.5	.0	3.0
Services less energy services .....	.2	.1	.1	.2	.2	.1	.2	1.6
Shelter .....	.1	.1	.1	.1	.1	.1	.2	1.1
Transportation services .....	.4	.2	.6	.5	.5	.2	.1	3.3
Medical care services .....	.2	.3	-.1	.4	.1	.3	.3	3.0

<sup>1</sup> Not seasonally adjusted.

## **Consumer Price Index Data for May 2011**

### **Food**

The food index rose 0.4 percent in May, the same increase as in April. The food at home index increased 0.5 percent and has risen 3.7 percent since December. Among major grocery store food groups, the index for meats, poultry, fish, and eggs rose 1.5 percent and the cereals and bakery products index increased 1.0 percent. The dairy and related products index and the index for other food at home posted smaller increases, while the index for nonalcoholic beverages was unchanged. The only group to decline was the fruits and vegetables index, which declined 1.3 percent as a sharp decline in the index for tomatoes caused the fresh vegetables index to fall for the second straight month after sharp increases early in the year. The food at home index has risen 4.4 percent over the last 12 months with all major grocery store food groups posting increases. The index for food away from home rose 0.2 percent in May after rising 0.3 percent in each of the previous two months.

### **Energy**

The energy index declined 1.0 percent in May ending a series of ten consecutive advances. After a series of several sharp increases, the gasoline index declined 2.0 percent in May. (Before seasonal adjustment, gasoline prices rose 3.6 percent in May.) Despite the May decline, the gasoline index has increased 23.7 percent over the past six months. The index for household energy increased in May, rising 0.5 percent after a 0.7 percent increase in April. The index for electricity rose 0.8 percent, more than offsetting a 0.8 percent decline in the fuel oil index and a 0.3 percent decrease in the index for natural gas. The household energy index has risen 2.9 percent over the last 12 months, with the fuel oil index up 36.0 percent and the electricity index up 1.8 percent but the index for natural gas down 1.2 percent.

### **All items less food and energy**

The index for all items less food and energy rose 0.3 percent in May after increasing 0.1 percent in March and 0.2 percent in April. The shelter index rose 0.2 percent in May after increasing 0.1 percent in each of the seven previous months. Both rent and owners' equivalent rent rose 0.1 percent; the acceleration in shelter was due to the index for lodging away from home, which rose 2.9 percent in May after being unchanged in April. The apparel index increased in May, rising 1.2 percent after a 0.2 percent increase in April. The index for new vehicles rose 1.1 percent in May after increasing 0.7 percent in April; the index for used cars and trucks also rose 1.1 percent. The index for recreation, which was unchanged in April, rose 0.3 percent in May. The medical care index rose 0.2 percent, with the index for medical care commodities unchanged and the index for medical care services up 0.3 percent. The index for household furnishings and operations advanced 0.2 percent, the same increase as in April. In contrast to these increases, the index for airline fares fell 1.3 percent in May, and the indexes for tobacco and for personal care both declined 0.2 percent.

The index for all items less food and energy increased 1.5 percent over the last 12 months, with virtually all of its major component indexes rising at a faster rate over the past six months than they did from May to November of 2010.

## **Not seasonally adjusted CPI measures**

The Consumer Price Index for All Urban Consumers (CPI-U) increased 3.6 percent over the last 12 months to an index level of 225.964 (1982-84=100). For the month, the index increased 0.5 percent prior to seasonal adjustment.

The Consumer Price Index for Urban Wage Earners and Clerical Workers (CPI-W) increased 4.1 percent over the last 12 months to an index level of 222.954 (1982-84=100). For the month, the index rose 0.5 percent prior to seasonal adjustment.

The Chained Consumer Price Index for All Urban Consumers (C-CPI-U) increased 3.3 percent over the last 12 months. For the month, the index increased 0.4 percent on a not seasonally adjusted basis. Please note that the indexes for the post-2009 period are subject to revision.

---

**The Consumer Price Index for June 2011 is scheduled to be released on Friday, July 15, 2011, at 8:30 a.m. (EDT).**

## **Facilities for Sensory Impaired**

Information from this release will be made available to sensory impaired individuals upon request. Voice phone: 202-691-5200, Federal Relay Services: 1-800-877-8339.

## **Brief Explanation of the CPI**

The Consumer Price Index (CPI) is a measure of the average change in prices over time of goods and services purchased by households. The Bureau of Labor Statistics publishes CPIs for two population groups: (1) the CPI for Urban Wage Earners and Clerical Workers (CPI-W), which covers households of wage earners and clerical workers that comprise approximately 32 percent of the total population and (2) the CPI for All Urban Consumers (CPI-U) and the Chained CPI for All Urban Consumers (C-CPI-U), which cover approximately 87 percent of the total population and include in addition to wage earners and clerical worker households, groups such as professional, managerial, and technical workers, the self-employed, short-term workers, the unemployed, and retirees and others not in the labor force.

The CPIs are based on prices of food, clothing, shelter, and fuels, transportation fares, charges for doctors' and dentists' services, drugs, and other goods and services that people buy for day-to-day living. Prices are collected each month in 87 urban areas across the country from about 4,000 housing units and approximately 26,000 retail establishments-department stores, supermarkets, hospitals, filling stations, and other types of stores and service establishments. All taxes directly associated with the purchase and use of items are included in the index. Prices of fuels and a few other items are obtained every month in all 87 locations. Prices of most other commodities and services are collected every month in the three largest geographic areas and every other month in other areas. Prices of most goods and services are obtained by personal visits or telephone calls of the Bureau's trained representatives.

In calculating the index, price changes for the various items in each location are averaged together with weights, which represent their importance in the spending of the appropriate population group. Local data are then combined to obtain a U.S. city average. For the CPI-U and CPI-W separate indexes are also published by size of city, by region of the country, for cross-classifications of regions and population-size classes, and for 27 local areas. Area indexes do not measure differences in the level of prices among cities; they only measure the average change in prices for each area since the base period. For the C-CPI-U data are issued only at the national level. It is important to note that the CPI-U and CPI-W are considered final when released, but the C-CPI-U is issued in preliminary form and subject to two annual revisions.

The index measures price change from a designed reference date. For the CPI-U and the CPI-W the reference base is 1982-84 equals 100. The reference base for the C-CPI-U is December 1999 equals 100. An increase of 16.5 percent from the reference base, for example, is shown as 116.500. This change can also be expressed in dollars as follows: the price of a base period market basket of goods and services in the CPI has risen from \$10 in 1982-84 to \$11.65.

For further details visit the CPI home page on the Internet at <http://www.bls.gov/cpi/> or contact our CPI Information and Analysis Section on (202) 691-7000.

## Note on Sampling Error in the Consumer Price Index

The CPI is a statistical estimate that is subject to sampling error because it is based upon a sample of retail prices and not the complete universe of all prices. BLS calculates and publishes estimates of the 1-month, 2-month, 6-month and 12-month percent change standard errors annually, for the CPI-U. These standard error estimates can be used to construct confidence intervals for hypothesis testing. For example, the estimated standard error of the 1 month percent change is 0.03 percent for the U.S. All Items Consumer Price Index. This means that if we repeatedly sample from the universe of all retail prices using the same methodology, and estimate a percentage change for each sample, then 95% of these estimates would be within 0.06 percent of the 1 month percentage change based on all retail prices. For example, for a 1-month change of 0.2 percent in the All Items CPI for All Urban Consumers, we are 95 percent confident that the actual percent change based on all retail prices would fall between 0.14 and 0.26 percent. For the latest data, including information on how to use the estimates of standard error, see “Variance Estimates for Price Changes in the Consumer Price Index, January-December 2010”. These data are available on the CPI home page (<http://www.bls.gov/cpi>), or by using the following link <http://www.bls.gov/cpi/cpivar2010.pdf>

## Calculating Index Changes

Movements of the indexes from one month to another are usually expressed as percent changes rather than changes in index points, because index point changes are affected by the level of the index in relation to its base period while percent changes are not. The example below illustrates the computation of index point and percent changes.

Percent changes for 3-month and 6-month periods are expressed as annual rates and are computed according to the standard formula for compound growth rates. These data indicate what the percent change would be if the current rate were maintained for a 12-month period.

### Index Point Change

CPI	202.416
Less previous index	201.800
Equals index point change	.616

### Percent Change

Index point difference	.616
Divided by the previous index	201.800
Equals	0.003
Results multiplied by one hundred	0.003x100
Equals percent change	0.3

## Regions Defined

The states in the four regions shown in Tables 3 and 6 are listed below.

The Northeast--Connecticut, Maine, Massachusetts, New Hampshire, New York, New Jersey, Pennsylvania, Rhode Island, and Vermont.

The Midwest--Illinois, Indiana, Iowa, Kansas, Michigan, Minnesota, Missouri, Nebraska, North Dakota, Ohio, South Dakota, and Wisconsin.

The South--Alabama, Arkansas, Delaware, Florida, Georgia, Kentucky, Louisiana, Maryland, Mississippi, North Carolina, Oklahoma, South Carolina, Tennessee, Texas, Virginia, West Virginia, and the District of Columbia.

The West--Alaska, Arizona, California, Colorado, Hawaii, Idaho, Montana, Nevada, New Mexico, Oregon, Utah, Washington, and Wyoming.

## A Note on Seasonally Adjusted and Unadjusted Data

Because price data are used for different purposes by different groups, the Bureau of Labor Statistics publishes seasonally adjusted as well as unadjusted changes each month.

For analyzing general price trends in the economy, seasonally adjusted changes are usually preferred since they eliminate the effect of changes that normally occur at the same time and in about the same magnitude every year--such as price movements resulting from changing climatic conditions, production cycles, model changeovers, holidays, and sales.

The unadjusted data are of primary interest to consumers concerned about the prices they actually pay. Unadjusted data also are used extensively for escalation purposes. Many collective bargaining contract agreements and pension plans, for example, tie compensation changes to the Consumer Price Index before adjustment for seasonal variation.

Seasonal factors used in computing the seasonally adjusted indexes are derived by the X-12-ARIMA Seasonal Adjustment Method. Seasonally adjusted indexes and seasonal factors are computed annually. Each year, the last 5 years of seasonally adjusted data are revised. Data from January 2006 through December 2010 were replaced in January 2011. Exceptions to the usual revision schedule were: the updated seasonal data at the end of 1977 replaced data from 1967 through 1977; and, in January 2002, dependently seasonally adjusted series were revised for January 1987-December 2001 as a result of a change in the aggregation weights for dependently adjusted series. For further information, please see "Aggregation of Dependently Adjusted Seasonally Adjusted Series," in the October 2001 issue of the CPI Detailed Report.

Effective with the publication of data from January 2006 through December 2010 in January 2011, the Video and audio series and the Information technology, hardware and services series were changed from independently adjusted to dependently adjusted. This resulted in an increase in the number of seasonal components used in deriving seasonal movement of the All items and 54 other lower level aggregations, from 73 for the publication of January 1998 through December 2005 data to 82 for the publication of seasonally adjusted data for January 2006 and later. Each year the seasonal status of every series is reevaluated based upon certain statistical criteria. If any of the 82 components change their seasonal adjustment status from seasonally adjusted to not seasonally adjusted, not seasonally adjusted data will be used in the aggregation of the dependent series for the last 5 years, but the seasonally adjusted



indexes before that period will not be changed. Note: 37 of the 82 components are not seasonally adjusted for 2011.

Seasonally adjusted data, including the all items index levels, are subject to revision for up to five years after their original release. For this reason, BLS advises against the use of these data in escalation agreements.

Effective with the calculation of the seasonal factors for 1990, the Bureau of Labor Statistics has used an enhanced seasonal adjustment procedure called Intervention Analysis Seasonal Adjustment for some CPI series. Intervention Analysis Seasonal Adjustment allows for better estimates of seasonally adjusted data. Extreme values and/or sharp movements which might distort the seasonal pattern are estimated and removed from the data prior to calculation of seasonal factors. Beginning with the calculation of seasonal factors for 1996, X-12-ARIMA software was used for Intervention Analysis Seasonal Adjustment.

For the seasonal factors introduced in January 2011, BLS adjusted 29 series using Intervention Analysis Seasonal Adjustment, including selected food and beverage items, motor fuels, electricity and vehicles. For example, this procedure was used for the Motor fuel series to offset the effects of events such as damage to oil refineries from Hurricane Katrina.

For a complete list of Intervention Analysis Seasonal Adjustment series and explanations, please refer to the article "Intervention Analysis Seasonal Adjustment", located on our website at <http://www.bls.gov/cpi/cpisapage.htm>.

For additional information on seasonal adjustment in the CPI, please write to the Bureau of Labor Statistics, Division of Consumer Prices and Price Indexes, Washington, DC 20212 or contact David Levin at (202) 691-6968, or by e-mail at [Levin.David@bls.gov](mailto:Levin.David@bls.gov). If you have general questions about the CPI, please call our information staff at (202) 691-7000.



**Table 1. Consumer Price Index for All Urban Consumers (CPI-U): U.S. city average, by expenditure category and commodity and service group**

(1982-84=100, unless otherwise noted)

CPI-U Expenditure category	Relative importance, December 2010	Unadjusted indexes		Unadjusted percent change to May 2011 from—		Seasonally adjusted percent change from—		
		Apr. 2011	May 2011	May 2010	Apr. 2011	Feb. to Mar.	Mar. to Apr.	Apr. to May
All items .....	100.000	224.906	225.964	3.6	0.5	0.5	0.4	0.2
All items (1967=100) .....	-	673.717	676.887	-	-	-	-	-
Food and beverages .....	14.792	226.248	227.082	3.4	.4	.7	.4	.4
Food .....	13.742	226.150	226.976	3.5	.4	.8	.4	.4
Food at home .....	7.816	224.233	225.356	4.4	.5	1.1	.5	.5
Cereals and bakery products .....	1.090	255.956	259.140	3.1	1.2	.5	.1	1.0
Meats, poultry, fish, and eggs .....	1.813	220.747	223.227	8.5	1.1	1.1	1.1	1.5
Dairy and related products <sup>1</sup> .....	.839	209.707	211.327	6.9	.8	1.3	1.7	.8
Fruits and vegetables .....	1.152	286.501	284.174	2.3	-.8	1.9	-1.1	-1.3
Nonalcoholic beverages and beverage materials .....	.926	166.086	165.862	3.0	-.1	.8	1.2	.0
Other food at home .....	1.996	195.239	196.161	2.5	.5	1.0	.3	.4
Sugar and sweets <sup>1</sup> .....	.297	203.783	205.285	1.6	.7	.7	-.8	.7
Fats and oils .....	.232	213.818	216.370	8.5	1.2	2.8	.8	.4
Other foods .....	1.466	207.892	208.518	1.7	.3	.8	.5	.4
Other miscellaneous foods <sup>1 2</sup> .....	.432	123.769	123.343	2.3	-.3	1.0	.9	-.3
Food away from home <sup>1</sup> .....	5.926	230.082	230.501	2.2	.2	.3	.3	.2
Other food away from home <sup>1 2</sup> .....	.329	162.218	162.483	2.5	.2	.0	.2	.2
Alcoholic beverages .....	1.051	226.053	226.989	2.0	.4	.0	.3	.4
Housing .....	41.460	217.901	218.484	1.2	.3	.1	.2	.2
Shelter .....	31.955	250.447	250.745	1.1	.1	.1	.1	.2
Rent of primary residence <sup>3</sup> .....	5.925	252.221	252.393	1.4	.1	.1	.1	.1
Lodging away from home <sup>2</sup> .....	.776	136.597	139.094	2.2	1.8	.8	.0	2.9
Owners' equivalent rent of residences <sup>3 4</sup> .....	24.905	258.400	258.587	.9	.1	.1	.1	.1
Owners' equivalent rent of primary residence <sup>3 4</sup> .....	23.310	258.387	258.574	.9	.1	.1	.1	.1
Tenants' and household insurance <sup>1 2</sup> .....	.349	126.574	126.780	1.4	.2	-.5	.6	.2
Fuels and utilities .....	5.096	217.254	219.956	3.4	1.2	.6	.6	.4
Household energy .....	4.000	190.622	193.498	2.9	1.5	.6	.7	.5
Fuel oil and other fuels <sup>1</sup> .....	.309	348.657	347.002	27.3	-.5	4.6	2.0	-.5
Energy services <sup>3</sup> .....	3.691	190.459	193.698	1.1	1.7	.2	.6	.6
Water and sewer and trash collection services <sup>2</sup> .....	1.095	178.033	178.521	5.1	.3	.5	.4	.3
Household furnishings and operations .....	4.409	124.893	125.141	-.7	.2	-.1	.2	.2
Household operations <sup>1 2</sup> .....	.772	151.338	151.730	.8	.3	-.5	.5	.3
Apparel .....	3.601	122.226	122.271	1.0	.0	-.5	.2	1.2
Men's and boys' apparel .....	.882	113.487	114.976	1.0	1.3	-.7	.0	1.5
Women's and girls' apparel .....	1.520	110.144	109.237	.5	-.8	-.9	.3	1.3
Infants' and toddlers' apparel .....	.192	112.323	111.199	-2.8	-1.0	.1	.3	.6
Footwear .....	.700	128.581	129.618	.7	.8	-.2	-.6	1.5
Transportation .....	17.308	216.867	220.270	13.1	1.6	2.2	1.4	-.3
Private transportation .....	16.082	212.210	215.829	13.6	1.7	2.3	1.5	-.2
New and used motor vehicles <sup>2</sup> .....	6.333	98.972	99.915	3.1	1.0	.8	.8	1.0
New vehicles .....	3.513	141.462	142.494	3.4	.7	.7	.7	1.1
Used cars and trucks .....	2.055	145.968	148.361	4.1	1.6	.8	1.2	1.1
Motor fuel .....	5.079	326.024	337.359	36.8	3.5	5.6	3.2	-2.0
Gasoline (all types) .....	4.865	325.282	336.999	36.9	3.6	5.6	3.3	-2.0
Motor vehicle parts and equipment <sup>1</sup> .....	.408	141.590	143.328	5.3	1.2	-.2	.6	1.2
Motor vehicle maintenance and repair <sup>1</sup> .....	1.172	251.458	252.376	2.0	.4	.0	.3	.4
Public transportation .....	1.227	272.187	271.417	7.2	-.3	1.3	.2	-.5
Medical care .....	6.627	398.813	399.375	3.0	.1	.2	.4	.2
Medical care commodities <sup>1</sup> .....	1.633	324.241	324.399	3.0	.0	.5	.5	.0
Medical care services .....	4.994	421.716	422.438	3.0	.2	.1	.3	.3
Professional services .....	2.830	334.978	335.132	2.4	.0	.2	.1	.0

See footnotes at end of table.

**Table 1. Consumer Price Index for All Urban Consumers (CPI-U): U.S. city average, by expenditure category and commodity and service group-Continued**

(1982-84=100, unless otherwise noted)

CPI-U Expenditure category	Relative importance, December 2010	Unadjusted indexes		Unadjusted percent change to May 2011 from—		Seasonally adjusted percent change from—			
		Apr. 2011	May 2011	May 2010	Apr. 2011	Feb. to Mar.	Mar. to Apr.	Apr. to May	
Hospital and related services .....	1.703	637.188	639.456	5.6	0.4	0.2	0.6	0.7	
Recreation <sup>2</sup> .....	6.293	113.368	113.659	.0	.3	.0	.0	.3	
Video and audio <sup>2</sup> .....	1.816	98.918	98.707	-.9	-.2	.1	.0	.0	
Education and communication <sup>2</sup> .....	6.421	130.643	130.600	1.0	.0	.1	.1	.1	
Education <sup>2</sup> .....	3.107	204.316	204.668	3.9	.2	.3	.3	.4	
Educational books and supplies .....	.204	522.440	523.640	4.2	.2	.6	.3	.5	
Tuition, other school fees, and childcare .....	2.903	587.151	588.138	3.9	.2	.3	.3	.4	
Communication <sup>2</sup> .....	3.313	83.655	83.466	-1.6	-.2	-.1	-.1	-.2	
Information and information processing <sup>2</sup> .....	3.138	80.281	80.081	-1.9	-.2	-.1	-.1	-.2	
Telephone services <sup>1 2</sup> .....	2.334	101.191	101.159	-1.2	.0	-.1	-.1	.0	
Information technology, hardware and services <sup>5</sup> .....	.804	9.176	9.096	-4.0	-.9	-.3	-.3	-.6	
Personal computers and peripheral equipment <sup>6</sup> .....	.228	72.010	70.898	-7.5	-1.5	-1.6	-.2	-.6	
Other goods and services .....	3.497	386.226	385.476	1.5	-.2	-.1	.1	-.2	
Tobacco and smoking products <sup>1</sup> .....	.906	827.287	825.690	3.4	-.2	.1	-.4	-.2	
Personal care .....	2.591	208.485	208.080	.9	-.2	-.2	.3	-.2	
Personal care products <sup>1</sup> .....	.671	161.418	159.478	-.5	-1.2	-.2	.3	-1.2	
Personal care services <sup>1</sup> .....	.638	230.380	230.505	.2	.1	-.1	.2	.1	
Miscellaneous personal services .....	1.055	361.062	361.786	2.3	.2	.1	.4	.1	
<b>Commodity and service group</b>									
Commodities .....	40.012	185.311	186.804	6.5	.8	1.2	.8	.1	
Food and beverages .....	14.792	226.248	227.082	3.4	.4	.7	.4	.4	
Commodities less food and beverages .....	25.219	162.578	164.286	8.4	1.1	1.4	1.0	-.1	
Nondurables less food and beverages .....	15.474	214.256	217.037	12.9	1.3	1.8	1.1	.1	
Apparel .....	3.601	122.226	122.271	1.0	.0	-.5	.2	1.2	
Nondurables less food, beverages, and apparel .....	11.873	276.504	281.064	16.7	1.6	2.9	1.5	-.5	
Durables .....	9.745	112.242	112.941	1.3	.6	.4	.6	.6	
Services .....	59.988	264.256	264.883	1.6	.2	.2	.2	.2	
Rent of shelter <sup>4</sup> .....	31.607	260.963	261.272	1.1	.1	.0	.1	.2	
Tenants' and household insurance <sup>1 2</sup> .....	.349	126.574	126.780	1.4	.2	-.5	.6	.2	
Energy services <sup>3</sup> .....	3.691	190.459	193.698	1.1	1.7	.2	.6	.6	
Water and sewer and trash collection services <sup>2</sup> .....	1.095	178.033	178.521	5.1	.3	.5	.4	.3	
Household operations <sup>1 2</sup> .....	.772	151.338	151.730	.8	.3	-.5	.5	.3	
Transportation services .....	6.140	267.587	267.832	3.3	.1	.5	.2	.1	
Medical care services .....	4.994	421.716	422.438	3.0	.2	.1	.3	.3	
Other services .....	11.340	312.593	313.205	1.4	.2	.1	.1	.3	
<b>Special indexes</b>									
All items less food .....	86.258	224.731	225.826	3.6	.5	.5	.4	.1	
All items less shelter .....	68.045	217.475	218.847	4.7	.6	.8	.6	.2	
All items less medical care .....	93.373	216.346	217.414	3.6	.5	.6	.4	.2	
Commodities less food .....	26.270	164.964	166.657	8.1	1.0	1.4	1.0	-.1	
Nondurables less food .....	16.525	215.090	217.771	12.2	1.2	1.7	1.1	.1	
Nondurables less food and apparel .....	12.923	270.729	274.948	15.5	1.6	2.7	1.5	-.4	
Nondurables .....	30.266	221.504	223.413	8.2	.9	1.4	.9	.2	
Services less rent of shelter <sup>4</sup> .....	28.382	288.612	289.676	2.2	.4	.2	.3	.3	
Services less medical care services .....	54.994	252.100	252.713	1.5	.2	.1	.2	.2	
Energy .....	9.079	253.495	260.376	21.5	2.7	3.5	2.2	-1.0	
All items less energy .....	90.921	223.798	224.275	1.8	.2	.2	.2	.3	
All items less food and energy .....	77.179	224.118	224.534	1.5	.2	.1	.2	.3	
Commodities less food and energy commodities .....	20.882	145.214	145.657	1.2	.3	.1	.4	.5	
Energy commodities .....	5.388	329.419	340.183	36.2	3.3	5.5	3.1	-1.9	
Services less energy services .....	56.297	271.775	272.158	1.6	.1	.2	.1	.2	
Purchasing power of the consumer dollar (1982-84=\$1.00) .....	-	\$ .445	\$ .443	-	-	-	-	-	
Purchasing power of the consumer dollar (1967=\$1.00) .....	-	\$ .148	\$ .148	-	-	-	-	-	

<sup>1</sup> Not seasonally adjusted.

<sup>2</sup> Indexes on a December 1997=100 base.

<sup>3</sup> This index series was calculated using a Laspeyres estimator. All other item stratum index series were calculated using a geometric means estimator.

<sup>4</sup> Indexes on a December 1982=100 base.

<sup>5</sup> Indexes on a December 1988=100 base.

<sup>6</sup> Indexes on a December 2007=100 base.

- Data not available.

NOTE: Index applies to a month as a whole, not to any specific date.

**Table 2. Consumer Price Index for All Urban Consumers (CPI-U): Seasonally adjusted U.S. city average, by expenditure category and commodity and service group**

(1982-84=100, unless otherwise noted)

CPI-U	Seasonally adjusted indexes				Seasonally adjusted annual rate percent change for					
					3 months ended—			6 months ended—		
	Feb. 2011	Mar. 2011	Apr. 2011	May 2011	Aug. 2010	Nov. 2010	Feb. 2011	May 2011	Nov. 2010	May 2011
<b>Expenditure category</b>										
All items .....	222.270	223.490	224.433	224.804	1.4	2.2	5.6	4.6	1.8	5.1
Food and beverages .....	223.779	225.345	226.330	227.137	.4	2.3	4.7	6.1	1.4	5.4
Food .....	223.544	225.228	226.231	227.024	.3	2.4	4.9	6.4	1.4	5.6
Food at home .....	220.800	223.219	224.373	225.440	-6	2.8	7.2	8.7	1.1	7.9
Cereals and bakery products .....	254.037	255.395	255.751	258.365	-2.1	2.9	5.0	7.0	.3	6.0
Meats, poultry, fish, and eggs .....	216.444	218.803	221.181	224.390	3.8	7.7	7.4	15.5	5.8	11.4
Dairy and related products <sup>1</sup> .....	203.510	206.161	209.707	211.327	2.0	5.3	4.5	16.3	3.6	10.2
Fruits and vegetables .....	284.574	289.890	286.716	283.011	-9.1	.1	22.9	-2.2	-4.6	9.7
Nonalcoholic beverages and beverage materials .....	162.958	164.340	166.375	166.304	.3	1.2	2.3	8.5	.7	5.4
Other food at home .....	192.706	194.602	195.207	196.037	-2	-2	3.3	7.1	-2	5.2
Sugar and sweets <sup>1</sup> .....	204.168	205.505	203.783	205.285	-3.5	.5	7.3	2.2	-1.5	4.7
Fats and oils .....	208.833	214.596	216.297	217.141	1.1	5.6	10.9	16.9	3.3	13.9
Other foods .....	204.936	206.493	207.448	208.214	.3	-1.3	1.4	6.6	-5	3.9
Other miscellaneous foods <sup>1 2</sup> .....	121.438	122.665	123.769	123.343	4.0	-3.8	2.7	6.4	.0	4.6
Food away from home <sup>1</sup> .....	228.606	229.282	230.082	230.501	1.5	1.9	1.9	3.4	1.7	2.6
Other food away from home <sup>1 2</sup> .....	161.836	161.886	162.218	162.483	2.5	2.2	3.7	1.6	2.4	2.6
Alcoholic beverages .....	225.415	225.409	226.141	227.134	2.1	1.3	1.7	3.1	1.7	2.4
Housing .....	217.561	217.852	218.192	218.637	.3	.4	2.0	2.0	.3	2.0
Shelter .....	249.867	250.102	250.278	250.707	.7	.9	1.4	1.4	.8	1.4
Rent of primary residence <sup>3</sup> .....	251.607	251.930	252.102	252.403	.6	1.7	2.0	1.3	1.1	1.6
Lodging away from home <sup>2</sup> .....	132.915	133.920	133.885	137.705	2.9	-7.8	-2	15.2	-2.6	7.2
Owners' equivalent rent of residences <sup>3 4</sup> .....	258.016	258.204	258.377	258.623	.6	.9	1.3	.9	.8	1.1
Owners' equivalent rent of primary residence <sup>3 4</sup> .....	258.003	258.196	258.364	258.610	.6	.9	1.3	.9	.8	1.1
Tenants' and household insurance <sup>1 2</sup> .....	126.529	125.863	126.574	126.780	4.6	3.3	-3.0	.8	4.0	-1.1
Fuels and utilities .....	218.231	219.480	220.834	221.800	-4	-5	8.0	6.7	-5	7.3
Household energy .....	192.096	193.211	194.539	195.475	-1.6	-2.0	8.4	7.2	-1.8	7.8
Fuel oil and other fuels <sup>1</sup> .....	326.919	341.884	348.657	347.002	-13.1	40.1	69.9	26.9	10.4	46.8
Energy services <sup>3</sup> .....	193.224	193.654	194.751	195.864	-7	-4.6	4.3	5.6	-2.7	5.0
Water and sewer and trash collection services <sup>2</sup> .....	176.725	177.684	178.316	178.806	4.4	4.9	6.5	4.8	4.6	5.6
Household furnishings and operations .....	124.493	124.375	124.661	124.859	-1.9	-2.1	.1	1.2	-2.0	.6
Household operations <sup>1 2</sup> .....	151.358	150.541	151.338	151.730	.1	-1.2	3.2	1.0	-5	2.1
Apparel .....	119.384	118.770	118.951	120.342	2.8	-2.6	.8	3.2	.1	2.0
Men's and boys' apparel .....	111.408	110.648	110.613	112.243	5.3	-3.5	-.8	3.0	.8	1.1
Women's and girls' apparel .....	106.622	105.708	105.993	107.363	2.1	-4.0	1.3	2.8	-1.0	2.0
Infants' and toddlers' apparel .....	109.634	109.796	110.154	110.858	4.1	-7.1	-11.7	4.5	-1.7	-3.9
Footwear .....	127.691	127.476	126.702	128.540	.7	-1.7	1.1	2.7	-5	1.9
Transportation .....	207.433	212.001	215.016	214.457	4.4	9.6	22.7	14.2	7.0	18.4
Private transportation .....	202.446	207.045	210.173	209.664	5.4	9.5	22.7	15.0	7.4	18.8
New and used motor vehicles <sup>2</sup> .....	97.490	98.249	99.051	99.997	2.9	-1.7	1.0	10.7	.6	5.7
New vehicles .....	139.065	140.078	141.092	142.637	1.3	-6	2.8	10.7	.3	6.7
Used cars and trucks .....	143.847	144.958	146.704	148.264	8.6	-3.4	-.9	12.9	2.4	5.8
Motor fuel .....	291.093	307.358	317.215	310.990	11.3	33.2	81.2	30.3	21.7	53.6
Gasoline (all types) .....	290.027	306.128	316.333	310.161	11.9	34.3	79.0	30.8	22.6	53.0
Motor vehicle parts and equipment <sup>1</sup> .....	140.912	140.686	141.590	143.328	4.5	3.3	6.3	7.0	3.9	6.7
Motor vehicle maintenance and repair <sup>1</sup> .....	250.851	250.820	251.458	252.376	1.8	2.4	1.6	2.5	2.1	2.0
Public transportation .....	269.625	273.100	273.781	272.417	-7.1	11.5	22.2	4.2	1.8	12.8
Medical care .....	395.615	396.364	397.793	398.739	1.9	3.7	3.1	3.2	2.8	3.2
Medical care commodities <sup>1</sup> .....	321.186	322.691	324.241	324.399	-.1	2.5	5.7	4.1	1.2	4.9
Medical care services .....	418.529	418.937	420.282	421.544	2.6	4.2	2.3	2.9	3.4	2.6
Professional services .....	333.483	333.993	334.196	334.323	3.8	2.8	2.2	1.0	3.3	1.6

See footnotes at end of table.

**Table 2. Consumer Price Index for All Urban Consumers (CPI-U): Seasonally adjusted U.S. city average, by expenditure category and commodity and service group-Continued**

(1982-84=100, unless otherwise noted)

CPI-U	Seasonally adjusted indexes				Seasonally adjusted annual rate percent change for					
					3 months ended—			6 months ended—		
	Feb. 2011	Mar. 2011	Apr. 2011	May 2011	Aug. 2010	Nov. 2010	Feb. 2011	May 2011	Nov. 2010	May 2011
<b>Expenditure category</b>										
Hospital and related services .....	628.137	629.315	633.287	637.925	3.5	8.2	4.5	6.4	5.8	5.5
Recreation <sup>2</sup> .....	113.242	113.228	113.183	113.512	-5	-1.4	.9	1.0	-1.0	.9
Video and audio <sup>2</sup> .....	98.395	98.466	98.437	98.424	-2.4	-4	-.7	.1	-1.4	-.3
Education and communication <sup>2</sup> .....	130.759	130.898	131.012	131.168	1.4	.7	.8	1.3	1.1	1.0
Education <sup>2</sup> .....	204.456	205.133	205.707	206.559	3.3	2.9	5.4	4.2	3.1	4.8
Educational books and supplies .....	519.288	522.344	523.912	526.573	-1.9	6.2	7.1	5.7	2.1	6.4
Tuition, other school fees, and childcare .....	587.834	589.674	591.314	593.725	3.6	2.7	5.3	4.1	3.1	4.7
Communication <sup>2</sup> .....	83.746	83.656	83.576	83.441	-2	-1.3	-3.4	-1.4	-.7	-2.4
Information and information processing <sup>2</sup> .....	80.383	80.290	80.201	80.056	-2	-1.4	-4.4	-1.6	-.8	-3.0
Telephone services <sup>1 2</sup> .....	101.316	101.258	101.191	101.159	.6	-.8	-3.9	-.6	-.1	-2.3
Information technology, hardware and services <sup>5</sup> .....	9.189	9.163	9.140	9.084	-2.6	-3.0	-5.8	-4.5	-2.8	-5.2
Personal computers and peripheral equipment <sup>6</sup> .....	72.289	71.142	71.002	70.586	-2	-4.1	-16.0	-9.1	-2.2	-12.6
Other goods and services .....	385.532	385.215	385.600	384.959	5.5	-.6	1.9	-.6	2.4	.6
Tobacco and smoking products <sup>1</sup> .....	829.535	830.693	827.287	825.690	12.8	-.9	4.3	-1.8	5.8	1.2
Personal care .....	207.783	207.451	208.030	207.704	3.1	-.5	1.0	-.2	1.3	.4
Personal care products <sup>1</sup> .....	161.325	160.981	161.418	159.478	2.5	-2.3	2.3	-4.5	.1	-1.1
Personal care services <sup>1</sup> .....	230.177	230.034	230.380	230.505	.6	-1.3	1.0	.6	-.3	.8
Miscellaneous personal services .....	358.894	359.233	360.622	361.046	3.0	2.0	1.9	2.4	2.5	2.2
<b>Commodity and service group</b>										
Commodities .....	180.549	182.627	184.090	184.226	1.9	3.8	11.2	8.4	2.8	9.8
Food and beverages .....	223.779	225.345	226.330	227.137	.4	2.3	4.7	6.1	1.4	5.4
Commodities less food and beverages .....	157.054	159.267	160.874	160.735	2.8	4.6	15.2	9.7	3.7	12.4
Nondurables less food and beverages .....	204.142	207.789	210.177	210.446	4.6	9.7	25.4	12.9	7.1	19.0
Apparel .....	119.384	118.770	118.951	120.342	2.8	-2.6	.8	3.2	.1	2.0
Nondurables less food, beverages, and apparel .....	260.797	268.329	272.442	271.195	5.4	13.6	32.3	16.9	9.5	24.4
Durables .....	111.024	111.490	112.128	112.843	1.5	-4.0	1.3	6.7	-1.2	4.0
Services .....	263.745	264.161	264.561	265.147	1.0	1.1	2.1	2.1	1.0	2.1
Rent of shelter <sup>4</sup> .....	260.509	260.389	260.645	261.102	.1	2.4	.8	.9	1.3	.9
Tenants' and household insurance <sup>1 2</sup> .....	126.529	125.863	126.574	126.780	4.6	3.3	-3.0	.8	4.0	-1.1
Energy services <sup>3</sup> .....	193.224	193.654	194.751	195.864	-.7	-4.6	4.3	5.6	-2.7	5.0
Water and sewer and trash collection services <sup>2</sup> .....	176.725	177.684	178.316	178.806	4.4	4.9	6.5	4.8	4.6	5.6
Household operations <sup>1 2</sup> .....	151.358	150.541	151.338	151.730	.1	-1.2	3.2	1.0	-.5	2.1
Transportation services .....	266.061	267.523	268.096	268.408	.1	4.4	5.1	3.6	2.2	4.4
Medical care services .....	418.529	418.937	420.282	421.544	2.6	4.2	2.3	2.9	3.4	2.6
Other services .....	312.190	312.626	312.898	313.707	1.9	.4	1.4	2.0	1.2	1.7
<b>Special indexes</b>										
All items less food .....	222.091	223.237	224.171	224.475	1.6	2.1	5.8	4.4	1.8	5.1
All items less shelter .....	213.995	215.619	216.878	217.230	1.7	2.8	7.7	6.2	2.2	6.9
All items less medical care .....	213.755	214.982	215.899	216.244	1.3	2.1	5.8	4.7	1.7	5.3
Commodities less food .....	159.553	161.713	163.303	163.195	2.8	4.5	14.7	9.4	3.6	12.0
Nondurables less food .....	205.455	208.940	211.335	211.633	4.0	9.8	23.4	12.6	6.8	17.9
Nondurables less food and apparel .....	256.414	263.245	267.120	266.147	5.0	12.6	29.6	16.1	8.7	22.6
Nondurables .....	214.660	217.689	219.744	220.165	1.8	6.6	14.3	10.7	4.2	12.5
Services less rent of shelter <sup>4</sup> .....	288.270	288.851	289.660	290.391	1.1	1.5	3.1	3.0	1.3	3.0
Services less medical care services .....	251.810	252.011	252.413	253.004	.4	1.9	1.7	1.9	1.1	1.8
Energy .....	237.620	245.941	251.319	248.837	5.0	15.8	45.1	20.3	10.3	32.1
All items less energy .....	222.483	222.992	223.494	224.157	1.0	.9	2.2	3.0	1.0	2.6
All items less food and energy .....	223.029	223.331	223.745	224.387	1.2	.7	1.8	2.5	.9	2.1
Commodities less food and energy commodities .....	143.793	143.917	144.423	145.183	1.4	-1.5	1.2	3.9	-.1	2.5
Energy commodities .....	294.905	311.218	320.989	314.950	9.7	33.6	80.6	30.1	21.1	53.3
Services less energy services .....	270.955	271.371	271.707	272.244	1.1	1.5	2.0	1.9	1.3	1.9

<sup>1</sup> Not seasonally adjusted.

<sup>2</sup> Indexes on a December 1997=100 base.

<sup>3</sup> This index series was calculated using a Laspeyres estimator. All other item stratum index series were calculated using a geometric means estimator.

<sup>4</sup> Indexes on a December 1982=100 base.

<sup>5</sup> Indexes on a December 1988=100 base.

<sup>6</sup> Indexes on a December 2007=100 base.

NOTE: Index applies to a month as a whole, not to any specific date.

**Table 3. Consumer Price Index for All Urban Consumers (CPI-U): Selected areas, all items index**

(1982-84=100, unless otherwise noted)

CPI-U	Pricing schedule 1	All items									
		Indexes				Percent change to May 2011 from—			Percent change to Apr. 2011 from—		
		Feb. 2011	Mar. 2011	Apr. 2011	May 2011	May 2010	Mar. 2011	Apr. 2011	Apr. 2010	Feb. 2011	Mar. 2011
U.S. city average .....	M	221.309	223.467	224.906	225.964	3.6	1.1	0.5	3.2	1.6	0.6
<b>Region and area size<sup>2</sup></b>											
Northeast urban .....	M	237.110	239.074	240.267	241.566	3.2	1.0	.5	2.8	1.3	.5
Size A - More than 1,500,000 .....	M	238.798	240.599	241.626	242.976	2.9	1.0	.6	2.6	1.2	.4
Size B/C - 50,000 to 1,500,000 <sup>3</sup> .....	M	141.547	143.001	143.987	144.697	3.8	1.2	.5	3.5	1.7	.7
Midwest urban .....	M	211.090	212.954	214.535	215.899	3.8	1.4	.6	3.3	1.6	.7
Size A - More than 1,500,000 .....	M	211.503	213.449	214.878	216.376	3.8	1.4	.7	3.2	1.6	.7
Size B/C - 50,000 to 1,500,000 <sup>3</sup> .....	M	135.665	136.834	138.005	138.827	3.8	1.5	.6	3.4	1.7	.9
Size D - Nonmetropolitan (less than 50,000) .....	M	208.156	209.713	211.314	212.210	4.0	1.2	.4	3.4	1.5	.8
South urban .....	M	214.735	217.214	218.820	219.820	4.0	1.2	.5	3.4	1.9	.7
Size A - More than 1,500,000 .....	M	216.145	218.391	219.944	220.982	3.7	1.2	.5	3.2	1.8	.7
Size B/C - 50,000 to 1,500,000 <sup>3</sup> .....	M	136.625	138.211	139.177	139.833	4.0	1.2	.5	3.4	1.9	.7
Size D - Nonmetropolitan (less than 50,000) .....	M	218.772	222.275	224.716	225.416	5.2	1.4	.3	4.7	2.7	1.1
West urban .....	M	224.431	226.558	227.837	228.516	3.2	.9	.3	3.0	1.5	.6
Size A - More than 1,500,000 .....	M	228.444	230.707	231.808	232.393	3.0	.7	.3	3.0	1.5	.5
Size B/C - 50,000 to 1,500,000 <sup>3</sup> .....	M	135.826	137.200	138.174	138.598	3.5	1.0	.3	3.0	1.7	.7
<b>Size classes</b>											
A <sup>4</sup> .....	M	201.974	203.833	204.963	205.944	3.3	1.0	.5	3.0	1.5	.6
B/C <sup>3</sup> .....	M	136.960	138.404	139.413	140.062	3.8	1.2	.5	3.3	1.8	.7
D .....	M	214.862	216.988	218.920	219.873	4.3	1.3	.4	3.8	1.9	.9
<b>Selected local areas<sup>5</sup></b>											
Chicago-Gary-Kenosha, IL-IN-WI .....	M	216.192	217.880	218.762	220.094	3.3	1.0	.6	2.7	1.2	.4
Los Angeles-Riverside-Orange County, CA ...	M	229.729	232.241	233.319	233.367	3.1	.5	.0	3.3	1.6	.5
New York-Northern N.J.-Long Island, NY-NJ-CT-PA .....	M	243.832	245.617	246.489	248.073	2.9	1.0	.6	2.5	1.1	.4
Boston-Brockton-Nashua, MA-NH-ME-CT ....	1	-	242.787	-	244.574	2.7	.7	-	-	-	-
Cleveland-Akron, OH .....	1	-	209.372	-	212.175	4.0	1.3	-	-	-	-
Dallas-Fort Worth, TX .....	1	-	206.967	-	208.794	3.3	.9	-	-	-	-
Washington-Baltimore, DC-MD-VA-WV <sup>6</sup> .....	1	-	146.044	-	147.554	3.9	1.0	-	-	-	-
Atlanta, GA .....	2	205.744	-	209.215	-	-	-	-	2.5	1.7	-
Detroit-Ann Arbor-Flint, MI .....	2	206.816	-	211.673	-	-	-	-	3.1	2.3	-
Houston-Galveston-Brazoria, TX .....	2	197.224	-	201.624	-	-	-	-	3.9	2.2	-
Miami-Fort Lauderdale, FL .....	2	227.451	-	231.503	-	-	-	-	4.0	1.8	-
Philadelphia-Wilmington-Atlantic City, PA-NJ-DE-MD .....	2	230.878	-	233.143	-	-	-	-	2.5	1.0	-
San Francisco-Oakland-San Jose, CA .....	2	229.981	-	234.121	-	-	-	-	2.8	1.8	-
Seattle-Tacoma-Bremerton, WA .....	2	229.482	-	231.314	-	-	-	-	2.1	.8	-

<sup>1</sup> Foods, fuels, and several other items priced every month in all areas; most other goods and services priced as indicated:

M - Every month.

1 - January, March, May, July, September, and November.

2 - February, April, June, August, October, and December.

<sup>2</sup> Regions defined as the four Census regions. See technical notes.

<sup>3</sup> Indexes on a December 1996=100 base.

<sup>4</sup> Indexes on a December 1986=100 base.

<sup>5</sup> In addition, the following metropolitan areas are published semiannually and appear in Tables 34 and 39 of the January and July issues of the CPI Detailed Report: Anchorage, AK; Cincinnati-Hamilton, OH-KY-IN; Denver-Boulder-Greeley, CO; Honolulu, HI; Kansas City, MO-KS; Milwaukee-Racine, WI; Minneapolis-St. Paul, MN-WI; Phoenix-Mesa, AZ; Pittsburgh, PA; Portland-Salem, OR-WA; St. Louis, MO-IL; San Diego, CA;

Tampa-St. Petersburg-Clearwater, FL.

<sup>6</sup> Indexes on a November 1996=100 base.

- Data not available.

NOTE: Local area indexes are byproducts of the national CPI program. Each local index has a smaller sample size than the national index and is, therefore, subject to substantially more sampling and other measurement error. As a result, local area indexes show greater volatility than the national index, although their long-term trends are similar. Therefore, the Bureau of Labor Statistics strongly urges users to consider adopting the national average CPI for use in their escalator clauses.

NOTE: Index applies to a month as a whole, not to any specific date.

**Table 4. Consumer Price Index for Urban Wage Earners and Clerical Workers (CPI-W): U.S. city average, by expenditure category and commodity and service group**

(1982-84=100, unless otherwise noted)

CPI-W Expenditure category	Relative importance, December 2010	Unadjusted indexes		Unadjusted percent change to May 2011 from—		Seasonally adjusted percent change from—		
		Apr. 2011	May 2011	May 2010	Apr. 2011	Feb. to Mar.	Mar. to Apr.	Apr. to May
All items .....	100.000	221.743	222.954	4.1	0.5	0.6	0.5	0.1
All items (1967=100) .....	-	660.503	664.113	-	-	-	-	-
Food and beverages .....	16.401	225.667	226.473	3.5	.4	.7	.5	.4
Food .....	15.315	225.439	226.257	3.6	.4	.8	.5	.4
Food at home .....	8.906	223.245	224.386	4.6	.5	1.1	.5	.5
Cereals and bakery products .....	1.236	256.912	259.862	3.2	1.1	.6	.2	.9
Meats, poultry, fish, and eggs .....	2.227	220.753	223.356	8.8	1.2	1.2	1.1	1.5
Dairy and related products <sup>1</sup> .....	.917	208.951	210.488	7.1	.7	1.4	1.8	.7
Fruits and vegetables .....	1.219	284.147	281.424	2.3	-1.0	2.0	-1.3	-1.4
Nonalcoholic beverages and beverage materials .....	1.091	165.553	165.160	2.8	-.2	.9	1.2	-.1
Other food at home .....	2.217	194.281	195.396	2.5	.6	.9	.3	.6
Sugar and sweets <sup>1</sup> .....	.324	202.613	204.161	1.6	.8	.5	-.9	.8
Fats and oils .....	.258	214.363	216.820	8.4	1.1	2.6	.7	.3
Other foods .....	1.635	207.711	208.632	1.8	.4	.7	.4	.6
Other miscellaneous foods <sup>1 2</sup> .....	.463	123.797	123.673	2.3	-.1	1.0	.8	-.1
Food away from home <sup>1</sup> .....	6.409	230.174	230.521	2.2	.2	.3	.4	.2
Other food away from home <sup>1 2</sup> .....	.326	163.275	163.498	2.9	.1	.1	.3	.1
Alcoholic beverages .....	1.086	227.552	228.197	2.1	.3	.2	.4	.4
Housing .....	39.228	214.523	215.135	1.2	.3	.1	.2	.2
Shelter .....	29.811	244.420	244.618	1.1	.1	.1	.1	.1
Rent of primary residence <sup>3</sup> .....	8.396	250.579	250.704	1.4	.0	.1	.1	.1
Lodging away from home <sup>2</sup> .....	.436	138.699	140.814	2.7	1.5	.8	.4	2.7
Owners' equivalent rent of residences <sup>3 4</sup> .....	20.672	234.133	234.272	.9	.1	.1	.1	.1
Owners' equivalent rent of primary residence <sup>3 4</sup> .....	19.942	234.127	234.266	.9	.1	.1	.1	.1
Tenants' and household insurance <sup>1 2</sup> .....	.306	127.654	127.859	1.4	.2	-.9	.6	.2
Fuels and utilities .....	5.633	215.338	218.216	3.2	1.3	.5	.6	.5
Household energy .....	4.476	188.078	191.103	2.8	1.6	.5	.7	.5
Fuel oil and other fuels <sup>1</sup> .....	.301	347.371	345.830	25.9	-.4	4.4	1.7	-.4
Energy services <sup>3</sup> .....	4.175	189.281	192.646	1.3	1.8	.2	.6	.6
Water and sewer and trash collection services <sup>2</sup> .....	1.157	178.392	178.896	5.0	.3	.5	.4	.3
Household furnishings and operations .....	3.784	120.873	121.238	-.6	.3	.0	.2	.3
Household operations <sup>1 2</sup> .....	.364	153.923	154.378	.8	.3	-.5	.6	.3
Apparel .....	3.668	121.140	121.312	.9	.1	-.6	.3	1.2
Men's and boys' apparel .....	.921	113.477	115.079	1.1	1.4	-1.2	.2	1.6
Women's and girls' apparel .....	1.502	109.589	108.704	.8	-.8	-1.0	.8	1.1
Infants' and toddlers' apparel .....	.280	115.274	114.150	-3.2	-1.0	.1	.3	.8
Footwear .....	.750	128.602	129.810	.9	.9	.0	-.4	1.6
Transportation .....	19.418	218.352	222.153	14.5	1.7	2.4	1.6	-.3
Private transportation .....	18.631	215.044	218.946	14.8	1.8	2.5	1.6	-.3
New and used motor vehicles <sup>2</sup> .....	6.914	98.172	99.236	3.4	1.1	.8	.9	1.0
New vehicles .....	3.320	142.475	143.476	3.4	.7	.8	.7	1.1
Used cars and trucks .....	3.003	146.907	149.304	4.1	1.6	.8	1.2	1.1
Motor fuel .....	6.470	327.663	338.832	36.8	3.4	5.6	3.2	-2.0
Gasoline (all types) .....	6.193	327.095	338.656	37.0	3.5	5.6	3.3	-2.0
Motor vehicle parts and equipment <sup>1</sup> .....	.479	141.505	143.257	5.2	1.2	.0	.6	1.2
Motor vehicle maintenance and repair <sup>1</sup> .....	1.184	253.990	255.042	2.1	.4	-.1	.2	.4
Public transportation .....	.787	268.501	268.226	7.2	-.1	1.1	.3	-.3
Medical care .....	5.355	400.683	401.316	3.2	.2	.2	.4	.3
Medical care commodities <sup>1</sup> .....	1.318	315.798	316.099	3.1	.1	.5	.5	.1
Medical care services .....	4.038	425.450	426.210	3.2	.2	.1	.3	.3
Professional services .....	2.220	338.558	338.828	2.6	.1	.1	.1	.0

See footnotes at end of table.



**Table 4. Consumer Price Index for Urban Wage Earners and Clerical Workers (CPI-W): U.S. city average, by expenditure category and commodity and service group-Continued**

(1982-84=100, unless otherwise noted)

CPI-W  Expenditure category	Relative importance, December 2010	Unadjusted indexes		Unadjusted percent change to May 2011 from—		Seasonally adjusted percent change from—		
		Apr. 2011	May 2011	May 2010	Apr. 2011	Feb. to Mar.	Mar. to Apr.	Apr. to May
Hospital and related services .....	1.414	640.223	642.422	6.1	0.3	0.2	0.5	0.8
Recreation <sup>2</sup> .....	5.862	109.933	110.219	.0	.3	.1	.0	.3
Video and audio <sup>2</sup> .....	1.959	99.523	99.331	-6	-2	.1	-1	.0
Education and communication <sup>2</sup> .....	6.118	124.993	124.934	.4	.0	.1	.0	.1
Education <sup>2</sup> .....	2.380	201.611	202.023	4.0	.2	.3	.3	.5
Educational books and supplies .....	.199	526.990	528.326	4.6	.3	.4	.3	.5
Tuition, other school fees, and childcare .....	2.181	566.469	567.600	3.9	.2	.3	.3	.5
Communication <sup>2</sup> .....	3.738	86.057	85.877	-1.8	-2	-1	-1	-2
Information and information processing <sup>2</sup> .....	3.605	83.719	83.534	-2.0	-2	-1	-1	-2
Telephone services <sup>1 2</sup> .....	2.823	100.643	100.610	-1.5	.0	-1	-1	.0
Information technology, hardware and services <sup>5</sup> .....	.782	9.710	9.623	-4.0	-9	-2	-3	-6
Personal computers and peripheral equipment <sup>6</sup> .....	.208	71.220	70.071	-8.7	-1.6	-1.8	-5	-6
Other goods and services .....	3.950	415.578	414.594	1.9	-2	-1	.0	-2
Tobacco and smoking products <sup>1</sup> .....	1.450	832.003	830.137	3.4	-2	.1	-4	-2
Personal care .....	2.500	206.422	205.919	1.0	-2	-2	.2	-2
Personal care products <sup>1</sup> .....	.717	162.088	160.083	-1	-1.2	-2	.3	-1.2
Personal care services <sup>1</sup> .....	.572	230.597	230.709	.2	.0	-1	.1	.0
Miscellaneous personal services .....	1.027	362.774	363.466	2.5	.2	.0	.4	.2
<b>Commodity and service group</b>								
Commodities .....	43.898	189.816	191.543	7.4	.9	1.3	.9	.0
Food and beverages .....	16.401	225.667	226.473	3.5	.4	.7	.5	.4
Commodities less food and beverages .....	27.497	169.461	171.531	9.7	1.2	1.6	1.1	-2
Nondurables less food and beverages .....	17.244	226.985	230.306	14.5	1.5	2.1	1.3	.0
Apparel .....	3.668	121.140	121.312	.9	.1	-6	.3	1.2
Nondurables less food, beverages, and apparel .....	13.576	297.497	302.815	18.4	1.8	3.4	1.5	-5
Durables .....	10.253	113.678	114.560	1.8	.8	.5	.6	.8
Services .....	56.102	259.419	260.062	1.6	.2	.1	.2	.2
Rent of shelter <sup>4</sup> .....	29.504	235.544	235.734	1.1	.1	.0	.1	.1
Tenants' and household insurance <sup>1 2</sup> .....	.306	127.654	127.859	1.4	.2	-9	.6	.2
Energy services <sup>3</sup> .....	4.175	189.281	192.646	1.3	1.8	.2	.6	.6
Water and sewer and trash collection services <sup>2</sup> .....	1.157	178.392	178.896	5.0	.3	.5	.4	.3
Household operations <sup>1 2</sup> .....	.364	153.923	154.378	.8	.3	-5	.6	.3
Transportation services .....	5.994	267.258	267.729	3.3	.2	.4	.3	.2
Medical care services .....	4.038	425.450	426.210	3.2	.2	.1	.3	.3
Other services .....	10.563	298.262	298.779	1.1	.2	.1	.1	.2
<b>Special indexes</b>								
All items less food .....	84.685	220.894	222.174	4.2	.6	.6	.5	.1
All items less shelter .....	70.189	215.853	217.445	5.4	.7	.9	.7	.1
All items less medical care .....	94.645	214.442	215.660	4.2	.6	.7	.5	.1
Commodities less food .....	28.583	171.564	173.603	9.4	1.2	1.6	1.1	-1
Nondurables less food .....	18.329	227.290	230.472	13.8	1.4	2.0	1.3	.0
Nondurables less food and apparel .....	14.662	290.247	295.146	17.1	1.7	3.2	1.4	-4
Nondurables .....	33.644	227.661	229.820	9.1	.9	1.6	1.0	.2
Services less rent of shelter <sup>4</sup> .....	26.598	254.540	255.643	2.1	.4	.2	.3	.3
Services less medical care services .....	52.065	247.899	248.528	1.4	.3	.1	.2	.2
Energy .....	10.946	256.400	263.494	22.5	2.8	3.7	2.3	-1.1
All items less energy .....	89.054	218.537	219.041	1.9	.2	.2	.3	.3
All items less food and energy .....	73.739	217.525	217.966	1.5	.2	.1	.2	.3
Commodities less food and energy commodities .....	21.812	147.472	148.045	1.4	.4	.1	.4	.6
Energy commodities .....	6.771	330.157	340.895	36.3	3.3	5.6	3.1	-1.9
Services less energy services .....	51.927	267.077	267.410	1.6	.1	.1	.1	.2
Purchasing power of the consumer dollar (1982-84=\$1.00) .....	-	\$ .451	\$ .449	-	-	-	-	-
Purchasing power of the consumer dollar (1967=\$1.00) .....	-	\$ .151	\$ .151	-	-	-	-	-

<sup>1</sup> Not seasonally adjusted.

<sup>2</sup> Indexes on a December 1997=100 base.

<sup>3</sup> This index series was calculated using a Laspeyres estimator. All other item stratum index series were calculated using a geometric means estimator.

<sup>4</sup> Indexes on a December 1984=100 base

<sup>5</sup> Indexes on a December 1988=100 base.

<sup>6</sup> Indexes on a December 2007=100 base.

- Data not available.

NOTE: Index applies to a month as a whole, not to any specific date.



**Table 5. Consumer Price Index for Urban Wage Earners and Clerical Workers (CPI-W): Seasonally adjusted U.S. city average, by expenditure category and commodity and service group**

(1982-84=100, unless otherwise noted)

Expenditure category	Seasonally adjusted indexes				Seasonally adjusted annual rate percent change for					
					3 months ended—			6 months ended—		
	Feb. 2011	Mar. 2011	Apr. 2011	May 2011	Aug. 2010	Nov. 2010	Feb. 2011	May 2011	Nov. 2010	May 2011
All items .....	218.702	220.122	221.212	221.529	1.6	2.5	6.6	5.3	2.0	5.9
Food and beverages .....	223.029	224.691	225.708	226.540	.6	2.4	4.6	6.4	1.5	5.5
Food .....	222.716	224.464	225.485	226.319	.5	2.5	4.9	6.6	1.5	5.8
Food at home .....	219.728	222.200	223.322	224.492	-3	2.8	7.3	9.0	1.3	8.1
Cereals and bakery products .....	254.751	256.158	256.620	259.020	-2.1	2.9	5.1	6.9	.4	6.0
Meats, poultry, fish, and eggs .....	216.300	218.838	221.143	224.521	4.3	7.7	7.6	16.1	6.0	11.8
Dairy and related products <sup>1</sup> .....	202.335	205.163	208.951	210.488	2.4	5.0	4.6	17.1	3.7	10.7
Fruits and vegetables .....	282.396	288.166	284.305	280.367	-9.1	.0	24.2	-2.8	-4.7	9.9
Nonalcoholic beverages and beverage materials .....	162.352	163.753	165.778	165.582	.2	1.4	1.6	8.2	.8	4.8
Other food at home .....	191.912	193.640	194.133	195.230	.1	-6	3.6	7.1	-3	5.3
Sugar and sweets <sup>1</sup> .....	203.373	204.408	202.613	204.161	-4.1	1.4	7.9	1.6	-1.4	4.7
Fats and oils .....	209.238	214.678	216.271	216.992	1.9	5.2	11.2	15.7	3.5	13.4
Other foods .....	204.938	206.374	207.193	208.363	.7	-1.9	1.6	6.9	-6	4.2
Other miscellaneous foods <sup>1 2</sup> .....	121.605	122.850	123.797	123.673	3.1	-3.5	3.0	7.0	-2	4.9
Food away from home <sup>1</sup> .....	228.596	229.293	230.174	230.521	1.5	2.1	1.7	3.4	1.8	2.6
Other food away from home <sup>1 2</sup> .....	162.728	162.850	163.275	163.498	2.5	4.0	3.3	1.9	3.2	2.6
Alcoholic beverages .....	226.181	226.591	227.525	228.327	2.5	1.1	.9	3.8	1.8	2.4
Housing .....	214.274	214.579	214.943	215.372	.1	.6	2.2	2.1	.3	2.1
Shelter .....	243.891	244.098	244.287	244.622	.5	1.1	1.5	1.2	.8	1.4
Rent of primary residence <sup>3</sup> .....	249.881	250.220	250.444	250.687	.3	1.7	2.1	1.3	1.0	1.7
Lodging away from home <sup>2</sup> .....	134.483	135.526	136.073	139.738	2.2	-5.8	-7	16.6	-1.9	7.6
Owners' equivalent rent of residences <sup>3 4</sup> .....	233.818	233.967	234.102	234.326	.5	1.0	1.4	.9	.8	1.1
Owners' equivalent rent of primary residence <sup>3 4</sup> .....	233.819	233.963	234.097	234.320	.5	1.0	1.4	.9	.8	1.1
Tenants' and household insurance <sup>1 2</sup> .....	128.035	126.914	127.654	127.859	4.8	3.3	-1.6	-5	4.0	-1.1
Fuels and utilities .....	216.540	217.690	219.052	220.111	-1	-9	7.3	6.8	-5	7.0
Household energy .....	189.762	190.781	192.083	193.096	-1.1	-2.2	7.6	7.2	-1.7	7.4
Fuel oil and other fuels <sup>1</sup> .....	326.950	341.440	347.371	345.830	-13.4	39.7	66.1	25.2	10.0	44.2
Energy services <sup>3</sup> .....	192.035	192.493	193.645	194.818	-3	-4.5	4.3	5.9	-2.4	5.1
Water and sewer and trash collection services <sup>2</sup> .....	177.057	177.954	178.669	179.223	4.0	4.8	6.1	5.0	4.4	5.5
Household furnishings and operations .....	120.458	120.458	120.697	121.006	-2.4	-1.7	-2	1.8	-2.1	.8
Household operations <sup>1 2</sup> .....	153.703	152.965	153.923	154.378	1.0	-2.0	2.4	1.8	-5	2.1
Apparel .....	118.404	117.667	118.059	119.528	.8	-1.9	.9	3.9	-6	2.4
Men's and boys' apparel .....	111.786	110.496	110.770	112.512	4.0	-2.9	.8	2.6	.5	1.7
Women's and girls' apparel .....	106.045	104.954	105.750	106.951	-7	-1.2	1.5	3.5	-9	2.5
Infants' and toddlers' apparel .....	112.572	112.693	112.979	113.863	.7	-5.7	-11.6	4.7	-2.5	-3.8
Footwear .....	127.194	127.212	126.695	128.720	.0	-3.6	2.5	4.9	-1.8	3.7
Transportation .....	207.843	212.833	216.214	215.500	5.5	10.1	25.2	15.6	7.8	20.3
Private transportation .....	204.353	209.373	212.808	212.103	6.0	10.2	25.3	16.1	8.1	20.6
New and used motor vehicles <sup>2</sup> .....	96.700	97.462	98.310	99.292	3.9	-2.0	.9	11.2	.9	5.9
New vehicles .....	140.067	141.132	142.121	143.630	1.2	-9	3.0	10.6	.1	6.7
Used cars and trucks .....	144.792	145.911	147.635	149.198	8.6	-3.2	-9	12.7	2.5	5.7
Motor fuel .....	292.327	308.827	318.736	312.340	11.1	32.5	82.5	30.3	21.3	54.2
Gasoline (all types) .....	291.392	307.739	318.025	311.697	11.8	32.2	82.1	30.9	21.5	54.4
Motor vehicle parts and equipment <sup>1</sup> .....	140.763	140.693	141.505	143.257	4.3	3.1	6.2	7.3	3.7	6.7
Motor vehicle maintenance and repair <sup>1</sup> .....	253.524	253.391	253.990	255.042	2.0	2.5	1.5	2.4	2.2	1.9
Public transportation .....	266.108	268.996	269.886	269.065	-5.4	9.4	22.2	4.5	1.7	13.0
Medical care .....	397.444	398.099	399.544	400.682	2.1	3.8	3.4	3.3	3.0	3.3
Medical care commodities <sup>1</sup> .....	312.764	314.190	315.798	316.099	.1	2.4	5.9	4.3	1.2	5.1
Medical care services .....	422.224	422.517	423.843	425.316	2.8	4.3	2.6	3.0	3.6	2.8
Professional services .....	337.029	337.449	337.866	337.966	3.8	2.8	2.5	1.1	3.3	1.8

See footnotes at end of table.

**Table 5. Consumer Price Index for Urban Wage Earners and Clerical Workers (CPI-W): Seasonally adjusted U.S. city average, by expenditure category and commodity and service group-Continued**

(1982-84=100, unless otherwise noted)

CPI-W	Seasonally adjusted indexes				Seasonally adjusted annual rate percent change for					
					3 months ended—			6 months ended—		
	Feb. 2011	Mar. 2011	Apr. 2011	May 2011	Aug. 2010	Nov. 2010	Feb. 2011	May 2011	Nov. 2010	May 2011
<b>Expenditure category</b>										
Hospital and related services .....	630.894	632.454	635.892	641.005	4.2	8.6	5.0	6.6	6.4	5.8
Recreation <sup>2</sup> .....	109.742	109.798	109.747	110.076	-8	-2.1	1.9	1.2	-1.5	1.5
Video and audio <sup>2</sup> .....	99.020	99.167	99.080	99.080	-2.1	-4	-3	.2	-1.3	.0
Education and communication <sup>2</sup> .....	125.081	125.167	125.225	125.340	1.2	.1	-.6	.8	.7	.1
Education <sup>2</sup> .....	201.628	202.290	202.814	203.768	3.2	2.9	5.4	4.3	3.1	4.8
Educational books and supplies .....	524.817	526.817	528.629	531.355	-1.2	5.8	9.1	5.1	2.2	7.1
Tuition, other school fees, and childcare .....	566.738	568.569	569.997	572.656	3.7	2.6	5.0	4.2	3.2	4.6
Communication <sup>2</sup> .....	86.152	86.067	85.989	85.857	-1	-1.6	-4.2	-1.4	-.8	-2.8
Information and information processing <sup>2</sup> .....	83.822	83.735	83.651	83.513	-1	-1.6	-4.9	-1.5	-.8	-3.2
Telephone services <sup>1 2</sup> .....	100.768	100.701	100.643	100.610	.5	-1.0	-4.7	-.6	-.2	-2.7
Information technology, hardware and services <sup>5</sup> .....	9.722	9.699	9.674	9.612	-2.2	-3.7	-5.8	-4.4	-2.9	-5.1
Personal computers and peripheral equipment <sup>6</sup> .....	71.808	70.542	70.196	69.761	-8	-5.7	-16.6	-10.9	-3.3	-13.8
Other goods and services .....	415.238	414.916	414.900	414.012	6.8	-.7	2.7	-1.2	3.0	.8
Tobacco and smoking products <sup>1</sup> .....	834.343	835.368	832.003	830.137	12.8	-.9	4.3	-2.0	5.7	1.1
Personal care .....	205.822	205.424	205.891	205.463	3.5	-.5	1.8	-.7	1.5	.6
Personal care products <sup>1</sup> .....	161.974	161.667	162.088	160.083	2.7	-1.4	2.9	-4.6	.6	-.9
Personal care services <sup>1</sup> .....	230.418	230.252	230.597	230.709	.6	-1.3	1.0	.5	-.4	.7
Miscellaneous personal services .....	360.922	360.899	362.235	363.012	2.4	2.5	2.6	2.3	2.5	2.5
<b>Commodity and service group</b>										
Commodities .....	184.454	186.856	188.512	188.580	2.3	4.3	12.7	9.3	3.3	11.0
Food and beverages .....	223.029	224.691	225.708	226.540	.6	2.4	4.6	6.4	1.5	5.5
Commodities less food and beverages .....	163.087	165.737	167.620	167.363	3.3	5.5	17.8	10.9	4.4	14.3
Nondurables less food and beverages .....	215.122	219.564	222.388	222.447	4.7	12.1	28.1	14.3	8.3	21.0
Apparel .....	118.404	117.667	118.059	119.528	.8	-1.9	.9	3.9	-.6	2.4
Nondurables less food, beverages, and apparel .....	278.583	287.991	292.312	290.849	6.4	15.2	34.7	18.8	10.7	26.5
Durables .....	112.365	112.981	113.705	114.560	2.2	-4.3	1.5	8.0	-1.1	4.7
Services .....	258.975	259.346	259.786	260.366	1.0	1.1	2.1	2.2	1.0	2.1
Rent of shelter <sup>4</sup> .....	235.112	235.189	235.375	235.649	.3	1.8	1.3	.9	1.1	1.1
Tenants' and household insurance <sup>1 2</sup> .....	128.035	126.914	127.654	127.859	4.8	3.3	-1.6	-.5	4.0	-1.1
Energy services <sup>3</sup> .....	192.035	192.493	193.645	194.818	-.3	-4.5	4.3	5.9	-2.4	5.1
Water and sewer and trash collection services <sup>2</sup> .....	177.057	177.954	178.669	179.223	4.0	4.8	6.1	5.0	4.4	5.5
Household operations <sup>1 2</sup> .....	153.703	152.965	153.923	154.378	1.0	-2.0	2.4	1.8	-.5	2.1
Transportation services .....	265.678	266.766	267.612	268.275	1.4	3.9	4.1	4.0	2.6	4.0
Medical care services .....	422.224	422.517	423.843	425.316	2.8	4.3	2.6	3.0	3.6	2.8
Other services .....	297.790	298.163	298.388	299.096	1.7	.1	.9	1.8	.9	1.3
<b>Special indexes</b>										
All items less food .....	217.800	219.161	220.262	220.488	1.8	2.5	6.9	5.0	2.1	6.0
All items less shelter .....	211.871	213.745	215.173	215.486	2.1	3.0	8.8	7.0	2.6	7.9
All items less medical care .....	211.434	212.864	213.934	214.223	1.6	2.4	6.8	5.4	2.0	6.1
Commodities less food .....	165.304	167.903	169.766	169.536	3.3	5.3	17.1	10.6	4.3	13.8
Nondurables less food .....	215.973	220.224	223.009	223.118	4.5	11.4	26.3	13.9	7.9	20.0
Nondurables less food and apparel .....	272.891	281.517	285.598	284.399	6.0	14.1	31.9	18.0	10.0	24.7
Nondurables .....	219.926	223.418	225.644	226.125	2.0	7.2	16.0	11.8	4.6	13.9
Services less rent of shelter <sup>4</sup> .....	254.399	254.803	255.550	256.332	1.2	1.2	2.9	3.1	1.2	3.0
Services less medical care services .....	247.660	247.897	248.319	248.874	.6	1.4	1.9	2.0	1.0	1.9
Energy .....	239.431	248.232	253.853	251.126	5.6	16.4	47.6	21.0	10.8	33.7
All items less energy .....	217.170	217.702	218.248	218.935	1.1	.9	2.3	3.3	1.0	2.8
All items less food and energy .....	216.431	216.717	217.167	217.826	1.3	.6	1.7	2.6	.9	2.2
Commodities less food and energy commodities .....	146.034	146.215	146.774	147.607	1.7	-1.6	1.3	4.4	.1	2.9
Energy commodities .....	295.209	311.719	321.527	315.284	9.9	32.8	81.7	30.1	20.8	53.8
Services less energy services .....	266.270	266.630	266.988	267.500	1.1	1.5	1.9	1.9	1.3	1.9

<sup>1</sup> Not seasonally adjusted.

<sup>2</sup> Indexes on a December 1997=100 base.

<sup>3</sup> This index series was calculated using a Laspeyres estimator. All other item stratum index series were calculated using a geometric means estimator.

<sup>4</sup> Indexes on a December 1984=100 base

<sup>5</sup> Indexes on a December 1988=100 base.

<sup>6</sup> Indexes on a December 2007=100 base.

NOTE: Index applies to a month as a whole, not to any specific date.

**Table 6. Consumer Price Index for Urban Wage Earners and Clerical Workers (CPI-W): Selected areas, all items index**

(1982-84=100, unless otherwise noted)

CPI-W	Pricing schedule 1	All items									
		Indexes				Percent change to May 2011 from—			Percent change to Apr. 2011 from—		
		Feb. 2011	Mar. 2011	Apr. 2011	May 2011	May 2010	Mar. 2011	Apr. 2011	Apr. 2010	Feb. 2011	Mar. 2011
U.S. city average .....	M	217.535	220.024	221.743	222.954	4.1	1.3	0.5	3.6	1.9	0.8
<b>Region and area size<sup>2</sup></b>											
Northeast urban .....	M	235.109	237.377	238.756	240.209	3.7	1.2	.6	3.3	1.6	.6
Size A - More than 1,500,000 .....	M	235.230	237.239	238.390	239.852	3.5	1.1	.6	3.0	1.3	.5
Size B/C - 50,000 to 1,500,000 <sup>3</sup> .....	M	142.691	144.395	145.520	146.390	4.2	1.4	.6	3.8	2.0	.8
Midwest urban .....	M	206.981	209.094	210.991	212.572	4.4	1.7	.7	3.7	1.9	.9
Size A - More than 1,500,000 .....	M	206.516	208.740	210.508	212.272	4.4	1.7	.8	3.7	1.9	.8
Size B/C - 50,000 to 1,500,000 <sup>3</sup> .....	M	135.841	137.189	138.552	139.532	4.3	1.7	.7	3.8	2.0	1.0
Size D - Nonmetropolitan (less than 50,000) .....	M	206.306	208.108	209.987	211.052	4.5	1.4	.5	3.8	1.8	.9
South urban .....	M	212.416	215.272	217.234	218.437	4.6	1.5	.6	3.9	2.3	.9
Size A - More than 1,500,000 .....	M	214.129	216.680	218.615	219.971	4.2	1.5	.6	3.6	2.1	.9
Size B/C - 50,000 to 1,500,000 <sup>3</sup> .....	M	135.919	137.789	138.962	139.744	4.6	1.4	.6	3.9	2.2	.9
Size D - Nonmetropolitan (less than 50,000) .....	M	219.352	223.059	225.869	226.539	5.5	1.6	.3	5.1	3.0	1.3
West urban .....	M	219.368	221.830	223.268	223.944	3.7	1.0	.3	3.4	1.8	.6
Size A - More than 1,500,000 .....	M	221.848	224.576	225.833	226.399	3.6	.8	.3	3.5	1.8	.6
Size B/C - 50,000 to 1,500,000 <sup>3</sup> .....	M	135.845	137.331	138.362	138.816	3.8	1.1	.3	3.3	1.9	.8
<b>Size classes</b>											
A <sup>4</sup> .....	M	201.033	203.220	204.607	205.758	3.9	1.2	.6	3.4	1.8	.7
B/C <sup>3</sup> .....	M	136.808	138.471	139.645	140.412	4.3	1.4	.5	3.8	2.1	.8
D .....	M	213.495	215.928	218.220	219.159	4.8	1.5	.4	4.2	2.2	1.1
<b>Selected local areas<sup>5</sup></b>											
Chicago-Gary-Kenosha, IL-IN-WI .....	M	210.106	212.256	213.633	215.358	4.2	1.5	.8	3.5	1.7	.6
Los Angeles-Riverside-Orange County, CA ...	M	222.814	225.770	227.051	226.842	3.7	.5	-.1	3.9	1.9	.6
New York-Northern N.J.-Long Island, NY-NJ-CT-PA .....	M	239.750	241.667	242.697	244.316	3.5	1.1	.7	2.9	1.2	.4
Boston-Brockton-Nashua, MA-NH-ME-CT ....	1	-	244.324	-	246.825	3.3	1.0	-	-	-	-
Cleveland-Akron, OH .....	1	-	201.146	-	204.105	4.4	1.5	-	-	-	-
Dallas-Fort Worth, TX .....	1	-	211.227	-	214.038	4.3	1.3	-	-	-	-
Washington-Baltimore, DC-MD-VA-WV <sup>6</sup> .....	1	-	146.572	-	148.638	4.6	1.4	-	-	-	-
Atlanta, GA .....	2	204.611	-	208.356	-	-	-	-	2.6	1.8	-
Detroit-Ann Arbor-Flint, MI .....	2	202.849	-	208.217	-	-	-	-	3.6	2.6	-
Houston-Galveston-Brazoria, TX .....	2	195.677	-	200.997	-	-	-	-	4.4	2.7	-
Miami-Fort Lauderdale, FL .....	2	225.346	-	229.675	-	-	-	-	4.1	1.9	-
Philadelphia-Wilmington-Atlantic City, PA-NJ-DE-MD .....	2	231.306	-	233.441	-	-	-	-	2.7	.9	-
San Francisco-Oakland-San Jose, CA .....	2	226.638	-	231.600	-	-	-	-	3.5	2.2	-
Seattle-Tacoma-Bremerton, WA .....	2	225.790	-	228.313	-	-	-	-	2.7	1.1	-

<sup>1</sup> Foods, fuels, and several other items priced every month in all areas; most other goods and services priced as indicated:

M - Every month.

1 - January, March, May, July, September, and November.

2 - February, April, June, August, October, and December.

<sup>2</sup> Regions defined as the four Census regions. See technical notes.

<sup>3</sup> Indexes on a December 1996=100 base.

<sup>4</sup> Indexes on a December 1986=100 base.

<sup>5</sup> In addition, the following metropolitan areas are published semiannually and appear in Tables 34 and 39 of the January and July issues of the CPI Detailed Report: Anchorage, AK; Cincinnati-Hamilton, OH-KY-IN; Denver-Boulder-Greeley, CO; Honolulu, HI; Kansas City, MO-KS; Milwaukee-Racine, WI; Minneapolis-St. Paul, MN-WI; Phoenix-Mesa, AZ; Pittsburgh, PA; Portland-Salem, OR-WA; St. Louis, MO-IL; San Diego, CA;

Tampa-St. Petersburg-Clearwater, FL.

<sup>6</sup> Indexes on a November 1996=100 base.

- Data not available.

NOTE: Local area indexes are byproducts of the national CPI program. Each local index has a smaller sample size than the national index and is, therefore, subject to substantially more sampling and other measurement error. As a result, local area indexes show greater volatility than the national index, although their long-term trends are similar. Therefore, the Bureau of Labor Statistics strongly urges users to consider adopting the national average CPI for use in their escalator clauses.

NOTE: Index applies to a month as a whole, not to any specific date.

**Table 7. Chained Consumer Price Index for All Urban Consumers (C-CPI-U): U.S. city average, by expenditure category and commodity and service group**

(December 1999=100, unless otherwise noted)

C-CPI-U	Relative importance, 2007-2008	Unadjusted indexes		Unadjusted percent change to May 2011 from—	
		Apr. 2011	May 2011	May 2010	Apr. 2011
<b>Expenditure category</b>					
All items .....	100.000	R129.408	R129.943	3.3	0.4
Food and beverages .....	14.519	131.682	132.139	3.3	.3
Food .....	13.493	131.848	132.312	3.4	.4
Food at home .....	7.780	127.631	128.239	4.3	.5
Food away from home .....	5.712	137.614	137.864	2.2	.2
Alcoholic beverages .....	1.027	130.206	130.585	1.8	.3
Housing .....	42.074	R129.071	R129.406	1.0	.3
Shelter .....	32.119	132.241	132.401	1.0	.1
Fuels and utilities .....	5.231	R159.248	R161.135	3.0	1.2
Household furnishings and operations .....	4.724	92.568	92.735	-1.1	.2
Apparel .....	3.772	91.583	91.536	.5	-.1
Transportation .....	17.199	145.823	147.954	12.8	1.5
Private transportation .....	16.013	146.817	149.155	13.3	1.6
Public transportation .....	1.186	133.188	132.800	7.1	-.3
Medical care .....	6.294	154.243	154.437	2.8	.1
Medical care commodities .....	1.570	136.565	136.610	2.8	.0
Medical care services .....	4.723	160.719	160.971	2.8	.2
Recreation .....	6.625	102.570	102.724	-.9	.2
Education and communication .....	6.288	112.667	112.573	.6	-.1
Education .....	2.804	188.494	188.805	3.8	.2
Communication .....	3.484	71.688	71.485	-2.0	-.3
Other goods and services .....	3.229	142.309	142.007	2.5	-.2
<b>Commodity and service group</b>					
Services .....	59.383	R137.017	R137.336	1.5	.2
Commodities .....	40.617	120.357	121.173	5.9	.7
Durables .....	10.376	81.185	81.572	.6	.5
Nondurables .....	30.241	140.911	141.964	7.8	.7
All items less food and energy .....	76.901	121.368	121.566	1.3	.2
Energy .....	9.606	R214.257	R219.671	20.3	2.5

R Revised.

Indexes for 2011 are initial estimates. Indexes for 2010 are interim adjustments.

NOTE: Index applies to a month as a whole, not to any specific date.