

L 2.3:2159

Educational Attainment of Workers, March 1981



U.S. Department of Labor
Bureau of Labor Statistics
January 1983

Special Labor Force Report

Bulletin 2159



SOUTHWEST MISSOURI STATE
UNIVERSITY LIBRARY
U.S. DEPOSITORY COPY

FEB 25 1983

Educational Attainment of Workers, March 1981



U.S. Department of Labor
Raymond J. Donovan, Secretary

Bureau of Labor Statistics
Janet L. Norwood, Commissioner

January 1983

Bulletin 2159

Preface

This bulletin on educational attainment of the labor force in 1981 is part of the Special Labor Force Report series. It discusses the growth of the college-educated labor force over the 1970-80 decade and the occupations of workers by years of school completed. This bulletin consists of an article first published in the *Monthly Labor Review*, April 1982, tables providing more detailed data, and an explanatory note.

The data for 1980 were rerun from the March 1980

Current Population Survey (CPS), using 1980 Census weights, by the Bureau of the Census for the Bureau of Labor Statistics. They may differ from previously published data for 1980. The data for 1981 were compiled and tabulated from the March 1981 CPS.

Material in this publication is in the public domain and may, with appropriate credit, be reproduced without permission.

Contents

	<i>Page</i>
Educational attainment of workers, March 1981	1
Appendixes:	
A. Explanatory note	5
B. Supplementary tables for 1981	9
B- 1. Historical comparisons of the civilian labor force, 18 to 64 years old, by sex and years of school completed, selected years, 1940-82	9
B- 2. Employment status of the population 16 years old and over by sex and years of school completed, March 1981	10
B- 3. Employment status of the population 16 years old and over by race, sex, and years of school completed, March 1981	11
B- 4. Employment status and hours of work of the labor force 16 years old and over by sex and years of school completed, March 1981	14
B- 5. Labor force status of the population 16 years old and over by age, sex, and years of school completed, March 1981	15
B- 6. Labor force participation rates of the population 16 years old and over by age, sex, race, and years of school completed, March 1981	17
B- 7. Labor force status of the population 16 years old and over by race, sex, and years of school completed, March 1981	18
B- 8. Labor force status of women 16 years old and over by age, marital status, and years of school completed, March 1981	19
B- 9. Labor force participation rates of women 16 years old and over by age, marital status, and years of school completed, March 1981	20
B-10. Occupation of employed persons 16 years old and over by sex and years of school completed, March 1981	21
B-11. Occupation group of employed persons 16 years old and over by race, sex, and years of school completed, March 1981	23
B-12. Unemployment rates of persons 16 years old and over by age, sex, and years of school completed, March 1981	25
B-13. Unemployment of persons 16 years old and over by age, race, and years of school completed, March 1981	26
B-14. Duration of unemployment of persons 16 years old and over by race, sex, and years of school completed, March 1981	27
B-15. Industry of employed persons 16 years and over by sex and years of school completed, March 1981	29
C. Revised 1980 tables	31
C- 1. Labor force status of the population 16 years and over by sex, race, and years of school completed, March 1980	31
C- 2. Labor force participation rates of the population 16 years and over by age, race, and years of school completed, March 1980	32
C- 3. Labor force status and labor force participation rates of women 16 years old and over by marital status, age, and years of school completed, March 1980	33

Contents—Continued

	<i>Page</i>
C- 4. Occupation groups of employed persons 16 years old and over by sex and years of school completed, March 1980.	35
C- 5. Occupation groups of employed persons 16 years old and over by race, sex, and years of school completed, March 1980.	37
C- 6. Unemployment rates of persons 16 years old and over by age, race, and years of school completed, March 1980.	38
C- 7. Duration of unemployment of persons 16 years and over by sex and years of school completed, March 1980.	39
C- 8. Industry of employed persons 16 years and over by sex and years of school completed, March 1980.	40

Educational attainment of workers, March 1981

ANNE MCDUGALL YOUNG

Employers continue to use education as one of the basic qualifications for hiring and promotion, and in recent years the educational level of workers has increased dramatically. In March 1981, there were almost as many workers age 25 to 64 who had completed a year or more of college as had ended their formal education with a high school diploma. (See table 1.) Each of these two groups accounted for about 40 percent of the work force. As recently as 1970, only 26 percent of the workers had completed any college after high school.¹ (See table 2.) This change reflects primarily the coming of age of the more highly educated baby boom generation,² and, to a lesser extent, early retirement among older and generally less educated workers.

To cope with the very large number of students who reached college age between the mid-1960's and early 1970's, the education industry expanded both in physical plant and staff. The number of institutions of higher education increased by 47 percent from 1963 to 1978, from 2,132 to 3,134, and the number of full-time equivalent teaching staff rose from 242,000 to 597,000.³ Over half (55 percent) of the new institutions were 2-year public colleges. The relatively easy accessibility of these colleges enabled many students to attend without leaving home and often while working at a full-time job. Indeed, among persons under age 35, part-time students accounted for half of the growth in total college enrollment during the 1970-80 decade.⁴

The relationship between men and women in terms of educational attainment did not change over the decade, except among the youngest group. The proportion of men with a year or more of college continued to be almost 6 percentage points above that of women, while women remained less likely to be high school dropouts. However, among workers 25 to 34—the age group comprising the largest part of the baby boom generation—the male-female difference in the proportion with some college narrowed substantially. Close to half of all workers in that age group had completed some college.

Participation rates

More education has historically been associated with higher rates of labor force participation, a pattern that persisted in March 1981. College graduates had the highest labor force participation rates, and high school dropouts, the lowest. (See table 2.)

Participation rates for men have continued their historical drift downward among all age and educational attainment groups except college graduates under age 55. This general trend among men has been observed over the past 25 years.⁵ Accounting in part for this trend are more widely available disability and pension benefits, which have made early retirement possible. Persons in poor health or who have been out of work for a number of months, have been the most likely to

¹ Data in this report are based on tabulations from the March 1981 Current Population Survey (CPS), conducted for the Bureau of Labor Statistics by the Bureau of the Census. The data relate to the labor force 25 to 64 years of age, unless otherwise specified. The data have been inflated using population weights based on results from the 1980 census. The March 1980 data in table 1 have also been revised to bring them in line with the new population weights and to make them comparable with the March 1981 data. Previously published data for the years 1971 through 1980 reflected population weights projected forward from the 1970 census.

As table 1 shows, the number of persons age 25 to 64 years old was revised upward by 2 million, and the number in the labor force was estimated to be 1.2 million greater than originally reported. Despite these significant changes in the data for 1980, the various relationships and percentages based on the new estimates are similar to those based on the previously published estimates. For example, the labor force participation rate for persons with 4 years of high school was estimated at 74.4 percent using the 1970 weights and 74.2 percent using the 1980 weights.

For a more complete description of changes in labor force data stemming from the use of 1980 census population weights in the CPS, see "Revisions in the Current Population Survey Beginning in January 1982," *Employment and Earnings*, February 1982.

Because the March estimates are based on a sample, they may differ from the figures that would have been obtained from a complete census. Sampling variability may be relatively large in cases where the numbers are small. Small estimates, or small differences between estimates, should be interpreted with caution. This report is the latest in a series on this subject. The most recent was published in the *Monthly Labor Review*, "Trends in educational attainment among workers in the 1970's," July 1980, pp. 44-47. Data on the educational attainment of the population are published by the Bureau of the Census in *Current Population Reports*, Series P-20.

² The expression "baby boom generation" usually refers to persons born between 1946 and 1964. The rate of births to women 15 to 44 years of age rose to over 24 per 1,000 in 1946, over 25 per 1,000 in 1957, and remained over 21 per 1,000 through 1964. See *Historical Statistics of the United States, Colonial Times to 1970*, Part 1 (Bureau of the Census, 1975), table B 5-10.

³ *The Condition of Education*, 1975 Edition (U.S. Department of Education, National Center for Education Statistics), table 67; *The Condition of Education*, 1980 Edition, tables 3.7 and 3.10; and unpublished data from the National Center for Education Statistics.

⁴ Unpublished data from the October 1970 and 1980 supplements to the Current Population Survey (CPS), Bureau of Labor Statistics.

⁵ *Employment and Training Report of the President, 1980*, table A-4.

Table 1. Labor force status of persons age 25–64, by sex and years of school completed, March 1980 and March 1981

[Numbers in thousands]

Years of school completed	Men			Women		
	1980		1981	1980		1981
	Original	Revised		Original	Revised	
Total population	49,848	50,782	51,840	53,664	54,777	55,813
Total labor force	44,755	45,417	46,363	32,010	32,593	33,910
High school:						
Less than 4 years	10,022	10,103	9,963	5,885	5,999	5,889
4 years only	16,017	16,232	16,917	14,586	14,801	15,635
College:						
1 to 3 years	7,880	8,042	8,083	5,566	5,686	6,086
4 years or more	10,837	11,040	11,402	5,974	6,106	6,300
Labor force participation rate (in percent)	89.8	89.4	89.4	59.6	59.5	60.8
High school:						
Less than 4 years	79.4	78.8	79.3	43.9	43.7	44.2
4 years only	92.2	91.9	91.2	61.4	61.2	62.4
College:						
1 to 3 years	92.7	92.4	92.0	66.5	66.4	68.0
4 years or more	95.5	95.3	95.4	73.6	73.4	74.3

NOTE: See text footnote 1 regarding revised numbers. Due to rounding, sums of individual items may not equal totals.

retire before age 65,⁶ and workers with less education are in these circumstances more often than are persons with extensive education.

While men have reduced their labor force participation, rates for women have increased at all levels of educational attainment and at all ages except among those 55–64 years of age. Among women age 25 to 34, the sharp rise in participation rates between 1970 and 1981 reflected the trend toward delayed marriage and childbearing. Increases in participation were also substantial among women 35 to 54, although to a lesser degree than among younger women. Most of the women over age 35 were married (72 percent), and such factors as expanded job opportunities in the white-collar and service sectors, as well as inflationary pressure on family budgets, boosted their labor force activity.

Occupations

The increase in the proportion of more highly educated workers was supported by growth in the demand for a trained labor force. Computerized design and manufacturing operations, word processing and other new business machines, engineering development, biological research, and changing medical care procedures all needed personnel with sufficient education to use the new technology which became available during the 1970's.⁷ Consequently, the proportion of workers in professional-technical and managerial occupations increased from 26 percent in 1970 to 29 percent in 1981. (See table 3.)

The number of college graduates in the professions

⁶ Karen Schwab, "Early Labor Force Withdrawal of Men: Participants and Nonparticipants Aged 58–63," *Social Security Bulletin*, August 1974, pp. 24–38.

⁷ *Occupational Outlook for College Graduates*, 1978–79 Edition (Bureau of Labor Statistics).

increased substantially over the decade. But because there were so many more graduates competing for available positions, those finding professional-technical jobs represented a smaller percentage of all graduates—54 percent in 1981 compared with 67 percent in 1970. The situation was intensified by the relative lack of growth in the demand for teachers, as the baby boom generation passed through the schools. This trend was especially important for the greatly increased number of women with college degrees. Whereas 50 percent of the employed female graduates were teachers in 1970, that proportion had declined to 29 percent in 1981.

A greater proportion of the college graduates were managers in 1981. This was, in part, a response to the growth of large scale enterprises, such as banking and investment services, in which the increased quantity and variety of transactions have created more complex management situations.⁸ College graduates were also more likely to be salesworkers, often as specialists in technical services and equipment, and small but growing proportions were in blue-collar and service occupations.

Many workers who had completed their formal education with 1 to 3 years of college had earned certificates and other awards of achievement. During 1970–71 to 1977–78, the number of associate degrees conferred increased by 63 percent.⁹ Among the recipients in 1977–78, 59 percent had been in occupational curricula such as science or engineering, data processing, or health sciences. Nevertheless, between 1970 and 1981, the proportion of workers with only 1 to 3 years of college who held white-collar jobs decreased 12 percentage points among men and almost 3 percentage points among women. Increased employment in craft and service work accounted for most of the change among men. The relatively smaller change among women reflected their continuing concentration in clerical occupations and their modest gain in the management field.

Workers with no formal education beyond high school were at an increasing disadvantage, compared to those with 1 to 3 years of college, in finding employment in professional-technical and managerial occupations. The proportion of male high school graduates with no college who were blue-collar workers rose from 52 to 57 percent over the decade. The proportion of women with no education beyond high school who were in clerical jobs dropped from 50 to 46 percent—with some shifting to managerial jobs and some to service jobs.

In March 1981, most high school dropouts were employed as operatives, nonfarm laborers, and service workers. These occupations frequently do not require a high school diploma as a condition of employment. However, the average educational attainment has risen substantially in these jobs, and is now well over 12

⁸ *Ibid.*

⁹ *The Condition of Education*, 1980 Edition, table 1.11.

Table 2. Years of school completed by persons in the labor force, and labor force participation rates, by age and sex, March 1970 and March 1981

Years of school completed	25 to 64 years		25 to 34 years		35 to 44 years		45 to 54 years		55 to 64 years	
	1970	1981	1970	1981	1970	1981	1970	1981	1970	1981
LABOR FORCE										
Men										
Total: Number (thousands)	39,302	46,363	11,211	17,312	10,518	11,982	10,429	9,847	7,142	7,222
Percent	100.0	100.0	100.0	100.0	100.0	100.0	100.0	100.0	100.0	100.0
High school: Less than 4 years	37.5	21.5	25.1	13.4	35.7	19.9	41.2	29.2	54.5	33.3
4 years only	34.5	36.5	40.4	37.8	34.6	36.7	34.0	35.2	25.9	34.6
College: 1 year or more	27.9	42.0	34.5	48.8	29.7	43.4	24.8	35.6	19.6	32.1
1 to 3 years	12.2	17.4	15.3	22.3	12.1	16.4	11.4	13.4	8.8	12.9
4 years or more	15.7	24.6	19.2	26.5	17.6	27.0	13.4	22.2	10.8	19.2
Women										
Total: Number (thousands)	22,458	33,910	5,735	12,945	6,014	8,904	6,516	7,189	4,198	4,872
Percent	100.0	100.0	100.0	100.0	100.0	100.0	100.0	100.0	100.0	100.0
High school: Less than 4 years	33.5	17.4	23.6	10.5	32.5	16.7	35.5	23.0	45.6	28.6
4 years only	44.3	46.1	48.2	43.6	47.2	47.0	45.6	49.2	33.0	46.7
College: 1 year or more	22.1	36.5	28.3	46.0	20.3	36.2	18.9	27.8	21.5	24.7
1 to 3 years	10.9	17.9	13.1	22.2	10.5	17.3	9.8	13.8	10.3	13.9
4 years or more	11.2	18.6	15.2	23.8	9.8	18.9	9.1	14.0	11.2	10.8
LABOR FORCE PARTICIPATION RATES										
Men										
Total	93.5	89.4	96.5	94.7	97.1	95.0	94.6	91.0	83.4	71.3
High school: Less than 4 years	89.3	79.3	95.1	89.3	94.7	89.0	91.5	83.7	79.4	62.1
4 years only	96.3	91.2	98.2	96.1	98.2	95.8	96.3	92.7	88.8	73.6
College: 1 to 3 years	95.6	92.0	95.7	94.2	98.7	96.0	97.5	92.8	87.5	76.8
4 years or more	96.3	95.4	95.4	96.1	98.8	98.3	97.4	98.2	90.0	84.3
Women										
Total	48.9	60.8	45.6	67.4	51.3	66.5	54.4	61.7	43.7	42.1
High school: Less than 4 years	42.9	44.2	40.3	47.4	47.6	52.9	47.9	48.5	36.7	32.7
4 years only	51.3	62.4	45.5	66.9	52.7	67.9	57.8	65.0	49.4	45.3
College: 1 to 3 years	50.8	68.0	45.5	71.6	52.7	72.8	57.0	66.9	50.6	50.7
4 years or more	60.9	74.3	57.6	78.7	57.7	74.0	67.5	76.3	64.1	54.7

NOTE: The labor force participation rate is the percent of the civilian population in the labor force. Due to rounding, sums of individual items may not equal totals.

years. Thus, even for these relatively unskilled occupations, dropouts faced increased competition from workers with more education.

The educational composition of the labor force may undergo several changes in the near future. First, the baby boom generation will have worked its way through the educational system by the mid-1980's, putting an end to the bulge in the number of workers in entry level jobs. Second, the next wave of labor force entrants will be smaller, and the relative shortage of

new high school and college graduates may lead to more readily available entry level jobs. On the other hand, these workers will face continuing competition for advancement from the huge group which preceded them. And third, modifications of national priorities and possible changes in spending patterns in both the private and public sectors may shift the demand for more highly educated workers from one occupational group to another.

Table 3. Occupation of employed persons age 18 and over, by years of school completed and by sex, March 1970 and March 1981

[In percent]

Years of school completed	Total		Professional-technical	Managers	Sales	Clerical	Craft	Operatives	Nonfarm laborers	Service	Farm
	Number (in thousands)	Percent									
Both sexes:											
1970	75,658	100.0	14.8	10.9	5.9	17.7	13.1	18.1	4.1	11.8	3.6
1981	96,644	100.0	16.9	12.1	6.2	18.7	12.9	13.8	3.9	13.1	2.6
Men:											
1970	47,062	100.0	14.4	14.8	5.5	7.5	20.4	19.9	6.3	6.1	5.0
1981	55,005	100.0	16.4	15.4	6.1	6.3	21.2	16.5	6.0	8.6	3.5
Women:											
1970	28,596	100.0	15.5	4.5	6.5	34.6	1.1	15.1	.4	21.0	1.4
1981	41,639	100.0	17.6	7.7	6.4	35.2	1.8	10.3	1.1	19.2	.9
High school:											
Less than 4 years:											
Men:											
1970	17,326	100.0	1.4	8.4	2.8	4.5	25.7	29.4	10.7	8.3	8.8
1981	11,741	100.0	1.5	7.0	2.2	3.8	26.4	28.7	11.0	12.2	7.2
Women:											
1970	8,585	100.0	1.8	3.3	6.5	14.7	1.7	30.4	.8	37.9	2.8
1981	6,779	100.0	2.4	3.9	5.5	15.2	2.8	27.3	2.1	39.0	1.9
4 years only:											
Men:											
1970	16,563	100.0	6.9	15.5	5.9	9.9	25.0	21.5	5.4	6.2	3.7
1981	20,966	100.0	5.7	12.7	5.3	6.9	29.1	21.0	6.9	9.0	3.5
Women:											
1970	13,053	100.0	6.7	4.7	7.3	50.0	1.1	12.0	.3	17.0	.9
1981	19,556	100.0	6.0	7.1	6.9	45.5	2.0	10.9	1.2	19.6	.8
College:											
1 to 3 years:											
Men:											
1970	6,334	100.0	19.7	22.3	10.8	12.8	13.1	9.7	3.3	5.7	2.4
1981	10,096	100.0	15.6	19.1	9.0	9.9	18.9	10.6	4.8	10.4	1.8
Women:											
1970	3,799	100.0	22.1	6.8	7.2	46.6	.6	2.9	.2	13.0	.7
1981	8,226	100.0	19.7	9.8	7.5	42.9	1.3	2.7	.8	14.9	.5
4 years or more:											
Men:											
1970	6,837	100.0	60.6	22.4	6.8	4.3	2.5	1.4	.3	.9	.8
1981	12,200	100.0	50.0	25.4	8.7	4.5	4.7	1.8	.8	2.9	1.2
Women:											
1970	3,159	100.0	80.9	4.1	1.9	10.6	.3	.5	—	1.6	.2
1981	7,080	100.0	61.9	10.3	4.4	16.6	.8	1.3	.3	3.9	.5

Appendix A. Explanatory Note

Estimates in this bulletin are based on the March 1980 and 1981 Current Population Survey, conducted and tabulated for the Bureau of Labor Statistics by the Bureau of the Census. Basic labor force concepts, sample design, estimating methods, and reliability of the data are described briefly in the following sections. For a more complete description of the methodology, see the Technical Note in the Bureau of Labor Statistics monthly publication, *Employment and Earnings*.

Definitions and Concepts

Population coverage. Each month, trained interviewers collect information from a sample of about 65,000 households (60,000 after May 1981) in 629 areas in 1,133 counties and independent cities, with coverage in every State and the District of Columbia. Estimates in this bulletin include persons 16 years old and over in the civilian noninstitutional population in the calendar weeks ended March 15, 1980, and March 14, 1981.

Educational attainment. Educational attainment applies only to years of school completed in "regular" schools, which include graded public, private, and parochial elementary and high schools; colleges; universities; and professional schools, whether day schools or night schools. Thus, "regular" schooling is that which could be expected to advance a person to an elementary certificate, a high school diploma or a college, university, or professional school degree. Schooling in other than regular schools is counted only if the credits obtained are regarded as transferable to a school in the regular school system.

Median years of school completed. The median is the value which divides the population group into two equal parts—one part having completed more schooling and one part having completed less schooling than the median. For purposes of computing these medians, the years of school completed are numbered consecutively; for example, the first year of high school is indicated by 9 and the first year of college by 13. The medians are expressed in continuous part years, although the respondents' answers to the survey questions are in terms of complete, discrete years.

Age. The age classification is based on the age of the person at his/her last birthday.

Race. The population is divided into three groups on the basis of race: White, black, and "other races." The last category includes Indians, Japanese, Chinese, and any other race except white and black.

Hispanic origin. Persons of Hispanic origin in this bulletin are those persons who indicated that their origin was Mexican, Puerto Rican, Cuban, Central or South American, or some other Hispanic origin. The latter category includes persons from Spain as well as persons with combinations of types of Spanish origins. Persons who reported that they were of one of the specific Hispanic-origin categories and a non-Hispanic category are included in the specific category. Persons of Hispanic origin may be of any race.

Employed. Employed persons are all those who during the survey week (a) did any work at all as paid employees or in their own business or profession, or on their own farm, or worked 15 hours or more as unpaid workers in an enterprise operated by a member of the family; or (b) did not work but had jobs or businesses from which they were temporarily absent because of illness, bad weather, vacation, labor-management dispute, or personal reasons, whether or not they were paid by their employers for the time off, or were seeking other jobs.

Unemployed. Unemployed persons are all those who did not work during the survey week, made specific efforts to find a job within the preceding 4 weeks, and were available for work during the survey week or would have been available except for temporary illness. Also included as unemployed are those who did not work at all, were available for work, and (a) were waiting to be called back to a job from which they had been laid off, or (b) were waiting to report to a new wage or salary job within 30 days.

Labor force. The labor force comprises all persons classified as employed or unemployed according to the above definitions.

Not in the labor force. All persons not classified as employed or unemployed are defined as "not in the labor force." Persons doing only incidental, unpaid family work (less than 15 hours) are also classified as not in the civilian labor force.

Marital status. Persons are classified into the following categories according to their marital status at the time of interview: Single; married, spouse present; and other marital status. The classification "married, spouse present," is applied to husband and wife if both were reported as members of the same household even though one may have been temporarily absent on business, vacation, on a visit, in a hospital, and the like at the time of interview. The term "other marital status" applies to persons who are married, spouse absent, widowed, or divorced.

Occupation, industry, and class of worker. Data on occupation, industry, and class of worker refer to the job held in the survey week. Persons with two jobs or more are classified in the job at which they worked the greatest number of hours in the survey week. The occupation and industry categories in this bulletin are the major groups used in the 1970 Census of Population.

Hours of work. The statistics on hours of work relate to the actual number of hours worked during the survey week. For persons working in more than one job, these figures relate to the number of hours worked in all jobs during the week.

Full-time and part-time workers. Full-time workers are persons who worked 35 hours or more during the survey week. Part-time workers are those who worked 1 to 34 hours during the survey week. Part-time workers are further classified by their usual status at their present job (either full time or part time) and by their reasons for working part time during the survey week (economic or other reasons). "Economic reasons" include: Slack work, material shortages, repairs to plant or equipment, start or termination of job during the week, and inability to find full-time work. "Other reasons" include: Labor dispute, bad weather, own illness, vacation, demands of housework, school, no desire for full-time work, full-time worker only during peak season, and similar reasons. Persons with a job but not at work during the survey week are classified according to whether they usually work full or part time.

Sums of distribution. Sums of individual items, whether absolute numbers or percentages, may not equal totals because of independent rounding of totals and components. Percentage totals, however, are always shown as 100 percent.

Reliability of the Estimates

Estimating procedure. The estimating procedure used in this survey inflates weighted sample results to independent estimates of the civilian noninstitutional population by age, sex, and race. These independent estimates

are based on statistics from the 1980 Census of Population and other data on births, deaths, immigration, and emigration.

Variability. Since the estimates are based on a sample, they may differ somewhat from the figures that would have been obtained if a complete census had been taken using the same schedules and procedures. As in any survey, the results are also subject to errors of response and reporting. These may be relatively large in the case of persons with irregular attachment to the labor force. Particular care should be exercised in the interpretation of figures based on relatively small estimates as well as small differences between estimates.

Summary measures (such as medians, means, and percent distributions) are shown in this bulletin only when the base of the measure is 75,000 or greater. Because of the large standard errors involved, there is little chance that summary measures would reveal useful information when computed on a smaller base. Estimated numbers are shown, however, even though the relative standard errors of these numbers are larger than those for corresponding percentages. These smaller estimates are provided primarily to permit such combinations of the categories as serve each user's needs.

The standard error is primarily a measure of sampling variability, that is, of the variations that might occur by chance because a sample rather than the entire population is surveyed. As calculated for this bulletin, the standard error also partially measures the effect of response and the enumeration errors but does not measure any systematic biases in the data. The chances are about 68 out of 100 that an estimate differs from a complete census by less than the standard error. The chances are about 95 out of 100 that the difference would be less than twice the standard error.

Computation of standard errors. The figures presented in tables 1 and 2 provide approximations of the standard errors of estimated numbers and percentages, and should be interpreted as providing an indication of the order of magnitude of the standard error rather than a precise standard error for any specific item. Standard errors for intermediate values may be found by interpolation.

The following examples illustrate the use of standard error tables. Table B-2 in the supplementary tables shows an estimated 6,926,000 men 16 years and over in the labor force with 4 years of college. The total population of men 16 years and over was 80,193,000. Table A-1 shows that the standard error on the labor force estimate to be approximately 113,000. The chances are 95 out of 100 that the difference would be twice the standard error, or 226,000.

The 6,926,000 men represented 89.8 percent of all men 16 years old and over in the civilian noninstitutional population with 4 years of college. Table A-3 shows the standard error on 89.8 percent with a base of 7,710,000 (population of men with 4 years of college) to be about 0.5 percent. Consequently, the chances are 68 out of 100 that a complete census count would have disclosed the figure to be between 89.3 and 90.3 percent, and 95 out of 100 that the figure would have been between 88.8 and 90.8 percent.

For a difference between two sample estimates, the standard error is approximately equal to the square root of the sum of the squares of the standard errors of each estimate considered separately:

$$\sqrt{S_O} = \sqrt{(S_1)^2 + (S_2)^2}$$

As shown in the previous example, in March 1981, the labor force participation rate of men with 4 years of college was 89.8 percent, while the rate for women with that amount of education was 66.5 percent, an apparent difference of 23.3 percentage points. Table 3 shows the standard error for 66.5 percent on a base of 6,973,000 women with 4 years of college to be approximately 0.7 percent and the standard error for 89.8 on a base of 7,710,000 men with 4 years of college to be approx-

imately 0.5. Thus, the standard error of the estimated difference of 23.3 percentage points is:

$$\sqrt{0.86} = \sqrt{(0.7)^2 + (0.5)^2}$$

This means the chances are 68 out of 100 that the estimated difference derived using complete census figures would differ by less than 0.86 percentage points and 95 out of 100 that it would differ by less than 1.7 percentage points. Therefore, the conclusion is that at both levels of confidence, the labor force participation rate of men with 4 years of college is greater than that of women with that much education. Of course, should the standard error be equal to or greater than the estimated difference of percentages based on the sample, there would be no significant difference between the percentages.

The reliability of an estimated percentage, computed by using sample data for both numerator and denominator, depends upon both the size of the percentage and the size of the total upon which the percentage is based. Estimated percentages are relatively more reliable than the corresponding estimates of the numerators, particularly if the proportions are large (50 percent or more).

Table A-1. Standard errors for estimated number of persons, total or white
(68 chances out of 100. Numbers in thousands)

Estimated number of persons	Total persons in age group									
	100	250	500	1,000	2,500	5,000	10,000	25,000	50,000	100,000
10	4.3	4.5	4.5	4.5	4.5	4.5	4.5	4.5	4.5	4.5
30	6.6	7.4	7.6	7.8	7.8	7.8	7.9	7.9	7.9	7.9
50	7.2	9.1	9.6	9.9	10.1	10.1	10.1	10.1	10.2	10.2
100		11.1	12.9	13.6	14.1	14.2	14.3	14.3	14.4	14.4
300				22.7	28.7	30.5	31.3	31.8	32.0	32.0
1,000					35.2	40.6	43.1	44.5	45.0	45.2
2,000					28.7	49.8	57.5	61.6	63.0	63.6
3,000						49.8	65.8	73.8	76.3	77.5
5,000							71.8	90.9	96.4	99.0
10,000								11.3	128.5	136.3
20,000								90.9	157.4	181.7
30,000									157.4	208.2
40,000									128.5	222.6
50,000										227.2
75,000										196.7

NOTE: For Hispanics, multiply standard error by 1.1.

Table A-2. Standard errors for estimated number of persons, black

(68 chances out of 100. Numbers in thousands)

Estimated number of persons	Total persons in age group						
	100	250	500	1,000	2,500	5,000	10,000
10	5.0	5.2	5.2	5.3	5.3	5.3	5.3
30	7.7	8.6	8.9	9.0	9.1	9.1	9.1
50	8.4	10.6	11.2	11.5	11.7	11.8	11.8
100	0	12.9	14.9	15.9	16.4	16.5	16.6
300		0	18.3	24.2	27.1	28.1	28.5
500			0	26.4	33.4	35.4	36.4
1,000				0	40.9	47.3	50.1
2,000					33.4	57.9	66.8
3,000					0	57.9	76.7
4,000						47.3	81.9
5,000						0	83.5
7,500							72.4

Table A-3. Standard errors for estimated number of persons, total or white

(68 chances out of 100)

Base of percentage (thousands)	Estimated percentage				
	2 or 98	5 or 95	10 or 90	25 or 75	50
100	4.3	4.5	4.5	4.5	4.5
250	1.3	2.0	2.7	3.9	4.5
5009	1.4	1.9	2.8	3.2
1,0006	1.0	1.4	2.0	2.3
2,5004	.6	.9	1.2	1.4
5,0003	.4	.6	.9	1.0
10,0002	.3	.4	.6	.7
25,00013	.2	.3	.4	.5
50,00009	.14	.2	.3	.3
100,00006	.10	.14	.2	.2
150,00005	.08	.11	.2	.2

NOTE: For Hispanic, multiply standard error by 1.1.

Table A-4. Standard errors for estimated percentages, blacks

(68 chances out of 100)

Base of percentage (thousands)	Estimated percentage				
	2 or 98	5 or 95	10 or 90	25 or 75	50
75	2.7	4.2	5.8	8.4	9.6
100	2.3	3.6	5.0	7.2	8.4
250	1.5	2.3	3.2	4.6	5.3
500	1.0	1.6	2.2	3.2	3.7
1,0007	1.2	1.6	2.3	2.6
2,5005	.7	1.0	1.4	1.7
5,0003	.5	.7	1.0	1.2
10,0002	.4	.5	.7	.8
20,0002	.3	.4	.5	.6

Appendix B. Supplementary Tables for 1981

Table B-1. Historical comparisons of the civilian labor force, 18 to 64 years old, by sex and years of school completed, selected years, 1940-82¹

Year and sex	Percent distribution by years of school completed (in years)								
	Total 18 to 64 years (thousands)	Total	Elementary		High school		College		Median school years completed
			Less than 5 years ^{2/}	5 to 8	1 to 3	4	1 to 3	4 or more	
Both sexes									
April 1940 ^{3/} -----	50,810	100.0	9.2	40.4	18.4	19.7	6.5	5.7	9.1
October 1952-----	56,968	100.0	6.8	29.6	19.1	27.8	8.5	8.1	11.1
March 1962-----	64,689	100.0	4.1	21.4	19.6	33.0	10.7	11.1	12.1
March 1970-----	75,650	100.0	2.1	14.1	17.4	39.9	13.6	12.9	12.4
March 1971-----	76,833	100.0	2.0	13.2	16.8	40.2	14.1	13.7	12.4
March 1972 ^{4/} -----	79,323	100.0	1.9	12.1	16.8	40.8	14.3	14.1	12.5
March 1973-----	81,297	100.0	1.8	11.0	15.9	41.5	15.0	14.7	12.5
March 1974-----	83,430	100.0	1.7	10.3	15.3	41.3	15.8	15.6	12.6
March 1975-----	85,037	100.0	1.6	9.5	14.7	41.7	16.1	16.4	12.6
March 1976-----	86,917	100.0	1.4	8.7	14.4	41.6	16.8	17.2	12.6
March 1977-----	89,537	100.0	1.4	8.1	14.4	41.3	17.1	17.6	12.6
March 1978-----	92,012	100.0	1.3	7.7	13.9	41.4	17.9	17.7	12.7
March 1979-----	94,822	100.0	1.2	7.0	13.0	41.8	18.4	18.5	12.7
March 1980-----	96,875	100.0	1.1	6.6	12.8	41.9	18.6	19.0	12.7
March 1980R ^{5/} -----	98,761	100.0	1.1	6.5	12.6	41.8	18.7	19.0	12.7
March 1981-----	101,202	100.0	1.1	6.2	12.4	42.6	18.7	19.0	12.7
March 1982-----	102,672	100.0	1.1	5.8	12.0	42.5	18.7	19.9	12.7
Men									
April 1940 ^{3/} -----	37,660	100.0	10.2	43.7	18.3	16.6	5.7	5.4	8.6
October 1952-----	38,658	100.0	7.6	31.7	19.4	24.6	8.3	8.3	10.6
March 1962-----	42,693	100.0	4.8	23.2	20.0	29.6	10.5	11.9	12.1
March 1965-----	44,111	100.0	4.0	20.3	19.7	32.8	10.6	12.6	12.2
March 1970-----	46,700	100.0	2.6	15.3	17.6	36.0	13.8	14.2	12.4
March 1971-----	47,404	100.0	2.4	14.7	17.1	36.5	14.2	15.0	12.4
March 1972 ^{4/} -----	48,757	100.0	2.3	13.7	17.0	36.9	14.5	15.6	12.5
March 1973-----	49,667	100.0	2.2	12.5	16.1	37.7	15.3	16.2	12.5
March 1974-----	50,572	100.0	2.1	11.7	15.6	37.8	15.7	17.0	12.5
March 1975-----	51,028	100.0	2.0	10.7	15.0	38.2	16.2	17.9	12.6
March 1976-----	51,677	100.0	1.8	9.8	14.7	38.2	16.7	18.8	12.6
March 1977-----	52,831	100.0	1.8	9.2	14.8	37.7	17.1	19.4	12.6
March 1978-----	53,734	100.0	1.7	8.9	14.3	37.7	17.8	19.7	12.7
March 1979-----	54,746	100.0	1.5	8.2	13.3	38.3	18.2	20.5	12.7
March 1980-----	55,603	100.0	1.5	7.7	13.5	38.2	18.5	20.7	12.7
March 1980R ^{5/} -----	56,631	100.0	1.4	7.7	13.4	38.1	18.6	20.8	12.7
March 1981-----	57,632	100.0	1.4	7.4	13.2	39.0	18.1	21.0	12.7
March 1982-----	58,195	100.0	1.3	6.8	12.7	39.3	10.0	21.9	12.7
Women									
April 1940-----	13,150	100.0	6.4	30.9	18.7	28.6	8.8	6.4	11.0
October 1952-----	18,310	100.0	5.2	25.0	18.4	34.7	9.0	7.7	12.0
March 1962-----	21,996	100.0	2.8	17.8	18.8	39.7	11.2	9.7	12.3
March 1965-----	23,845	100.0	2.0	15.8	18.9	42.9	10.5	9.9	12.3
March 1970-----	28,950	100.0	1.4	11.3	17.0	46.3	13.3	10.7	12.4
March 1971-----	29,429	100.0	1.4	10.7	16.4	46.2	14.0	11.4	12.5
March 1972 ^{4/} -----	30,566	100.0	1.2	9.6	16.4	47.1	13.9	11.8	12.5
March 1973-----	31,530	100.0	1.2	8.7	15.5	47.6	14.6	12.5	12.5
March 1974-----	32,857	100.0	1.1	8.1	14.8	46.6	16.0	13.5	12.6
March 1975-----	34,009	100.0	1.0	7.7	14.3	47.0	16.1	14.0	12.6
March 1976-----	35,240	100.0	.9	7.0	13.8	46.7	16.8	14.7	12.6
March 1977-----	36,706	100.0	.9	6.6	13.8	46.6	17.1	15.1	12.6
March 1978-----	38,278	100.0	.9	6.1	13.4	46.6	17.9	15.0	12.6
March 1979-----	40,076	100.0	.9	5.4	12.7	46.6	18.7	15.0	12.7
March 1980-----	41,272	100.0	.7	5.0	11.9	47.0	18.9	16.6	12.7
March 1980R ^{5/} -----	42,129	100.0	.7	5.0	11.9	46.9	19.0	16.6	12.7
March 1981-----	43,570	100.0	.7	4.6	11.3	47.4	19.5	16.5	12.7
March 1982-----	44,476	100.0	.7	4.4	11.1	46.8	19.7	17.3	12.7

¹ Data for 1940-59 include only persons reporting educational attainment.

² Includes persons reporting no school years completed.

³ 1940 Census of Population figures revised for comparability with labor force estimates from the Census Population Survey.

⁴ Not strictly comparable with prior years due to introduction of population adjustments.

⁵ Revised to 1980 Census population estimates. Not strictly comparable with prior years.

NOTE: In the following tables, population and labor force comprise all persons 16 years old and over in the civilian noninstitutional population and labor force. Because of rounding, sums of individual items may not equal totals.

Table B-2. Employment status of the population 16 years old and over by sex and years of school completed, March 1981

(Numbers in thousands)

Sex and years of school completed	POPULATION 16 YEARS OLD AND OVER	LABOR FORCE									NOT IN LABOR FORCE
		TOTAL			EMPLOYED			UNEMPLOYED			
		NUMBER	PERCENT OF POPULATION	TOTAL	AGRI-CULTURE	NON-AGRI-CULTURE	NUMBER	PERCENT OF LABOR FORCE	15 WEEKS OR MORE		
									TOTAL	PERCENT OF UNEMPLOYED	
Both sexes											
TOTAL	169,452	107,721	63.6	99,234	2,896	96,338	8,487	7.9	2,678	31.6	61,731
ELEMENTARY: LESS THAN 5 YEARS ¹	4,593	1,272	27.7	1,139	176	963	133	10.5	45	33.8	3,321
5 TO 7 YEARS	8,176	3,021	37.0	2,672	215	2,458	349	11.6	138	39.5	5,155
8 YEARS	11,277	4,228	37.5	3,714	314	3,400	513	12.1	181	35.2	7,050
HIGH SCHOOL: 1 TO 3 YEARS	30,789	16,043	52.1	13,584	517	13,067	2,459	15.3	652	26.5	14,746
4 YEARS	63,247	44,095	69.7	40,522	1,078	39,444	3,573	8.1	1,220	34.1	19,152
COLLEGE: 1 TO 3 YEARS	26,995	19,302	71.5	18,322	337	17,986	980	5.1	279	28.4	7,693
4 YEARS	14,684	11,563	78.8	11,236	184	11,052	327	2.8	111	34.0	3,120
5 YEARS OR MORE	9,691	8,196	84.6	8,044	75	7,969	152	1.8	52	34.4	1,495
MEDIAN SCHOOL YEARS COMPLETED	12.5	12.7	(X)	12.7	12.2	12.7	12.2	(X)	12.3	(X)	12.0
Men											
TOTAL	80,193	61,306	76.4	56,349	2,368	53,981	4,958	8.1	1,822	36.8	18,887
ELEMENTARY: LESS THAN 5 YEARS ¹	2,269	913	40.2	812	166	646	101	11.0	40	39.7	1,356
5 TO 7 YEARS	3,900	2,032	52.1	1,795	197	1,598	237	11.6	99	41.7	1,868
8 YEARS	5,333	2,827	53.0	2,505	267	2,237	323	11.4	134	41.6	2,506
HIGH SCHOOL: 1 TO 3 YEARS	14,596	9,446	64.7	7,975	428	7,547	1,472	15.6	446	30.3	5,149
4 YEARS	27,200	22,982	84.5	20,966	851	20,115	2,017	8.8	796	39.4	4,217
COLLEGE: 1 TO 3 YEARS	13,029	10,647	81.7	10,096	252	9,844	551	5.2	201	36.5	2,383
4 YEARS	7,710	6,926	89.8	6,751	145	6,606	175	2.5	77	44.2	785
5 YEARS OR MORE	6,157	5,533	89.9	5,449	63	5,386	84	1.5	29	34.8	624
MEDIAN SCHOOL YEARS COMPLETED	12.5	12.7	(X)	12.7	12.1	12.7	12.2	(X)	12.2	(X)	11.2
Women											
TOTAL	89,259	46,414	52.0	42,885	528	42,357	3,529	7.6	856	24.3	42,844
ELEMENTARY: LESS THAN 5 YEARS ¹	2,325	359	15.5	327	10	316	33	9.1	5	(?)	1,965
5 TO 7 YEARS	4,277	990	23.1	877	17	860	113	11.4	39	34.9	3,287
8 YEARS	5,945	1,400	23.6	1,210	47	1,163	191	13.6	46	24.3	4,544
HIGH SCHOOL: 1 TO 3 YEARS	16,193	6,597	40.7	5,610	90	5,520	987	15.0	206	20.9	9,596
4 YEARS	36,047	21,112	58.6	19,556	228	19,329	1,556	7.4	424	27.3	14,935
COLLEGE: 1 TO 3 YEARS	13,966	8,656	62.0	8,226	85	8,141	429	5.0	78	18.1	5,310
4 YEARS	6,973	4,638	66.5	4,485	39	4,446	153	3.3	34	22.3	2,335
5 YEARS OR MORE	3,534	2,663	75.3	2,595	12	2,582	68	2.5	23	(?)	871
MEDIAN SCHOOL YEARS COMPLETED	12.4	12.7	(X)	12.7	12.4	12.7	12.3	(X)	12.3	(X)	12.1

¹ Includes persons reporting no school years completed.

² Percent not shown where base is less than 75,000.

Table B-3. Employment status of the population 16 years old and over by race, Hispanic origin, sex, and years of school completed, March 1981

(Numbers in thousands)

Race, Hispanic origin, sex, and years of school completed	POPULATION 16 YEARS OLD AND OVER	LABOR FORCE									NOT IN LABOR FORCE
		TOTAL		EMPLOYED			UNEMPLOYED				
		NUMBER	PERCENT OF POPULATION	TOTAL	AGRI-CULTURE	NON AGRI-CULTURE	TOTAL		15 WEEKS OR MORE		
							NUMBER	PERCENT OF LABOR FORCE	TOTAL	PERCENT OF UNEMPLOYED	
White											
Both sexes											
TOTAL	147,371	94,303	64.0	87,743	2,656	85,087	6,560	7.0	2,017	30.8	53,068
ELEMENTARY: LESS THAN 5 YEARS ¹	3,227	949	29.4	854	122	732	95	10.0	29	31.0	2,278
5 TO 7 YEARS	6,413	2,330	36.3	2,042	176	1,866	288	12.3	108	37.6	4,084
8 YEARS	10,037	3,725	37.1	3,303	300	3,003	422	11.3	145	34.5	6,312
HIGH SCHOOL: 1 TO 3 YEARS	25,325	13,335	52.7	11,529	457	11,071	1,807	13.5	455	25.2	11,990
4 YEARS	56,286	38,964	69.2	36,170	1,026	35,144	2,794	7.2	929	33.3	17,322
COLLEGE: 1 TO 3 YEARS	23,781	16,980	71.4	16,239	320	15,919	741	4.4	207	27.9	6,800
4 YEARS	13,375	10,478	78.3	10,196	180	10,017	282	2.7	98	34.7	2,897
5 YEARS OR MORE	8,927	7,542	84.5	7,410	75	7,335	132	1.8	46	34.8	1,384
MEDIAN SCHOOL YEARS COMPLETED	12.5	12.7	(X)	12.7	12.3	12.7	12.2	(X)	12.3	(X)	12.1
Men											
TOTAL	70,154	54,328	77.4	50,373	2,165	48,209	3,955	7.3	1,403	35.5	15,825
ELEMENTARY: LESS THAN 5 YEARS ¹	1,593	693	43.5	623	116	507	70	10.1	24	(²)	900
5 TO 7 YEARS	3,156	1,637	51.9	1,441	161	1,280	196	12.0	75	38.3	1,519
8 YEARS	4,738	2,521	53.2	2,256	256	2,000	265	10.5	104	39.5	2,217
HIGH SCHOOL: 1 TO 3 YEARS	12,088	7,952	65.8	6,834	382	6,452	1,118	14.1	320	28.6	4,136
4 YEARS	24,172	20,469	84.7	18,830	810	18,019	1,639	8.0	626	38.2	3,703
COLLEGE: 1 TO 3 YEARS	11,524	9,489	82.3	9,057	237	8,821	431	4.5	156	36.1	2,035
4 YEARS	7,134	6,400	89.7	6,245	141	6,104	156	2.4	68	43.9	734
5 YEARS OR MORE	5,749	5,168	89.9	5,088	62	5,025	80	1.6	29	35.6	581
MEDIAN SCHOOL YEARS COMPLETED	12.6	12.7	(X)	12.7	12.2	12.8	12.2	(X)	12.3	(X)	11.4
Women											
TOTAL	77,217	39,975	51.8	37,370	491	36,878	2,605	6.5	614	23.6	37,242
ELEMENTARY: LESS THAN 5 YEARS ¹	1,634	255	15.6	231	6	225	25	9.6	5	(²)	1,379
5 TO 7 YEARS	3,257	693	21.3	601	15	586	92	13.2	33	36.1	2,564
8 YEARS	5,299	1,204	22.7	1,047	44	1,003	157	13.0	41	26.1	4,095
HIGH SCHOOL: 1 TO 3 YEARS	13,237	5,384	40.7	4,694	75	4,619	689	12.8	135	19.6	7,853
4 YEARS	32,115	18,496	57.6	17,340	216	17,124	1,155	6.2	303	26.2	13,619
COLLEGE: 1 TO 3 YEARS	12,257	7,492	61.1	7,182	83	7,099	310	4.1	51	16.4	4,766
4 YEARS	6,241	4,078	65.3	3,952	39	3,913	126	3.1	29	23.3	2,163
5 YEARS OR MORE	3,178	2,374	74.7	2,322	12	2,310	52	2.2	17	(B)	803
MEDIAN SCHOOL YEARS COMPLETED	12.5	12.7	(X)	12.7	12.5	12.7	12.3	(X)	12.3	(X)	12.2

See footnotes at end of table.

Table B-3. Continued—Employment status of the population 16 years old and over by race, Hispanic origin, sex, and years of school completed, March 1981

(Numbers in thousands)

Race, Hispanic origin, sex, and years of school completed	POPULATION 16 YEARS OLD AND OVER	LABOR FORCE									NOT IN LABOR FORCE
		TOTAL		EMPLOYED			UNEMPLOYED				
		NUMBER	PERCENT OF POPULATION	TOTAL	AGRI-CULTURE	NON AGRICULTURE	NUMBER	PERCENT OF LABOR FORCE	15 WEEKS OR MORE		
							TOTAL	PERCENT OF UNEMPLOYED			
Black											
Both sexes											
TOTAL	18,105	10,894	60.2	9,158	161	8,996	1,737	15.9	605	34.9	7,211
ELEMENTARY: LESS THAN 5 YEARS ¹	1,077	253	23.5	223	39	184	29	11.7	11	(²)	824
5 TO 7 YEARS	1,530	599	39.1	543	28	514	56	9.3	27	(²)	931
8 YEARS	1,084	435	40.1	354	12	342	81	18.5	34	42.3	650
HIGH SCHOOL: 1 TO 3 YEARS	4,891	2,438	49.9	1,837	41	1,795	602	24.7	185	30.7	2,453
4 YEARS	5,804	4,314	74.3	3,604	34	3,570	710	16.4	263	37.1	1,491
COLLEGE: 1 TO 3 YEARS	2,517	1,840	73.1	1,622	4	1,618	218	11.8	69	31.7	676
4 YEARS	806	680	84.3	643	2	641	37	5.4	13	(²)	126
5 YEARS OR MORE	395	336	85.0	331	-	331	4	1.3	3	(²)	59
MEDIAN SCHOOL YEARS COMPLETED	12.1	12.4	(X)	12.5	9.1	12.5	12.1	(X)	12.2	(X)	10.6
Men											
TOTAL	8,065	5,549	68.8	4,651	144	4,506	898	16.2	384	42.8	2,517
ELEMENTARY: LESS THAN 5 YEARS	562	181	32.2	158	39	118	23	12.8	11	(²)	381
5 TO 7 YEARS	636	338	53.2	301	28	273	37	11.0	21	(²)	297
8 YEARS	519	265	51.0	214	10	204	51	19.1	29	(²)	254
HIGH SCHOOL: 1 TO 3 YEARS	2,199	1,336	60.8	1,018	34	984	318	23.8	115	36.2	863
4 YEARS	2,503	2,089	83.5	1,749	28	1,721	340	16.3	154	45.2	414
COLLEGE: 1 TO 3 YEARS	1,134	885	78.1	777	3	774	108	12.2	44	41.0	249
4 YEARS	331	297	89.7	278	2	276	19	6.3	9	(²)	34
5 YEARS OR MORE	181	157	86.4	156	-	156	1	0.7	1	(²)	25
MEDIAN SCHOOL YEARS COMPLETED	12.0	12.3	(X)	12.4	8.4	12.4	12.1	(X)	12.1	(X)	10.2
Women											
TOTAL	10,039	5,346	53.2	4,507	17	4,490	839	15.7	221	26.4	4,694
ELEMENTARY: LESS THAN 5 YEARS ¹	514	72	14.0	65	-	65	6	(²)	-	(²)	443
5 TO 7 YEARS	894	260	29.1	241	-	241	19	7.2	6	(²)	634
8 YEARS	565	170	30.0	140	2	138	30	17.6	5	(²)	396
HIGH SCHOOL: 1 TO 3 YEARS	2,692	1,102	40.9	819	8	811	283	25.7	69	24.5	1,590
4 YEARS	3,302	2,224	67.4	1,855	6	1,849	369	16.6	109	29.6	1,077
COLLEGE: 1 TO 3 YEARS	1,383	955	69.1	846	1	845	110	11.5	25	22.4	428
4 YEARS	475	383	80.6	365	-	365	18	4.7	4	(²)	92
5 YEARS OR MORE	214	179	83.8	176	-	176	3	1.9	2	(²)	35
MEDIAN SCHOOL YEARS COMPLETED	12.1	12.5	(X)	12.5	11.6	12.5	12.2	(X)	12.3	(X)	10.7

See footnotes at end of table.

Table B-3. Continued—Employment status of the population 16 years old and over by race, Hispanic origin, sex, and years of school completed, March 1981

(Numbers in thousands)

Race, Hispanic origin, sex, and years of school completed	POPULATION 16 YEARS OLD AND OVER	LABOR FORCE									NOT IN LABOR FORCE
		TOTAL			EMPLOYED			UNEMPLOYED			
		NUMBER	PERCENT OF POPULATION	TOTAL	AGRI-CULTURE	NON AGRI-CULTURE	NUMBER	PERCENT OF LABOR FORCE	15 WEEKS OR MORE		
									TOTAL	PERCENT OF UNEMPLOYED	
Hispanic origin											
Both sexes											
TOTAL	8,862	5,616	63.4	4,987	206	4,781	630	11.2	164	26.1	3,246
ELEMENTARY: LESS THAN 5 YEARS ¹	1,090	485	44.5	431	70	362	54	11.1	18	(²)	604
5 TO 7 YEARS	1,251	733	58.6	636	51	585	97	13.2	35	35.9	518
8 YEARS	739	415	56.1	346	19	327	68	16.5	20	(²)	324
HIGH SCHOOL: 1 TO 3 YEARS	1,973	1,083	54.9	900	25	875	184	17.0	34	18.6	890
4 YEARS	2,329	1,721	73.9	1,554	29	1,524	167	9.7	41	24.3	608
COLLEGE: 1 TO 3 YEARS	964	752	78.0	705	9	696	48	6.3	12	(²)	212
4 YEARS	333	270	80.9	262	2	260	8	3.0	2	(²)	64
5 YEARS OR MORE	183	157	86.0	153	1	152	4	2.6	3	(²)	26
MEDIAN SCHOOL YEARS COMPLETED	11.1	12.1	(X)	12.1	6.9	12.2	10.6	(X)	10.0	(X)	9.5
Men											
TOTAL	4,255	3,429	80.6	3,047	183	2,864	382	11.1	112	29.2	826
ELEMENTARY: LESS THAN 5 YEARS ¹	511	353	69.1	314	65	249	39	11.0	15	(²)	158
5 TO 7 YEARS	602	478	79.4	425	46	379	53	11.1	20	(²)	124
8 YEARS	366	276	75.4	239	16	223	37	13.3	10	(²)	90
HIGH SCHOOL: 1 TO 3 YEARS	960	710	74.0	593	22	571	118	16.6	25	21.7	250
4 YEARS	1,033	915	88.5	818	25	794	96	10.5	27	28.5	118
COLLEGE: 1 TO 3 YEARS	486	422	86.8	388	7	382	34	8.0	10	(²)	64
4 YEARS	171	161	94.2	159	2	158	2	1.0	1	(²)	10
5 YEARS OR MORE	126	114	90.7	110	1	109	4	3.5	3	(²)	12
MEDIAN SCHOOL YEARS COMPLETED	11.1	11.6	(X)	11.8	6.8	12.0	10.7	(X)	10.6	(X)	9.4
Women											
TOTAL	4,607	2,187	47.5	1,940	23	1,917	248	11.3	53	21.2	2,420
ELEMENTARY: LESS THAN 5 YEARS ¹	579	132	22.9	117	5	112	15	11.4	3	(²)	447
5 TO 7 YEARS	649	255	39.3	212	5	206	44	17.1	15	(²)	393
8 YEARS	373	139	37.2	107	2	105	32	22.9	10	(²)	234
HIGH SCHOOL: 1 TO 3 YEARS	1,013	373	36.8	307	3	304	66	17.8	9	(²)	640
4 YEARS	1,296	806	62.2	735	5	731	71	8.8	13	(²)	490
COLLEGE: 1 TO 3 YEARS	478	330	69.1	316	2	314	14	4.2	2	(²)	148
4 YEARS	163	109	66.9	102	-	102	6	5.9	1	(²)	54
5 YEARS OR MORE	57	43	(²)	43	-	43	-	(²)	-	(²)	14
MEDIAN SCHOOL YEARS COMPLETED	11.0	12.2	(X)	12.3	8.4	12.3	10.5	(X)	8.9	(²)	9.6

¹ Includes persons reporting no school years completed.
² Percent not shown where base is less than 75,000.

NOTE: Dash indicates less than 0.05 percent.

Table B-4. Employment status and hours of work of the labor force 16 years old and over by sex and years of school completed, March 1981

(Percent distribution)

Sex and years of school completed	LABOR FORCE 16 YEARS OLD AND OVER	EMPLOYED NONAGRICULTURAL INDUSTRIES								UNEMPLOYED
		TOTAL	AGRI-CULTURE	TOTAL	FULL-TIME (35 HOURS OR MORE) ¹	PART-TIME (1 TO 34 HOURS)				
						USUALLY WORK FULL TIME		USUALLY WORK PART TIME		
						PART TIME FOR ECONOMIC REASONS	PART TIME FOR OTHER REASONS	FOR ECONOMIC REASONS	FOR OTHER REASONS	
Both sexes										
TOTAL	100.0	92.1	2.7	89.4	65.0	1.5	6.7	2.3	13.9	7.9
ELEMENTARY: LESS THAN 8 YEARS ²	100.0	88.8	9.1	79.7	55.6	2.9	6.9	3.8	10.5	11.2
8 YEARS	100.0	87.9	7.4	80.4	55.3	2.6	7.3	2.9	12.4	12.1
HIGH SCHOOL: 1 TO 3 YEARS	100.0	84.7	3.2	81.5	46.5	2.2	6.0	3.2	23.6	15.3
4 YEARS	100.0	91.9	2.4	89.5	66.8	1.6	6.8	2.6	11.7	8.1
COLLEGE: 1 TO 3 YEARS	100.0	94.9	1.7	93.2	67.0	1.1	6.6	1.6	16.9	5.1
4 YEARS OR MORE	100.0	97.6	1.3	96.3	78.4	0.4	7.2	1.1	9.1	2.4
MEDIAN SCHOOL YEARS COMPLETED	12.7	12.7	12.2	12.7	12.8	12.3	12.7	12.4	12.5	12.2
Men										
TOTAL	100.0	91.9	3.9	88.1	71.1	1.6	6.3	1.5	7.6	8.1
ELEMENTARY: LESS THAN 8 YEARS ²	100.0	88.5	12.3	76.2	57.6	2.8	7.0	2.1	6.8	11.5
8 YEARS	100.0	88.6	9.5	79.1	59.3	2.8	7.6	2.1	7.3	11.4
HIGH SCHOOL: 1 TO 3 YEARS	100.0	84.4	4.5	79.9	52.3	2.1	6.0	2.2	17.2	15.6
4 YEARS	100.0	91.2	3.7	87.5	73.6	1.8	6.2	1.6	4.3	8.8
COLLEGE: 1 TO 3 YEARS	100.0	94.8	2.4	92.5	73.5	1.3	6.4	1.3	10.0	5.2
4 YEARS OR MORE	100.0	97.9	1.7	96.3	84.6	0.3	6.2	0.6	4.6	2.1
MEDIAN SCHOOL YEARS COMPLETED	12.7	12.7	12.1	12.7	12.8	12.3	12.7	12.3	12.3	12.2
Women										
TOTAL	100.0	92.4	1.1	91.3	57.0	1.4	7.3	3.3	22.2	7.6
ELEMENTARY: LESS THAN 8 YEARS ²	100.0	89.2	2.0	87.2	51.1	3.1	6.6	7.7	18.6	10.8
8 YEARS	100.0	86.4	3.3	83.0	47.2	2.1	6.7	4.4	22.7	13.6
HIGH SCHOOL: 1 TO 3 YEARS	100.0	85.0	1.4	83.7	38.1	2.4	6.0	4.6	32.7	15.0
4 YEARS	100.0	92.6	1.1	91.6	59.4	1.4	7.4	3.6	19.8	7.4
COLLEGE: 1 TO 3 YEARS	100.0	95.0	1.0	94.1	59.0	0.9	6.9	2.0	25.3	5.0
4 YEARS OR MORE	100.0	97.0	0.7	96.3	67.9	0.6	9.0	2.1	16.7	3.0
MEDIAN SCHOOL YEARS COMPLETED	12.7	12.7	12.4	12.7	12.7	12.3	12.7	12.4	12.6	12.3

¹ Includes persons with a job but not at work during survey week.

² Includes persons reporting no school years completed.

Table B-5. Labor force status of the population 16 years old and over by age, sex, and years of school completed, March 1981

(Percent distribution)

Sex and years of school completed	TOTAL, 16 YEARS OLD AND OVER		16 AND 17 YEARS		18 AND 19 YEARS		20 TO 24 YEARS		25 TO 34 YEARS	
	LABOR FORCE	NOT IN LABOR FORCE	LABOR FORCE	NOT IN LABOR FORCE	LABOR FORCE	NOT IN LABOR FORCE	LABOR FORCE	NOT IN LABOR FORCE	LABOR FORCE	NOT IN LABOR FORCE
Both sexes										
TOTAL: NUMBER (THOUSANDS) . . .	107,721	61,731	3,400	4,753	5,110	3,078	15,819	4,955	30,258	7,228
PERCENT	100.0	100.0	100.0	100.0	100.0	100.0	100.0	100.0	100.0	100.0
ELEMENTARY: LESS THAN 5 YEARS ¹ . . .	1.2	5.4	0.1	0.6	0.3	1.1	0.4	1.8	0.6	2.1
5 TO 7 YEARS	2.8	8.4	1.2	2.0	0.9	1.6	1.1	2.1	1.5	3.4
8 YEARS	3.9	11.4	4.7	7.3	2.2	2.4	1.5	2.9	1.6	3.6
HIGH SCHOOL: 1 TO 3 YEARS	14.9	23.9	90.3	88.4	31.1	39.4	11.4	17.7	8.4	15.3
4 YEARS	40.9	31.0	3.4	1.7	55.7	41.6	48.8	31.6	40.3	42.3
COLLEGE: 1 TO 3 YEARS	17.9	12.5	0.3	-	9.7	13.7	26.9	38.5	22.3	19.1
4 YEARS	10.7	5.1	-	-	-	0.2	8.6	3.6	15.5	9.5
5 YEARS OR MORE	7.6	2.4	-	-	-	-	1.3	1.9	9.9	4.7
MEDIAN SCHOOL YEARS COMPLETED . . .	12.7	12.0	10.7	10.4	12.3	12.1	12.7	12.8	12.9	12.6
Men										
TOTAL: NUMBER (THOUSANDS) . . .	61,306	18,887	1,799	2,332	2,732	1,293	8,537	1,552	17,312	969
PERCENT	100.0	100.0	100.0	100.0	100.0	100.0	100.0	100.0	100.0	100.0
ELEMENTARY: LESS THAN 5 YEARS ¹ . . .	1.5	7.2	0.2	0.9	0.4	0.9	0.6	1.9	0.8	4.5
5 TO 7 YEARS	3.3	9.9	1.9	2.2	1.5	1.6	1.4	1.5	1.8	5.1
8 YEARS	4.6	13.3	6.6	8.2	2.8	1.5	2.1	2.1	1.9	4.3
HIGH SCHOOL: 1 TO 3 YEARS	15.4	27.3	88.5	87.0	36.1	40.5	14.1	11.6	8.9	14.5
4 YEARS	37.5	22.3	2.4	1.6	50.6	41.3	48.9	17.9	37.8	27.7
COLLEGE: 1 TO 3 YEARS	17.4	12.6	0.4	-	8.7	14.2	24.6	57.7	22.3	24.5
4 YEARS	11.3	4.2	-	-	-	-	6.9	4.3	15.9	8.2
5 YEARS OR MORE	9.0	3.3	-	-	-	-	1.3	3.0	10.6	11.2
MEDIAN SCHOOL YEARS COMPLETED . . .	12.7	11.2	10.6	10.3	12.2	12.1	12.6	14.0	13.0	12.8
Women										
TOTAL: NUMBER (THOUSANDS) . . .	46,414	42,844	1,600	2,421	2,378	1,785	7,282	3,402	12,945	6,258
PERCENT	100.0	100.0	100.0	100.0	100.0	100.0	100.0	100.0	100.0	100.0
ELEMENTARY: LESS THAN 5 YEARS ¹ . . .	0.8	4.6	-	0.2	0.3	1.3	0.2	1.7	0.4	1.8
5 TO 7 YEARS	2.1	7.7	0.5	1.8	0.3	1.6	0.7	2.3	1.0	3.2
8 YEARS	3.0	10.6	2.5	6.4	1.6	3.0	0.8	3.2	1.2	3.5
HIGH SCHOOL: 1 TO 3 YEARS	14.2	22.4	92.4	89.7	25.4	38.7	8.2	20.4	7.9	15.5
4 YEARS	45.5	34.9	4.5	1.8	61.4	41.8	48.6	37.8	43.6	44.5
COLLEGE: 1 TO 3 YEARS	18.6	12.4	0.1	-	10.9	13.3	29.5	29.7	22.2	18.2
4 YEARS	10.0	5.5	-	-	0.1	0.3	10.7	3.3	15.0	9.7
5 YEARS OR MORE	5.7	2.0	-	-	-	-	1.3	1.5	8.8	3.7
MEDIAN SCHOOL YEARS COMPLETED . . .	12.7	12.1	10.8	10.4	12.4	12.1	12.8	12.6	12.9	12.6

See footnotes at end of table.

Table B-5. Continued—Labor force status of the population 16 years old and over by age, sex, and years of school completed, March 1981

(Percent distribution)

Sex and years of school completed	35 TO 44 YEARS		45 TO 54 YEARS		55 TO 64 YEARS		65 YEARS AND OVER	
	LABOR FORCE	NOT IN LABOR FORCE	LABOR FORCE	NOT IN LABOR FORCE	LABOR FORCE	NOT IN LABOR FORCE	LABOR FORCE	NOT IN LABOR FORCE
Both sexes								
TOTAL: NUMBER (THOUSANDS) . . .	20,886	5,105	17,035	5,438	12,094	9,609	3,119	21,567
PERCENT.	100.0	100.0	100.0	100.0	100.0	100.0	100.0	100.0
ELEMENTARY: LESS THAN 5 YEARS ¹	1.1	3.6	1.8	5.6	2.5	5.7	5.0	9.2
5 TO 7 YEARS	2.7	5.1	4.3	7.9	5.7	9.5	10.2	14.2
8 YEARS	3.3	5.6	6.2	9.1	8.4	11.4	15.1	20.2
HIGH SCHOOL: 1 TO 3 YEARS	11.4	17.6	14.1	20.0	14.8	18.5	14.3	16.6
4 YEARS	41.1	42.6	41.1	40.0	39.5	37.9	27.7	24.0
COLLEGE: 1 TO 3 YEARS	16.8	12.9	13.6	10.9	13.3	9.8	12.2	8.3
4 YEARS	11.6	9.2	10.5	4.9	9.0	4.8	6.7	4.9
5 YEARS OR MORE	12.0	3.5	8.2	1.6	6.8	2.4	8.9	2.6
MEDIAN SCHOOL YEARS COMPLETED . . .	12.8	12.4	12.6	12.2	12.5	12.1	12.2	10.0
Men								
TOTAL: NUMBER (THOUSANDS) . . .	11,982	628	9,847	973	7,222	2,906	1,875	8,233
PERCENT.	100.0	100.0	100.0	100.0	100.0	100.0	100.0	100.0
ELEMENTARY: LESS THAN 5 YEARS ¹	1.4	10.4	2.4	11.0	2.8	6.9	6.3	10.6
5 TO 7 YEARS	3.2	8.5	5.1	11.7	6.2	11.1	10.3	15.0
8 YEARS	3.9	8.4	7.1	15.5	9.4	12.7	14.5	20.0
HIGH SCHOOL: 1 TO 3 YEARS	11.4	19.7	14.6	19.4	14.9	19.9	13.4	16.8
4 YEARS	36.7	30.9	35.2	28.0	34.6	30.9	24.7	21.1
COLLEGE: 1 TO 3 YEARS	16.4	13.0	13.4	10.5	12.9	9.7	11.7	7.3
4 YEARS	12.2	3.8	12.0	2.0	11.1	5.2	7.6	5.4
5 YEARS OR MORE	14.8	5.2	10.2	2.1	8.1	3.7	11.5	3.7
MEDIAN SCHOOL YEARS COMPLETED . . .	12.8	12.1	12.6	10.7	12.5	11.9	12.2	9.6
Women								
TOTAL: NUMBER (THOUSANDS) . . .	8,904	4,477	7,189	4,464	4,872	6,703	1,244	13,334
PERCENT.	100.0	100.0	100.0	100.0	100.0	100.0	100.0	100.0
ELEMENTARY: LESS THAN 5 YEARS ¹	0.8	2.6	1.1	4.5	2.1	5.1	3.0	8.3
5 TO 7 YEARS	2.1	4.7	3.3	7.1	4.9	8.9	9.9	13.6
8 YEARS	2.4	5.2	5.0	7.7	7.0	10.8	15.8	20.3
HIGH SCHOOL: 1 TO 3 YEARS	11.4	17.3	13.6	20.1	14.6	17.9	15.7	16.5
4 YEARS	47.0	44.2	49.2	42.6	46.7	41.0	32.3	25.8
COLLEGE: 1 TO 3 YEARS	17.3	12.9	13.8	11.0	13.9	9.8	13.0	9.0
4 YEARS	10.7	10.0	8.5	5.5	5.9	4.6	5.2	4.6
5 YEARS OR MORE	8.2	3.2	5.5	1.5	4.9	1.8	4.9	1.9
MEDIAN SCHOOL YEARS COMPLETED . . .	12.7	12.5	12.5	12.2	12.5	12.2	12.2	10.3

¹ Includes persons reporting no school years completed.

NOTE: Dash indicates less than 0.05 percent.

Table B-6. Labor force participation rates of the population 16 years old and over by age, sex, race, Hispanic origin, and years of school completed, March 1981

YEARS OF SCHOOL COMPLETED, RACE, HISPANIC ORIGIN, AND SEX	TOTAL 16 YEARS OLD AND OVER	PERCENT OF POPULATION IN LABOR FORCE								55 YEARS AND OVER		
		16 TO 19 YEARS				20 TO 25 YEARS				TOTAL	55 TO 64	65 AND OVER
		TOTAL	16 AND 17	18 AND 19	20 TO 24	25 TO 34	35 TO 44	45 TO 54				
All persons												
Both sexes												
TOTAL	63.6	52.1	41.7	62.4	76.2	80.7	80.4	75.8	32.8	55.7	12.6	
ELEMENTARY: LESS THAN 5 YEARS ¹	27.7	25.8	(B)	(B)	41.7	54.1	56.5	50.6	15.3	35.5	7.3	
5 TO 7 YEARS	37.0	38.0	30.4	48.9	63.3	64.0	68.6	63.3	20.2	42.8	9.4	
8 YEARS	37.5	39.4	31.6	60.5	62.6	64.9	70.7	68.3	21.5	48.2	9.7	
HIGH SCHOOL: 1 TO 3 YEARS	52.1	46.3	42.2	56.7	67.3	69.7	72.7	68.9	29.4	50.2	11.1	
4 YEARS	69.7	68.5	58.5	69.0	83.2	80.0	79.8	76.3	39.0	56.7	14.3	
COLLEGE: 1 TO 3 YEARS	71.5	54.4	(²)	54.1	69.0	83.0	84.2	79.6	42.1	63.1	17.5	
4 YEARS	78.8	(²)	(²)	(²)	88.4	87.3	83.7	87.2	46.1	70.2	16.5	
5 YEARS OR MORE	84.6	(²)	(²)	(²)	68.4	89.8	93.4	94.1	58.1	78.0	33.0	
Men												
TOTAL	76.4	55.6	43.6	67.9	84.6	94.7	95.0	91.0	45.0	71.3	18.5	
ELEMENTARY: LESS THAN 5 YEARS ¹	40.2	(B)	(B)	(B)	63.6	75.0	71.3	69.1	22.7	49.7	11.8	
5 TO 7 YEARS	52.1	50.6	39.9	(B)	84.0	86.3	87.6	81.6	29.2	58.2	13.6	
8 YEARS	53.0	48.1	38.3	79.4	85.0	88.7	90.0	82.3	32.0	64.8	14.2	
HIGH SCHOOL: 1 TO 3 YEARS	64.7	50.3	44.0	65.3	87.0	91.6	91.7	88.4	40.4	65.1	15.4	
4 YEARS	84.5	71.4	53.4	72.2	93.8	96.1	95.8	92.7	53.0	73.6	21.0	
COLLEGE: 1 TO 3 YEARS	81.7	56.9	(²)	56.2	70.1	94.2	96.0	92.8	56.7	76.8	26.8	
4 YEARS	89.8	(²)	(²)	(²)	89.8	97.2	98.4	98.4	61.3	84.2	24.3	
5 YEARS OR MORE	89.9	(²)	(²)	(²)	70.7	94.4	98.2	98.0	65.9	84.4	41.2	
Women												
TOTAL	52.0	48.6	39.8	57.1	68.2	67.4	66.5	61.7	23.4	42.1	8.5	
ELEMENTARY: LESS THAN 5 YEARS ¹	15.5	(²)	(²)	(²)	(²)	31.3	39.0	27.5	8.7	22.7	3.3	
5 TO 7 YEARS	23.1	16.8	(²)	(²)	40.8	39.8	47.8	43.0	13.0	28.5	6.4	
8 YEARS	23.6	27.1	20.8	40.4	34.1	40.7	47.9	51.5	13.6	32.0	6.8	
HIGH SCHOOL: 1 TO 3 YEARS	40.7	42.1	40.5	46.6	46.2	51.2	56.8	52.0	21.1	37.3	8.2	
4 YEARS	58.6	66.0	62.1	66.2	73.4	66.9	67.9	65.0	30.2	45.3	10.5	
COLLEGE: 1 TO 3 YEARS	62.0	52.3	(²)	52.3	68.0	71.6	72.8	66.9	31.2	50.7	12.0	
4 YEARS	66.5	(²)	(²)	(²)	87.4	76.2	68.1	71.4	27.8	48.2	9.6	
5 YEARS OR MORE	75.3	(²)	(²)	(²)	65.8	83.2	83.5	85.2	44.1	65.7	19.4	
White												
Men												
TOTAL	77.4	58.8	47.3	70.6	86.0	95.7	96.0	92.2	45.4	72.4	18.5	
ELEMENTARY: LESS THAN 5 YEARS ¹	43.5	(²)	(²)	(²)	(²)	78.3	77.0	74.4	21.1	51.9	9.2	
5 TO 7 YEARS	51.9	58.9	(²)	(²)	87.7	91.0	87.2	81.9	27.2	59.4	12.0	
8 YEARS	53.2	54.7	43.9	86.3	88.5	92.4	92.2	85.2	31.6	65.2	13.8	
HIGH SCHOOL: 1 TO 3 YEARS	65.8	53.6	47.5	69.2	90.2	93.8	92.7	89.4	40.2	65.7	15.5	
4 YEARS	84.7	73.0	(²)	73.7	94.6	96.8	96.6	93.2	53.0	73.8	21.2	
COLLEGE: 1 TO 3 YEARS	82.3	58.3	(²)	57.9	71.5	95.3	96.9	93.8	56.1	76.9	26.0	
4 YEARS	89.7	(²)	(²)	(²)	89.1	97.5	98.8	98.5	61.4	84.1	24.4	
5 YEARS OR MORE	89.9	(²)	(²)	(²)	69.8	94.7	98.5	97.9	66.2	85.3	41.3	
Women												
TOTAL	51.8	51.8	43.3	60.0	70.0	67.2	65.9	61.4	23.1	41.9	8.4	
ELEMENTARY: LESS THAN 5 YEARS ¹	15.6	(²)	(²)	(²)	(²)	31.6	41.2	25.6	8.0	21.8	2.8	
5 TO 7 YEARS	21.3	(²)	(²)	(²)	43.7	42.7	44.7	40.6	10.8	24.7	5.6	
8 YEARS	22.7	30.3	24.7	40.4	36.6	41.5	46.9	51.9	12.9	31.4	6.5	
HIGH SCHOOL: 1 TO 3 YEARS	40.7	45.6	43.9	50.7	47.6	52.2	57.1	51.2	19.4	35.5	7.6	
4 YEARS	57.6	68.1	65.0	68.2	74.9	65.9	66.7	64.3	29.8	44.9	10.4	
COLLEGE: 1 TO 3 YEARS	61.1	53.9	(²)	53.8	69.3	71.0	71.7	65.6	30.9	50.4	12.1	
4 YEARS	65.3	(²)	(²)	(²)	88.9	75.7	66.3	69.3	27.4	47.8	9.0	
5 YEARS OR MORE	74.7	(²)	(²)	(²)	67.5	82.7	83.0	84.2	44.3	65.2	19.8	

See footnotes at end of table.

Table B-6. Continued—Labor force participation rates of the population 16 years old and over by age, sex, race, Hispanic origin, and years of school completed, March 1981

YEARS OF SCHOOL COMPLETED, RACE, HISPANIC ORIGIN, AND SEX	TOTAL 16 YEARS OLD AND OVER	PERCENT OF POPULATION IN LABOR FORCE											
		16 TO 19 YEARS					20				55 YEARS AND OVER		
		TOTAL	16 AND 17	18 AND 19	20 TO 24	25 TO 34	35 TO 44	45 TO 54	TOTAL	55 TO 64	65 AND OVER		
Black													
Men													
TOTAL	68.8	38.6	24.5	53.9	78.7	87.6	87.3	81.5	39.7	59.6	19.5		
ELEMENTARY: LESS THAN 5 YEARS ¹	32.2	(2)	(2)	(2)	(2)	(2)	(2)	59.7	24.5	43.7	16.0		
5 TO 7 YEARS	53.2	(2)	(2)	(2)	(2)	(2)	(2)	85.8	37.6	52.5	24.5		
8 YEARS	51.0	23.1	(2)	(2)	(2)	(2)	(2)	62.4	37.8	60.4	20.3		
HIGH SCHOOL: 1 TO 3 YEARS	60.8	35.0	26.2	50.8	74.4	84.4	86.6	82.6	44.7	61.0	14.7		
4 YEARS	83.5	62.0	(2)	62.6	89.8	90.9	90.0	88.3	50.1	69.2	15.8		
COLLEGE: 1 TO 3 YEARS	78.1	(2)	(2)	(2)	64.6	87.9	86.5	84.3	62.6	(2)	(2)		
4 YEARS	89.7	(2)	(2)	(2)	(2)	(2)	92.6	(2)	(2)	(2)	(2)		
5 YEARS OR MORE	86.4	(2)	(2)	(2)	(2)	86.1	(2)	(2)	(2)	(2)	(2)		
Women													
TOTAL	53.2	32.0	21.2	42.7	59.9	70.1	70.5	63.1	25.9	44.2	9.9		
ELEMENTARY: LESS THAN 5 YEARS ¹	14.0	(2)	(2)	(2)	(2)	(2)	(2)	(2)	10.2	24.9	4.6		
5 TO 7 YEARS	29.1	(2)	(2)	(2)	(2)	(2)	(2)	49.1	20.0	37.0	9.6		
8 YEARS	30.0	(2)	(2)	(2)	(2)	(2)	(2)	50.4	21.1	37.0	11.1		
HIGH SCHOOL: 1 TO 3 YEARS	40.9	24.5	21.4	31.0	41.6	50.0	56.0	54.5	35.2	47.7	15.0		
4 YEARS	67.4	53.5	(2)	53.5	67.1	76.0	75.5	70.7	38.8	53.1	11.7		
COLLEGE: 1 TO 3 YEARS	69.1	(2)	(2)	(2)	61.4	76.9	80.4	82.4	35.9	(2)	(2)		
4 YEARS	80.6	(2)	(2)	(2)	(2)	85.9	87.1	(2)	(2)	(2)	(2)		
5 YEARS OR MORE	83.8	(2)	(2)	(2)	(2)	93.8	(2)	(2)	(2)	(2)	(2)		
Hispanic origin													
Men													
TOTAL	80.6	56.9	42.6	70.6	88.4	94.7	92.6	89.5	47.1	70.3	19.4		
ELEMENTARY: LESS THAN 5 YEARS ¹	69.1	(2)	(2)	(2)	(2)	95.6	83.2	82.3	35.3	(2)	16.4		
5 TO 7 YEARS	79.4	(2)	(2)	(2)	(2)	97.1	90.3	85.1	39.4	59.2	(2)		
8 YEARS	75.4	(2)	(2)	(2)	(2)	93.2	(2)	(2)	(2)	(2)	(2)		
HIGH SCHOOL: 1 TO 3 YEARS	74.0	52.5	42.6	67.2	85.1	91.6	97.0	(2)	(2)	(2)	(2)		
4 YEARS	88.5	69.4	(2)	71.0	94.0	95.2	96.3	94.1	51.6	(2)	(2)		
COLLEGE: 1 TO 3 YEARS	86.8	(2)	(2)	(2)	77.0	92.9	97.4	(2)	(2)	(2)	(2)		
4 YEARS	94.2	(2)	(2)	(2)	(2)	96.5	(2)	(2)	(2)	(2)	(2)		
5 YEARS OR MORE	90.7	(2)	(2)	(2)	(2)	(2)	(2)	(2)	(2)	(2)	(2)		
Women													
TOTAL	47.5	36.4	26.0	47.3	56.1	55.1	55.1	52.6	22.2	34.1	5.8		
ELEMENTARY: LESS THAN 5 YEARS ¹	22.9	(2)	(2)	(2)	(2)	32.9	40.2	28.2	11.7	20.9	3.6		
5 TO 7 YEARS	39.3	(2)	(2)	(2)	(2)	48.5	45.3	45.1	17.5	28.7	(2)		
8 YEARS	37.2	(2)	(2)	(2)	(2)	40.5	(2)	(2)	26.0	(2)	(2)		
HIGH SCHOOL: 1 TO 3 YEARS	36.8	28.7	25.6	35.4	38.7	38.7	47.7	55.9	28.7	(2)	(2)		
4 YEARS	62.2	68.2	(2)	68.9	68.6	62.0	65.8	61.7	31.6	(2)	(2)		
COLLEGE: 1 TO 3 YEARS	69.1	(2)	(2)	(2)	67.4	70.8	69.5	(2)	(2)	(2)	(2)		
4 YEARS	66.9	(2)	(2)	(2)	(2)	(2)	(2)	(2)	(2)	(2)	(2)		
5 YEARS OR MORE	(2)	(2)	(2)	(2)	(2)	(2)	(2)	(2)	(2)	(2)	(2)		

¹ Includes persons reporting no school years completed.

² Percent not shown where base is less than 75,000.

Table B-7. Labor force status of the population 16 years old and over by race, sex, and years of school completed, March 1981

(Percent distribution)

YEARS OF SCHOOL COMPLETED	BOTH SEXES				MEN				WOMEN			
	WHITE		BLACK		WHITE		BLACK		WHITE		BLACK	
	LABOR FORCE	NOT IN LABOR FORCE	LABOR FORCE	NOT IN LABOR FORCE	LABOR FORCE	NOT IN LABOR FORCE	LABOR FORCE	NOT IN LABOR FORCE	LABOR FORCE	NOT IN LABOR FORCE	LABOR FORCE	NOT IN LABOR FORCE
TOTAL: NUMBER (THOUSANDS)	94,303	53,068	10,894	7,211	54,328	15,825	5,549	2,517	39,975	37,242	5,346	4,694
PERCENT	100.0	100.0	100.0	100.0	100.0	100.0	100.0	100.0	100.0	100.0	100.0	100.0
ELEMENTARY: LESS THAN 5 YEARS ¹	1.0	4.3	2.3	11.4	1.3	5.7	3.3	15.2	0.6	3.7	1.3	9.4
5 TO 7 YEARS	2.5	7.7	5.5	12.9	3.0	9.6	6.1	11.8	1.7	6.9	4.9	13.5
8 YEARS	3.9	11.9	4.0	9.0	4.6	14.0	4.8	10.1	3.0	11.0	3.2	8.4
HIGH SCHOOL: 1 TO 3 YEARS	14.1	22.6	22.4	34.0	14.6	26.1	24.1	34.3	13.5	21.1	20.6	33.9
4 YEARS	41.3	32.6	39.6	20.7	37.7	23.4	37.7	16.4	46.3	36.6	41.6	22.9
COLLEGE: 1 TO 3 YEARS	18.0	12.8	16.9	9.4	17.5	12.9	16.0	9.9	18.7	12.8	17.9	9.1
4 YEARS	11.1	5.5	6.2	1.8	11.8	4.6	5.3	1.4	10.2	5.8	7.2	2.0
5 YEARS OR MORE	8.0	2.6	3.1	0.8	9.5	3.7	2.8	1.0	5.9	2.2	3.4	0.7

¹ Includes persons reporting no school years completed.

Table B-8. Labor force status of women 16 years old and over by age, marital status, and years of school completed, March 1981

LABOR FORCE STATUS, MARITAL STATUS, AND AGE	PERCENT DISTRIBUTION BY YEARS OF SCHOOL COMPLETED								MEDIAN SCHOOL YEARS COM- PLETED
	TOTAL (THOU- SANDS)	TOTAL	ELEMENTARY		HIGH SCHOOL		COLLEGE		
			LESS THAN 8 YEARS ¹	8	1 TO 3	4	1 TO 3	4 OR MORE	
Labor force									
Single									
TOTAL, 16 YEARS OLD AND OVER	11,628	100.0	1.3	1.5	20.7	38.4	21.2	17.0	12.7
16 TO 24 YEARS	7,665	100.0	0.6	1.0	28.0	40.1	22.2	8.2	12.5
25 TO 34 YEARS	2,593	100.0	1.3	0.6	5.3	34.3	21.6	36.9	14.2
35 TO 54 YEARS	982	100.0	5.2	4.1	7.2	36.7	15.1	31.6	12.9
55 YEARS AND OVER	388	100.0	5.0	9.6	13.8	36.4	14.3	20.9	12.6
Married, husband present									
TOTAL, 16 YEARS OLD AND OVER	25,460	100.0	2.8	3.0	10.8	49.1	17.7	16.6	12.7
16 TO 24 YEARS	2,973	100.0	1.4	1.4	13.0	56.1	20.3	7.8	12.6
25 TO 34 YEARS	7,955	100.0	1.3	1.3	7.9	45.6	21.4	22.5	12.9
35 TO 44 YEARS	6,279	100.0	2.7	2.5	10.8	48.7	16.7	18.6	12.7
45 TO 54 YEARS	5,019	100.0	3.5	4.6	13.0	51.7	14.1	13.1	12.6
55 TO 64 YEARS	2,833	100.0	5.8	6.3	13.1	49.5	13.8	11.4	12.5
65 YEARS AND OVER	402	100.0	11.2	13.8	10.4	39.6	14.6	10.2	12.4
Other marital status²									
TOTAL, 16 YEARS OLD AND OVER	9,327	100.0	5.4	5.0	15.3	44.4	18.0	11.9	12.5
16 TO 24 YEARS	623	100.0	1.1	2.0	23.8	53.6	16.8	2.7	12.4
25 TO 34 YEARS	2,398	100.0	1.8	1.4	10.4	46.8	25.5	14.2	12.8
35 TO 44 YEARS	2,049	100.0	3.6	2.3	14.5	44.8	19.3	15.5	12.7
45 TO 54 YEARS	1,763	100.0	6.3	5.8	16.6	44.7	13.4	13.2	12.5
55 TO 64 YEARS	1,764	100.0	9.3	7.9	17.0	43.2	13.6	8.9	12.4
65 YEARS AND OVER	729	100.0	14.4	17.5	19.2	29.3	12.7	6.9	11.8
Not in labor force									
Single									
TOTAL, 16 YEARS OLD AND OVER	7,046	100.0	6.7	5.4	45.3	21.6	16.2	4.6	11.5
16 TO 24 YEARS	5,276	100.0	2.2	4.1	54.5	19.0	18.1	2.2	11.5
25 TO 34 YEARS	546	100.0	14.5	3.7	26.3	29.5	11.5	14.4	12.2
35 TO 54 YEARS	292	100.0	36.9	7.7	22.8	21.4	6.0	5.3	9.6
55 YEARS AND OVER	932	100.0	18.5	13.4	11.5	31.7	12.0	12.8	12.2
Married, husband present									
TOTAL, 16 YEARS OLD AND OVER	24,423	100.0	8.6	8.5	17.0	43.3	13.0	9.7	12.4
16 TO 24 YEARS	2,024	100.0	4.7	3.7	28.0	47.8	13.3	2.5	12.3
25 TO 34 YEARS	4,964	100.0	3.5	3.2	12.0	46.8	19.8	14.6	12.7
35 TO 44 YEARS	3,759	100.0	5.4	4.3	15.2	46.3	13.9	14.9	12.5
45 TO 54 YEARS	3,638	100.0	8.1	7.1	19.1	46.5	11.6	7.7	12.3
55 TO 64 YEARS	4,929	100.0	9.8	9.9	17.3	45.2	10.5	7.3	12.3
65 YEARS AND OVER	5,109	100.0	16.5	18.4	16.8	31.6	9.2	7.5	11.7
Other marital status²									
TOTAL, 16 YEARS OLD AND OVER	11,375	100.0	23.6	18.3	19.9	25.1	8.7	4.6	10.1
16 TO 24 YEARS	308	100.0	9.8	9.3	36.6	34.7	8.9	0.7	11.4
25 TO 34 YEARS	748	100.0	7.4	4.9	30.3	40.8	12.6	4.1	12.2
35 TO 44 YEARS	566	100.0	11.8	10.5	29.1	36.6	8.0	4.0	11.8
45 TO 54 YEARS	687	100.0	24.5	10.6	25.5	26.5	9.2	3.8	10.7
55 TO 64 YEARS	1,562	100.0	25.5	14.2	20.8	28.5	7.6	3.4	10.4
65 YEARS AND OVER	7,504	100.0	26.2	22.1	16.7	21.4	8.5	5.2	9.3

¹ Includes persons reporting no school years completed.

² Includes widowed, divorced, and separated women.

Table B-9. Labor force participation rates of women 16 years old and over by age, marital status, and years of school completed, March 1981

MARITAL STATUS AND AGE	PERCENT OF POPULATION IN LABOR FORCE BY YEARS OF SCHOOL COMPLETED						
	TOTAL	ELEMENTARY		HIGH SCHOOL		COLLEGE	
		LESS THAN 8 YEARS ¹	8	1 TO 3	4	1 TO 3	4 OR MORE
Single							
TOTAL, 16 YEARS OLD AND OVER . . .	62.3	23.6	31.2	43.0	74.6	68.3	85.8
16 TO 24 YEARS.	59.2	27.0	27.0	42.7	75.4	64.1	84.6
25 TO 34 YEARS.	82.6	30.0	(²)	48.9	84.6	89.9	92.4
35 TO 54 YEARS.	77.1	32.2	(²)	51.6	85.2	89.5	95.3
55 YEARS AND OVER	29.4	10.1	23.1	33.2	32.3	33.2	40.4
Married, husband present							
TOTAL, 16 YEARS OLD AND OVER. . .	51.0	25.0	26.8	40.0	54.2	58.7	64.1
16 TO 24 YEARS.	59.5	29.8	36.1	40.5	63.3	69.1	81.8
25 TO 34 YEARS.	61.6	37.5	38.3	51.4	61.0	63.4	71.1
35 TO 44 YEARS.	62.5	45.2	48.7	54.4	63.7	66.8	67.6
45 TO 54 YEARS.	58.0	37.5	47.4	48.4	60.5	62.6	70.3
55 TO 64 YEARS.	36.5	25.4	26.8	30.4	38.6	43.2	47.4
65 YEARS AND OVER	7.3	5.1	5.6	4.7	9.0	11.2	9.7
Other marital status³							
TOTAL, 16 YEARS OLD AND OVER. . .	45.1	15.8	18.2	38.7	59.2	63.0	68.1
16 TO 24 YEARS.	66.9	(²)	(²)	56.7	75.7	79.3	(²)
25 TO 34 YEARS.	76.2	43.8	(²)	52.3	78.6	86.6	91.8
35 TO 44 YEARS.	78.4	52.3	44.1	64.4	81.6	89.8	93.3
45 TO 54 YEARS.	72.0	39.7	58.6	62.6	81.3	78.9	89.9
55 TO 64 YEARS.	53.0	29.1	38.7	48.0	63.2	67.0	74.7
65 YEARS AND OVER	8.9	5.1	7.1	10.0	11.8	12.7	11.5

¹ Includes persons reporting no school years completed.
² Rate not shown where base is less than 75,000.

³ Includes widowed, divorced, and separated women.

Table B-10. Occupation of employed persons 16 years old and over by sex and years of school completed, March 1981

Sex and occupation	TOTAL EMPLOYED (THOUSANDS)	PERCENT DISTRIBUTION BY YEARS OF SCHOOL COMPLETED									MEDIAN SCHOOL YEARS COMPLETED
		TOTAL	ELEMENTARY			HIGH SCHOOL		COLLEGE			
			LESS THAN 5 YEARS ¹	5 TO 7	8	1 TO 3	4	1 TO 3	4	5 OR MORE	
Both sexes											
ALL OCCUPATIONAL GROUPS	99,234	100.0	1.1	2.7	3.7	13.7	40.8	18.5	11.3	8.1	12.7
PROFESSIONAL, TECHNICAL, AND KINDRED WORKERS	16,417	100.0	0.1	0.1	0.4	1.7	14.4	19.5	30.0	33.9	16.5
MANAGERS AND ADMINISTRATORS, EXCEPT FARM	11,697	100.0	0.2	1.0	2.2	6.0	34.6	23.4	21.0	11.7	13.7
SALES WORKERS	6,268	100.0	0.3	0.8	1.6	12.0	39.0	24.4	16.5	5.5	12.9
CLERICAL AND KINDRED WORKERS	18,543	100.0	0.1	0.4	1.1	8.9	55.8	24.4	7.5	1.8	12.7
CRAFT AND KINDRED WORKERS	12,495	100.0	1.0	3.9	5.4	16.5	52.0	16.1	4.0	1.1	12.4
OPERATIVES, EXCEPT TRANSPORT	10,226	100.0	3.0	6.5	8.0	23.4	48.1	8.7	1.9	0.4	12.2
TRANSPORT EQUIPMENT OPERATIVES	3,333	100.0	1.8	4.3	6.8	24.2	48.8	11.8	1.8	0.4	12.3
LABORERS, EXCEPT FARM	4,117	100.0	3.8	6.3	6.7	26.7	40.6	13.2	2.4	0.3	12.2
PRIVATE HOUSEHOLD WORKERS	1,134	100.0	5.2	11.5	8.3	33.5	32.7	6.8	1.3	0.6	11.3
SERVICE WORKERS, EXCEPT PRIVATE HOUSEHOLD	12,620	100.0	1.5	4.3	5.6	23.9	42.3	17.4	3.4	1.4	12.3
FARM WORKERS	2,383	100.0	6.6	8.0	11.9	18.6	37.9	9.3	5.8	1.9	12.1
Men											
ALL OCCUPATIONAL GROUPS	56,349	100.0	1.4	3.2	4.4	14.2	37.2	17.9	12.0	9.7	12.7
PROFESSIONAL, TECHNICAL, AND KINDRED WORKERS	9,061	100.0	0.1	0.1	0.4	1.5	13.2	17.4	27.6	39.7	16.6
ENGINEERS	1,487	100.0	-	-	0.4	0.8	12.0	16.8	43.9	26.0	16.5
MEDICAL AND OTHER HEALTH WORKERS	993	100.0	0.2	-	-	1.2	7.6	12.3	12.2	66.6	18.2
PHYSICIANS, DENTISTS AND RELATED PRACTITIONERS	690	100.0	-	-	-	-	0.7	1.3	8.6	89.3	18.4
HEALTH WORKERS, EXCEPT PRACTITIONERS	303	100.0	0.5	-	-	3.8	23.3	37.2	20.4	14.8	14.7
TEACHERS, EXCEPT COLLEGE	935	100.0	0.1	-	0.3	1.1	4.5	4.7	32.0	57.2	17.4
ENGINEERING AND SCIENCE TECHNICIANS	932	100.0	-	0.3	0.8	2.1	39.1	39.1	12.8	5.9	13.6
OTHER PROFESSIONAL, TECHNICAL, AND KINDRED WORKERS	4,714	100.0	0.2	0.2	0.4	1.7	11.3	16.9	27.8	41.5	16.7
MANAGERS AND ADMINISTRATORS, EXCEPT FARM	8,506	100.0	0.2	1.2	2.4	5.9	31.3	22.6	23.4	13.1	14.1
SALARIED WORKERS	7,058	100.0	0.1	0.6	1.5	4.9	29.8	23.0	25.3	14.8	14.5
SELF-EMPLOYED WORKERS IN RETAIL TRADE	531	100.0	0.7	4.6	7.0	9.4	42.6	19.1	14.5	1.9	12.7
SELF-EMPLOYED WORKERS, EXCEPT RETAIL TRADE	917	100.0	0.7	4.2	6.5	10.9	36.0	21.8	13.6	6.2	12.8
SALES WORKERS	3,434	100.0	0.3	0.5	0.9	8.6	32.2	26.4	22.9	8.1	13.8
RETAIL TRADE	1,136	100.0	0.9	1.1	1.9	16.5	42.6	24.2	9.8	3.1	12.7
OTHER SALES WORKERS	2,298	100.0	0.1	0.3	0.4	4.7	27.1	27.5	29.4	10.5	14.6
CLERICAL AND KINDRED WORKERS	3,539	100.0	0.4	1.0	2.1	11.7	41.0	28.3	11.5	3.9	12.8
BOOKKEEPERS	155	100.0	2.4	0.7	3.4	4.5	42.2	28.6	15.8	2.4	12.9
OFFICE MACHINE OPERATORS	246	100.0	-	-	-	7.4	44.5	34.9	10.7	2.5	13.0
STENOGRAPHERS, TYPISTS, AND SECRETARIES	89	100.0	1.5	-	1.7	5.7	37.7	31.1	14.0	8.3	13.4
OTHER CLERICAL WORKERS	3,049	100.0	0.3	1.2	2.2	12.6	40.8	27.7	11.3	3.9	12.8
CRAFT AND KINDRED WORKERS	11,736	100.0	1.1	3.8	5.5	16.5	51.9	16.2	3.9	1.0	12.4
CARPENTERS	1,038	100.0	2.0	4.7	6.5	14.7	52.5	13.8	4.9	0.8	12.4
OTHER CONSTRUCTION CRAFTWORKERS	2,478	100.0	1.7	5.1	6.4	18.9	48.7	15.8	2.8	0.7	12.4
BLUE-COLLAR WORKER SUPERVISORS, NOT ELSEWHERE CLASSIFIED	1,628	100.0	0.8	3.2	4.4	17.2	45.3	19.0	7.5	2.6	12.5
METAL CRAFT WORKERS	1,275	100.0	0.5	2.2	6.1	15.4	58.6	14.8	2.2	0.3	12.4
MACHINISTS AND JOB-SETTERS	665	100.0	0.7	2.0	5.3	14.9	60.6	13.7	2.7	0.1	12.4
METAL CRAFT WORKERS EXCEPT MECHANICS, MACHINISTS, AND JOB-SETTERS	610	100.0	0.2	2.5	6.9	16.1	56.4	15.9	1.6	0.4	12.4
MECHANICS AND REPAIRERS	3,374	100.0	0.9	3.6	5.6	16.9	53.9	15.3	2.9	0.9	12.4
MECHANICS, AUTOMOBILE	1,264	100.0	1.1	5.3	7.2	20.7	53.2	10.7	1.6	0.3	12.3
MECHANICS, EXCEPT AUTOMOBILE	2,111	100.0	0.7	2.6	4.7	14.7	54.4	18.1	3.6	1.2	12.5
ALL OTHER	1,943	100.0	0.9	3.6	4.2	13.9	53.4	18.4	4.5	1.1	12.5
OPERATIVES, EXCEPT TRANSPORT	6,198	100.0	2.7	6.1	7.7	21.9	47.8	11.3	2.0	0.5	12.2
MINE WORKERS	351	100.0	3.4	4.4	9.0	20.1	47.2	14.1	1.4	0.3	12.3
DURABLE GOODS MANUFACTURING	3,031	100.0	2.4	6.4	7.3	20.3	50.5	10.9	1.7	0.5	12.3
NONDURABLE GOODS MANUFACTURING	1,344	100.0	2.9	7.4	9.0	21.7	46.2	9.5	3.0	0.4	12.2
ALL OTHER	1,472	100.0	3.0	4.6	7.0	26.0	43.7	13.4	1.9	0.5	12.2
TRANSPORT EQUIPMENT OPERATIVES	3,042	100.0	2.0	4.6	7.3	24.4	47.4	11.9	1.8	0.4	12.2
DRIVERS AND DELIVERY WORKERS	2,601	100.0	2.0	4.7	7.4	24.8	47.1	11.6	2.0	0.4	12.2
ALL OTHER	441	100.0	2.0	4.5	6.8	22.4	49.5	13.8	0.8	0.3	12.3
LABORERS, EXCEPT FARM	3,631	100.0	4.1	6.5	7.0	26.9	39.6	13.2	2.3	0.3	12.1
PRIVATE HOUSEHOLD WORKERS	49	(2)	(2)	(2)	(2)	(2)	(2)	(2)	(2)	(2)	(2)
SERVICE WORKERS, EXCEPT PRIVATE HOUSEHOLD	5,149	100.0	2.0	4.6	6.1	23.9	36.2	20.2	4.6	2.3	12.4
CLEANING SERVICE	1,592	100.0	2.3	7.6	10.6	28.8	36.1	11.2	2.2	1.0	12.0
FOOD SERVICE	1,587	100.0	2.9	4.7	4.3	34.4	30.0	19.2	3.4	1.1	12.1
HEALTH SERVICE	232	100.0	0.7	1.5	2.4	11.2	41.6	31.9	4.3	6.4	12.8
PERSONAL SERVICE	398	100.0	2.4	3.6	6.5	19.6	42.1	17.7	6.4	1.8	12.4
PROTECTIVE SERVICE	1,339	100.0	0.6	2.0	3.5	9.2	41.0	30.9	8.4	4.5	12.8
FARM WORKERS	2,005	100.0	7.4	8.7	12.0	18.2	37.1	9.1	5.5	2.0	12.1
FARMERS AND FARM MANAGERS	1,234	100.0	2.8	7.0	13.7	12.2	43.5	10.5	7.3	2.9	12.3
FARM LABORERS AND SUPERVISORS	770	100.0	14.8	11.5	9.4	27.9	26.8	6.7	2.5	0.5	10.7

See footnotes at end of table.

Table B-10. Continued—Occupation of employed persons 16 years old and over, by sex and years of school completed, March 1981

Sex and occupation	TOTAL EM- PLOYED (THOU- SANDS)	PERCENT DISTRIBUTION BY YEARS OF SCHOOL COMPLETED									MEDIAN SCHOOL YEARS COM- PLETED
		TOTAL	ELEMENTARY			HIGH SCHOOL		COLLEGE			
			LESS THAN 5 YEARS ¹	5 TO 7	8	1 TO 3	4	1 TO 3	4	5 OR MORE	
Women											
ALL OCCUPATIONAL GROUPS	42,885	100.0	0.8	2.0	2.8	13.1	45.6	19.2	10.5	6.1	12.7
PROFESSIONAL, TECHNICAL, AND KINDRED WORKERS	7,356	100.0	-	0.1	0.4	1.9	15.9	22.0	32.8	26.8	16.3
MEDICAL AND OTHER HEALTH WORKERS	2,067	100.0	0.1	0.2	0.3	1.8	20.5	40.3	24.8	11.8	15.2
PHYSICIANS, DENTISTS AND RELATED PRACTITIONERS	94	100.0	-	-	-	0.7	4.1	8.2	13.5	73.6	(8)
HEALTH WORKERS, EXCEPT PRACTITIONERS	1,972	100.0	0.1	0.3	0.3	1.9	21.3	41.9	25.4	8.8	15.1
TEACHERS, EXCEPT COLLEGE	2,367	100.0	-	0.1	0.2	1.1	5.8	6.6	46.7	39.4	16.8
ENGINEERING AND SCIENCE TECHNICIANS	223	100.0	-	-	-	6.2	39.4	35.1	15.7	3.6	13.4
OTHER PROFESSIONAL, TECHNICAL, AND KINDRED WORKERS	2,699	100.0	-	-	0.6	2.3	19.4	20.3	28.2	29.1	16.3
MANAGERS AND ADMINISTRATORS, EXCEPT FARM	3,191	100.0	0.1	0.3	1.5	6.6	43.4	25.3	14.7	8.2	13.0
SALARIED WORKERS	2,747	100.0	0.1	0.2	0.9	5.8	43.5	26.0	15.3	8.2	13.0
SELF-EMPLOYED WORKERS	444	100.0	0.6	0.9	4.8	11.2	42.7	20.8	10.9	8.1	12.8
SALES WORKERS	2,834	100.0	0.2	1.1	2.4	16.0	47.3	21.9	8.7	2.4	12.6
RETAIL TRADE	2,025	100.0	0.3	1.4	3.1	19.4	50.5	19.0	4.9	1.4	12.5
OTHER SALES WORKERS	809	100.0	0.2	0.4	0.5	7.7	39.0	29.2	18.1	5.0	13.2
CLERICAL AND KINDRED WORKERS	15,005	100.0	0.1	0.3	0.8	8.2	59.3	23.5	6.5	1.3	12.7
BOOKKEEPERS	1,707	100.0	-	0.1	0.9	5.8	62.4	22.1	7.6	1.2	12.7
OFFICE MACHINE OPERATORS	726	100.0	-	-	0.5	6.7	65.8	22.2	4.3	0.5	12.7
STENOGRAPHERS, TYPISTS, AND SECRETARIES	5,010	100.0	-	0.1	0.3	3.9	60.1	27.3	7.0	1.4	12.8
OTHER CLERICAL WORKERS	7,562	100.0	0.1	0.4	1.3	11.7	57.5	21.5	6.1	1.4	12.6
CRAFT AND KINDRED WORKERS	760	100.0	0.4	5.0	4.4	16.3	52.5	13.6	6.6	1.1	12.5
OPERATIVES, EXCEPT TRANSPORT	4,027	100.0	3.4	7.1	8.6	25.7	48.5	4.7	1.7	0.3	12.1
DURABLE GOODS MANUFACTURING	1,567	100.0	2.5	4.3	7.5	25.9	54.0	4.4	1.3	0.1	12.2
NONDURABLE GOODS MANUFACTURING	1,846	100.0	3.9	9.5	10.0	27.4	43.8	3.4	1.6	0.4	11.9
ALL OTHER	614	100.0	4.2	6.9	6.8	20.3	48.5	9.6	3.3	0.3	12.2
TRANSPORT EQUIPMENT OPERATIVES	291	100.0	-	1.0	1.8	22.2	62.5	10.2	1.6	0.6	12.4
LABORERS, EXCEPT FARM	487	100.0	1.4	4.1	4.9	25.1	47.6	13.0	3.0	0.9	12.3
PRIVATE HOUSEHOLD WORKERS	1,085	100.0	5.4	11.3	8.5	33.3	32.9	6.5	1.4	0.6	11.2
SERVICE WORKERS, EXCEPT PRIVATE HOUSEHOLD	7,471	100.0	1.2	4.1	5.3	24.0	46.5	15.5	2.7	0.8	12.3
CLEANING SERVICE	974	100.0	3.4	10.7	11.4	31.4	35.8	6.5	0.6	0.2	11.4
FOOD SERVICE	3,087	100.0	1.0	3.7	5.2	30.6	42.9	13.3	2.9	0.4	12.2
HEALTH SERVICE	1,853	100.0	0.5	2.7	3.6	15.4	51.4	23.3	2.1	1.0	12.5
PERSONAL SERVICE	1,418	100.0	1.2	2.6	4.2	16.5	53.7	16.4	3.8	1.5	12.5
PROTECTIVE SERVICE	140	100.0	-	-	-	16.0	62.0	14.1	6.7	1.2	12.5
FARM WORKERS	378	100.0	2.4	3.8	11.4	20.5	42.2	10.6	7.3	1.9	12.3

¹ Includes persons reporting no school years completed.

² Percent and median not shown where base is less than 75,000.

NOTE: Dash indicates less than 0.05 percent.

Table B-11. Occupation group of employed persons 16 years old and over by sex, race, Hispanic origin, and years of school completed, March 1981

Sex, race, Hispanic origin, and major occupational group	TOTAL EMPLOYED (THOUSANDS)	PERCENT DISTRIBUTION BY YEARS OF SCHOOL COMPLETED						MEDIAN SCHOOL YEARS COMPLETED	
		TOTAL	ELEMENTARY		HIGH SCHOOL		COLLEGE		
			LESS THAN 8 YEARS ¹	8	1 TO 3	4	1 TO 3		4 OR MORE
Men									
White									
ALL OCCUPATIONAL GROUPS.	50,373	100.0	4.1	4.5	13.6	37.4	18.0	22.5	12.7
PROFESSIONAL, TECHNICAL, AND KINDRED WORKERS.	8,340	100.0	0.2	0.4	1.4	13.0	17.1	67.9	16.6
MANAGERS AND ADMINISTRATORS, EXCEPT FARM.	8,054	100.0	1.3	2.4	5.8	31.6	22.7	36.2	14.1
SALES WORKERS.	3,285	100.0	0.9	1.0	8.6	32.1	26.5	31.0	13.8
CLERICAL AND KINDRED WORKERS.	3,043	100.0	1.4	2.1	12.2	41.3	27.0	16.1	12.8
CRAFT AND KINDRED WORKERS.	10,725	100.0	4.5	5.6	16.2	52.5	16.3	4.8	12.5
OPERATIVES, EXCEPT TRANSPORT.	5,346	100.0	8.8	8.0	21.6	48.2	11.2	2.3	12.2
TRANSPORT EQUIPMENT OPERATIVES.	2,553	100.0	6.0	7.3	23.8	48.7	11.9	2.3	12.3
LABORERS, EXCEPT FARM.	3,016	100.0	8.6	7.3	26.7	40.9	13.8	2.7	12.2
SERVICE WORKERS, INCLUDING PRIVATE HOUSEHOLD.	4,158	100.0	6.2	6.3	23.1	35.7	21.1	7.7	12.4
FARM WORKERS.	1,855	100.0	13.4	12.6	17.9	38.6	9.5	8.0	12.2
Black									
ALL OCCUPATIONAL GROUPS.	4,651	100.0	9.9	4.6	21.9	37.6	16.7	9.3	12.4
PROFESSIONAL, TECHNICAL, AND KINDRED WORKERS.	399	100.0	1.6	0.4	3.3	20.2	27.9	46.7	15.6
MANAGERS AND ADMINISTRATORS, EXCEPT FARM.	299	100.0	4.3	2.5	7.5	29.1	21.6	34.9	13.8
SALES AND CLERICAL WORKERS.	480	100.0	1.4	1.5	10.2	41.6	33.1	12.2	12.9
CRAFT AND KINDRED WORKERS.	811	100.0	8.7	4.5	22.9	44.4	15.0	4.5	12.3
OPERATIVES, EXCEPT TRANSPORT.	717	100.0	9.5	6.8	24.4	44.7	12.2	2.5	12.2
TRANSPORT EQUIPMENT OPERATIVES.	457	100.0	10.4	7.4	28.8	40.3	11.9	1.2	12.1
LABORERS, EXCEPT FARM.	533	100.0	21.6	5.6	29.4	34.2	8.0	1.2	11.4
SERVICE WORKERS, INCLUDING PRIVATE HOUSEHOLD.	845	100.0	8.9	5.1	30.7	37.2	16.0	2.1	12.1
FARM WORKERS.	110	100.0	52.0	6.0	23.6	18.4	-	-	7.7
Hispanic origin									
ALL OCCUPATIONAL GROUPS.	3,047	100.0	24.3	7.9	19.4	26.9	12.7	8.8	11.8
PROFESSIONAL, TECHNICAL, AND KINDRED WORKERS.	258	100.0	2.9	1.0	4.2	15.5	19.5	56.9	16.2
MANAGERS AND ADMINISTRATORS, EXCEPT FARM.	250	100.0	8.3	7.5	9.5	32.9	20.4	21.4	12.8
SALES AND CLERICAL WORKERS.	270	100.0	4.5	3.3	19.3	37.2	29.0	6.7	12.6
CRAFT AND KINDRED WORKERS.	576	100.0	21.6	7.9	22.0	32.8	12.0	3.8	11.8
OPERATIVES, EXCEPT TRANSPORT.	596	100.0	35.6	9.7	22.0	24.0	7.3	1.5	9.7
TRANSPORT EQUIPMENT OPERATIVES.	204	100.0	24.7	6.7	23.2	31.8	12.4	1.2	11.4
LABORERS, EXCEPT FARM.	333	100.0	30.4	12.5	27.8	22.4	5.5	1.5	10.1
SERVICE WORKERS, INCLUDING PRIVATE HOUSEHOLD.	413	100.0	27.7	9.5	21.6	26.5	12.3	2.4	10.8
FARM WORKERS.	148	100.0	65.2	7.9	12.7	10.8	1.4	2.0	6.3

See footnotes at end of table.

Table B-11. Continued—Occupation group of employed persons 16 years old and over by sex, race, Hispanic origin, and years of school completed, March 1981

Sex, race, Hispanic origin, and major occupational group	TOTAL EMPLOYED (THOUSANDS)	PERCENT DISTRIBUTION BY YEARS OF SCHOOL COMPLETED							MEDIAN SCHOOL YEARS COMPLETED
		TOTAL	ELEMENTARY		HIGH SCHOOL		COLLEGE		
			LESS THAN 8 YEARS ¹	8	1 TO 3	4	1 TO 3	4 OR MORE	
Women									
White									
ALL OCCUPATIONAL GROUPS.	37,370	100.0	2.2	2.8	12.6	46.4	19.2	16.8	12.7
PROFESSIONAL, TECHNICAL, AND KINDRED WORKERS.	6,531	100.0	0.1	0.4	1.8	15.6	22.1	59.9	16.3
MANAGERS AND ADMINISTRATORS, EXCEPT FARM.	2,966	100.0	0.4	1.5	6.3	44.3	25.0	22.5	12.9
SALES WORKERS.	2,644	100.0	1.3	2.4	16.0	47.5	21.8	11.0	12.6
CLERICAL AND KINDRED WORKERS.	13,325	100.0	0.3	0.9	8.1	60.7	22.6	7.4	12.7
CRAFT WORKERS, OPERATIVES, AND LABORERS, EXCEPT FARM.	4,723	100.0	8.6	8.1	24.4	48.9	7.0	3.0	12.2
PRIVATE HOUSEHOLD WORKERS.	736	100.0	10.7	7.3	33.0	38.0	8.8	2.1	11.9
SERVICE WORKERS, EXCEPT PRIVATE HOUSEHOLD.	6,094	100.0	3.8	5.3	23.4	47.8	16.0	3.7	12.4
FARM WORKERS.	351	100.0	5.2	12.1	18.4	43.3	11.1	9.7	12.3
Black									
ALL OCCUPATIONAL GROUPS.	4,507	100.0	6.8	3.1	18.2	41.2	18.8	12.0	12.5
PROFESSIONAL, TECHNICAL, AND KINDRED WORKERS.	645	100.0	0.3	0.8	3.2	20.7	22.1	52.9	16.1
MANAGERS AND ADMINISTRATORS, EXCEPT FARM.	155	100.0	0.5	0.6	12.9	30.2	27.1	28.6	13.7
SALES WORKERS.	134	100.0	2.3	2.2	18.1	48.7	20.7	8.0	12.6
CLERICAL AND KINDRED WORKERS.	1,379	100.0	0.2	0.8	9.6	49.1	31.5	8.9	12.8
CRAFT WORKERS, OPERATIVES, AND LABORERS, EXCEPT FARM.	657	100.0	8.4	2.8	25.5	55.0	6.8	1.4	12.2
PRIVATE HOUSEHOLD WORKERS.	330	100.0	30.9	11.3	33.6	21.6	1.5	1.1	9.5
SERVICE WORKERS, EXCEPT PRIVATE HOUSEHOLD.	1,194	100.0	11.8	5.3	28.2	41.5	12.5	0.8	12.1
FARM WORKERS.	11	(2)	(2)	(2)	(2)	(2)	(2)	(2)	(2)
Hispanic origin									
ALL OCCUPATIONAL GROUPS.	940	100.0	17.0	5.5	15.8	37.9	16.3	7.5	12.3
PROFESSIONAL, TECHNICAL, AND KINDRED WORKERS.	185	100.0	0.2	0.8	3.4	20.7	32.0	42.9	15.4
MANAGERS AND ADMINISTRATORS, EXCEPT FARM.	86	100.0	3.7	1.9	7.2	40.3	26.8	20.0	12.9
SALES WORKERS.	99	100.0	7.2	4.2	21.6	40.7	21.9	4.3	12.4
CLERICAL AND KINDRED WORKERS.	649	100.0	2.0	2.0	11.5	55.3	24.7	4.5	12.6
CRAFT WORKERS, OPERATIVES, AND LABORERS, EXCEPT FARM.	485	100.0	35.9	8.7	22.7	26.3	4.7	1.7	9.7
PRIVATE HOUSEHOLD WORKERS.	66	(2)	(2)	(2)	(2)	(2)	(2)	(2)	8.0
SERVICE WORKERS, EXCEPT PRIVATE HOUSEHOLD.	353	100.0	25.5	9.3	20.9	35.3	7.4	1.7	11.2
FARM WORKERS.	16	(2)	(2)	(2)	(2)	(2)	(2)	(2)	(2)

¹ Includes persons reporting no school years completed.

² Percent and median not shown where base is less than 75,000.

NOTE: Dash indicates less than 0.05 percent.

Table B-12. Unemployment rates of persons 16 years old and over by age, sex, and years of school completed, March 1981

Sex and years of school completed	TOTAL 16 YEARS OLD AND OVER	PERCENT OF LABOR FORCE UNEMPLOYED							
		16 AND 17	18 AND 19	20 TO 24	25 TO 34	35 TO 44	45 TO 54	55 TO 64	65 AND OVER
Both sexes									
TOTAL	7.9	23.4	18.5	12.7	7.5	5.5	4.3	4.2	3.1
ELEMENTARY: LESS THAN 5 YEARS ¹	10.5	(2)	(2)	(2)	8.8	11.4	13.0	8.9	10.0
5 TO 7 YEARS	11.6	(2)	(2)	33.6	13.8	13.9	7.8	7.1	2.6
8 YEARS	12.1	44.4	33.4	33.2	13.9	12.7	5.9	8.3	5.3
HIGH SCHOOL: 1 TO 3 YEARS	15.3	22.3	25.2	23.3	16.4	10.3	6.7	6.3	2.9
4 YEARS	8.1	16.5	16.0	13.7	9.0	5.7	3.7	3.5	2.7
COLLEGE: 1 TO 3 YEARS	5.1	(2)	7.3	7.0	5.9	3.3	3.6	2.6	1.8
4 YEARS OR MORE	2.4	(2)	(2)	5.6	2.6	2.1	1.9	1.4	1.0
Men									
TOTAL	8.1	23.8	19.9	14.5	7.6	5.6	4.2	4.0	2.8
ELEMENTARY: LESS THAN 5 YEARS ¹	11.0	(2)	(2)	(2)	10.5	9.1	13.0	10.2	13.2
5 TO 7 YEARS	11.6	(2)	(2)	30.1	11.5	16.0	7.4	7.0	3.5
8 YEARS	11.4	41.1	26.9	31.9	12.7	11.1	5.4	7.7	4.2
HIGH SCHOOL: 1 TO 3 YEARS	15.6	22.7	25.9	22.3	16.3	11.2	7.9	6.0	2.3
4 YEARS	8.8	(B)	16.6	16.0	9.5	6.0	3.8	3.6	1.5
COLLEGE: 1 TO 3 YEARS	5.2	(2)	10.6	7.7	6.1	3.3	2.9	2.0	2.4
4 YEARS OR MORE	2.1	(2)	(2)	6.2	2.4	1.8	1.3	1.1	0.5
Women									
TOTAL	7.6	23.0	17.0	10.5	7.3	5.4	4.3	4.4	3.5
ELEMENTARY: LESS THAN 5 YEARS ¹	9.1	(2)	(2)	(2)	(2)	16.2	13.0	6.3	(B)
5 TO 7 YEARS	11.4	(2)	(2)	(2)	19.2	9.8	8.6	7.1	1.2
8 YEARS	13.6	(2)	(2)	(2)	16.6	16.2	6.7	9.6	6.9
HIGH SCHOOL: 1 TO 3 YEARS	15.0	22.0	24.1	25.3	16.6	9.1	5.0	6.8	3.7
4 YEARS	7.4	(B)	15.4	11.1	8.5	5.4	3.5	3.4	4.1
COLLEGE: 1 TO 3 YEARS	5.0	(2)	4.3	6.4	5.6	3.3	4.7	3.4	1.0
4 YEARS OR MORE	3.0	(2)	(2)	5.0	2.9	2.5	3.3	1.9	2.6

¹ Includes persons reporting no school years completed.

² Percent not shown where base is less than 75,000.

Table B-13. Unemployment of persons 16 years old and over by age, race, Hispanic origin, and years of school completed, March 1981

YEARS OF SCHOOL COMPLETED	TOTAL 16 YEARS OLD AND OVER	WHITE					BLACK					
		16 TO 24	25 TO 34	35 TO 44	45 TO 54	55 AND OVER	TOTAL 16 YEARS OLD AND OVER	16 TO 24	25 TO 34	35 TO 44	45 TO 54	55 AND OVER
PERCENT DISTRIBUTION BY YEARS OF SCHOOL COMPLETED												
TOTAL: NUMBER (THOUSANDS)	6,560	2,870	1,680	896	596	518	1,737	808	518	224	113	74
PERCENT	100.0	100.0	100.0	100.0	100.0	100.0	100.0	100.0	100.0	100.0	100.0	(²)
ELEMENTARY: LESS THAN 5 YEARS ¹	1.4	0.2	0.8	2.7	5.2	4.1	1.7	0.2	0.6	-	6.7	(²)
5 TO 7 YEARS	4.4	3.1	2.9	7.3	7.8	7.5	3.2	0.8	1.8	6.1	10.1	(²)
8 YEARS	6.4	5.5	3.1	7.1	9.0	18.6	4.6	3.3	2.5	9.9	5.3	(²)
HIGH SCHOOL: 1 TO 3 YEARS	27.5	39.5	15.8	18.9	20.5	22.1	34.7	41.6	29.0	29.9	34.5	(²)
4 YEARS	42.6	40.7	50.9	42.6	36.5	33.0	40.9	42.2	43.2	44.9	24.9	(²)
COLLEGE: 1 YEAR OR MORE	17.6	11.0	26.5	21.4	20.9	14.7	14.9	11.9	23.0	9.3	18.5	(²)
PERCENT OF LABOR FORCE UNEMPLOYED												
TOTAL:	7.0	13.5	6.4	4.9	4.0	3.8	15.9	31.1	15.7	10.5	7.0	5.9
ELEMENTARY: LESS THAN 5 YEARS ¹	10.0	7.0	7.9	12.3	13.5	7.6	11.7	(²)	(²)	(²)	(²)	12.0
5 TO 7 YEARS	12.3	36.2	12.9	14.5	8.6	5.4	9.3	(²)	(²)	13.6	6.4	6.0
8 YEARS	11.3	35.0	12.5	10.8	5.7	7.2	18.5	(²)	(²)	25.0	5.0	10.3
HIGH SCHOOL: 1 TO 3 YEARS	13.5	20.3	13.3	9.0	6.3	6.0	24.7	44.2	29.1	14.7	9.3	3.3
4 YEARS	7.2	12.6	8.1	5.1	3.4	3.2	16.4	28.8	15.5	11.0	5.8	5.9
COLLEGE: 1 YEAR OR MORE	3.3	5.7	3.5	2.5	2.5	1.8	9.1	16.3	9.7	3.9	6.1	1.7
HISPANIC ORIGIN												
TOTAL 16 YEARS OLD AND OVER		16 TO 24	25 TO 34	35 TO 44	45 TO 54	55 AND OVER						
PERCENT DISTRIBUTION BY YEARS OF SCHOOL COMPLETED												
TOTAL: NUMBER (THOUSANDS)	630	283	160	92	62	32						
PERCENT	100.0	100.0	100.0	100.0	(²)	(²)						
ELEMENTARY: LESS THAN 5 YEARS ¹	8.5	1.8	6.9	14.3	(²)	(²)						
5 TO 7 YEARS	15.4	10.1	19.0	19.8	(²)	(²)						
8 YEARS	10.8	10.6	9.5	13.6	(²)	(²)						
HIGH SCHOOL: 1 TO 3 YEARS	29.2	42.8	22.1	14.5	(²)	(²)						
4 YEARS	26.5	28.4	29.0	26.2	(²)	(²)						
COLLEGE: 1 YEAR OR MORE	9.5	6.3	13.5	11.7	(²)	(²)						
PERCENT OF LABOR FORCE UNEMPLOYED												
TOTAL:	11.2	18.0	9.1	8.3	8.4	7.3						
ELEMENTARY: LESS THAN 5 YEARS ¹	11.1	(²)	8.9	12.6	15.7	9.9						
5 TO 7 YEARS	13.2	21.6	13.3	11.0	10.6	7.7						
8 YEARS	16.5	35.0	15.0	14.1	6.3	(²)						
HIGH SCHOOL: 1 TO 3 YEARS	17.0	23.8	14.7	7.9	8.4	(²)						
4 YEARS	9.7	15.0	8.0	6.8	8.0	3.2						
COLLEGE: 1 YEAR OR MORE	5.1	7.3	4.5	4.7	3.8	(²)						

¹ Includes persons reporting no school years completed.

² Percent not shown where base is less than 75,000.

Table B-14. Duration of unemployment of persons 16 years old and over by race, Hispanic origin, sex, and years of school completed, March 1981

Sex, race, Hispanic origin, and duration of unemployment	TOTAL UNEMPLOYED (THOUSANDS)	PERCENT DISTRIBUTION BY YEARS OF SCHOOL COMPLETED					MEDIAN SCHOOL YEARS COMPLETED	
		TOTAL	ELEMENTARY		HIGH SCHOOL			COLLEGE
			LESS THAN 8 YEARS ¹	8	1 TO 3	4		1 OR MORE
All persons, both sexes								
TOTAL UNEMPLOYED.	8,487	100.0	5.7	6.0	29.0	42.1	17.2	12.2
1 TO 4 WEEKS.	3,011	100.0	5.4	5.9	32.6	39.1	17.0	12.2
5 TO 14 WEEKS.	2,797	100.0	4.9	5.5	29.5	42.0	18.0	12.2
15 TO 26 WEEKS.	1,334	100.0	7.0	7.9	24.6	44.5	16.1	12.2
27 WEEKS OR MORE.	1,344	100.0	6.7	5.6	24.2	46.6	16.9	12.3
Men								
TOTAL UNEMPLOYED.	4,958	100.0	6.8	6.5	29.7	40.7	16.3	12.2
1 TO 4 WEEKS.	1,493	100.0	7.1	6.9	34.1	36.9	14.9	12.1
5 TO 14 WEEKS.	1,642	100.0	5.6	5.2	31.4	40.8	17.0	12.2
15 TO 26 WEEKS.	891	100.0	8.1	7.6	23.6	43.4	17.3	12.2
27 WEEKS OR MORE.	931	100.0	7.2	7.1	25.4	43.9	16.4	12.2
Women								
TOTAL UNEMPLOYED.	3,529	100.0	4.1	5.4	28.0	44.1	18.4	12.3
1 TO 4 WEEKS.	1,518	100.0	3.6	5.0	31.1	41.2	19.1	12.3
5 TO 14 WEEKS.	1,155	100.0	4.0	5.9	26.7	43.9	19.5	12.3
15 TO 26 WEEKS.	443	100.0	4.8	8.4	26.6	46.7	13.5	12.2
27 WEEKS OR MORE.	412	100.0	5.6	2.2	21.5	52.7	18.1	12.4
White, both sexes								
TOTAL UNEMPLOYED.	6,560	100.0	5.8	6.4	27.5	42.6	17.6	12.2
1 TO 4 WEEKS.	2,341	100.0	5.5	6.3	31.4	39.2	17.6	12.2
5 TO 14 WEEKS.	2,202	100.0	5.3	5.9	28.0	43.0	17.8	12.3
15 TO 26 WEEKS.	1,054	100.0	7.4	8.3	21.7	45.2	17.4	12.3
27 WEEKS OR MORE.	964	100.0	6.2	6.0	23.4	47.0	17.3	12.3
Men								
TOTAL UNEMPLOYED.	3,955	100.0	6.7	6.7	28.3	41.4	16.9	12.2
1 TO 4 WEEKS.	1,219	100.0	7.3	7.0	33.0	37.5	15.2	12.1
5 TO 14 WEEKS.	1,333	100.0	5.8	5.6	29.7	41.7	17.2	12.2
15 TO 26 WEEKS.	716	100.0	7.9	7.3	21.2	44.6	19.0	12.3
27 WEEKS OR MORE.	687	100.0	6.2	7.6	24.5	44.7	17.0	12.3
Women								
TOTAL UNEMPLOYED.	2,605	100.0	4.5	6.0	26.5	44.3	18.7	12.3
1 TO 4 WEEKS.	1,122	100.0	3.5	5.5	29.7	41.1	20.2	12.3
5 TO 14 WEEKS.	869	100.0	4.5	6.3	25.4	45.1	18.8	12.3
15 TO 26 WEEKS.	338	100.0	6.4	10.4	23.0	46.3	14.0	12.2
27 WEEKS OR MORE.	277	100.0	6.0	2.1	20.8	53.0	18.2	12.4

See footnote at end of table.

Table B-14. Continued—Duration of unemployment of persons 16 years old and over by race, Hispanic origin, sex, and years of school completed, March 1981

Sex, race, Hispanic origin, and duration of unemployment	TOTAL UNEMPLOYED (THOUSANDS)	PERCENT DISTRIBUTION BY YEARS OF SCHOOL COMPLETED						MEDIAN SCHOOL YEARS COMPLETED
		TOTAL	ELEMENTARY		HIGH SCHOOL		COLLEGE	
			LESS THAN 8 YEARS ¹	8	1 TO 3	4	1 OR MORE	
Black, both sexes								
TOTAL UNEMPLOYED	1,737	100.0	4.9	4.6	34.7	40.9	14.9	12.1
1 TO 4 WEEKS	598	100.0	4.7	3.8	38.7	40.1	12.7	12.1
5 TO 14 WEEKS	533	100.0	3.6	4.5	34.9	38.7	18.4	12.2
15 WEEKS OR MORE	605	100.0	6.3	5.6	30.5	43.5	14.0	12.2
Men								
TOTAL UNEMPLOYED	898	100.0	6.7	5.6	35.4	37.9	14.3	12.1
1 TO 4 WEEKS	235	100.0	6.2	5.2	41.6	36.3	10.7	11.8
5 TO 14 WEEKS	279	100.0	4.9	3.5	37.7	36.3	17.6	12.1
15 WEEKS OR MORE	384	100.0	8.3	7.5	30.0	40.1	14.1	12.1
Women								
TOTAL UNEMPLOYED	839	100.0	3.0	3.6	33.8	44.0	15.6	12.2
1 TO 4 WEEKS	363	100.0	3.7	2.9	36.7	42.6	14.1	12.2
5 TO 14 WEEKS	254	100.0	2.1	5.6	31.7	41.4	19.2	12.3
15 WEEKS OR MORE	221	100.0	2.8	2.4	31.4	49.4	14.0	12.3
Hispanic origin, both sexes								
TOTAL UNEMPLOYED	630	100.0	23.9	10.8	29.2	26.5	9.5	10.6
1 TO 4 WEEKS	242	100.0	22.2	11.5	31.5	25.7	9.1	10.6
5 TO 14 WEEKS	224	100.0	19.8	9.4	32.8	28.7	9.3	11.0
15 WEEKS OR MORE	164	100.0	32.2	11.9	20.8	24.7	10.3	10.0
Men								
TOTAL UNEMPLOYED	382	100.0	24.1	9.6	30.8	25.2	10.4	10.7
1 TO 4 WEEKS	134	100.0	23.9	12.3	33.0	21.5	9.3	10.4
5 TO 14 WEEKS	136	100.0	18.3	7.5	35.1	29.3	9.8	11.1
15 WEEKS OR MORE	112	100.0	31.4	8.9	22.8	24.6	12.3	10.6
Women								
TOTAL UNEMPLOYED	248	100.0	23.7	12.8	26.7	28.6	8.2	10.5
1 TO 4 WEEKS	108	100.0	20.0	10.5	29.8	30.9	8.9	11.0
5 TO 14 WEEKS	88	100.0	22.1	12.4	29.2	27.8	8.6	10.7
15 WEEKS OR MORE	53	(2)	(2)	(2)	(2)	(2)	(2)	(2)

¹ Includes persons reporting no school years completed.

² Percent and median not shown where base is less than 75,000.

Table B-15. Industry of employed persons 16 years old and over by sex and years of school completed, March 1981

SEX AND INDUSTRY	TOTAL EMPLOYED (THOUSANDS)	PERCENT DISTRIBUTION BY YEARS OF SCHOOL COMPLETED						MEDIAN SCHOOL YEARS COMPLETED	
		TOTAL	ELEMENTARY		HIGH SCHOOL		COLLEGE		
			LESS THAN 8 YEARS ¹	8	1 TO 3	4	1 TO 3		4 OR MORE
Men									
TOTAL	56,349	100.0	4.6	4.4	14.2	37.2	17.9	21.7	12.7
AGRICULTURE	2,368	100.0	15.4	11.3	18.1	35.9	10.6	8.8	12.1
NONAGRICULTURAL INDUSTRIES	53,981	100.0	4.2	4.1	14.0	37.3	18.2	22.2	12.7
MINING	889	100.0	5.4	6.6	16.0	43.5	14.8	13.6	12.5
CONSTRUCTION	5,191	100.0	6.7	6.7	17.6	45.2	15.7	8.0	12.4
MANUFACTURING	14,928	100.0	5.4	5.1	15.1	43.0	15.8	15.7	12.6
DURABLE GOODS	9,828	100.0	5.3	5.1	14.3	43.8	16.4	15.1	12.6
ORDNANCE	209	100.0	2.0	2.9	3.4	32.1	20.9	38.6	14.2
LUMBER	550	100.0	15.0	8.8	20.8	37.5	10.7	7.2	12.1
FURNITURE	376	100.0	16.0	6.0	21.0	42.8	9.9	4.2	12.2
STONE	500	100.0	6.6	5.7	17.4	46.9	10.2	13.1	12.4
PRIMARY METALS	1,031	100.0	8.2	7.2	16.6	48.5	11.7	7.9	12.4
FABRICATED METALS	1,136	100.0	6.2	7.0	19.2	43.9	13.8	9.8	12.4
MACHINERY	2,271	100.0	3.4	3.6	12.2	45.7	19.3	15.8	12.7
ELECTRICAL EQUIPMENT	1,422	100.0	2.4	2.8	8.3	39.1	22.4	25.0	12.9
TRANSPORTATION EQUIPMENT	1,673	100.0	3.2	5.7	14.7	46.4	15.3	14.6	12.6
INSTRUMENTS	395	100.0	1.9	4.2	9.3	41.4	17.6	25.5	12.8
OTHER DURABLE GOODS	264	100.0	6.1	4.5	17.2	37.5	22.8	12.0	12.6
NONDURABLE GOODS	5,100	100.0	5.5	5.0	16.7	41.5	14.7	16.7	12.6
FOOD	1,264	100.0	6.7	6.4	18.4	45.7	13.0	9.9	12.4
TOBACCO	47	(2)	(2)	(2)	(2)	(2)	(2)	(2)	(2)
TEXTILES	355	100.0	12.3	9.9	24.7	34.4	10.2	8.5	12.1
APPAREL	288	100.0	10.6	5.3	22.9	33.7	9.2	18.4	12.3
PAPER	521	100.0	5.2	3.9	15.8	44.2	13.7	17.3	12.6
PRINTING	968	100.0	1.5	2.8	14.2	41.0	20.9	19.7	12.8
CHEMICALS	958	100.0	3.5	3.3	12.9	38.5	14.9	26.9	12.8
PETROLEUM	184	100.0	4.5	1.3	10.4	43.4	19.4	21.1	12.8
RUBBER AND PLASTIC	406	100.0	4.7	6.3	16.2	49.3	10.5	13.1	12.5
LEATHER	110	100.0	12.9	10.7	26.2	24.5	18.5	7.2	12.0
TRANSPORTATION AND PUBLIC UTILITIES	4,629	100.0	3.5	4.5	14.0	46.4	19.8	11.8	12.6
TRANSPORTATION	2,731	100.0	4.0	5.9	18.3	45.8	17.7	8.2	12.5
COMMUNICATIONS	772	100.0	0.9	1.1	5.0	43.3	29.6	20.0	13.0
OTHER PUBLIC UTILITIES	1,125	100.0	3.8	3.4	9.8	49.8	18.3	14.9	12.7
TRADE	10,890	100.0	3.7	3.5	19.2	38.2	21.2	14.2	12.6
WHOLESALE	3,067	100.0	3.0	3.5	11.6	36.0	23.4	22.6	12.9
RETAIL	7,824	100.0	4.0	3.5	22.1	39.1	20.3	10.9	12.5
FINANCE	2,499	100.0	1.9	1.4	4.8	23.2	24.9	43.7	15.0
BANKING	928	100.0	0.8	0.5	2.4	21.9	25.0	49.4	15.9
INSURANCE AND REAL ESTATE	1,571	100.0	2.6	2.0	6.3	24.0	24.8	40.3	14.6
SERVICES	11,599	100.0	3.3	3.3	10.3	24.3	16.0	42.8	14.5
PRIVATE HOUSEHOLD	156	100.0	22.1	10.5	30.6	22.2	14.5	0.1	10.5
OTHER SERVICES	11,443	100.0	3.0	3.2	10.0	24.3	16.1	43.4	14.6
BUSINESS AND REPAIR	2,808	100.0	4.6	4.7	15.9	37.7	19.2	17.9	12.7
PERSONAL	856	100.0	5.4	5.1	14.5	38.7	23.1	13.3	12.6
ENTERTAINMENT AND RECREATION	603	100.0	2.3	1.2	19.3	30.0	27.8	19.4	12.9
PROFESSIONAL SERVICES	7,082	100.0	2.1	2.6	6.3	16.8	12.9	59.3	16.6
MEDICAL	824	100.0	0.7	2.9	6.3	13.4	8.2	68.6	18.1
HOSPITAL	1,050	100.0	3.1	2.0	8.6	30.0	22.4	33.8	14.0
WELFARE	731	100.0	5.2	5.1	7.7	16.3	11.4	54.3	16.2
EDUCATION	2,942	100.0	2.0	2.8	7.4	13.6	10.8	63.4	16.8
OTHER	1,535	100.0	0.8	1.2	2.0	15.8	13.8	66.4	16.7
FORESTRY AND FISHERIES	94	100.0	12.3	1.2	11.6	28.7	17.0	29.1	12.9
PUBLIC ADMINISTRATION	3,354	100.0	1.5	1.9	5.6	37.4	24.8	28.8	13.4
POSTAL	511	100.0	1.2	1.7	4.8	51.2	31.8	9.4	12.8
OTHER FEDERAL	950	100.0	0.8	0.8	2.8	29.1	20.8	45.7	14.8
STATE	595	100.0	0.9	1.6	4.4	38.4	18.7	36.1	13.7
LOCAL	1,299	100.0	2.3	2.8	8.4	37.7	27.9	20.9	13.0

See footnotes at end of table.

Table B-15. Continued—Industry of employed persons 16 years old and over by sex and years of school completed, March 1981

SEX AND INDUSTRY	TOTAL EM- PLOYED (THOU- SANDS)	PERCENT DISTRIBUTION BY YEARS OF SCHOOL COMPLETED						MEDIAN SCHOOL YEARS COM- PLETED	
		TOTAL	ELEMENTARY		HIGH SCHOOL		COLLEGE		
			LESS THAN 8 YEARS ¹	8	1 TO 3	4	1 TO 3		4 OR MORE
Women									
TOTAL	42,885	100.0	2.8	2.8	13.1	45.6	19.2	16.5	12.7
AGRICULTURE	528	100.0	5.2	8.8	17.0	43.1	16.1	9.8	12.4
NONAGRICULTURAL INDUSTRIES	42,357	100.0	2.8	2.7	13.0	45.6	19.2	16.6	12.7
MINING	145	100.0	-	-	5.7	35.3	30.5	28.5	(8)
CONSTRUCTION	460	100.0	0.9	3.1	10.7	56.6	18.3	10.5	12.6
MANUFACTURING	6,767	100.0	5.9	5.4	18.4	51.2	12.1	7.0	12.4
DURABLE GOODS	3,299	100.0	3.9	4.1	17.5	54.4	13.5	6.6	12.5
ORDNANCE	48	(2)	(2)	(2)	(2)	(2)	(2)	(2)	(2)
LUMBER	102	100.0	10.3	1.3	24.0	39.3	21.3	3.8	(2)
FURNITURE	152	100.0	10.3	7.9	20.3	50.8	9.2	1.5	12.2
STONE	132	100.0	3.8	8.6	16.1	51.3	12.3	7.9	12.4
PRIMARY METALS	146	100.0	3.9	1.3	15.4	51.0	18.8	9.6	12.6
FABRICATED METALS	323	100.0	7.3	6.4	14.9	52.5	13.5	5.3	12.4
MACHINERY	606	100.0	1.5	2.9	15.0	57.8	14.3	8.5	12.5
ELECTRICAL EQUIPMENT	973	100.0	3.7	4.0	19.3	57.0	10.6	5.5	12.4
TRANSPORTATION EQUIPMENT	350	100.0	0.3	3.5	14.8	56.7	15.9	8.8	12.6
INSTRUMENTS	245	100.0	2.1	4.2	18.7	55.0	12.1	7.9	12.5
OTHER DURABLE GOODS	222	100.0	7.8	4.2	24.0	47.3	13.1	3.6	12.3
NONDURABLE GOODS	3,468	100.0	7.9	6.7	19.2	48.2	10.7	7.3	12.3
FOOD	525	100.0	6.5	5.3	21.1	50.7	11.0	5.2	12.3
TOBACCO	23	(2)	(2)	(2)	(2)	(2)	(2)	(2)	(2)
TEXTILES	321	100.0	7.9	9.2	30.7	44.6	5.9	1.6	12.0
APPAREL	954	100.0	15.9	11.1	22.2	42.8	4.3	3.7	12.0
PAPER	177	100.0	4.0	6.2	14.9	56.6	9.6	8.7	12.4
PRINTING	657	100.0	0.6	2.7	11.0	53.6	16.7	15.4	12.7
CHEMICALS	341	100.0	2.7	2.3	13.6	47.4	19.6	14.4	12.7
PETROLEUM	64	(2)	(2)	(2)	(2)	(2)	(2)	(2)	(2)
RUBBER AND PLASTIC	246	100.0	8.9	5.7	16.7	54.5	13.1	1.0	12.3
LEATHER	160	100.0	12.1	10.0	29.8	40.3	4.9	2.9	11.8
TRANSPORTATION AND PUBLIC UTILITIES	1,739	100.0	0.6	0.9	7.2	58.1	22.0	11.2	12.7
TRANSPORTATION	781	100.0	0.8	0.8	11.9	53.8	22.8	9.9	12.7
COMMUNICATIONS	699	100.0	-	0.8	2.5	62.8	20.2	13.6	12.7
OTHER PUBLIC UTILITIES	259	100.0	1.8	1.2	5.7	58.2	24.3	8.8	12.7
TRADE	9,401	100.0	1.8	2.5	20.5	50.3	18.0	6.9	12.5
WHOLESALE	989	100.0	1.7	1.2	8.6	53.9	23.8	10.9	12.7
RETAIL	8,412	100.0	1.8	2.6	21.9	49.9	17.4	6.4	12.5
FINANCE	3,651	100.0	0.4	0.7	4.8	57.6	24.3	12.3	12.8
BANKING	1,864	100.0	0.1	0.5	4.5	59.7	23.1	12.1	12.8
INSURANCE AND REAL ESTATE	1,786	100.0	0.6	1.0	5.1	55.5	25.5	12.4	12.8
SERVICES	18,284	100.0	3.1	2.7	10.3	36.8	20.5	26.6	12.9
PRIVATE HOUSEHOLD	1,147	100.0	16.8	8.7	33.7	32.2	6.7	1.9	11.2
OTHER SERVICES	17,138	100.0	2.2	2.3	8.7	37.1	21.4	28.3	13.0
BUSINESS AND REPAIR	1,347	100.0	2.4	1.6	9.9	47.8	20.0	18.2	12.8
PERSONAL	1,698	100.0	5.2	6.1	17.9	51.9	14.5	4.4	12.4
ENTERTAINMENT AND RECREATION PROFESSIONAL SERVICES	393	100.0	2.2	2.9	16.6	39.8	22.2	16.2	12.7
MEDICAL	13,679	100.0	1.8	1.9	7.2	34.1	22.4	32.6	13.7
HOSPITAL	2,613	100.0	2.2	2.3	11.4	42.6	27.2	14.2	12.8
WELFARE	3,204	100.0	1.9	1.9	7.2	37.9	31.3	19.8	13.1
EDUCATION	1,028	100.0	5.6	3.4	9.3	34.1	21.1	26.4	12.9
OTHER	5,546	100.0	1.2	1.7	5.6	25.9	14.9	50.6	16.0
FORESTRY AND FISHERIES	1,287	100.0	-	0.8	4.4	42.2	23.5	29.0	13.3
FORESTRY AND FISHERIES	21	(2)	(2)	(2)	(2)	(2)	(2)	(2)	(2)
PUBLIC ADMINISTRATION	1,909	100.0	0.4	0.5	5.8	51.6	25.4	16.2	12.8
POSTAL	159	100.0	0.6	1.0	6.6	62.2	23.5	6.1	12.7
OTHER FEDERAL	656	100.0	0.2	0.2	4.1	48.2	28.4	19.0	12.9
STATE	412	100.0	0.6	0.1	6.2	49.9	20.9	22.4	12.9
LOCAL	682	100.0	0.5	1.0	7.1	53.6	25.7	12.1	12.8

¹ Includes persons reporting no school years completed.

² Percent not shown where base is less than 75,000.

Appendix C. Revised 1980 Tables

Table C-1. Labor force status of the population 16 years and over by sex, race, and years of school completed, March 1980¹

(Numbers in thousands)

	Men				Women			
	Total	White	Black	Hispanic	Total	White	Black	Hispanic
Population, total.....	79,014	69,439	7,884	4,043	87,939	76,232	9,817	4,351
8 years or less ²	11,886	9,812	1,847	1,374	12,803	10,420	2,037	1,483
High school: 1 to 3 years.....	14,674	12,229	2,160	902	16,287	13,331	2,665	919
4 years.....	25,978	23,167	2,351	1,023	35,024	31,234	3,192	1,300
College: 1 to 3 years.....	12,990	11,606	1,066	473	13,386	11,825	1,252	430
4 years or more.....	13,487	12,624	458	271	10,439	9,422	671	219
Labor force, total.....	60,514	53,883	5,360	3,259	44,934	38,810	5,112	2,089
8 years or less.....	5,944	5,013	802	1,054	2,800	2,207	494	491
High school: 1 to 3 years.....	9,666	8,215	1,292	642	6,675	5,427	1,128	379
4 years.....	22,093	19,717	2,012	905	20,207	17,766	2,105	781
College: 1 to 3 years.....	10,709	9,604	849	416	8,119	7,074	838	286
4 years or more.....	12,103	11,334	405	242	7,134	6,335	546	152
Labor force participation rate, total (in percent).....	76.6	77.6	68.0	80.6	51.1	50.9	52.1	48.0
8 years or less.....	50.0	51.1	43.4	76.7	21.9	21.2	24.3	33.1
High school: 1 to 3 years.....	65.9	67.2	59.8	71.2	41.0	40.7	42.3	41.2
4 years.....	85.0	85.1	85.5	88.4	57.7	56.9	65.9	60.0
College: 1 to 3 years.....	82.4	82.7	79.6	87.9	60.7	59.8	67.0	66.6
4 years or more.....	89.7	89.8	88.4	89.5	68.3	67.2	81.4	69.6
Unemployed, total.....	4,101	3,303	720	271	3,033	2,286	682	220
8 years or less.....	574	480	83	98	282	216	60	71
High school: 1 to 3 years.....	1,241	956	257	79	886	631	239	66
4 years.....	1,530	1,243	261	64	1,287	981	279	56
College: 1 to 3 years.....	535	433	95	20	398	304	87	21
4 years or more.....	221	191	24	10	180	153	18	4
Unemployment rate, total.....	6.8	6.1	13.4	8.3	6.7	5.9	13.3	10.5
8 years or less.....	9.6	9.6	10.3	9.3	10.1	9.8	12.1	14.5
High school: 1 to 3 years.....	12.8	11.6	19.9	12.3	13.3	11.6	21.2	17.5
4 years.....	6.9	6.3	13.0	7.1	6.4	5.5	13.2	7.2
College: 1 to 3 years.....	5.0	4.5	11.2	4.9	4.9	4.3	10.4	7.5
4 years or more.....	1.8	1.7	5.9	4.1	2.5	2.4	3.3	2.9

¹ The data in all tables for 1980 are based on population weights from the 1980 decennial census and are comparable with March 1981 data. Previously published 1980 educational attainment data (as they appeared in News Release USDL 81-17) were based on population weights projected from the 1970 decennial census.

² This category in all tables includes persons reporting no school years completed.

Table C-2. Labor force participation rates of the population 16 years and over by age, sex, race, and years of school completed, March 1980

Age	Years of school completed									
	Men					Women				
	Total	Less than 4 years high school	4 years high school only	College, 1 to 3 years	College, 4 years or more	Total	Less than 4 years high school	4 years high school only	College, 1 to 3 years	College, 4 years or more
All persons										
Total, 16 years and over.....	76.6	58.8	85.0	82.4	89.7	51.1	32.6	57.7	60.7	68.3
16 to 19 years.....	57.7	53.0	74.1	51.0	-	48.9	40.6	66.8	51.3	(1)
20 to 24 years.....	84.5	86.7	92.9	72.3	83.4	67.0	44.7	71.5	66.3	83.6
25 to 34 years.....	94.5	88.1	96.3	94.2	95.7	66.0	49.3	64.3	70.5	77.5
35 to 44 years.....	95.0	87.4	96.4	96.6	98.4	66.0	53.5	67.5	70.1	74.7
45 to 54 years.....	90.8	84.7	92.3	92.7	97.0	59.6	47.5	62.4	66.2	73.6
55 to 64 years.....	72.3	62.0	76.8	79.2	84.7	41.5	30.6	47.0	48.9	54.4
55 to 59 years.....	80.6	71.2	84.3	87.9	89.3	48.6	36.6	53.6	54.7	61.4
60 to 64 years.....	62.5	52.5	67.8	68.7	77.3	33.6	25.2	38.2	41.0	46.3
65 years and over.....	18.9	14.5	22.3	26.1	32.9	8.3	6.4	10.6	10.7	12.3
White										
Total, 16 years and over.....	77.6	60.0	85.1	82.7	89.8	50.9	32.1	56.9	59.8	67.2
16 to 19 years.....	61.2	56.9	75.6	53.9	-	52.2	44.3	69.0	52.3	(1)
20 to 24 years.....	85.8	90.7	94.1	73.1	83.8	68.8	47.1	72.8	67.8	84.1
25 to 34 years.....	95.4	90.7	97.2	94.6	96.1	65.5	48.5	63.3	69.6	76.8
35 to 44 years.....	95.9	90.1	96.8	96.9	98.5	65.5	53.3	66.6	69.3	73.6
45 to 54 years.....	91.7	86.3	92.6	93.3	97.1	59.6	47.2	62.0	65.1	72.3
55 to 64 years.....	73.5	63.8	76.6	79.4	84.8	41.3	29.1	46.8	48.1	53.7
55 to 59 years.....	82.0	73.4	84.2	88.4	89.7	48.5	35.1	53.4	54.0	60.5
60 to 64 years.....	63.5	54.4	67.4	68.4	77.2	33.3	23.9	38.0	40.0	46.0
65 years and over.....	19.1	14.4	21.9	26.0	33.1	8.2	6.2	10.3	10.6	12.6
Black										
Total, 16 years and over.....	68.0	52.3	85.5	79.6	88.4	52.1	34.5	65.9	67.0	81.4
16 to 19 years.....	38.4	34.2	61.3	(1)	-	30.7	23.2	52.3	(1)	(1)
20 to 24 years.....	77.4	71.6	87.2	66.6	(1)	57.3	35.9	66.1	56.4	78.9
25 to 34 years.....	88.5	79.1	91.4	90.9	93.9	71.4	53.6	73.3	78.7	88.4
35 to 44 years.....	86.3	74.5	93.7	92.3	96.5	69.6	55.0	75.6	76.4	93.8
45 to 54 years.....	82.4	77.6	90.2	81.8	(1)	59.5	49.9	67.1	75.1	87.2
55 to 64 years.....	59.0	51.5	79.5	(1)	(1)	42.6	37.5	50.7	(1)	(1)
55 to 59 years.....	67.4	60.9	84.4	(1)	(1)	48.7	42.5	56.6	(1)	(1)
60 to 64 years.....	48.0	39.7	(1)	(1)	(1)	35.4	32.5	41.2	(1)	(1)
65 years and over.....	17.4	14.8	31.7	(1)	(1)	9.6	8.3	19.0	(1)	(1)
Hispanic										
Total, 16 years and over.....	80.6	74.5	88.4	87.9	89.5	48.0	36.2	60.0	66.6	69.6
16 to 19 years.....	55.5	51.5	72.9	(1)	-	38.7	32.2	58.5	(1)	(1)
20 to 24 years.....	88.2	90.2	90.3	80.7	(1)	57.3	44.6	64.4	68.3	(1)
25 to 34 years.....	93.2	93.5	94.4	94.2	87.1	54.3	42.0	60.3	67.5	76.0
35 to 44 years.....	94.1	91.7	97.3	95.9	(1)	56.8	46.1	64.4	(1)	(1)
45 to 54 years.....	91.7	88.5	97.3	(1)	(1)	52.2	43.2	65.6	(1)	(1)
55 to 64 years.....	71.9	68.6	(1)	(1)	(1)	34.2	27.9	(1)	(1)	(1)
55 to 59 years.....	82.3	79.5	(1)	(1)	(1)	37.4	30.2	(1)	(1)	(1)
60 to 64 years.....	56.1	50.8	(1)	(1)	(1)	29.9	24.8	(1)	(1)	(1)
65 years and over.....	21.0	20.0	(1)	(1)	(1)	8.1	7.3	(1)	(1)	(1)

¹ Percent not shown where base is less than 75,000.

Table C-3. Labor force status and labor force participation rates of women 16 years old and over by marital status, age, and years of school completed, March 1980

Labor force status, marital status, and age	Total (thousands)	Percent	Years of school completed						Median school years completed
			Less than 4 years high school			High school 4 years	College		
			Total	8 years or less	1 to 3 years		1 to 3 years	4 years or more	
Percent distribution									
Labor force									
Single									
Total, 16 years and over.....	11,242	100.0	24.2	2.8	21.4	37.9	20.9	17.0	12.7
16-19 years.....	3,660	100.0	55.5	2.3	53.3	37.4	7.1	-	11.7
20-24 years.....	3,824	100.0	6.4	1.2	5.2	41.4	35.9	16.2	13.2
25-34 years.....	2,417	100.0	8.5	2.9	5.6	32.1	21.6	37.8	14.3
35-44 years.....	565	100.0	12.9	5.8	7.1	37.3	16.3	33.5	13.0
45-54 years.....	392	100.0	21.9	12.7	9.2	43.4	11.2	23.4	12.6
55-64 years.....	284	100.0	18.9	11.3	7.6	44.1	17.3	19.6	12.7
65 years and over.....	100	100.0	23.9	7.7	16.1	23.7	12.8	39.7	13.6
Married, husband present									
Total, 16 years and over.....	24,900	100.0	17.4	6.2	11.2	48.6	17.1	16.9	12.7
16-19 years.....	358	100.0	30.6	5.9	24.7	61.4	7.9	-	12.3
20-24 years.....	2,684	100.0	13.9	3.1	10.8	56.6	20.0	9.5	12.6
25-34 years.....	7,547	100.0	10.8	2.9	7.9	44.3	21.3	23.6	12.9
35-44 years.....	6,188	100.0	17.4	5.3	12.1	48.3	15.6	18.7	12.7
45-54 years.....	4,910	100.0	21.7	8.4	13.3	50.9	13.9	13.5	12.6
55-64 years.....	2,824	100.0	26.0	13.0	13.0	48.9	13.5	11.6	12.5
65 years and over.....	389	100.0	38.6	27.7	11.0	39.2	12.6	9.6	12.3
Other marital status									
Total, 16 years and over.....	8,792	100.0	27.6	10.7	16.9	43.6	17.3	11.5	12.5
16-19 years.....	72	100.0	60.6	3.5	57.1	35.4	4.0	-	11.4
20-24 years.....	563	100.0	24.8	4.0	20.7	53.1	18.0	4.2	12.5
25-34 years.....	2,293	100.0	16.0	3.4	12.6	47.0	23.2	13.8	12.7
35-44 years.....	1,814	100.0	22.6	6.0	16.7	43.0	19.9	14.5	12.6
45-54 years.....	1,704	100.0	32.0	12.5	19.6	41.1	15.0	11.9	12.4
55-64 years.....	1,652	100.0	34.1	17.6	16.5	44.9	11.8	9.2	12.4
65 years and over.....	692	100.0	51.7	32.5	19.2	30.8	10.0	7.5	11.7
Not in labor force									
Single									
Total, 16 years and over.....	7,031	100.0	56.4	11.8	44.6	20.7	17.6	5.3	11.6
16-19 years.....	3,811	100.0	75.8	6.3	69.5	17.1	7.0	.1	10.9
20-24 years.....	1,474	100.0	20.7	5.8	14.9	20.5	51.3	7.5	13.5
25-34 years.....	454	100.0	36.0	16.5	19.4	34.6	16.3	13.1	12.4
35-44 years.....	155	100.0	63.9	35.8	28.0	21.1	6.5	8.5	10.5
45-54 years.....	164	100.0	58.3	45.7	12.5	26.2	5.6	9.9	10.0
55-64 years.....	237	100.0	39.1	30.6	8.4	33.6	8.9	18.4	12.3
65 years and over.....	737	100.0	43.3	30.5	12.8	25.9	13.1	17.7	12.3
Married, husband present									
Total, 16 years and over.....	24,799	100.0	35.0	18.2	16.8	42.8	12.6	9.6	12.4
16-19 years.....	392	100.0	63.7	15.6	48.1	34.2	2.1	-	11.1
20-24 years.....	1,754	100.0	27.8	7.1	20.7	54.6	14.0	3.6	12.4
25-34 years.....	5,172	100.0	18.9	6.8	12.2	47.8	18.3	15.0	12.7
35-44 years.....	3,709	100.0	25.4	9.9	15.5	46.3	14.6	13.8	12.5
45-54 years.....	3,907	100.0	34.7	15.7	19.0	46.2	11.5	7.6	12.3
55-64 years.....	4,861	100.0	41.5	23.9	17.6	40.8	10.5	7.1	12.2
65 years and over.....	5,004	100.0	53.0	36.9	16.1	30.8	8.5	7.6	11.4
Other marital status									
Total, 16 years and over.....	11,175	100.0	62.4	41.6	20.7	24.6	8.1	5.0	10.2
16-19 years.....	70	100.0	78.7	20.5	58.2	20.1	1.3	-	10.5
20-24 years.....	259	100.0	55.1	16.7	38.4	36.1	7.6	1.2	11.6
25-34 years.....	681	100.0	42.5	13.9	28.6	37.9	14.3	5.3	12.2
35-44 years.....	559	100.0	56.3	24.4	32.0	30.3	9.5	3.9	11.4
45-54 years.....	683	100.0	62.7	35.0	27.8	27.1	6.1	4.0	10.6
55-64 years.....	1,604	100.0	59.4	38.6	20.8	29.3	7.6	3.7	10.6
65 years and over.....	7,320	100.0	65.4	47.9	17.5	21.2	7.8	5.5	9.4

See footnotes at end of table.

Table C-3. Continued—Labor force status and labor force participation rates of women 16 years old and over by marital status, age, and years of school completed, March 1980

Marital status and age	Total	Less than 4 years high school			High school 4 years	College	
		Total	8 years or less	1 to 3 years		1 to 3 years	4 years or more
Labor force participation rates							
Single							
Total, 16 years and over.....	61.5	40.7	27.9	43.4	74.5	65.6	83.6
16 to 24 years.....	58.6	41.7	28.1	42.9	75.5	61.5	84.6
25 to 34 years.....	84.2	55.7	48.2	60.6	83.1	87.6	93.9
35 to 54 years.....	75.0	44.9	39.0	54.3	83.6	87.7	90.7
55 years and over.....	28.3	16.0	11.9	24.8	35.5	34.6	35.7
Married, husband present							
Total, 16 years and over.....	50.1	33.3	25.4	40.1	53.3	57.6	63.9
16 to 24 years.....	58.6	39.5	36.0	40.6	61.4	68.9	80.2
25 to 34 years.....	59.3	45.5	38.7	48.7	57.5	63.0	69.6
35 to 44 years.....	62.5	53.4	47.4	56.5	63.5	64.1	69.4
45 to 54 years.....	55.7	44.1	40.2	46.9	58.1	60.3	68.9
55 to 64 years.....	36.7	26.6	24.0	30.0	41.0	42.7	48.7
65 years and over.....	7.2	5.4	5.5	5.0	9.0	10.3	8.9
Other marital status¹							
Total, 16 years and over.....	44.0	25.8	16.8	39.1	58.3	62.6	64.6
16 to 24 years.....	65.9	48.0	(2)	53.0	75.2	83.2	(2)
25 to 34 years.....	77.1	55.9	45.3	59.8	80.7	84.6	89.8
35 to 44 years.....	76.4	56.6	44.2	62.9	82.2	87.1	92.4
45 to 54 years.....	71.4	56.1	47.1	63.7	79.1	85.9	88.0
55 to 64 years.....	50.7	37.2	31.9	45.0	61.2	61.5	71.9
65 years and over.....	8.6	7.0	6.0	9.4	12.1	10.8	11.4

¹ Includes widowed, divorced, and separated women.

² Percent not shown where base is less than 75,000.

Table C-4. Occupation groups of employed persons 16 years old and over by sex and years of school completed, March 1980

Occupation and sex	Total employed (thousands)	Percent distribution by years of school completed									Median school years completed
		Total	Elementary	High school			College				
				8 or less	1 to 3	4	1 to 3	4 or more	4		
Both sexes											
All occupation groups.....	98,314	100.0	8.0	14.3	40.2	18.2	19.2	11.0	2.6	5.6	12.7
Professional and technical workers.....	16,094	100.0	.4	2.1	14.3	19.0	64.1	29.7	9.8	24.6	16.5
Managers and administrators, except farm.....	10,973	100.0	3.4	6.1	33.7	23.4	33.4	20.8	4.3	8.3	13.9
Sales workers.....	6,114	100.0	3.4	12.8	38.6	24.1	21.1	16.0	2.0	3.1	12.9
Clerical workers.....	18,487	100.0	1.8	9.2	55.3	24.4	9.2	7.4	.9	.9	12.6
Craft and kindred workers.....	12,550	100.0	10.8	16.8	51.3	16.1	5.0	3.9	.5	.6	12.7
Operatives, except transport.....	10,480	100.0	17.5	23.7	48.0	9.0	1.7	1.3	.2	.3	12.2
Transport equipment operatives.....	3,488	100.0	13.9	24.5	46.6	12.7	2.3	1.7	.3	.4	12.2
Laborers, except farm.....	4,387	100.0	16.9	30.0	37.7	11.9	3.4	2.6	.4	.3	12.1
Private household workers.....	1,046	100.0	26.0	34.9	29.2	7.0	2.9	2.3	.4	.1	11.1
Service workers, except private household.....	12,254	100.0	12.8	25.7	40.2	16.4	5.0	3.8	.6	.6	12.3
Farmers and farm managers.....	1,413	100.0	22.3	11.7	44.3	12.3	9.4	7.0	1.4	1.0	12.4
Farm laborers and supervisors.....	1,030	100.0	32.3	26.7	28.1	9.0	3.8	2.9	.3	.6	11.0
Men											
All occupation groups.....	56,413	100.0	9.5	14.9	36.4	18.0	21.1	11.5	2.6	7.0	12.7
Professional and technical workers.....	8,893	100.0	.4	2.3	12.5	17.5	67.3	27.2	8.9	31.2	16.6
Engineers.....	1,455	100.0	.2	1.6	10.1	18.9	69.2	44.2	10.6	14.4	16.4
Physicians, dentists, and related practitioners.....	684	100.0	.3	.3	1.1	.3	98.0	7.3	5.1	85.6	18+
Health workers, except practitioners.....	292	100.0	1.2	3.8	22.8	34.2	38.1	17.3	8.9	11.8	14.8
Teachers, except college.....	951	100.0	.3	1.9	2.4	5.5	89.8	33.0	20.7	36.0	17.3
Engineering and science technicians.....	894	100.0	.2	4.8	36.1	43.0	16.0	11.5	2.2	2.4	13.8
Other professional--salaried.....	4,060	100.0	.5	2.4	11.8	16.4	69.0	28.0	8.2	32.7	16.7
Other professional--self-employed.....	556	100.0	(1)	(1)	(1)	(1)	(1)	(1)	(1)	(1)	(1)
Managers and administrators, except farm.....	8,040	100.0	3.8	5.9	30.3	23.7	36.4	22.6	4.5	9.3	14.2
Salaried--manufacturing.....	1,377	100.0	2.0	3.9	26.0	24.1	44.0	29.8	6.0	8.2	15.0
Salaried--other industries.....	5,270	100.0	2.5	5.4	29.6	23.9	38.6	22.6	4.9	11.1	14.4
Self-employed--retail trade.....	550	100.0	12.8	10.5	38.9	20.2	17.6	15.5	.3	1.8	12.7
Self-employed--other industries.....	844	100.0	8.8	9.0	36.0	24.2	21.9	14.8	2.3	4.8	12.9
Sales workers.....	3,388	100.0	3.4	9.8	31.2	26.7	29.0	21.7	2.7	4.6	13.6
Retail trade.....	1,181	100.0	6.2	15.9	37.6	28.7	11.6	9.0	1.1	1.5	12.7
Other.....	2,207	100.0	1.9	6.5	27.8	25.6	38.3	28.4	3.5	6.3	14.5
Clerical workers.....	3,710	100.0	4.1	10.9	39.3	29.6	16.2	12.1	1.8	2.2	12.9
Bookkeepers.....	164	100.0	1.2	4.0	30.6	32.6	31.5	21.7	5.0	4.9	14.0
Office machine operators.....	266	100.0	.3	5.1	37.9	42.3	14.3	11.7	.8	1.9	13.5
Stenographers, typists, and secretaries.....	81	100.0	-	3.4	41.8	38.2	16.6	13.0	1.8	1.7	13.4
Other clerical workers.....	3,198	100.0	4.6	11.9	39.7	28.2	15.5	11.7	1.7	2.1	12.8
Craft and kindred workers.....	11,860	100.0	11.0	17.0	50.9	16.2	4.8	3.7	.5	.6	12.4
Carpenters.....	1,187	100.0	12.5	17.0	49.5	14.5	6.6	4.9	1.0	.7	12.4
Other construction craft workers.....	2,427	100.0	14.3	20.2	47.7	14.5	3.4	2.5	.4	.5	12.3
Blue-collar worker supervisors, n.e.c.....	1,529	100.0	8.1	14.9	49.7	18.9	8.4	6.8	.6	1.0	12.5
Machinists and job setters.....	677	100.0	10.5	16.3	55.4	15.6	2.1	2.0	.1	(1)	12.4
Metal craft, except mechanics.....	631	100.0	10.2	18.6	57.6	11.1	2.5	2.0	.1	.3	12.4
Mechanics--automobile.....	1,225	100.0	11.3	22.6	52.7	12.2	1.1	.5	.5	.2	12.3
Mechanics--except automobile.....	2,067	100.0	11.6	14.4	49.7	19.4	5.0	3.9	.6	.5	12.5
All other.....	2,118	100.0	8.0	14.3	53.2	18.0	6.5	5.1	.4	1.0	12.5
Operatives, except transport.....	6,290	100.0	15.9	21.8	48.6	11.6	2.1	1.6	.2	.4	12.3
Mine workers.....	251	100.0	18.0	18.1	50.3	12.0	1.6	.6	.5	.6	12.3
Motor vehicle and equipment.....	383	100.0	14.6	24.5	48.6	11.8	.5	-	-	.5	12.2
Other durable goods.....	2,780	100.0	15.7	20.1	51.2	11.5	1.6	1.0	.3	.2	12.3
Nondurable goods.....	1,365	100.0	17.3	19.6	48.3	11.8	3.0	2.2	.1	.7	12.3
All other.....	1,511	100.0	14.9	26.9	44.0	11.4	2.8	2.5	.1	.2	12.2
Transport equipment operatives.....	3,186	100.0	14.8	24.9	45.7	12.2	2.4	1.8	.3	.3	12.2
Drivers and deliverymen.....	2,658	100.0	14.6	25.1	45.7	12.2	2.5	1.9	.3	.3	12.2
Others.....	528	100.0	16.0	23.9	45.7	12.5	1.9	1.3	-	.5	12.2
Laborers, except farm.....	3,903	100.0	17.6	30.1	36.4	12.6	3.3	2.6	.4	.3	12.1
Private household workers.....	23	100.0	(1)	(1)	(1)	(1)	(1)	(1)	(1)	(1)	(1)
Service workers, except private household.....	5,059	100.0	14.2	25.6	34.9	18.7	6.6	4.9	.8	.9	12.3
Cleaning service.....	1,606	100.0	22.1	28.8	34.1	11.7	3.3	2.4	.5	.4	11.9
Food service.....	1,590	100.0	13.1	38.3	26.4	17.0	5.2	4.2	.2	.8	11.9
Health service.....	194	100.0	7.3	17.5	42.6	25.4	7.2	5.1	1.0	1.1	12.6
Personal service.....	414	100.0	12.1	17.7	44.2	17.8	8.2	6.1	1.1	1.0	12.5
Protective service.....	1,255	100.0	7.5	9.3	42.3	29.2	11.8	8.4	1.7	1.6	12.8
Farmers and farm managers.....	1,276	100.0	23.5	11.1	43.4	12.4	9.5	7.2	1.4	1.0	12.4
Farm laborers and supervisors.....	785	100.0	35.2	27.2	25.1	8.8	3.7	3.0	.2	.5	10.6

See footnote at end of table.

Table C-4. Continued—Occupation of employed persons 16 years old and over by sex and years of school completed, March 1980

Occupation and sex	Total employed (thousands)	Percent distribution by years of school completed										Median school years completed
		Total	Elementary	High school			College					
			8 or less	1 to 3	4	1 to 3	4 or more	4	5	6 or more		
Women												
All occupation groups.....	41,901	100.0	6.0	13.8	45.2	18.4	16.6	10.4	2.6	3.6	12.7	
Professional and technical workers.....	7,202	100.0	.4	2.0	16.5	20.8	60.3	32.8	10.9	16.5	16.3	
Engineers.....	50	100.0	(1)	(1)	(1)	(1)	(1)	(1)	(1)	(1)	(1)	
Physicians, dentists, and related practitioners.....	108	100.0	(1)	(1)	7.2	6.6	86.2	11.1	15.2	59.8	18+	
Health workers, except practitioners.....	1,986	100.0	.5	1.8	22.2	39.9	35.6	25.6	4.7	5.3	15.2	
Teachers, except college.....	2,365	100.0	.1	1.3	5.5	6.1	87.0	47.9	17.8	21.3	16.8	
Engineering and science technicians.....	194	100.0	1.4	13.7	37.1	27.7	20.0	15.6	2.5	1.8	12.9	
Other professional--salaried.....	2,326	100.0	.6	2.1	21.0	19.6	56.8	26.4	10.0	20.3	16.3	
Other professional--self-employed.....	172	100.0	1.0	.8	22.8	19.9	55.6	27.7	7.7	20.1	16.2	
Managers and administrators, except farm.....	2,932	100.0	2.5	6.6	43.1	22.6	25.2	16.0	3.8	5.5	13.0	
Salaried--manufacturing.....	190	100.0	1.0	2.5	54.3	23.1	19.0	13.8	2.5	2.8	12.9	
Salaried--other industries.....	2,290	100.0	1.5	6.0	42.5	23.3	26.7	16.9	3.8	6.0	13.0	
Self-employed--retail trade.....	302	100.0	12.1	11.5	45.5	17.3	13.6	9.4	2.3	2.0	12.6	
Self-employed--other industries.....	150	100.0	.5	10.6	32.2	23.2	33.5	17.1	8.6	7.7	13.7	
Sales workers.....	2,726	100.0	3.5	16.5	47.8	20.8	11.4	9.0	1.2	1.2	12.6	
Retail trade.....	1,949	100.0	4.4	21.3	49.9	17.7	6.6	5.5	.5	.7	12.5	
Other sales workers.....	777	100.0	1.2	4.6	42.5	28.5	23.2	17.8	2.8	2.6	13.2	
Clerical workers.....	14,777	100.0	1.3	8.8	59.3	23.1	7.5	6.2	.7	.6	12.7	
Bookkeepers.....	1,735	100.0	1.2	6.5	62.7	20.9	8.7	7.1	.9	.6	12.7	
Office machine operators.....	733	100.0	.6	8.3	61.4	25.1	4.6	4.0	.3	.4	12.7	
Stenographers, typists, and secretaries....	4,926	100.0	.5	4.5	61.1	26.4	7.6	6.5	.5	.6	12.7	
Other clerical workers.....	7,383	100.0	1.9	12.2	57.2	21.3	7.4	6.1	.7	.6	12.6	
Craft and kindred workers.....	690	100.0	7.5	12.6	57.2	15.0	7.7	5.8	.6	1.2	12.5	
Operatives, except transport.....	4,190	100.0	19.9	26.7	47.1	5.1	1.2	1.0	.1	.1	12.1	
Mine workers.....	8	100.0	(1)	(1)	(1)	(1)	(1)	(1)	(1)	(1)	(1)	
Motor vehicle and equipment.....	83	100.0	1.9	24.9	60.9	12.3	-	-	-	-	12.4	
Other durable goods, manufacturing.....	1,580	100.0	16.2	27.6	49.2	5.6	1.4	1.3	-	.1	12.1	
Nondurable goods, manufacturing.....	1,957	100.0	24.2	26.3	44.9	3.6	1.0	.8	.1	.1	11.9	
All other.....	562	100.0	17.8	26.3	46.7	7.9	1.3	.9	.3	.1	12.1	
Transport equipment operatives.....	302	100.0	4.2	20.0	56.8	17.5	1.4	.7	.1	.6	12.5	
Laborers, except farm.....	484	100.0	12.0	29.3	47.6	7.1	4.1	3.1	.4	.7	12.2	
Private household workers.....	1,023	100.0	25.6	35.2	29.4	6.9	2.9	2.3	.4	.1	11.1	
Service workers, except private household....	7,195	100.0	11.7	25.8	43.9	14.7	3.8	3.0	.5	.3	12.3	
Cleaning service.....	894	100.0	25.1	32.9	36.5	4.6	1.0	.7	.2	-	11.3	
Food service.....	3,042	100.0	11.7	33.6	40.3	11.6	2.8	2.1	.5	.2	12.1	
Health service.....	1,753	100.0	7.1	15.3	49.5	23.8	4.2	3.6	.4	.2	12.6	
Personal service.....	1,383	100.0	9.5	17.8	49.3	16.3	7.1	5.3	.9	.8	12.5	
Protective service.....	122	100.0	4.1	21.5	48.0	17.3	9.0	6.1	1.4	1.5	12.5	
Farmers and farm managers.....	136	100.0	11.3	17.6	52.3	11.1	7.7	5.3	1.3	1.2	12.4	
Farm laborers and supervisors.....	245	1,000	232	251	378	98	41	26	6	9	120	

¹ Percent and median not shown where base is less than 75,000.

Table C-5. Occupation groups of employed persons 16 years and over by race, sex, and years of school completed, March 1980

Major occupation group, race, and sex	Total employed (thousands)	Years of school completed							Median school years completed
		Total	Less than 4 years high school			High school 4 years	College		
			Total	8 years or less	1 to 3 years		1 to 3 years	4 years or more	
Men									
White									
All occupation groups.....	50,580	100.0	23.4	9.0	14.4	36.5	18.1	22.0	12.7
Professional, technical and kindred workers..	8,268	100.0	2.7	.4	2.3	12.4	17.2	67.7	16.6
Managers and administrators, except farm....	7,669	100.0	9.3	3.6	5.7	30.4	23.9	36.3	14.3
Sales workers.....	3,210	100.0	12.8	3.1	9.7	31.8	26.3	29.1	13.6
Clerical workers.....	3,269	100.0	14.7	4.1	10.6	39.6	28.7	16.9	12.9
Craft and kindred workers.....	10,815	100.0	27.5	10.8	16.7	51.4	16.3	4.8	12.4
Operatives, except transport.....	5,423	100.0	37.3	16.0	21.3	48.9	11.5	2.3	12.3
Transport equipment operatives.....	2,705	100.0	38.5	14.2	24.3	46.8	12.0	2.8	12.2
Nonfarm laborers.....	3,197	100.0	47.2	16.4	30.8	36.2	13.1	3.5	12.1
Private household workers.....	12	100.0	37.9	10.8	27.1	41.6	16.3	4.2	12.3
Service workers, except private household...	4,117	100.0	39.0	13.6	25.4	35.0	19.1	6.9	12.3
Farmers and farm managers.....	1,245	100.0	33.9	22.8	11.1	44.0	12.3	9.8	12.4
Farm laborers and supervisors.....	649	100.0	59.5	31.7	27.8	26.6	9.4	4.5	11.0
Black									
All occupation groups.....	4,640	100.0	37.8	15.5	22.3	37.7	16.2	8.2	12.3
Professional, technical and kindred workers..	367	100.0	4.8	1.1	3.7	19.6	26.1	49.3	15.9
Managers and administrators, except farm....	242	100.0	16.1	6.4	9.7	30.2	21.4	32.2	13.5
Sales workers.....	130	100.0	21.2	8.1	13.1	19.6	34.8	24.4	13.6
Clerical workers.....	346	100.0	18.7	4.0	14.7	38.6	36.7	6.0	12.8
Craft and kindred workers.....	860	100.0	35.6	13.0	22.6	47.1	14.4	2.8	12.3
Operatives, except transport.....	728	100.0	41.9	15.8	26.1	47.7	9.9	.4	12.2
Transport equipment operatives.....	450	100.0	47.4	18.1	29.3	39.9	12.4	.3	12.1
Nonfarm laborers.....	612	100.0	53.3	25.1	28.2	38.0	7.5	1.2	11.6
Private household workers.....	9	100.0	(1)	(1)	(1)	(1)	(1)	(1)	(1)
Service workers, except private household...	769	100.0	44.7	17.9	26.8	33.8	17.2	4.3	12.2
Farmers and farm managers.....	14	100.0	(1)	(1)	(1)	(1)	(1)	(1)	(1)
Farm laborers and supervisors.....	114	100.0	79.6	52.3	27.3	17.3	3.1	-	8.6
Women									
White									
All occupation groups.....	36,524	100.0	18.6	5.5	13.1	46.0	18.5	16.9	12.7
Professional, technical and kindred workers..	6,431	100.0	2.2	.4	1.8	16.6	21.3	59.8	16.3
Managers and administrators, except farm....	2,758	100.0	8.9	2.2	6.7	43.3	22.6	25.1	12.9
Sales workers.....	2,561	100.0	19.9	3.4	16.5	48.1	21.0	11.0	12.6
Clerical workers.....	13,158	100.0	10.1	1.3	8.8	60.4	22.3	7.3	12.7
Craft and kindred workers.....	625	100.0	21.0	7.7	13.3	56.7	14.6	7.9	12.5
Operatives, except transport.....	3,453	100.0	47.3	21.5	25.0	46.6	4.9	1.2	12.1
Transport equipment operatives.....	265	100.0	23.1	3.1	20.0	60.1	15.8	1.0	12.4
Nonfarm laborers.....	418	100.0	41.0	12.3	28.7	49.5	5.2	4.4	12.2
Private household workers.....	676	100.0	53.2	17.6	35.6	34.7	8.7	3.5	11.7
Service workers, except private household...	5,826	100.0	35.3	10.5	24.8	45.2	15.2	4.3	12.3
Farmers and farm managers.....	133	100.0	28.3	11.0	17.3	52.4	11.4	7.9	12.4
Farm laborers and supervisors.....	219	100.0	49.9	24.4	25.5	35.3	10.2	4.6	12.0
Black									
All occupation groups.....	4,430	100.0	29.9	9.8	20.1	41.2	17.0	11.9	12.5
Professional, technical and kindred workers..	592	100.0	4.3	.5	3.8	17.4	17.3	61.0	16.3
Managers and administrators, except farm....	125	100.0	10.8	8.1	2.7	41.5	16.9	31.7	12.9
Sales workers.....	113	100.0	20.6	3.4	17.2	51.4	13.3	14.7	12.6
Clerical workers.....	1,333	100.0	10.3	1.2	9.1	52.8	30.1	6.7	12.8
Craft and kindred workers.....	58	100.0	(1)	(1)	(1)	(1)	(1)	(1)	(1)
Operatives, except transport.....	599	100.0	42.7	9.9	32.8	50.4	6.1	.8	12.1
Transport equipment operatives.....	32	100.0	(1)	(1)	(1)	(1)	(1)	(1)	(1)
Nonfarm laborers.....	53	100.0	(1)	(1)	(1)	(1)	(1)	(1)	(1)
Private household workers.....	329	100.0	76.9	41.7	35.2	18.7	3.5	.9	9.7
Service workers, except private household...	1,170	100.0	48.5	16.5	32.0	39.7	10.9	.5	12.0
Farmers and farm managers.....	2	100.0	(1)	(1)	(1)	(1)	(1)	(1)	(1)
Farm laborers and supervisors.....	23	100.0	(1)	(1)	(1)	(1)	(1)	(1)	(1)

¹ Percent and median not shown where base is less than 75,000.

Table C-6. Unemployment rates of persons 16 years old and over by sex, age, race, and years of school completed, March 1980

Sex and age	Years of school completed						
	Total	Less than 4 high school			High school 4 years	College	
		Total	8 years or less	1 to 3 years		1 to 3 years	4 years or more
Men							
All persons							
Total, 16 years and over.....	6.8	11.6	9.6	12.8	6.9	5.0	1.8
16 to 19 years.....	17.2	20.4	35.0	18.8	11.6	6.3	-
20 to 24 years.....	11.9	21.8	17.6	23.0	12.6	6.9	4.3
25 to 34 years.....	6.8	13.4	11.6	14.2	8.2	6.0	2.4
35 to 44 years.....	4.1	8.4	8.6	8.2	4.2	2.9	1.3
45 to 54 years.....	3.7	6.1	7.5	4.8	3.3	3.5	1.1
55 to 64 years.....	3.6	5.9	6.9	4.6	2.8	2.5	1.1
65 years and over.....	2.4	2.7	3.2	1.6	2.3	4.5	.4
White							
Total, 16 years and over.....	6.1	10.9	9.6	11.6	6.3	4.5	1.7
16 to 19 years.....	15.5	18.5	33.1	16.9	10.2	6.4	-
20 to 24 years.....	10.9	21.0	17.8	22.2	11.5	6.2	4.0
25 to 34 years.....	6.0	12.0	10.6	12.8	7.4	5.5	2.3
35 to 44 years.....	3.8	8.1	9.3	7.1	4.1	2.4	1.2
45 to 54 years.....	3.3	5.5	7.1	3.9	3.1	3.4	.9
55 to 64 years.....	3.4	6.0	7.0	4.8	2.7	2.5	1.0
65 years and over.....	2.2	2.5	2.9	1.7	2.1	4.7	.4
Black							
Total, 16 years and over.....	13.4	16.2	10.3	19.9	13.0	11.2	5.9
16 to 19 years.....	34.6	37.6	(1)	35.8	28.2	(1)	-
20 to 24 years.....	20.9	25.1	17.2	25.7	21.8	14.7	(1)
25 to 34 years.....	13.9	19.1	17.9	19.4	14.8	11.8	5.7
35 to 44 years.....	7.3	10.6	5.2	14.3	4.5	9.6	4.7
45 to 54 years.....	7.7	9.3	9.0	9.6	5.6	(1)	(1)
55 to 64 years.....	5.3	5.7	6.8	3.6	4.3	(1)	(1)
65 years and over.....	3.4	3.1	3.7	(1)	(1)	(1)	(1)
Hispanic							
Total, 16 years and over.....	8.3	10.4	9.3	12.3	7.1	4.9	4.1
16 to 19 years.....	14.6	17.2	(1)	15.7	9.3	-	-
20 to 24 years.....	9.8	13.6	9.1	18.7	10.1	1.5	(1)
25 to 34 years.....	8.7	10.5	10.1	11.3	6.5	8.7	6.9
35 to 44 years.....	6.3	6.9	7.0	6.8	7.3	(1)	(1)
45 to 54 years.....	5.6	8.4	8.5	(1)	1.6	(1)	(1)
55 to 64 years.....	5.9	8.1	9.1	(1)	(1)	(1)	(1)
65 years and over.....	4.2	(1)	(1)	(1)	(1)	(1)	(1)
Women							
All persons							
Total, 16 years and over.....	6.7	12.3	10.1	13.3	6.4	4.9	2.5
16 to 19 years.....	17.0	21.5	32.7	20.8	12.3	10.0	-
20 to 24 years.....	9.3	19.2	15.7	20.0	10.2	6.2	4.6
25 to 34 years.....	6.8	14.2	15.8	13.6	7.6	5.9	2.6
35 to 44 years.....	4.7	10.0	12.8	8.8	4.1	3.3	2.3
45 to 54 years.....	4.1	7.6	9.5	6.4	3.6	2.3	1.9
55 to 64 years.....	2.5	3.7	4.2	3.3	2.6	1.3	.8
65 years and over.....	3.0	3.9	3.4	4.7	1.1	6.4	2.0
White							
Total, 16 years and over.....	5.9	11.1	9.8	11.6	5.5	4.3	2.4
16 to 19 years.....	15.1	19.0	30.3	18.4	10.9	8.9	-
20 to 24 years.....	7.6	14.5	14.4	14.5	8.5	5.2	4.2
25 to 34 years.....	5.7	11.6	15.6	10.0	6.4	5.3	2.4
35 to 44 years.....	4.3	10.1	13.7	8.5	3.6	2.9	2.6
45 to 54 years.....	3.8	6.8	7.9	6.1	3.7	2.2	1.4
55 to 64 years.....	2.5	3.8	4.1	3.5	2.5	1.4	.9
65 years and over.....	2.8	3.5	3.3	3.8	1.2	5.3	2.1
Black							
Total, 16 years and over.....	13.3	18.4	12.1	21.2	13.2	10.4	3.3
16 to 19 years.....	36.0	44.7	(1)	43.8	25.9	(1)	-
20 to 24 years.....	22.9	45.4	(1)	46.0	22.4	16.3	(1)
25 to 34 years.....	13.7	25.4	(1)	25.8	13.7	10.0	4.8
35 to 44 years.....	7.6	10.0	10.9	9.7	8.5	6.3	-
45 to 54 years.....	6.3	9.9	16.2	6.5	3.0	4.0	2.7
55 to 64 years.....	2.9	3.7	4.8	2.1	2.8	(1)	(1)
65 years and over.....	6.0	6.2	(1)	(1)	(1)	(1)	(1)
Hispanic							
Total, 16 years and over.....	10.5	15.8	14.5	17.5	7.2	7.5	2.9
16 to 19 years.....	23.8	31.5	(1)	32.4	(1)	(1)	-
20 to 24 years.....	11.3	17.3	(1)	(1)	10.0	7.5	(1)
25 to 34 years.....	10.1	16.2	(1)	14.3	5.9	10.4	(1)
35 to 44 years.....	8.8	15.0	(1)	(1)	5.3	(1)	(1)
45 to 54 years.....	6.9	8.6	(1)	(1)	6.7	(1)	(1)
55 to 64 years.....	3.8	(1)	(1)	(1)	(1)	(1)	(1)
65 years and over.....	(1)	(1)	(1)	(1)	(1)	(1)	(1)

¹ Percent not shown where base is less than 75,000.

Table C-7. Duration of unemployment of persons 16 years and over by sex and years of school completed, March 1980

Duration of unemployment and sex	Total unemployed (thousands)	Years of school completed							Median school years completed
		Total	Less than 4 years high school			High school 4 years	College		
			Total	8 years or less	1 to 3 years		1 to 3 years	4 years or more	
Both sexes									
Total	7,134	100.0	41.8	12.0	29.8	39.5	13.1	5.6	12.2
1 to 4 weeks.....	2,883	100.0	43.1	11.1	32.0	37.5	13.5	5.9	12.2
5 to 14 weeks.....	2,567	100.0	41.8	12.6	29.2	40.8	12.9	4.5	12.2
15 to 26 weeks.....	1,017	100.0	41.9	14.9	27.0	38.9	12.5	6.6	12.2
27 weeks or more.....	667	100.0	36.1	9.1	27.0	44.1	12.8	7.0	12.3
Men									
Total	4,101	100.0	44.2	14.0	30.3	37.3	13.1	5.4	12.2
1 to 4 weeks.....	1,437	100.0	45.2	12.8	32.4	34.8	14.6	5.4	12.1
5 to 14 weeks.....	1,562	100.0	45.0	14.6	30.3	38.7	11.5	4.8	12.1
15 to 26 weeks.....	685	100.0	44.9	17.0	27.9	36.4	11.8	6.9	12.1
27 weeks or more.....	417	100.0	37.1	10.6	26.5	42.1	15.6	5.3	12.3
Women									
Total	3,033	100.0	38.5	9.3	29.2	42.4	13.1	5.9	12.3
1 to 4 weeks.....	1,446	100.0	41.0	9.4	31.7	40.1	12.4	6.5	12.2
5 to 14 weeks.....	1,005	100.0	36.9	9.5	27.4	43.9	15.1	4.2	12.3
15 to 26 weeks.....	331	100.0	35.8	10.7	25.1	44.2	14.0	6.1	12.3
27 weeks or more.....	250	100.0	34.4	6.5	27.9	47.6	8.2	9.8	12.3

Table C-8. Industry of employed persons 16 years and over by sex and years of school completed, March 1980

Sex and industry	Total employed (thousands)	Percent distribution by years of school completed									Median school years completed
		Total	Elementary		High school		College				
			Less than 8 years	8	1 to 3	4	1 to 3	4 or more	4	5 or more	
Men											
Total.....	56,413	100.0	4.8	4.7	14.9	36.4	18.0	21.1	11.5	9.6	12.7
Agriculture.....	2,441	100.0	15.0	11.6	17.9	35.5	11.3	8.7	5.7	3.0	12.2
Nonagricultural industries.....	53,972	100.0	4.3	4.4	14.8	36.5	18.3	21.6	11.7	9.9	12.7
Mining.....	748	100.0	4.3	9.5	16.4	41.8	13.6	14.4	9.5	5.1	12.5
Construction.....	5,414	100.0	6.4	7.2	19.0	44.0	15.0	8.3	5.9	2.4	12.4
Manufacturing.....	15,199	100.0	5.3	5.5	15.4	42.4	16.5	14.9	10.0	4.9	12.6
Durable goods.....	9,981	100.0	5.3	5.7	15.1	43.0	16.9	14.0	9.4	4.5	12.6
Ordnance.....	186	100.0	1.2	3.8	5.0	25.7	23.2	41.1	22.8	18.4	14.9
Lumber.....	582	100.0	15.1	10.3	24.4	35.3	8.2	6.7	4.8	2.0	12.0
Furniture.....	362	100.0	20.6	5.1	19.4	40.5	8.8	5.7	4.4	1.3	12.1
Stone, clay, glass.....	550	100.0	5.7	8.6	20.1	43.1	12.1	10.4	6.9	3.5	12.4
Primary metals.....	1,138	100.0	6.4	8.3	17.4	45.8	13.2	8.9	6.9	2.0	12.4
Fabricated metals.....	1,173	100.0	5.4	6.9	19.6	46.1	12.5	9.5	7.0	2.5	12.4
Machinery.....	2,290	100.0	3.3	4.5	12.6	46.7	18.8	14.2	9.9	4.3	12.6
Electrical equipment.....	1,337	100.0	2.2	3.4	10.5	37.9	23.4	22.6	15.0	7.4	12.9
Transportation equipment.....	1,780	100.0	3.6	5.1	13.1	45.1	18.0	14.7	9.0	5.7	12.6
Instruments.....	312	100.0	2.6	3.5	9.0	39.0	24.5	21.5	12.1	9.4	12.9
Other durable goods.....	270	100.0	6.7	3.8	18.3	35.5	23.6	12.0	11.6	.4	12.6
Nondurable goods.....	5,218	100.0	5.4	5.1	15.8	41.2	15.8	16.7	11.1	5.6	12.6
Food.....	1,221	100.0	7.4	6.5	16.3	44.8	15.5	9.6	6.9	2.7	12.4
Tobacco.....	42	100.0	(1)	(1)	(1)	(1)	(1)	(1)	(1)	(1)	(1)
Textiles.....	380	100.0	10.3	9.7	27.0	33.5	9.7	9.8	9.0	.8	12.1
Apparel.....	301	100.0	9.5	6.6	16.8	34.1	14.8	18.2	13.6	4.5	12.5
Paper.....	540	100.0	5.2	4.1	14.1	49.2	11.8	15.6	10.2	5.4	12.5
Printing.....	955	100.0	1.9	3.2	16.6	42.3	18.9	17.1	11.7	5.4	12.7
Chemicals.....	1,013	100.0	3.8	2.8	11.7	36.2	17.1	28.3	16.5	11.8	12.9
Petroleum.....	187	100.0	5.0	3.2	9.6	34.3	23.2	24.7	12.8	11.9	12.9
Rubber and plastics.....	473	100.0	3.8	5.7	14.2	46.0	15.0	15.3	11.0	4.3	12.6
Leather.....	106	100.0	10.0	11.5	24.9	33.8	16.1	3.7	2.6	1.1	12.1
Transportation and public utilities.....	4,759	100.0	3.7	4.3	14.2	44.8	20.6	12.4	9.4	3.0	12.6
Railroad and railway express.....	538	100.0	5.7	5.0	14.2	53.2	15.2	6.8	5.2	1.6	12.5
Other transportation.....	2,340	100.0	3.9	5.8	19.4	41.7	20.6	8.6	6.5	2.1	12.5
Communications.....	770	100.0	.9	.7	4.3	43.5	27.6	22.9	17.5	5.4	13.1
Other public utilities.....	1,112	100.0	4.2	3.1	10.0	48.4	18.3	16.0	12.0	4.0	12.7
Trade.....	10,848	100.0	4.3	3.8	20.4	36.8	20.8	13.9	10.4	3.5	12.6
Wholesale.....	2,835	100.0	4.2	3.4	12.2	37.4	21.3	21.5	16.4	5.0	12.8
Retail.....	8,014	100.0	4.4	4.0	23.3	36.6	20.6	11.2	8.2	3.0	12.5
Finance.....	2,396	100.0	2.4	2.2	6.3	25.0	23.6	40.5	28.8	11.7	14.8
Banking.....	816	100.0	.5	.6	3.2	24.1	25.4	46.2	34.0	12.2	15.5
Insurance and real estate.....	1,580	100.0	3.3	3.0	7.9	25.4	22.7	37.6	26.1	11.5	14.4
Private household services.....	95	100.0	33.2	5.0	24.7	17.8	11.1	8.2	7.3	.9	10.4
Other services.....	11,096	100.0	3.1	3.0	10.8	23.2	16.5	43.4	14.8	28.6	14.8
Business and repair.....	2,555	100.0	5.0	4.6	1.6	36.1	19.0	17.6	11.2	6.4	12.6
Business.....	1,280	100.0	3.7	3.3	13.6	26.2	22.7	30.5	18.1	12.4	13.4
Repair.....	1,275	100.0	6.4	6.0	21.6	46.0	15.3	4.6	4.2	.4	12.3
Personal services, except private household.....	872	100.0	5.3	5.7	15.7	38.4	21.2	13.6	10.8	2.8	12.6
Entertainment and recreation.....	576	100.0	4.1	3.2	70.5	32.7	22.7	16.9	11.1	5.8	12.7
Professional services.....	6,986	100.0	2.0	2.1	6.8	15.4	14.5	59.2	17.0	42.2	16.5
Medical.....	868	100.0	1.9	2.3	6.4	13.9	9.0	66.5	10.8	55.7	17+
Hospital.....	945	100.0	2.6	2.9	11.6	26.2	22.0	34.7	11.1	23.7	13.9
Welfare.....	721	100.0	5.1	4.0	8.8	18.5	15.4	48.3	16.6	31.8	15.7
Education.....	2,966	100.0	1.7	2.0	6.9	12.0	13.3	64.0	16.9	47.1	16.8
Other.....	1,486	100.0	.8	.6	3.0	14.8	14.8	66.1	24.7	41.4	16.7
Forestry and fisheries.....	107	100.0	5.9	5.9	13.1	44.4	12.3	18.4	14.6	3.8	12.6
Public administration.....	3,415	100.0	1.7	2.5	7.1	36.4	24.5	27.8	15.2	12.7	13.3
Postal.....	524	100.0	.8	1.6	3.2	53.7	31.2	9.5	7.4	2.1	12.8
Other federal.....	1,073	100.0	1.8	1.6	6.3	28.5	20.0	41.9	22.1	19.8	14.8
State.....	536	100.0	.8	2.7	4.5	33.1	22.0	36.9	16.7	20.2	14.2
Local.....	1,282	100.0	2.3	3.5	10.5	37.4	26.6	19.8	12.0	7.8	12.9

See footnote at end of table.

Table C-8. Continued—Industry of employed persons 16 years and over by sex and years of school completed, March 1980

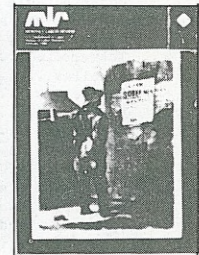
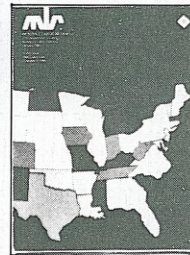
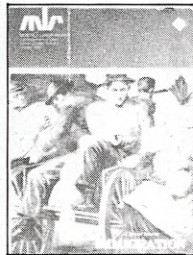
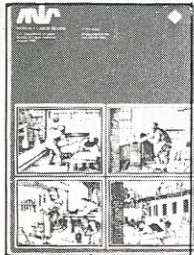
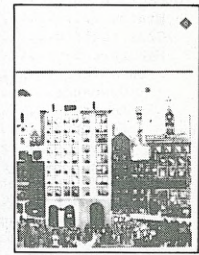
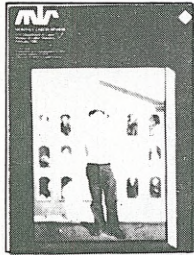
Sex and industry	Total employed (thousands)	Percent distribution by years of school completed										Median school years completed
		Total	Elementary			High school			College			
			Less than 8 years	8	1 to 3	4	1 to 3	4 or more	4	5 or more		
Women												
Total.....	41,901	100.0	2.8	3.2	13.8	45.2	18.4	16.6	10.4	6.2	12.7	
Agriculture.....	519	100.0	6.7	8.9	21.2	42.0	13.3	8.3	5.0	3.1	12.3	
Nonagricultural industries.....	41,382	100.0	2.8	3.1	13.7	45.2	18.5	16.7	10.5	6.2	12.7	
Mining.....	110	100.0	.0	.1	9.6	49.9	20.8	19.6	16.8	2.7	12.8	
Construction.....	463	100.0	.4	3.0	10.7	58.5	19.6	7.7	6.6	1.1	12.6	
Manufacturing.....	6,882	100.0	6.0	6.1	18.4	51.2	12.0	6.2	5.0	1.2	12.4	
Durable goods.....	3,398	100.0	3.9	5.1	17.8	53.3	14.0	6.0	5.0	.9	12.4	
Ordnance.....	45	100.0	(1)	(1)	(1)	(1)	(1)	(1)	(1)	(1)	(1)	
Lumber.....	80	100.0	2.8	3.5	28.3	46.6	10.9	7.9	5.4	2.3	12.3	
Furniture.....	162	100.0	7.9	7.0	23.7	51.0	8.9	1.5	.6	.9	12.2	
Stone, clay, glass.....	129	100.0	3.4	5.3	22.4	51.9	15.3	1.6	.2	1.4	12.4	
Primary metals.....	133	100.0	2.1	4.8	15.3	53.2	17.5	6.9	6.9	.0	12.5	
Fabricated metals.....	340	100.0	5.0	3.4	21.3	53.1	10.7	6.6	5.5	1.1	12.4	
Machinery.....	580	100.0	1.9	4.8	14.4	54.7	15.9	8.3	7.7	.6	12.5	
Electrical equipment.....	1,039	100.0	3.9	5.2	18.5	55.1	12.5	4.8	4.2	.6	12.4	
Transportation equipment.....	337	100.0	.8	3.1	13.8	52.8	20.4	9.1	7.6	1.5	12.6	
Instruments.....	310	100.0	3.3	7.3	15.9	52.9	15.2	5.4	3.9	1.5	12.4	
Other durable goods.....	242	100.0	11.9	6.8	19.8	46.5	10.8	4.2	4.2	.0	12.2	
Non-durable goods.....	3,484	100.0	8.1	7.2	19.1	49.2	10.0	6.5	5.1	1.4	12.3	
Food.....	522	100.0	8.0	7.1	16.7	53.1	10.3	4.9	4.0	.9	12.3	
Tobacco.....	14	100.0	(1)	(1)	(1)	(1)	(1)	(1)	(1)	(1)	(1)	
Textiles.....	365	100.0	11.1	9.7	28.2	40.1	8.0	2.8	1.8	1.0	12.0	
Apparel.....	983	100.0	13.8	11.1	24.6	43.1	5.1	2.4	1.9	.5	12.0	
Paper.....	186	100.0	3.7	4.8	20.3	62.3	5.6	3.2	1.5	1.7	12.3	
Printing.....	616	100.0	1.3	2.0	11.8	50.0	18.6	16.3	12.9	3.4	12.7	
Chemicals.....	342	100.0	4.2	2.5	10.3	53.9	16.2	13.0	10.4	2.6	12.6	
Petroleum.....	41	100.0	(1)	(1)	(1)	(1)	(1)	(1)	(1)	(1)	(1)	
Rubber and plastics.....	240	100.0	6.4	5.9	18.8	56.8	9.4	2.8	2.4	.4	12.3	
Leather.....	173	100.0	9.7	13.0	21.6	52.2	2.3	1.2	1.2	.0	12.1	
Transportation and public utilities.....	1,579	100.0	.8	.9	6.8	59.1	22.0	10.4	9.1	1.3	12.7	
Railroad and railway express.....	32	100.0	(1)	(1)	(1)	(1)	(1)	(1)	(1)	(1)	(1)	
Other transportation.....	648	100.0	1.3	.7	9.7	53.7	23.7	10.9	9.7	1.2	12.7	
Communications.....	663	100.0	.0	.6	4.4	64.6	19.9	10.5	9.0	1.4	12.7	
Other public utilities.....	235	100.0	1.7	2.3	5.1	57.2	23.8	9.9	8.4	1.5	12.7	
Trade.....	9,197	100.0	1.9	3.1	21.4	50.3	16.6	6.7	5.3	1.4	12.5	
Wholesale.....	1,049	100.0	1.3	2.2	8.8	57.3	21.5	8.9	7.6	1.3	12.7	
Retail.....	8,148	100.0	2.0	3.3	23.0	49.4	16.0	6.4	5.0	1.4	12.4	
Finance.....	3,461	100.0	.6	.7	5.1	58.7	22.2	12.7	9.7	3.0	12.7	
Banking.....	1,631	100.0	.5	.2	4.6	61.7	22.3	10.7	8.3	2.4	12.7	
Insurance and real estate.....	1,829	100.0	.6	1.2	5.6	56.0	22.0	14.5	11.0	3.5	12.8	
Private household services.....	1,085	100.0	15.3	10.0	34.5	29.4	7.5	3.4	2.4	1.0	11.1	
Other services.....	16,701	100.0	2.1	2.4	9.5	36.0	20.9	29.2	16.4	12.8	13.0	
Business and repair.....	1,232	100.0	2.8	1.8	10.4	46.4	23.8	14.8	11.1	3.7	12.8	
Business.....	1,037	100.0	2.6	1.3	9.8	45.2	24.3	16.8	12.5	4.4	12.8	
Repair.....	195	100.0	4.3	4.2	13.5	52.8	21.3	3.9	3.6	.3	12.5	
Personal services, except private household.....	1,665	100.0	4.8	7.3	21.3	46.8	14.7	5.1	3.9	1.2	12.4	
Entertainment and recreation.....	346	100.0	2.7	4.1	16.7	40.9	24.5	11.2	7.3	3.8	12.6	
Professional services.....	13,428	100.0	1.6	1.7	7.8	33.5	21.3	34.0	18.7	15.3	13.8	
Medical.....	2,438	100.0	2.3	2.3	11.2	43.3	26.4	14.6	9.0	5.5	12.8	
Hospital.....	3,188	100.0	1.5	2.1	8.7	37.3	30.1	20.3	14.0	6.4	13.0	
Welfare.....	963	100.0	5.2	3.4	8.3	36.1	17.8	29.2	16.5	12.7	12.9	
Education.....	5,679	100.0	1.1	1.3	6.0	25.1	14.2	52.3	26.3	26.0	16.1	
Other.....	11,160	100.0	.3	.4	6.1	41.2	24.5	27.4	17.2	10.2	13.2	
Forestry and fisheries.....	31	100.0	(1)	(1)	(1)	(1)	(1)	(1)	(1)	(1)	(1)	
Public administration.....	1,904	100.0	.5	1.1	7.6	49.4	26.1	15.3	10.0	5.3	12.8	
Postal.....	165	100.0	.1	1.1	6.7	60.5	23.0	8.6	7.0	1.6	12.7	
Other federal.....	705	100.0	.4	.2	6.0	49.7	26.8	16.9	9.8	7.1	12.9	
State.....	376	100.0	.4	.5	7.3	47.6	25.6	18.5	12.3	6.2	12.9	
Local.....	658	100.0	.8	2.3	9.7	47.4	26.3	13.5	9.7	3.8	12.8	

¹ Percent not shown where base is less than 75,000.



MONTHLY LABOR REVIEW
 U.S. Department of Labor
 Bureau of Labor Statistics
 Every month, 12 times a year

...is the oldest,
 most authoritative
 Government journal
 in its field



● Articles and reports on employment, prices, wages, productivity, job safety, and economic growth

● 40 pages of current labor statistics

● Developments in industrial relations

● Industry wage surveys

● Book reviews and notes

● Foreign labor developments

Mail to:
 Superintendent of Documents
 U.S. Government Printing Office
 Washington, D.C. 20402

Please enter my subscription to the *Monthly Labor Review* for 1 year at \$26.00. (Foreign subscribers add \$6.50.)

Remittance is enclosed.
 (Make checks payable to Superintendent of Documents.)

Charge to GPO Deposit Account No. _____

 Name

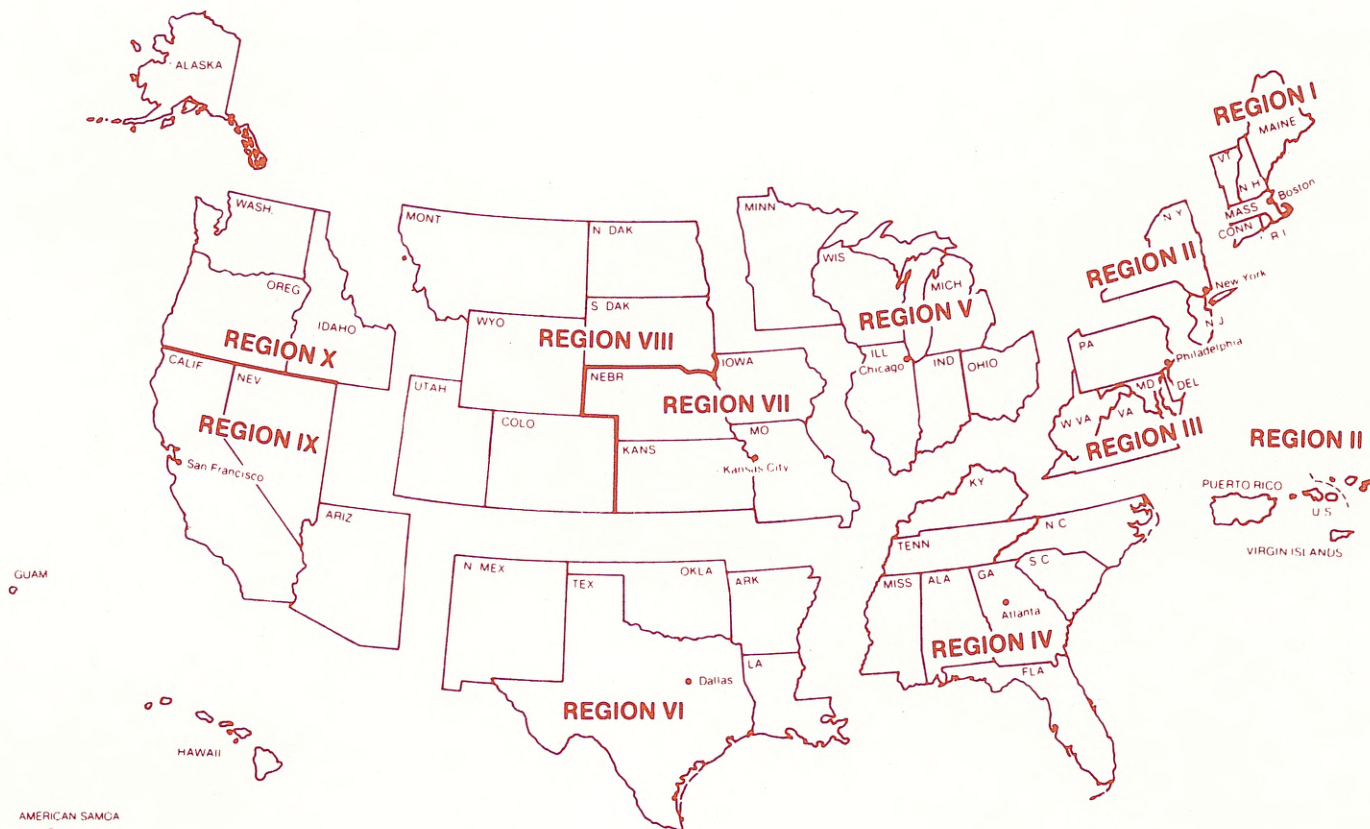
 Organization
 (if applicable)

 Address

 City, State,
 and ZIP Code

Bureau of Labor Statistics

Regional Offices



Region I

1603 JFK Federal Building
Government Center
Boston, Mass. 02203
Phone: (617) 223-6761

Region II

Suite 3400
1515 Broadway
New York, N.Y. 10036
Phone: (212) 944-3121

Region III

3535 Market Street
P.O. Box 13309
Philadelphia, Pa. 19101
Phone: (215) 596-1154

Region IV

1371 Peachtree Street, N.E.
Atlanta, Ga. 30367
Phone: (404) 881-4418

Region V

9th Floor
Federal Office Building
230 S. Dearborn Street
Chicago, Ill. 60604
Phone: (312) 353-1880

Region VI

Second Floor
555 Griffin Square Building
Dallas, Tex. 75202
Phone: (214) 767-6971

Regions VII and VIII

911 Walnut Street
Kansas City, Mo. 64106
Phone: (816) 374-2481

Regions IX and X

450 Golden Gate Avenue
Box 36017
San Francisco, Calif. 94102
Phone: (415) 556-4678