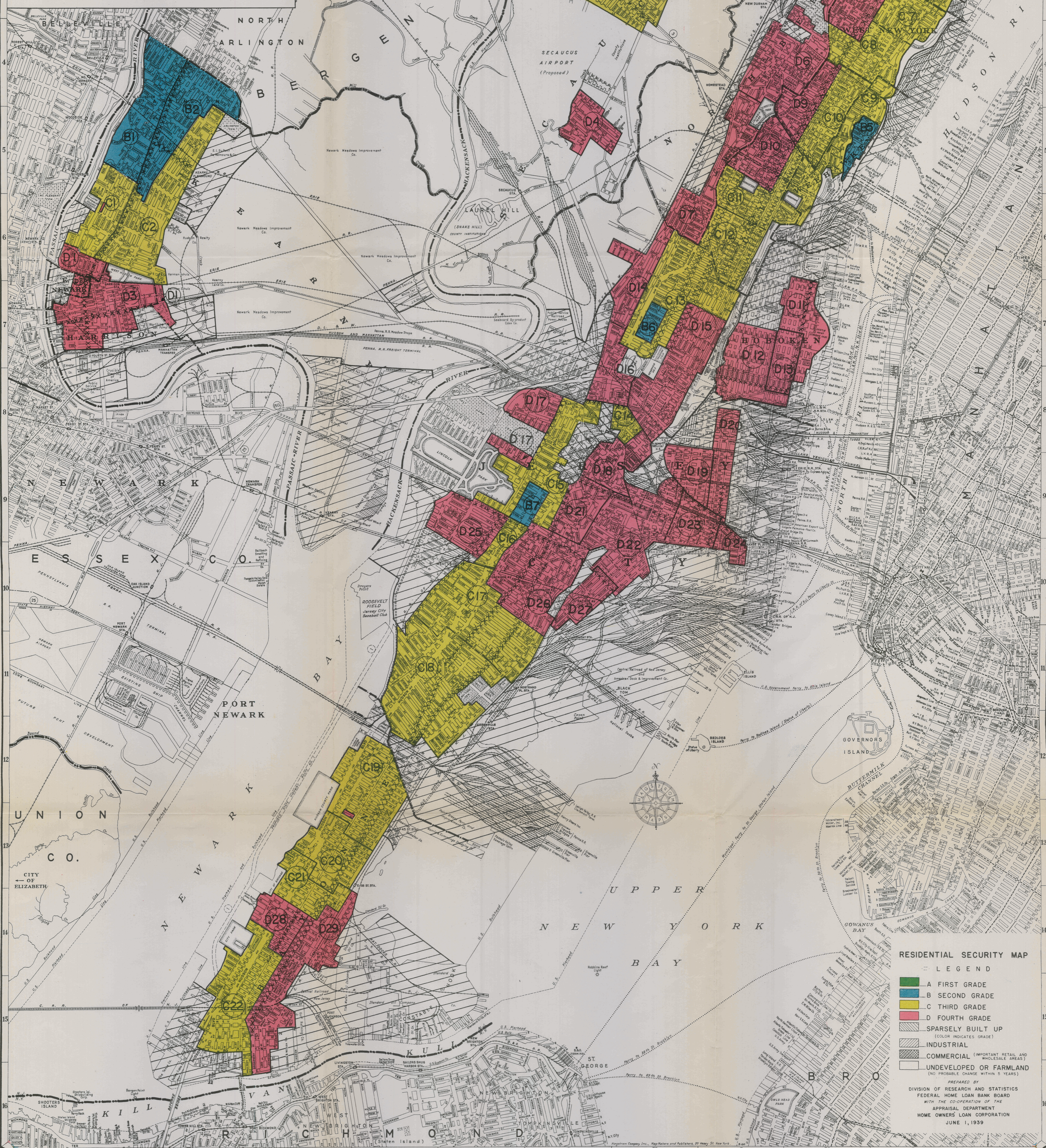
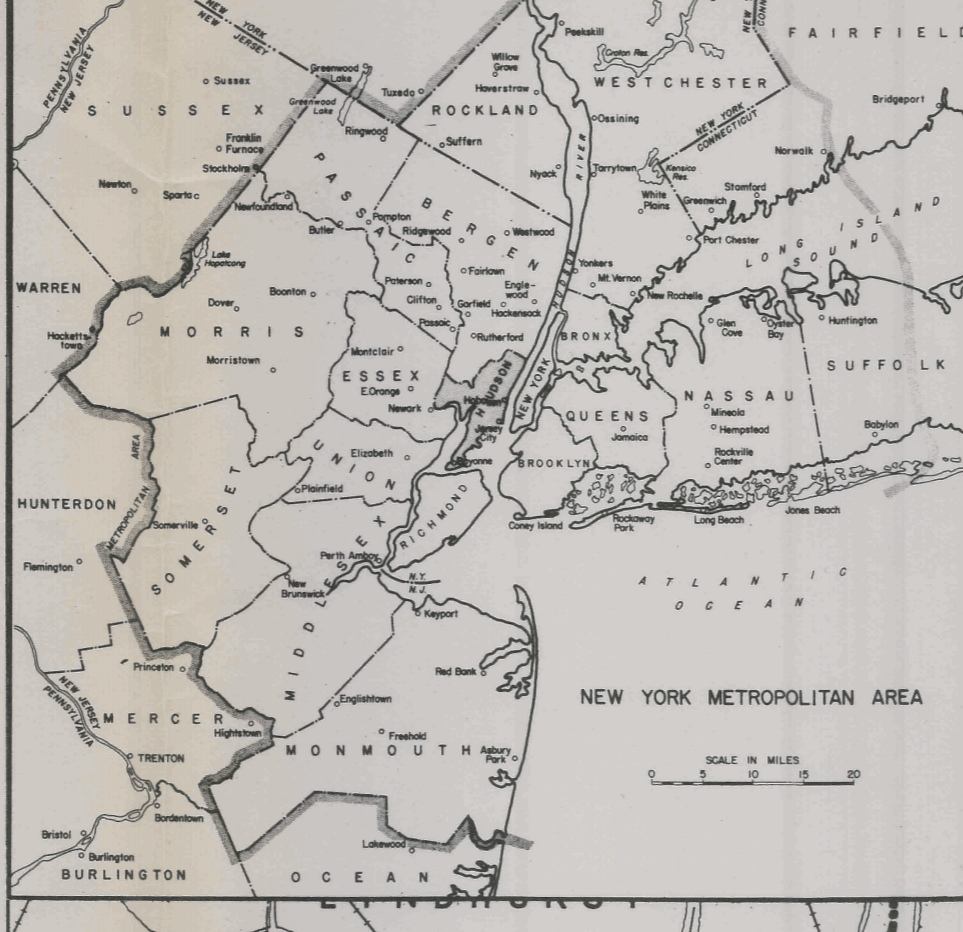


HAGSTROM'S STREET AND HOUSE-NUMBER MAP OF HUDSON COUNTY NEW JERSEY

INCLUDING SECTIONS OF MANHATTAN, BROOKLYN, RICHMOND BERGEN, ESSEX & UNION COUNTIES

EXPLANATION
 County Boundaries
 City and Town Boundaries
 National Lines & Stations
 Federal Lines
 Trolley Lines
 Main Auto Routes

Copyright by Hagstrom Company, Inc.



RESIDENTIAL SECURITY MAP
 LEGEND

- A FIRST GRADE
- B SECOND GRADE
- C THIRD GRADE
- D FOURTH GRADE
- SPARSELY BUILT UP (COLOR INDICATES GRADE)
- INDUSTRIAL
- COMMERCIAL (IMPORTANT RETAIL AND WHOLESALE AREAS)
- UNDEVELOPED OR FARMLAND (NO PROPOSED CHANGES WITHIN 5 YEARS)

PREPARED BY
 DIVISION OF RESEARCH AND STATISTICS
 FEDERAL HOME LOAN BANK BOARD
 WITH THE COOPERATION OF THE
 APPRAISAL DEPARTMENT
 HOME OWNERS LOAN CORPORATION
 JUNE 1, 1939

STREET AND AVENUE INDEX TO HUDSON COUNTY, N. J.

BAYONNE (City)		HARRISON (Town)		EAST NEWARK (City)		JERSEY CITY (City)		KEARNY (Town)		SECAUCUS (Town)		UNION CITY (City)		NORTH BERGEN (Town)	
A. Av.	C. 10 D.	1st St.	2nd St.	1st St.	2nd St.	1st St.	2nd St.	1st St.	2nd St.	1st St.	2nd St.	1st St.	2nd St.	1st St.	2nd St.