

6  
European Imp

Pictures taken in 1915

Compliments of  
J. C. Archbolds.  
4 Egyptian  
Deities





Bon Voyage.  
From  
Harry, William & Tom.

With the compliments of

AGUSTIN EDWARDS,

*Envoyé Extraordinaire et Ministre Plénipotentiaire du Chili.*

22. Grosvenor Square.

Mr. William Henry Porter

Bon Voyage.

From.

Harry, William & Tom

With best wishes

from Mr. Henry R. Towne.

121 Madison Avenue.

Cigars -

Mr. Louis Jay Horowitz



Digitized for FRASER

<http://fraser.stlouisfed.org/>

Federal Reserve Bank of St. Louis

Champaign

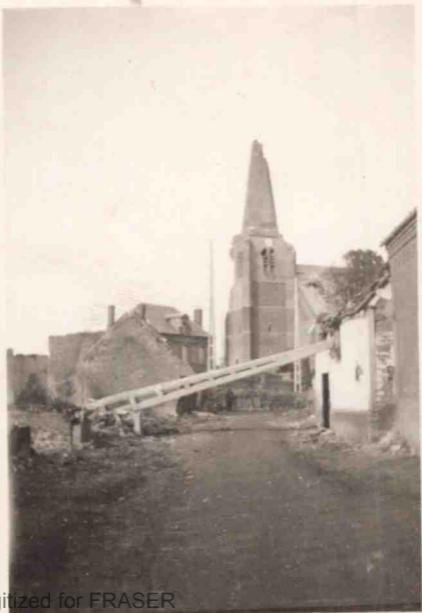
Oct 1915

Brionas

d for FRASER

aser.stlouisfed.org/

Reserve Bank of St. Louis





*Hébrnerne*

*Oct 1914*

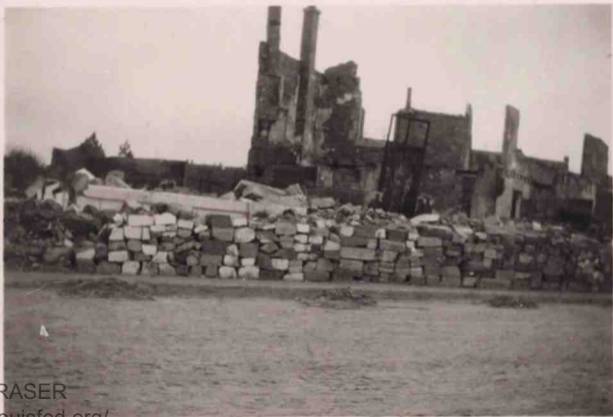


during the battle  
of Champagne  
Sept. 1914

tized for FRASER

[://fraser.stlouisfed.org/](http://fraser.stlouisfed.org/)

Federal Reserve Bank of St. Louis



or FRASER  
er.stlouisfed.org/  
eserve Bank of St. Louis

Bevigny

Dec 1915

SER

fed.org/

Bank of St. Louis



Digitized for FRASER

<http://fraser.stlouisfed.org/>

Federal Reserve Bank of St. Louis

Jermine

Oct 1914

Paris motor-buses carrying  
the 20<sup>th</sup> Army Corps during  
the race to the sea

or FRASER

er.stlouisfed.org/

eserve Bank of St. Louis



ASER

uisfed.org/

e Bank of St. Louis



Tomme

Oct 1914

a commanding-post



Albert

Mar. 1914



Albert

Nov. 1914



RASER

Albert

Nov. 1915







Somme  
March 1915  
artilleryman's  
dog-eat



Somme

April 1915

anti-aircraft gun



Chiepral

April 1915

first german line in  
background on left.

French line in the  
wood on the right -  
nobody can pass on  
the road between

(Taken from the  
other side of  
Ancre River)



Soenne

April 1915

firing a trench-  
mortar





Bois-le-Pêtre

Aug 1915

a first line trench

for FRASER

ser.stlouisfed.org/

Reserve Bank of St. Louis



Summe

May 1915

wire entanglements  
to be lowered in  
case of emergency



Summe

May 1915

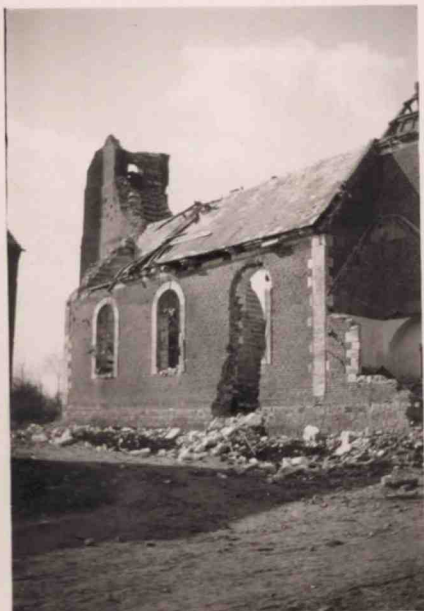
First time French



Summe

June 1915





Tomme

May 1915

a church



Sample

June 1915

A 220<sup>m</sup>/m mortar



Tomme

April 1915

the band



Champagne

Sept 1915

questioning the  
wounded just back  
from the fight





Norman

Sept 1914  
F

my first general



r FRASER

t.stlouisfed.org/

serve Bank of St. Louis

Chippaway

Sept 1911

Horses killed by bombardment





Tommie

Oct 1914

Captured barabarian gun





Somme

Oct 1914

Captured barabian  
ammunition wagon



RASER

[stlouisfed.org/](http://www.stlouisfed.org/)

ive Bank of St. Louis

Tomme

March 1915

75 m/m field gun under  
cover



or FRASER  
er.stlouisfed.org/  
eserve Bank of St. Louis

Somme

April 1915

Trench mortar drill



Tommy

April 1915

disguised Henry  
(leaning against  
second tree)





Tomme

Oct 1914

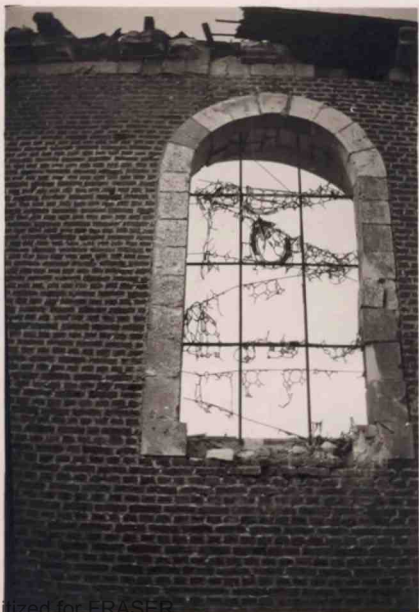
Prisoners from  
The Russian Guard



Tommy

April 1915

a patrol-dog



Examine

May 1915

aspect of stained  
glass after a  
bombardment



FRASER  
stlouisied.org/  
erve Bank of St. Louis

Somme

June 1915

155 m/m gun





Boris-le-Pitre

Aug 1915

First line trench

25 yards from enemy

Net against hand-  
grenades



itized for FRASER

[://fraser.stlouisfed.org/](http://fraser.stlouisfed.org/)

leral Reserve Bank of St. Louis

Bais-le-Pêtre

Aug 1915

Metz Cathedral in light

RASER

ouisfed.org/

ve Bank of St. Louis



Tomme

April 1915

a captured german  
Warrant - officer



zed for FRASER

/fraser.stlouisfed.org/

ral Reserve Bank of St. Louis

Champagne

Sept 1915

Tombs of German Officers  
(on captured soil) surrounded  
with empty bottles

FRASER

stlouisfed.org/

erve Bank of St. Louis





Champagne

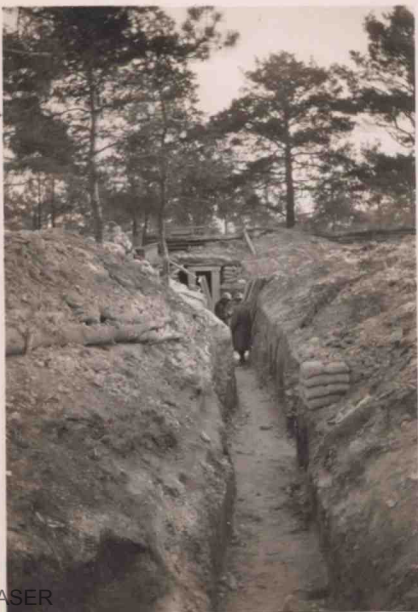
Sept 1915

a drug-out

FRASER

stlouisfed.org/

erve Bank of St. Louis



FRASER

[stlouisfed.org/](http://stlouisfed.org/)

erve Bank of St. Louis

Champagne

Sept 1915

my ~~is~~ dug-out



Lorraine

Dec 1915

Friends of Mountman  
Soldiers



Digitized for FRASER

<http://fraser.stlouisfed.org/>

Federal Reserve Bank of St. Louis

Champaign  
Dec 1911

officers' drug-out

FRASER

[www.stlouisfed.org/](http://www.stlouisfed.org/)

Bank of St. Louis



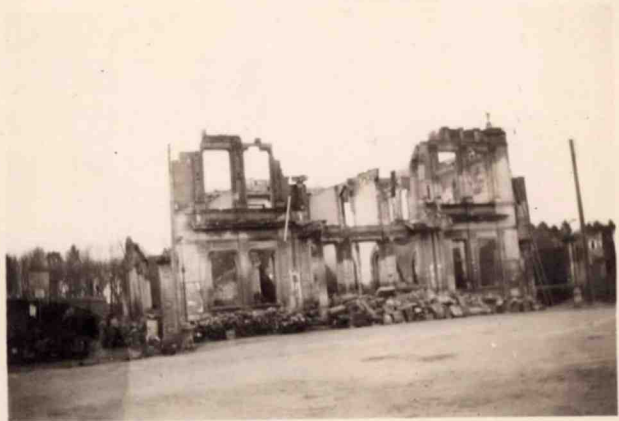


Chempagn

Dec 1915

2 Russians evaded  
from German lines





Resiny

Dec 1915

ed for FRASER

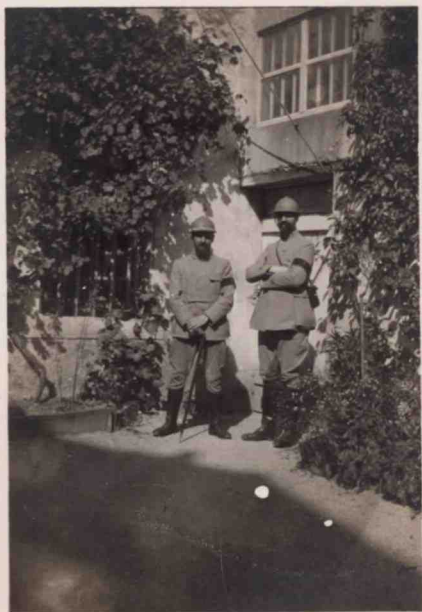
fraser.stlouisfed.org/

al Reserve Bank of St. Louis



Somme  
Sept ~~Oct~~ 1914

watching a  
battle in the  
open



Lorraine

Sept 1907





ized for FRASER

[fraser.stlouisfed.org/](http://fraser.stlouisfed.org/)

ral Reserve Bank of St. Louis

Champagne

Sept 1915

a 75 mm field battery  
in action



Lorraine

Sept 1911



Digitized for FRASER

<http://fraser.stlouisfed.org/>

Federal Reserve Bank of St. Louis

Reverigny

Dec 1915



Digitized for FRASER

Tonno

May 1915

first line trench  
with loop-holes