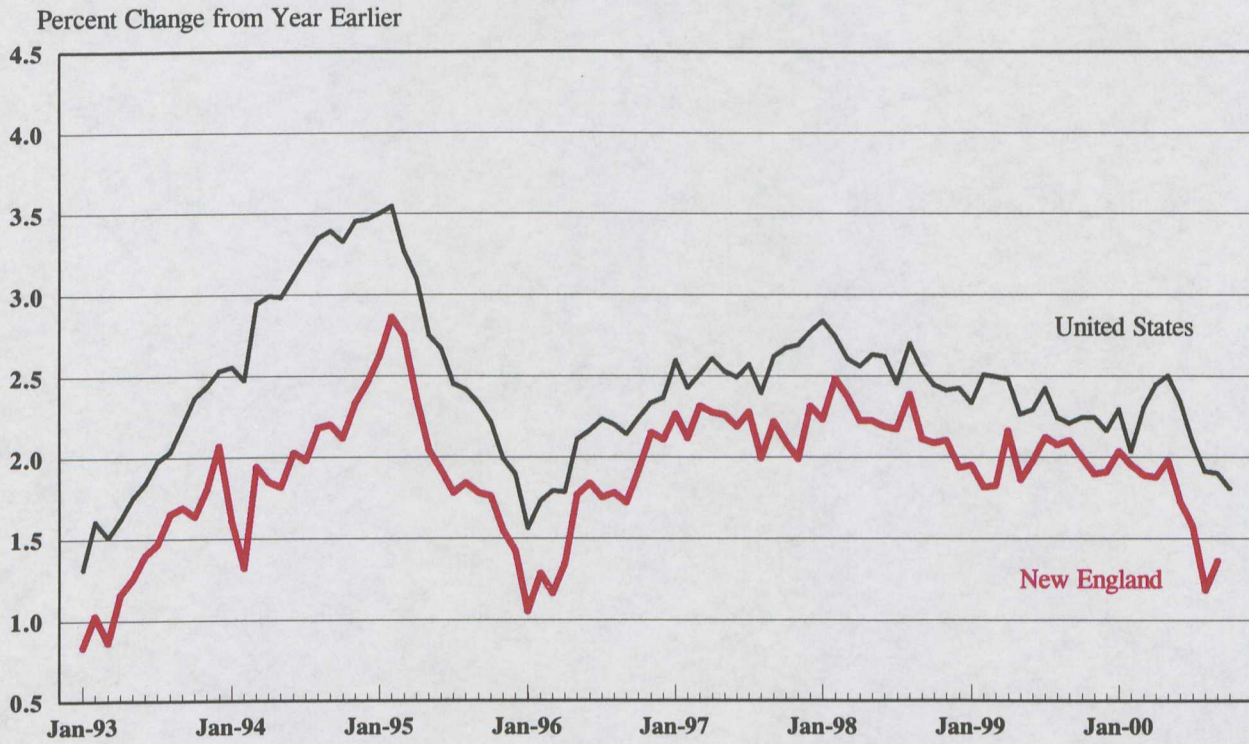


**New England Economic Update**

**Greater Boston Chamber of Commerce**

**Federal Reserve Bank of Boston  
November 8, 2000**

## Employment Growth



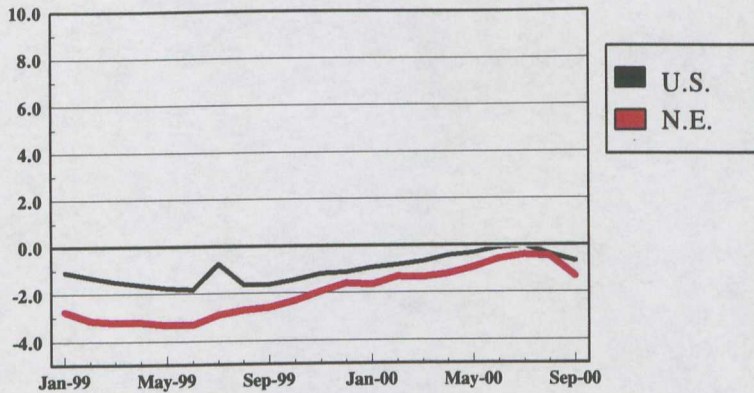
| Employment Growth Rates<br>(percent) |                    |                   |
|--------------------------------------|--------------------|-------------------|
|                                      | Long-term<br>trend | Last 12<br>Months |
| United States                        | 2.1                | 1.8               |
| New England                          | 1.4                | 1.4               |
| Connecticut                          | 1.2                | 1.4               |
| Maine                                | 2.0                | 1.1               |
| Massachusetts                        | 1.3                | 1.4               |
| New Hampshire                        | 3.0                | 1.0               |
| Rhode Island                         | 1.1                | 1.0               |
| Vermont                              | 2.4                | 2.3               |

Note: Long-term trend is average annual employment growth rate from 1970 to 1999; last 12 months ends in October 2000 for the U.S. and September 2000 for New England and the states.

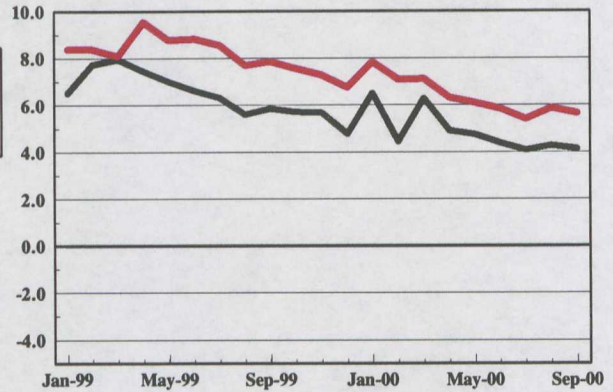
# Employment Growth by Industry

Percent Change from Year Earlier

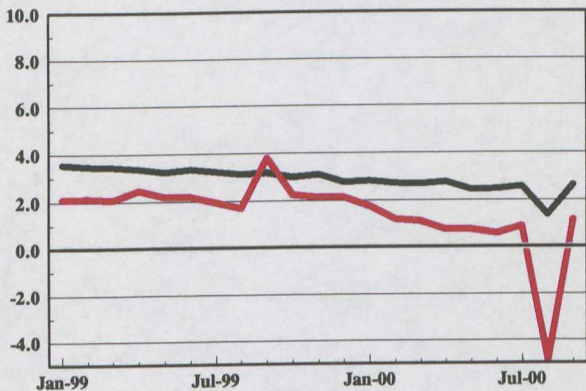
Manufacturing



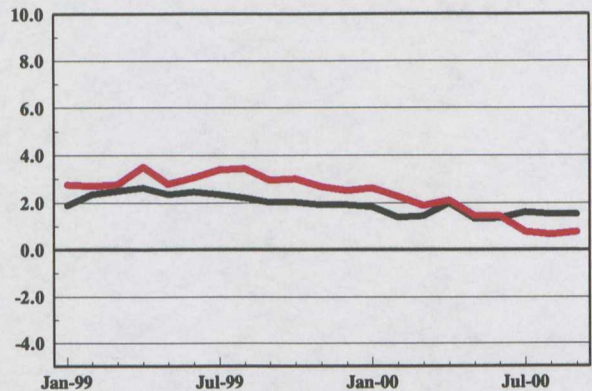
Construction



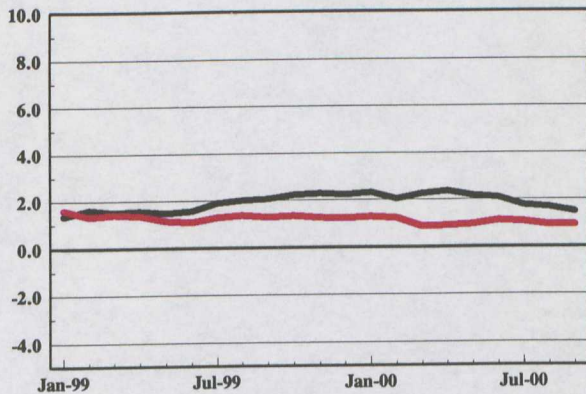
Transportation and Public Utilities



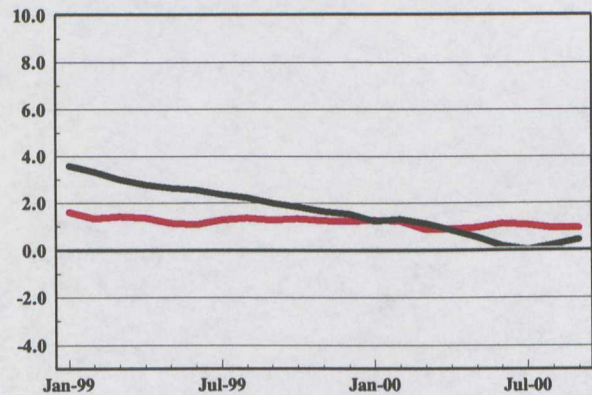
Retail Trade



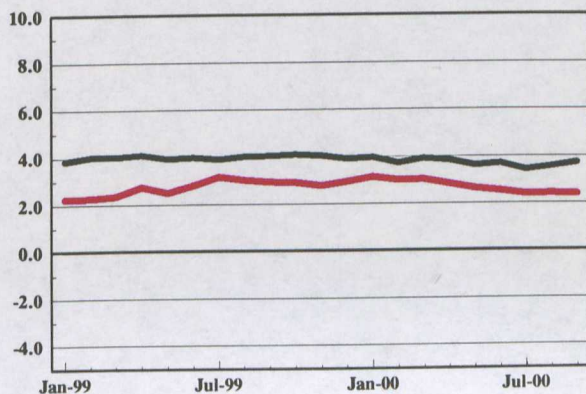
Wholesale Trade



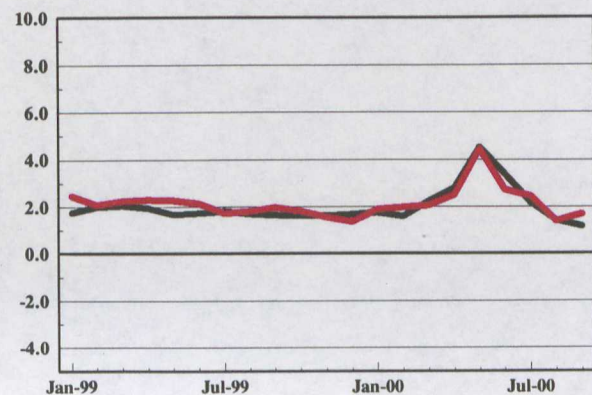
Finance, Insurance, and Real Estate



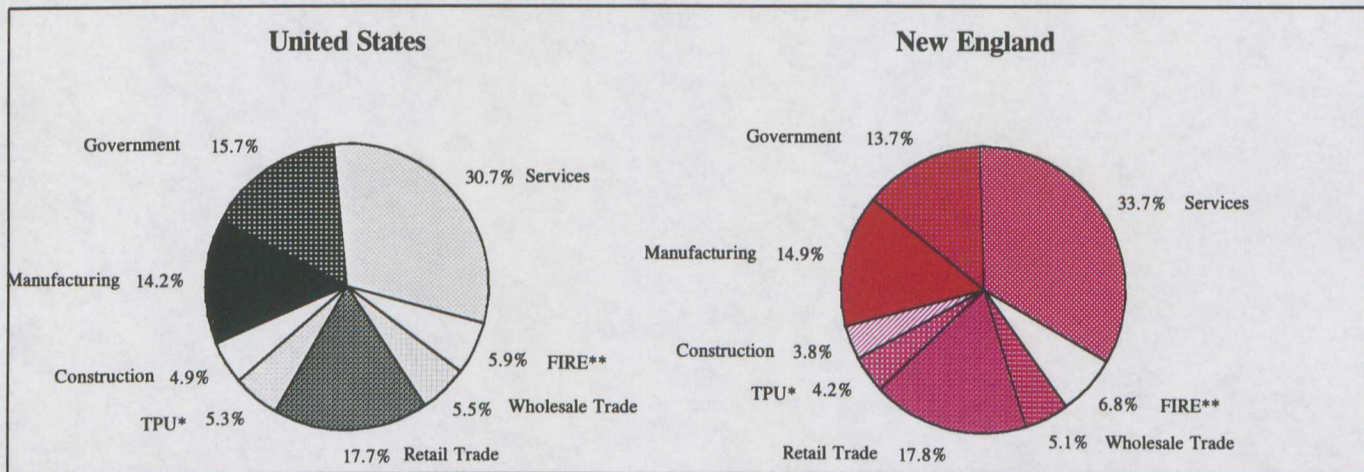
Services



Government



### Industry Mix in the United States and New England, 1999

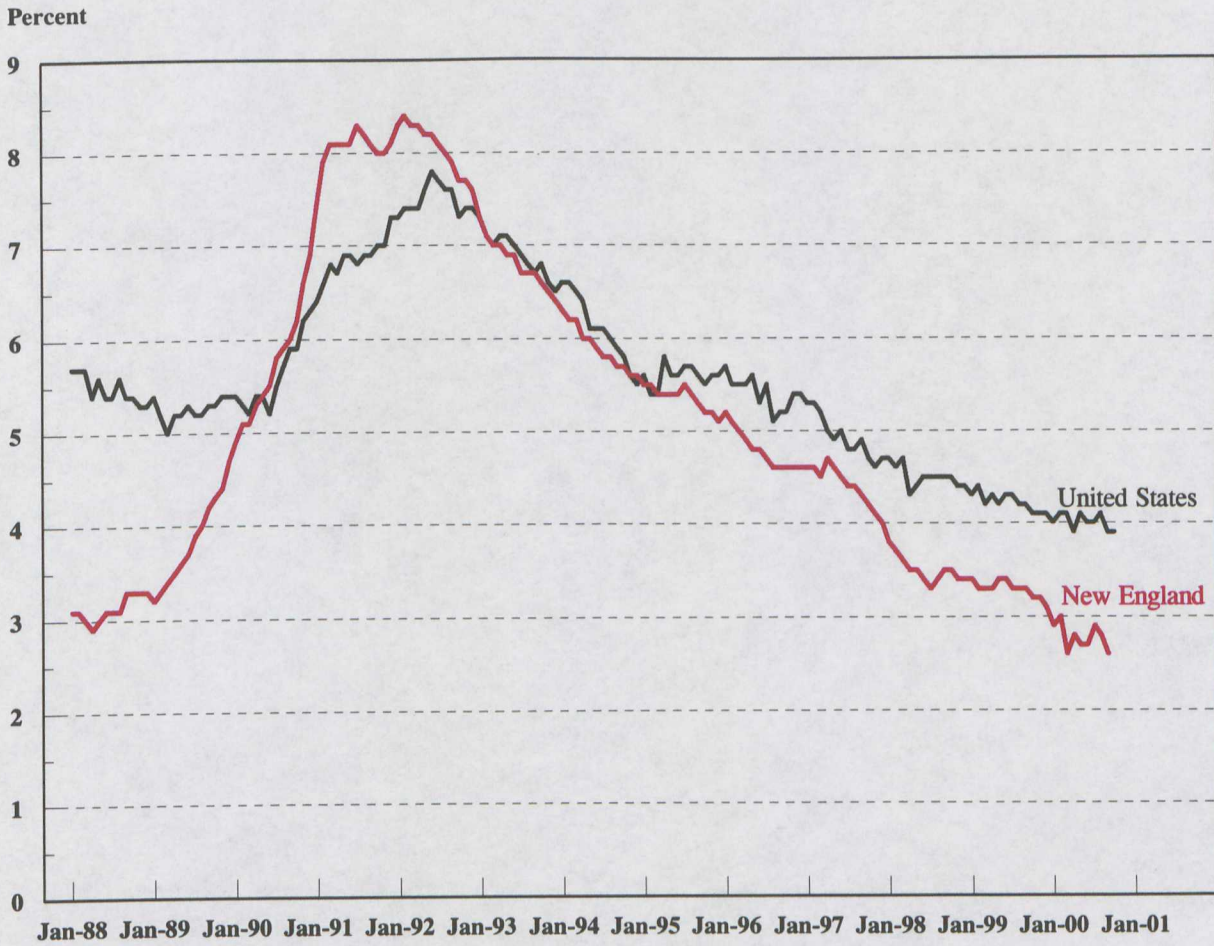


\*\*Finance, Insurance, and Real Estate

\*Transportation and Public Utilities

Source: Bureau of Labor Statistics

### Unemployment Rates



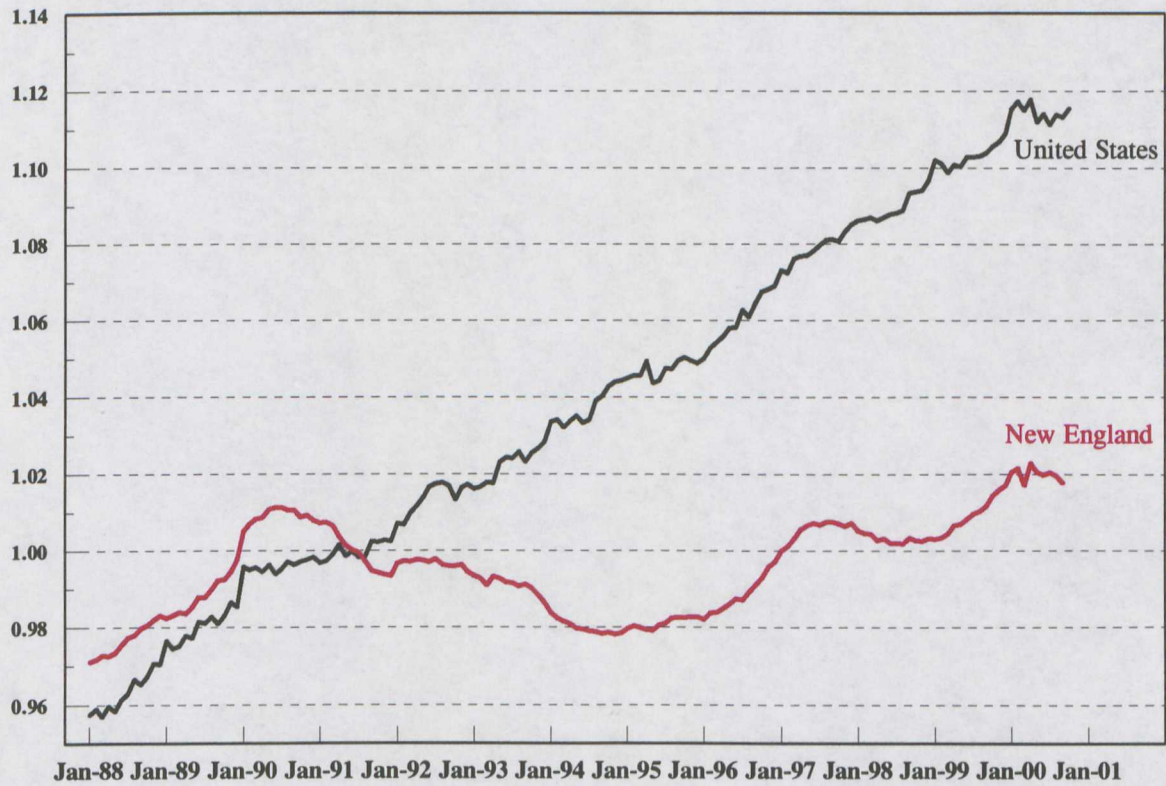
Note: Data beginning January 1994 reflect the redesigned CPS survey and are not strictly comparable to data for 1993 and earlier years.

| Unemployment Rates<br>(percent) |        |        |
|---------------------------------|--------|--------|
|                                 | Sep-00 | Sep-99 |
| United States                   | 3.9*   | 4.2    |
| New England                     | 2.6    | 3.3    |
| Connecticut                     | 2.4    | 3.1    |
| Maine                           | 3.4    | 4.1    |
| Massachusetts                   | 2.4    | 3.2    |
| New Hampshire                   | 2.4    | 2.5    |
| Rhode Island                    | 3.7    | 4.1    |
| Vermont                         | 2.8    | 3.0    |

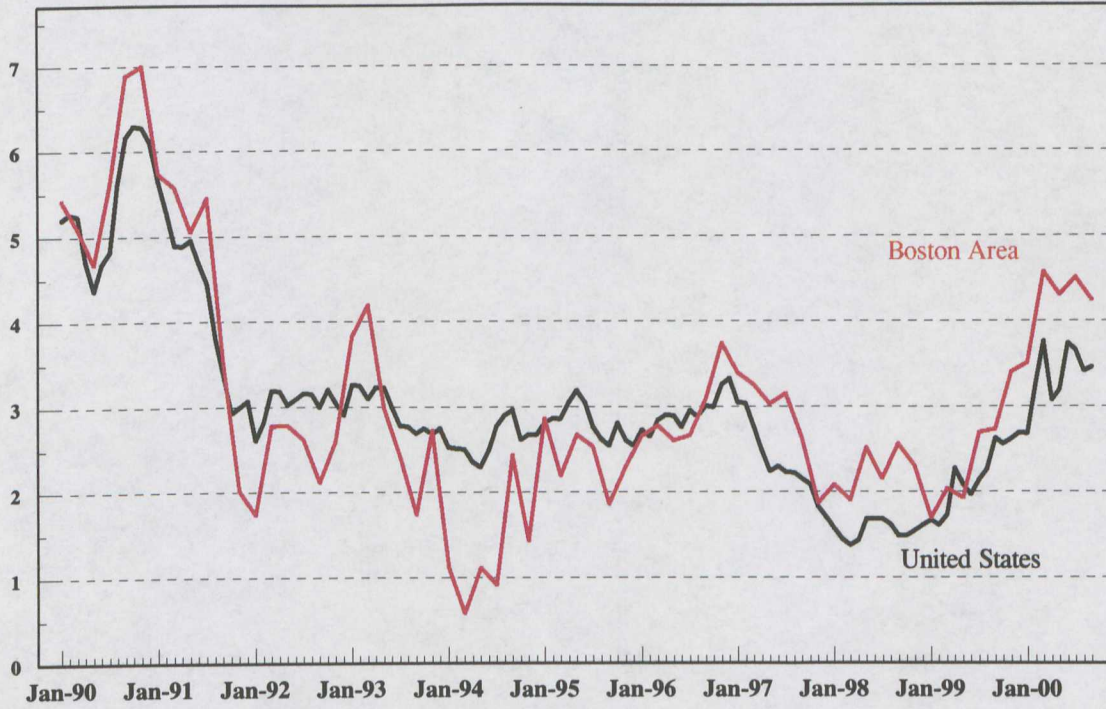
\*U.S. unemployment rate was also 3.9 in Oct-00.

## Civilian Labor Force

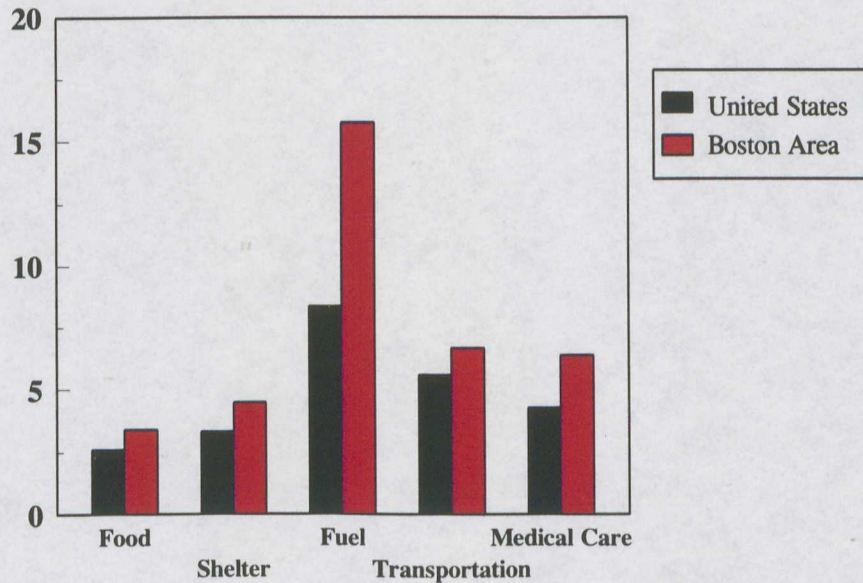
Index, 1991 annual average = 1



**Consumer Price Index**  
Percent Change from Year Earlier

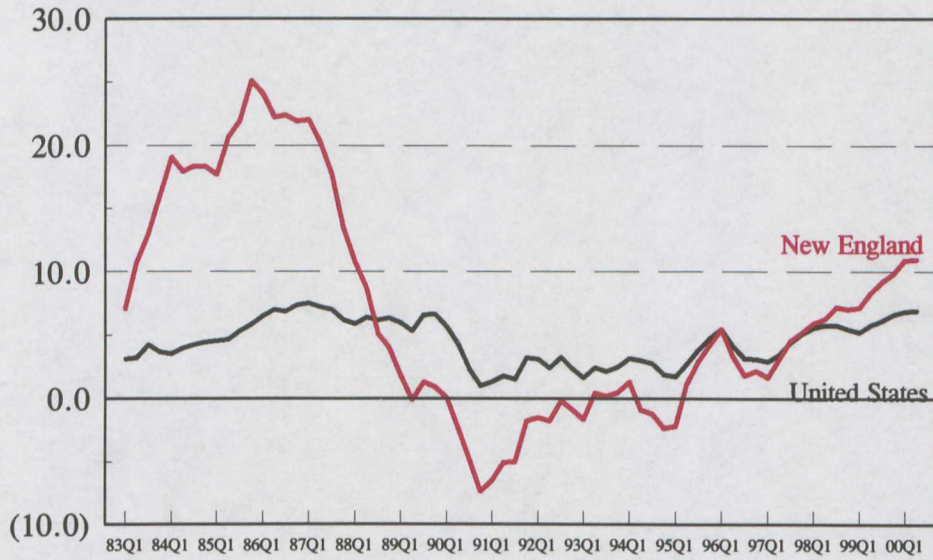


**Components**  
Percent Change from Year Earlier  
May

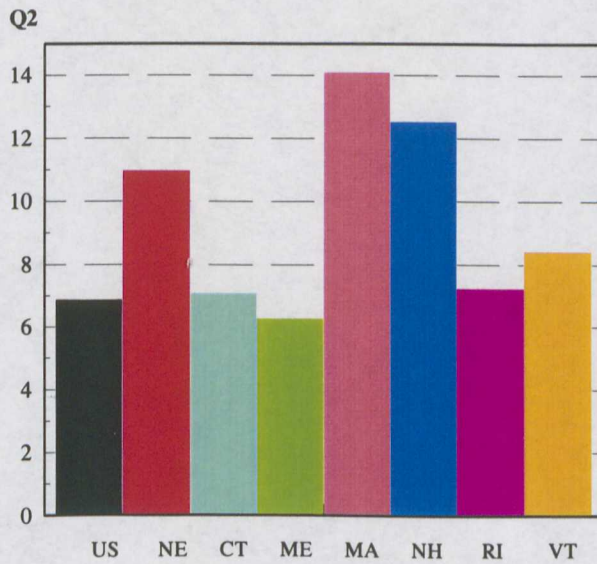


# House Prices

Percent Change from Year Earlier



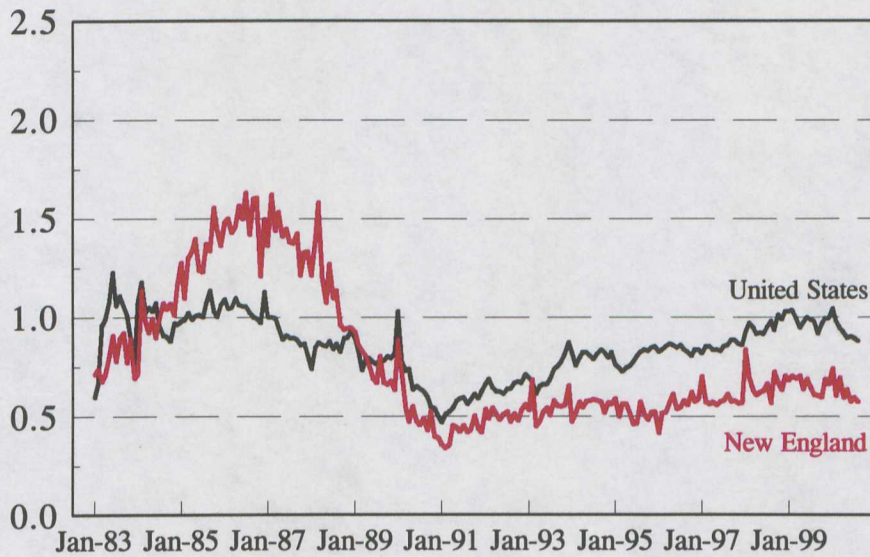
Percent Change from Year Earlier



# Housing Permits Authorized

Index, 1984 annual average = 1

## Total



## Single Unit

