

**Selected Charts**  
to Accompany Remarks by

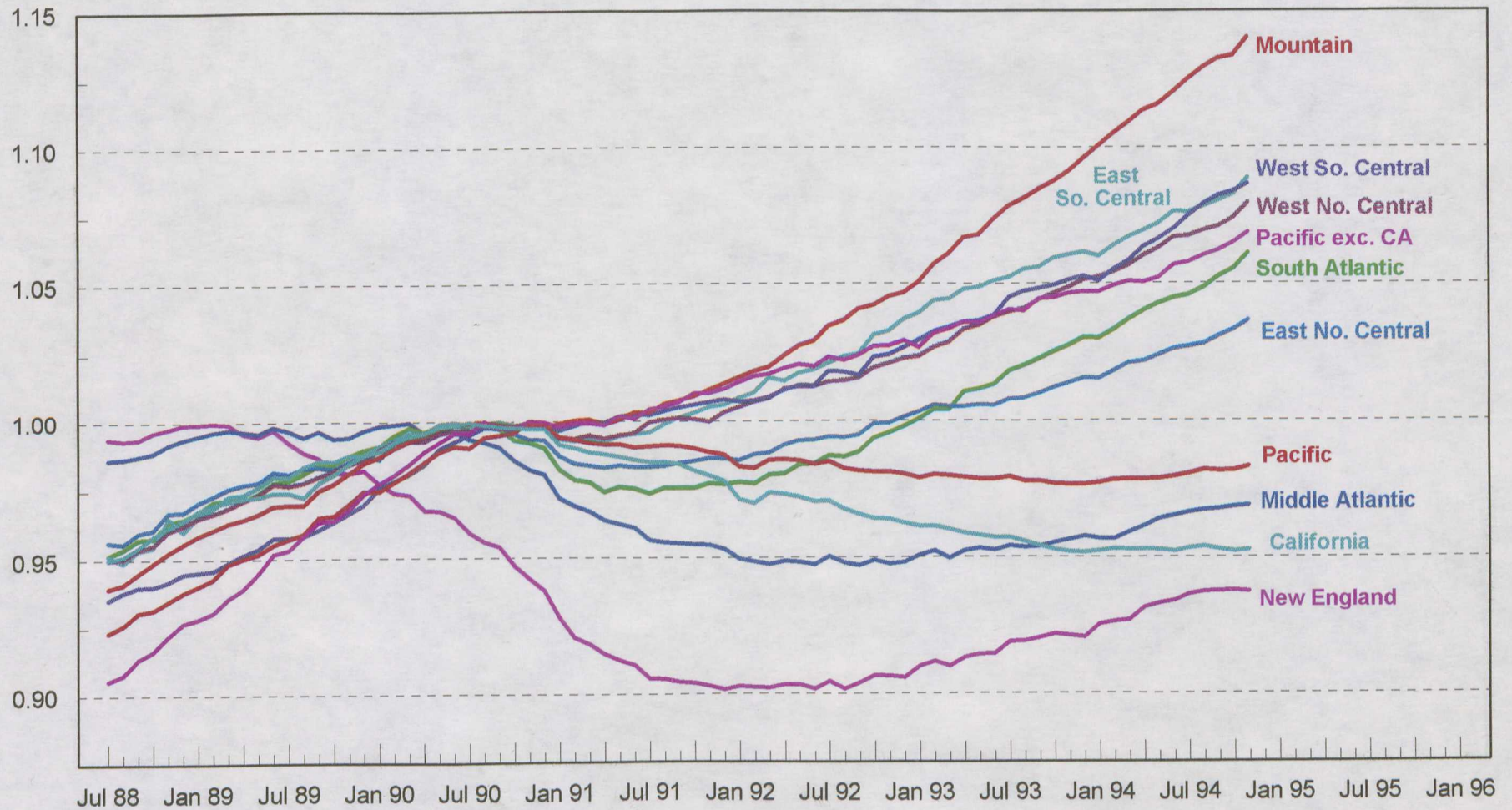
**Cathy E. Minehan**

**January 24, 1995**

# Chart 1

## Nonfarm Payroll Employment by Census Region

Index, Each Region's Employment Peak = 1

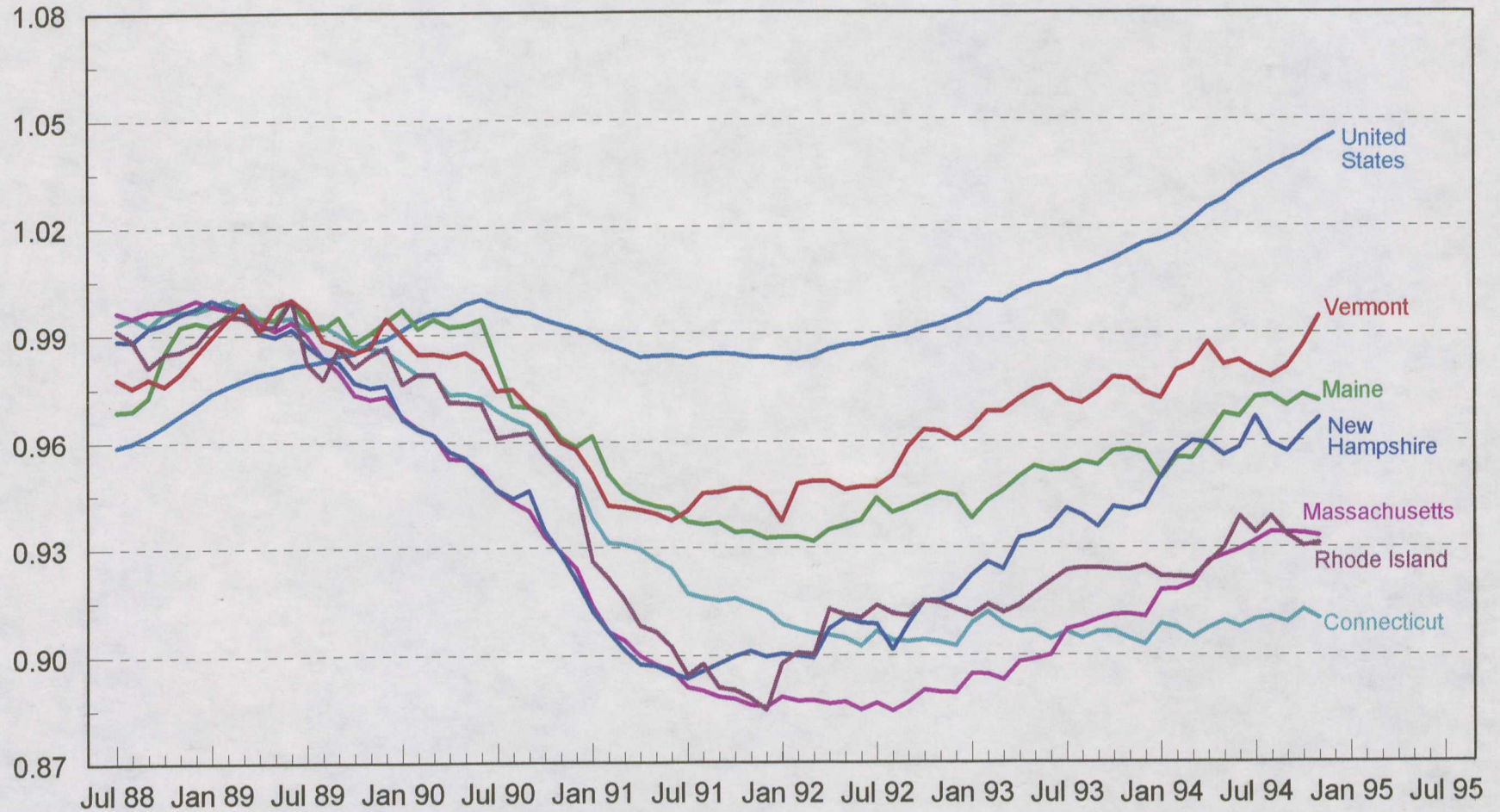


Source: U.S. Bureau of Labor Statistics.

## Chart 2

### Nonfarm Payroll Employment in New England and the United States

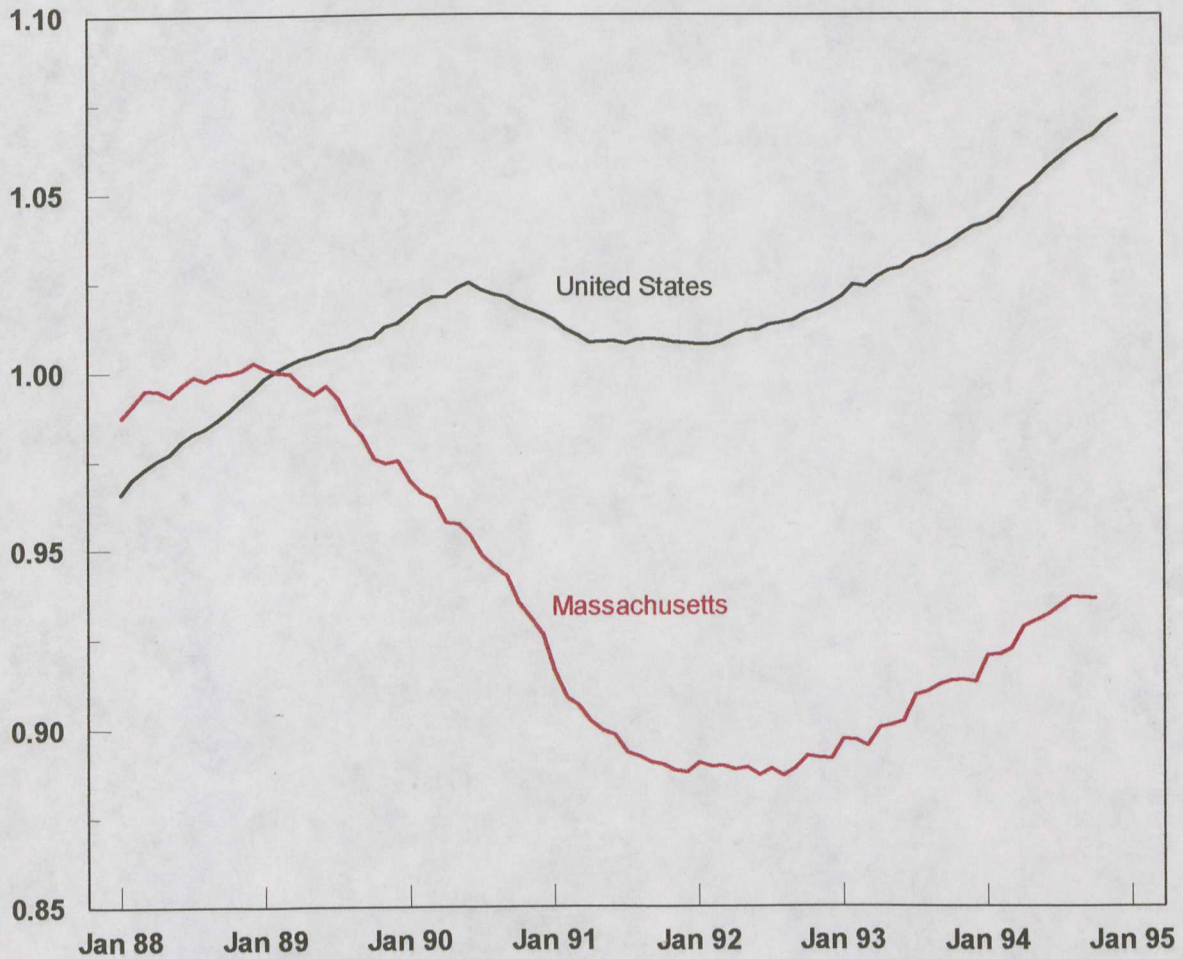
Index, Each State's Employment Peak = 1



Source: U.S. Bureau of Labor Statistics.

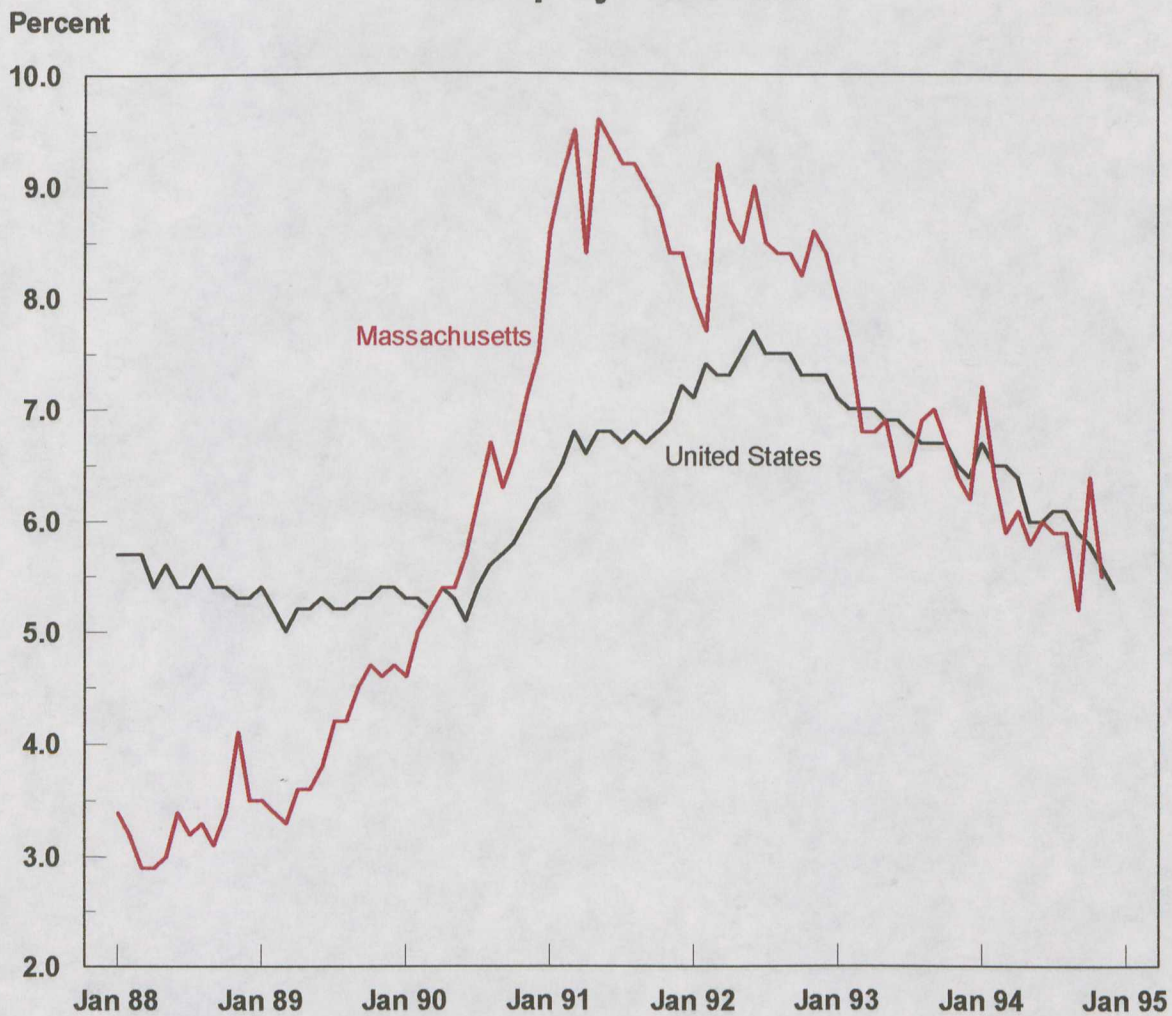
### Chart 3 Nonfarm Payroll Employment

Index, 1989 Q1 = 1



Source: U.S. Bureau of Labor Statistics.

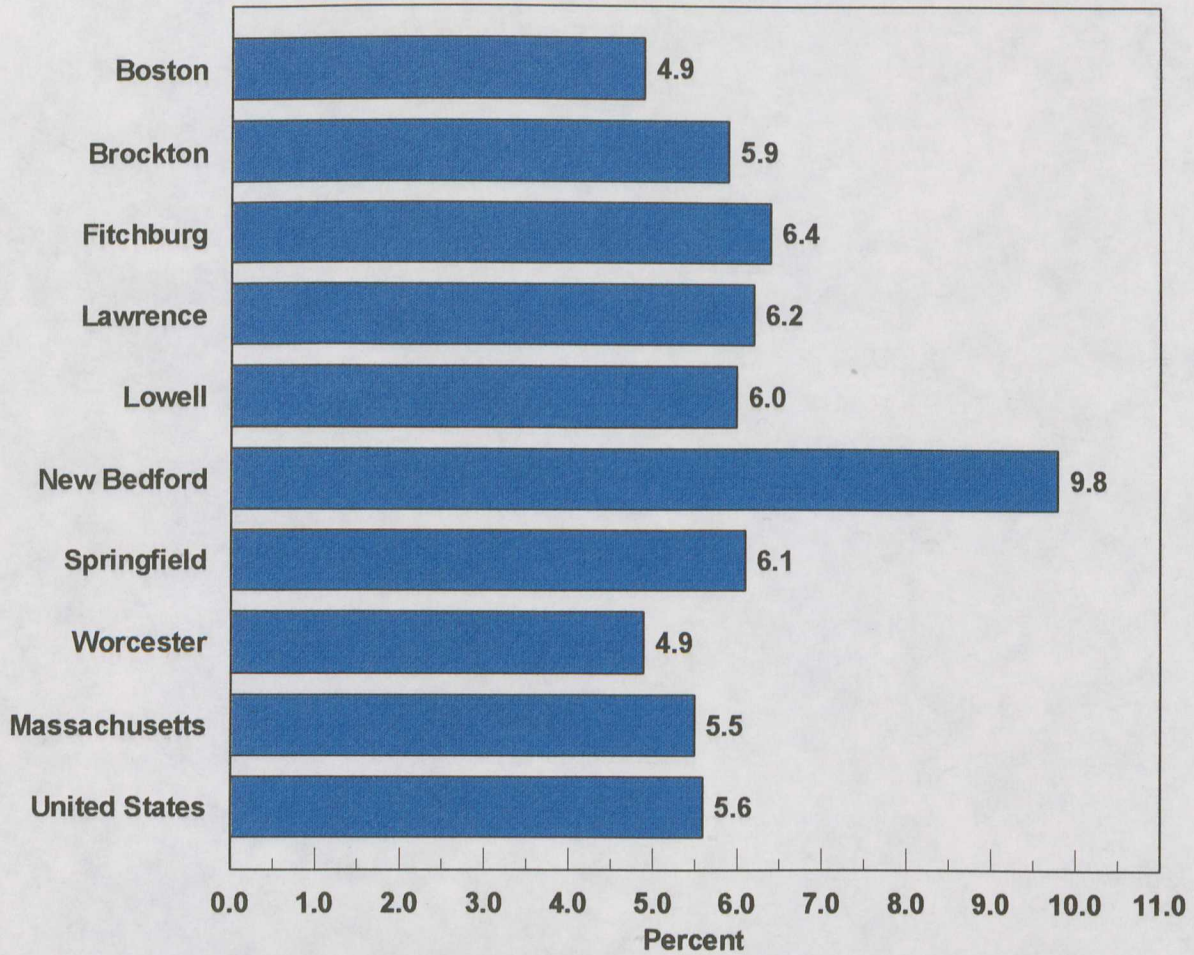
### Chart 4 Unemployment Rate



Note: Data beginning January 1994 reflect the redesigned CPS survey and are not strictly comparable to data for 1993 and earlier years.

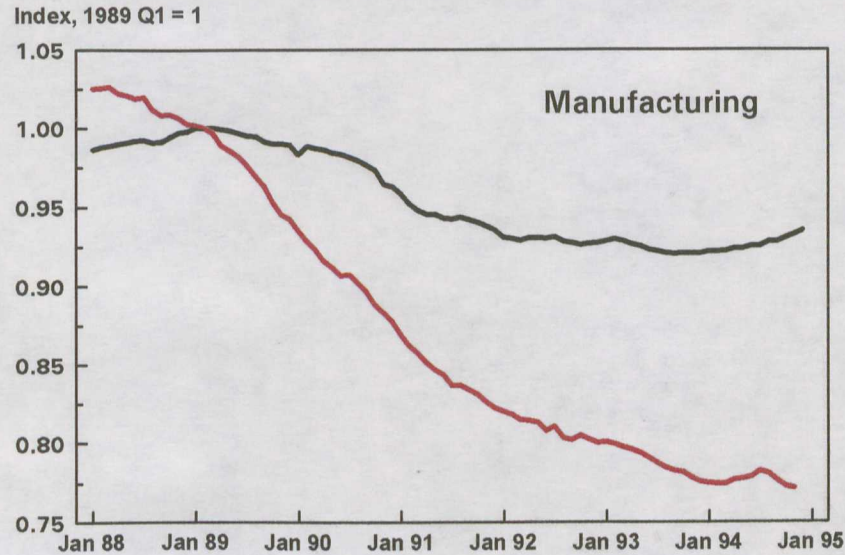
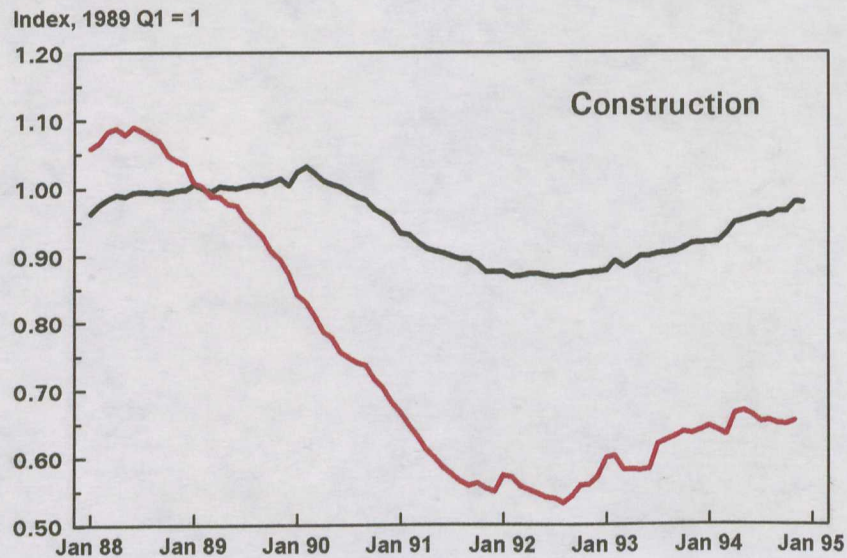
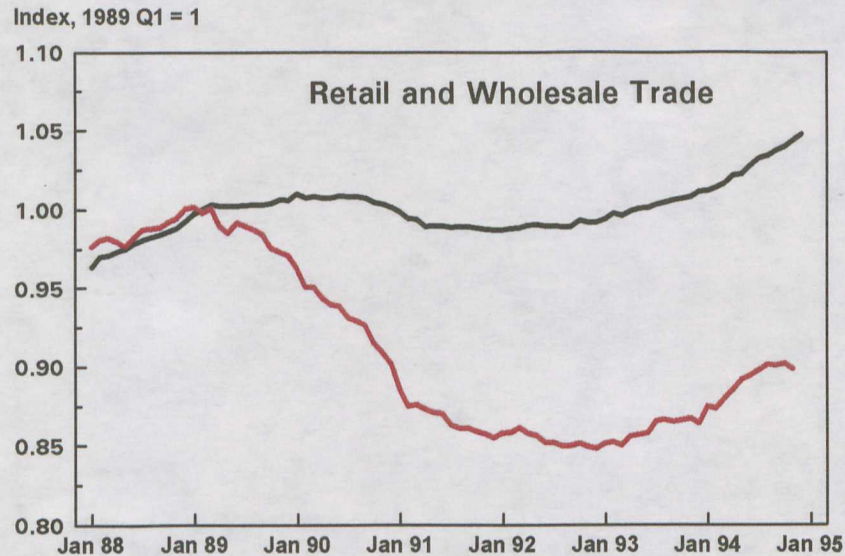
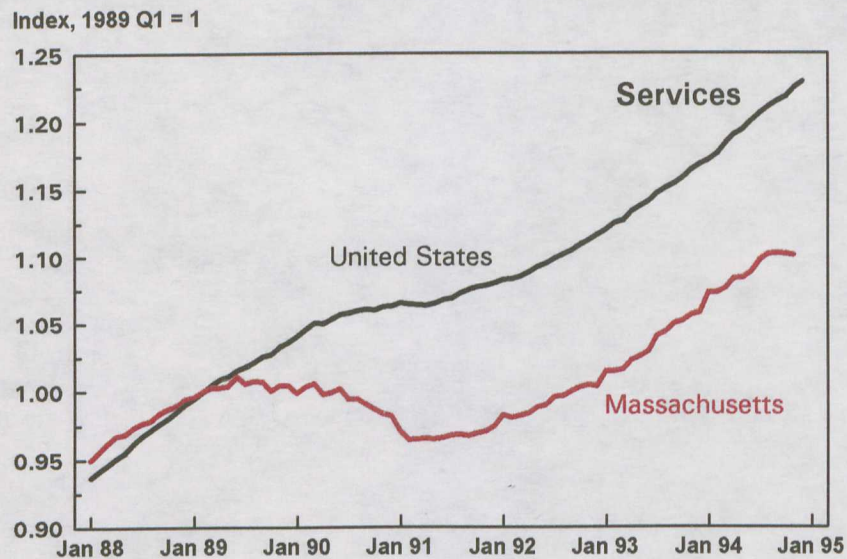
Source: U.S. Bureau of Labor Statistics.

**Chart 5**  
**Unemployment Rates in November 1994**  
Seasonally Adjusted



Source: U.S. Bureau of Labor Statistics and New England Economic Indicators, Federal Reserve Bank of Boston.

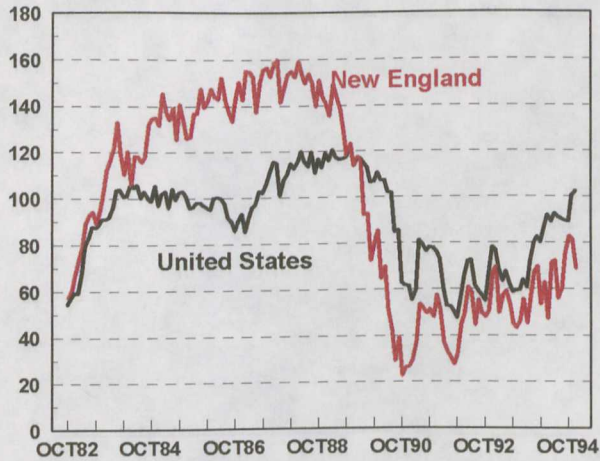
## Chart 6 Sources of Employment Growth by Sector



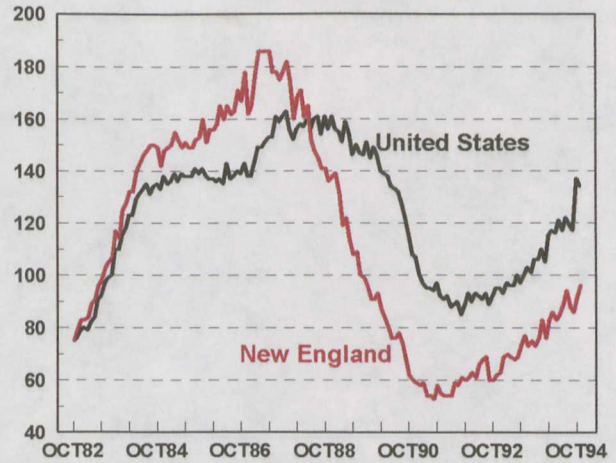
Source: U.S. Bureau of Labor Statistics.

# Chart 7 Current Economic Indicators

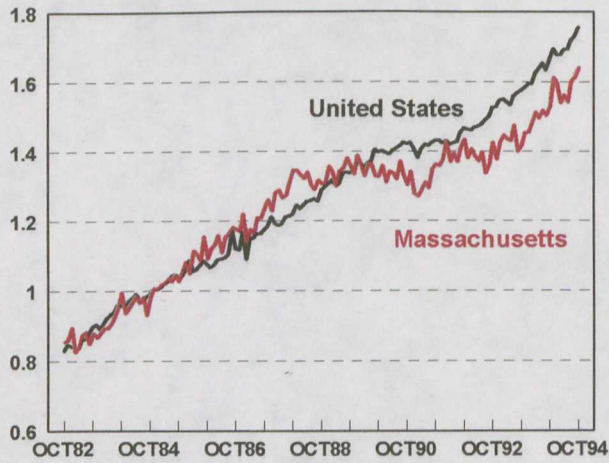
**Consumer Confidence**  
(Index 1985 = 100)



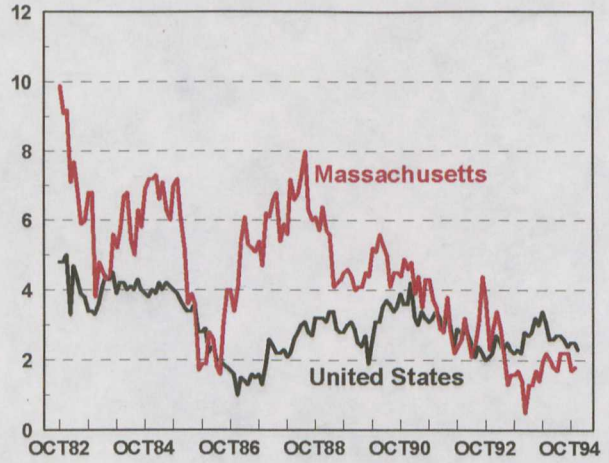
**Help Wanted Advertising**  
(Index 1967 = 100)



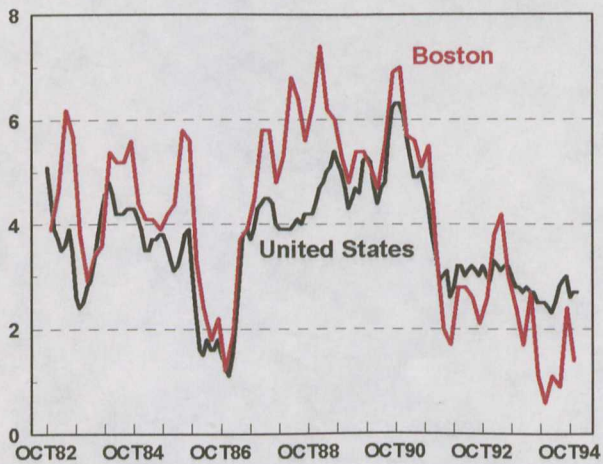
**Retail Sales**  
(Index 1984Q4 = 100)



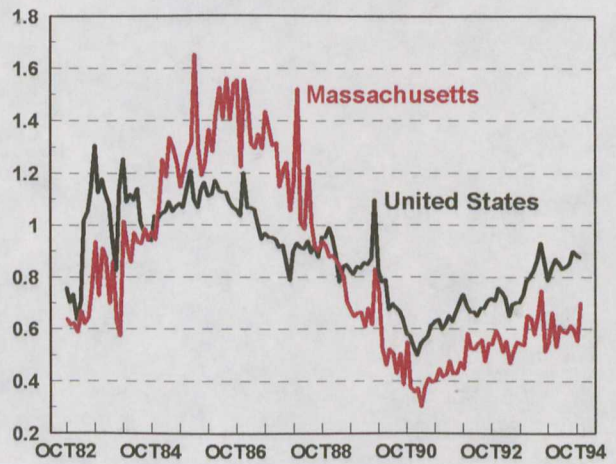
**Average Hourly Earnings**  
Percent Change from a Year Earlier



**Consumer Price Index**  
Percent Change from a Year Earlier

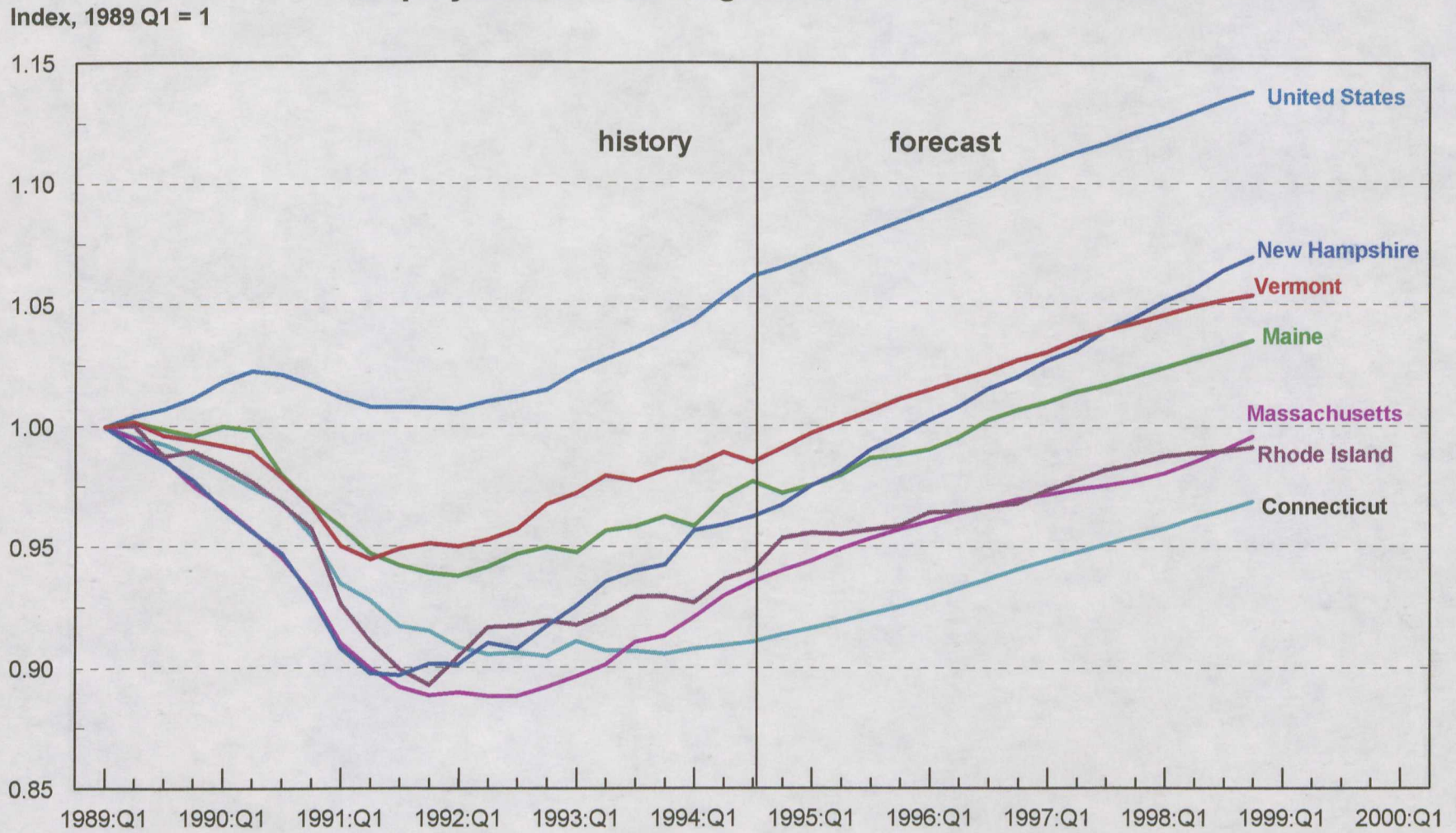


**Housing Permits Authorized**  
(Index 1984Q4 = 1)



Source: New England Economic Indicators, Federal Reserve Bank of Boston.

**Chart 8**  
**New England Economic Project Forecast**  
**Employment in New England and the United States**



Source: New England Economic Project and U.S. Bureau of Labor Statistics.