

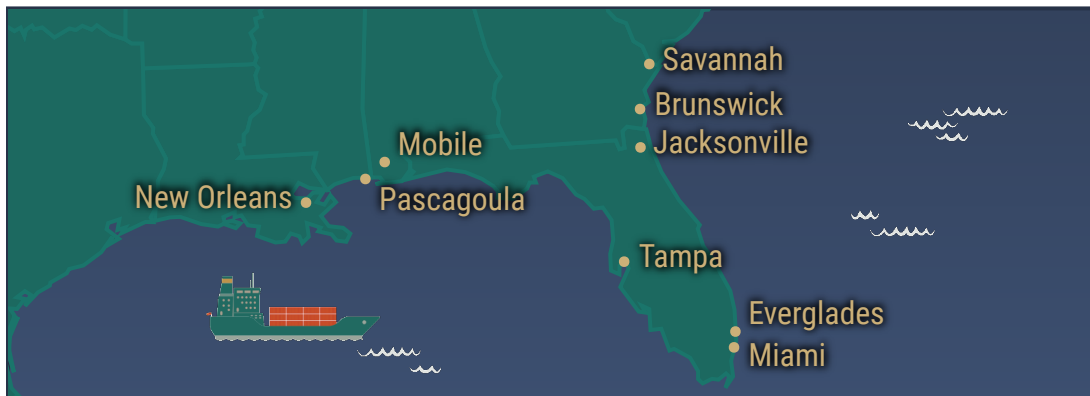
Ports and the Southeast: Delivering the Goods

The Southeast, with its long and accessible coastline, is home to some of the nation's busiest ports. *Economy Matters* takes you on a tour of nine of the region's biggest.

March 23, 2017

Seaborne commerce has been a linchpin of the southeastern economy for centuries. Today, the region's ports remain indispensable to the U.S. economy, serving as major conduits for all manner of imports and exports. Everything from ammonia to autos passes into and out of these ports, generating thousands of jobs and billions of dollars in economic impact. In this feature, you can observe their impressive diversity of purpose and their significance to economies the world over.

Click on a port city on the map below to view information about that port.



View details for: [Jacksonville](#) • [Mobile](#) • [Miami](#) • [Tampa](#) • [Savannah](#) • [Brunswick](#) • [New Orleans](#) • [Pascagoula](#) • [Everglades](#)

Research by Sarah Arteaga, Regional Economic Information director at the Atlanta Fed's Jacksonville Branch. Graphic design by Peter Hamilton and data visualization by Mike Zavarello, both in the Atlanta Fed's public affairs department.

Ports and the Southeast: Delivering the Goods

The Southeast, with its long and accessible coastline, is home to some of the nation's busiest ports. *Economy Matters* takes you on a tour of nine of the region's biggest.

March 23, 2017

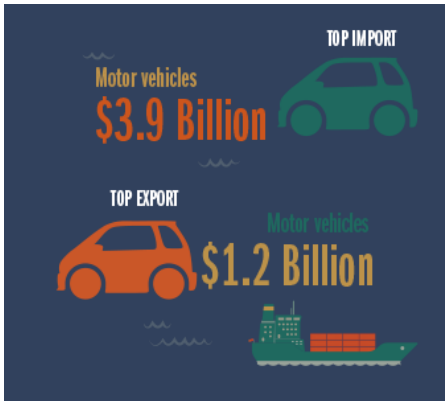
Seaborne commerce has been a linchpin of the southeastern economy for centuries. Today, the region's ports remain indispensable to the U.S. economy, serving as major conduits for all manner of imports and exports. Everything from ammonia to autos passes into and out of these ports, generating thousands of jobs and billions of dollars in economic impact. In this feature, you can observe their impressive diversity of purpose and their significance to economies the world over.

Click on a port city on the map below to view information about that port.

JACKSONVILLE



Photo courtesy of the Port of Jacksonville



PORT FACTS: Jacksonville

- The Port of Jacksonville is the top U.S. port handling trade with Puerto Rico.
- Disney uses the Port of Jacksonville to import most of the merchandise headed to its central Florida theme parks.
- In 2015, the Port of Jacksonville imported 9,126 metric tons of rice, or more than 586 billion grains of rice.

	Top Exports	Top Imports	Top Trading Partners
Import Vessel Value	Export Vessel Value	Import Vessel Shipping Weight	Export Vessel Shipping Weight

MOBILE

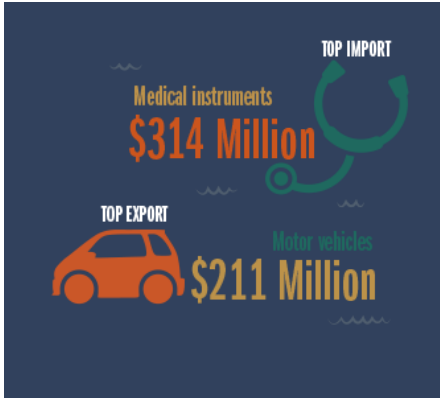


PORT FACTS: Mobile

- The Port of Mobile supports 124,328 direct and indirect jobs.
- The port is Alabama's only deepwater port.
- You can travel by boat from the Port of Mobile to the Great Lakes—1,500 miles—using only inland waterways.

	Top Exports	Top Imports	Top Trading Partners
Import Vessel Value	Export Vessel Value	Import Vessel Shipping Weight	Export Vessel Shipping Weight

MIAMI



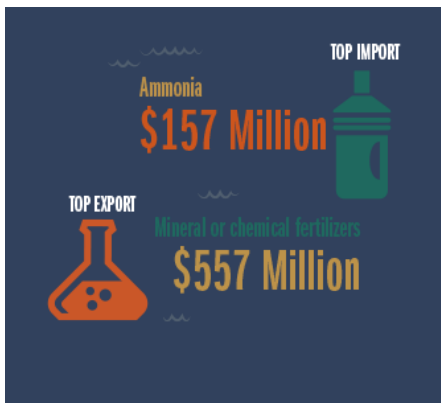
PORT FACTS: Miami

- The Port of Miami contributes \$28 billion annually to the local economy and supports more than 207,000 jobs in South Florida.
- The port serves more than 4.9 million cruise passengers annually.
- Annually, the port handles more than 1 million TEUs (twenty-foot equivalent units, a common metric for cargo containers).

Import Vessel Value	Export Vessel Value	Import Vessel Shipping Weight	Export Vessel Shipping Weight
Top Exports	Top Imports	Top Trading Partners	

TAMPA





PORT FACTS: Tampa

- The port is Florida's top one in terms of cargo tonnage, handling nearly half of all the seaborne commerce passing through the Sunshine State.
- The port is among the nation's top 10 for cruise ships.
- The port is one of the nation's largest in land area.

Top Exports

Top Imports

Top Trading Partners

Import Vessel Value

Export Vessel Value

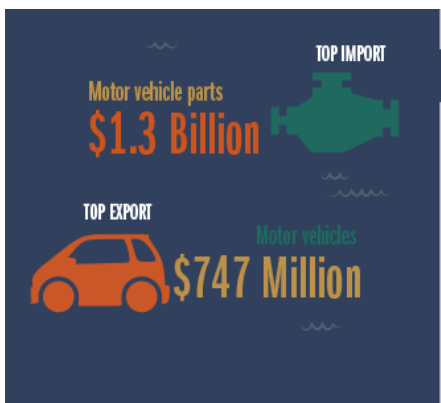
Import Vessel Shipping Weight

Export Vessel Shipping Weight

SAVANNAH



Photo courtesy of the Port of Savannah



PORT FACTS: Savannah

- The Port of Savannah generates \$20.4 billion in income (or 5.3 percent of Georgia's total personal income).
- The Port of Savannah supports 369,193 full- and part-time jobs (or 8.4 percent of Georgia's total employment);
- Annually, the Port of Savannah generates \$1.3 billion in state taxes and \$1 billion in local taxes.

Top Exports

Top Imports

Top Trading Partners

Import Vessel Value

Export Vessel Value

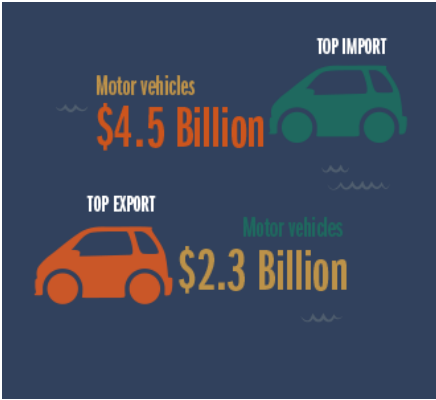
Import Vessel Shipping Weight

Export Vessel Shipping Weight

BRUNSWICK



Photo courtesy of the Port of Brunswick



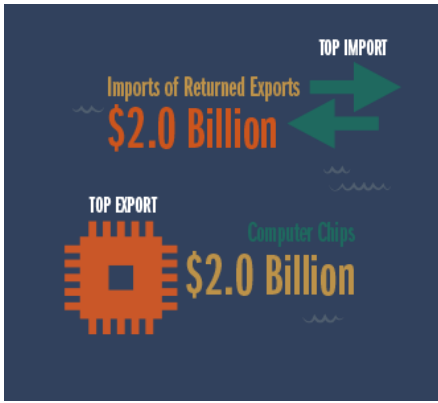
PORT FACTS: Brunswick

- The Port Brunswick is the nation's top port for new auto imports.
- More than 12 automakers use one of Brunswick's three deepwater terminals.
- The Port of Brunswick is the East Coast's second-largest grain facility.

	Top Exports	Top Imports	Top Trading Partners	
Import Vessel Value	Export Vessel Value	Import Vessel Shipping Weight	Export Vessel Shipping Weight	

NEW ORLEANS





PORT FACTS: New Orleans

- The port is at the mouth of the lower Mississippi River, the world's busiest waterway.
- Of the nation's grain, 60 percent of it moves on the lower Mississippi River.
- One-fifth of the nation's coal and petrochemicals travel on the lower Mississippi River.

	Top Exports	Top Imports	Top Trading Partners
Import Vessel Value	Export Vessel Value	Import Vessel Shipping Weight	Export Vessel Shipping Weight

PASCAGOULA



Photo courtesy of the Port of Pascagoula



PORT FACTS: Pascagoula

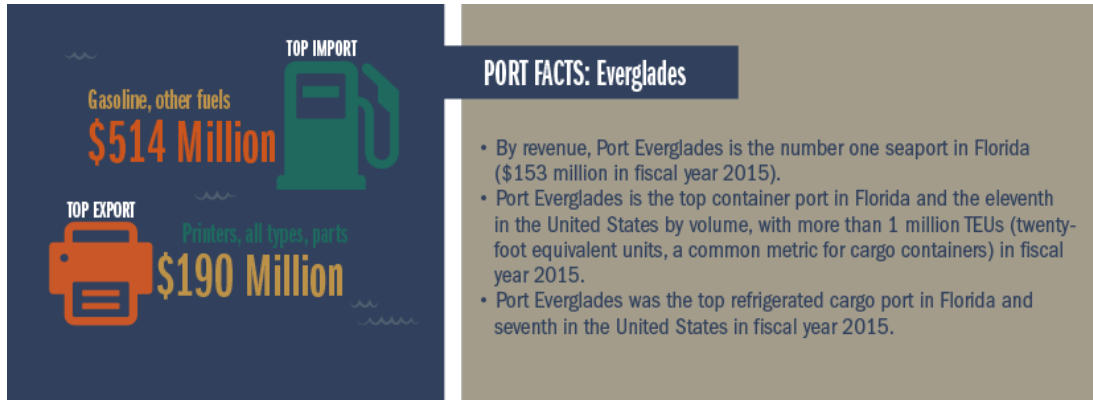
- The Port of Pascagoula's two harbors include a combination of public and private terminals handling more than 32 million tons of cargo through the channel annually.
- The port is Mississippi's largest and ranks in the top 20 nationally in foreign cargo volume.
- Operations associated with the port are responsible for 19,370 direct jobs, \$902 million in personal income, \$393 million in spending, \$50 million in state tax revenue, and \$27 million in tax revenues to Jackson County.

	Top Exports	Top Imports	Top Trading Partners
Import Vessel Value	Export Vessel Value	Import Vessel Shipping Weight	Export Vessel Shipping Weight

EVERGLADES



Photo courtesy of the Port of Everglades



Top Exports		Top Imports		Top Trading Partners	
Import Vessel Value	Export Vessel Value	Import Vessel Shipping Weight	Export Vessel Shipping Weight		

View details for: [Jacksonville](#) • [Mobile](#) • [Miami](#) • [Tampa](#) • [Savannah](#) • [Brunswick](#) • [New Orleans](#) • [Pascagoula](#) • [Everglades](#)

Research by Sarah Arteaga, Regional Economic Information director at the Atlanta Fed's Jacksonville Branch. Graphic design by Peter Hamilton and data visualization by Mike Zavarello, both in the Atlanta Fed's public affairs department.