

Peak

Forecast Peak MW

Fcst yr:	2005			
	NPC	SPPC	Total	2% Diveristy
2005	5,128	1,715	6,843	
2006	5,298	1,617	6,915	
2007	5,487	1,699	7,186	
2008	5,685	1,721	7,406	
2009	5,873	1,762	7,635	
2010	6,026	1,800	7,826	
2011	6,177	1,841	8,018	
2012	6,332	1,881	8,213	
2013	6,481	1,908	8,389	
2014	6,606	1,949	8,555	
2015	6,737	1,997	8,734	
2016	6,868	2,042	8,910	
2017	6,982	2,085	9,067	
2018	7,086	2,126	9,212	
2019	7,195	2,184	9,379	
2020	7,302	2,230	9,532	

Fcst yr:	2006			
	NPC	SPPC	Total	2% Diveristy
2005	0	0	0	
2006	5,399	1,619	7,018	
2007	5,619	1,632	7,251	
2008	5,862	1,688	7,550	
2009	6,117	1,739	7,856	
2010	6,335	1,753	8,088	
2011	6,498	1,777	8,275	
2012	6,705	1,821	8,526	
2013	6,810	1,835	8,645	
2014	7,000	1,858	8,858	
2015	7,181	1,919	9,100	
2016	7,371	1,949	9,320	
2017	7,530	1,961	9,491	
2018	7,690	2,017	9,707	
2019	7,830	2,048	9,878	
2020	7,984	2,093	10,077	

Peak

Fcst yr: **2007**

Year	NPC	SPPC	Total	2% Diveristy
2005	0	0	0	
2006	0	0	0	
2007	5,751	1,666	7,417	
2008	5,965	1,641	7,606	
2009	6,212	1,685	7,897	
2010	6,441	1,712	8,153	
2011	6,613	1,731	8,344	
2012	6,820	1,760	8,580	
2013	6,902	1,782	8,684	
2014	7,077	1,809	8,886	
2015	7,237	1,846	9,083	
2016	7,391	1,875	9,266	
2017	7,480	1,882	9,362	
2018	7,657	1,914	9,571	
2019	7,782	1,939	9,721	
2020	7,903	1,982	9,885	

Fcst yr: **2008**

Year	NPC	SPPC	Total	2% Diveristy
2005	0	0	0	
2006	0	0	0	
2007	0	0	0	
2008	5,959	1,642	7,601	
2009	6,199	1,725	7,924	
2010	6,435	1,777	8,212	
2011	6,652	1,806	8,458	
2012	6,840	1,839	8,679	
2013	7,009	1,850	8,859	
2014	7,196	1,880	9,076	
2015	7,382	1,885	9,267	
2016	7,558	1,891	9,449	
2017	7,729	1,918	9,647	
2018	7,892	1,955	9,847	
2019	8,038	1,985	10,023	
2020	8,170	2,014	10,184	

Peak

Fcst yr: **2009 (January)**

Year	NPC	SPPC	Total	2% Diveristy
2005	0	0	0	
2006	0	0	0	
2007	0	0	0	
2008	0	0	0	
2009	5,803	1,620	7,423	
2010	5,843	1,629	7,472	
2011	5,903	1,653	7,556	
2012	6,073	1,670	7,743	
2013	6,175	1,672	7,847	
2014	6,298	1,689	7,987	
2015	6,441	1,705	8,146	
2016	6,559	1,720	8,279	
2017	6,710	1,761	8,471	
2018	6,899	1,789	8,688	
2019	7,064	1,816	8,880	
2020	7,216	1,842	9,058	

Fcst yr: **2009 (August/Sep.)**

Year	NPC	SPPC	Total	2% Diveristy
2005	0	0	0	
2006	0	0	0	
2007	0	0	0	
2008	0	0	0	
2009	0	0	0	
2010	5,655	1,572	7,227	
2011	5,647	1,563	7,210	
2012	5,692	1,584	7,276	
2013	5,773	1,595	7,368	
2014	5,872	1,609	7,481	
2015	5,975	1,623	7,598	
2016	6,068	1,632	7,700	
2017	6,155	1,645	7,800	
2018	6,233	1,682	7,915	
2019	6,310	1,704	8,014	
2020	6,428	1,727	8,155	

Peak

Fcst yr: **2010 as of 8/23/10**

Year	NPC	SPPC	Total	2% Diveristy
2005	0	0	0	
2006	0	0	0	
2007	0	0	0	
2008	0	0	0	
2009	0	0	0	
2010	5,565	1,578	7,143	
2011	5,503	1,575	7,078	
2012	5,466	1,592	7,058	
2013	5,447	1,595	7,042	
2014	5,500	1,596	7,096	
2015	5,537	1,599	7,136	
2016	5,582	1,609	7,191	
2017	5,625	1,609	7,234	
2018	5,670	1,634	7,304	
2019	5,723	1,651	7,374	
2020	5,782	1,670	7,452	

Fcst yr: **Actual**

Year	NPC	SPPC	Total	2% Diveristy
2005	5,563	1,740	7,303	
2006	5,623	1,701	7,324	
2007	5,866	1,743	7,609	
2008	5,504	1,648	7,152	
2009	5,586	1,554	7,140	
2010	5,604	1,616	7,220	
2011				
2012				
2013				
2014				
2015				
2016				
2017				
2018				
2019				
2020				

Fcst yr:

	Weather Adjusted			
				2%
Year	NPC	SPPC	Total	Diveristy
2005	5,234	1,694	6,928	
2006	5,568	1,657	7,225	
2007	5,657	1,677	7,334	
2008	5,724	1,674	7,398	
2009	5,485	1,566	7,051	
2010	5,515	1,618	7,133	
2011				
2012				
2013				
2014				
2015				
2016				
2017				
2018				
2019				
2020				

Graphs

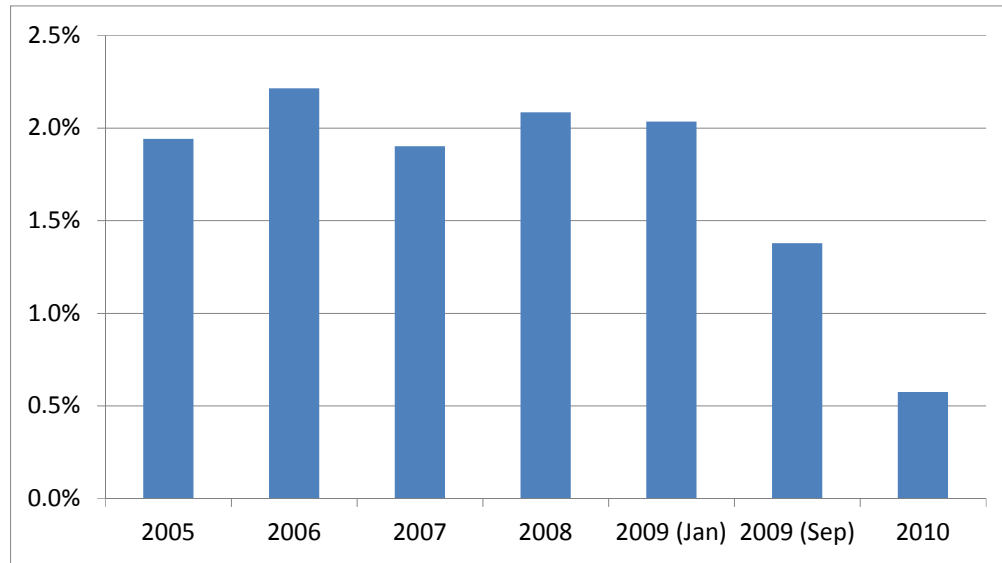
Year	2005	2006	2007	2008	2009 (Jan)	2009 (Sep)	2010	Actual	WN
2005	6,843							7,303	6,928
2006	6,915	7,018						7,324	7,225
2007	7,186	7,251	7,417					7,609	7,334
2008	7,406	7,550	7,606	7,601				7,152	7,398
2009	7,635	7,856	7,897	7,924	7,423			7,140	7,051
2010	7,826	8,088	8,153	8,212	7,472	7,227	7,143	7,220	7,133
2011	8,018	8,275	8,344	8,458	7,556	7,210	7,078		
2012	8,213	8,526	8,580	8,679	7,743	7,276	7,058		
2013	8,389	8,645	8,684	8,859	7,847	7,368	7,042		
2014	8,555	8,858	8,886	9,076	7,987	7,481	7,096		
2015	8,734	9,100	9,083	9,267	8,146	7,598	7,136		
2016	8,910	9,320	9,266	9,449	8,279	7,700	7,191		
2017	9,067	9,491	9,362	9,647	8,471	7,800	7,234		
2018	9,212	9,707	9,571	9,847	8,688	7,915	7,304		
2019	9,379	9,878	9,721	10,023	8,880	8,014	7,374		
2020	9,532	10,077	9,885	10,184	9,058	8,155	7,452		

Percent growth

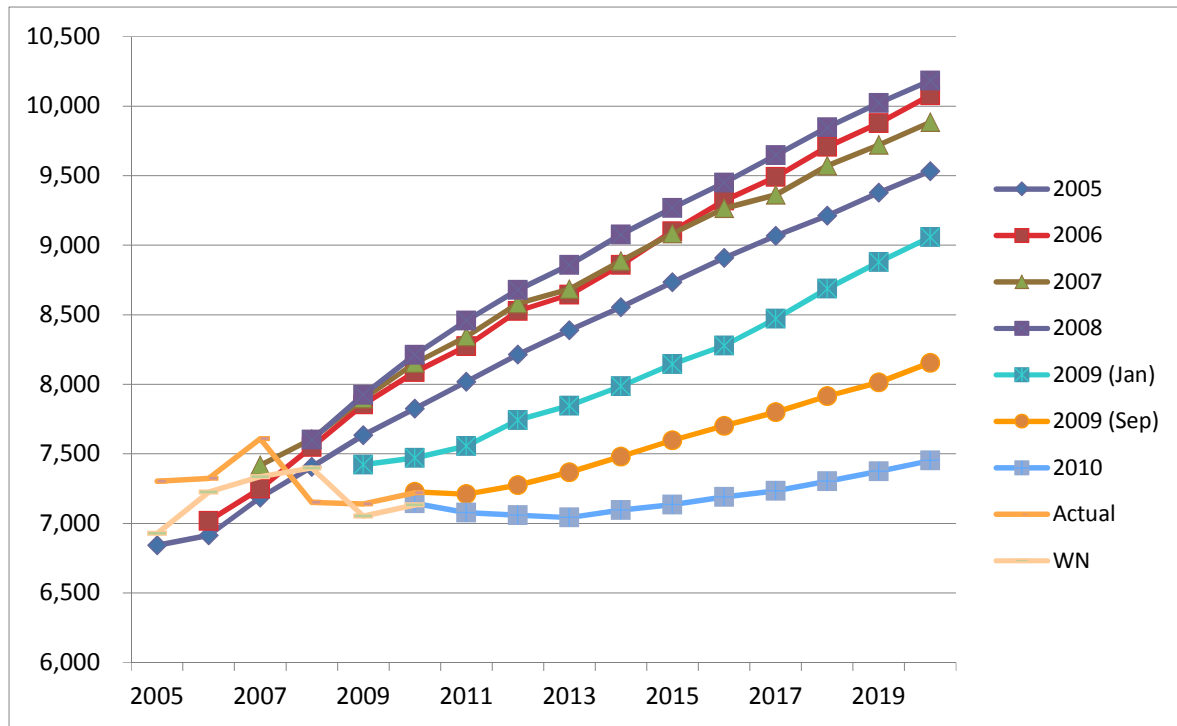
2006	1.1%							0.3%	4.3%
2007	3.9%	3.3%						3.9%	1.5%
2008	3.1%	4.1%	2.5%					-6.0%	0.9%
2009	3.1%	4.1%	3.8%	4.2%				-0.2%	-4.7%
2010	2.5%	3.0%	3.2%	3.6%	0.7%			1.1%	1.2%
2011	2.5%	2.3%	2.3%	3.0%	1.1%	-0.2%	-0.9%		
2012	2.4%	3.0%	2.8%	2.6%	2.5%	0.9%	-0.3%		
2013	2.1%	1.4%	1.2%	2.1%	1.3%	1.3%	-0.2%		
2014	2.0%	2.5%	2.3%	2.4%	1.8%	1.5%	0.8%		
2015	2.1%	2.7%	2.2%	2.1%	2.0%	1.6%	0.6%		
2016	2.0%	2.4%	2.0%	2.0%	1.6%	1.3%	0.8%		
2017	1.8%	1.8%	1.0%	2.1%	2.3%	1.3%	0.6%		
2018	1.6%	2.3%	2.2%	2.1%	2.6%	1.5%	1.0%		

Graphs

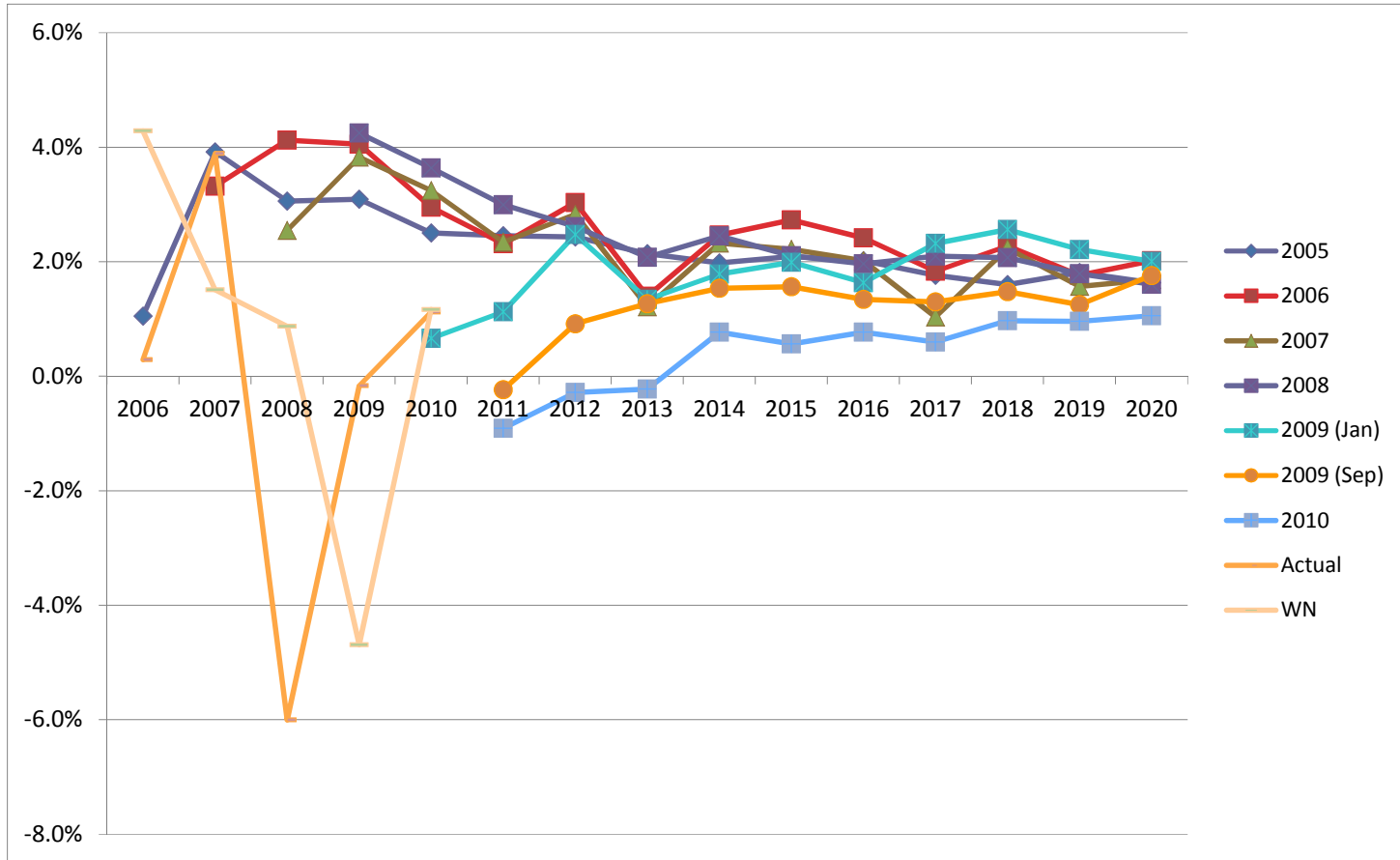
2019	1.8%	1.8%	1.6%	1.8%	2.2%	1.3%	1.0%
2020	1.6%	2.0%	1.7%	1.6%	2.0%	1.8%	1.1%
Growth 11-20	1.9%	2.2%	1.9%	2.1%	2.0%	1.4%	0.6%



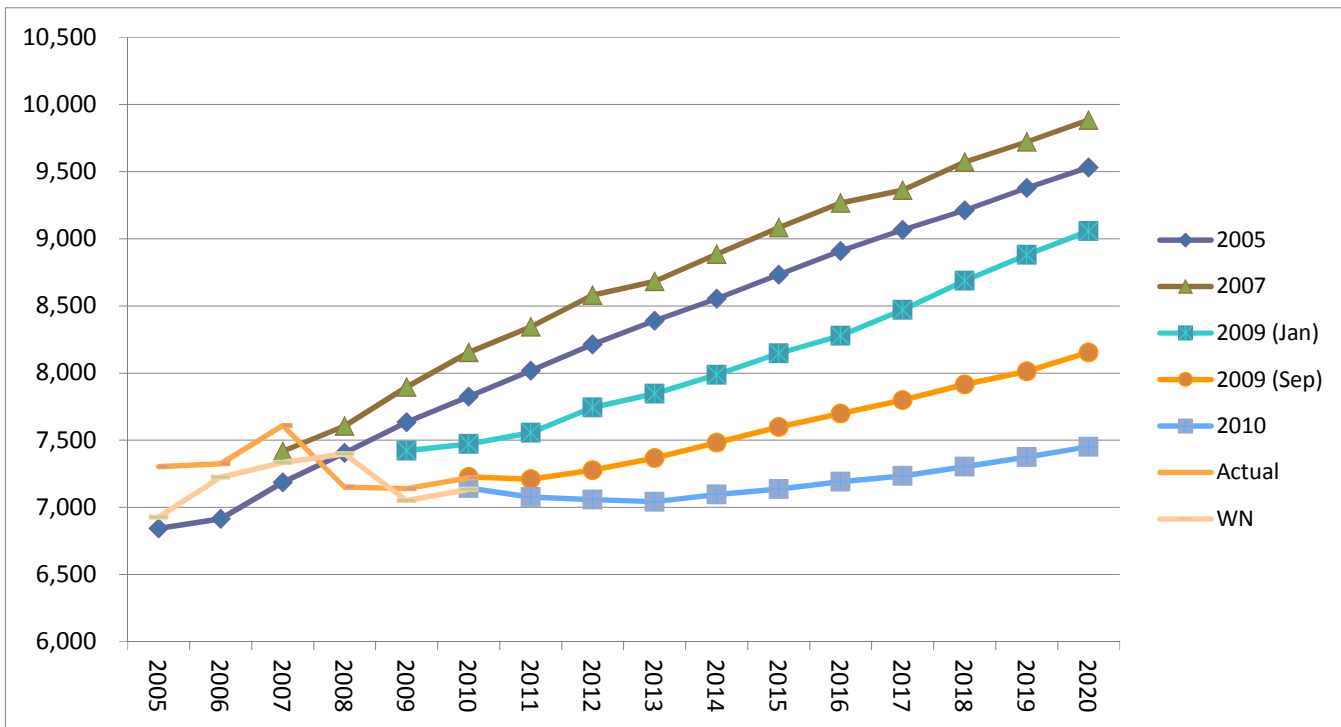
Graphs

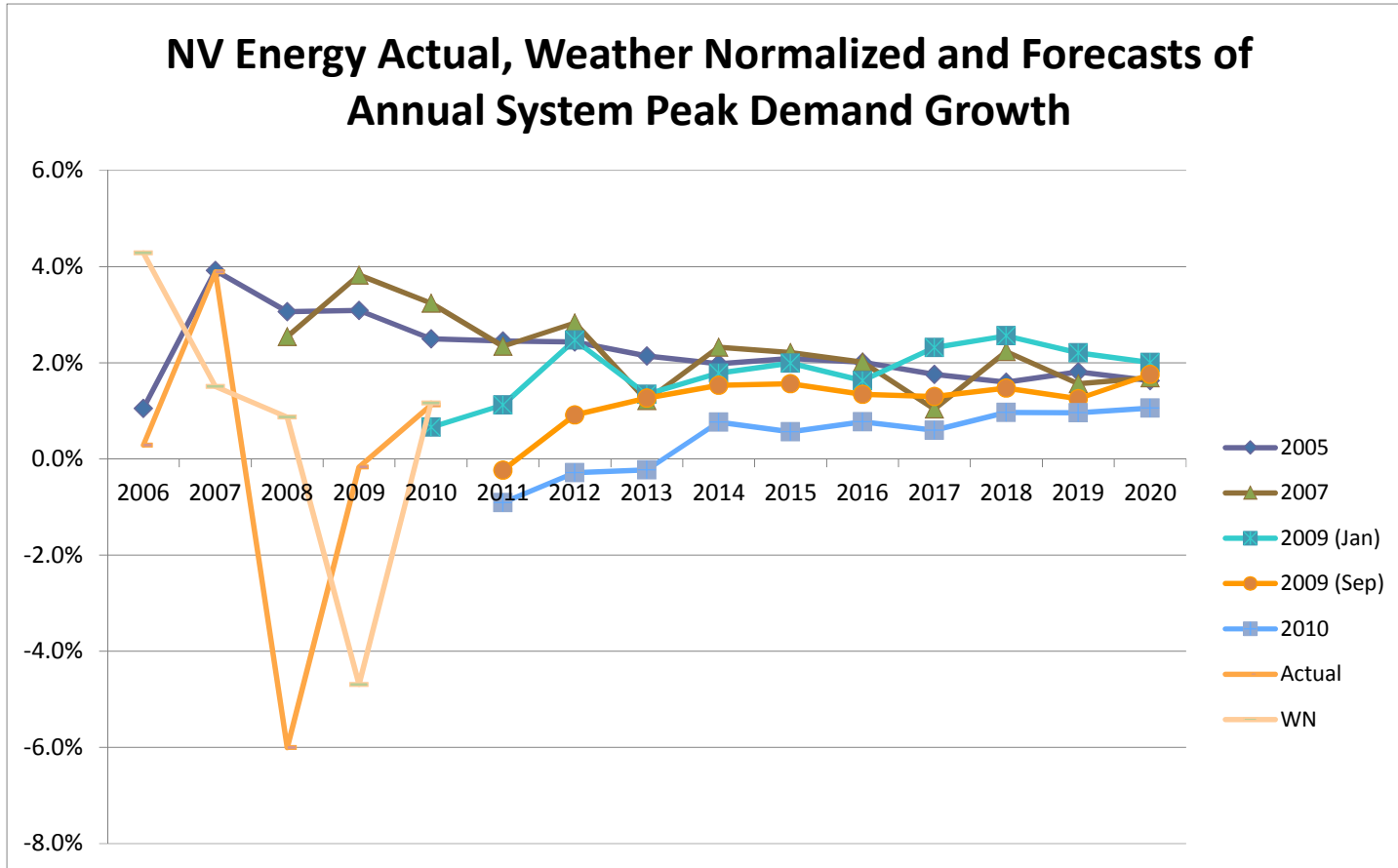


Graphs



Graphs





Forecast Peak MW

Fcst yr:	2005			
	NPC	SPPC	Total	2% Diveristy
2004	0	0	0	
2005	18,949	9,734	28,683	
2006	19,613	9,227	28,840	
2007	20,311	9,706	30,017	
2008	21,010	9,835	30,845	
2009	21,692	10,030	31,722	
2010	22,278	10,244	32,522	
2011	22,873	10,469	33,342	
2012	23,458	10,673	34,131	
2013	24,018	10,801	34,819	
2014	24,508	11,029	35,537	
2015	25,007	11,299	36,306	
2016	25,499	11,573	37,072	
2017	25,967	11,755	37,722	
2018	26,390	11,966	38,356	
2019	26,816	12,293	39,109	
2020	27,238	12,557	39,795	

Fcst yr:	2006			
	NPC	SPPC	Total	2% Diveristy
2005	0	0	0	
2006	21,251	9,211	30,462	
2007	22,018	9,236	31,254	
2008	22,910	9,601	32,511	
2009	23,938	9,923	33,861	
2010	24,661	10,000	34,661	
2011	25,226	10,133	35,359	
2012	26,013	10,444	36,457	
2013	26,615	10,545	37,160	
2014	27,227	10,682	37,909	
2015	27,769	10,991	38,760	
2016	28,487	11,188	39,675	
2017	29,044	11,328	40,372	
2018	29,617	11,650	41,267	
2019	30,176	11,814	41,990	
2020	30,784	12,022	42,806	

ITS

Fcst yr:

Year	2007			2%
	NPC	SPPC	Total	Diveristy
2005	0	0	0	
2006	0	0	0	
2007	22,578	9,253	31,831	
2008	23,526	9,121	32,647	
2009	24,476	9,371	33,846	
2010	25,355	9,483	34,838	
2011	26,028	9,540	35,568	
2012	26,847	9,711	36,558	
2013	27,421	9,838	37,258	
2014	28,069	9,984	38,054	
2015	28,667	10,121	38,788	
2016	29,306	10,290	39,595	
2017	29,764	10,401	40,164	
2018	30,250	10,536	40,786	
2019	30,727	10,672	41,400	
2020	31,252	10,845	42,098	

Fcst yr:

Year	2008			2%
	NPC	SPPC	Total	Diveristy
2005	0	0	0	
2006	0	0	0	
2007	0	0	0	
2008	23,220	9,544	32,764	
2009	24,186	9,850	34,036	
2010	25,149	10,006	35,155	
2011	25,991	10,187	36,178	
2012	26,791	10,264	37,055	
2013	27,410	10,379	37,788	
2014	28,145	10,349	38,494	
2015	28,863	10,317	39,180	
2016	29,605	10,452	40,057	
2017	30,212	10,614	40,826	
2018	30,842	10,767	41,609	
2019	31,412	10,915	42,327	
2020	31,989	11,055	43,044	

ITS

Fcst yr:

Year	2009 (January)			2%
	NPC	SPPC	Total	Diveristy
2005	0	0	0	
2006	0	0	0	
2007	0	0	0	
2008	0	0	0	
2009	22,790	8,793	31,583	
2010	23,248	8,817	32,065	
2011	23,903	8,895	32,798	
2012	24,747	9,054	33,801	
2013	25,333	9,147	34,480	
2014	25,890	9,139	35,029	
2015	26,491	9,246	35,736	
2016	27,171	9,391	36,562	
2017	27,713	9,475	37,189	
2018	28,439	9,632	38,071	
2019	29,173	9,797	38,971	
2020	29,984	9,994	39,978	

Fcst yr:

Year	2009 (August/Sep.)			2%
	NPC	SPPC	Total	Diveristy
2005	0	0	0	
2006	0	0	0	
2007	0	0	0	
2008	0	0	0	
2009	0	0	0	
2010	22,058	8,610	30,668	
2011	22,451	8,594	31,045	
2012	22,881	8,751	31,632	
2013	23,233	8,813	32,046	
2014	23,707	8,920	32,627	
2015	24,123	9,034	33,157	
2016	24,591	9,153	33,744	
2017	24,951	9,238	34,189	
2018	25,453	9,385	34,838	
2019	25,942	9,549	35,491	
2020	26,451	9,751	36,202	

ITS

Fcst yr: **2010 as of 8/23/10**

Year	NPC	SPPC	Total	2% Diveristy
2005	0	0	0	
2006	0	0	0	
2007	0	0	0	
2008	0	0	0	
2009	0	0	0	
2010	21,627	8,671	30,298	
2011	21,512	8,666	30,178	
2012	21,703	8,819	30,523	
2013	21,784	8,830	30,614	
2014	22,025	8,860	30,885	
2015	22,252	8,886	31,137	
2016	22,525	8,973	31,498	
2017	22,693	8,995	31,688	
2018	22,936	9,061	31,997	
2019	23,247	9,149	32,396	
2020	23,705	9,305	33,010	

Fcst yr: **Actual**

Year	NPC	SPPC	Total	2% Diveristy
2004	19,968	9,775	29,743	
2005	20,752	9,847	30,598	
2006	22,354	9,335	31,689	
2007	22,843	9,426	32,270	
2008	22,846	9,217	32,063	
2009	22,061	8,716	30,776	
2010			0	
2011				
2012				
2013				
2014				
2015				
2016				
2017				
2018				
2019				
2020				

Fcst yr:	Weather Adjusted			2% Diveristy
	NPC	SPPC	Total	
Year				
2004	19,766	9,710	29,477	
2005	20,749	9,788	30,537	
2006	22,113	9,184	31,297	
2007	22,246	9,240	31,485	
2008	22,500	9,078	31,578	
2009	22,022	8,599	30,620	
2010			0	
2011				
2012				
2013				
2014				
2015				
2016				
2017				
2018				
2019				
2020				

Graphs ITS

Year	2005	2006	2007	2008	2009 (Jan)	2009 (Sep)	2010	Actual	WN
2004								29,743	29,477
2005	28,683							30,598	30,537
2006	28,840	30,462						31,689	31,297
2007	30,017	31,254	31,831					32,270	31,485
2008	30,845	32,511	32,647	32,764				32,063	31,578
2009	31,722	33,861	33,846	34,036	31,583			30,776	30,620
2010	32,522	34,661	34,838	35,155	32,065	30,668	30,298		
2011	33,342	35,359	35,568	36,178	32,798	31,045	30,178		
2012	34,131	36,457	36,558	37,055	33,801	31,632	30,523		
2013	34,819	37,160	37,258	37,788	34,480	32,046	30,614		
2014	35,537	37,909	38,054	38,494	35,029	32,627	30,885		
2015	36,306	38,760	38,788	39,180	35,736	33,157	31,137		
2016	37,072	39,675	39,595	40,057	36,562	33,744	31,498		
2017	37,722	40,372	40,164	40,826	37,189	34,189	31,688		
2018	38,356	41,267	40,786	41,609	38,071	34,838	31,997		
2019	39,109	41,990	41,400	42,327	38,971	35,491	32,396		
2020	39,795	42,806	42,098	43,044	39,978	36,202	33,010		

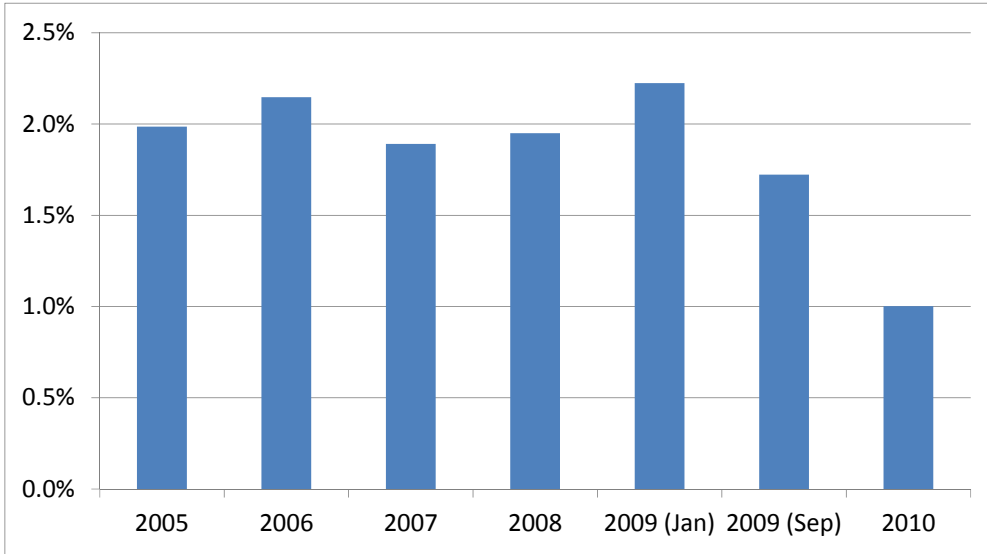
Percent growth

2005								2.9%	3.6%
2006	0.5%							3.6%	2.5%
2007	4.1%	2.6%						1.8%	0.6%
2008	2.8%	4.0%	2.6%					-0.6%	0.3%
2009	2.8%	4.2%	3.7%	3.9%				-4.0%	-3.0%
2010	2.5%	2.4%	2.9%	3.3%	1.5%	0.2%	-1.1%		
2011	2.5%	2.0%	2.1%	2.9%	2.3%	1.2%	-0.4%		
2012	2.4%	3.1%	2.8%	2.4%	3.1%	1.9%	1.1%		
2013	2.0%	1.9%	1.9%	2.0%	2.0%	1.3%	0.3%		
2014	2.1%	2.0%	2.1%	1.9%	1.6%	1.8%	0.9%		
2015	2.2%	2.2%	1.9%	1.8%	2.0%	1.6%	0.8%		
2016	2.1%	2.4%	2.1%	2.2%	2.3%	1.8%	1.2%		
2017	1.8%	1.8%	1.4%	1.9%	1.7%	1.3%	0.6%		
2018	1.7%	2.2%	1.5%	1.9%	2.4%	1.9%	1.0%		
2019	2.0%	1.8%	1.5%	1.7%	2.4%	1.9%	1.2%		
2020	1.8%	1.9%	1.7%	1.7%	2.6%	2.0%	1.9%		

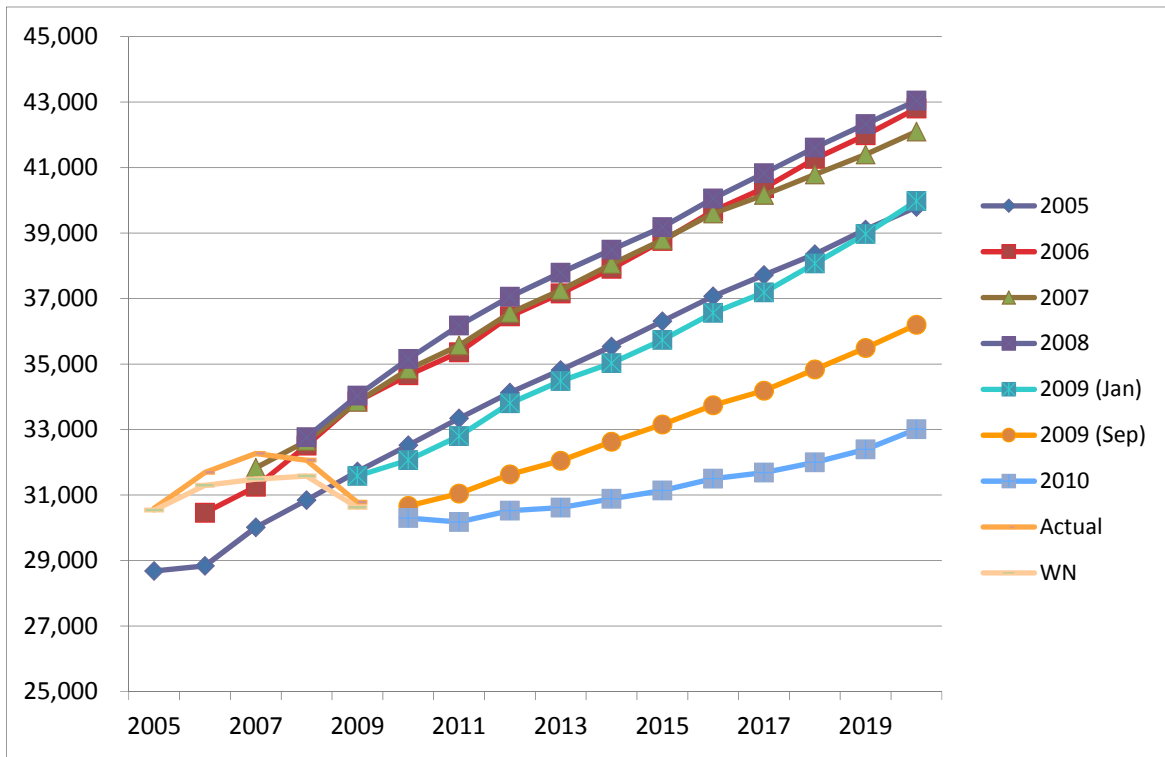
Growth

11-20	2.0%	2.1%	1.9%	1.9%	2.2%	1.7%	1.0%		
-------	------	------	------	------	------	------	------	--	--

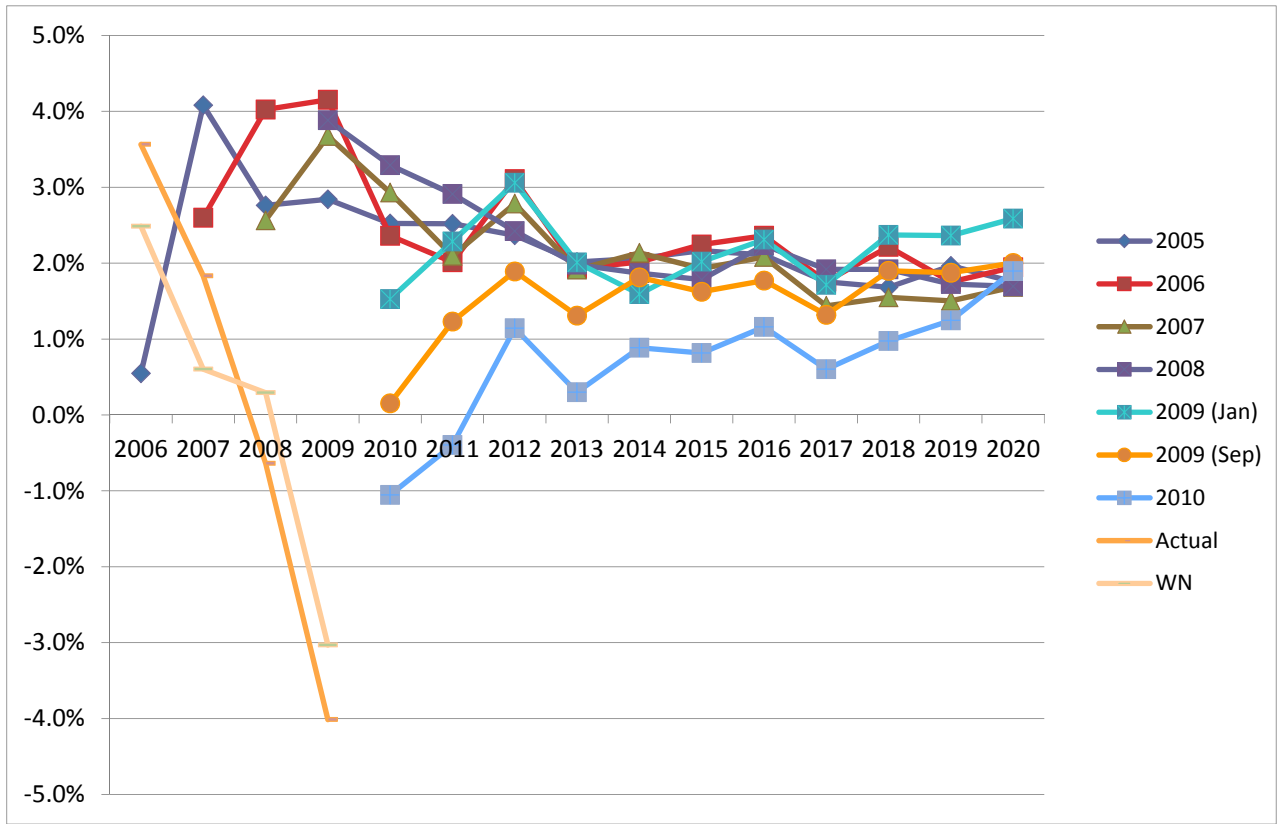
Graphs ITS



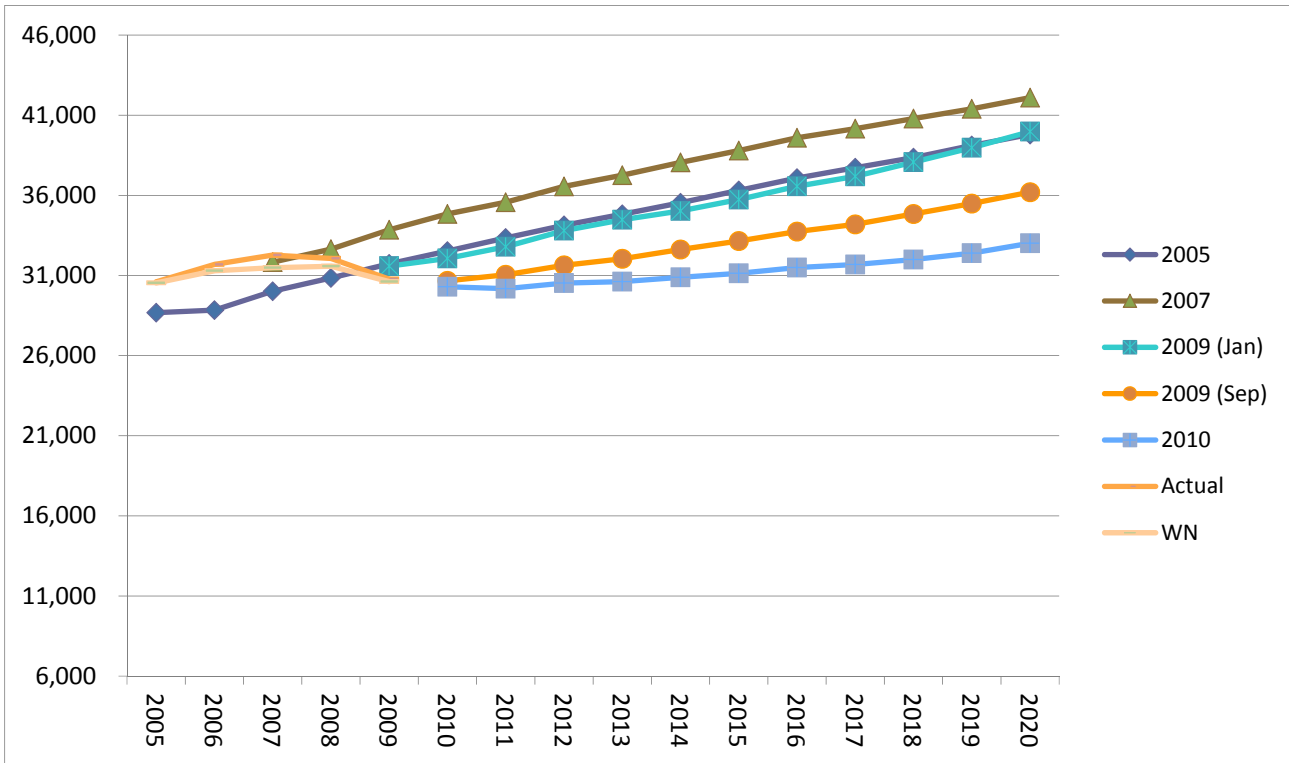
Graphs ITS



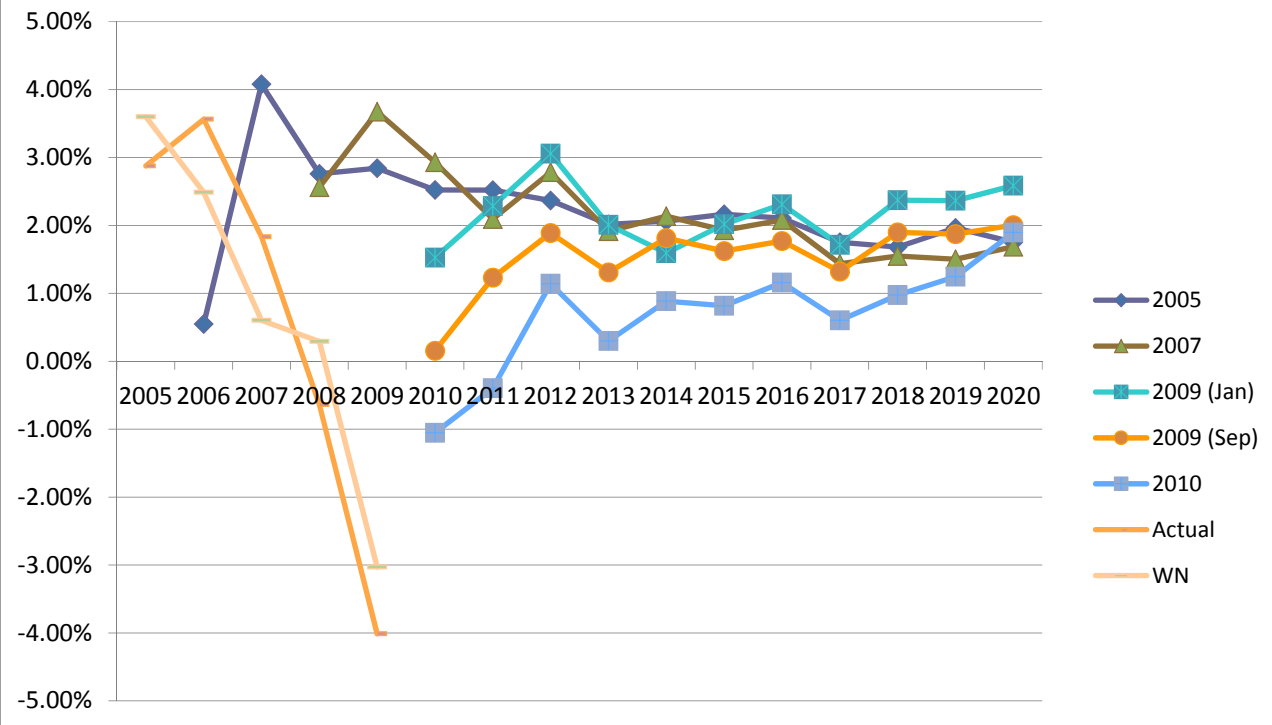
Graphs ITS



Graphs ITS



NV Energy Actual, Weather Normalized and forecasts of Annual System Energy Growth

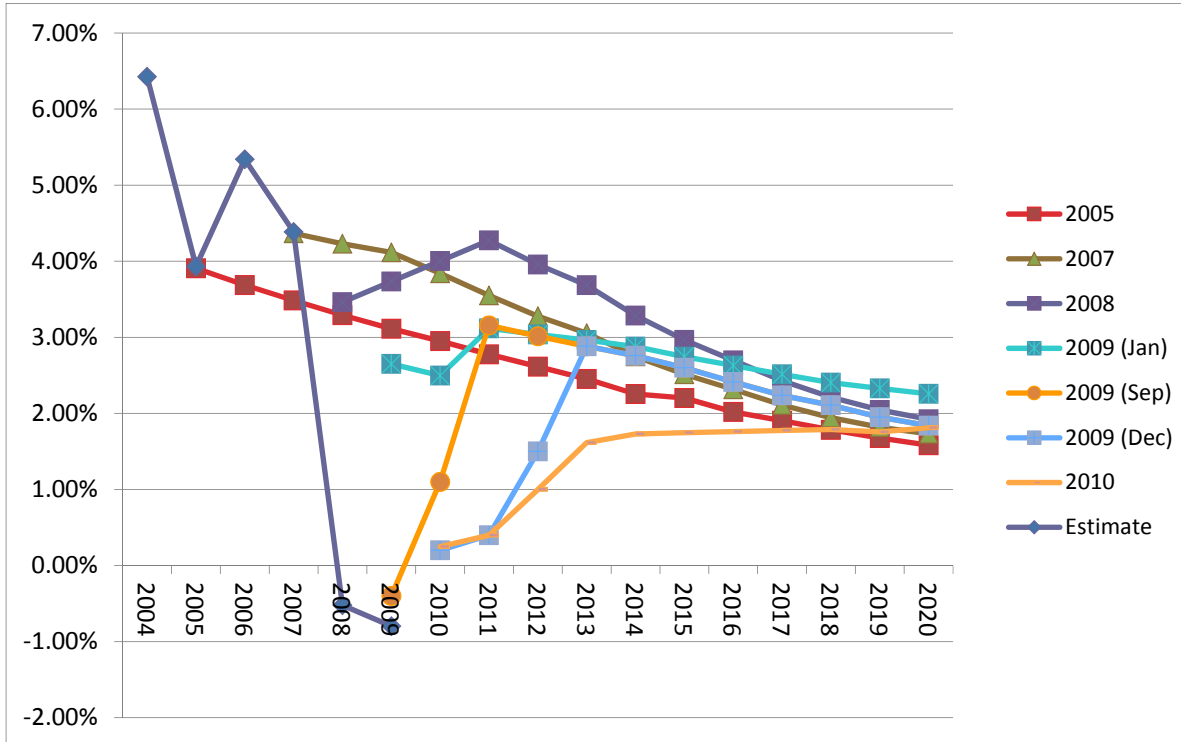


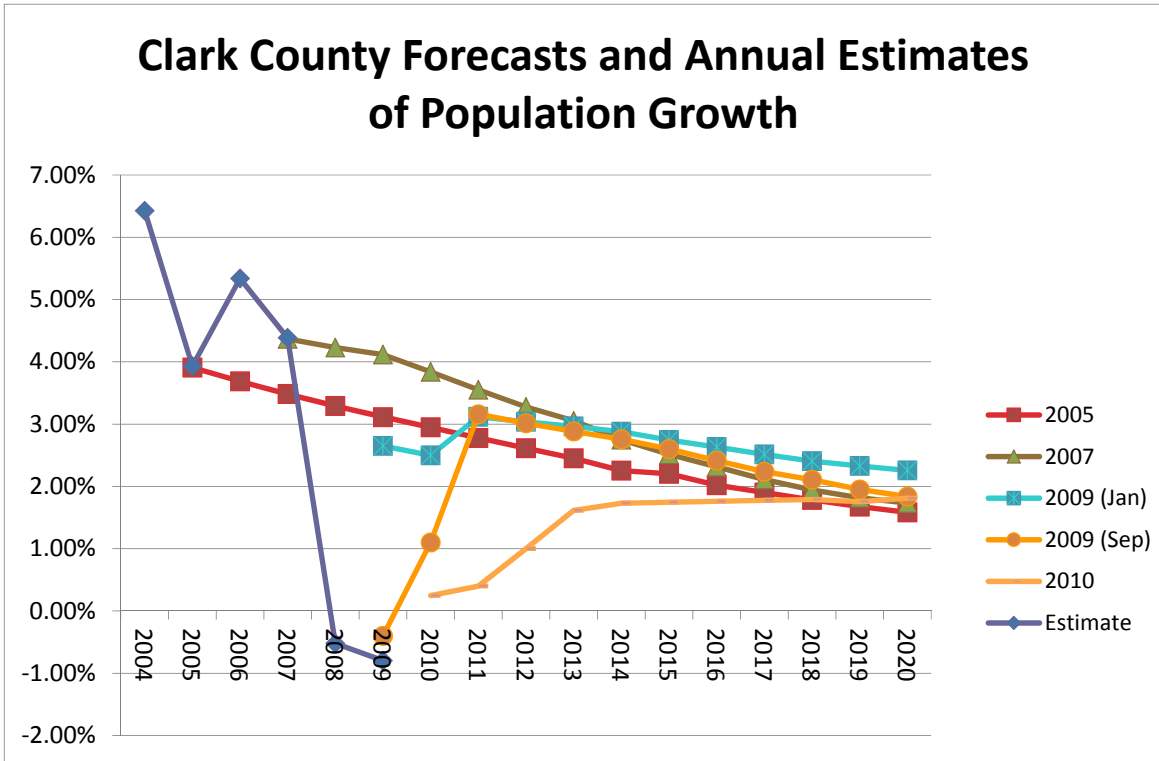
Popn - Las Vegas

Year of Fcs	Popn Used in Models							Estimate
	2005	2007	2008	2009 (Jan) O6 IRP	2009 (Sep) 11th	2009 (Dec) 09 ESP	2010 09 IRP	
Year	03 IRP 8th 2004	06 IRP 4th Jan07	06 IRP 7th Jan08	11th Nov08	09 ESP Aug09	09 IRP Dec09	10 ESP Jun10	
2004								6.4%
2005	3.9%							3.9%
2006	3.7%							5.3%
2007	3.5%	4.4%						4.4%
2008	3.3%	4.2%	3.5%					-0.5%
2009	3.1%	4.1%	3.7%	2.7%	-0.4%			-0.8%
2010	3.0%	3.8%	4.0%	2.5%	1.1%	0.2%	0.2%	
2011	2.8%	3.6%	4.3%	3.1%	3.2%	0.4%	0.4%	
2012	2.6%	3.3%	4.0%	3.0%	3.0%	1.5%	1.0%	
2013	2.5%	3.1%	3.7%	3.0%	2.9%	2.9%	1.6%	
2014	2.3%	2.7%	3.3%	2.9%	2.8%	2.8%	1.7%	
2015	2.2%	2.5%	3.0%	2.7%	2.6%	2.6%	1.7%	
2016	2.0%	2.3%	2.7%	2.6%	2.4%	2.4%	1.8%	
2017	1.9%	2.1%	2.4%	2.5%	2.2%	2.2%	1.8%	
2018	1.8%	1.9%	2.2%	2.4%	2.1%	2.1%	1.8%	
2019	1.7%	1.8%	2.0%	2.3%	2.0%	2.0%	1.8%	
2020	1.6%	1.7%	1.9%	2.3%	1.8%	1.8%	1.8%	

2004	1708819
2005	1775591
2006	1841063
2007	1905226
2008	1967958
2009	2029225
2010	2089102
2011	2147113
2012	2203256
2013	2257292
2014	2308177
2015	2359020
2016	2406650
2017	2452454
2018	2496209
2019	2538060
2020	2578221

Popn - Las Vegas





Popn - Reno

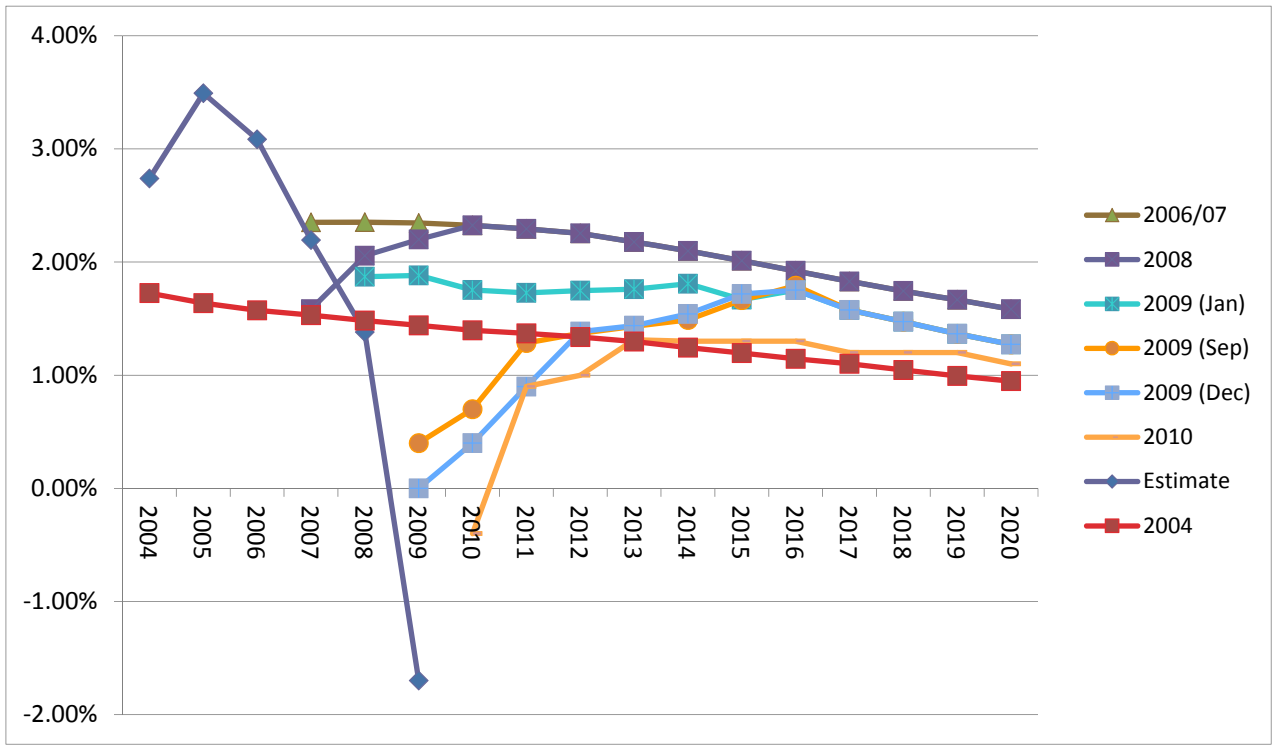
WASHOE COUNTY

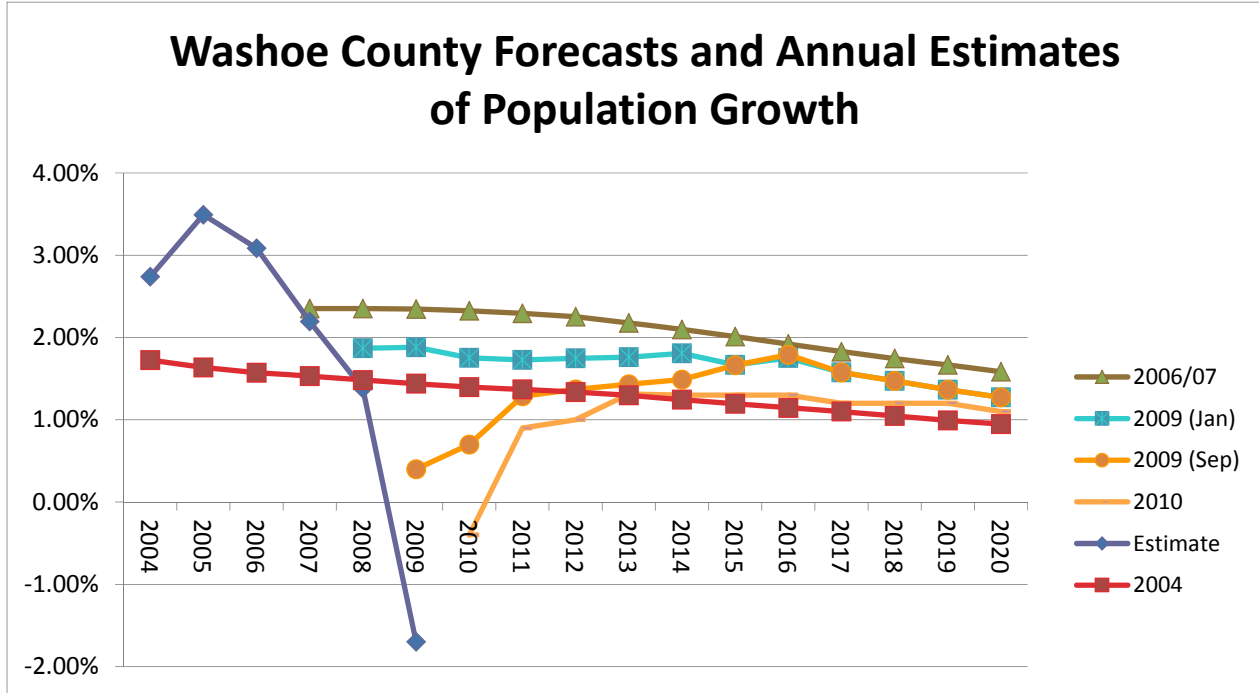
Year of Fcs	Popn Used in Models							Estimate
	2005	2006/07	2008	2009 (Jan)	2009 (Sep)	2009 (Dec)	2010	
	04 IRP 8th	2007 IRP	07 IRP	07 IRP 7th	09 ESP	09 ESP	10 IRP	
Year	2004	Jul06	2nd	Nov08	(orig)	Dec09	Apr10	
2004	1.7%							2.7%
2005	1.6%							3.5%
2006	1.6%							3.1%
2007	1.5%	2.4%	1.6%					2.2%
2008	1.5%	2.4%	2.1%	1.9%				1.4%
2009	1.4%	2.3%	2.2%	1.9%	0.4%	0.0%		-1.7%
2010	1.4%	2.3%	2.3%	1.8%	0.7%	0.4%	-0.4%	
2011	1.4%	2.3%	2.3%	1.7%	1.3%	0.9%	0.9%	
2012	1.3%	2.3%	2.3%	1.7%	1.4%	1.4%	1.0%	
2013	1.3%	2.2%	2.2%	1.8%	1.4%	1.4%	1.3%	
2014	1.2%	2.1%	2.1%	1.8%	1.5%	1.5%	1.3%	
2015	1.2%	2.0%	2.0%	1.7%	1.7%	1.7%	1.3%	
2016	1.1%	1.9%	1.9%	1.8%	1.8%	1.8%	1.3%	
2017	1.1%	1.8%	1.8%	1.6%	1.6%	1.6%	1.2%	
2018	1.0%	1.7%	1.7%	1.5%	1.5%	1.5%	1.2%	
2019	1.0%	1.7%	1.7%	1.4%	1.4%	1.4%	1.2%	
2020	0.9%	1.6%	1.6%	1.3%	1.3%	1.3%	1.1%	

4/20/2004

2003	373233	373233
2004	379673	383453
2005	385887	396844
2006	391956	409085
2007	397958	418061
2008	403860	423833
2009	409679	416632
2010	415402	
2011	421095	
2012	426727	
2013	432267	
2014	437647	
2015	442878	
2016	447949	
2017	452882	
2018	457620	
2019	462166	
2020	466546	

Popn - Reno





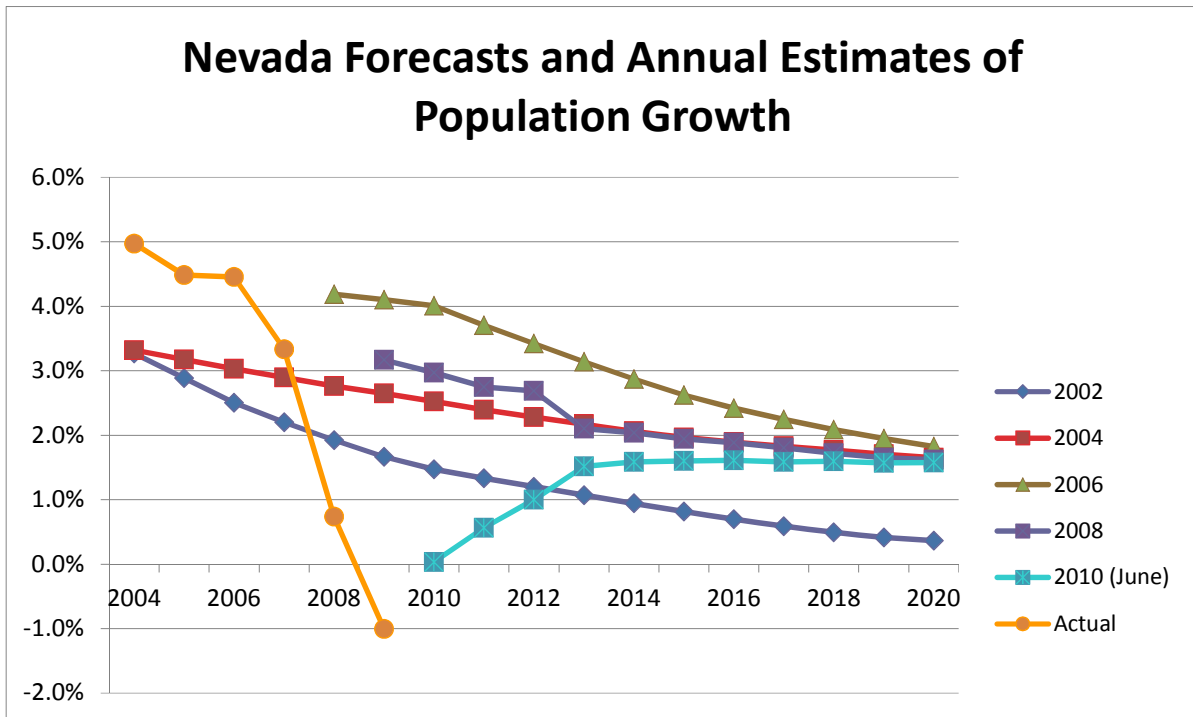
Nevada Popn

Sate Demographer

Year	2002	2004	2006	2008	2010 (June)	Actual
2000						2,023,378
2001	2,132,498					2,132,498
2002	2,216,028					2,206,022
2003	2,298,366	2,296,566				2,296,566
2004	2,373,543	2,372,821				2,410,768
2005	2,442,116	2,448,201				2,518,869
2006	2,503,286	2,522,427				2,631,057
2007	2,558,363	2,595,460	2,736,786			2,718,737
2008	2,607,574	2,667,187	2,851,387	2,789,884		2,738,733
2009	2,651,018	2,737,803	2,968,430	2,878,288		2,711,205
2010	2,690,078	2,806,940	3,087,428	2,963,812		
2011	2,725,929	2,874,175	3,201,806	3,045,230		
2012	2,758,635	2,939,782	3,311,416	3,127,078		
2013	2,788,212	3,003,614	3,415,438	3,192,867		
2014	2,814,538	3,065,534	3,513,485	3,257,901		
2015	2,837,522	3,125,677	3,605,713	3,321,189		
2016	2,857,313	3,184,811	3,692,962	3,383,695		
2017	2,874,179	3,243,083	3,775,933	3,444,739		
2018	2,888,362	3,300,439	3,854,676	3,504,000		
2019	2,900,390	3,356,766	3,929,793	3,561,765		
2020	2,910,959	3,412,147	4,001,520	3,619,563		

% Growth

2004	3.3%	3.3%				5.0%
2005	2.9%	3.2%				4.5%
2006	2.5%	3.0%				4.5%
2007	2.2%	2.9%				3.3%
2008	1.9%	2.8%	4.2%			0.7%
2009	1.7%	2.6%	4.1%	3.2%		-1.0%
2010	1.5%	2.5%	4.0%	3.0%	0.0%	
2011	1.3%	2.4%	3.7%	2.7%	0.6%	
2012	1.2%	2.3%	3.4%	2.7%	1.0%	
2013	1.1%	2.2%	3.1%	2.1%	1.5%	
2014	0.9%	2.1%	2.9%	2.0%	1.6%	
2015	0.8%	2.0%	2.6%	1.9%	1.6%	
2016	0.7%	1.9%	2.4%	1.9%	1.6%	
2017	0.6%	1.8%	2.2%	1.8%	1.6%	
2018	0.5%	1.8%	2.1%	1.7%	1.6%	
2019	0.4%	1.7%	1.9%	1.6%	1.6%	
2020	0.4%	1.6%	1.8%	1.6%	1.6%	



NEVADA NON-FARM EMPLOYMENT

Year	June 2007	Oct. 2008	Sep 2009	Aug. 2010	Actual
2003					1,088
2004					1,153
2005					1,223
2006	1,284				1,280
2007	1,322	1,292			1,292
2008	1,358	1,285	1,266		1,264
2009	1,399	1,260	1,193	1,149	1,149
2010	1,442	1,261	1,184	1,115	
2011	1,480	1,285	1,208	1,114	
2012	1,511	1,325	1,247	1,138	
2013	1,537	1,363	1,285	1,168	
2014	1,562	1,395	1,313	1,197	
2015	1,589	1,428	1,337	1,225	
2016	1,617	1,461	1,363	1,252	
2017	1,645	1,489	1,388	1,279	
2018	1,671	1,515	1,413	1,303	
2019	1,695	1,541	1,440	1,327	
2020	1,721	1,566	1,472	1,350	

Nevada Employment

% Growth	June 2007	Oct. 2008	Sep 2009	Aug. 2010	Actual
2004					5.9%
2005					6.1%
2006					4.6%
2007	3.0%				1.0%
2008	2.7%	-0.5%			-2.2%
2009	3.0%	-1.9%	-5.8%		-9.1%
2010	3.1%	0.1%	-0.8%	-2.9%	
2011	2.7%	1.9%	2.0%	-0.1%	
2012	2.1%	3.1%	3.3%	2.1%	
2013	1.7%	2.9%	3.0%	2.6%	
2014	1.6%	2.4%	2.2%	2.5%	
2015	1.7%	2.3%	1.8%	2.4%	
2016	1.7%	2.3%	1.9%	2.2%	
2017	1.7%	1.9%	1.8%	2.2%	
2018	1.6%	1.8%	1.8%	1.9%	
2019	1.4%	1.7%	1.9%	1.8%	
2020	1.5%	1.7%	2.2%	1.8%	

