

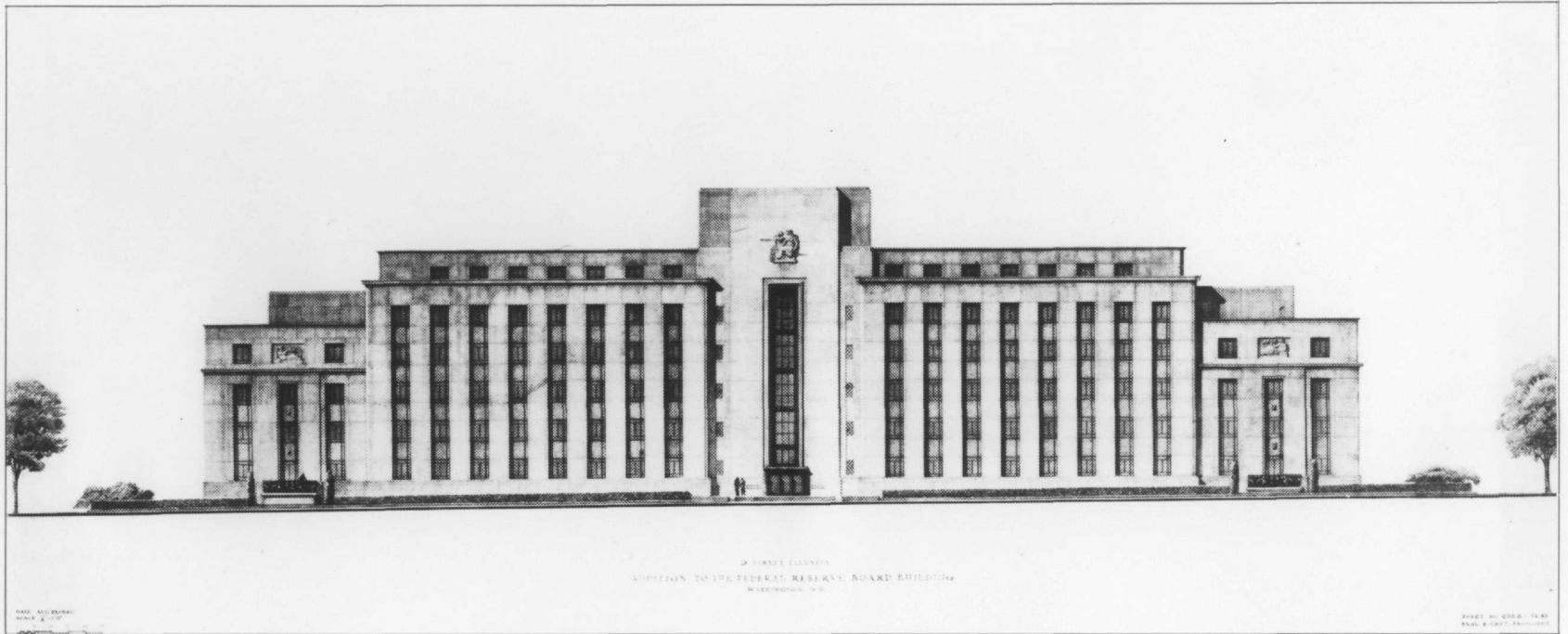
ADDITION TO
FEDERAL RESERVE BOARD BUILDING

WASHINGTON D. C.

PAUL P. CRET ARCHITECT
PHILADELPHIA PA.
AUGUST 29 1940



"e"



10

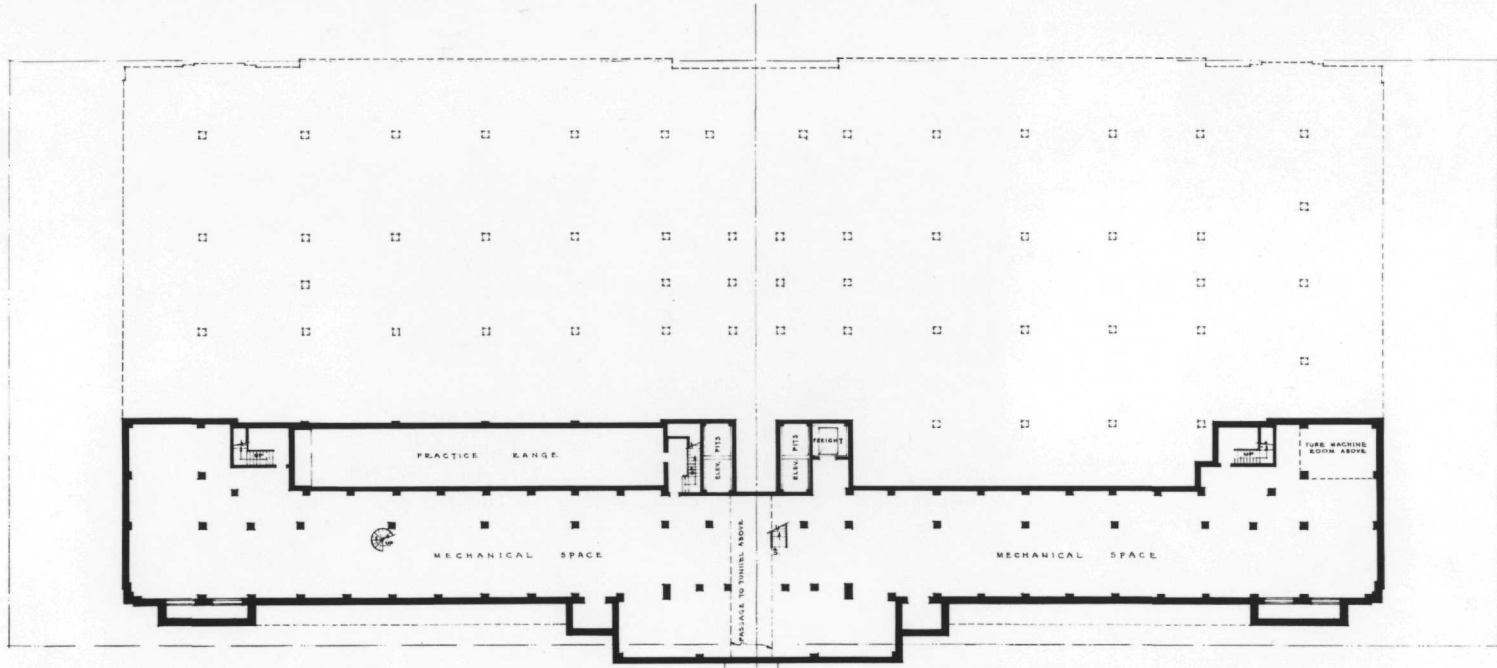


207 STREET FOR OFFICE
ADDITION TO THE FEDERAL RESERVE BOARD BUILDING
WASHINGTON, D. C.

DATE: AUGUST 1930
DRAWN BY: [illegible]
REVISIONS: [illegible]

SCALE: 1/4" = 1'-0"

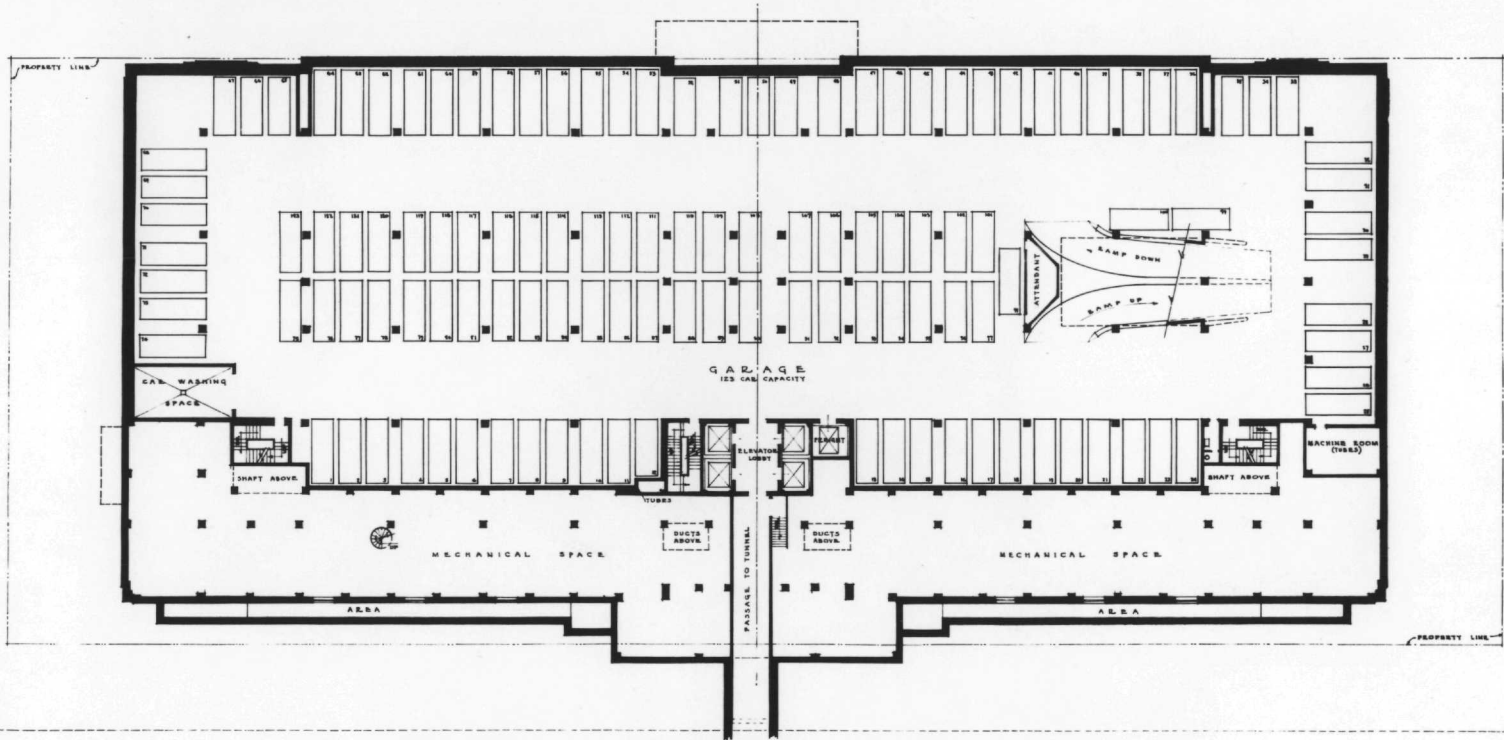
"20th + 21st"



MECHANICAL LEVEL PLAN
ADDITION TO FEDERAL RESERVE BOARD BUILDING
WASHINGTON - D.C.

AUGUST 29TH, 1940.
SCALE: 1/16" = 1'-0"

PAUL P. CRET, ARCHITECT
SHEET NO. 405 D SK 34

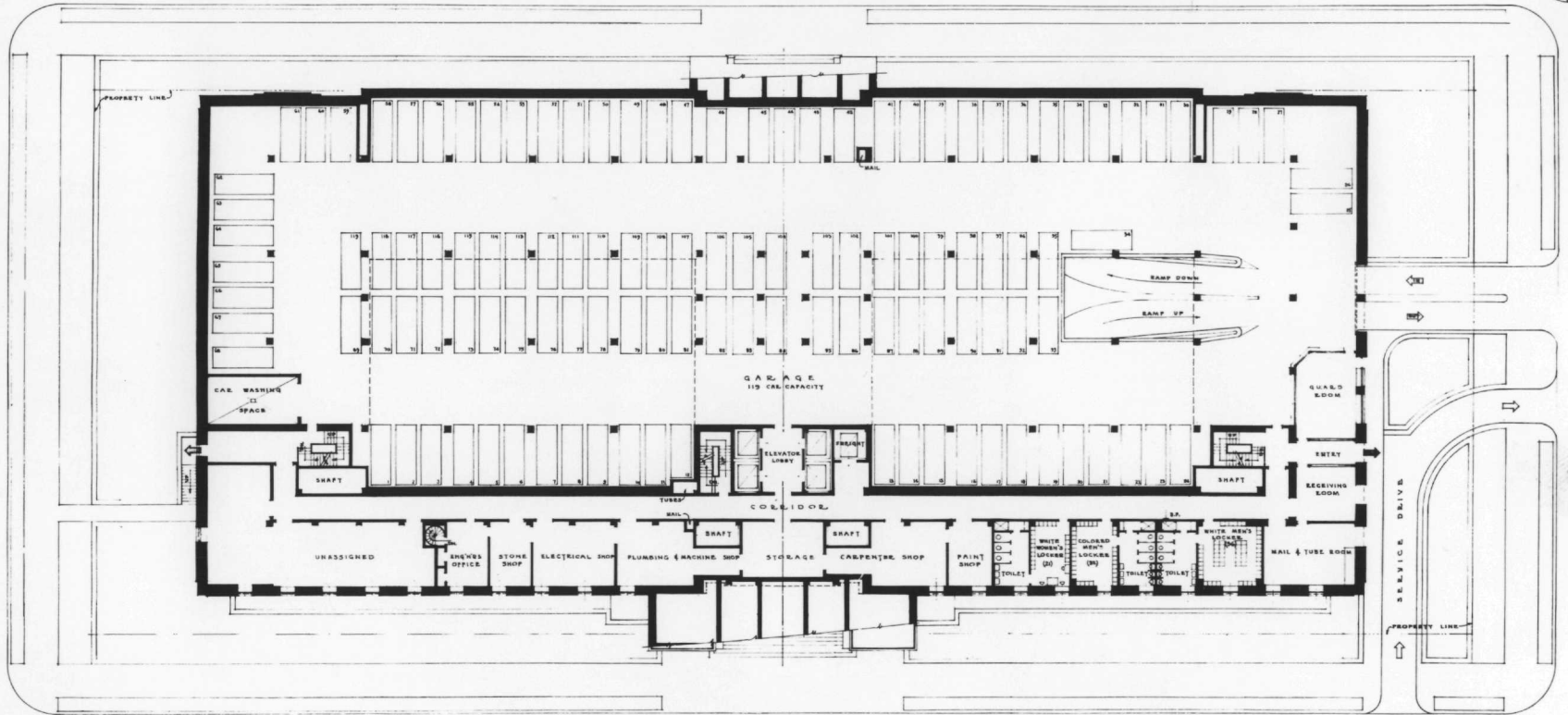


SUB-BASEMENT PLAN
ADDITION TO FEDERAL RESERVE BOARD BUILDING
 WASHINGTON - D.C.

AUGUST 29TH 1940
 SCALE - 1/8" = 1'-0"
 0 1 2 3 4 5 6 7 8 9 10

PAUL F. CRBT, ARCHITECT
 SHEET NO. 405-B 3K. 35

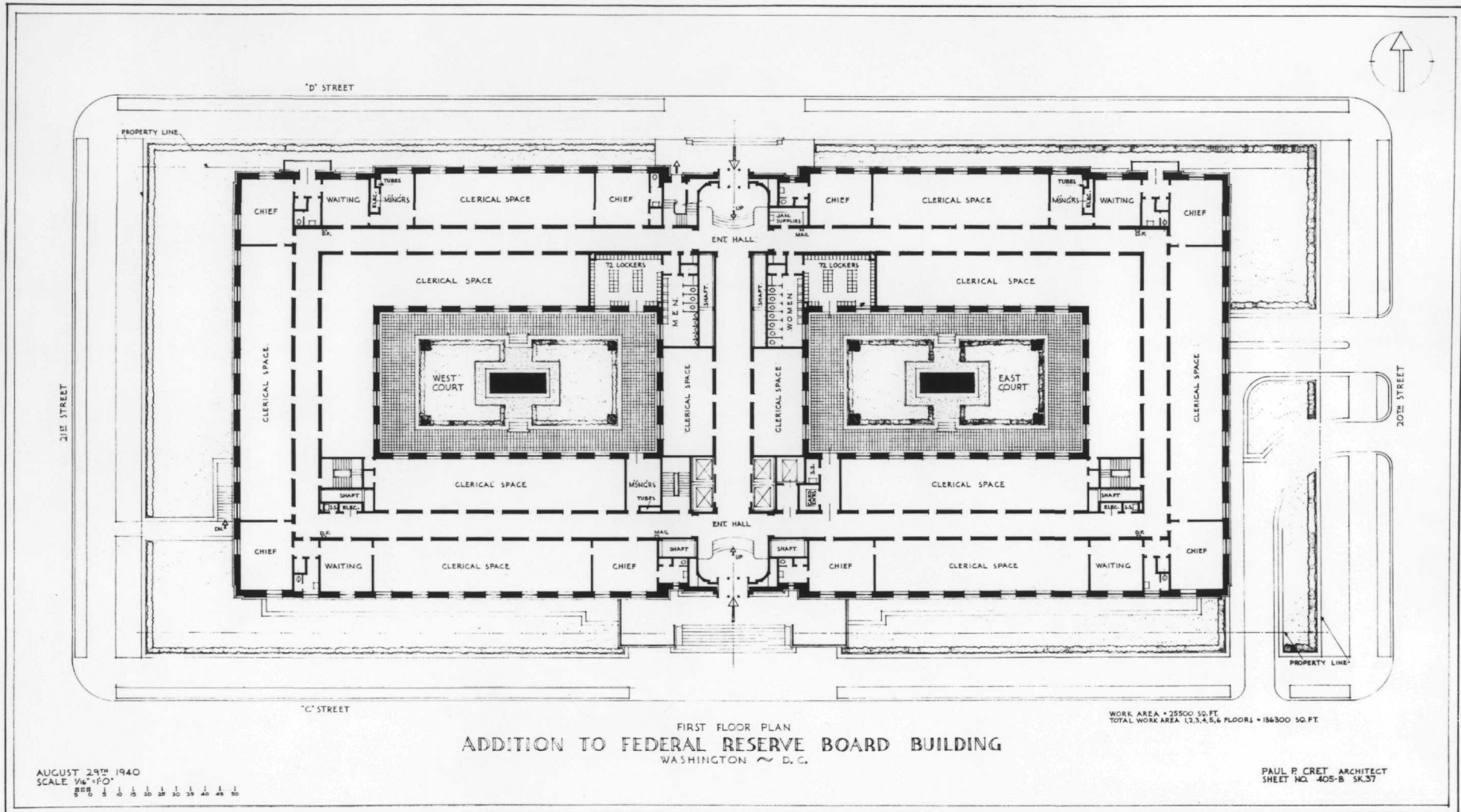
CAR CAPACITY
 BASEMENT 119 CARS
 SUB BASEMENT 133 CARS
 TOTAL 252 CARS



BASEMENT PLAN
 ADDITION TO FEDERAL RESERVE BOARD BUILDING
 WASHINGTON - D. C.

AUGUST 29th, 1940
 SCALE - 1/4" = 1'-0"
 0 1 2 3 4 5 6 7 8 9 10

PAUL P. CRET, ARCHITECT
 SHEET NO. 409-D 3K-36

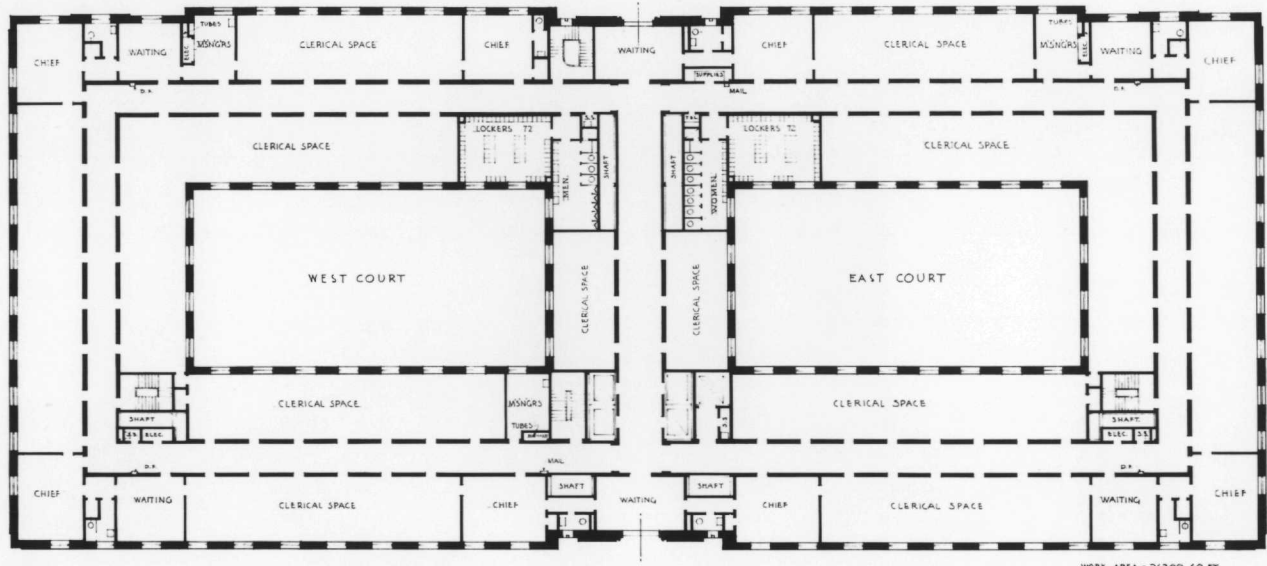


FIRST FLOOR PLAN
ADDITION TO FEDERAL RESERVE BOARD BUILDING
 WASHINGTON ~ D. C.

WORK AREA = 25900 SQ. FT.
 TOTAL WORK AREA 12, 3, 4, 5, & FLOORS = 136300 SQ. FT.

AUGUST 29TH 1940
 SCALE 1/4" = 1'-0"
 0 5 10 15 20 25 30 35 40 45

PAUL P. CRET, ARCHITECT
 SHEET NO. 405-B 5K.37

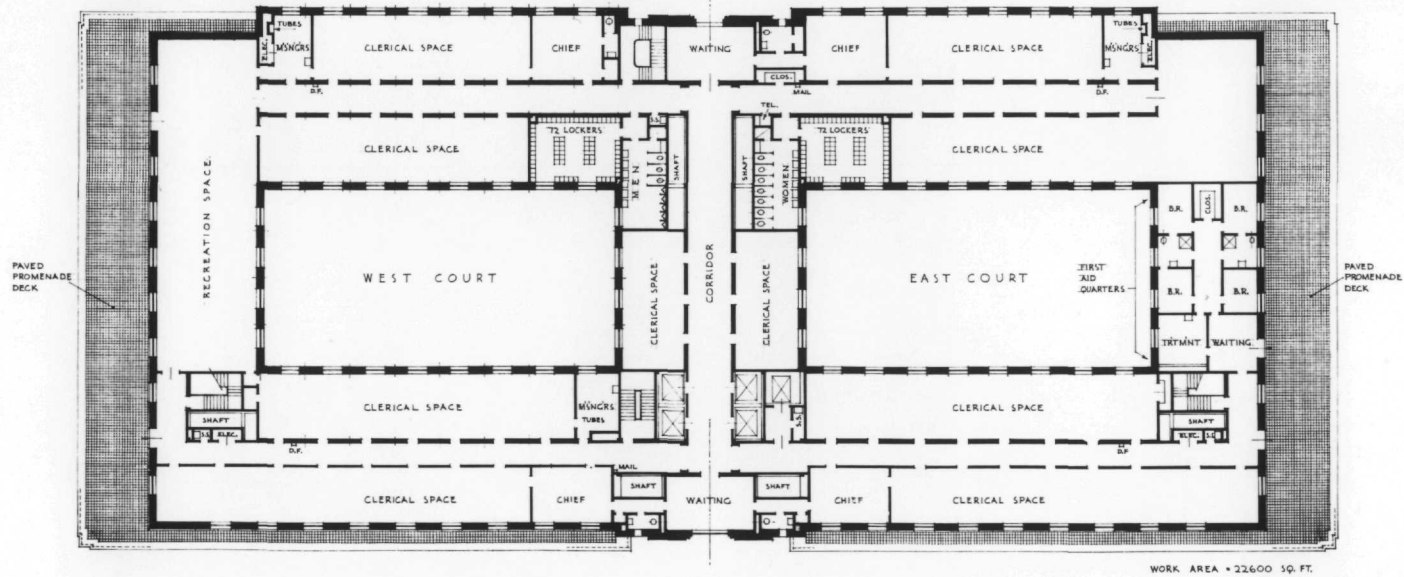


WORK AREA - 26300 SQ. FT.

SECOND, THIRD, & FOURTH FLOOR PLANS
ADDITION TO FEDERAL RESERVE BOARD BUILDING
WASHINGTON ~ D. C.

AUGUST 29TH 1940
SCALE 1/4" = 1'-0"

PAUL P. CRET ARCHITECT
SHEET NO. 405-B SK38

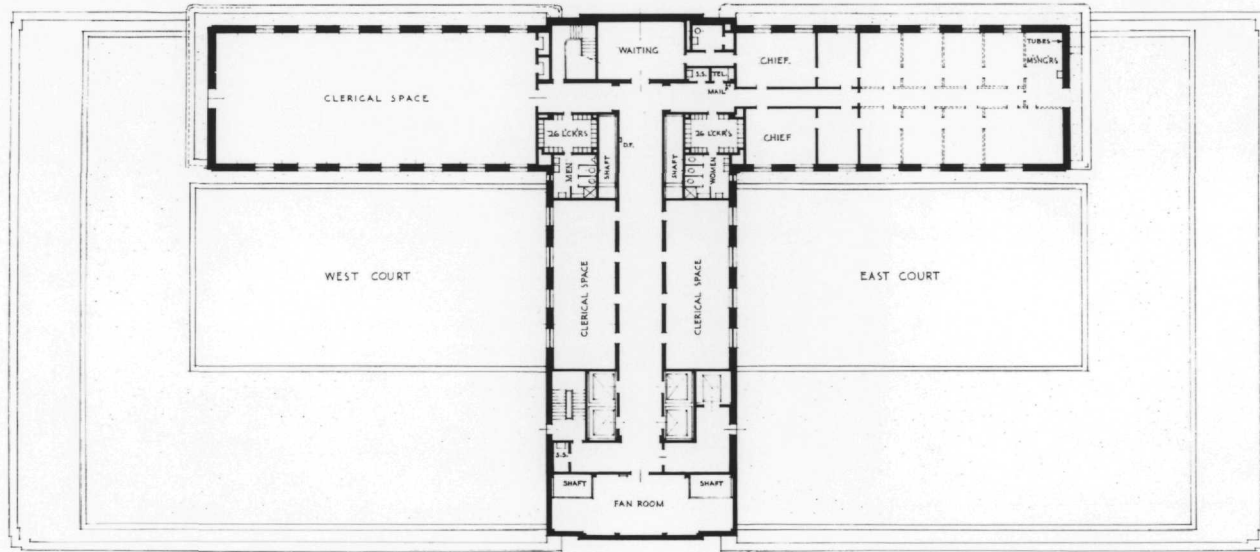


WORK AREA - 22600 SQ. FT.

FIFTH FLOOR PLAN
 ADDITION TO FEDERAL RESERVE BOARD BUILDING
 WASHINGTON ~ D. C.

AUGUST 29TH 1940
 SCALE 1/4" = 1'-0"

PAUL P. CRET ARCHITECT
 SHEET NO. 405-B SK.39

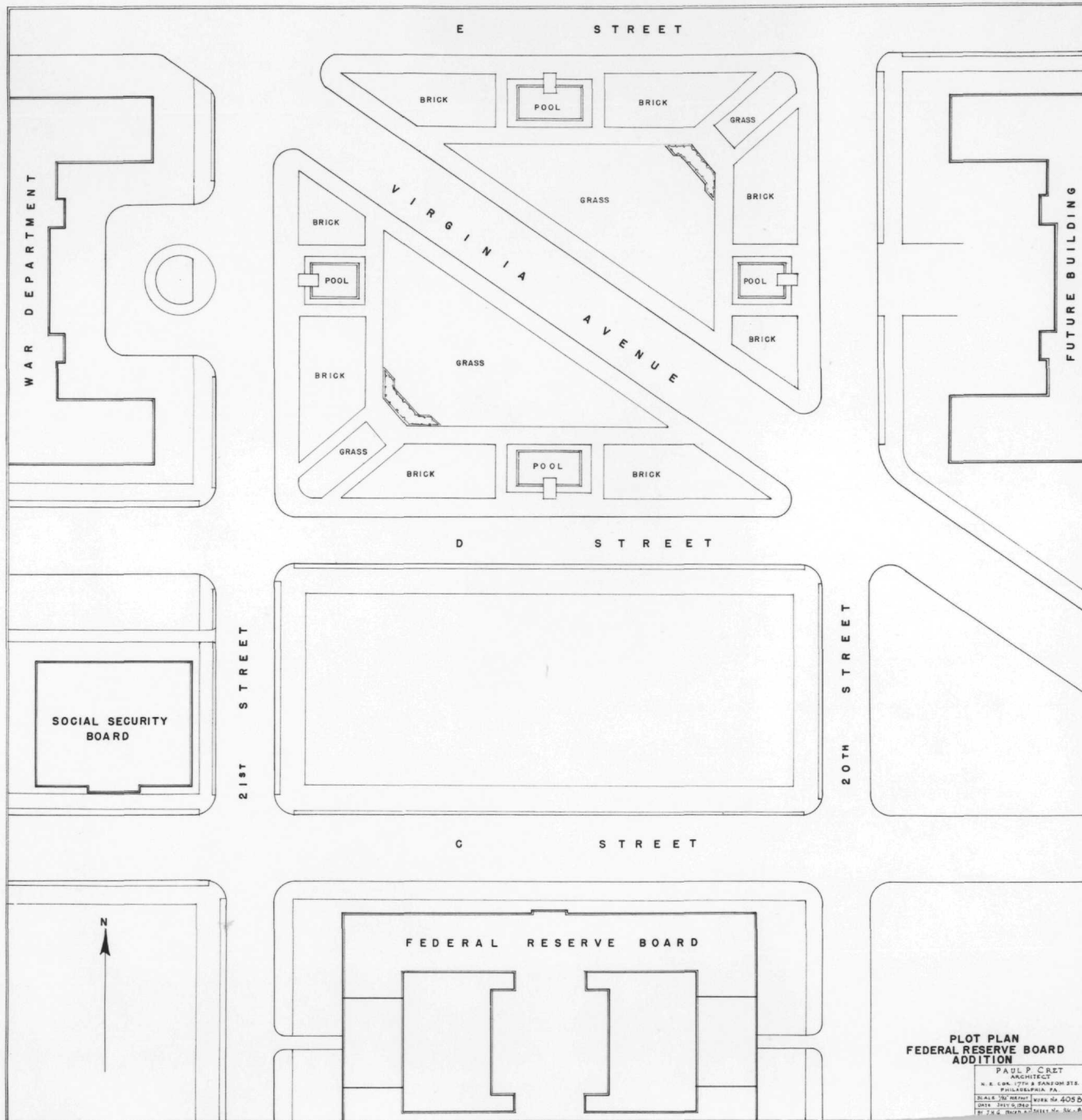


WORK AREA - 9100 SQ. FT.

SIXTH FLOOR PLAN
 ADDITION TO FEDERAL RESERVE BOARD BUILDING
 WASHINGTON ~ D. C.

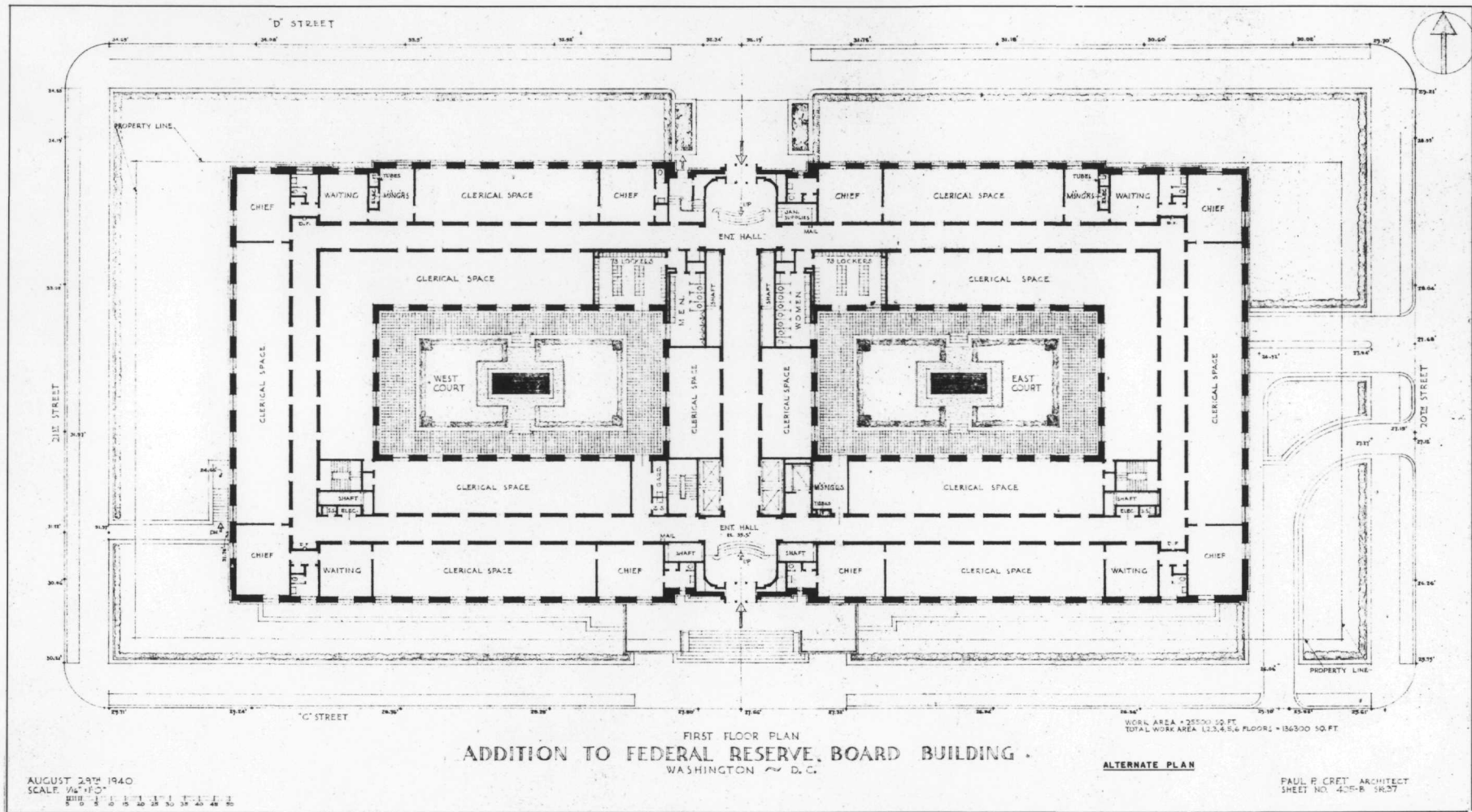
AUGUST 29th 1940
 SCALE 1/8" = 1'-0"

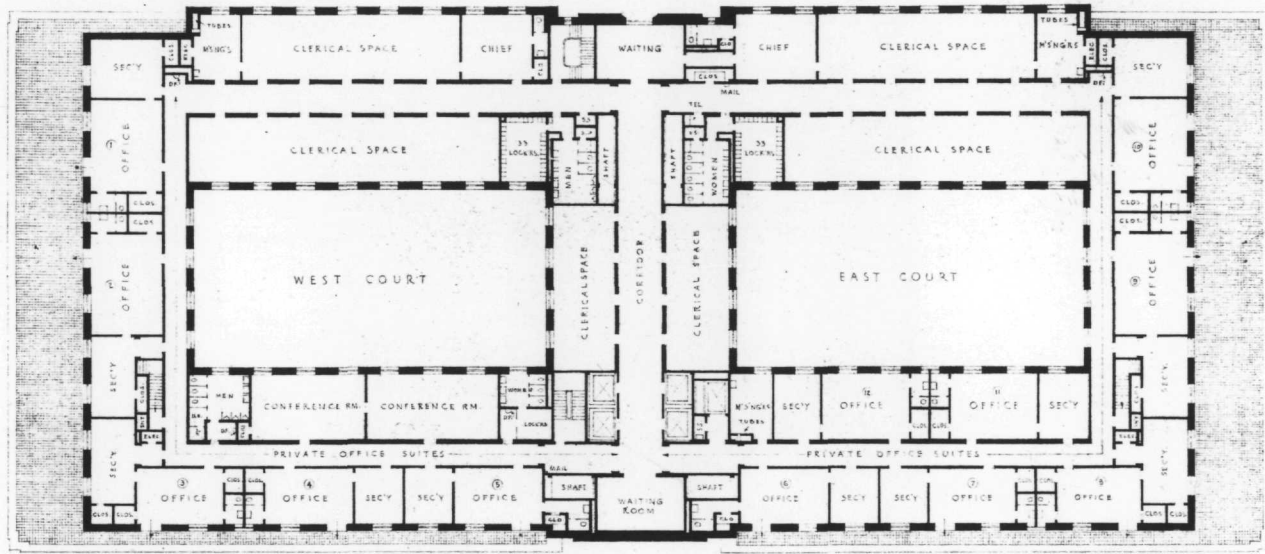
PAUL P. CRET ARCHITECT
 SHEET NO. 405-B SK.40



**PLOT PLAN
FEDERAL RESERVE BOARD
ADDITION**

PAUL P. CRET
ARCHITECT
N. E. 4th St., 17th & Sanson Sts.
PHILADELPHIA, PA.
SCALE: 1/8" = 1'-0"
DATE: 10/15/32
BY: J. H. D. DRAWN AND SET BY: M. S. P.





PAVED PROMENADE DECK

PAVED PROMENADE DECK

WORK AREA - 218'00" SQ. FT.

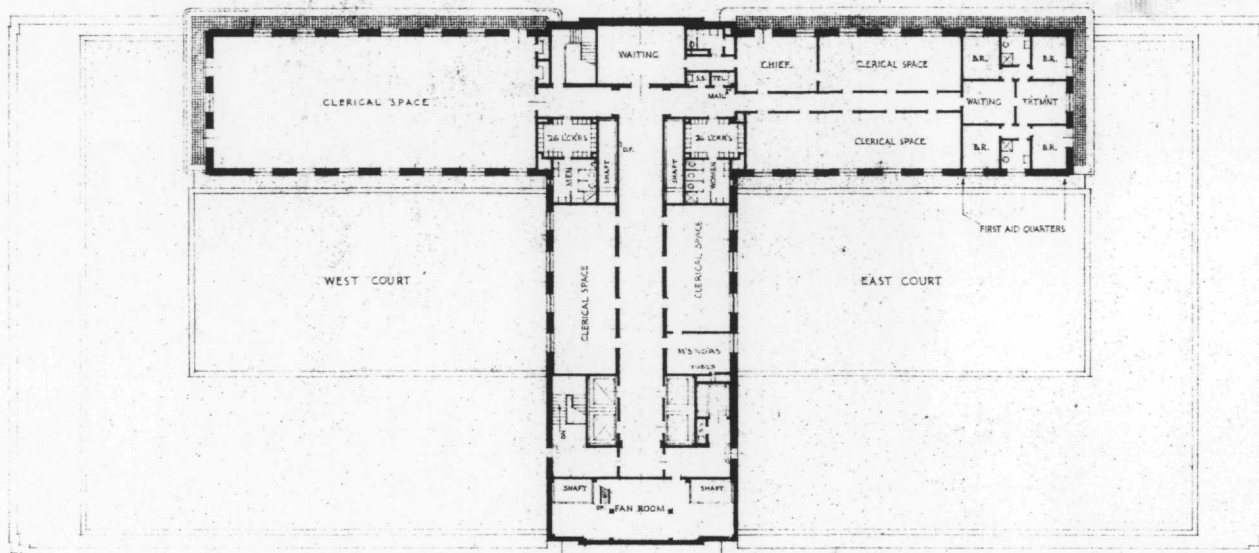
FIFTH FLOOR PLAN, REVISED 10/14/40
ADDITION TO FEDERAL RESERVE BOARD BUILDING
WASHINGTON - D. C.

ALTERNATE PLAN

OCTOBER 3RD 1940
SCALE 1/8" = 1'-0"

PAUL P. CRET ARCHITECT
SHEET NO 408-B SK 49





WORK AREA - 9700 SQ. FT.

SIXTH FLOOR PLAN -REVISED-
 ADDITION TO FEDERAL RESERVE BOARD BUILDING
 WASHINGTON, D. C.

ALTERNATE PLAN

AUGUST 29TH 1940 REVISED OCT. 3RD 40
 SCALE 1/4" = 1'-0" REVISED SEPT. 14, 40

PAUL P. CRET, ARCHITECT
 SHEET NO. 405-B, 5K.40