

FEDERAL RESERVE BANK OF KANSAS CITY: OFFICERS

CHAIRMEN

J. S. Miller, Jr.
10/6/14-1/4/16
Chas. M. Sawyer
1/4/16-12/31/17
Asa E. Ramsey
1/1/18-5/1/23
M. L. McClure
5/1/23-12/5/34
J. J. Thomas
2/10/36-12/31/38
Robt. B. Caldwell
1/1/39-12/31/52
Raymond W. Hall
1/1/53-

GOVERNOR (PRESIDENT)

Chas. M. Sawyer 10/16/14-1/4/16
J. Z. Miller, Jr. 1/4/16-7/1/22

W. J. Bailey 7/1/22-1/7/32
Geo. H. Hamilton 1/7/32-2/28/41
H. G. Leedy 8/28/41-

November
1954

FEDERAL RESERVE BANK OF KANSAS CITY - LIBRARY
Kansas City 6, Kansas

EST. 1920

LIBRARIAN: Mary Jane MacDonald

RESEARCH OFFICER: Clarence W. Tow, Vice President

LIBRARIAN REPORTS TO: Clarence W. Tow, Vice President

STAFF: Total - 2 Professional - 1

SERVES: Principally the officers and staff of the bank, but services are available to the public as well.

MATERIALS:

Volumes: 3,500

Pamphlets: Don't know

Added Annually: No count is kept.
Probably around 500.

Vertical file drawers: 44

Special Collections: None

PERIODICALS:

No. Received: 180 (excludes U. S.
Gov't documents received serially)

No. Bound: 45

Disposal of others: Have a destruction
schedule of from 1-10 years. Others
kept permanently unbound.

No. Newspapers: 26

No. Bound or on Microfilm: None

(over)

LIBRARY PUBLICATIONS: Monthly acquisitions list.

ANNUAL REPORT: No
Published: No

DESCRIPTION OF LIBRARY:

The Research Library was established for the use of the bank's officers and staff, but is also open to the public. It is one of the six units of the Research Department. The others are Finance, Agriculture, Industry, Statistics and Publications.

Since there is no other financial library in this area, it is necessary to maintain a larger collection of works on economic theory, statistics and agricultural economics than might otherwise be necessary. Besides economics, banking and finance, the collection stresses economic conditions in Tenth District states.

Each day the assistant clips items on employment, construction, industries, banks, etc., from district newspapers and routes them to the units interested in those topics.

The Library of Congress classification system is used.

Files - Federal Reserve Bank of Kansas City

Supervisor: Eunice Skinner

Reports to John T. Boysen, Cashier

Source: Questionnaires sent to Federal Reserve Bank Libraries, 11/54

FEDERAL RESERVE BANK OF KANSAS CITY

District No. 10
FOR THE YEAR 1914

DIRECTORS:

CLASS A:

Original (1914)

Term expires

Dec. 31, 1915

Dec. 31, 1916

Dec. 31, 1917

Gordon Jones, Denver, Colo.

W. J. Bailey, Atchison, Kansas

C. E. Burnham, Norfolk, Nebr.

CLASS B:

Dec. 31, 1916

Dec. 31, 1916

Dec. 31, 1917

Thomas C. Byrne, Omaha, Neb.

M. L. McClure, Kansas City, Mo.

L. A. Wilson, El Reno, Okla.

CLASS C:

Dec. 31, 1917

Dec. 31, 1916

Dec. 31, 1915

J. Z. Miller, Jr., Kansas City, Mo.

Asa E. Ramsay, Muskogee, Okla.

R. H. Malone, Denver, Colo.

Chmn. of Bd. and Fed. Res. Agent:

J. Z. Miller, Jr.

Vice Chmn. and Deputy Fed. Res. Agent

Asa E. Ramsay

Succesor

Governor: Charles M. Sawyer (10/16/14)

Secretary-Cashier: Jerome Thralls

Member, Federal Adgisory Council:

E. F. Swinney

Asst Fed. Res. Agent - C. M. A. Thompson Jan 31/1914
 Fred W. Fleming, C. B. Remondine Oct 12/1917
 Cashier - M. A. Thompson Oct 12/1917
 Deputy Gov. - J. L. Collins
 Secretary - Arthur W. Henderson Jr.
 Asst Cashier - C. A. Washington June 19/17

First Annual Report, Federal Reserve Board, for the
period ending Dec. 31, 1914.

FEDERAL RESERVE BANK OF KANSAS CITY: FOR THE YEAR 1915

DIRECTORS:

| | | | |
|----------|-------------------|------------------|--------------------------------|
| CLASS A: | Gordon Jones | Denver, Colo. |Term expired Dec. 31, 1915 |
| | W. J. Bailey | Atchison, Kansas | |
| | C. E. Burnham | Norfolk, Nebr. | |
| CLASS B: | Thomas C. Byrne | Omaha, Nebr. | |
| | M. L. McClure | Kansas City, Mo. | |
| | L. A. Wilson | El Reno, Okla. | Resigned effective 1/1/17 |
| CLASS C: | J. Z. Miller, Jr. | Kansas City, Mo. | |
| | Asa E. Ramsay | Muskogee, Okla. | |
| | R. H. Malone | Denver, Colo. | |

MEMBER, FEDERAL ADVISORY COUNCIL:

OFFICERS:

Fed. Res. Agent and Chairman of Board: J. Z. Miller, Jr.
Deputy Fed. Res. Agent and Vice Chairman: Asa E. Ramsay

Charles M. Sawyer, Secy.

Note: Kansas Bank opened for business Nov. 16, 1914.

Second Annual Report of the Federal Reserve Board for the Year Ending Dec.
31, 1915. Washington, 1916.

FEDERAL RESERVE BANK OF KANSAS CITY: FOR THE YEAR 1916

DIRECTORS:

| | | | |
|-----------------------------------|-------------------------------------------------------------------|------------------|---------------|
| CLASS A: | J. C. Mitchell | Denver, Colo. | Dec. 31, 1918 |
| | W. J. Bailey | Atchison, Kans. | Dec. 31, 1919 |
| | C. E. Burnham | Norfolk, Nebr. | Dec. 31, 1917 |
| CLASS B: | M. L. McClure | Kansas City, Mo. | Dec. 31, 1919 |
| | T. C. Byrne | Omaha, Nebr. | Dec. 31, 1918 |
| | Harry W. Gibson | Muskogee, Okla. | Dec. 31, 1917 |
| CLASS C: | Charles M. Sawyer | Kansas City, Mo. | Dec. 31, 1917 |
| | F. W. Fleming | Kansas City, Mo. | Dec. 31, 1919 |
| | R. H. Malone | Denver, Colo. | Dec. 31, 1918 |
| MEMBER, FEDERAL ADVISORY COUNCIL: | E. F. Swinney, President First National Bank, Kansas City, Mo. | | |

OFFICERS:

Chmn. and Fed. Res. Agent: Charles M. Sawyer
Deputy Chmn. and Dep. Res. Agent: F. W. Fleming

Governor: J. Z. Miller, Jr.

Asst. to Fed. Res. Agent: M. A. Thompson
(effective 2/1/16)

Secretary-Cashier: Arch W. Anderson
(succeeding Jerome Thralls who re-
signed effective 2/10/16)

Assistant to the Governor:
J. L. Cross

3rd Annual Report of the Federal Reserve Board Covering Operations for the
Year 1916. Washington, 1917

FEDERAL RESERVE BANK OF KANSAS CITY: FOR THE YEAR 1917

DIRECTORS:

| | | | |
|----------|-----------------|------------------|---------------|
| Class A: | J. C. Mitchell | Denver, Colo. | Dec. 31, 1918 |
| | W. J. Bailey | Atchison, Kansas | Dec. 31, 1919 |
| | D. E. Burnham | Norfolk, Nebr. | Dec. 31, 1920 |
| Class B: | M. L. McClure | Kansas City, Mo. | Dec. 31, 1919 |
| | T. C. Byrne | Omaha, Nebr. | Dec. 31, 1918 |
| | Harry W. Gibson | Muskogee, Okla. | Dec. 31, 1920 |
| Class C: | Asa E. Ramsay | Kansas City, Mo. | Dec. 31, 1920 |
| | F. W. Fleming | Kansas City, Mo. | Dec. 31, 1919 |
| | R. H. Malone | Denver, Colo. | Dec. 31, 1918 |

MEMBER, FEDERAL ADVISORY COUNCIL: E. F. Swinney
 Pres., First National Bank, Kansas City, Mo.

OFFICERS:

| | | | |
|-------------------------------|-------------------|-----------|-------------------|
| Chairman and Fed. Res. Agent: | Charles M. Sawyer | Governor: | J. Z. Miller, Jr. |
| Deputy Chairman: | F. W. Fleming | | |

4th Annual Report of the Federal Reserve Board Covering Operations for
 the Year 1917. Washington, 1918.

FEDERAL RESERVE BANK OF KANSAS CITY: FOR THE YEAR 1918

DIRECTORS:

| | | | |
|-------------------------------------------------|-----------------|------------------|---------------|
| CLASS A: | W. J. Bailey | Atchson, Kansas | Dec. 31, 1919 |
| | C. E. Burnham | Norfolk, Nebr. | Dec. 31, 1920 |
| | J. C. Mitchell | Denver, Colo | Dec. 31, 1921 |
| CLASS B: | T. C. Byrne | Omaha, Nebr. | Dec. 31, 1921 |
| | Harry W. Gibson | Muskogee, Okla. | Dec. 31, 1920 |
| | M. L. McClure | Kansas City, Mo. | Dec. 31, 1919 |
| CLASS C: | F. W. Fleming | Kansas City, Mo. | Dec. 31, 1919 |
| | Asa E. Ramsay | Kansas City, Mo. | Dec. 31, 1920 |
| | R. H. Malone | Denver, Colo. | Dec. 31, 1921 |
| MEMBER, FEDERAL ADVISORY COUNCIL: E. F. SWINNEY | | | |

OFFICERS:

| | | |
|----------------------------|----------------|-------------------------------------|
| Chmn. and Fed. Res. Agent: | Asa E. Ramsay | Governor: J. Z. Miller, Jr. |
| Deputy Chairman: | F. W. Fleming | Deputy Governor: J. L. Cross |
| | | Secretary-Cashier: Arch W. Anderson |
| Asst. Fed. Res. Agent: | C. K. Boardman | Asst. Cashiers: C. A. Worthington |
| | | M. A. Thompson* |
| Acting Auditor: | S. A. Wardell | |

Fourth Annual Report, Federal Reserve Bank
of Kansas City (for year ended Dec. 31, 1918).

*resigned Oct. 1, 1918

Acting Assistant Cashiers:

6/27/18 E. P. Tyner; 9/16/18: J.W. Helm,
L. H. Earhart, John Phillips, Jr.

FEDERAL RESERVE BANK OF KANSAS CITY: FOR THE YEAR 1919

DIRECTORS:

| | | | |
|-----------------------------------|---------------------------------------|------------------|---------------|
| CLASS A: | C. E. Burnham | Norfolk, Nebr. | Dec. 31, 1920 |
| | J. C. Mitchell | Denver, Colo. | Dec. 31, 1921 |
| | W. J. Bailey | Atchison, Kans. | Dec. 31, 1922 |
| CLASS B: | Harry W. Gibson | Muskogee, Okla. | Dec. 31, 1920 |
| | T. C. Byrne | Omaha, Nebr. | Dec. 31, 1921 |
| | M. L. McClure | Kansas City, Mo. | Dec. 31, 1922 |
| CLASS C: | Asa E. Ramsay | Kansas City, Mo. | Dec. 31, 1920 |
| | R. H. Malone | Denver, Colo. | Dec. 31, 1921 |
| | F. W. Fleming | Kansas City, Mo. | Dec. 31, 1922 |
| MEMBER, FEDERAL ADVISORY COUNCIL: | E. F. Swinney, President | | |
| | First National Bank, Kansas City, Mo. | | |

OFFICERS:

| | | | |
|--------------------------------------|---------------|---------------------------|-------------------|
| Chmn. and Fed. Reserve Agent: | Asa E. Ramsay | Governor: | J. Z. Miller, Jr. |
| Deputy Chairman: | F. W. Fleming | | |
| Asst. Fed. Res. Agent and Secretary: | C.K. Boardman | Asst. to the Governor: | C.A. Worthington |
| | | Acting Cashier: | J. W. Helm |
| | | Asst. Cashier and Mgr. of | |
| | | Fiscal Agency Dept.: | John Philips, Jr. |
| | | Asst. Cashier and Mgr., | |
| | | Transit Dept.: | E. P. Tyner |

Sixth Annual Report of the Federal Reserve Board Covering Operations for the Year 1919. Washington, 1920.

| | | | | | |
|----------|---------------|----------------|----------|-----------------------------------------|---------------|
| Auditor: | S. A. Wardell | Asst. Auditor: | A.E.Bolt | Asst. Cashier, Acctg. & Analysis Dept.: | L. H. Earhart |
| | | | | Asst. Cashier | G. E. Barley |

Re-election of Directors for 3-year term

W. J. Bailey Class A

M. L. McClure Class B

Re-appointment to Fed. Adv. Council: E. F. Swinney

Changes in Staff during 1919:

Resignation of Deputy Governor J. L. Cross to join an eastern bank , effective 3/1/19

3/1/19 C. A. Worthington, formerly Asst. Cashier, was elected Asst. to the Governor

5/1/19 Resignation of Arch W. Anderson, Secretary-Cashier, to engage in commercial business; J. W. Helm, formerly Asst. Cashier, was elected Acting Cashier.

C. K. Boardman, in addition to serving as Asst. Fed. Res. Agent, was elected Secretary

FEDERAL RESERVE BANK OF KANSAS CITY: FOR THE YEAR 1920

DIRECTORS:

| | | | |
|-----------------------------------|---------------------------------------|------------------|---------------|
| CLASS A: | J. C. Mitchell | Denver, Colo. | Dec. 31, 1921 |
| | W. J. Bailey | Atchison, Kans. | Dec. 31, 1922 |
| | E. E. Mullaney | Hill City, Kans. | Dec. 21, 1923 |
| CLASS B: | T. C. Byrne | Omaha, Nebr. | Dec. 31, 1921 |
| | M. L. McClure | Kansas City, Mo. | Dec. 31, 1922 |
| | Harry W. Gibson | Muskogee, Okla. | Dec. 31, 1923 |
| CLASS C: | R. H. Malone | Denver, Colo. | Dec. 31, 1921 |
| | F. W. Fleming | Kansas City, Mo. | Dec. 31, 1922 |
| | Asa E. Ramsay | Kansas City, Mo. | Dec. 31, 1923 |
| MEMBER, FEDERAL ADVISORY COUNCIL: | E. F. Swinney, President, | | |
| | First National Bank, Kansas City, Mo. | | |

OFFICERS:

| | | | |
|----------------------------|---------------|------------------------|-------------------|
| Chmn. and Fed. Res. Agent: | Asa E. Ramsay | Governor: | J. Z. Miller, Jr. |
| Deputy Chairman: | F. W. Fleming | Deputy Governor: | |
| Asst. Fed. Res. Agent | | Asst. to the Governor: | |
| Secretary: | | Cashier: | |
| | | Assistant Cashiers: | |

7th Annual Report, Federal Reserve Board, Covering Operations for the Year 1920. Washington, 1921.

Expiration on Dec. 31, 1920 of terms of

C. E. Burnham Class A ineligible for re-election successor: E. E. Mullaney

H. W. Gibson Class B re-elected for 3 years from Jan. 1, 1921.

Re-appointment of Asa E. Ramsay as Class C Director for 3 years from Dec. 31, 1923
(redesignation as Chairman and F. W. Fleming redesignated for 1921 as
Deputy Chairman)

FEDERAL RESERVE BANK OF KANSAS CITY: FOR THE YEAR 1921

DIRECTORS:

| | | | |
|-----------------------------------|--------------------------|---------------------------------------|----------------|
| CLASS A: | W. J. Bailey | Atchison, Kansas | Dec. 31, 1922 |
| | E. E. Mullaney | Hill City, Kansas | Dec. 31, 1923 |
| | J. C. Mitchell | Denver, Colo. | Dec. 31, 1924. |
| CLASS B: | M. L. McClure | Kansas City, Mo. | Dec. 31, 1922 |
| | H. W. Gibson | Muskogee, Okla. | Dec. 31, 1923 |
| | Thomas C. Byrne | Omaha, Nebr. | Dec. 31, 1924 |
| CLASS C: | Fred W. Fleming | Kansas City, Mo. | Dec. 31, 1922 |
| | Asa E. Ramsay | Kansas City, Mo. | Dec. 31, 1923 |
| | Heber Hord | Central City, Nebr. | Dec. 31, 1924 |
| MEMBER, FEDERAL ADVISORY COUNCIL: | E. F. Swinney, President | | |
| | | First National Bank, Kansas City, Mo. | |

OFFICERS:

| | | | |
|----------------------------------|---------------|-----------|-------------------|
| Chairman and Federal Res. Agent: | Asa E. Ramsay | Governor: | J. Z. Miller, Jr. |
| Deputy Chairman: | Heber Hord | | |

FEDERAL RESERVE BANK OF KANSAS CITY: FOR YEAR 1922

DIRECTORS:

| | | |
|----------|-----------------------------------|----------|
| CLASS A: | W. J. Bailey, Atchison, Kan. | 12/31/22 |
| | E. E. Mullaney, Hill City, Kan. | 12/31/23 |
| | J. C. Mitchell, Denver, Colo. | 12/31/24 |
| CLASS B: | M. L. McClure, Kansas City, Mo. | 12/31/22 |
| | H. W. Gibson, Muskogee, Okla. | 12/31/23 |
| | Thomas C. Byrne, Omaha, Neb. | 12/31/24 |
| CLASS C: | Fred W. Fleming, Kansas City, Mo. | 12/31/22 |
| | Asa E. Ramsay, Kansas City, Mo. | 12/31/23 |
| | Heber Hord, Central City, Neb. | 12/31/24 |

MEMBER, FEDERAL ADVISORY COUNCIL: E. F. Swinney, Kansas City, Mo.

OFFICERS:

| | |
|--------------------------------------------|-------------------|
| Chairman of Bd. and Federal Reserve Agent: | Asa E. Ramsay |
| Deputy Chairman: | Heber Hord |
| Asst. Fed. Res. Agent and Secretary: | C. K. Boardman |
| Auditor: | S. A. Wardell |
| Asst. Auditor: | A. E. Bolt |
| Asst. Auditor: | T. Gordon Sanders |
| Asst. Auditor: | H. H. Rhodes |
| Counsel: | James E. Goodrich |

| | |
|------------------|-------------------|
| Governor: | J. Z. Miller, Jr. |
| Deputy Governor: | C. A. Worthington |
| Cashier: | J. W. Helm |

Assistant Cashiers:

John Phillips, Jr.

A. G. Frost

E. P. Tyner

A. M. McAdams

G. E. Barley

G. H. Pipkin

M. W. E. Park

Changes during 1921:

Reappointed for 3-year term: Asa E. Ramsay; Heber Hord

Reelected for 3-year term: J. C. Mitchell; Thomas C. Byrne

FEDERAL RESERVE BANK OF KANSAS CITY: FOR THE YEAR 1923

DIRECTORS:

| | | |
|----------|---------------------------------|----------|
| CLASS A: | E. E. Mullaney, Hill City, Kan. | 12/31/23 |
| | J. C. Mitchell, Denver, Colo. | 12/31/24 |
| | Frank W. Sponable, Paola, Kan. | 12/31/25 |
| CLASS B: | H. W. Gibson, Muskogee, Okla. | 12/31/23 |
| | Thomas C. Byrne, Omaha, Neb. | 12/31/24 |
| | M. L. McClure, Kansas City, Mo. | 12/31/25 |
| CLASS C: | Asa E. Ramsay, Kansas City, Mo. | 12/31/23 |
| | Heber Hord, Central City, Neb. | 12/31/24 |
| | Fred O. Roof, Denver, Colo. | 12/31/25 |

MEMBER, FEDERAL ADVISORY COUNCIL: E. F. Swinney, Kansas City, Mo.

OFFICERS:

| | |
|-------------------------------------|-------------------|
| Chairman and Federal Reserve Agent: | Asa E. Ramsay |
| Deputy Chairman: | Heber Hord |
| Asst. Federal Reserve Agent: | C. K. Boardman |
| Auditor: | S. A. Wardell |
| Asst. Auditor: | T. Gordon Sanders |
| | A. E. Bolt |
| | H. H. Rhodes |
| Counsel: | James E. Goodrich |
| GOVERNOR: | W. J. Bailey |
| DEPUTY GOVERNOR: | C. A. Worthington |
| CASHIER: | J. W. Helm |

ASSISTANT CASHIERS:

John Phillips, Jr.

E. P. Tyner

G. E. Barley

M. W. E. Park

A. G. Frost

A. M. McAdams

G. H. Pipkin

CHANGES DURING 1922:

J. Z. MILLER, JR., resigned as GOVERNOR OF THE BANK, effective JULY 1, 1922, and was succeeded by Director W. J. Bailey, who also served as Director for the remainder of his term, which expired Dec. 31, 1922.

FRED O. ROOF, Denver, Colo., appointed Class C Director for a 3-year term, to succeed Fred W. Fleming, whose term expired Dec. 31, 1922.

Re-election of M. L. McCLURE as Class B Director for 3 -year term.

Election of FRANK W. SPONABLE of Paola, Kansas, as Class A Director to succeed W. J. Bailey, for a 3-year term.

FEDERAL RESERVE BANK OF KANSAS CITY: FOR YEAR 1924

DIRECTORS:

| | | |
|----------|-----------------------------------|------|
| CLASS A: | J. C. Mitchell, Denver, Colo. | 1924 |
| | Frank W. Sponable, Paola, Kan. | 1925 |
| | E. E. Mullaney, Hill City, Kan. | 1926 |
| CLASS B: | Thomas C. Byrne, Omaha, Neb. | 1924 |
| | J. M. Bernardin, Kansas City, Mo. | 1925 |
| | H. W. Gibson, Muskogee, Okla. | 1926 |
| CLASS C: | Heber Hord, Central City, Neb. | 1924 |
| | Fred O. Roof, Denver, Colo. | 1925 |
| | M. L. McClure, Kansas City, Mo. | 1926 |

MEMBER, FEDERAL ADVISORY COUNCIL: E. F. Swinney, Kansas City, Mo.

OFFICERS:

| | | | |
|--------------------------------------|-------------------|--------------------|-------------------|
| Chairman and Fed. Res. Agent: | M. L. McClure | Governor: | W. J. Bailey |
| Deputy Chairman: | Heber Hord | Deputy Governor: | C. A. Worthington |
| Asst. Fed. Res. Agent and Secretary: | C.K. Boardman | Cashier: | J. W. Helm |
| Auditor: | S. A. Wardell | Asst. Cashiers: | |
| Asst. Auditor: | A. E. Bolt | John Phillips, Jr. | M.W.E. Park |
| " " | H. H. Rhodes | E.P. Tyner | A.G. Frost |
| Counsel: | James E. Goodrich | G.E. Barley | A.M. McAdams |
| | | G. H. Pipkin | |

CHANGES DURING 1923:

ASA E. RAMSAY resigned as Chairman of Board of Directors and Federal Reserve Agent, effective May 1, 1923, and was succeeded by M. L. McClure for the unexpired term to December 31, 1923. The Board reappointed M. L. McCLURE as Class C Director for 3-year term from Jan. 1, 1924, and reappointed him as Chairman of Bd. and Federal Reserve Agent.

Re-election for 3 year term from Jan. 1, 1924:

E. E. Mullaney

Class A Director

H. W. Gibson

Class B Director

E.F. Swinney reappointed member of Federal Advisory Council; James E. Goodrich renamed Counsel of the Bank until such a time as his successor could be appointed.

Staff Changes:

Resignation of C.A. Burkhardt, Mgr. of Denver Branch, effective June 15, 1923.

J.E. Olson promoted from Cashier to Manager.

A.J. Conway promoted from Asst. Cashier to Cashier.

John A. Cronan was promoted to Asst. Cashier.

Transfer of T. Gordon Sanders, Asst. Auditor of head office to Omaha Branch.

FEDERAL RESERVE BANK OF KANSAS CITY
FOR YEAR 1925

DIRECTORS:

| | | |
|------------------------------------------------------------------|-----------------------------------|------|
| CLASS A: | Frank W. Sponable, Paola, Kansas | 1925 |
| | E. E. Mullaney, Hill City, Kansas | 1926 |
| | J. C. Mitchell, Denver, Colo. | 1927 |
| CLASS B: | J. M. Bernardin, Kansas City, Mo. | 1925 |
| | A. W. Gibson, Muskogee, Okla. | 1926 |
| | Thomas C. Byrne, Omaha, Neb. | 1927 |
| CLASS C: | Fred O. Roof, Denver, Colo. | 1925 |
| | M. L. McClure, Kansas City, Mo. | 1926 |
| | Heber Hord, Central City, Neb. | 1927 |
| MEMBER, FEDERAL ADVISORY COUNCIL: E. F. Winney, Kansas City, Mo. | | |

OFFICERS:

| | | | |
|----------------------------|---------------|---------------------|-------------------|
| Chmn. and Fed. Res. Agent: | M. L. McClure | Governor: | W. J. Bailey |
| Deputy Chairman: | Heber Hord | Dep. Gov.: | C. A. Worthington |
| Asst. Fed. Res. Agent and | | Cashier: | J. W. Helm |
| Secretary: | C.K. Boardman | Assistant Cashiers: | |
| Auditor: | S. A. Wardell | John Phillips, Jr. | M.W.E. Park |
| Assistant Auditor: | A. E. Bolt | E. P. Tyner | A. M. McAdams |
| Counsel: | H. G. Leedy | G. E. Barley | G. H. Pipkin |

Re-appointment of Heber Hoard as Class C Director for 3 years (redesignation as Deputy Chairman of Board for 1924

Re-election of- for 3 year term from Jan. 1, 1925:

J. C. Mitchell Class A

Thos. C. Byrne Class B

Directorates of branches increased from 5 to 7 members.

Resignation of George E. Abbot as Director of Omaha Branch; succeeded by A. H. Marble

Numerous other changes in Branches

FEDERAL RESERVE BANK OF KANSAS CITY: FOR THE YEAR 1926

DIRECTORS:

| | | | |
|-----------------------------------|------------------------------|---------------------|---------------|
| CLASS A: | C. G. Parks | Denver, Colo. | Dec. 31, 1927 |
| | Frank W. Sponable | Paola, Kansas | Dec. 31, 1928 |
| | E. E. Mullaney | Hill City, Kansas | Dec. 31, 1929 |
| CLASS B: | Thomas C. Byrne | Omaha, Nebr. | Dec. 31, 1927 |
| | J. M. Bernardin | Kansas City, Mo. | Dec. 31, 1928 |
| | L. E. Phillips | Bartlesville, Okla. | Dec. 31, 1929 |
| CLASS C: | Heber Hord | Central City, Nebr. | Dec. 31, 1927 |
| | William L. Petrikin | Denver, Colo. | Dec. 31, 1928 |
| | M. L. McClure | Kansas City, Mo. | Dec. 31, 1929 |
| MEMBER, FEDERAL ADVISORY COUNCIL: | Peter W. Goebel | | |
| | Pres., Liberty National Bank | | |
| | Kansas City, Mo. | | |

OFFICERS

| | | | |
|-------------------------------|---------------|-----------|--------------|
| CHAIRMAN AND FED. RES. AGENT: | M. L. McClure | Governor: | W. J. Bailey |
| Deputy Chairman: | Heber Hord | | |

13th Annual Report of the Federal Reserve Board Covering Operations for the Year 1926. Washington, 1927.

FEDERAL RESERVE BANK OF KANSAS CITY: FOR THE YEAR 1927

DIRECTORS:

| | | | |
|-----------------------------------|-----------------------------------------------------------------------|---------------------|----------------|
| CLASS A: | Frank W. Sponable | Paola, Kansas | Dec. 31, 1928 |
| | E. E. Mullaney | Hill City, Kansas | Dec. 31, 1929 |
| | C. C. Parks | Denver, Colo. | Dec. 31, 1930. |
| CLASS B: | J. M. Bernardin | Kansas City, Mo. | Dec. 31, 1928 |
| | L. E. Phillips | Bartlesville, Okla. | Dec. 31, 1929 |
| | Thomas C. Byrne | Omaha, Nebr. | Dec. 31, 1930 |
| CLASS C: | Wm. L. Petrikin | Denver, Colo. | Dec. 31, 1928 |
| | M. L. McClure | Kansas City, Mo. | Dec. 31, 1929 |
| | E. M. Brass | Grand Island, Nebr. | Dec. 31, 1930 |
| MEMBER, FEDERAL ADVISORY COUNCIL: | Peter W. Goebel, President Liberty National Bank, Kansas City, Mo. | | |

OFFICERS:

Chmn. and Fed. Res. Agent: M. L. McClure Governor: W. J. Bailey
Deputy Chairman: Wm. L. Petrikin

14th Annual Report of the Federal Reserve Board Covering Operations for the Year
1927. Washington, 1928.

FEDERAL RESERVE BANK OF KANSAS CITY: FOR THE YEAR 1928

DIRECTORS:

| | | | |
|----------|-------------------|---------------------|---------------|
| CLASS A: | E. E. Mullaney | Hill City, Kans. | Dec. 31, 1929 |
| | C. C. Parks | Denver, Colo. | Dec. 31, 1930 |
| | Frank W. Sponable | Paola, Kans. | Dec. 31, 1931 |
| CLASS B: | L. E. Phillips | Bartlesville, Okla. | Dec. 31, 1929 |
| | Thomas C. Byrne | Omaha, Nebr. | Dec. 31, 1930 |
| | J. M. Bernardin | Kansas City, Mo. | Dec. 31, 1931 |
| CLASS C: | M. L. McClure | Kansas City, Mo. | Dec. 31, 1929 |
| | E. M. Brass | Grand Island, Nebr. | Dec. 31, 1930 |
| | Wm. L. Petrikin | Denver, Colo. | Dec. 31, 1931 |

MEMBER, FEDERAL ADVISORY COUNCIL: Peter W. Goebel, President
Liberty National Bank, Kansas City, Mo.

OFFICERS:

| | | | |
|----------------------------|-----------------|------------------|--------------|
| Chmn. and Fed. Res. Agent: | Mrs. L. McClure | Governor: | W. J. Bailey |
| Deputy Chairman: | Wm. L. Petrikin | Deputy Governor: | |

15th Annual Report of the Federal Reserve Board Covering Operations for the Year 1928.
Washington, 1929.

FEDERAL RESERVE BANK OF KANSAS CITY: FOR THE YEAR 1929

DIRECTORS:

| | | | |
|----------|---------------------|------------------------|----------------|
| CLASS A: | E. E. Mullaney | Hill City, Kansas | Dec. 31, 1929 |
| | C. C. Parks | Denver, Colo. | Dec. 31, 1930 |
| | Frank W. Sponable | Paola, Kansas | Dec. 31, 1931 |
| CLASS B: | L. E. Phillips | Bartlesville, Okla. | Dec. 31, 1929 |
| | Thomas C. Byrne | Omaha, Nebr. | Dec. 31, 1930 |
| | J. M. Bernardin | Kansas City, Mo. | Dec. 31, 1931. |
| CLASS C: | M. L. McClure | Kansas City, Mo. | Dec. 31, 1929 |
| | E. M. Brass | Grand Island, Nebraska | Dec. 31, 1930 |
| | William L. Petrikin | Denver, Colo. | Dec. 31, 1931 |

MEMBER, FEDERAL ADVISORY COUNCIL: Peter W. Goebel, President, Liberty National Bank,
Kansas City, Mo.

OFFICERS

| | | | |
|-------------------------------|-----------------|-----------|--------------|
| Chairman and Fed. Res. Agent: | M. L. McClure | Governor: | W. J. Bailey |
| Deputy Chairman: | Wm. L. Petrikin | | |

16th Annual Report of the Federal Reserve Board covering operations for the Year 1929.
Washington, 1930.

FEDERAL RESERVE BANK OF KANSAS CITY: FOR THE YEAR 1930

DIRECTORS:

| | | | |
|----------|---------------------|---------------------|---------------|
| CLASS A: | C. C. Parks | Denver, Colo. | Dec. 31, 1930 |
| | Frank W. Sponable | Paola, Kans. | Dec. 31, 1931 |
| | E. E. Mullaney | Hill City, Kans. | Dec. 31, 1932 |
| CLASS B: | W. D. Hosford | Omaha, Nebr. | Dec. 31, 1930 |
| | J. M. Bernardin | Kansas City, Mo. | Dec. 31, 1931 |
| | L. E. Phillips | Bartlesville, Okla. | Dec. 31, 1932 |
| CLASS C: | W. W. Magee | Bennington, Nebr. | Dec. 31, 1930 |
| | William L. Petrikin | Denver, Colo. | Dec. 31, 1931 |
| | M. L. McClure | Kansas City, Mo. | Dec. 31, 1932 |

MEMBER, FEDERAL ADVISORY COUNCIL: Walter S. McLucas, Chairman
Commerce Trust Co., Kansas City, Mo.

OFFICERS:

| | | | |
|----------------------------|-----------------|-----------|--------------|
| Chmn. and Fed. Res. Agent: | M. L. McClure | Governor: | W. J. Bailey |
| Deputy Chairman: | Wm. L. Petrikin | | |

17th Annual Report of the Federal Reserve Board Covering Operations for the Year 1930.
Washington, 1931.

FEDERAL RESERVE BANK OF KANSAS CITY: FOR THE YEAR 1931

DIRECTORS:

| | | | |
|----------|---------------------|---------------------|---------------|
| CLASS A: | Frank W. Sponable | Paola, Kans. | Dec. 31, 1931 |
| | E. E. Mullaney | Hill City, Kans. | Dec. 31, 1932 |
| | C. C. Parks | Denver, Colo. | Dec. 31, 1933 |
| CLASS B: | J. M. Bernardin | Kansas City, Mo. | Dec. 31, 1931 |
| | L. E. Phillips | Bartlesville, Okla. | Dec. 31, 1932 |
| | Willard D. Hosford | Omaha, Nebr. | Dec. 31, 1933 |
| CLASS C: | William L. Petrikin | Denver, Colo. | Dec. 31, 1931 |
| | M. L. McClure | Kansas City, Mo. | Dec. 31, 1932 |
| | Edward P. Brown | Davey, Nebr. | Dec. 31, 1933 |

MEMBER, FEDERAL ADVISORY COUNCIL: Walter S. McLucas, Chairman,
Commerce Trust Co., Kansas City, Mo.

OFFICERS:

| | | | |
|----------------------------|-----------------|-----------|--------------|
| Chmn. and Fed. Res. Agent: | M. L. McClure | Governor: | W. J. Bailey |
| Deputy Chairman: | Wm. L. Petrikin | | |

18th Annual Report of the Federal Reserve Board Covering Operations for the Year 1931.
Washington, 1932.

FEDERAL RESERVE BANK OF KANSAS CITY:

FOR THE YEAR 1932

DIRECTORS:

| | | | |
|-----------------------------------|-------------------------------|---------------------|----------------|
| CLASS A: | E. E. Mullaney | Hill City, Kansas | 12/31/32 |
| | C. C. Parks | Denver, Colo. | 12/31/33 |
| | F. W. Sponable | Paola, Kansas | 12/31/34 |
| CLASS B: | L. E. Phillips | Bartlesville, Okla. | 12/31/32 |
| | W. D. Hosford | Omaha, Nebr. | 12/31/33 |
| | J. M. Bernardin | Kansas City, Mo. | 12/31/34 |
| CLASS C: | M. L. McClure | Kansas City, Mo. | 12/31/32 |
| | E. P. Brown | Davey, Nebr. | 12/31/33 |
| | H. M. Langworthy | Kansas City, Mo. | 12/31/34 |
| MEMBER, FEDERAL ADVISORY COUNCIL: | Walter S. McLucas | | |
| | Chairman, Commerce Trust Co., | Kansas City, Mo. | |
| | OFFICERS: | | |
| Chairman and Fed. Res. Agent: | M. L. McClure | Governor: | G. H. Hamilton |
| Deputy Chairman: | H. M. Langworthy | | |

19th Annual Report, Federal Reserve Board, Covering Operations for the Year 1932.
Washington, 1933

FEDERAL RESERVE BANK OF KANSAS CITY: FOR THE YEAR 1933

DIRECTORS:

| | | | |
|----------|-----------------|---------------------|---------------|
| CLASS A: | C. C. Parks | Denver, Colo. | Dec. 31, 1933 |
| | F. W. Sponable | Paola, Kans. | Dec. 31, 1934 |
| | E. E. Mullaney | Collyer, Kans. | Dec. 31, 1935 |
| CLASS B: | W. D. Hosford | Omaha, Nebr. | Dec. 31, 1933 |
| | J. M. Bernardin | Kansas City, Mo. | Dec. 31, 1934 |
| | L. E. Phillips | Bartlesville, Okla. | Dec. 31, 1935 |
| CLASS C: | E. P. Brown | Davey, Nebr. | Dec. 31, 1933 |
| | J. B. Doolin | Alva, Okla. | Dec. 31, 1934 |
| | M. L. McClure | Kansas City, Mo. | Dec. 31, 1935 |

MEMBER, FEDERAL ADVISORY COUNCIL: W. T. Kemper, Chairman
Commerce Trust Co., Kansas City, Mo.

OFFICERS:

| | | | |
|----------------------------|---------------|------------------|----------------|
| Chmn. and Fed. Res. Agent: | M. L. McClure | Governor: | G. H. Hamilton |
| Deputy Chairman: | J. B. Doolin | Deputy Governor: | |

20th Annual Report of the Federal Reserve Board Covering Operations for the Year 1933.
Washington, 1934.

FEDERAL RESERVE BANK OF KANSAS CITY: FOR THE YEAR 1934

DIRECTORS:

| | | | |
|-----------------------------------|------------------------|--------------------|---------------|
| CLASS A: | F. W. Sponable | Paola, Kansas | Dec. 31, 1934 |
| | E. E. Mullaney | Collyer, Kansas | Dec. 31, 1935 |
| | C. C. Parks | Denver, Colo. | Dec. 31, 1936 |
| CLASS B: | J. M. Bernardin | Kansas City, Mo. | Dec. 31, 1934 |
| | L. E. Phillips | Bartlesville Okla. | Dec. 31, 1935 |
| | W. D. Hosford | Omaha, Nebr. | Dec. 31, 1936 |
| CLASS C: | J. B. Doolin | Alva, Okla. | Dec. 31, 1934 |
| | Vacancy | | |
| | E. P. Brown | Davey, Nebr. | Dec. 31, 1936 |
| MEMBER, FEDERAL ADVISORY COUNCIL: | W. T. Kemper, Chairman | | |
| | Commerce Trust Co. | | |
| | Kansas City, Mo. | | |

OFFICERS:

| | | | |
|-------------------------------|-------------|-----------|----------------|
| CHAIRMAN AND FED. RES. AGENT: | Vacant | Governor: | G. H. Hamilton |
| Deputy Chairman: | E. P. Brown | | |

21st Annual Report of the Federal Reserve Board, Covering Operations
for the Year.1934. Washington, 1935.

FEDERAL RESERVE BANK OF KANSAS CITY: FOR THE YEAR 1935

DIRECTORS:

| | | | |
|-----------------------------------|----------------------------------------------------------------|---------------------|---------------|
| CLASS A: | E. E. Mullaney | Collyer, Kans. | Dec. 31, 1935 |
| | C. C. Parks | Denver, Colo. | Dec. 31, 1936 |
| | Frank W. Sponable | Paola, Kans. | Dec. 31, 1937 |
| CLASS B: | L. E. Phillips | Bartlesville, Okla. | Dec. 31, 1935 |
| | W. D. Hosford | Omaha, Nebr. | Dec. 31, 1936 |
| | J. M. Bernardin | Kansas City, Mo. | Dec. 31, 1937 |
| CLASS C: | Vacancy | | Dec. 31, 1935 |
| | E. P. Brown | Davey, Nebr. | Dec. 31, 1936 |
| | J. B. Doolin | Alva, Okla. | Dec. 31, 1937 |
| MEMBER, FEDERAL ADVISORY COUNCIL: | W. T. Kemper, Chairman Commerce Trust Co., Kansas City, Mo. | | |

OFFICERS:

| | | | |
|----------------------------|-------------|-----------|----------------|
| Chmn. and Fed. Res. Agent: | Vacant | Governor: | G. H. Hamilton |
| Deputy Chairman: | E. P. Brown | | |

22nd Annual Report of the Board of Governors of the Federal Reserve System Covering Operations
for the Year 1935. Washington, 1936

FEDERAL RESERVE BANK OF KANSAS CITY: FOR THE YEAR 1936

DIRECTORS:

| | | | |
|-----------------------------------|-----------------|--------------------------------------|----------------|
| CLASS A: | C. C. Parks | Denver, Colo. | Dec. 31, 1936 |
| | F. W. Sponable | Paola, Kans. | D. c. 31, 1937 |
| | E. E. Mullaney | Hill City, Kans. | Dec. 31, 1938 |
| CLASS B: | W. D. Hosford | Omaha, Nebr. | Dec. 31, 1936 |
| | J. M. Bernardin | Kansas City, Mo. | Dec. 31, 1937 |
| | L. E. Phillips | Bartlesville, Okla. | Dec. 31, 1938 |
| CLASS C: | E. P. Brown | Davey, Nebr. | Dec. 31, 1936 |
| | J. B. Doolin | Alva, Okla. | Dec. 31, 1937 |
| | J. J. Thomas | Kansas City, Mo. | Dec. 31, 1938 |
| MEMBER, FEDERAL ADVISORY COUNCIL: | | W. T. Kemper, Chairman | |
| | | Commerce Trust Co., Kansas City, Mo. | |

OFFICERS:

| | | | |
|----------------------------|--------------|-----------------|-------------------|
| Chmn. and Fed. Res. Agent: | J. J. Thomas | President: | G. H. Hamilton |
| Deputy Chairman: | E. P. Brown | 1st Vice Pres.: | C. A. Worthington |

Note: at end-1936 change of title President in lieu of Governor

23rd Annual Report of the Board of Governors of the Federal Reserve System Covering Operations
for the Year 1936. Washington, 1937.

FEDERAL RESERVE BANK OF KANSAS CITY: FOR THE YEAR 1937

DIRECTORS:

| | | | |
|-----------------------------------|--------------------------------------|---------------------|---------------|
| CLASS A: | F. W. Sponable | Paola, Kansas | Dec. 31, 1937 |
| | E. E. Mullaney | Hill City, Kansas | Dec. 31, 1938 |
| | John Evans | Denver, Colo. | Dec. 31, 1939 |
| CLASS B: | J. M. Bernardin | Kansas City, Mo. | Dec. 31, 1937 |
| | L. E. Philips | Bartlesville, Okla. | Dec. 31, 1938 |
| | W. D. Hosford | Omaha, Nebr. | Dec. 31, 1939 |
| CLASS C: | J. B. Doolin | Alva, Okla. | Dec. 31, 1937 |
| | J. J. Thomas | Kansas City, Mo. | Dec. 31, 1938 |
| | E. P. Brown | Davey, Nebr. | Dec. 31, 1939 |
| MEMBER, FEDERAL ADVISORY COUNCIL: | W. T. Kemper, Chairman | | |
| | Commerce Trust Co., Kansas City, Mo. | | |

OFFICERS:

| | | | |
|----------------------------|--------------|------------|----------------|
| Chmn. and Fed. Res. Agent: | J. J. Thomas | President: | G. H. Hamilton |
| Deputy Chairman: | E. P. Brown | | |

24th Annual Report of the Board of Governors of the Federal Reserve System Covering
Operations for the Year 1937. Washington, 1938.

FEDERAL RESERVE BANK OF KANSAS CITY: FOR THE YEAR 1938

DIRECTORS:

| | | | |
|-----------------------------------|--------------------------------------|---------------------|---------------|
| CLASS A: | E. E. Mullaney | Hill City, Kans. | Dec. 31, 1938 |
| | John Evans | Denver, Colo. | Dec. 31, 1939 |
| | F. W. Sponable | Paola, Kans. | Dec. 31, 1940 |
| CLASS B: | L. E. Phillips, | Bartlesville, Okla. | Dec. 31, 1938 |
| | W. D. Hosford | Omaha, Nebr. | Dec. 31, 1939 |
| | J. M. Bernardin | Dawson, N. Mexico | Dec. 31, 1940 |
| CLASS C: | J. J. Thomas | Kansas City, Mo. | Dec. 31, 1938 |
| | E. P. Brown | Devey, Nebr. | Dec. 31, 1939 |
| | R. B. Caldwell | Kansas City, Mo. | Dec. 31, 1940 |
| MEMBER, FEDERAL ADVISORY COUNCIL: | C. Q. Chandler, Chairman | | |
| | First National Bank, Wichita, Kansas | | |

OFFICERS:

| | | | |
|----------------------------|----------------|-----------------|-------------------|
| Chmn. and Fed. Res. Agent: | J. J. Thomas | President: | G. H. Hamilton |
| Deputy Chairman: | R. B. Caldwell | 1st Vice Pres.: | C. A. Worthington |

25th Annual Report of the Board of Governors of the Federal Reserve System Covering Operations for the Year 1938. Washington, 1939.

FEDERAL RESERVE BANK OF KANSAS CITY: FOR THE YEAR 1939

DIRECTORS:

CLASS A:

| | | | |
|--------------------|-------|--------------------------------------------|----------|
| Thomas A. Dines | Pres. | U.S. National Bank, Denver, Colo. | 12/31/39 |
| Frank W. Sponable | Pres. | Miami County Nat. Bank, Paola, Kans. | 12/31/40 |
| Edward E. Mullaney | Pres. | Farmers & Merchants Bank, Hill City, Kans. | 12/31/41 |

CLASS B:

| | | | |
|---------------------|----------------|---------------------------------------------|----------|
| Willard D. Hosford | V.P.-Gen. Mgr. | John Deere Plow Co., Omaha, Nebr. | 12/31/39 |
| Joseph M. Bernardin | V.P. | Burk Lumber Company, Dawson, N.M. | 12/31/40 |
| Lee E. Phillips | | Phillips Petroleum Co., Bartlesville, Okla. | 12/31/41 |

CLASS C:

| | | | |
|--------------------|-----------------|----------------------------------------------|----------|
| Edward P. Brown | Farmer | Davey, Neb. | 12/31/39 |
| Robert B. Caldwell | | McCune, Caldwell & Downing, Kansas City, Mo. | 12/31/40 |
| John J. Thomas | Attorney-at-Law | Seward, Neb. | 12/31/41 |

MEMBER, FEDERAL ADVISORY COUNCIL: John Evans, President, First National Bank,
Denver, Colorado

OFFICERS:

| | | | |
|------------------|--------------------|------------------|------------------------|
| Chairman: | Robert B. Caldwell | President: | George H. Hamilton |
| Deputy Chairman: | John J. Thomas | 1st Vice Pres.: | Carroll A. Worthington |
| | | Vice Presidents: | James W. Helm |
| | | | Harold G. Leedy |

26th Annual Report of the Board of Governors of the Federal Reserve System Covering
Operations for the Year 1939. Washington, 1940.

FEDERAL RESERVE BANK OF KANSAS CITY: FOR THE YEAR 1940

DIRECTORS:

CLASS A:

| | | | |
|--------------------|-------|--------------------------------------------|----------|
| Myron A. Limbocker | Pres. | Citizens Nat. Bank, Emporia, Kans. | 12/31/40 |
| Edward E. Mullaney | Pres. | Farmers & Merchants Bank, Hill City, Kans. | 12/31/41 |
| Thomas A. Dines | Pres. | U.S. National Bank, Denver, Colo. | 12/31/42 |

CLASS B:

| | | | |
|---------------------|------|---------------------------------------------|----------|
| Joseph M. Bernardin | V.P. | Burk Lumber Company, Dawson, N.M. | 12/31/40 |
| Lee E. Phillips | | Phillips Petroleum Co., Bartlesville, Okla. | 12/31/41 |
| Willard D. Hosford | V.P. | John Deere Plow Co., Omaha, Neb. | 12/31/42 |

CLASS C:

| | | | |
|--------------------|--------------|----------------------------------------------|----------|
| Robert B. Caldwell | | McCune, Caldwell & Downing, Kansas City, Mo. | 12/31/40 |
| John J. Thomas | Atty.-at-Law | Seward, Neb. | 12/31/41 |
| Clarence Roberts | Editor | The Farmer-Stockman, Oklahoma City, Okla. | 12/31/42 |

MEMBER, FEDERAL ADVISORY COUNCIL: John Evans, President, First Nat. Bank, Denver, Colo.

OFFICERS:

| | | | |
|------------------|----------------|------------------|--------------------|
| Chairman: | R. B. Caldwell | President: | George H. Hamilton |
| Deputy Chairman: | J. J. Thomas | 1st Vice Pres.: | C. A. Worthington |
| | | Vice Presidents: | J. W. Helm |
| | | | Harold G. Leedy |

27th Annual Report of the Board of Governors of the Federal Reserve System Covering
Operations for the Year 1940. Washington, 1941

FEDERAL RESERVE OF KANSAS CITY: YEAR 1941

DIRECTORS:

| | | <u>TERM EXPIRES</u> |
|------------------------------------------------------------------|--------------------|---------------------------|
| CLASS A: | E. E. Mullaney | Hill City, Kans. 1941 |
| | Thomas A. Dines | Denver, Colo. 1942 |
| | M. A. Limbocker | Emporia, Kans. 1943 |
| CLASS B: | L. E. Phillips | Bartlesville, Okla. 1941 |
| | Willard D. Hosford | Omaha, Neb. 1942 |
| | J. M. Bernardin | Dawson, N. M. 1943 |
| CLASS C: | J. J. Thomas | Seward, Neb. 1941 |
| | Clarence Roberts | Oklahoma City, Okla. 1942 |
| | R. B. Caldwell | Kansas City, Mo. 1943 |
| MEMBER, FEDERAL ADVISORY COUNCIL: W. Dale Clark, Omaha, Nebraska | | |

OFFICERS:

| | | | |
|-------------------|---------------------------|------------------|----------------|
| PRESIDENT: | H. G. Leedy | CHAIRMAN: | R. B. Caldwell |
| FIRST VICE PRES.: | Henry O. Koppang | DEPUTY CHAIRMAN: | J. J. Thomas |
| VICE PRESIDENTS: | J. W. Helm (also Cashier) | | |
| | D. W. Woolley | | |

ANNUAL REPORT OF BOARD OF GOVERNORS, 1941

FEDERAL RESERVE BANK OF KANSAS CITY: FOR THE YEAR 1942

DIRECTORS:

| | | | Dec. 31, |
|-----------------------------------|---------------|-----------------------------------------------------|----------|
| CLASS A: | | | |
| Thomas A. Dines | Pres. | U.S. National Bank, Denver, Colo. | 1942 |
| M. A. Limbocker | Pres.-Chmn. | Citizens National Bank, Emporia, Kan. | 1943 |
| William L. Bunten | V.P.-Cashier | Goodland State Bank, Goodland, Kan. | 1944 |
| CLASS B: | | | |
| Willard D. Hosford | V.P.-Gen.Mgr. | John Deere Plow Co., Omaha, Neb. | 1942 |
| J. M. Bernardin | V.P. | Burk Lumber Co., Dawson, N.M. | 1943 |
| L. E. Phillips | | Phillips Petroleum Co., Bartlesville, Okla. | 1944 |
| CLASS C: | | | |
| Vacancy | | | 1942 |
| R. B. Caldwell | | McCune, Caldwell, Downing & Noble, Kansas City, Mo. | 1943 |
| R. L. Mehornay | Pres. | North-Mehornay Furniture Co., Kansas City, Mo. | 1944 |
| MEMBER, FEDERAL ADVISORY COUNCIL: | | | |
| | | W. Dale Clark, President | |
| | | The Omaha National Bank, Omaha, Neb. | |

OFFICERS:

| | | | |
|------------------|--------------------|---------------------|---------------|
| Chairman: | R. B. Caldwell | President: | H. G. Leedy |
| Deputy Chairman: | Robert L. Mehornay | 1st Vice President: | H. O. Koppang |
| | | Vice Presidents: | J. W. Helm* |
| | | | D. W. Woolley |

* Also Cashier

29th Annual Report of the Board of Governors of the Federal Reserve System Covering
Operations for the Year 1942. Washington, 1943.

FEDERAL RESERVE BANK OF KANSAS CITY: FOR THE YEAR 1943

DIRECTORS:

Dec. 31

| | | | | |
|-----------------------------------|--------------------|-------------------------------------------------------------------|------------------------------------------------------|------|
| CLASS A: | M. A. Limbocker | Pres-Chmn. | Citizens National Bank, Emporia, Kan. | 1943 |
| | W. L. Bunten | V.P.-Cashier | Goodland State Bank, Goodland, Kan. | 1944 |
| | T. A. Dines | Pres. | U.S. National Bank, Denver, Colo. | 1945 |
| CLASS B: | J. M. Bernardin | Lumberman | Kansas City, Mo. | 1943 |
| | Lee. E. Phillips | | Phillips Petroleum Co., Bartlesville, Okla. | 1944 |
| | Willard D. Hosford | V.P.-Gen.Mgr. | John Deere Plow Co., Omaha, Neb. | 1945 |
| CLASS C: | Robert B. Caldwell | | Caldwell, Downing, Noble & Garrity, Kansas City, Mo. | 1943 |
| | Robert L. Mehornay | Pres. | North-Mehornay Furniture Co., Kansas City | 1944 |
| | Lyle L. Hague | Farmer-Stockman | Cherokee, Okla. | 1945 |
| MEMBER, FEDERAL ADVISORY COUNCIL: | | W. Dale Clark, President, The Omaha National Bank, Omaha, Neb. | | |

OFFICERS:

| | | | |
|------------------|----------------|------------------|------------------|
| Chairman: | R. B. Caldwell | President: | H. G. Leedy |
| Deputy Chairman: | R. L. Mehornay | 1st Vice Pres.: | Henry O. Koppang |
| | | Vice Presidents: | Raymond W. Hall |
| | | | D. W. Woolley * |
| | | | * Also Cashier |

30th Annual Report of the Board of Governors of the Federal Reserve System Covering
Operations for the Year 1943. Washington, 1944.

FEDERAL RESERVE BANK OF KANSAS CITY: FOR THE YEAR 1944

DIRECTORS:

| | | | | |
|--------------------|-----------------|-------------------------------------------------------|------|---------|
| CLASS A: | | | | Doc. 51 |
| W. L. Bunten | V.P.-Cashier | Goodland State Bank, Goodland, Kan. | 1944 | |
| T. A. Dines | Pres. | U.S. National Bank, Denver, Colo. | 1945 | |
| M. A. Limbocker | Pres.-Chmn. | Citizens National Bank, Emporia, Kan | 1946 | |
| CLASS B: | | | | |
| L. C. Hutson | Pres.-Gen. Mgr. | Chickasha Cotton Oil Co., Chickasha, Okla. | 1944 | |
| Willard D. Hosford | V.P.-Gen. Mgr. | John Deere Plow Co., Omaha, Neb. | 1945 | |
| J. M. Bernardin | Lumberman | Kansas City, Mo. | 1946 | |
| CLASS C: | | | | |
| R. L. Mehornay | Pres. | North-Mehornay Furniture Co., Kansas City, Mo. | 1944 | |
| Lyle L. Hague | Farmer-Stockman | Cherokee, Okla. | 1945 | |
| R. B. Caldwell | | Caldwell, Downing, Noble & Garritty, Kansas City, Mo. | 1946 | |

MEMBER, FEDERAL ADVISORY COUNCIL:

A. E. Bradshaw, President
National Bank of Tulsa, Tulsa, Okla.

OFFICERS:

| | | | |
|------------------|--------------------|---------------------|------------------|
| CHAIRMAN: | Robert B. Caldwell | PRESIDENT: | H. G. Leedy |
| Deputy Chairman: | Robert L. Mehornay | 1st Vice President: | Henry O. Koppang |
| | | Vice Presidents: | L. H. Earhart |
| | | | Raymond W. Hall |
| | | | C. O. Hardy |
| | | | Joseph E. Olson |
| | | | G. H. Pipkin |
| | | | D. W. Woolley* |

31st Annual Report of Bd. of Govs. of the Fed. Res. System
Covering Operations for the Year 1944. Washington, 1945.

*Also Cashier

FEDERAL RESERVE BANK OF KANSAS CITY: FOR THE YEAR 1945

DIRECTORS:

CLASS A:

| | | | |
|-----------------|--------------|-------------------------------------|-----------------|
| T. A. Dines | Chmn.-Pres. | U.S. National Bank, Denver, Colo. | Dec. 31 1945 |
| M. A. Limbocker | Pres.-Chmn. | Citizens Natl. Bank, Emporia, Kan. | 1946 |
| W. L. Buntin | V.P.-Cashier | Goodland State Bank, Goodland, Kan. | 1947 |

CLASS B:

| | | | |
|-----------------|----------------|--------------------------------------------|------|
| W. D. Hosford | V.P.-Gen.Mgr. | John Deere Plow Co., Omaha, Neb. | 1945 |
| J. M. Bernardin | Lumberman | Kansas City, Mo. | 1946 |
| L. C. Hutson | Pres.-Gen.Mgr. | Chickasha Cotton Oil Co., Chickasha, Okla. | 1947 |

CLASS C:

| | | | |
|--------------------|-----------------|-------------------------------------------------------|------|
| Lyle L. Hague | Farmer-Stockman | Cherokee, Okla. | 1945 |
| Robert B. Caldwell | | Caldwell, Downing, Noble & Garritty, Kansas City, Mo. | 1946 |

| | | | |
|-----------------------------------|-------|--------------------------------------------------------------------|------|
| Robert L. Mehornay | Pres. | North-Mehornay Furniture Co., Kansas City, Mo. | 1947 |
| MEMBER, FEDERAL ADVISORY COUNCIL: | | A. E. Bradshaw, President, National Bank of Tulsa, Tulsa, Okla. | |

OFFICERS:

| | | | |
|-----------------|--------------------|--------------------|--------------------|
| Chairman | Robert B. Caldwell | President | H. G. Leedy |
| Deputy Chairman | Robert L. Mehornay | 1st Vice President | Henry O. Koppang |
| | | Vice Presidents: | O. P. Cordill |
| | | | L. H. Earhart |
| | | | C. O. Hardy |
| | | | John Phillips, Jr. |
| | | | G. H. Pipkin |
| | | | D. W. Woolley* |

* Also Cashier

32d Annual Report of the Bd. of Govs. of the Fed. Res. System Covering Operations for the Year 1945. Washington, 1946.

FEDERAL RESERVE BANK OF KANSAS CITY: FOR THE YEAR 1946

DIRECTORS:

CLASS A:

| | | | |
|----------------|-------------|---------------------------------------|------|
| M.A. Limbocker | Chmn.-Pres. | Citizens National Bank, Emporia, Kan. | 1946 |
| W. L. Bunten | Exec. V.P. | Goodland State Bank, Goodland, Kan. | 1947 |
| T. A. Dines | Chmn.-Pres. | U.S. National Bank, Denver, Colo. | 1948 |

CLASS B:

| | | | |
|-----------------|----------------|--------------------------------------------|------|
| J. M. Bernardin | Lumberman | Kansas City, Mo. | 1946 |
| L. C. Hutson | Pres.-Gen.Mgr. | Chickasha Cotton Oil Co., Chickasha, Okla. | 1947 |
| W. D. Hosford | V.P.-Gen. Mgr. | John Deere Plow Co., Omaha, Neb. | 1948 |

CLASS C:

| | | | |
|----------------|--|-------------------------------------------------------|------|
| R. B. Caldwell | | Caldwell, Downing, Noble & Garritty, Kansas City, Mo. | 1946 |
|----------------|--|-------------------------------------------------------|------|

| | | | |
|----------------|-----------------|------------------------------------------------|------|
| R. L. Mehornay | Pres. | North-Mehornay Furniture Co., Kansas City, Mo. | 1947 |
| Lyle L. Hague | Farmer-Stockman | Cherokee, Okla. | 1948 |

MEMBER, FEDERAL ADVISORY COUNCIL: A. E. Bradshaw, Pres., National Bank of Tulsa, Tulsa, Okla.

OFFICERS:

| | | | |
|-----------------|--------------------|-------------------------|--------------------|
| Chairman: | Robert B. Caldwell | President: | H. G. Leedy |
| Deputy Chairman | Robert L. Mehornay | 1st Vice President: | Henry O. Koppang |
| | | Vice Presidents: | O.P. Cordill |
| | | | L..H. Earhart |
| | | | Delos C. Johns |
| | | | John Phillips, Jr. |
| | | | G. H. Pipkin |
| | | Vice Pres. and Cashier: | D. H. Woolley |

33d Annual Report of the Bd. of Govs. of the Fed. Res. System Covering Operations for the Year 1946. Washington 1947.

FEDERAL RESERVE BANK OF KANSAS CITY: FOR THE YEAR 1947

DIRECTORS:

| | | | | |
|----------|----------------|-----------------|-------------------------------------------------------|------|
| CLASS A: | W.L. Bunten | Exec. V.P. | Goodland State Bank, Goodland, Kan. | 1947 |
| | T. A. Dines | Chmn.-Pres. | U.S. National Bank, Denver, Colo. | 1948 |
| | M.A. Limbocker | Chmn.-Pres. | Citizens National Bank, Emporia, Kan. | 1949 |
| CLASS B: | L. C. Hutson | Pres.-Gen.Mgr. | Chickasha Cotton Oil Co., Chickasha, Okla. | 1947 |
| | W. D. Hosford | V.P.-Gen.Mgr. | John Deere Plow Co., Omaha, Neb. | 1948 |
| | J.M. Bernardin | Lumberman | Kansas City, Mo. | 1949 |
| CLASS C: | R. L. Mehornay | Pres. | North-Mehornay Furniture Co., Kansas City | 1947 |
| | Lyle L. Hague | Farmer-Stockman | Cherokee, Okla. | 1948 |
| | R. B. Caldwell | | Caldwell, Downing, Noble & Garritty, Kansas City, Mo. | 1949 |

MEMBER, FEDERAL ADVISORY COUNCIL: James M. Kemper, President
Commerce Trust Co., Kansas City, Mo.

OFFICERS:

| | | | |
|------------------|--------------------|-------------------------|--------------------|
| Chairman: | Robert B. Caldwell | President: | H. G. Leedy |
| Deputy Chairman: | Robert L. Mehornay | 1st Vice President: | Henry O. Koppang |
| | | Vice Presidents: | L. H. Earhart |
| | | | Delos C. Johns |
| | | | R. L. Mathes |
| | | | John Phillips, Jr. |
| | | | G. H. Pipkin |
| | | Vice Pres. and Cashier: | D. W. Woolley |

34th Annual Report of the Bd. of Govs. of the Fed. Res. System Covering Operations for the Year 1947. Washington, 1948.

FEDERAL RESERVE BANK OF KANSAS CITY: FOR THE YEAR 1948

DIRECTORS

| | | | |
|----------|-----------------|------------------|----------------|
| CLASS A: | T. A. Dines | Denver, Colo. | Dec. 31, 1948 |
| | M. A. Limbocker | Emporia, Kansas | Dec. 31, 1949 |
| | W. L. Bunten | Goodland, Kansas | Dec. 31, 1950 |
| CLASS B: | W. D. Hosford | Omaha, Neb. | Dec. 31, 1948 |
| | J. M. Bernardin | Kansas City, Mo. | Dec. 31, 1949 |
| | L. C. Hutson | Chickasha, Okla. | Dec. 31, 1950 |
| CLASS C: | Lyle L. Hague | Cherokee, Okla. | Dec. 31, 1948 |
| | R. B. Caldwell | Kansas City, Mo. | Dec. 31, 1949. |
| | R. L. Mehornay | Kansas City, Mo. | Dec. 31, 1950 |

MEMBER, FEDERAL ADVISORY COUNCIL: James M. Kemper, Chairman
Commerce Trust Co., Kansas City, Mo.

OFFICERS:

| | | |
|--------------------------------|-------------------------|--------------------|
| Chairman: | President: | H. G. Leedy |
| Chairman: Robert B. Caldwell | 1st Vice President: | Henry O. Koppang |
| Dep. Chmn.: Robert L. Mehornay | Vice Presidents: | L. H. Earhart |
| | | Delos C. Johns |
| | | R. L. Mathes |
| | | John Phillips, Jr. |
| | | G. H. Pipkin |
| | Vice Pres. and Cashier: | C. E. Sandy |
| | Vice President: | D. W. Woolley |

35th Annual Report of the Bd. of Govs. of the Fed. Res. System for the Year 1948.
Washington, 1949.

FEDERAL RESERVE BANK OF KANSAS CITY: FOR THE YEAR 1949

DIRECTORS:

| | | | | |
|----------|-----------------|--------------------|---------------------------------------------|------|
| CLASS A: | M. A. Limbocker | Chmn.-Pres., | Citizens Nat. Bank, Emporia, Kan. | 1949 |
| | W. L. Bunten | Exec. V.P. | Goodland State Bank, Goodland, Kan. | 1950 |
| | T. A. Dines | Chmn. | The U.S. Nat. Bank, Denver, Colo. | 1951 |
| CLASS B: | J. M. Bernardin | Lumberman | Kansas City, Mo. | 1949 |
| | L. C. Hutson | Chmn. | Chickasha Cotton Oil Co., Chickasha, Okla. | 1950 |
| CLASS C: | W. D. Hosford | V.P.-Gen.Mgr. | John Deere Plow Co., Omaha, Nebr. | 1951 |
| | R. B. Caldwell | Caldwell, | Downing, Noble & Garritty, Kansas City, Mo. | 1949 |
| | R. L. Mehorney | Pres. | North-Mehornay Furniture Co., | 1950 |
| | Lyle L. Hague | Farmer-Stockman .. | Kansas City, Mo. / Cherokee, Okla. | 1951 |

MEMBER, FEDERAL ADVISORY COUNCIL: James M. Kemper, Chairman
Commerce Trust Co., Kansas City, Mo.

OFFICERS:

| | | | |
|-----------------|--------------------|---------------------|--------------------|
| CHAIRMAN | Robert B. Caldwell | President: | H. G. Leedy |
| DEPUTY CHAIFMAN | Robert L. Mehornay | 1st Vice President: | H. O. Koppang |
| | | Vice Presidents: | |
| | | L. H. Earhart | John Phillips, Jr. |
| | | Delos C. Johns | G. H. Pipkin |
| | | R. L. Mathes | C. E. Sandy * |
| | | D. W. Woolley | |
| | | * Also Cashier | |

36th Annual Report of the Bd. of Govs. of
the Fed. Res. System Covering Operations
for the Year 1949. Washington, 1950.

FEDERAL RESERVE BANK OF KANSAS CITY: FOR THE YEAR 1950

DIRECTORS:

CLASS A:

| | | | |
|-----------------|-------------|---------------------------------------|------|
| W. L. Bunten | Exec. V.P. | Goodland State Bank, Goodland, Kan. | 1950 |
| T. A. Dines | Chmn. | The U.S. National Bank, Denver, Colo. | 1951 |
| M. A. Limbocker | Chmn.-Pres. | Citizens National Bank, Emporia, Kan. | 1952 |

CLASS B:

| | | | |
|---------------|-------|--------------------------------------------|------|
| L. C. Hutson | Chmn. | Chickasha Cotton Oil Co., Chickasha, Okla. | 1950 |
| W. D. Hosford | V. P. | John Deere Plow Co., Omaha, Neb. | 1951 |
| E. M. Dodds | Pres. | U.S. Cold Storage Corp., Kansas City, Mo. | 1952 |

CLASS C:

| | | | |
|----------------|-----------------|-------------------------------------------------------|------|
| R. L. Mehornay | Pres. | Mehornay Furniture Co., Kansas City, Mo. | 1950 |
| Lyle L. Hague | Farmer-Stockman | Cherokee, Okla. | 1951 |
| R. B. Caldwell | | Caldwell, Downing, Noble & Garritty, Kansas City, Mo. | 1952 |

MEMBER, FEDERAL ADVISORY COUNCIL: David T. Beals, President
The Inter-State National Bank, Kansas City, Mo.

OFFICERS:

| | | | |
|------------------|--------------------|---------------------|--------------------|
| CHAIRMAN: | Robert B. Caldwell | President: | H. G. Leedy |
| Deputy Chairman: | Robert L. Mehornay | 1st Vice President: | H. O. Koppang |
| | | Vice Presidents: | |
| | | L. H. Earhart | John Phillips, Jr. |
| | | Delos C. Johns | G. H. Pipkin |
| | | R. L. Mathes | C. E. Sandy* |
| | | | D. W. Woodley |

* Also Cashier

37th Annual Report of the Bd. of Govs. of the Fed. Res. System covering operations for the Year 1950. Washington, 1951.

FEDERAL RESERVE BANK OF KANSAS CITY: FOR THE YEAR 1951

DIRECTORS:

CLASS A:

| | | | |
|---------------|-------------|------------------------------------------|-----------------|
| T. A. Dines | Chmn. | The U.S. National Bank, Denver, Colo. | Dec. 31 1951 |
| W. S. Kennedy | Pres.-Chmn. | The First Nat. Bank, Junction City, Kan. | 1952 |
| W. L. Bunten | Exec. V. P. | Goodland State Bank, Goodland, Kan | 1953 |

CLASS B:

| | | | |
|--------------|----------|-------------------------------------------|------|
| Vacancy | | | 1951 |
| E. M. Dodds | Pres. | U.S. Cold Storage Corp., Kansas City, Mo. | 1952 |
| L. C. Hutson | Director | Chicasha Cotton Oil Co., Chickasha, Okla. | 1953 |

CLASS C:

| | | | |
|----------------|-----------------|----------------------------------------------------------|------|
| Lyle L. Hague | Farmer-Stockman | Cherokee, Okla. | 1951 |
| R. B. Caldwell | | Caldwell, Downing, Noble and Garrity Kansas City, Mo. | 1952 |

| | | | |
|---------|--|--|------|
| Vacancy | | | 1953 |
|---------|--|--|------|

MEMBER, FEDERAL ADVISORY COUNCIL: David T. Beals, President
The Inter-State National Bank, Kansas City, Mo.

OFFICERS:

| | | | |
|------------------|----------------|----------------------|--------------------|
| Chairman: | R. B. Caldwell | President: | H. G. Leedy |
| Deputy Chairman: | Vacancy | 1st Vice President: | Henry O. Koppang |
| | | Vice Presidents: | L. H. Earhart |
| | | | R. L. Mathes |
| | | | John Phillips, Jr. |
| | | | G. H. Pipkin |
| | | Vice Pres.- Cashier: | C. E. Sandy |
| | | Vice President | D. W. Woolley |

38th Annual Report of the Bd. of Govs.
of the Fed. Res. System Covering
Operations for the Year 1951.
Washington, 1952.

FEDERAL RESERVE BANK OF KANSAS CITY: YEAR 1952

| <u>DIRECTORS:</u> | | <u>TERM EXPIRES</u> |
|-----------------------------------|---------------------------------------|--------------------------|
| CLASS A: | W. S. Kennedy | Junction City, Kan. 1952 |
| | W. L. Buntin | Goodland, Kan. 1953 |
| | T. A. Dines | Denver, Colo. 1954 |
| CLASS B: | E. M. Dodds | Kansas City, Mo. 1952 |
| | L. C. Hutson | Chickasha, Okla. 1953 |
| | Max A. Miller | Omaha, Neb. 1954 |
| CLASS C: | Robert B. Caldwell | Kansas City, Mo. 1952 |
| | Cecil Puckett | Denver, Colo. 1953 |
| | Lyle L. Hague | Cherokee, Okla. 1954 |
| MEMBER, FEDERAL ADVISORY COUNCIL: | David T. Beals, Kansas City, Missouri | |

OFFICERS:

| | | | |
|-------------------|----------------------------|------------------|--------------------|
| PRESIDENT: | H. G. Leedy | CHAIRMAN: | Robert B. Caldwell |
| FIRST VICE PRES.: | Henry O. Koppang | DEPUTY CHAIRMAN: | Cecil Puckett |
| VICE PRESIDENTS: | P. A. Debus (also Cashier) | | |
| | M. W. E. Park | | |
| | Clarence W. Tow | | |
| | D. W. Woolley | | |

ANNUAL REPORT OF BOARD OF GOVERNORS, 1952

FEDERAL RESERVE BANK OF KANSAS CITY: 1953

| <u>DIRECTORS:</u> | | | <u>TERM EXPIRES</u> |
|------------------------------------------------------------------------|-----------------|---------------------|---------------------|
| CLASS A: | W. L. Bunten | Goodland, Kan. | 1953 |
| | T. A. Dines | Denver, Colo. | 1954 |
| | W. S. Kennedy | Junction City, Kan. | 1955 |
| CLASS B: | Vacancy | | 1953 |
| | Max A. Miller | Omaha, Neb. | 1954 |
| | E. M. Dodds | Kansas City, Mo. | 1955 |
| CLASS C: | Cecil Puckett | Denver, Colo. | 1953 |
| | Lyle L. Hague | Cherokee, Okla. | 1954 |
| | Raymond W. Hall | Kansas City, Mo. | 1955 |
| MEMBER, FEDERAL ADVISORY COUNCIL: Charles J. Chandler, Wichita, Kansas | | | |

OFFICERS:

| | | | |
|-------------------|----------------------|------------------|-----------------|
| PRESIDENT: | H. G. Leedy | CHAIRMAN: | Raymond W. Hall |
| FIRST VICE PRES.: | Henry O. Keppang | DEPUTY CHAIRMAN: | Cecil Puckett |
| VICE PRESIDENTS: | John T. Boysen (also | | |
| | Cashier) | | |
| | M. W. E. Park | | |
| | Clarence W. Tow | | |
| | E. D. Vanderhoof | | |
| | D. W. Woolley | | |

ANNUAL REPORT OF BOARD OF GOVERNORS, 1953

FEDERAL RESERVE BANK OF KANSAS CITY: FOR THE YEAR 1954

| | | | |
|------------|-----------------|---------------------|----------------------|
| DIRECTORS: | | | term expires Dec. 31 |
| CLASS A: | Vacancy | | 1954 |
| | W. S. Kennedy | Junction City, Kan. | 1955 |
| | W. L. Bunten | Goodland, Kan. | 1956 |
| CLASS B: | Max. A. Miller | Omaha, Neb. | 1954 |
| | E. M. Dodds | Kansas City, Mo. | 1956 |
| | Vacancy | | 1956 |
| CLASS C: | Lyle L. Hague | Cherokee, Okla. | 1954 |
| | Raymond W. Hall | Kansas City, Mo. | 1955 |
| | Cecil Puckett | Denver, Colo. | 1956 |

MEMBER, FEDERAL ADVISORY COUNCIL: Charles J. Chandler

OFFICERS

CHAIRMAN: Raymond W. Hall

DEPUTY CHAIRMAN: Cecil Puckett

PRESIDENT: H. G. Leedy

First Vice President: Henry O. Koppang

Vice Presidents: John T. Boysen (Cashier)

E. D. Vanderhoof

Clarence W. Tow

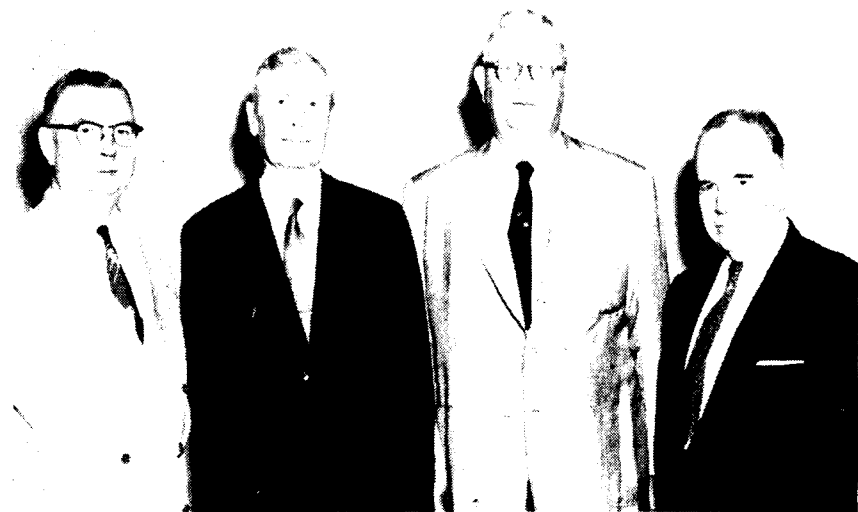
D. W. Woolley

Federal Reserve Bulletin, February 1954

FEDERAL RESERVE BANK PRESIDENTS

FEDERAL RESERVE - KANSAS CITY

Meeting, July 16, 1955 at Kansas City *Guests at July 16 Joint Meeting include Chairman Martin of Board of Governors; Comptroller of Currency Gidney; FDIC Chairman Cook; FDIC Director Harl; Fed Presidents Powell, Earhart, and Leach; present and former Advisory Council Members.*



FOUR PRESIDENTS of Federal Reserve Banks were among the distinguished company at the joint meeting. From left, they are Oliver S. Powell, Minneapolis; C. E. Earhart, San Francisco; Mr. Leach, Richmond; and Mr. Leedy, Kansas City.

Digitized for FRASER

<http://fraser.stlouisfed.org/>

Federal Reserve Bank of St. Louis

FEDERAL RESERVE BANK OF KANSAS CITY: FOR THE YEAR 1955

DIRECTORS:

| | | | |
|----------|-----------------|---------------------|----------------------|
| | | | term expires Dec. 31 |
| CLASS A: | W. S. Kennedy | Junction City, Kan. | 1955 |
| | W. L. Bunten | Goodland, Kan. | 1956 |
| | Harold Kountze | Denver, Colo | 1957 |
| CLASS B: | E. M. Dodds | Kansas City, Mo. | 1955 |
| | K. S. Adams | Bartlesville, Okla. | 1956 |
| | Max. A. Miller | Omaha, Neb. | 1957 |
| CLASS C: | Raymond W. Hall | Kansas City, Mo. | 1955 |
| | Cecil Puckett | Denver, Colo, | 1956 |
| | Joe W. Seacrest | Lincoln, Neb. | 1957 |

MEMBER, FEDERAL ADVISORY COUNCIL: Charles J. Chandler

OFFICERS

CHAIRMAN: Raymond W. Hall

DEPUTY CHAIRMAN: Cecil Puckett

PRESIDENT: H. G. Leedy First Vice President; Henry O. Koppang

| | | |
|------------------|--------------------------|------------------|
| Vice Presidents: | John T. Boysen (Cashier) | E. D. Vanderhoof |
| | Clarence W. Tow | D. W. Woolley |

Federal Reserve Bulletin, February 1955

FEDERAL RESERVE BANK OF KANSAS CITY: FOR THE YEAR 1956.

DIRECTORS:

Term Expires
Dec. 31

| | | |
|----------|-------------------|---------------------|
| CLASS A: | W. L. Bunten | Goodland, Kan. |
| | W. S. Kennedy | Junction City, Kan. |
| | Jarold Kountze | Denver, Colo. |
| CLASS B: | K. S. Adams | Bartlesville, Okla. |
| | E. M. Dodds | Kansas City, Mo. |
| | Max A. Miller | Omaha, Neb. |
| CLASS C: | Raymond W. Hall | Kansas City, Mo. |
| | Joe W. Seacrest | Lincoln, Neb. |
| | Oliver S. Wilkham | |

MEMBER, FEDERAL ADVISORY COUNCIL: R. Crosby Kemper

PRESIDENT: H. G. Leedy
FIRST VICE PRES.: Henry O. Koppang

CHAIRMAN: Raymond W. Hall
DEPUTY CHAIRMAN: Joe W. Seacrest

Vice Presidents

John T. Boysen
P. A. Debus
R. L. Mathes
Cecil Puckett
Clarence W. Tow
E. D. Vanderhoof
D. W. Woolley

ADAMS, K. S.

FEDERAL RESERVE, KANSAS CITY

Director (Class B), 1955-

ANDERSON, Arch W.

FEDERAL RESERVE, KANSAS CITY

Secretary-Cashier, 1916 -

BAILEY, Willis J. (1854-1932)

FEDERAL RESERVE, KANSAS CITY

Director, Class A, FRB Kansas City,
1914-1922.

Governor, FRB Kansas City, 1922-32.

BEALS, David Thomas (1889-)

FEDERAL RESERVE, KANSAS CITY

Member, Federal Advisory Council, 10th
(Kansas City) Reserve District, 1950-1952

BERNARDIN, Joseph M. (1868-)

FEDERAL RESERVE, KANSAS CITY

Director, Class B, FRB Kansas City, 1924-1949

BOAFDMAN, C. K.

FEDERAL RESERVE, KANSAS CITY

Assistant Federal Reserve Agent, FRB Kansas
City, 1918- .

BOYSEN, John T.

VICE PRESIDENTS & DEPUTY GOVERNORS
FEDERAL RESERVE, KANSAS CITY

EMPLOYED: 10/23/41

Non-official 10/23/41 - 11/30/43

Army service 11/30/43 - 2/1/46

Non-official 2/1/46 - 1/18/51

ASST. CASHIER: 1/18/51 - 3/13/52

ASST. VICE PRESIDENT: 3/13/52 - 1/16/53

CASHIER: 1/16/53 - 1/13/55

VICE PRESIDENT & CASHIER: 1/13/55 -

Presently serving 10/28/55

BRADSHAW, Armistead E. (1880-)

FEDERAL RESERVE, KANSAS CITY

Member, Federal Advisory Council, 10th
(Kansas City) Reserve District, 1944-1946

BFASS, E. M.

FEDERAL RESERVE, KANSAS CITY

Director, Class C, FRB Kansas City,
Term Began: 1927 Ended: 1929 .

BROWN, E. P.

FEDERAL RESERVE, KANSAS CITY

Director, Class C, FRB Kansas City, 1931-1939

BUNTEN, W. L.

FEDERAL RESERVE, KANSAS CITY

Director, Class A, FFB Kansas City, 1942-1956.

BURNHAM, Charles Edwin (1860-)

FEDERAL RESERVE, KANSAS CITY

Director, Class A, FRB Kansas City, 1914-1920

BYFNE, Thomas C.

FEDERAL RESERVE, KANSAS CITY

Director, Class B, FRB Kansas City,
1914-1929

CALDWELL, Robert Breckenridge (1882-)

FEDERAL RESERVE, KANSAS CITY

Director, Class C, FRB Kansas City, 1938-1952.

Chairman of Board and Federal Reserve Agent,
FRB Kansas City, 1939-1952

CHANDLER, Charles J.

FEDERAL RESERVE, KANSAS CITY

Member, Federal Advisory Council,
1953- 12/31/55

CHANDLER, C. C.

FEDERAL RESERVE, KANSAS CITY

Member, Federal Advisory Council,
1938

CLARK, W(ilber) Dale (1892-)

FEDERAL RESERVE, KANSAS CITY

Member, Federal Advisory Council, 10th (Kansas City) Reserve District, 1941-1943.

Member of Bd. of Directors, Omaha Branch of FRB Kansas City, April 1933.

CORDILL, O P.

VICE PRESIDENTS & DEPUTY GOVERNORS
FEDERAL RESERVE, KANSAS CITY

EMPLOYED: 2/4/19

Nonofficial 2/4/19 - 1/1/28 (OMAHA)

ASST. CASHIER (OMAHA): 1/1/28 - 7/13/42

CASHIER (OMAHA): 7/13/42 - 1/1/45

VICE PRESIDENT (OKLAHOMA CITY): 1/1/45 - 9/20/47

TERMINATED SERVICE: 9/20/47

CRAVENS, C

A

FEDERAL RESERVE, KANSAS CITY

Assistant Vice President, Jan. 1956

CROSS, J. L.

VICE PRESIDENTS & DEPUTY GOVERNORS
FEDERAL RESERVE, KANSAS CITY

EMPLOYED: 2/10/16

Nonofficial { 2/10/16 - 1/11/17

VICE GOVERNOR: 1/11/17 - 3/8/17

DEPUTY GOVERNOR: 3/8/17 - 2/12/19

TERMINATED SERVICE: 2/12/19

VICE PRESIDENTS & DEPUTY GOVERNORS
FEDERAL RESERVE, KANSAS CITY

DEBUS, P. A.

EMPLOYED: 1/2/19

Nonofficial 1/2/19 - 1/12/50

ASST. CASHIER: 1/12/50 - 3/13/52

CASHIER: 3/13/52 - 1/16/53

CASHIER (OMAHA): 1/16/53 - 1/1/54

VICE PRESIDENT (OMAHA): 1/1/54 -

Presently serving 10/28/55

DINES, Thomas A. (1880-)

FEDERAL RESEPVVE, KANSAS CITY

Director, Class A, FPB Kansas City, 1939-1954.

DODDS, Eugene Maxwell (1892-)

FEDERAL RESERVE, KANSAS CITY

Director, Class B, FRB Kansas City, 1950-

DOOLIN, John B. (1879-)

FEDERAL RESERVE, KANSAS CITY

Director, Class C, FRB Kansas City, 1933 - 1937

Deputy Chairman, 1933

Director, Oklahoma City Branch, FRB Kansas City

VICE PRESIDENTS & DEPUTY GOVERNORS
FEDERAL RESERVE, KANSAS CITY

EARHART, L. H.

EMPLOYED: 8/8/17

Nonofficial 8/8/17 - 1/1/19

ASST. CASHIER: 1/1/19 - 3/15/20

ACTING MANAGER (OMAHA): 3/15/20 - 7/1/20

MANAGER & DIRECTOR (OMAHA): 7/1/20 - 1/1/25

MANAGING DIRECTOR: (OMAHA): 1/1/25 - 1/1/44

VICE PRESIDENT (OMAHA): 1/1/44 - 12/31/53

TERMINATED SERVICE: 12/31/53

ECKLEY, Robert S.

FEDERAL RESERVE, KANSAS CITY

Formerly with FRB Kansas City in
Department of Research

EVANS, John (1884-)

FEDERAL RESERVE, KANSAS CITY

Director, Class A, FRB Kansas City, 1937-38.

Member, Federal Advisory Council, 10th (Kansas City) Reserve District. 1939 - 1940

Director, Denver Branch, FRB Kansas City,
1917-1923

FLEMING, Fred W. (1866-1929)

FEDERAL RESERVE, KANSAS CITY

Deputy Chairman and Deputy Federal Reserve
Agent, FRB Kansas City, 1916-1920.

Director, Class C, FRB Kansas City, 1916-1922.

GIBSON, Harry W.

FEDERAL RESERVE, KANSAS CITY

Director, Class B, FRB Kansas City, 1916-1926.

GOEBEL, Peter W. (1859-)

FEDERAL RESERVE, KANSAS CITY

Member, Federal Advisory Council, 10th
(Kansas City) Reserve District 1926-1929

GOODRICH, James E.

FEDERAL RESERVE, KANSAS CITY

Counsel in 1920's

VICE PRESIDENTS & DEPUTY GOVERNORS
FEDERAL RESERVE, KANSAS CITY

GREGORY, G. A.

EMPLOYED: 1/16/18

Nonofficial 1/16/18 - 1/1/20 (OMAHA)

ASST. CASHIER (OMAHA): 1/1/20 - 1/1/23

CASHIER (OMAHA): 1/1/23 - 7/13/42

ASST. VICE PRESIDENT (K.C.): 7/13/42 - 1/18/52

CASHIER: 1/18/52 - 3/13/52

VICE PRESIDENT: 3/13/52 - 6/1/52

VICE PRESIDENT (DENVER): 6/1/52 - 8/31/55

TERMINATED SERVICE: 8/31/55

HAGUE, Lyle L.

FEDERAL RESERVE, KANSAS CITY

Director, Class C, FRB Kansas City, 1943-1954.

VICE PRESIDENTS & DEPUTY GOVERNORS
FEDERAL RESERVE, KANSAS CITY

HALL, Raymond W.

EMPLOYED: 1/1/43
GENERAL COUNSEL: 1/1/43 - 2/1/45
TERMINATED SERVICE: 2/1/45

DIRECTOR (CLASS C): 1953-
CHAIRMAN & FED. RES. AGENT: 1953-

HAMILTON, George Henry (1875-1948)

FEDERAL RESERVE, KANSAS CITY

Governor, FRB Kansas City, 1932-1937.

President, FRB Kansas City, 1937-1941.

HANDFORD, Joseph S.

FEDERAL RESERVE, ~~KAN~~ANSAS CITY

Assistant Vice President, Jan. 1956

VICE PRESIDENTS & DEPUTY GOVERNORS
FEDERAL RESERVE, KANSAS CITY

HARDY, Charles O.

EMPLOYED: 12/15/43
VICE PRESIDENT: 12/15/43 - 9/28/46
TERMINATED SERVICE: 9/28/46

HELM, J. W.

VICE PRESIDENTS & DEPUTY GOVERNORS
FEDERAL RESERVE, KANSAS CITY

EMPLOYED: 11/15/17

Nonofficial 11/15/17 - 1/1/19

ASST. CASHIER: 1/1/19 - 1/1/20

CASHIER: 1/1/20 - 12/19/29

DEPUTY GOVERNOR & CASHIER: 12/19/29 - 3/1/36

VICE PRESIDENT & CASHIER: 3/1/35 - 3/8/43

TERMINATED SERVICE: 3/8/43

HORD, Heber

FEDERAL RESERVE, KANSAS CITY

Deputy Chairman, FRB Kansas City
and Class C Director, ~~1921-1926~~

1/1/22 - 12/31/27

HOSFORD, Willard Deere (1882-)

FEDERAL RESEFVE, KANSAS CITY

Director, Class B, FRB Kansas City, 1930-1951.

HUTSON, L. C.

FEDERAL RESERVE, KANSAS CITY

Director, Class B, FRB Kansas City,
1944-1953.

JOHNS, Ielos C.

VICE PRESIDENTS & DEPUTY GOVERNORS
FEDERAL RESERVE, KANSAS CITY

EMPLOYED: 7/16/45

GENERAL COUSENL & SECRETARY: 7/16/45 - 6/1/46

VICE PRESIDENT, GENERAL COUNSEL, & SECRETARY: 6/1/46 - 1/31/51

TERMINATED SERVICE: 1/31/51

JONES, Gordon

FEDERAL RESERVE, KANSAS CITY

Director, Class A, FRB Kansas City, 1914-1915

KEMPER, James M.

FEDERAL RESERVE, KANSAS CITY

Member, Federal Advisory Council,
1947 - 1949

KEMPER, R. Crosby

FEDERAL RESERVE, KANSAS CITY

Member, Federal Advisory Council,
1/1/56 -

KEMPER, W. T.

FEDERAL RESERVE, KANSAS CITY.

Member, Federal Advisory Council,
1933 - 1938

KENNEDY, W. S.

FEDERAL RESERVE, KANSAS CITY

Director, Class A, FRB Kansas City, 1951-

KOPPANG, H. O.

VICE PRESIDENTS & DEPUTY GOVERNORS
FEDERAL RESERVE, KANSAS CITY

EMPLOYED: 10/16/41
FIRST VICE PRESIDENT: 10/16/41 -
Presently serving 10/28/55

KOUNTZE, Harold (1885-)

FEDERAL RESERVE, KANSAS CITY

Director, Class A, FRB Kansas City, 1954-

Director, Denver Branch, FRB Kansas City

LANGWORTHY, Herman Moore (1880-)

FEDERAL RESERVE, KANSAS CITY

Director, Class C & Deputy Chairman, FRB Kansas
City, 1932-33

LEEDY, H. G.

VICE PRESIDENTS & DEPUTY GOVERNORS
FEDERAL RESERVE, KANSAS CITY

EMPLOYED: 5/1/24

COUNSEL: 5/1/24 - 2/1/38

VICE PRESIDENT & GENERAL COUNSEL: 2/1/38 - 3/1/41

FIRST VICE PRESIDENT & GENERAL COUNSEL: 3/1/41 - 8/28/41

PRESIDENT: 8/28/41 -

Presently serving 10/28/55

LIMBOCKER, Myron A. (-1951)

FEDERAL RESERVE, KANSAS CITY

Director, Class A, FRB Kansas City,
1940-1951.

McADAMS, A. M.

VICE PRESIDENTS & DEPUTY GOVERNORS
FEDERAL RESERVE, KANSAS CITY

EMPLOYED: 9/15/17

Nonofficial 9/15/17 - 1/31/18

Army service 1/31/18 - 1/1/20

Nonofficial 1/1/20 - 7/1/20

ASST. CASHIER: 7/1/20 - 1/1/26

ASST. FEDERAL RESERVE AGENT & SECRETARY: 1/1/26 - 9/1/36

VICE PRESIDENT & SECRETARY: 9/1/36 - 11/24/37

TERMINATED SERVICE: 11/24/37

McCLURE, Meade Lowrie (1863-1934)

FEDERAL RESERVE, KANSAS CITY

Director, Class B, FRB Kansas City, 1914-1923.

Director, Class C, Chairman & Federal Reserve

Agent, FRB Kansas City, 1923-1934

McLUCAS, Walter S.

FEDERAL RESERVE, KANSAS CITY

Member, Federal Advisory Council,
1930-1938

McNELLIS, Maurice J. (-)

FEDERAL RESERVE, KANSAS CITY

Auditor, FRB Kansas City, 1918-21.

MAGEE, Wayland Wells (1881-)

FEDERAL RESERVE, KANSAS CITY

Director, FRB Kansas City, 1930-31. CLASS C

Member Board, Omaha Branch, FRB Kansas City,
1927-30.

Member, Federal Reserve Board, 1931-1933.

MALONE, Richard Harwell, (1857-1937)

FEDERAL RESERVE, KANSAS CITY

Director, Class C, FRB Kansas City,
1914-1921.

VICE PRESIDENTS & DEPUTY GOVERNORS
FEDERAL RESERVE, KANSAS CITY

MATHES, R. L.

EMPLOYED: 12/16/18

Nonofficial (OKLA. CITY): 12/16/18 - 1/1/22

ASST. CASHIER (OKLA. CITY): 1/1/22 - 1/15/42

CASHIER: (OKLA. CITY): 1/15/42 - 11/13/47

VICE PRESIDENT (OKLA. CITY): 11/13/47 -

Presently serving 10/28/55

MEHORNAY, Robert L(ee) (1888-1951)

FEDERAL RESERVE, KANSAS CITY

Director, Class C, FRB Kansas City & Deputy
Chairman, 1942-1951.

MILLER, JR., J. Z.

FEDERAL RESERVE, KANSAS CITY

Director, Class C, FRB Kansas City, Chairman of
Board & Federal Reserve Agent, 1914-15 .
Governor, FRB Kansas City, 1916 - 1922

MILLER, Max A.

FEDERAL RESERVE, KANSAS CITY

Director, Class B, FRB Kansas City,
1952

MITCHELL, John C.

FEDERAL RESERVE, KANSAS CITY

Director, Class A, FRB Kansas City, 1916-1925

MULLANEY, Edward E.

FEDERAL RESERVE, KANSAS CITY

Director, Class A, FRB Kansas City,
1921-1941.

OBERWORTMANN, Nugent R. (1896-)

FEDERAL RESERVE, KANSAS CITY

Chief Examiner, Assistant Cashier and Asst.
Fed. Reserve Agent, FRB Kansas City, 1927-
1935.

Director, Class A, FRB Chicago, 1953- .
Chief National Bank Examiner, 7th (Chicago)
Reserve District, 1935-1949

OLSON, J. E.

VICE PRESIDENTS & DEPUTY GOVERNORS
FEDERAL RESERVE, KANSAS CITY

EMPLOYED: 5/15/18

Nonofficial (DENVER): 5/15/18 - 7/1/20

CASHIER (DENVER): 7/1/20 - 6/15/23

MANAGER & DIRECTOR (DENVER): 6/15/23 - 1/1/25

MANAGING DIRECTOR:(DENVER): 1/1/25 - 1/1/44

VICE PRESIDENT (DENVER): 1/1/44 - 11/1/44

TERMINATED SERVICE: 11/1/44

PARK, M. W. E.

VICE PRESIDENTS & DEPUTY GOVERNORS
FEDERAL RESERVE, KANSAS CITY

EMPLOYED: 4/15/16

Nonofficial 4/15/16 - 4/23/19

ASST. CASHIER: 4/23/19 - 1/6/48

ASST. VICE PRESIDENT: 1/16/48 - 3/13/52

VICE PRESIDENT: 3/13/52 - 12/31/53

TERMINATED SERVICE: 12/31/53

PARKS, Clifford C. (1860-1937)

FEDERAL RESERVE, KANSAS CITY

Director, Class A, FRB Kansas City
1926 - 1936

PETRIKIN, William L.

FEDERAL RESERVE, KANSAS CITY

Director, Class C, FRB Kansas City,
1926-1931.

Deputy Chairman, FRB Kansas City, 1927-1931.

PHILLIPS, John Jr.

VICE PRESIDENTS & DEPUTY GOVERNORS
FEDERAL RESERVE, KANSAS CITY

EMPLOYED: 5/23/17

Nonofficial 5/23/17 - 1/1/19

ASST. CASHIER: 1/1/19 - 6/1/42

ASST. VICE PRESIDENT: 6/1/42 - 6/1/45

VICE PRESIDENT: 6/1/45 - 9/1/52

TERMINATED SERVICE: 9/1/52

PHILLIPS, Lee Eldas (1876-1944)

FEDERAL RESERVE, KANSAS CITY

Director, Class^b , FRB Kansas City, 1927-1944.

PIPKIN, G. H.

VICE PRESIDENTS & DEPUTY GOVERNORS
FEDERAL RESERVE, KANSAS CITY

EMPLOYED: 6/23/18 ~~XXXXXX~~

Nonofficial 6/23/18 - 5/27/20

ASST. CASHIER: 5/27/20 - 9/1/40

MANAGING DIRECTOR (OKLA. CITY): 9/1/40 - 1/1/44

VICE PRESIDENT (OKLA. CITY): 1/1/44 - 1/1/45

VICE PRESIDENT (DENVER): 1/1/45 - 7/1/52

TERMINATED SERVICE: 7/1/52

PUCKETT, Cecil

VICE PRESIDENTS & DEPUTY GOVERNORS
FEDERAL RESERVE, KANSAS CITY

EMPLOYED: 9/1/55

VICE PRESIDENT: (DENVER): 9/1/55

Presently serving 10/28/55

PUCKETT, Cecil (1898-)

FEDERAL RESERVE, KANSAS CITY

Director, Class C, & Deputy Chairman, FRB
Kansas City, since 1952.

Director, Denver Branch, FRB Kansas City,
1950-51.

RAMSAY, Asa E.

FEDERAL RESERVE, KANSAS CITY

Director, Class C, FRB Kansas City, Chairman of
Board & Federal Reserve Agent, 1918-1923
Director, Class C, 1914 - 1923

ROBB, T(homas) Bruce (1885-)

FEDERAL RESERVE, KANSAS CITY

Director of Research, FRB Kansas City,
1937-1950.

ROBERTS, Clarence

FEDERAL RESERVE, KANSAS CITY

Director, Class C, FRB Kansas City
1940-1941

ROOF, Fred O.

FEDERAL RESERVE, KANSAS CITY

Director, Class C, FRB Kansas City,
1923-1925

SANDY, C. E.

VICE PRESIDENTS & DEPUTY GOVERNORS
FEDERAL RESERVE, KANSAS CITY

EMPLOYED: 5/3/20

Nonofficial 5/3/20 - 1/14/43

AUDITOR: 1/14/43 - 1/16/48

CASHIER: 1/16/48 - 1/18/52

VICE PRESIDENT: 1/18/52 - 2/17/52

TERMINATED SERVICE: 2/17/52

SAWYER, Charles M.

FEDERAL RESERVE, KANSAS CITY

Director, Class C, Chairman & Federal Reserve
Agent, FRB Kansas City, 1916-1917.
First Governor, 1914 - 15

SEACREST, Joe W.

FEDERAL RESERVE, KANSAS CITY

Director (Class C), 1955 -

SPONABLE, Frank Warren (-)

FEDERAL RESERVE, KANSAS CITY

Director, Class A, FRB Kansas City
1923 - 1939

SWINNEY, Edward Fletcher (1857-1946)

FEDERAL RESERVE, KANSAS CITY

Member, Federal Advisory Council, 10th (Kansas
City) Reserve District, 1914-1925

THOMAS, John Jacob (1869-)

FEDERAL RESERVE, KANSAS CITY

Director, Class C, 1936-1941, FRB Kansas City.
Chairman & Federal Reserve Agent, 1936-1938.
Deputy Chairman, FRB Kansas City, 1939-1941.

Vice Chairman (Governor), Board of Governors of
the Federal Reserve System, 1934-1936

THOMPSON, M. A.

FEDERAL RESERVE, KANSAS CITY

Assistant to the Federal Reserve Agent, FRB
Kansas City, Feb. 1, 1916.

Asst. Cashier, Oct. 12, 1917

THRALLS, Jerome

FEDERAL RESERVE, KANSAS CITY

Secretary-Cashier, FRB Kansas City, 1914-
resigned effective Feb. 10, 1916.

TOW, Clarence W.

VICE PRESIDENTS & DEPUTY GOVERNORS
FEDERAL RESERVE, KANSAS CITY

EMPLOYED: 3/23/44

Nonofficial 3/23/44 - 8/1/50

DIRECTOR RESEARCH: 8/1/50 - 1/18/52

VICE PRESIDENT: 1/18/52 -

Presently serving 10/28/55

VANDERHOOF, E. D.

VICE PRESIDENTS & DEPUTY GOVERNORS
FEDERAL RESERVE, KANSAS CITY

EMPLOYED: 10/25/17

Nonofficial 10/25/17 - 1/16/48

ASST. CASHIER: 1/16/48 - 1/18/52

ASST. VICE PRESIDENT: 1/18/52 - 1/16/53

VICE PRESIDENT: 1/16/53 -

Presently serving 10/28/55

WILLHAM, Oliver S.

FEDERAL RESERVE, KANSAS CITY

Director, Class C, 1/1/56 -

WILSON, L. A.

FEDERAL RESERVE, KANSAS CITY

Director, Class B, FRB Kansas City, 1914-15

WOOLLEY, D. W.

VICE PRESIDENTS & DEPUTY GOVERNORS
FEDERAL RESERVE, KANSAS CITY

EMPLOYED: 10/1/33

Nonofficial 10/1/33 - 5/1/37

ASST. CASHIER: 5/1/37 - 8/28/41

VICE PRESIDENT & SECRETARY: 8/28/41 - 6/1/43

VICE PRESIDENT & CASHIER: 6/1/43 - 1/16/48

VICE PRESIDENT: 1/16/48 -

Presently serving 10/28/55

WORTHINGTON, C. A.

VICE PRESIDENTS & DEPUTY GOVERNORS
FEDERAL RESERVE, KANSAS CITY

EMPLOYED: 3/1/17

Nonofficial 3/1/17 - 7/1/17

ASST. CASHIER: 7/1/17 - 3/1/19

ASST. TO GOVERNOR: 3/1/19 - 1/1/20

DEPUTY GOVERNOR: 1/1/20 - 3/1/36

FIRST VICE PRESIDENT: 3/1/36 - 4/1/41

TERMINATED SERVICE: 4/1/41

**DENVER
BRANCH**

DENVER BRANCH: FEDERAL RESERVE BANK OF KANSAS CITY : FOR THE YEAR 1917

DIRECTORS:

Alva Adams

Charles A. Burkhardt

John Evans

A. C. Foster

C. C. Parks

Manager: Charles A. Burkhardt, of Denver

Annual Report, F.R. Bank of Kansas City
1917

FEDERAL RESERVE BANK OF KANSAS CITY:

DENVER BRANCH

Opened for business Jan. 14, 1918

DIRECTORS:

| | |
|-----------------|---------------|
| Alva Adams | Pueblo, Colo. |
| C. A. Burkhardt | Denver, Colo. |
| A. C. Foster | Denver |
| John Evans | Denver |
| D. C. Parks | Denver |

| | |
|-----------------|-----------------|
| Manager | C. A. Burkhardt |
| Acting Cashier: | P. R. Fredman |

4th Annual Report (for year ended
Dec. 31, 1918), Fed. Res. Bank of
Kansas City

FEDERAL RESERVE BANK OF KANSAS CITY:

DENVER BRANCH
FOR THE YEAR 1918

DIRECTORS:

| | | |
|-----------------|---------------|---------------|
| C. C. Parks | Denver, Colo. | Dec. 31, 1919 |
| A. C. Foster | " | " |
| C. A. Burkhardt | " | " |
| John Evans | " | " |
| Alva Adams | Pueblo, Colo. | " |

OFFICERS:

Manager: C. A. Burkhardt

5th Annual Report, Board of Governors, for the Year 1918.
Washington, 1919.

FEDERAL RESERVE BANK OF KANSAS CITY:

DENVER BRANCH
FOR THE YEAR 1919

DIRECTORS:

Alva Adams
John Evans
A. C. Foster
C. C. Parks

OFFICERS

| | |
|-----------------|-----------------|
| Manager: | C. A. Burkhardt |
| Acting Cashier: | P. R. Fredman |

6th Annual Report, Federal Reserve Board, Covering the
Year 1919, 1920.

FEDERAL RESERVE BANK OF KANSAS CITY:

DENVER BRANCH
FOR THE YEAR 1920

FEDERAL RESERVE BANK OF KANSAS CITY: DENVER BRANCH
FOR THE YEAR 1921

DIRECTORS:

| | |
|-----------------|---------------|
| John Evans | Denver, Colo. |
| Alva B. Adams | Pueblo, Colo. |
| C. C. Parks | Denver, Colo. |
| A. C. Foster | Denver, Colo. |
| C. A. Burkhardt | Denver, Colo. |

Manager: C. A. Burkhardt

8th Annual Report, Federal Reserve Board, Covering Operations
for the Year 1921. Washington, 1922.

FEDERAL RESERVE BANK OF KANSAS CITY: DENVER BRANCH

directors:

FOR THE YEAR 1922

| | | |
|-----------------|---------------|---------------|
| Alva B. Adams | Pueblo, Colo. | Dec. 31, 1923 |
| C. A. Burkhardt | Denver, Colo. | Dec. 31, 1923 |
| John Evans | Denver, Colo. | Dec. 31, 1923 |
| A. C. Foster | Denver, Colo. | Dec. 31, 1923 |
| C. C. Parks | Denver, Colo. | Dec. 31, 1923 |

OFFICERS:

Manager: C. A. Burkhardt

**Ninth Annual Report, Federal Reserve Board
covering operations for the year 1922.
Washington, GPO, 1923.**

FEDERAL RESERVE BANK OF KANSAS CITY: FOR THE YEAR 1923
DENVER BRANCH

MANAGER: Joseph E. Olson

DIRECTORS:

| | | |
|-----------------|---------------|---------------|
| John Evans | Denver, Colo. | Dec. 31, 1924 |
| A C. Foster | " | " |
| C. C. Parks | " | " |
| Murdo MacKenzie | " | " |
| Joseph E. Olson | " | " |

10th Annual Report, Federal Reserve Board, Covering Operations for the Year 1923.
Washington, 1924.

FEDERAL RESERVE BANK OF KANSAS CITY: DENVER BRANCH
FOR THE YEAR 1924

DIRECTORS:

| | | |
|------------------------------------|----------------|----------|
| Joseph E. Olson, MANAGING DIRECTOR | Denver, Colo. | 12/31/25 |
| Harry Farr | Greeley, Colo. | 12/31/25 |
| Murdo MacKenzie | Denver, Colo. | 12/31/25 |
| A. C. Foster | " | 12/31/26 |
| R. H. Davis | " | 12/31/26 |
| C. C. Parks | " | 12/31/27 |
| William L. Petriken | " | 12/31/27 |

FEDERAL RESERVE BANK OF KANSAS CITY:

DENVER BRANCH
FOR THE YEAR 1925

FEDERAL RESERVE BANK OF KANSAS CITY:

DENVER BRANCH
FOR THE YEAR 1926

DIRECTORS:

Joseph E. Olson, MANAGING DIRECTOR
Merritt W. Gano
Harold Kountze
Murdo MacKenzie
Harry W. Farr
Roblin H. Davis
Henry Swan

| | |
|------------------|---------------|
| Denver, Colorado | Dec. 31, 1927 |
| " | " |
| " | " |
| " | Dec. 31, 1928 |
| Greeley, Colo. | " |
| Denver, Colo. | Dec. 31, 1929 |
| " | " |

FEDERAL RESERVE BANK OF KANSAS CITY: DENVER BRANCH
FOR THE YEAR 1927

FEDERAL RESERVE BANK OF KANSAS CITY:**DENVER BRANCH
FOR THE YEAR 1928****DIRECTORS:**

| | | |
|-----------------|----------------|---------------|
| Joseph E. Olson | Denver, Colo. | Dec. 31, 1929 |
| R. H. Davis | " | " |
| Henry Swan | " | " |
| Merritt W. Gano | " | Dec. 31, 1930 |
| Harold Kountze | " | " |
| Murdo MacKenzie | " | Dec. 31, 1931 |
| Harry W. Farr | Greeley, Colo. | " |

Managing Director: Joseph E. Olson**15th Annual Report, Federal Reserve Board, Covering
Operations for the Year 1928. Washington, 1929**

FEDERAL RESERVE BANK OF KANSAS CITY:

DENVER BRANCH
FOR THE YEAR 1929

DIRECTORS:

Joseph E. Olson, MANAGING DIRECTOR
Roblin H. Davis
Henry Swan
Merrit W. Gano
Harold Kountze
Murdo MacKenzie
Harry W. Farr

| | |
|----------------|----------|
| Denver, Colo. | 12/31/29 |
| " | 12/31/29 |
| " | 12/31/29 |
| " | 12/31/30 |
| " | 12/31/30 |
| " | 12/31/31 |
| Greeley, Colo. | 12/31/31 |

FEDERAL RESERVE BANK OF KANSAS CITY: DENVER BRANCH
FOR THE YEAR 1930

DIRECTORS:

| | | | |
|-----------------|-------------------|----------------|----------|
| Joseph E. Olson | Managing Director | Denver, Colo. | 12/31/30 |
| Merrit W. Gano | | " | 12/31/30 |
| Harold Kountze | | " | 12/31/30 |
| Murdo MacKenzie | | " | 12/31-31 |
| Harry W. Farr | | Greeley, Colo. | 12/31/31 |
| Roblin H. Davis | | Denver, Colo. | 12/31/32 |
| Henry Swan | | " | 12/31/32 |

FEDERAL RESERVE BANK OF KANSAS CITY:

DENVER BRANCH
FOR THE YEAR 1931

DIRECTORS:

Joseph E. Olson, MANAGING DIRECTOR
Murdo MacKenzie
H. W. Farr
Roblin H. Davis
Henry Swan
Merrit W. Gano
Harold Mountze

| | |
|----------------|----------|
| Denver, Colo. | 12/31/31 |
| " | 12/31/31 |
| Greeley, Colo. | 12/31/31 |
| Denver, Colo. | 12/31/32 |
| " | 12/31/32 |
| " | 12/31/32 |
| " | 12/31/33 |

FEDERAL RESERVE BANK OF KANSAS CITY: DENVER BRANCH
FOR THE YEAR 1932

DIRECTORS:

| | | |
|-----------------|----------------|---------------|
| Joseph E. Olson | Denver, Colo. | Dec. 31, 1932 |
| R. H. Davis | " | " |
| Henry Swan | " | " |
| Merrit W. Gano | " | Dec. 31, 1933 |
| Harold Kountze | " | " |
| Murdo MacKenzie | " | Dec. 31, 1934 |
| Henry W. Farr | Greeley, Colo. | " |

FEDERAL RESERVE BANK OF KANSAS CITY:

**DENVER BRANCH
FOR THE YEAR 1933**

DIRECTORS:

Joseph E. Olson, MANAGING DIRECTOR
M. W. Gano
Murdo MacKenzie
Harold Kountze
H. W. Farr
R. H. Davis
Henry Swan

| | |
|----------------|----------|
| Denver, Colo. | 12/31/33 |
| " | 12/31/33 |
| " | 12/31/34 |
| " | 12/31/33 |
| Greeley, Colo. | 12/31/34 |
| Denver, Colo. | 12/31/35 |
| " | 12/31/35 |

FEDERAL RESERVE BANK OF KANSAS CITY:

DENVER BRANCH
FOR THE YEAR 1934

DIRECTORS:

| | | |
|-----------------|----------------|---------------|
| Joseph E. Olson | Denver, Colo. | Dec. 31, 1934 |
| Murdo MacKenzie | " | Dec. 31, 1934 |
| H. W. Farr | Greeley, Colo. | Dec. 31, 1934 |
| R. H. Davis | Denver, Colo. | Dec. 31, 1935 |
| Henry Swan | Denver, Colo. | Dec. 31, 1935 |
| M. W. Gano | Denver, Colo. | Dec. 31, 1936 |
| Harold Kountze | Denver, Colo. | Dec. 31, 1936 |

MANAGING DIRECTOR: Joseph E. Olson

FEDERAL RESERVE BANK OF KANSAS CITY:

DENVER BRANCH
FOR THE YEAR 1935

DIRECTORS:

| | | |
|-----------------|----------------------------------|----------|
| Joseph E. Olson | MANAGING DIRECTOR, Denver, Colo. | 12/31/35 |
| R. H. Davis | Denver, Colo. | 12/31/35 |
| Henry Swan | Denver, Colo. | 12/31/35 |
| Murdo MacKenzie | Denver, Colo. | 12/31/35 |
| M. W. Gano | Denver, Colo. | 12/31/36 |
| Harold Kountze | Denver, Colo. | 12/31/36 |
| H. W. Farr | Greeley, Colo. | 12/31/37 |

FEDERAL RESERVE BANK OF KANSAS CITY:

**DENVER BRANCH
FOR THE YEAR 1936**

DIRECTORS:

Joseph E. Olson, MANAGING DIRECTOR

M. W. Gano

Harold Kountze

H. W. Farr

Vacancy

T. A. Dines

Vacancy

Denver, Colo.

"

"

Greeley, Colo.

Denver, Colo.

12/31/36

12/31/36

12/31/36

12/31/37

12/31/38

FEDERAL RESERVE BANK OF KANSAS CITY:

**DENVER BRANCH
FOR THE YEAR 1937**

DIRECTORS:

Joseph E. Olson, MANAGING DIRECTOR
H. W. Farr
A. K. Mitchell
T. A. Dines
J. B. Grant
Wilson McCarthy
R. H. Davis

| | |
|----------------|----------|
| Denver, Colo. | 12/31/37 |
| Greeley, Colo. | 12/31/37 |
| Albert, N.M. | 12/31/37 |
| Denver, Colo. | 12/31/38 |
| Denver, Colo. | 12/31/38 |
| Denver, Colo. | 12/31/39 |
| Denver, Colo. | 12/31/39 |

FEDERAL RESERVE BANK OF KANSAS CITY: DENVER BRANCH
FOR THE YEAR 1938

DIRECTORS:

| | | |
|-----------------|----------------------------------|----------|
| Joseph E. Olson | Managing Director, Denver, Colo. | 12/31/38 |
| T. A. Dines | Denver, Colo. | 12/31/38 |
| J. B. Grant | Denver, Colo. | 12/31/38 |
| Wilson McCarthy | Denver, Colo. | 12/31/39 |
| R. H. Davis | Denver, Colo. | 12/31/39 |
| A. K. Mitchell | Albert, N.M. | 12/31/40 |
| Wm. C. Kurtz | Grand Junction, Colo. | 12/31/40 |

**FEDERAL RESERVE BANK OF KANSAS CITY: DENVER BRANCH
FOR THE YEAR 1939**

DIRECTORS appointed by the Federal Reserve Bank:

| | | |
|-----------------|-----------------------------------------------------------------------|----------|
| Joseph E. Olson | Managing Director, Denver, Colo. | 12/31/39 |
| Roblin H. Davis | Pres., Denver National Bank, Denver | 12/31/39 |
| Wm. C. Curtz | Pres. and Gen. Mgr., Independent Lumber Co., Grand Junction, Colo. | 12/31/40 |
| Harold Kountze | Pres., Colorado National Bank, Denver | 12/31/41 |

DIRECTORS appointed by Board of Governors:

| | | |
|--------------------|-----------------------------------------------------------|----------|
| Wilson McCarthy | Pres., Denver & Salt Lake R.R. Co. Denver | 12/31/39 |
| Albert K. Mitchell | Pres. and Gen. Mgr., T.E. Mitchell & Son, Albert, N.M. | 12/31/40 |
| James B. Grant | Lewis and Grant, Denver, Colorado | 12/31/41 |

FEDERAL RESERVE BANK OF KANSAS CITY:**DENVER BRANCH
FOR THE YEAR 1940****DIRECTORS by appointment of Federal Reserve Bank**

| | | |
|------------------|-----------------------------------------------------------------------|----------|
| Joseph E. Olson | Managing Director, Denver, Colo. | 12/31/40 |
| William C. Kurtz | Pres. and Gen. Mgr., Independent Lumber Co., Grand Junction, Colo. | 12/31/40 |
| Harold Kountze | Pres., Colorado National Bank, Denver | 12/31/41 |
| Roblin H. Davis | Pres., Denver National Bank, Denver | 12/31/42 |

DIRECTORS by appointment of Board of Governors:

| | | |
|--------------------|------------------------------------------------------------------|----------|
| Albert K. Mitchell | Pres. and Gen. Mgr., T. E. Mitchell & Son., Albert New Mexico | 12/31/40 |
| James B. Grant | Lewis and Grant, Denver, Colo. | 12/31/41 |
| Wilson McCarthy | Pres., Denver & Salt Lake R.R. Co., Denver, Colo. | 12/31/42 |

FEDERAL RESERVE BANK OF KANSAS CITY:**DENVER BRANCH
FOR THE YEAR 1941****DIRECTORS appointed by Federal Reserve Bank:**

| | | |
|-----------------|--------------------------------------------------------------------------|----------|
| Joseph E. Olson | Managing Director, Denver, Colo. | 12/31/41 |
| Harold Kountze | Pres., Colorado National Bank, Denver, Colo. | 12/31/41 |
| Roblin H. Davis | Pres., Denver National Bank, Denver, Colo. | 12/31/42 |
| W. C. Kurtz | Pres. and General Mgr., Independent Lumber Co., Grand Junction, Colo. | 12/31/43 |

DIRECTORS appointed by Board of Governors:

| | | |
|-----------------|--------------------------------------------|----------|
| J. B. Grant | Lewis and Grant, Denver, Colo. | 12/31/41 |
| Wilson McCarthy | Pres., Denver & Salt Lake R.R. Co., Denver | 12/31/42 |
| Vacancy | | |

FEDERAL RESERVE BANK OF KANSAS CITY: DENVER BRANCH
FOR THE YEAR 1942

DIRECTORS appointed by Federal Reserve Bank:

| | | |
|-----------------|---------------------------------------------------------------------------|----------|
| Joseph E. Olson | Managing Director, Denver, Colo. | 12/31/42 |
| Roblin H. Davis | Pres., Denver Natl. Bank, Denver, Colo. | 12/31/42 |
| W. C. Kurtz | Pres. and Gen. Mgr., The Independent Lumber Co., Grand Junction, Colo. | 12/31/43 |
| Harold Kountze | Pres., Colorado National Bank, Denver | 12/31/44 |

DIRECTORS appointed by Board of Governors:

| | | |
|-----------------|-----------------------------------------------------|----------|
| Wilson McCarthy | Pres., Denver & Salt Lake Ry. Co., Denver, Colo. | 12/31/42 |
| M. E. Noonan | Sheep rancher, Kremmling, Colo. | 12/31/43 |
| J. B. Grant | Lewis and Grant, Denver, Colo. | 12/31/44 |

FEDERAL RESERVE BANK OF KANSAS CITY:

DENVER BRANCH
FOR THE YEAR 1943

DIRECTORS appointed by Federal Reserve Bank:

| | | |
|-------------------|---------------------------------------------------------------------------|----------|
| Joseph E. Olson | Managing Director, Denver, Colo. | 12/31/43 |
| W. C. Kurtz | Pres. and Gen. Mgr., The Independent Lumber Co., Grand Junction, Colo. | 12/31/43 |
| Harold Kountze | Pres., Colorado National Bank, Denver | 12/31/44 |
| Clarence H. Adams | Pres., International Trust Co., Denver | 12/31/45 |

DIRECTORS appointed by Board of Governors:

| | | |
|-----------------|------------------------------------------|----------|
| M. E. Noonan | Sheep rancher, Kremmling, Colo. | 12/31/43 |
| J. B. Grant | Lewis & Grant, Denver, Colo. | 12/31/44 |
| W. A. Alexander | Vice Pres., Denver Tramway Corp., Denver | 12/31/45 |

FEDERAL RESERVE BANK OF KANSAS CITY: DENVER BRANCH FOR THE YEAR 1944

DIRECTORS:

Term expires:

Appointed by Federal Reserve Bank

| | | |
|-----------------|----------------------------------------------------------------------|---------------|
| Harold Kountze | President, Colorado National Bank, Denver, Colo. | Dec. 31, 1944 |
| P. K. Alexander | Vice Pres., The First National Bank, Denver, Colo. | Dec. 31, 1945 |
| W. C. Kurtz | Pres. and General Mgr., Independent Lumber Co. Grand Junction, Colo. | Dec. 31, 1946 |
| Vacancy | | |

Appointed by Board of Governors:

| | | |
|-----------------|----------------------------------------------------------------------|---------------|
| J. B. Grant | Lewis & Grant, Denver, Colo. | Dec. 31, 1944 |
| W. A. Alexander | Vice Pres. and General Mgr., The Denver Tramway Corp., Denver, Colo. | Dec. 31, 1945 |
| M. E. Noonan | Sheep rancher, Kremmling, Colo. | Dec. 31, 1946 |

Source: 31st Annual Report, Board of Governors, covering operations for the year 1944.

FEDERAL RESERVE BANK OF KANSAS CITY: DENVER BRANCH
FOR THE YEAR 1945

DIRECTORS appointed by Federal Reserve Bank:

| | | |
|-----------------|---------------------------------------------------------------------------|----------|
| P. K. Alexander | Vice Pres., The First National Bank, Denver, Colo. | 12/31/45 |
| W. C. Kurtz | Pres. and Gen. Mgr., The Independent Lumber Co., Grand Junction, Colo. | 12/31/46 |
| Harold Kountze | Pres., Colorago National Bank, Denver, Colo. | 12/31/46 |

DIRECTORS appointed by Board of Governors:

| | | |
|-----------------|-------------------------------------------------------------------------------|----------|
| W. A. Alexander | Vice Pres. and Asst. Gen. Manager, The Denver Tramway Corp., Denver, Colo. | 12/31/45 |
| M. E. Noonan | Sheep rancher, Kremmling, Colo. | 12/31/46 |

Chief Officer:

FEDERAL RESERVE BANK OF KANSAS CITY: DENVER BRANCH
FOR THE YEAR 1946

Directors appointed by Federal Reserve Bank:

| | | |
|----------------|--------------------------------------------------------------------|----------|
| W C. Kurtz | Pres. and Gen. Mgr., Independent Lumber Co., Grand Junction, Colo. | 12/31/46 |
| Harold Kountze | Pres., Colorado National Bank, Denver | 12/31/46 |
| P.K. Alexander | Vice Pres., The First National Bank, Denver | 12/31/47 |

Directors appointed by Federal Reserve Board:

| | | |
|-----------------|-------------------------------------------------------------------------|----------|
| M. E. Noonan | Sheep rancher, Kremmling, Colo. | 12/31/46 |
| W. A. Alexander | Vice Pres. and Asst. Gen. Mgr., The Denver Tramway Corp., Denver, Colo. | 12/31/47 |

Chief Officer: G. H. Pipkin, Vice President

FEDERAL RESERVE BANK OF KANSAS CITY:

DENVER BRANCH
FOR THE YEAR 1947

DIRECTORS: Appointed by Federal Reserve Bank

| | | |
|--------------------|----------------------------------------------------------------|----------|
| P. K. Alexander | Vice Pres., The First Natl. Bank, Denver, Colo. | 12/31/47 |
| J. D. Allen | Pres., The First National Bank of Eagle County Eagle, Colo. | 12/31/48 |
| Albert K. Mitchell | Rancher, Albert, New Mexico | 12/31/48 |

DIRECTORS: Appointed by the Board of Governors:

| | | |
|-----------------|----------------------------------------------------------------------------|----------|
| W. A. Alexander | Vice Pres. and Asst. Gen. Mgr., The Denver Tramway Corp., Denver, Colo. | 12/31/47 |
| M. E. Noonan | Sheep rancher, Kremmling, Colo. | 12/31/48 |
| Chief Officer: | G. H. Pipkin | |

FEDERAL RESERVE BANK OF KANSAS CITY: DENVER BRANCH
FOR THE YEAR 1948

DIRECTORS appointed by Federal Reserve Bank:

| | | |
|--------------------|------------------------------------------------------------|----------|
| J. D. Allen | Pres., The First Natl. Bank of Eagle County Eage, Colo. | 12/31/48 |
| Albert K. Mitchell | Rancher, Albert, New Mexico | 12/31/48 |
| P. K. Alexander | Vice Pres., The First National Bank, Denver | 12/31/49 |

DIRECTORS appointed by Board of Governors:

| | | |
|-----------------|----------------------------------------------------------------------------|----------|
| M. E. Noonon | Sheep rancher, Kremmling, Colo | 12/31/48 |
| W. A. Alexander | Vice Pres. and Asst. Gen. Mgr., The Denver Tramway Corp., Denver, Colo. | 12/31/49 |

Chief Officer: G. H. Pipkin

FEDERAL RESERVE BANK OF KANSAS CITY: DENVER BRANCH
FOR YEAR 1949

DIRECTORS appointed by Federal Reserve Bank:

| | | |
|--------------------|-----------------------------------------------------------------|----------|
| P. K. Alexander | Vice Pres., The First Natl. Bank, Denver, Colo. | 12/31/49 |
| J. D. Allen | Pres., The First National Bank of Eagle County, Eagle, Colo. | 12/31/50 |
| Albert K. Mitchell | Rancher, Albert, New Mexico | 12/31/50 |

DIRECTORS appointed by Federal Reserve Board:

| | | |
|------------------|-----------------------------------------|----------|
| W. A. Alexander | Pres., The Denver Tramway Corp., Denver | 12/31/49 |
| G. Norman Winder | Rancher, Craig, Colo. | 12/31/50 |

Chief Officer: G. H. Pipkin

FEDERAL RESERVE BANK OF KANSAS CITY:

**DENVER BRANCH
FOR THE YEAR 1950**

DIRECTORS appointed by Federal Reserve Bank:

| | | |
|--------------------|------------------------------------------------------------------|----------|
| J. D. Allen | Pres., The First National Bank of Eagle Country, Eagle, Colo. | 12/31/50 |
| Albert K. Mitchell | Rancher, Albert, New Mexico | 12/31/50 |
| P. K. Alexander | Vice Pres., The First Natl. Bank, Denver, Colo. | 12/31/51 |

DIRECTORS appointed by Board of Governors:

| | | |
|------------------|--------------------------------------------------------------------------------------|----------|
| G. Norman Winder | Rancher, Craig, Colo. | 12/31/50 |
| Cecil Puckett | Dean, The College of Business Administration, University of Denver, Denver, Colo. | 12/31/51 |

Chief Officer: G. H. Pipkin

FEDERAL RESERVE BANK OF KANSAS CITY: DENVER BRANCH
FOR THE YEAR 1951

DIRECTORS: Appointed by Federal Reserve Bank:

| | | |
|--------------------|--------------------------------------------------------------|----------|
| P. K. Alexander | Vice Pres., The First National Bank, Denver, Colo. | 12/31/51 |
| Ramon B. Handy | Exec. Vice Pres., The First National Bank, Greeley, Colo. | 12/31/52 |
| Albert K. Mitchell | Rancher, Albert, New Mexico | 12/31/52 |

DIRECTORS: Appointed by Board of Governors:

| | | |
|------------------|---------------------------------------------------------------------------------|----------|
| Cecil Puckett | Dean, College of Business Administration University of Denver, Denver, Colo. | 12/31/51 |
| G. Norman Winder | Rancher, Craig, Colo. | 12/31/52 |

Chief Officer: G. H. Pipkin

FEDERAL RESERVE BANK OF KANSAS CITY:

DENVER BRANCH
FOR THE YEAR 1952

DIRECTORS appointed by Federal Reserve Bank:

| | | |
|--------------------|----------------------------------------------------------|----------|
| Ralph S. Newcomer | Exec. Vice Pres., First National Bank, Boulder, Colo. | 12/31/52 |
| Albert K. Mitchell | Rancher, Albert, New Mexico | 12/31/52 |
| Merriam B. Berger | Vice Pres., The Colorado National Bank, Denver, Colo. | 12/31/53 |

DIRECTORS appointed by Board of Governors:

| | | |
|------------------|----------------------------------------------|----------|
| G. Norman Winder | Rancher, Craig, Colo. | 12/31/52 |
| Aksel Nielsen | Pres., The Title Guaranty Co., Denver, Colo. | 12/31/53 |

Chief Officer: G. A. Gregory

FEDERAL RESERVE BANK OF KANSAS CITY:

DENVER BRANCH
FOR THE YEAR 1953

DIRECTORS appointed by Federal Reserve Bank:

| | | |
|-------------------|--------------------------------------------------------------|----------|
| Merriam B. Berger | Vice Pres., The Colorado National Bank, Denver, Colo. | 12/31/53 |
| Ralph S. Newcomer | Executive Vice Pres., First National Bank, Boulder, Colo. | 12/31/54 |
| Arthur Johnson | Pres., First National Bank, Raton, N.M. | 12/31/54 |

DIRECTORS appointed by Board of Governors:

| | | |
|------------------|----------------------------------------------|----------|
| Aksel Nielsen | Pres., The Title Guaranty Co., Denver, Colo. | 12/31/53 |
| G. Norman Winder | Rancher, Craig, Colo. | 12/31/54 |

Chief Officer: G. A. Gregory

FEDERAL RESERVE BANK OF KANSAS CITY:

DENVER BRANCH
FOR THE YEAR 1954

DIRECTORS appointed by Federal Reserve Bank:

| | | |
|-------------------|--------------------------------------------------------------|----------|
| Ralph S. Newcomer | Executive Vice Pres., First National Bank, Boulder, Colo. | 12/31/54 |
| Arthur Johnson | Pres., First National Bank, Raton, New Mexico | 12/31/54 |
| Merriam B. Berger | Vice Pres., The Colorado National Bank, Denver, Colo. | 12/31/55 |

DIRECTORS appointed by Board of Governors:

| | | |
|-----------------------------------|--------------------------------|----------|
| G. Norman Winder, <u>CHAIRMAN</u> | Rancher, Craig, Colo. | 12/31/54 |
| Aksel Nielsen | Pres., The Title Guaranty Co., | 12/31/55 |

| | |
|-----------------|-------------------------------|
| Chief Officer: | G. A. Gregory, Vice President |
| Cashier: | H. L. Stempel |
| Asst. Cashiers: | Hubert G. Duck |
| | H. W. Fritz |

DAVIS, Roblin Henry (1885-1945)

DENVER BRANCH, FRB Kansas City

Director, Denver Branch, FRB Kansas City,
1924-1935, 1937-1942

EVANS, John (1884-)

DENVER BRANCH, FRB Kansas City

Director, Denver Branch, FRB Kansas City,
1917-1923.

Director, Class A, FRB Kansas City, 1937-38.

Member, Federal Advisory Council, 10th (Kansas
City) Reserve District

KOUNTZE, Harold (1885-)

DENVER BRANCH, FRB Kansas City

Director, Denver Branch, FRB Kansas City

Director, Class A, FRB of Kansas City, 1954

McCARTHY, Wilson (1884-)

DENVER BRANCH, FRB Kansas City

Director, Denver Branch, FRB Kansas City,
1937-1942.

MacKENZIE, Murdo (1850-1939)

DENVER BRANCH, FRB Kansas City

Director, Denver Branch, FRB Kansas City,
1923-1935.

PUCKETT, Cecil (1898-)

DENVER BRANCH, FRB Kansas City

Director, Denver Branch, FRB Kansas City,
1950-51.

Director, Class C, & Deputy Chairman, FRB
Kansas City, since 1952.

FEDERAL RESERVE BANK OF KANSAS CITY:

OMAHA BRANCH

O. T. Eastman, Manager
E. D. McAllister, Cashier

Directors:

Luther Drake
P. L. Hall
J. C. McNish
R. C. Marnell

4th Annual Report (for year ending Dec. 31, 1918)
of Federal Reserve Bank of Kansas City

OMAHA BRANCH: FEDERAL RESERVE BANK OF KANSAS CITY
Opened September 4, 1917

DIRECTORS: OMAHA BRANCH

Luther Drake
P. L. Hall
J. C. McNish
R. O. Marnell
O. T. Eastman

Omaha
Lincoln
Omaha
Nebraska City
Omaha

Manager of Branch
Cashier

G. T. Eastman
E. D. McAllister

BATTEY, C. Wheaton

OMAHA BRANCH, FRB Kansas City

Director, Omaha Branch, 1956-7

CLARK, W(ilber) Dale (1892-)

OMAHA BRANCH, FRB Kansas City

Member of Board of Directors, Omaha Branch,
FRB Kansas City, April 1933.

Member, Federal Advisory Council, 10th (Kansas
City) Reserve District, 1941-1943.

DAVIS, Thomas Latham (1882-)

OMAHA BRANCH, FRB Kansas City

Director, Omaha Branch, FRB Kansas City

MAGEE, Wayland Wells (1881-)

OMAHA BRANCH, FRB Kansas City

Member Board, Omaha Branch, FRB Kansas City,
1927-30.

Director, FRB Kansas City, 1930-31.

Member, Federal Reserve Board, 1931-33.

PAXTON, Jr., James L.

OMAHA BRANCH, FRB Kansas City

Director, Omaha Branch, 1956-7