

HG+
2562
D7U5S31

U.S. Federal Reserve Bank Organization
Committee.
Exhibits and letters submitted at
hearings... (Salt Lake City)

73

colorado

AUG 25 1926

HG+
2562
.D745S31

13262

NIGHT LETTER

THE WESTERN UNION TELEGRAPH COMPANY

25,000 OFFICES IN AMERICA INCORPORATED CABLE SERVICE TO ALL THE WORLD

This Company TRANSMITS and DELIVERS messages only on conditions limiting its liability, which have been assented to by the sender of the following Night Letter. Errors can be guarded against only by repeating a message back to the sending station for comparison, and the Company will not hold itself liable for errors or delays in transmission or delivery of Unrepeated Night Letters, sent at reduced rates, beyond a sum equal to the amount paid for transmission; nor in any case beyond the sum of Fifty Dollars, at which, unless otherwise stated below, this message has been valued by the sender thereof, nor in any case where the claim is not presented in writing within sixty days after the message is filed with the Company for transmission.

This is an UNREPEATED NIGHT LETTER, and is delivered by request of the sender, under the conditions named above.

THEO. N. VAIL, PRESIDENT

BELVIDERE BROOKS, GENERAL MANAGER

RECEIVED AT

B6A TR 50 NL 3 EXTRA

1587

GRAND JUNCTION COLO DEC 27 1913

WILLIAM G MCADOO

SECY OF TREASURY WASHN DC

IN THAT REGION LYING BETWEEN THE ROCKY MOUNTAINS ON THE EAST AND SIERRAS ON THE WEST SALT LAKE CITY UTAH IS THE GREAT COMMERCIAL AND FINANCIAL CENTER WE STRONGLY URGE THE ESTABLISHMENT OF ONE OF YOUR REGIONAL BANKS AT THAT POINT AS PROVIDED FOR IN YOUR NEW CURRENCY BILL

GRAND JUNCTION CHAMBER OF COMMERCE

ANSWERED AT LES SECY

424AM

JAN 6 1914
FORM

idaho

Commercial Club

POCATELLO, IDAHO
GEO. STOLL
MANAGER AND SECRETARY

December, 29, 1913.

Sec'y. Mc Cadoo,

Washington, D.C.

Dear Sir,-

Pocatello, and Bannock Co. Citizens especially the bankers, are very much interested in having one of the banks, created by the new currency system, established in Salt Lake City, that being the most centrally located, in this intermountain region.

Your office no doubt, is given very carefull attention to the location of this banks, and we trust that the little influence, we desire to convey on this situation, will have some weight.

Thanking you for the consideration, we know you will give, and wishing you the compliments of the season, we are,

Respectfully Yours,

Commercial Club,
Pocatello, Idaho.

Commercial Club,
Pocatello, Idaho.

Geo. Stoll
ANSWERED
JUL 15 1914
CRM

AS

Handwritten initials

NIGHT LETTER

THE WESTERN UNION TELEGRAPH COMPANY

INCORPORATED

25,000 OFFICES IN AMERICA

CABLE SERVICE TO ALL THE WORLD

This Company **TRANSMITS** and **DELIVERS** messages only on conditions limiting its liability, which have been assented to by the sender of the following **Night Letter**. Errors can be guarded against only by repeating a message back to the sending station for comparison, and the Company will not hold itself liable for errors or delays in transmission or delivery of **Unrepeated Night Letters**, sent at reduced rates, beyond a sum equal to the amount paid for transmission; nor in any case beyond the sum of **Fifty Dollars**, at which, unless otherwise stated below, this message has been valued by the sender thereof, nor in any case where the claim is not presented in writing within sixty days after the message is filed with the Company for transmission.

This is an **UNREPEATED NIGHT LETTER**, and is delivered by request of the sender, under the conditions named above.

THEO N. VAIL, PRESIDENT

BELVIDERE BROOKS, GENERAL MANAGER

RECEIVED AT
F181CH RA 23 NL

Handwritten: 12-3-13

1446

TWIN FALLS IDAHO DEC 27 1913

SECRETARY MCADOO

U S TREASURY WASHINGTON DC

BELIEVING THAT RICH MINERAL AND AGRICULTURAL INTERMOUNTAIN COUNTRY IS ENTITLED TO CONSIDERATION WE MOST HEARTILY ENDORSE SALT LAKE FOR ONE OF THE RESERVE BANKS

TWIN FALLS COMMERCIAL CLUB

ANSWERED
JAN 6 1914
FORM

1231A28

utah

NIGHT LETTER

THE WESTERN UNION TELEGRAPH COMPANY

INCORPORATED
25,000 OFFICES IN AMERICA CABLE SERVICE TO ALL THE WORLD

This Company TRANSMITS and DELIVERS messages only on conditions limiting its liability, which have been assented to by the sender of the following Night Letter. Errors can be guarded against only by repeating a message back to the sending station for comparison, and the Company will not hold itself liable for errors or delays in transmission or delivery of Unrepeated Night Letters, sent at reduced rates, beyond a sum equal to the amount paid for transmission; nor in any case beyond the sum of Fifty Dollars, at which, unless otherwise stated below, this message has been valued by the sender thereof, nor in any case where the claim is not presented in writing within sixty days after the message is filed with the Company for transmission.

This is an UNREPEATED NIGHT LETTER, and is delivered by request of the sender, under the conditions named above.

THEO. N. VAIL, PRESIDENT

BELVIDERE DROOKS, GENERAL MANAGER

RECEIVED AT

1399

C66CHXL

66 NL

LOGAN UTAH JAN 2ND 1914

HON MCADOO

SECRETARY OF THE TREASURY

WASHINGTON DC

DEAR SIR IN AS MUCH AS SALT LAKE CITY IS THE CENTER OF A REGION THAT EXTENDS OVER A RADIUS OF 500 MILES IN ALL DIRECTIONS AND CONTAINS PERHAPS THE GREATEST MINING DEVELOPMENT OF ANY TERRITORY IN THE WORLD AND WITH GREAT AGRICULTURAL DEVELOPMENTS AND POSSIBILITIES WE THINK IT ADVISABLE TO LOCATE AT THIS CITY ONE OF THE REGIONAL BANK CREATED BY THE NEW CURRENCY SYSTEM

COMMITTEE BOOSTERS CLUB

Form AS

1110PM

WESTERN UNION DAY LETTER



THEO. N. VAIL, PRESIDENT

Salt Lake City

113

RECEIVED AT

V. 242 CH. 25 BLUE

613

1913 DEC 31 PM 2 45

LOGAN, UTAH 81

SECY OF THE TREASURY

WASHINGTON DC

WE ARE HEARTILY IN FAVOR OF THE SELECTING OF SALT LAKE CITY

AS A PROPER LOCALITY FOR A FEDERAL RESERVE BANK FOR

THIS SECTION OF THE COUNTRY

FARMERS AND MERCHANTS SAVINGS BANK

ANSWERED
DEC 2 1914
FORM 25

25

NIGHT LETTER

THE WESTERN UNION TELEGRAPH COMPANY

INCORPORATED

25,000 OFFICES IN AMERICA CABLE SERVICE TO ALL THE WORLD

This Company TRANSMITS and DELIVERS messages only on conditions limiting its liability, which have been assented to by the sender of the following Night Letter. Errors can be guarded against only by repeating a message back to the sending station for comparison, and the Company will not hold itself liable for errors or delays in transmission or delivery of Unrepeated Night Letters, sent at reduced rates, beyond a sum equal to the amount paid for transmission; nor in any case beyond the sum of Fifty Dollars, at which, unless otherwise stated below, this message has been valued by the sender thereof, nor in any case where the claim is not presented in writing within sixty days after the message is filed with the Company for transmission.

This is an UNREPEATED NIGHT LETTER, and is delivered by request of the sender, under the conditions named above.

THEO. N. VAIL, PRESIDENT

BELVIDERE BROOKS, GENERAL MANAGER

RECEIVED AT

1057

1202 A

B26CH JG 55--N L

LOGAN UTAH JAN 3-14

THE HON SECY OF THE TREASURY

WASHN DC

WE URGE THE CONSIDERATION OF SALT LAKE CITY'S APPLICATION FOR ONE OF THE REGIONAL BANKS BESIDES BEING IDEALLY LOCATED FROM A GEOGRAPHICAL STANDPOINT IT IS THE CENTER OF AN EXTENSIVE MINING AND AGRICULTURAL REGION THE BANKING INTERESTS IN A RADIUS OF FIVE HUNDRED MILES WE FEEL SURE WILL UNITEDLY REQUEST THE SELECTION OF THE GREAT INLAND CITY

ANSWERED
JAN 6 1914
FORM

THATCHER BROS BANKING CO

Form 4

1158P

NIGHT LETTER

THE WESTERN UNION TELEGRAPH COMPANY

INCORPORATED

25,000 OFFICES IN AMERICA CABLE SERVICE TO ALL THE WORLD

This Company TRANSMITS and DELIVERS messages only on conditions limiting its liability, which have been assented to by the sender of the following Night Letter. Errors can be guarded against only by repeating a message back to the sending station for comparison, and the Company will not hold itself liable for errors or delays in transmission or delivery of Unrepeated Night Letters, sent at reduced rates, beyond a sum equal to the amount paid for transmission; nor in any case beyond the sum of Fifty Dollars, at which, unless otherwise stated below, this message has been valued by the sender thereof, nor in any case where the claim is not presented in writing within sixty days after the message is filed with the Company for transmission.

This is an UNREPEATED NIGHT LETTER, and is delivered by request of the sender, under the conditions named above.

THEO. N. VAIL, PRESIDENT

BELVIDERE BROOKS, GENERAL MANAGER

RECEIVED AT

F231CH LY 63 NL 4 EXA

1487

1914 JAN 7 AM 5 55

SALT LAKE UTAH JAN 6 1914

SEC W G MCADOO

COMMITTEE

FEDERAL RESERVE ORGANIZATION WASHN DC

Down

BANKERS AND BUSINESS MEN OF SALT LAKE CITY AND THIS REGION JOIN
IN AN INVITATION TO YOUR COMMITTEE TO VISIT SALT LAKE CITY ON
YOUR WESTERN TRIP TO GO OVER WITH THEM INFORMATION PREPARED
TO SHOW WHY ONE OF THE REGIONAL BANKS PROVIDED BY
THE NEW CURRENCY LEGISLATION SHOULD BE LOCATED HERE ADVISE AS
TO PROBABLE DATE OF YOUR ARRIVAL WILL BE APPRECIATED
WILL G FARFELL

MANAGING DIRECTOR COMMERCIAL CLUB

507AM

NIGHT LETTER

THE WESTERN UNION TELEGRAPH COMPANY

INCORPORATED
25,000 OFFICES IN AMERICA CABLE SERVICE TO ALL THE WORLD

This Company TRANSMITS and DELIVERS messages only on conditions limiting its liability, which have been assented to by the sender of the following Night Letter. Errors can be guarded against only by repeating a message back to the sending station for comparison, and the Company will not hold itself liable for errors or delays in transmission or delivery of Unrepeated Night Letters, sent at reduced rates, beyond a sum equal to the amount paid for transmission; nor in any case beyond the sum of Fifty Dollars, as which, unless otherwise stated below, this message has been valued by the sender thereof, nor in any case where the claim is not presented in writing within sixty days after the message is filed with the Company for transmission.

This is an UNREPEATED NIGHT LETTER, and is delivered by request of the sender, under the conditions named above.

THEO. N. VAIL, PRESIDENT

BELVIDERE BROOKS, GENERAL MANAGER

RECEIVED AT

F2300H LY 63 NL 4 EXA

1487

1914 JAN 7 AM 5 55

SALT LAKE UTAH JAN 6 1914

SECY DAVID F HOUSTON

FEDERAL RESERVE ORGANIZATION COMMITTEE WASH DC

BANKERS AND BUSINESS MEN OF SALT LAKE CITY AND THIS REGION JOIN
IN AN INVITATION TO YOUR COMMITTEE TO VISIT SALT LAKE CITY ON
YOUR WESTERN TRIP TO GO OVER WITH THEM INFORMATION PREPARED
TO SHOW WHY ONE OF THE REGIONAL BANKS PROVIDED BY
THE NEW CURRENCY LEGISLATION SHOULD BE LOCATED HERE ADVISE AS
TO PROBABLE DATE OF YOUR ARRIVAL WILL BE APPRECIATED

WILL G FARRELL

MANAGING DIRECTOR COMMERCIAL CLUB

505AM

TREASURY DEPARTMENT TELEGRAM.



WHERE WRITTEN:

Washington,

RESERVE BANK ORGANIZATION COMMITTEE.

To

January 15, 1914.

Will G. Farrell,
Managing Director, Commercial Club,
Salt Lake City, Utah.

Committee will hear representatives from Salt Lake, at hearing in Denver, Federal Court Room eighteen, Monday, January twenty-sixth. Hearings begin at nine o'clock. Will be obliged if you will wire me names of those desiring to appear, and ask Clearing House Association to do likewise. Committee directs me to advise impossible to change itinerary.

Secretary
Reserve Bank Organization Committee.

OFFICIAL BUSINESS.
GOVERNMENT RATES.

OFFICIAL.

CHARGE TREASURY DEPARTMENT, APPROPRIATION FOR

The appropriation from which payable must be stated on above line.

DEPARTMENTAL STOCK FORM 212B.

NIGHT LETTER

THE WESTERN UNION TELEGRAPH COMPANY

25,000 OFFICES IN AMERICA

INCORPORATED

CABLE SERVICE TO ALL THE WORLD

This Company TRANSMITS and DELIVERS messages only on conditions limiting its liability, which have been assented to by the sender of the following Night Letter. Errors can be guarded against only by repeating a message back to the sending station for comparison, and the Company will not hold itself liable for errors or delays in transmission or delivery of Unrepeated Night Letters, sent at reduced rates, beyond a sum equal to the amount paid for transmission; nor in any case beyond the sum of Fifty Dollars, at which, unless otherwise stated below, this message has been valued by the sender thereof, nor in any case where the claim is not presented in writing within sixty days after the message is filed with the Company for transmission.

This is an UNREPEATED NIGHT LETTER, and is delivered by request of the sender, under the conditions named above.

THEO. N VAIL, PRESIDENT

BELVIDERE DROOKS, GENERAL MANAGER

RECEIVED AT

F103CH TN 37 NL 3 EXTRA

1213

SALT LAKE UTAH JAN 23 1914

M C ELLIOTT

SECRETARY RESERVE BANK ORGANIZATION COMMITTEE

WASHINGTON DC

MR W W ARMSTRONG AND MR T W BOYER WILL

GO TO DENVER AS REPRESENTATIVES FROM SALT LAKE TO BE PRESENT
AT THE HEARING BEFORE THE RESERVE BANK ORGANIZATION COMMITTEE ON
MONDAY JANUARY TWENTY SIXTH

WILL G FARRELL

SECRETARY COMMERCIAL CLUB

1012PM

WALTER G. TUTTLE, PRESIDENT
M. S. WOOLEY, VICE PRESIDENT

SERENO B. TUTTLE, SECRETARY
FREEMAN MORNINGSTAR, TREASURER

Tuttle Brothers Company

INC.

Investment Bankers

ESTABLISHED 1871

Real Estate & Investments
Mortgage Loans, Bonds and Stocks

TELEPHONES (INDEPENDENT 72
ROCKY MT. 72

159 Main Street,
Salt Lake City, Utah

January 3rd, 1914.

Honorable William McAdoo,
Secretary of the Treasury,
Washington, D.C.

Dear Sir:-

Salt Lake City, Utah, has presented its claims for the location of a Regional Bank in Salt Lake City as a center of a very large surrounding and tributary territory. The matter has been called to your attention by Secretary Will G. Farrell of the Salt Lake City Commercial Club. The trend of business, on account of the railroad connections, is toward Salt Lake City from all of Utah covered by the Denver & Rio Grand Railway, Union Pacific Railway, Southern Pacific Railway, Oregon Short Line Railway, Western Pacific Railway and Los Angeles and Salt Lake Railway, as main lines and with many branches to our smelters and mines at Garfield, Tooele, Bingham, Park City, Tintic and other mining centers, and also to several sugar refining plants located in Utah and Idaho. Also southern and eastern Idaho are directly tributary over the Oregon Short Line Railway to Salt Lake City; also Western Montana with its large mining interests covered by the O.S.L. Railway; also southern and southwestern Wyoming with its immense coal fields covered by the Union Pacific Railway; also Western Colorado covered by the D. & R.G. Railway; also eastern Nevada covered by the Western Pacific and Southern Pacific Railways

Regional Banks

(2).

and also southern Nevada covered by the Los Angeles and Salt Lake Railway with connections to the large mines of Tonopah and Goldfield. In addition to the net work of steam railroads centering in Salt Lake City, electric inter-urban lines radiate in all directions from Salt Lake reaching the principal business cities of the State. Surely an immense territory which cannot be accommodated as well by a Regional Bank if located in any other place.

The dependence of this vast territory upon Salt Lake City is well illustrated by the telephone system, which we understand, serves this immense territory directly from Salt Lake, covering as it does all of Idaho, Eastern Oregon, Montana and Utah and more than half of Wyoming, from the Salt Lake office direct. Whereas if Denver desires to reach the territory mentioned, by telephone, it has to do so through the Salt Lake City Office, which is not as satisfactory as direct communication, as the message has to be relayed or repeated by the operator.

This direct telephone connection will be of great advantage in operating a Regional Bank-- offering a means of quick decision as to whether the Regional Bank will be able to take the securities a local bank has to offer and describe over the telephone. The chairman of the loaning committee would be able to investigate more thoroughly over a direct telephone than in case the message had to be repeated by an operator with the possibility of mistake in the repeating, to say nothing of the delay and extra time consumed in so doing-- and this quick decision might easily be the means of saving many a bank from failure. The direct line also gives more privacy, which is desired by both the local bank and its depositors.

Regional Banks.

(3).

This city also has better telegraph connections than any other intermountain city-- this being departmental headquarters of both the Western Union and Postal Telegraph lines. Quick, easy, and direct communication by telephone, telegraph and railroad would seem to be required by a Regional Bank, and these we have in greater degree than other cities in this region.

Assuming that our geographical location and the territory served indicates a great probability that you will decide to locate a Regional Bank in Salt Lake, we are writing you to present an up-to-date, fire-proof banking building in Salt Lake City for your use in case you locate the Regional Bank here. We represent this building as agents for the owners and can sell it to the Government for \$100,000.00. It is not occupied at present and immediate possession can be given. We are enclosing a picture of the building and will add that it is located on State Street, one block from the business center of the city, on the same street and within three blocks of the two and a half million dollar State Capitol, which is now being erected, the walls being up and the roof now going on. It is a three story and basement, fire-proof and re-inforced concrete building with stone front and copper trimmings 50 feet front by 95 feet deep and a one story addition in rear about 32 X 34 feet in size with a right of way and light on all four sides-- something unusual in the business district in a city of 100,000 population. The ground is 50 X 129½ feet in size.

We are enclosing a map of Salt Lake City with numbers showing the location of the 14 banks in the city and with a cross (X) showing the building presented for your consideration, from which you will see how convenient the location would be to all of the banks in Salt Lake City.

Regional Banks

(4).

The reference numbers on the side of the map correspond to numbers showing the location of all the banks here, giving their names.

The building was used by the Independent Telephone Company before it was taken over by the Mountain States Telephone & Telegraph Company and they have a very large, fine home across the street and a half a block from this building and so do not need this, and are offering it at a sacrifice price.

It occurs to us that in the establishment of the various banks through the west, your committee will need some central point from which to distribute the supplies necessary for the use of the various banks of this section, and this would give you the room needed for the Regional Bank itself as well as a central distributing point-- the fireproof construction would give absolute safety to the stores, and it is quite possible there would be room for other Government offices in the building also--It is the only available building of its class and construction in Salt Lake City and nothing better built in Salt Lake City or hereabout.

We trust that when your committee arrives in Denver January 26th for the hearing as to the location of the Regional Banks in the west, that you will find time to come to Salt Lake City, not only to investigate the advantages offered by it for the location of a Regional Bank, but also to investigate this building with a view of making it both a Regional Bank and a distributing center for the supplies needed by the Banks of the whole west, because of the safety vouchsafed by its fireproof construction and the great advantage of its immediate availability. We might add that the Y.M.C.A. Building across the 10 foot right of way to the north, is also three stories high and of fire-proof construction and the hotel building across the 12 foot right of way on the south is also three stories high and of fire-proof construction. Corners of both of

Regional Banks

(5)

these buildings are shown in the picture which we are sending you. The front portion of the building on each floor is fitted up with fine mahogany finished, medium sized office rooms. The rest of each floor is divided into one or more large rooms, well suited for a large number of desks with good light or for storage of large quantities of supplies in bulk. The City Hall and Police Head Quarters and Central Fire Station are on the property immediately east of the rear of this building across a narrow right of way. Its entrance is on First South Street-- about 100 feet north of the rear of this building. They have the use of the right of way on the south of this building to get to the rear of their property where the jail is located.

It seems to us that this building is eminently well suited for your needs. We know that the price is considerably less than the sum for which the ground could be bought and the building erected, and it would seem that very little money would have to be spent to put it in shape for use as a bank.

If you can suggest any further information in relation to the property that you desire, it will be our pleasure to furnish same promptly and we hope that you will take the time to investigate the property on your western trip.

Trusting we may hear soon from you, we are,

Yours very truly,

TUTTLE BROTHERS COMPANY,

BY



Secretary.



Former
Independent Telephone Co. Building
Salt Lake Utah
(State St, east side,
South of E. 1st South St.)

Suggested for
Regional Bank
by ~~Smith~~ Pros Co Agts
159 Main St.
Salt Lake City Utah

Salt Lake
Utah

No.

This is a tracing from the Saubony-Perris
Fire insurance map of Salt Lake City showing
building (in red) offered by Tuttle Bro. Co. Agts - for the
proposed Regional Bank in Salt Lake, Utah
and the rights of way and all brick & fire proof buildings
surrounding it.

West.

Salt
Lake
City
Utah

East 1st South St.

East

8 in water pipe

132 ft

16 in water pipe

132 ft

③

Drug Store

8 in water main

8 in water main

South State St.

③

3 story
Brick
Y.M.C.A. Building
(Fire proof)

②

City Hall
and
Police
Department

② brick

Central
Fire
Station
+ Auto Fire
Equipment

10'

R of way

Former Independent
Telephone Building
Price - Fire proof -
\$100,000.00

14'

Jail

② brick

②

R of way

12'

Right of way

② story
Brick

Hotel up
Garages
down stairs

① story

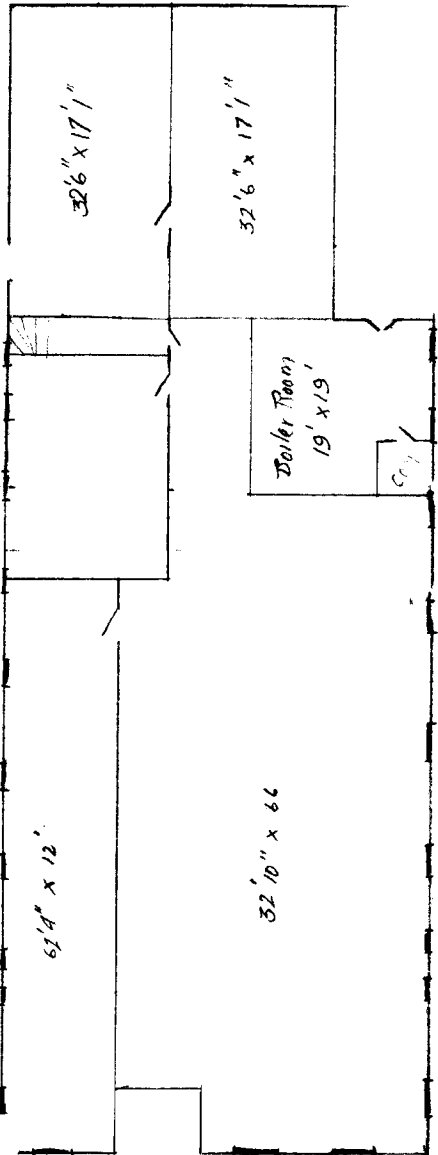
Garage

① brick

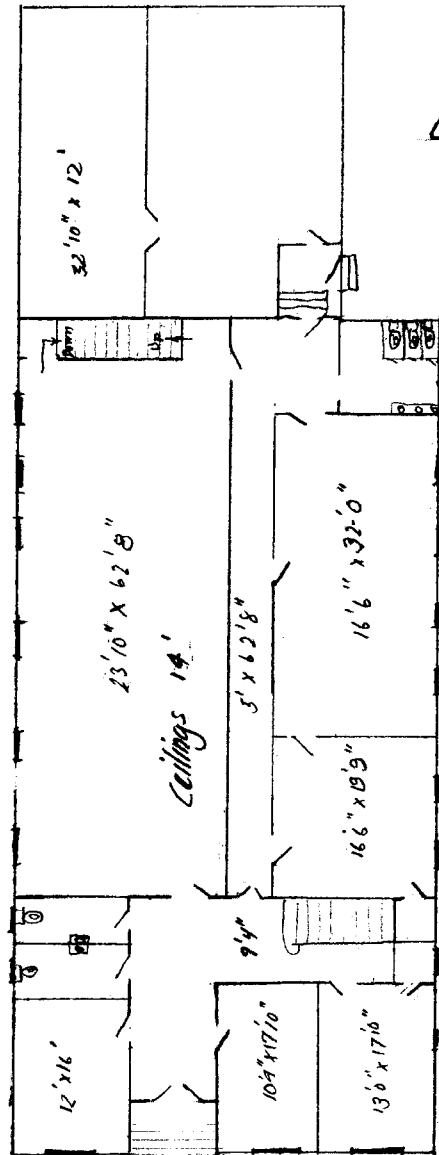
Wagner
Brewing Co.

②

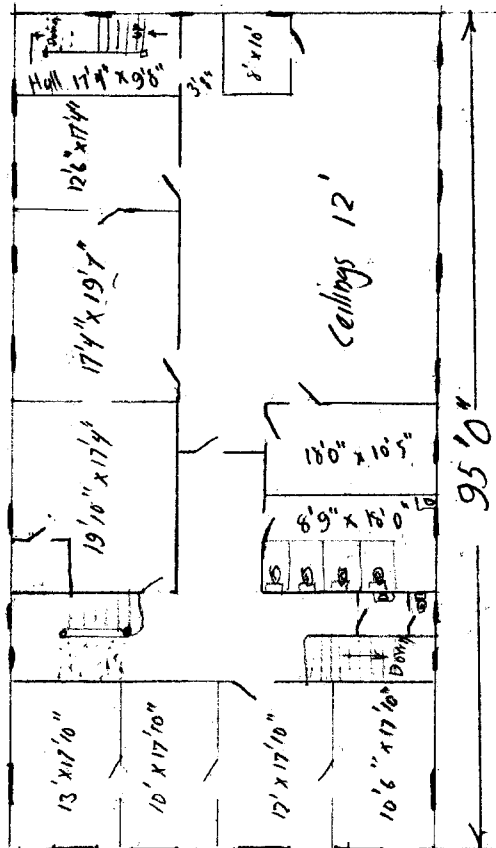
UTAH INDEPENDENT TELEPHONE CO BUILDING SALT LAKE CITY, UTAH



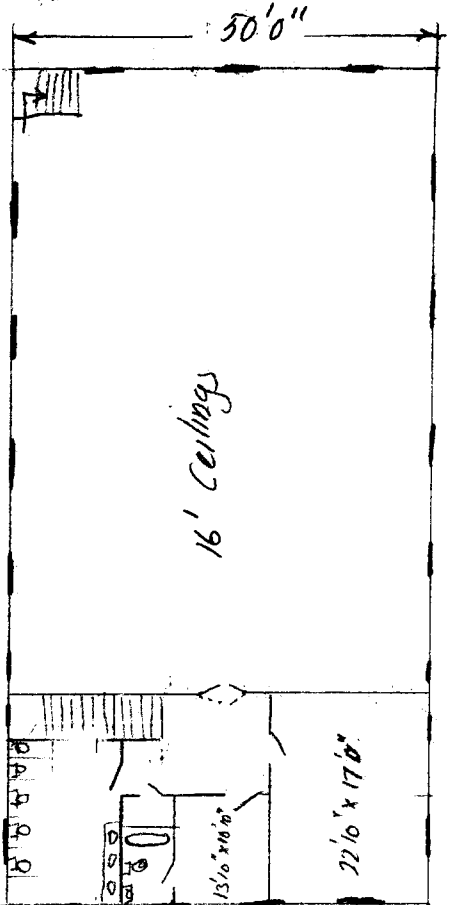
BASEMENT



GROUND FLOOR



SECOND FLOOR



THIRD FLOOR

DENVER & RIO GRANDE SYSTEM

CONDENSED THROUGH TIME CARD
DENVER, COLORADO SPRINGS AND PUEBLO
TO
SACRAMENTO, SAN FRANCISCO, PORTLAND AND LOS ANGELES
Via DENVER & RIO GRANDE R. R. and
SOUTHERN PACIFIC CO.
ALL TRAINS DAILY.
WESTWARD.

Elevation	STATIONS (Mountain Time.)	Miles	No. 5 Chicago and San Francisco Express	No. 8 Pacific Coast Mail	No. 1 Pacific Coast Limited
5279	DENVER	0	9:00 am 1st Day	6:45 pm 1st Day	8:00 am 1st Day
7224	Palmer Lake	52	10:58 am "	7:35 pm "	9:50 am "
5978	Colorado Springs	75	11:45 am "	8:20 pm "	10:35 am "
4668	Pueblo	119	1:20 pm "	9:45 pm "	11:59 am "
5187	Florence	152	2:27 pm "	10:52 pm "	1:06 pm "
5838	Canon City	200	2:50 pm "	11:13 pm "	1:28 pm "
7038	Salida	215	3:30 pm "	1:45 am 2d Day	4:00 pm "
6552	Buena Vista	240	4:30 pm "	2:45 am "	5:00 pm "
10190	Ar Leadville	278	5:30 pm "	3:40 am "	6:05 pm "
10240	Tennessee Pass	281	6:25 pm "	4:40 am "	6:55 pm "
8598	Red Cliff	294	7:05 pm "	5:30 am "	7:40 pm "
7828	Ar Minturn	302	8:30 pm "	6:55 am "	8:00 pm "
7828	Ar Minturn	302	9:40 pm "	8:00 am "	9:05 pm "
6747	GLENWOOD	313	11:45 pm "	9:20 am "	10:15 pm "
5552	NEWCASTLE	318	1:15 am "	10:45 pm "	11:40 pm "
5900	Rifle	326	1:43 am "	11:13 pm "	12:08 pm "
6105	Grand Valley	404	1:15 am "	9:51 am "	10:46 pm "
4729	Palisade	437	2:19 am "	10:56 am "	11:51 pm 2d Day
4578	AR GRAND JUNC.	450	2:45 am "	11:21 am "	1:10 am "
5279	DENVER	0	9:00 pm 1st Day	6:45 pm 1st Day	8:00 am 1st Day
6208	Castle Rock	32	10:08 pm "	7:35 pm "	9:50 am "
7224	Palmer Lake	52	11:08 pm "	8:35 pm "	10:50 am "
5978	Colorado Springs	75	11:48 pm "	9:15 pm "	11:30 am "
4668	Pueblo	119	1:05 am 2d Day	10:00 pm "	12:15 am "
5187	Florence	151	1:15 am "	10:10 pm "	12:25 am "
5838	Canon City	193	1:45 am "	10:40 pm "	12:55 am "
7038	Salida	215	2:30 am "	11:25 pm "	1:40 am "
10846	Marshall Pass	240	3:35 am "	12:30 am "	2:45 am "
7673	Gunnison	299	4:35 am "	1:30 am "	3:45 am "
7245	Sapinero	314	5:15 am "	2:10 am "	4:25 am "
6396	Camarero	344	6:00 am "	3:00 am "	5:15 am "
7856	Cerro Summit	365	6:45 am "	3:45 am "	6:00 am "
5801	Montrose	382	7:35 am "	4:35 am "	6:50 am "
6355	Olathe	391	8:30 am "	5:30 am "	7:45 am "
4970	Ar Delta	378	9:35 am "	6:35 am "	8:50 am "
4578	AR GRAND JUNC.	424	10:00 am "	7:10 am "	9:25 am "
4578	AR GRAND JUNC.	451	11:35 am 2d Day	8:45 pm 2d Day	1:20 am 2d Day
4500	Ar Fruita	451	12:11 am "	9:30 pm "	1:55 am "
4540	Mack	489	1:11 am "	10:30 pm "	2:55 am "
4470	Cisco	505	1:57 am "	11:15 pm "	3:41 am "
5150	Thompson	528	2:49 am "	12:05 pm "	4:31 am "
4060	Green River	555	3:36 am "	1:00 pm "	5:20 am "
5547	Price	623	4:25 am "	1:50 pm "	6:10 am "
5840	Helper	627	5:15 am "	2:40 pm "	7:00 am "
6120	Castle Gate	630	6:10 am "	3:35 pm "	7:50 am "
7071	Colton	645	7:10 am "	4:35 pm "	8:50 am "
7454	Soldier Summit	636	8:10 am "	5:35 pm "	9:50 am "
5038	Thistle	677	9:15 am "	6:40 pm "	10:30 am "
4512	Provo	691	10:15 am "	7:40 pm "	11:20 am "
4550	American Fork	710	11:15 am "	8:40 pm "	12:20 pm "
4365	Midvale	730	12:15 pm "	9:40 pm "	1:20 pm "
4224	Ar Salt Lake City	741	1:25 pm "	10:55 pm "	12:40 pm "
4224	Ar Salt Lake City	741	2:55 pm "	11:10 pm "	12:40 pm "
4286	AR OGDEN	728	4:00 pm "	12:10 am 3d Day	1:45 pm "
4296	OGDEN (Mtn. Time)	778	5:40 pm "	1:40 am "	3:10 pm "
4296	OGDEN (Mtn. Time)	778	7:40 pm "	3:40 am "	5:10 pm "
5025	Wells	958	10:45 pm "	6:40 am "	8:10 pm "
6035	Elko	1006	12:02 am 3d Day	8:00 am "	9:30 pm "
4940	Palisade	1037	1:26 am "	9:00 am "	10:30 pm "
4541	Ar Battle Mountain	1087	2:17 am "	9:50 am "	11:20 pm "
4932	Ar Sparks	1317	3:15 am "	10:40 am "	12:10 pm "
4882	Ar Sparks	1317	4:15 am "	11:40 am "	1:00 pm "
4497	Ar Reno	1320	5:22 am "	12:58 am "	2:28 pm "
5819	Truckee	1355	6:17 am "	1:43 am "	3:13 pm "
2422	Colfax	1420	7:30 am "	2:55 am "	4:25 pm "
30	SACRAMENTO	1474	9:00 am "	4:25 pm "	5:55 pm "
5900	Ar Oakland	1553	7:52 pm "	3:15 pm "	4:45 pm "
12	AR SAN FRANCISCO	1564	8:30 pm "	4:00 pm "	5:30 pm "
12	AR SAN FRANCISCO	1564	10:20 pm "	5:50 pm "	7:20 pm "
5574	REDDING	1544	11:50 pm 4th Day	7:20 pm 5th Day	8:50 pm 5th Day
1890	Ar Ashland	1715	1:20 pm "	9:00 pm "	10:30 pm "
487	Ar Roseburg	1868	3:15 pm "	11:15 pm "	12:45 pm "
240	Ar Albany	1975	4:30 am 5th Day	12:40 pm 6th Day	1:10 pm 6th Day
63	AR PORTLAND	2156	7:40 am "	2:50 pm "	4:20 pm "
201	Ar Tacoma (No. Pac.)	2301	9:35 pm "	4:55 pm "	6:25 pm "
2342	Ar Seattle	2342	10:45 pm "	6:05 pm "	7:35 pm "
2301	Ar Tacoma (O-W R.&N.)	2301	1:35 pm "	8:05 pm "	9:35 pm "
2342	Ar Seattle	2342	2:45 pm "	9:15 pm "	10:45 pm "
298	AR LOS ANGELES (Via S.P.)	1922	7:05 am 4th Day	8:15 am 5th Day	9:45 am 5th Day
298	AR LOS ANGELES (Via Coast L.)	2048	8:45 am "	9:55 am "	11:25 am "

† Except Sunday. † Meals. † Stub trains from Malta.
‡ Tourist Cars on No. 5 arrive Los Angeles at 2:00 pm.
b Stops to discharge passengers from east of Grand Junction.

DENVER & RIO GRANDE SYSTEM

CONDENSED THROUGH TIME CARD
LOS ANGELES, PORTLAND, SAN FRANCISCO AND SACRAMENTO
TO
PUEBLO, COLORADO SPRINGS AND DENVER
Via SOUTHERN PACIFIC CO. and
DENVER & RIO GRANDE R. R.
ALL TRAINS DAILY.
EASTWARD.

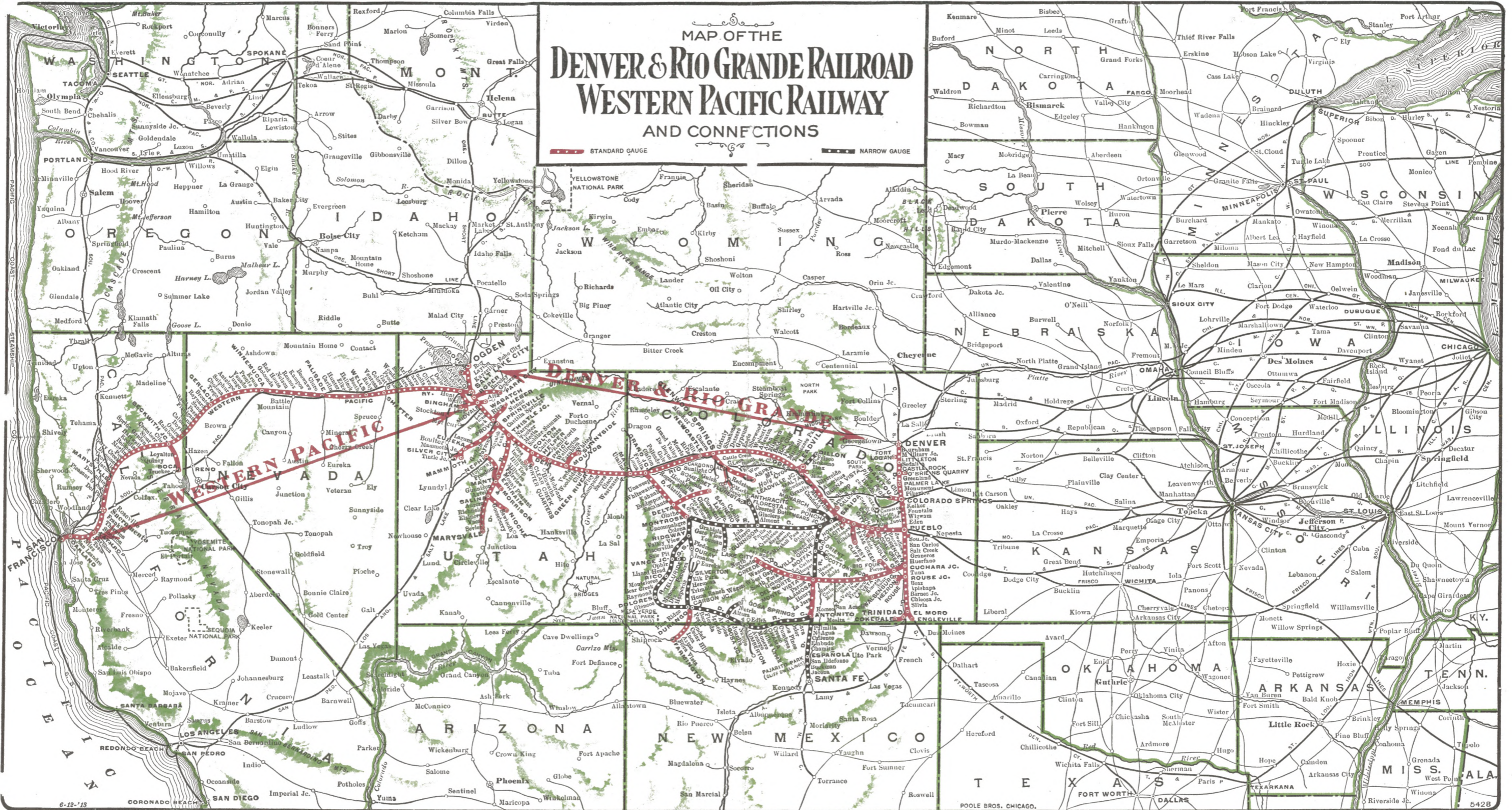
Elevation	STATIONS (Pacific Time.)	Miles	No. 6 San Francisco-Chicago Express	No. 2 Atlantic Coast Limited	No. 20-4 Atlantic Coast Mail
298	LOS ANGELES	0	2:30 pm	5:00 pm	6:00 pm
298	LOS ANGELES	0	7:30 pm	11:45 pm	12:00 pm
298	LOS ANGELES (Via San Joaquin Valley Line)	0	11:30 am	11:45 am	12:00 pm
298	Ar Seattle (O-W R.&N.)	1130	1:30 am	1:45 am	2:00 pm
298	Ar Tacoma	1140	2:15 am	2:30 am	2:45 pm
298	Ar Seattle (No. Pac.)	1145	3:15 am	3:30 am	3:45 pm
298	Ar Tacoma	1155	4:15 pm	4:30 pm	4:45 pm
298	AR PORTLAND	1300	5:15 pm	5:30 pm	5:45 pm
298	Ar Albany	1310	6:15 pm	6:30 pm	6:45 pm
298	Ar Roseburg	1320	7:15 pm	7:30 pm	7:45 pm
298	Ar Ashland	1330	8:15 pm	8:30 pm	8:45 pm
298	REDDING	1340	9:15 pm	9:30 pm	9:45 pm
298	AR SAN FRANCISCO	1400	10:15 pm	10:30 pm	10:45 pm
12	AR SAN FRANCISCO	0	6:40 pm 1st Day	10:20 am 1st Day	11:20 am 1st Day
12	Ar Oakland (16th St.)	96	7:17 pm "	10:57 am "	11:57 am "
12	SACRAMENTO	96	8:07 pm 2d Day	11:47 am "	12:47 am "
2422	Ar Colfax	144	9:00 am "	12:40 pm "	1:40 pm "
5819	Truckee	144	10:00 am "	1:40 pm "	2:40 pm "
4497	Ar Reno	209	7:00 am "	10:40 pm "	11:40 pm "
4932	Ar Sparks	244	8:40 am "	12:20 pm "	1:20 pm "
4932	Ar Sparks	247	9:15 am "	1:05 pm "	2:05 pm "
4511	Battle Mountain	247	9:20 am "	1:10 pm "	2:10 pm "
4578	Palisade	452	6:57 pm "	10:37 am 2d Day	11:37 am "
5035	Elko	558	8:13 pm "	11:50 am "	12:50 pm "
4500	Ar Wells	614	9:52 pm "	1:30 pm "	2:30 pm "
4292	AR OGDEN (Mtn. Time)	838	5:20 am 3d Day	11:55 am "	12:55 pm "
4292	AR OGDEN (Mtn. Time)	838	6:20 am "	12:55 pm "	1:55 pm "
4292	Ar Salt Lake City	870	7:40 am "	1:15 pm 1st Day	2:15 pm 1st Day
4224	Ar Salt Lake City	870	7:55 am "	1:30 pm "	2:30 pm "
4365	Midvale	881	8:55 am "	2:30 pm "	3:30 pm "
4350	Lehi	888	9:55 am "	3:30 pm "	4:30 pm "
6396	American Fork	914	10:55 am "	4:30 pm "	5:30 pm "
4512	Provo	914	11:55 am "	5:30 pm "	6:30 pm "
4555	Springville	920	12:55 pm "	6:30 pm "	7:30 pm "
5038	Thistle	984	1:55 am "	7:30 pm "	8:30 pm "
7154	Soldier Summit	939	2:55 pm "	8:30 pm "	9:30 pm "
7071	Colton	968	3:55 pm "	9:30 pm "	10:30 pm "
6120	Castle Gate	991	4:55 pm "	10:30 pm "	11:30 pm "
5840	Helper	984	5:55 pm "	11:30 pm "	12:30 pm "
5547	Price	991	6:55 pm "	12:30 pm "	1:30 pm "
4080	Green River	1058	7:55 pm "	1:30 pm "	2:30 pm "
5150	Thompson	1083	8:55 pm "	2:30 pm "	3:30 pm "
4470	Cisco	1106	9:55 pm "	3:30 pm "	4:30 pm "
4500	Ar Fruita	1140	10:55 pm 2d Day	4:30 pm 2d Day	5:30 pm 2d Day
4578	AR GRAND JUNC.	1161	11:55 pm "	5:30 am 3d Day	6:30 am 3d Day
4578	AR GRAND JUNC.	1161	12:55 pm "	6:30 am "	7:30 am "
4970	Ar Delta	1212	1:55 am "	7:30 am "	8:30 am "
5355	Olathe	1223	2:55 am "	8:30 am "	9:30 am "
5801	Montrose	1233	3:55 am "	9:30 am "	10:30 am "
7858	Cerro Summit	1250	4:55 am "	10:30 am "	11:30 am "
6396	Camarero	1256	5:55 am "	11:30 am "	12:30 pm "
7245	Sapinero	1271	6:55 am "	12:30 pm "	1:30 pm "
7673	Gunnison	1296	7:55 am "	1:30 pm "	2:30 pm "
10856	Marshall Pass	1344	8:55 am "	2:30 pm "	3:30 pm "
7038	Ar Salida	1370	9:55 am "	3:30 pm "	4:30 pm "
5838	Ar Canon City	1411	10:55 am 3d Day	4:30 pm 3d Day	5:30 pm 3d Day
5187	Florence	1459	11:55 am "	5:30 pm "	6:30 pm "
4668	Pueblo	1467	12:55 pm "	6:30 pm "	7:30 pm "
5978	Colorado Springs	1510	1:40 am "	7:30 pm "	8:30 pm "
7224	Ar Palmer Lake	1532	2:40 am "	8:30 pm "	9:30 pm "
5279	AR DENVER	1564	3:40 am "	9:30 pm "	10:30 pm "
4578	AR GRAND JUNC.	1161	7:40 pm 3d Day	11:10 am 2d Day	12:10 am 3d Day
4729	Palisade	1178	8:03 pm "	11:30 am "	12:30 am "
5105	Grand Valley	1207	9:10 pm "	12:40 pm "	1:40 pm "
5900	Rifle	1224	10:10 pm "	1:40 pm "	2:40 pm "
5552	Ar New Castle	1238	11:15 pm "	2:40 pm "	3:40 pm "
5747	Ar GLENWOOD	1250	12:15 pm "	3:40 pm "	4:40 pm "
7828	Ar Minturn	1330	1:15 am 4th Day	4:40 pm "	5:40 pm "
5838	Ar RED CLIFF	1317	2:15 am "	5:40 pm "	6:40 pm "
10240	Tennessee Pass	1380	3:20 am "	6:40 pm "	7:40 pm "
10190	Ar Leadville	1341	4:20 am "	7:40 pm "	8:40 pm "
7958	Ar Buena Vista	1371	5:20 am "	8:40 pm "	9:40 pm "
7038	Ar Salida	1396	6:20 am "	9:40 pm "	10:40 pm "
5355	Canon City	1451	7:20 am "	10:40 pm "	11:40 pm "
4668	Pueblo	1492	8:20 am "	11:40 pm "	12:40 pm "
5978	Ar Colorado Springs	1538	9:20 am "	12:40 pm "	1:40 pm "
7224	Ar Palmer Lake	1557	10:20 am "	1:40 pm "	2:40 pm "
5279	AR DENVER	1611	11:20 am "	2:40 pm "	3:40 pm "

† Except Sunday. † Meals. † Stub trains from Malta. f Stops on signal.
a Stops to receive passengers for east of Grand Junction.

DENVER & RIO GRANDE SYSTEM

CONDENSED THROUGH TIME CARD
DENVER, COLORADO SPRINGS AND PUEBLO
TO
LOS ANGELES, PASADENA AND SAN PEDRO
Via DENVER & RIO GRANDE R. R. and
SAN PEDRO, LOS ANGELES & SALT LAKE R. R.
ALL TRAINS DAILY.
WESTWARD.

Elevation	STATIONS (Mountain Time.)	Miles	No. 5-7 Chicago and San Francisco Express	No. 5-1 Pacific Coast Mail	No. 1 Pacific Coast Limited
5279	DENVER	0	9:00 am 1st Day	5:45 pm 1st Day	8:00 am 1st Day
7224	Palmer Lake	52	10:58 am "	7:35 pm "	9:50 am "
5978	Colorado Springs	75	11:45 am "	8:20 pm "	10:35 am "
4668	Pueblo	119	1:20 pm "	9:45 pm "	11:59 am "
5187					



MAP OF THE DENVER & RIO GRANDE RAILROAD WESTERN PACIFIC RAILWAY AND CONNECTIONS

STANDARD GAUGE NARROW GAUGE

Reproduced from the Unclassified / Declassified Holdings of the National Archives

REAL ESTATE

MORTGAGE LOANS

INVESTMENTS

FIRE INSURANCE

ESTATES MANAGED

RENTALS

ESTABLISHED 1871

EASTERN OFFICE
GRAND RAPIDS, MICHIGAN

Tuttle Brothers Company, Inc.

CAPITAL \$50,000

Investment Bankers

WALTER G. TUTTLE, PresT.

SERENO B. TUTTLE, Secy.

FREEMAN MORNINGSTAR

MARCELLUS S. WOOLLEY

A. BLAIR RICHARDSON

MARCUS M. TUTTLE

FRANK BECKWITH

ROBERT S. NORTHROP

ARTHUR H. PARSONS

Tributary

159 MAIN STREET
SALT LAKE CITY, UTAH

Tributary Territory of Regional Bank of Salt Lake -

all of Utah covered by { S & R G Ry -
with its mining, smelting, } Union Pacific Ry
& sugar refining interests. } Southern Pacific
O. S. L. Ry. } and Smelter & Mine
Western Pacific } branches to Garfield,
Los Angeles & Salt Lake } Toole, Bingham,
Park City - Tropic &c

all of Southern & Eastern Idaho { fed by O. S. L. Ry. + several branches
and sugar refineries + Yellowstone Park

all of Western Montana { covered by O. S. L. Ry. + large mines -

all of Southern & So. Western Wyoming { covered by Union Pacific Ry
+ immense coal fields -

Western Colorado { covered by the S & R G Ry -

Eastern Nevada { covered by Western Pacific Ry
Southern Pacific Ry

Southern Nevada { covered by Los Angeles & Salt Lake Ry
with branch or feeder to Tonopah & Goldfield.

Reproduced from the Unclassified / Declassified Holdings of the National Archives