



MAP  
SHOWING THE  
**ILLITERACY OF THE AGGREGATE POPULATION.**

Compiled from the Returns of Population at the Ninth Census  
OF THE UNITED STATES 1870.

BY  
FRANCIS AWALKER.

*Note: In the construction of this Map the total No. of persons  
10 years of age and upwards is compared with the No. of such  
persons who cannot read.*

**Explanations.**

The Blue Lines indicate the boundaries of groups of Population  
The Figures in Blue 2 18 45 45 express the number of inhabitants  
to the Square Mile found within each group  
The Shaded Lines in Blue indicate the outside limit of a population  
of 2 or more to the Square Mile. The shading points towards the  
regions which have a population of less than 2 to the Square Mile  
*Note: The occasional abrupt intervals between the shaded portions  
and the line of no population, are doubtless due in many cases to errors  
in the Census returns, incident to the sparseness of settlement.*

**SCALE**

Under 5 Per cent .....  
From 5-12 .....  
12-20 .....  
20-40 .....  
40-60 .....  
60 and over.....

I
II
III
IV
V





MAP  
SHOWING THE  
ILLITERACY  
OF THE  
ADULT WHITE MALE POPULATION.

Compiled from the Returns of Population at the Ninth Census  
OF THE UNITED STATES 1870.  
BY  
FRANCIS A WALKER.

*Note: In the construction of this Map the whole N<sup>o</sup> of  
White Males 21 years of age and upwards is compared  
with the N<sup>o</sup> of such persons who cannot write.*

*Explanations.*  
The Blue Lines indicate the boundaries of Groups of Population  
The Figures in Blue 2 4 6 10 45 45 express the number of inhabitants  
to the Square Mile found within each group  
The Shaded Lines in Blue indicate the outside limit of a population  
of 2 or more to the Square Mile. The shading points towards the  
regions which have a population of less than 2 to the Square Mile.  
*Note: The occasional abrupt intervals between the shaded portions  
and the line of no population are doubtless due in many cases to errors  
in the Census returns, incident to the sparseness of settlement.*

SCALE

Under 5 Per cent.	I
From 5.12	II
12.20	III
20.40	IV
40.60	V
60 and over	



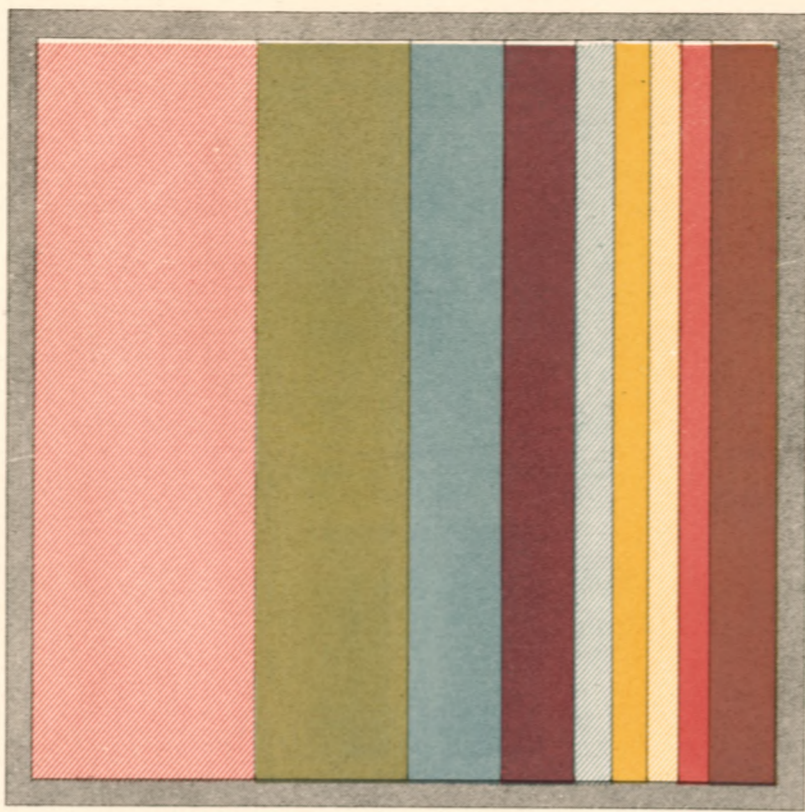
### CHART SHOWING THE RATIO OF CHURCH ACCOMMODATION

TO THE TOTAL POPULATION OVER 10 YEARS OF AGE  
WITH THE PROPORTION OF SUCH CHURCH ACCOMMODATION FURNISHED BY EACH OF  
THE LARGEST FOUR DENOMINATIONS WITHIN EACH STATE AND BY EACH OF  
THE LARGEST EIGHT DENOMINATIONS WITHIN THE UNITED STATES.

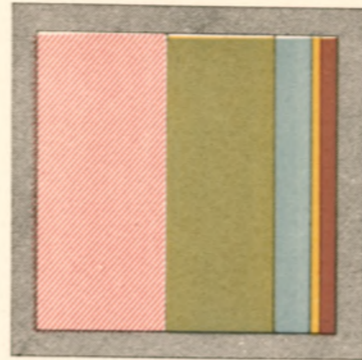
Compiled from the Social Statistics of the Ninth Census 1870

BY  
FRANCIS A. WALKER.

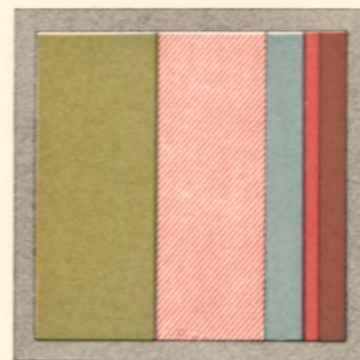
*Note: The interior squares represent the proportion of the population which is provided for by the aggregate sittings in the churches of all denominations. The shaded interval between the inner and outer squares represents the population for which no church accommodation is provided. Where the aggregate church accommodation equals or exceeds the population over 10 years of age the shaded interval disappears.*



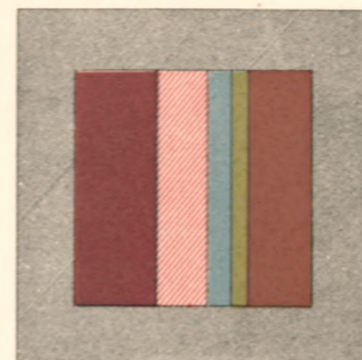
THE UNITED STATES



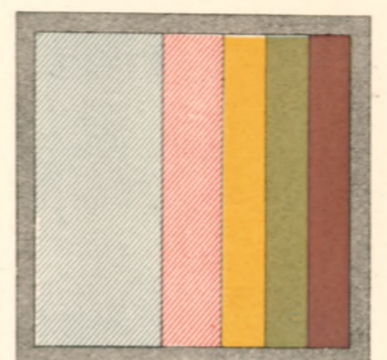
ALABAMA



ARKANSAS



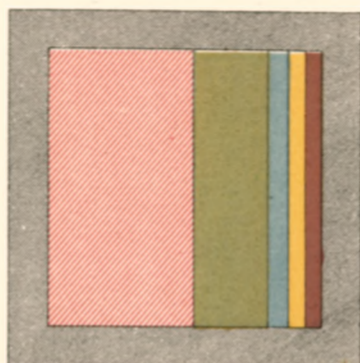
CALIFORNIA



CONNECTICUT



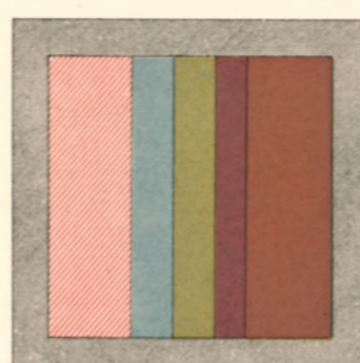
DELAWARE



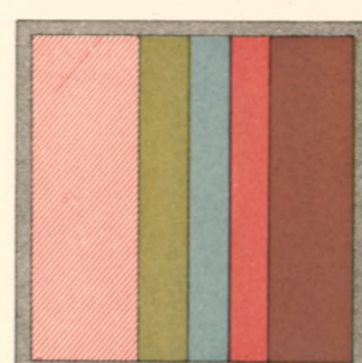
FLORIDA



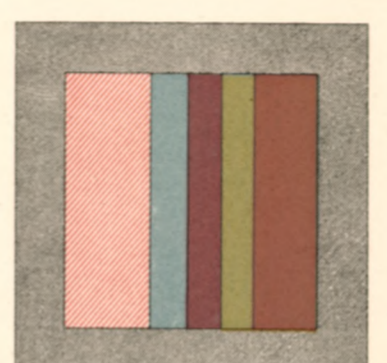
GEORGIA



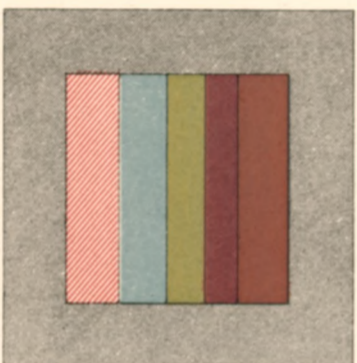
ILLINOIS



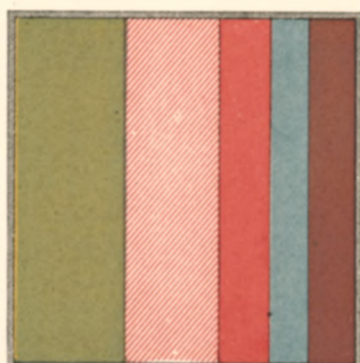
INDIANA



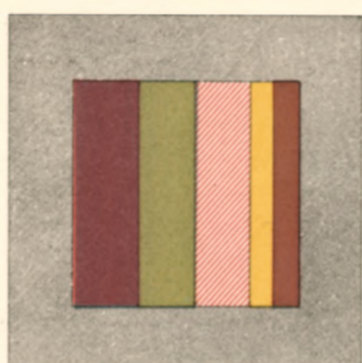
IOWA



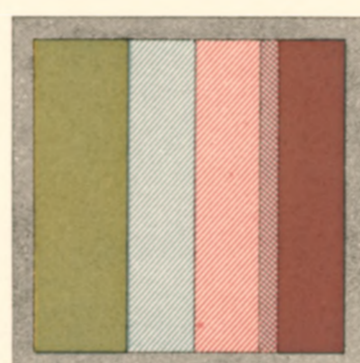
KANSAS



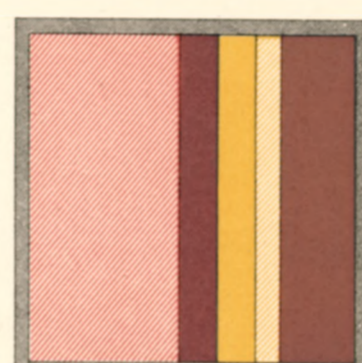
KENTUCKY



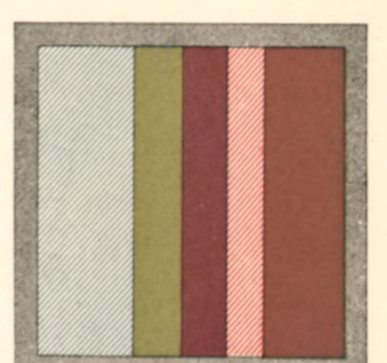
LOUISIANA



MAINE



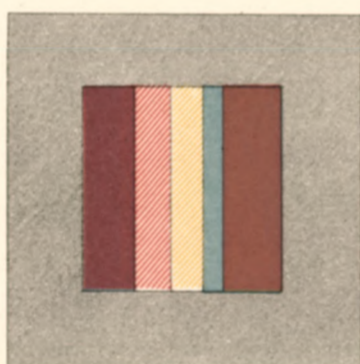
MARYLAND



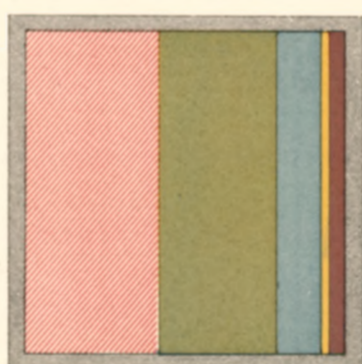
MASSACHUSETTS



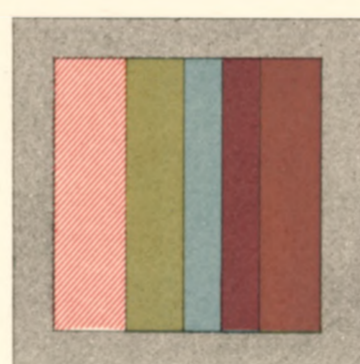
MICHIGAN



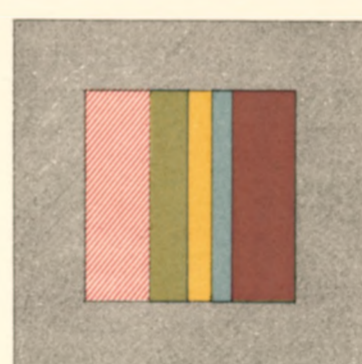
MINNESOTA



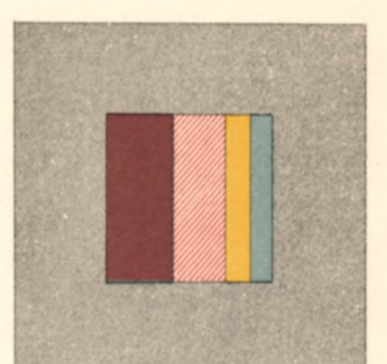
MISSISSIPPI



MISSOURI



NEBRASKA



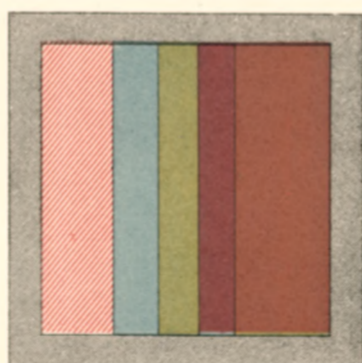
NEVADA



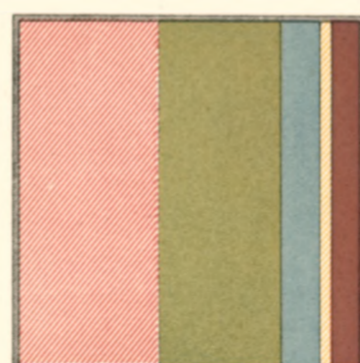
NEW HAMPSHIRE



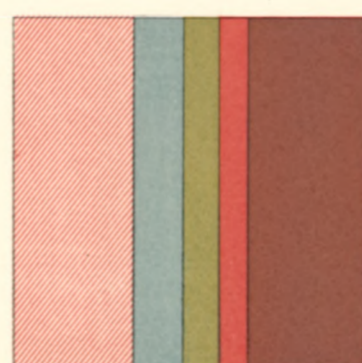
NEW JERSEY



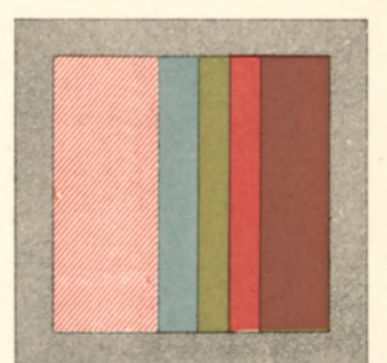
NEW YORK



NORTH CAROLINA



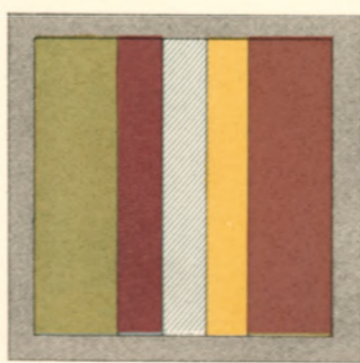
OHIO



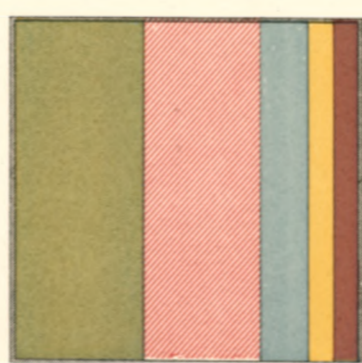
OREGON



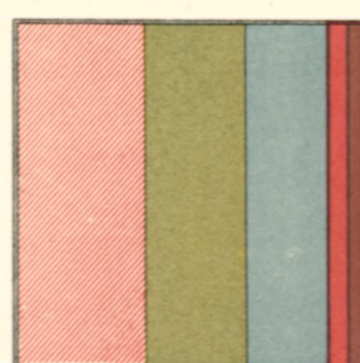
PENNSYLVANIA



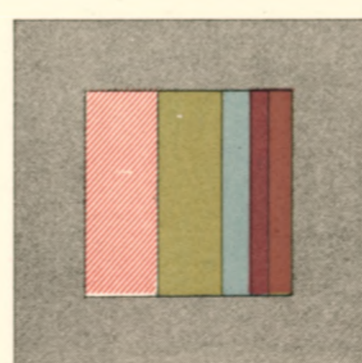
RHODE ISLAND



SOUTH CAROLINA



TENNESSEE



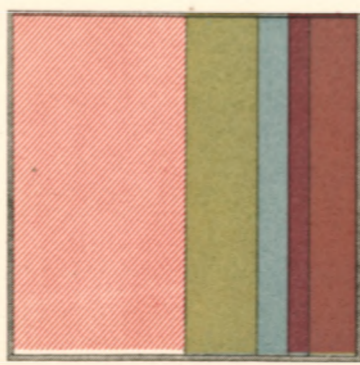
TEXAS



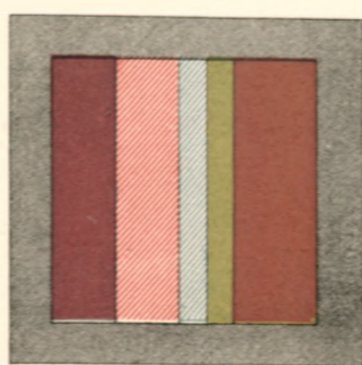
VERMONT



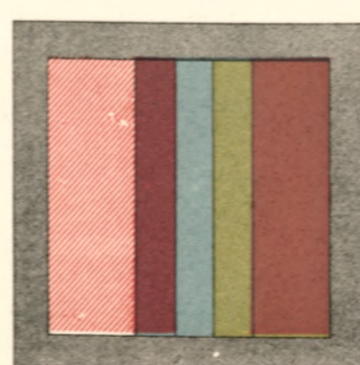
VIRGINIA



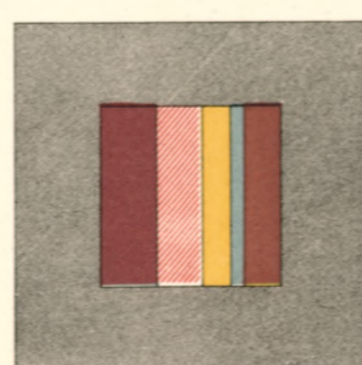
WEST VIRGINIA



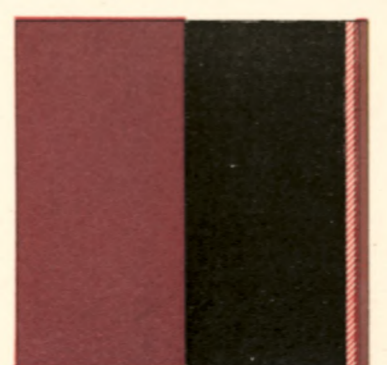
WISCONSIN



DISTRICT OF COLUMBIA



NORTH WEST TERRITORIES



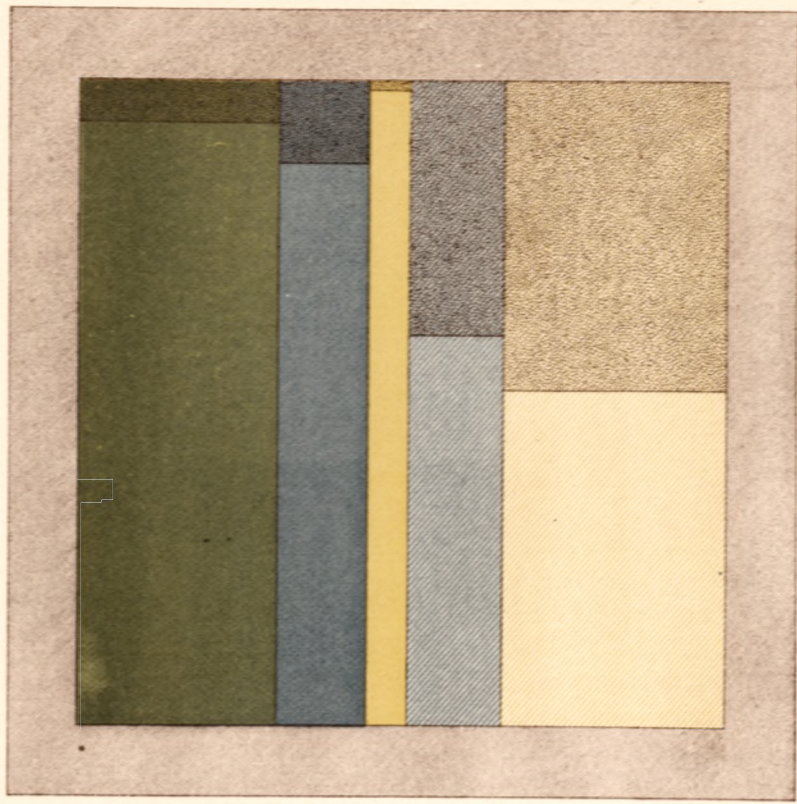
SOUTH WEST TERRITORIES



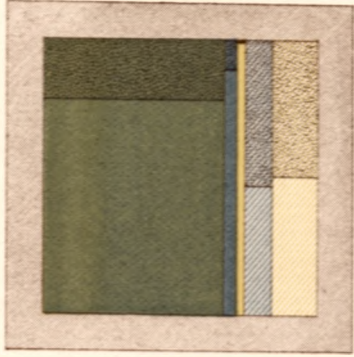
**CHART**  
 SHOWING FOR THE UNITED STATES AND FOR EACH STATE,  
 WITH DISTINCTION OF SEX, THE RATIO  
 BETWEEN THE TOTAL POPULATION OVER 10 YEARS OF AGE  
 AND THE NUMBER OF PERSONS REPORTED AS ENGAGED IN EACH PRINCIPAL CLASS OF  
**GAINFUL OCCUPATIONS**  
 AND ALSO AS  
**ATTENDING SCHOOL.**  
 Compiled from the Returns of Population at the Ninth Census 1870  
 BY  
**FRANCIS A. WALKER.**



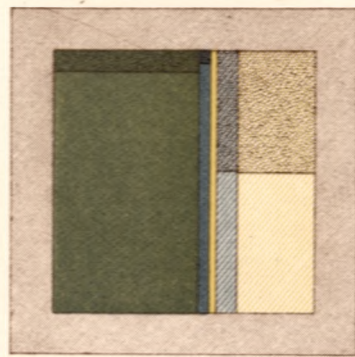
*Note: The interior squares represent the proportion of the population which is accounted for as engaged in gainful occupations or as attending school. The shaded intervals between the inner and outer squares represent the proportion of the population not so accounted for.*



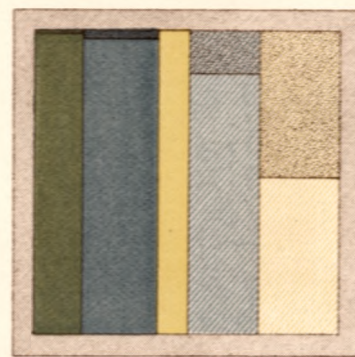
THE UNITED STATES



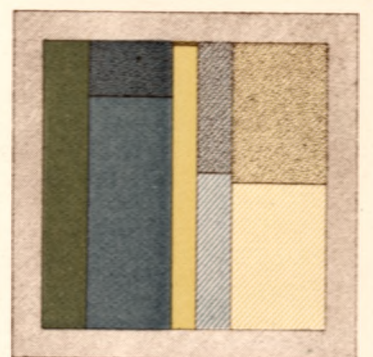
ALABAMA



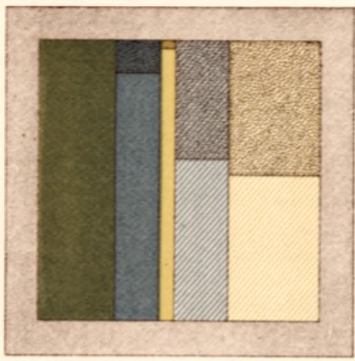
ARKANSAS



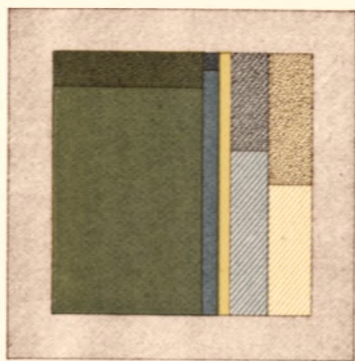
CALIFORNIA



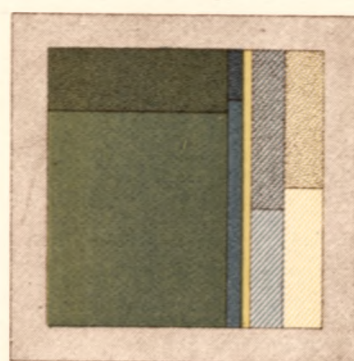
CONNECTICUT



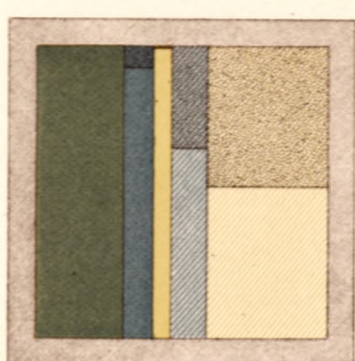
DELAWARE



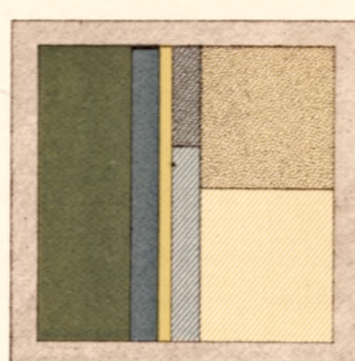
FLORIDA



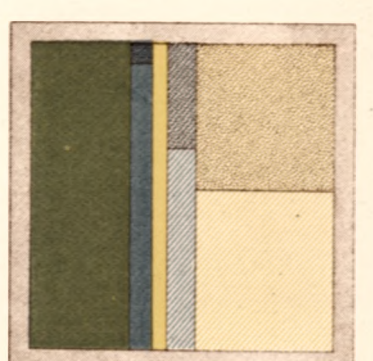
GEORGIA



ILLINOIS



INDIANA



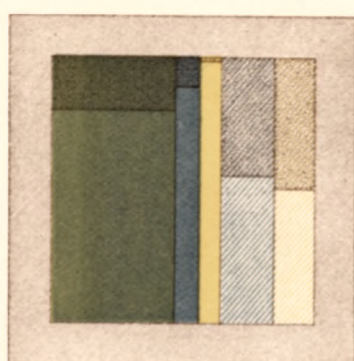
IOWA



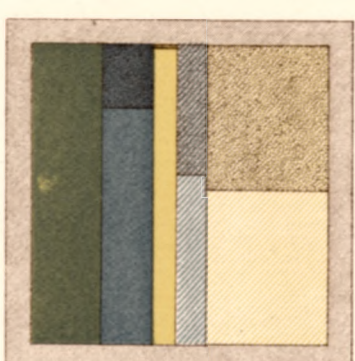
KANSAS



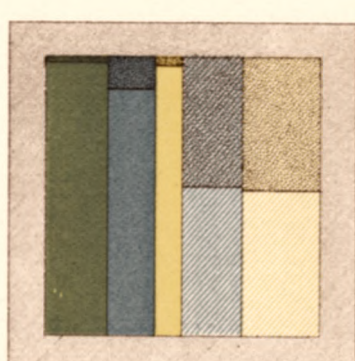
KENTUCKY



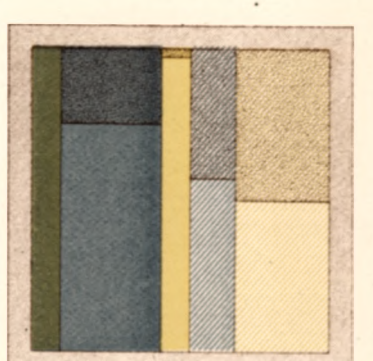
LOUISIANA



MAINE



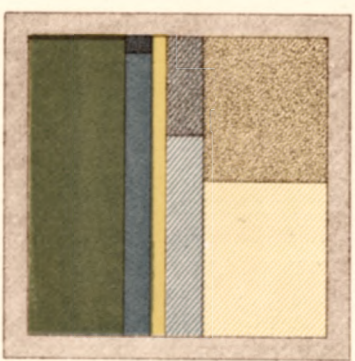
MARYLAND



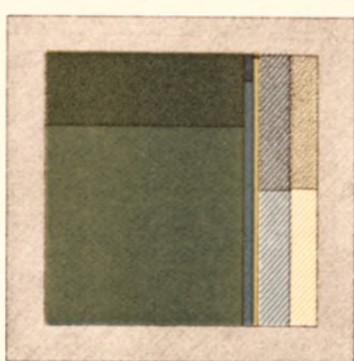
MASSACHUSETTS



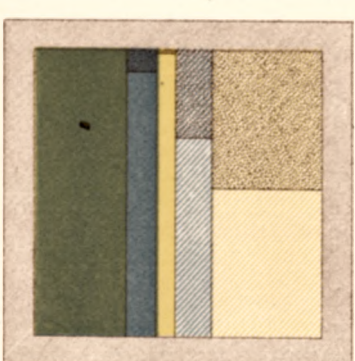
MICHIGAN



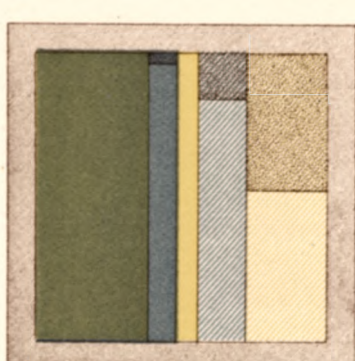
MINNESOTA



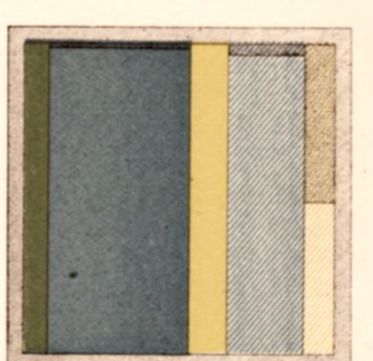
MISSISSIPPI



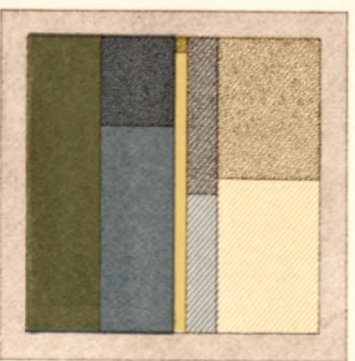
MISSOURI



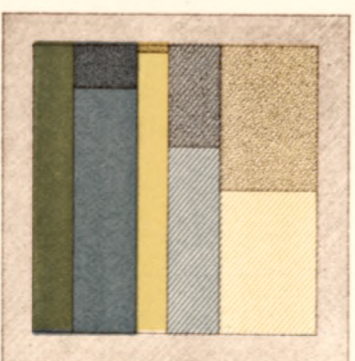
NEBRASKA



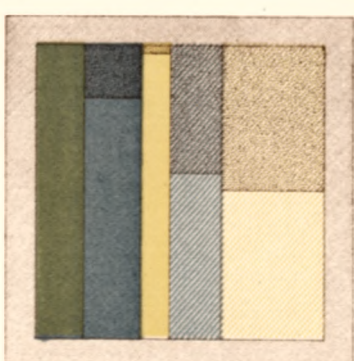
NEVADA



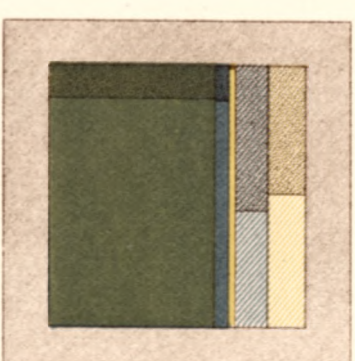
NEW HAMPSHIRE



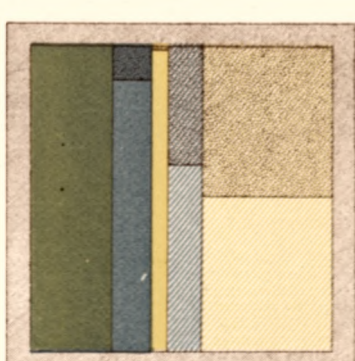
NEW JERSEY



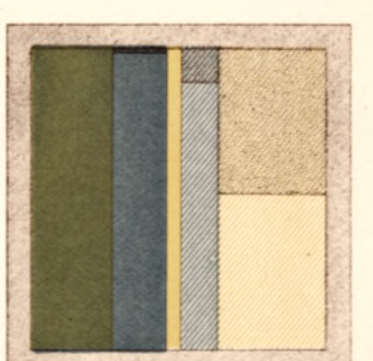
NEW YORK



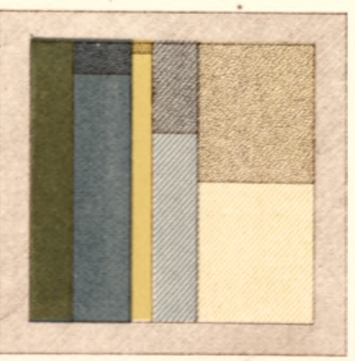
NORTH CAROLINA



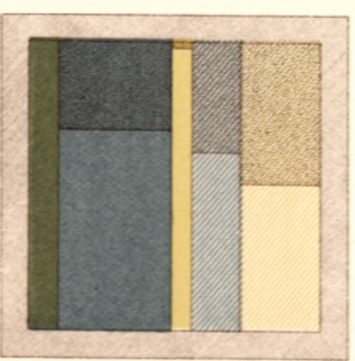
OHIO



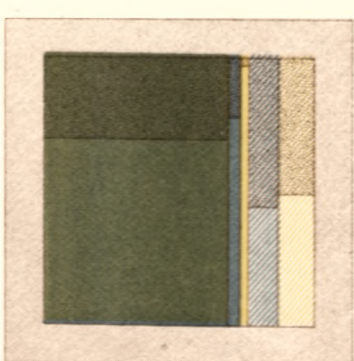
OREGON



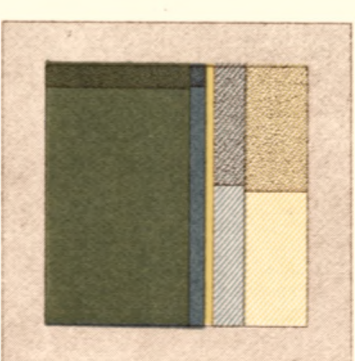
PENNSYLVANIA



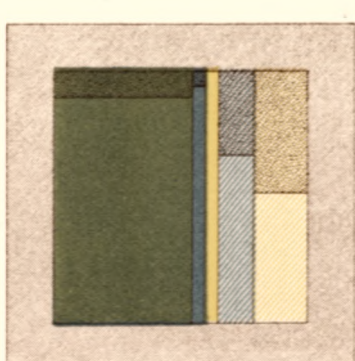
RHODE ISLAND



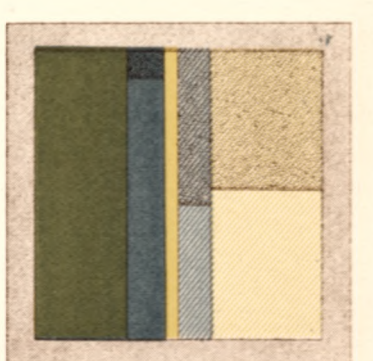
SOUTH CAROLINA



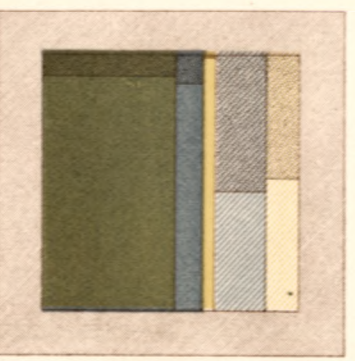
TENNESSEE



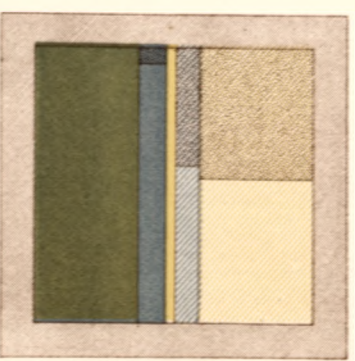
TEXAS



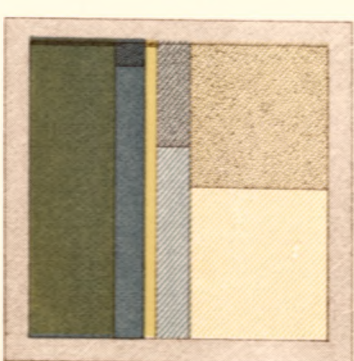
VERMONT



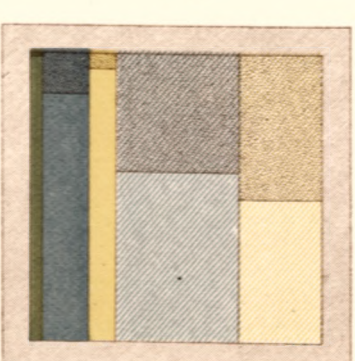
VIRGINIA



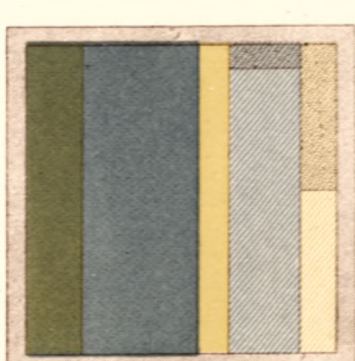
WEST VIRGINIA



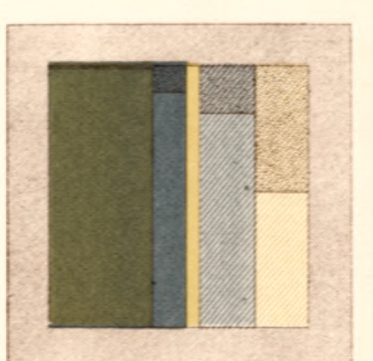
WISCONSIN



DISTRICT OF COLUMBIA

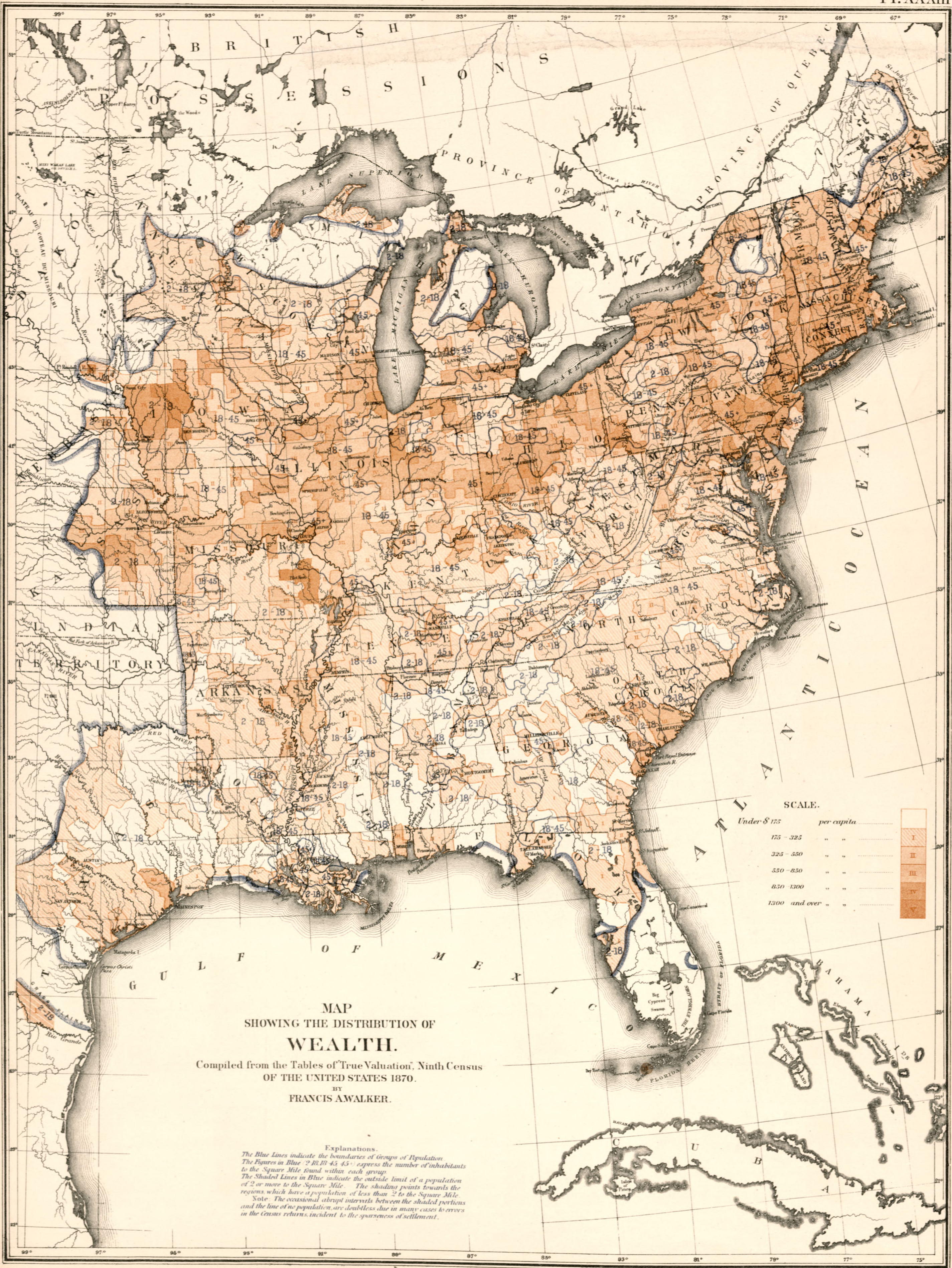


NORTH WEST TERRITORIES



SOUTH WEST TERRITORIES





MAP  
SHOWING THE DISTRIBUTION OF  
WEALTH.

Compiled from the Tables of "True Valuation", Ninth Census  
OF THE UNITED STATES 1870.

BY  
FRANCIS AWALKER.

**Explanations.**  
 The Blue Lines indicate the boundaries of Groups of Population  
 The Figures in Blue 2 18 18 45 45 express the number of inhabitants  
 to the Square Mile found within each group  
 The Shaded Lines in Blue indicate the outside limit of a population  
 of 2 or more to the Square Mile. The shading points towards the  
 regions which have a population of less than 2 to the Square Mile.  
 Note. The occasional abrupt intervals between the shaded portions  
 and the line of no population are doubtless due in many cases to errors  
 in the census returns, incident to the sparseness of settlement.

SCALE.

Under \$ 175	per capita
175 - 325	I
325 - 550	II
550 - 850	III
850 - 1300	IV
1300 and over	V







**MAP  
SHOWING THE DEGREE OF  
PUBLIC INDEBTEDNESS PER CAPITA.**

CONTRACTED BY STATE, COUNTY OR MUNICIPAL AUTHORITY,  
AT THE CLOSE OF THE FISCAL YEAR NEAREST THE CENSUS YEAR.

Compiled from the Statistics of Wealth, Taxation and Public Indebtedness  
at the Ninth Census  
OF THE UNITED STATES 1870.

BY  
**FRANCIS A. WALKER.**

*Explanations*  
The Blue Lines indicate the boundaries of Groups of Population  
The Figures in Blue "2, 10, 45, 45" express the number of inhabitants to the Square Mile found within each group  
The Shaded Lines in Blue indicate the outside limit of a population of 2 or more to the Square Mile. The shading points towards the regions which have a population of less than 2 to the Square Mile.  
Note: The occasional abrupt intervals between the shaded portions and the line of no population are doubtless due in many cases to errors in the census returns incident to the sparseness of settlement.

SCALE

Under \$1 per Capita  
\$1.5  
\$5.0  
\$10.20  
\$20.04  
\$34.80 and over







MAP  
SHOWING THE DEGREE OF  
**TAXATION PER CAPITA**  
IMPOSED BY STATE, COUNTY OR MUNICIPAL AUTHORITY,  
WITHIN THE FISCAL YEAR NEAREST THE CENSUS YEAR.  
Compiled from the Statistics of Wealth Taxation and Public Indebtedness  
at the Ninth Census  
OF THE UNITED STATES 1870.  
BY  
FRANCIS A. WALKER.

SCALE

Under \$1 per Capita	I
\$1-4	II
\$4-7	III
\$7-12	IV
\$12-17	V
\$17 & over	VI

**Explanations.**  
 The Blue Lines indicate the boundaries of Groups of Population.  
 The Figures in Blue (2-18 18-45 45+) express the number of inhabitants to the Square Mile found within each group.  
 The Shaded Lines in Blue indicate the outside limit of a population of 2 or more to the Square Mile. The shading points towards the regions which have a population of less than 2 to the Square Mile.  
 Note: The occasional abrupt intervals between the shaded portions and the line of no population, are doubtless due in many cases to errors in the Census returns, incident to the sparseness of settlement.



# FISCAL CHART OF THE UNITED STATES

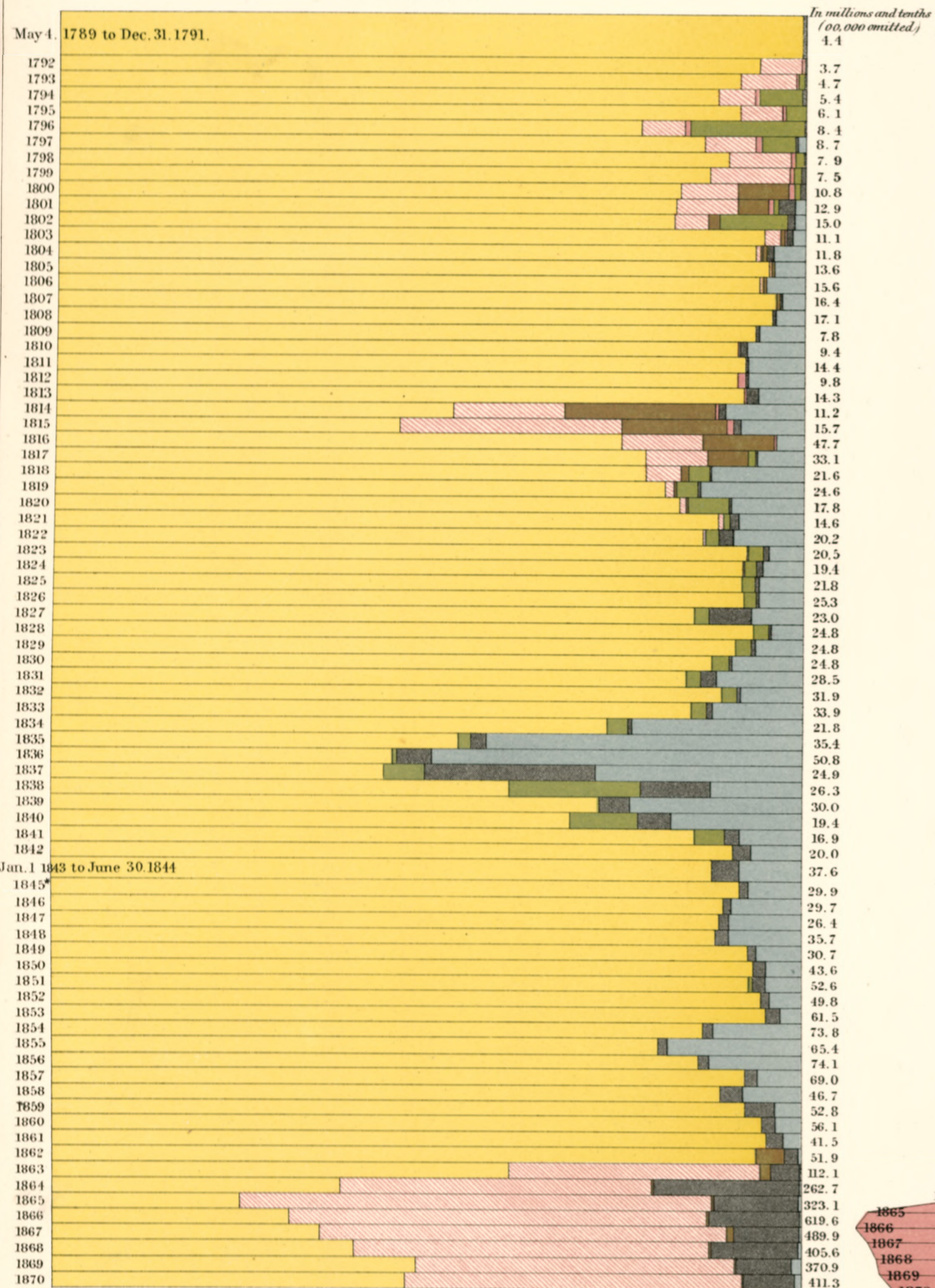
SHOWING THE COURSE OF THE PUBLIC DEBT BY YEARS 1789 TO 1870.  
TOGETHER WITH THE PROPORTION OF THE TOTAL  
RECEIPTS  
FROM EACH PRINCIPAL SOURCE OF REVENUE  
AND THE PROPORTION OF TOTAL  
EXPENDITURES  
FOR EACH PRINCIPAL DEPARTMENT OF THE  
PUBLIC SERVICE.

Compiled from the Report of the Secretary of the Treasury for the year 1872,  
BY  
FRANCIS A. WALKER.

- From Public Lands
- " Bank Stock
- " Internal Revenue
- " Customs
- " Direct Tax
- " Postage
- " Miscellaneous

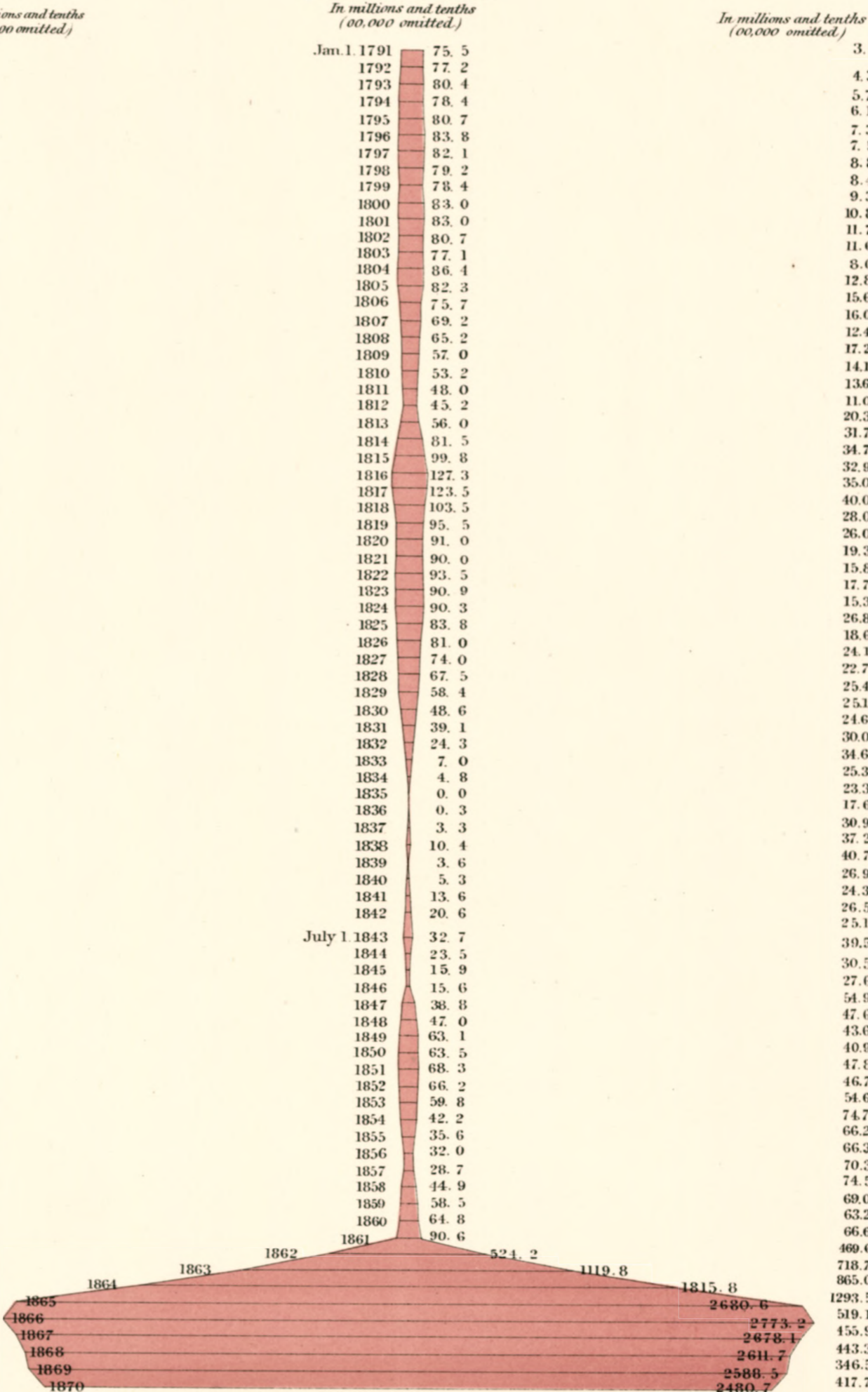
- Army
- Navy
- Pensions
- Civil
- Indians
- Foreign
- Miscellaneous
- Premium on Pub. Debt.
- Principal of Pub. Debt.
- Interest on Pub. Debt.

1-REVENUE.



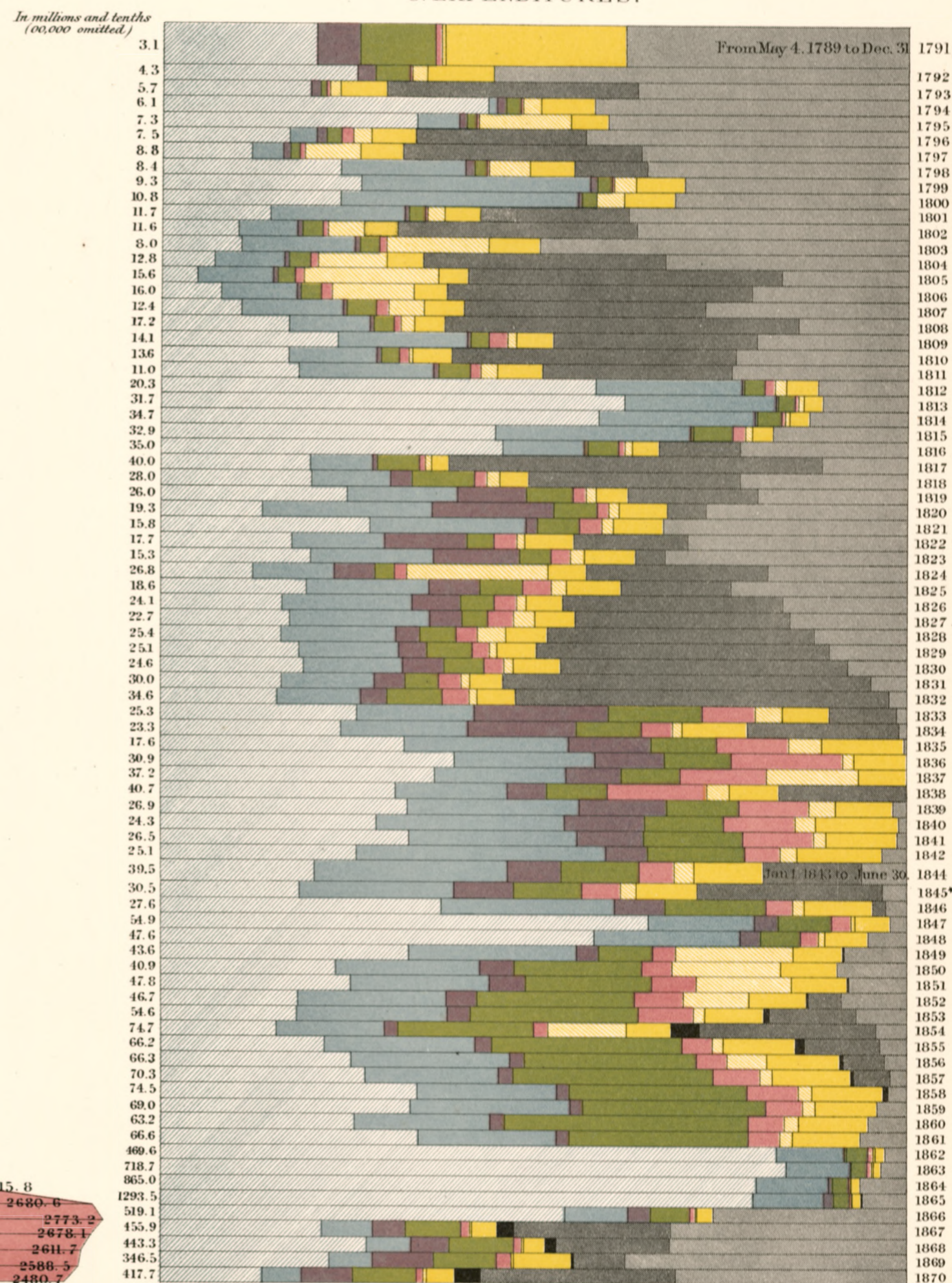
\*Fiscal Year ending June 30.

2-PUBLIC DEBT.



The Public Debt, January 1, 1835, was \$ 37,513.

3-EXPENDITURES.

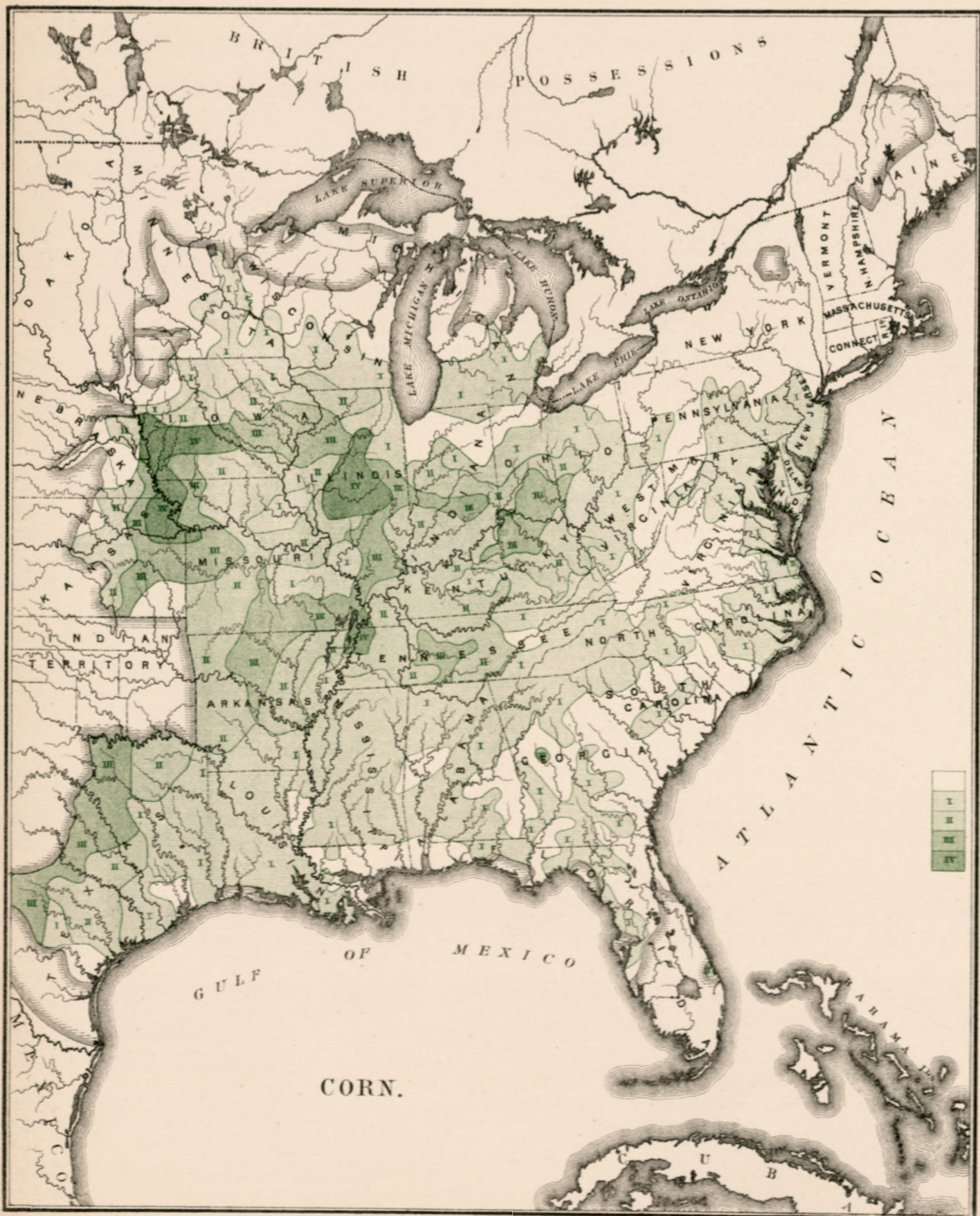
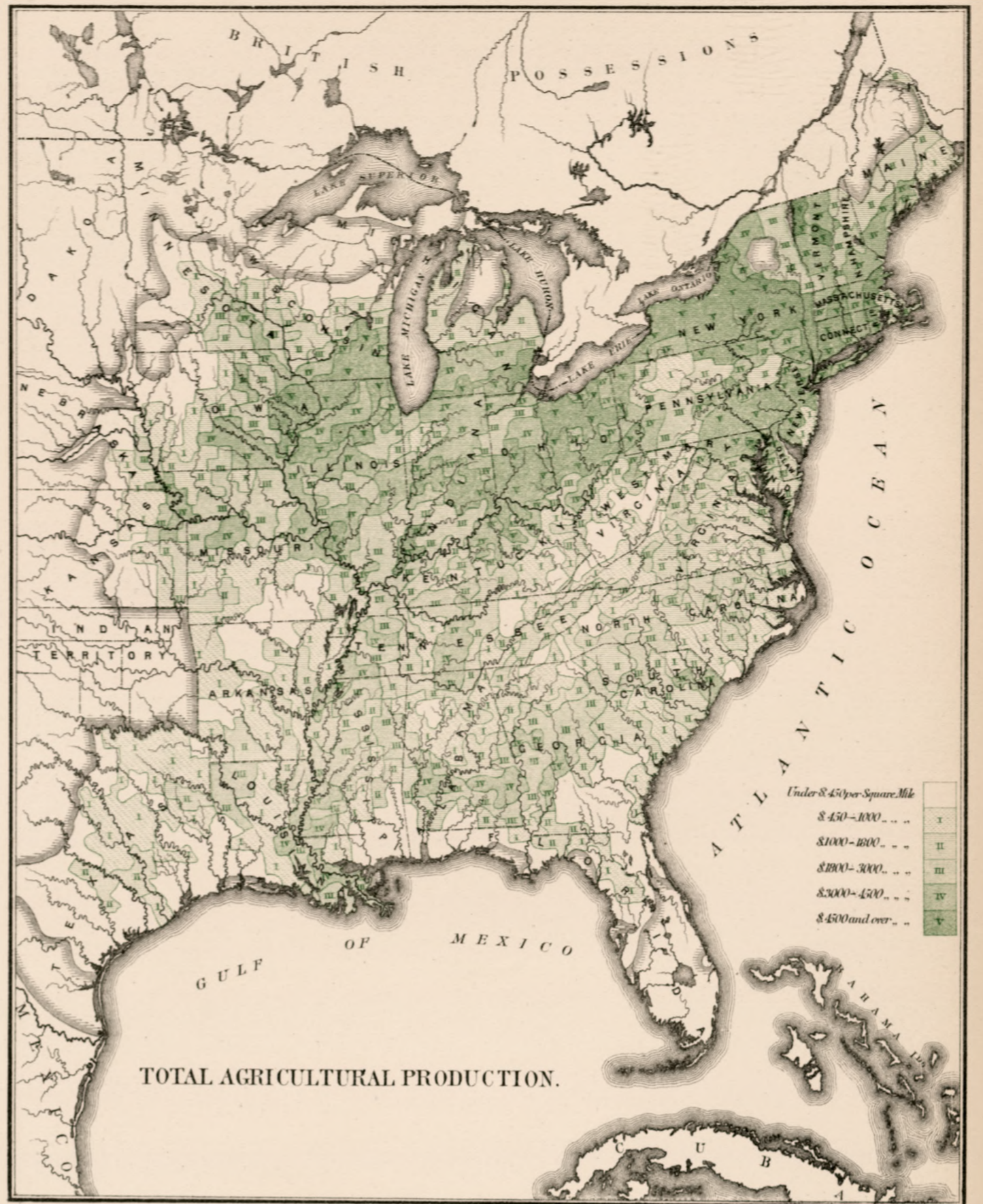
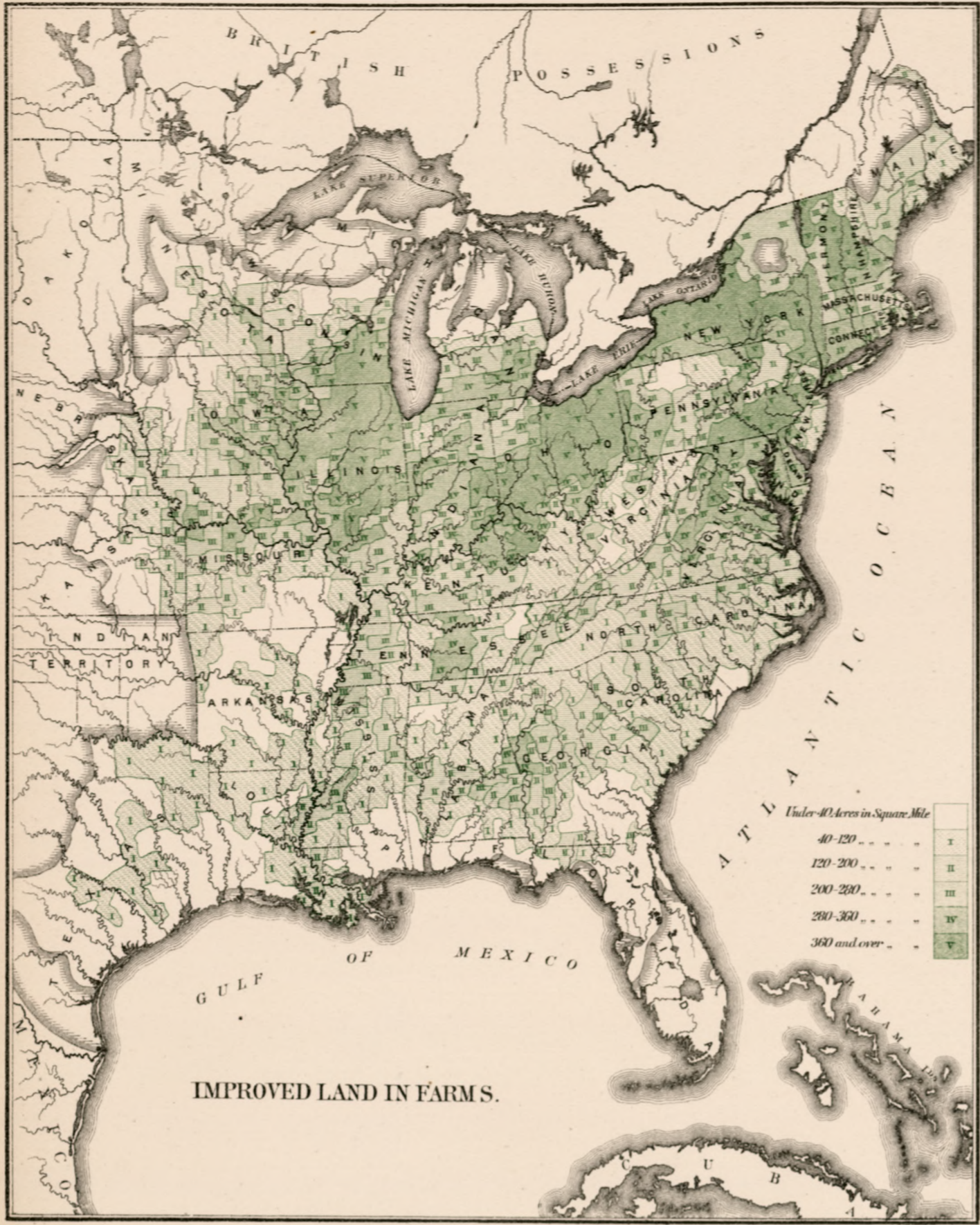


\*Fiscal Year ending June 30.









For Explanation of the Scale of the Corn Map, see PL. XXXVI.  
 Note: The Shaded Lines in Black indicate the outside limit of a population of 2 or more to the square mile. The shading points towards the regions which have a population of less than 2 to the square mile.



MAPS  
OF THE  
**PACIFIC COAST**  
EXHIBITING VARIOUS SUBJECTS  
Compiled from the Statistics of the Eighth and Ninth Census  
OF THE UNITED STATES  
by  
S. GALPIN.



Note: The Shaded Lines in Black indicate the outside limit of a population of 2 or more to the square mile.  
The shading points towards the regions which have a population of less than 2 to the square mile.