

MAP
SHOWING THE
ACQUISITION OF TERRITORY
AND
ITS DISTRIBUTION AMONG POLITICAL DIVISIONS,
1776-1874.
Compiled by
S. W. STOCKING.

Note: Letters refer to the description of parcels of territory to be found in the accompanying letterpress.



MAPS

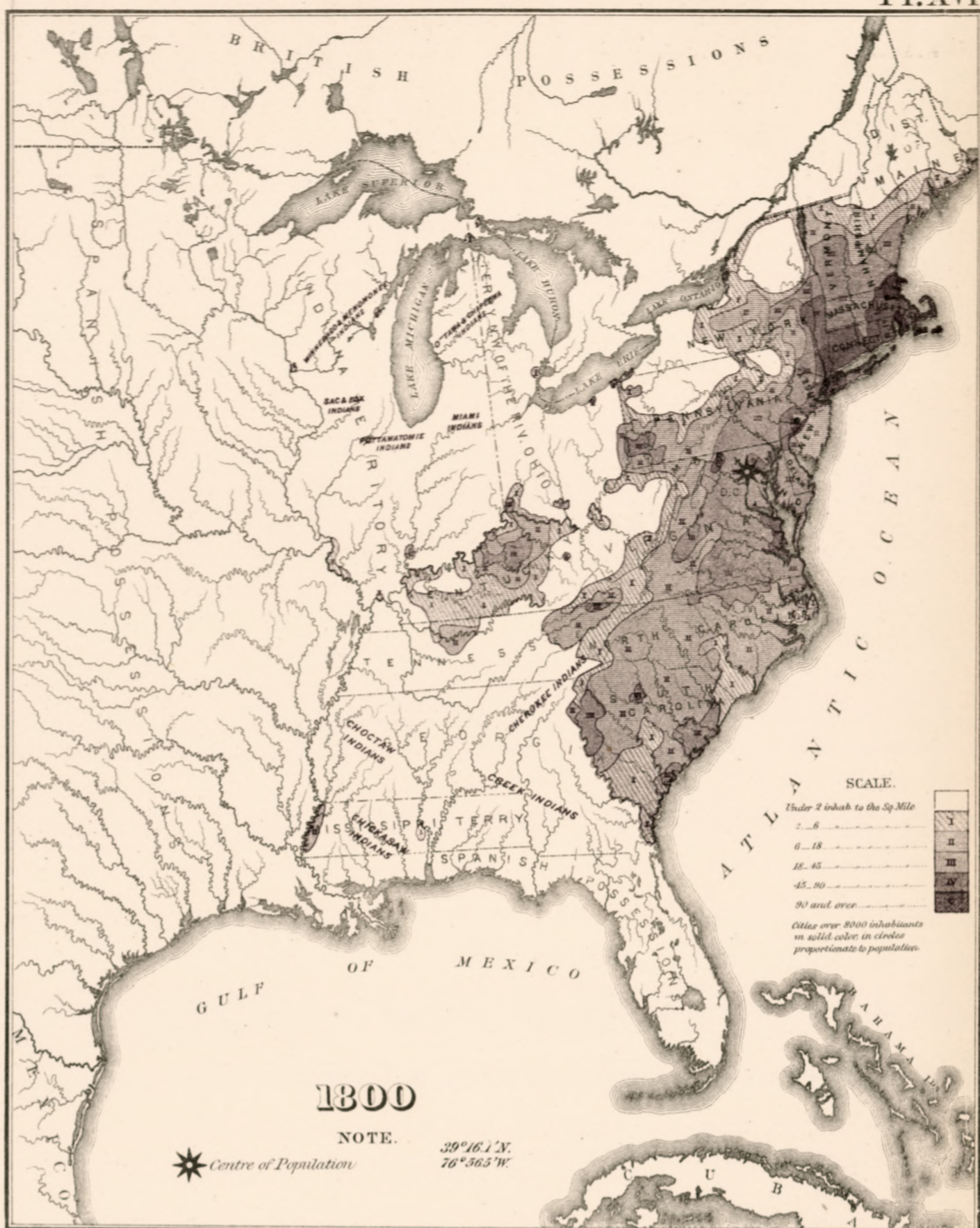
SHOWING, IN FIVE DEGREES OF DENSITY, THE DISTRIBUTION, WITHIN THE TERRITORY EAST OF THE 100TH MERIDIAN, OF THE

POPULATION OF THE UNITED STATES

(excluding Indians not Taxed.)

Compiled from the Returns of Population at the First, Second, Third and Fourth Census OF THE UNITED STATES, 1790-1800-1810-1820,

by FRANCIS A. WALKER.







MAP
 SHOWING IN FIVE DEGREES OF DENSITY, THE DISTRIBUTION,
 WITHIN THE TERRITORY, EAST OF THE 100th MERIDIAN,
 OF THE
POPULATION OF THE UNITED STATES
 (excluding Indians not taxed).
 Compiled from the Returns of Population at the Seventh Census
 BY
FRANCIS AWALKER.

NOTE.
 * Centre of Population 32° 50' N.
 81° 19' W.
 Determined by PROF. J.E. HILGARD, U.S. Coast Survey.

SCALE.

Under 2 inhab. to the Sq. Mile	I
2 - 6	II
6 - 18	III
18 - 45	IV
45 - 90	V
90 and over	VI

Cities over 8000 inhabitants in solid color, in circles proportionate to population.



SCALE.

Under 2 inhab. to the Sq. Mile

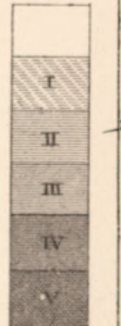
2 - 6

6 - 18

18 - 45

45 - 90

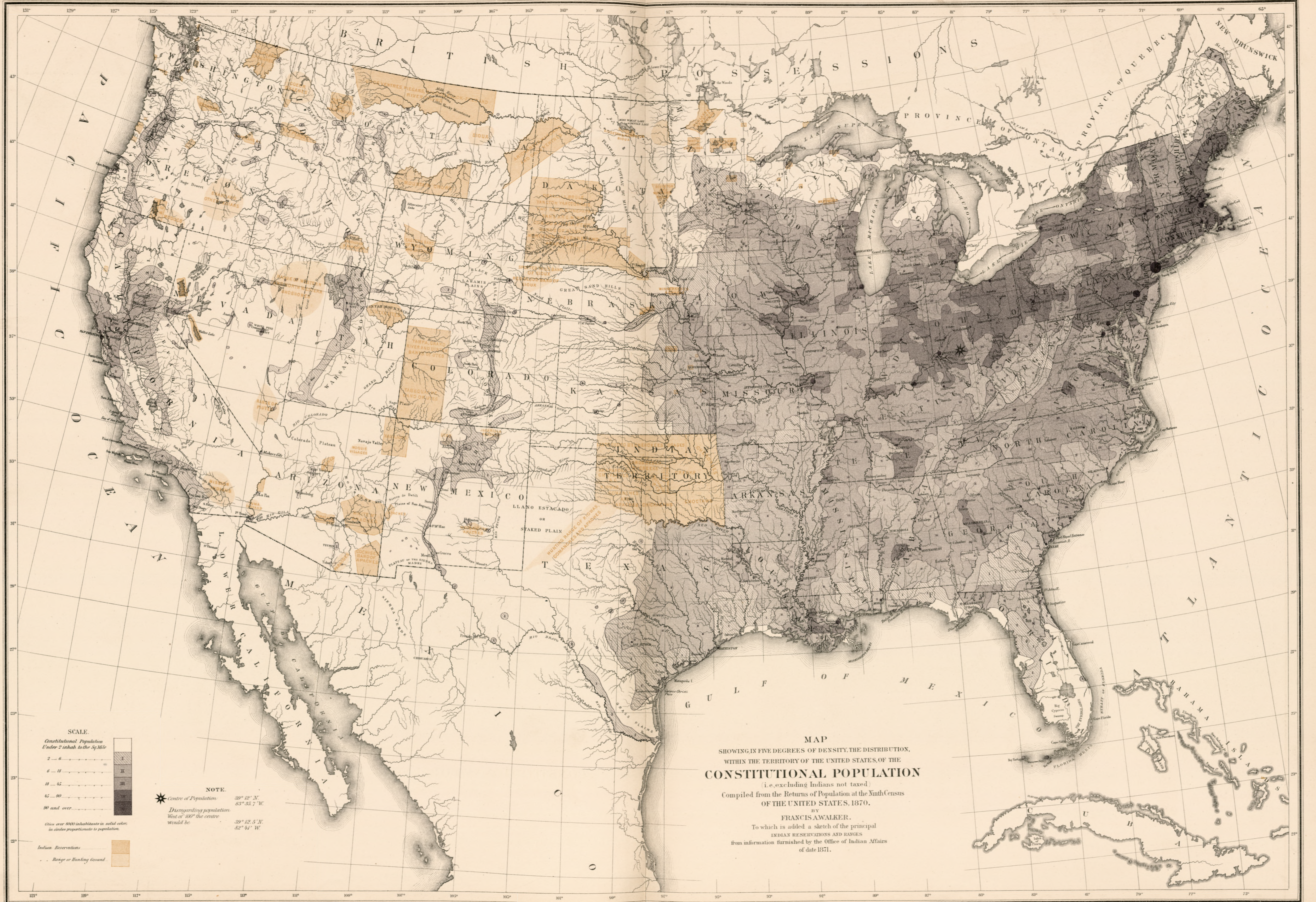
90 and over



Cities over 8000 inhabitants in solid color.
in circles proportionate to population.

MAP
 SHOWING IN FIVE DEGREES OF DENSITY, THE DISTRIBUTION,
 WITHIN THE TERRITORY, EAST OF THE 100th MERIDIAN,
 OF THE
POPULATION OF THE UNITED STATES
 (excluding Indians not taxed).
 Compiled from the Returns of Population at the Eighth Census
 BY
FRANCIS AWALKER.

NOTE.
 * Centre of Population 39° 00.4' N.
 82° 48.8' W.
 Disregarding population
 West of 100° the centre
 would be 39° 00.9' N.
 82° 62' W.



SCALE.
 Constitutional Population
 Under 2 inhab. to the Sq. Mile

2 - 6	I
6 - 12	II
12 - 42	III
42 - 90	IV
90 and over	V

Over 8000 inhabitants in solid color, in circles proportionate to population.

Indian Reservations
 Range or Hunting Ground

NOTE.
 * Centre of Population
 Disregarding population
 West of 100° the centre
 would be

39° 12' N.
 83° 35.7' W.

39° 12.5' N.
 82° 44' W.

MAP
 SHOWING IN FIVE DEGREES OF DENSITY, THE DISTRIBUTION,
 WITHIN THE TERRITORY OF THE UNITED STATES, OF THE
CONSTITUTIONAL POPULATION
 (i.e. excluding Indians not taxed)
 Compiled from the Returns of Population at the Ninth Census
 OF THE UNITED STATES, 1870.
 BY
 FRANCIS AWALKER.
 To which is added a sketch of the principal
 INDIAN RESERVATIONS AND RANGES
 from information furnished by the Office of Indian Affairs
 of date 1871.